



Journal of Epidemiology

Contents lists available at ScienceDirect

Journal of Epidemiology

journal homepage: <http://www.journals.elsevier.com/journal-of-epidemiology/>



Erratum

Erratum to “Validation of a novel claims-based stroke severity index in patients with intracerebral hemorrhage” [J Epidemiol 27 (1) (2017) 24–29]



Ling-Chien Hung ^{a,1}, Sheng-Feng Sung ^{a,1}, Cheng-Yang Hsieh ^{b,*}, Ya-Han Hu ^c, Huey-Juan Lin ^d, Yu-Wei Chen ^{e,f}, Yea-Huei Kao Yang ^g, Sue-Jane Lin ^h

^a Division of Neurology, Department of Internal Medicine, Ditmanson Medical Foundation Chiayi Christian Hospital, Chiayi City, Taiwan

^b Department of Neurology, Tainan Sin Lau Hospital, Tainan, Taiwan

^c Department of Information Management and Institute of Healthcare Information Management, National Chung Cheng University, Chiayi County, Taiwan

^d Department of Neurology, Chi Mei Medical Center, Tainan, Taiwan

^e Department of Neurology, Landseed Hospital, Tao-Yuan County, Taiwan

^f Department of Neurology, National Taiwan University Hospital, Taipei, Taiwan

^g Institute of Clinical Pharmacy and Pharmaceutical Sciences, College of Medicine, National Cheng Kung University, Tainan, Taiwan

^h Department of Pharmacy Systems, Outcomes & Policy, College of Pharmacy, University of Illinois at Chicago, Chicago, IL, USA

In our article recently published in the *Journal of Epidemiology*,¹ the legends of Fig. 1 (p. 26) and Fig. 2 (p. 27) happened to be reversed. They should be corrected as the following:

DOI of original article: <http://dx.doi.org/10.1016/j.je.2016.08.003>.

* Corresponding author. Department of Neurology, Tainan Sin Lau Hospital, 57, Sec. 1, Dongmen Road, East District, Tainan City 70142, Taiwan.
E-mail address: chengyanghsieh@gmail.com (C.-Y. Hsieh).

Peer review under responsibility of the Japan Epidemiological Association.

¹ Ling-Chien Hung and Sheng-Feng Sung contributed equally to this work.

<http://dx.doi.org/10.1016/j.je.2017.04.002>

0917-5040© 2017 The Authors. Publishing services by Elsevier B.V. on behalf of The Japan Epidemiological Association. This is an open access article under the CC BY license (<http://creativecommons.org/licenses/by/4.0/>).

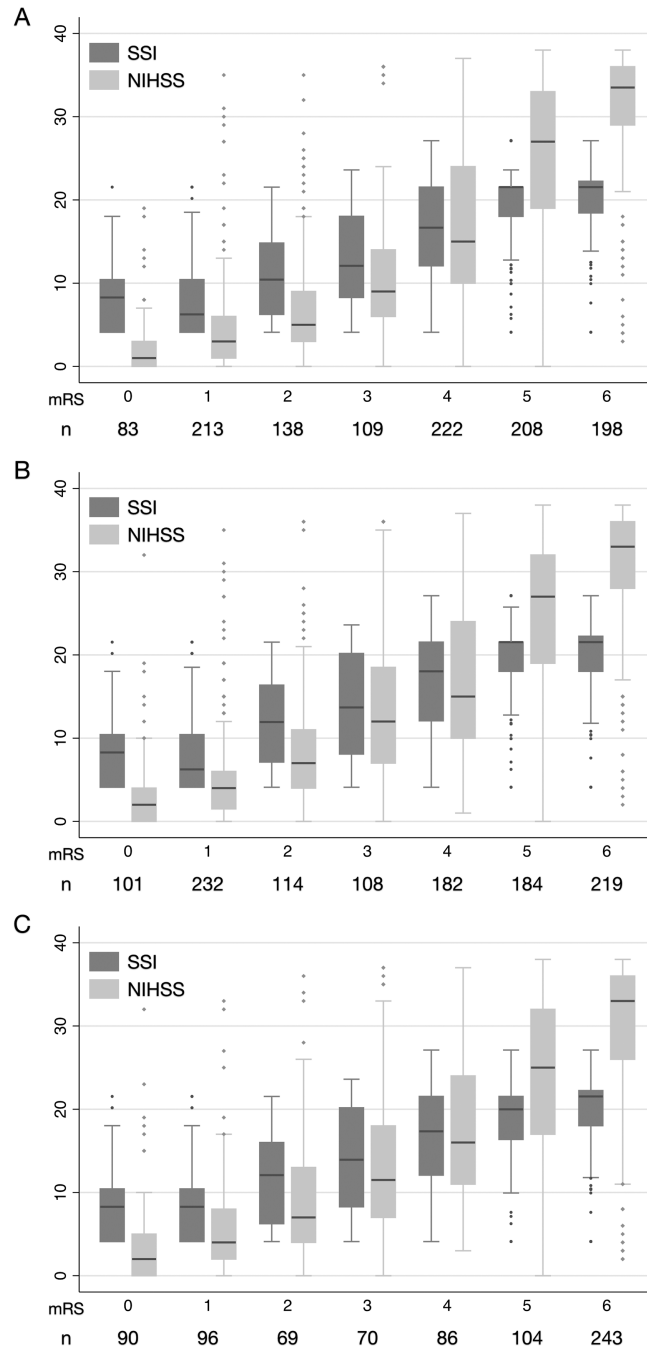


Fig. 1. Box-plots showing the distribution of the SSI and the NIHSS across all mRS grades at 3 months (A), 6 months (B), and 1 year (C) after intracerebral hemorrhage. mRS, modified Rankin Scale; NIHSS, National Institutes of Health Stroke Scale; SSI, stroke severity index.

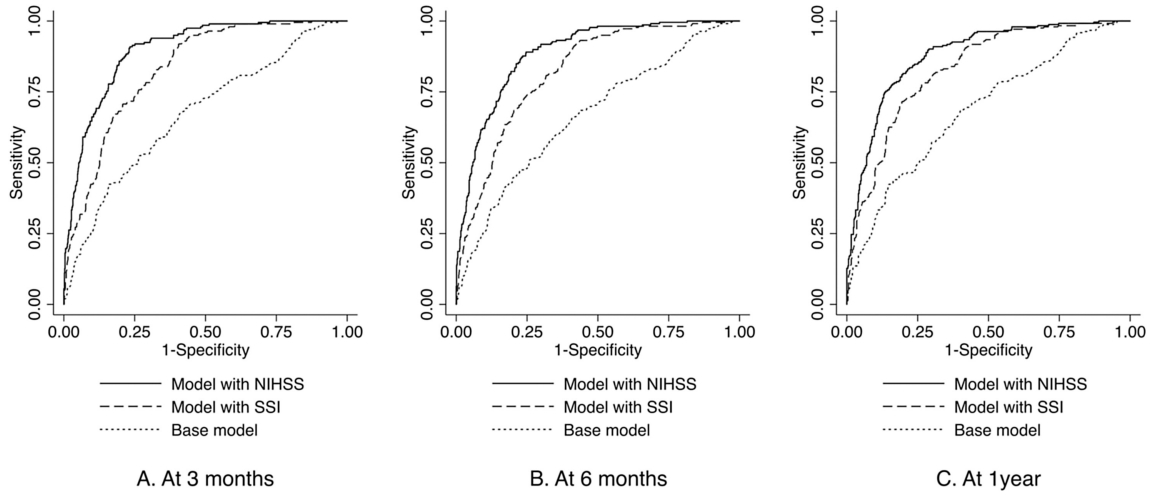


Fig. 2. Performance of mortality models for intracerebral hemorrhage. NIHSS, National Institutes of Health Stroke Scale; SSI, stroke severity index.

We sincerely apologize for not being able to identify those errors during the proof reading process.

Reference

1. Hung LC, Sung SF, Hsieh CY, et al. Validation of a novel claims-based stroke severity index in patients with intracerebral hemorrhage. *J Epidemiol.* 2017;27: 24–29.