

Protein and Glycan Mimicry in HIV Vaccine Design

Gemma E. Seabright^{1,2}, Katie J. Doores³, Dennis R. Burton⁴ and Max Crispin^{2,4}

1 - Oxford Glycobiology Institute, Department of Biochemistry, University of Oxford, Oxford, OX1 3QU, UK

2 - School of Biological Sciences, University of Southampton, Southampton, SO17 1BJ, UK

3 - Department of Infectious Diseases, King's College London, Guy's Hospital, London, SE1 9RT, UK

4 - Department of Immunology and Microbiology, the Scripps Centre for HIV/AIDS Vaccine Immunology and Immunogen Discovery (CHAVI-ID), International AIDS Vaccine Initiative Neutralizing Antibody Centre, Scripps Research, La Jolla, CA 92037, USA

Correspondence to Max Crispin: Building 85, Biological Sciences, University of Southampton, Southampton, SO17 1BJ, UK. max.crispin@soton.ac.uk

<https://doi.org/10.1016/j.jmb.2019.04.016>

Edited by M.F. Summers

Abstract

Antigenic mimicry is a fundamental tenet of structure-based vaccinology. Vaccine strategies for the human immunodeficiency virus type 1 (HIV-1) focus on the mimicry of its envelope spike (Env) due to its exposed location on the viral membrane and role in mediating infection. However, the virus has evolved to minimize the immunogenicity of conserved epitopes on the envelope spike. This principle is starkly illustrated by the presence of an extensive array of host-derived glycans, which act to shield the underlying protein from antibody recognition. Despite these hurdles, a subset of HIV-infected individuals eventually develop broadly neutralizing antibodies that recognize these virally presented glycans. Effective HIV-1 immunogens are therefore likely to involve some degree of mimicry of both the protein and glycan components of Env. As such, considerable efforts have been made to characterize the structure of the envelope spike and its glycan shield. This review summarizes the recent progress made in this field, with an emphasis on our growing understanding of the factors shaping the glycan shield of Env derived from both virus and soluble immunogens. We argue that recombinant mimics of the envelope spike are currently capable of capturing many features of the native viral glycan shield. Finally, we explore strategies through which the immunogenicity of Env glycans may be enhanced in the development of future immunogens.

© 2019 The Author(s). Published by Elsevier Ltd. This is an open access article under the CC BY license (<http://creativecommons.org/licenses/by/4.0/>).

Challenges Facing HIV-1 Vaccine Design

Vaccines typically contain or mimic parts or all of a pathogen, such as an attenuated strain or recombinant soluble surface protein, to prime the immune system to produce an effective response upon future exposure to that pathogen. This strategy has proved to be very successful in the past, famously resulting in the complete eradication of the smallpox virus [1], and more recently in a protective vaccine against Ebola virus [2]. Despite significant efforts, a vaccine capable of eliciting a protective response against the human immunodeficiency virus type 1 (HIV-1) has proved elusive [3].

Both antibodies and cytotoxic T lymphocytes are produced upon infection with HIV-1. However, the virus has evolved several features that undermine immunological control and eradication of infection, most notably, very high antigenic diversity and the establishment of a latent viral reservoir. While treatment with antiretroviral drugs can extend the life expectancy of infected individuals to near-normal [4,5], drug resistance has been documented for every class of antiretroviral currently in use [6], and treatment regimens are often accompanied by adverse effects and low levels of adherence. Furthermore, cessation of therapy results in rapid viral rebound [7]. If left untreated, HIV-1 infection results in diminished

numbers of CD4⁺ T cells (the major viral target cell), causing acquired immune deficiency syndrome (AIDS) and death. While HIV-1 cure strategies are an important and viable field of research [8], the development of an effective prophylactic vaccine remains a primary goal in the effort to control the HIV-1 pandemic.

Analysis of the immune response of infected individuals has renewed optimism that a vaccine may be a tractable goal [9,10]. A subset of HIV-1 infected patients are able to generate antibodies of sufficient breadth and potency to neutralize the vast majority of circulating HIV-1 isolates [11–13]. Although these broadly neutralizing antibodies (bnAbs) are unable to clear the virus from the infected individual, they are able to protect non-human primates [14–25] and humanized mice [26–32] from viral challenge when passively administered. Importantly, these antibodies are protective at concentrations achievable by vaccination in other settings [15,17]. Taken together, these observations provide some support for the hypothesis that a vaccine can be developed capable of generating a protective antibody response against HIV-1.

All known bnAbs are directed against the envelope spike (Env) [33–35], the only viral protein on the virus surface (Fig. 1a). Therefore, while the contribution of T cells in the development of an antibody response is critical [40–42], considerable research efforts have been directed at the development of stable, recombinant mimics of the envelope spike in order to elicit a B cell response [43]. Central to this strategy is the hypothesis that antigenic mimicry of a vaccine candidate is essential for the induction of an antibody response against that antigen [41,44]. However, HIV-1 has evolved under immense selection pressure by the humoral immune system, and consequently many of the most valuable bnAb epitopes are inherently poor immunogens. One manifestation of this is an extensive array of host-derived *N*-glycans which surrounds the envelope spike to create a largely immunologically “self” glycan shield (Fig. 1b). While originally thought to protect the underlying protein surface from immune recognition, the discovery that many bnAbs can develop that recognize glycan epitopes has exposed the glycan shield itself as a potential target for vaccine design [45]. Scanlan *et al.* [46] previously highlighted the apparent contradiction in that HIV-1 glycans have evolved as an adaptation for virus survival and yet have emerged as targets for vaccine design. It is therefore important that Env-based immunogens are able to mimic effectively both the protein and glycan components of the envelope spike, although strategies that tackle the poor immunogenicity of the glycan epitopes are likely to be required.

In order to inform the rational design of Env immunogens, a detailed understanding of both the composition of the glycan shield and the structural rules governing its formation are required. This review

will discuss recent contributions to the field of HIV-1 vaccine design, specifically the principles governing HIV-1 glycosylation and how this can be used to help select candidate immunogens. We also discuss the strategies being explored with the aim of boosting the immunogenicity of Env-based vaccines.

The antibody response

Neutralizing antibodies (nAbs) typically work by binding an antigen on the viral surface to prevent the virus from infecting the host cell, and correlate with protection in the majority of licensed vaccines [47]. As the only viral protein on the virion surface and playing a key role in mediating infection, the envelope spike is the sole target for nAbs. However, several fundamental features of HIV-1 biology hinder the development of nAbs in both a vaccine and infection setting. The functional envelope spike is a trimer of non-covalently associated gp120–gp41 heterodimers (Fig. 1), generated by furin cleavage of a gp160 precursor polypeptide. Host cell tropism and attachment is mediated by the gp120 subunits, which contain the CD4 receptor and co-receptor (CCR5 or CXCR4) binding sites. Once bound, substantial conformational changes enable the gp41 subunits to drive fusion of the viral and host cell membranes [48]. Antibodies capable of binding the spike in its functional conformation prevent this occurring. However, functional Envs are few and far between, with only approximately 14 spikes per viral particle (mean for one HIV-1 isolate) [36]. The wide spacing of the envelope spikes is disadvantageous for the host antibody response as B cells are more effectively activated by repetitive and organized structures [49].

The virus also produces an abundance of non-functional envelope spikes in the form of uncleaved gp160, and non-functional monomeric subunits such as soluble gp120 and gp41 stumps. These can arise through either the improper processing of the spike or its later disintegration (Fig. 1a). This “viral debris” displays immunodominant epitopes that are either occluded or absent on the functional trimer (e.g., the inner surface of gp120), and acts to divert the host antibody response [50–55]. Thus, the initial antibody response, arising over the first few weeks of infection, is incapable of binding the functional envelope spike and is “non-neutralizing” [56].

A further nAb evasion feature of HIV-1 is the relatively poor accessibility of its conserved epitopes. The CD4 binding site (CD4bs), for example, is a highly conserved region essential for infectivity and thus represents a potentially vulnerable site for antibody neutralization. However, its recessed location within the trimer interface, surrounded by *N*-glycans, reduces the accessibility of this valuable collection of epitopes for nAb recognition. Interestingly, llamas and cows are capable of generating nAbs

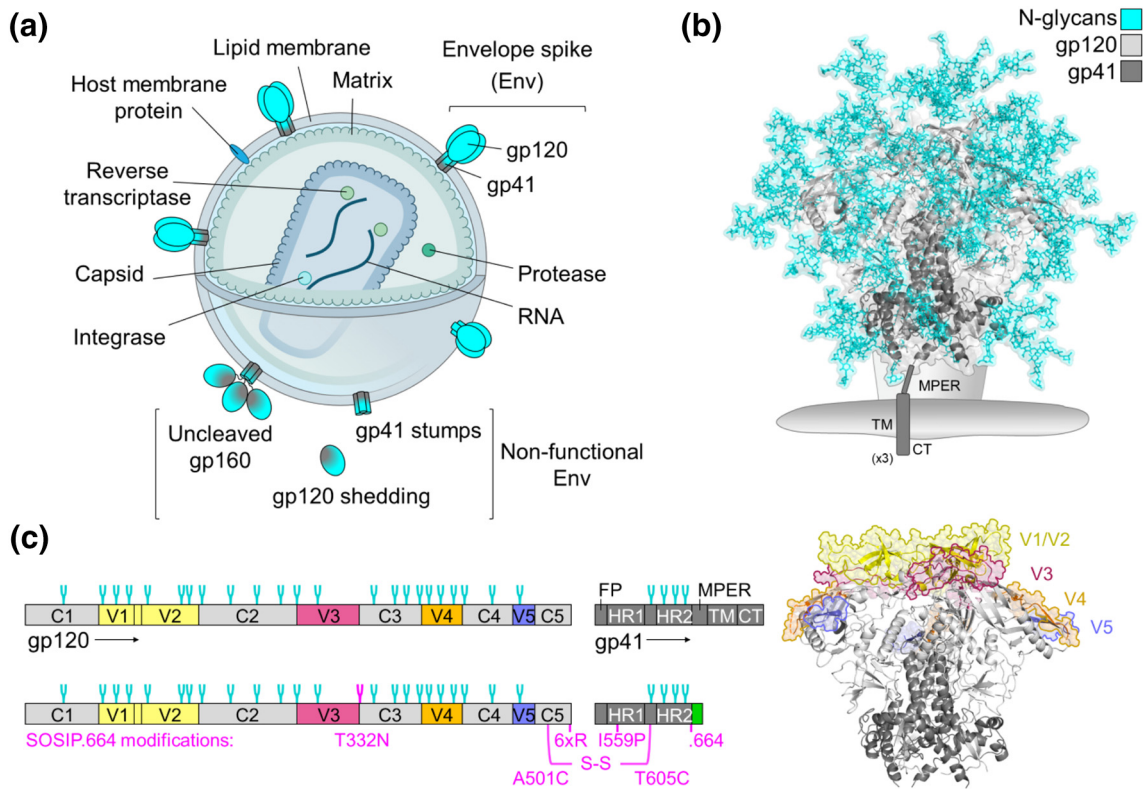


Fig. 1. Structure of the HIV-1 virion and the envelope spike. (a) Graphic depicting the structure of the HIV-1 virion. Approximately 14 envelope spikes are displayed on the surface of the virion (mean for one HIV-1 isolate), embedded into the host cell-derived lipid membrane [36]. (b) Model of a fully glycosylated envelope spike (glycans in cyan sticks) based on PDB: 5ACO [37]. Glycans were added according to Behrens *et al.* [38]. The envelope spike is a trimer of non-covalently associated gp120 (light gray) and gp41 (dark gray) heterodimers. The gp120 subunits contain the CD4 receptor and CCR5 or CXCR4 co-receptor binding sites. Upon binding, the trimer undergoes substantial conformational changes that enable the gp41 subunits to drive fusion of the viral and host cell membranes. The membrane proximal external region (MPER), transmembrane domain (TM) and cytoplasmic tail (CT) are not present on the structure and are shown for one protomer in cartoon along with the lipid membrane for orientation. (c) Left: Schematic representation of the primary structure of Env (top) and the soluble immunogen, BG505 SOSIP.664 (bottom). Variable regions (V1–5) are shown in colour, constant regions (C1–5) are shown in light gray, and gp41 is shown in dark gray. The envelope spike has approximately 25 potential *N*-glycosylation sites per gp120, and 4 per gp41 (cyan forks; mean across many isolates) [39]. SOSIP.664 modifications are annotated in magenta, with optional purification tag coloured green. FP, fusion peptide; HR1/2, heptad repeat 1 and 2. Right: Model of a de-glycosylated envelope spike (as in panel b), with variable loops coloured accordingly.

against the CD4bs region following immunization with Env [57,58]. Llamas naturally produce heavy-chain only antibodies that are much smaller than conventional antibodies, while cow antibodies contain very long third heavy-chain complementarity-determining regions (HCDR3), some over 70 amino acids in length. The unusual architectures of these antibodies enable them to easily access the CD4bs, supporting a model of steric blocking for conventional IgG molecules.

In contrast, highly variable regions occupy the more accessible regions of the trimer, providing yet another immunodominant diversion (Fig. 1c). Within a few months of infection, patients readily develop autologous nAbs (i.e., antibodies capable of neutralizing only the strain they were raised against), often directed at the variable loops 1, 2 and 3 (V1/V2 and V3) [59,60]. Antibody-mediated selection pressure,

combined with an error-prone viral reverse transcriptase, rapidly drives viral escape and results in extreme diversity [60]. Indeed, the genetic diversity of HIV-1 within an infected individual is comparable to the global genetic diversity of influenza in one year [39]. Thus, an effective vaccine against HIV-1 must induce not only nAbs, but also antibodies with sufficient breadth of activity to neutralize the majority of circulating strains (bnAbs).

The development of bnAbs is dependent on the activation of the appropriate naïve B cells by engaging their B cell receptor (BCR), that is, the precursor bnAb, prior to affinity maturation of the B cell in the germinal center by somatic hypermutation. The resulting bnAbs are often significantly mutated from their germline-encoded BCR [33]. However, this process is hindered by the low affinity of so-called “germline”-bnAbs (gl-

bnAbs) to the envelope spike. Consequently, many recombinant Env mimics also fail to bind gl-bnAbs [61–64], adding to the difficulties in eliciting bnAbs in a vaccine setting ([Mimicking bnAb development in natural infection](#) section).

The glycan shield

A contributing factor to the immunodominance of many of the non-neutralizing and autologous neutralizing epitopes, and the inability of Env to bind gl-bnAbs, is the presence of an array of *N*-glycans that mask much of the surface of the envelope spike (Fig. 1b). Each Env can have upwards of 90 potential *N*-glycosylation sites (PNGS), with glycans comprising approximately half the trimer's mass [65]. The extensive *N*-glycosylation presents additional challenges for the host antibody response to overcome. The glycans are derived from the host's own glycosylation machinery during Env synthesis and are therefore considered immunologically “self.” Auto-reactive B cells undergo strong negative selection during B cell development, constraining the development of potential anti-glycan antibodies [66]. Furthermore, glycoproteins tend to exist as heterogeneous populations, with a multitude of glycan structures decorating the same protein backbone, thereby potentially reducing the antigenicity of each individual glycoform [67]. Lastly, protein–glycan interactions tend to have low binding affinities and often require multivalent interactions to overcome this [68]. The heavily glycosylated outer domain of gp120 has been dubbed the “silent face” of HIV-1, due to the previous lack of antibodies described against this region [69].

The role of glycans in protecting HIV-1 from neutralizing antibody responses has been well documented. The glycan shield constantly evolves to escape the host immune system, with the addition and deletion of glycan sites frequently used by the virus to escape nAb responses [70–72]. The “evolving glycan shield” escape response is typified by the N332 glycan, which has been reported to shift from the N334 position and back again after the appearance of N332-dependent nAbs [70]. Furthermore, transmitted/founder (TF) viruses typically have fewer PNGS than chronic isolates [72–75]. While this suggests that there may be a fitness advantage to having fewer PNGS, a balance must then be struck between maintaining viral fitness and protecting vulnerable epitopes from the emerging nAb response. More recently, a study by Wagh *et al.* [76] reported that the addition of PNGS to fill holes in the glycan shield *in vivo* resulted in increased resistance to autologous nAbs. Indeed, many *in vitro* studies have also reported the increased susceptibility of the virus to neutralization upon removal of PNGS [77–81], which can often be rationalized by clashes observed between nAbs and glycans in structural studies [82,83].

Despite the above-mentioned challenges, approximately a third of infected individuals develop some level of bnAbs after a few years of infection [11–13]. Many bnAbs are able to either penetrate the glycan shield to bind protein surfaces or directly bind to Env glycans. Thus, while glycan shielding remains a potent immune evasion strategy, the discovery of numerous glycan-binding bn has highlighted the glycan shield as part of an attractive target for vaccine design [84]. The importance of the glycan shield in HIV-1 vaccine design has recently been underlined by Wagh *et al.* [76], who observed that the development of bnAbs in infected individuals correlated with the completeness of the glycan shield at transmission.

Instability of the viral spike

Although bnAbs are increasingly being isolated from infected individuals, we are yet to elicit them in a vaccine setting in humans. Early vaccination strategies using recombinant, monomeric gp120 failed to confer protection [85–87], presumably due to the elicitation of antibodies directed against the aforementioned immunodominant non-neutralizing epitopes (and/or the absence of gp41 and quaternary epitopes) [88]. The focus of HIV-1 vaccine research has now shifted to include the production of trimeric Env immunogens that display the majority of bnAb epitopes while minimizing non-neutralizing epitopes as much as possible, with the hope that these will be better able to induce a bnAb response [43]. However, the envelope spike is inherently unstable, reflecting its need to undergo substantial conformational changes during viral and host cell fusion. This has made the design of native-like immunogens particularly challenging (for an extensive review on the history and design of native-like Env trimers, see Sanders and Moore [43]).

The desire to remove the transmembrane region of the protein in order to generate soluble mimics often amplified trimer instability. Initial efforts to stabilize the trimer involved the removal or inactivation of the furin cleavage site to prevent gp120–gp41 dissociation, and/or the introduction of a trimerization domain at the C-terminus to prevent separation of the three gp120–gp41 heterodimers [89,90]. Although these approaches usually generated trimers, there was often an abundance of monomers, dimers, and higher-molecular weight aggregates, owing to the inappropriate formation of intermolecular disulfide bonds [91,92]. These trimer constructs often displayed aberrantly folded gp120s due to intramolecular disulfide bond scrambling and non-native like quaternary structures as judged by peptide mapping, negative-stain electron microscopy (EM), hydrogen–deuterium exchange mass spectrometry and glycosylation analysis ([Protein structure and the trimer-associated mannose patch](#) section). Perhaps

most importantly, these trimers display non-native-like antigenicity [91–95] and are commonly referred to as “pseudotrimers” to reflect their various non-native properties [43]. With hindsight, it was therefore unsurprising that immunization studies with pseudotrimers, not unlike monomeric gp120, failed to elicit nAbs with sufficient breadth or potency [96–98].

Protein Mimicry in Vaccine Design

The development of the SOSIP.664 platform transformed the field of native-like HIV-1 trimer design (Fig. 1c) [43]. These constructs retained the furin cleavage site, optimized for efficient cleavage and relied on the introduction of a disulfide bond (“SOS”) to covalently link the gp120 and gp41 subunits [99]. An additional point mutation in the gp41 subunits (I559P, “IP”) strengthened interactions between the three heterodimers by trapping the trimer in its pre-fusion conformation [100,101], while truncation before the transmembrane region (“.664”) ensured the solubility of the trimers and reduced aggregate formation [102]. A further point mutation (T332N) introduced a glycan site that contributes to the epitope of many bnAbs. This format was first successfully applied to a clade A strain, BG505 [54], with the resulting “BG505 SOSIP.664” trimers exhibiting both native-like structure [103] and antigenicity [54].

In recent years, an arsenal of native-like trimers has been produced. The “SOSIP” format has since been applied to multiple strains, and mosaic and consensus sequences, although these often required further stabilizing point mutations and disulfide bonds (either between gp120–gp41 and/or between protomers) [104–112]. Other native-like trimer formats focused on eliminating the requirement for furin cleavage (and therefore the need to co-express Env immunogens with furin encoding plasmids) in an attempt to simplify protein production strategies and DNA-based vaccines. Native flexibly linked (NFL) and single-chain (SC) trimers achieved this feat by replacing the furin cleavage site with a flexible Gly–Ser linker [113,114]. While the NFL and SC constructs both relied on the I559P point mutation to maintain the pre-fusion conformation, UFO (uncleaved prefusion-optimized) constructs achieved this through a computational redesign of the HR1 (heptad repeat 1) region [115]. The immunogenicity of many of the above-mentioned native-like trimers has now been investigated in animal models [104,107,116–121] and has been reviewed by Sanders and Moore [43].

Display of bnAb Epitopes by Viral Spike Mimetics

Native-like trimers are often assessed by their ability to bind bnAbs and not non-neutralizing

antibodies. The development of native-like soluble trimers enabled the characterization of many bnAb epitopes through various biophysical techniques, such as x-ray crystallography and EM [122]. Broadly neutralizing antibodies are generally categorized by their recognition of five distinct and largely conserved epitopes on the envelope spike: the CD4 binding site (CD4bs), the membrane proximal external region (MPER), and the *N*-glycans located at the gp120–gp41 interface, the outer domain of gp120, and on the V1/V2 loops at the trimer apex. However, recent advances in high-throughput B cell screening have led to a dramatic increase in the identification of new bnAbs and have subsequently revealed a continuum of epitopes spanning the entire surface of the trimer [34], including the majority of *N*-glycans (Fig. 2). The recent characterization of bnAb VRC-PG05, which recognizes glycans at positions N262, N295 and N448, could conceivably be the last class of bnAb to be identified as its discovery filled one of the few remaining gaps on the trimer surface [123].

The extent to which individual bnAbs depend on glycans for binding and neutralization varies. At one extreme, 2G12 recognizes an epitope composed exclusively of *N*-glycans [124–130]. On the other hand, bnAbs against the CD4bs, for example, have evolved to either avoid or accommodate glycans that would otherwise occlude the underlying protein epitope [131]. Most bnAb epitopes occupy a midway point, with binding dependent on both protein and glycan components.

The abundance of glycan-targeting bnAbs has earmarked *N*-glycans as important components of a future HIV-1 vaccine. Thus, there is a need for a detailed definition of the precise composition of the glycan shield on both viral Env and candidate immunogens. In addition, an understanding of the principles controlling glycosylation will help guide the design of immunogens that are able to effectively mimic viral Env glycosylation, and, hopefully, elicit a broadly neutralizing anti-glycan response.

Structure and development of broadly neutralizing antibodies

The development of bnAbs requires repeated rounds of viral escape and antibody maturation and can therefore take several years of infection to arise [70,132,133]. Their slow development may reflect the fact that bnAbs often depend on unusual antibody features in order to overcome the aforementioned challenges associated with the development of glycan recognition and neutralization breadth.

The glycan-targeting antibody, 2G12, overcomes low-affinity protein-glycan interactions by exhibiting a unique domain-exchanged structure. Here, two heavy-chain variable regions are exchanged to

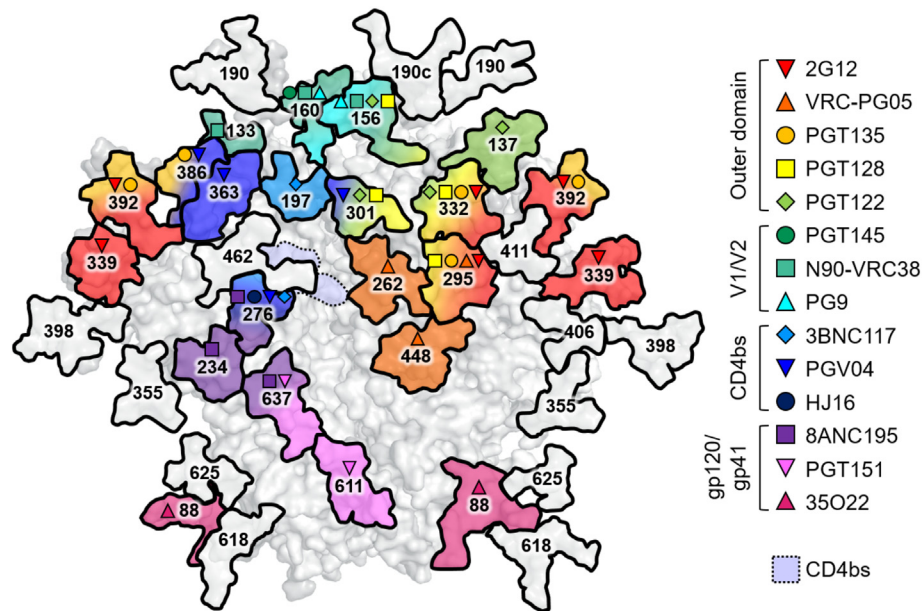


Fig. 2. Broadly neutralizing antibodies recognize protein-glycan epitopes. Model of a fully glycosylated BG505 SOSIP.664 trimer depicting the *N*-glycans that have been implicated in binding a variety of bnAbs (inset key). Glycans not present on the BG505 strain have been omitted; for example, 35O22 also recognizes *N*-glycans at positions 230 and 241. Model based on PDB: 5ACO as in Fig. 1, numbering according to the HXB2 reference sequence. CD4bs, CD4 binding site.

create a single Fab₂ [127]. The resulting structure has an additional antigen binding site at the interface of the two arms, which allows for the binding of four Env glycans with high avidity [126,127].

Many bnAbs, particularly those targeting the V1/V2 and outer domain glycans, contain very long HCDR3 sequences [134–139]. While the average length of human HCDR3 is 13 residues long [140], bnAb HCDR3s can contain upwards of 30 residues. This is particularly true of bnAbs targeting the glycans of the outer domain and V1/V2 loops, where long HCDR3 sequences allow the antibody to penetrate the glycan shield and make contact with the underlying protein surface. The HCDR3 of PGT145, for example, contains 33 residues, and penetrates the N160 glycan triad at the apex of the trimer to contact underlying protein residues from all three protomers [134]. For outer domain-targeting bnAbs (e.g., PGT128 and PGT135), long HCDR3s allow penetration of the glycan shield to access the base of the V3 loop [136,137]. In both examples, at least one glycan makes extensive interactions with the bnAb binding site. A similar phenomenon has been observed for bnAbs targeting the MPER, namely, 4E10, where a long (20 residue), hydrophobic HCDR3 allows for contact with the lipid membrane as well as gp41 protein surface [139]. Often long HCDR3s are accompanied by post-translational modifications, such as tyrosine sulfation, which have also been reported to contribute to binding and neutralization [135].

Another feature present in many bnAbs is extensive somatic hypermutation [33]. Classically, antibodies accumulate such mutations in the antigen-contacting complementarity-determining regions (CDRs). However, bnAbs often require somatic mutations to the more conserved framework regions [141]. Although there is evidence that higher levels of somatic hypermutation correlate with increased breadth and potency in some bnAb lineages [142], this may be a consequence of the length of time of development rather than a necessity of bnAb activity. For instance, partially germline reverted forms of VRC01 and 10E8 bnAbs are still broad and potent neutralizers [143].

Poly- and auto-reactivity are also frequently associated with bnAbs [144–146]. These observations are somewhat unusual as both characteristics are negatively selected for during B cell development [66]. It has been hypothesized that conserved HIV-1 epitopes may mimic host proteins in order to avoid host antibody responses through the down-regulation of relevant B cells by host tolerance mechanisms [144,145,147]. A similar host immune evasion strategy has been reported for the pathogen *Campylobacter jejuni*, whose lipooligosaccharide (LOS) mimics the gangliosides of the host's peripheral nervous system [148]. Despite these barriers, poly- and auto-reactive bnAbs are not uncommon, although their development may be dependent on prolonged exposure to the antigen, as several B cell tolerance checkpoints may need to be overcome.

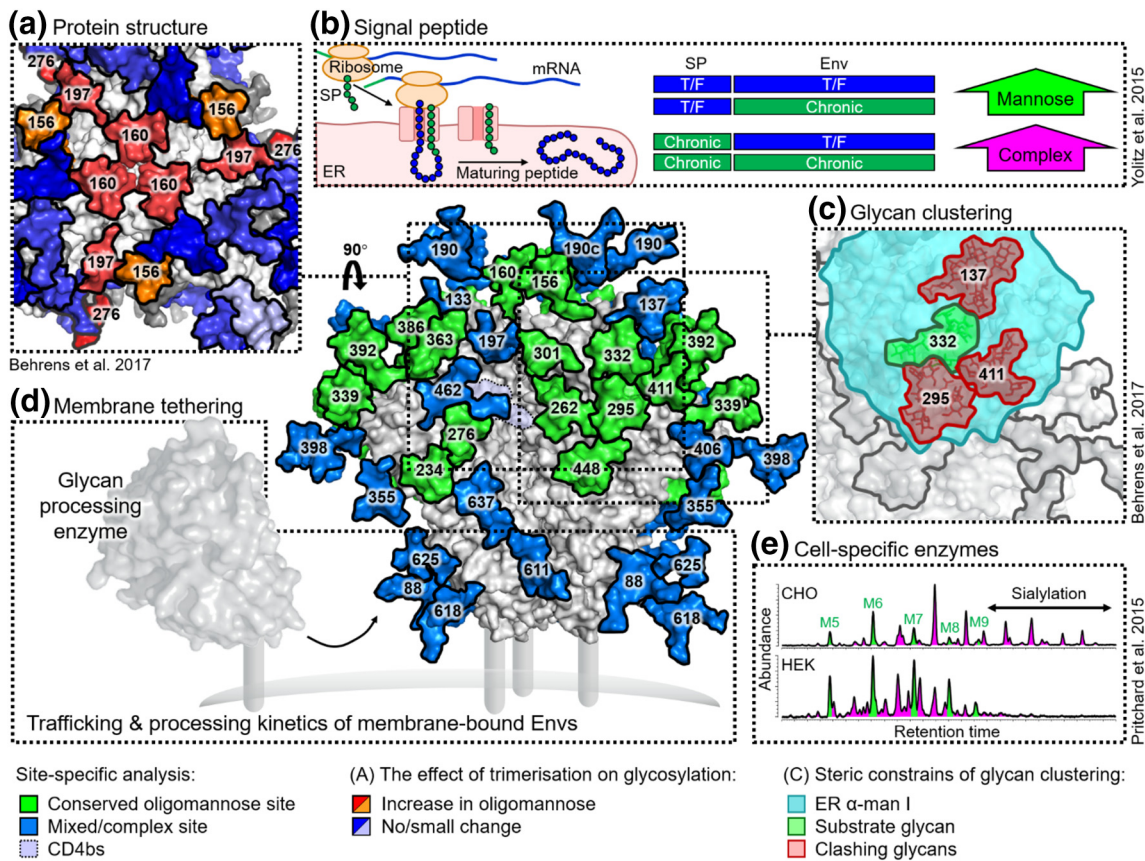


Fig. 3. Principles controlling Env glycosylation. Site-specific glycan analysis of recombinant BG505 SOSIP.664 [38,163,168,172] and virally derived BG505 Env [173,174] has revealed clusters of glycans displaying under-processed, oligomannose-type glycans (green). These are largely located on the outer domain of gp120 (forming the intrinsic mannose patch) and at the trimer apex and protomer interfaces (forming the trimer-associated mannose patch). Model according to Fig. 1. (a) The quaternary protein structure of native-like trimers imposes steric constraints on the host's glycosylation enzymes, resulting in an increase in the amount of oligomannose-type glycans at sites near the protomer interfaces (red/orange), compared to that of monomeric or non-native trimeric Env [168]. (b) Irrespective of the mature Env peptide sequence, the presence of a signal peptide (SP) from a transmitted/founder (TF) viral isolate results in an increase in oligomannose-type glycosylation, while a chronic-stage signal peptide results in increased complex-type glycosylation. The signal peptide influences Env trafficking, folding and retention through the ER [175]. (c) Modeling the ER α -mannosidase I (cyan, PDB: 5KIJ) on to its substrate glycan (green) reveals extensive clashes with neighboring glycans (red) sufficient to explain the formation of the intrinsic mannose patch [171]. (d) It is hypothesized that membrane-bound Env constructs display elevated glycosylation processing as they exhibit a different topology relative to the membrane-bound enzymes compared to soluble constructs, which are released into the lumen of the ER [173,174]. Schematic of a membrane-bound glycan processing enzyme, based on the structure of a sialyltransferase (PDB: 6APL). (e) While the processing of many Env glycans is limited by protein-directed steric constraints, the fate of others is dependent on the glycosylation enzymes possessed by the host cell. The gp41 from BG505 SOSIP.664 expressed in Chinese hamster ovary (CHO) cells displays increased sialylation compared to the same protein expressed in human embryonic kidney (HEK) cells [94].

The elicitation of bnAbs through typical vaccination strategies may therefore prove challenging.

Glycan Mimicry in Vaccine Design

The observation that glycan-dependent bnAbs can bind to soluble mimetics of the viral spike indicates that the glycans displayed by such immunogens are largely tolerated within the bnAb glycan specificity

profile. However, given the nature of bnAbs, which have evolved to tolerate microheterogeneity of glycans, cross-reactivity does not necessarily indicate that the target glycans are precisely conserved between immunogen and virus. For example, some glycan-specific bnAbs recognize the largely invariant base of the glycan [134,149]. Furthermore, failure of an immunogen to bind a bnAb could be symptomatic of either a failure of protein mimicry, glycan mimicry, or both. For these reasons, there is significant

interest in defining the glycosylation of both target viruses and candidate immunogens. Finally, detailed information about glycosylation will also help define the immunological ramifications of particular immunogen and viral glycoforms that may go beyond simply the display of particular glycan structures at a particular site. For example, are some glycoforms more inflammatory or immunogenic than others [150]?

Understanding Env glycosylation processing

The analysis of HIV-1 glycosylation is particularly challenging given the extensive heterogeneity displayed by glycoproteins, combined with the large number of PNGS on Env. Furthermore, isolating virally derived Env in sufficient quantities for glycan analysis has proved difficult. Early glycan analyses were therefore generally performed on recombinant, monomeric gp120 [151–157], or trimeric Env constructs derived from pseudovirions [151,158–160], membrane-associated trimers [161,162], and recombinant, soluble trimers [38,94,121,162–170]. These analyses soon revealed key aspects of Env glycosylation processing. Firstly, the Env glycan shield is heterogeneous. The gp120 subunit alone can contain upward of 50 different glycan structures [38], attributed to the large number of glycan processing enzymes possessed by mammalian cells. Despite this heterogeneity, there always exists a substantial population of under-processed, oligomannose-type glycans ($\text{Man}_{5-9}\text{GlcNAc}_2$). This glycan signature arises through steric constraints within the Env glycan shield that impede the actions of some of the host glycosylation enzymes (Glycan clustering and the intrinsic mannose patch section and [Protein structure and the trimer-associated mannose patch section](#)) [156,158,159,171].

Many of the above glycan analyses focused on the analysis of enzymatically released *N*-glycans. While this provides a useful readout of the overall glycosylation profile, no site-specific information can be gleaned. Such information, which involves the analysis of protease-digested glycopeptides, is valuable in order to elucidate the precise composition of bnAb epitopes. The development of the SOSIP.664 platform, combined with an advancement of mass spectrometric and chromatographic technologies enabled more in-depth, site-specific glycan analyses.

We have previously published a quantitative, site-specific glycan analysis of the recombinant BG505 SOSIP.664 trimers [38]. This revealed that the oligomannose signature observed on Env was largely accounted for by several PNGS containing solely under-processed, oligomannose-type glycans, usually dominated by $\text{Man}_9\text{GlcNAc}_2$. The remaining sites contained either processed, complex-type glycans, or a mixed population.

Mapping this information onto the structure of BG505 SOSIP.664 illustrated how large regions of oligomannose-type glycans span across the outer domain of gp120, while complex-type glycans occupied sites at the periphery of the trimer, particularly on the gp41 subunits (Fig. 3).

The Paulson laboratory employed a complementary site-specific workflow to analyze BG505 SOSIP.664 trimers [163]. By sequential digestion of glycopeptides with Endoglycosidase H (to cleave oligomannose-/hybrid-type glycans, leaving a GlcNAc residue) and Peptide-*N*-Glycosidase F in the presence of ^{18}O -water (to cleave the remaining complex-type glycans and convert the Asn to an ^{18}O -labeled Asp), they were able to generate novel mass signatures for each category of glycan: +203 Da for oligomannose-/hybrid-type, +3 Da for complex-type glycans, and +0 for unoccupied peptides. Their data were in very close agreement to our earlier analysis. This classification method is very powerful for low abundance samples (as heterogeneous glycopeptides become grouped as a single peptide), although information on the exact composition of glycan sites is not captured.

In some instances, the detail obtained from intact glycopeptide analysis may explain <100% neutralization plateaus observed by some bnAbs [176,177]. For instance, PGT135 is only able to neutralize around 85% of BaL pseudoviruses [176]. This bnAb recognizes predominantly glycans at N332, N386, and N392 (Fig. 2) [137]. Site-specific analysis of the N392 PNGS on recombinant gp120_{BaL} (subscript denotes strain) revealed the majority of glycans at this site to be $\text{Man}_8\text{GlcNAc}_2$ structures, with a secondary population of $\text{Man}_9\text{GlcNAc}_2$ [176]. In line with this, a crystal structure of the PGT135 Fab bound to a gp120_{JR-FL} core shows the N392 site to be occupied by a $\text{Man}_8\text{GlcNAc}_2$ structure [137]. Modeling an additional mannose residue to this glycan (to give $\text{Man}_9\text{GlcNAc}_2$) revealed steric clashes with the bnAb [137]. Furthermore, it has been shown that PGT135 is unable to neutralize pseudovirus displaying predominantly $\text{Man}_9\text{GlcNAc}_2$ structures [137]. Thus, $\text{Man}_9\text{GlcNAc}_2$ at the N392 site seems unoptimal for PGT135 binding, and the site-specific presence of this structure may account for the observed neutralization plateaus.

Immunogen mimicry of viral glycosylation

Recent progress in the production and purification of HIV-1 virions has enabled the glycosylation analysis of virally derived Env. The Dell laboratory presented a qualitative analysis of gp120_{BaL} glycosylation derived from virions produced in a human lymphoid cell line [178]. In line with analysis of SOSIP.664 trimers, 15 of the 24 PNGS contained solely oligomannose-type structures, although the relative abundances of each glycoform were not

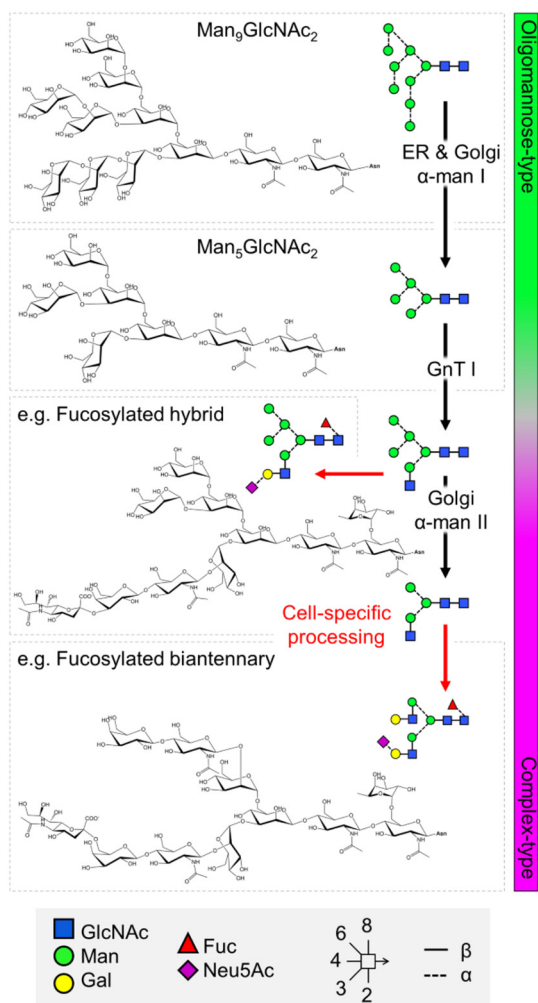


Fig. 4. Overview of the mammalian *N*-glycosylation pathway. The envelope spike is extensively glycosylated by the host cell, which typically follows a highly ordered pathway. As the protein is translated, a Glc₃Man₉GlcNAc₂ (Glc, glucose, Man, mannose, GlcNAc, *N*-acetylglucosamine) precursor is transferred en bloc to Asn residues within the *N*-glycan consensus sequence Asn-X-Thr/Ser (where X is any amino acid except Pro). As the protein is folded the three terminal glucose residues are removed to give rise to a glycoprotein displaying homogenous Man₉GlcNAc₂ structures. This is then further trimmed by endoplasmic reticulum (ER)- and Golgi apparatus-resident α-mannosidases to give rise to Man₅GlcNAc₂. Steric constraints within Env limit the actions of these early enzymes resulting in a population of under-processed oligomannose-type glycans. The addition of a β1-2-linked GlcNAc residue to Man₅GlcNAc₂ structures initiates cell-specific diversification to a variety of hybrid- and complex-type structures, through additional processing and/or trimming. α-man I and II, α-mannosidase I and II; GnT I, *N*-acetylglucosaminyltransferase I; Gal, galactose; Fuc, fucose; Neu5Ac, *N*-acetylneuraminic acid (sialic acid). Glycan structures are depicted in symbols according to the Consortium for Functional Glycomics nomenclature, with linkage information according to Oxford nomenclature, as shown in the key.

determined. The remaining nine contained either complex-type structures or mixed populations [178].

We have since performed site-specific glycan analysis on gp120_{BG505} isolated from virions expressed in a similar lymphoid cell line [173]. This allowed for a comparison with BG505 SOSIP.664 trimers expressed in both human embryonic kidney (HEK) cells (as per previous analyses), and under equivalent conditions to current Good Manufacturing Practices (cGMP) in a Chinese hamster ovary (CHO) cell line. The analysis revealed that sites occupied by exclusively oligomannose-type glycans on virally derived Env were largely conserved on recombinant SOSIP.664s. This is reassuring considering a large proportion of glycan-targeting bnAbs recognize the oligomannose-type glycans at these sites (Fig. 2). However, there were some key differences between virally derived and recombinant Envs. Namely, virally derived Envs displayed increased levels of glycosylation processing, both in terms of the relative amount of complex-type glycosylation and in terms of the structures present (i.e., complex-type glycans on virally derived Envs were more branched). This discrepancy was generally attributed to several complex-type PNGS on virally derived Env that contained mixed populations of glycans on the SOSIP.664 trimers. We propose that this is due to the membrane-bound nature of virally derived Envs and will discuss this further in the **Membrane tethering** section.

The Paulson laboratory has also compared the glycosylation of virally derived Env from three strains (JR-FL, BG505, and B41), produced in peripheral blood mononuclear cells (PBMCs), with their corresponding SOSIP.664 trimers, produced in HEK cells, using their aforementioned site-specific classification method [174]. Their results were in general agreement with our observations that mixed sites on SOSIP.664 trimers tended to be fully processed on the virally derived Env. Thus, while there is some differential processing between viral and recombinant Env, many key bnAb epitopes are conserved. In terms of immunogen design, it is currently unknown whether absolute mimicry of viral glycosylation is required. This is likely to depend on the specific epitope targeted, for example, if the epitope mainly comprises the conserved base of the glycan.

Glycan clustering and the intrinsic mannose patch

This abundance of oligomannose-type glycans on Env is somewhat unusual given the virus derives its glycan shield from the host cell glycosylation machinery. This typically follows a highly ordered pathway whereby oligomannose-type precursors are trimmed and rebuilt as complex- and/or hybrid-type glycans (Fig. 4). Two hypotheses existed as to why Env glycosylation diverges from that typically observed on mammalian glycoproteins. Either a

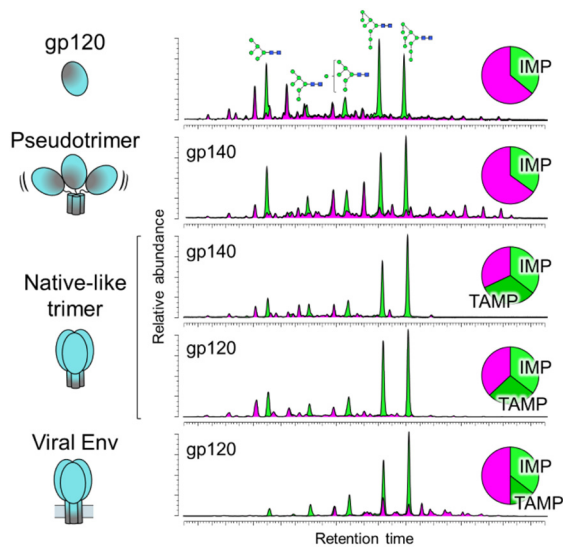


Fig. 5. Glycan clustering and protein structure limit glycosylation processing on HIV-1. Quantitative glycan analysis of monomeric gp120, pseudotrimers, native-like trimers, and virally derived Env. For comparison, data for both gp120 and gp140 (gp120 + truncated gp41) from native-like trimers have been included, only data for virally derived gp120 were available [168,173]. Each construct is based on the BG505 sequence containing the T332N mutation. Glycans were enzymatically released, fluorescently labeled, and analyzed by hydrophilic interaction liquid chromatography–ultraperformance liquid chromatography. Oligomannose-type glycans were quantified by their susceptibility to digestion with Endoglycosidase H. The chromatograms reveal a population of oligomannose-type glycans (green) intrinsic to all Env constructs, termed the intrinsic mannose patch (IMP). Only native-like trimers and virally derived Envs display the additional trimer-associated mannose patch (TAMP) signature, attributed to additional steric protection from processing.

proportion of Env glycoproteins are exiting the glycosylation pathway before encountering the later enzymes, or steric constraints exist within Env that are preventing complete processing by the earlier enzymes, or a combination of the two. Several pieces of evidence support the model of steric hindrance.

First, a proportion of oligomannose-type glycans are resistant to endoplasmic reticulum (ER) α -mannosidase I (the enzyme responsible for trimming $\text{Man}_9\text{GlcNAc}_2$ to $\text{Man}_8\text{GlcNAc}_2$, Fig. 4) digestion *in vitro* [159]. Expressing gp120 with kifunensine (an α -mannosidase I inhibitor) generates a glycoprotein bearing almost exclusively $\text{Man}_9\text{GlcNAc}_2$ structures, replicating the immature glycoprotein found in the early ER. Kinetic analysis of the hydrolysis of $\text{Man}_9\text{GlcNAc}_2$ to $\text{Man}_8\text{GlcNAc}_2$ revealed approximately half of the $\text{Man}_9\text{GlcNAc}_2$ to be rapidly trimmed to $\text{Man}_8\text{GlcNAc}_2$, with the remaining $\text{Man}_9\text{GlcNAc}_2$ processed at a much slower rate. However, there remained a proportion of $\text{Man}_9\text{GlcNAc}_2$ (~30%) that

could not be hydrolyzed, even after exhaustive digestion. The resistance of these glycans to digestion *in vitro* supports the model of steric hindrance, likely caused by the high density of glycans on gp120 preventing α -mannosidases accessing their substrate glycans.

Each gp120 subunit contains between 18 and 33 (median, 25) PNGS [39]. To elucidate whether glycan density is the limiting factor preventing complete processing of the glycan shield, the number of PNGS on the outer domain of gp120 was correlated with the abundance of oligomannose-type glycans on sequences isolated from an individual over the course of infection, and on a cross-clade panel of 29 strains [157]. In both instances, a strong correlation was observed. This correlation was not seen when comparing the abundance of oligomannose-type glycans with the total number of PNGS on gp120 for the cross-clade panel (though it was for the infected patient sequences), suggesting that the incomplete processing observed on gp120 is driven by local glycan density, rather than overall glycan number. Similarly, Stewart-Jones *et al.* [149] observed the number of glycan processing steps to be significantly lower for “crowded” glycans (those with more than 15 PNGS within a 50-Å radius) than for “dispersed” glycans (those with fewer than 15 PNGS within a 50-Å radius).

The extent to which individual glycans contribute to the steric hindrance of glycosylation enzymes was investigated by the systematic site-directed mutagenesis of all the PNGS on gp120_{BaL}, by mutating each Asn within the glycosylation sequon to Ala [156]. Although the removal of individual sites did not have a severe effect on the abundance of oligomannose-type glycans, several site deletions resulted in a larger than expected loss of $\text{Man}_9\text{GlcNAc}_2$, often accompanied by a compensatory increase in the lower oligomannose species, $\text{Man}_{5-8}\text{GlcNAc}_2$. The glycan sites accounting for the largest decrease in $\text{Man}_9\text{GlcNAc}_2$ generally mapped to the outer domain of gp120, further supporting a model whereby localized glycan clustering is sterically hindering early glycosylation processing. Thus, the loss of a PNGS within such clusters would increase the accessibility of neighboring glycans so that multiple nearby glycans exhibit increased processing. In further support of this hypothesis, it has recently been confirmed by site-specific glycan analysis that the disruption in glycan processing upon the loss of a PNGS is largely limited to those sites adjacent to the missing glycans [179].

Thus, while the glycan structures present on most glycoproteins are determined by the host cell, HIV-1 is able to partly modulate its glycosylation processing through the number and position of PNGS, as determined by the viral sequence. The number of PNGS on Env is conserved both across clades and longitudinally throughout infection [157,158]. The

resulting high glycan density on Env (and gp120 in particular) limits the actions of α -mannosidases and results in a large population of oligomannose-type glycans. This principle is illustrated in a model of the ER α -mannosidase I enzyme binding a substrate Man₉GlcNAc₂ glycan on the outer domain of gp120, which reveals extensive clashes with the surrounding glycans [171]. A similar phenomenon has been observed on the glycoprotein complex of Lassa virus, which also exhibits high localised glycan density resulting in under processed oligomannose-type clusters [180]. The oligomannose-type glycans of gp120 are therefore an inherent feature of the glycoprotein, known as the “intrinsic mannose patch” (IMP), and to some extent, all Env constructs will display this glycan signature (Fig. 5). Encouragingly, many of the aforementioned glycan-targeting bnAbs recognize the oligomannose-type glycans of the IMP. The overall resilience of the oligomannose population to sequence variation, and its presence on both immunogens and viral Env, supports this feature as a conserved target for vaccine design.

Protein structure and the trimer-associated mannose patch

As the focus of immunogen design shifted from monomeric gp120 toward trimeric Env, so did the requirement to categorize glycans from native-like immunogens. It had been observed that trimeric Envs often displayed even higher levels of under-processed oligomannose-type glycosylation [94,158,159,168]. The discrepancy in the abundance of oligomannose-type structures between monomeric and trimeric Env suggests that these structures are derived from an additional mechanism to the one driving the formation of the IMP. It was hypothesized that the “trimer-associated mannose patch” (TAMP) arose due to glycan-glycan and glycan-protein interactions at the protomer interface further sterically restricting processing enzymes [45,158,159].

Quantitative glycan analysis soon revealed that the TAMP glycan signature was only present on native-like trimers, with non-native pseudotrimers often displaying glycosylation patterns similar to that of monomeric gp120 (Fig. 5) [92,94,168]. Negative-stain EM revealed that non-native pseudotrimers often form open, irregular structures, in stark contrast to the well-ordered, propeller-shaped format of native-like trimers [92,94,171]. This structural difference is sufficient to explain the discrepancy in glycosylation, as open, irregular structures lack the additional steric protection of native-like trimers and allow for more complete glycan processing. Thus, although most Env proteins have a population of oligomannose-type glycans atypical of mammalian glycosylation, only native-like trimers display the additional TAMP signature. As such,

glycosylation profiling is becoming a widely adopted tool that can be used to readily distinguish between native-like and misfolded trimers and guide the selection of immunogens [181].

Site-specific glycan analysis was applied to sequence-matched gp120_{BG505}, uncleaved pseudotrimers, and native-like, BG505 SOSIP.664 trimers. The results revealed for the first time the individual PNGS that contribute to the TAMP. As hypothesized, sites located at the protomer interfaces on the native-like BG505 SOSIP.664 trimers displayed restricted glycan processing compared to both the pseudotrimers and monomeric gp120 (Fig. 3a). This was most significant at sites N156, N160, N197, and N276, which had >40 percentage point increase in oligomannose-type glycans on BG505 SOSIP.664 compared to gp120 [168].

Crucially, in support of the native-like configuration of SOSIP.664 trimers, the TAMP signature is present on both virally derived Envs and native-like trimers (Fig. 5), although it is somewhat smaller on viral Env [173]. This is likely due to “TAMP sites” N197 and N276 displaying predominantly complex-type glycosylation on viral Env [173,174]. The N156 and N160 “TAMP sites” are, however, conserved oligomannose-type sites in most instances [173,174]. The N160 site has been reported as a complex-type site in JR-FL virions, highlighting potential strain-specific differences [174].

Cell-specific glycosylation

While the abundant population of oligomannose-type glycans observed on Env is attributed to steric constraints imposed by the protein itself, the more accessible regions of the glycoprotein are subject to processing by the host cell's glycosylation pathway. Such processing is cell type-specific, dependent on the repertoire of glycosidases and glycosyltransferases expressed by the host cell [182].

A comparative analysis of BG505 SOSIP.664 derived from CHO cells and HEK cells illustrates the nature of protein- and cell-directed Envelope glycosylation [94]. Both CHO and HEK-derived material display similar levels of protein-directed glycosylation: oligomannose-type glycans account for 55% and 56% of the total glycan pool, respectively, with individual oligomannose species exhibiting similar distributions [94]. In contrast, the remaining complex-type glycans present considerable cell-specific differences. This is particularly evident on the gp41 subunit, with CHO-derived material containing substantially more sialylated structures than HEK-derived BG505 SOSIP.664 (Fig. 3e) [94]. The abundance of sialic acid is known to impact the antigenicity and immunogenicity of Env. Kong *et al.* [150] observed that gp120 expressed in an insect cell line modified to impart asialylated mammalian-type glycans was significantly more

immunogenic than sialylated gp120 expressed in HEK cells.

A comparison of virally derived gp120 produced in PBMCs and gp120 from pseudovirus produced in HEK cells revealed similar cell-specific differences [183]. Namely, sialylated glycans from material produced in PBMCs displayed primarily α 2-6-linkages, whereas HEK-derived material displayed only α 2-3-linked structures [183]. It can be noted that α 2-6-linked sialylated glycans have previously been associated with anti-inflammatory effects; thus, there may be potential immunological consequences of these structures [184].

Like oligomannose-type glycans, complex-type glycans have emerged as important in regard to the formation of bnAb epitopes. Some bnAbs, such as PGT121 display promiscuous recognition of both oligomannose- and complex-type glycans in glycan arrays [185]. Antibodies such as PGT151 are dependent on tri- and tetra-antennary structures at the gp120-gp41 interface [186], while α 2-6-linked sialylated hybrid- and complex-type glycans have been implicated in the development and binding of apex-targeting bnAbs such as PG16 and the CAP256-VRC26 lineage [187–189]. Interactions between the sialic acid residues of Env and Siglecs (sialic acid-binding immunoglobulin-like lectins) have also been observed to play an important role in the infection of macrophages, which express low levels of cell-surface CD4 [190]. Thus, cell-directed glycosylation can play a role in both viral infectivity and bnAb binding, and understanding the factors influencing complex-type glycosylation may have implications in guiding immunogen design, for instance, when choosing expression cell lines.

Membrane tethering

The majority of glycan analyses have been performed on soluble Env constructs due to the difficulties associated with expressing and purifying full-length, membrane-bound Env. Until recently, the impact of membrane tethering on Env glycosylation had remained largely unaddressed. Analyses of virally derived Envs, while performed on membrane-bound material, generally did not control for expression cell-line, known to influence glycosylation processing [173,174]. However, recent studies by Rantalainen *et al.* and Cao *et al.* [174,191], directly compare the glycosylation of membrane-bound Envs with their corresponding soluble SOSIP.664 trimers expressed in the same cell lines. The differences observed between membrane-bound Env and SOSIP.664 are reminiscent of the differences observed between viral Env and SOSIP.664, in that sites containing mixed populations of glycans on the soluble SOSIP.664 trimer typically displayed only fully processed, complex-type glycan structures on the full-length construct [191]. It was hypothe-

sized that the more complete processing observed on full-length constructs is due to membrane-bound Env being kept in closer proximity to the membrane-bound glycosylation enzymes throughout the ER and Golgi (Fig. 3d), as opposed to soluble Env which is released into the lumen [173,174]. In line with this hypothesis, membrane-bound CD59 also displays increased processing compared to its soluble counterpart [192].

Alternatively, it has been hypothesized that the closer proximity of the membrane to full-length constructs, particularly to gp41, would pose additional steric constraints on Env glycosylation processing [171]. In support of this hypothesis, Panico *et al.* [178] observed exclusively oligomannose-type glycans at the membrane-proximal N88 site on virally derived Env. A caveat of all the above studies is that full-length constructs do not contain the SOSIP.664 stabilizing mutations, which may influence glycosylation via a separate mechanism, for example, the speed at which Env transits through the ER.

Signal peptide

Like many membrane proteins, immature Env contains a signal peptide at the N terminus responsible for directing the nascent peptide to the ER, which is subsequently cleaved off prior to transport of the maturing peptide through the ER and Golgi (Fig. 3b). The signal peptide strongly influences the processing of Env as it transits through the ER, impacting factors such as trafficking to the ER, the rate of signal peptide cleavage, and the retention time of Env within the ER [193–198]. Natural variation exists within the signal peptides of Env. For example, TF viral isolates often over represent His at position 12 of the signal peptide, a signature not usually observed in chronic phase viral isolates [198]. Given the influence of the signal peptide on the molecular biology of Env, the laboratory of Fauci sought to determine the impact of the natural variation observed between the signal peptides isolated from TF viruses and from a chronically infected patient on the glycosylation, structure, and antigenicity of Env. By creating four constructs containing either the gp120 sequence isolated from a TF or chronic virus, in combination with either their natural signal peptide, or that of the other virus (Fig. 3b), Yolitz *et al.* [175] assessed glycosylation and antigenicity by binding to various lectins and bnAbs. They found that despite gp120 sequences encoding for the same mature protein, the presence of a signal peptide from the TF viral isolate resulted in an increase in oligomannose-type glycosylation (as judged by binding to the *Narcissus pseudonarcissus* lectin and bnAb 2G12, specific to α -linked mannose residues), while the presence of a signal peptide from chronic-stage virus increased the amount of complex-type

glycosylation (as judged by binding to *Ricinus communis* lectin, which preferentially binds structures terminating in galactose).

The results of Yolitz *et al.* are in line with the glycan analyses of Go *et al.* [165], who observed higher levels of oligomannose-type glycosylation on TF viruses than those isolated from chronically infected patients. However, a similar comparison of SOSIP.664 trimers isolated from early and late time points by the Paulson laboratory showed very similar glycan processing [191]. Nevertheless, the findings of Yolitz *et al.* implicate the signal peptide, a domain that does not appear in the mature protein, as a regulator of glycosylation processing.

Occupancy

Potential *N*-glycosylation site occupancy has recently emerged as an important aspect of Env glycosylation. The Paulson laboratory employed site-specific glycan classification analysis to BG505 SOSIP.664 trimers to assess PNGS occupancy [163]. They found that overall occupancy was very high: all but four of the 28 PNGS (V1/V2 and gp41 sites N190, N197, N618, and N625) were >90% occupied and none were <50% occupied [163]. Extension of their method to native-like trimers derived from different strains (JR-FL, B41, CRF02_AG_250, 327c, PC64) confirmed that the V1/V2 and gp41 sites were most susceptible to under-occupancy [174,191]. The reports concerning occupancy of gp41 sites, particularly N625, seem to vary, perhaps due to methodological or sample variation. For example, Guttman *et al.* [199] have reported occupancy <20% at this site in BG505 and KNH1144 SOSIP.664 trimers, which is also compatible with the known epitope of the 35O22 bnAb [82].

Interestingly, virally derived and membrane-bound Env trimers are generally more occupied than their SOSIP.664 counterparts [173,174,191]. Although the mechanism through which PNGS under-occupancy arises is not yet understood, we hypothesize that the codon-optimization process, used to increase the yield of recombinant SOSIP.664 trimers, may increase the rate of protein translation and folding and reduce the chance of an *N*-glycan being attached [173]. This may be particularly true of glycans in the V1/V2 region where several PNGS are in close proximity.

Considerations for immunogen manufacture

All of the above factors influence the glycosylation processing of Env to varying degrees. Although the extent to which Env immunogens must mimic the native viral envelope spike is not yet known, there are nevertheless important considerations for immunogen design and manufacture. In particular,

expression cell-type and PNGS under-occupancy may yet emerge as crucial aspects in the cGMP production of Env immunogens, as under-occupancy may introduce unfavourable, immunodominant autologous nAb epitopes. This is particularly relevant in light of Wagh *et al.* [76], observing increased neutralization breadth in individuals infected with TF viruses with more intact glycan shields.

Understanding the Nature of Glycan-Dependent bnAb Epitopes

The structural characterization of multiple bnAbs in complex with Env by both x-ray crystallography and EM has enabled a detailed description of the epitopes of many bnAb (Table 1) [202,213]. Furthermore, it has revealed many of the unusual antibody features required for broad neutralization. Nevertheless, there remained many unknowns about the precise nature of glycan epitopes. This is, in part, due to difficulties in resolving extremely heterogeneous glycans with structural techniques that rely on the averaging of many molecules to reveal the consensus structure [122]. Glycan arrays are also a useful tool in assessing the glycan-binding properties of bnAbs, although these too have limitations (e.g., if the epitope comprises protein components). Site-specific glycan analysis has gone some way to bridging these knowledge gaps. While there is generally good agreement of the precise structures occupying glycan epitopes between glycan analyses and structural studies/arrays, a few discrepancies remain. For example, there are several reports on the preference of apex-targeting bnAbs PG9 and PG16 for complex- or hybrid-type glycans (specifically α 2-6-linked sialylated structures) at the N156 site [187,188,208]. However, these structures are seldom seen at this site in glycan analyses of recombinant, soluble trimers or virally derived Env [38,163,173,174].

Beyond Antigenic Mimicry

Native-like trimers are excellent structural mimics of viral Env, display similar glycosylation profiles, and are capable of binding bnAbs. Yet immunogenicity studies with native-like trimers have only routinely elicited autologous Tier-2 nAbs and heterologous Tier-1 nAbs [107,116–121]. Weakly neutralizing heterologous Tier-2 antibodies have also been reported in rabbits [104]. With the exception of cows (whose antibodies naturally contain very long HCDR3), the potent bnAbs required for a protective vaccine have not yet been generated via immunization with native-like trimers [58]. The elicitation of bnAbs against the

Table 1. Examples of glycan-targeting broadly neutralizing antibodies and their glycan epitopes

| Epitope | bnAb | PNGS | Glycan type | Refs. | |
|------------------------|-----------------------|-----------------------------|---|--|---------------|
| Outer domain glycans | PGT130 | N301, N332/N334 | Oligomannose | [200,201] | |
| | 2G12 | N295, N332, N339, N392 | Oligomannose, specifically α 1-2-linked motifs on Man ₈₋₉ GlcNAc ₂ structures | [124–130] | |
| | VRC-PG05 | N262, N295, N448 | Oligomannose | [123] | |
| | PGT135 | N295, N332, N386, N392 | Oligomannose | [137,176,201] | |
| | PGT128 | N156, N295, N301, N332/N334 | Oligomannose | [37,136,200,201] | |
| | PGT122 | N137, N156, N301, N332 | Oligomannose | [149,201,202] | |
| | PGT121 | N137, N156, N301, N332/N334 | Oligomannose or complex | [142,185,200,201] | |
| | BG18 | N156, N332, N386, N392 | Oligomannose, possibly complex at N156 | [203] | |
| | 10-1074 | N156, N301, N332 | Oligomannose, possibly complex at N156 | [185,204] | |
| | V1/V2 glycans | PGT145 | N160 | Oligomannose | [134,201] |
| CH04 | | N160 | Kifunensine abrogates neutralization (cannot tolerate Man ₉ GlcNAc ₂) | [205] | |
| PGDM1400 | | N160 | Kifunensine reduces/abrogates neutralization (cannot tolerate Man ₉ GlcNAc ₂) | [206] | |
| VRC38.01 | | N133, N156, N160 | <i>N</i> -acetylglucosamine core of N133 | [207] | |
| PG9 and PG16 | | N173 (N156), N160 | Oligomannose at N160, hybrid or bi-antennary structures at N156/N173, specifically containing α 2-6-linked terminal sialic acids | [187,188,208–211] | |
| CAP256–VRC26 (lineage) | | N156, N160 | Oligomannose at N160, hybrid at N156, or bi-, tri-, tetra-antennary structures containing α 2-6-linked terminal sialic acids | [133,189] | |
| PCT64 (lineage) | | N156, N160 | Oligomannose, preferentially Man ₅ GlcNAc ₂ | [212] | |
| 3BNC117 | | N197, N276 | <i>N</i> -acetylglucosamine cores | [134,149] | |
| PGV04 (VRC-PG04) | | N276, N301, N363, N386 | Enzymatic de-glycosylation does not affect binding (no strong glycan-dependence) | [213,214] | |
| HJ16 | | N276 | <i>N</i> -acetylglucosamine core | [215–217] | |
| CD4bs proximal | IOMA | N197, N276, N363 | Complex, minor contact with oligomannose glycan at N363 | [204] | |
| | 179NC75 | N276 | Oligomannose or hybrid ^a | [218] | |
| | VRC01 | N276 | <i>N</i> -acetylglucosamine core | [131,149] | |
| | gp120-gp41, interface | 8ANC195 | N234, N276, N637 | Kifunensine did not affect neutralization (can tolerate Man ₉ GlcNAc ₂) | [219,220] |
| | | PGT151 | N611, N637 | Complex, specifically tri- and tetra-antennary structures | [186,221,222] |
| | | VRC34.01 | N88 | Kifunensine, swainsonine or GnTI ^{-/-} cells ^b minimally affect neutralization (not dependent on complex structures) | [223] |
| | | ACS202 | N88 | Kifunensine, or GnTI ^{-/-} cells minimally affect neutralization (not dependent on complex structures) | [224] |
| | 35O22 | N88, N230, N241 | Oligomannose | [149,225] | |

^a In Freund *et al.* [218] the loss of binding of 179NC75 following expression of BG505 SOSIP.664 trimers with kifunensine was used to argue a dependency on complex-type glycans. However, they also report a loss of binding to gp120 after digestion with Endoglycosidase H (which cleaves oligomannose- and hybrid-type glycans). This suggests that 179NC75 recognizes Man₈₋₅GlcNAc₂ or hybrid-type structures. In line with this, site-specific glycan analysis of BG505 SOSIP.664 trimers reports predominantly Man₈₋₅GlcNAc₂ glycans at the N276 site, with a small population of hybrid-type structures [38].

^b Treatment with swainsonine (α -mannosidase II inhibitor) results in oligomannose- and hybrid-type glycosylation. Expression in GnTI^{-/-} cells (deficient in *N*-acetylglucosaminyltransferase I) results in Man₅₋₉GlcNAc₂ structures only.

envelope spike will inevitably be challenging. Broadly neutralizing epitopes are broad due to their conserved nature, although conservation generally correlates with poor immunogenicity as otherwise the epitope would have been selected against by immune pressure. In this section, we will address some of the strategies aimed at increasing the immunogenicity of this target.

Mimicry of glycan epitopes: chemical approaches

The first of many glycan-binding bnAbs to be discovered was 2G12. To date, this the only bnAb identified to exclusively bind glycans. The 2G12 antibody recognizes clusters of α 1-2-linked mannose motifs present on the Man₈₋₉GlcNAc₂ structures of the IMP (Fig. 2) [124–130]. Glycan-based vaccine

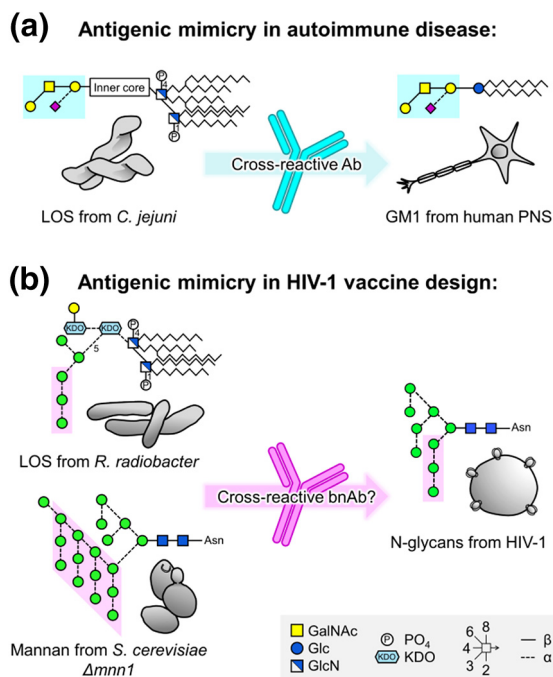


Fig. 6. Antigenic mimicry in autoimmune disease and HIV-1 vaccine design. (a) Antigenic mimicry of lipooligosaccharides (LOS) from *C. jejuni* causes Guillain–Barré syndrome, an autoimmune response against the GM1 ganglioside in the peripheral nervous system (PNS). (b) LOS from *Rhizobium radiobacter* Rv3 and *Saccharomyces cerevisiae* deficient in the Mnn1 gene display glycan structures terminating in α 1-2-linked mannose residues, mimicking the 2G12 epitope on HIV-1. GalNAc, N-acetylgalactosamine; Glc, glucose; GlcN, glucosamine; KDO, 2-keto-3-deoxy-D-manno-octulosonic acid. Figure adapted from Scanlan *et al.* [46].

strategies have thus far centered on the design of immunogens that mimic the 2G12 epitope. Several groups have created immunogens displaying multivalent, chemically synthesised oligomannose-type glycans attached to various scaffolds, including the following: carbohydrate, cholic acid, cyclic peptide, dendrimer, DNA, and gold (reviewed by Wang [226]). Although many of these constructs are able to bind 2G12, and could elicit antibodies with specificity to oligomannose-type glycans, none have induced antibodies capable of neutralizing HIV-1. This may be due to the inability of these antibodies to recognize clusters of oligomannose-type glycans as they are presented on Env, perhaps due to their non-domain-exchanged structures. Domain-exchange (at least for 2G12) is a requirement for HIV-1 neutralization [227].

The mimicry of other glycan-targeting bnAb epitopes has been explored with the design of peptide-based immunogens. Glycopeptides based on the V1/V2 region, containing the N156 and N160 PNGS, are capable of binding both apex targeting bnAbs and their unmutated common ancestors [208,228,229]. Similarly, glycopeptides based on the V3 region,

containing the N332 PNGS, bound outer domain targeting bnAbs such as PGT128 [230]. In immunogenicity studies, V3 glycopeptides elicited antibodies capable of binding gp120 but unable to neutralize virus [230,231]. The failure of antigenic mimics of bnAb epitopes to induce bnAbs further highlights the complicated relationship between the antigenicity and immunogenicity of these epitopes.

Mimicry of glycan epitopes: biological approaches

A potential failure of the above strategies may be that, while the oligomannose-type glycans of the HIV-1 glycan are not typically observed on mammalian glycoproteins, they are still fundamentally “self” structures. As noted above, this poses a challenge for the development of glycan-targeting bnAbs, as cross-reactive B cells are likely to be deemed autoreactive and will be negatively selected for. The fact that bnAbs generally do not arise until after several years of infection could support the notion that they are operating at the edge of immunological tolerance, or may simply reflect the long maturation process. However, tolerance to self-structures can be broken. For example, in some cases, infection with *C. jejuni* elicits an antibody response against its bacterial lipooligosaccharides that is able to bind nearly identical structures on the gangliosides of the peripheral nervous system (Fig. 6a) [148]. The resulting autoimmune disease, Guillain–Barré syndrome, provides proof of concept that immunological tolerance to “self” glycans can be broken by exposure to microorganisms bearing similar structures [46].

It was hypothesized that 2G12 may have originally evolved to recognize high-mannose structures on pathogens other than HIV-1 [46]. Scanlan explored this further by assessing the reactivity of 2G12 to various yeast species [146]. Yeast typically display high-mannose structures that comprise an α 1-6-linked mannose backbone from which branch repetitive α 1-2-linked mannose motifs (i.e., a key feature of the 2G12 epitope), sometimes capped with α 1-3-linked mannose residues. Of the yeast species tested, 2G12 was able to bind to two, binding *Candida albicans* with similar affinities to that of gp120 [146,232]. This interaction was glycan dependent as binding was inhibited by D-fructose, a known ligand for the 2G12 binding site. In addition, a non-glycan-dependent control bnAb was unable to bind any of the yeasts. Thus, the 2G12 antibody may equally well be described as an anti-*Candida* antibody with cross-reactivity to HIV-1 [146].

Scanlan went on to formally elucidate the relationship between the antigenicity and immunogenicity of yeast glycosylation [233]. *Saccharomyces cerevisiae* deficient in *mnn1*, the gene responsible for the α 1-3-linked mannose caps, displays mannans terminating in the α 1-2-linked mannose motif (Fig. 6b). Immunization of rabbits with *S. cerevisiae* Δ *mnn1* elicited antibodies with similar glycan specificities to 2G12. Furthermore,

the sera displayed weakly neutralizing activity against HIV-1 [233]. The Doms laboratory also investigated using yeast as an HIV-1 immunogen. By knocking-out three genes they produced *S. cerevisiae* displaying predominantly Man₈GlcNAc₂ glycan structures. Although these yeasts now displayed a “self” glycan structure, immunization of rabbits elicited oligomannose-specific antibodies, capable of binding monomeric gp120, but unable to neutralize the virus [234]. As mentioned previously, an explanation for this apparent contradictory result may be that while the elicited antibodies were capable of recognizing isolated oligomannose-type glycans, they were not able to recognize densely packed clusters of oligomannose-type glycans as they are presented on Env. Thus, a logical next step may be to present immunogenic yeast glycan structures in the context of Env, for instance, by expressing Env in yeast. The resulting immunogens should display clusters of “non-self” glycans capable of breaking immunological tolerance to the clusters of oligomannose-type glycans present on Env.

A similar phenomenon has been observed by the Pantophlet laboratory. As per *S. cerevisiae* $\Delta mnn1$ mannans, the lipooligosaccharides of *Rhizobium radiobacter* Rv3 bacteria contain a glycan motif analogous to the 2G12 epitope on HIV-1 (Fig. 6b) [235,236]. Immunization of mice with *R. radiobacter* Rv3 also generated antibodies capable of weakly cross-reacting with HIV-1 [235,237], representing another candidate micro-organism to investigate for a potential HIV-1 glycan-based vaccine.

Mimicking bnAb development in natural infection

The development of bnAbs in a subset of infected individuals typically only occurs after a few years of infection. Neutralizing antibodies, however, arise early in infection and exert a considerable selection pressure on the virus. Repeated rounds of viral escape and antibody evolution ultimately drive the development of nAb breadth [70,132,133]. The discovery that native-like trimers can induce autologous Tier-2 nAbs could therefore be an important first step towards development of bnAbs. Accordingly, a line of research is to attempt to mimic the development of bnAbs in natural infection by immunizing with a longitudinal sequence of trimers based on the Envs from an infected individual who went on to generate bnAbs. An in-depth understanding of viral and antibody co-evolution throughout the course of natural infection will no doubt prove invaluable in aiding the design of such immunization regimens [132,191,212,238,239].

An alternative, albeit closely linked, approach is to design immunogens specifically targeted to initiate bnAb development. As noted previously, the development of bnAbs requires the activation of B cell lineages expressing gl-bnAbs, which are typically very poor at binding Env trimers [61–64]. This approach therefore involves the modification of immunogens in order to

better engage gl-bnAbs [240], usually by the deletion of PNGS and variable loops to remove the steric occlusions which prevent gl-bnAb binding [241–243]. The laboratories of Schief and Nussenzweig have reported that BG505 SOSIP trimers containing, among other mutations, N133 and N137 PNGS deletions, are able to bind a germline-reverted version of the outer-domain glycan-targeting bnAb, PGT121 [244]. Immunization of mice engineered to express the predicted germline of PGT121 with this trimer, prior to boosting with a sequence of immunogens containing decreasing modifications, was able to elicit heterologous Tier-2 neutralizing responses [245]. This provides proof of concept that immunization with specifically designed immunogens can initiate bnAb development. There is, however, an apparent conflict between the need to delete PNGS sites in order to initiate bnAb development, and the recent observation that bnAbs were more likely to develop in individuals infected with isolates containing more intact glycan shields [76].

Conclusions

Antigenic mimicry is fundamental to most licensed vaccines. It is widely acknowledged that a protective HIV-1 vaccine will be based on the mimicry of the HIV-1 envelope spike, the sole target for bnAbs raised during infection. In addition to protein mimicry, Env-based immunogens will likely have to exhibit glycan mimicry, as many of the most potent bnAbs isolated to date recognize glycan structures within their epitopes. Thus, the characterization of glycan epitopes and an understanding of the principles governing their correct processing are needed in order to continue to guide the rational design of HIV-1 immunogens. Structural constraints imposed by the formation of native-like trimers restricts aspects of glycosylation processing, thus glycan analysis can help distinguish between native-like and non-native immunogens. However, native-like immunogens alone are not sufficient to induce bnAbs. As broadly neutralizing epitopes are inherently immunoquiescent, it is likely that additional strategies will be required in order to boost their immunogenicity.

Acknowledgments

We thank Ian Wilson, Andrew Ward, Bill Schief, Rich Wyatt, Jim Paulson, John Moore, Rogier Sanders, Robin Shattock, and Raymond Dwek for their support and helpful discussions. This work is supported by the International AIDS Vaccine Initiative (M.C. and D.R.B.), the Bill and Melinda Gates Foundation through the Collaboration for AIDS Discovery (OPP1084519 and OPP1115782, M.C. and D.B.R.), the US National Institute of Allergy and Infectious Diseases (Center for

HIV/AIDS Vaccine Immunology and Immunogen Discovery, UM1AI100663, D.R.B. and M.C.), and the Ragon Institute (D.R.B.). This project has received funding from the European Union's Horizon 2020 (681137) research and innovation programme under grant agreement No. 681137 (K.J.D. and M.C.). K.J.D. also acknowledges the support of a Medical Research Council Career Development Fellowship.

Conflicts of interest: There are no conflicts to declare.

Received 11 February 2019;

Received in revised form 12 April 2019;

Accepted 13 April 2019

Available online 24 April 2019

Keywords:

human immunodeficiency virus;
vaccinology;
antibodies;
glycosylation;
structure

Abbreviations used:

HIV-1, human immunodeficiency virus type 1; Env, envelope spike; AIDS, acquired immune deficiency syndrome; bnAb(s), broadly neutralizing antibody(ies); nAb(s), neutralizing antibody(ies); gl-bnAb(s), germline-bnAb(s); CD4bs, CD4 binding site; CCR5, C-C chemokine receptor type 5; CXCR4, C-X-C chemokine receptor type 4; TF, transmitted/founder; EM, electron microscopy; PNGS, potential *N*-glycosylation sites; BCR, B cell receptor; IMP, intrinsic mannose patch; TAMP, trimer-associated mannose patch; HCDR3, third heavy-chain complementarity-determining regions; CDR, complementarity-determining regions; LOS, lipooligosaccharides; SP, signal peptide; MPER, membrane proximal external region; TM, transmembrane region; CT, cytoplasmic tail; HR1/2, heptad repeat 1 or 2; NFL, native flexibly linked; SC, single-chain; UFO, uncleaved prefusion-optimized; PBMC, peripheral blood mononuclear cell; PNS, peripheral nervous system; CHO, Chinese hamster ovary; HEK, human embryonic kidney; cGMP, current good manufacturing practices; Glc, glucose; Man, mannose; GlcNAc, *N*-acetylglucosamine; Gal, galactose; Fuc, fucose; Neu5Ac, *N*-acetylneuraminic acid (sialic acid); GlcN, glucosamine; KDO, 2-keto-3-deoxy-D-manno-octulosonic acid; ER, endoplasmic reticulum; α -man I and II, α -mannosidase I and II; GnT I, *N*-acetylglucosaminyltransferase I.

References

- [1] World Health Assembly, Declaration of Global Eradication of Smallpox, World Health Organisation, Geneva, 1980.
- [2] A.M. Henao-Restrepo, A. Camacho, I.M. Longini, C.H. Watson, W.J. Edmunds, M. Egger, et al., Efficacy and effectiveness of an rVSV-vectored vaccine in preventing Ebola virus disease: final results from the Guinea ring vaccination, open-label, cluster-randomised trial (Ebola Ca Suffit!), *Lancet*. 389 (2017) 505–518.
- [3] S. Rerks-Ngarm, P. Pitisuttithum, S. Nitayaphan, J. Kaewkungwal, J. Chiu, R. Paris, et al., Vaccination with ALVAC and AIDSVAX to prevent HIV-1 infection in Thailand, *N. Engl. J. Med.* 361 (2009) 2209–2220.
- [4] Antiretroviral Therapy Cohort C, Survival of HIV-positive patients starting antiretroviral therapy between 1996 and 2013: a collaborative analysis of cohort studies, *Lancet HIV* 4 (2017) e349–e56.
- [5] L.F. Johnson, J. Mossong, R.E. Dorrington, M. Schomaker, C.J. Hoffmann, O. Keiser, et al., Life expectancies of South African adults starting antiretroviral treatment: collaborative analysis of cohort studies, *PLoS Med.* 10 (2013), e1001418.
- [6] P. Iyidogan, K.S. Anderson, Current perspectives on HIV-1 antiretroviral drug resistance, *Viruses*. 6 (2014) 4095–4139.
- [7] P.R. Harrigan, M. Whaley, J.S. Montaner, Rate of HIV-1 RNA rebound upon stopping antiretroviral therapy, *AIDS*. 13 (1999) F59–F62.
- [8] H.T. Pham, T. Mesplede, The latest evidence for possible HIV-1 curative strategies, *Drugs Context*. 7 (2018) 212522.
- [9] J.R. Mascola, B.F. Haynes, HIV-1 neutralizing antibodies: understanding nature's pathways, *Immunol. Rev.* 254 (2013) 225–244.
- [10] L.E. McCoy, D.R. Burton, Identification and specificity of broadly neutralizing antibodies against HIV, *Immunol. Rev.* 275 (2017) 11–20.
- [11] M.J. van Gils, Z. Euler, B. Schweighardt, T. Wrin, H. Schuitemaker, Prevalence of cross-reactive HIV-1-neutralizing activity in HIV-1-infected patients with rapid or slow disease progression, *AIDS*. 23 (2009) 2405–2414.
- [12] N.A. Doria-Rose, R.M. Klein, M.M. Manion, S. O'Dell, A. Phogat, B. Chakrabarti, et al., Frequency and phenotype of human immunodeficiency virus envelope-specific B cells from patients with broadly cross-neutralizing antibodies, *J. Virol.* 83 (2009) 188–199.
- [13] P. Hraber, M.S. Seaman, R.T. Bailer, J.R. Mascola, D.C. Montefiori, B.T. Korber, Prevalence of broadly neutralizing antibody responses during chronic HIV-1 infection, *AIDS*. 28 (2014) 163–169.
- [14] B. Julg, P.T. Liu, K. Wagh, W.M. Fischer, P. Abbink, N.B. Mercado, et al., Protection against a mixed SHIV challenge by a broadly neutralizing antibody cocktail, *Sci. Transl. Med.* 9 (2017).
- [15] J.R. Mascola, G. Stiegler, T.C. VanCott, H. Katinger, C.B. Carpenter, C.E. Hanson, et al., Protection of macaques against vaginal transmission of a pathogenic HIV-1/SIV chimeric virus by passive infusion of neutralizing antibodies, *Nat. Med.* 6 (2000) 207–210.
- [16] B. Julg, L.J. Tartaglia, B.F. Keele, K. Wagh, A. Pegu, D. Sok, et al., Broadly neutralizing antibodies targeting the HIV-1 envelope V2 apex confer protection against a clade C SHIV challenge, *Sci. Transl. Med.* 9 (2017).
- [17] M. Shingai, O.K. Donau, R.J. Plishka, A. Buckler-White, J.R. Mascola, G.J. Nabel, et al., Passive transfer of modest titers of potent and broadly neutralizing anti-HIV monoclonal antibodies block SHIV infection in macaques, *J. Exp. Med.* 211 (2014) 2061–2074.
- [18] K.O. Saunders, A. Pegu, I.S. Georgiev, M. Zeng, M.G. Joyce, Z.Y. Yang, et al., Sustained delivery of a broadly neutralizing antibody in nonhuman primates confers

- long-term protection against simian/human immunodeficiency virus infection, *J. Virol.* 89 (2015) 5895–5903.
- [19] J.R. Mascola, M.G. Lewis, G. Stiegler, D. Harris, T.C. VanCott, D. Hayes, et al., Protection of Macaques against pathogenic simian/human immunodeficiency virus 89.6PD by passive transfer of neutralizing antibodies, *J. Virol.* 73 (1999) 4009–4018.
- [20] T.W. Baba, V. Liska, R. Hofmann-Lehmann, J. Vlasak, W. Xu, S. Ayehunie, et al., Human neutralizing monoclonal antibodies of the IgG1 subtype protect against mucosal simian-human immunodeficiency virus infection, *Nat. Med.* 6 (2000) 200–206.
- [21] P.W. Parren, P.A. Marx, A.J. Hessel, A. Luckay, J. Harouse, C. Cheng-Mayer, et al., Antibody protects macaques against vaginal challenge with a pathogenic R5 simian/human immunodeficiency virus at serum levels giving complete neutralization in vitro, *J. Virol.* 75 (2001) 8340–8347.
- [22] A.J. Hessel, P. Poignard, M. Hunter, L. Hangartner, D.M. Tehrani, W.K. Bleeker, et al., Effective, low-titer antibody protection against low-dose repeated mucosal SHIV challenge in macaques, *Nat. Med.* 15 (2009) 951–954.
- [23] A. Pegu, Z.Y. Yang, J.C. Boyington, L. Wu, S.Y. Ko, S.D. Schmidt, et al., Neutralizing antibodies to HIV-1 envelope protect more effectively in vivo than those to the CD4 receptor, *Sci. Transl. Med.* 6 (2014), 243ra88.
- [24] A.J. Hessel, E.G. Rakasz, D.M. Tehrani, M. Huber, K.L. Weisgrau, G. Landucci, et al., Broadly neutralizing monoclonal antibodies 2F5 and 4E10 directed against the human immunodeficiency virus type 1 gp41 membrane-proximal external region protect against mucosal challenge by simian-human immunodeficiency virus SHIVBa-L, *J. Virol.* 84 (2010) 1302–1313.
- [25] R. Gautam, Y. Nishimura, A. Pegu, M.C. Nason, F. Klein, A. Gazumyan, et al., A single injection of anti-HIV-1 antibodies protects against repeated SHIV challenges, *Nature.* 533 (2016) 105–109.
- [26] P.W. Parren, H.J. Ditzel, R.J. Gulizia, J.M. Binley, C.F. Barbas 3rd, D.R. Burton, et al., Protection against HIV-1 infection in hu-PBL-SCID mice by passive immunization with a neutralizing human monoclonal antibody against the gp120 CD4-binding site, *AIDS.* 9 (1995) F1–F6.
- [27] M.C. Gauduin, P.W. Parren, R. Weir, C.F. Barbas, D.R. Burton, R.A. Koup, Passive immunization with a human monoclonal antibody protects hu-PBL-SCID mice against challenge by primary isolates of HIV-1, *Nat. Med.* 3 (1997) 1389–1393.
- [28] J. Pietzsch, H. Gruell, S. Bournazos, B.M. Donovan, F. Klein, R. Diskin, et al., A mouse model for HIV-1 entry, *Proc. Natl. Acad. Sci. U. S. A.* 109 (2012) 15859–15864.
- [29] M. Deruaz, B. Moldt, K.M. Le, K.A. Power, V.D. Vrbanac, S. Tanno, et al., Protection of humanized mice from repeated intravaginal HIV challenge by passive immunization: a model for studying the efficacy of neutralizing antibodies in vivo, *J. Infect. Dis.* 214 (2016) 612–616.
- [30] C.A. Stoddart, S.A. Galkina, P. Joshi, G. Kosikova, B.R. Long, E. Maidji, et al., Efficacy of broadly neutralizing monoclonal antibody PG16 in HIV-infected humanized mice, *Virology* 462-463 (2014) 115–125.
- [31] M. Sun, Y. Li, Z. Yuan, W. Lu, G. Kang, W. Fan, et al., VRC01 antibody protects against vaginal and rectal transmission of human immunodeficiency virus 1 in hu-BLT mice, *Arch. Virol.* 161 (2016) 2449–2455.
- [32] M. Veselinovic, C.P. Neff, L.R. Mulder, R. Akkina, Topical gel formulation of broadly neutralizing anti-HIV-1 monoclonal antibody VRC01 confers protection against HIV-1 vaginal challenge in a humanized mouse model, *Virology.* 432 (2012) 505–510.
- [33] D.R. Burton, L. Hangartner, Broadly neutralizing antibodies to HIV and their role in vaccine design, *Annu. Rev. Immunol.* 34 (2016) 635–659.
- [34] C.K. Wibmer, P.L. Moore, L. Morris, HIV broadly neutralizing antibody targets, *Curr. Opin. HIV AIDS* 10 (2015) 135–143.
- [35] S.W. de Taeye, J.P. Moore, R.W. Sanders, HIV-1 envelope trimer design and immunization strategies to induce broadly neutralizing antibodies, *Trends Immunol.* 37 (2016) 221–232.
- [36] P. Zhu, J. Liu, J. Bess Jr., E. Chertova, J.D. Lifson, H. Grise, et al., Distribution and three-dimensional structure of AIDS virus envelope spikes, *Nature.* 441 (2006) 847–852.
- [37] J.H. Lee, N. de Val, D. Lyumkis, A.B. Ward, Model building and refinement of a natively glycosylated HIV-1 Env protein by high-resolution cryoelectron microscopy, *Structure.* 23 (2015) 1943–1951.
- [38] A.J. Behrens, S. Vasiljevic, L.K. Pritchard, D.J. Harvey, R.S. Andev, S.A. Krumm, et al., Composition and antigenic effects of individual glycan sites of a trimeric HIV-1 envelope glycoprotein, *Cell Rep.* 14 (2016) 2695–2706.
- [39] B. Korber, B. Gaschen, K. Yusim, R. Thakallapally, C. Kesmir, V. Detours, Evolutionary and immunological implications of contemporary HIV-1 variation, *Br. Med. Bull.* 58 (2001) 19–42.
- [40] C. Havenar-Daughton, J.H. Lee, S. Crotty, Tfh cells and HIV bnAbs, an immunodominance model of the HIV neutralizing antibody generation problem, *Immunol. Rev.* 275 (2017) 49–61.
- [41] D.R. Burton, R. Ahmed, D.H. Barouch, S.T. Butera, S. Crotty, A. Godzik, et al., A blueprint for HIV vaccine discovery, *Cell Host Microbe* 12 (2012) 396–407.
- [42] A.J. McMichael, W.C. Koff, Vaccines that stimulate T cell immunity to HIV-1: the next step, *Nat. Immunol.* 15 (2014) 319–322.
- [43] R.W. Sanders, J.P. Moore, Native-like Env trimers as a platform for HIV-1 vaccine design, *Immunol. Rev.* 275 (2017) 161–182.
- [44] R. Rappuoli, M.J. Bottomley, U. D'Oro, O. Finco, E. De Gregorio, Reverse vaccinology 2.0: Human immunology instructs vaccine antigen design, *J. Exp. Med.* 213 (2016) 469–481.
- [45] M. Crispin, K.J. Doores, Targeting host-derived glycans on enveloped viruses for antibody-based vaccine design, *Curr. Opin. Virol.* 11 (2015) 63–69.
- [46] C.N. Scanlan, J. Offer, N. Zitzmann, R.A. Dwek, Exploiting the defensive sugars of HIV-1 for drug and vaccine design, *Nature.* 446 (2007) 1038–1045.
- [47] S.A. Plotkin, Immunologic correlates of protection induced by vaccination, *Pediatr. Infect. Dis. J.* 20 (2001) 63–75.
- [48] D.C. Chan, P.S. Kim, HIV entry and its inhibition, *Cell.* 93 (1998) 681–684.
- [49] M.F. Bachmann, U.H. Rohrer, T.M. Kundig, K. Burki, H. Hangartner, R.M. Zinkernagel, The influence of antigen organization on B cell responsiveness, *Science.* 262 (1993) 1448–1451.
- [50] P.W. Parren, M.C. Gauduin, R.A. Koup, P. Poignard, Q.J. Sattentau, P. Fiscaro, et al., Erratum to “Relevance of the antibody response against human immunodeficiency virus type 1 envelope to vaccine design”, *Immunol. Lett.* 58 (1997) 125–132.
- [51] P.W. Parren, D.R. Burton, Q.J. Sattentau, HIV-1 antibody—debris or virion? *Nat. Med.* 3 (1997) 366–367.

- [52] Q.J. Sattentau, J.P. Moore, Human immunodeficiency virus type 1 neutralization is determined by epitope exposure on the gp120 oligomer, *J. Exp. Med.* 182 (1995) 185–196.
- [53] P.L. Moore, E.T. Crooks, L. Porter, P. Zhu, C.S. Cayan, H. Grise, et al., Nature of nonfunctional envelope proteins on the surface of human immunodeficiency virus type 1, *J. Virol.* 80 (2006) 2515–2528.
- [54] R.W. Sanders, R. Derking, A. Cupo, J.P. Julien, A. Yasmeen, N. de Val, et al., A next-generation cleaved, soluble HIV-1 Env trimer, BG505 SOSIP.664 gp140, expresses multiple epitopes for broadly neutralizing but not non-neutralizing antibodies, *PLoS Pathog.* 9 (2013), e1003618.
- [55] M. Pancera, R. Wyatt, Selective recognition of oligomeric HIV-1 primary isolate envelope glycoproteins by potently neutralizing ligands requires efficient precursor cleavage, *Virology.* 332 (2005) 145–156.
- [56] G.D. Tomaras, N.L. Yates, P. Liu, L. Qin, G.G. Fouda, L.L. Chavez, et al., Initial B cell responses to transmitted human immunodeficiency virus type 1: virion-binding immunoglobulin M (IgM) and IgG antibodies followed by plasma anti-gp41 antibodies with ineffective control of initial viremia, *J. Virol.* 82 (2008) 12449–12463.
- [57] L.E. McCoy, A.F. Quigley, N.M. Strokappe, B. Bulmer-Thomas, M.S. Seaman, D. Mortier, et al., Potent and broad neutralization of HIV-1 by a llama antibody elicited by immunization, *J. Exp. Med.* 209 (2012) 1091–1103.
- [58] D. Sok, K.M. Le, M. Vadnais, K.L. Saye-Francisco, J.G. Jardine, J.L. Torres, et al., Rapid elicitation of broadly neutralizing antibodies to HIV by immunization in cows, *Nature.* 548 (2017) 108–111.
- [59] R. Rong, F. Bibollet-Ruche, J. Mulenga, S. Allen, J.L. Blackwell, C.A. Derdeyn, Role of V1V2 and other human immunodeficiency virus type 1 envelope domains in resistance to autologous neutralization during clade C infection, *J. Virol.* 81 (2007) 1350–1359.
- [60] D.D. Richman, T. Wrin, S.J. Little, C.J. Petropoulos, Rapid evolution of the neutralizing antibody response to HIV type 1 infection, *Proc. Natl. Acad. Sci. U. S. A.* 100 (2003) 4144–4149.
- [61] A.T. McGuire, J.A. Glenn, A. Lippy, L. Stamatatos, Diverse recombinant HIV-1 Envs fail to activate B cells expressing the germline B cell receptors of the broadly neutralizing anti-HIV-1 antibodies PG9 and 447-52D, *J. Virol.* 88 (2014) 2645–2657.
- [62] S. Hoot, A.T. McGuire, K.W. Cohen, R.K. Strong, L. Hangartner, F. Klein, et al., Recombinant HIV envelope proteins fail to engage germline versions of anti-CD4bs bNAbs, *PLoS Pathog.* 9 (2013), e1003106.
- [63] X. Xiao, W. Chen, Y. Feng, Z. Zhu, P. Prabhakaran, Y. Wang, et al., Germline-like predecessors of broadly neutralizing antibodies lack measurable binding to HIV-1 envelope glycoproteins: implications for evasion of immune responses and design of vaccine immunogens, *Biochem. Biophys. Res. Commun.* 390 (2009) 404–409.
- [64] K.J. Doores, M. Huber, K.M. Le, S.K. Wang, C. Doyle-Cooper, A. Cooper, et al., 2G12-expressing B cell lines may aid in HIV carbohydrate vaccine design strategies, *J. Virol.* 87 (2013) 2234–2241.
- [65] L.A. Lasky, J.E. Gropman, C.W. Fennie, P.M. Benz, D.J. Capon, D.J. Dowbenko, et al., Neutralization of the AIDS retrovirus by antibodies to a recombinant envelope glycoprotein, *Science.* 233 (1986) 209–212.
- [66] H. Wardemann, S. Yurasov, A. Schaefer, J.W. Young, E. Meffre, M.C. Nussenzweig, Predominant autoantibody production by early human B cell precursors, *Science.* 301 (2003) 1374–1377.
- [67] P.M. Rudd, R.A. Dwek, Glycosylation: heterogeneity and the 3D structure of proteins, *Crit. Rev. Biochem. Mol. Biol.* 32 (1997) 1–100.
- [68] M. Cohen, Notable aspects of glycan–protein interactions, *Biomolecules.* 5 (2015) 2056–2072.
- [69] R. Wyatt, P.D. Kwong, E. Desjardins, R.W. Sweet, J. Robinson, W.A. Hendrickson, et al., The antigenic structure of the HIV gp120 envelope glycoprotein, *Nature.* 393 (1998) 705–711.
- [70] P.L. Moore, E.S. Gray, C.K. Wibmer, J.N. Bhiman, M. Nonyane, D.J. Sheward, et al., Evolution of an HIV glycan-dependent broadly neutralizing antibody epitope through immune escape, *Nat. Med.* 18 (2012) 1688–1692.
- [71] X. Wei, J.M. Decker, S. Wang, H. Hui, J.C. Kappes, X. Wu, et al., Antibody neutralization and escape by HIV-1, *Nature.* 422 (2003) 307–312.
- [72] L. Dacheux, A. Moreau, Y. Ataman-Onal, F. Biron, B. Verrier, F. Barin, Evolutionary dynamics of the glycan shield of the human immunodeficiency virus envelope during natural infection and implications for exposure of the 2G12 epitope, *J. Virol.* 78 (2004) 12625–12637.
- [73] B. Chohan, D. Lang, M. Sagar, B. Korber, L. Lavreys, B. Richardson, et al., Selection for human immunodeficiency virus type 1 envelope glycosylation variants with shorter V1–V2 loop sequences occurs during transmission of certain genetic subtypes and may impact viral RNA levels, *J. Virol.* 79 (2005) 6528–6531.
- [74] C.A. Derdeyn, J.M. Decker, F. Bibollet-Ruche, J.L. Mokili, M. Muldoon, S.A. Denham, et al., Envelope-constrained neutralization-sensitive HIV-1 after heterosexual transmission, *Science.* 303 (2004) 2019–2022.
- [75] Y. Liu, M.E. Curlin, K. Diem, H. Zhao, A.K. Ghosh, H. Zhu, et al., Env length and N-linked glycosylation following transmission of human immunodeficiency virus type 1 subtype B viruses, *Virology.* 374 (2008) 229–233.
- [76] K. Wagh, E.F. Kreider, Y. Li, H.J. Barbian, G.H. Learn, E. Giorgi, et al., Completeness of HIV-1 envelope glycan shield at transmission determines neutralization breadth, *Cell Rep.* 25 (2018) 893–908 (e7).
- [77] R.A. McCaffrey, C. Saunders, M. Hensel, L. Stamatatos, N-linked glycosylation of the V3 loop and the immunologically silent face of gp120 protects human immunodeficiency virus type 1 SF162 from neutralization by anti-gp120 and anti-gp41 antibodies, *J. Virol.* 78 (2004) 3279–3295.
- [78] W. Wang, B. Zirkle, J. Nie, J. Ma, K. Gao, X.S. Chen, et al., N463 glycosylation site on V5 loop of a mutant gp120 regulates the sensitivity of HIV-1 to neutralizing monoclonal antibodies VRC01/03, *J. Acquir. Immune Defic. Syndr.* 69 (2015) 270–277.
- [79] M. Koch, M. Pancera, P.D. Kwong, P. Kolchinsky, C. Grundner, L. Wang, et al., Structure-based, targeted deglycosylation of HIV-1 gp120 and effects on neutralization sensitivity and antibody recognition, *Virology.* 313 (2003) 387–400.
- [80] Y. Li, B. Cleveland, I. Klots, B. Travis, B.A. Richardson, D. Anderson, et al., Removal of a single N-linked glycan in human immunodeficiency virus type 1 gp120 results in an enhanced ability to induce neutralizing antibody responses, *J. Virol.* 82 (2008) 638–651.
- [81] N.K. Back, L. Smit, J.J. De Jong, W. Keulen, M. Schutten, J. Goudsmit, et al., An N-glycan within the human immunodeficiency virus type 1 gp120 V3 loop affects virus neutralization, *Virology.* 199 (1994) 431–438.

- [82] M. Pancera, T. Zhou, A. Druz, I.S. Georgiev, C. Soto, J. Gorman, et al., Structure and immune recognition of trimeric pre-fusion HIV-1 Env, *Nature*. 514 (2014) 455–461.
- [83] Y. Liang, M. Guttman, J.A. Williams, H. Verkerke, D. Alvarado, S.L. Hu, et al., Changes in structure and antigenicity of HIV-1 Env trimers resulting from removal of a conserved CD4 binding site-proximal glycan, *J. Virol.* 90 (2016) 9224–9236.
- [84] M. Crispin, T.A. Bowden, Antibodies expose multiple weaknesses in the glycan shield of HIV, *Nat. Struct. Mol. Biol.* 20 (2013) 771–772.
- [85] N.M. Flynn, D.N. Forthal, C.D. Harro, F.N. Judson, K.H. Mayer, M.F. Para, et al., Placebo-controlled phase 3 trial of a recombinant glycoprotein 120 vaccine to prevent HIV-1 infection, *J. Infect. Dis.* 191 (2005) 654–665.
- [86] P.B. Gilbert, M.L. Peterson, D. Follmann, M.G. Hudgens, D. P. Francis, M. Gurwith, et al., Correlation between immunologic responses to a recombinant glycoprotein 120 vaccine and incidence of HIV-1 infection in a phase 3 HIV-1 preventive vaccine trial, *J. Infect. Dis.* 191 (2005) 666–677.
- [87] P. Pitisuttithum, P. Gilbert, M. Gurwith, W. Heyward, M. Martin, F. van Griensven, et al., Randomized, double-blind, placebo-controlled efficacy trial of a bivalent recombinant glycoprotein 120 HIV-1 vaccine among injection drug users in Bangkok, Thailand, *J. Infect. Dis.* 194 (2006) 1661–1671.
- [88] T.C. VanCott, F.R. Bethke, D.S. Burke, R.R. Redfield, D.L. Bix, Lack of induction of antibodies specific for conserved, discontinuous epitopes of HIV-1 envelope glycoprotein by candidate AIDS vaccines, *J. Immunol.* 155 (1995) 4100–4110.
- [89] X. Yang, L. Florin, M. Farzan, P. Kolchinsky, P.D. Kwong, J. Sodroski, et al., Modifications that stabilize human immunodeficiency virus envelope glycoprotein trimers in solution, *J. Virol.* 74 (2000) 4746–4754.
- [90] G. Frey, H. Peng, S. Rits-Volloch, M. Morelli, Y. Cheng, B. Chen, A fusion-intermediate state of HIV-1 gp41 targeted by broadly neutralizing antibodies, *Proc. Natl. Acad. Sci. U. S. A.* 105 (2008) 3739–3744.
- [91] R.P. Ringe, R.W. Sanders, A. Yasmeen, H.J. Kim, J.H. Lee, A. Cupo, et al., Cleavage strongly influences whether soluble HIV-1 envelope glycoprotein trimers adopt a native-like conformation, *Proc. Natl. Acad. Sci. U. S. A.* 110 (2013) 18256–18261.
- [92] R.P. Ringe, A. Yasmeen, G. Ozorowski, E.P. Go, L.K. Pritchard, M. Guttman, et al., Influences on the design and purification of soluble, recombinant native-like HIV-1 envelope glycoprotein trimers, *J. Virol.* 89 (2015) 12189–12210.
- [93] E.P. Go, A. Cupo, R. Ringe, P. Pugach, J.P. Moore, H. Desaire, Native conformation and canonical disulfide bond formation are interlinked properties of HIV-1 Env glycoproteins, *J. Virol.* 90 (2015) 2884–2894.
- [94] L.K. Pritchard, S. Vasiljevic, G. Ozorowski, G.E. Seabright, A. Cupo, R. Ringe, et al., Structural constraints determine the glycosylation of HIV-1 envelope trimers, *Cell Rep.* 11 (2015) 1604–1613.
- [95] A. Yasmeen, R. Ringe, R. Derking, A. Cupo, J.P. Julien, D. R. Burton, et al., Differential binding of neutralizing and non-neutralizing antibodies to native-like soluble HIV-1 Env trimers, uncleaved Env proteins, and monomeric subunits, *Retrovirology*. 11 (2014) 41.
- [96] D.J. Lewis, C.A. Fraser, A.N. Mahmoud, R.C. Wiggins, M. Woodrow, A. Cope, et al., Phase I randomised clinical trial of an HIV-1(CN54), clade C, trimeric envelope vaccine candidate delivered vaginally, *PLoS One* 6 (2011), e25165.
- [97] P. Spearman, M.A. Lally, M. Elizaga, D. Montefiori, G.D. Tomaras, M.J. McElrath, et al., A trimeric, V2-deleted HIV-1 envelope glycoprotein vaccine elicits potent neutralizing antibodies but limited breadth of neutralization in human volunteers, *J. Infect. Dis.* 203 (2011) 1165–1173.
- [98] C.A. Cosgrove, C.J. Lacey, A.V. Cope, A. Bartolf, G. Morris, C. Yan, et al., Comparative immunogenicity of HIV-1 gp140 vaccine delivered by parenteral, and mucosal routes in female volunteers; MUCOVAC2, a randomized two centre study, *PLoS One* 11 (2016), e0152038.
- [99] J.M. Binley, R.W. Sanders, B. Clas, N. Schuelke, A. Master, Y. Guo, et al., A recombinant human immunodeficiency virus type 1 envelope glycoprotein complex stabilized by an intermolecular disulfide bond between the gp120 and gp41 subunits is an antigenic mimic of the trimeric virion-associated structure, *J. Virol.* 74 (2000) 627–643.
- [100] R.W. Sanders, M. Vesanen, N. Schuelke, A. Master, L. Schiffner, R. Kalyanaraman, et al., Stabilization of the soluble, cleaved, trimeric form of the envelope glycoprotein complex of human immunodeficiency virus type 1, *J. Virol.* 76 (2002) 8875–8889.
- [101] R.W. Sanders, E. Busser, J.P. Moore, M. Lu, B. Berkhout, Evolutionary repair of HIV type 1 gp41 with a kink in the N-terminal helix leads to restoration of the six-helix bundle structure, *AIDS Res. Hum. Retrovir.* 20 (2004) 742–749.
- [102] P.J. Klasse, R.S. Depetris, R. Pejchal, J.P. Julien, R. Khayat, J.H. Lee, et al., Influences on trimerization and aggregation of soluble, cleaved HIV-1 SOSIP envelope glycoprotein, *J. Virol.* 87 (2013) 9873–9885.
- [103] A.B. Ward, I.A. Wilson, The HIV-1 envelope glycoprotein structure: nailing down a moving target, *Immunol. Rev.* 275 (2017) 21–32.
- [104] A. Torrents de la Pena, J.P. Julien, S.W. de Taeye, F. Garces, M. Guttman, G. Ozorowski, et al., Improving the immunogenicity of native-like HIV-1 envelope trimers by hyperstabilization, *Cell Rep.* 20 (2017) 1805–1817.
- [105] Y.D. Kwon, M. Pancera, P. Acharya, I.S. Georgiev, E.T. Crooks, J. Gorman, et al., Crystal structure, conformational fixation and entry-related interactions of mature ligand-free HIV-1 Env, *Nat. Struct. Mol. Biol.* 22 (2015) 522–531.
- [106] J. Guenaga, N. de Val, K. Tran, Y. Feng, K. Satchwell, A.B. Ward, et al., Well-ordered trimeric HIV-1 subtype B and C soluble spike mimetics generated by negative selection display native-like properties, *PLoS Pathog.* 11 (2015), e1004570.
- [107] S.W. de Taeye, G. Ozorowski, A. Torrents de la Pena, M. Guttman, J.P. Julien, T.L. van den Kerkhof, et al., Immunogenicity of stabilized HIV-1 envelope trimers with reduced exposure of non-neutralizing epitopes, *Cell* 163 (2015) 1702–1715.
- [108] J.P. Julien, J.H. Lee, G. Ozorowski, Y. Hua, A. Torrents de la Pena, S.W. de Taeye, et al., Design and structure of two HIV-1 clade C SOSIP.664 trimers that increase the arsenal of native-like Env immunogens, *Proc. Natl. Acad. Sci. U. S. A.* 112 (2015) 11947–11952.
- [109] P. Pugach, G. Ozorowski, A. Cupo, R. Ringe, A. Yasmeen, N. de Val, et al., A native-like SOSIP.664 trimer based on an HIV-1 subtype B env gene, *J. Virol.* 89 (2015) 3380–3395.
- [110] M.G. Joyce, I.S. Georgiev, Y. Yang, A. Druz, H. Geng, G.Y. Chuang, et al., Soluble prefusion closed DS-SOSIP.664-Env trimers of diverse HIV-1 strains, *Cell Rep.* 21 (2017) 2992–3002.
- [111] L. Rutten, Y.T. Lai, S. Blokland, D. Truan, I.J.M. Bisschop, N.M. Strokappe, et al., A universal approach to optimize the

- folding and stability of prefusion-closed HIV-1 envelope trimers, *Cell Rep.* 23 (2018) 584–595.
- [112] S. Ahmed, T. Shrivastava, N. Kumar, G. Ozorowski, A.B. Ward, B.K. Chakrabarti, Stabilization of a soluble, native-like trimeric form of an efficiently cleaved Indian HIV-1 clade C envelope glycoprotein, *J. Biol. Chem.* 292 (2017) 8236–8243.
- [113] S.K. Sharma, N. de Val, S. Bale, J. Guenaga, K. Tran, Y. Feng, et al., Cleavage-independent HIV-1 Env trimers engineered as soluble native spike mimetics for vaccine design, *Cell Rep.* 11 (2015) 539–550.
- [114] I.S. Georgiev, M.G. Joyce, Y. Yang, M. Sastry, B. Zhang, U. Baxa, et al., Single-chain soluble BG505.SOSIP gp140 trimers as structural and antigenic mimics of mature closed HIV-1 Env, *J. Virol.* 89 (2015) 5318–5329.
- [115] L. Kong, L. He, N. de Val, N. Vora, C.D. Morris, P. Azadnia, et al., Uncleaved prefusion-optimized gp140 trimers derived from analysis of HIV-1 envelope metastability, *Nat. Commun.* 7 (2016) 12040.
- [116] R.W. Sanders, M.J. van Gils, R. Derking, D. Sok, T.J. Ketas, J.A. Burger, et al., HIV-1 vaccines. HIV-1 neutralizing antibodies induced by native-like envelope trimers, *Science* 349 (2015), aac4223.
- [117] Y. Feng, K. Tran, S. Bale, S. Kumar, J. Guenaga, R. Wilson, et al., Thermostability of well-ordered HIV spikes correlates with the elicitation of autologous tier 2 neutralizing antibodies, *PLoS Pathog.* 12 (2016), e1005767.
- [118] A. Torrents de la Pena, S.W. de Taeye, K. Slieden, C.C. LaBranche, J.A. Burger, E.E. Schermer, et al., Immunogenicity in rabbits of HIV-1 SOSIP trimers from clades A, B, and C, given individually, sequentially, or in combination, *J. Virol.* (2018) 92.
- [119] P.J. Klasse, C.C. LaBranche, T.J. Ketas, G. Ozorowski, A. Cupo, P. Pugach, et al., Sequential and simultaneous immunization of rabbits with HIV-1 envelope glycoprotein SOSIP.664 trimers from clades A, B and C, *PLoS Pathog.* 12 (2016), e1005864.
- [120] C. Cheng, M. Pancera, A. Bossert, S.D. Schmidt, R.E. Chen, X. Chen, et al., Immunogenicity of a prefusion HIV-1 envelope trimer in complex with a quaternary-structure-specific antibody, *J. Virol.* 90 (2015) 2740–2755.
- [121] Y. Aldon, P.F. McKay, J. Allen, G. Ozorowski, R. Felfodine Levai, M. Tolazzi, et al., Rational design of DNA-expressed stabilized native-like HIV-1 envelope trimers, *Cell Rep.* 24 (2018) 3324–3338 (e5).
- [122] M. Crispin, A.B. Ward, I.A. Wilson, Structure and immune recognition of the HIV glycan shield, *Annu. Rev. Biophys.* 47 (1) (2018) 499–523.
- [123] T. Zhou, A. Zheng, U. Baxa, G.Y. Chuang, I.S. Georgiev, R. Kong, et al., A neutralizing antibody recognizing primarily N-linked glycan targets the silent face of the HIV envelope, *Immunity.* 48 (2018) 500–513 (e6).
- [124] D.A. Calarese, H.K. Lee, C.Y. Huang, M.D. Best, R.D. Astronomo, R.L. Stanfield, et al., Dissection of the carbohydrate specificity of the broadly neutralizing anti-HIV-1 antibody 2G12, *Proc. Natl. Acad. Sci. U. S. A.* 102 (2005) 13372–13377.
- [125] A. Trkola, M. Purtscher, T. Muster, C. Ballaun, A. Buchacher, N. Sullivan, et al., Human monoclonal antibody 2G12 defines a distinctive neutralization epitope on the gp120 glycoprotein of human immunodeficiency virus type 1, *J. Virol.* 70 (1996) 1100–1108.
- [126] C.D. Murin, J.P. Julien, D. Sok, R.L. Stanfield, R. Khayat, A. Cupo, et al., Structure of 2G12 Fab2 in complex with soluble and fully glycosylated HIV-1 Env by negative-stain single-particle electron microscopy, *J. Virol.* 88 (2014) 10177–10188.
- [127] D.A. Calarese, C.N. Scanlan, M.B. Zwick, S. Deechongkit, Y. Mimura, R. Kunert, et al., Antibody domain exchange is an immunological solution to carbohydrate cluster recognition, *Science.* 300 (2003) 2065–2071.
- [128] R.W. Sanders, M. Venturi, L. Schiffner, R. Kalyanaraman, H. Katinger, K.O. Lloyd, et al., The mannose-dependent epitope for neutralizing antibody 2G12 on human immunodeficiency virus type 1 glycoprotein gp120, *J. Virol.* 76 (2002) 7293–7305.
- [129] C.N. Scanlan, R. Pantophlet, M.R. Wormald, E.O. Saphire, D. Calarese, R. Stanfield, et al., The carbohydrate epitope of the neutralizing anti-HIV-1 antibody 2G12, *Adv. Exp. Med. Biol.* 535 (2003) 205–218.
- [130] C.N. Scanlan, R. Pantophlet, M.R. Wormald, E. Ollmann Saphire, R. Stanfield, I.A. Wilson, et al., The broadly neutralizing anti-human immunodeficiency virus type 1 antibody 2G12 recognizes a cluster of alpha1→2 mannose residues on the outer face of gp120, *J. Virol.* 76 (2002) 7306–7321.
- [131] T. Zhou, I. Georgiev, X. Wu, Z.Y. Yang, K. Dai, A. Finzi, et al., Structural basis for broad and potent neutralization of HIV-1 by antibody VRC01, *Science.* 329 (2010) 811–817.
- [132] H.X. Liao, R. Lynch, T. Zhou, F. Gao, S.M. Alam, S.D. Boyd, et al., Co-evolution of a broadly neutralizing HIV-1 antibody and founder virus, *Nature.* 496 (2013) 469–476.
- [133] N.A. Doria-Rose, C.A. Schramm, J. Gorman, P.L. Moore, J.N. Bhiman, B.J. DeKosky, et al., Developmental pathway for potent V1V2-directed HIV-neutralizing antibodies, *Nature.* 509 (2014) 55–62.
- [134] J.H. Lee, R. Andrabi, C.Y. Su, A. Yasmeen, J.P. Julien, L. Kong, et al., A broadly neutralizing antibody targets the dynamic HIV envelope trimer apex via a long, rigidified, and anionic beta-hairpin structure, *Immunity.* 46 (2017) 690–702.
- [135] R. Pejchal, L.M. Walker, R.L. Stanfield, S.K. Phogat, W.C. Koff, P. Poignard, et al., Structure and function of broadly reactive antibody PG16 reveal an H3 subdomain that mediates potent neutralization of HIV-1, *Proc. Natl. Acad. Sci. U. S. A.* 107 (2010) 11483–11488.
- [136] R. Pejchal, K.J. Doores, L.M. Walker, R. Khayat, P.S. Huang, S.K. Wang, et al., A potent and broad neutralizing antibody recognizes and penetrates the HIV glycan shield, *Science.* 334 (2011) 1097–1103.
- [137] L. Kong, J.H. Lee, K.J. Doores, C.D. Murin, J.P. Julien, R. McBride, et al., Supersite of immune vulnerability on the glycosylated face of HIV-1 envelope glycoprotein gp120, *Nat. Struct. Mol. Biol.* 20 (2013) 796–803.
- [138] J.P. Julien, D. Sok, R. Khayat, J.H. Lee, K.J. Doores, L.M. Walker, et al., Broadly neutralizing antibody PGT121 allosterically modulates CD4 binding via recognition of the HIV-1 gp120 V3 base and multiple surrounding glycans, *PLoS Pathog.* 9 (2013), e1003342.
- [139] A. Irimia, A. Sarkar, R.L. Stanfield, I.A. Wilson, Crystallographic identification of lipid as an integral component of the epitope of HIV broadly neutralizing antibody 4E10, *Immunity.* 44 (2016) 21–31.
- [140] M. Zemlin, M. Klinger, J. Link, C. Zemlin, K. Bauer, J.A. Engler, et al., Expressed murine and human CDR-H3 intervals of equal length exhibit distinct repertoires that differ in their amino acid composition and predicted range of structures, *J. Mol. Biol.* 334 (2003) 733–749.
- [141] F. Klein, R. Diskin, J.F. Scheid, C. Gaebler, H. Mouquet, I.S. Georgiev, et al., Somatic mutations of the immunoglobulin

- framework are generally required for broad and potent HIV-1 neutralization, *Cell*. 153 (2013) 126–138.
- [142] D. Sok, U. Laserson, J. Laserson, Y. Liu, F. Vigneault, J.P. Julien, et al., The effects of somatic hypermutation on neutralization and binding in the PGT121 family of broadly neutralizing HIV antibodies, *PLoS Pathog.* 9 (2013), e1003754.
- [143] I.S. Georgiev, R.S. Rudicell, K.O. Saunders, W. Shi, T. Kirys, K. McKee, et al., Antibodies VRC01 and 10E8 neutralize HIV-1 with high breadth and potency even with Ig-framework regions substantially reverted to germline, *J. Immunol.* 192 (2014) 1100–1106.
- [144] B.F. Haynes, J. Fleming, E.W. St Clair, H. Katinger, G. Stiegler, R. Kunert, et al., Cardiophilic polyspecific autoreactivity in two broadly neutralizing HIV-1 antibodies, *Science*. 308 (2005) 1906–1908.
- [145] M. Liu, G. Yang, K. Wiehe, N.I. Nicely, N.A. Vandergrift, W. Rountree, et al., Polyreactivity and autoreactivity among HIV-1 antibodies, *J. Virol.* 89 (2015) 784–798.
- [146] D.C. Dunlop, A. Ulrich, B.J. Appelmelk, D.R. Burton, R.A. Dwek, N. Zitzmann, et al., Antigenic mimicry of the HIV envelope by AIDS-associated pathogens, *AIDS*. 22 (2008) 2214–2217.
- [147] B.F. Haynes, M.A. Moody, L. Verkoczy, G. Kelsoe, S.M. Alam, Antibody polyspecificity and neutralization of HIV-1: a hypothesis, *Hum. Antibodies* 14 (2005) 59–67.
- [148] T. Komagamine, N. Yuki, Ganglioside mimicry as a cause of Guillain–Barre syndrome, *CNS Neurol. Disord. Drug Targets* 5 (2006) 391–400.
- [149] G.B. Stewart-Jones, C. Soto, T. Lemmin, G.Y. Chuang, A. Druz, R. Kong, et al., Trimeric HIV-1-Env structures define glycan shields from clades A, B, and G, *Cell*. 165 (2016) 813–826.
- [150] L. Kong, N.C. Sheppard, G.B. Stewart-Jones, C.L. Robson, H. Chen, X. Xu, et al., Expression-system-dependent modulation of HIV-1 envelope glycoprotein antigenicity and immunogenicity, *J. Mol. Biol.* 403 (2010) 131–147.
- [151] T. Mizuuchi, M.W. Spellman, M. Larkin, J. Solomon, L.J. Basa, T. Feizi, Carbohydrate structures of the human-immunodeficiency-virus (HIV) recombinant envelope glycoprotein gp120 produced in Chinese-hamster ovary cells, *Biochem. J.* 254 (1988) 599–603.
- [152] C.K. Leonard, M.W. Spellman, L. Riddle, R.J. Harris, J.N. Thomas, T.J. Gregory, Assignment of intrachain disulfide bonds and characterization of potential glycosylation sites of the type 1 recombinant human immunodeficiency virus envelope glycoprotein (gp120) expressed in Chinese hamster ovary cells, *J. Biol. Chem.* 265 (1990) 10373–10382.
- [153] X. Zhu, C. Borchers, R.J. Bienstock, K.B. Tomer, Mass spectrometric characterization of the glycosylation pattern of HIV-gp120 expressed in CHO cells, *Biochemistry*. 39 (2000) 11194–11204.
- [154] J.M. Cutalo, L.J. Deterding, K.B. Tomer, Characterization of glycopeptides from HIV-1(SF2) gp120 by liquid chromatography mass spectrometry, *J. Am. Soc. Mass Spectrom.* 15 (2004) 1545–1555.
- [155] E.P. Go, H.X. Liao, S.M. Alam, D. Hua, B.F. Haynes, H. Desaire, Characterization of host-cell line specific glycosylation profiles of early transmitted/founder HIV-1 gp120 envelope proteins, *J. Proteome Res.* 12 (2013) 1223–1234.
- [156] L.K. Pritchard, D.I. Spencer, L. Royle, C. Bonomelli, G.E. Seabright, A.J. Behrens, et al., Glycan clustering stabilizes the mannose patch of HIV-1 and preserves vulnerability to broadly neutralizing antibodies, *Nat. Commun.* 6 (2015) 7479.
- [157] K.P. Coss, S. Vasiljevic, L.K. Pritchard, S.A. Krumm, M. Glaze, S. Madzorera, et al., HIV-1 glycan density drives the persistence of the mannose patch within an infected individual, *J. Virol.* 90 (2016) 11132–11144.
- [158] C. Bonomelli, K.J. Doores, D.C. Dunlop, V. Thaney, R.A. Dwek, D.R. Burton, et al., The glycan shield of HIV is predominantly oligomannose independently of production system or viral clade, *PLoS One* 6 (2011), e23521.
- [159] K.J. Doores, C. Bonomelli, D.J. Harvey, S. Vasiljevic, R.A. Dwek, D.R. Burton, et al., Envelope glycans of immunodeficiency virions are almost entirely oligomannose antigens, *Proc. Natl. Acad. Sci. U. S. A.* 107 (2010) 13800–13805.
- [160] H. Geyer, C. Holschbach, G. Hunsmann, J. Schneider, Carbohydrates of human immunodeficiency virus. Structures of oligosaccharides linked to the envelope glycoprotein 120, *J. Biol. Chem.* 263 (1988) 11760–11767.
- [161] E.P. Go, A. Herschhorn, C. Gu, L. Castillo-Mendez, S. Zhang, Y. Mao, et al., Comparative analysis of the glycosylation profiles of membrane-anchored HIV-1 envelope glycoprotein trimers and soluble gp140, *J. Virol.* 89 (2015) 8245–8257.
- [162] E.P. Go, H. Ding, S. Zhang, R.P. Ringe, N. Nicely, D. Hua, et al., Glycosylation benchmark profile for HIV-1 envelope glycoprotein production based on eleven Env trimers, *J. Virol.* 91 (2017).
- [163] L. Cao, J.K. Diedrich, D.W. Kulp, M. Pauthner, L. He, S.R. Park, et al., Global site-specific *N*-glycosylation analysis of HIV envelope glycoprotein, *Nat. Commun.* 8 (2017) 14954.
- [164] M. Pabst, M. Chang, J. Stadlmann, F. Altmann, Glycan profiles of the 27 *N*-glycosylation sites of the HIV envelope protein CN54gp140, *Biol. Chem.* 393 (2012) 719–730.
- [165] E.P. Go, G. Hewawasam, H.X. Liao, H. Chen, L.H. Ping, J.A. Anderson, et al., Characterization of glycosylation profiles of HIV-1 transmitted/founder envelopes by mass spectrometry, *J. Virol.* 85 (2011) 8270–8284.
- [166] E.P. Go, Q. Chang, H.X. Liao, L.L. Sutherland, S.M. Alam, B.F. Haynes, et al., Glycosylation site-specific analysis of clade C HIV-1 envelope proteins, *J. Proteome Res.* 8 (2009) 4231–4242.
- [167] E.P. Go, J. Irungu, Y. Zhang, D.S. Dalpathado, H.X. Liao, L. Sutherland, et al., Glycosylation site-specific analysis of HIV envelope proteins (JR-FL and CON-S) reveals major differences in glycosylation site occupancy, glycoform profiles, and antigenic epitopes' accessibility, *J. Proteome Res.* 7 (2008) 1660–1674.
- [168] A.J. Behrens, D.J. Harvey, E. Milne, A. Cupo, A. Kumar, N. Zitzmann, et al., Molecular architecture of the cleavage-dependent mannose patch on a soluble HIV-1 envelope glycoprotein trimer, *J. Virol.* 91 (2017).
- [169] A. Sarkar, S. Bale, A.J. Behrens, S. Kumar, S.K. Sharma, N. de Val, et al., Structure of a cleavage-independent HIV Env recapitulates the glycoprotein architecture of the native cleaved trimer, *Nat. Commun.* 9 (2018) 1956.
- [170] T.Q. Zhou, N.A. Doria-Rose, C. Cheng, G.B.E. Stewart-Jones, G.Y. Chuang, M. Chambers, et al., Quantification of the impact of the HIV-1–glycan shield on antibody elicitation, *Cell Rep.* 19 (2017) 719–732.
- [171] A.J. Behrens, M. Crispin, Structural principles controlling HIV envelope glycosylation, *Curr. Opin. Struct. Biol.* 44 (2017) 125–133.
- [172] A.K. Dey, A. Cupo, G. Ozorowski, V.K. Sharma, A.J. Behrens, E.P. Go, et al., cGMP production and analysis of

- BG505 SOSIP.664, an extensively glycosylated, trimeric HIV-1 envelope glycoprotein vaccine candidate, *Biotechnol. Bioeng.* 115 (2018) 885–899.
- [173] W.B. Struwe, E. Chertova, J.D. Allen, G.E. Seabright, Y. Watanabe, D.J. Harvey, et al., Site-specific glycosylation of virion-derived HIV-1 Env is mimicked by a soluble trimeric immunogen, *Cell Rep.* 24 (2018) 1958–1966 (e5).
- [174] L. Cao, M. Pauthner, R. Andrabi, K. Rantalainen, Z. Berndsen, J.K. Diedrich, et al., Differential processing of HIV envelope glycans on the virus and soluble recombinant trimer, *Nat. Commun.* 9 (2018) 3693.
- [175] J. Yolitz, C. Schwing, J. Chang, D. Van Ryk, F. Nawaz, D. Wei, et al., Signal peptide of HIV envelope protein impacts glycosylation and antigenicity of gp120, *Proc. Natl. Acad. Sci. U. S. A.* 115 (2018) 2443–2448.
- [176] L.K. Pritchard, D.I. Spencer, L. Royle, S. Vasiljevic, S.A. Krumm, K.J. Doores, et al., Glycan microheterogeneity at the PGT135 antibody recognition site on HIV-1 gp120 reveals a molecular mechanism for neutralization resistance, *J. Virol.* 89 (2015) 6952–6959.
- [177] L.E. McCoy, E. Falkowska, K.J. Doores, K. Le, D. Sok, M.J. van Gils, et al., Incomplete neutralization and deviation from sigmoidal neutralization curves for HIV broadly neutralizing monoclonal antibodies, *PLoS Pathog.* 11 (2015), e1005110.
- [178] M. Panico, L. Bouche, D. Binet, M.J. O'Connor, D. Rahman, P.C. Pang, et al., Mapping the complete glycoproteome of virion-derived HIV-1 gp120 provides insights into broadly neutralizing antibody binding, *Sci. Rep.* 6 (2016) 32956.
- [179] A.J. Behrens, A. Kumar, M. Medina-Ramirez, A. Cupo, K. Marshall, V.M. Cruz Portillo, et al., Integrity of glycosylation processing of a glycan-depleted trimeric HIV-1 immunogen targeting key B cell lineages, *J. Proteome Res.* 17 (2018) 987–999.
- [180] Y. Watanabe, J. Raghvani, J.D. Allen, G.E. Seabright, S. Li, F. Moser, et al., Structure of the Lassa virus glycan shield provides a model for immunological resistance, *Proc. Natl. Acad. Sci. U. S. A.* 115 (2018) 7320–7325.
- [181] A.J. Behrens, W.B. Struwe, M. Crispin, Glycosylation profiling to evaluate glycoprotein immunogens against HIV-1, *Expert Rev. Proteomics* 14 (2017) 881–890.
- [182] R.L. Willey, R. Shibata, E.O. Freed, M.W. Cho, M.A. Martin, Differential glycosylation, virion incorporation, and sensitivity to neutralizing antibodies of human immunodeficiency virus type 1 envelope produced from infected primary T-lymphocyte and macrophage cultures, *J. Virol.* 70 (1996) 6431–6436.
- [183] L.K. Pritchard, D.J. Harvey, C. Bonomelli, M. Crispin, K.J. Doores, Cell- and protein-directed glycosylation of native cleaved HIV-1 envelope, *J. Virol.* 89 (2015) 8932–8944.
- [184] R.L. Schnaar, Glycobiology simplified: diverse roles of glycan recognition in inflammation, *J. Leukoc. Biol.* 99 (2016) 825–838.
- [185] H. Mouquet, L. Scharf, Z. Euler, Y. Liu, C. Eden, J.F. Scheid, et al., Complex-type *N*-glycan recognition by potent broadly neutralizing HIV antibodies, *Proc. Natl. Acad. Sci. U. S. A.* 109 (2012) E3268–E3277.
- [186] E. Falkowska, K.M. Le, A. Ramos, K.J. Doores, J.H. Lee, C. Blattner, et al., Broadly neutralizing HIV antibodies define a glycan-dependent epitope on the prefusion conformation of gp41 on cleaved envelope trimers, *Immunity.* 40 (2014) 657–668.
- [187] M. Pancera, S. Shahzad-UI-Hussan, N.A. Doria-Rose, J.S. McLellan, R.T. Bailer, K. Dai, et al., Structural basis for diverse *N*-glycan recognition by HIV-1-neutralizing V1–V2-directed antibody PG16, *Nat. Struct. Mol. Biol.* 20 (2013) 804–813.
- [188] V.S. Shivatare, S.S. Shivatare, C.D. Lee, C.H. Liang, K.S. Liao, Y.Y. Cheng, et al., Unprecedented role of hybrid *N*-glycans as ligands for HIV-1 broadly neutralizing antibodies, *J. Am. Chem. Soc.* 140 (2018) 5202–5210.
- [189] R. Andrabi, C.Y. Su, C.H. Liang, S.S. Shivatare, B. Briney, J.E. Voss, et al., Glycans function as anchors for antibodies and help drive HIV broadly neutralizing antibody development, *Immunity.* 47 (2017) 1004.
- [190] Z. Zou, A. Chastain, S. Moir, J. Ford, K. Trandem, E. Martinelli, et al., Siglecs facilitate HIV-1 infection of macrophages through adhesion with viral sialic acids, *PLoS One* 6 (2011), e24559.
- [191] K. Rantalainen, Z.T. Berndsen, S. Murrell, L. Cao, O. Omorodion, J.L. Torres, et al., Co-evolution of HIV envelope and apex-targeting neutralizing antibody lineage provides benchmarks for vaccine design, *Cell Rep.* 23 (2018) 3249–3261.
- [192] S.F. Wheeler, P.M. Rudd, S.J. Davis, R.A. Dwek, D.J. Harvey, Comparison of the N-linked glycans from soluble and GPI-anchored CD59 expressed in CHO cells, *Glycobiology.* 12 (2002) 261–271.
- [193] Y. Li, L. Luo, D.Y. Thomas, C.Y. Kang, Control of expression, glycosylation, and secretion of HIV-1 gp120 by homologous and heterologous signal sequences, *Virology.* 204 (1994) 266–278.
- [194] Y. Li, J.J. Bergeron, L. Luo, W.J. Ou, D.Y. Thomas, C.Y. Kang, Effects of inefficient cleavage of the signal sequence of HIV-1 gp 120 on its association with calnexin, folding, and intracellular transport, *Proc. Natl. Acad. Sci. U. S. A.* 93 (1996) 9606–9611.
- [195] Y. Li, L. Luo, D.Y. Thomas, C.Y. Kang, The HIV-1 Env protein signal sequence retards its cleavage and down-regulates the glycoprotein folding, *Virology.* 272 (2000) 417–428.
- [196] A. Land, D. Zonneveld, I. Braakman, Folding of HIV-1 envelope glycoprotein involves extensive isomerization of disulfide bonds and conformation-dependent leader peptide cleavage, *FASEB J.* 17 (2003) 1058–1067.
- [197] E.L. Snapp, N. McCaul, M. Quandte, Z. Cabartova, I. Bontjer, C. Kallgren, et al., Structure and topology around the cleavage site regulate post-translational cleavage of the HIV-1 gp160 signal peptide, *Elife.* 6 (2017).
- [198] M. Asmal, I. Hellmann, W. Liu, B.F. Keele, A.S. Perelson, T. Bhattacharya, et al., A signature in HIV-1 envelope leader peptide associated with transition from acute to chronic infection impacts envelope processing and infectivity, *PLoS One* 6 (2011), e23673.
- [199] M. Guttman, N.K. Garcia, A. Cupo, T. Matsui, J.P. Julien, R. W. Sanders, et al., CD4-induced activation in a soluble HIV-1 Env trimer, *Structure.* 22 (2014) 974–984.
- [200] D. Sok, K.J. Doores, B. Briney, K.M. Le, K.L. Saye-Francisco, A. Ramos, et al., Promiscuous glycan site recognition by antibodies to the high-mannose patch of gp120 broadens neutralization of HIV, *Sci. Transl. Med.* 6 (2014), 236ra63.
- [201] L.M. Walker, M. Huber, K.J. Doores, E. Falkowska, R. Pejchal, J.P. Julien, et al., Broad neutralization coverage of HIV by multiple highly potent antibodies, *Nature.* 477 (2011) 466–470.
- [202] J.P. Julien, A. Cupo, D. Sok, R.L. Stanfield, D. Lyumkis, M. C. Deller, et al., Crystal structure of a soluble cleaved HIV-1 envelope trimer, *Science.* 342 (2013) 1477–1483.

- [203] C.O. Barnes, H.B. Gristick, N.T. Freund, A. Escolano, A.Y. Lyubimov, H. Hartweiger, et al., Structural characterization of a highly-potent V3-glycan broadly neutralizing antibody bound to natively-glycosylated HIV-1 envelope, *Nat. Commun.* 9 (2018) 1251.
- [204] H.B. Gristick, L. von Boehmer, A.P. West Jr., M. Chamber, A. Gazumyan, J. Golijanin, et al., Natively glycosylated HIV-1 Env structure reveals new mode for antibody recognition of the CD4-binding site, *Nat. Struct. Mol. Biol.* 23 (2016) 906–915.
- [205] M. Bonsignori, K.K. Hwang, X. Chen, C.Y. Tsao, L. Morris, E. Gray, et al., Analysis of a clonal lineage of HIV-1 envelope V2/V3 conformational epitope-specific broadly neutralizing antibodies and their inferred unmutated common ancestors, *J. Virol.* 85 (2011) 9998–10009.
- [206] D. Sok, M.J. van Gils, M. Pauthner, J.P. Julien, K.L. Saye-Francisco, J. Hsueh, et al., Recombinant HIV envelope trimer selects for quaternary-dependent antibodies targeting the trimer apex, *Proc. Natl. Acad. Sci. U. S. A.* 111 (2014) 17624–17629.
- [207] E.M. Cale, J. Gorman, N.A. Radakovich, E.T. Crooks, K. Osawa, T. Tong, et al., Virus-like particles identify an HIV V1V2 apex-binding neutralizing antibody that lacks a protruding loop, *Immunity.* 46 (2017) 777–791 (e10).
- [208] M.N. Amin, J.S. McLellan, W. Huang, J. Orwenyo, D.R. Burton, W.C. Koff, et al., Synthetic glycopeptides reveal the glycan specificity of HIV-neutralizing antibodies, *Nat. Chem. Biol.* 9 (2013) 521–526.
- [209] L.M. Walker, S.K. Phogat, P.Y. Chan-Hui, D. Wagner, P. Phung, J.L. Goss, et al., Broad and potent neutralizing antibodies from an African donor reveal a new HIV-1 vaccine target, *Science.* 326 (2009) 285–289.
- [210] J.S. McLellan, M. Pancera, C. Carrico, J. Gorman, J.P. Julien, R. Khayat, et al., Structure of HIV-1 gp120 V1/V2 domain with broadly neutralizing antibody PG9, *Nature.* 480 (2011) 336–343.
- [211] K.J. Doores, D.R. Burton, Variable loop glycan dependency of the broad and potent HIV-1-neutralizing antibodies PG9 and PG16, *J. Virol.* 84 (2010) 10510–10521.
- [212] E. Landais, B. Murrell, B. Briney, S. Murrell, K. Rantalainen, Z.T. Berndsen, et al., HIV envelope glycoform heterogeneity and localized diversity govern the initiation and maturation of a V2 apex broadly neutralizing antibody lineage, *Immunity.* 47 (2017) 990–1003 (e9).
- [213] D. Lyumkis, J.P. Julien, N. de Val, A. Cupo, C.S. Potter, P.J. Klasse, et al., Cryo-EM structure of a fully glycosylated soluble cleaved HIV-1 envelope trimer, *Science.* 342 (2013) 1484–1490.
- [214] E. Falkowska, A. Ramos, Y. Feng, T. Zhou, S. Moquin, L.M. Walker, et al., PGV04, an HIV-1 gp120 CD4 binding site antibody, is broad and potent in neutralization but does not induce conformational changes characteristic of CD4, *J. Virol.* 86 (2012) 4394–4403.
- [215] S.S. Balla-Jhaghoorsingh, D. Corti, L. Heyndrickx, E. Willems, K. Vereecken, D. Davis, et al., The N276 glycosylation site is required for HIV-1 neutralization by the CD4 binding site specific HJ16 monoclonal antibody, *PLoS One* 8 (2013), e68863.
- [216] C.K. Wibmer, J. Gorman, C.S. Anthony, N.N. Mkhize, A. Druz, T. York, et al., Structure of an N276-dependent HIV-1 neutralizing antibody targeting a rare V5 glycan hole adjacent to the CD4 binding site, *J. Virol.* 90 (2016) 10220–10235.
- [217] T. Zhou, R.M. Lynch, L. Chen, P. Acharya, X. Wu, N.A. Doria-Rose, et al., Structural repertoire of HIV-1-neutralizing antibodies targeting the CD4 supersite in 14 donors, *Cell.* 161 (2015) 1280–1292.
- [218] N.T. Freund, J.A. Horwitz, L. Nogueira, S.A. Sievers, L. Scharf, J.F. Scheid, et al., A new glycan-dependent CD4-binding site neutralizing antibody exerts pressure on HIV-1 in vivo, *PLoS Pathog.* 11 (2015), e1005238.
- [219] L. Scharf, J.F. Scheid, J.H. Lee, A.P. West Jr., C. Chen, H. Gao, et al., Antibody 8ANC195 reveals a site of broad vulnerability on the HIV-1 envelope spike, *Cell Rep.* 7 (2014) 785–795.
- [220] L. Kong, A. Torrents de la Pena, M.C. Deller, F. Garces, K. Sliепен, Y. Hua, et al., Complete epitopes for vaccine design derived from a crystal structure of the broadly neutralizing antibodies PGT128 and 8ANC195 in complex with an HIV-1 Env trimer, *Acta Crystallogr. D Biol. Crystallogr.* 71 (2015) 2099–2108.
- [221] C. Blattner, J.H. Lee, K. Sliепен, R. Derking, E. Falkowska, A.T. de la Pena, et al., Structural delineation of a quaternary, cleavage-dependent epitope at the gp41-gp120 interface on intact HIV-1 Env trimers, *Immunity.* 40 (2014) 669–680.
- [222] R. Andrabi, J.E. Voss, C.H. Liang, B. Briney, L.E. McCoy, C. Y. Wu, et al., Identification of common features in prototype broadly neutralizing antibodies to HIV envelope V2 apex to facilitate vaccine design, *Immunity.* 43 (2015) 959–973.
- [223] R. Kong, K. Xu, T. Zhou, P. Acharya, T. Lemmin, K. Liu, et al., Fusion peptide of HIV-1 as a site of vulnerability to neutralizing antibody, *Science.* 352 (2016) 828–833.
- [224] M.J. van Gils, T.L. van den Kerkhof, G. Ozorowski, C.A. Cottrell, D. Sok, M. Pauthner, et al., An HIV-1 antibody from an elite neutralizer implicates the fusion peptide as a site of vulnerability, *Nat. Microbiol.* 2 (2016) 16199.
- [225] J. Huang, B.H. Kang, M. Pancera, J.H. Lee, T. Tong, Y. Feng, et al., Broad and potent HIV-1 neutralization by a human antibody that binds the gp41–gp120 interface, *Nature.* 515 (2014) 138–142.
- [226] L.X. Wang, Synthetic carbohydrate antigens for HIV vaccine design, *Curr. Opin. Chem. Biol.* 17 (2013) 997–1005.
- [227] K.J. Doores, Z. Fulton, M. Huber, I.A. Wilson, D.R. Burton, Antibody 2G12 recognizes di-mannose equivalently in domain- and nondomain-exchanged forms but only binds the HIV-1 glycan shield if domain exchanged, *J. Virol.* 84 (2010) 10690–10699.
- [228] B. Aussedat, Y. Vohra, P.K. Park, A. Fernandez-Tejada, S.M. Alam, S.M. Dennison, et al., Chemical synthesis of highly congested gp120 V1V2 N-glycopeptide antigens for potential HIV-1-directed vaccines, *J. Am. Chem. Soc.* 135 (2013) 13113–13120.
- [229] S.M. Alam, S.M. Dennison, B. Aussedat, Y. Vohra, P.K. Park, A. Fernandez-Tejada, et al., Recognition of synthetic glycopeptides by HIV-1 broadly neutralizing antibodies and their unmutated ancestors, *Proc. Natl. Acad. Sci. U. S. A.* 110 (2013) 18214–18219.
- [230] S.M. Alam, B. Aussedat, Y. Vohra, R.R. Meyerhoff, E.M. Cale, W.E. Walkowicz, et al., Mimicry of an HIV broadly neutralizing antibody epitope with a synthetic glycopeptide, *Sci. Transl. Med.* 9 (2017).
- [231] H. Cai, R. Zhang, J. Orwenyo, J. Giddens, Q. Yang, C.C. LaBranche, et al., Multivalent antigen presentation enhances the immunogenicity of a synthetic three-component HIV-1 V3 glycopeptide vaccine, *ACS Cent. Sci.* 4 (2018) 582–589.
- [232] D.C. Dunlop, Antigenic Mimicry as a Strategy for AIDS Vaccine Design [D.Phil.], 2009.

- [233] D.C. Dunlop, C. Bonomelli, F. Mansab, S. Vasiljevic, K.J. Doores, M.R. Wormald, et al., Polysaccharide mimicry of the epitope of the broadly neutralizing anti-HIV antibody, 2G12, induces enhanced antibody responses to self oligomannose glycans, *Glycobiology*. 20 (2010) 812–823.
- [234] C. Agrawal-Gamse, R.J. Luallen, B. Liu, H. Fu, F.H. Lee, Y. Geng, et al., Yeast-elicited cross-reactive antibodies to HIV Env glycans efficiently neutralize virions expressing exclusively high-mannose N-linked glycans, *J. Virol.* 85 (2011) 470–480.
- [235] B.E. Clark, K. Auyeung, E. Fregolino, M. Parrilli, R. Lanzetta, C. De Castro, et al., A bacterial lipooligosaccharide that naturally mimics the epitope of the HIV-neutralizing antibody 2G12 as a template for vaccine design, *Chem. Biol.* 19 (2012) 254–263.
- [236] R.L. Stanfield, C. De Castro, A.M. Marzaioli, I.A. Wilson, R. Pantophlet, Crystal structure of the HIV neutralizing antibody 2G12 in complex with a bacterial oligosaccharide analog of mammalian oligomannose, *Glycobiology*. 25 (2015) 412–419.
- [237] R. Pantophlet, N. Trattig, S. Murrell, N. Lu, D. Chau, C. Rempel, et al., Bacterially derived synthetic mimetics of mammalian oligomannose prime antibody responses that neutralize HIV infectivity, *Nat. Commun.* 8 (2017) 1601.
- [238] M. Bonsignori, H.X. Liao, F. Gao, W.B. Williams, S.M. Alam, D.C. Montefiori, et al., Antibody-virus co-evolution in HIV infection: paths for HIV vaccine development, *Immunol. Rev.* 275 (2017) 145–160.
- [239] J.N. Bhiman, C. Anthony, N.A. Doria-Rose, O. Karimanzira, C.A. Schramm, T. Khoza, et al., Viral variants that initiate and drive maturation of V1V2-directed HIV-1 broadly neutralizing antibodies, *Nat. Med.* 21 (2015) 1332–1336.
- [240] L. Stamatatos, M. Pancera, A.T. McGuire, Germline-targeting immunogens, *Immunol. Rev.* 275 (2017) 203–216.
- [241] M. Medina-Ramirez, F. Garces, A. Escolano, P. Skog, S.W. de Taeye, I. Del Moral-Sanchez, et al., Design and crystal structure of a native-like HIV-1 envelope trimer that engages multiple broadly neutralizing antibody precursors in vivo, *J. Exp. Med.* 214 (2017) 2573–2590.
- [242] A.T. McGuire, S. Hoot, A.M. Dreyer, A. Lippy, A. Stuart, K. W. Cohen, et al., Engineering HIV envelope protein to activate germline B cell receptors of broadly neutralizing anti-CD4 binding site antibodies, *J. Exp. Med.* 210 (2013) 655–663.
- [243] J. Jardine, J.P. Julien, S. Menis, T. Ota, O. Kalyuzhnyi, A. McGuire, et al., Rational HIV immunogen design to target specific germline B cell receptors, *Science*. 340 (2013) 711–716.
- [244] J.M. Steichen, D.W. Kulp, T. Tokatlian, A. Escolano, P. Dosenovic, R.L. Stanfield, et al., HIV vaccine design to target germline precursors of glycan-dependent broadly neutralizing antibodies, *Immunity*. 45 (2016) 483–496.
- [245] A. Escolano, J.M. Steichen, P. Dosenovic, D.W. Kulp, J. Golijanin, D. Sok, et al., Sequential immunization elicits broadly neutralizing anti-HIV-1 antibodies in Ig knockin mice, *Cell*. 166 (2016) 1445–1458 (e12).