

RESEARCH ARTICLE

# White-Matter Development is Different in Bilingual and Monolingual Children: A Longitudinal DTI Study

Seyede Ghazal Mohades<sup>1\*</sup>, Peter Van Schuerbeek<sup>2</sup>, Yves Rosseel<sup>5</sup>, Piet Van De Craen<sup>1</sup>, Robert Luybaert<sup>1,2</sup>, Chris Baeken<sup>3,4</sup>

**1** Vrije Universiteit Brussel (VUB), Brussels, Belgium, **2** Radiology, Universitair Ziekenhuis Brussel (UZBrussel), Brussels, Belgium, **3** Department of Psychiatry University Hospital, Brussels, Belgium, **4** Department of Psychiatry and Medical Psychology, Ghent University, Ghent, Belgium, **5** Department of Data Analysis, Ghent University, Ghent, Belgium

\* [smohades@vub.ac.be](mailto:smohades@vub.ac.be)



**OPEN ACCESS**

**Citation:** Mohades SG, Van Schuerbeek P, Rosseel Y, Van De Craen P, Luybaert R, Baeken C (2015) White-Matter Development is Different in Bilingual and Monolingual Children: A Longitudinal DTI Study. PLoS ONE 10(2): e0117968. doi:10.1371/journal.pone.0117968

**Academic Editor:** Peter Howell, University College London, UNITED KINGDOM

**Received:** July 23, 2014

**Accepted:** December 23, 2014

**Published:** February 23, 2015

**Copyright:** © 2015 Mohades et al. This is an open access article distributed under the terms of the [Creative Commons Attribution License](https://creativecommons.org/licenses/by/4.0/), which permits unrestricted use, distribution, and reproduction in any medium, provided the original author and source are credited.

**Data Availability Statement:** All relevant data are within the paper and its Supporting Information files.

**Funding:** This research was supported by de Onderzoeksraad (OZR) Research council of Vrije universiteit Brussel under the project: Project: A semi-longitudinal, multidisciplinary, neuroscientific study of bilingualism in development. The funders had no role in study design, data collection and analysis, decision to publish, or preparation of the manuscript.

**Competing Interests:** The authors have declared that no competing interests exist.

## Abstract

Although numerous people grow up speaking more than one language, the impact of bilingualism on brain developing neuroanatomy is still poorly understood. This study aimed to determine whether the changes in the mean fractional-anisotropy (MFA) of language pathways are different between bilingual and monolingual children. Simultaneous-bilinguals, sequential-bilinguals and monolingual, male and female 10–13 years old children participated in this longitudinal study over a period of two years. We used diffusion tensor tractography to obtain mean fractional-anisotropy values of four language related pathways and one control bundle: 1-left-inferior-occipitofrontal fasciculus//I/FOF, 2-left-arcuate fasciculus//I/AF//SLF, 3-bundle arising from the anterior part of corpus-callosum and projecting to orbital lobe/AC-OL, 4-fibres emerging from anterior-midbody of corpus-callosum (CC) to motor cortices/AMB-PMC, 5- right-inferior-occipitofrontal fasciculus rI/FOF as the control pathway unrelated to language. These values and their rate of change were compared between 3 groups. FA-values did not change significantly over two years for I/AF//SLF and AC-OL. Sequential-bilinguals had the highest degree of change in the MFA value of I/FOF, and AMB-PMC did not present significant group differences. The comparison of MFA of I/FOF yielded a significantly higher FA-value in simultaneous bilinguals compared to monolinguals. These findings acknowledge the existing difference of the development of the semantic processing specific pathway between children with different semantic processing procedure. These also support the hypothesis that age of second language acquisition affects the maturation and myelination of some language specific white-matter pathways.

## Introduction

Since multiple language societies are expanding, with increasing numbers of families with bilingual children, the interest of the scientific community to study the effect of dual language

acquisition on cerebral structure, functionality and performance in children has grown. Second language acquisition situations (explicit vs. implicit learning, the age of exposure to second language and more) have been shown to cause differences in second language proficiency by many researchers [1]. There is some evidence that speaking more than one language alters cognitive [2] and attention network processes [3]. This ability may have a beneficent effect on the maintenance of brain integrity with age [2,4–8]. The bilingual's ability to simultaneously activate two languages, to continuously switch between them, and to inhibit the non-target language [9], can be expected to positively affect the brain structures and networks underlying language and cognition processes [10,11].

The structure-function relation of the brain has been investigated in a number of bilingualism studies. In a study of brain integrity in the elderly, it was demonstrated that the integrity of bilinguals' brain has a slower rate of decline compared to monolinguals [6]. In another study examining cerebral atrophy in Alzheimer disease, comparing bilingual patients with monolingual controls, computed tomography (CT) showed increased atrophy in bilinguals in areas used to distinguish AD; this shows that bilingualism alters the structure of specific brain regions [12].

Nevertheless, the study of bilingualism and its impact on brain neuroanatomy remains obscure. One of the unanswered questions refers to the differences in brain microstructure development between bilinguals and monolinguals. Because brain development and maturation occurs to a large extent in childhood, a direct approach to investigating maturational changes of bilingualism in terms of the functionality of the pathways involved needs follow-up studies that compare the microstructure of the brain at different time points in children exhibiting relevant functional differences.

Brain adaptation to a changing environment, known as plasticity [13,14], is altered by bilingualism both in the gray matter volumes [11], the microstructure of white-matter pathways [15], and the cross-sectional area of sub-regions of the corpus callosum [16]. However, none of these studies investigated the developmental changes in the microstructural correlates of bilingualism; and there has been no structural brain imaging study in bilingual children. Further, the age of L2 acquisition is commonly overlooked in present studies. To the best of our knowledge, concerning the impact of bilingualism on the microstructural changes in white-matter, no such quantitative longitudinal studies have been carried out.

Diffusion tensor imaging (DTI) has been used as a non-invasive tool to characterize white-matter microstructure in vivo [17]. It provides quantitative information about the integrity and maturation of the brain through quantities like fractional anisotropy (FA), apparent diffusion coefficient (ADC) [18–20] and can be used to study the development of white-matter pathways [21]. Recently, longitudinal DTI has been used to study the effect of normal aging [22–24].

In their longitudinal DTI study in children Yeatman et al (2012) have found active biological processes in some white-matter tracts, which significantly differed according to their reading skills. Here they reported that children with higher reading proficiency had a lower MFA value on the pathways IAF and IIFOF which increased over time; while those with below-average reading skills yielded a higher initial MFA with a fast decline over time [25]. In another longitudinal study on dyslexic children, Hoeft et al (2011) predicted reading improvement based on variation in brain function and structure [26]. Treit and colleagues (2013) also reported a correlation between the changes in mean diffusivity and reading ability of patients with FASD (Fetal Alcohol Spectrum disorders) [27]. These findings reinforce the hypothesis that the functionality of specific pathways may impact the way these pathways mature.

In the current longitudinal tractography study, we have examined the development of the microstructure of four language-processing-related pathways in elementary school children using magnetic resonance diffusion tensor imaging (MR-DTI). We included three groups of

subjects: simultaneous and sequential bilinguals (SimBils and SeqBils), and monolinguals (Monos). Simultaneous bilinguals were defined as individuals who acquired both their languages in parallel from birth, while sequential bilinguals were exposed to their second language from the age of three (at school). The choice of language-related pathways was motivated in our earlier study [10]. In short, the first pathway is the left inferior occipitofrontal fasciculus (IIFO), which provides the ventral connection for language processing and is involved in semantic processing [28–30]. The second comprises the left arcuate fasciculus/superior longitudinal fasciculus (IAF/SLF), the dorsal stream [31], connecting Wernicke's area to Broca's area [32]. The third is the bundle connecting the anterior part of the corpus callosum to the orbital lobe (AC-OL). And the fourth is the bundle of fibres emerging from the anterior midbody (AMB) of the corpus callosum that are associated with the premotor and supplementary motor cortices (AMB-PMC). This part of the corpus callosum was reported to have a larger mid-sagittal area in bilinguals as compared to monolinguals [16]. We added right inferior occipitofrontal fasciculus (rIIFO) as a non-linguistic pathway to act a control bundle.

In our previous study of the impact of bilingualism on the microstructure of language-specific pathways [10], it was observed that MFA value of the IIFO and AC-OL differed significantly between the two groups of bilinguals and monolingual controls. SimBils showed the highest and Monos had the lowest MFA on the IIFO bundle. While it was demonstrated that the bundle AC-OL has higher MFA in Monos compared to SimBils. In all cases the MFA of the bundles in SeqBils was amid the two other groups.

Our hypothesis driven aim was to supplement our earlier results with data on the diffusion anisotropy after an interval of about two years following the first observations. We expected the differences between the 3 language groups observed at the beginning of the two-year period (as documented in [10]) to be confirmed at the end of the interval. In addition, based on the findings from previous longitudinal studies [25–27,33] that report the impact of specific functions on white-matter development, we hypothesized that functional differences between the language groups would affect the maturation rate of their language related pathways. Especially the IIFO, which is involved in semantic processing, was expected to reflect maturation rate differences: bilinguals have to process more semantic data (in 2 different languages) and are therefore especially dependent upon efficient neural connections in this bundle [34–36].

## Methodology

### Participants

Forty healthy male and female children who also served in our first study [10] were reassessed after an average time interval of 2 years (19–27 months, mean: 22.3 months; SD: 2.3 months). The female to male ratio was 1/1 (see Table 1). As before, the children were subdivided in 3 groups with equal variances (14 simultaneous bilinguals, 16 sequential bilinguals and 10 monolinguals). All subjects used French or Dutch as their first language (L1) and the second language (L2) of the bilinguals was restricted to Roman or Germanic languages, both branches of the Indo-European language family.

### DTI and MRI acquisition

The DTI and 3D MR data were acquired on a Philips Achieva 3T MR scanner with sequence parameters as previously described [10]: DTI was based on a single-shot, echo-planar Stejskal-Tanner sequence with 15 non-collinear diffusion gradients [ $b = 700$ ; TR/TE = 6484ms/ 60ms; FOV = 224x224x120 mm<sup>3</sup> covering 60 oblique axial with no gap and 1.75x1.75 x 2 mm<sup>3</sup> resolution, total scan duration = 454s; number of averages per scan = 4]. This was supplemented by a 3D

**Table 1. Language group information.**

Group	Age2 [Months] (Max-Min) Mean (SD)	Age1 [Months] (Max-Min) Mean (SD)	Gender (F/M)	Time interval [Months] (Max-Min) Mean (SD)
Simultaneous bilinguals	(118–165) 137 (11)	(99–141) 113 (11)	6/8	(19–37) 23 (5)
Sequential bilinguals	(116–154) 136 (12)	(96–131) 115 (11)	9/7	(19–24) 22 (2)
Monolinguals	(120–148) 133 (10)	(100–124) 111 (9)	5/5	(19–25) 22 (3)

The study had been approved by the Ethics Committee of our University Hospital (UZBrussel, Belgium) and informed written consent was obtained from all parents and the documents were recorded.

doi:10.1371/journal.pone.0117968.t001

anatomical scan consisting of a T1- weighted turbo-field-echo sequence [TR/TE = 12ms/3.75ms; FOV = 200x200x200 mm<sup>3</sup>; 100 axial slices; 1x1x2 mm<sup>3</sup> resolution; total scan duration = 383s].

### DTI analysis

As in our previous paper [10], within slice registration was performed to correct for eddy current distortion. The DTIStudio program was used to analyze the registered images and to produce corresponding Fractional Anisotropic maps [37]. A detailed description of using the PAR/REC files and deriving FA maps was reported in [10].

The FACT-algorithm (Fibre Assignment by Continuous Tracking) [38] was applied to reconstruct the 3d tracts, responsible for language processing. Each tract started from the centre of a voxel with an FA value exceeding 0.2, proceeded along the eigenvectors of neighbouring voxels and ended when the FA became smaller than 0.2 or when the tract deviated by more than 40 degrees. In order to select the desired fibre bundles, we used a region-of-interest (ROI) based approach (Fig. 1). The four selected bundles were the IAF/ ISLF, the IFOF and the AC-OL, which were tracked by a two-ROI approach, and the AMB-PMC, which was found by means of a single ROI.

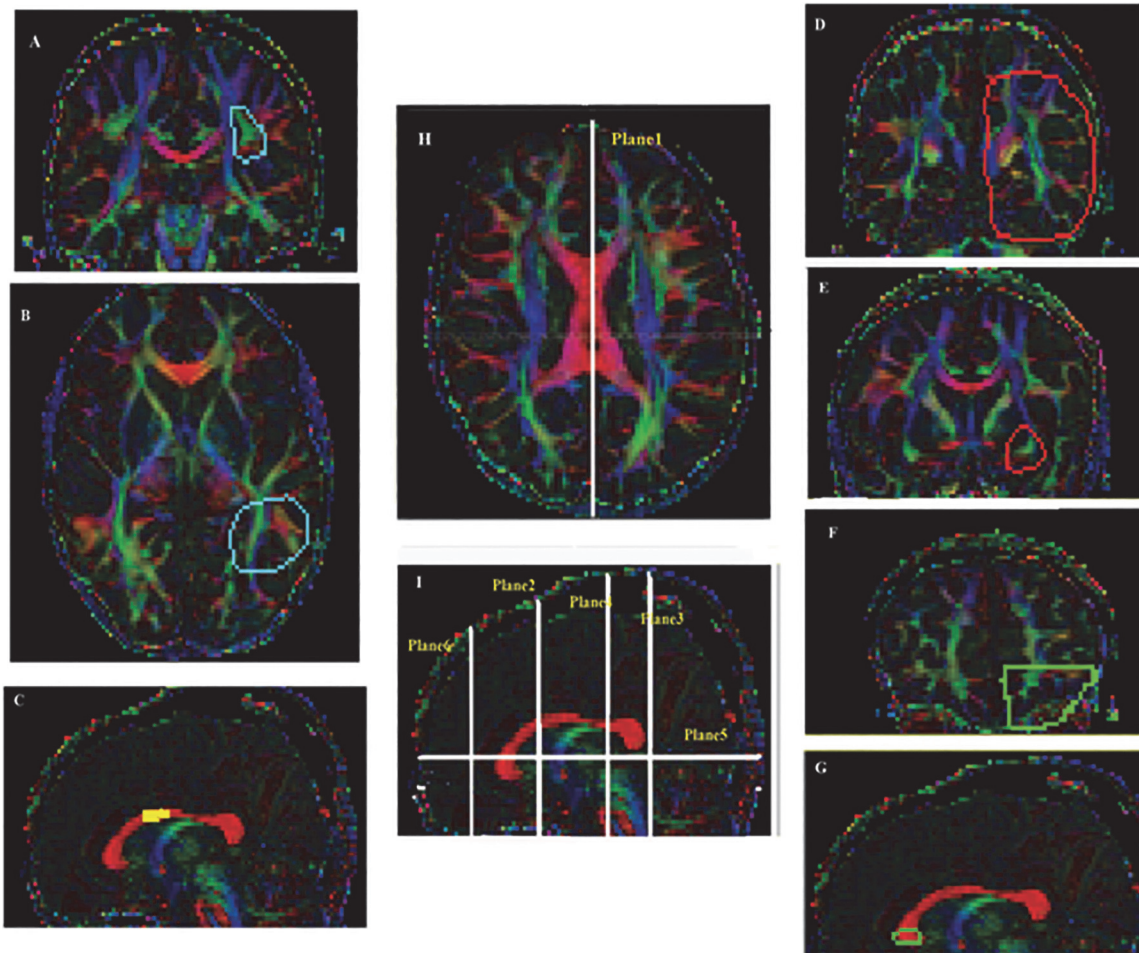
These ROIs had been saved for each subject in the first study (at time T1), and in order to have an accurately identical tracking in the follow-up study (at time T2), the same ROIs were used there. To this end, the 3D anatomical scans for both time points were normalized and registered to a customized paediatric template that was made based on the age and gender distribution of our study sample (at both time-points). In order to minimize the risk of errors due to using available templates that are based on adult population, Template-O-Matic toolbox was used to create the customized template using the age of subjects at both time-points and also the gender distribution [39].

The resulting normalization parameters were used for registering the diffusion images and corresponding FA maps of the both waves of scans to the template. Thus the risk of miss-localization of ROIs due to brain growth was minimized. The ROIs from T1 were then loaded on the images of T2, avoiding any manual redrawing of the ROIs.

### Quantitative and statistical analysis

The fibre tracking data were analyzed using SPSS version 20.0 (SPSS Inc, Chicago, IL USA). For each bundle and for each subject, we computed the mean FA-value (MFA) and its standard deviation. The Shapiro-Wilk test was used to assess the normality of the resulting data distribution in each language group. The majority of these distributions were not normal.

To test for gender differences, we used the two-sample t-test to compare the MFA values at time 1, the MFA values at time 2, and the change between the two MFA values ( $\Delta$ MFA).



**Fig 1.** Location of ROIs to trace specific fibres; plane1: mid-sagittal slice; plane2: a coronal slice located half-way between the genu of the CC and the anterior margin of the insula; plane3: a coronal slice behind the splenium of the CC; plane4: a coronal slice at the level of the rolandic operculum; plane5: an axial slice lateral to the ventricular trigone; plane6: a coronal slice between the anterior edge of the CC and the anterior end of cerebral hemisphere Cyan ROIs (A: plane4 and B: plane5) are those to trace IAF//SLF [81], green ROIs (F: plane6 and G: plane1) to trace AC-OL [82], the yellow ROI (C: plane1) to trace AMB-PMC [83] and the red ROIs (D: plane3 and E: plane2) to trace I/FOF [44] [Taken from our previous study[10]].

doi:10.1371/journal.pone.0117968.g001

To test our main research question, a repeated measures ANOVA was applied to assess the main effect of language group ('Group'), the main effect of the time interval ('Time') and also the interaction effect ('Time x Group'). A separate analysis was done for each of the four bundles. Finally, to explore the relationship between the time interval between the two observations ( $\Delta T = T2 - T1$ ) and the corresponding degree of change in MFA values ( $\Delta MFA$ ), we computed bootstrapped Pearson correlation values.

To deal with non-normality, we used bootstrapping (Efron & Tibshirani, 1994) both to assess the significance of the test statistics, and to report confidence intervals for the mean differences in follow-up post-hoc tests. All post-hoc tests were Bonferroni corrected to control for type I error and in all tests P-values smaller than 0.05 were assumed to indicate significance.

## Results

Four participants (3 SeqBils and 1 SimBil) were excluded from further analysis due to the fact that the ROIs on the FA maps for both time points could not be perfectly matched and thus the bundles could not be traced correctly.

### Gender

The two-sample t-tests did not reveal any significant differences between males and females. Only the MFA values of the IFOF in the second time point had a marginally significant difference (F>M),  $t(36) = 2.02$ ,  $P = 0.051$ .

### I/FOF

Here, a significant main effect of time was revealed,  $F(1, 35) = 49.94$ ,  $P < 0.01$  with a large effect size  $\eta^2 = 0.588$ . We also found a significant main effect of Group,  $F(2, 35) = 6.51$ ,  $P < 0.01$  and  $\eta^2 = 0.277$ .

One way ANOVA revealed a significant group difference for this bundle in the second wave of scans  $F(2, 35) = 3.455$ ,  $P = 0.043$ . Bonferroni corrected Post-Hoc comparisons for I/FOF-2nd showed a significant difference between Monos < SimBils ( $P = 0.038$ ).

The interaction effect 'Time x Group' was also significant,  $F(2, 35) = 3.432$ ,  $P = 0.044$  with an effect size of  $\eta^2 = 0.164$ . Bonferroni corrected Post-hoc comparisons revealed a significant group difference between simultaneous > sequential bilinguals ( $P = 0.028$ ). The comparison between SimBils > Monos also led to a significant difference ( $P = 0.006$ ). But no significant difference could be observed in the comparison between Monos and SeqBils ( $P = 0.919$ ).

The correlation analysis indicated that the  $\Delta$ MFA value of I/FOF pathway was positively correlated with  $\Delta T$  (correlation coefficient = 0.722,  $P = 0.03$ ).

ANOVA test also showed a significant group difference for  $\Delta$ MFA value of the bundle I/FOF  $F(2, 35) = 3.432$ ,  $p = 0.044$ . [Table 2](#) summarizes the results of Post-hoc Bonferroni corrected tests. ([Fig. 2B](#) shows the Delta I/FOF value for the bundle I/FOF in 3 groups). These show that the MFA value of the bundle I/FOF has changed the most in SeqBils compared to the 2 other groups.

### IAF/ISLF

There was a significant main effect of Time for this bundle,  $F(1, 35) = 28.67$ ,  $P < 0.01$ . However, there was no significant effect for Group,  $F(2, 35) = 0.02$ ,  $P = 0.98$ , and no interaction effect ('Group x Time'),  $F(2, 35) = 1.19$ ,  $P = 0.32$ . The  $\Delta$ MFA values of the IAF/ISLF bundle did not correlate significantly with  $\Delta T$ , correlation coefficient = 0.103,  $P = 0.54$ .

### AC-OL

For the AC-OL, no significant differences were found between the two time points,  $F(1, 35) = 2.58$ ,  $P = 0.12$ . There was also no main effect of Group,  $F(2, 35) = 0.35$ ,  $P = 0.71$  and no interaction effect,  $F(2, 35) = 1.19$ ,  $P = 0.32$ . The  $\Delta$ MFA values of this bundle did not correlate significantly with  $\Delta T$ , correlation coefficient = 0.06,  $P = 0.72$ .

### PMC

For this bundle, a significant main effect of Time was revealed,  $F(1, 35) = 57.3$ ,  $P < 0.01$ . However, we did not find any significant group differences,  $F(2, 35) = 0.98$ ,  $P = 0.39$ , and no interaction effect,  $F(2, 35) = 0.008$ ,  $P = 0.99$ . The correlation analysis indicated that the  $\Delta$ MFA

**Table 2. Post-Hoc comparison for Interaction effects using ΔMFA Values for the bundle IFOF.**

	Multiple Comparisons				Bootstrap		
	(I) Group	(J) Group	Mean Difference (I-J)	Sig.	Std. Error	95% Confidence Interval	
						Lower Bound	Upper Bound
DeltalOF	Mono	SeqBil	-0.0139	0.58	0.0098	-0.0352	0.0052
		SimBil	0.0125	0.67	0.0078	-0.0043	0.0284
	SeqBil	Mono	0.0139	0.58	0.0098	-0.0039	0.0328
		SimBil	<b>0.0264*</b>	<b>0.03</b>	<b>0.0102</b>	<b>0.0077</b>	<b>0.0445</b>
	SimBil	Mono	-0.0125	0.67	0.0078	-0.0267	0.0021
		SeqBil	<b>-0.0264*</b>	<b>0.03</b>	<b>0.0102</b>	<b>-0.0483</b>	<b>-0.0058</b>

\* The mean difference is significant at the 0.05 level.

Bootstrap results are based on 1000 stratified bootstrap samples.

Fig. 2A represents the MFA values of the IFOF for the three groups and two runs.

doi:10.1371/journal.pone.0117968.t002

value of the PMC pathway was not significantly correlated with ΔT, correlation coefficient = 0.01,  $P = 0.54$ .

### rIFOF

The MFA value of this control pathway did not show any significant difference between the three groups in one-way ANOVA for either of the two waves of scans. The comparison for rIFOF-1st run resulted in  $F(2,35) = 0.863$ ,  $P = 0.4307$  and the second run  $F(2,35) = 1.532$ ,  $P = 0.2302$ .

In repeated measures ANOVA a significant effect of time was revealed,  $F(1, 35) = 27.1$ ,  $P = 0.02$ , whereas no effect of language group  $F(2, 35) = 0.35$ ,  $P = 0.67$ , and no interaction effect,  $F(2, 35) = 0.03$ ,  $P = 0.9705$  was found for this bundle

## Discussion

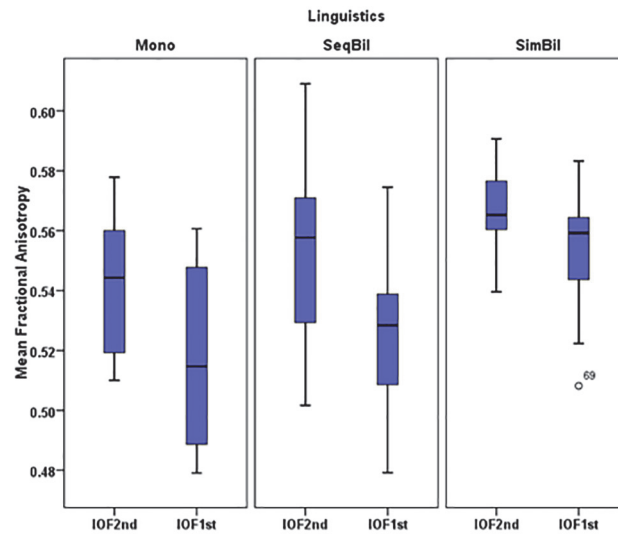
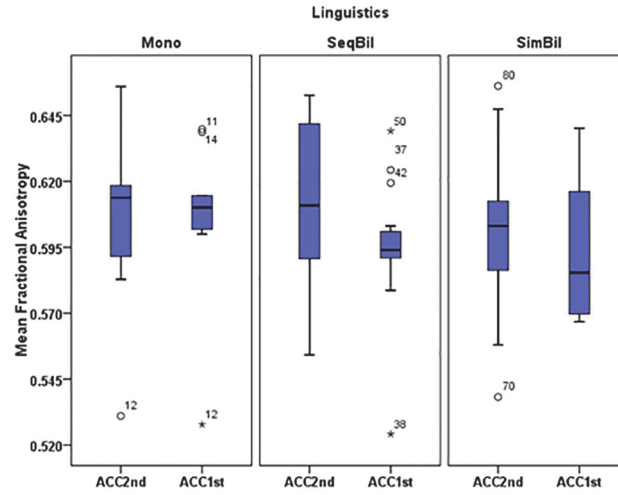
Based on our hypothesis that speaking more than one language affects the maturation of the brain, we conducted a 2 year longitudinal DTI study examining the mean fractional anisotropy, MFA, of four distinct language-related pathways in simultaneous and sequential bilingual and monolingual children. The first wave of scans was conducted at an age around 9 years (T1) and the second wave after a time interval of about two years (T2).

We have limited our investigations of the fibres AF/SLF and IFOF to the left hemisphere based on the left lateralization of language in more than 95% of right-handed people [40,41] and also the fact that the role of IFOF and IAF in language processing is well established [30,42–45].

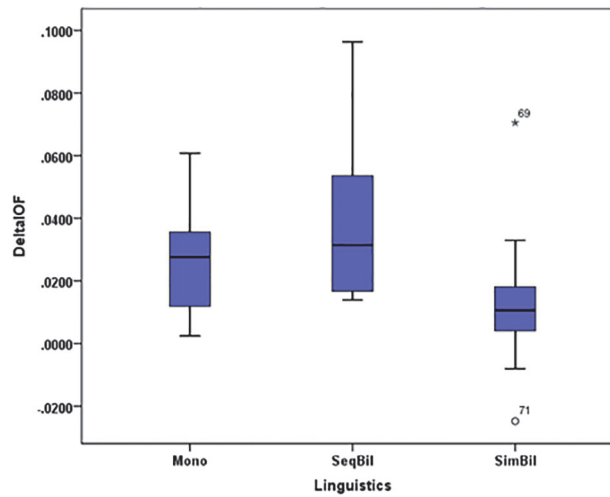
### The results of the 1st cross-sectional study

The data obtained at T1 already gave rise to an earlier cross-sectional report focused on the bilingualism-related differences in the white-matter of children between the ages of 8–10 years [10].

Using parametric tests it showed that the IFOF and AC-OL were characterized by MFA values that were significantly different between the monolinguals and the two groups of bilinguals.



(A)



(B)



**Fig 2. Distribution of MFA values and  $\Delta$ MFA for the 3 groups A) Distribution of MFA values of the bundles AC-OL and I/FOF for the 3 groups and 2 time-points B)  $\Delta$ MFA of the bundle I/FOF for the 3 groups.**

doi:10.1371/journal.pone.0117968.g002

## The results of the follow-up study

With the exception of the AC-OL, all bundles showed at least marginally significant changes in MFA over the period of two years.

For the AC-OL, the group comparisons confirmed the difference in MFA between the language groups encountered at T1 in our previous study. However, this difference could no longer be established at time T2. The absence of significant group differences in the MFA of IAF/ISLF and PMC at T1 was confirmed at T2. The MFA of the I/FOF showed significant differences between the language groups at both T1 and T2. Also  $\Delta$ MFA for this bundle differed significantly between the groups. Post-hoc tests showed these differences could be restricted to the comparisons SeqBil vs. SimBil in the case of  $\Delta$ MFA and SimBil vs. Mono in the case of MFA2.

## I/FOF

Among widely so many areas in the temporal, parietal and frontal parts of the brain which are involved in semantic processing [29,46,47], the left inferior fronto-occipital fasciculus (I/FOF) shows significant correlation with mostly all semantic procedures [48]. The I/FOF is part of an important subcortical structure underlying the “semantic processing network” [29,49].

This longitudinal DTI study indicates that bilingual children, who have different semantic processing procedures compared to monolinguals, have a different rate of developing the bundle I/FOF which is a semantic processing specified pathway. As at T1 we showed significant bilingualism—related differences in the MFA values for this bundle [10], The bundle I/FOF was of main interest of the present study as we expected it to be most affected by bilingualism. I/FOF connects the prefrontal brain regions to the occipital lobes and is of major importance for language processing. The dorsolateral prefrontal cortex is a part of language-control network which is specifically activated in bilingual language tasks [50]; and the temporal and occipital lobes process the visual and audio language stimuli. Subcortical stimulation studies have demonstrated the participation of I/FOF in semantic processing [29], while a picture-word-matching experiment has confirmed its role in visual-verbal incongruence judgment [51]. Its established role in word recognition and reading ability [52] and our current findings further confirms the importance of this pathway for language processing.

Recently, a clear correlation has been reported between the integrity of inferior longitudinal fasciculus (ILF) and object recognition in children [53]. This pathway is also known to carry visual information from the occipital brain regions to the temporal lobes [54] and to link the representation of objects to their lexical labels [55,56]. As there is a strong correlation between ILF and I/FOF [57], this indicates that I/FOF may also play a role in the process of object recognition [58]. Researchers of early language pay special attention to children under 2 year playing with objects [59–62]. They link the substitution of objects in this play (e.g. using a stick as a sword) [59], to early language development [60,61,63].

The significant group difference in the  $\Delta$ MFA values of the I/FOF bundle suggests different maturation rates of this bundle for the three groups.

In this longitudinal study we found significant changes in MFA value of I/FOF over 2-year time; reflecting the alterations in fibre characteristics during this period. The findings in the second wave of scans are consistent with the previous cross-sectional study [10] that showed significantly higher MFA values of the bundle I/FOF in bilinguals compared to monolinguals.

Furthermore, Lebel and colleagues have reported that many fibres—such as SLF and IFOF—reach their maximal anisotropic changes between 13 and 20 years [64]. Compatible to their findings, in our study, the IFOF bundle also showed significant increases in MFA value. Moreover, our results suggest that these changes are associated with linguistic skills and with age of SLA in children. In other words, maturation of this fibre seems to be related to semantic differences in bilingual children's linguistic skills and also associated with the duration of being bilingual. Nevertheless, a direct assessment of semantic skills and correlation with MFA changes would be necessary for a more precise interpretation.

### IAF/ISLF

In our previous study [10], we had found that the bundle IAF/ISLF could not be reconstructed in all cases. This fact was explained by the incomplete myelination in the subjects involved, a result of the relatively slow rate of maturation of this specific tract (the myelination process of this bundle was reported to continue until the 3<sup>rd</sup> decade of life [65,66]). Although this bundle did not show significant difference between the 3 groups in either of the two waves of observations, the fact that the MFA values of the two groups of bilinguals changed significantly over the two years, while it did not change in monolinguals supports the idea that the maturation of this bundle occurs faster in bilinguals compared to monolinguals.

### AC-OL

Our observation that the AC-OL bundle did not differ significantly between the three groups at T2, in spite of the higher MFA in monolinguals compared to bilinguals at T1, could indicate that the bilinguals have caught up with the monolinguals regarding the development of these fibres passing from the anterior part of the corpus callosum to the orbital lobe, however more specific and precise interpretation of the lack of previously seen differences is only possible by replication of this study with more participants, longer time intervals between the two scan time points. With a relatively short (~2 years) interval between T1 and T2, certain tracts may undergo late or protracted myelination in young children.

The role of this bundle in language processing is still ambiguous, however, there is a reported relationship between the degree of brain lateralization and the size of anterior corpus-callosum [67]. The established correlation between language lateralization and the size of the corpus-callosum [68,69], and also the difference in the degree of language lateralization between bilinguals and monolinguals [70], strengthens the contribution of the bundle AC-OL to bilingualism. The proven role of orbitofrontal cortex (OFC) in understanding others' mental state [71], receiving input from audio stimuli [72], and sentence completion tasks [73] makes this part of the brain particularly important for linguistic studies. Moreover, in a condition of deliberately selecting a word that fits a sentence and obeys semantic or syntactic rules, the OFC activation is clearly observed [73]. Monitoring two languages at the same time and the need to select the suitable word between the two languages makes this selection process more crucial for bilinguals and causes difference in the maturation rate of fibres passing this area of their brain compared to monolinguals.

### AMB-PMC

In case of the bundle PMC, the tests did not result in significant difference between the MFA values of the 3 groups at the time T1 and T2. This shows that challenging our assumptions, we may have to reject the hypothesis that bigger cross-sectional anterior mid-body of the CC [16] is originated from different diffusion characteristics of fibres. However, the possible lack of

statistical power may increase the risk of type 2 errors in the interpretation of the findings of this bundle [74].

Luders et al (2010) investigated the structural changes of the corpus callosum in a large group of children and adolescents aged 5–18 years. They found significant correlations between callosal thickness and age suggesting that the alternating size of corpus callosum may be related to permanent change of fibres connecting homologous cortices in this range of age [75]. Other study groups, also considering wide ranges of age and a large populations, and have reported a continuous maturation of the CC throughout the lifespan [76,77].

### rIFOF

The right IFOF in this study was chosen as a non-language pathway to serve as a control tract. Having no evidence about the role of rIFOF in language circuitry one might consider the maturation of this bundle independent of linguistic differences among the three groups. The significant change in the MFA value of this pathway over the two years and the lack of observed group differences indicates that the maturation process of this bundle over the two-year time interval is not influenced by either bilingualism or age of SLA.

### Age of Second language acquisition and its impact on maturation of fibres

The observation that sequential bilinguals showed the highest degree of change in MFA among the three groups is in line with our hypothesis that the age of SLA affects the microstructural development in the brain of children. Sequential bilinguals learn their second language at the age of three or four from scratch, and pass four stages to reach full proficiency in the L2 which are: home language use, observational and listening stage (non-verbal stage), telegraphic and formulaic speech, and finally productive language use [78,79]. Completing these four stages may last from six months to two years taking into account the individual skills and the quality of L2 learning [80]. Thus at the age of 8–10, when we conducted our first wave of scans, it had been around 3–6 years that SeqBils had full proficiency in their L2 and were considered balanced bilinguals, whereas SimBils at that age had been balanced bilinguals for 8–10 years. At the time of our second wave of scans, bilinguals had 2 more years of full proficiency in their L2 and this counted up to 5–8 years for SeqBils and 10–13 years for SimBils. Compared to the first wave, the proportional difference in the length of proficiency was higher in SeqBils than in SimBils indicating stronger changes over two years in these parts of the brain in SeqBils compared to SimBils. In short, the magnitude of change in MFA of language fibres, and most evident the IFOF is directly related with the years of being bilingual. Sequential bilinguals presented the highest degree of change in the MFA value of their language pathways. In SeqBils, compared to SimBils, the proportional duration of being bilingual ( $\frac{\text{Years of being bilingual at T2}}{\text{Years of being bilingual at T1}}$ ) was higher reflecting a higher  $\Delta$ MFA value for this group.

### Conclusions, future perspectives and Limitations

The results of this study prompt the important conclusion that not only speaking more than one language, but also the age of L2 acquisition affects maturational differences and changes in the white-matter pathways involved in language processing. In spite of the relatively short time-interval between the two waves of observations, these observations support our research hypothesis indicating that language workloads has a significant impact on their myelination and aging process. Language groups that have a non-similar way of using specific pathways

tend to exhibit differences in both their MFA at a given age and the rate at which these MFA change with age.

The most important limitation of this study was the time-interval of 2 years between two waves of the scans, which was chosen in such a way that, at the same time, it allowed detectable changes in the brain and fitted perfectly in our 4-year research project.

A more balanced group design, in larger populations and denser and longer time coverage would increase our understanding of bilingualism-induced developmental differences in the microstructure of white-matter throughout life.

Another point of interest in such longitudinal studies is to look into gender differences and the possible interaction of such differences with the change in the maturational characteristics of the brain. Having larger samples and more powerful statistical comparisons, this may provide a clearer insight about the influence of sex differences in brain maturation.

Another limitation of the current study was that, as the participants were chosen to be balanced proficient bilinguals in the first wave of experiments, the language tests were not re-assessed in the second run. It could be sequential bilinguals became more balanced in their knowledge or use of both languages even in relation to simultaneous bilinguals, and these changes might have been correlated with WM microstructural changes. However, as we did not include the appropriate behavioural measurements in run two this assumption should be interpreted cautiously.

Two methodological limitation regarding fibre-reconstruction in human brain are relative dependence on initial position of ROIs and also dealing with kissing, crossing and fanning fibres. Tract-editing based on prior anatomical knowledge of the specific pathways makes reconstruction results less dependent on the location of ROIs. Together with prior knowledge, terminating the tracking procedure by encountering non-cigar shaped anisotropy (we used  $FA > 0.2$ ) can overcome the problem of crossing and fanning fibres to a reasonable extent [38]

Of note, the pathways currently studied here are surely not the only important ones in language processing and bilingualism related issues. Further studies may do well to examine additional pathways to improve our understanding of bilingualism-induced changes on the maturation of white-matter microstructure.

In order to get a better insight about the developmental differences between the groups in more specific language regions, whole brain analysis techniques e.g. Voxel based morphometry (VBM) or TBSS could be applied.

## Supporting Information

### S1 Dataset. Raw data.

(SAV)

### S1 Highlights

(DOCX)

## Acknowledgments

This research was supported by the Ghent University Multidisciplinary Research Partnership “The integrative neuroscience of behavioral control”.

[Fig. 1](#) is adapted from our previous publication in “Brain research” [10] published by “Elsevier” upon requested permission.

## Author Contributions

Conceived and designed the experiments: SGM PVS YR. Performed the experiments: SGM. Analyzed the data: SGM YR. Contributed reagents/materials/analysis tools: SGM YR. Wrote the paper: SGM CB. Contributed to editing the manuscript: PVDC RL.

## References

1. Butler YG, Hakuta K (2008) Bilingualism and Second Language Acquisition. *The Handbook of Bilingualism*: Blackwell Publishing Ltd. pp. 114.
2. Emmorey K, Luk G, Pyers JE, Bialystok E (2008) The source of enhanced cognitive control in bilinguals: evidence from bimodal bilinguals. *Psychol Sci* 19: 1201–1206. doi: [10.1111/j.1467-9280.2008.02224.x](https://doi.org/10.1111/j.1467-9280.2008.02224.x) PMID: [19121123](https://pubmed.ncbi.nlm.nih.gov/19121123/)
3. Costa A, Hernandez M, Sebastian-Galles N (2008) Bilingualism aids conflict resolution: evidence from the ANT task. *Cognition* 106: 59–86. PMID: [17275801](https://pubmed.ncbi.nlm.nih.gov/17275801/)
4. Bialystok E, Craik FI, Luk G (2012) Bilingualism: consequences for mind and brain. *Trends Cogn Sci* 16: 240–250. doi: [10.1016/j.tics.2012.03.001](https://doi.org/10.1016/j.tics.2012.03.001) PMID: [22464592](https://pubmed.ncbi.nlm.nih.gov/22464592/)
5. Bialystok E, Craik FIM, Grady C, Chau W, Ishii R, et al. (2005) Effect of bilingualism on cognitive control in the Simon task: evidence from MEG. *NeuroImage* 24: 40. PMID: [15588595](https://pubmed.ncbi.nlm.nih.gov/15588595/)
6. Luk G, Bialystok E, Craik FI, Grady CL (2011) Lifelong bilingualism maintains white-matter integrity in older adults. *J Neurosci* 31: 16808–16813. doi: [10.1523/JNEUROSCI.4563-11.2011](https://doi.org/10.1523/JNEUROSCI.4563-11.2011) PMID: [22090506](https://pubmed.ncbi.nlm.nih.gov/22090506/)
7. Takeuchi H, Sekiguchi A, Taki Y, Yokoyama S, Yomogida Y, et al. (2010) Training of working memory impacts structural connectivity. *J Neurosci* 30: 3297–3303. doi: [10.1523/JNEUROSCI.4611-09.2010](https://doi.org/10.1523/JNEUROSCI.4611-09.2010) PMID: [20203189](https://pubmed.ncbi.nlm.nih.gov/20203189/)
8. Flöel A, de Vries MH, Scholz J, Breitenstein C, Johansen-Berg H (2009) White-matter integrity in the vicinity of Broca's area predicts grammar learning success. *NeuroImage* 47: 1974. doi: [10.1016/j.neuroimage.2009.05.046](https://doi.org/10.1016/j.neuroimage.2009.05.046) PMID: [19477281](https://pubmed.ncbi.nlm.nih.gov/19477281/)
9. Kroll JF, Bobb SC, Misra M, Guo T (2008) Language selection in bilingual speech: Evidence for inhibitory processes. *Acta Psychologica* 128: 416. doi: [10.1016/j.actpsy.2008.02.001](https://doi.org/10.1016/j.actpsy.2008.02.001) PMID: [18358449](https://pubmed.ncbi.nlm.nih.gov/18358449/)
10. Mohades SG, Struys E, Van Schuerbeek P, Mondt K, Van De Craen P, et al. (2012) DTI reveals structural differences in white-matter tracts between bilingual and monolingual children. *Brain Research* 1435: 72. doi: [10.1016/j.brainres.2011.12.005](https://doi.org/10.1016/j.brainres.2011.12.005) PMID: [22197702](https://pubmed.ncbi.nlm.nih.gov/22197702/)
11. Mechelli A, Crinion JT, Noppeney U, O'Doherty J, Ashburner J, et al. (2004) Neurolinguistics: Structural plasticity in the bilingual brain. *Nature* 431: 757. PMID: [15483594](https://pubmed.ncbi.nlm.nih.gov/15483594/)
12. Schweizer T, Ware J, Fischer C, Craik F, Bialystok E (2012) Bilingualism as a contributor to cognitive reserve: evidence from brain atrophy in Alzheimer's disease. *Cortex; a journal devoted to the study of the nervous system and behavior* 48: 991–996. doi: [10.1016/j.cortex.2011.04.009](https://doi.org/10.1016/j.cortex.2011.04.009) PMID: [21596373](https://pubmed.ncbi.nlm.nih.gov/21596373/)
13. Pascual-Leone A, Freitas C, Oberman L, Horvath JC, Halko M, et al. (2011) Characterizing brain cortical plasticity and network dynamics across the age-span in health and disease with TMS-EEG and TMS-fMRI. *Brain Topogr* 24: 302–315. doi: [10.1007/s10548-011-0196-8](https://doi.org/10.1007/s10548-011-0196-8) PMID: [21842407](https://pubmed.ncbi.nlm.nih.gov/21842407/)
14. Pascual-Leone A, Amedi A, Fregni F, Merabet LB (2005) The plastic human brain cortex. *Annu Rev Neurosci* 28: 377–401. PMID: [16022601](https://pubmed.ncbi.nlm.nih.gov/16022601/)
15. Cummine J, Boliek CA (2013) Understanding white-matter integrity stability for bilinguals on language status and reading performance. *Brain Struct Funct* 218: 595–601. doi: [10.1007/s00429-012-0466-6](https://doi.org/10.1007/s00429-012-0466-6) PMID: [23097036](https://pubmed.ncbi.nlm.nih.gov/23097036/)
16. Coggins PE 3rd, Kennedy TJ, Armstrong TA (2004) Bilingual corpus-callosum variability. *Brain Lang* 89: 69–75. PMID: [15010238](https://pubmed.ncbi.nlm.nih.gov/15010238/)
17. Basser PJ, Mattiello J, LeBihan D (1994) MR diffusion tensor spectroscopy and imaging. *Biophys J* 66: 259–267. PMID: [8130344](https://pubmed.ncbi.nlm.nih.gov/8130344/)
18. Madden DJ, Spaniol J, Costello MC, Bucur B, White LE, et al. (2009) Cerebral white matter integrity mediates adult age differences in cognitive performance. *J Cogn Neurosci* 21: 289–302. doi: [10.1162/jocn.2009.21047](https://doi.org/10.1162/jocn.2009.21047) PMID: [18564054](https://pubmed.ncbi.nlm.nih.gov/18564054/)
19. Bava S, Thayer R, Jacobus J, Ward M, Jernigan TL, et al. (2010) Longitudinal characterization of white-matter maturation during adolescence. *Brain Research* 1327: 38. doi: [10.1016/j.brainres.2010.02.066](https://doi.org/10.1016/j.brainres.2010.02.066) PMID: [20206151](https://pubmed.ncbi.nlm.nih.gov/20206151/)
20. Barnea-Goraly N, Menon V, Eckert M, Tamm L, Bammer R, et al. (2005) White-Matter Development During Childhood and Adolescence: A Cross-sectional Diffusion Tensor Imaging Study. *Cerebral Cortex* 15: 1848–1854. PMID: [15758200](https://pubmed.ncbi.nlm.nih.gov/15758200/)

21. Liu Y, Aeby A, Baleriaux D, David P, Absil J, et al. (2012) White-Matter Abnormalities Are Related to Microstructural Changes in Preterm Neonates at Term-Equivalent Age: A Diffusion Tensor Imaging and Probabilistic Tractography Study. *American Journal of Neuroradiology* 33: 839–845. doi: [10.3174/ajnr.A2872](https://doi.org/10.3174/ajnr.A2872) PMID: [22241389](https://pubmed.ncbi.nlm.nih.gov/22241389/)
22. Bennett LJ, Madden DJ, Vaidya CJ, Howard DV, Howard JH (2010) Age-related differences in multiple measures of white matter integrity: A diffusion tensor imaging study of healthy aging. *Hum Brain Mapp* 31: 378–390. doi: [10.1002/hbm.20872](https://doi.org/10.1002/hbm.20872) PMID: [19662658](https://pubmed.ncbi.nlm.nih.gov/19662658/)
23. Meuter RFI, Simmond M (2007) The aging bilingual and executive function: Beyond the Simon effect. The 6th International Symposium on Bilingualism. University of Hamburg, Germany: quteprints:10401.
24. Kennedy KM, Raz N (2009) Aging white matter and cognition: differential effects of regional variations in diffusion properties on memory, executive functions, and speed. *Neuropsychologia* 47: 916–927. doi: [10.1016/j.neuropsychologia.2009.01.001](https://doi.org/10.1016/j.neuropsychologia.2009.01.001) PMID: [19166865](https://pubmed.ncbi.nlm.nih.gov/19166865/)
25. Yeatman JD, Dougherty RF, Ben-Shachar M, Wandell BA (2012) Development of white matter and reading skills. *Proceedings of the National Academy of Sciences* 109: E3045–E3053. doi: [10.1073/pnas.1206792109](https://doi.org/10.1073/pnas.1206792109) PMID: [23045658](https://pubmed.ncbi.nlm.nih.gov/23045658/)
26. Hoeft F, McCandliss BD, Black JM, Gantman A, Zakerani N, et al. (2011) Neural systems predicting long-term outcome in dyslexia. *Proc Natl Acad Sci U S A* 108: 361–366. doi: [10.1073/pnas.1008950108](https://doi.org/10.1073/pnas.1008950108) PMID: [21173250](https://pubmed.ncbi.nlm.nih.gov/21173250/)
27. Treit S, Lebel C, Baugh L, Rasmussen C, Andrew G, et al. (2013) Longitudinal MRI reveals altered trajectory of brain development during childhood and adolescence in fetal alcohol spectrum disorders. *J Neurosci* 33: 10098–10109. doi: [10.1523/JNEUROSCI.5004-12.2013](https://doi.org/10.1523/JNEUROSCI.5004-12.2013) PMID: [23761905](https://pubmed.ncbi.nlm.nih.gov/23761905/)
28. Leclercq D, Duffau H, Delmaire C, Capelle L, Gatignol P, et al. (2010) Comparison of diffusion tensor imaging tractography of language tracts and intraoperative subcortical stimulations. *J Neurosurg* 112: 503–511. doi: [10.3171/2009.8.JNS09558](https://doi.org/10.3171/2009.8.JNS09558) PMID: [19747052](https://pubmed.ncbi.nlm.nih.gov/19747052/)
29. Duffau H, Gatignol P, Mandonnet E, Peruzzi P, Tzourio-Mazoyer N, et al. (2005) New insights into the anatomo-functional connectivity of the semantic system: a study using cortico-subcortical electrostimulations. *Brain* 128: 797–810. PMID: [15705610](https://pubmed.ncbi.nlm.nih.gov/15705610/)
30. Mandonnet E, Nouet AI, Gatignol P, Capelle L, Duffau H (2007) Does the left inferior longitudinal fasciculus play a role in language? A brain stimulation study. *Brain* 130: 623–629. PMID: [17264096](https://pubmed.ncbi.nlm.nih.gov/17264096/)
31. Acton QA (2012) *Advances in Cerebrum Research and Application: 2012 Edition*: ScholarlyEditions. doi: [10.1007/s12070-012-0514-9](https://doi.org/10.1007/s12070-012-0514-9) PMID: [25621271](https://pubmed.ncbi.nlm.nih.gov/25621271/)
32. Brauer J, Anwander A, Friederici AD (2011) Neuroanatomical Prerequisites for Language Functions in the Maturing Brain. *Cerebral Cortex* 21: 459–466. doi: [10.1093/cercor/bhq108](https://doi.org/10.1093/cercor/bhq108) PMID: [20566580](https://pubmed.ncbi.nlm.nih.gov/20566580/)
33. Darki F, Klingberg T (2014) The Role of Fronto-Parietal and Fronto-Striatal Networks in the Development of Working Memory: A Longitudinal Study. *Cereb Cortex*.
34. Turken AU, Whitfield-Gabrieli S, Bammer R, Baldo JV, Dronkers NF, et al. (2008) Cognitive processing speed and the structure of white matter pathways: Convergent evidence from normal variation and lesion studies. *NeuroImage* 42: 1032. doi: [10.1016/j.neuroimage.2008.03.057](https://doi.org/10.1016/j.neuroimage.2008.03.057) PMID: [18602840](https://pubmed.ncbi.nlm.nih.gov/18602840/)
35. Penke L, Munoz Maniega S, Murray C, Gow AJ, Hernandez MC, et al. (2010) A general factor of brain white matter integrity predicts information processing speed in healthy older people. *J Neurosci* 30: 7569–7574. doi: [10.1523/JNEUROSCI.1553-10.2010](https://doi.org/10.1523/JNEUROSCI.1553-10.2010) PMID: [20519531](https://pubmed.ncbi.nlm.nih.gov/20519531/)
36. Segura B, Jurado M, Freixenet N, Bargallo N, Junque C, et al. (2010) White matter fractional anisotropy is related to processing speed in metabolic syndrome patients: a case-control study. *BMC Neurology* 10: 64. doi: [10.1186/1471-2377-10-64](https://doi.org/10.1186/1471-2377-10-64) PMID: [20663196](https://pubmed.ncbi.nlm.nih.gov/20663196/)
37. Jiang H, van Zijl PCM, Kim J, Pearlson GD, Mori S (2006) DtiStudio: Resource program for diffusion tensor computation and fiber bundle tracking. *Computer Methods and Programs in Biomedicine* 81: 106. PMID: [16413083](https://pubmed.ncbi.nlm.nih.gov/16413083/)
38. Mori S, van Zijl PCM (2002) Fiber tracking: principles and strategies—a technical review. *NMR in Biomedicine* 15: 468. PMID: [12489096](https://pubmed.ncbi.nlm.nih.gov/12489096/)
39. Wilke M, Holland SK, Altaye M, Gaser C (2008) Template-O-Matic: a toolbox for creating customized pediatric templates. *Neuroimage* 41: 903–913. doi: [10.1016/j.neuroimage.2008.02.056](https://doi.org/10.1016/j.neuroimage.2008.02.056) PMID: [18424084](https://pubmed.ncbi.nlm.nih.gov/18424084/)
40. Bethmann A, Tempelmann C, De Bleser R, Scheich H, Brechmann A (2007) Determining language laterality by fMRI and dichotic listening. *Brain Res* 1133: 145–157. PMID: [17182011](https://pubmed.ncbi.nlm.nih.gov/17182011/)
41. Vikingstad EM, George KP, Johnson AF, Cao Y (2000) Cortical language lateralization in right handed normal subjects using functional magnetic resonance imaging. *Journal of the Neurological Sciences* 175: 17. PMID: [10785252](https://pubmed.ncbi.nlm.nih.gov/10785252/)

42. Balsamo LM, Xu B, Grandin CB, Petrella JR, Braniecki SH, et al. (2002) A functional magnetic resonance imaging study of left hemisphere language dominance in children. *Arch Neurol* 59: 1168–1174. PMID: [12117366](#)
43. Glasser MF, Rilling JK (2008) DTI tractography of the human brain's language pathways. *Cereb Cortex* 18: 2471–2482. doi: [10.1093/cercor/bhn011](#) PMID: [18281301](#)
44. Rodrigo S, Naggara O, Oppenheim C, Golestani N, Poupon C, et al. (2007) Human Subinsular Asymmetry Studied by Diffusion Tensor Imaging and Fiber Tracking. *AJNR Am J Neuroradiol* 28: 1526–1531. PMID: [17846205](#)
45. Vernooij MW, Smits M, Wielopolski PA, Houston GC, Krestin GP, et al. (2007) Fiber density asymmetry of the arcuate fasciculus in relation to functional hemispheric language lateralization in both right- and left-handed healthy subjects: A combined fMRI and DTI study. *NeuroImage* 35: 1064. PMID: [17320414](#)
46. Cohen L, Dehaene S (2004) Specialization within the ventral stream: the case for the visual word form area. *Neuroimage* 22: 466–476. PMID: [15110040](#)
47. Price CJ (2000) The anatomy of language: contributions from functional neuroimaging. *J Anat* 197 Pt 3: 335–359. PMID: [11117622](#)
48. Han Z, Ma Y, Gong G, He Y, Caramazza A, et al. (2013) White-matter structural connectivity underlying semantic processing: Evidence from brain damaged patients. *Brain*.
49. Martino J, Brogna C, Robles SG, Vergani F, Duffau H (2010) Anatomic dissection of the inferior fronto-occipital fasciculus revisited in the lights of brain stimulation data. *Cortex* 46: 691. doi: [10.1016/j.cortex.2009.07.015](#) PMID: [19775684](#)
50. Abutalebi J, Green D (2007) Bilingual language production: The neurocognition of language representation and control. *Journal of Neurolinguistics* 20: 242.
51. Plaza M, Gagnon P, Cohen H, Berger B, Duffau H (2008) A Discrete Area within the Left Dorsolateral Prefrontal Cortex Involved in Visual Verbal Incongruence Judgment. *Cerebral Cortex* 18: 1253–1259. PMID: [17921457](#)
52. Cohen L, Martinaud O, Lemer C, Lehericy S, Samson Y, et al. (2003) Visual Word Recognition in the Left and Right Hemispheres: Anatomical and Functional Correlates of Peripheral Alexias. *Cerebral Cortex* 13: 1313–1333. PMID: [14615297](#)
53. Ortibus E, Verhoeven J, Sunaert S, Casteels I, de Cock P, et al. (2012) Integrity of the inferior longitudinal fasciculus and impaired object recognition in children: a diffusion tensor imaging study. *Dev Med Child Neurol* 54: 38–43. doi: [10.1111/j.1469-8749.2011.04147.x](#) PMID: [22171928](#)
54. Catani M, Jones DK, Donato R, Ffytche DH (2003) Occipito-temporal connections in the human brain. *Brain* 126: 2093–2107. PMID: [12821517](#)
55. Mummery CJ, Patterson K, Wise RJ, Vandenberghe R, Price CJ, et al. (1999) Disrupted temporal lobe connections in semantic dementia. *Brain* 122 (Pt 1): 61–73.
56. Catani M, Mesulam M (2008) The arcuate fasciculus and the disconnection theme in language and aphasia: history and current state. *Cortex* 44: 953–961. doi: [10.1016/j.cortex.2008.04.002](#) PMID: [18614162](#)
57. Wahl M, Li Y-O, Ng J, LaHue SC, Cooper SR, et al. (2010) Microstructural correlations of white matter tracts in the human brain. *NeuroImage* 51: 531–541. doi: [10.1016/j.neuroimage.2010.02.072](#) PMID: [20206699](#)
58. Ashtari M (2011) Anatomy and functional role of the inferior longitudinal fasciculus: a search that has just begun. *Developmental Medicine & Child Neurology* 54: 6. doi: [10.1038/nr.3099](#) PMID: [25643141](#)
59. Bretherton I (1984) *Symbolic Play: The Development of Social Understanding*: Academic Press. PMID: [25057717](#)
60. Rescorla L, Goossens M (1992) Symbolic Play Development in Toddlers With Expressive Specific Language Impairment (SLI-E). *J Speech Hear Res* 35: 1290–1302. PMID: [1283611](#)
61. Bergen D (2002) The role of pretend play in children's cognitive development: ERIC Clearinghouse.
62. Rutherford MD, Young GS, Hepburn S, Rogers SJ (2007) A longitudinal study of pretend play in autism. *J Autism Dev Disord* 37: 1024–1039. PMID: [17146707](#)
63. Smith LB, Jones SS (2011) Symbolic play connects to language through visual object recognition. *Developmental Science* 14: 1142–1149. doi: [10.1111/j.1467-7687.2011.01065.x](#) PMID: [21884329](#)
64. Lebel C, Walker L, Leemans A, Phillips L, Beaulieu C (2008) Microstructural maturation of the human brain from childhood to adulthood. *Neuroimage* 40: 1044–1055. doi: [10.1016/j.neuroimage.2007.12.053](#) PMID: [18295509](#)

65. Rauschecker AM, Deutsch GK, Ben-Shachar M, Schwartzman A, Perry LM, et al. (2009) Reading impairment in a patient with missing arcuate fasciculus. *Neuropsychologia* 47: 180–194. doi: [10.1016/j.neuropsychologia.2008.08.011](https://doi.org/10.1016/j.neuropsychologia.2008.08.011) PMID: [18775735](https://pubmed.ncbi.nlm.nih.gov/18775735/)
66. Friederici AD (2009) Pathways to language: fiber tracts in the human brain. *Trends in Cognitive Sciences* 13: 175. doi: [10.1016/j.tics.2009.01.001](https://doi.org/10.1016/j.tics.2009.01.001) PMID: [19223226](https://pubmed.ncbi.nlm.nih.gov/19223226/)
67. Putnam MC, Wig GS, Grafton ST, Kelley WM, Gazzaniga MS (2008) Structural organization of the corpus callosum predicts the extent and impact of cortical activity in the nondominant hemisphere. *J Neurosci* 28: 2912–2918. doi: [10.1523/JNEUROSCI.2295-07.2008](https://doi.org/10.1523/JNEUROSCI.2295-07.2008) PMID: [18337422](https://pubmed.ncbi.nlm.nih.gov/18337422/)
68. Josse G, Seghier ML, Kherif F, Price CJ (2008) Explaining function with anatomy: language lateralization and corpus-callosum size. *J Neurosci* 28: 14132–14139. doi: [10.1523/JNEUROSCI.4383-08.2008](https://doi.org/10.1523/JNEUROSCI.4383-08.2008) PMID: [19109495](https://pubmed.ncbi.nlm.nih.gov/19109495/)
69. Witelson SF (1989) Hand and sex differences in the isthmus and genu of the human corpus-callosum. A postmortem morphological study. *Brain* 112 (Pt 3): 799–835.
70. Hull R, Vaid J (2006) Laterality and language experience. *Laterality: Asymmetries of Body, Brain and Cognition* 11: 436.
71. Hynes CA, Baird AA, Grafton ST (2006) Differential role of the orbital frontal lobe in emotional versus cognitive perspective-taking. *Neuropsychologia* 44: 374. PMID: [16112148](https://pubmed.ncbi.nlm.nih.gov/16112148/)
72. Kringsbach ML, Rolls ET (2004) The functional neuroanatomy of the human orbitofrontal cortex: evidence from neuroimaging and neuropsychology. *Progress in Neurobiology* 72: 341. PMID: [15157726](https://pubmed.ncbi.nlm.nih.gov/15157726/)
73. Elliott R, Dolan RJ, Frith CD (2000) Dissociable Functions in the Medial and Lateral Orbitofrontal Cortex: Evidence from Human Neuroimaging Studies. *Cerebral Cortex* 10: 308–317. PMID: [10731225](https://pubmed.ncbi.nlm.nih.gov/10731225/)
74. Christley RM (2010) Power and Error: Increased Risk of False Positive Results in Underpowered Studies. *The Open Epidemiology Journal* 3: 16–19.
75. Luders E, Thompson PM, Toga AW (2010) The development of the corpus callosum in the healthy human brain. *J Neurosci* 30: 10985–10990. doi: [10.1523/JNEUROSCI.5122-09.2010](https://doi.org/10.1523/JNEUROSCI.5122-09.2010) PMID: [20720105](https://pubmed.ncbi.nlm.nih.gov/20720105/)
76. Kim EY, Kim DH, Yoo E, Park HJ, Golay X, et al. (2007) Visualization of maturation of the corpus callosum during childhood and adolescence using T2 relaxometry. *Int J Dev Neurosci* 25: 409–414. PMID: [17964752](https://pubmed.ncbi.nlm.nih.gov/17964752/)
77. Paus T, Collins DL, Evans AC, Leonard G, Pike B, et al. (2001) Maturation of white matter in the human brain: a review of magnetic resonance studies. *Brain Research Bulletin* 54: 255–266. PMID: [11287130](https://pubmed.ncbi.nlm.nih.gov/11287130/)
78. Toppelberg CO, Tabors P, Coggins A, Lum K, Burger C (2005) Differential diagnosis of selective mutism in bilingual children. *J Am Acad Child Adolesc Psychiatry* 44: 592–595. PMID: [15908842](https://pubmed.ncbi.nlm.nih.gov/15908842/)
79. Tabors PO (1997) One child, two languages: a guide for preschool educators of children learning English as a second language: Paul H. Brookes Pub. PMID: [25165803](https://pubmed.ncbi.nlm.nih.gov/25165803/)
80. California Department of Education CDDicwTCfCaFS, WestEd (2012) Dual Language Learners (DLL).
81. Rodrigo S, Oppenheim C, Chassoux F, Hodel J, De Vanssay A, et al. (2008) Language lateralization in temporal lobe epilepsy using functional MRI and probabilistic tractography. *Epilepsia* 49: 1367. doi: [10.1111/j.1528-1167.2008.01607.x](https://doi.org/10.1111/j.1528-1167.2008.01607.x) PMID: [18410362](https://pubmed.ncbi.nlm.nih.gov/18410362/)
82. Huang H, Zhang J, Jiang H, Wakana S, Poetscher L, et al. (2005) DTI tractography based parcellation of white matter: Application to the mid-sagittal morphology of corpus callosum. *NeuroImage* 26: 195. PMID: [15862219](https://pubmed.ncbi.nlm.nih.gov/15862219/)
83. Coggins PE 3rd, Kennedy TJ, Armstrong TA (2004) Bilingual corpus callosum variability. *Brain Lang* 89: 69–75. PMID: [15010238](https://pubmed.ncbi.nlm.nih.gov/15010238/)