

# Virulence and antimicrobial resistance of *Escherichia coli* isolated from Tigris River and children diarrhea

Israa AJ Ibrahim  
Rana M Al-Shwaikh  
Mahmoud I Ismaeil

Department of Biology, College of Education for Pure Science, Ibn Al-Haitham, University of Baghdad, Baghdad, Iraq

**Objective:** To investigate the virulence factors including hemolysin production,  $\beta$ -lactamase production, and biofilm formation. Antimicrobial resistance and plasmid content of 20 *Escherichia coli* isolates obtained from feces and Tigris water were screened.

**Methods:** Ten clinical and ten environmental *E. coli* isolates were collected from children diarrhea and swim areas on Tigris River in Baghdad city, Iraq, respectively. The bacterial isolates were identified by cultural characteristics, Gram stain, biochemical tests, and screened for the presence of *E. coli* O157:H7 serotype. Bacterial *E. coli* isolates were investigated for hemolysin production, biofilm formation, and  $\beta$ -lactamase production. Antibiotics susceptibility and plasmid content were determined.

**Results:** A total of ten clinical and ten water *E. coli* isolates were studied. Results showed that all *E. coli* isolates give negative results for latex O157:H7. Virulence factors analysis showed that 6/10 water isolates and 2/10 clinical isolates were hemolytic, 5/10 water isolates and 3/10 clinical isolates were biofilm formation, and 7/10 water isolates and 4/10 clinical isolates were  $\beta$ -lactamase producer. Antibiotics profile showed that all bacterial isolates were multidrug resistant. All *E. coli* isolates (100%) were resistant to carbenicillin, cefodizime, imipenem, and piperacillin. The plasmid DNA analysis showed that all *E. coli* isolates contained plasmid with molecular weight range between 4.507 kbp and 5.07 kbp, but clinical isolates contained multiple small and mega plasmids.

**Conclusion:** Our study revealed that *E. coli* isolates from river water exhibit a higher level of hemolysin production,  $\beta$ -lactamase production, and biofilm formation than feces isolates may be due to long adaptation. On the other hand, clinical *E. coli* isolates from feces showed higher level of antibiotic resistance and have multiple plasmids.

**Keywords:** *E. coli*, hemolysin,  $\beta$ -lactamase, biofilm, multidrug resistance, plasmid

## Introduction

*Escherichia coli* is a gram-negative bacteria belonging to the Enterobacteriaceae family, short bacilli, non-spore forming, facultative anaerobic, and it is grown on a simple media.<sup>1</sup> *E. coli* is a major component of the human normal intestinal flora. Among the intestinal pathogens, there are six well-described categories: enteropathogenic *E. coli* (EPEC), enterohemorrhagic *E. coli* (EHEC), enterotoxigenic *E. coli*, enteraggregative *E. coli*, enteroinvasive *E. coli*, and diffusely adherent *E. coli*.<sup>2</sup> There are several virulence factors that contribute to *E. coli* pathogenicity, such as pilli, enterotoxins (LT, ST), shiga-like toxins, endotoxin (lipopolysaccharide), hemolysin, aerobactin, cytonecrotizing factor, intimin, and biofilm formation.<sup>3,4</sup> Plasmid profile analysis is useful in determining the epidemical strain in outbreaks caused by multiple species: *Escherichia*,

Correspondence: Israa AJ Ibrahim  
Department of Biology, College of Education for Pure Science, Ibn Al-Haitham, University of Baghdad, Baghdad, Iraq  
Email [israa\\_ibrahim66@yahoo.com](mailto:israa_ibrahim66@yahoo.com)

*Klebsiella*, *Pseudomonas*, *Serratia*, *Streptococcus*, and so on.<sup>5</sup> The adherence plasmid of EPEC strain is associated with the ability of EPEC to adhere to tissue culture cells in a pattern called localized adherence.<sup>6,7</sup> EHEC also carry a large plasmid (91.2 kbp) that is associated with the presence of fimbriae.<sup>8</sup> Plasmids allow the movement of genetic material, including antimicrobial resistance genes, between bacterial species and genera.<sup>9</sup> The widespread development of resistance to several different antibiotics is generally as a result of lateral or horizontal gene transfer.<sup>10</sup> Many studies have demonstrated that plasmid transfer between bacteria occurs in diverse environments. Various diverse phenotypic characteristics are encoded by plasmids; these include antibiotic and metal resistance, degradation of complex organic compounds, production of enterotoxins and colicins, and the production of restriction enzymes.<sup>11</sup> Most of the transfers are described using bacteria from the same group or ecological niche.<sup>12</sup> Plasmids size range from 1 kbp to 2,000 kbp resistance plasmids code for enzymes that can inactivate antibiotics, prevent the uptake of an antibiotic, or pump out the particular antibiotic.<sup>13</sup> Gram-negative bacilli causing nosocomial infections are usually multiple-antibiotic resistant, resulting in significant problems for treatment.<sup>14</sup> The aim of this study is comparing virulence factors and plasmid content among *E. coli* isolates from clinical and environmental sources.

## Materials and methods

### Specimens

In this study, 20 *E. coli* isolates were analyzed, ten *E. coli* isolates were obtained of the Tigris River water in Baghdad city and the other ten bacterial isolates were collected from children diarrhea from Children Hospital Center in Baghdad city. Samples collections were carried out from May to July 2013.

### Isolation and identification of *E. coli*

#### Membrane filter technique

A known volume (30 mL) of water samples collected from swim areas on the Tigris River in Baghdad city was filtered through sterile 47 mm diameter membrane filters with 0.45 µm pores.<sup>15</sup> The membrane filters were placed on the surfaces of eosin methylene blue agar plates for isolation of enteric bacteria and on MacConkey agar plates for isolation of lactose and nonlactose-fermenting bacteria.

#### *E. coli* isolation from clinical samples

Ten *E. coli* isolates were collected from children (aged under 4 years) diarrhea. Fecal samples were cultured on MacConkey agar and eosin methylene blue agar plates.<sup>16</sup>

### Biochemical tests

Enteric bacteria isolated on respective selective and differential media were identified on the basis of colonial characteristics, Gram stain and biochemical tests, IMViC, Urea, and Kligler Iron Agar.<sup>16</sup>

### Latex O157:H7

All *E. coli* isolates were investigated with latex O157:H7 (Well Colex) slide agglutination test.

### Detection of hemolysin production

The *E. coli* isolates tested for blood hemolysis were streaked on blood agar plates containing 5% (v/v) human blood and incubated aerobically at 37°C for 24 hours. The clear zones around the growth colonies indicate a positive reaction.<sup>17</sup>

### Detection of β-lactamase production

All *E. coli* isolates were tested for production of β-lactamase enzyme using iodometric test method.<sup>18</sup>

### Detection of biofilm formation

The ability of *E. coli* isolates to colonize abiotic surface was investigated by using Christensen et al's method.<sup>19</sup> The *E. coli* isolates were cultivated in tubes with Tryptone soy broth and incubated aerobically at 37°C for 48 hours and thereafter the culture tubes were emptied carefully and stained with 1% crystal violet solution for 30 minutes, and then the tubes were rinsed with distilled water and left to dry at room temperature. Results were compared with negative control, and biofilm formations as a layer at the internal wall of the tubes noted by the naked eye indicate a positive result.

### Antibiotic sensitivity test

Antibiotic susceptibility profiles of *E. coli* isolates were determined by the standard Kirby–Bauer disk diffusion method.<sup>20</sup> The antibiotics with their respective disk concentrations are as follows: amoxicillin–clavulanic (30 µg), carbenicillin (100 µg), cefodizime (30 µg), chloramphenicol (30 µg), gentamicin (10 µg), imipenem (10 µg), norfloxacin (10 µg), piperacillin (100 µg), rifampicin (5 µg), and pefloxacin (5 µg). Bacterial cultures suspension equivalent of 0.5 tube McFarland turbidity standards were spread on Mueller-Hinton agar plates using sterile swabs and incubated aerobically at 37°C for 24 hours, and then the diameter of inhibition zones around antibiotic disks were measured. Results were expressed susceptible or resistant according to the criteria recommended by the Clinical and Laboratory Standards Institute.<sup>21</sup>

## Plasmid DNA isolated procedure

All *E. coli* isolates were screened for plasmid content by the alkaline method of Brinboim and Doly<sup>22</sup> and separated on a 1% agarose, at 50 vol for 1 hour and 1.5 hours. The DNA bands were visualized and photographed under UV light after the gel had been stained with ethidium bromide.

## DNA purity

DNA purity was estimated by NanoDrop method (ACT gene, USA). The absorbance at 260 nm ( $A_{260}$ ) and at 280 nm ( $A_{280}$ ) for DNA was measured to check its purity. The ratio of  $A_{260}/A_{280}$  was found to be between 1.65 and 1.84.

## Results and discussion

In this study, ten *E. coli* isolates obtained from the Tigris River in Baghdad city and ten *E. coli* isolates collected from children diarrhea from Children Hospital Center in Baghdad city were tested for hemolysin production,  $\beta$ -lactamase production, biofilm formation, antibiotic sensitivity, and plasmid content.

### Latex O157:H7

Results showed that all *E. coli* isolates investigated with latex O157:H7 slide agglutination test gave a negative reaction. Chigor et al<sup>23</sup> found that rate of *E. coli* O157 in surface waters was 2.2% and its prevalence in children with diarrhea was 5.4%. Baqir et al<sup>24</sup> revealed that *E. coli* O157:H7 was isolated from four (1.14%) children with diarrhea.

### Hemolysin production

The hemolytic toxin  $\alpha$ -hemolysin belongs to the RTX toxin family<sup>25</sup> and is an important virulence factor produced by

several strains of *E. coli*. It is involved in human diseases such as urinary tract infections (UTIs), peritonitis, meningitis, and septicemia.<sup>26</sup> Results illustrated in Figure 1 showed that eight (40%) *E. coli* isolates (six isolated from river and two isolated from children diarrhea) were producing hemolysin, while the remaining 12 (60%) isolates showed  $\gamma$ -hemolysis (no hemolysis) and were considered as non-hemolysin producers. Martinez-Martinez et al<sup>27</sup> found that 56 (27.3%) of clinical *E. coli* isolates were hemolytic. Al-Chalabi<sup>28</sup> recorded that 57.1% of uropathogenic *E. coli* produced hemolysin and Abdel Rahman<sup>29</sup> revealed that 70.5% of *E. coli* isolated from chronic UTIs were hemolytic. The difference percentage of hemolysin production by *E. coli* isolates may be due to source of blood, type of hemolysin produced, source of bacteria, and screening method.

### $\beta$ -lactamase enzyme production

Extended spectrum  $\beta$ -lactamases have emerged as a major threat worldwide with limited treatment options.<sup>30</sup> The results showed that eleven (55%) *E. coli* isolates (seven isolated from river and four isolated from children diarrhea) were  $\beta$ -lactamase enzyme producers (Figure 2). This result disagreed with the result recorded by Panus et al,<sup>31</sup> who found that 21 (14.66%) aquatic *E. coli* isolates (seven isolated from drinking water and 14 from sea water) were positive for  $\beta$ -lactamase test. Results illustrated in Figure 3 showed that all *E. coli* (100%) isolates were resistant to  $\beta$ -lactam drugs, such as carbenicillin, piperacillin, cefodizime, and imipenem. In gram-negative bacteria, a variety of plasmid-determined  $\beta$ -lactamases can hydrolyze ampicillin, carbenicillin, cephalothin, and related drugs.<sup>32,33</sup> The “newer  $\beta$ -lactamases” that consist of plasmid-mediated AmpC  $\beta$ -lactamases (eg, CMY types), extended spectrum  $\beta$ -lactamase (eg, CTX-M types),

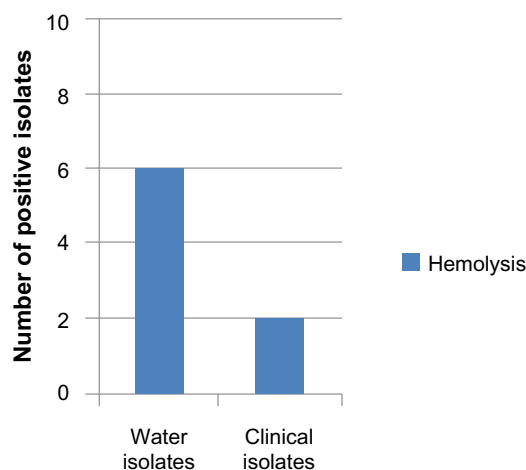


Figure 1 Number of *E. coli* isolates producing hemolysin.

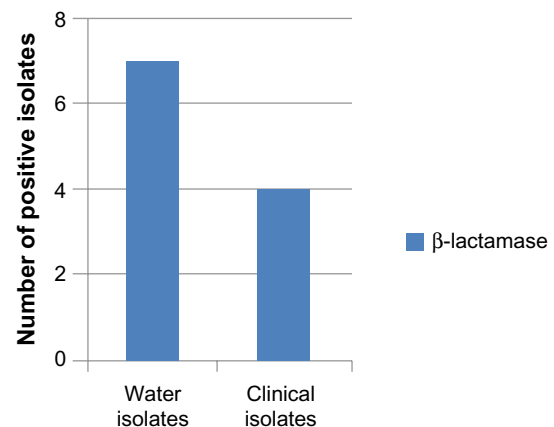


Figure 2 Number of *E. coli* isolates producing  $\beta$ -lactamase.

and carbapenemases (eg, NDM) are important causes of resistance to  $\beta$ -lactam antibiotics among extraintestinal pathogenic *E. coli*.<sup>34</sup>

## Biofilm formation

The biofilm formation is considered to be a two-step process in which the bacteria first adhere to a surface mediated by capsular antigen or flagellar antigen followed by multiplication to form a multilayered biofilm, which is associated with production of exopolysaccharide matrix. The ability of bacteria to form biofilms helps them to survive hostile conditions within host and is considered to be responsible for chronic or persistent infections.<sup>35</sup>

Five of the ten water *E. coli* isolates and two of the ten clinical *E. coli* isolates showed biofilm formation (Figure 3). Al-Chalabi<sup>28</sup> found that 90% of *E. coli* isolated from UTI were producing biofilm. There are complexities of genetic and environmental effectors of the biofilm phenotype within the species *E. coli*.<sup>36</sup>

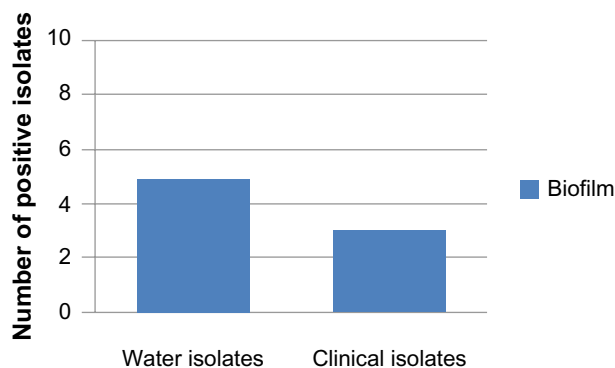


Figure 3 Number of *E. coli* isolates producing biofilm.

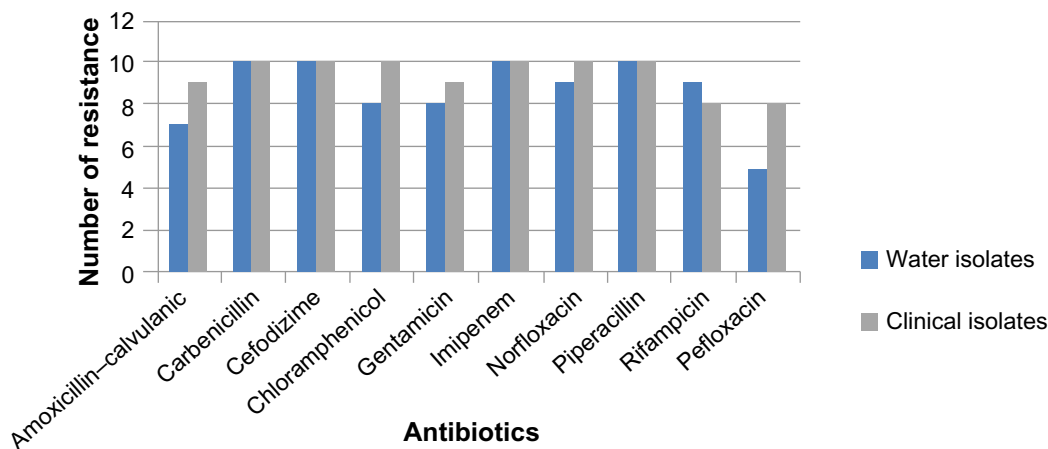


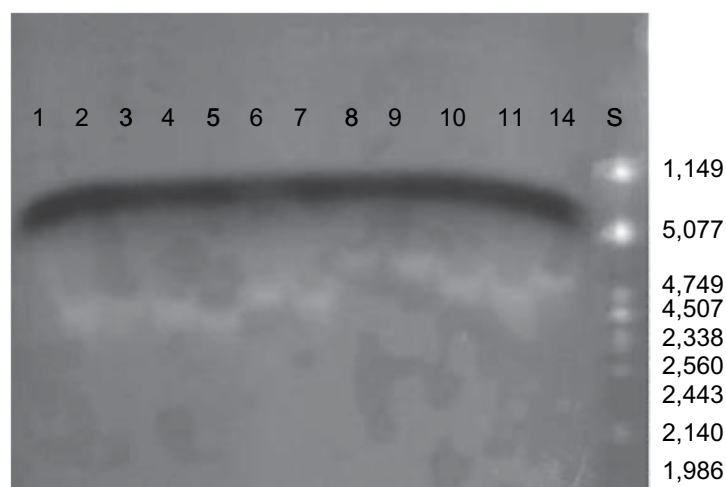
Figure 4 Number of *E. coli* isolates resistant for antimicrobial agents.

## Antibiotic sensitivity

There was a high correlation between water isolates and clinical isolates of different sources in a pattern of antibiotic resistance, which implies that the water sources might have been contaminated with mixed contaminants originating from human and animal excreta.<sup>37</sup> All *E. coli* isolates showed multidrug resistance (Figure 4). Overall resistance was most frequently observed with antibiotics carbenicillin, cefodizime, imipenem, and piperacillin (100%) for both clinical and water *E. coli* isolates; chloramphenicol showed 100% for clinical isolates and 80% for river isolates; norfloxacin showed 100% for clinical isolates and 90% for water isolates; gentamicin showed 90% for clinical isolates and 80% for water isolates; amoxicillin-calvulanic showed 90% for clinical isolates and 70% for water isolates; and pefloxacin showed 90% for clinical isolates and 50% for water isolates; water isolates showed 90% resistance to rifampicin and clinical isolates revealed 80% resistance to rifampicin. Other researchers revealed that multidrug resistance (MDR) was higher among aquatic isolates than the clinical isolates.<sup>38</sup> The presence of antibiotic-resistant bacteria in water and surface water is a subject of public health concern; this leads to a real risk factor of acquiring such bacteria from the environments.<sup>39</sup>

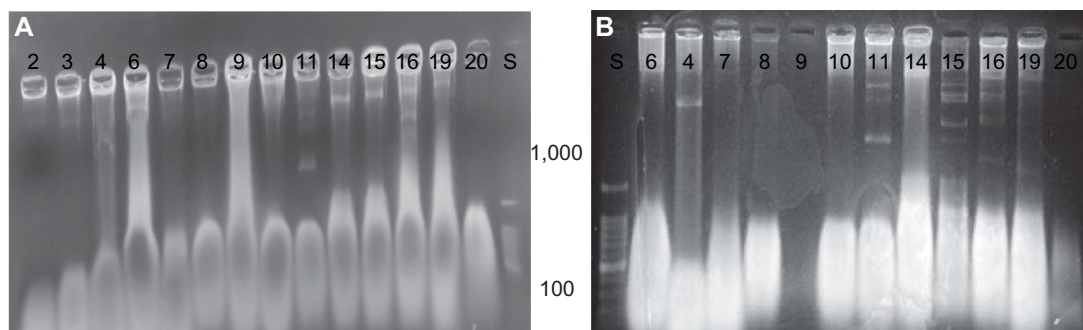
## Plasmid DNA

All *E. coli* isolates had plasmids bands that ranged from 4.507 kbp to 5.07 kbp (Figure 5). Loss of plasmids (>2.1 kbp) due to treatment with sodium dodecyl-sulfate correlated with loss of resistance to antibiotics, suggesting that the observed MDR was plasmid mediated.<sup>38</sup> Our results may be referring



**Figure 5** Agarose gel electrophoresis of plasmids extracted from various *E. coli* isolates.

**Notes:** Numbers 1–11 water isolates, 14 clinical isolates. S-ladder  $\lambda$  DNA (PstI) Kb; (1% agarose, 50 vol, 1.5 hours).



**Figure 6** Plasmids comparative results.

**Notes:** (A) Agarose 1%, 50 vol, 1 hour. (B) Agarose (1% agarose, 50 vol, 1.5 hours). Gel electrophoresis of plasmids extracted from various *E. coli* isolates. Numbers 1–11 water isolates, 14 and 21 clinical isolates. S-DNA ladder (100–1,000 bp).

to the main  $\beta$ -lactamase production and MDR to plasmids range 4.507–5.07 kbp.

Clinical isolates (Number 11–20 isolates) showed multiple plasmids more than 1,000 bp (Figure 6). These multiple copies of plasmid bands might have resulted from covalently close circular, open circular, or linear forms of the same plasmid. There are several types of *E. coli* virulence plasmids, including those essential for the virulence of enterotoxigenic *E. coli*, enteroinvasive *E. coli*, EPEC, EHEC, enteroaggregative *E. coli*, and extraintestinal pathogenic *E. coli*.<sup>40</sup> It has been suggested that special pathogenicity is due to small and large plasmids; some researcher revealed that 212.8 kbp plasmid was significantly associated with enteroinvasiveness<sup>41</sup> and EHEC carry a large plasmid (91.2 kbp) that is associated with the presence of fimbriae.<sup>8</sup>

## Disclosure

The authors report no conflicts of interest in this work.

## References

- Brooks GF, Carroll KC, Butel JS, Morse SA, Mietzner TA, Jawetz M. *Adelberg's, Medical Microbiology*. 25th ed. USA: McGraw-Hill Companies, Inc.; 2010:213–225.
- Kaper JB, Nataro JP, Mobley HLT. Pathology *Escherichia coli*. *Nat Rev Microbiol*. 2004;2:123–140.
- Blanc M, Blanco JE, Abalia L, Alonso MP, Blanco J. Virulence factors and O groups of *Escherichia coli* isolates from patients with acute pyelonephritis, cystitis and asymptomatic bacteriuria. *Eur J Epidemiol*. 1996;12:191–198.
- Wang G, Clark CG, Rodgers FG. Detection in *Escherichia coli* of the genes encoding the major virulence factors, the genes defining the O157: H7 serotype and components of the type 2 shiga toxin family by multiplex PCR. *J Clin Microbiol*. 2002;40(10):3613–3619.
- Wachsmuth K. Molecular epidemiology of bacterial infections: examples of methodology and of investigations of outbreaks. *Rev Infect Dis*. 1986;8:682–692.

6. Baldini MM, Kaper JB, Levine MM, Candy DCA, Moon HW. Plasmid-mediated adhesion in enteropathogenic *Escherichia coli*. *J Pediatr Gastroenterol Nutr*. 1983;2:534–538.
7. Nataro JP, Scaletsky ICA, Kaper JB, Levine MM, Trabulsi LR. Plasmid-mediated factors conferring diffuse and localized adherence of enteropathogenic *Escherichia coli*. *Infect Immun*. 1985;48:378–383.
8. Karch H, Heesemann J, Laufs R, O'Brien AD, Tacket CO, Levine MM. A plasmid of enterohemorrhagic *Escherichia coli* O157:H7 is required for expression of a new fimbrial antigen and for adhesion to epithelial cells. *Infect Immun*. 1987;55:455–461.
9. Sherley M, Gordon DM, Collignon PJ. Evolution of multi-resistance plasmids in Australian clinical isolates of *Escherichia coli*. *Microbiology*. 2004;150:1539–1546.
10. Woo PC, To APC, Lau SK, Yuen KY. Facilitation of horizontal transfer of antimicrobial resistance by transformation of antibiotic-induced cell-wall-deficient bacteria. *Med Hypotheses*. 2003;61(4):503–508.
11. Maniatis T, Fritsch EF, Sambrook J. *Molecular Cloning. A Laboratory Manual*. Cold Spring, USA: Cold Spring Harbor Laboratory; 1982:1–545.
12. Kruse H, Serum H. Transfer of multiple drug resistance plasmids between bacteria of diverse origins in natural environments. *Appl Environ Microbiol*. 1994;60(11):4015–4021.
13. Madigan M, Martinko J, Parker J. *Brock Biology of Microorganisms*. 10th ed. Upper Saddle River, NJ, USA: Prentice Hall; 2003.
14. Newman MC, Scheuren-Portocarrero SM. *Multiple Antibiotic Resistances: What is the Cure?* Kentucky: University of Kentucky, Courtesy of Altech Inc.; 2007.
15. Hleyn J, Bicknell M. *Microbiology Experiments: A Health Science Perspective*. 5th ed. McGraw Hill Companies, Inc.; 2007.
16. Forbes BA, Sahm DF, Weissfeld AS. *Bailey and Scotts, Diagnostic Microbiology*. 11th ed. Missouri: Mosby; 2002.
17. Senior BW, Hughes C. Production and properties of hemolysin from clinical isolates of *Proteus*. *J Med Microbiol*. 1987;24:17–25.
18. Livermore DM, Brown DFJ. Detection of  $\beta$ -lactamase-mediated resistance. *J Antimicrob Chemother*. 2001;48:59–64.
19. Christensen GD, Bisno AL, Parisi JT, McLaughlin B, Hester MG, Luther RW. Nosocomial septicemia due to multiply antibiotic resistant *Staphylococcus epidermidis*. *Ann Intern Med*. 1982;96:1–10.
20. Bauer AW, Kirby WMM, Sherris JC, Truck M. Antibiotic susceptibility testing by a standardized single disk method. *Am J Clin Pathol*. 1966;43:493–496.
21. Clinical and Laboratory Standards Institute. *Performance Standards for Antimicrobial Susceptibility Testing; Twenty-Second Informational Supplement*. CLSI Document M 100-S22. Wayne, PA: Clinical and Laboratory Standards Institute; 2012.
22. Brinboim HC, Doly J. A rapid alkaline extraction procedure for screening recombinant plasmid DNA. *Nucleic Acid Res*. 1979;7(6):1513–1523.
23. Chigor VN, Umoh VJ, Smith SI, Igbinsola EO, Okoh AI. Multidrug resistance and plasmid patterns of *Escherichia coli* O157 and other *E. coli* isolated from diarrhoeal stools and surface waters from some selected sources in Zaria, Nigeria. *Int J Environ Res Public Health*. 2010;7:3831–3841.
24. Baqir HE, Al-Hashemi AB, Althwani NA. Microbiological study of *Escherichia coli* O157:H7 isolated from bloody diarrhea in children under ten years old. *Iraqi J Sci*. 2008;49(1):90–94.
25. Coote JG. Structural and functional relationships among the RTX toxin determinants of gram-negative bacteria. *FEMS Microbiol Rev*. 1992;88:137–162.
26. Cavaliere S, Bohach GA, Synder I. *Escherichia coli* hemolysin: characteristics and probable role in pathogenicity. *Microbiol Rev*. 1984;48:326–334.
27. Martinez-Martinez L, Fernandez F, Perea EJ. Relationship between haemolysis production and resistance to fluoroquinolones among clinical isolates of *Escherichia coli*. *J Antimicrob Chemother*. 1999;43:277–279.
28. Al-Chalabi RN. Relation between hemolysin production and biofilm formation by uropathogenic *Escherichia coli*, MSc Thesis, AL-Nahrain University, Iraq, 2004.
29. Abdel Rahman MII. Study of some bacteriological and immunological parameters in chronic urinary tract infection, PhD Thesis, Al-Mustansiriyah University, Iraq, 2006.
30. Goyal A, Prasad KN, Prasad A, Gupta S, Ghoshal U, Ayyagari A. Extended spectrum  $\beta$ -lactamases in *Escherichia coli* and *K. pneumoniae* and associated risk factors. *Indian J Med Res*. 2009;129:695–700.
31. Panus E, Chifiriuc M-CB, Bucur M, et al. Virulence, pathogenicity, antibiotic resistance and plasmid profile of *Escherichia coli* strains isolated from drinking and recreational waters. In: 17th European Congress of Clinical Microbiology and Infectious Diseases and 25th International Congress of Chemotherapy; March 31, 2008–April 3, 2007.
32. Medeiros AA.  $\beta$ -Lactamases. *Br Med Bull*. 1984;40:18–27.
33. Sykes RB, Matthew M. The  $\beta$ -lactamases of gram-negative bacteria. *J Antimicrob Chemother*. 1976;2:115–157.
34. Pitout JDD. Extraintestinal pathogenic *Escherichia coli*: a combination of virulence with antibiotic resistance. *Front Microbiol*. 2012;3(9):1–7.
35. Costerton IW, Stewart PS, Greenberg EP. Bacterial biofilms: a common cause of persistent infections. *Science*. 1999;284:1318–1322.
36. Karen AK, Bjarke MK, Ellen LZ. In vitro biofilm formation of commensal and pathogenic *Escherichia coli* strains impact of environmental and genetic factors. *J Bacteriol*. 2006;188(10):3572–3581.
37. Abera A, Bahiru ESA, Ayele AK. The prevalence of antibiotic resistant *Escherichia coli* isolates from fecal and water sources. *Acad J Microbiol Res*. 2013;1(1):001–010.
38. Chigor VN, Umoh VJ, Smith SI, Igbinsola EO, Okoh AI. Multidrug resistance and plasmid patterns of *Escherichia coli* O157 and other *E. coli* isolated from diarrhoeal stools and surface waters from some selected sources in Zaria, Nigeria. *Int J Environ Res Public Health*. 2010;7:3831–3841.
39. Akturk S, Dincer S, Torogiu S. Determination of microbial quality and plasmid-mediated multidrug resistant bacteria in fountain drinking water sources in Turkey. *J Environ Biol*. 2012;33:1127–1136.
40. Johnson TJ, Nolan LK. Pathogenomics of the virulence plasmids of *Escherichia coli*. *Microbiol Mol Biol Rev*. 2009;73(4):750–774.
41. Harris JR, Wachsmuth IK, Davis BR, Cohen ML. High-molecular-weight plasmid correlates with *Escherichia coli* enteroinvasiveness. *Infect Immun*. 1982;37(3):1295–1298.

## Infection and Drug Resistance

### Publish your work in this journal

Infection and Drug Resistance is an international, peer-reviewed open-access journal that focuses on the optimal treatment of infection (bacterial, fungal and viral) and the development and institution of preventive strategies to minimize the development and spread of resistance. The journal is specifically concerned with the epidemiology of antibiotic

Submit your manuscript here: <http://www.dovepress.com/infection-and-drug-resistance-journal>

resistance and the mechanisms of resistance development and diffusion in both hospitals and the community. The manuscript management system is completely online and includes a very quick and fair peer-review system, which is all easy to use. Visit <http://www.dovepress.com/testimonials.php> to read real quotes from published authors.

Dovepress