

# Regulation of antimycin biosynthesis by the orphan ECF RNA polymerase sigma factor $\sigma^{\text{AntA}}$

Ryan F. Seipke, Elaine Patrick and Matthew I. Hutchings

School of Biological Sciences, University of East Anglia, Norwich Research Park, Norwich, United Kingdom

## ABSTRACT

Antimycins are an extended family of depsipeptides that are made by filamentous actinomycete bacteria and were first isolated more than 60 years ago. Recently, antimycins have attracted renewed interest because of their activities against the anti-apoptotic machineries inside human cells which could make them promising anti-cancer compounds. The biosynthetic pathway for antimycins was recently characterised but very little is known about the organisation and regulation of the antimycin (*ant*) gene cluster. Here we report that the *ant* gene cluster in *Streptomyces albus* is organized into four transcriptional units; the *antBA*, *antCDE*, *antGF* and *antHIJKLMNO* operons. Unusually for secondary metabolite clusters, the *antG* and *antH* promoters are regulated by an extracytoplasmic function (ECF) RNA polymerase sigma factor named  $\sigma^{\text{AntA}}$  which represents a new sub-family of ECF  $\sigma$  factors that is only found in antimycin producing strains. We show that  $\sigma^{\text{AntA}}$  controls production of the unusual precursor 3-aminosalicylate which is absolutely required for the production of antimycins.  $\sigma^{\text{AntA}}$  is highly conserved in antimycin producing strains and the  $-10$  and  $-35$  elements at the  $\sigma^{\text{AntA}}$  regulated *antG* and *antH* promoters are also highly conserved suggesting a common mechanism of regulation. We also demonstrate that altering the C-terminal Ala-Ala residues found in all  $\sigma^{\text{AntA}}$  proteins to Asp-Asp increases expression of the *antFG* and *antGHIJKLMNO* operons and we speculate that this Ala-Ala motif may be a signal for the protease ClpXP.

Submitted 25 October 2013

Accepted 7 January 2014

Published 6 February 2014

Corresponding author

Ryan F. Seipke, r.seipke@leeds.ac.uk,

Matthew I. Hutchings,

m.hutchings@uea.ac.uk

Academic editor

Valeria Souza

Additional Information and  
Declarations can be found on  
page 15

DOI 10.7717/peerj.253

© Copyright

2014 Seipke et al.

Distributed under

Creative-Commons CC-BY 3.0

**Subjects** Biochemistry, Microbiology, Molecular Biology

**Keywords** Streptomyces, Antibiotics, Secondary metabolites, Actinomycetes, Gene regulation, ECF sigma factor, Antimycin

## INTRODUCTION

Approximately 60% of the antibiotics and anticancer compounds currently used in human medicine are derived from the secondary metabolites of soil-dwelling *Streptomyces* species and other filamentous actinomycetes. Although the vast majority of these natural products were discovered more than 40 years ago, the advent of genome mining and new tools to unlock so-called “silent” pathways mean that these bacteria still offer us the best hope of developing new antibiotics for clinical use. The antimycin family of natural products were discovered nearly 65 years ago and initially attracted interest because of their potent antifungal activity (*Dunshie et al., 1949*). Antimycins are widely

## OPEN ACCESS

produced by *Streptomyces* species and they exhibit a range of bioactive properties, including antifungal, insecticidal and nematocidal activity. This is the result of their ability to inhibit cytochrome c reductase, an enzyme in the respiratory chain in bacteria and mitochondria. Antimycins are also used as piscicides (brand name Fintrol®) to kill off unwanted scaled fish in the farming of catfish, which are relatively insensitive to antimycins (Finlayson *et al.*, 2002). More recently antimycins have been shown to be potent and selective inhibitors of the mitochondrial Bcl-2/Bcl-x<sub>L</sub>-related anti-apoptotic proteins which are over-produced by drug resistant cancer cells. Over-production of Bcl-2/Bcl-x<sub>L</sub> proteins in cancer cells confers resistance to multiple chemotherapeutic agents whose primary mode of action is to trigger apoptosis. Antimycins bind to the hydrophobic groove of Bcl-2-type proteins and inhibit their activity in a mechanism of action that is independent of their activity against electron transport (Tzung *et al.*, 2001). A synthetic derivative of antimycin A<sub>3</sub>, 2-methoxyantimycin A<sub>3</sub> (2-MeAA), no longer inhibits the respiratory chain, but retains potent antagonistic activity toward Bcl-2-related proteins and induces apoptosis (Tzung *et al.*, 2001; Schwartz *et al.*, 2007). This has led to suggestions that antimycin derivatives such as 2-MeAA could be used alongside traditional apoptosis-inducing chemotherapeutics to block drug resistance and kill cancer cells. There is significant interest in bioengineering antimycins with improved pharmacological properties for the treatment of cancer and infectious diseases.

Despite their unique chemical structure and important biological properties, the antimycin biosynthetic pathway was only reported very recently (Seipke *et al.*, 2011a, Seipke *et al.*, 2011b) and rapid progress has been made in elucidating the biosynthetic steps in this pathway over the last two years (for a recent review see Seipke & Hutchings, 2013). Antimycins are produced by a hybrid non-ribosomal peptide synthetase (NRPS)/polyketide synthase (PKS) assembly line for which the complete biosynthetic pathway has been proposed (Sandy *et al.*, 2012; Yan *et al.*, 2012). The AntFGHIJKLN proteins encode the biosynthetic pathway for the unusual starter unit, 3-aminosalicylate-CoA (Schoenian *et al.*, 2012; Sandy *et al.*, 2012). The AntCD proteins comprise the hybrid NRPS/PKS machinery, and AntE and AntM are crotonyl-CoA reductase and discrete ketoreductase homologues, respectively (Sandy *et al.*, 2012). AntO and AntB are tailoring enzymes. AntO is predicted to install the *N*-formyl group (Yan *et al.*, 2012; Sandy *et al.*, 2012), and AntB is a promiscuous acyltransferase that catalyses a transesterification reaction of a hydroxyl group at C-8 to result in the acyloxyl moiety and the chemical diversity observed at R1 (Sandy *et al.*, 2013). The *antA* gene encodes an extracytoplasmic function (ECF) RNA polymerase sigma ( $\sigma$ ) factor named  $\sigma^{\text{AntA}}$  which, like all other ECF  $\sigma$  factors, contains only two of the four  $\sigma^{70}$  domains (Staron *et al.*, 2009).

The resurgence of interest in the biosynthesis of antimycins and particularly in engineering new analogues with better pharmacological properties led us to investigate the transcriptional organisation and regulation of the antimycin gene cluster. The only regulator encoded by the *ant* gene cluster is  $\sigma^{\text{AntA}}$ , but regulation of secondary metabolite clusters by ECF  $\sigma$  factors is unusual and has not yet been reported in

*Streptomyces* species. To our knowledge only two examples of ECF  $\sigma$  factor regulation of antibiotic biosynthesis have been described and both differ from  $\sigma^{\text{AntA}}$  because they are co-encoded with, and regulated by, anti- $\sigma$  factors whereas  $\sigma^{\text{AntA}}$  is an orphan, i.e., it has no co-encoded anti- $\sigma$  factor. The two known examples both control lantibiotic production in rare actinomycetes. In *Microbospira corallina*, the pathway specific regulator MibR and the ECF  $\sigma^{\text{MibX}}$  regulate microbisporicin biosynthesis and  $\sigma^{\text{MibX}}$  is regulated by MibW (Foulston & Bibb, 2010). In *Planomonospora alba* the pathway specific regulator PspR, the ECF sigma factor  $\sigma^{\text{PspX}}$  and its anti- $\sigma$  factor PspW all regulate production of the lantibiotic planosporicin (Sherwood & Bibb, 2013). The closest homologues to  $\sigma^{\text{MibX}}$  and MibW are  $\sigma^{\text{PspX}}$  and its anti- $\sigma$  factor PspW, suggesting a common mechanism of regulation for these lantibiotics.

Here we characterize the gene organization of the antimycin gene cluster and the role of  $\sigma^{\text{AntA}}$  in *Streptomyces albus* S4. We report that  $\sigma^{\text{AntA}}$  is regulated at the transcriptional level and controls production of the unusual precursor 3-aminosalicylate that is required for antimycin production. We also show that  $\sigma^{\text{AntA}}$  represents a new sub-family of ECF  $\sigma$  factors that are only found in the *ant* gene clusters of *Streptomyces* species and provide evidence that suggests  $\sigma^{\text{AntA}}$  regulation of the divergent *antGF* and *antHIJKLMNO* operons is conserved in all antimycin producing strains. Finally we provide preliminary evidence that the activity of  $\sigma^{\text{AntA}}$  is affected by the two C-terminal amino acid residues such that altering the natural Ala-Ala residues to Asp-Asp increases expression of the  $\sigma^{\text{AntA}}$  target genes. Since a C-terminal Ala-Ala motif is a well known signal for the serine protease ClpXP (Flynn et al., 2003) this may provide a novel post-translational mechanism for controlling  $\sigma^{\text{AntA}}$  activity without the need for an anti- $\sigma$  factor.

## MATERIALS AND METHODS

**Growth media and strains.** *Streptomyces* strains (Table 1) were grown on mannitol-soya flour (MS) agar and Lennox broth (LB) (Kieser et al., 2000), and *Escherichia coli* strains (Table 1) were grown on LB or LB agar. Growth media was supplemented with antibiotics as required at the following concentrations: apramycin (50  $\mu\text{g/ml}$ ), carbenicillin (100  $\mu\text{g/ml}$ ), hygromycin B (50  $\mu\text{g/ml}$ ), kanamycin (50  $\mu\text{g/ml}$ ), nalidixic acid (50  $\mu\text{g/ml}$ ). All *Streptomyces* strains were created using cross-genera conjugation in which DNA was transferred from *E. coli* ET12567/pUZ8002 (MacNeil et al., 1992) according to standard methods (Kieser et al., 2000).

**Cosmid library construction and screening.** A Supercos1 cosmid library was constructed from *Streptomyces albus* S4 genomic DNA partially digested with Sau3AI and packaged into Gigapack III XL phage according to the manufacturer's instructions (Agilent Technologies). One thousand cosmid clones were screened by PCR using primers RFS172 and RFS173 (Table S2), which target an internal fragment of the *antC* gene. Cosmid 456 and cosmid 213 tested positive and were end-sequenced using primers RFS184 and RFS185 (Table S2) and mapped onto the *Streptomyces albus* S4 genome using BLAST 2.2.23+ (Altschul et al., 1990).

**Table 1** Strains, cosmids and plasmids used in this study.

Strain		Reference
S4	Wild type <i>Streptomyces albus</i> S4	Barke et al., 2010
S4 $\Delta antA$	S4 <i>antA</i> null mutant; Apr <sup>R</sup>	This study
S4 <i>antA attB</i> $\Phi BT1::pIJ10257-antA$	Complemented <i>antA</i> null mutant; <i>antA</i> transcription driven by the <i>ermE*</i> promoter; Apr <sup>R</sup> , Hyg <sup>R</sup>	This study
S4 $\Delta antA attB$ $\Phi BT1::pAU3-45-antA-AA$	Complemented <i>antA</i> null mutant; <i>antA</i> driven its native promoter; Apr <sup>R</sup> Tsp <sup>R</sup>	This study
S4 $\Delta antA attB$ $\Phi BT1::pAU3-45-antA-DD$	Complemented <i>antA</i> null mutant with mutations A172D A173D with <i>antA</i> driven its native promoter; Apr <sup>R</sup> Tsp <sup>R</sup>	This study
S4 $\Delta antC$	S4 <i>antC</i> null mutant; Apr <sup>R</sup>	This study
S4 $\Delta STRS4\_02194$	S4 <i>STRS4\_02194</i> null mutant; Apr <sup>R</sup>	This study
S4 $\Delta STRS4\_02195$	S4 <i>STRS4\_02195</i> null mutant; Apr <sup>R</sup>	This study
S4 $\Delta STRS4\_02212$	S4 <i>STRS4\_02212</i> null mutant; Apr <sup>R</sup>	This study
S4 $\Delta STRS4\_02213-02217$	S4 <i>STRS4\_02213-02217</i> null mutant; Apr <sup>R</sup>	This study
<i>Escherichia coli</i>		
BL21	Host for heterologous protein expression	Novagene
BW25113	Host for REDIRECT PCR targeting system	Gust et al., 2003
DHM1	Host for Cya bacterial two hybrid system	Karimova et al., 1998
ET12567	Non-methylating host for transfer of DNA into <i>Streptomyces</i> spp. ( <i>dam</i> , <i>dcm</i> , <i>hsdM</i> ); Cam <sup>R</sup>	MacNeil et al., 1992
TOP10	General cloning host	Invitrogen
VCS257	Host strain for Gigapack III XL phage	Agilent Technologies
Cosmids		
Supercos1	Cosmid backbone for <i>S. albus</i> S4 cosmids; Amp <sup>R</sup> , Kan <sup>R</sup>	Stratagene
Cosmid 213	Supercos1 derivative containing the entire antimycin gene cluster; Amp <sup>R</sup> , Kan <sup>R</sup>	This study
Cosmid 213 $\Delta antB$ -flp	Cosmid 213 derivative containing an 81 bp scar in place of the <i>antB</i> gene	This study
Cosmid 456	Supercos1 derivative containing a portion of the antimycin gene cluster; Amp <sup>R</sup> , Kan <sup>R</sup>	This study
Plasmids		
pCRII-TOPO	Cloning vector for PCR products; Amp <sup>R</sup> , Kan <sup>R</sup>	Invitrogen
pAU3-45	pSET152 derivative, integrates into $\Phi C31$ <i>attB</i> site in <i>Streptomyces</i> ; Apr <sup>R</sup> Tsp <sup>R</sup>	Bignell et al., 2005
pAU3-45- <i>antA</i> -AA	pAU3-45 derivative containing the <i>antA</i> gene, an 81 bp 'scar' in place of <i>antB</i> , and 270 bp upstream of <i>antB</i> cloned into the EcoRI site	This study
pAU3-45- <i>antA</i> -DD	pAU3-45 derivative containing the <i>antA</i> gene encoding A172D and A173D mutations, an 81 bp 'scar' in place of <i>antB</i> , and 270 bp upstream of <i>antB</i> , cloned into the EcoRI site	This study
pET28a	Protein expression vector; Kan <sup>R</sup>	Novagene
pET28a- <i>antA</i>	pET28a derivative containing the <i>antA</i> coding sequence cloned into the NdeI and HindIII sites	This study
pGEM-T Easy	Cloning vector for PCR products; Amp <sup>R</sup>	Promega
pIJ773	PCR template for <i>aac3(IV)+ oriT</i> cassette used in REDIRECT PCR targeting system	Gust et al., 2003
pIJ790	Encodes lambda RED recombination machinery induced by arabinose; Cam <sup>R</sup>	Gust et al., 2003
pIJ10700	PCR template for <i>hygR</i> cassette used in REDIRECT PCR targeting system	Gust et al., 2003b
pIJ10257	pMS81 derivative containing <i>ermE*</i> p, integrates into the $\Phi BT1$ <i>attB</i> site in <i>Streptomyces</i> ; Hyg <sup>R</sup>	Hong et al., 2005
pIJ10257- <i>antA</i>	pIJ10257 derivative containing the <i>antA</i> coding sequence cloned into the NdeI-HindIII sites	This study
pUZ8002	Encodes conjugation machinery for mobilization of plasmids from <i>E. coli</i> to <i>Streptomyces</i> ; Kan <sup>R</sup>	MacNeil et al., 1992

**Notes.**

Amp, ampicillin; Apr, apramycin; Hyg, hygromycin; Kan, kanamycin; Cam, chloramphenicol.



*Construction of Streptomyces albus S4 mutant strains.* Mutant strains were constructed using  $\lambda$ -RED based PCR-targeting mutagenesis (Gust et al., 2003). A disruption cassette consisting of a conjugal origin of transfer (*oriT*) and the apramycin resistance gene, *aac(3)IV* from pIJ773 (Gust et al., 2003), was generated by PCR using BioTaq polymerase (Biolone) and oligonucleotide primers (Table S2) containing 39 nt of homology that included the start and stop codons of each gene (with the exception of the STRS4\_02213-02217 multi-mutant) and 36 nt upstream or downstream of the open reading frame. The resulting PCR products were gel purified and electroporated into *E. coli* BW25113/pIJ790 harboring either cosmid 456 ( $\Delta$ STRS4\_02194,  $\Delta$ STRS4\_02195,  $\Delta$ antA,  $\Delta$ antC) or cosmid 213 ( $\Delta$ STRS4\_02222,  $\Delta$ STRS4\_02213-STRS4\_02217). Transformants were screened for the presence of mutagenised cosmid by *NotI* digestion. Mutagenised cosmids were moved to *S. albus* S4 by conjugation. Transconjugants were selected for apramycin resistance and kanamycin sensitivity. The integrity of mutant strains was verified by PCR using flanking primers for each deleted coding sequence together and in combination with the P1 and P2 primers which target the apramycin cassette (Gust et al., 2003). Combinations RRF228 and 229, RRF278 and 279 and RRF329 and 330 were used to test the 02194, 02195 and 02212 knockouts, respectively (Table S2).

*Construction of plasmids.* In order to heterologously express and purify AntA, the *antA* coding sequence was PCR-amplified from genomic DNA using oligonucleotide primers engineered to possess *NdeI* and *HindIII* restriction sites (RFS230 and RFS 231, Table S2) using Phusion polymerase (New England Biolabs). The resulting PCR product was gel purified and digested with *NdeI* and *HindIII* (Roche) and ligated with pET28a (Novagene) cut with the same enzymes using T4 DNA ligase (Promega) to create pET28a-*antAI*. DNA sequencing using the T7 promoter and T7 terminator primers (Novagene) verified the integrity of the cloned *antA* coding sequence. In order to construct the *antA* over-expression/complementation plasmid, pIJ10257-*antA*, the *antA* coding sequence was excised from pET28a-*antA* using *NdeI* and *HindIII* and ligated to pIJ10257 (Hong et al., 2005) cut with the same enzymes. pIJ10257-*antA* was introduced into *Streptomyces* strains by conjugation and transconjugants were selected for resistance for hygromycin.

In order to generate complementation constructs in which transcription of wild-type and mutated *antA* was initiated by its native promoter, we replaced the *antB* gene with an apramycin resistance cassette using the REDIRECT system described above using oligos RFS188 and RFS189 (Gust et al., 2003, Table S2). The apramycin cassette possesses two FRT sites recognised by the FLP recombinase. The mutagenised cosmid was introduced into *E. coli* strain BT340, which expresses a FLP recombinase when cultured at 42°C (Gust et al., 2003). FLP recombinase-mediated excision of the apramycin resistance cassette leaves an 81 bp in-frame “scar.” Cosmid 213  $\Delta$ *antB-flp* was used as template for PCR with the forward primer RFS351 and the reverse primers RFS231 or RFS352 (Table S2). RFS351 targets 270 bp upstream of the putative *antB* start codon, and RFS231 and RFS352 both target an identical sequence in the C-terminus of *antA*, with the exception that RFS352 introduces two C  $\rightarrow$  A point mutations, which introduces A172D and

A173D changes into the resulting AntA protein. These PCR products were cloned into pGEMT-Easy (Promega) and verified by DNA sequencing using M13R and M13F oligonucleotides. Next, the *antA*-containing inserts were excised from pGEMT-Easy by EcoRI digestion and ligated with pAU3-45 (Bignell *et al.*, 2005) digested with the same enzyme. pAU3-45-*antA*-AA and pAU3-45-*antA*-DD were introduced into *Streptomyces* strains by conjugation and transconjugants were selected for resistance to thiostrepton. **Phylogenetic analysis.** Antimycin gene clusters were analysed from *S. ambofaciens* ATCC 23877 (AM238663, (Choulet *et al.*, 2006)), *S. blastmyceticus* NBRC 12747 (AB727666, (Yan *et al.*, 2012)), *S. gancidicus* BKS 13-15 [AOHP00000000, (Kumar *et al.*, 2013)], *S. griseoflavus* Tü4000 (ACFA00000000), *S. hygroscopicus* subsp. *jinggagensis* 5008 (NC\_017765), *S. hygroscopicus* subsp. *jinggagensis* TL01 (NC\_020895), *Streptomyces* sp. 303MFC05.2 (ARTR00000000), *Streptomyces* sp. TOR3209 (AGNH00000000, (Hu *et al.*, 2012)), *S. albus* S4 (CADY00000000, (Seipke *et al.*, 2011b)), *S. albus* J1074 (NC\_020990), *Streptomyces* sp. SM8 (AMPN00000000), *Streptomyces* sp. NRRL2288 (JX131329), (Yan *et al.*, 2012)), *Streptomyces* sp. LaPpAH-202 (ARDM00000000), *Streptomyces* sp. CNY228 (ARIN01000033).  $\sigma^{\text{AntA}}$  proteins were aligned to five (when possible) random proteins from each ECF RNA polymerase  $\sigma$  factor subfamily defined by Staron *et al.* (Staron *et al.*, 2009) by using Clustal (Sievers *et al.*, 2011). The phylogenetic tree was created using PhyML 3.0 with the default settings (Guindon *et al.*, 2010) and visualised using FigTree v1.4 (<http://tree.bio.ed.ac.uk/software/figtree/>).

**HPLC analysis.** Wild-type and mutant strains were cultured atop a cellophane disc on MS agar. At the time of harvest, the cellophane disc containing mycelia was removed and either processed for RNA extraction (below) or discarded. Bacterial metabolites were extracted from the spent agar using 50 ml of ethyl acetate for 1 h. 20 ml of ethyl acetate was evaporated to dryness under reduced pressure and the resulting residue was resuspended in 400  $\mu$ l 100% methanol. In all cases, the methanolic extracts from at least two biological replicates were mixed and centrifuged at > 16,000 g in a microcentrifuge prior to analysis. Antimycin A<sub>1</sub>–A<sub>4</sub> standards were purchased from Sigma-Aldrich. 35  $\mu$ l of methanolic extract was separated on a Phenomenex C18(2) 5  $\mu$ m 4.6  $\times$  150 mm using a Hitachi L-6200 HPLC system and the following gradient (solvent A: water, solvent B: methanol, flow rate 1 ml/min): 0–20 min, 10–100% B; 20–34 min 100% B; 34.1–44 min, 10% B. Samples were analysed with a Shimadzu M20A Photo Diode Array.

**RNA analysis.** For all experiments involving RNA, *S. albus* S4 strains were cultivated at 30°C on MS agar atop a cellophane disc to facilitate the easy harvest of mycelia into microcentrifuge tubes. Transcription was arrested using a stop solution (95% ethanol, 5% acid phenol) diluted 1:4 with water. Total RNA was extracted using a RNeasy Mini Kit (Qiagen) according to the manufacturer's instructions and included both an on-column and a post-column DNaseI treatment. The absence of DNA contamination was assessed by PCR. DNase-treated RNA was reverse transcribed using 250  $\mu$ g of random hexamers and Superscript III reverse transcriptase (RT, Invitrogen) with an extension temperature of 55°C.

For co-transcription analysis, twenty-nine cycles of PCR amplification with six primer sets (Table S2) were performed using cDNA originating from 5  $\mu$ g of RNA with BioTaq Polymerase (Bioline). Primer sets were designed to span the intergenic regions of the antimycin cluster and targeted at least 300 bp upstream of putative start codons to account for promoters driving transcription from multiple sites within a transcriptional unit. RNA from the complemented *antA* mutant strain ( $\Delta antA/pIJ10257-antA$ ) was used, because transcript abundance was greater for operons involved in 3-aminosalicylate biosynthesis. The PCR products obtained were cloned into either pCRII-TOPO (Invitrogen) or pGEM-T Easy (Promega) and sequenced by either the Genome Analysis Centre (Norwich, UK), Source BioScience (Cambridge, UK), or Eurofins MWG Operon (Ebersberg, Germany) using oligonucleotide primer M13r (Integrated DNA Technologies).

For quantitative RT-PCR, gene-specific primers were designed to amplify  $\sim$ 100 bp from the first and last gene of each transcriptional unit in the antimycin cluster. cDNA was diluted (1 volume of cDNA to 2 volumes of water) and target genes were quantified using a Bio-Rad CFX96™ instrument and SensiFast™ SYBR No-ROX kit (Bioline). Each treatment consisted of three biological replicates and two technical replicates. The calculated *Ct* (threshold cycle value) for each target gene was normalized to the *Ct* obtained for the *hrdB* gene, which encodes the vegetative sigma factor and is routinely used as a reference gene for transcriptional analyses (Kelemen et al., 1996).

For mapping of transcriptional start sites, 10  $\mu$ g of RNA from the  $\Delta antA/pIJ10257-antA$  strain was processed using the FirstChoice® RLM-RACE Kit (Ambion) according to the manufacturer's instructions with the following modifications: for cDNA synthesis, Superscript III RT (Invitrogen) was used according to the manufacturer's instructions using an extension temperature of 55°C. The gene-specific primers used for each transcriptional unit are listed in Table S2. The final PCR products were gel purified and cloned into pCRII-TOPO (Invitrogen) or pGEM-T Easy (Promega) and sequenced using oligonucleotide primers M13r (Integrated DNA Technologies) by either the Genome Analysis Centre (Norwich, UK), Source BioScience (Cambridge, UK) or Eurofins MWG Operon (Ebersberg, Germany). The transcriptional start site was determined to be the nucleotide immediately adjacent to the sequence of the 5'RLM-RACE RNA adapter.

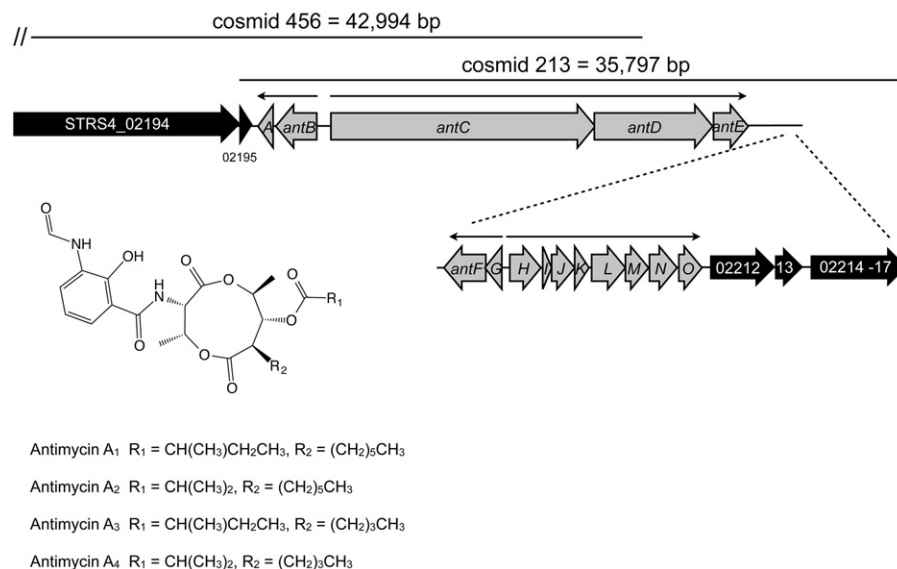
**Bacterial two-hybrid analysis.** The full STRS4\_02195, *AntA*, and STRS4\_04339 (*SigB* orthologue) coding sequences were PCR-amplified from S4 genomic DNA using Phusion Polymerase (New England Biolabs) and primers RFS280 and RFS281 (*STRS4\_02195*), RFS282 and RFS283 (*antA*), and *sigB* (RFS284 and RFS285) (Table S1). The gel purified PCR products were digested with BamHI and KpnI (Roche) and cloned into bacterial two-hybrid plasmids pUT18C and pKT25 (Karimova et al., 1998) cut with the same enzymes. Cloned inserts were sequenced by The Genome Analysis Centre (Norwich, UK) using primers RFS286, RFS287 (pUT18C clones) and RFS288 and RFS289 (pKT25 clones) to ensure that no mutations had occurred. Plasmid combinations of interest were co-electroporated into *E. coli* DHM1 and processed for  $\beta$ -galactosidase activity as previously described (Hutchings et al., 2002).

## RESULTS AND DISCUSSION

### Organisation and expression of the antimycin gene cluster

To facilitate mutagenesis of the antimycin gene cluster, we constructed a Supercos1 library of the *S. albus* S4 genome (Genbank accession CADY00000000.1) and screened the library by PCR against an internal fragment of *antC*. We identified two overlapping cosmids containing *antC* and confirmed that cosmid 213 contains the complete predicted *ant* gene cluster by deleting genes adjacent to the cluster using PCR-targeted mutagenesis (Fig. 1). To define the upstream border we deleted *STRS4\_02194*, which encodes a separate NRPS and *STRS4\_02195* which encodes a predicted membrane protein of unknown function. To determine the downstream border we deleted *STRS4\_02212* and *STRS4\_02214-STRS4\_02217* which are predicted to encode a nitrate/nitrite assimilation protein and an ABC-transport system, respectively. To determine if these mutations affect antimycin production we performed bioassays against the human pathogen *Candida albicans* and observed no obvious difference in the ability of the *S. albus* S4 strains to inhibit the growth of *C. albicans* compared to wild-type (Fig. 2A). High performance liquid chromatography (HPLC) confirmed that antimycin production is not affected by any of these mutations showing that *STRS4\_02194*, *STRS4\_02195*, *STRS4\_02212*, and *STRS4\_02214-02217* mark the boundaries of the *ant* gene cluster (Fig. 2B). The gene organization of the *ant* cluster suggests there is a minimum of four transcriptional units with the largest being the *antHIJKLMNO* operon (Fig. 1). Almost all of these ORFs overlap, suggesting transcriptional and translational coupling, but as a proof of principle we confirmed that the *antGF* and *antHIJKLMNO* genes are co-transcribed by performing end-point RT-PCR. Six primer pairs were designed to span the intergenic (or overlapping gene) regions of the *antGF* and *antHIJKLMNO* operons and targeted at least 300 bp upstream of the putative start codons to detect transcriptional read-through. Six PCR products were obtained by RT-PCR analysis and sequenced to confirm that *antGF* and *antHIJKLMNO* form two operons. No products were obtained when reverse transcriptase was omitted (Fig. S1). In addition to confirming that *antGF* and *antHIJKLMNO* are organized into operons, this also validates our approach to analysing their expression using qRT-PCR to measure mRNA levels of the first and last genes in each operon.

*Streptomyces* species have a complex life cycle that includes growth as a substrate mycelium that gives rise to aerial mycelia and sporulation. To determine at which stage of the life cycle the antimycin gene cluster is expressed we measured expression of the four *ant* operons after 18 and 42 h growth on mannitol-soya flour (MS) agar. After 18 h growth on MS agar *S. albus* S4 consists entirely of substrate mycelium but after 42 h the substrate mycelium has differentiated to produce aerial mycelium and spores. All four *ant* operons are expressed at a significantly higher level at 18 h (in substrate mycelium) compared to 42 h which suggests that all four *ant* operons are switched off following differentiation (Fig. 3A). Conversely, HPLC analysis of mycelium and culture medium extracted at the same time points only detected antimycins in the 42 h samples suggesting there is a lag between *ant* gene expression and antimycin production (Fig. 3B). This is



**Figure 1** The antimycin biosynthetic gene cluster in *Streptomyces albus* S4. Genes shaded grey indicate those that are required for antimycin biosynthesis. Genes shaded black were experimentally determined not to be required for antimycin biosynthesis. Narrow black arrows indicate the presence of four operons and the direction of their transcription. The locations of cosmid 213 and cosmid 456 are indicated by horizontal lines and the double vertical hash indicates that cosmid 456 is comprised of additional DNA that falls outside the boundaries of this schematic.

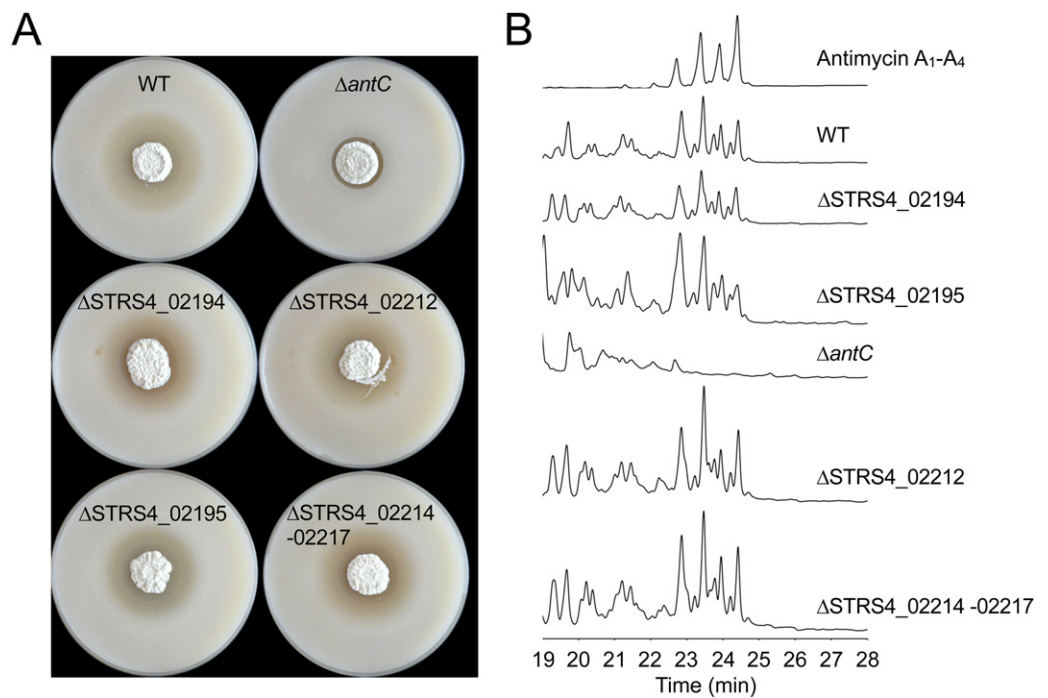
probably due to the time it takes for the precursor to be produced and for the antimycin scaffold to be assembled and then accumulate to detectable levels. Most notably, these data suggest that specific regulatory mechanisms exist to activate *ant* gene expression in substrate mycelium and switch it off again following differentiation. Since *antA* is the only putative regulatory gene in the *ant* gene cluster we investigated the role of  $\sigma^{\text{AntA}}$  in regulating antimycin production.

### Antimycin production is dependent on the orphan ECF sigma factor $\sigma^{\text{AntA}}$

To investigate the role of  $\sigma^{\text{AntA}}$  in regulating antimycin biosynthesis, we deleted the *antA* gene and tested the mutant strain against *C. albicans* in a bioassay. The *antA* mutant is significantly less active against *C. albicans* compared to wild-type and this is consistent with loss of antimycin production (Seipke et al., 2011a). Complementation of this mutant with the *antA* gene under the control of the strong constitutive *ermE*<sup>\*</sup> promoter restores bioactivity against *C. albicans* to wild-type levels (Fig. 4A) and HPLC analysis confirmed that antimycins are not produced by the *antA* mutant (Fig. 4B). We conclude that  $\sigma^{\text{AntA}}$  is required for antimycin production.

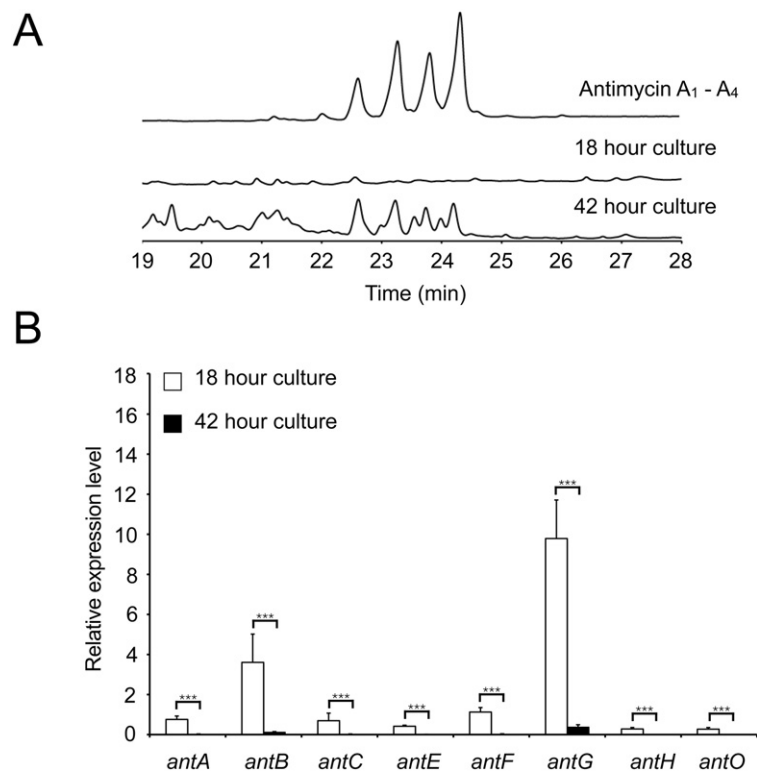
To determine which of the four *ant* promoters are regulated by  $\sigma^{\text{AntA}}$  we used qRT-PCR to measure *ant* operon expression in the wild-type and *antA* strains grown for





**Figure 2** Defining the boundaries of the antimycin gene cluster. (A) *Streptomyces albus* S4 WT and mutant strains challenged with *Candida albicans*. Null mutants of genes adjacent to the gene cluster (coloured black in Fig. 1) produce an antimycin-positive phenotype, characterised by a large circular zone of cleared *C. albicans* growth. The  $\Delta antC$  mutant strain displays an antimycin-negative phenotype, but retains residual antagonistic activity against *C. albicans* due to the production of candicidin, a second antifungal compound produced by this strain (Barke et al., 2010; Seipke et al., 2011a). (B) High-performance liquid chromatography (HPLC) of metabolites produced by *S. albus* S4 WT and mutant strains. The  $\Delta antC$  mutant does not produce antimycins, while null mutations in genes adjacent to the antimycin cluster had no effect on antimycin production.

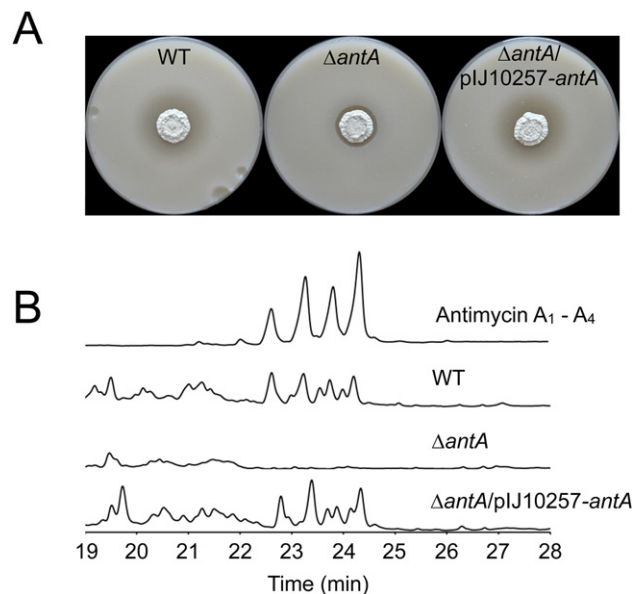
18 h on MS agar. Deletion of *antA* did not affect the level of transcription of either the *antBA* or *antCDE* operons, but transcription of both the *antGF* and *antHIJKLMNO* operons was significantly reduced in the *antA* mutant (Fig. 5). This suggests that  $\sigma^{AntA}$  positively regulates the transcription of the *antFGHIJKLMNO* genes which encode biosynthesis of 3-aminosalicylate, the precursor used by the AntC NRPS. Furthermore, over-expression of  $\sigma^{AntA}$  in 42 h cultures activates the expression of the *antGF* and *antHIJKLMNO* operons leading us to conclude that no additional regulators are required to activate the *antG* and *antH* promoters (Fig. 6). In addition the *antB* and *antC* promoters must be regulated by a transcription factor encoded outside of the *ant* gene cluster since they are upregulated at 18 h relative to 42 h growth. To confirm this we introduced cosmid 213 into *S. lividans*, *S. coelicolor* M145 and the *S. coelicolor* superhost strains M1146, M1152 and M1154 (Gomez-Escribano & Bibb, 2011) but failed to detect antimycin production, supporting the idea that at least one additional transcription activator is required.



**Figure 3** There is a delay between expression of the antimycin biosynthetic genes and the production of antimycins. (A) HPLC analysis of metabolites produced by *S. albus* S4 wild-type. Antimycins are detected in media extracts of 42 h old but not 18 h old cultures. (B) qRT-PCR analysis of the antimycin gene cluster in 18 and 42 h old cultures shows that expression of the antimycin gene cluster is significantly down-regulated following differentiation. \*\*\* denote that values reported are statistically significantly different with a *P* value < 0.001 in a Student's T-test.

### $\sigma^{\text{AntA}}$ and its putative binding site are highly conserved

Bioinformatic analysis failed to identify the common ECF  $\sigma$  factor promoter motifs upstream of the *antG* and *antH* genes, notably the “AAC” motif in the –35 region and the “CGT” motif in the –10 region (Staron *et al.*, 2009). We therefore mapped the transcriptional start sites of the *antGF* and *antHIJKLMNO* operons using 5'-RLM RACE and identified –10 and –35 regions which share high nucleotide sequence identity with one another, but not with the  $\sigma^{\text{AntA}}$ -independent *antB* promoter (Fig. 7A). Six antimycin producing *Streptomyces* strains have been reported previously (Riclea *et al.*, 2012; Seipke *et al.*, 2011a; Yan *et al.*, 2012) and we identified eight more putative antimycin gene clusters whilst searching for  $\sigma^{\text{AntA}}$  orthologues in Genbank (Table S1 and Experimental Procedures). Since the 14 known  $\sigma^{\text{AntA}}$  orthologues share 66% sequence identity (Table S1, Fig. S2), we hypothesise that  $\sigma^{\text{AntA}}$  regulation of the *antG* and *antH* promoters will be common to all antimycin producing *Streptomyces* strains. To investigate this, we searched for the *antG* and *antH* promoter motifs in the 14 known or predicted antimycin gene clusters encoded by published *Streptomyces* genome sequences. All 14 *antG* promoters

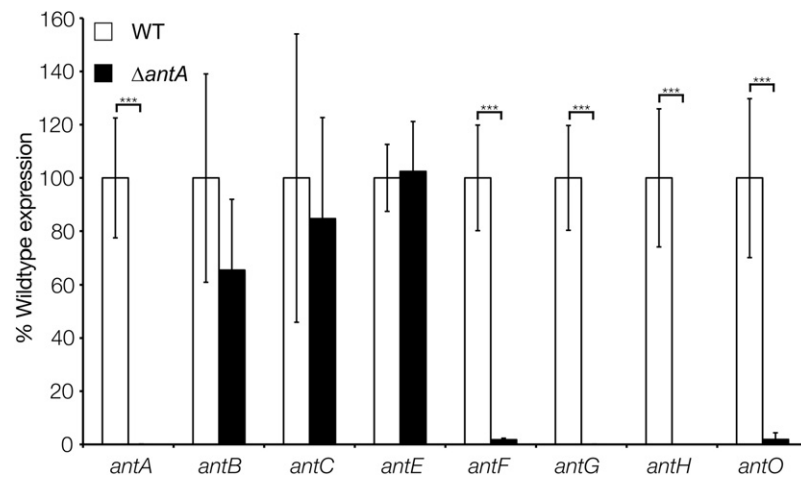


**Figure 4**  $\sigma^{AntA}$  is required for the biosynthesis of antimycins. (A) *S. albus* S4 strains challenged with *Candida albicans*. The  $\Delta antA$  null mutant shows dramatically reduced bioactivity compared to the wild-type strain and the complemented strain ( $\Delta antA/pIJ10257-antA$ ). The residual bioactivity of the  $\Delta antA$  mutant is due to the continued production of candidicin, a second antifungal compound. (B) HPLC analysis of metabolites produced by *S. albus* S4 strains. Antimycins were only detected in extracts prepared from the wild-type and the  $\Delta antA/pIJ10257-antA$  strains, and not the  $\Delta antA$  null mutant.

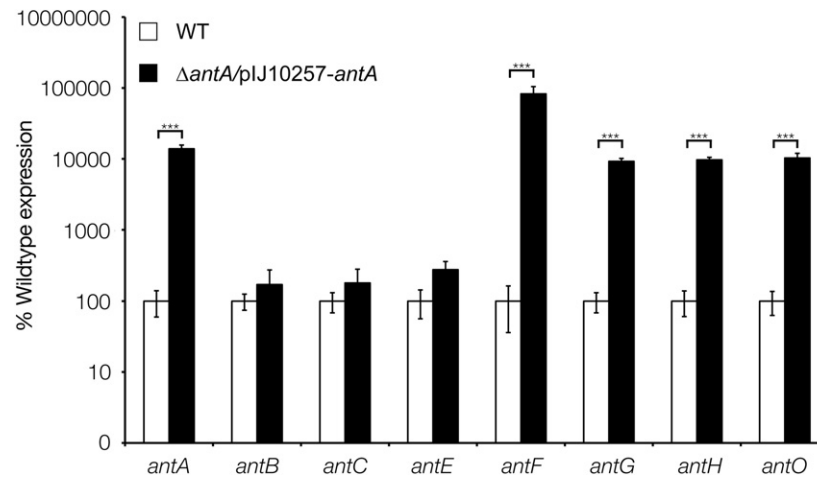
contain very high sequence identity in the  $-35$  and  $-10$  regions, although *S. ambofaciens* has an 18 nucleotide spacer between the  $-35$  and  $-10$  element compared to the typical 17 nucleotide spacer (Fig. 7B). High nucleotide conservation was also observed at the *antH* promoter and the  $-10$  element contains a “CTC” motif that is 100% conserved across all promoters although again spacer regions between the  $-10$  and  $-35$  elements vary in length between 17 and 18 bp (Fig. 7B). The *in silico* data therefore suggests that  $\sigma^{AntA}$  has highly conserved  $-35$  and  $-10$  binding sites at the *antG* and *antH* promoters of all antimycin producing *Streptomyces* strains. Scanning the complete published *S. albus* genome with the AntA  $-10$  and  $-35$  binding sites (using GLEME2 – part of MEME) returns only two significant hits, the *antGF* and *antHIJKLMNO* promoters suggesting there are no other  $\sigma^{AntA}$  targets (results not shown) (Bailey et al., 2009). This strongly suggests that  $\sigma^{AntA}$  is a pathway-specific regulator of antimycin biosynthesis.

### $\sigma^{AntA}$ represents a new sub-family of ECF sigma factors

$\sigma^{AntA}$  contains only the  $\sigma_2$  and  $\sigma_4$  domains (Pfam families PF04542 and PF08281) which is characteristic of the ECF family of RNA polymerase  $\sigma$  factors (Staron et al., 2009). However,  $\sigma^{AntA}$  does not fit into any of the ECF sub-families listed in the well-maintained public database ECF Finder (Staron et al., 2009). Multiple sequence alignments of the 14  $\sigma^{AntA}$  homologues in the database and representatives of all known

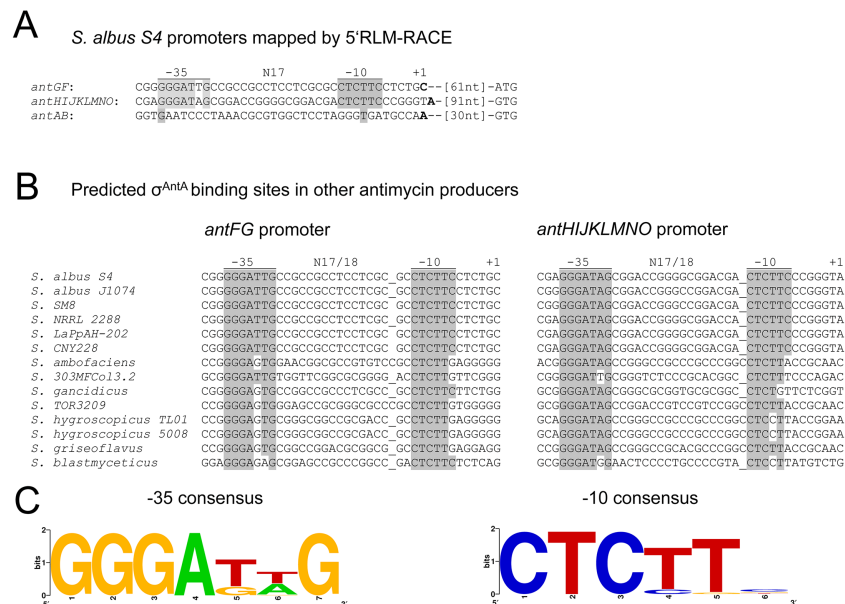


**Figure 5**  $\sigma^{AntA}$  activates transcription of the *antFG* and *antHIJKLMNO* operons. qRT-PCR analysis of antimycin genes in the wild-type and  $\Delta antA$  strains after 18 h growth. Transcription of *antFG* and *antHIJKLMNO* is significantly reduced in the  $\Delta antA$  mutant strain, whereas transcription of *antBCDE* are unaffected. \*\*\* denote that values reported are statistically significantly different in a Student's *t* test with a *P* value < 0.001 in a Student's *T*-test.



**Figure 6**  $\sigma^{AntA}$  alone is sufficient to activate transcription of *antFG* and *antHIJKLMNO* in 42 h old cultures. qRT-PCR analysis of wild-type or  $\Delta antA/pIJ10257-antA$  in 42 h old cultures shows that repression of  $\sigma^{AntA}$ -regulated genes can be overcome by over-expressing *antA*.

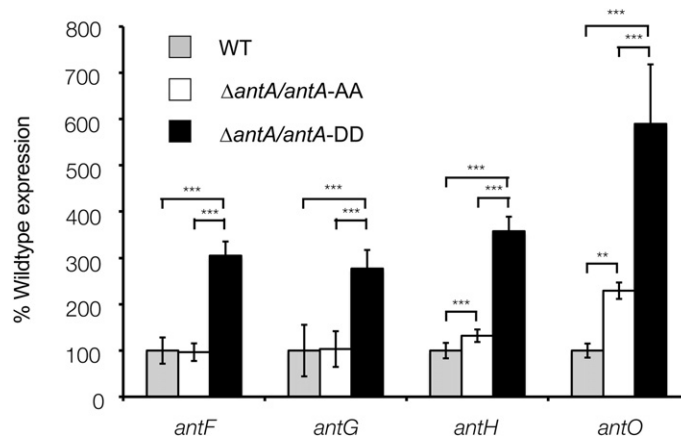
ECF sub-families revealed that the  $\sigma^{AntA}$  proteins form a distinct clade and therefore represent a new sub-family of ECF  $\sigma$  factors (Table S1 and Fig. S3). ECF  $\sigma$  factors are rare in secondary metabolite gene clusters and to our knowledge this is the first example in



**Figure 7 Identification of  $\sigma^{\text{AntA}}$  promoter motifs.** (A) The  $-10$  and  $-35$  motifs at the  $\sigma^{\text{AntA}}$ -target promoters of *antFG* and *antHIJKLMNO* are nearly 100% identical and display zero nucleotide identity with the promoter region of *antAB*. Shared identity is indicated by grey shading. The nucleotides mapped by 5'RLM-RACE is denoted by +1 and are shown in bold face (B) Conservation of the *S. albus* S4 *antFG* and *antHIJKLMNO* promoter elements in other antimycin-producing *Streptomyces* species. Conservation between the experimentally determined promoter region of *S. albus* S4 and the putative promoter regions of other antimycin producers is indicated by grey shading. (C) Consensus sequence for the  $-35$  and  $-10$  promoter elements recognised by  $\sigma^{\text{AntA}}$  displayed as a WebLogo (Crooks et al., 2004). Below are the full strain names and accession numbers for antimycin-producing strains: *S. ambofaciens* ATCC 23877 (AM238663), *S. blastmyceticus* NBRC 12747 (AB727666), *S. gancidicus* BKS 13-15 (AOHP00000000), *S. griseoflavus* T4000 (ACFA00000000), *S. hygroscopicus* subsp. *jinggangensis* 5008 (NC017765), *S. hygroscopicus* subsp. *jinggangensis* TL01 (NC020895), *Streptomyces* sp. 303MFCol5.2 (ARTR00000000), *Streptomyces* sp. TOR3209 (AGNH00000000), *S. albus* S4 (CADY00000000), *S. albus* J1074 (NC020990), *Streptomyces* sp. SM8 (AMPN00000000), *Streptomyces* sp. NRRL2288 (JX131329), *Streptomyces* sp. LaPpAH-202 (ARDM00000000), *Streptomyces* sp. CNY228 (ARIN00000000).

*Streptomyces* species (Foulston & Bibb, 2010; Sherwood & Bibb, 2013). The only obvious candidate for an anti- $\sigma^{\text{AntA}}$  factor in the antimycin gene cluster is the putative membrane protein STRS4\_02195. However, it is absent from the *ant* clusters in other streptomycetes, its removal has no effect on antimycin biosynthesis (Fig. 2) and it does not interact with  $\sigma^{\text{AntA}}$  in bacterial two-hybrid analysis (Fig. S4) which leads us to conclude that  $\sigma^{\text{AntA}}$  is an orphan ECF that is not subject to anti- $\sigma$  factor control. However, since *antA* expression is activated in substrate mycelium (by an as yet unknown regulator) and switched off following differentiation we predict that a mechanism might exist to remove  $\sigma^{\text{AntA}}$  protein at this stage of growth. The only unusual feature in the primary sequence of the 14  $\sigma^{\text{AntA}}$  homologues is the conserved C-terminal Ala-Ala (AA) motif (Fig. S2) which is a known signal for the serine protease ClpXP (Flynn et al., 2003). To test whether the C-terminal AA residues are required for  $\sigma^{\text{AntA}}$  activity we made two identical





**Figure 8** Altering the terminal Ala-Ala motif of  $\sigma^{AntA}$  results in higher expression of  $\sigma^{AntA}$  targets. The  $\Delta antA$  null mutant was complemented with either a wild-type copy of *antA* or a variant of *antA* encoding A172D and A173D point mutations. After 42 h of growth, transcription of  $\sigma^{AntA}$ -targets in the  $\Delta antA/antA-DD$  strain were significantly greater than both the wild-type and  $\Delta antA/antA-AA$  strains, suggesting the terminal Ala-Ala motif modulates stability and/or activity of  $\sigma^{AntA}$ . \*\* and \*\*\* denote that values reported are statistically significantly different with a *P* value < 0.01 and 0.001 in a Student's T-test, respectively.

constructs expressed under the control of the native *antB* promoter. The first construct drives production of the wild-type protein (designated  $\sigma^{AntA-AA}$ ) and the second drives production of an altered protein in which the AA has been replaced with DD (designated  $\sigma^{AntA-DD}$ ). We introduced these constructs into the *antA* mutant and measured expression of the *antGF* and *antHIJKLMNO* operons in these strains. Both operons are significantly more highly expressed in the strain producing  $\sigma^{AntA-DD}$  compared with the wild type  $\sigma^{AntA-AA}$  protein (Fig. 8). These data suggest that the two C-terminal residues play an important role in the stability and/or activity of  $\sigma^{AntA}$  and may target  $\sigma^{AntA}$  for proteolysis by ClpXP. Unfortunately, all attempts to detect the  $\sigma^{AntA}$  protein by immunoblotting whole cell extracts with polyclonal anti- $\sigma^{AntA}$  antibodies have been unsuccessful while tagging the protein at the N-terminus inactivates the protein (not shown). Future work will therefore be required to determine the role of the C-terminal AA motif in  $\sigma^{AntA}$  however, we have provided preliminary evidence that suggests  $\sigma^{AntA}$  might be a direct target for ClpXP, thereby bypassing the requirement for the additional level of anti- $\sigma$  regulation. This would also provide a rapid mechanism to shut down precursor biosynthesis when antimycins are no longer required.

## ACKNOWLEDGEMENTS

We thank Charles Brearley for assistance with HPLC, Barrie Wilkinson, Mervyn Bibb and Mark Buttner for helpful comments on this work and all members of the Hutchings group and the UEA iGem 2013 team for useful discussions.

## ADDITIONAL INFORMATION AND DECLARATIONS

### Funding

This work was supported by the Medical Research Council (Milstein award G0801721), the Natural Environment Research Council (grant NE/J01074X/1) and the John and Pamela Salter Charitable Trust. The funders had no role in study design, data collection and analysis, decision to publish, or preparation of the manuscript.

### Grant Disclosures

The following grant information was disclosed by the authors:

Medical Research Council.

Natural Environment Research Council.

John and Pamela Salter Charitable Trust.

### Competing Interests

The authors declare that they have no competing interests.

### Author Contributions

- Ryan F Seipke conceived and designed the experiments, performed the experiments, analyzed the data, contributed reagents/materials/analysis tools, wrote the paper.
- Elaine Patrick performed the experiments, contributed reagents/materials/analysis tools.
- Matthew I Hutchings conceived and designed the experiments, analyzed the data, contributed reagents/materials/analysis tools, wrote the paper.

### Supplemental Information

Supplemental information for this article can be found online at

<http://dx.doi.org/10.7717/peerj.253>.

## REFERENCES

- Altschul SF, Gish W, Miller W, Myers EW, Lipman DJ. 1990. Basic local alignment search tool. *Journal of Molecular Biology* 215:403–410.
- Bailey TL, Bodén M, Buske FA, Frith M, Grant CE, Clementi L, Ren J, Li WW, Noble WS. 2009. MEME SUITE: tools for motif discovery and searching. *Nucleic Acids Research* 37:W202–W208 DOI 10.1093/nar/gkp335.
- Barke J, Seipke RF, Gruschow S, Heavens D, Drou N, Bibb MJ, Goss RJM, Yu DW, Hutchings MI. 2010. A mixed community of actinomycetes produce multiple antibiotics for the fungus farming ant *Acromyrmex octospinosus*. *BMC Biology* 8:109 DOI 10.1186/1741-7007-8-109.
- Bignell DRD, Tahlan K, Colvin KR, Jensen SE, Leskiw BK. 2005. Expression of ccaR, encoding the positive activator of cephamycin C and clavulanic acid production in *Streptomyces clavuligerus*, is dependent on bldG. *Antimicrobial Agents and Chemotherapy* 49:1529–1541 DOI 10.1128/AAC.49.4.1529-1541.2005.
- Choulet F, Aigle B, Gallois A, Mangenot S, Gerbaud C, Truong C, Francou FX, Fourrier C, Gurineau M, Decaris B, Barbe V, Pernodet JL, LeBlond P. 2006. Evolution of the terminal regions of the *Streptomyces* linear chromosome. *Molecular Biology and Evolution* 23:2361–2369 DOI 10.1093/molbev/msl108.

- Crooks GE, Hon G, Chandonia JM, Brenner SE. 2004. WebLogo: a sequence logo generator. *Genome Research* 14:1188–1190 DOI 10.1101/gr.849004.
- Dunshee BR, Leben C, Keitt GW, Strong FM. 1949. The isolation and properties of antimycin A. *Journal of the American Chemical Society* 71:2436–2437 DOI 10.1021/ja01175a057.
- Finlayson BJ, Schnick RA, Cailteux RL, DeMong L, Horton WD, McClay W, Thompson CW. 2002. Assessment of antimycin a use in fisheries and its potential for reregistration. *Fisheries* 27:10–18 DOI 10.1577/1548-8446(2002)027%3C0010:AOAAUI%3E2.0.CO;2.
- Flynn JM, Neher SB, Kim YI, Sauer RT, Baker TA. 2003. Proteomic discovery of cellular substrates of the ClpXP protease reveals five classes of ClpX-recognition signals. *Molecular Cell* 11:671–683 DOI 10.1016/S1097-2765(03)00060-1.
- Foulston LC, Bibb MJ. 2010. Microbisporicin gene cluster reveals unusual features of lantibiotic biosynthesis in actinomycetes. *Proceedings of the National Academy of Sciences of the United States of America* 107:13461–13466 DOI 10.1073/pnas.1008285107.
- Gomez-Escribano JP, Bibb MJ. 2011. Engineering *Streptomyces coelicolor* for heterologous expression of secondary metabolite gene clusters. *Microbial Biotechnology* 4:207–215 DOI 10.1111/j.1751-7915.2010.00219.x.
- Guindon S, Dufayard JF, Lefort V, Anisimova M, Hordijk W, Gascuel O. 2010. New algorithms and methods to estimate maximum-likelihood phylogenies: assessing the performance of PhyML 3.0. *Systematic Biology* 59:307–321 DOI 10.1093/sysbio/syq010.
- Gust B, Challis GL, Fowler K, Kieser T, Chater KF. 2003. PCR-targeted *Streptomyces* gene replacement identifies a protein domain needed for biosynthesis of the sesquiterpene soil odor geosmin. *Proceedings of the National Academy of Sciences of the United States of America* 100:1541–1546 DOI 10.1073/pnas.0337542100.
- Gust B, O'Rourke S, Bird N, Kieser T, Chater KF. 2003b. *Recombineering in streptomyces coelicolor*. Norwich: The John Innes Foundation.
- Hong H-J, Hutchings MI, Hill LM, Buttner MJ. 2005. The role of the novel Fem protein VanK in vancomycin resistance in *Streptomyces coelicolor*. *Journal of Biological Chemistry* 280:13055–13061 DOI 10.1074/jbc.M413801200.
- Hu D, Li X, Chang Y, He H, Zhang C, Jia N, Li H, Wang Z. 2012. Genome sequence of *Streptomyces* sp. strain TOR3209, a rhizosphere microecology regulator isolated from tomato rhizosphere. *Journal of Bacteriology* 194:1627–1627 DOI 10.1128/JB.06684-11.
- Hutchings MI, Crack JC, Shearer N, Thompson BJ, Thomson AJ, Spiro S. 2002. Transcription factor FnrP from *Paracoccus denitrificans* contains an iron-sulfur cluster and is activated by anoxia: identification of essential cysteine residues. *Journal of Bacteriology* 184:503–508 DOI 10.1128/JB.184.2.503-508.2002.
- Karimova G, Pidoux J, Ullmann A, Ladant D. 1998. A bacterial two-hybrid system based on a reconstituted signal transduction pathway. *Proceedings of the National Academy of Sciences of the United States of America* 95:5752–5756 DOI 10.1073/pnas.95.10.5752.
- Kelemen GH, Brown GL, Kormanec J, Potúcková L, Chater KF, Buttner MJ. 1996. The positions of the sigma-factor genes, *whiG* and *sigF*, in the hierarchy controlling the development of spore chains in the aerial hyphae of *Streptomyces coelicolor* A3(2). *Molecular Microbiology* 21:593–603 DOI 10.1111/j.1365-2958.1996.tb02567.x.
- Kieser T, Bibb MJ, Buttner MJ, Chater KF, Hopwood DA. 2000. *Practical Streptomyces genetics*. Norwich: The John Innes Foundation.

- Kumar S, Kaur N, Singh NK, Raghava GPS, Mayilraj S. 2013.** Draft genome sequence of *Streptomyces gancidicus* strain BKS 13-15. *Genome Announcements* 1:e00150–13.
- MacNeil DJ, Gewain KM, Ruby CL, Dezeny G, Gibbons PH, MacNeil T. 1992.** Analysis of *Streptomyces avermitilis* genes required for avermectin biosynthesis utilizing a novel integration vector. *Gene* 111:61–68 DOI 10.1016/0378-1119(92)90603-M.
- Riclea R, Aigle B, Leblond P, Schoenian I, Spiteller D, Dickschat JS. 2012.** Volatile lactones from streptomycetes arise via the antimycin biosynthetic pathway. *ChemBioChem* 13:1635–1644 DOI 10.1002/cbic.201200260.
- Sandy M, Rui Z, Gallagher J, Zhang W. 2012.** Enzymatic synthesis of dilactone scaffold of antimycins. *ACS Chemical Biology* 7:1956–1961 DOI 10.1021/cb300416w.
- Sandy M, Zhu X, Rui Z, Zhang W. 2013.** Characterization of AntB, a promiscuous acyltransferase involved in antimycin biosynthesis. *Organic Letters* 15:3396–3399 DOI 10.1021/ol4014365.
- Schoenian I, Paetz C, Dickschat JS, Aigle B, Leblond P, Spiteller D. 2012.** An unprecedented 1,2-shift in the biosynthesis of the 3-aminosalicylate moiety of antimycins. *ChemBioChem* 13:769–773 DOI 10.1002/cbic.201200033.
- Seipke RF, Barke J, Brearley C, Hill L, Yu DW, Goss RJM, Hutchings MI. 2011a.** A single *Streptomyces* symbiont makes multiple antifungals to support the fungus farming ant *Acromyrmex octospinosus*. *PLoS ONE* 6:e22028 DOI 10.1371/journal.pone.0022028.
- Seipke RF, Crossman L, Drou N, Heavens D, Bibb MJ, Caccamo M, Hutchings MI. 2011b.** Draft genome sequence of *Streptomyces* Strain S4, a symbiont of the leaf-cutting ant *Acromyrmex octospinosus*. *Journal of Bacteriology* 193:4270–4271 DOI 10.1128/JB.05275-11.
- Seipke RF, Hutchings MI. 2013.** The regulation and biosynthesis of antimycins. *Beilstein Journal of Organic Chemistry* 9:255–2563 DOI 10.3762/bjoc.9.290.
- Sherwood EJ, Bibb MJ. 2013.** The antibiotic planosporicin coordinates its own production in the actinomycete *Planomonospora alba*. *Proceedings of the National Academy of Sciences of the United States of America* 110:E2500-9 DOI 10.1073/pnas.1305392110.
- Schwartz PS, Manion MK, Emerson CB, Fry JS, Schulz CM, Sweet IR, Hockenbery DM. 2007.** 2-Methoxy antimycin reveals a unique mechanism for Bcl-xL inhibition. *Molecular Cancer Therapeutics* 6:2073–2080 DOI 10.1158/1535-7163.MCT-06-0767.
- Sievers F, Wilm A, Dineen D, Gibson TJ, Karplus K, Li W, Lopez R, McWilliam H, Remmert M, Soding J, Thompson JD, Higgins DG. 2011.** Fast, scalable generation of high-quality protein multiple sequence alignments using clustal omega. *Molecular Systems Biology* 7:1–6 DOI 10.1038/msb.2011.75.
- Staron A, Sofia HJ, Dietrich S, Ulrich LE, Liesegang H, Mascher T. 2009.** The third pillar of bacterial signal transduction: classification of the extracytoplasmic function (ECF) sigma factor protein family. *Molecular Microbiology* 74:557–581 DOI 10.1111/j.1365-2958.2009.06870.x.
- Tzung SP, Kim KM, Basañez G, Giedt CD, Simon J, Zimmerberg J, Zhang KYJ, Hockenbery DM. 2001.** Antimycin A mimics a cell-death-inducing Bcl-2 homology domain 3. *Nature Cell Biology* 3:183–191 DOI 10.1038/35055095.
- Yan Y, Zhang L, Ito T, Qu X, Asakawa Y, Awakawa T, Abe I, Liu W. 2012.** Biosynthetic pathway for high structural diversity of a common dilactone core in antimycin production. *Organic Letters* 14:4142–4145 DOI 10.1021/ol301785x.