

Article

Estimating Energy Dissipation Rate from Breaking Waves Using Polarimetric SAR Images

Rafael D. Viana ^{1,†} , João A. Lorenzetti ^{1,*,†}, Jonas T. Carvalho ²  and Ferdinando Nunziata ³ 

¹ Earth Observation and Geoinformatics Division, National Institute for Space Research (OTG/INPE), São José dos Campos 12201-970, SP, Brazil; rafael.viana@inpe.br

² Laboratory of Ocean and Atmosphere Studies (LOA), Earth Observation and Geoinformatics Division, National Institute for Space Research (OTG/INPE), São José dos Campos 12201-970, SP, Brazil; jonas.carvalho@inpe.br

³ Dipartimento di Ingegneria, Università degli Studi di Napoli Parthenope, 80143 Napoli, Italy; ferdinando.nunziata@uniparthenope.it

* Correspondence: joao.lorenzetti@inpe.br; Tel.: +55-12-99719-2511

† These authors contributed equally to this work.

Received: 8 October 2020; Accepted: 13 November 2020; Published: 16 November 2020



Abstract: The total energy dissipation rate on the ocean surface, ϵ_t (W m^{-2}), provides a first-order estimation of the kinetic energy input rate at the ocean–atmosphere interface. Studies on the spatial and temporal distribution of the energy dissipation rate are important for the improvement of climate and wave models. Traditional oceanographic research normally uses remote measurements (airborne and platforms sensors) and in situ data acquisition to estimate ϵ_t ; however, those methods cover small areas over time and are difficult to reproduce especially in the open oceans. Satellite remote sensing has proven the potential to estimate some parameters related to breaking waves on a synoptic scale, including the energy dissipation rate. In this paper, we use polarimetric Synthetic Aperture Radar (SAR) data to estimate ϵ_t under different wind and sea conditions. The used methodology consisted of decomposing the backscatter SAR return in terms of two contributions: a polarized contribution, associated with the fast response of the local wind (Bragg backscattering), and a non-polarized (NP) contribution, associated with wave breaking (Non-Bragg backscattering). Wind and wave parameters were estimated from the NP contribution and used to calculate ϵ_t from a parametric model dependent of these parameters. The results were analyzed using wave model outputs (WAVEWATCH III) and previous measurements documented in the literature. For the prevailing wind seas conditions, the ϵ_t estimated from pol-SAR data showed good agreement with dissipation associated with breaking waves when compared to numerical simulations. Under prevailing swell conditions, the total energy dissipation rate was higher than expected. The methodology adopted proved to be satisfactory to estimate the total energy dissipation rate for light to moderate wind conditions (winds below 10 m s^{-1}), an environmental condition for which the current SAR polarimetric methods do not estimate ϵ_t properly.

Keywords: SAR; radar polarimetry; wave breaking; energy dissipation rate

1. Introduction

Wave breaking plays a significant role in momentum, energy and gas exchanges at the ocean–atmosphere interface. Wave breaking controls the maximum height of surface waves, and therefore can affect the skill of operational wave models [1]. The flux of greenhouse gases have been shown to depend on the water-side turbulence [2,3], which depends on the wave breaking [4–6]. The breaking of surface waves also produces whitecaps, promotes the mixing and enhances the

insertion of bubbles in the surface layers in the ocean [1]. This influences the estimation of the inherent optical properties of the ocean, and thus the interpretation of the ocean color data [7,8]. Moreover, whitecap cover serves as a first step in the modeling of sea spray droplet as a sea spray source [9]. Several authors have demonstrated that instead of the wind speed, U_{10} , the total energy dissipation rate, ϵ_t , is a more adequate parameter to model the whitecap coverage, since whitecaps are generated by the breaking of the waves [10–12].

Direct measurements of the energy dissipation rate resulting from wave breaking are not yet possible. However, estimates of ϵ_t can be obtained using spectral dissipation models. Different spectral dissipation models can be found in the literature [13–16]. Phillips [14] obtained the total energy dissipation rate by integrating the spectral density function over an equilibrium range of wavenumbers in which the wind input, dissipation and non-linear transfers were in local balance. This solution has been used as a basis for calculating the dissipation rate associated with breaking waves using field measurements of the wave spectrum [12,17–19]. In fact, the Phillips model has been used in measurements of the energy dissipation rate using remote sensing methods [20]. Several approaches using remote sensing can be used to study wave breaking properties, including: combined use of visual observations and simultaneous measurements of wind and waves [8,18,21], acoustic methods based on the penetration of air bubbles during the process of breaks [17,22], infrared remote sensing [23,24] and of the passive and active microwaves [9,25,26]. The difficulty in obtaining in situ measurements of wave breaking events and surface sea roughness, especially in strong wind fields, encourages the use of orbital remote sensing to derive an estimate of these quantities.

Polarimetric SAR data can be used to estimate the effects of breaking waves in co-polarized and cross-polarized radar return [27–29]. The main parameter of interest estimated by SAR is the oceanic normalized radar cross section (NRCS), also known as sigma zero (σ_0), which is proportional to the surface roughness on the scale of short waves. The σ_0 can be decomposed as a sum of polarized scattering, due to two-scale resonant Bragg-scattering, and a non-polarized scattering component (NP), due to breaking of waves [28,29]. Using RadarSAT-2 dual and quad-polarization, Hwang et al. [28] obtained an empirical relationship between the NP backscatter from cross-polarization return and the total energy dissipation rate. The authors found that quad-pol data is more accurate in estimating ϵ_t , especially in conditions of strong winds (U_{10} above 10–15 m s⁻¹), where its low noise floor (about -36 dB) has a negligible contribution to the cross-polarized return. However, estimates of ϵ_t in light to moderate wind speed conditions using both dual-pol and quad-pol data does not have a good correlation with expected values from parametric models. Considering that whitecaps occur on the surface of the ocean under wind speeds above 3 m s⁻¹ [18,30], the relationship obtained by Hwang et al. [28] does not include the interval between low-to-moderate wind speeds.

For low winds below 10 m s⁻¹, Kudryavtsev et al. [31] observed that the NP contribution in co-polarized backscattering channels depends exponentially on the wind speed. More recently, Kudryavtsev et al. [32] derived empirical dependencies between the NP contribution in dual co- and cross-polarized SAR and wind speed and geometry of SAR observations (polarimetry, incidence and azimuth angles) using a large dataset of RadarSAT-2 quad-polarized images. The empirical functions obtained by the authors proved to be valid for wind speeds above 3 m s⁻¹, and can then be used to assess upper ocean processes. Using this approach, this study aims to analyze the potential use of NP contribution presented in the co-polarized backscattering SAR return to estimate the total energy dissipation rate, extending the interval of estimation for the low-to-moderate winds. For this purpose, we use quad-pol RadarSAT-2 satellite images to estimate the total energy dissipation rate associated with breaking waves from the NP contribution present in the co-polarized NRCS channels. We analyze the estimated ϵ_t in relation to the Bragg polarization ratio model, and the influence of different environmental conditions and incidence angles. An indirect check of the proposed methodology was done comparing the estimates from SAR scenes with those obtained from wave modeling.

This paper is organized as follows. The study area and data are presented in Section 2. In Section 3 we present the methodology for estimating the total energy dissipation rate using backscatter SAR

return. The results based on the proposed methodology are presented in Section 4, followed by the discussion in Section 5. The conclusions are presented in Section 6.

2. Study Area and Materials

2.1. Study Area

This study was undertaken in three different oceanic regions: (1) a region off the California coast located in the South of the Santa Barbara Channel, (2) in the northern portion of the Gulf of Mexico, and (3) a region off the Santos Basin located close to the shelf break, Figure 1. These regions were chosen for their different marine and meteorological conditions, and proper for assessing the validity of the proposed methodology. The scenes were also obtained for different ocean depths, ranging from 20 to 1000 m.

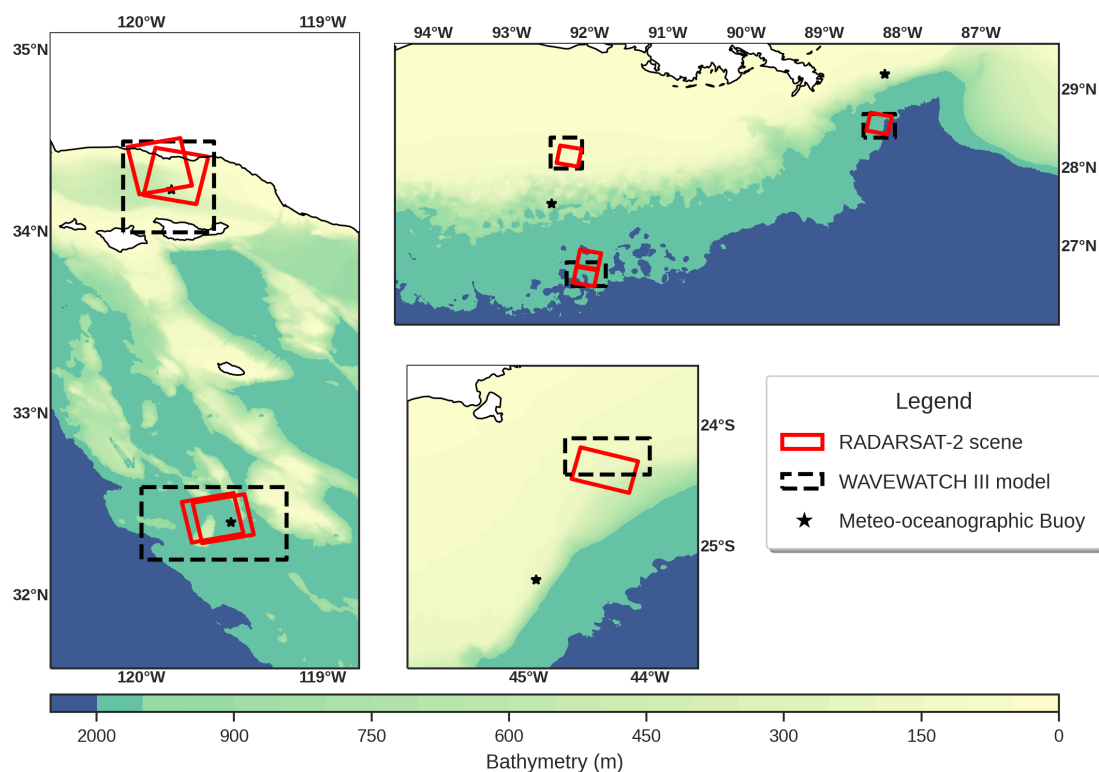


Figure 1. Study area used: (left) California coast; (right and upper) northern portion of the Gulf of Mexico; and (right and bottom) portion of the Santos Basin, Brazil.

2.2. SAR Data Set

The SAR data set consists of nine RadarSAT-2 (RS-2) fine-quad polarimetric acquisitions collected over different oceanic regions of the Atlantic and Pacific Ocean (see Figure 1, represented by red squares). Angles of incidence (AoI) ranging from about 24.6° in California coast to 43.3° in the northern part of the Gulf of Mexico. The RS-2 operates in the C-band (central frequency of 5.40 GHz) and has a nominal resolution of 4.7 and 5.2 m in the range and azimuth, respectively. Each scene covers an area of approximately 25×25 km, and the single-look complex (SLC) product provides the four complex scattering amplitudes, i.e., both co-pol channels (VV/HH) and cross-pol channels (VH/HV). The nominal noise-equivalent sigma zero (NESZ) of the system is approximately -36 dB but shows a variation with incidence angle [33].

The original SAR data were pre-processed according to the following steps: (a) calibration in normalized radar cross section (NRCS) units, (b) NESZ correction using the method of the minimum eigenvalue of the 4×4 Coherency Matrix proposed in Hajnsek et al. [34], (c) extraction of clean-sea

surface tiles from the SAR data set, and (d) finally the resampling of SAR images using the spatial *multilooking* with 10-by-10 pixels window. Figure 2 shows extracted tiles of the VV- and HH-polarized intensity images of SAR dataset representing clean-sea surface areas.

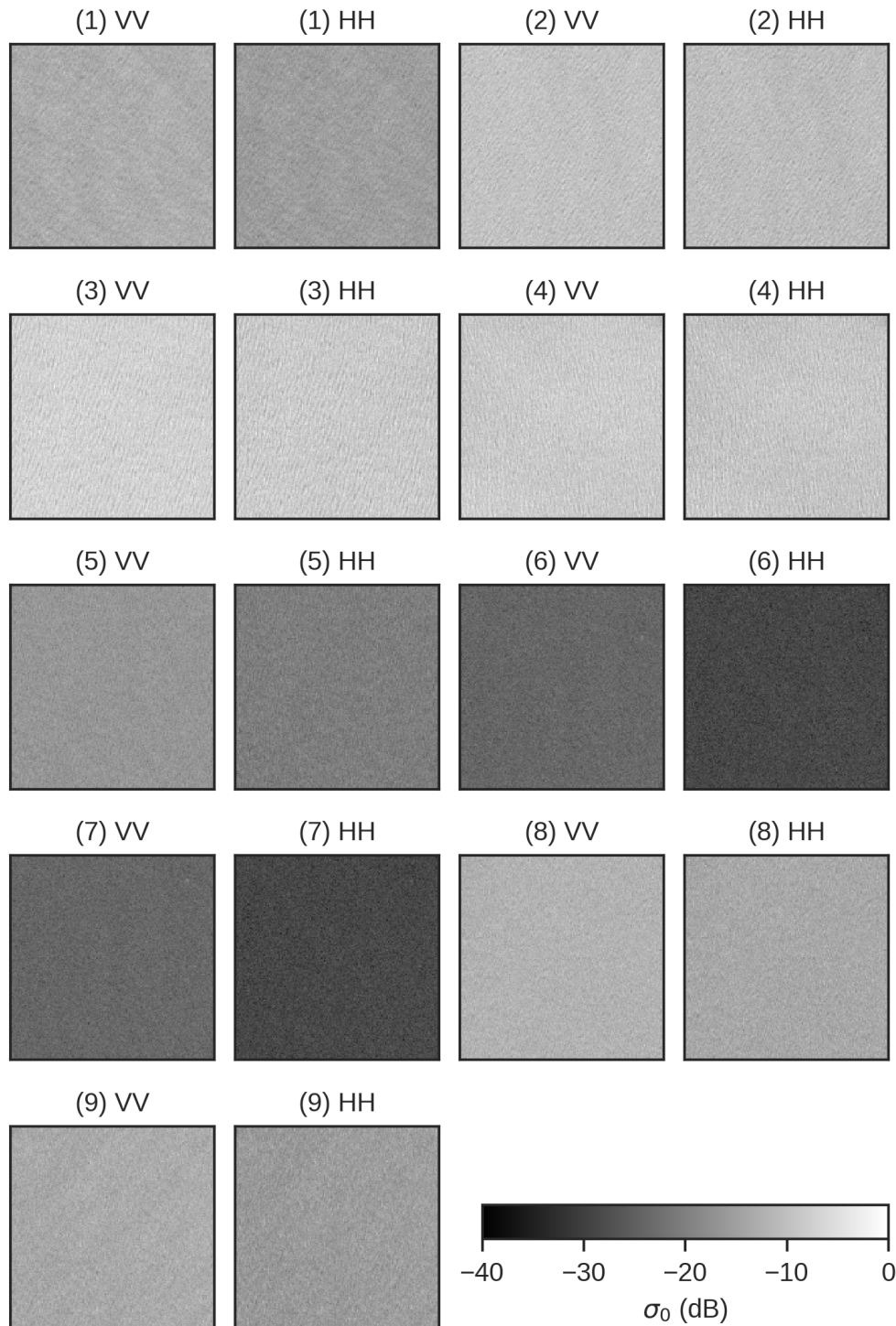


Figure 2. RadarSAT-2 dataset. VV- and HH-polarized intensity images (size: 150×150 pixels, spatial resolution: 50 m), in dB, over clean-sea surface area. Numbers refer to ID of each scene as shown in Table 1.

2.3. Ancillary Information

Wind field (U_{10} , U_{dir}) and sea surface temperature (SST) information was provided by the European Center for Medium-Range Weather Forecasts (ECMWF) ERA5 Reanalysis [35]. The wind and SST products from ERA5 data set are on a $0.25^\circ \times 0.25^\circ$ spatial grid and hourly temporal resolution. The wind speed ranged from low-to-moderate wind speeds, i.e., from about 3 to 11 m s^{-1} . Hereafter we use U_{10} to refer to the low-resolution ($\sim 25 \text{ km}$) wind speed field obtained from ERA5.

In situ wind and wave information was provided by the buoy data set from National Data Buoy Center (NDBC) and National Buoy Program of the Brazilian Navy (PNBOIA). This information was used to characterize the sea state for each scene, using the concept of a non-dimensional wave age [36], $WA = c_p/u_*$, where c_p is peak wave speed and u_* is the friction velocity. Only half of the SAR scenes were collocated with the buoys, the other half of buoys were within 100 km from the scene. The used ancillary information is summarized in Table 1.

Table 1. RadarSAT-2 data set and mete-oceanographic variables.

Scene ID	Product ID	Date/Hour (UTM)	Central Location		AoI		U_{10} (m s^{-1})	U_{dir} ($^\circ$)	WA
			Latitude	Longitude	($^\circ$)	Orbit			
1	53,617	26 September 2009 01:56	32.43° N	119.54° W	31.3–33.0	Ascending	8.0	123	54.8
2	57,307	27 October 2009 01:52	32.43° N	119.61° W	24.6–26.5	Ascending	5.6	127	83.6
3	63,140	14 December 2009 01:52	34.36° N	119.90° W	25.7–27.6	Ascending	8.4	108	54.7
4	63,215	14 December 2009 14:09	34.31° N	119.80° W	24.6–26.5	Descending	4.2	172	123.4
5	79,608	1 May 2010 12:05	28.14° N	92.27° W	39.3–40.7	Descending	10.0	330	25.9
6	80,536	8 May 2010 12:01	26.80° N	92.02° W	41.9–43.3	Descending	6.0	270	35.7
7	80,536	8 May 2010 12:01	26.63° N	92.05° W	41.9–43.3	Descending	6.0	270	35.7
8	81,514	15 May 2010 11:57	28.39° N	88.34° W	41.9–43.3	Descending	7.3	295	47.1
9	496,265	5 August 2016 08:25	24.36° S	44.37° W	31.7–34.7	Descending	12.5	258	20.9

2.4. Wave Model

For this study we employed the third-generation wave model, WAVEWATCH III (WW3) version 5.16 [37], and used the model generated energy dissipation rate to compare to the satellite estimates. The WW3 model was developed by the National Oceanic and Atmospheric Administration/National Centers for Environmental Prediction (NOAA/NCEP) and it is currently at version 6.07.1. The forcing fields are 0.25° spatial resolution from ERA5 and the bottom topography data are from ETOPO1. The model was run using three nested grids in a two-way nesting scheme: a global grid of 25 km spatial resolution, a regional grid of 5 km spatial resolution, and a local grid of 1 km spatial resolution incorporating all or part of each SAR image (see Figure 1, represented by black rectangles).

The ST4 parameterization of Ardhuin et al. [16] for the input (S_{in}) and dissipation (S_{ds}) source term was used, while the non-linear interaction source term used was the Discrete Interaction Approximation (DIA) parameterization. The ST4 parameterization is based on [15], where dissipation source is due to breaking while dissipation by swell is considered a negative wind input. The dissipation source term is then calculated as the sum of two contributions: one breaking-induced contribution that is based on the local saturation spectrum and one cumulative dissipation rate contribution estimated from breaking wave probabilities. The full physical-mathematical description of this parameterization can be found in [16].

The model was configured to generate source term outputs every full hour using approximately 100 stations, distributed within each local grid and spaced between 1 to 2 km apart. The spectral grid was discretized with 24 directions and 25 frequencies.

3. Model Approach

3.1. Energy Dissipation Rate

Wave breaking is considered to be the dominant source of turbulence and energy dissipation in the upper ocean, and different studies of the energy dissipation rate indicate a cubic wind speed

dependence [12,14,17,18]. Hwang and Sletten [12] establish a parameterized dissipation function expressed in terms of wind speed, significant wave height and peak wave frequency:

$$\epsilon_t = \alpha \rho_a U_{10}^3 \quad (1)$$

where ρ_a is the air density ($=1.20 \text{ kg m}^{-3}$, for air at $20 \text{ }^\circ\text{C}$) and α is a parameter dependent on the sea state development. As the wave develops, α gradually increases until it reaches a maximum value ($\sim 5.7 \times 10^{-4}$) in conditions of fully developed sea, and then decreases as the waves become more mature. The value of α depends on the non-dimensional parameters of peak wave frequency and surface elevation variance. For convenience, these parameters can be approximated from U_{10} using the look-up-table described in Hwang and Sletten [12] (see their Table 1).

Wind speed, surface elevation variance and peak wave frequency can be obtained using satellite remote sensing (e.g., scatterometry and altimetry) or meteo-oceanographic buoy data. However, such methods provide only the regional wind and wave fields due to their low spatial resolution. The high spatial resolution from SAR data has the potential to estimate the energy dissipation rate on a local scale.

3.2. Wave Breaking Contribution in σ_0

Using the concept of length of breaking fronts per unit area statistics introduced by [38] combined with an approach of the composite Bragg theory, Kudryavtsev et al. [27,29] described a model to predict σ_0 as a combination of three components:

$$\sigma_0^{pp} = \sigma_{0Br}^{pp} + \sigma_{sp}^{pp} + \sigma_{wb} \quad (2)$$

where pp represents the transmitted and received polarizations (H or V). The first component on right side, σ_{0Br}^{pp} , represents backscatter associated with the Bragg's resonant mechanism. The second component, σ_{sp}^{pp} , is associated with the contribution of specular reflection, which can be neglected for intermediate incidence angles. The last component, σ_{wb} , represents the non-polarized (NP) contribution due to the breaking of surface waves, and it is the same for both polarizations [27]. The wave breaking contribution can be removed through the polarization difference (PD) between co-polarized returns:

$$\Delta\sigma_0 = \sigma_0^{VV} - \sigma_0^{HH} = \sigma_{0Br}^{VV} - \sigma_{0Br}^{HH} \quad (3)$$

Combining Equations (2) and (3), and considering the range of incidence angles between 25° and 50° where the specular contribution can be neglected, the NP contribution can be expressed as a function of $\Delta\sigma_0$ as:

$$\sigma_{wb} = \sigma_0^{VV} - \frac{\Delta\sigma_0}{1 - p_B} \quad (4)$$

where p_B correspond to the polarization ratio for the two-scale Bragg-scattering components ($p_B = \sigma_{0Br}^{HH} / \sigma_{0Br}^{VV}$). Using Equations (3) and (4), the co-polarized images can be decomposed in NP and PD components which are related to different scattering mechanisms. The NP contribution is related to enhanced surface roughness generated by the breaking waves and also specular reflection from forward faces of breaking waves, while the PD contribution is related to Bragg scattering provided by wind waves responses [31,32]. The PD contribution is estimated directly from the σ_0 measurements in each SAR image. On the other hand, the Bragg polarization ratio cannot be estimated directly from the scenes. Different approaches can be used to obtain p_B . Two possibilities to evaluate p_B are:

- (a) using simplified two-scale models (TSM) calculated from the mean square slope (MSS) statistics of tilting waves [27,29]; or,
- (b) estimated using σ_{0Br}^{VV} and σ_{0Br}^{HH} from an electromagnetic backscatter model calculated from a chosen wave spectrum model [39,40].

Although Method (a) using approximate equations is computationally simpler, Method (b) should provide a more accurate estimate of p_B at the cost of more computational time depending on the electromagnetic model used [41]. In our work, σ_{wb} was calculated from SAR images using Equation (4), pixel-at-pixel, with the Bragg polarization ratio estimated using both methods (a) and (b). We used the approximate equations for the TSM model described in Kudryavtsev et al. [32] (see Equation (A1) in Appendix A) for Method (a), and we used the two-scale Boundary Perturbation Model (BPM) [42,43] for Method (b).

The BPM model represents the backscattering (σ_0) of the sea surface as a superposition of two independent stochastic processes: one process associated with capillary and short-gravity waves (small-scale roughness) and one process associated with the long waves (large-scale roughness). It has been used for sea surface scattering [42] and sea oil slick observations [43,44], and the model allows for detailed scattering calculations in very little computer time in a table-top machine. The full physical-mathematical description of BPM model can be found in [43]. The two-dimensional sea surface spectrum used for the BPM model was Elfouhaily [45], which is specified once the wind friction velocity (calculated from U_{10} and formula described in [46]) and the fetch x are provided.

3.3. Relationship between σ_{wb} and Environmental and Imaging Parameters

Using nearly 1700 RS-2 quad-pol SAR images co-located with buoy observations and the model described by Equation (4), Kudryavtsev et al. [32] derived an empirical relationship between σ_{wb} and wind speed U_{10} , incidence angle θ and azimuth angle ϕ , as (see their Equation (8)):

$$\sigma_{wb} = f_{wb}(\theta)Y_{wb}(\phi)U_{10}^{n_{wb}(\theta)} \quad (5)$$

where f_{wb} and n_{wb} depends on incidence angle, and are described as:

$$\begin{aligned} f_{wb}(\theta) &= 1.9 \times 10^{-3} e^{-0.32(\theta - 30^\circ)} \\ n_{wb}(\theta) &= 1.3 + 4.7 \times 10^{-2}(\theta - 30^\circ) \end{aligned} \quad (6)$$

The angular distribution coefficient, Y_{wb} , depends on both θ and ϕ , and is described as:

$$\begin{aligned} Y_{wb}(\phi) &= \exp[A_{0wb} + A_{1wb} \cos \phi + A_{2wb} \cos 2\phi] \\ \text{with, } \begin{cases} A_{0wb} = 0.24 - 1.4 \times 10^{-2}(\theta - 30^\circ) \\ A_{1wb} = 0.33 + 1.3 \times 10^{-2}(\theta - 30^\circ) \\ A_{2wb} = 0.12 + 1.4 \times 10^{-2}(\theta - 30^\circ) \end{cases} \end{aligned} \quad (7)$$

Based on these results, σ_{wb} can be estimated directly from the SAR co-polarized components (Equation (4)) or from the environmental and imaging conditions (Equation (5)). We use the NP contribution obtained from Equation (4) at each pixel of the SAR scenes to estimate the associated wind speed (\tilde{U}_{10}) using Equations (5)–(7) as:

$$\tilde{U}_{10}(\sigma_{wb}, \theta, \phi) = \left(\frac{\sigma_{wb}}{f_{wb}(\theta)Y_{wb}(\phi)} \right)^{1/n_{wb}(\theta)} \quad (8)$$

In this way, we preserve the variability associated with wind speed while taking into account the effect of wave breaking. Hereafter we use \tilde{U}_{10} to refer to the high-resolution (~ 500 m) wind speed field obtained from SAR images and Equation (8). Finally, we used \tilde{U}_{10} , instead of U_{10} from ERA5 data set, to estimate the α parameter, now function of \tilde{U}_{10} , and the total energy dissipation rate from Equation (1), as:

$$\epsilon_t = \alpha(\tilde{U}_{10})\rho_a\tilde{U}_{10}^3 \quad (9)$$

thus obtaining the energy dissipation rate at ~ 500 m of spatial resolution.

4. Results

4.1. Influence of the p_B Estimation on the Non-Polarized Contribution

The relative contribution of σ_{wb} in the co-polarized components as a function of the incidence angle, when using (a) the simplified TSM model (Appendix A) and (b) BPM model to estimate the polarization ratio, is shown in Figures 3 and 4, respectively. Using the simplified TSM model (Figure 3), the relative contribution for both polarizations varied between 10% and 50%, with the lowest values occurring mostly in the high incidence angles. The percentual values obtained in our work are below the average values obtained by [32]. Using the BPM model (Figure 4), the relative contribution in VV varied between 20% and 70%, with the highest percentage of contribution occurring at low incidence angles (approximately 60%), and rapidly decreasing to approximately 15% at high incidence angles. The relative contribution in HH, however, remained at approximately 50% across the range of moderate incidence angles ($>30^\circ$), with the maximum contribution occurring at low incidence angles. These results show a similar behavior to those obtained by [32], where the contribution of σ_{wb} in VV-polarization shows a decreasing trend with increasing incidence angle, and the contribution in HH-polarization tends to stabilize at incidence angles above 30° . In addition, the percentage values are closer to the average values obtained by the authors (see [32], Figure 2) when using the BPM model.

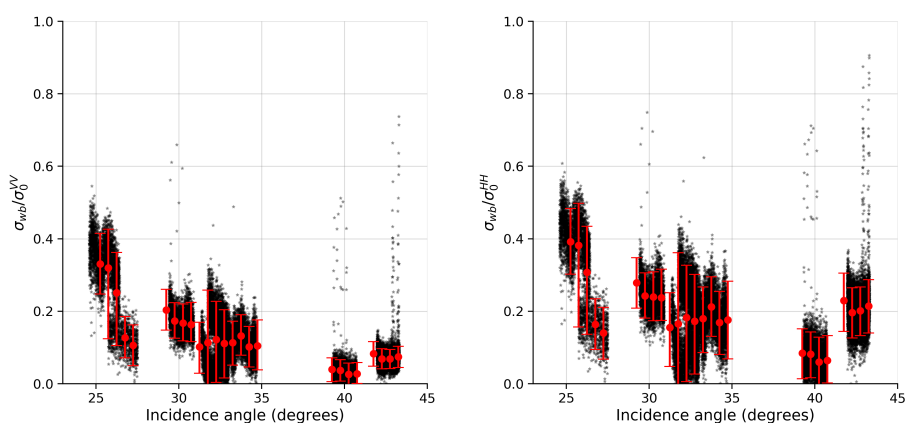


Figure 3. Relative contribution of σ_{wb} in VV (left) and HH (right) components when using a simplified TSM model. RadarSAT-2 observations are represented as black dots, while red circles with vertical bars are mean values and percentiles of 5% and 95%, respectively.

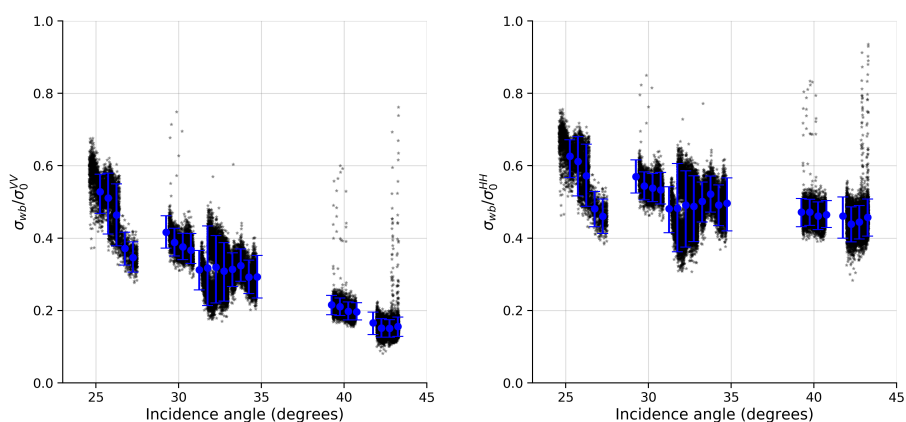


Figure 4. Relative contribution of σ_{wb} in VV (left) and HH (right) components when using a BPM model. RadarSAT-2 observations are represented as black dots, while blue circles with vertical bars are mean values and percentiles of 5% and 95%, respectively.

The sensitivity of σ_{wb} estimated from SAR images (SAR-derived σ_{wb}) with respect to the method used to determine p_B was analyzed using the expected value of σ_{wb} using the environmental low-resolution wind (U_{10} , U_{dir}) and imaging (AoI, azimuthal angles) configurations and the empirical relationship described in Equation (5) (Empirical σ_{wb}). Figures 5 and 6 show a comparison of σ_{wb} estimated using both the simplified TSM and BPM models. As already noted in Figure 3, there was an underestimation of the NP contribution when using the TSM model, in all sea conditions. Kudryavtsev et al. [31] showed that a variation of up to $\pm 10\%$ in the estimate of p_B can lead to an error of approximately $\pm 20\%$ or greater in the estimate of NP contribution. The estimate of the NP contribution when using the BPM model (Figure 6) showed an overall good agreement with the estimated values using the empirical relationship, even at and especially in sea conditions of prevailing old swell. The estimates obtained from the simplified TSM model had bias values of -4.45 dB and RMSE of 5.45 dB, indicating both an underestimation and a large variance in σ_{wb} in relation to the expected average in each scene. The estimates obtained from the BPM model had values of bias of -0.33 dB and RMSE of 1.99 dB, which were close to the values obtained by Kudryavtsev et al. [32].

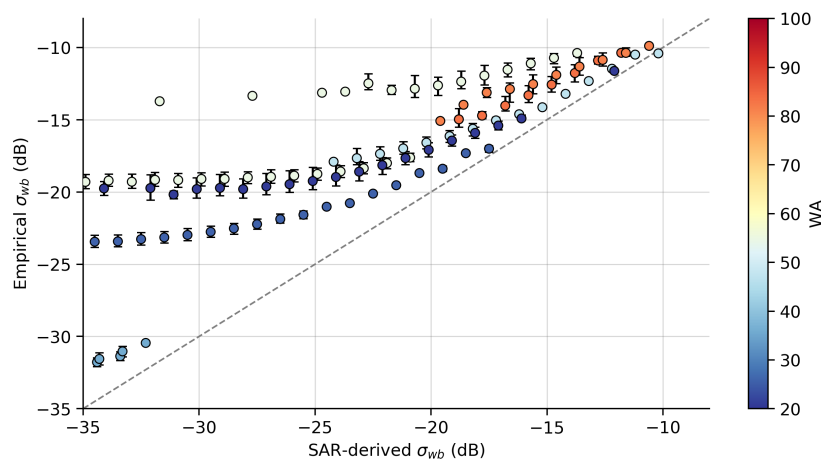


Figure 5. Comparison between σ_{wb} estimated using Equation (5) (Empirical σ_{wb}) versus σ_{wb} estimated from SAR images (SAR-derived σ_{wb}) using a simplified TSM model. The observations were grouped into 1 dB bins, where the circles with vertical bars are mean values and percentiles of 5% and 95%. Colors represent the wave age of observations (see Table 1).

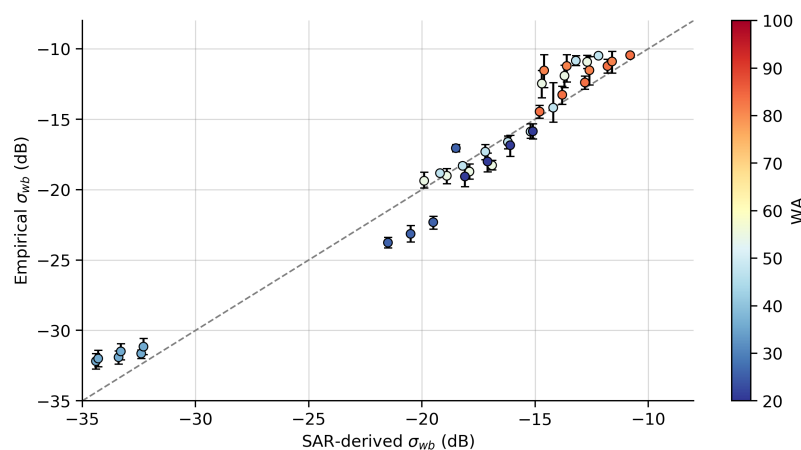


Figure 6. Comparison between σ_{wb} estimated using Equation (5) (Empirical σ_{wb}) versus σ_{wb} estimated from SAR images (SAR-derived σ_{wb}) using the BPM model. The observations were grouped into 1 dB bins, where the circles with vertical bars are mean values and percentiles of 5% and 95%. Colors represent the wave age of observations (see Table 1).

4.2. Estimation of ϵ_t Using the Non-Polarized Contribution

A comparison between associated wind speed (\tilde{U}_{10}) derived from the SAR images with the BPM model using Equation (8) and wind speed obtained from ERA5 (U_{10}) is presented in Figure 7. It can be observed a greater variability in \tilde{U}_{10} values in relation to the same interval of U_{10} values. Although on average \tilde{U}_{10} correspond to the wind field expressed by U_{10} on regional scale, the latter is not able to represent the local variability associated with wind stress on the ocean surface.

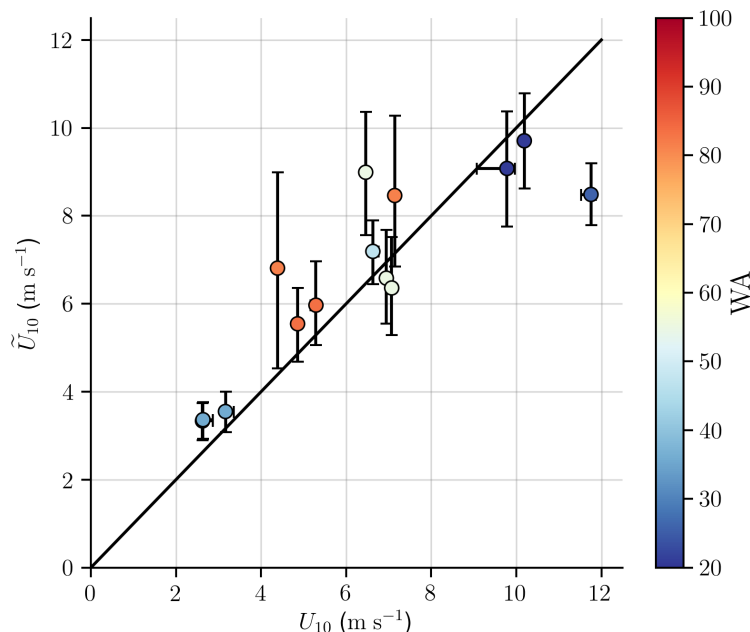


Figure 7. Comparison between (U_{10}) wind speed obtained from ERA5 and (\tilde{U}_{10}) associated wind speed derived from the SAR images with the BPM model using Equation (8). The observations were grouped into 0.5 m s^{-1} bins, where the circles are mean values. Vertical and horizontal bars represent percentiles of 5% and 95%. Colors represent the wave age of observations (see Table 1).

A comparison between ϵ_t derived from the SAR images with the BPM model and the wave dissipation rate S_{ds} integrated over all wavenumbers resolved by WW3 model is presented in Figure 8. The observed σ_{wb} were grouped into 1 dB bins, where circles with vertical bars are mean values and percentiles of 5% and 95% respectively. The wave age is indicated by the color scale, ranging from young wind-sea waves to old swell waves [47].

In wind-sea wave conditions ($WA \lesssim 40$) the relationship between ϵ_t and S_{ds} proved to be approximately linear. In swell-dominated conditions ($WA \gtrsim 40$), it is possible to observe that in general ϵ_t was much higher than S_{ds} by almost an order of magnitude, and showed a much greater scattering around the 1:1 line.

The relationship between ϵ_t and U_{10} estimated from the SAR data is shown in Figure 9. For comparison, two parameterizations of the energy dissipation rate as a function of U_{10} are shown, which are taken from Hanson and Phillips [18] (HP99, red curve) and Hwang and Sletten [12] (HS08, blue curves). The α parameter used in HS08 parameterization corresponds to young stages of wave development or swell-dominated seas (lower, $\alpha = 3.7$) and at fully developed seas (upper, $\alpha = 5.7$). Field estimation measurements reported by Felizardo and Melville [17] (FM95, white squares) and Banner and Morison [19] (BM18, red triangles) are also included.

Comparing the results obtained in this work with the field estimates, we can observe that there is a good agreement between ϵ_t values, especially when compared to the measurements of FM95 and BM18. The methodology used was also able to identify the variability associated with different sea states for the same wind speed range. At wind speeds below 10 m s^{-1} , our estimates were below

the maximum value expected in peak conditions of saturated seas (upper curve HS08), while the parametrization of HP99 proved to be a lower limit for the estimated values. It is important to note that the local wind history was not taken into account in the present study, and therefore the effects of wind time variation on the contribution of ϵ_t could not be assessed, as suggested by [18,48].

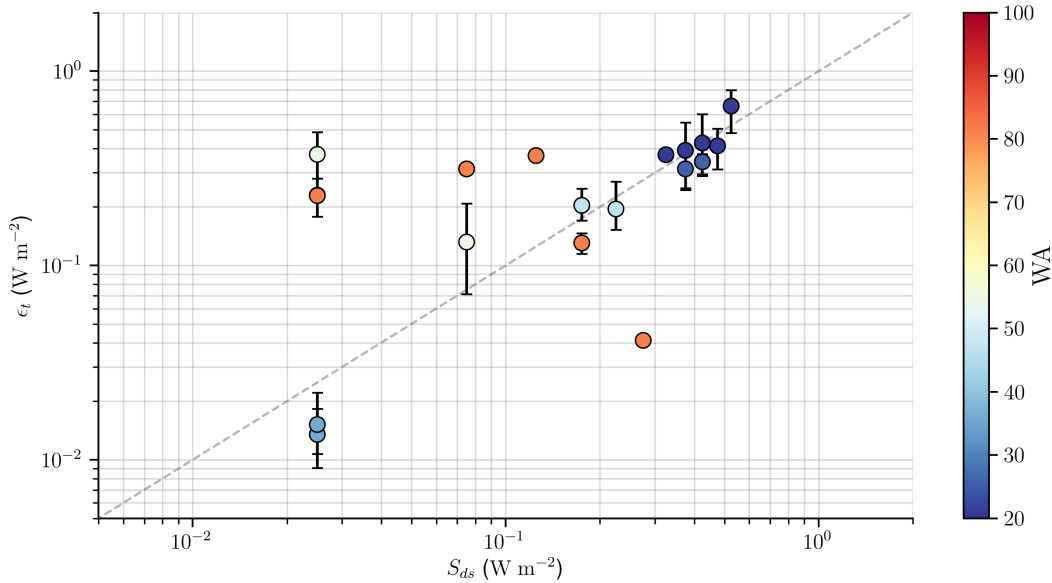


Figure 8. Comparison between total energy dissipation rate derived from SAR images (ϵ_t) and wave dissipation rate calculated by WW3 model (S_{ds}). The observed σ_{wb} were grouped into 1 dB bins, where the circles with vertical bars are mean values and percentiles of 5% and 95%. Colors represent the wave age of observations (see Table 1).

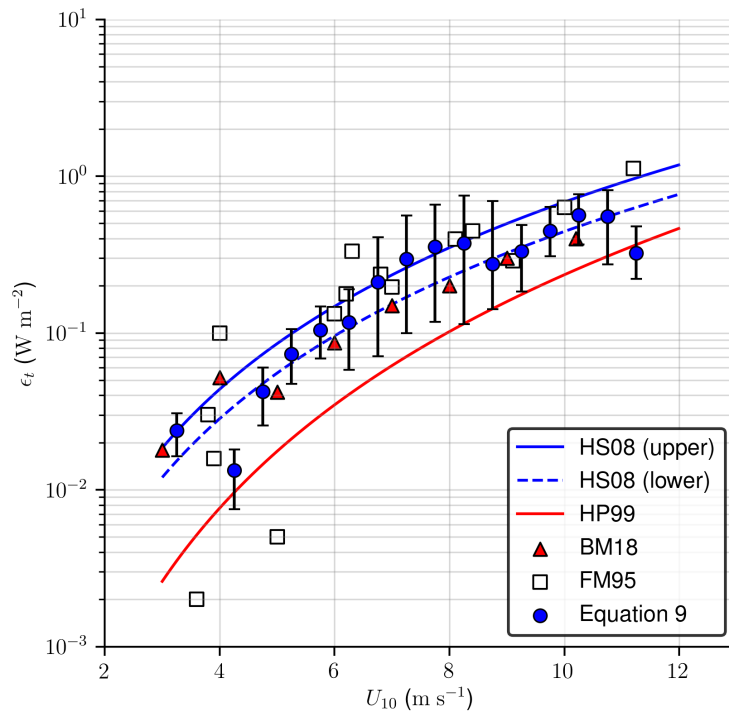


Figure 9. Relationship between total energy dissipation rate estimated from the SAR data versus U_{10} , averaged in 0.5 m s^{-1} wind speed bins. Blue circles with vertical bars are mean values and percentiles of 5% and 95%. Two parameterizations of ϵ_t as a function of wind speed are shown, taken from [18] (HP99, red curve) and [26] (HS08, blue curves). Field estimation measurements taken from [17] (FM95, white squares) and [19] (BM18, red triangles) were also included.

5. Discussion

5.1. Sensitivity of ϵ_t in Relation to p_B Determination

Comparing the results here obtained with those obtained by [32,49], we observe that the percent contribution of σ_{wb} in the VV-polarization shows a similar decreasing behavior in relation to the angle of incidence, while the contribution for HH-polarization tends to stabilize at incidence angles above 30° . Differently from mean values obtained by [32], simplified TSM model underestimated the NP contribution when compared to the BPM model. This difference might be due to the approximate model that does not take into account second order Bragg-scattering effects [27,31]. Several studies confirm that empirical models of the Bragg polarization ratio tend to overestimate p_B when dependent only on the angle of incidence [49,50] (see [32] Figure 1a).

We can also consider the hypothesis that the lower values of ϵ_t obtained using the simplified TSM model correspond to the lower than average values observed in [32]. Since no information was presented by the authors regarding the marine and meteorological conditions associated with these values, this hypothesis cannot be confirmed. As noted by [51], at low incidence angles specular reflection can lead to an increase in the NP component. Moreover, Mouche et al. [39] pointed out that in low wind speed conditions ($U_{10} < 5 \text{ m s}^{-1}$) discrepancies between measured and predicted values can be observed by the used different backscattering models due to a series of assumptions, and that in this case can dominate the modeled return caused by breaking waves.

Another possible source of error in the estimation of σ_{wb} can be the influence of NESZ. A parameter widely used to measure the impact of noise on the measured return is the signal-to-noise ratio (SNR) [52–54]. Espeseth et al. [54] suggests that the SNR must exceed a certain value (of the order of 10 dB) before any polarimetric analysis be performed, as the decomposition of the backscattering return done in this study. The analysis of NESZ is therefore necessary to guarantee that the NP contribution in co-polarized components is not affected by noise. For this analysis, regions of interests (ROIs) were extracted from each SAR scene and the same number of pixels (=900) were selected at random within from each ROI. The SNR was then calculated using the mean value of σ_0 and the mean value of NESZ of the pixels extracted from each ROI, as $\text{SNR} = (\sigma_0 - \text{NESZ})/\text{NESZ}$.

Figure 10 shows the variation of the mean value of the σ_0 for HH and VV polarizations as a function of the SNR (left) and mean incidence angle (right). It is possible to observe that the values of SNR in VV-polarization were above 10 dB in all ROIs, and that none of the ROIs had σ_0 values below the NESZ (SNR equal to 0 dB), the smallest difference corresponding to approximately 10 dB at high incident angles ($>42^\circ$). Regarding the HH-polarization, most ROIs have SNR above 10 dB while a few fall below this value. These ROIs are within scenes for which wind speed conditions had magnitude of 3 m s^{-1} at high angles of incidence, where backscatter returns are expected to be low and the noise is higher [54]. However, the measured signal remained 6 dB above of noise floor, which can be considered an adequate value and under minimum influence of noise [53]. Therefore, we can conclude that the differences in σ_{wb} are not caused by noise and should be exclusively due to the methodology used to determinate p_B .

5.2. Comparison of ϵ_t with Wave Model Outputs

Two main factors may suggest the discrepancy of ϵ_t estimates on different wave conditions: (1) wave breaking may not be the dominant mechanism for wave dissipation, or (2) there was an overestimation of the σ_{wb} , and consequently of the ϵ_t for old-sea waves. Another possible source of uncertainty in the ϵ_t estimation comes from the estimation of α parameter, given the large uncertainty associate with this quantity that could in some cases be on the order of 100% [12].

Banner and Morrison [19] obtained similar results in the comparison between the contribution of the breaking wave dissipation rate to the total energy dissipation rate (Figure 8), when reanalyzing Sutherland and Melville [24] data set to investigate the relative contribution of microscale breakers to ϵ_t . The authors found that wave breaking is responsible for almost all energy dissipation during the

development of waves, and that in old seas the breaking of waves contributes only to a small fraction of ϵ_t . The greatest contribution to the total energy dissipation rate would then be related mainly to other hydrodynamic processes, which include the influence of surface waves on the Reynolds shear, turbulence and the transfer of energy between waves at different scales [19].

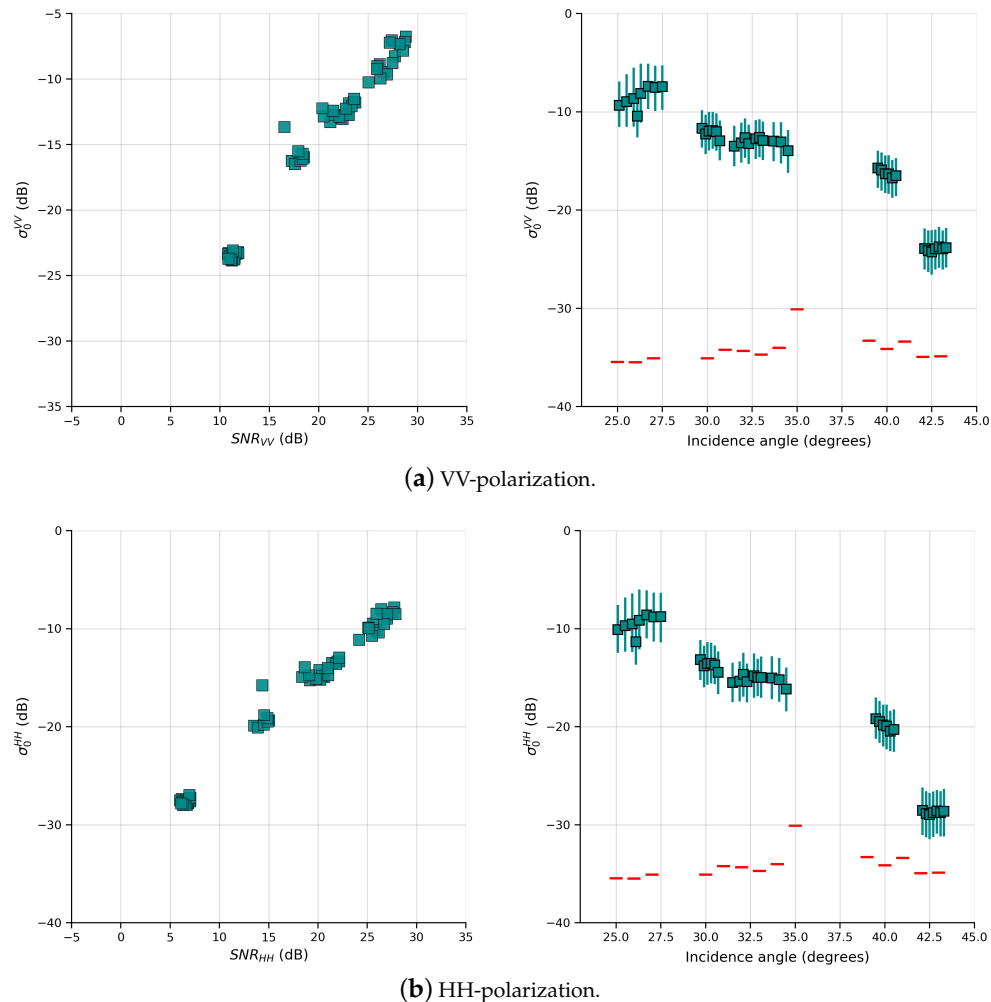


Figure 10. (Left) Mean σ_0 values versus the SNR in dB for VV (a) and HH (b) polarizations. (Right) Mean σ_0 values and percentiles of 5% and 95% versus the mean incidence angle in each ROI for VV (a) and HH (b) polarizations. Red lines represent the estimated NESZ as function of mean incidence angle.

There are not many studies that estimate the impact of the presence of swell waves on the value of σ_0 measured in different polarizations. Durden and Vesecky [55] evaluated the impact of the presence of swell in the HH and VV polarizations, at different SAR frequencies, and concluded that the effects are more significant at low frequencies (L band) and low incidence angles. At high frequencies (for example, K_u band) and high incidence angles, the effects were almost negligible. Hwang and Plant [40] analyzed the effect of waves at low-to-moderate incidence angles for different SAR frequencies, using their empirical wave spectrum, and found that the effect of swell on σ_0 is less than 3 dB for wind speeds above 4 m s^{-1} , for HH and VV polarizations (C-band).

Results presented in [56] showed a strong correlation between the Bragg polarization ratio and wave steepness and significant wave height. When the steepness increases, the polarization ratio also increases. Still according to [56], the polarization difference has a very low correlation with the wave parameters. The p_B estimates in [40] (see their Figure 5) also indicate an increase in the polarization ratio in the presence of swell. The main effect of this increase in the polarization ratio, however,

corresponds to a greater variance in the NRCS measurements, as can be seen in the distribution of the values of the NP contribution in Figure 5. The combined results then indicate that swell is mainly responsible for the greatest variance in our estimates of ϵ_t , and that the discrepancy between the values of ϵ_t and S_{ds} are expected since in these cases the contribution to total energy dissipation comes from mechanisms other than the wave breaking.

6. Conclusions

In this study, we investigated the use of the SAR co-polarized data to estimate the energy dissipation rate associated with wave breaking processes in the ocean surface, particularly for the low to moderate wind conditions (U_{10} below 10 m s^{-1}). The dissipation source term estimated using numerical wave model (WW3) was adopted as a reference for energy dissipation due to the breaking of waves, while the SAR data set considers different imaging configurations and environmental conditions. Under prevailing swell conditions, there was a greater variance in the estimate of the NP contribution, and consequently in the rate of energy dissipation. This results can mean that: (i) previous results have found a low dissipation rate during swell, or (ii) the method overestimates the dissipation rate during swell, and these variations may be associated with the variation in the backscatter return due to the presence of the swell. However, this latter process was not quantified in the present work. We obtained satisfactory results in all sea conditions when compared with previous measurements reported in the literature, although in swell waves conditions was not possible to associate energy dissipation only with wave breaking processes.

The estimation of the Bragg polarization ratio proved to be one of the most important steps in this approach. The choice of an electromagnetic model that does not calculate properly the co-polarized backscatter tends to underestimate the NP contribution, and consequently the total energy dissipation rate. The present published models can adequately represent the VV-polarization, but generally are not as good in the HH-polarization. Electromagnetic models capable of more accurate estimates may require more computational time to process each image. The model adopted in this work, which was run on a normal desktop computer, was able to process the entire methodology with a low processing time (less than 10 min per scene).

The estimates of ϵ_t here derived were of the same order of magnitude as previous measurements published in the literature derived from in situ methods, with the advantage of being able to cover large areas of the ocean surface. With the increase in the number of satellites carrying polarimetric SAR sensors, this methodology offers one another possibility for an extensive estimation of wave breaking and energy dissipation from space.

Author Contributions: Conceptualization, R.D.V. and J.A.L.; Methodology, R.D.V. and J.A.L.; Software, R.D.V. and J.T.C.; Validation, R.D.V.; Formal analysis, R.D.V., J.A.L. and F.N.; Investigation, R.D.V., J.A.L. and J.T.C.; Resources, F.N.; Data curation, R.D.V. and J.T.C.; Writing—original draft preparation, R.D.V.; Writing—review and editing, J.A.L., J.C.T. and F.N.; Supervision, J.A.L. All authors have read and agreed to the published version of the manuscript.

Funding: This work was partly funded by the Coordenação de Aperfeiçoamento de Pessoal de Nível Superior—Brasil (CAPES) finance code 001 and by the European Space Agency (ESA) under the ESA-MOST (Chinese Ministry of Science and Technology) Dragon-5 cooperation project ID 57979.

Acknowledgments: The authors would like to thank the MacDonald Dettwiler and Associates (MDA) and the Canadian Space Agency (CSA) for providing the satellite SAR data used in this study. We would also like to thank P. Sobieski, Université Catholique de Louvain, who provided the BPM software code and we would also like to thank Maurizio Migliaccio and Andrea Buono, Università degli Studi di Napoli Parthenope, for the overall support to this work. The authors would also like to thank the Brazilian Navy Hydrographic Center for providing metocean buoy data through PNBIOA program, NDBC for providing the metocean buoy data free of charge and ECMWF for the access to ERA5 outputs. The authors would like to thank three anonymous reviewers which provided excellent constructive suggestions for the improvement of the manuscript.

Conflicts of Interest: The authors declare no conflict of interest. The funders had no role in the design of the study; in the collection, analyses, or interpretation of data; in the writing of the manuscript, or in the decision to publish the results.

Abbreviations

The following abbreviations are used in this manuscript:

AOI	Angle of incidence
BPM	Boundary perturbation model
CSA	Canadian Space Agency
dB	Decibel
ECMWF	European Center for Medium-Range Weather Forecasts
HH	horizontal transmit-horizontal receive
MDA	MacDonald Dettwiler and Associates
MSS	Mean square slope
NESZ	Noise-equivalent sigma zero
NP	Non-polarized
NRCS	Normalized radar cross section
NCEP	National Centers for Environmental Prediction
NDBC	National Data Buoy Center
NOAA	National Oceanic and Atmospheric Administration
PD	Polarized difference
PNBOIA	National Buoy Program of the Brazilian Navy
RS-2	RadarSAT-2
ROI	Region of interest
SAR	Synthetic aperture radar
SLC	Single-look complex
SST	Sea surface temperature
TSM	Two-scale model
VV	Vertical transmit-vertical receive
WW3	WAVEWATCH III

Appendix A

Kudryavtsev et al. [27] showed that at moderate incidence angles ($\theta > 25^\circ$) and for small MSS of the tilting waves (waves with wavelength longer than a few times the Bragg wavelength), the Bragg polarization ratio can be significantly simplified to:

$$p_B = \frac{|G_{HH}|^2}{|G_{VV}|^2} \times \frac{1 + g_{HH}s_i^2}{1 + g_{VV}s_i^2} \quad (\text{A1})$$

where G_{pp} are scattering coefficients for co-polarized components, s_i^2 is the MSS of tilting waves in the incidence plane direction, and g_{pp} are polarization coefficients accounting for the impact of the tilting waves in the second order. Scattering coefficients for the sea surface (in C-Band) can be calculated from:

$$|G_{VV}|^2 = \frac{\cos^4 \theta (1 + \sin^2 \theta)}{(\cos \theta + 0.111)^4} \quad (\text{A2})$$

$$|G_{HH}|^2 = \frac{\cos^4 \theta}{(0.111 \cos \theta + 1)^4} \quad (\text{A3})$$

assuming that the dielectric constant of seawater is large, in particular equal 81 [57]. Polarization coefficients, evaluated from (A2) and (A3), are defined as:

$$g_{VV} = \frac{\tan^4 \theta}{2|G_{VV}|^2} \frac{\partial^2}{\partial \theta^2} \left(\frac{|G_{VV}|^2}{\tan^4 \theta} \right) \quad (\text{A4})$$

$$g_{HH} = \frac{\tan^4 \theta}{2|G_{HH}|^2} \frac{\partial^2}{\partial \theta^2} \left(\frac{|G_{HH}|^2}{\tan^4 \theta} \right) + \frac{2}{\sin^2 \theta} \left| \frac{G_{VV}}{G_{HH}} \right| \quad (\text{A5})$$

Assuming that the slopes of the waves with small MSS are almost isotropic [32], and using the empirical formulation described in [58], we can calculate the MSS by:

$$s_i^2 = 2.25 \times 10^{-3} \ln(\beta^{-2} k_{br} U_{10}^2 / 4g) \quad (\text{A6})$$

where U_{10} is the wind speed from ERA5 data set, g is the gravity acceleration, k_{br} is the Bragg wavenumber, $\beta = U_{10}(k_p/g)^{1/2}$ is the inverse wave age, and $k_p = g/U_{10}^2$ is the spectral peak wavenumber [59].

References

- Melville, W.K. The role of surface-wave breaking in air-sea interaction. *Annu. Rev. Fluid Mech.* **1996**, *28*, 279–321. [[CrossRef](#)]
- Zappa, C.J.; McGillis, W.R.; Raymond, P.A.; Edson, J.B.; Hints, E.J.; Zemelink, H.J.; Dacey, J.W.H.; Ho, D.T. Environmental turbulent mixing controls on air-water gas exchange in marine and aquatic systems. *Geophys. Res. Lett.* **2007**, *34*. [[CrossRef](#)]
- Esters, L.; Landwehr, S.; Sutherland, G.; Bell, T.G.; Christensen, K.H.; Saltzman, E.S.; Miller, S.D.; Ward, B. Parameterizing air-sea gas transfer velocity with dissipation. *J. Geophys. Res.* **2017**, *122*, 3041–3056. [[CrossRef](#)]
- Craig, P.D.; Banner, M.L. Modeling wave-enhanced turbulence in the ocean surface layer. *J. Phys. Oceanogr.* **1994**, *24*, 2546–2559. [[CrossRef](#)]
- Terray, E.; Donelan, M.; Agrawal, Y.; Drennan, W.; Kahma, K.; Williams, A.; Hwang, P.; Kitaigorodskii, S. Estimates of kinetic energy dissipation under breaking waves. *J. Phys. Oceanogr.* **1996**, *26*, 792–807. [[CrossRef](#)]
- Holding, T.; Ashton, I.G.; Shutler, J.D.; Land, P.E.; Nightingale, P.D.; Rees, A.P.; Brown, I.; Piolle, J.F.; Kock, A.; Bange, H.W.; et al. The FluxEngine air-sea gas flux toolbox: Simplified interface and extensions for in situ analyses and multiple sparingly soluble gases. *Ocean Sci.* **2019**, *15*, 1707–1728. [[CrossRef](#)]
- Terrill, E.J.; Melville, W.K.; Stramski, D. Bubble entrainment by breaking waves and their influence on optical scattering in the upper ocean. *J. Geophys. Res.* **2001**, *106*, 16815–16823. [[CrossRef](#)]
- Melville, W.K.; Matusov, P. Distribution of breaking waves at the ocean surface. *Nature* **2002**, *417*, 58–63. doi:10.1038/417058a.
- Anguelova, M.D.; Webster, F. Whitecap coverage from satellite measurements: A first step toward modeling the variability of oceanic whitecaps. *J. Geophys. Res.* **2006**, *111*. [[CrossRef](#)]
- Toba, Y. Quantitative expression of the breaking of wind waves on the sea surface. *Rec. Oceanogr. Works Jpn.* **1973**, *12*, 1–11.
- Wu, J. Variations of whitecap coverage with wind stress and water temperature. *J. Phys. Oceanogr.* **1988**, *18*, 1448–1453. [[CrossRef](#)]
- Hwang, P.A.; Sletten, M.A. Energy dissipation of wind-generated waves and whitecap coverage. *J. Geophys. Res.* **2008**, *113*. [[CrossRef](#)]
- Hasselmann, K. On the spectral dissipation of ocean waves due to white capping. *Bound.-Layer Meteorol.* **1974**, *6*, 107–127. [[CrossRef](#)]
- Phillips, O.M. Spectral and statistical properties of the equilibrium range in wind-generated gravity waves. *J. Fluid Mech.* **1985**, *156*, 505–531. [[CrossRef](#)]
- Tolman, H.; Chalikov, D. Source terms in a third-generation wind wave model. *J. Phys. Oceanogr.* **1996**, *26*, 2497–2518. [[CrossRef](#)]
- Ardhuin, F.; Rogers, E.; Babanin, A.V.; Filipot, J.F.; Magne, R.; Roland, A.; van der Westhuysen, A.; Queffelec, P.; Lefevre, J.M.; Aouf, L.; et al. Semiempirical dissipation source functions for ocean waves. Part I: Definition, calibration, and validation. *J. Phys. Oceanogr.* **2010**, *40*, 1917–1941. [[CrossRef](#)]
- Felizardo, F.C.; Melville, K.W. Correlations between ambient noise and the ocean surface wave field. *J. Phys. Oceanogr.* **1995**, *25*, 513–532. [[CrossRef](#)]
- Hanson, J.L.; Phillips, O.M. Wind sea growth and dissipation in the open ocean. *J. Phys. Oceanogr.* **1999**, *29*, 1633–1648. [[CrossRef](#)]
- Banner, M.L.; Morison, R.P. On the upper ocean turbulent dissipation rate due to microscale breakers and small whitecaps. *Ocean Model.* **2018**, *126*, 63–76. [[CrossRef](#)]
- Guan, C.; Hu, W.; Sun, J.; Li, R. The whitecap coverage model from breaking dissipation parametrizations of wind waves. *J. Geophys. Res.* **2007**, *112*. [[CrossRef](#)]

21. Banner, M.L.; Babanin, A.V.; Young, I.R. Breaking probability for dominant waves on the sea surface. *J. Phys. Oceanogr.* **2000**, *30*, 3145–3160.
22. Manasseh, R.; Babanin, A.V.; Forbes, C.; Rickards, K.; Bobevski, I.; Ooi, A. Passive acoustic determination of wave-breaking events and their severity across the spectrum. *J. Atmos. Ocean. Technol.* **2006**, *23*, 599–618. [[CrossRef](#)]
23. Jessup, A.T.; Zappa, C.; Loewen, M.; Hesany, V. Infrared remote sensing of breaking waves. *Nature* **1997**, *385*, 52–55. [[CrossRef](#)]
24. Sutherland, P.; Melville, W.K. Field measurements of surface and near-surface turbulence in the presence of breaking waves. *J. Phys. Oceanogr.* **2015**, *45*, 943–965. [[CrossRef](#)]
25. Phillips, O.M.; Posner, F.L.; Hansen, J.P. High range resolution radar measurements of the speed distribution of breaking events in wind-generated ocean waves: Surface impulse and wave energy dissipation rates. *J. Phys. Oceanogr.* **2001**, *31*, 450–460. [[CrossRef](#)]
26. Hwang, P.A.; Sletten, M.A.; Toporkov, J.V. Breaking wave contribution to low grazing angle radar backscatter from the ocean surface. *J. Geophys. Res.* **2008**, *113*. [[CrossRef](#)]
27. Kudryavtsev, V.N.; Hauser, G.; Caudal, G.; Chapron, B. A semiempirical model of the normalized radar cross-section of the sea surface 1. Background model. *J. Geophys. Res.* **2003**, *108*, 8054–8077. [[CrossRef](#)]
28. Hwang, P.A.; Zhang, B.; Perrie, W. Depolarized radar return for breaking wave measurement and hurricane wind retrieval. *Geophys. Res. Lett.* **2010**, *37*. [[CrossRef](#)]
29. Kudryavtsev, V.N.; Chapron, B.; Myasoedov, A.G.; Collard, F.; Johannessen, J.A. On dual co-polarized SAR measurements of the ocean surface. *IEEE Geosci. Remote Sens. Lett.* **2013**, *10*, 761–765. [[CrossRef](#)]
30. Monahan, E.C.; O’Muircheartaigh, I.G. Whitecaps and the passive remote sensing of the ocean surface. *Int. J. Remote Sens.* **1986**, *7*, 627–642. [[CrossRef](#)]
31. Kudryavtsev, V.; Kozlov, I.; Chapron, B.; Johannessen, J.A. Quad-polarization SAR features of ocean currents. *J. Geophys. Res.* **2014**, *119*, 6046–6065. [[CrossRef](#)]
32. Kudryavtsev, V.N.; Fan, S.; Zhang, B.; Mouche, A.A.; Chapron, B. On quad-polarized SAR measurements of the ocean surface. *IEEE Trans. Geosci. Remote Sens.* **2019**, *57*, 8362–8370. [[CrossRef](#)]
33. Macdonald, Dettwiler and Associates Ltd. *RADARSAT-2 Product Format Definition*; Technical Report RN-SP-52-1238; MacDonald, Dettwiler and Associates Ltd.: Richmond, BC, Canada, 2018.
34. Hajnsek, I.; Pottier, E.; Cloude, S.R. Inversion of surface parameters from polarimetric SAR. *IEEE Trans. Geosci. Remote Sens.* **2003**, *41*, 727–744. [[CrossRef](#)]
35. Hersbach, H.; Bell, B.; Berrisford, P.; Shoji, H.; András, H.; Joaquín, M.-S.; Julien, N.; Carole, P.; Raluca, R.; Dinand, S.; et al. The ERA5 global reanalysis. *Q. J. R. Meteorol. Soc.* **2020**, *146*, 1999–2049. [[CrossRef](#)]
36. Komen, G.J.; Cavaleri, L.; Donelan, M.; Hasselmann, K.; Hasselmann, S.; Janssen, P.A.E.M. *Dynamics and Modelling of Ocean Waves*; Cambridge University Press: Cambridge, UK, 1994; 532p.
37. The WAVEWATCH III[®] Development Group. *User Manual and System Documentation of WAVEWATCH III[®] Version 5.16*; Tech. Note 329; NOAA/NWS/NCEP/MMAB: College Park, MD, USA, 2016.
38. Phillips, O.M. Radar returns from the sea surface—Bragg scattering and breaking waves. *J. Phys. Oceanogr.* **1988**, *18*, 1065–1074. [[CrossRef](#)]
39. Mouche, A.A.; Hauser, D.; Kudryavtsev, V. Radar scattering of the ocean surface and sea-roughness properties: A combined analysis from dual-polarizations airborne radar observations and models in C band. *J. Geophys. Res.* **2006**, *111*, 1–18. [[CrossRef](#)]
40. Hwang, P.A.; Plant, W.J. An analysis of the effects of swell and surface roughness spectra on microwave backscatter from the ocean. *J. Geophys. Res.* **2010**, *115*. [[CrossRef](#)]
41. Hwang, P.A.; Fois, F. Surface roughness and breaking wave properties retrieved from polarimetric microwave radar backscattering. *J. Geophys. Res.* **2015**, *1*, 3640–3657. [[CrossRef](#)]
42. Guissard, A.; Sobieski, P.; Baufays, C. A unified approach to bistatic scattering for active and passive remote sensing of rough ocean surfaces. *Trends Geophys. Res.* **1992**, *1*, 43–68.
43. Nunziata, F.; Sobieski, P.; Migliaccio, M. The two-scale BPM scattering model for sea biogenic slicks contrast. *IEEE Trans. Geosci. Remote Sens.* **2009**, *47*, 1949–1956. [[CrossRef](#)]
44. Montuori, A.; Nunziata, F.; Migliaccio, M.; Sobieski, P. X-Band two-scale sea surface scattering model to predict the contrast due to an oil slick. *IEEE J. Sel. Top. Appl. Earth Obs. Remote Sens.* **2016**, *9*, 4970–4978. [[CrossRef](#)]

45. Elfouhaily, T.; Chapron, B.; Katsaros, K.; Vandemark, D. A unified directional spectrum for long and short wind-driven waves. *J. Geophys. Res.* **1997**, *102*, 15781–15796. [[CrossRef](#)]
46. Wu, J. Wind-stress coefficients over sea surface near neutral conditions: A revisit. *J. Phys. Oceanogr.* **1980**, *10*, 727–740. [[CrossRef](#)]
47. de Farias, E.G.G.; Lorenzetti, J.A.; Chapron, B. Swell and wind-sea distributions over the mid-latitude and tropical North Atlantic for the period 2002–2008. *Int. J. Oceanogr.* **2012**, *2012*, 306723. [[CrossRef](#)]
48. Callaghan, A.H. On the relationship between the energy dissipation rate of surface-breaking waves and oceanic whitecap coverage. *J. Phys. Oceanogr.* **2018**, *48*, 2609–2626. [[CrossRef](#)]
49. Mouche, A.A.; Hauser, D.; Daloz, J.; Guerin, C. Dual-polarization measurements at C-band over the ocean: Results from airborne radar observations and comparison with ENVISAT ASAR data. *IEEE Trans. Geosci. Remote Sens.* **2005**, *43*, 753–769. [[CrossRef](#)]
50. Liu, G.; Yang, X.; Li, X.; Zhang, B.; Pichel, W.; Li, Z.; Zhou, X. A systematic comparison of the effect of polarization ratio models on sea surface wind retrieval from C-band synthetic aperture radar. *IEEE J. Sel. Top. Appl. Earth Obs. Remote Sens.* **2013**, *6*, 1100–1108. [[CrossRef](#)]
51. Mouche, A.A.; Chapron, B.; Reul, N.; Hauser, D.; Quilfen, Y. Importance of the sea surface curvature to interpret the normalized radar cross section. *J. Geophys. Res.* **2007**, *112*. [[CrossRef](#)]
52. Freeman, A. The effects of noise on polarimetric SAR data. In Proceedings of the IGARSS'93—IEEE International Geoscience and Remote Sensing Symposium, Tokyo, Japan, 18–21 August 1993; pp. 799–802. [[CrossRef](#)]
53. Minchew, B.; Jones, C.E.; Holt, B. Polarimetric analysis of backscatter from the Deepwater Horizon oil spill using L-band synthetic aperture radar. *IEEE Trans. Geosci. Remote Sens.* **2012**, *50*, 3812–3830. [[CrossRef](#)]
54. Espeseth, M.M.; Brekke, C.; Jones, C.E.; Holt, B.; Freeman, A. The impact of system noise in polarimetric SAR imagery on oil spill observations. *IEEE Trans. Geosci. Remote Sens.* **2020**, *58*, 4194–4214. [[CrossRef](#)]
55. Durden, S.; Vesecky, J. A physical radar cross-section model for a wind-driven sea with swell. *IEEE J. Ocean. Eng.* **1985**, *10*, 445–451. [[CrossRef](#)]
56. Zhang, B.; Perrie, W.; He, Y. Wind speed retrieval from RADARSAT-2 quad-polarization images using a new polarization ratio model. *J. Geophys. Res.* **2011**, *116*. [[CrossRef](#)]
57. Plant, W.J. A two-scale model of short wind-generated waves and scatterometry. *J. Geophys. Res.* **1986**, *91*, 10735–10749. [[CrossRef](#)]
58. Phillips, O.M. *The Dynamics of the Upper Ocean*; Cambridge University Press: Cambridge, UK, 1977; 344p.
59. Pierson, W.; Moskowitz, L. A proposed spectral form for fully developed wind seas based on the similarity theory of S. A. Kitaigorodskii. *J. Geophys. Res.* **1964**, *69*, 5181–5190. [[CrossRef](#)]

Publisher's Note: MDPI stays neutral with regard to jurisdictional claims in published maps and institutional affiliations.



© 2020 by the authors. Licensee MDPI, Basel, Switzerland. This article is an open access article distributed under the terms and conditions of the Creative Commons Attribution (CC BY) license (<http://creativecommons.org/licenses/by/4.0/>).