

RESEARCH

Open Access



A blood DNA methylation biomarker for predicting short-term risk of cardiovascular events

Andrea Cappozzo¹, Cathal McCrory², Oliver Robinson³, Anna Freni Sterrantino^{3,4}, Carlotta Sacerdote⁵, Vittorio Krogh⁶, Salvatore Panico⁷, Rosario Tumino⁸, Licia Iacoviello^{9,10}, Fulvio Ricceri^{11,12}, Sabina Sieri⁶, Paolo Chiodini¹³, Gareth J. McKay¹⁴, Amy Jayne McKnight¹⁴, Frank Kee¹⁴, Ian S. Young¹⁴, Bernadette McGuinness¹⁴, Eileen M. Crimmins¹⁵, Thalida Em Arpawong¹⁵, Rose Anne Kenny², Aisling O'Halloran², Silvia Polidoro¹⁶, Giuliana Solinas¹⁷, Paolo Vineis³, Francesca Ieva^{1,18} and Giovanni Fiorito^{2,3,17*}

Abstract

Background: Recent evidence highlights the epidemiological value of blood DNA methylation (DNAm) as surrogate biomarker for exposure to risk factors for non-communicable diseases (NCD). DNAm surrogate of exposures predicts diseases and longevity better than self-reported or measured exposures in many cases. Consequently, disease prediction models based on blood DNAm surrogates may outperform current state-of-the-art prediction models. This study aims to develop novel DNAm surrogates for cardiovascular diseases (CVD) risk factors and develop a composite biomarker predictive of CVD risk. We compared the prediction performance of our newly developed risk score with the state-of-the-art DNAm risk scores for cardiovascular diseases, the 'next-generation' epigenetic clock DNAmGrimAge, and the prediction model based on traditional risk factors SCORE2.

Results: Using data from the EPIC Italy cohort, we derived novel DNAm surrogates for BMI, blood pressure, fasting glucose and insulin, cholesterol, triglycerides, and coagulation biomarkers. We validated them in four independent data sets from Europe and the USA. Further, we derived a *DNAmCVDscore* predictive of the time-to-CVD event as a combination of several DNAm surrogates. ROC curve analyses show that *DNAmCVDscore* outperforms previously developed DNAm scores for CVD risk and SCORE2 for short-term CVD risk. Interestingly, the performance of DNAmGrimAge and *DNAmCVDscore* was comparable (slightly lower for DNAmGrimAge, although the differences were not statistically significant).

Conclusions: We described novel DNAm surrogates for CVD risk factors useful for future molecular epidemiology research, and we described a blood DNAm-based composite biomarker, *DNAmCVDscore*, predictive of short-term cardiovascular events. Our results highlight the usefulness of DNAm surrogate biomarkers of risk factors in epigenetic epidemiology to identify high-risk populations. In addition, we provide further evidence on the effectiveness of prediction models based on DNAm surrogates and discuss methodological aspects for further improvements. Finally,

*Correspondence: gffiorito@uniss.it; giovanni.fiorito85@gmail.com

¹⁷ Laboratory Biostatistics, Department of Biomedical Sciences, University of Sassari, Via Padre Manzella 4, Sassari, Italy
Full list of author information is available at the end of the article



© The Author(s) 2022. **Open Access** This article is licensed under a Creative Commons Attribution 4.0 International License, which permits use, sharing, adaptation, distribution and reproduction in any medium or format, as long as you give appropriate credit to the original author(s) and the source, provide a link to the Creative Commons licence, and indicate if changes were made. The images or other third party material in this article are included in the article's Creative Commons licence, unless indicated otherwise in a credit line to the material. If material is not included in the article's Creative Commons licence and your intended use is not permitted by statutory regulation or exceeds the permitted use, you will need to obtain permission directly from the copyright holder. To view a copy of this licence, visit <http://creativecommons.org/licenses/by/4.0/>. The Creative Commons Public Domain Dedication waiver (<http://creativecommons.org/publicdomain/zero/1.0/>) applies to the data made available in this article, unless otherwise stated in a credit line to the data.

our results encourage testing this approach for other NCD diseases by training and developing DNAm surrogates for disease-specific risk factors and exposures.

Keywords: DNA methylation, Molecular epidemiology, Risk scores, Surrogate biomarkers, Cardiovascular risk, Epigenetics

Background

Emerging epidemiological evidence indicates that composite scores based on blood DNA methylation (DNAm) at different CpG sites are valuable biomarkers to predict complex traits and identify high-risk populations [1–4]. DNAm scores are usually built to model the association of CpG sites with the trait or disease of interest via epigenome-wide association studies (EWAS). However, EWAS suffer from a lack of replication in independent data sets [5], with few exceptions like the well-known DNAm CpGs associated with smoking [6, 7]. Further, it is unclear how the disease risk tracked by DNAm is complementary or redundant with other risk factors for non-communicable diseases (NCDs). In fact, the inclusion of DNAm scores in prediction models often leads to null or marginal prediction improvement compared to traditional models based on classical risk factors like the Framingham Risk Score and SCORE2 for cardiovascular diseases (CVD) [1, 4, 8–10].

In contrast, it has been consistently shown that DNAm scores for estimating individual biological age, named epigenetic clocks [11–15], are associated with several risk factors for NCDs (smoking, alcohol intake, low physical activity, obesity, socio-economic position, and job characteristics) [16–18], and perform very well for predicting ageing-related diseases and all-cause mortality [19, 20]. These results may be explained by how ‘next-generation’ epigenetic clocks like DNAmPhenoAge and DNAmGrimAge have been built [11, 12].

Contrary to classical DNAm scores for NCDs, ‘next-generation’ epigenetic clocks use a two-step approach: (1) development of DNAm surrogates for NCDs risk factors and biomarkers associated with all-cause mortality; (2) development of DNAm epigenetic clocks as a weighted combination of DNAm surrogates. Such a procedure leads DNAm composite scores to be more reliable and reproducible across different cohorts. The best performing epigenetic clock, called DNAGrimAge, incorporates DNAm scores for seven circulating proteins and smoking pack-years, and it has been consistently associated with longevity and numerous age-related diseases, and functional and cognitive outcomes [11, 19, 21]. Other examples of DNAm surrogate of exposures and risk factors include the DNAm biomarkers identified by Colicino and colleagues for cumulative lead exposure [22], the one derived by Marioni and colleagues for several

longevity-related and inflammatory proteins [23–26], the classification by Guida and colleagues of current, former (including time since smoking cessation) and never smokers based on blood DNAm biomarkers [7], and the recent characterisation of electronic health records phenotypes by Thompson and colleagues [27].

DNAm surrogates can outperform original exposure measurements in predicting diseases in association studies. For example, Zhang and colleagues show that a combination of smoking-associated DNAm markers predicts lung cancer incidence better than self-reported smoking [28]. In addition, Green and colleagues suggest that a DNAm proxy for C-reactive protein (CRP) predicts structural neuroimaging brain measures better than blood measured CRP [29]. DNAm characteristics can explain these counter-intuitive results: (1) DNAm is a more reliable biomarker than self-reported exposure (i.e. in the case of smoking or other exposures measured through self-reported questionnaires); (2) DNAm variability includes individual genetic and metabolic profiles that can influence individual response to exposure and stressors (i.e. the same amount of exposure can be more or less dangerous based on genetic profile and general state of health); (3) DNAm variations reflect long-term exposures and, in some cases, are more stable in time (e.g. in the case of inflammatory status, the levels of one of the best predictive blood biomarkers, CRP, can fluctuate within a single day).

Because of the way ‘next-generation’ epigenetic clocks have been built (i.e. trained on a set of biomarkers associated with longevity), they are non-specific biomarkers that mirror an individual general state of health rather than the risk for any specific diseases. This study aims to evaluate the possibility of developing disease-specific blood DNAm biomarkers, training a DNAm score on disease-specific exposure and risk factors (rather than on all-cause mortality, as has been done for ‘next-generation’ epigenetic clocks). Specifically, we aim to: (1) develop a DNAm composite biomarker for predicting cardiovascular events trained on CVD-specific risk factors (named *DNAmCVDscore*), and (2) to compare its predictive performance for incident CVD events with (a) the ‘next-generation’ epigenetic clock DNAmGrimAge; (b) a DNAm score for CVD based on a single-step approach developed by Fernández-Sanlés et al., named methylation risk score (MRS) [1]; and (c) a prediction model based on

traditional CVD risk factors (chronological age, sex, diabetes status, smoking, systolic blood pressure, total and HDL cholesterol levels), named SCORE2 [10]. Beyond the main study aims, we investigated the association of *DNAmCVDscore* with COVID-19 susceptibility and severity.

Results

Study sample and study design description

This study sample includes DNAm data from seven studies previously described [17, 19, 30–35], which is summarised in Table 1.

EPIC Italy, the training set, contains 1,803 individuals (62% women), age range from 35 to 75 years, including 295 (16.4%) incident CVD cases [17]. The average (standard deviation sd) time from recruitment to CVD events was 7.6 (3.8) years. The average (sd) follow-up time was 11.3 (5.6) years.

EXPOsOMICS CVD is a case–control study nested in the EPIC Italy cohort, including 160 incident CVD cases and age- and sex-matched controls (not overlapping with EPIC Italy training set), age range from 35 to 70 years (53% women) [30]. The average (sd) time from recruitment to CVD events was 9.6 (3.9) years. The average (sd) follow-up time was 12 (4) years.

TILDA includes data for 490 individuals, originally selected to investigate the association of epigenetic biomarkers of biological ageing with intergenerational socio-economic trajectories, with individuals equally distributed among four socio-economic categories, age range from 50 to 80 years (50% women) [19].

The United Kingdom Household Panel Study (UKHLS), also known as *Understanding Society*, is an ongoing longitudinal, nationally representative study of the UK, designed as a two-stage stratified random sample of the

general population. The data used here consist of two pooled cross-sectional waves (waves 2 and 3), age range from 28 to 98 years (59% women) [31].

GSE174818 contains data for 101 COVID-19 cases and 27 age- and sex-matched controls hospitalised with respiratory symptoms, ranging from 21 to 90 years (40% women) [32].

The Northern Ireland Cohort for the Longitudinal Study of Ageing (NICOLA) is a longitudinal cohort representative of the non-institutionalised population of Northern Ireland age 50 years and over [34, 36]. In this study, we used all the individuals with available DNAm data at baseline and follow-up information about cardiovascular events ($N=1728$; 83 CVD cases). The average (sd) time from recruitment to CVD events was 3.4 (0.4) years. The average (sd) follow-up time was 3.3 (0.3) years.

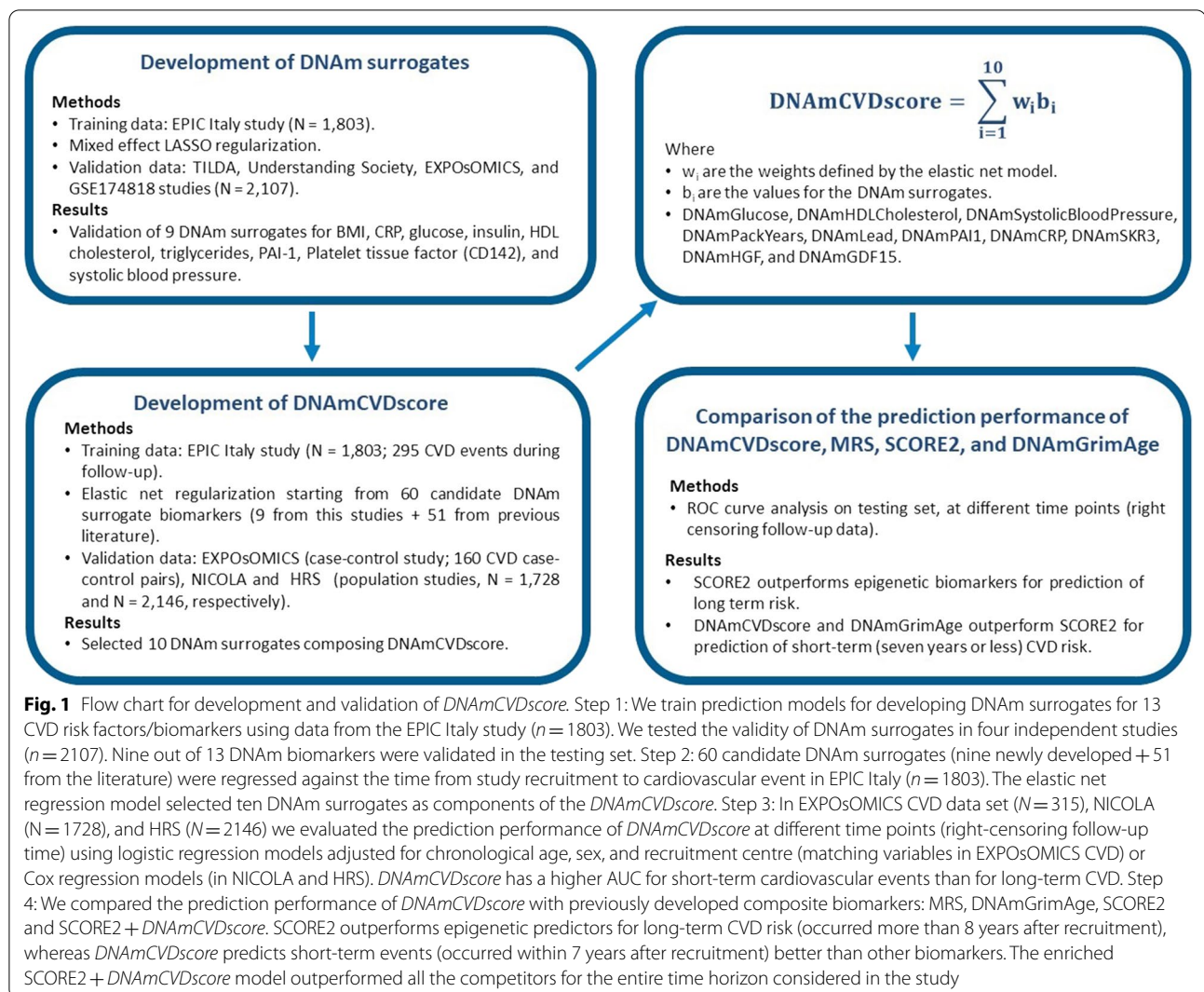
The Health and Retirement Study (HRS) is a nationally representative longitudinal survey of more than 37,000 individuals over age 50 in 23,000 households in the U.S.A. In this study, we used all the individuals with available DNAm data at baseline and follow-up information about cardiovascular events ($N=2146$; 209 CVD cases) [37]. The average (sd) time from recruitment to CVD events was 2.9 (1.1) years. The average (sd) follow-up time was 3.6 (0.8) years.

In Fig. 1, we present the analytical flow chart summarising the main steps for developing the *DNAmCVDscore*:

- (1) Develop and validate novel DNAm surrogate biomarkers (training set: EPIC Italy; testing sets: EXPOsOMICS CVD, Understanding Society, TILDA, and GSE174818) through LASSO regularisation for linear regression model.
- (2) Develop the *DNAmCVDscore* (training set: EPIC Italy; 60 candidate DNAm surrogate biomarkers)

Table 1 Study sample description

| Study name | Description | Country | N | Age means (min; max) | Female % | Training/Testing set |
|-----------------------|--|---------|------|----------------------|----------|--|
| EPIC Italy | Italian sub-sample of the European Investigation into Cancer and Nutrition study | Italy | 1803 | 53.3 (34.7; 74.9) | 62 | Training set for DNAm surrogates and <i>DNAmCVDscore</i> |
| EXPOsOMICS CVD | Case–control study on CVD nested in the EPIC Italy cohort | Italy | 315 | 54.9 (35.2; 69.3) | 53 | Validation set for DNAm surrogates and <i>DNAmCVDscore</i> |
| Understanding Society | The United Kingdom Household Panel Study (UKHLS) | UK | 1174 | 58.0 (28.0; 98.0) | 59 | Validation set for DNAm surrogates |
| TILDA | The Irish Longitudinal Study on Ageing | Ireland | 490 | 62.1 (50.0; 80.0) | 50 | Validation set for DNAm surrogates |
| GSE174818 | Case–control study on COVID-19 susceptibility and progression | USA | 127 | 61.8 (21.0; 90.0) | 40 | Validation set for DNAm surrogates |
| NICOLA | The Northern Ireland Cohort for the Longitudinal Study of Ageing | UK | 1728 | 63.99 (40.0; 96.0) | 52 | Validation set for <i>DNAmCVDscore</i> |
| HRS | The Health and Retirement Study | USA | 2146 | 68.76 (50.0; 100.0) | 60 | Validation set for <i>DNAmCVDscore</i> |



through elastic net for Cox proportional hazards model.

- (3) Validation of the *DNAmCVDscore* investigating its prediction performance through ROC curve analysis, right-censoring follow-up data at different time points in EXPOsOMICS CVD data set, and through C-index in NICOLA and HRS data sets.
- (4) Comparison of *DNAmCVDscore*, MRS, SCORE2, and DNAmGrimAge predictive value.

Estimation and validation of DNAm surrogates

By means of penalised linear regression models (see “Methods” section), we developed DNAm surrogates for body mass index (BMI), systolic and diastolic blood pressure, and ten blood measured biomarkers: total cholesterol, HDL cholesterol, LDL cholesterol, triglycerides, plasminogen activator inhibitor-1 (PAI-1), C-reactive

protein (CRP), D-dimer, platelet tissue factor (a.k.a. CD142 protein), fasting glucose, and insulin.

A 75% proportion of the EPIC Italy data set ($N = 1352$) was employed as training set, the remaining 25% as a primary testing set, while the other four studies (EXPOsOMICS CVD, Understanding Society, TILDA, and GSE174818) were considered for validation. In Table 2, we report the number of CpGs whose linear combination best predicted the corresponding marker and the Pearson correlation coefficients of observed (measured) vs predicted (DNAm surrogate) in the EPIC Italy testing set (25% of the total sample). The correlation of DNAm surrogates with the corresponding measured marker was always higher than 0.4 (all P values lower than 0.0001), ranging from 0.43 (DNAmPAI-1 vs PAI-1) to 0.73 (DNAmTriglycerides vs triglycerides). Further, in Table 2, we report the Pearson correlation coefficients of observed vs predicted values computed in the four

Table 2 List of newly developed DNAm surrogate biomarkers

| Model training, EPIC Italy training set, $n = 1352$ | | | Results on EPIC ITALY test set $n = 451$ | | Results on the validation set | | | Validated DNAm surrogate |
|---|--------------------|----------------|--|---------|--|-----------|---------|--------------------------|
| Risk factor/biomarker | Model type | Number of CpGs | Pearson R | P | Validation data sets (N) | Pearson R | P | |
| BMI | Mixed-effect LASSO | 405 | 0.59 | <0.0001 | US, TILDA, EXPOsOMICS, GSE174848 (2,045) | 0.27 | <0.0001 | Yes |
| CRP | LASSO | 265 | 0.57 | <0.0001 | US, TILDA, EXPOsOMICS, GSE174849 (1,893) | 0.23 | <0.0001 | Yes |
| D-dimer | LASSO | 483 | 0.72 | <0.0001 | EXPOsOMICS, GSE174848 (248) | 0.17 | 0.56 | No |
| Diastolic blood pressure | Mixed-effect LASSO | 401 | 0.57 | <0.0001 | EXPOsOMICS, TILDA (772) | 0.10 | 0.36 | No |
| Glucose | Mixed-effect LASSO | 354 | 0.67 | <0.0001 | EXPOsOMICS, TILDA, US (1,810) | 0.28 | 0.007 | Yes |
| HDL cholesterol | Mixed-effect LASSO | 151 | 0.58 | <0.0001 | EXPOsOMICS, TILDA, US (1,829) | 0.08 | 0.001 | Yes |
| Insulin | Mixed-effect LASSO | 574 | 0.66 | <0.0001 | EXPOsOMICS (170) | 0.44 | <0.0001 | Yes |
| LDL cholesterol | Mixed-effect LASSO | 368 | 0.62 | <0.0001 | EXPOsOMICS, TILDA (661) | 0.15 | 0.36 | No |
| PAI-1 | LASSO | 90 | 0.43 | <0.0001 | EXPOsOMICS (171) | 0.28 | 0.0001 | Yes |
| Systolic blood pressure | Mixed-effect LASSO | 275 | 0.64 | <0.0001 | EXPOsOMICS, TILDA (772) | 0.28 | 0.001 | Yes |
| Tissue factor (CD142) | Mixed-effect LASSO | 197 | 0.62 | <0.0001 | EXPOsOMICS (171) | 0.16 | 0.03 | Yes |
| Total cholesterol | Mixed-effect LASSO | 257 | 0.53 | <0.0001 | EXPOsOMICS, TILDA, US (1,830) | 0.13 | 0.14 | No |
| Triglycerides | LASSO | 471 | 0.73 | <0.0001 | EXPOsOMICS, TILDA (661) | 0.22 | 0.0003 | Yes |

For each candidate marker, we reported: the model used to extract significant CpGs (LASSO or mixed-effect LASSO depending on the association with the centre of recruitment), the number of CpGs whose linear combination constitute the best marker prediction, the Pearson correlation coefficient and p value in the primary test set (random 25% of EPIC Italy samples), the Pearson correlation coefficient and p value in independent test sets (random effect meta-analysis across studies). Nine out of 13 DNAm surrogates for CVD risk factors/markers were validated in independent testing set (P value for the Pearson correlation test lower than 0.05). The lists of CpGs and their weights to compute DNAm surrogates in independent data sets are provided in Additional file 1

validation data sets. The correlation of DNAm surrogates with the corresponding measured marker was always positive, ranging from 0.08 (DNAmHDL vs HDL cholesterol) to 0.44 (DNAmInsulin vs insulin). The P value was lower than 0.05 for all but D-dimer, diastolic blood pressure, LDL cholesterol, and total cholesterol. Based on the above, we validated nine (out of 13) DNAm surrogates for BMI, CRP, fasting glucose and insulin, HDL cholesterol, triglycerides, PAI-1, platelet tissue factor (CD142), and systolic blood pressure. In Additional file 1: Figure S1, we reported the scatterplots of the standardised observed vs predicted values for the nine DNAm surrogates validated in this study.

Comparison with previously developed DNAm surrogates

We compared our newly developed DNAm surrogates with previously developed DNAm surrogates for HDL cholesterol, BMI [23], and PAI-1 [11]. The Pearson correlation coefficients of our DNAm surrogates with

those previously developed were 0.31 ($P < 0.0001$), 0.45 ($P < 0.0001$), and 0.36 ($P < 0.0001$) for HDL cholesterol, BMI, and PAI-1, respectively.

Development and validation of the DNAmCVDscore

We developed a combined score, *DNAmCVDscore*, predictive of future CVD events by regressing the time-to-CVD event on 60 candidate DNAm surrogates: the nine newly developed within this study, 32 DNAm surrogates for blood measured (mainly inflammatory) proteins produced by Gadd and colleagues [23, 26]; three epigenetic clocks (HorvathDNAmAge, HannumDNAmAge, and DNAmPhenoAge) [20]; two DNAm surrogates for lead exposure [22]; six 'Houseman' DNAm surrogates for white blood cell (WBC) proportion [38]; and the nine components of the DNAmGrimAge clock (DNAm surrogates for smoking pack-years, telomere length, and seven blood measured proteins) [11].

The elastic net Cox regression model employed for the purpose selected chronological age, sex, and DNAm surrogates for blood measured glucose, HDL cholesterol,

systolic blood pressure, PAI-1, CRP (developed within this study), Serine/threonine-protein kinase receptor 3 (SKR3) and hepatocyte growth factor (HGF) (developed in Gadd et al. [25]), growth differentiation factor 15 (GDF15) protein, smoking pack-years (developed in Lu et al. [11]), and lead level measured in patella bone (developed in Colicino et al. [22]). Since age and sex effects are considered in several DNAm surrogate biomarkers that were used to derive the *DNAmCVDscore* (Glucose, PAI-1, SBP, CRP, HDL, GDF15, and PACKYRS) we re-trained the elastic net model without age and sex to derive better calibrated coefficients (not influenced by the redundant presence of age and sex). All the biomarkers except DNAmHDL have positive regression coefficients (higher risk associated with higher values). The linear combination of standardised values for the ten DNAm surrogates listed in Table 3 can be interpreted as a standardised (within the population in which it is computed) CVD risk score (named *DNAmCVDscore*). In Additional file 1: Figure S2, we report the pairwise Pearson's correlation coefficients for the 10 DNAm surrogates used to derive the *DNAmCVDscore*.

For validating the *DNAmCVDscore*, we used two different analytical approaches, depending on the study design of the validation data sets. The EXPOSOMICS CVD study had a nested case–control study design, with cases matched to healthy controls for chronological age, sex, recruitment centre, and technical covariates (controls selected using the incidence sampling method). Therefore, we test the *DNAmCVDscore* prediction performance using logistic regression models adjusted for matching variables. By contrast, NICOLA and HRS data sets include data from the general population over the age of 50 from Northern Ireland and the U.S.A.,

respectively (cohort study design), so we used Cox proportional hazard regression models.

Also, in the independent test sets we compared *DNAmCVDscore* predictive performance with those of MRS, SCORE2, and DNAmGrimAge. In EXPOSOMICS CVD, we performed ROC curve analyses of logistic regression models adjusted for matching variables, right-censoring the follow-up at constant intervals of one year from 18 to 2 years to evaluate the prediction performance as a function of the follow-up time. In NICOLA and HRS, because of the different study design (cohort studies) and the lower follow-up time (up to 5 years, 3 years on average), we computed the Harrell's concordance index (C-index) from Cox proportional hazard regression models. Further, we have evaluated the prediction performance of a model including the *DNAmCVDscore* in addition to the traditional risk factors in SCORE2 (named from here on SCORE2 + *DNAmCVDscore* model).

Validation of *DNAmCVDscore* in EXPOSOMICS CVD

In Table 4 and Fig. 2, we present the area under the ROC curve (AUC), sensitivity, and specificity (best threshold selected according to the minimum distance from the top left corner of the ROC curve) of the five composite biomarkers as a function of the length of follow-up (right censored at regular intervals of one year) in EXPOSOMICS CVD data set. For all models regressed only on epigenetic-based biomarkers, namely *DNAmCVDscore*, MRS, and DNAmGrimAge, the AUC increases as the follow-up time decreases, suggesting that epigenetic biomarkers predict short-term events rather than long-term CVD risk (Table 4 and Fig. 2). By contrast, the AUC for SCORE2 was not time-dependent, ranging from 0.678 (7 years follow-up) to 0.785 (4 years follow-up). The MRS had the worst performance independently of the

Table 3 DNAm surrogates composing the *DNAmCVD* score

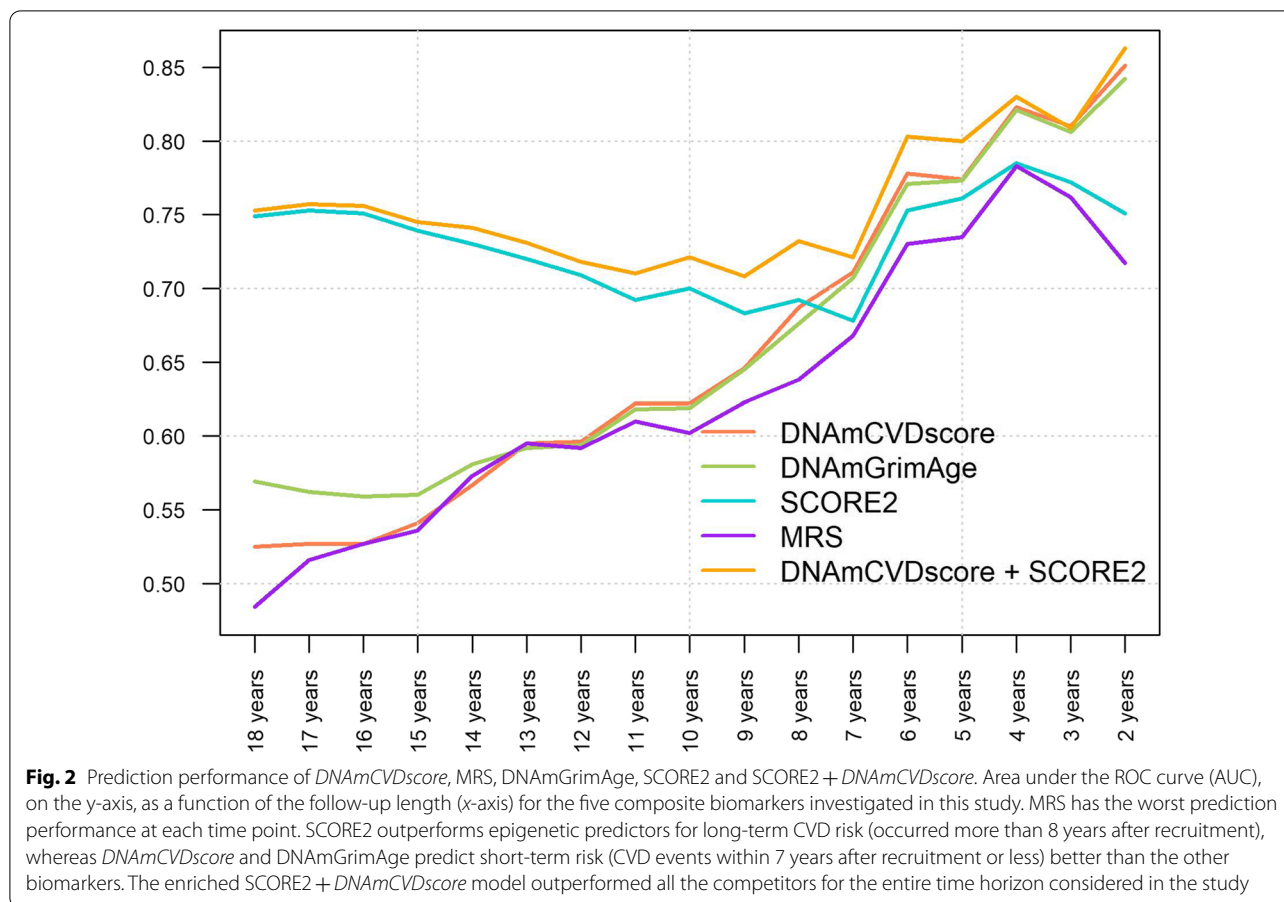
| Study | DNAm surrogate biomarker | <i>DNAmCVDscore</i> coefficient | Original biomarker/risk factor |
|----------------------|--------------------------|---------------------------------|---|
| This study | DNAmGlucose | 0.0329 | Blood glucose |
| This study | DNAmHDL | −0.4473 | Blood HDL cholesterol |
| This study | DNAmSBP | 0.1420 | Systolic blood pressure |
| This study | DNAmCRP | 0.0276 | Blood C-reactive protein |
| This study | DNAmPAI1 | 0.1679 | Blood Plasminogen activator inhibitor 1 |
| Gadd et al. 2022 | DNAmSKR3 | 0.0362 | Blood Serine/threonine-protein kinase receptor R3 |
| Gadd et al. 2022 | DNAmHGF | 0.0371 | Blood Hepatocyte growth factor |
| Colicino et al. 2021 | DNAmLeadPatella | 0.0402 | Lead levels in Patella's bone |
| Lu et al. 2019 | DNAmGDF15 | 0.0947 | Blood Growth Differentiation Factor 15 |
| Lu et al. 2019 | DNAmPACKYRS | 0.1192 | Smoking pack-years |

DNAmCVDscore is computed as a linear combination of standardised (mean = 0, variance = 1) DNAm surrogates with weights listed in the coefficient column. All biomarkers but DNAmHDL have positive coefficients (higher CVD risk associated with a higher value for the biomarker)

Table 4 Results from the ROC curve analyses in EXPOsOMICS CVD

| Follow-up time | # Events | DNAmCVDscore | | DNAmGrimAge | | SCORE2 | | MRS | | SCORE2 + DNAmCVDscore | |
|----------------|----------|----------------------|--------------------------|----------------------|--------------------------|----------------------|--------------------------|----------------------|--------------------------|-----------------------|--------------------------|
| | | AUC (95% CI) | Sensitivity; specificity | AUC (95% CI) | Sensitivity; specificity | AUC (95% CI) | Sensitivity; specificity | AUC (95% CI) | Sensitivity; specificity | AUC (95% CI) | Sensitivity; specificity |
| 18 years | 160 | 0.525 (0.461; 0.589) | 0.477; 0.580 | 0.569 (0.505; 0.632) | 0.647; 0.482 | 0.749 (0.696; 0.803) | 0.719; 0.698 | 0.484 (0.420; 0.548) | 0.523; 0.500 | 0.753 (0.700; 0.807) | 0.732; 0.685 |
| 17 years | 159 | 0.527 (0.463; 0.591) | 0.520; 0.553 | 0.562 (0.498; 0.626) | 0.669; 0.472 | 0.753 (0.700; 0.806) | 0.753; 0.671 | 0.516 (0.452; 0.580) | 0.545; 0.484 | 0.757 (0.704; 0.810) | 0.740; 0.689 |
| 16 years | 158 | 0.527 (0.463; 0.591) | 0.513; 0.554 | 0.559 (0.496; 0.623) | 0.583; 0.572 | 0.751 (0.698; 0.805) | 0.718; 0.692 | 0.527 (0.463; 0.591) | 0.449; 0.610 | 0.756 (0.704; 0.809) | 0.705; 0.717 |
| 15 years | 149 | 0.541 (0.477; 0.604) | 0.518; 0.577 | 0.560 (0.496; 0.623) | 0.681; 0.450 | 0.739 (0.684; 0.794) | 0.741; 0.671 | 0.536 (0.472; 0.600) | 0.509; 0.477 | 0.745 (0.691; 0.799) | 0.687; 0.732 |
| 14 years | 139 | 0.567 (0.504; 0.630) | 0.483; 0.662 | 0.581 (0.518; 0.644) | 0.494; 0.662 | 0.730 (0.674; 0.786) | 0.705; 0.691 | 0.573 (0.509; 0.636) | 0.682; 0.475 | 0.741 (0.686; 0.796) | 0.688; 0.683 |
| 13 years | 123 | 0.595 (0.531; 0.659) | 0.625; 0.537 | 0.592 (0.528; 0.656) | 0.526; 0.667 | 0.720 (0.663; 0.777) | 0.662; 0.699 | 0.595 (0.531; 0.659) | 0.531; 0.650 | 0.731 (0.676; 0.787) | 0.651; 0.740 |
| 12 years | 111 | 0.596 (0.530; 0.662) | 0.529; 0.649 | 0.594 (0.529; 0.659) | 0.510; 0.694 | 0.709 (0.650; 0.768) | 0.588; 0.775 | 0.592 (0.525; 0.658) | 0.588; 0.613 | 0.718 (0.661; 0.775) | 0.598; 0.757 |
| 11 years | 95 | 0.622 (0.554; 0.690) | 0.536; 0.705 | 0.618 (0.549; 0.686) | 0.568; 0.663 | 0.693 (0.630; 0.755) | 0.582; 0.758 | 0.610 (0.540; 0.680) | 0.536; 0.695 | 0.710 (0.651; 0.770) | 0.600; 0.737 |
| 10 years | 84 | 0.622 (0.551; 0.693) | 0.580; 0.607 | 0.619 (0.548; 0.691) | 0.576; 0.631 | 0.700 (0.636; 0.765) | 0.550; 0.845 | 0.602 (0.530; 0.673) | 0.541; 0.667 | 0.721 (0.661; 0.781) | 0.554; 0.821 |
| 9 years | 67 | 0.647 (0.571; 0.722) | 0.601; 0.612 | 0.645 (0.569; 0.721) | 0.649; 0.582 | 0.683 (0.611; 0.754) | 0.609; 0.746 | 0.623 (0.546; 0.700) | 0.581; 0.627 | 0.708 (0.642; 0.775) | 0.577; 0.731 |
| 8 years | 55 | 0.687 (0.611; 0.762) | 0.569; 0.709 | 0.676 (0.601; 0.752) | 0.627; 0.673 | 0.692 (0.618; 0.766) | 0.623; 0.746 | 0.638 (0.554; 0.722) | 0.635; 0.618 | 0.732 (0.664; 0.800) | 0.612; 0.782 |
| 7 years | 37 | 0.711 (0.626; 0.796) | 0.615; 0.703 | 0.707 (0.625; 0.789) | 0.554; 0.811 | 0.678 (0.587; 0.770) | 0.622; 0.703 | 0.668 (0.566; 0.770) | 0.669; 0.622 | 0.721 (0.641; 0.801) | 0.741; 0.649 |
| 6 years | 28 | 0.778 (0.702; 0.854) | 0.673; 0.786 | 0.771 (0.688; 0.853) | 0.634; 0.821 | 0.753 (0.668; 0.839) | 0.686; 0.786 | 0.730 (0.616; 0.844) | 0.669; 0.750 | 0.803 (0.740; 0.867) | 0.676; 0.893 |
| 5 years | 23 | 0.774 (0.695; 0.853) | 0.623; 0.826 | 0.773 (0.694; 0.851) | 0.634; 0.826 | 0.761 (0.665; 0.856) | 0.723; 0.783 | 0.735 (0.618; 0.852) | 0.688; 0.783 | 0.800 (0.741; 0.860) | 0.757; 0.783 |
| 4 years | 16 | 0.823 (0.746; 0.899) | 0.799; 0.688 | 0.821 (0.736; 0.906) | 0.632; 0.938 | 0.785 (0.653; 0.917) | 0.722; 0.875 | 0.783 (0.649; 0.917) | 0.689; 0.875 | 0.830 (0.755; 0.906) | 0.773; 0.750 |
| 3 years | 13 | 0.811 (0.720; 0.901) | 0.642; 0.846 | 0.806 (0.724; 0.888) | 0.652; 0.846 | 0.772 (0.620; 0.923) | 0.772; 0.846 | 0.762 (0.628; 0.896) | 0.768; 0.769 | 0.809 (0.726; 0.892) | 0.705; 0.846 |
| 2 years | 7 | 0.851 (0.767; 0.935) | 0.799; 0.857 | 0.842 (0.745; 0.939) | 0.737; 0.857 | 0.751 (0.575; 0.926) | 0.656; 0.857 | 0.717 (0.562; 0.872) | 0.779; 0.571 | 0.863 (0.766; 0.960) | 0.766; 0.857 |

For each composite biomarker, we report the AUC (95% CI), sensitivity, and specificity according to the best threshold (minimising the distance from the top left corner of the ROC curve) derived from logistic regression model adjusted for matching parameters (age, sex, and centre of recruitment). Predictive performance was evaluated at different time points, right-censoring the follow-up time in the range of 18 to two years, with one year interval



follow-up length (Table 4 and Fig. 2). SCORE2 outperformed epigenetic biomarkers in predicting CVD events considering follow-up time from 18 to 8 years. However, right-censoring the follow-up time at 7 years or less, *DNAmCVDscore* and *DNAmGrimAge* perform better than SCORE2, with *DNAmCVDscore* having a slightly higher AUC than *DNAmGrimAge* (Table 4 and Fig. 2). Overall, the best performance throughout the considered time horizon is showcased by the SCORE2 + *DNAmCVDscore* model, in which the original SCORE2 model is enriched with the *DNAmCVDscore* developed in this study. Epigenetic-based biomarkers improve the predictive accuracy of SCORE2, complementing the information provided by traditional CVD risk factors. This is particularly true when a short follow-up time is considered, where the differences between SCORE2 and SCORE2 + *DNAmCVDscore* are evident.

Validation of *DNAmCVDscore* in NICOLA and HRS

In Cox regression models adjusted for age and sex, the hazard ratio (HR) for one standard deviation increase in the *DNAmCVDscore* was 2.05 (95% CI 1.13; 3.73, $P=0.02$) and 1.70 (95% CI 1.12; 2.58, $P=0.01$) in

Table 5 Results from the Cox (proportional hazard) regression models in NICOLA and HRS validation data sets

| | NICOLA (N= 1728; 83 CVD cases) | HRS (N= 2146; 209 CVD cases) |
|------------------------------|-----------------------------------|---------------------------------|
| | C-index (95% CI) | C-index (95% CI) |
| <i>DNAmCVDscore</i> | 0.73 (0.68; 0.78) | 0.70 (0.65; 0.73) |
| <i>DNAmGrimAge</i> | 0.72 (0.67; 0.77) | 0.70 (0.65; 0.74) |
| SCORE2 | 0.72 (0.67; 0.77) | 0.69 (0.65; 0.74) |
| MRS | 0.69 (0.64; 0.75) | 0.68 (0.63; 0.72) |
| <i>DNAmCVDscore</i> + SCORE2 | 0.75 (0.69; 0.80) | 0.71 (0.67; 0.75) |

For each composite biomarker, we report the C-index (95% CI) derived from Cox regression models adjusted for age and sex

NICOLA and HRS data sets, respectively. In Table 5, we reported the C-index and their 95% confidence intervals for the five composite biomarkers (*DNAmCVDscore*, *DNAmGrimAge*, MRS, SCORE2, and SCORE2 + *DNAmCVDscore*). In line with EXPOSOMICS CVD, *DNAmCVDscore* performed slightly better than *DNAmGrimAge* and SCORE2, whereas MRS had the poorest predictive performance. Finally, the

combined model including SCORE2 variables + *DNAmCVDscore* had a slightly higher C-index than the model with *DNAmCVDscore* alone.

We performed additional statistical comparisons, including sensitivity analyses, correlation of *DNAmCVDscore* with epigenetic clocks, and the association of *DNAmCVDscore* with COVID-19 case–control status and severity. The results of these additional analyses are reported in Additional file 1.

Discussion

Emerging evidence highlights the epidemiological value of composite scores based on blood DNAm surrogates of exposures and risk factors, e.g. epigenetic clocks, associated with non-communicable diseases (NCDs) and predictive of mortality [20]. However, since ‘next-generation’ epigenetic clocks have been trained on time to death, they constitute non-specific biomarkers, representative of the general individual state of health, rather than disease-specific biomarkers.

In this work, we present a combined blood DNAm-based biomarker for predicting future cardiovascular events, named *DNAmCVDscore*. To the best of our knowledge, this is the first example of a disease-specific biomarker using molecular data only, without the need for additional information (other than age and sex) about the personal history of exposure, general state of health, lifestyle habits, and other commonly used biomarkers. This may be important for future risk prediction reducing the scope of measurement error and bias attendant on self-reports of exposure to risk factors. For this aim, DNAm-based biomarkers are optimal candidates because DNAm is strongly influenced by long-term exposures, genetic susceptibility, and lifestyle habits [39]. In other words, it is possible to extract information about the history of exposures and susceptibility to complex diseases from whole-genome DNAm data with high accuracy.

We applied a two-step approach, following the successful example of the epigenetic clocks. First, we developed and validated nine novel DNAm surrogates for CVD risk factors: systolic blood pressure, BMI, CRP, fasting glucose and insulin, HDL cholesterol, triglycerides, PAI-1, and platelet tissue factor (a.k.a. CD142 protein). In Additional file 1, we provided the lists of CpG sites and their weights for generating the new DNAm surrogates in independent data sets for future epidemiological research.

Then, we developed a *DNAmCVDscore* starting from 60 candidate DNAm surrogates (nine newly developed within this study plus 51 from the previous literature), including surrogate measures for the main risk factors for CVDs (obesity, smoking habits, alcohol consumption, inflammatory proteins, lipid levels, blood pressure, coagulation biomarkers). Our elastic net model extracted ten

DNAm surrogate biomarkers whose linear combination constitutes the so-called *DNAmCVDscore*: fasting glucose, HDL cholesterol, systolic blood pressure, smoking pack-years, lead exposure and blood levels of PAI-1, CRP, SKR3, HGF, and GDF15 proteins.

We validated the ability of the *DNAmCVDscore* to predict future cardiovascular events in an independent prospective case–control study nested in the EPIC Italy cohort (EXPOsOMICS CVD) and two cohort studies from Northern Ireland and the U.S.A. (NICOLA and HRS). EXPOsOMICS CVD matched incident CVD cases with healthy controls by age, sex, recruitment centre, and length of follow-up (up to 18 years; around 12 years on average) using the incident density sampling method, while NICOLA and HRS are cohort studies from the general population over the age of 50 with a follow-up time up to 5 years (3 years on average). We showed that existing prediction models based on traditional CVD risk factors (SCORE2 [10], based on chronological age, sex, diabetes, smoking, systolic blood pressure, total and HDL cholesterol) outperform epigenetic biomarkers for predicting long-term CVD risk according to the AUC measure. However, *DNAmCVDscore* predicts short-term (7 years follow-up or less) CVD risk better than SCORE2. Other known CVD scores based on traditional risk factors like the Framingham Risk Score (FRS) [40], share the majority of predictors with SCORE2, consequently, they have prediction performance comparable to that of SCORE2 (data not shown to avoid redundancy).

When traditional risk factors are combined with epigenetic biomarkers, as done in the SCORE2 + *DNAmCVDscore* model, the best performance for both long- and short-term CVD risk is achieved. Interestingly, the prediction performance of *DNAmCVDscore* and DNAmGrimAge was comparable (slightly higher for *DNAmCVDscore* for short-term events). Accordingly, in Additional file 2: Table S2 we showed that the combination SCORE2 + DNAmGrimAge was comparable (slightly lower) to the combination SCORE2 + *DNAmCVDscore*, and that the combination SCORE2 + *DNAmCVDscore* + DNAmGrimAge does not outperform SCORE2 + *DNAmCVDscore*, further supporting that *DNAmCVDscore* and DNAmGrimAge shared a significant proportion of variability. This is not unexpected considering the *DNAmCVDscore* and DNAmGrimAge share four of the ten components (DNAmCRP, DNAmPAI1, DNAmPackYears, and DNAmGDF15), and the Pearson correlation coefficient for both epigenetic biomarkers is $R=0.56$ ($P<0.0001$, Additional file 1: Figure S4). Such similarities may be explained by the fact that CVD is the leading cause of mortality worldwide and that the DNAmGrimAge was trained to predict time to death in the Framingham Heart Study, in which there is

detailed characterisation and documentation of heart disease [11]. From a biological perspective, these results confirm previous research indicating that heightened inflammation (associated with all four components common in both scores) plays a major role in biological ageing and the risk of age-related diseases, including CVDs [41].

Finally, we showed that the MRS, built directly from modelling the association of CpGs on CVD risk using a single-step approach, had the worst prediction performance independently of the length of follow-up and study design.

Among the 10 DNAm surrogates used to derive the *DNAmCVDscore*, DNAmHDL had the largest absolute coefficient, consistent with the strong association of serum HDL with CVD risk in the training set, which explains more than 65% of the variability in *DNAmCVDscore* (Pearson correlation coefficient between DNAmHDL and *DNAmCVDscore* = -0.82, Additional file 2: Table S2). As such, we performed additional sensitivity analyses to evaluate the prediction performance of DNAmHDL alone. In the testing sets, the prediction of *DNAmCVDscore* was higher than DNAmHDL, suggesting that each of the 10 surrogate biomarkers captures a slice of the variability in the risk of future CVD events. Also, the pairwise correlation coefficients among the 10 surrogates were generally lower than 0.3 with few exceptions (high mutual correlation between DNAmPACKYRS, DNAmHGF, and DNAmSKR3, Additional file 2: Table S2), further supporting previous interpretation.

The results described above suggest that blood DNAm predictor of diseases may be improved. For example, the *DNAmCVDscore* can be ameliorated in different ways:

- (1) More DNAm surrogates, such as surrogate measures for air pollution exposure, physical activity, dietary quality (e.g. adherence to the Mediterranean diet or consumption of ultra-processed food) [30, 42–44] should be developed and included among the list of candidates in the training model.
- (2) Refined statistical methods can be used to improve DNAm biomarkers reproducibility and reducing noise due to unmeasured batch effect [45, 46] and to evaluate their predictive performance for multiple outcomes [47]. Given the likely life course effects on methylation trajectories, alternative functional forms other than linear combinations should also be explored possibly using longitudinal data.
- (3) Acknowledging the drawbacks of shrinkage methods like the elastic net [48], we should look towards increasing the sample size of the training set by combining data from multiple cohorts and different

countries, possibly modelling country-specific risk factors to improve results generalisability.

- (4) A more comprehensive evaluation of their real-world value, incorporating calibration, clinical utility, and net benefit [49].

Also, we showed that, although *DNAmCVDscore* is not directly trained on age, it is correlated with chronological age ($R=0.41$, $P<0.0001$) and epigenetic clocks (Additional file 1: Figure S2). These results further support the idea that susceptibility due to increasing ageing is included in the *DNAmCVDscore*, even if chronological age (or epigenetic clocks) does not directly contribute to it.

Further, we demonstrated the usefulness of DNAm surrogate biomarkers in investigating COVID-19 susceptibility and severity, showing that *DNAmBMI* was associated with case-control status, while measured BMI was not (Additional file 1; Additional file 2: Table S2), and that *DNAmCRP* outperformed blood measured CRP in predicting disease severity (Additional file 1; Additional file 2: Table S2). Finally, we showed that *DNAmCVDscore* is higher in COVID-19 patients than in controls (hospitalised with respiratory problems) and that a higher *DNAmCVDscore* is associated with a worse prognosis (according to the GRAM score) after COVID-19 infection (Additional file 1: Figure S4). These results support recent literature suggesting COVID-19 shares direct and indirect determinants (i.e. ethnicity, socio-economic status) with other NCDs, supporting the concept of COVID-19 as a syndemic [50, 51] with implications for restrictions and prevention strategies.

This work has limitations. The training set for the time from recruitment to the cardiovascular events comes from the Italian population, and the predictive performance for long-term CVD was poor. This result is partially explained by our selection procedure in the training set, based on the time-to-CVD event. Also, it may support a previous report about DNAm as biomarkers of life course accumulation of exposure and stressors [52], leading to a better prediction of short-term outcomes rather than long-term risk. Thus, methylation levels are likely to have undergone severe changes as the follow-up time increased. Moreover, in the current study, incident CVD events many years after recruitment were mostly limited to individuals with baseline diabetes, an aspect taken into account by traditional scores based on risk factors but not included in our DNAm-based score.

We discussed previously how *DNAmCVDscore* could be refined by re-training the model after increasing the sample size and using updated analytical methods.

Conclusions

We developed a combined biomarker as a linear combination of DNAm surrogates, named *DNAmCVDscore*, with high performance in predicting short-term cardiovascular events outperforming current state-of-the-art CVD prediction models based on traditional risk factors, and DNAm scores based on a single-step approach. Further, we provided new DNAm surrogates for CVD risk factors useful for further research in molecular epidemiology.

This work provides a proof of concept about the effectiveness of the described methodology based on a two-step approach which involve DNAm surrogates. Developing blood-based biomarker for risk prediction without the need for additional information or invasive measurements would provide significant opportunities to reduce disease burden from a public health perspective.

Our results encourage further studies investigating the association of the newly developed *DNAmCVDscore* with secondary outcomes that result from CVD (such as lung function, reduced cognitive and mobility outcomes), and to test this two-step approach for other NCD diseases (such as cancer, mental diseases, neurodegenerative diseases, respiratory problems, and hearing and taste loss) by training and developing DNAm surrogates for disease-specific risk factors and exposures.

Methods

Subject recruitment, demographic/lifestyle variables acquisition, and DNA methylation measurements

EPIC Italy

Study participants were drawn from the Italian component of the European Prospective Investigation into Cancer and Nutrition (EPIC) cohort [53], a large general population cohort consisting of ~520,000 individuals, with standardised lifestyle and personal history questionnaires, measured anthropometric data and blood samples collected for DNA extraction. Smoking habits data were collected at study enrolment using a questionnaire, and participants were categorised as ‘never’, ‘former’ and ‘current’ smokers. Height and weight were measured at enrolment with a standardised protocol, and body mass index (BMI) was calculated as the ratio between weight in kg and squared height in metres, treated as a continuous variable. Measurements methods for blood pressure, cholesterol levels, triglycerides, and PAI1, D-dimer, and CRP are reported elsewhere [54].

This study sample includes individuals from five nested case-control studies on breast, colon, and lung cancer, lymphomas, and myocardial infarction [55, 56]. Participants were sampled from the 47,749 participants of the EPIC Italy cohort and included 354 incident breast cancer cases, 169 incident colon cancer cases, 192 incident

lung cancer cases, 72 incident lymphoma cases, 295 incident myocardial infarction cases and their 1079 matched controls. Controls were individually matched on age (± 5 years), sex, the season of blood collection, centre, and length of follow-up. Since the disease diagnoses were made years after the blood draw, all the subjects were treated as healthy at recruitment. In the time-to-CVD event analyses, the follow-up time was (right) censored at the time of diagnosis for incident cancer cases. Overall, after DNA methylation data quality controls and sample filtering 1,803 EPIC Italian subjects were used in this analysis.

EXPOsOMICS CVD

Study participants pertain to the EPIC Italy cohort. 160 incident CVD cases and one-to-one matched controls (not overlapping with the EPIC Italy data set described hereafter) were extracted using the incident density sampling method [30]. After DNAm data quality control and sample filtering, 315 individuals were included in this study.

For the microarray (in EPIC Italy and EXPOsOMICS CVD), DNA samples were extracted from buffy coats using the QIA Symphony DNA Midi Kit (Qiagen, Crawley, UK). Bisulphite conversion of 500 ng of each sample was performed using the EZ-96 DNA Methylation-Gold™ Kit according to the manufacturer’s protocol (Zymo Research, Orange, CA). Then, bisulphite-converted DNA was used for hybridisation on the Infinium HumanMethylation450 BeadChip, following the Illumina Infinium HD Methylation protocol. Briefly, a whole-genome amplification step was followed by enzymatic end-point fragmentation and hybridisation to HumanMethylation 450 BeadChips at 48 °C for 17 h, followed by single nucleotide extension. The incorporated nucleotides were labelled with biotin (ddCTP and ddGTP) and 2,4-dinitrophenol (DNP) (ddATP and ddTTP). After the extension step and staining, the BeadChip was washed and scanned using the Illumina HiScan SQ scanner. The intensities of the images were extracted using the GenomeStudio (v.2011.1) Methylation module (1.9.0) software, which normalises within-sample data using different internal controls that are present on the HumanMethylation 450 BeadChip and internal background probes. The methylation score for each CpG was represented as a β value according to the fluorescent intensity ratio representing any value between 0 (unmethylated) and 1 (completely methylated).

The Irish longitudinal study on ageing (TILDA)

Is a large prospective cohort study examining the social, economic and health circumstances of 8,175 community-dwelling older adults aged 50 years and over resident in

the Republic of Ireland. The sample was generated using a 3-stage selection process and the Irish Geodirectory as the sampling frame. The Irish Geodirectory is a comprehensive listing of all addresses in the Republic of Ireland, which is compiled by the national post service and ordinance survey Ireland. Subdivisions of district electoral divisions pre-stratified by socio-economic status, age, and geographical location, served as the primary sampling units. The second stage involved the selection of a random sample of 40 addresses from within each PSU resulting in an initial sample of 25,600 addresses. The third stage involved the recruitment of all members of the household aged 50 years and over. Consequently, the response rate was defined as the proportion of households including an eligible participant from whom an interview was successfully obtained. A response rate of 62% was achieved at the household level. There were three components to the survey. Respondents completed a computer-assisted personal interview and a separate self-completion paper and pencil module which collected information that was considered sensitive. All participants were invited to undergo an independent health assessment at one of two national centres using trained nursing staff. Blood samples were taken during the clinical assessment with the consent of participants. A more detailed exposition of study design, sample selection and protocol are available elsewhere [19]. The present study sample included 500 healthy individuals: 125 for each of the four socio-economic classes: stable professional, any downward mobility, any upward mobility, and stable unskilled. Buffy coat or peripheral blood mononuclear cells (PBMC) samples were available for all the individuals. Overall, after DNA methylation data quality controls and sample filtering, 490 subjects were analysed in this study.

For the microarray, DNA samples were extracted from buffy coats using the QIAGEN GENTRA AUTOPURE LS (Qiagen, Crawley, UK). Bisulphite conversion of 500 ng of each sample was performed using the EZ DNA Methylation-Lightning™ Kit according to the manufacturer's protocol (Zymo Research, Orange, CA). Then, bisulphite-converted DNA was used for hybridisation on the Infinium HumanMethylation 850 k BeadChip, following the Illumina Infinium HD Methylation protocol. Briefly, a whole-genome amplification step was followed by enzymatic end-point fragmentation and hybridisation to HumanMethylation EPIC Chip at 48 °C for 17 h, followed by single nucleotide extension. The incorporated nucleotides were labelled with biotin (ddCTP and ddGTP) and 2,4-dinitrophenol (DNP) (ddATP and ddTTP). After the extension step and staining, the BeadChip was washed and scanned using the Illumina HiScan SQ scanner. The intensities of the images were extracted

using the GenomeStudio (v.2011.1) Methylation module (1.9.0) software, which normalises within-sample data using different internal controls that are present on the HumanMethylation 850 k BeadChip and internal background probes. The methylation score for each CpG was represented as a β value according to the fluorescent intensity ratio representing any value between 0 (unmethylated) and 1 (completely methylated).

Understanding society

The study sample consisted of participants from the United Kingdom Household Panel Study (UKHLS), also known as Understanding Society [57], an ongoing longitudinal, nationally representative study of the UK, designed as a two-stage stratified random sample of the general population. While Understanding Society is a panel survey, the data used here consist of two pooled cross-sectional waves where a nurse collected blood samples from the respondents, among other physiological measures. The eligibility criteria for collecting blood samples were: (a) participation in the previous main interviews in England (had participated in all annual interviews between 1999 (BHPS wave 9) and 2011–2013 (Understanding Society wave 2 and 3); (b) age 16 and over; (c) living in England, Wales, or Scotland. From the potential pool of 6337 survey respondents, eligibility requirements for epigenetic analyses meant that the samples for DNA methylation measurement were restricted to participants of white ethnicity, resulting in 1175 subjects; more details can be found elsewhere [31]. Details about laboratory analyses for DNAm and how to access raw data can be found at the Understanding Society web site.

(<https://www.understandingsociety.ac.uk/documentation/mainstage/dataset-documentation/variable/epigenetics>).

For the GSE174818 (Covid-19 case–control) study, details of sample characteristics and laboratory methods for DNAm and biomarker analyses are described in the original publication [32].

The Health and Retirement Study (HRS) is a nationally representative longitudinal survey of more than 37,000 individuals U.S.A. [35]. The survey has been fielded every 2 years since 1992 and was established to provide a national resource for data on the changing health and economic circumstances associated with ageing at both individual and population levels. The cohort study is focussed on four broad topics: income and wealth; health, cognition, and use of healthcare services; work and retirement; and family connections. HRS data are also linked at the individual level to administrative records from Social Security and Medicare, Veteran's Administration, the National Death Index, and employer-provided

pension plan information. Since 2006, data collection has expanded to include genetic and epigenetic biomarkers. DNA methylation assays were done on a non-random sub-sample ($N=4018$) of people who participated in the Health and Retirement 2016 Venous Blood Study. In this study, we used the sub-sample in which health assessment at the follow-up was available ($N=2146$). The sample is 60% female and has a median age of 67 years and ranges in age from 50 to 100. It has racial diversity: non-Hispanic White and others (81.1%), non-Hispanic Black (10.0%), and Hispanic (8.9%). The sample is weighted to be representative of the U.S. population. DNA methylation data are based on assays using the Infinium Methylation EPIC BeadChip completed at the Advanced Research and Diagnostics Laboratory at the University of Minnesota. Samples were randomised across plates by key demographic variables (age, cohort, sex, education, race/ethnicity) with 39 pairs of blinded duplicates. Analysis of duplicate samples showed a correlation >0.97 for all CpG sites. The minfi package in R software was used for data pre-processing, and quality control; 3.4% of the methylation probes ($n=29,431$ out of 866,091) were removed from the final data set due to suboptimal performance (using a detection p value threshold of 0.01). Analysis for detection p value failed samples was done after removal of detection p value failed probes. Using a 5% cut-off we removed 58 samples. We also removed sex-mismatched samples and any controls (cell lines, blinded duplicates).

The Northern Ireland Cohort for the Longitudinal Study of Ageing (NICOLA) is a longitudinal cohort representative of the non-institutionalised population of Northern Ireland aged 50 years and older ($N=8504$) [34]. The study, which was established in 2013, has three main components: a computer aided personal interview (CAPI), a self-completion questionnaire and health assessment. Dietary intake was also assessed by a food frequency questionnaire. The CAPI was extensive in scope and included assessment of demographic, social and health-related factors. Measures of cardiovascular, physical, cognitive, and visual function were determined, and a biobank of biological samples collected. DNA samples were extracted from buffy coats by Eurofins Scientific and normalised using PicoGreen quantitation. Bisulphite conversion of 500 ng of each sample was performed using the EX Zymo Methylation Kit (Zymo Research, Orange, CA) using the alternative overnight incubation conditions provided in the published protocol for use with the Illumina Infinium MethylationEPIC kit (Illumina USA). Then, bisulphite-converted DNA was used for hybridisation on the Infinium MethylationEPIC BeadChip array (Illumina, USA) following the manufacturer's instructions, with arrays run on an Illumina

HiScan. The intensities of the images were background adjusted and extracted as beta values using the Genomestudio (v.2011.1) Methylation module (1.9.0) software.

DNA methylation data pre-processing and quality controls

For all the studies but HRS (pre-processing procedure described previously), raw DNAm data were pre-processed and normalised using in-house software written for the R statistical computing environment, including background and colour bias correction, quantile normalisation, and BMIQ procedure to remove type I/type II probes bias, as described elsewhere [58]. DNAm levels were expressed as the ratio of the intensities of methylated cytosines over the total intensities (β values). Samples were excluded if the bisulphite conversion control fluorescence intensity was less than 10,000 for both type I and type II probes. Methylation measures were set to missing if the detection P value was greater than 0.01. Additionally, the set of cross-reactive and/or polymorphic (with minor allele frequency greater than 0.01 in Europeans) CpGs ($N=39,238$) described by Chen et al. [59] was excluded due to the low reliability of methylation measure.

The Fernández-Sanlés methylation risk score (MRS) was computed as a standardised weighted sum of 34 CpG sites, with weights defined by the estimates described by the authors in the Supplementary material of their original publication [1]. DNAmGrimAge and other epigenetic clocks were computed using Steve Horvath online DNAmAge calculator.

(<https://horvath.genetics.ucla.edu/html/dnamage/>).

Outcome definition

In EPIC Italy and EXPOsOMICS, incident CVD cases were identified from hospital discharge databases when the clinical record reported the International Classification of Diseases (ICD), Ninth Revision, Clinical Modification code 410, or ICD 410 plus the procedure codes for coronary revascularisation (e.g. percutaneous transluminal coronary angioplasty and coronary artery bypass surgery), including. Suspect CHD events were confirmed when myocardial infarction (MI), acute coronary syndrome, ischaemic cardiomyopathy, coronary or carotid revascularisation, and ischaemic or haemorrhagic stroke were reported in the records, supported by information on onset symptoms, levels of cardiac enzymes and troponins, and electrocardiographic data coded according to the Minnesota Code. Cases were cross-checked with mortality files to identify fatal and nonfatal cases (the latter defined as alive 28 days after diagnosis). Study participants with CHD at cohort entry were identified from the baseline questionnaire, from linkage with hospital discharge records, or by direct examination of clinical

records, and were excluded from this study. In NICOLA and HRS, we defined CVD events accordingly with the definition used in the training set (EPIC Italy).

Statistical analyses

Development and validation of DNAm surrogates

We developed DNAm surrogates for BMI, systolic and diastolic blood pressure, and ten blood measured biomarkers. We used the EPIC Italy data set randomly split into training ($N=1352$; 75% of the sample) and test set ($N=451$; 25% of the sample). For each risk factor/biomarker, we created a DNAm surrogate through a three-step procedure:

- (1) We identified risk factors/biomarkers showing significant differences across EPIC Italy centres (Turin, Varese, Naples, Ragusa) via ANOVA analyses. We employed a linear model with a random intercept component, accounting for differences across centres for this subset of biomarkers, consisting of all but PAI-1, CRP, D-dimer, and triglycerides. We used a fixed-effect linear model for the other biomarkers.
- (2) Log-transformed risk factors/biomarkers were regressed on DNAm through a linear model adjusted for age, gender (fixed effect), and centre of recruitment (random effect, where necessary) to identify the top 1% ranked CpGs based on the P value.
- (3) DNAm surrogates of risk factors/biomarkers were constructed, regressing the response variables on the top 1% CpG sites, adjusting for sex and age. Finally, we applied L1 penalised estimation for enforcing sparsity in the regression coefficients employing the LASSO procedure [60] or the corresponding penalised mixed model [61] (for the biomarkers showing difference by centre) depending on the biomarker. For the latter method, ad hoc R routines were devised: the source code is freely available in the form of an R package at <https://github.com/AndreaCappozzo/mixedelnet>.

We validated the DNAm surrogates investigating their association (Pearson correlation coefficients) with the corresponding measured risk factor/biomarker in the EPIC Italy testing set ($N=451$, 25% of the sample), and four additional independent studies: Understanding Society ($N=1174$), TILDA ($N=490$), EXPOsOMICS CVD ($N=315$), and GSE174818 ($N=128$). We used fixed-effect meta-analysis (inverse variance weights) to combine the results across the four validation data sets into a single estimate. As a result, we defined as ‘validated’ DNAm surrogates with significant associations ($P < 0.05$)

in both EPIC Italy and the combined validation sets. As further validation, we investigated the correlation of our newly developed DNAm surrogates with those previously developed for BMI, HDL cholesterol [23], and PAI-1 [11].

Derivation of DNAmCVDscore We developed a blood DNAm-based biomarker (that integrates several DNAm surrogates) for predicting the risk of future CVD events named *DNAmCVDscore*. We used a Cox regression model with elastic net regularisation to regress the time from recruitment to CVD event, and for selecting the most critical features from 60 (standardised: mean = 0, sd = 1) previously described blood DNAm surrogates.

The best λ parameter was derived from tenfold cross-validation to minimise the Harrell’s concordance C-index. The overall procedure includes 1,000 permutations using 80% of the whole EPIC Italy data set each time ($n=1443$). The DNAm surrogates comprising the *DNAmCVDscore* were selected among those with nonzero coefficients in at least half of the permutations. Finally, *DNAmCVDscore* was computed as a linear combination of the selected DNAm surrogates where weights correspond to the average (nonzero) coefficient among the 1,000 permutations.

Validation of DNAmCVDscore and comparison with MRS, SCORE2 and DNAmGrimAge We validated the *DNAmCVDscore* in three independent data sets: EXPOsOMICS CVD, NICOLA, and HRS. Since the EXPOsOMICS CVD set is designed as a case–control study nested in a cohort, we ran logistic regression analyses, and we evaluated the predictive performance of *DNAmCVDscore* through ROC curve analysis. Contrarily, in NICOLA and HRS (cohort studies) we run Cox proportional hazard regression models and we evaluated the prediction performance through the Harrell’s C-index.

We compared the performance of five models:

- (1) Based on *DNAmCVDscore* (adjusted for matching parameters in EXPOsOMICS CVD).
- (2) Based on MRS (adjusted for matching parameters in EXPOsOMICS CVD).
- (3) The SCORE2 prediction model based on chronological age, sex, diabetes, smoking, systolic blood pressure, total and HDL cholesterol, adjusting for matching parameters.
- (4) An enriched version of SCORE2, denoted with *SCORE2 + DNAmCVDscore*, in which *DNAmCVDscore* is included in the set of covariates.
- (5) Based on DNAmGrimAge (adjusted for matching parameters in EXPOsOMICS CVD).

In EXPOsOMICS CVD, to investigate the predictive performance of the five composite biomarkers at different time points, we computed the area under the ROC curve (AUC), sensitivity, and specificity as a function of the time from recruitment to diagnosis, right-censoring follow-up at constant intervals of one year from 18 to 2 years. Confidence intervals for AUC were computed according to De Long et al. [62].

DNAm surrogates and DNAmCVDscore versus COVID-19 case-control status and severity As an additional sensitivity analysis, despite being out of the main scope of this work, we investigated the usefulness of using DNAm surrogate biomarkers in epidemiological studies on COVID-19 using the GSE174818 data set (101 patients with COVID-19 infection and 26 controls hospitalised with respiratory problems). Specifically, we investigated the association of BMI and blood measured CRP with COVID-19 case-control status and severity (using the GRAM score as a proxy), and we compared the results with those obtained using their DNAm surrogates (DNAmBMI and DNAmCRP). Finally, since CVDs and COVID-19 share several risk factors [50] we investigated the association of the *DNAmCVDscore* with COVID-19 case-control status and severity. We used logistic and linear regression models adjusted for age and gender to investigate the association with case-control status and GRAM score, respectively.

Abbreviations

BMI: Body mass index; CRP: C-reactive protein; CVD: Cardiovascular disease; DNAm: DNA methylation; EPIC: European Prospective Investigation into Cancer and Nutrition; EWAS: Epigenome-wide association studies; GDF15: Growth differentiation factor 15; HGF: Hepatocyte growth factor; HRS: The Health and Retirement Study; MRS: Methylation risk score; NICOLA: Northern Ireland Cohort for the Longitudinal Study of Ageing; NCDs: Non-communicable diseases; PAI-1: Plasminogen activator inhibitor-1; sd: Standard deviation; SKR3: Serine/threonine-protein kinase receptor 3; UKHLS: United Kingdom Household Panel Study; WBC: White blood cells.

Supplementary Information

The online version contains supplementary material available at <https://doi.org/10.1186/s13148-022-01341-4>.

Additional file 1. Supplementary Results and Supplementary Figures S1, S2, S3, and S4.

Additional file 2. Supplementary Tables S1, S2, and S3.

Author contributions

AC and GF conceived the study and performed statistical analyses. FI supervised and verified analytical methods. CMC, OR, PV, GS, and RAK supervised the findings of this work. SPoLI and AHO performed and supervised laboratory experiments. All authors discussed the results and contributed writing the final manuscript.

Funding

This work was supported by the Programma Operativo Nazionale (PON), Ricerca e Innovazione 2014–2020, Attrazione e Mobilità Internazionale (AIM) code AIM1874325-2 to G.F., the AIRC grant (Progetto IG2013 N.14410, to C.S.) for DNA methylation experiments in EPIC Italy, the H2020 ‘EXPOsOMICS’ and ‘Lifepath’ grants to P.V. for DNA methylation experiments in EXPOsOMICS CVD and TILDA. O.R. was supported by a UKRI Future Leaders Fellowship (MR/S03532X/1). G.S. is supported by ‘Fondo di Ateneo per la ricerca 2019’; University of Sassari, Italy. Understanding Society is an initiative funded by the Economic and Social Research Council and various Government Departments, with scientific leadership by the Institute for Social and Economic Research, University of Essex, and survey delivery by NatCen Social Research and Kantar Public. The research data are distributed by the UK Data Service. These data are from Understanding Society: The UK Household Longitudinal Study, which is led by the Institute for Social and Economic Research at the University of Essex and funded by the Economic and Social Research Council (Grant Number: ES/M008592/1). Data governance was provided by the METADAC data access committee, funded by ESRC, Wellcome, and MRC. (2015–2018: Grant Number MR/N01104X/1 2018–2020: Grant Number ES/S008349/1). We are grateful to all the participants of NICOLA, and the NICOLA team, which includes nursing staff, research scientists, clerical staff, computer and laboratory technicians, managers and receptionists. This work was supported by the following funders who provide core financial support for the NICOLA Study: the Atlantic Philanthropies; the Economic and Social Research Council; the UKCRC Centre of Excellence for Public Health Northern Ireland; the Centre for Ageing Research and Development in Ireland; the Office of the First Minister and Deputy First Minister; the Health and Social Care Research and Development Division of the Public Health Agency; the Wellcome Trust/Wolfson Foundation; and Queen’s University Belfast.

Availability of data and materials

DNAm data used in this study are available at the GEO repository under accession numbers GSE51032 (subset of EPIC Italy) and GSE174818 (COVID-19 case-control). DNAm data from TILDA, EXPOsOMICS, NICOLA, and EPIC Italy are available upon request at the study PIs/ Data Access Committees. For HRS, three categories of data: public, sensitive, and restricted, can be accessed through procedures described on the HRS website (hrsonline.isr.umich.edu). Understanding Society data were collected by NatCen, and the genome-wide scan data were analysed by the Wellcome Trust Sanger Institute. Information on how to access the data can be found on the Understanding Society website <https://www.understandingsociety.ac.uk/>.

Declarations

Ethics approval and consent to participate

This study complies with the principles of the Declaration of Helsinki; all participants signed informed consent; national ethics committees approved EPIC Italy and TILDA studies as reported elsewhere [17]. The Understanding Society study has been approved by the University of Essex ethics committee. Approval from the National Research Ethics Service was obtained for the collection of biosocial data by trained nurses in wave 2 and of the main Understanding Society survey. The HRS study protocol was approved by the University of Michigan Institutional Review Board. The NICOLA study protocol was approved by the School of Medicine, Dentistry and Biomedical Sciences Ethics Committee, Queen’s University Belfast. This study follows the Strengthening the Reporting of OBServational studies in Epidemiology (STROBE) guidelines.

Competing interests

The authors declare no conflict of interest.

Author details

¹MOX - Laboratory for Modeling and Scientific Computing, Department of Mathematics, Politecnico di Milano, Milan, Italy. ²Department of Medical Gerontology, Trinity College Dublin, Dublin, Ireland. ³MRC-PHE Centre for Environment and Health, Imperial College London, London, UK. ⁴The Alan Turing Institute, London, UK. ⁵Unit of Cancer Epidemiology, Città della Salute della Scienza University-Hospital, Turin, Italy. ⁶Fondazione IRCCS - Istituto Nazionale dei Tumori, Milan, Italy. ⁷Department of Clinical Medicine and Surgery,

University of Naples Federico II, Naples, Italy. ⁸Association for Epidemiology Research, AIRE ONLYS, Ragusa, Italy. ⁹Department of Epidemiology and Prevention, IRCCS NEUROMED, Pozzilli, Italy. ¹⁰Department of Medicine and Surgery, Research Center in Epidemiology and Preventive Medicine (EPIMED), Turin, Italy. ¹¹Epidemiology Unit, Regional Health Service TO3, Grugliasco, Italy. ¹²Department of Clinical and Biological Sciences, Centre for Biostatistics, Epidemiology, and Public Health (C-BEPH), University of Turin, Turin, Italy. ¹³Department of Mental, Physical Health and Preventive Medicine, University of Campania 'Luigi Vanvitelli', Caserta, Italy. ¹⁴Centre for Public Health, Queen's University Belfast, Belfast, UK. ¹⁵Leonard Davis School of Gerontology, University of Southern California, Los Angeles, CA, USA. ¹⁶Italian Institute for Genomic Medicine (IIGM), Turin, Italy. ¹⁷Laboratory Biostatistics, Department of Biomedical Sciences, University of Sassari, Via Padre Manzella 4, Sassari, Italy. ¹⁸CHDS - Health Data Science Center, Human Technopole, Milan, Italy.

Received: 24 May 2022 Accepted: 13 September 2022

Published online: 29 September 2022

References

- Fernández-Sanlés A, Sayols-Baixeras S, Subirana I, Sentí M, Pérez-Fernández S, de Castro MM, et al. DNA methylation biomarkers of myocardial infarction and cardiovascular disease. *Clin Epigenetics*. 2021;13(1):1–11.
- Westerman K, Fernández-Sanlés A, Patil P, Sebastiani P, Jacques P, Starr JM, et al. Epigenomic assessment of cardiovascular disease risk and interactions with traditional risk metrics. *J Am Heart Assoc*. 2020;9(8):e015299.
- Hidalgo BA, Minniefield B, Patki A, Tanner R, Bagheri M, Tiwari HK, et al. A 6-CpG validated methylation risk score model for metabolic syndrome: The HyperGEN and GOLDN studies. *PLoS One*. 2021;16(11):e0259836.
- Odintsova VV, Rebattu V, Hagenbeek FA, Pool R, Beck JJ, Ehli EA, et al. Predicting complex traits and exposures from polygenic scores and blood and buccal DNA methylation profiles. *Front Psychiat*. 2021;12:688464.
- Zheng Y, Chen Z, Pearson T, Zhao J, Hu H, Prospero M. Design and methodology challenges of environment-wide association studies: a systematic review. *Environ Res*. 2020;183:109275.
- Allione A, Marcon F, Fiorito G, Guarrera S, Siniscalchi E, Zijno A, et al. Novel epigenetic changes unveiled by monozygotic twins discordant for smoking habits. *PLoS One*. 2015;10:e0128265.
- Guida F, Sandanger TM, Castagné R, Campanella G, Polidoro S, Palli D, et al. Dynamics of smoking-induced genome-wide methylation changes with time since smoking cessation. *Hum Mol Genet*. 2015;24(8):2349–59.
- Guarrera S, Fiorito G, Onland-Moret NC, Russo A, Agnoli C, Allione A, et al. Gene-specific DNA methylation profiles and LINE-1 hypomethylation are associated with myocardial infarction risk. *Clin Epigenetics*. 2015;7:1–12.
- D'Agostino RB, Vasan RS, Pencina MJ, Wolf PA, Cobain M, Massaro JM, et al. General cardiovascular risk profile for use in primary care: the Framingham heart study. *Circulation*. 2008;117(6):743–75.
- Cardiovascular S working group and E. SCORE2 risk prediction algorithms: New models to estimate 10-year risk of cardiovascular disease in Europe. *Eur Heart J*. 2021
- Lu AT, Quach A, Wilson JG, Reiner AP, Aviv A, Raj K, et al. DNA methylation GrimAge strongly predicts lifespan and healthspan. *Aging (Albany NY)*. 2019;11(2):303.
- Levine ME, Lu AT, Quach A, Chen BH, Assimes TL, Bandinelli S, et al. An epigenetic biomarker of aging for lifespan and healthspan. *Aging (Albany NY)*. 2018;10(4):573.
- Belsky DW, Huffman KM, Pieper CF, Shalev I, Kraus WE, Anderson R. Change in the rate of biological aging in response to caloric restriction: Calerie Biobank analysis. *J Gerontol: Ser A Biol Sci Med Sci*. 2018;73(1):4–10.
- Horvath S, Raj K. DNA methylation-based biomarkers and the epigenetic clock theory of ageing. *Nat Rev Genet*. 2018;19(6):371–84.
- Freni-Sterrantino A, Salerno V. A plea for the need to investigate the health effects of gig-economy. *Front Public Heal*. 2021;9:638767.
- Fiorito G, Polidoro S, Dugué P-A, Kivimaki M, Ponzi E, Matullo G, et al. Social adversity and epigenetic aging: a multi-cohort study on socio-economic differences in peripheral blood DNA methylation. *Sci Rep*. 2017;7:1–12.
- Fiorito G, McCrory C, Robinson O, Carmeli C, Rosales CO, Zhang Y, et al. Socioeconomic position, lifestyle habits and biomarkers of epigenetic aging: a multi-cohort analysis. *Aging (Albany NY)*. 2019;11:2045–70.
- Freni-Sterrantino A, Fiorito G, D'Errico A, Robinson O, Virtanen M, Alamaursula L, et al. Work-related stress and well-being in association with epigenetic age acceleration: a Northern Finland birth cohort 1966 study. *Aging (Albany NY)*. 2022;14:1128.
- McCrory C, Fiorito G, Hernandez B, Polidoro S, O'Halloran AM, Hever A, et al. GrimAge outperforms other epigenetic clocks in the prediction of age-related clinical phenotypes and all-cause mortality. *J Gerontol Ser A*. 2020;76(5):741–9.
- Oblak L, van der Zaag J, Higgins-Chen AT, Levine ME, Boks MP. A systematic review of biological, social and environmental factors associated with epigenetic clock acceleration. *Ageing Res Rev*. 2021;69:101348.
- Fiorito G, Pedron S, Ochoa-Rosales C, McCrory C, Polidoro S, Zhang Y, et al. The role of epigenetic clocks in explaining educational inequalities in mortality: a multi-cohort study and meta-analysis. *J Gerontol Ser A*. 2022;77(9):1750–9.
- Colicino E, Just A, Kioumourtzoglou MA, Vokonas P, Cardenas A, Sparrow D, et al. Blood DNA methylation biomarkers of cumulative lead exposure in adults. *J Expo Sci Environ Epidemiol*. 2021;31(1):108–16.
- Hillary RF, Marioni RE. MethylDetectR: a software for methylation-based health profiling. *Wellcome Open Res*. 2020;5:283.
- Stevenson AJ, McCartney DL, Hillary RF, Campbell A, Morris SW, Birmingham ML, et al. Characterisation of an inflammation-related epigenetic score and its association with cognitive ability. *Clin Epigenetics*. 2020;12(1):1–11.
- Stevenson AJ, Gadd DA, Hillary RF, McCartney DL, Campbell A, Walker RM, et al. Creating and validating a DNA methylation-based proxy for interleukin-6. *J Gerontol Ser A*. 2021;76(12):2284–92.
- Gadd DA, Hillary RF, McCartney DL, Zaghlool SB, Stevenson AJ, Cheng Y, et al. Epigenetic scores for the circulating proteome as tools for disease prediction. *Elife*. 2022;11:e71802.
- Thompson M, Hill B, Rokocz N, Chiang JN, IPH, Sankararaman S, et al. Methylation risk scores are associated with a collection of phenotypes within electronic health record systems. *NPJ Genom Med*. 2022;7(1):50.
- Zhang Y, Elgizouli M, Schöttker B, Holleczer B, Nieters A, Brenner H. Smoking-associated DNA methylation markers predict lung cancer incidence. *Clin Epigenetics*. 2016;8(1):1–12.
- Green C, Shen X, Stevenson AJ, Conole ELS, Harris MA, Barbu MC, et al. Structural brain correlates of serum and epigenetic markers of inflammation in major depressive disorder. *Brain Behav Immun*. 2021;92:39–48.
- Fiorito G, Vlaanderen J, Polidoro S, Gulliver J, Galassi C, Ranzi A, et al. Oxidative stress and inflammation mediate the effect of air pollution on cardio- and cerebrovascular disease: a prospective study in nonsmokers. *Environ Mol Mutagen*. 2018;59:234–46.
- Benzeval M, Davillas A, Kumari M, Lynn P. Understanding society: the UK household longitudinal study: biomarker user guide and glossary. *Inst Soc Econ Res Univ Essex*. Version 1, December 2014. <https://www.understandingsociety.ac.uk/sites/default/files/downloads/documentation/health/user-guides/7251-UnderstandingSociety-Biomarker-UserGuide-2014.pdf>.
- Balnís J, Madrid A, Hogan KJ, Drake LA, Chieng HC, Tiwari A, et al. Blood DNA methylation and COVID-19 outcomes. *Clin Epigenetics*. 2021;13(1):1–16.
- Donoghue OA, McGarrigle CA, Foley M, Fagan A, Meaney J, Kenny RA. Cohort profile update: the Irish longitudinal study on ageing (TILDA). *Int J Epidemiol*. 2018;47(5):1398–1398.
- Cruise S, Kee F. Early key findings from a study of older people in Northern Ireland: the NICOLA study. *Uniw Śląski*. 2017;343–54
- Sonnega A, Faul JD, Ofstedal MB, Langa KM, Phillips JWR, Weir DR. Cohort profile: the health and retirement study (HRS). *Int J Epidemiol*. 2014;43:576–85.
- Neville CE, Cruise SM, Burns F. The northern Ireland cohort for the longitudinal study of ageing (NICOLA). In: Gu D, Dupre ME (eds) *Encyclopedia of Gerontology and Population Aging*. Springer, Cham. 2014; pp 5087–5090.
- Crimmins EM, Thyagarajan B, Levine ME, Weir DR, Faul J. Associations of age, sex, race/ethnicity, and education with 13 epigenetic clocks in a nationally representative US sample: the health and retirement study. *J Gerontol: Ser A Biol Sci Med Sci*. 2021;76(6):1117–23.

38. Houseman EA, Accomando WP, Koestler DC, Christensen BC, Marsit CJ, Nelson HH, et al. DNA methylation arrays as surrogate measures of cell mixture distribution. *BMC Bioinform.* 2012;13(1):1–16.
39. Battram T, Yousefi P, Crawford G, Prince C, Babaei MS, Sharp G, et al. The EWAS Catalog: a database of epigenome-wide association studies. *Wellcome Open Res.* 2022;7:41.
40. Jahangiry L, Farhangy MA, Rezaei F. Framingham risk score for estimation of 10-years of cardiovascular diseases risk in patients with metabolic syndrome. *J Heal Popul Nutr.* 2017;36(1):1–6.
41. Franceschi C, Garagnani P, Parini P, Giuliani C, Santoro A. Inflammaging: a new immune–metabolic viewpoint for age-related diseases. *Nat Rev Endocrinol.* 2018;14(10):576–90.
42. Fiorito G, Caini S, Palli D, Bendinelli B, Saieva C, Ermini I, et al. DNA methylation-based biomarkers of aging were slowed down in a two-year diet and physical activity intervention trial: the DAMA study. *Aging Cell.* 2021;20(10):e13439.
43. Rider CF, Carlsten C. Air pollution and DNA methylation: effects of exposure in humans. *Clin Epigenetics.* 2019;11(1):1–15.
44. Maugeri A, Barchitta M. How dietary factors affect DNA methylation: lesson from epidemiological studies. *Medicina.* 2020;56(8):374.
45. Pain O, Glanville KP, Hagenaars SP, Selzam S, Furtjes AE, Gaspar HA, et al. Evaluation of polygenic prediction methodology within a reference-standardized framework. *PLoS Genet.* 2021;17(5):e1009021.
46. Higgins-Chen AT, Thrush KL, Wang Y, Kuo P-L, Minter CJ, Zenobia Moore A, et al. A computational solution for bolstering reliability of epigenetic clocks: Implications for clinical trials and longitudinal tracking. *Nat Aging.* 2022;2:644–61.
47. Dudbridge F. Criteria for evaluating risk prediction of multiple outcomes. *Stat Methods Med Res.* 2020;29(12):3492–510.
48. Riley RD, Snell KIE, Martin GP, Whittle R, Archer L, Sperrin M, et al. Penalization and shrinkage methods produced unreliable clinical prediction models especially when sample size was small. *J Clin Epidemiol.* 2021;132:88–96.
49. Sachs MC, Sjölander A, Gabriel EE. Aim for clinical utility, Not just predictive accuracy. *Epidemiology.* 2020;31:359.
50. Courtin E, Vineis P. COVID-19 as a Syndemic. *Front Public Heal.* 2021;9:763830.
51. Vineis P. COVID-19 as a syndemic: from inequalities to biological embodiment. *Eur J Public Health.* 2021;31(Supplement_3):ckab164-004.
52. George A, Hardy R, Castillo Fernandez J, Kelly Y, Maddock J. Life course socioeconomic position and DNA methylation age acceleration in mid-life. *J Epidemiol Commun Health.* 2021;75(11):1084–90.
53. Riboli E, Hunt K, Slimani N, Ferrari P, Norat T, Fahey M, et al. European prospective investigation into cancer and nutrition (EPIC): study populations and data collection. *Public Health Nutr.* 2002;5(6b):1113–24.
54. Iacoviello L, Agnoli C, De Curtis A, Di Castelnuovo A, Giurdanella MC, Krogh V, et al. Type 1 plasminogen activator inhibitor as a common risk factor for cancer and ischaemic vascular disease: the EPICOR study. *BMJ Open.* 2013;3(11):e003725.
55. Gagliardi A, Dugué P-A, Nøst TH, Southey MC, Buchanan DD, Schmidt DF, et al. Stochastic epigenetic mutations are associated with risk of breast cancer, lung cancer, and mature B-cell neoplasms. *Cancer Epidemiol Biomarkers Prev.* 2020;29(10):2026–37.
56. Fiorito G, Guarrera S, Valle C, Ricceri F, Russo A, Grioni S, et al. B-vitamins intake, DNA-methylation of one carbon metabolism and homocysteine pathway genes and myocardial infarction risk: the EPICOR study. *Nutr Metab Cardiovasc Dis.* 2014;24:483–8.
57. Understanding Society: design overview. *Longit Life Course Stud.* 2012;3(1).
58. Campanella G, Polidoro S, Di Gaetano C, Fiorito G, Guarrera S, Krogh V, et al. Epigenetic signatures of internal migration in Italy. *Int J Epidemiol.* 2015;44:1442–9.
59. Chen YA, Lemire M, Choufani S, Butcher DT, Grafodatskaya D, Zanke BW, et al. Discovery of cross-reactive probes and polymorphic CpGs in the illumina Infinium HumanMethylation450 microarray. *Epigenetics.* 2013;8(2):203–9.
60. Tibshirani R. Regression shrinkage and selection via the lasso. *J R Stat Soc Ser B.* 1996;58(1):267–88.
61. Rohart F, San Cristobal M, Laurent B. Selection of fixed effects in high dimensional linear mixed models using a multicycle ECM algorithm. *Comput Stat Data Anal.* 2014;80:209–22.
62. DeLong ER, DeLong DM, Clarke-Pearson DL. Comparing the Areas under two or more correlated receiver operating characteristic curves: a non-parametric approach. *Biometrics.* 1988;44(3):837–45.

Publisher's Note

Springer Nature remains neutral with regard to jurisdictional claims in published maps and institutional affiliations.

Ready to submit your research? Choose BMC and benefit from:

- fast, convenient online submission
- thorough peer review by experienced researchers in your field
- rapid publication on acceptance
- support for research data, including large and complex data types
- gold Open Access which fosters wider collaboration and increased citations
- maximum visibility for your research: over 100M website views per year

At BMC, research is always in progress.

Learn more biomedcentral.com/submissions

