

RESEARCH

Open Access



The choroid plexus: a door between the blood and the brain for tissue-type plasminogen activator

Vincent Zuba^{1†}, Jonathane Furon^{1†}, Mathys Bellemain-Sagnard¹, Sara Martinez de Lazarrondo¹, Laurent Lebouvier¹, Marina Rubio¹, Yannick Hommet¹, Maxime Gauberti¹, Denis Vivien^{1,2†} and Carine Ali^{1*†}

Abstract

Background: In the vascular compartment, the serine protease tissue-type plasminogen activator (tPA) promotes fibrinolysis, justifying its clinical use against vasculo-occlusive diseases. Accumulating evidence shows that circulating tPA (endogenous or exogenous) also controls brain physiopathological processes, like cerebrovascular reactivity, blood–brain barrier (BBB) homeostasis, inflammation and neuronal fate. Whether this occurs by direct actions on parenchymal cells and/or indirectly via barriers between the blood and the central nervous system (CNS) remains unclear. Here, we postulated that vascular tPA can reach the brain parenchyma via the blood-cerebrospinal fluid barrier (BCSFB), that relies on choroid plexus (CP) epithelial cells (CPECs).

Methods: We produced various reporter fusion proteins to track tPA in primary cultures of CPECs, in CP explants and in vivo in mice. We also investigated the mechanisms underlying tPA transport across the BCSFB, with pharmacological and molecular approaches.

Results: We first demonstrated that tPA can be internalized by CPECs in primary cultures and in ex vivo CPs explants. In vivo, tPA can also be internalized by CPECs both at their basal and apical sides. After intra-vascular administration, tPA can reach the cerebral spinal fluid (CSF) and the brain parenchyma. Further investigation allowed discovering that the transcytosis of tPA is mediated by Low-density-Lipoprotein Related Protein-1 (LRP1) expressed at the surface of CPECs and depends on the finger domain of tPA. Interestingly, albumin, which has a size comparable to that of tPA, does not normally cross the CPs, but switches to a transportable form when grafted to the finger domain of tPA.

Conclusions: These findings provide new insights on how vascular tPA can reach the brain parenchyma, and open therapeutic avenues for CNS disorders.

Keywords: Tissue-type plasminogen activator, Choroid plexus, Epithelium, Low density lipoprotein receptor-related protein, Barrier, Transport, Finger domain, Drug delivery

Background

The blood–brain barrier (BBB) has often been considered as being “the” barrier of the CNS. However, over the past 10 years, choroid plexuses (CP) have (re)emerged as another critical interface, fulfilling essential functions for CNS homeostasis [43]. Floating in brain ventricles, CPs were originally described as being responsible for the secretion of the cerebrospinal fluid (CSF), with critical

[†]Vincent Zuba and Jonathane Furon equally contributed to this work

[†]Denis Vivien and Carine Ali equally contributed to this work

*Correspondence: ali@cyceron.fr

¹ Physiopathology and Imaging of Neurological Disorders, Normandie Univ, UNICAEN, INSERM, INSERM UMR-S U1237, Institut Blood and Brain @ Caen-Normandie, GIP Cyceron, Boulevard Becquerel, 14074 Caen, France
Full list of author information is available at the end of the article



© The Author(s) 2022. **Open Access** This article is licensed under a Creative Commons Attribution 4.0 International License, which permits use, sharing, adaptation, distribution and reproduction in any medium or format, as long as you give appropriate credit to the original author(s) and the source, provide a link to the Creative Commons licence, and indicate if changes were made. The images or other third party material in this article are included in the article's Creative Commons licence, unless indicated otherwise in a credit line to the material. If material is not included in the article's Creative Commons licence and your intended use is not permitted by statutory regulation or exceeds the permitted use, you will need to obtain permission directly from the copyright holder. To view a copy of this licence, visit <http://creativecommons.org/licenses/by/4.0/>. The Creative Commons Public Domain Dedication waiver (<http://creativecommons.org/publicdomain/zero/1.0/>) applies to the data made available in this article, unless otherwise stated in a credit line to the data.

consequences on intracranial pressure [12]. Among others, under physiological conditions, CPs also have functions of sensor, neurotrophic niche, and regulator of some behaviours [2, 17, 34, 36]. CPs participate in the pathogenesis and progression of various neurological diseases as well as in the spread of inflammatory responses from the periphery to the CNS [5, 9, 20, 22, 28, 31, 33, 35, 44, 46].

CPs consist in a densely vascularized matrix, the stroma, populated by immune cells and surrounded by epithelial cells. Thanks to their apical tight junctions, the choroid plexus epithelial cells (CPECs) form a physical barrier at the interface between the blood and the CSF [13]. Owing to the numerous transporters expressed by CPECs, the blood-CSF barrier (BCSFB) is a real hub of exchanges [38]. The BCSFB also stands as a target for drug delivery and/or for prevention of entry/accumulation of toxic mediators [6, 37].

In this study, we were interested in a key fibrinolytic protease, tissue-type plasminogen activator (tPA). When released in the bloodstream from endothelial cells and/or hepatocytes [26, 48], tPA can cleave plasminogen into active plasmin, leading to the degradation of fibrin clots [10]. Accordingly, the recombinant form of tPA (Actilyse, Alteplase) is of therapeutic value for several vasculo-occlusive conditions, including pulmonary embolism, deep vein thrombosis and ischemic stroke [18, 21, 45]. Beside fibrinolysis, circulating tPA (endogenous and exogenous) exerts various effects in/on the normal or pathological CNS (for review, see [42]). Some of these cerebral effects of circulating tPA occur by direct actions on the vessel wall. For instance, physiological neurovascular coupling, a phenomenon that links neuronal activity to cerebral blood flow, is tuned by intraluminal tPA acting on N-methyl-D-aspartate receptors (NMDAR) on endothelial cells [1]. Conversely, under pathological conditions, this tPA/NMDAR endothelial partnership promotes BBB leakage and inflammation [29]. Beside these direct effects on the brain vasculature, tPA can also “escape” from the blood [3, 4], and add to parenchymal tPA to increase neuronal activity and neuronal loss [32]. This escape was thought to result from the polarized trans-endothelial transport of tPA, driven by Low-density-Lipoprotein Related Protein-1 (LRP1), a member of the LDL receptor-related protein family [3, 4].

In light of the recent literature about the BCSFB, it is relevant to determine whether—and if so, how—vascular tPA also crosses the CPs. In the present study, we showed that CPECs can uptake tPA coming from the blood or from the CSF and that, CPECs transport vascular tPA and translocate it into the CSF. With in vitro and in vivo models, we showed that the influx of tPA is an active mechanism relying on LRP1 at the surface of CPECs.

Interestingly, we identified the finger domain of tPA as being involved in this uptake, and that grafting this finger domain to albumin, allows its passage through CPECs. Our findings open interesting avenues for new strategies of drug delivery and maybe for a safer use of tPA during stroke, as blocking its entry in the brain parenchyma would prevent its pro-neurotoxic effect without affecting its beneficial thrombolytic action.

Materials and methods

Labelling of recombinant proteins with AlexaFluor®

Apart from BSA coupled to AlexaFluor⁴⁸⁸ or AlexaFluor⁵⁵⁵, which were commercially available (Life Technologies), recombinant proteins were conjugated to AlexaFluor⁴⁸⁸ or AlexaFluor⁵⁵⁵ as follows. For tPA, Actilyse® (Boehringer Ingelheim) was first dialyzed in a 0.3 M bicarbonate buffer, pH 8.4, at 4° C for 48 h, in order to remove excipients, in particular arginine (the dialysis buffer was changed every twelve hours). Next, recombinant proteins were mixed with 1 mg of AlexaFluor⁵⁵⁵ ($\lambda_{\text{excitation}}$: 555 nm; $\lambda_{\text{emission}}$: 592 nm) or AlexaFluor⁴⁸⁸ ($\lambda_{\text{excitation}}$: 494 nm and $\lambda_{\text{emission}}$: 517 nm) Succinimidyl Ester (Life Technologies), diluted in 100µL of dimethyl sulfoxide, for 6 h at room temperature and with constant stirring. In order to remove excess AlexaFluor, the solution was dialyzed in a bicarbonate buffer first, and then in a phosphate buffered saline containing arginine hydrochloride to avoid protein precipitation.

Production of recombinant Δ F-tPA and F-BSA

HEK293/FRT cells were used as the eukaryotic system for production of recombinant proteins with the Flp-in system (ThermoFisher scientific). After selection with hygromycin B, stable cells were placed in production without serum (60 petri dishes per protein, diameter 10 cm), culture media were changed every 4 days for 12 days. The PCDNA3.1-Rattus tPA delta finger construct was made from the PCDNA3.1-Rattus-tPA vector. The latter is constructed like this: ATG-6His-BamHI-tPA-Stop-XhoI. tPA delta finger was amplified by PCR from amino acid 79 of tPA of PCDNA3.1-Rattus tPA (beginning of the EGF like domain) to the stop and cloned between BamHI and XhoI of the PCDNA3.1-Rattus tPA construct. We thus obtained ATG-6His-BamHI-tPA delta finger-Stop-XhoI. The human albumin cDNA was purchased from GenScript (vector pcDNA3.1 + /C-(K)DYK-Albumin, #OHu18744). We amplified the cDNA of the finger domain by PCR from a PCDNA5.1-Rattus tPA construct (finger: 36->78), the domain was amplified with ATG, the signal peptide for secretion and the 6his tag of the PCDNA5.1-Rattus tPA construct. It was then cloned between NheI and HindIII of the pcDNA3.1 + /C-(K)

DYK-Albumin vector. Finally we obtained an amino terminal cloning: ATG-6His-Finger-Albumin-Stop.

The 6xHistidine fused to the N-terminal of Δ F-tPA and of F-BSA allows purification of recombinant proteins by high performance liquid chromatography using Nickel-Nitrilo-triAcetic Acid affinity columns (Ni-NTA, GE Healthcare) and a mobile phase imidazole gradient. Positive elutions were pooled, concentrated and dialyzed in phosphate buffer. The Δ F-tPA and F-BSA proteins were then coupled to AlexaFluor⁴⁸⁸ and AlexaFluor⁵⁵⁵, respectively, as described above, except that there was no initial dialysis.

Animals

Eight weeks old male Swiss mice (35–45 g, Centre Universitaire de Ressources Biologiques, Normandy University, Caen, France) were housed at 21 °C in a 12-h light/dark cycle with food and water ad libitum. All procedures with anaesthesia were performed by an initial exposure to 5% isoflurane, followed by a maintaining phase of 1.5–2% isoflurane 30%O₂/70%N₂O.

Intravenous (IV) Injection of Alexa-coupled recombinant proteins, CSF sampling and tissue collection

Anesthetized mice were placed in a stereotaxic frame. Recombinant proteins were injected in the tail vein, in 200 μ L of saline (0.9% NaCl) over approximately 5 s.

Following the IV injection, the mice were kept anesthetized in the stereotaxic frame and monitored while awaiting for the sampling of CSF and brain. Lidocaine (a local pain reliever) was applied on the incision plan 5 min before starting surgery. The upper muscular planes of the neck were detached and spread apart in order to unmask the *cisterna magna*. Once the cistern was unmasked, a glass micropipette was inserted in order to collect the CSF (up to 7–8 μ L), which was transferred in a tube on dry ice and stored at – 80 °C. Mice were immediately subjected to intracardiac perfusion of heparinized saline at 4 °C followed by a phosphate buffer solution, 0.1 M and pH 7.4, with 4% paraformaldehyde. Following perfusion, the brain and cerebellum were extracted and placed in a phosphate buffered saline (PBS) solution containing 20% sucrose for 48 h (renewed four times). Tissues were included in CryomatrixTM (Thermo Scientific) and stored

at – 80 °C. Ten μ m thick sections were made using a cryostat (Leica, CM3050S), placed on poly-lysine slides and were stored at – 80 °C.

Immunohistochemistry

Tissue sections were rinsed and rehydrated in PBS and are then incubated in a PBS solution containing 0.25% of Triton X-100 overnight at room temperature and in a humid atmosphere, with an anti-TTR antibody to label the CPECs (1:1000; Abcam 9015) or anti.

CD-31, a marker of the endothelium (1:1000; BD Pharmingen 553,370). The next day sections were incubated in PBS containing 0.25% TritonTM X-100 and Fab'2 fragments directed against the host species primary antibody (1:1000; Jackson ImmunoResearch) for 90 min at room temperature and humid atmosphere. Sections were covered with an assembly medium (Fluoromount-G[®], SouthernBiotech) containing, or not, DAPI and a coverslip. The slides were then observed and microphotographed with an inverted confocal microscope (Leica TCS SP8) to be analysed with Fiji Is Just ImageJ. For each animal, a dozen images were acquired on 5 Sects. (4 of the brain and one of the cerebellum). On each image, the CPECs were manually counted, thanks to TTR immunostaining, as well as the spots of fluorescence within CPECs.

A subset of slices was also stained with an antibody against NeuN (mouse monoclonal antibody MAB377; 1:500; Merck Millipore, Alexa⁶⁴⁷-conjugated secondary antibody donkey anti-mouse, 1:800, Jackson ImmunoResearch) to determine if tPA⁵⁵⁵ can be detected in the brain parenchyma (30 min after intravenous administration).

tPA/BSA levels in the CSF

After addition of loading buffer (Sucrose, SDS, Bromophenol Blue), the CSF samples (5 μ l) were subjected to electrophoresis (SDS-PAGE) under non-reducing conditions (200 V, 50 min) on a 10% polyacrylamide gel. The fluorescence signal was measured in the gel using an ImageQuantTM LAS 4000 camera (GE Healthcare), and the signal quantification was done with Fiji is just ImageJ. Alternatively, tPA was immunodetected after transfer onto a PVDF membrane, using a goat anti-tPA antibody (1:500) and a peroxidase-conjugated secondary antibody (1/160000).

(See figure on next page.)

Fig. 1 CPECs uptake tPA in vitro. **A** Photomicrographs show that both CPECs in culture (top panel) and CPECs in situ (lower panel) express the marker TTR (white) and tight junctions (Occludin, yellow), scale bar 30 μ m. **B–E** Primary cultures of CPECs were exposed to 40 nM tPA⁵⁵⁵ for 5–60 min (**B–C**) or to tPA⁵⁵⁵ (20–400 nM) for 15 min (**D–E**). **B, D** Photomicrographs (representative of n = 4) show time- and dose-dependent accumulation of tPA⁵⁵⁵ (magenta) in cell monolayers. Higher magnifications suggest an accumulation in vesicles; scale bar 40 μ m. **C, E** Electrophoresis (representative of n = 4) and corresponding quantifications of fluorescence (expressed as percentage of maximal uptake; mean \pm SEM; n = 4) of protein extracts from monolayer of CPECs exposed to tPA⁵⁵⁵ (40 nM) for 5–60 min (**B–C**) or to 20–400 nM tPA⁵⁵⁵ for 15 min (**D–E**). * Significant difference ($p < 0.05$), \$ significant difference versus control ($p < 0.05$)

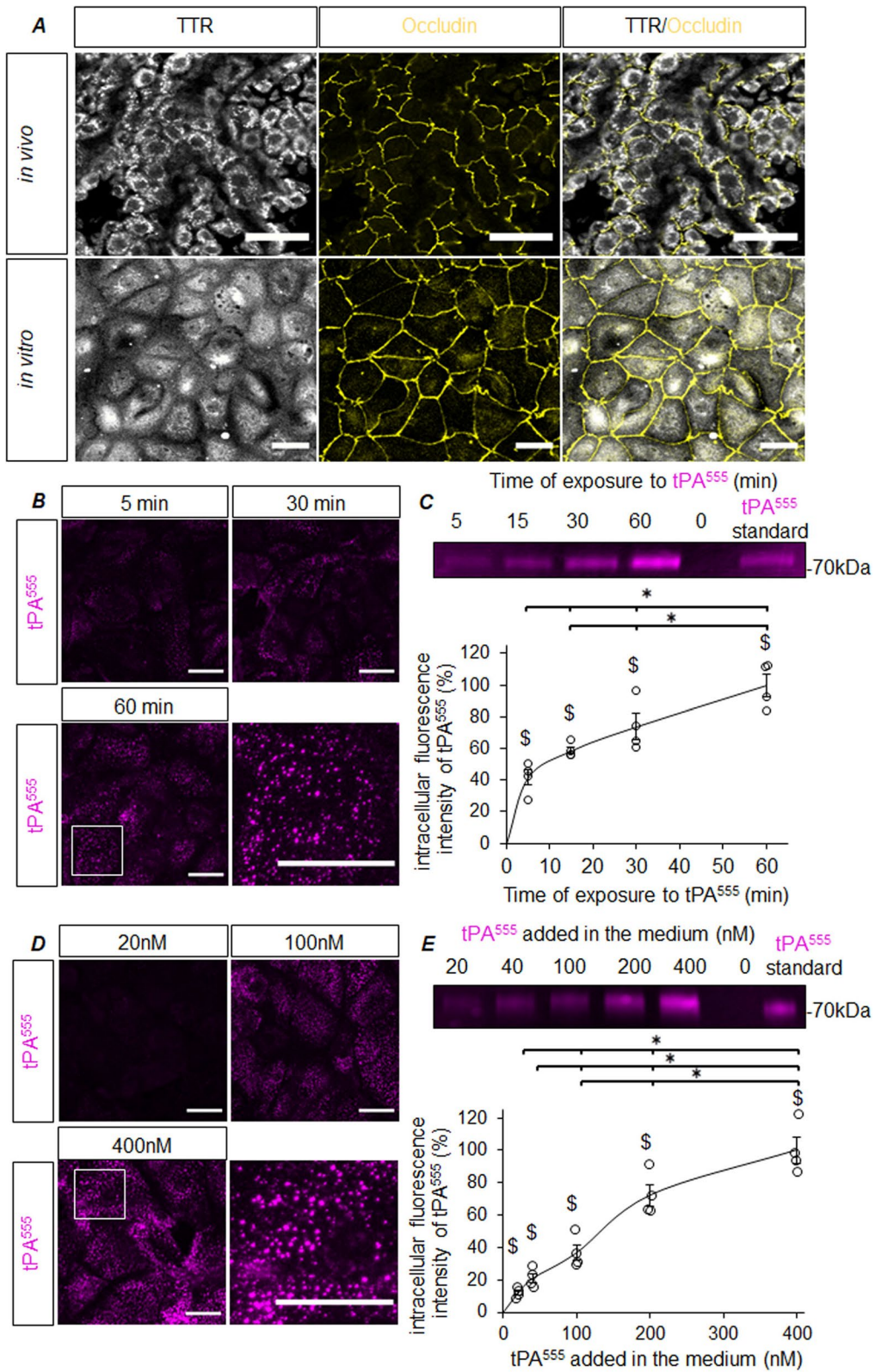


Fig. 1 (See legend on previous page.)

Primary cultures of CPECs

The CPECs were isolated based on a protocol described in rats by Monnot & Zheng [30], with some modifications. After cervical dislocation, preceded by deep anaesthesia with 5% isoflurane (in 30% O₂ / 70% N₂O), and recovery of the brains of ten 8-week-old Swiss mice, the plexuses from 3rd and 4th ventricles and lateral ventricles were dissected under a binocular lens. The plexuses were diluted in 1 ml of ice-cold HBSS (Hank's Balanced Salt Solution, Sigma) and underwent enzymatic digestion with pronase (Pronase E from *Streptomyces griseus*, Serva Electrophoresis) at 2 mg/ml for 20 min at 37 °C and 5% CO₂. Digestion was stopped by adding 4 mL of ice-cold HBSS. The plexus clusters were centrifuged at 4 °C for 5 min at 800g, the supernatant, which mainly contains debris, was removed, the pellet suspended in 6 ml of ice-cold HBSS, centrifuged again at 800 g for 5 min. The pellet was then suspended in 2 ml of growth medium (sodium pyruvate 110 µg/ml, glutamine 2 mM, fetal calf serum 10%, epidermal growth factor 0.01 mg/ml and 1% of diluted penicillin/streptomycin in Essential Medium Modified by Dulbecco, DMEM) at 37 °C then mechanically dissociated using a syringe with a 21G needle. The dissociated cells were firstly seeded in a 35 mm dish and incubated at 37 °C and 5% CO₂ for 4 h so that the fibroblasts and macrophages adhere to the plastic. After 4 h, CPECs in suspension in the dish were collected and seeded in 24-well plates previously treated with type I collagen from rat tail (Cultrex™) at 0.1 mg/mL in acetic acid 0.02 M. After 48 h, the plates were rinsed with PBS and the medium was replaced by medium supplemented with cytosine arabinoside (Ara-C). Cells were then rinsed, and the medium changed every other day until use after 8 days in vitro. The continued presence of the inhibitor of DNA synthesis Ara-C specifically inhibits the growth of contaminating cells such as stromal fibroblasts. Unlike CPECs, these cells express nucleoside transporters unable to distinguish ribose and arabinose residues and thus incorporate Ara-C into their genomic DNA, which results in specific suppression of their growth [25].

Internalization of tPA by cultured CPECs

Cultured CPECs were rinsed twice with PBS at 37 °C, then maintained for 1 h in a serum-free medium, and treated with tPA⁵⁵⁵ (at the indicated doses/durations).

After treatment, cells were rinsed three times with cold PBS. Proteins were extracted at 4 °C in a 50 mM Tris–HCl buffer, pH 7.4, 150 mM NaCl and 0.5% Triton™ X-100 (TNT buffer) supplemented with protease and phosphatase inhibitors 1 µg/mL. After centrifugation (12000g at 4 °C for 20 min), the supernatants were collected and then assayed using the Pierce BCA Protein assay kit. After adding loading buffer (Sucrose, SDS, Bromophenol Blue), the total proteins were separated according to their molecular mass by electrophoresis (SDS-PAGE) on a 10% polyacrylamide gel under non-reducing conditions (200 V, 50 min). The fluorescence of tPA⁵⁵⁵ was detected directly in the gel with an ImageQuant™ LAS 4000 camera, and the signal quantification was done with Fiji Is Just ImageJ.

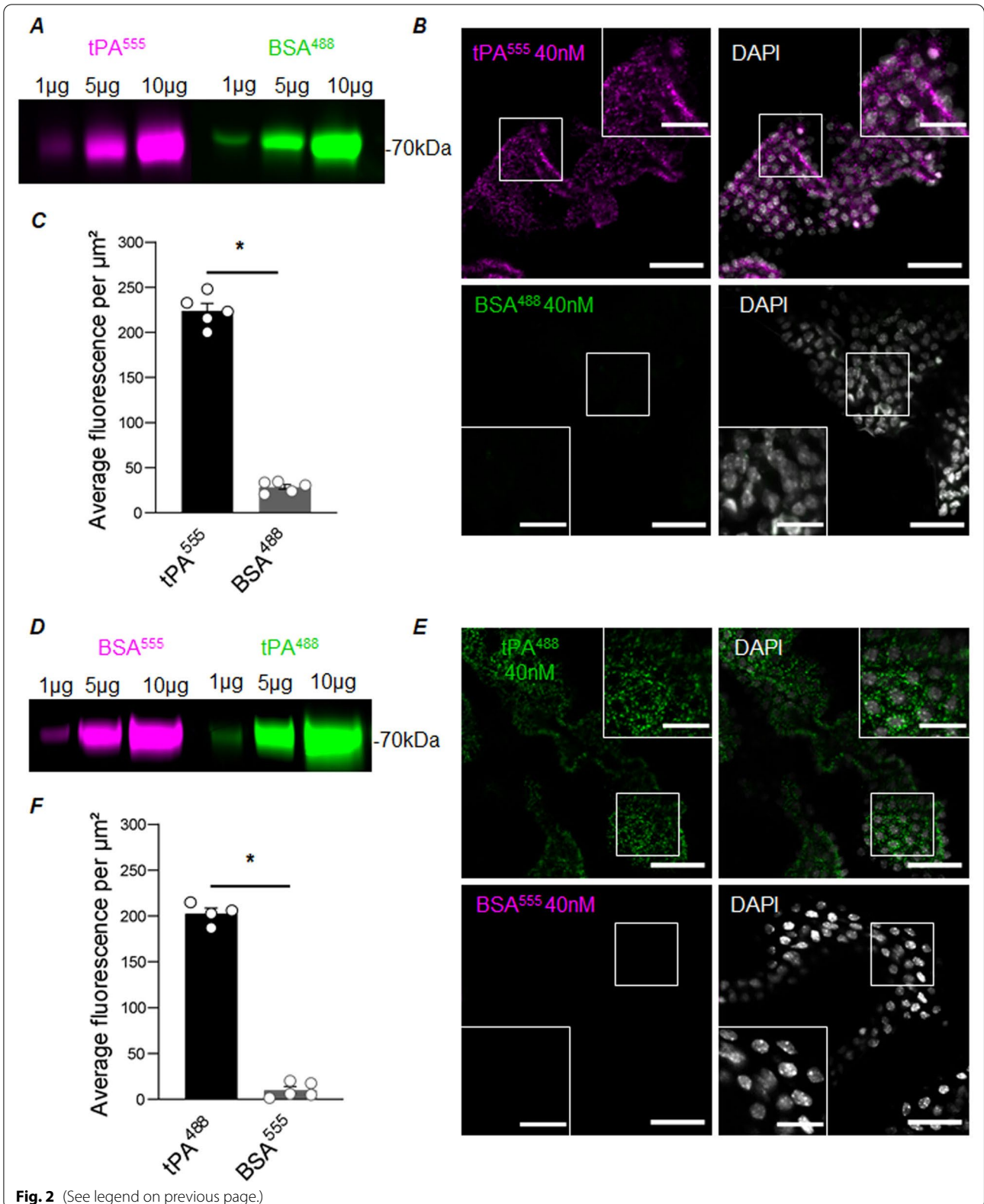
RNA silencing

LRP1 Stealth RNAi™ oligoribonucleotides were transfected at a concentration of 20 nM into CPECs cultures using Lipofectamine 2000 (2 µg, Invitrogen). Sequences were: siLRP1_01 sense UGGCUGACGGGAAACUUCUACUUUG; siLRP1_01 antisense CAAAGUAGAAGUUUCCCGUCAGCCA; siLRP1_02 sense CACACC AUUUGCCGUGACACUGU; siLRP1_02 antisense UACAGUGUCACGGCAAUUGGGUGUG; siLRP1_03 sense CCAAGGUGUGAGGUGAACAAGUGUA; siLRP1_03 antisense UACACUUGUUCACCUCACACCUUGG.

Stealth RNAi™ siRNA Negative Control, Medium GC negative control duplex (Invitrogen™) was used as the control condition (scramble). After 48 h, cells were rinsed 3 times with PBS, and total proteins were recovered. The efficacy of extinction was checked by western blot: after adding loading buffer (Sucrose, SDS, Bromophenol Blue), the total proteins were separated according to their molecular mass by electrophoresis (SDS-PAGE) on a 10% polyacrylamide gel under non-reducing conditions (200 V, 50 min). Then, Proteins were transferred (120 min, 200 mA) onto a cellulose membrane in a humid environment (24 mM Tris, 192 mM glycine, 20% ethanol). Membranes were incubated in a 2% TTBS-BSA solution (Tween Tris Buffered Saline, 10 mM Tris, 200 mM NaCl, 0.1% Tween—2% BSA, pH 7.4) for 1 h and then incubated overnight at 4 °C with the primary anti-LRP1 antibody (Abcam

(See figure on next page.)

Fig. 2 CPECs uptake tPA ex vivo. Freshly isolated CP explants were treated for 15 min with tPA and BSA (40 nM each), alternatively coupled to Alexa⁵⁵⁵ or Alexa⁴⁸⁸. **A** Dose-dependent fluorescent signal generated by tPA⁵⁵⁵ (magenta) and BSA⁴⁸⁸ (green) after SDS-PAGE. **B** Representative confocal photomicrographs of CP explants exposed 15 min to 40 nM of tPA⁵⁵⁵ (magenta), BSA⁴⁸⁸ (green) and DAPI staining (white). Scale bar 40 µm and 30 µm in the magnified inserts. **C** Graph shows quantification of fluorescence in CP explants (n = 5, mean ± SEM), * Significant difference (p < 0.05). **D** Dose-dependent fluorescent signal generated by tPA⁴⁸⁸ (green) and BSA⁵⁵⁵ (magenta) after SDS-PAGE. **E** Representative confocal photomicrographs of CP explants exposed 15 min to 40 nM of tPA⁴⁸⁸ (green), BSA⁵⁵⁵ (magenta) and DAPI staining (white). Scale bar 40 µm and 30 µm in the magnified inserts. **F** Graph shows quantification of fluorescence in CP explants (n = 5, mean ± SEM), * Significant difference (p < 0.05)



92,544) diluted 1:1000 in the TTBS-BSA 2% buffer. Membranes were incubated with the secondary antibody coupled to peroxidase, diluted 1:50,000 in 2% TTBS-BSA, for 1 h at room temperature. The detection was performed using the Pierce ECL Plus Western blotting substrate kit, membranes were then placed in the ImageQuant™ LAS 4000 camera and the signal quantification done with Fiji Is Just ImageJ.

Internalization of recombinant proteins on CPs explants

Whole CPs were collected from mice (8-weeks-old Swiss males) and were quickly washed with PBS at 37 °C. They were then exposed for the indicated time to the specified Alexa-conjugated protein. After treatment CPs were rinsed three times with PBS and fixed with 4% paraformaldehyde in PBS 0.1 M and pH 7.4, for 15 min. CPs were mounted in Fluoromount-G® then micro-photographed with an inverted confocal microscope (Leica TCS SP8) to be then analysed with Fiji Is Just ImageJ. The various proteins were quantified by their fluorescence within the CPECs, which were delimited manually.

Statistical analyses

Results are expressed as mean ± the Standard Error of the Mean (SEM). The samples being unpaired and having low numbers a Mann–Whitney U test was used. Statistical analyses were performed using Mann–Whitney test with GraphPad software. Data were considered statistically different if probability values (p) were at least <0.05.

Results

Choroid plexus epithelial cells transport tPA: in vitro and in vivo demonstrations of influx and efflux pathways

The potential transport of tPA through the CPs and its underlying mechanisms were investigated by tracking human recombinant tPA tagged with AlexaFluor⁵⁵⁵ (tPA⁵⁵⁵) or AlexaFluor⁴⁸⁸ (tPA⁴⁸⁸). We first used a model of primary culture of mouse CPECs (based on [30]). After 8 days, cultured CPECs display characteristics identical to those of the CPs in situ (Fig. 1A), namely a cuboid morphology, the expression of the marker transthyretin (TTR) and the presence of tight junctions (occludin

staining). Cultured CPECs were able to uptake extracellular tPA⁵⁵⁵ (40 nM) in a time-dependent process (visible as increasing numbers of intracellular Alexa⁵⁵⁵ punctiform stainings, Fig. 1B). Measures of tPA⁵⁵⁵ levels in protein extracts from cell monolayers resolved by electrophoresis (Fig. 1C) confirmed these observations, with a sharp rise up to 5 min after initiating exposure, and an ongoing increase up to 60 min (after 5 min, the amount of internalized tPA⁵⁵⁵ already corresponded to 41.84% of what was internalized after 60 min). CPECs were also exposed for 15 min to doses of tPA⁵⁵⁵, increasing from 20 to 400 nM. Intracellular fluorescent dots accumulated when increasing doses of tPA⁵⁵⁵ (Fig. 1D). In-gel quantifications confirmed that the uptake of tPA⁵⁵⁵ in CPECs rose with the amount of tPA⁵⁵⁵ applied in the medium (after exposure to 20 nM, the amount of internalized tPA⁵⁵⁵ corresponded to 11.72% of what was internalized with 400 nM) (Fig. 1E). To support these findings, freshly isolated explants of mouse CPs were exposed to tPA⁵⁵⁵ and BSA⁴⁸⁸, used as a control (Bovine Serum Albumin is also a circulating protein, with a molecular weight comparable to that of tPA, as shown on Fig. 2A). CPECs exhibited strong accumulation of tPA⁵⁵⁵, but barely no signal for BSA⁴⁸⁸ (Fig. 2B, C). Inverting fluorophores on our tracked proteins gave similar results (Fig. 2D–F). In addition, we observed that 30 min after their intravenous co-injection (50 µg each), while tPA⁵⁵⁵ was detected in CPECs, Alexa⁴⁸⁸ extravasated out of choroidal vessels, but remained in the stroma without being taken up by CPECs (Additional file 1: Figure S1). Together, these in vitro and ex vivo results show that, CPECs uptake tPA, in a time- and dose-dependent manner, but do not uptake BSA.

Then, mice were injected intravenously with 50 µg of tPA⁵⁵⁵ and 50 µg of BSA⁴⁸⁸, and CSF and brains were harvested 10, 30, 60 or 120 min later (Fig. 3A). In CPs, confocal microscopy (Fig. 3B) revealed dots of tPA⁵⁵⁵ as early as from 10 min, being more numerous at 30 and 60 min, and then virtually absent 120 min after intravenous injection. A z-stack of confocal images clearly shows that dots of tPA⁵⁵⁵ were located inside CPECs (Fig. 3C). We also found that tPA was internalized in clathrin-coated endocytotic vesicles, as it was co-localized with the marker AP2 (Pearson's coefficient of 65%; Additional file 1: Figure

(See figure on next page.)

Fig. 3 CPECs uptake tPA in vivo. **A** Experimental design: mice were injected intravenously with 50 µg of tPA⁵⁵⁵ and BSA⁴⁸⁸, CSF and brains were harvested 10, 30, 60 or 120 min later for protein analysis by electrophoresis and immunohistochemistry, respectively. **B** Confocal photomicrographs of CPs sections (representative of n = 5) with tPA⁵⁵⁵ (magenta), BSA⁴⁸⁸ (green) and TTR (white) staining, scale bar 40 µm and 20 µm in the magnified inserts. **C** Confocal photomicrograph of a CP section (representative of n = 5), tPA⁵⁵⁵ (magenta) and TTR (white) staining, panels show projection over the XZ axis (bottom) and over the YZ axis (right), scale bar 10 µm. **D** Graph shows mean ratio ± SEM (n = 5) of CPECs containing tPA⁵⁵⁵ or BSA⁴⁸⁸ over total CPECs. The magenta curve corresponds to tPA⁵⁵⁵ and the green one to BSA⁴⁸⁸, * significant difference (p < 0.05), \$ significant difference from 0 and 120 min (p = 0.008). **E** Western-Blot for tPA levels in the CSF samples at each time-point. **F** Confocal photomicrographs acquired in the brain parenchyma (representative of n = 5) with tPA⁵⁵⁵ (magenta) and NeuN (white) staining, scale bar 40 µm and 10 µm in the magnified inserts

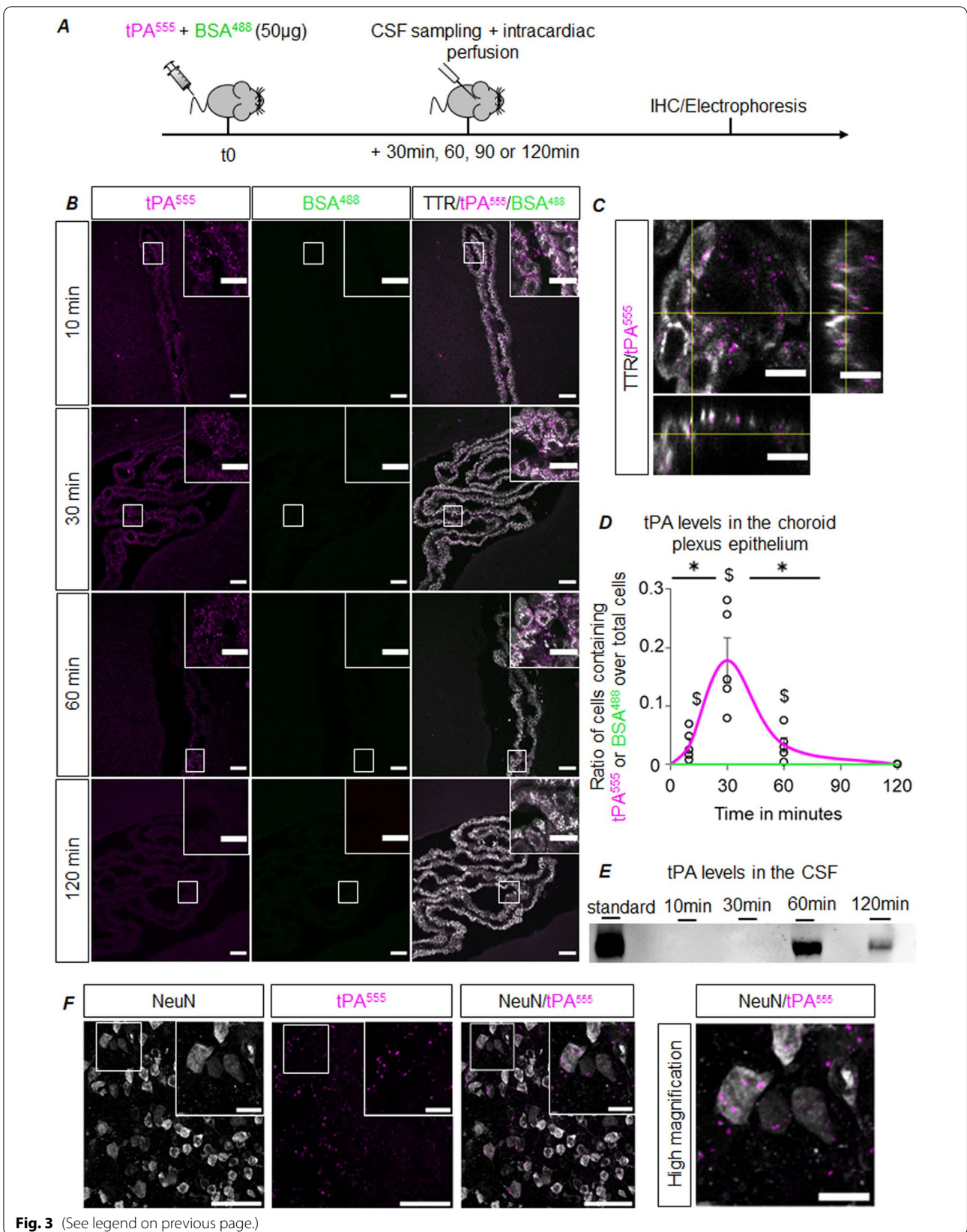


Fig. 3 (See legend on previous page.)

S2). We did not find any BSA⁴⁸⁸ in CPs after intravenous injection. We quantified the number of TTR immune-positive cells with dots of tPA⁵⁵⁵ as an index of the internalization of tPA by CPECs (Fig. 3D). This index followed a bell curve shape, peaking 30 min post-injection. After two hours, tPA was no longer detected in the CPs, suggesting a passage of tPA⁵⁵⁵ from the blood to the CSF. Accordingly, an immunoblot analysis on CSF samples harvested at different time points, revealed the appearance of tPA in the CSF starting between 30 and 60 min post intravenous injection (Fig. 3E). Since the antibody used is specific for human tPA and does not recognize murine tPA, this confirms that vascular tPA crosses the CPs and reaches the CSF. Of note, when administered in the ventricle, tPA⁵⁵⁵ was also detected in the CPECs, suggesting that CPs also allow the clearance of tPA from the CSF (Additional file 1: Figure S3). We also found that after an intravenous injection, the decline in tPA⁵⁵⁵ levels in the blood parallels the increase in tPA⁵⁵⁵ levels in the CSF (Additional file 1: Figure S4). Moreover, to ensure that the observed transport occurs directly from the choroidal circulation to the CPECs, and not via indirect pathways, we administered tPA⁵⁵⁵ in the internal carotid and demonstrated that very shortly after (5 min), dots of tPA⁵⁵⁵ were detected in the stroma and in CPECs (Additional file 1: Figure S5). Importantly, in barrier-protected parenchymal areas, we could detect tPA⁵⁵⁵ in neurons, suggesting that once in the CSF, tPA can enter the parenchyma (Fig. 3F). In barrier-free areas, both tPA⁵⁵⁵ and BSA⁴⁸⁸ reached the brain parenchyma (exemplified here in the median eminence: 30 min after injection, fluorescent BSA and tPA diffused outside the vascular system, Additional file 1: Figure S6).

Overall, these results show that after an intravenous injection, tPA is internalized by CPECs and is then transported to the CSF. This suggests that CPs are a potential route of entry for tPA into the brain parenchyma.

The uptake of tPA by choroid plexus epithelial cells is mediated by LRP1

Transcytosis/uptake of tPA has been attributed in various cell types to members of the LRP family, in particular to LRP1 [3, 4, 14]. A 3D projection of confocal images acquired after intravenous injection of tPA⁵⁵⁵ in mice and coupled to the immunodetection of LRP1 on TTR positive cells supports the hypothesis that LRP1 could be responsible for tPA transport by CPECs. Indeed, we found dots of tPA⁵⁵⁵ close to LRP1 immunolabellings at the basolateral pole of CPECs (Fig. 4A). In cultured CPECs, that also express LRP1 (Fig. 4B), we first found that tPA⁵⁵⁵ internalization was likely an active mechanism. Indeed, when exposed to 40 nM of tPA⁵⁵⁵ for 15 min, CPECs protein extracts displayed fluorescent signals when exposure was performed at 37 °C but not when performed at 4 °C (data not shown). To evaluate the participation of a member of the LRP family, we compared the internalization of tPA by CPECs in the absence or presence of RAP (Receptor Associated Protein, 500 nM), a competitive LRP antagonist (Fig. 4C–D). CPECs co-exposed to tPA⁵⁵⁵ and RAP presented fewer tPA⁵⁵⁵ dots than cells exposed to tPA⁵⁵⁵ alone (Fig. 4C). This result was confirmed by electrophoresis, showing a 41.22% reduction in tPA⁵⁵⁵ internalization induced by RAP co-treatment (Fig. 4D). To evaluate the participation of LRP1 in the uptake of tPA by the CPECs, we knocked-down its expression with a siRNA strategy. The extinction of LRP1 expression was 58.77% effective (Fig. 4E). When compared to control CPECs or CPECs transfected with a scramble siRNA, CPECs transfected with LRP1 siRNA internalized 32.55% less tPA⁵⁵⁵ (Fig. 4F). Importantly, in vivo, we confirmed the role of LRP1 in transporting tPA in CPECs. Indeed, there was around 60% loss of tPA⁵⁵⁵-related fluorescence in CPECs when RAP (90 µg) was co-administered intravenously with tPA⁵⁵⁵ (50 µg), compared to tPA⁵⁵⁵ alone (Fig. 4G–H).

(See figure on next page.)

Fig. 4 Internalization of tPA CPECs is an active process, mediated by LRP1. **A** Representative photomicrographs (n = 5) of CPs harvested from mice intravenously injected with tPA⁵⁵⁵ (tPA⁵⁵⁵ in magenta, LRP1 in yellow, and TTR in white); panels show projection over the XZ axis (bottom) and over the YZ axis (right), scale bar 10 µm. Arrowheads point examples of tPA⁵⁵⁵ dots that can be found close to LRP1 staining in TTR positive cells. a: apical side; b: basal side. **B** Representative photomicrographs (n = 4) of cultured CPECs show LRP1 (yellow) and TTR (white), scale bar 40 µm. **C** Representative photomicrographs (n = 4) of CPECs exposed for 15 min to tPA⁵⁵⁵ (40 nM) alone or with RAP (500 nM), scale bar 40 µm. **D** Representative electrophoresis (representative of n = 4) and corresponding quantification (mean ± SEM, * significant difference (p < 0.05)), of protein extracts from monolayer of CPECs exposed for 15 min to tPA⁵⁵⁵ (40 nM) alone or with RAP (500 nM). **E** Representative western blot against LRP1 and corresponding quantification after transfection of cultured CPECs with nothing (Control), negative control (Scramble) or siRNA anti-LRP1 (siLRP1) (n = 4, mean ± SEM of LRP1 expressed as percentage of control). **F** Representative electrophoresis and corresponding quantification of protein extracts from monolayer of CPECs exposed for 15 min to tPA⁵⁵⁵ (40 nM) after transfection with control, scramble or siLRP1 (n = 4, mean ± SEM of LRP1 expressed as percentage of control). **G–H** Mice were injected intravenously with 50 µg of tPA⁵⁵⁵ alone or together with 90 µg of RAP. 30 min later, CPs were freshly isolated for immunohistochemistry. **G** Representative confocal photomicrographs (n = 4) of a stack of CPs explants, with tPA⁵⁵⁵ (magenta), TTR (white) and DAPI (blue) staining. **H** Quantifications of tPA⁵⁵⁵ fluorescence intensity in CPs explants. Scale bar 50 µm and 10 µm in the magnified inserts

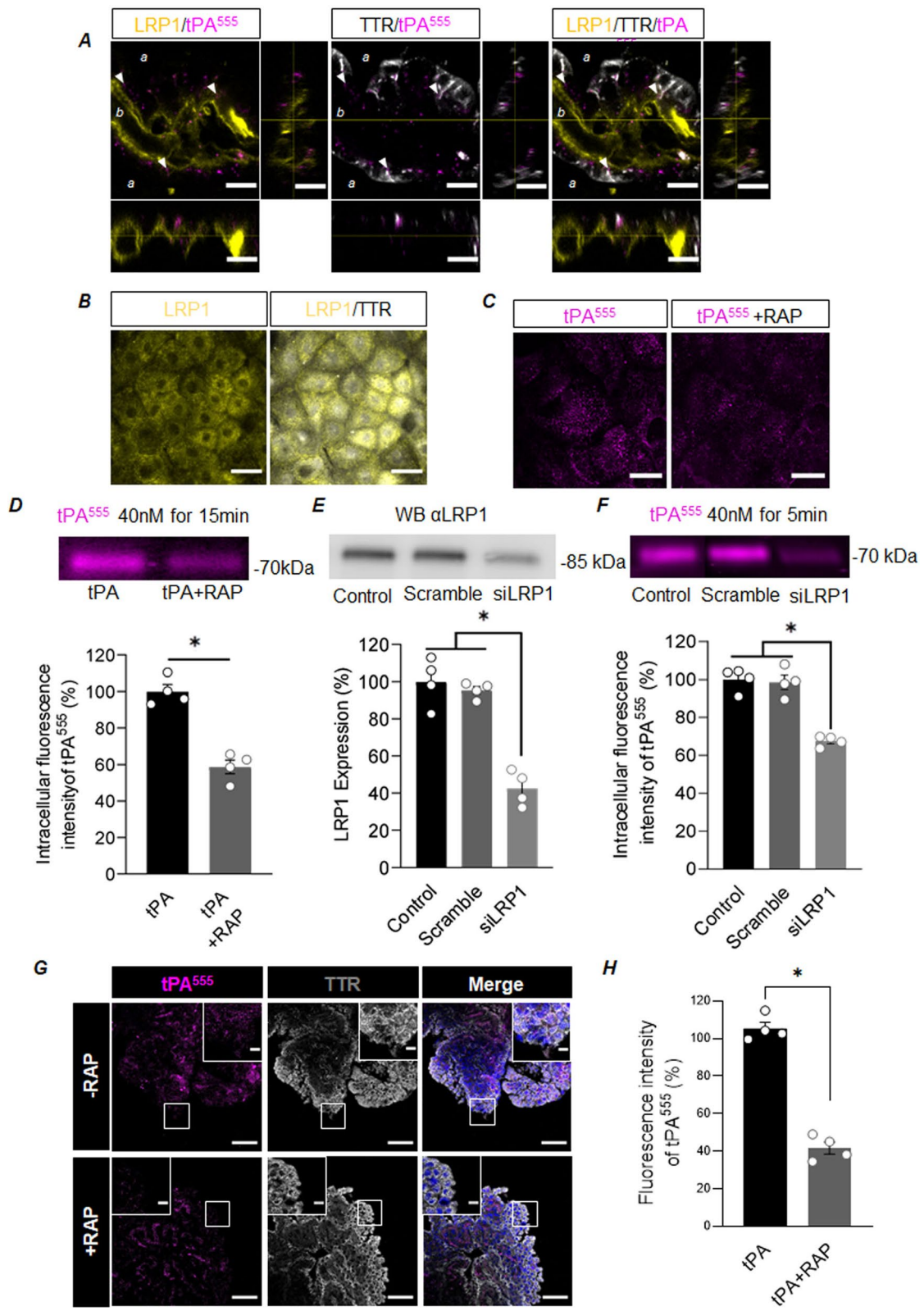


Fig. 4 (See legend on previous page.)

The finger domain of tPA is critical for the passage of tPA across choroid plexus epithelial cells

Among its five functional domains (Fig. 5A), the finger domain of tPA is known to be the one interacting with LRP1. To assess its involvement in the passage of CPECs, we produced a tPA devoid of its finger domain (ΔF -tPA), and alternatively, we grafted the finger domain of tPA to albumin (F-BSA) (Fig. 5E). Both mutant proteins were also tagged with an Alexa Fluor for their tracking (Fig. 5B, F). *Ex-vivo*, CP explants were exposed to 40 nM of tPA⁵⁵⁵ and with increasing doses of ΔF -tPA⁴⁸⁸ (40 nM, 200 nM or 400 nM) for 15 min (Fig. 5C, D). As expected, tPA⁵⁵⁵ was internalized by CPECs whereas ΔF -tPA was not, even with a tenfold higher concentration. The finger domain of tPA is therefore necessary for internalization by CPECs. Interestingly, fusing the finger domain of tPA to BSA conferred the new ability to BSA to be internalized by CPECs *ex vivo* (Fig. 5G, H).

These *ex vivo* observations were confirmed *in vivo*, in mice injected intravenously with 50 μ g of tPA⁵⁵⁵/ ΔF -tPA⁴⁸⁸ or with 50 μ g of F-BSA⁵⁵⁵/BSA⁴⁸⁸ (Fig. 6A). A confocal microscopy analysis (Fig. 6B) revealed dots of tPA⁵⁵⁵ in TTR positive cells, 30 and 60 min after injection. However, virtually no dots were detected for ΔF -tPA⁴⁸⁸. We quantified the number of TTR immune-positive cells with dots of tPA⁵⁵⁵ and dots of ΔF -tPA⁴⁸⁸ as an index of their internalization by CPECs (Fig. 6C). This index was null for ΔF -tPA⁴⁸⁸ and peaked 30 min post-injection of tPA⁵⁵⁵, with 73.09% more cells containing tPA⁵⁵⁵ than at 60 min. Interestingly, the confocal microscopy analysis (Fig. 6D) revealed dots of F-BSA⁵⁵⁵ in TTR positive cells, 30 and 60 min after IV injection, while no dots were detected for BSA⁴⁸⁸. The corresponding quantification confirmed that BSA *per se*, cannot be uptaken by CPECs, but that grafting the finger domain of tPA then allows the internalization of the fusion protein (Fig. 6E). This index followed a bell curve shape, with a peak of internalization of tPA⁵⁵⁵ reached 30 min post-injection, with 56.84% more cells containing tPA⁵⁵⁵, than at 60 min and no detection of ΔF -tPA⁴⁸⁸. Also important, as confirmed by electrophoresis of corresponding CSF samples, F-BSA⁵⁵⁵ can cross the BCSFB, like tPA⁵⁵⁵ (Fig. 6F, G). The finger domain of tPA is thus an interesting strategy to allow therapeutic fusion proteins reaching the CSF and the brain parenchyma.

Discussion

Besides ensuring the adequate cerebral perfusion, circulating tPA controls brain physiopathology, at least by a direct action on the neurovascular unit. Here, we show that in addition to the BBB [3], the BCSFB is also a door to the brain for circulating tPA. Thus, together with endothelial and parenchymal cells that produce tPA, both the BBB and the BCSFB contribute to modulate the levels of tPA in the different compartments of the brain.

When considering inward flux to the brain, CPs have two interesting features: the presence of fenestrations between choroidal endothelial cells and a rich vascular density. Vascular peptides/proteins (even of several hundred kDa) can cross the highly permeable choroidal endothelium via either fenestrae or vesicular shuttling. When reaching the CPEC basement membrane, some peptides/proteins might enter the CSF via paracellular convection and diffusion through apical tight junctions, while other could undergo transcytosis by pinocytosis, or via a specific receptor-mediated process, including the transferrin receptor, the insulin receptor or members of the low-density lipoprotein (LDL) receptor family. Here, we identified LRP1 of CPEC as a mediator of the transport of tPA from the blood to the CSF.

The lack of polarity of cultured CPECs and the fact that tPA exposure on explants occurs at both sides, do not allow distinguishing influx and efflux processes. *In vivo*, we demonstrate that both influx and efflux of tPA through the CPs exist. A β , has also been shown to be transported and/or taken up by CPs when present either at the apical or basal side, with a preferred CSF-to-blood direction [16]. Thus a single molecule can be internalized and/or transported from both CSF and blood, not only depending on its gradient of concentration, but also on energy dependent systems. The relative efficacy of influx versus efflux transport, which may vary depending on tPA levels circulating in blood and CSF would deserve additional investigation. The relative delay of detection of tPA in the CSF after intravenous administration may suggest that it could come from alternative routes. But since tPA can be found in the stroma and in CPECs very early after delivery through the carotid artery, the CP is undoubtedly an interface allowing the transport of tPA from the blood to the CSF.

(See figure on next page.)

Fig. 5 The Finger domain of tPA allows the internalization of tPA and BSA by CPECs *ex vivo*. **A** Schematic representation of the functional domains of tPA and its mutant form ΔF -tPA, deleted of the finger domain. **B** Electrophoresis of 5 μ g of tPA⁵⁵⁵ (magenta) and ΔF tPA⁴⁸⁸ (green) in SDS-PAGE and revelation in fluorescence. **C–D** Representative photomicrographs and corresponding quantifications of CPs explants exposed to tPA⁵⁵⁵ (40 nM) and ΔF -tPA⁴⁸⁸ (40 nM, 200 nM or 400 nM) for 15 min (n = 4, mean \pm SEM). **E** Schematic representation of BSA and its mutant form F-BSA, adding the finger domain of tPA. **F** Electrophoresis of 5 μ g of BSA⁴⁸⁸ (green) and F-BSA⁵⁵⁵ (magenta) in SDS-PAGE and revelation in fluorescence. **G, H** Representative photomicrographs and corresponding quantifications of CPs explants exposed to BSA⁴⁸⁸ (40 nM) and F-BSA⁵⁵⁵ (40 nM) for 15 min (n = 4, mean \pm SEM). TTR staining (white) is shown on the merged images (**C** and **F**). Scale bar: 40 μ m

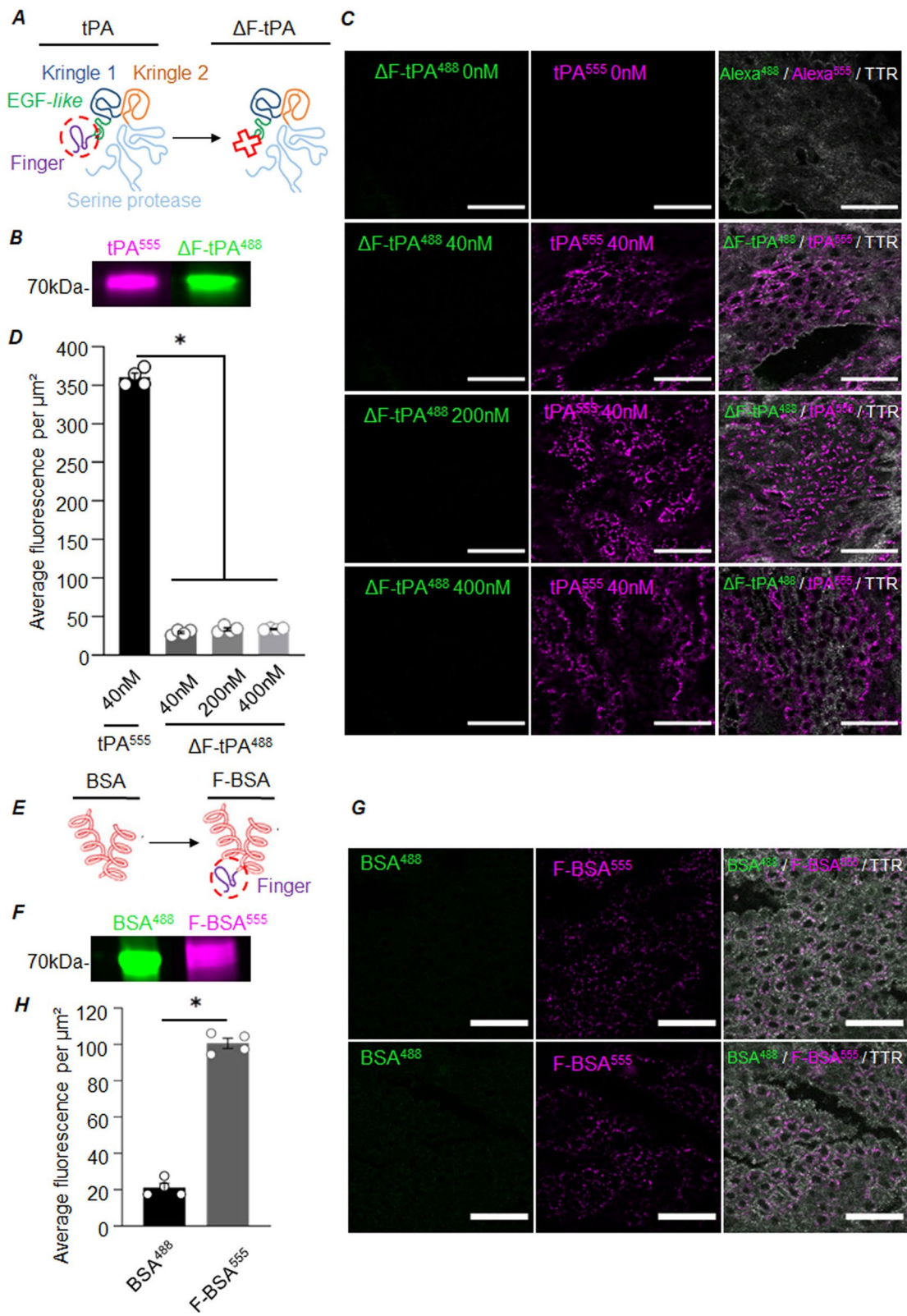


Fig. 5 (See legend on previous page.)

Several members of the LDL receptor family have been identified in the CPs, including the LDL receptor (LDLR), LRP1, LRP2 (megalin/gp 330, although probably at low levels [8], and LRP8/ApoE receptor 2 [41]. None of these has been investigated in relationship with tPA transport in the CPs. Instead, they have received more attention in the context of Alzheimer's disease, in particular LRP1 and LRP2 of which A β , like tPA, is a ligand. In this context, age and/or disease-related alterations in LRP1 and LRP2 levels could reduce the efflux of A β and concur to the pathogenesis of Alzheimer's disease [11, 27, 40]. Together with PgP, LRP1 is believed to drive the efflux of A β from the CSF to the blood while LRP2 would drive the influx of A β , together with RAGE. This would imply that LRP1 is expressed at the apical side and LRP2 at the basolateral side of CPECs, which would not be compatible with our findings of an influx of tPA mediated by LRP1. In fact, the literature about the subcellular localization of LRP on CPECs is inconsistent [7, 11, 39, 47]. In our hands, in vivo immunostainings for LRP1 were stronger at the basal/basolateral sides. Thus, our findings support the hypothesis of a LRP1-dependent influx of tPA, while the efflux may be LRP-1 independent. Altogether, without excluding other mechanisms, our data show that the LRP-1 driven uptake is an important pathway of transport of vascular tPA in CPECs.

Together, the BBB and BCSFB prevent the parenchymal passage of all but a fraction of small uncharged molecules. Accordingly, parenteral delivery results in low levels of drugs in the CNS, which likely limits their efficacy. Interestingly, low energy shockwave pulse has recently been shown to increase the permeation of the BCSFB to some molecules [24]. Alternative routes of administration including direct delivery into the CSF (intrathecal administration) or into the parenchyma (convection-enhanced delivery) might overcome this limit of parenteral delivery, but are invasive and risky (for review see [15]). Receptor-mediated transcytosis may be another promising mechanism to deliver protein through CNS barriers. For instance, molecular trojan based on the fusion of therapeutic protein motifs to antibodies

against the transferrin receptor or the insulin receptor allow brain delivery of otherwise non-transportable proteins [23]. The present study adds to these approaches and opens interesting prospects. We show that vascular tPA can cross the BCSFB via LRP1-mediated transcytosis, as demonstrated earlier at the BBB level [3] and [4]. Together, both the BBB and BCSFB pathways may allow tPA accessing neurons to modulate their activity. We also determine that among its five functional domains, the finger domain of tPA is mandatory for the transport of tPA across the CPs. Depending on the context, it could be interesting to open, or conversely, to close these two roads to the brain for circulating tPA. For instance, in vasculo-occlusive conditions, engineering a tPA deleted of its finger domain could increase its availability in the blood, together with limited side-effects on the neurovascular unit. On the other hand, some conditions likely require the presence of tPA in the CSF. For instance, reduced tPA CSF levels in AD patients (versus patients with subjective or mild cognitive impairment) have been suggested to contribute to some neurodegenerative pathways of the disease [19]. Restoring tPA levels in the CSF via vascular delivery might counteract this.

Another interesting finding is that while albumin is not normally transported through the CPECs, fusion to the finger domain of tPA this time allowed passage from the blood to the CSF via CPECs. Further studies should explore the actual therapeutic efficacy of such a strategy on protein molecules with known protective actions on brain cells, but unable to reach their target after iv injection.

Conclusions

To summarize, our study shows that the choroid plexus is a door to the brain for vascular tPA. By dissecting the molecular determinants of the passage of tPA across the choroidal epithelium, we uncover opportunities to modulate exchanges from the blood to the central nervous system.

(See figure on next page.)

Fig. 6 The Finger domain of tPA allows the transport of tPA and BSA across the BCSFB barrier in vivo. **A** Experimental design: mice were injected intravenously with 50 μ g of tPA⁵⁵⁵/ Δ F-tPA⁴⁸⁸ or F-BSA⁵⁵⁵/BSA⁴⁸⁸, CSF and brains were harvested 30 or 60 min later for protein analysis by electrophoresis and immunohistochemistry, respectively. **B–C**, Representative confocal photomicrographs and corresponding quantification (mean ratio of CPECs containing tPA⁵⁵⁵ or Δ F-tPA⁴⁸⁸ over total CPECs \pm SEM, n = 5) of CPs sections with tPA⁵⁵⁵ (magenta), Δ F-tPA⁴⁸⁸ (green) and TTR (white) staining; scale bar 40 μ m and 20 μ m in the magnified inserts. * significant difference ($p < 0.05$), \$ significant difference from 0 min ($p = 0.0022$). **D–E** Representative confocal photomicrographs and corresponding quantification (mean ratio of CPECs containing tPA⁵⁵⁵ or Δ F-tPA⁴⁸⁸ over total CPECs \pm SEM, n = 5) of CPs sections with F-BSA⁵⁵⁵ (magenta), BSA⁴⁸⁸ (green) and TTR (white) staining; scale bar 40 μ m and 20 μ m in the magnified inserts. * significant difference ($p < 0.05$), \$ significant difference from 0 min ($p = 0.0079$). **F–G**, Representative electrophoresis and corresponding quantification for tPA⁵⁵⁵ and F-BSA⁵⁵⁵ levels in CSF samples at 30 and 60 min (mean \pm SEM, n = 4)

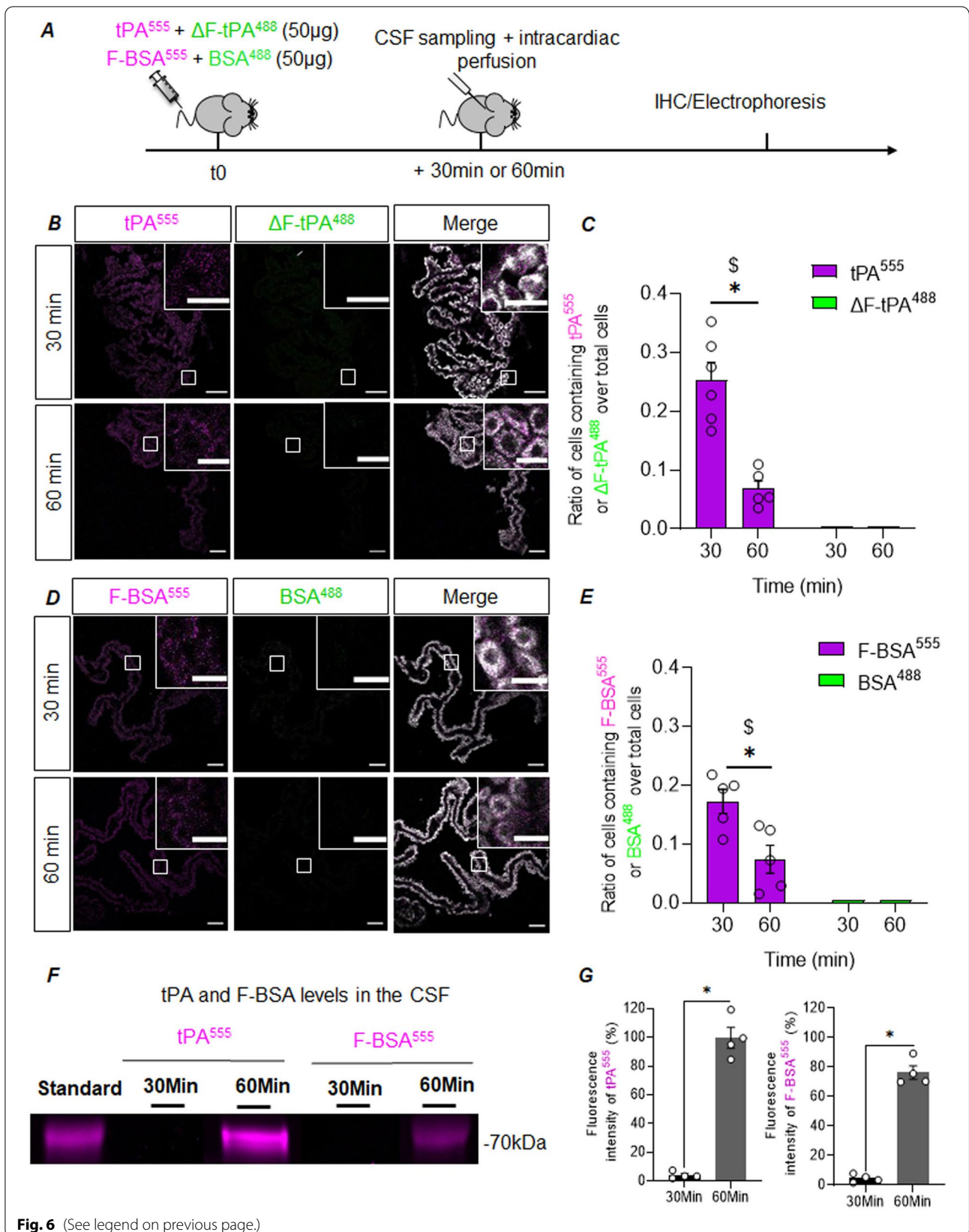


Fig. 6 (See legend on previous page.)

Abbreviations

BBB: Blood–brain-barrier; CSF: Cerebrospinal fluid; BCSFB: Blood–CSF-barrier; CPs: Choroid plexuses; CPECs: Choroid plexus epithelial cells; LRP: Low density lipoprotein receptor-related protein; tPA: Tissue-type plasminogen activator; TTR: Transthyretin.

Supplementary Information

The online version contains supplementary material available at <https://doi.org/10.1186/s12987-022-00378-0>.

Additional file 1: Figure S1. In contrast to tPA coupled to Alexa, Alexa alone is not taken-up by CPECs *in vivo*. **A**, Experimental design: mice were injected intravenously with tPA⁵⁵⁵ and Alexa⁴⁸⁸ (50µg each), brains were harvested 30min later for immunohistochemistry. **B**, Representative confocal photomicrographs (n=4) of CPs sections with tPA⁵⁵⁵ (magenta), Alexa⁴⁸⁸ (green) and DAPI (blue) staining; scale bar 50µm (upper panels) and 10µm in the magnified inserts (lower panels). **Figure S2.** CPECs internalized tPA by clathrin-coated endocytosis vesicles. **A**, Confocal photomicrographs (representative of n=6 slices) of CPs sections with tPA⁵⁵⁵ (left bottom, magenta), TTR (left top, white) and AP2 (right top, green) staining; scale bar 50µm and 10µm in the magnified inserts. **B**, Image analysis of confocal photomicrographs using the Imaris Microscopy Image Analysis Software to study the colocalization between tPA⁵⁵⁵ and AP2 staining (yellow, right). tPA endocytosis (white arrow); scale bar 10µm. **Figure S3.** Existence of an efflux pathway for tPA. **A**, Experimental design: mice received an intra-cerebroventricular injection of tPA⁵⁵⁵ (1µl at 0.9mg/ml), and brains were harvested 10, 30 or 60min later for immunohistochemistry. **B**, Representative confocal photomicrographs (n=4) of CPs sections with tPA⁵⁵⁵ (magenta), LRP1 (green), TTR (white) and DAPI (blue) staining; scale bar 50µm and 10µm in the magnified inserts. **Figure S4.** Evolution of tPA⁵⁵⁵ levels in the blood and CSF. **A**, Experimental design illustrating that mice were injected intravenously with 50µg of tPA⁵⁵⁵ and BSA⁴⁸⁸, CSF, blood and brains were harvested 15, 30, or 45min later for protein analysis by electrophoresis (2µl of CSF and 1µl of plasma were resolved for each animal). **B**, Representative electrophoreses and **C**, corresponding quantification for tPA⁵⁵⁵ levels in the plasma and in the CSF (mean ± SEM, n=5). ** significant difference (p<0.005). **Figure S5:** tPA⁵⁵⁵ is rapidly taken-up by CPECs after intra-carotid injection. **A**, Experimental design: mice were injected in the carotid with 50µg of tPA⁵⁵⁵, brains were harvested 5min later, and PCs freshly isolated for immunohistochemistry. **B, C, D**, Representative confocal photomicrographs (n=5) of a stack of CPs explants with tPA⁵⁵⁵ (magenta) and DAPI staining (blue), focus on PCs vasculature (**B**), on PCs stroma (**C**) and on CPECs (**D**). Scale bar 50µm and 10µm in the magnified inserts. **Figure S6.** Confocal photomicrograph shows tPA⁵⁵⁵ (magenta) and BSA⁴⁸⁸ (green) extravasation out of vessels (CD31 staining in white), in the Median Eminence, a barrier free zone; DAPI staining (blue), scale bar 40µm

Acknowledgements

We are grateful to Dr. Benoit Roussel for his technical advices.

Author contributions

CA, DV, SML, MG and VZ conceptualized the study. LL and YH produced the recombinant proteins. VZ, JF, MB and MR performed the experiments, performed data acquisition and analysis. CA, JF and VZ wrote the manuscript. CA and DV supervised the project and secured funding. All authors read and approved the final manuscript.

Funding

This work was funded by the Institut National de la Santé Et de la Recherche Médicale, Caen Normandy University and the Regional Council of Normandy.

Availability of data and materials

The datasets analyzed during the current study are available from the corresponding author on request.

Declarations

Ethics approval and consent to participate

All experiments were approved by the Ethical Committee and received authorization #11043 from the Ministry of Higher Education, Research and Innovation. The experiments were performed with respect for animal welfare and in accordance with French (decree 87/848) and European (2010/63/EU) regulations.

Consent for publication

Does not apply.

Competing interests

The authors declare that they have no competing interests.

Author details

¹Physiopathology and Imaging of Neurological Disorders, Normandie Univ, UNICAEN, INSERM, INSERM UMR-S U1237, Institut Blood and Brain @ Caen-Normandie, GIP Cycleron, Boulevard Becquerel, 14074 Caen, France. ²Department of Clinical Research, Caen-Normandie Hospital (CHU), Caen, France.

Received: 23 March 2022 Accepted: 10 October 2022

Published online: 15 October 2022

References

- Anfray A, Drieu A, Hingot V, Hommet Y, Yetim M, Rubio M, Deffieux T, Tanter M, Orset C, Vivien D. Circulating tPA contributes to neurovascular coupling by a mechanism involving the endothelial NMDA receptors. *J Cereb Blood Flow Metab.* 2020;40(10):2038–54. <https://doi.org/10.1177/0271678X19883599>.
- Arnaud K, Moreira VO, Vincent J, Dallerac G, Dubreuil C, Dupont E, Richter M, Müller UC, Rondi-Reig L, Prochiantz A, Di Nardo AA. Choroid plexus APP regulates adult brain proliferation and animal behavior. *Life Science Alliance.* 2021. <https://doi.org/10.26508/lsa.202000703>.
- Benchenane K, Berezowski V, Ali C, Fernández-Monreal M, López-Atalaya JP, Brillault J, Chuquet J, Nouvelot A, MacKenzie ET, Bu G, Cecchelli R, Touzani O, Vivien D. Tissue-type plasminogen activator crosses the intact blood-brain barrier by low-density lipoprotein receptor-related protein-mediated transcytosis. *Circulation.* 2005;111(17):2241–9. <https://doi.org/10.1161/01.CIR.0000163542.48611.A2>.
- Benchenane K, Berezowski V, Fernández-Monreal M, Brillault J, Valable S, Dehouck M-P, Cecchelli R, Vivien D, Touzani O, Ali C. Oxygen glucose deprivation switches the transport of tPA across the blood-brain barrier from an LRP-dependent to an increased LRP-independent process. *Stroke.* 2005;36(5):1059–64. <https://doi.org/10.1161/01.STR.0000163050.39122.4f>.
- Bors L, Tóth K, Tóth EZ, Bajza Á, Csorba A, Sziget K, Máthé D, Perlaki G, Orsi G, Tóth GK, Erdő F. Age-dependent changes at the blood-brain barrier. A Comparative structural and functional study in young adult and middle aged rats. *Brain Res Bull.* 2018;139:269–77. <https://doi.org/10.1016/j.brainresbull.2018.03.001>.
- Bryniarski MA, Ren T, Rizvi AR, Snyder AM, Morris ME. Targeting the choroid plexuses for protein drug delivery. *Pharmaceutics.* 2020;12(10):963. <https://doi.org/10.3390/pharmaceutics12100963>.
- Carro E, Spuch C, Trejo JL, Antequera D, Torres-Aleman I. Choroid plexus megalin is involved in neuroprotection by serum insulin-like growth factor I. *J Neurosci.* 2005;25(47):10884–93. <https://doi.org/10.1523/JNEUROSCI.2909-05.2005>.
- Chun JT, Wang L, Pasinetti GM, Finch CE, Zlokovic BV. Glycoprotein 330/Megalyn (LRP-2) has low prevalence as mRNA and protein in brain microvessels and choroid plexus. *Exp Neurol.* 1999;157(1):194–201. <https://doi.org/10.1006/exnr.1999.7052>.
- Coisne C, Engelhardt B. Tight junctions in brain barriers during central nervous system inflammation. *Antioxid Redox Signal.* 2011;15(5):1285–303. <https://doi.org/10.1089/ars.2011.3929>.
- Collen D, Lu HR, Lijnen HR, Nelles L, Stassen JM. Thrombolytic and pharmacokinetic properties of chimeric tissue-type and urokinase-type

- plasminogen activators. *Circulation*. 1991;84(3):1216–34. <https://doi.org/10.1161/01.CIR.84.3.1216>.
11. Crissey P, Miller MC, Chiu C, Boylan M, Caralopoulos IN, Gonzalez L, Johanson CE, Silverberg GD. Amyloid-beta transporter expression at the blood-CSF barrier is age-dependent. *Fluids Barriers CNS*. 2011;8(1):21. <https://doi.org/10.1186/2045-8118-8-21>.
 12. Dandy WE, Blackfan KD. Internal hydrocephalus. *J Neurosurg*. 1919;21(7):588–635. <https://doi.org/10.3171/jns.1964.21.7.0588>.
 13. Engelhardt B, Sorokin L. The blood-brain and the blood-cerebrospinal fluid barriers: function and dysfunction. *Semin Immunopathol*. 2009;31(4):497–511. <https://doi.org/10.1007/s00281-009-0177-0>.
 14. Fernández-Monreal M, López-Atalaya JP, Benchenane K, Léveillé F, Cacquevel M, Plawinski L, MacKenzie ET, Bu G, Buisson A, Vivien D. Is tissue-type plasminogen activator a neuromodulator? *Mol Cell Neurosci*. 2004;25(4):594–601. <https://doi.org/10.1016/j.mcn.2003.11.002>.
 15. Fowler M, Cotter J, Knight B, Sevick-Muraca E, Sandberg D, Sirianni R. Intrathecal drug delivery in the era of Nanomedicine M. *Physiol Behav*. 2020. <https://doi.org/10.1016/j.addr.2020.02.006>. *Intrathecal*.
 16. Fujiyoshi M, Tachikawa M, Ohtsuki S, Ito S, Uchida Y, Akanuma S, Kamiie J, Hashimoto T, Hosoya K, Iwatsubo T, Terasaki T. Amyloid- β peptide(1–40) elimination from cerebrospinal fluid involves low-density lipoprotein receptor-related protein 1 at the blood-cerebrospinal fluid barrier. *J Neurochem*. 2011;118(3):407–15. <https://doi.org/10.1111/j.1471-4159.2011.07311.x>.
 17. Ghersi-Egea J-F, Strazielle N, Catala M, Silva-Vargas V, Doetsch F, Engelhardt B. Molecular anatomy and functions of the choroidal blood-cerebrospinal fluid barrier in health and disease. *Acta Neuropathol*. 2018;135(3):337–61. <https://doi.org/10.1007/s00401-018-1807-1>.
 18. Hacke W, Lyden P, Emberson J, Baigent C, Blackwell L, Albers G, Bluhmki E, Brott T, Cohen G, Davis SM, Donnan GA, Grotta JC, Howard G, Kaste M, Koga M, von Kummer R, Lansberg MG, Lindley RJ, Olivet J-M, Lees KR. Effects of alteplase for acute stroke according to criteria defining the European Union and United States marketing authorizations: Individual-patient-data meta-analysis of randomized trials. *Int J Stroke*. 2018;13(2):175–89. <https://doi.org/10.1177/1747493017744464>.
 19. Hanzel CE, Iulita MF, Eyojlofsdottir H, Hjorth E, Schultzberg M, Eriksdotter M, Cuello AC. Analysis of matrix metallo-proteases and the plasminogen system in mild cognitive impairment and Alzheimer's disease cerebrospinal fluid. *J Alzheimer's Dis*. 2014;40(3):667–78. <https://doi.org/10.3233/JAD-132282>.
 20. Huber JD, Egleton RD, Davis TP. Molecular physiology and pathophysiology of tight junctions in the blood-brain barrier. *Trends Neurosci*. 2001;24(12):719–25. [https://doi.org/10.1016/S0166-2236\(00\)02004-X](https://doi.org/10.1016/S0166-2236(00)02004-X).
 21. Izcovich A, Criniti JM, Popoff F, Lu L, Wu J, Ageno W, Witt DM, Jaff MR, Schulman S, Manja V, Verhamme P, Rada G, Zhang Y, Nieuwlaat R, Wiercioch W, Schönemann HJ, Neumann I. Thrombolytics for venous thromboembolic events: a systematic review with meta-analysis. *Blood Adv*. 2020;4(7):1539–53. <https://doi.org/10.1182/bloodadvances.202001513>.
 22. Kaur C, Rathnasamy G, Ling E-A. The choroid plexus in healthy and diseased brain. *J Neuropathol Exp Neurol*. 2016;75(3):198–213. <https://doi.org/10.1093/jnen/nlv030>.
 23. Kouhi A, Pachipulusu V, Kapenstein T, Hu P, Epstein AL, Khawli LA. Brain disposition of antibody-based therapeutics: dogma, approaches and perspectives. *Int J Mol Sci*. 2021;22(12):6442. <https://doi.org/10.3390/ijms22126442>.
 24. Kung Y, Chen KY, Liao WH, Hsu YH, Wu CH, Hsiao MY, Huang APH, Chen WS. Facilitating drug delivery in the central nervous system by opening the blood-cerebrospinal fluid barrier with a single low energy shockwave pulse. *Fluids Barriers CNS*. 2022;19(1):1–13. <https://doi.org/10.1186/s12987-021-00303-x>.
 25. Lazarevic I, Engelhardt B. Modeling immune functions of the mouse blood-cerebrospinal fluid barrier in vitro: primary rather than immortalized mouse choroid plexus epithelial cells are suited to study immune cell migration across this brain barrier. *Fluids Barriers CNS*. 2015;13(1):2. <https://doi.org/10.1186/s12987-016-0027-0>.
 26. Levin EG, Santell L, Osborn KG. The expression of endothelial tissue plasminogen activator in vivo: a function defined by vessel size and anatomic location. *J Cell Sci*. 1997;110(2):139–48. <https://doi.org/10.1242/jcs.110.2.139>.
 27. Liu CB, Wang R, Dong MW, Gao XR, Yu F. Amyloid-beta transporter expression at the choroid plexus in normal aging: the possibility of reduced resistance to oxidative stress insults. *Sheng Li Xue Bao : Acta Physiologica Sinica*. 2014;66(2):158–68. <https://doi.org/10.13294/j.aps.2014.0019>.
 28. Llovera G, Benakis C, Enzmann G, Cai R, Arzberger T, Ghasemigharagoz A, Mao X, Malik R, Lazarevic I, Liebscher S, Ertürk A, Meissner L, Vivien D, Hafner C, Plesnila N, Montaner J, Engelhardt B, Liesz A. The choroid plexus is a key cerebral invasion route for T cells after stroke. *Acta Neuropathol*. 2017;134(6):851–68. <https://doi.org/10.1007/s00401-017-1758-y>.
 29. Macrez R, Ortega MC, Bardou I, Mehra A, Fournier A, Van Der Pol SMA, Haelewyn B, Maubert E, Lesept F, Chevilly A, De Castro F, De Vries HE, Vivien D, Clemente D, Docagne F. Neuroendothelial NMDA receptors as therapeutic targets in experimental autoimmune encephalomyelitis. *Brain*. 2016;139(9):2406–19. <https://doi.org/10.1093/brain/aww172>.
 30. Monnot AD, Zheng W. Culture of choroid plexus epithelial cells and in vitro model of blood-CSF barrier. *Method Mol Biol*. 2013;945(3):13–29. https://doi.org/10.1007/978-1-62703-125-7_2.
 31. Moorea SA, Oglesbee MJ. Involvement of the choroid plexus in the inflammatory response after acute spinal cord injury in dogs: an immunohistochemical study. *Vet Immunol Immunopathol*. 2012;148:348–52. <https://doi.org/10.1016/j.vetimm.2012.07.001>. *Involvement*.
 32. Nicole O, Docagne F, Ali C, Margail I, Carmeliet P, MacKenzie ET, Vivien D, Buisson A. The proteolytic activity of tissue-plasminogen activator enhances NMDA receptor-mediated signaling. *Nat Med*. 2001;7(1):59–64. <https://doi.org/10.1038/83358>.
 33. Nishihara H, Soldati S, Mossu A, Rosito M, Rudolph H, Muller WA, Latorre D, Sallusto F, Sospedra M, Martin R, Ishikawa H, Tenenbaum T, Schroten H, Gosselet F, Engelhardt B. Human CD4+ T cell subsets differ in their abilities to cross endothelial and epithelial brain barriers in vitro. *Fluids Barriers CNS*. 2020;17(1):1–18. <https://doi.org/10.1186/s12987-019-0165-2>.
 34. Planques A, Oliveira Moreira V, Dubreuil C, Prochiantz A, Di Nardo AA. OTX2 Signals from the choroid plexus to regulate adult neurogenesis. *Eneuro*. 2019. <https://doi.org/10.1523/ENEURO.0262-18.2019>.
 35. Shechter R, Miller O, Yovel G, Rosenzweig N, London A, Julia R, Kim K-W, Klein E, Kalchenko V, Bendel P, Lira SA, Jung S, Schwartz M. Recruitment of beneficial M2 macrophages to injured spinal cord is orchestrated by remote brain choroid plexus. *Immunity*. 2013;38(3):555–69. <https://doi.org/10.1016/j.immuni.2013.02.012>. *Recruitment*.
 36. Shipley FB, Dani N, Xu H, Deister C, Cui J, Head JP, Sadegh C, Fame RM, Shannon ML, Flores VI, Kishkovich T, Jang E, Klein EM, Goldey GJ, He K, Zhang Y, Holtzman MJ, Kirchhausen T, Wyart C, Lehtinen MK. Tracking calcium dynamics and immune surveillance at the choroid plexus blood-cerebrospinal fluid interface. *Neuron*. 2020;108(4):623–39. <https://doi.org/10.1016/j.neuron.2020.08.024>. *Tracking*.
 37. Solár P, Zamani A, Kubičková L, Dubový P, Joukal M. Choroid plexus and the blood-cerebrospinal fluid barrier in disease. *Fluids Barriers CNS*. 2020;17(1):35. <https://doi.org/10.1186/s12987-020-00196-2>.
 38. Spector R, Keep RF, Robert Snodgrass S, Smith QR, Johanson CE. A balanced view of choroid plexus structure and function: focus on adult humans. *Exp Neurol*. 2015;267:78–86. <https://doi.org/10.1016/j.expneurol.2015.02.032>.
 39. Stockinger W, Hengstschläger-Ottndad E, Novak S, Matus A, Hüttinger M, Bauer J, Lassmann H, Schneider WJ, Nimpf J. The low density lipoprotein receptor gene family. *J Biol Chem*. 1998;273(48):32213–21. <https://doi.org/10.1074/jbc.273.48.32213>.
 40. Stopa EG, Tanis KQ, Miller MC, Nikonova EV, Podtelezchnikov AA, Finney EM, Stone DJ, Camargo LM, Parker L, Verma A, Baird A, Donahue JE, Torabi T, Eliceiri BP, Silverberg GD, Johanson CE. Comparative transcriptomics of choroid plexus in Alzheimer's disease, frontotemporal dementia and Huntington's disease: implications for CSF homeostasis. *Fluids Barriers CNS*. 2018;15(1):18. <https://doi.org/10.1186/s12987-018-0102-9>.
 41. Strazielle N, Ghersi-Egea J-F. Potential pathways for CNS drug delivery across the blood-cerebrospinal fluid barrier. *Curr Pharm Des*. 2016;22(35):5463–76. <https://doi.org/10.2174/1381612822666160726112115>.
 42. Thiebaut AM, Gauberti M, Ali C, Martinez De Lizarrondo S, Vivien D, Yepes M, Roussel BD. The role of plasminogen activators in stroke treatment: fibrinolysis and beyond. *Lancet Neurol*. 2018;17(12):1121–32. [https://doi.org/10.1016/S1474-4422\(18\)30323-5](https://doi.org/10.1016/S1474-4422(18)30323-5).

43. Tietz S, Engelhardt B. Brain barriers: crosstalk between complex tight junctions and adherens junctions. *J Cell Biol.* 2015;209(4):493–506. <https://doi.org/10.1083/jcb.201412147>.
44. Vercellino M, Votta B, Condello C, Piacentino C, Romagnolo A, Merola A, Capello E, Mancardi GL, Mutani R, Giordana MT, Cavalla P. Involvement of the choroid plexus in multiple sclerosis autoimmune inflammation: a neuropathological study. *J Neuroimmunol.* 2008;199(1–2):133–41. <https://doi.org/10.1016/j.jneuroim.2008.04.035>.
45. Wardlaw JM, Murray V, Berge E, del Zoppo G, Sandercock P, Lindley RL, Cohen G. Recombinant tissue plasminogen activator for acute ischaemic stroke: an updated systematic review and meta-analysis. *Lancet.* 2012;379(9834):2364–72. [https://doi.org/10.1016/S0140-6736\(12\)60738-7](https://doi.org/10.1016/S0140-6736(12)60738-7).
46. Xiang J, Routhe LJ, Andrew Wilkinson D, Hua Y, Moos T, Xi G, Keep RF. The choroid plexus as a site of damage in hemorrhagic and ischemic stroke and its role in responding to injury. *Fluids Barriers CNS.* 2017;14(1):1–13. <https://doi.org/10.1186/s12987-017-0056-3>.
47. Zheng G, Bachinsky DR, Stamenkovic I, Strickland DK, Brown D, Andres G, McCluskey RT. Organ distribution in rats of two members of the low-density lipoprotein receptor gene family, gp330 and LRP/alpha 2MR, and the receptor-associated protein (RAP). *J Histochem Cytochem.* 1994;42(4):531–42. <https://doi.org/10.1177/42.4.7510321>.
48. Zheng Z, Nayak L, Wang W, Yurdagul A, Wang X, Cai B, Lapping S, Ozcan L, Ramakrishnan R, Pestell RG, Jain MK, Tabas I. An ATF6-tPA pathway in hepatocytes contributes to systemic fibrinolysis and is repressed by DACH1. *Blood.* 2019;133(7):743–53. <https://doi.org/10.1182/blood-2018-07-864843>.

Publisher's Note

Springer Nature remains neutral with regard to jurisdictional claims in published maps and institutional affiliations.

Ready to submit your research? Choose BMC and benefit from:

- fast, convenient online submission
- thorough peer review by experienced researchers in your field
- rapid publication on acceptance
- support for research data, including large and complex data types
- gold Open Access which fosters wider collaboration and increased citations
- maximum visibility for your research: over 100M website views per year

At BMC, research is always in progress.

Learn more biomedcentral.com/submissions

