

## Targeting PI3K $\delta$ and PI3K $\gamma$ signalling disrupts human AML survival and bone marrow stromal cell mediated protection

Genevra Pillinger<sup>1,\*</sup>, Niamh V. Loughran<sup>1,\*</sup>, Rachel E. Piddock<sup>1</sup>, Manar S. Shafat<sup>1</sup>, Lyubov Zaitseva<sup>1</sup>, Amina Abdul-Aziz<sup>1</sup>, Matthew J. Lawes<sup>2</sup>, Kristian M. Bowles<sup>1,2,\*\*</sup>, Stuart A. Rushworth<sup>1,\*\*</sup>

<sup>1</sup>Department of Molecular Haematology, Norwich Medical School, University of East Anglia, Norwich Research Park, Norwich, NR4 7TJ, United Kingdom

<sup>2</sup>Department of Haematology, Norfolk and Norwich University Hospitals NHS Trust, Norwich, NR4 7UY, United Kingdom

\* Denotes joint first authors

\*\* Denotes joint senior

**Correspondence to:** Kristian M. Bowles, **email:** k.bowles@uea.ac.uk  
Stuart A. Rushworth, **email:** s.rushworth@uea.ac.uk

**Keywords:** PI3K $\delta$ , PI3K $\gamma$ , AML, bone marrow stromal cells, duvelisib

**Received:** October 06, 2015

**Accepted:** April 16, 2016

**Published:** May 11, 2016

### ABSTRACT

Phosphoinositide-3-kinase (PI3K) is an enzyme group, known to regulate key survival pathways in acute myeloid leukaemia (AML). It generates phosphatidylinositol-3,4,5-triphosphate, which provides a membrane docking site for protein kinaseB activation. PI3K catalytic p110 subunits are divided into 4 isoforms;  $\alpha$ ,  $\beta$ ,  $\delta$  and  $\gamma$ . The PI3K $\delta$  isoform is always expressed in AML cells, whereas the frequency of PI3K $\gamma$  expression is highly variable. The functions of these individual catalytic enzymes have not been fully resolved in AML, therefore using the PI3K p110 $\delta$  and p110 $\gamma$ -targeted inhibitor IPI-145 (duvelisib) and specific p110 $\delta$  and p110 $\gamma$  shRNA, we analysed the role of these two p110 subunits in human AML blast survival. The results show that PI3K $\delta$  and PI3K $\gamma$  inhibition with IPI-145 has anti-proliferative activity in primary AML cells by inhibiting the activity of AKT and MAPK. Pre-treatment of AML cells with IPI-145 inhibits both adhesion and migration of AML blasts to bone marrow stromal cells. Using shRNA targeted to the individual isoforms we demonstrated that p110 $\delta$ -knockdown had a more significant anti-proliferative effect on AML cells, whereas targeting p110 $\gamma$ -knockdown significantly inhibited AML migration. The results demonstrate that targeting both PI3K $\delta$  and PI3K $\gamma$  to inhibit AML-BMSC interactions provides a biologic rationale for the pre-clinical evaluation of IPI-145 in AML.

### INTRODUCTION

Although clinically, morphologically and biologically acute myeloid leukaemia (AML) appears to represent a heterogeneous group of diseases, the disease seems to rely on common intra-cellular survival and self-renewal pathways downstream of the driver oncogene [1]. It is envisaged that inhibition of common dysregulated signalling pathways in AML would result in novel treatment strategies in the future. Tyrosine kinases (TKs) are an attractive potential target in AML, having been shown to be effective drugable targets in other types of leukaemia [2-4]. Moreover, receptor TKs (RTKs) are mutated in approximately 50% of all patients with

AML [5, 6]. Furthermore, cell survival and proliferation pathways dependent on TK activation, including MAPK; phosphoinositide 3-kinase (PI3K)/AKT; mTOR; NF- $\kappa$ B and STATs are deregulated in most, if not all, cases of AML [7-10].

PI3K is an enzyme group that generates phosphatidylinositol 3, 4, 5-triphosphate which provides a membrane docking site for the serine-threonine kinase Protein Kinase B (PKB), also known as AKT [8]. Many of the downstream effects of PI3K are mediated through AKT, which interacts with further downstream signalling molecules, which in turn regulate cell proliferation, cell migration and cell adhesion [8, 11]. It has been observed that activation of the PI3K/AKT pathway is present in over

60% of AML patients and is associated with decreased overall survival [12, 13]. The mechanisms leading to PI3K activation in AML, however presently remain unclear.

Class I PI3K catalytic p110 subunits are divided into 4 isoforms;  $\alpha$ ,  $\beta$ ,  $\delta$  and  $\gamma$ . Within the p110 catalytic subunit the p110 $\delta$  isoform is always expressed in AML cells [14, 15]. Conversely the p110 $\gamma$ , p110 $\alpha$  and p110 $\beta$  isoforms are heterogeneously expressed [16, 17]. PI3K has previously been reported to be downstream of survival, proliferation, adhesion and migration signals including CD117, FLT3, VLA4 and CXCR4 in a spectrum of benign and malignant haematopoietic cells [11, 18, 19]. In AML these signals play an important role in tumour survival. However, little is known about the role of PI3K in regulating bone marrow-derived AML survival signals.

## RESULTS

### PI3K inhibition reduces the survival of AML blasts

To determine the level of detectable PI3K $\delta$  and PI3K $\gamma$  in AML we examined five AML cell lines and eight primary AML samples. Figure 1A shows the expression profile of PI3K $\delta$  and PI3K $\gamma$  in AML cell lines and AML primary blasts. Figure 1B shows the expression profile of PI3K $\alpha$ , PI3K $\beta$ , PI3K $\delta$  and PI3K $\gamma$  in normal CD34+ cells and AML primary blasts. However, we observed variations in the level of detection between different cell lines and different primary AML samples: this is thought to be due to high heterogeneity within AML. Next we wanted to examine the effects of targeting PI3K $\delta$  and PI3K $\gamma$  in AML. To do this we first assessed the effect of various PI3K inhibitors including LY294002 (pan-PI3K inhibitor, which is not suitable for clinical use as it is toxic in vivo [20]) with a concentration of 25 $\mu$ M [21], CAL-101 (Idelalisib - PI3K $\delta$  inhibitor, which has been found to have a physiologically relevant concentration of between 0.3-1 $\mu$ M [22]) and IPI-145 (PI3K $\delta$  and PI3K $\gamma$  inhibitor, which has a physiologically relevant concentration of 1 $\mu$ M [23]) on AML cell lines. We treated AML cell lines with each drug and incubated them for 72hrs. Figure 1C shows that LY294002, IPI-145 and CAL-101 treatment resulted in a decrease in AML cell survival. Next we examined the effect of increasing concentrations of IPI-145 on AML blast survival. Figure 1D shows that all AML cell lines had a dose-dependent reduction in cell survival to increasing concentrations of IPI-145 after culture for 48 hours. Subsequently we examined the effect of IPI-145 treatment on primary AML blasts. Figure 1E shows that primary AML blast survival is reduced in response to increasing concentrations of IPI-145, after culture for 48 hours. Finally we examined the effect of IPI-145 on AML blast colony formation in methylcellulose. AML samples were sensitive to the effects of IPI-145 at concentrations of 1000nM (Figure 1F). Figure 1G shows that the AKT

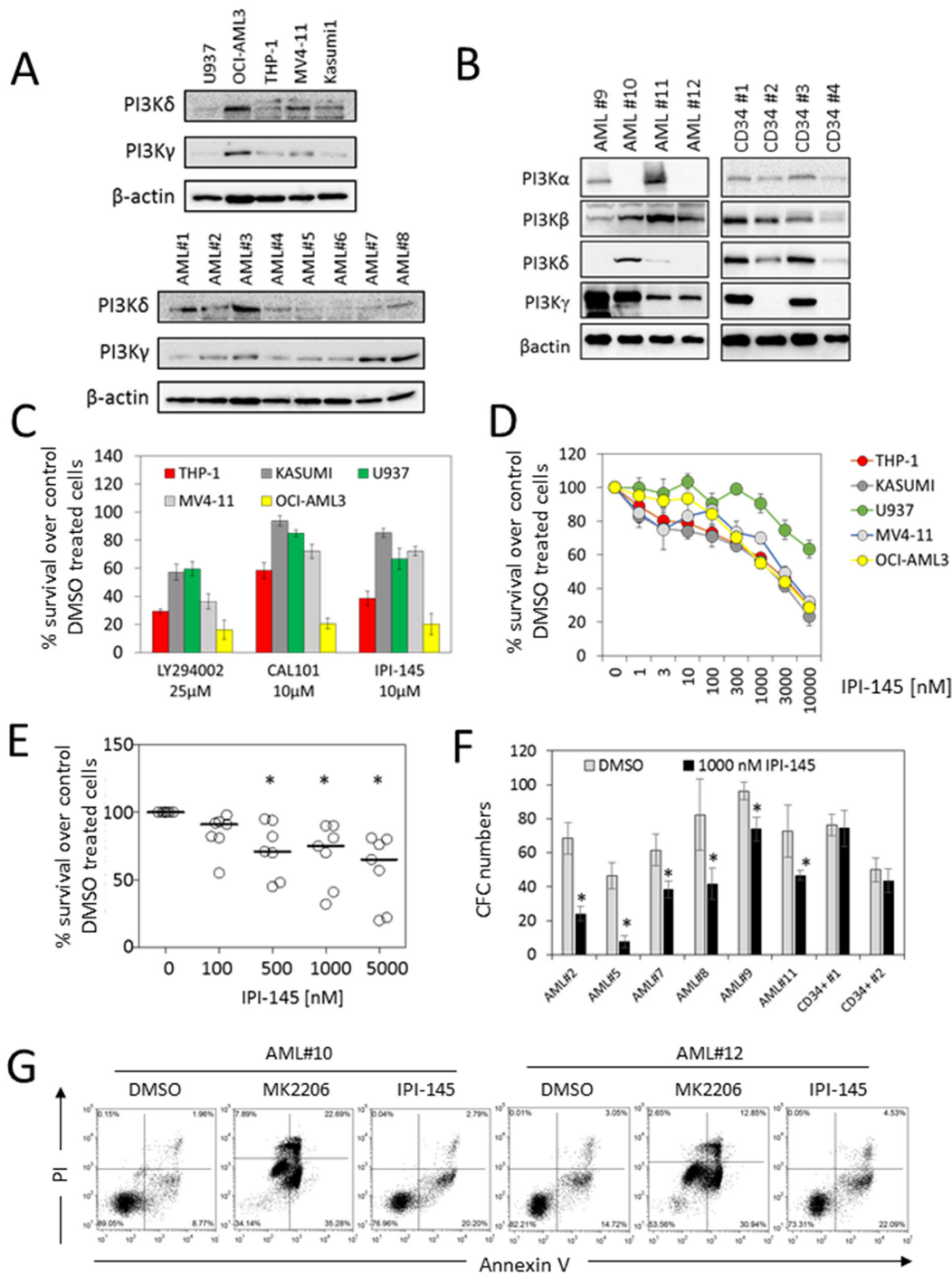
inhibitor, MK2206 and IPI-145 can induce apoptosis in AML cells. Together we report that PI3K $\delta$  and PI3K $\gamma$  are constitutively expressed in all AML samples tested and that specific inhibition of these isoforms in AML significantly reduces survival and colony formation. Importantly, this can be achieved at physiologically relevant concentrations of IPI-145 [24, 25].

### IPI-145 inhibits AKT phosphorylation in AML cell lines and primary AML blasts

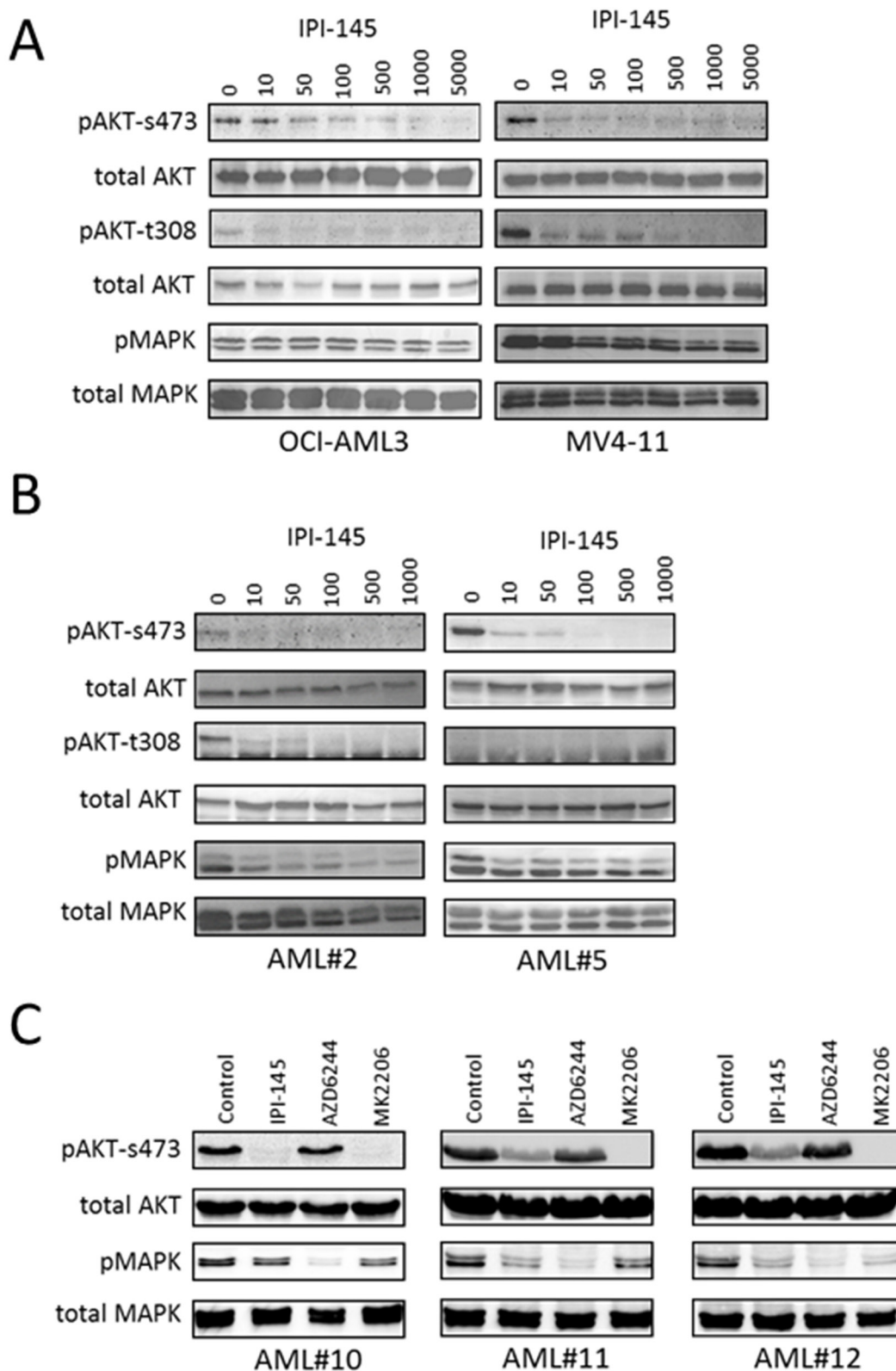
The next step was to determine the effect of PI3K $\delta$  and PI3K $\gamma$  inhibition on AKT activation. AML cell lines and primary tissue were treated with increasing concentrations of IPI-145 and cultured for 4 hours before Western blot analysis was performed. PI3K $\delta$  and PI3K $\gamma$  inhibition showed a reduction in AKT phosphorylation at serine 473 (s473) in all AML cell lines and primary AML tested. There was also a dose dependent reduction in MAPK phosphorylation in response to IPI-145 in OCI-AML3, MV4-11 cell lines (Figure 2A) and primary AML blasts (AML#2 and AML#5) (Figure 2B). These results demonstrate that PI3K $\delta$  and PI3K $\gamma$  inhibition with IPI-145 inhibits downstream signalling through AKT phosphorylation at the s473 and t308 and MAPK phosphorylation sites. One primary sample (AML#5) used in this assay did not express constitutive AKT phosphorylation at t308 so no inhibition of this activity was observed in these cells. Figure 2C shows the effect of IPI-145, MK2206 (AKT inhibitor) and AZD6244 (MAPK inhibitor) on three AML samples.

### IPI-145 inhibits adhesion of AML blasts to primary BMSC

The microenvironment is an essential component underpinning survival of AML blasts. Inhibiting AML blast adhesion to BMSCs via VLA4-VCAM/fibronectin interactions via the PI3K/AKT signalling pathway is associated with improvements in chemotherapy-induced tumour cytotoxicity [26]. Therefore, to determine whether PI3K $\delta$  and PI3K $\gamma$  inhibition with IPI-145 could overcome BMSC-AML mediated adhesion, AML cell lines and primary AML blasts were treated with increasing concentrations of IPI-145. Figure 3A and 3B show that PI3K $\delta$  and PI3K $\gamma$  inhibition with IPI-145 inhibits AML cell line(s) and primary blast adhesion to the BMSC. Next we examined if IPI-145, CAL101 and MK2206 could disrupt AML binding to BMSC (Figure 3C). Figure 3D shows that binding of three AML cell lines to fibronectin was disrupted by IPI-145. Finally we wanted to determine if IPI-145 could impair AML chemoresistance derived from the BMSC. Primary AML had a higher viability when incubated on BMSC or fibronectin (Figure 3E and 3F) compared to uncoated plates in the presence of daunorubicin 0.1 $\mu$ M (DNR) and cytarabine

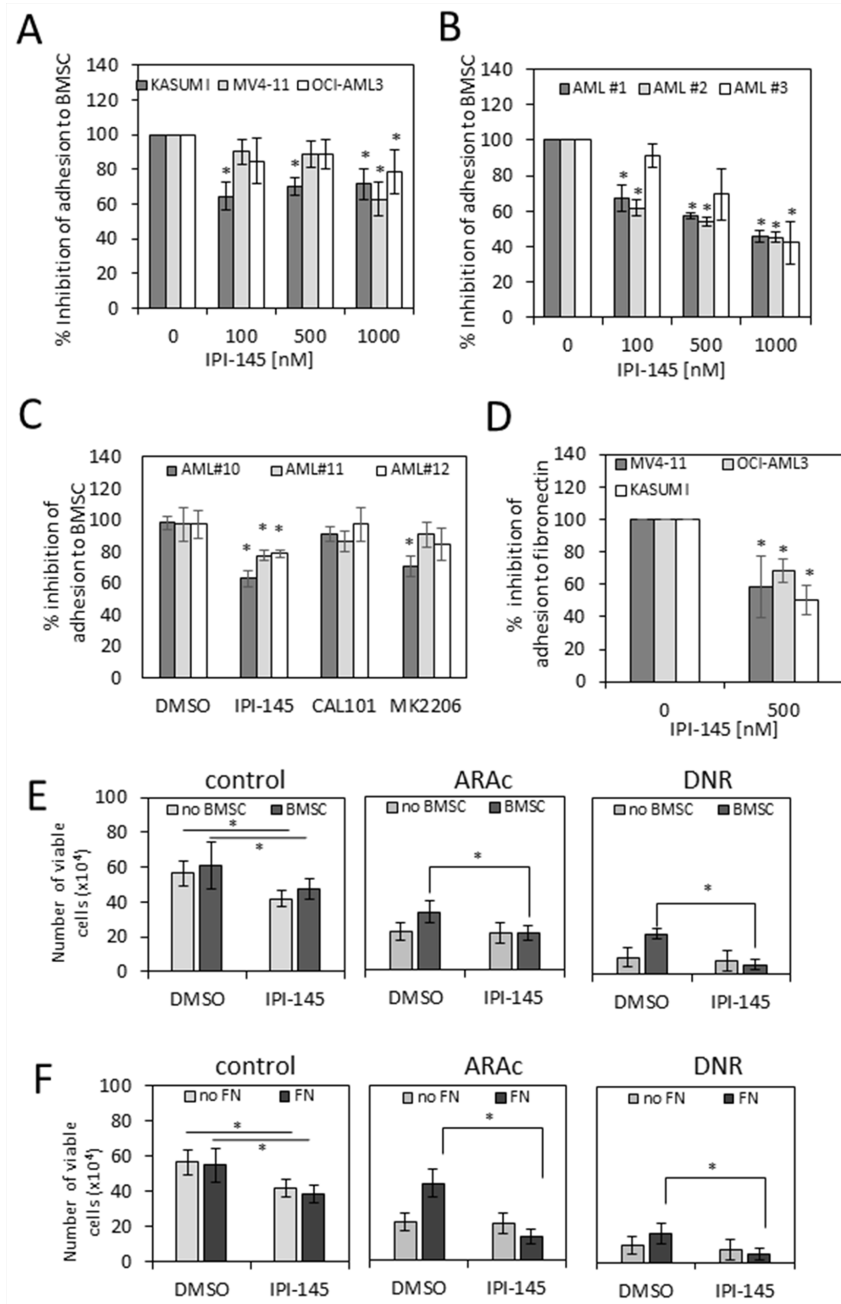


**Figure 1: Targeting PI3K inhibits AML survival in AML cell lines and primary AML blasts.** **A.** AML cell lines and AML patient cells were measured for constitutive levels of PI3K $\delta$  and PI3K $\gamma$  by Western blotting, blots reprobbed for  $\beta$ -actin to show sample loading. **B.** AML patient cells and CD34+ cells were measured for constitutive levels of PI3K $\alpha$ , PI3K $\beta$ , PI3K $\delta$  and PI3K $\gamma$  by Western blotting, blots reprobbed for  $\beta$ -actin to show sample loading. **C.** AML cell lines were treated with 25  $\mu$ M LY294002, 10  $\mu$ M CAL-101 or 10  $\mu$ M IPI-145 and cultured for 72 hours and then assessed by CellTiterGlo. **D.** AML cell lines were treated with increasing concentrations of IPI-145 and cultured for 48 hours and then cell viability was assessed by CellTiterGlo. **E.** Primary AML blasts were treated with increasing concentrations of IPI-145 and incubated for 48 hours and then assessed by CellTiterGlo. **F.** AML blasts, AML cell lines and CD34+ control cells were treated with 1000nM of IPI-145 and colony forming assays were performed to show the number of colonies. **G.** Primary AML blasts were treated with MK2206 (1000nM), IPI-145 (1000nM) for 48 hours and then analysed for apoptosis using annexin V and PI staining. \* indicates those results which are statistically significant using the Mann-Whitney U test (P-value <0.05), looking at the comparison between the control and treatment groups.



**Figure 2: IPI-145 inhibits AKT phosphorylation in AML.** A. and B. AML cell lines and primary AML blasts were treated with increasing doses of IPI-145 (nM) and cultured for 4 hours. Whole cell extracts were prepared and Western blot analysis was conducted for pAKT, pMAPK, and total AKT and MAPK protein levels. C. AML blasts were treated with IPI-145 (1000nM), MK2206 (1000nM) and AZD6244 (1000nM) and cultured for 4 hours. Whole cell extracts were prepared and Western blot analysis was conducted for pAKT, pMAPK, and total AKT and MAPK protein levels.





**Figure 3: IPI-145 inhibits adhesion of AML blasts to primary BMSC.** A. and B. AML cell lines and primary AML blasts (AML#1, AML#2 and AML#3) were treated with increasing doses of IPI-145 and cultured for 16 hours. Calcein-AM was added at 2.5 $\mu$ M for 1 hour, then washed off. The cells were then cultured on top of primary BMSC for 4 hours. Non-adherent cells were taken off with gentle washing. Adherent cells were measured using a fluorescence plate reader. Cell adhesion was then assessed and expressed as percentage of total cells in the assay. C. Primary AML were treated with 500nM of IPI-145, 1000nM CAL-101, and 1000nM MK2206. The cells were then cultured on top of primary BMSC for 4h. Non-adherent cells were taken off with gentle washing. Cell adhesion was then assessed and expressed as percentage of total cells in the assay. D. AML cell lines were treated with increasing doses of IPI-145 and cultured for 4 hours. Calcein-AM was added at 2.5 $\mu$ M for 1 hour, then washed off. The cells were then cultured on fibronectin (FN) coated plates. Non-adherent cells were taken off with gentle washing. Adherent cells were measured using a fluorescence plate reader. Cell adhesion was then assessed and expressed as percentage of total cells in the assay. E. Primary AML blasts were incubated alone (light grey) or on BMSC (dark grey). The samples were then pretreated with DMSO or IPI-145 (500nM) followed by daunorubicin (100nM) (DNR) or cytarabine (500nM) (ARA-c). Live AML blasts cells were counted using trypan blue exclusion. F. Primary AML blasts were incubated alone (light grey) or on fibronectin (FN) (dark grey). The samples were then pretreated with DMSO or IPI-145 (500nM) followed by daunorubicin (100nM) (DNR) or cytarabine (500nM) (ARA-c). Live AML blasts cells were counted using trypan blue exclusion. Significance for E. and F. between IPI-145 treated and control treated samples when cultured with or without BMSC or FN was determined using the two-way ANOVA with Sidak's post test. Results with  $P < 0.05$  were considered statistically significant (\*).

0.5 $\mu$ M (ARA-c), both of which are conventional chemotherapeutic agents used in AML. Pre-treatment of 3 AML samples with IPI-145 (500nM) nullified the difference between AML cells incubated on BMSC or fibronectin and those incubated on uncoated plates (Figure 3E and 3F). These results imply that AML chemotherapy resistance (to daunorubicin and cytarabine) conferred by BMSC is able to be overcome by PI3K $\delta$  and PI3K $\gamma$  inhibition in combination with these chemotherapy agents.

### **IPI-145 inhibits AML migration**

In order to determine whether PI3K $\delta$  and PI3K $\gamma$  inhibition can disrupt AML migration we undertook assays using BMSC conditioned media (CM) as a migration stimulus and normal media (NM) as a control. Figure 4A shows that primary AML blasts migrate towards BMSC CM, which is inhibited by the addition of 500nM IPI-145, which is consistent with the concentrations we have used throughout this study. PI3K $\gamma$  has been reported to regulate migration signals via G-protein coupled receptor (GPCR) activation in monocytes and macrophages [27]. In addition, GPCR activation has been shown to signal via the phosphorylation of AKT [28]. Therefore we examined the effect of IPI-145 on AKT s473 and t308 phosphorylation in AML blasts in response to BMSC conditioned media (CM). Figure 4B shows that BMSC CM induced pAKT (s473 and t308) activation is inhibited by IPI-145 at 100nM. Since SDF1-CXCR4 axis has been described as an important mediator of AML migration [29], we analysed the effect of increasing concentrations of IPI-145 treatment on SDF1 induced AML migration. Figure 4C shows that IPI-145 inhibits SDF1 induced AML migration in a dose dependent manner. Figure 4D shows that IPI-145 did not inhibit SDF1-induced CD34+ migration. Figure 4E shows that the AKT inhibitor MK2206 had no effect on SDF1-induced AML blast migration. These results show that PI3K $\delta$  and PI3K $\gamma$  regulate AML cellular migration in response to factors secreted by BMSC and furthermore that blast migration can be blocked by IPI-145 through its inhibitory effect on phosphorylation of AKT at t308.

### **PI3K $\delta$ modulates adhesion and proliferation and PI3K $\gamma$ modulates adhesion, proliferation and migration in human AML**

We next evaluated the genetic inhibition of PI3K $\delta$  and PI3K $\gamma$  using shRNA in OCI-AML3. To do this we generated lentivirus-mediated PI3K $\delta$  and PI3K $\gamma$  knockdowns. These constructs induced PI3K $\delta$  and PI3K $\gamma$  knockdown confirmed for up to 7 days by real-time PCR (Figure 5A). Using these constructs the role of PI3K $\delta$  and PI3K $\gamma$  in cell viability was assessed. The introduction of PI3K $\delta$  shRNA inhibited the proliferation of OCI-AML3 at three and seven days post infection (Figure 5B), while the introduction of PI3K $\gamma$  shRNA inhibited the proliferation

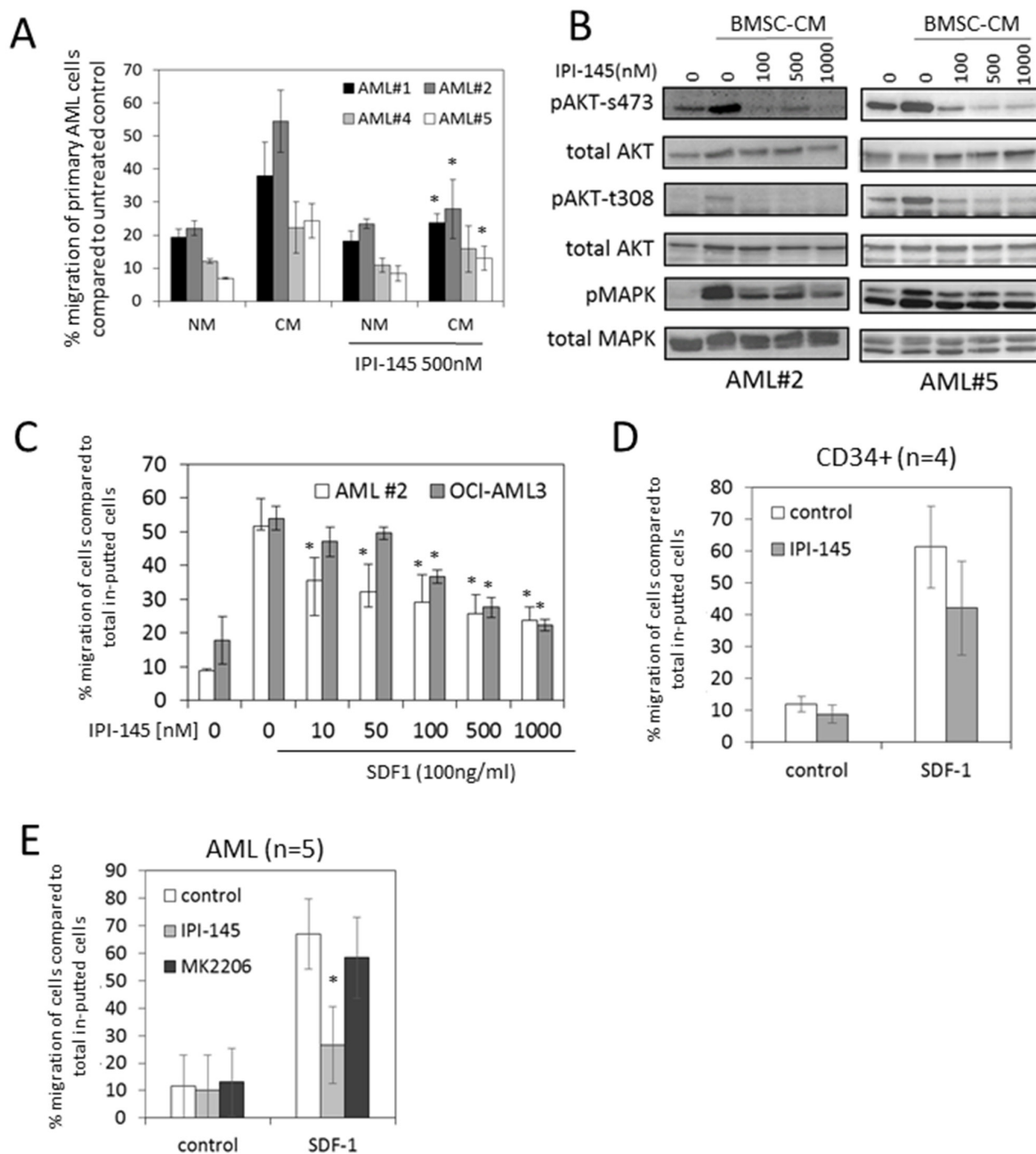
of OCI-AML3 only seven days post infection (Figure 5B). CellTiterGlo was also used to determine cell viability of OCI-AML3 transduced with either PI3K $\delta$  or PI3K $\gamma$  knockdown and showed a similar result to the cell count data (data not shown). When we analysed the role of PI3K $\delta$  and PI3K $\gamma$  in AML adhesion assays we also found that both isoforms did not inhibit AML adhesion to BMSC (Figure 5C). Next we examined migration and found that only PI3K $\gamma$  shRNA inhibited the migration of AML to SDF-1 (Figure 5D). Finally we assessed the effect of PI3K $\delta$  and PI3K $\gamma$  inhibition on AKT activity. Both PI3K $\delta$  and PI3K $\gamma$  shRNA inhibited AKT-s473, whilst PI3K $\gamma$  shRNA could also inhibit t308 phosphorylation (Figure 5E). Together these studies define distinct functions of PI3K $\delta$  and PI3K $\gamma$  isoforms in AML.

## **DISCUSSION**

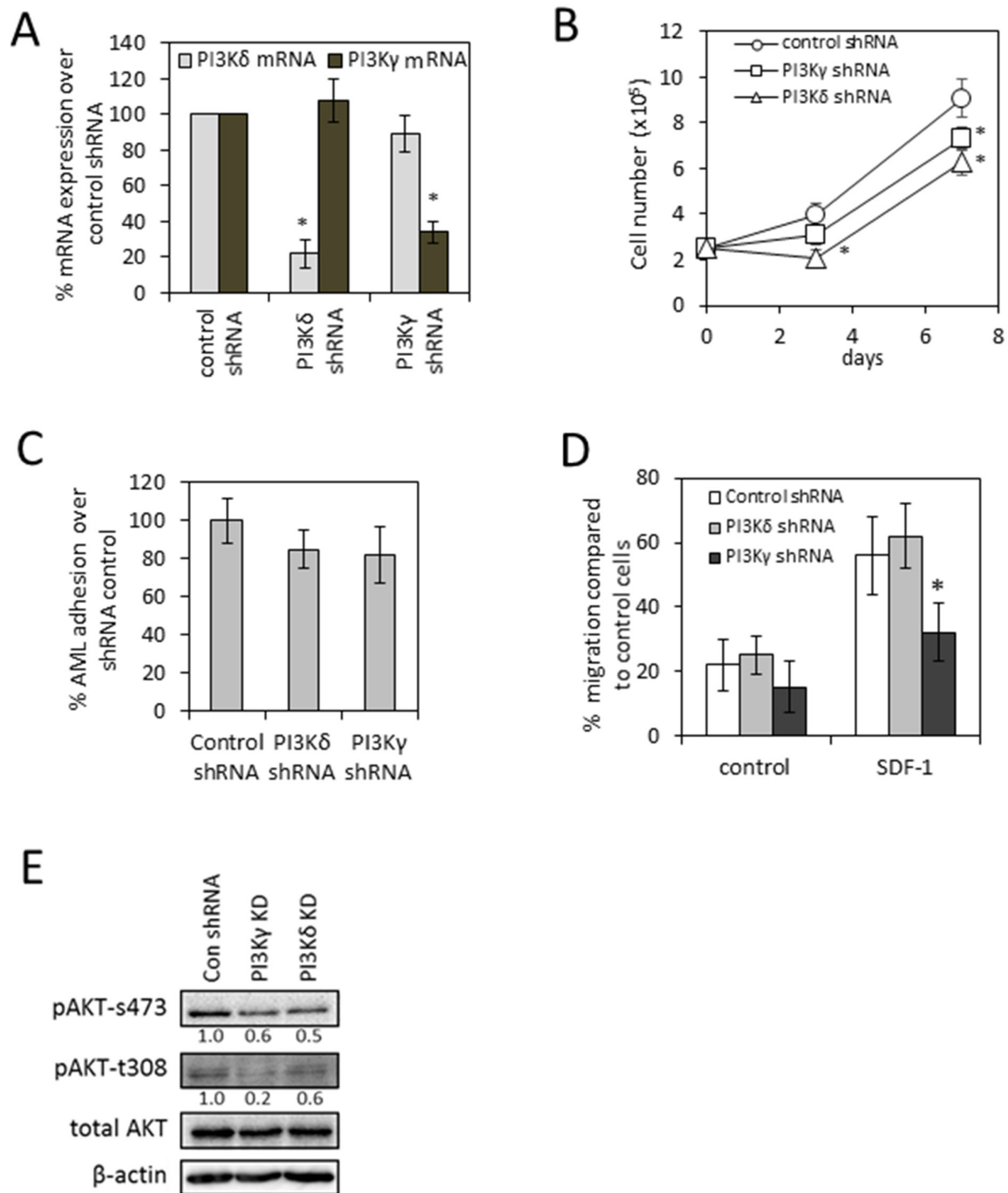
Despite the recognition that AML represents a morphologically and genetically diverse collection of tumours it is also apparent that these tumours rely on common programs of self-renewal. The PI3K/AKT pathway is known to be constitutively active in 50-80% of patients with AML and is associated with overall decreased survival [15, 30]. Accordingly the PI3K/AKT pathway may represent a valid therapeutic target which could prove applicable and effective in broad populations of patients with AML.

It has been reported that AML proliferation and survival can be inhibited by the pan PI3K inhibitor LY 294002 [13]. Moreover, reports show that idelalisib (PI3K $\delta$  inhibitor) shows little or no inhibitory effect on AML [31]. This suggests that PI3K p110 driven pro-survival signalling is isoform specific. In this study we observe that both PI3K $\delta$  and PI3K $\gamma$  are ubiquitously expressed in AML cell lines and AML blasts. We further demonstrate that inhibiting PI3K with LY294002 reduces the survival of all AML cell lines tested, however LY294002 is not suitable for use as a clinical drug due to its high levels of toxicity in-vivo. Moreover, inhibiting both PI3K $\delta$  and PI3K $\gamma$  using IPI-145 demonstrates a greater inhibitory effect in AML cell lines compared to inhibiting PI3K $\delta$  alone. Furthermore, when we examine the effect of IPI-145 on primary AML blasts we confirm that we can inhibit survival and colony formation at doses that are reportedly achievable in vivo [24, 25].

In non-malignant myeloid cells both PI3K $\delta$  and PI3K $\gamma$  have distinct roles. For example, in mast cells PI3K $\delta$  is required for activation by SCF and IL-3, which induces mast cell proliferation and adhesion [32], while PI3K $\gamma$  activation controls chemokine mediated GPCR activation and as such is an essential amplifier of mast cell function [33]. In AML, the mechanisms leading to PI3K/AKT activation are not yet clear. It is known that activation of receptor tyrosine kinases (RTK) expressed on the cell surface of AML have been shown to lead



**Figure 4: IPI-145 inhibits AML migration to BMSC.** **A.** Primary AML blasts were pre-treated with IPI-145 and then Calcein-AM was added at 2.5 $\mu$ M for 1 hour, then washed off. The cells were then placed in the upper well of a 5.0 $\mu$ M transwell plate. The lower chamber contained normal media (NM) or BMSC conditioned media (CM). Cells were incubated for 3 hours and then assessed using a fluorescent plate reader. **B.** Primary AML blasts (AML#2 and AML#5) were treated with increasing doses of IPI-145 and cultured for 4 hours. They were then incubated with BMSC conditioned media for 5 minutes. Whole cell extracts were prepared and Western blot analysis was conducted for pAKT (s473 and t308) and total AKT, as well as pMAPK and total MAPK. **C.** Primary AML blasts (AML#2) and AML cell line (OCI-AML3) were pre-treated with IPI-145; Calcein-AM was added at 2.5 $\mu$ M for 1 hour, then washed off. The cells were then placed in the upper well of a 5.0 $\mu$ M transwell plate. The lower chamber contained increasing doses of SDF1. Cells were incubated for 3 hours and then assessed using fluorescent plate reader. **D.** CD34<sup>+</sup> hematopoietic stem cells were pre-treated with IPI-145 and then Calcein-AM was added at 2.5 $\mu$ M for 1 hour, then washed off. The cells were then placed in the upper well of a 5.0 $\mu$ M transwell plate. The lower chamber contained increasing doses of SDF1. Cells were incubated for 3 hours and then assessed using fluorescent plate reader. **E.** Primary AML blasts were pre-treated with IPI-145 (1000nM) or MK2206 (1000nM) for 30 mins and then Calcein-AM was added at 2.5 $\mu$ M for 1 hour, then washed off. The cells were then placed in the upper well of a 5.0 $\mu$ M transwell plate. The lower chamber contained increasing doses of SDF1. Cells were incubated for 3 hours and then assessed using fluorescent plate reader. For all results in this figure except (B) a two-way ANOVA with Sidak's post test was used. Results with  $P < 0.05$  were considered statistically significant (\*).



**Figure 5: shRNA knockdown of PI3K $\delta$  and PI3K $\gamma$ .** **A.** AML cell line (OCI-AML3) was transduced with either PI3K $\delta$  or PI3K $\gamma$ -targeted shRNA or a negative-targeted shRNA lentiviral construct for 72 h. RNA was extracted and assessed for PI3K $\delta$  and PI3K $\gamma$  mRNA by real-time PCR. mRNA expression was normalized to GAPDH mRNA levels (n=4). **B.** OCI-AML3 was transduced with either PI3K $\delta$  or PI3K $\gamma$ -targeted shRNA lentivirus for up to 7 days. Cell numbers were measured and expressed as a percentage of control transfected cells. **C.** OCI-AML3 was transduced with either PI3K $\delta$  or PI3K $\gamma$ -targeted shRNA lentivirus for 72 h. Calcein-AM was added at 2.5 $\mu$ M for 1 hour, then washed off. The cells were then cultured on top of primary BMSC for 4 hours. Non-adherent cells were removed with gentle washing. Adherent cells were measured using fluorescence plate reader. Cell adhesion was then assessed and expressed as percentage of total cells in the assay. **D.** OCI-AML3 were transduced with either PI3K $\delta$  or PI3K $\gamma$ -targeted shRNA lentivirus for 72 h and then placed in the upper well of a 5.0 $\mu$ M transwell plate. The lower chamber contained 500ul of serum free media supplemented with SDF1 (100 ng/ml) for 3 hours; we then assessed cell numbers using a flow cytometer. Data were normalised to control-KD cells. **E.** OCI-AML3 were transduced with either PI3K $\delta$  or PI3K $\gamma$ -targeted shRNA lentivirus for 72 h and then protein was extracted and analysed for pAKT (s473 and t308) and total AKT using Western blotting. \* indicates those results which are statistically significant (P-value <0.05), comparing the KD samples to the control KD.



to downstream AKT phosphorylation [18, 19, 34]. Moreover, others have shown that activation of GPCR on AML lead to downstream AKT phosphorylation [35, 36]. What has not been described is the specific PI3K isoform/s that are responsible for the different models of activation of either RTK or GPCR. In addition, there is no data describing which AKT phosphorylation sites are activated by RTK or GPCR in AML. Here using shRNA knockdown and IPI-145 we show that PI3K $\delta$  and PI3K $\gamma$  together control the proliferation signals in human AML, whereas PI3K $\gamma$  alone controls the GPCR regulated migration signalling.

AKT phosphorylation on s473 can be detected in up to 80% of AML patients while the information on AKT phosphorylation on t308 is less well characterised. A study by Gallay et al (2009), showed that 24 out of 53 AML patients had high AKT phosphorylation on t308 and this (but not AKT phosphorylation on s473) was associated with high-risk cytogenetics and predicted poor overall survival in AML [37]. Our results show that IPI-145 can inhibit constitutive AKT phosphorylation on both s473 and t308. Moreover we also show that conditioned media from BMSC induced AKT phosphorylation on both s473 and t308 which was inhibited by IPI-145. These data demonstrate that in-vitro IPI-145 can inhibit BMSC-mediated AKT phosphorylation at both s473 and t308 in primary AML blasts.

The interactions between tumour and its bone marrow microenvironment have an important role in regulating the survival and proliferation of AML blasts. We have shown that inhibition of PI3K $\delta$  and PI3K $\gamma$  can disrupt adhesion of AML blasts to BMSC and fibronectin, and that pre-treatment with IPI-145 can overcome the chemotherapy resistance which BMSC have been shown to provide to AML blasts. Overall we have shown an important role for PI3K and downstream signalling in the AML / BMSC pro-survival interaction. As such we provide data that support the clinical evaluation of combined PI3K $\gamma$  and  $\delta$  inhibition (with IPI-145) in human AML.

## MATERIALS AND METHODS

### Materials

Anti-phosphorylated and pan, AKT, and MAPK antibodies, as well as PI3K $\gamma$  were purchased from Cell Signalling Technology (Cambridge, MA, USA). Anti-CD34-PE, anti-CD90-FITC, anti-CD73-PE, anti-CD105-APC antibodies as well as SDF-1 were purchased from Miltenyi Biotec (Auburn, CA, USA). Anti-PI3K $\delta$  antibody was purchased from R&D systems (Abingdon, UK). LY294002, CAL101, IPI-145, MK2206 and AZD6224 were obtained from Selleck Chemicals (Tx, USA). All other reagents were obtained from Sigma-Aldrich (St Louis, MO, USA), unless indicated.

## Methods

### Cell lines and primary cells

The AML-derived cell lines were obtained from the European Collection of Cell Cultures and DMSZ where they are authenticated by DNA-fingerprinting. In the laboratory they are used at low passage number for a maximum of six months post-resuscitation, testing regularly for Mycoplasma infection. AML blasts were obtained from patients' bone marrow or blood following informed consent and under approval from the UK National Research Ethics Service (LRECref07/H0310/146) Table 1. For primary cell isolation, heparinized blood was collected from volunteers and human peripheral blood mononuclear cells (PBMCs) isolated by Histopaque (Sigma-Aldrich) density gradient centrifugation. AML samples that were less than 80% blasts were purified using the CD34 positive selection kit.

Human bone marrow stromal cells (BMSC) were isolated by bone marrow aspirates from AML patients. Mononuclear cells were collected by gradient centrifugation and plated in growth medium containing DMEM and 20% FBS and 1% l-glutamine. The non-adherent cells were removed after 2 days. When 60%-80% confluent, adherent cells were trypsinised and expanded for 3-5 weeks. BMSCs were checked for positive expression of CD105, CD73, and CD90 and the lack of expression of CD45 and CD34 by flow cytometry as previously described [38].

### Western immunoblotting

Sodium dodecyl sulfate-polyacrylamide gel electrophoresis and Western blot analyses were performed as described previously. Briefly, whole cell lysates were extracted and sodium dodecyl sulfate-polyacrylamide gel electrophoresis separation performed [39]. Protein was transferred to nitrocellulose and Western blot analysis performed with the indicated antisera according to their manufacturer's guidelines.

### Proliferation and apoptosis

Cells were treated with different doses of IPI-145 then viable numbers measured with Cell TiterGlo (Promega, Southampton, UK). For the AML-BMSC co-cultures AML cell viability was measured using trypan blue exclusion.

### Clonogenic methylcellulose assays

Control CD34+ HSC and primary AML cells ( $1 \times 10^3$  to  $5 \times 10^4$  cells) were plated in methylcellulose medium (R&D systems) and colonies were visualised, measured and counted after 10 days. For normal CD34+ CFU-GM, CFU-M, CFU-M and BFU-E was measured.

### Migration assays

Migration assays were performed in triplicate in transwell permeable plates with 5.0 $\mu$ M pores (Neuroprobe,

**Table 1: AML Sample information**

ID	Age	Sex	WHO classification	Cytogenetics
AML #1	70	m	AML with minimal differentiation	Normal
AML #2	40	m	AML with minimal differentiation	Normal
AML #3	91	f	AML NOS	Not available
AML #4	59	f	AML with t(8;21)(q22;q22); RUNX1-RUNX1T1	t(8;21)
AML #5	51	m	AML with monocytic differentiation	pending
AML #6	65	m	AML with minimal differentiation	Normal
AML #7	23	f	AML without maturation	t(5;12)
AML #8	65	m	AML with maturation	Trisomy 13
AML #9	37	m	AML without maturation	Normal
AML #10	65	m	AML with maturation	Not available
AML #11	68	m	Therapy related AML	Not available
AML#12	63	m	AML with MDS related changes	Not available

MD, USA). The lower compartment contained 30µL of conditioned media or serum free media supplemented with 100 ng/ml SDF1 and the cells were applied to the upper compartment and allowed to migrate for 3 h. The amount of viable migrated cells was determined by counting using trypan blue exclusion and expressed as a percentage of the input.

#### BMSC/fibronectin-AML cell adhesion assay

BMSCs were grown in 96-well plates. Primary AML cells were incubated with 2.5 µM calcein-AM for 1 h at 37°C and 5% CO<sub>2</sub>. The fluorescence-labelled AML cells were added into stromal cell coated 96-well plates and incubated for the indicated time points. Non-adherent calcein-labelled cells were removed by gently washing and adherent cells were quantified in a fluorescence multi-well plate reader. For AML blast adhesion onto fibronectin (FN), 96 well plates were coated with 10 mg/ml FN for 1 h before the fluorescence-labelled AML cells were added. Again non-adherent calcein-labelled cells were removed by gently washing and adherent cells were quantitated in a fluorescence multi-well plate reader.

#### RNA extraction and real-time PCR

Total RNA was extracted from 5 x 10<sup>5</sup> cells using the Nucleic acid Prep Station from Applied Biosystems (Paisley, UK), according to the manufacturer's instructions. Reverse transcription was performed using the RNA polymerase chain reaction (PCR) core kit (Applied Biosystems). Relative quantitative real-time PCR used SYBR green technology (Roche, Burgess Hill, UK) on cDNA generated from the reverse transcription of purified RNA. After pre-amplification (95°C for 2 minutes), the PCRs were amplified for 45 cycles (95°C

for 15 seconds and 60°C for 10 seconds and 72°C for 10 seconds) on a 384-well LightCycler 480 (Roche). Each mRNA expression was normalized against GAPDH mRNA expression using the standard curve method.

#### Transfections

OCI-AML3 were plated onto 12 well plates at 5 x 10<sup>4</sup> cells/well/0.5ml. Cells were infected with lentiviral stocks at an MOI of 15 in the presence of 8 µg/ml Polybrene. Transduced cells were analysed by real-time-PCR (Roche).

#### Statistical analyses

We used the Mann-Whitney U test to compare results in control to treated groups. Results with P < 0.05 were considered statistically significant (\*). We also use the Two-way ANOVA with Sidak's post test. Results with P < 0.05 were considered statistically significant (\*). Results represent the mean ± SD of 4 independent experiments. For Western blotting, data are representative images of 3 independent experiments. We generated statistics with Graphpad Prism 5 software (Graphpad, San Diego, CA, USA).

#### ACKNOWLEDGMENTS

The authors wish to thank the Worldwide Cancer Research, The Big C, the National Institutes for Health Research (UK) and the Department of Higher Education and Research of the Libyan Government for funding and the Norfolk and Norwich tissue bank (UK) for help with sample collection and storage. We thank Professor Richard Ball and Mr Iain Sheriffs, Norwich tissue bank (UK) for help with sample collection and storage.

## CONFLICTS OF INTEREST

The authors declare no conflict of interest

## REFERENCES

1. Kvinlaug BT, Chan WI, Bullinger L, Ramaswami M, Sears C, Foster D, Lazic SE, Okabe R, Benner A, Lee BH, De Silva I, Valk PJ, Delwel R, Armstrong SA, Dohner H, Gilliland DG, et al. Common and overlapping oncogenic pathways contribute to the evolution of acute myeloid leukemias. *Cancer Res.* 2011; 71:4117-4129.
2. Byrd JC, Brown JR, O'Brien S, Barrientos JC, Kay NE, Reddy NM, Coutre S, Tam CS, Mulligan SP, Jaeger U, Devereux S, Barr PM, Furman RR, Kipps TJ, Cymbalista F, Pocock C, et al. Ibrutinib versus Ofatumumab in Previously Treated Chronic Lymphoid Leukemia. *N Engl J Med.* 2014. 371:213-232.
3. Druker BJ. Translation of the Philadelphia chromosome into therapy for CML. *Blood.* 2008; 112:4808-4817.
4. Furman RR, Sharman JP, Coutre SE, Cheson BD, Pagel JM, Hillmen P, Barrientos JC, Zelenetz AD, Kipps TJ, Flinn I, Ghia P, Eradat H, Ervin T, Lamanna N, Coiffier B, Pettitt AR, et al. Idelalisib and Rituximab in Relapsed Chronic Lymphocytic Leukemia. *New England Journal of Medicine.* 2014; 370:997-1007.
5. Renneville A, Roumier C, Biggio V, Nibourel O, Boissel N, Fenaux P and Preudhomme C. Cooperating gene mutations in acute myeloid leukemia: a review of the literature. *Leukemia.* 2008; 22:915-931.
6. Nanri T, Matsuno N, Kawakita T, Suzushima H, Kawano F, Mitsuya H and Asou N. Mutations in the receptor tyrosine kinase pathway are associated with clinical outcome in patients with acute myeloblastic leukemia harboring t(8;21) (q22;q22). *Leukemia.* 2005; 19:1361-1366.
7. Min YH, Eom JI, Cheong JW, Maeng HO, Kim JY, Jeung HK, Lee ST, Lee MH, Hahn JS and Ko YW. Constitutive phosphorylation of Akt//PKB protein in acute myeloid leukemia: its significance as a prognostic variable. *Leukemia.* 2003; 17:995-997.
8. Park S, Chapuis N, Tamburini J, Bardet V, Cornillet-Lefebvre P, Willems L, Green A, Mayeux P, Lacombe C and Bouscary D. Role of the PI3K/AKT and mTOR signaling pathways in acute myeloid leukemia. *Haematologica.* 2010; 95:819-828.
9. Guzman ML, Neering SJ, Upchurch D, Grimes B, Howard DS, Rizzieri DA, Luger SM and Jordan CT. Nuclear factor-kappa B is constitutively activated in primitive human acute myelogenous leukemia cells. *Blood.* 2001; 98:2301-2307.
10. Spiekermann K, Biethahn S, Wilde S, Hiddemann W and Alves F. Constitutive activation of STAT transcription factors in acute myelogenous leukemia. *European Journal of Haematology.* 2001; 67:63-71.
11. Zaitseva L, Murray MY, Shafat MS, Lawes MJ, MacEwan DJ, Bowles KM and Rushworth SA. Ibrutinib inhibits SDF1/CXCR4 mediated migration in AML. *Oncotarget.* 2014; 5:9930-9937. doi: 10.18632/oncotarget.2479.
12. Tamburini J, Elie C, Bardet V, Chapuis N, Park S, Broët P, Cornillet-Lefebvre P, Lioure B, Ugo V, Blanchet O, Ifrah N, Witz F, Dreyfus F, Mayeux P, Lacombe C and Bouscary D. Constitutive phosphoinositide 3-kinase/Akt activation represents a favorable prognostic factor in de novo acute myelogenous leukemia patients. *Blood.* 2007;110:1025-8.
13. Xu Q, Simpson S-E, Scialla TJ, Bagg A and Carroll M. Survival of acute myeloid leukemia cells requires PI3 kinase activation. *Blood.* 2003; 102:972-980.
14. Grandage VL, Gale RE, Linch DC and Khwaja A. PI3-kinase//Akt is constitutively active in primary acute myeloid leukaemia cells and regulates survival and chemoresistance via NF-kB, MAPkinase and p53 pathways. *Leukemia.* 2005; 19:586-594.
15. Tamburini J, Elie C, Bardet V, Chapuis N, Park S, Broët P, Cornillet-Lefebvre P, Lioure B, Ugo V, Blanchet O, Ifrah N, Witz F, Dreyfus F, Mayeux P, Lacombe C and Bouscary D. Constitutive phosphoinositide 3-kinase/Akt activation represents a favorable prognostic factor in de novo acute myelogenous leukemia patients. *Blood.* 2007; 110:1025-1028.
16. Sujobert P, Bardet V, Cornillet-Lefebvre P, Hayflick JS, Prie N, Verdier F, Vanhaesebroeck B, Muller O, Pesce F, Ifrah N, Hunault-Berger M, Berthou C, Villemagne B, Jourdan E, Audhuy B, Solary E, et al. Essential role for the p110δ isoform in phosphoinositide 3-kinase activation and cell proliferation in acute myeloid leukemia. *Blood.* 2005; 106:1063-1066.
17. Billottet C, Grandage VL, Gale RE, Quattropiani A, Rommel C, Vanhaesebroeck B and Khwaja A. A selective inhibitor of the p110[delta] isoform of PI 3-kinase inhibits AML cell proliferation and survival and increases the cytotoxic effects of VP16. *Oncogene.* 2006; 25:6648-6659.
18. Kazi JU, Vaapil M, Agarwal S, Bracco E, Pahlman S and Ronnstrand L. The tyrosine kinase CSK associates with FLT3 and c-Kit receptors and regulates downstream signaling. *Cell Signal.* 2013; 25:1852-1860.
19. Rushworth SA, Pillinger G, Abdul-Aziz A, Piddock R, Shafat MS, Murray MY, Zaitseva L, Lawes MJ, MacEwan DJ and Bowles KM. Activity of Bruton's tyrosine-kinase inhibitor ibrutinib in patients with CD117-positive acute myeloid leukaemia: a mechanistic study using patient-derived blast cells. *The Lancet Haematology.* 2015; 2:e204-e211.
20. Chircop M and Speidel D. (2015). Molecular mechanisms of cellular stress responses in cancer and their therapeutic implications: *Frontiers Media SA.*
21. Badinloo M and Esmaili-Mahani S. Phosphatidylinositol 3-kinases inhibitor LY294002 potentiates the cytotoxic effects of doxorubicin, vincristine, and etoposide in a panel of cancer cell lines. *Fundamental & Clinical Pharmacology.* 2014; 28:414-422.

22. Brown JR, Byrd JC, Coutre SE, Benson DM, Flinn IW, Wagner-Johnston ND, Spurgeon SE, Kahl BS, Bello C, Webb HK, Johnson DM, Peterman S, Li D, Jahn TM, Lannutti BJ, Ulrich RG, et al. Idelalisib, an inhibitor of phosphatidylinositol 3-kinase p110delta, for relapsed/refractory chronic lymphocytic leukemia. *Blood*. 2014; 123:3390-3397.
23. Balakrishnan K, Peluso M, Fu M, Rosin NY, Burger JA, Wierda WG, Keating MJ, Faia K, O'Brien S, Kutok JL and Gandhi V. The phosphoinositide-3-kinase (PI3K)-delta and gamma inhibitor, IPI-145 (Duvelisib), overcomes signals from the PI3K/AKT/S6 pathway and promotes apoptosis in CLL. *Leukemia*. 2015; 29:1811-1822.
24. Dong S, Guinn D, Dubovsky JA, Zhong Y, Lehman A, Kutok J, Woyach JA, Byrd JC and Johnson AJ. IPI-145 antagonizes intrinsic and extrinsic survival signals in chronic lymphocytic leukemia cells. *Blood*. 2014; 124:3583-3586.
25. Horwitz SM, Finn I, Patel MR, Younes A, Foss FM, Oki Y and Sweeney J, Allen K, Dunbar J, Kelly PF, Kahl BS; Memorial Sloan-Kettering Cancer Center, et al. Preliminary safety and efficacy of IPI-145, a potent inhibitor of phosphoinositide-3-kinase- $\delta,\gamma$ , in patients with relapsed/refractory lymphoma. 2013 ASCO Annual Meeting. *J Clin Oncol*. 2013; 31 (suppl; abstr 8518).
26. Matsunaga T, Takemoto N, Sato T, Takimoto R, Tanaka I, Fujimi A, Akiyama T, Kuroda H, Kawano Y, Kobune M, Kato J, Hirayama Y, Sakamaki S, Kohda K, Miyake K and Niitsu Y. Interaction between leukemic-cell VLA-4 and stromal fibronectin is a decisive factor for minimal residual disease of acute myelogenous leukemia. *Nat Med*. 2003; 9:1158-1165.
27. Camps M, Ruckle T, Ji H, Ardisson V, Rintelen F, Shaw J, Ferrandi C, Chabert C, Gillieron C, Francon B, Martin T, Gretener D, Perrin D, Leroy D, Vitte P-A, Hirsch E, et al. Blockade of PI3K[ $\gamma$ ] suppresses joint inflammation and damage in mouse models of rheumatoid arthritis. *Nat Med*. 2005; 11:936-943.
28. Walser R, Burke JE, Gogvadze E, Bohnacker T, Zhang X, Hess D, Küenzi P, Leitges M, Hirsch E, Williams RL, Laffargue M and Wymann MP. PKC $\beta$  Phosphorylates PI3K $\gamma$  to Activate It and Release It from GPCR Control. *PLoS Biol*. 2013; 11:e1001587.
29. Nervi B, Ramirez P, Rettig MP, Uy GL, Holt MS, Ritchey JK, Prior JL, Piwnica-Worms D, Bridger G, Ley TJ and DiPersio JF. Chemosensitization of acute myeloid leukemia (AML) following mobilization by the CXCR4 antagonist AMD3100. *Blood*. 2009; 113:6206-6214.
30. Xu Q, Simpson S-E, Scialla TJ, Bagg A and Carroll M. (2003). Survival of acute myeloid leukemia cells requires PI3 kinase activation. *Blood*. 2003; 102:972-980.
31. Lannutti BJ, Meadows SA, Herman SEM, Kashishian A, Steiner B, Johnson AJ, Byrd JC, Tyner JW, Loriaux MM, Deininger M, Druker BJ, Puri KD, Ulrich RG and Giese NA. CAL-101, a p110 $\delta$  selective phosphatidylinositol-3-kinase inhibitor for the treatment of B-cell malignancies, inhibits PI3K signaling and cellular viability. *Blood*. 2011; 117:591-594.
32. Ali K, Bilancio A, Thomas M, Pearce W, Gilfillan AM, Tkaczyk C, Kuehn N, Gray A, Giddings J, Peskett E, Fox R, Bruce I, Walker C, Sawyer C, Okkenhaug K, Finan P, et al. Essential role for the p110delta phosphoinositide 3-kinase in the allergic response. *Nature*. 2004; 431:1007-1011.
33. Laffargue M, Calvez R, Finan P, Trifilieff A, Barbier M, Altruda F, Hirsch E and Wymann MP. Phosphoinositide 3-kinase gamma is an essential amplifier of mast cell function. *Immunity*. 2002; 16:441-451.
34. Doepfner KT, Spertini O and Arcaro A. Autocrine insulin-like growth factor-I signaling promotes growth and survival of human acute myeloid leukemia cells via the phosphoinositide 3-kinase/Akt pathway. *Leukemia*. 2007; 21:1921-1930.
35. Schinke C, Giricz O, Li W, Shastri A, Gordon S, Barreryo L, Bhagat T, Bhattacharyya S, Ramachandra N, Bartenstein M, Pellagatti A, Boulwood J, Wickrema A, Yu Y, Will B, Wei S, et al. IL8-CXCR2 pathway inhibition as a therapeutic strategy against MDS and AML stem cells. *Blood*. 2015; 125:3144-3152.
36. Zeng Z, Shi YX, Samudio IJ, Wang RY, Ling X, Frolova O, Levis M, Rubin JB, Negrin RR, Estey EH, Konoplev S, Andreeff M and Konopleva M. Targeting the leukemia microenvironment by CXCR4 inhibition overcomes resistance to kinase inhibitors and chemotherapy in AML. *Blood*. 2009; 113:6215-6224.
37. Gallay N, Dos Santos C, Cuzin L, Bousquet M, Simmonet Gouy V, Chaussade C, Attal M, Payrastré B, Demur C and Recher C. The level of AKT phosphorylation on threonine 308 but not on serine 473 is associated with high-risk cytogenetics and predicts poor overall survival in acute myeloid leukaemia. *Leukemia*. 2009; 23:1029-1038.
38. Rushworth SA, Murray MY, Zaitseva L, Bowles KM and MacEwan DJ. Identification of Bruton's tyrosine kinase as a therapeutic target in acute myeloid leukemia. *Blood*. 2014; 123:1229-1238.
39. Rushworth SA, Zaitseva L, Murray MY, Shah NM, Bowles KM and MacEwan DJ. The high Nrf2 expression in human acute myeloid leukemia is driven by NF- $\kappa$ B and underlies its chemo-resistance. *Blood*. 2012; 120:5188-5198.