

CORRECTION

Correction: The Thyroid Status of Children and Adolescents in Fukushima Prefecture Examined during 20–30 Months after the Fukushima Nuclear Power Plant Disaster: A Cross-Sectional, Observational Study

Hajime Watanobe, Tomoyuki Furutani, Masahiko Nihei, Yu Sakuma, Rie Yanai, Miyuki Takahashi, Hideo Sato, Fumihiko Sagawa

There are errors in the caption for [Fig 1](#). Please see the complete, correct [Fig 1](#) caption here.



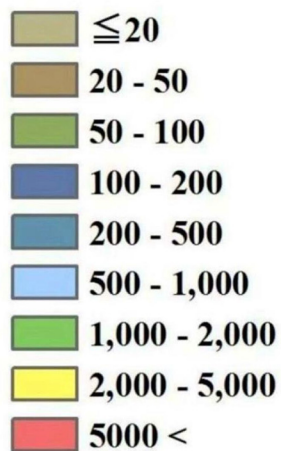
 OPEN ACCESS

Citation: Watanobe H, Furutani T, Nihei M, Sakuma Y, Yanai R, Takahashi M, et al. (2015) Correction: The Thyroid Status of Children and Adolescents in Fukushima Prefecture Examined during 20–30 Months after the Fukushima Nuclear Power Plant Disaster: A Cross-Sectional, Observational Study. PLoS ONE 10(7): e0133345. doi:10.1371/journal.pone.0133345

Published: July 15, 2015

Copyright: © 2015 Watanobe et al. This is an open access article distributed under the terms of the [Creative Commons Attribution License](#), which permits unrestricted use, distribution, and reproduction in any medium, provided the original author and source are credited.

^{131}I ground deposition (Bq/m^2)



FNPP1

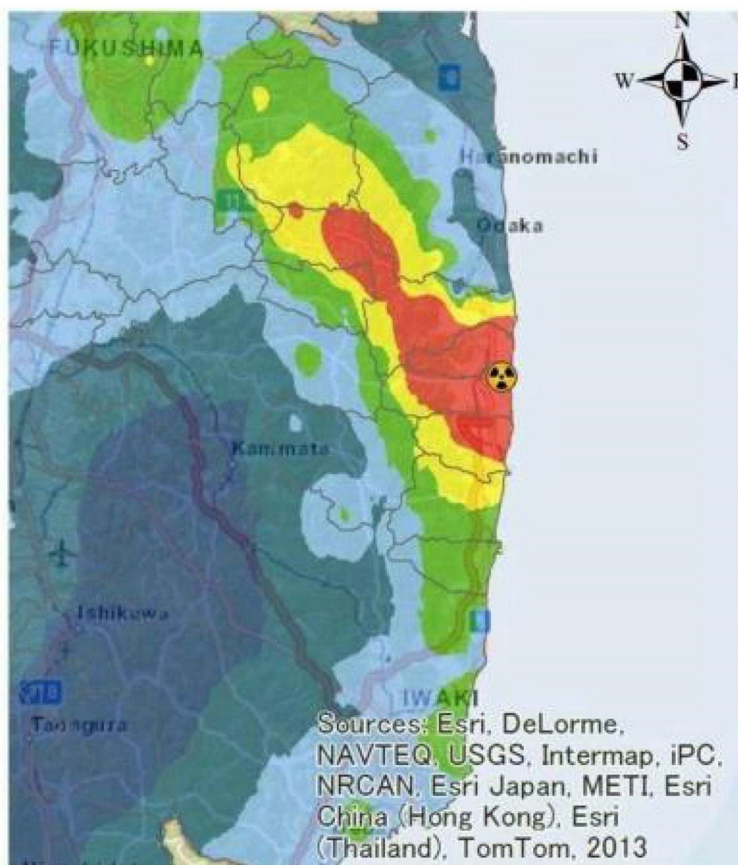
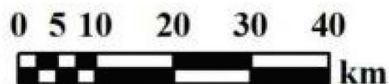


Fig 1. Estimated ^{131}I ground deposition across Fukushima Prefecture as of June 14th 2011. FNPP1: Fukushima Daiichi Nuclear Power Plant.

doi:10.1371/journal.pone.0133345.g001

Reference

1. Watanobe H, Furutani T, Nihei M, Sakuma Y, Yanai R, Takahashi M, et al. (2014) The Thyroid Status of Children and Adolescents in Fukushima Prefecture Examined during 20–30 Months after the Fukushima Nuclear Power Plant Disaster: A Cross-Sectional, Observational Study. PLoS ONE 9(12): e113804. doi:10.1371/journal.pone.0113804 PMID: 25474311