

RESEARCH

Open Access



# Investigation of optimal gestational weight gain based on the occurrence of adverse pregnancy outcomes for Chinese women: a prospective cohort study

Yin Sun<sup>1</sup>, Zhongzhou Shen<sup>2</sup>, Yongle Zhan<sup>2</sup>, Yawen Wang<sup>2</sup>, Shuai Ma<sup>2</sup>, Suhan Zhang<sup>1</sup>, Juntao Liu<sup>1</sup>, Sansan Wu<sup>2</sup>, Yahui Feng<sup>2</sup>, Yunli Chen<sup>2</sup>, Shuya Cai<sup>2</sup>, Yingjie Shi<sup>2</sup>, Liangkun Ma<sup>1\*</sup> and Yu Jiang<sup>2\*</sup>

## Abstract

**Objective:** To investigate recommendations for appropriate gestational weight gain (GWG) of Chinese females.

**Methods:** In total of 3,172 eligible women in the first trimester were recruited into the Chinese Pregnant Women Cohort Study (CPWCS) project. Pregnancy complications and outcomes were collated using the hospital medical records system. The method of occurrence of participants with adverse pregnancy outcomes (Occurrence Method) was conducted to calculate the recommended total GWG for each participant's pre-pregnancy BMI. Occurrence Method data were judged against the Institute of Medicine (IOM) and Japanese recommended criteria in terms of the total occurrence of adverse pregnancy outcomes of pregnant women with appropriate weight gain.

**Results:** The most frequent GWG was  $\geq 14$  kg and  $< 16$  kg (19.4%), followed by  $\geq 10$  kg and  $< 12$  kg (15.5%) and  $\geq 12$  kg and  $< 14$  kg (15.2%). The most frequently occurring adverse pregnancy outcomes were cesarean sections for underweight (30.0%), normal weight (40.4%), overweight (53.6%) and obese (53.7%) women. A large for gestational age (LGA) accounted for 18.0% of the overweight and 20.9% of the obesity group. Gestational diabetes mellitus (GDM) occurred in 16.9% of overweight and 23.1% of obese women. The recommended total GWG in a Chinese women population is  $\geq 8$  and  $< 12$  kg if underweight,  $\geq 12$  and  $< 14$  kg for normal weight,  $\geq 8.0$  and  $< 10.0$  kg if overweight, and  $< 8$  kg for women with obesity.

**Conclusions:** Current Chinese recommendations provide the optimal ranges of GWG to minimize the occurrence of undesirable pregnancy outcomes for each group of pre-pregnancy BMIs in a Chinese population.

**Trial registration:** Registered with ClinicalTrials (NCT03403543).

**Keywords:** Chinese pregnant women, Gestational weight gain, Recommendations, Pre-pregnancy BMI, Cohort study

## Background

Prenatal and postnatal care are important healthcare issues in most countries and how to improve mothers, fetus and child healthcare has become an important health goal worldwide [1]. Evidence suggests that gestational weight gain (GWG) is directly associated with mother and child health outcomes, and has a significant impact on pregnancy complications and outcomes [2,

\*Correspondence: maliangkun2019@163.com; jiangyu@pumc.edu.cn

<sup>1</sup> Department of Obstetrics and Gynecology, Peking Union Medical College Hospital, Chinese Academy of Medical Sciences & Peking Union Medical College, National Clinical Research Center for Obstetric & Gynecologic Diseases, No. 1 Shuaifuyuan Wangfujing, Dongcheng District, Beijing 100730, China

<sup>2</sup> School of Public Health, Chinese Academy of Medical Sciences and Peking Union Medical College, No. 9 Dongdan Santiao, Dongcheng District, Beijing 100730, China



3]. Meta-analysis of 39 cohorts of mothers showed that about 32% of large for gestational age (LGA) babies could be accounted for by too much GWG [4]. In contrast, women who did not gain adequate weight had higher probabilities of experiencing anemia [5], preterm birth (PB) [3], and delivering low birth weight (LBW) [6] and small for gestational age (SGA) infants [7], while participants who gained excessive weight had a greater risk of having gestational diabetes mellitus (GDM) [8], gestational hypertension (GH) [9], pre-eclampsia [5] and the need for caesarean sections [6].

However, studies indicated that the occurrence of inappropriate GWG is common worldwide. Shulman et al. found that 27.0% of pregnant women did not acquire accurate knowledge of weight gain recommendations and 30.0% did not have appropriate GWG during pregnancy in Atlanta [10]. Vivatkusol et al. pointed out that the prevalence of inappropriate GWG approached 61.7% in Thailand [5] and Shao and colleagues reported that the incidence of appropriate GWG was only 25.9% in Chinese women [11].

Although the Institute of Medicine (IOM) has published recommended criteria for appropriate weight gain during pregnancy [12], a recent US study concluded that 73% of pregnancies had GWG above 2009 IOM guidelines [13]. The recommendations cannot be readily applied in different countries mainly due to different ethnicities and diets [14]. Jiang et al. [15] pointed out that the IOM recommended GWG ranges were likely too great for pregnant Chinese women classified according to their BMIs. Thus, specific recommendations should be defined for particular ethnic populations having significantly different maternal anthropometry.

Recent studies [16–19] have concentrated on investigations into recommended GWG for Chinese women. The Obstetrics and Gynecology Branch of the Chinese Medical Association put forward recommended weight gains of 12.5 – 18.0 kg for underweight women, 11.5 – 16.0 kg for normal weight, 7.0 – 11.5 kg for women who are moderately overweight and 5.0 – 9.0 kg for obese women [20]. Wang et al. considered an average GWG of 16 kg to be optimal following research into infant birth weight [21]. However, there are several limitations to these studies. First, most of them were retrospective and lacked a reliable inference of causality. Second, most studies selected women undergoing a normal pregnancy to calculate the recommendations, so the findings may not be applicable in clinical practice due to selection bias and lack of sufficient rigorous information.

The Chinese Pregnant Women Cohort Study-Peking Union Medical College (CPWCS-PUMC) is a multi-center, prospective and ongoing cohort study, which was established to provide relevant scientific evidence

to guide the healthcare of pregnant Chinese women. In the present study, pregnant women from the CPWCS-PUMC in their first trimester were selected as subjects. We aim to investigate the proper recommended weight gain for Chinese women in different pre-pregnancy women allocated to according to their BMIs. The findings will be important for exploring the appropriate recommended GWG for a Chinese population, and should be of great help in developing suitable recommended criteria for clinical guidance in mainland China.

## Methods

### Setting and participants

This study was based on CPWCS-PUMC population research from 24 hospitals in 15 provinces of China from 2017 to 2018. Pregnant women in their first trimester were selected as subjects with the following inclusion criteria: (1) Chinese nationality (2)  $\geq 16$  years old; (3) 5–12 weeks' gestational age; (4) permanent residents in the study locations; (5) willing to sign written informed consent. Exclusion criteria were: (1) pregnancy > 12 gestational weeks; (2) no regular birth inspection; (3) floating population; (4) those who have contraindications to pregnancy such as gynecological tumors. The study protocol was registered at Clinical Trials (NCT03403543) and approved by the Ethics Review Committee of Peking Union Medical College Hospital (HS-1345). Written informed consent was obtained from all participants prior to enrollment.

### Recruitment

The baseline sample of CPWCS included 7,976 women at the first trimester recruited between 25<sup>th</sup> July 2017 and 24<sup>th</sup> July 2018. Data on 3,767 pregnant women with singleton pregnancies were collected through 31<sup>st</sup> December 2018. A total of 144 (3.8%) participants don't have information on prenatal visits. Of the remaining 3,623 participants, 451 women without weight or height data measured during the first prenatal examination or weight just before delivery were excluded from the analysis, leaving a total of 3,172 eligible women. The detailed recruitment process can be seen in our previous paper [22].

### Measurements

#### *BMI before pregnancy and GWG*

BMI ( $\text{kg}/\text{m}^2$ ) values before pregnancy were calculated by measuring the height and weight of pregnant women at their first prenatal examination (5–12 weeks' gestational age). Pre-pregnancy BMI was classified by closely following the "Adult Weight Determination" classification of the health industry standard (WS/T 428–2013) [23]. The categories were: underweight,  $\text{BMI} < 18.5 \text{ kg}/\text{m}^2$ ; normal weight  $18.5 \leq \text{BMI} < 24.0 \text{ kg}/\text{m}^2$ ; overweight

$24.0 \leq \text{BMI} < 28.0 \text{ kg/m}^2$ ; and obese  $\text{BMI} \geq 28.0 \text{ kg/m}^2$ . GWG was evaluated as the weight measured before delivery at the last prenatal examination subtracted from the weight measured at the initial prenatal examination and was obtained from the hospital electronic medical records system.

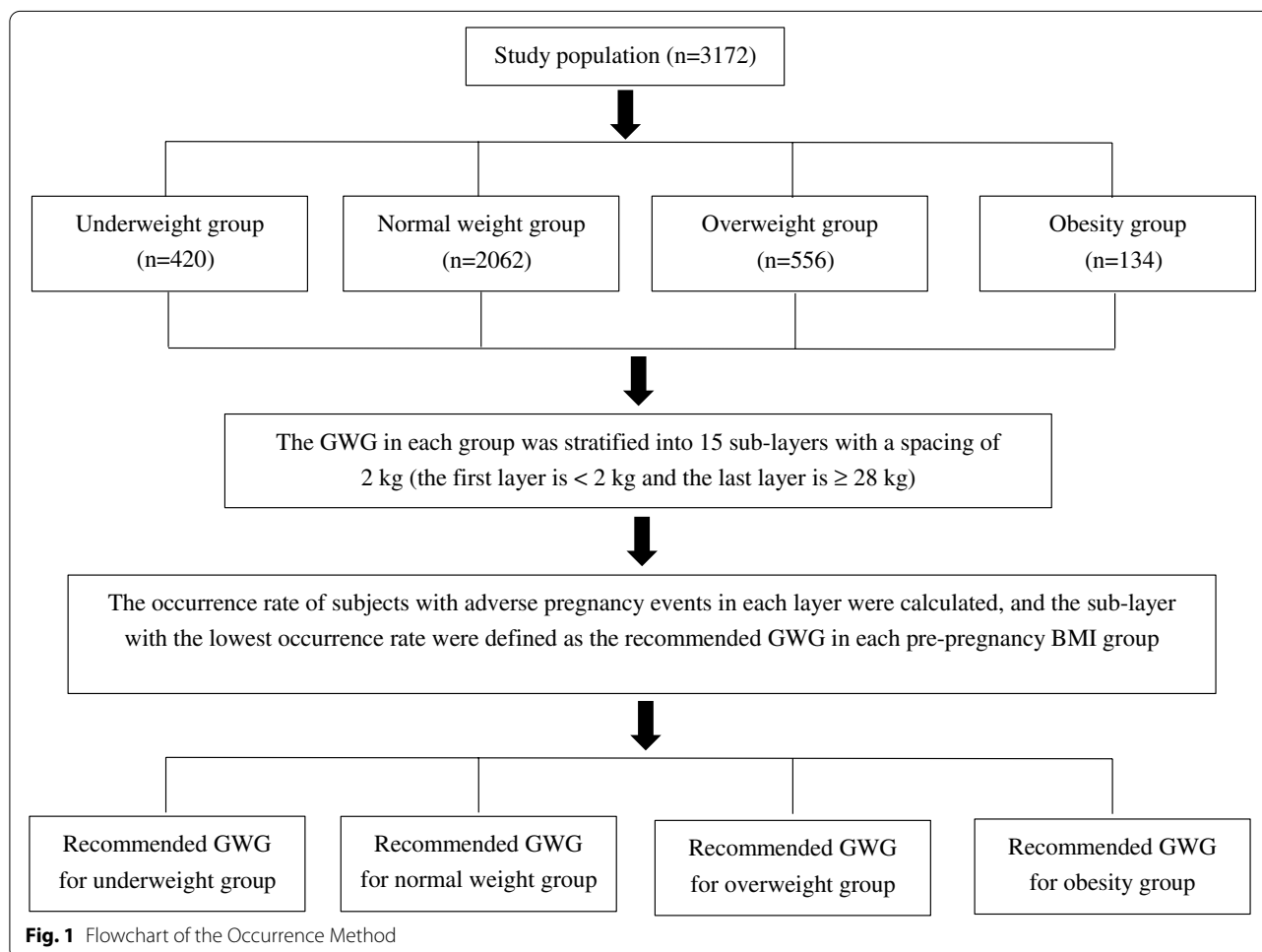
**Number of women with pregnancy outcomes that were adverse**

The method of occurrence of participants with adverse pregnancy outcomes (Occurrence Method) was conducted to calculate the recommended GWG for each pre-pregnancy BMI group. Ten adverse pregnancy outcomes were included: gestational anemia (GA), GDM, GH (including preeclampsia), premature rupture of membranes (PROM), PB, LBW, macrosomia (MAC), SGA, LGA, and cesarean section (CS). As shown in Fig. 1, first, the women were assigned to 1 of 4 groups according to their BMI classification before becoming pregnant. Second, the GWG in each group was stratified into 15 sublayers with a spacing of 2 kg, and the occurrence of

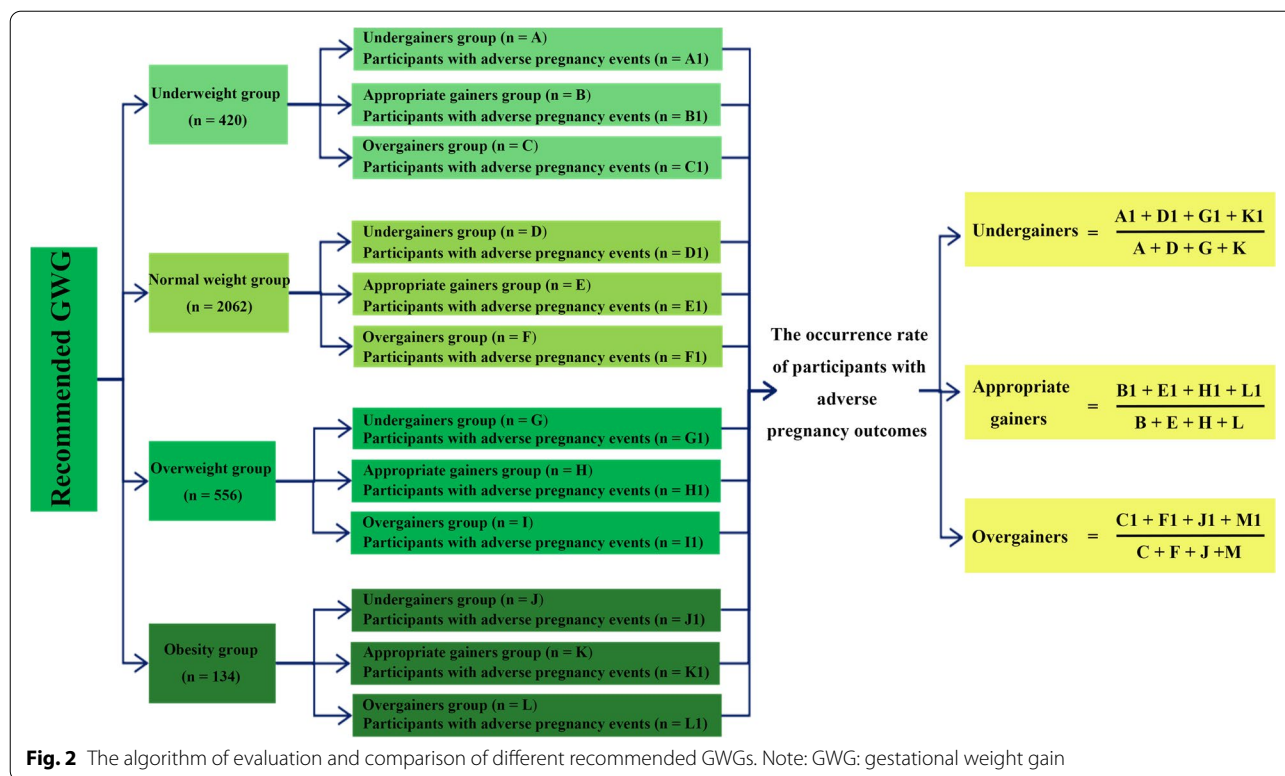
participants with adverse pregnancy outcomes in each layer was determined. Finally, the sublayer with the lowest occurrence of adverse outcomes was defined as the recommended GWG for each BMI group.

**Evaluation of different recommendation criteria for GWG**

In this study, we included three recommendation criteria for evaluation, namely IOM recommendations [24], Japan recommendations [25] and the China (Occurrence Method) recommendations of the present study. The United States IOM advises a GWG of 12.5 – 18 kg for women who are underweight, 11.5 – 16 kg for normal weight, 7 – 11.5 kg for overweight and 5 – 9 kg for obese women [26]. Japan defined GWG recommendations in 2001 [27] thus: 9 – 12 kg for women who are underweight, 7 – 12 kg for women of normal weight,  $\leq 7$  kg for overweight women and  $\leq 5$  kg for obese women. Women who put on less weight than recommended, the recommended weight gain, or more than the recommended weight gain were assigned to groups of undergainers, appropriate gainers and overgainers, respectively. In each



**Fig. 1** Flowchart of the Occurrence Method



category, pregnant women with different pre-pregnancy BMIs were pooled to calculate the overall occurrence of women with adverse pregnancy outcomes. By comparing the total incidence of pregnancy outcomes that were adverse in women who had appropriate weight gains, the lowest recommended value of the total occurrence of adverse pregnancy outcomes was determined as the appropriate recommended value of GWG in our study (Fig. 2).

**Definitions of adverse pregnancy outcomes**

A diagnosis of GDM was made following the guidelines published by the American Diabetes Association in 2014 [28]. All the women were given an oral glucose (75 g) tolerance test (24 – 28 weeks gestation), and GDM was diagnosed if any of the following values was greater than or equal to: fasting glucose 5.1 mmol/L, glucose 10.0 mmol/L at 1 h, glucose 8.5 mmol/L at 2 h. According to the 8<sup>th</sup> edition of *Obstetrics and Gynecology* [29] GH refers to systolic  $\geq 140$  mmHg or diastolic  $\geq 90$  mmHg (systolic  $\geq 140$  mmHg or diastolic  $\geq 90$  mmHg when reexamined at 4-h interval) after 20 weeks of gestation. 28 weeks  $\leq$  gestational weeks < 37 weeks was considered as PB. Peripheral blood hemoglobin < 110 g/L and a hematocrit < 0.33 during pregnancy was defined as gestational anemia (GA). PROM was suspected based on symptoms and speculum examination and might have

been supported by testing the vaginal fluid or by ultrasound [30]. Maternal adverse outcomes including CS, GA, PROM, GDM, GH and PB were collected by physicians at the 6-week postpartum follow-ups.

Neonates, with birth weights < 2,500 g were considered as LBWs and a weight  $\geq 4,000$  g as MAC. Neonates weights < the 10<sup>th</sup> percentile and/or length  $\geq 2$  standard deviations below the mean for their gestational age were classified as SGA, while birth weights > the 90<sup>th</sup> percentile and/or length  $\geq 2$  standard deviations > the mean for their gestational age as LGAs. Neonatal adverse outcomes including LBW, MAC, SGA and LGA were collected during physicians’ home visits to the mother’s home at the sixth week postpartum.

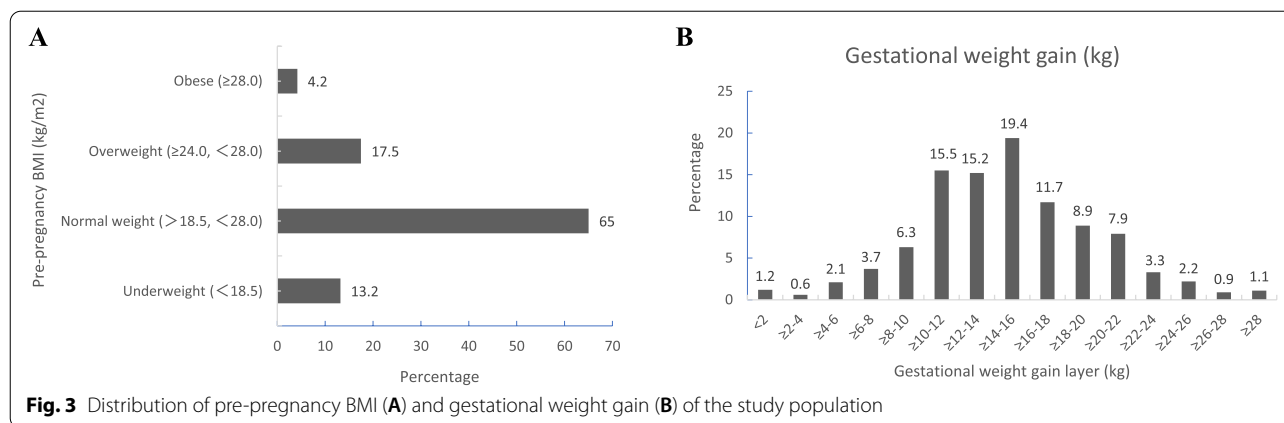
**Statistical analysis**

Frequencies and percentages were calculated for categorical data. Data were collated and analyzed using Microsoft Office Excel 2013 and SPSS ver. 25.

**Results**

**Pre-pregnancy BMIs and GWGs**

Analysis of BMIs in pre-pregnant women and 15 GWG layer analysis of subjects revealed that pregnant women with a normal pre-pregnancy BMI accounted for the majority (65.01%), followed by overweight and obesity (21.75%) and low weight (13.24%) (Fig. 3A). The



**Fig. 3** Distribution of pre-pregnancy BMI (A) and gestational weight gain (B) of the study population

**Table 1** Frequency (n, %) of adverse pregnancy outcomes in different GWG sublayers in the underweight group

	Total subjects per sublayer	PB n (%)	LBW n (%)	MAC n (%)	SGA n (%)	LGA n (%)	CS n (%)	GA n (%)	PROM n (%)	GDM n (%)	GH n (%)
<2	1 (0.2)	1 (100)	1 (100)	0 (0)	0 (0)	0 (0)	0 (0)	0 (0)	0 (0)	0 (0)	0 (0)
≥ 2-4	1 (0.2)	0 (0)	0 (0)	0 (0)	0 (0)	0 (0)	0 (0)	0 (0)	0 (0)	0 (0)	0 (0)
≥ 4-6	5 (1.2)	1 (20.0)	1 (20.0)	0 (0)	0 (0)	0 (0)	2 (40.0)	1 (20.0)	1 (20.0)	1 (20)	0 (0)
≥ 6-8	13 (3.1)	3 (23.1)	3 (23.1)	0 (0)	2 (15.4)	0 (0)	5 (38.5)	2 (15.4)	3 (23.1)	3 (23.1)	0 (0)
≥ 8-10	21 (5.0)	3 (14.3)	2 (9.5)	0 (0)	2 (9.5)	0 (0)	6 (28.6)	0 (0)	1 (4.8)	1 (4.8)	0 (0)
≥ 10-12	50 (11.9)	2 (4.0)	1 (2.0)	0 (0)	4 (8.0)	3 (6)	10 (20.0)	5 (10.0)	5 (10.0)	4 (8.0)	0 (0)
≥ 12-14	58 (13.8)	3 (5.2)	3 (5.2)	1 (1.7)	5 (8.6)	4 (6.9)	13 (22.4)	4 (6.9)	7 (12.1)	6 (10.3)	0 (0)
≥ 14-16	82 (19.6)	2 (2.4)	5 (6.0)	4 (4.8)	9 (10.8)	4 (4.8)	24 (28.9)	8 (9.6)	9 (10.8)	7 (8.4)	1 (1.2)
≥ 16-18	64 (15.3)	6 (9.4)	3 (4.7)	0 (0)	2 (3.1)	1 (1.6)	23 (35.9)	13 (20.3)	8 (12.5)	4 (6.3)	3 (4.7)
≥ 18-20	42 (10.0)	1 (2.4)	0 (0)	4 (9.5)	1 (2.4)	6 (14.3)	15 (35.7)	8 (19.0)	3 (7.1)	1 (2.4)	1 (2.4)
≥ 20-22	36 (8.6)	0 (0)	0 (0)	3 (8.3)	3 (8.3)	3 (8.3)	13 (36.1)	4 (11.1)	2 (5.6)	2 (5.6)	0 (0)
≥ 22-24	20 (4.8)	1 (5.0)	2 (10.0)	2 (10.0)	4 (20.0)	2 (10.0)	6 (30.0)	1 (5.0)	4 (20.0)	2 (10.0)	0 (0)
≥ 24-26	14 (3.3)	0 (0)	0 (0)	0 (0)	0 (0)	0 (0)	5 (35.7)	2 (14.3)	3 (21.4)	0 (0)	0 (0)
≥ 26-28	5 (1.2)	0 (0)	0 (0)	0 (0)	0 (0)	0 (0)	2 (40.0)	0 (0)	0 (0)	1 (20.0)	0 (0)
≥ 28	7 (1.7)	0 (0)	0 (0)	2 (28.6)	0 (0)	2 (28.6)	2 (28.6)	2 (28.6)	1 (14.3)	1 (14.3)	0 (0)
<b>Total</b>	<b>420</b>	<b>23 (5.5)</b>	<b>21 (5.0)</b>	<b>16 (3.8)</b>	<b>32 (7.6)</b>	<b>25 (6.0)</b>	<b>126 (30.0)</b>	<b>50 (11.9)</b>	<b>47 (11.2)</b>	<b>33 (7.9)</b>	<b>5 (1.2)</b>

CS Cesarean section, GA Gestational anemia, GDM Gestational diabetes mellitus, GH Gestational hypertension, LBW Low birth weight, LGA Large for gestational age, MAC Macrosomia, PB Preterm birth, PROM Premature rupture of membranes, SGA Small for gestational age

greatest gain in weight during pregnancy was  $\geq 14.0$  kg and  $< 16.0$  kg, accounting for 19.4%, followed by  $\geq 10.0$  kg and  $< 12.0$  kg (15.5%) and  $\geq 12.0$  kg and  $< 14.0$  kg (15.2%) (Fig. 3B).

**Frequency distribution of adverse outcomes**

The frequency of adverse pregnancy outcomes in different GWG sub-layers among the four pre-pregnant BMI groups is shown in Tables 1, 2, 3 and 4. The number of low-weight (82, 19.6%) and normal-weight (424, 20.6%) pregnant women who gained  $\geq 14$  kg and  $< 16$  kg

were the largest, and for overweight (94, 17.0%) and obese (30, 22.4%) women, a GWG  $\geq 10$  kg and  $< 12$  kg was most common. In the four pre-pregnancy BMI groups, the most frequently occurring adverse pregnancy outcomes were CS (30.0, 40.4, 53.6 and 53.7%, respectively). In the overweight group, the three most common adverse outcomes, except for CS, were LGA (18.0%), GDM (16.9%) and PROM (16.0%). In the obesity group, the three most common adverse outcomes, except for CS, were GDM (23.1%), LGA (20.9%) and MAC (16.4%).

**Table 2** Frequency (n, %) of adverse pregnancy outcomes in different GWG sublayers in the normal weight group

	Total subjects in sublayers	PB n (%)	LBW n (%)	MAC n (%)	SGA n (%)	LGA n (%)	CS n (%)	GA n (%)	PROM n (%)	GDM n (%)	GH n (%)
< 2	14 (0.7)	0 (0)	2 (14.3)	0 (0)	5 (35.7)	0 (0)	7 (50.0)	2 (14.3)	2 (14.3)	1 (7.1)	0 (0)
≥ 2–4	10 (0.5)	1 (10.0)	1 (10.0)	1 (10.0)	1 (10.0)	2 (20.0)	3 (30.0)	0 (0)	0 (0)	0 (0)	0 (0)
≥ 4–6	38 (1.8)	5 (13.2)	1 (2.6)	0 (0)	4 (10.5)	3 (7.9)	12 (31.6)	4 (10.5)	5 (13.2)	10 (26.3)	0 (0)
≥ 6–8	55 (2.7)	4 (7.3)	4 (7.3)	1 (1.8)	7 (12.7)	3 (5.5)	25 (45.5)	10 (18.2)	3 (5.5)	6 (10.9)	1 (1.8)
≥ 8–10	123 (6.0)	7 (5.7)	6 (4.9)	6 (4.9)	4 (3.3)	8 (6.5)	51 (41.5)	18 (14.6)	19 (15.4)	25 (20.3)	2 (1.6)
≥ 10–12	316 (15.3)	25 (7.9)	17 (5.4)	11 (3.5)	23 (7.3)	18 (5.7)	101 (31.9)	48 (15.1)	48 (15.1)	44 (13.9)	6 (1.9)
≥ 12–14	328 (15.9)	12 (3.7)	12 (3.7)	15 (4.6)	25 (7.6)	26 (7.9)	120 (36.6)	46 (14.0)	41 (12.5)	30 (9.1)	6 (1.8)
≥ 14–16	424 (20.6)	20 (4.7)	15 (3.5)	24 (5.7)	23 (5.4)	32 (7.5)	188 (44.3)	63 (14.9)	43 (10.1)	37 (8.7)	7 (1.7)
≥ 16–18	240 (11.7)	4 (1.7)	5 (2.1)	14 (5.8)	16 (6.7)	22 (9.2)	90 (37.5)	44 (18.3)	26 (10.8)	19 (7.9)	6 (2.5)
≥ 18–20	191 (9.3)	4 (2.1)	6 (3.1)	10 (5.2)	9 (4.7)	17 (8.9)	75 (39.3)	14 (7.3)	15 (7.9)	21 (11.0)	5 (2.6)
≥ 20–22	163 (7.9)	3 (1.8)	3 (1.8)	13 (7.9)	7 (4.3)	23 (14.0)	77 (47.0)	25 (15.2)	31 (18.9)	11 (6.7)	4 (2.4)
≥ 22–24	68 (3.3)	2 (2.9)	1 (1.4)	10 (14.5)	1 (1.4)	14 (20.3)	40 (58.0)	9 (13.0)	6 (8.7)	4 (5.8)	2 (2.9)
≥ 24–26	49 (2.4)	1 (2.0)	0 (0)	8 (16.3)	0 (0)	10 (20.4)	23 (46.9)	10 (20.4)	5 (10.2)	1 (2.0)	2 (4.1)
≥ 26–28	19 (0.9)	0 (0)	0 (0)	1 (5.3)	1 (5.3)	1 (5.3)	7 (36.8)	1 (5.3)	4 (21.1)	4 (21.1)	0 (0)
≥ 28	21 (1.0)	0 (0)	1 (4.8)	2 (9.5)	2 (9.5)	2 (9.5)	14 (66.7)	2 (9.5)	2 (9.5)	1 (4.8)	1 (4.8)
<b>Total</b>	<b>2062</b>	<b>88 (4.3)</b>	<b>74 (3.6)</b>	<b>116 (5.6)</b>	<b>128 (6.2)</b>	<b>181 (8.8)</b>	<b>833 (40.4)</b>	<b>296 (14.4)</b>	<b>250 (12.1)</b>	<b>214 (10.4)</b>	<b>42 (2.0)</b>

CS Cesarean section, GA Gestational anemia, GDM Gestational diabetes mellitus, GH Gestational hypertension, LBW Low birth weight, LGA Large for gestational age, MAC Macrosomia, PB Preterm birth, PROM Premature rupture of membranes, SGA Small for gestational age

**Table 3** Frequency (n, %) of adverse pregnancy outcomes in different GWG sub-layers in the overweight group

	Total subjects in sublayers	PB n (%)	LBW n (%)	MAC n (%)	SGA n (%)	LGA n (%)	CS n (%)	GA n (%)	PROM n (%)	GDM n (%)	GH n (%)
< 2	15 (2.7)	0 (0)	0 (0)	2 (13.3)	1 (6.7)	2 (13.3)	4 (26.7)	1 (6.7)	1 (6.7)	2 (13.3)	0 (0)
≥ 2–4	5 (0.9)	1 (20.0)	1 (20.0)	0 (0)	0 (0)	0 (0)	4 (80.0)	0 (0)	1 (20.0)	1 (20.0)	1 (20.0)
≥ 4–6	21 (3.8)	5 (23.8)	2 (9.5)	1 (4.8)	1 (4.8)	1 (4.8)	10 (47.6)	3 (14.3)	6 (28.6)	8 (38.1)	2 (9.5)
≥ 6–8	33 (6.0)	2 (6.1)	2 (6.1)	1 (3.0)	4 (12.1)	2 (6.1)	17 (51.5)	5 (15.2)	4 (12.1)	9 (27.3)	0 (0)
≥ 8–10	41 (7.4)	1 (2.4)	1 (2.4)	1 (2.4)	3 (7.1)	3 (7.1)	16 (38.1)	5 (11.9)	7 (16.7)	8 (19.0)	2 (4.8)
≥ 10–12	94 (17.0)	4 (4.3)	1 (1.1)	11 (11.7)	1 (1.1)	15 (16.0)	53 (56.4)	17 (18.1)	9 (9.6)	15 (16.0)	2 (2.1)
≥ 12–14	82 (14.8)	5 (6.1)	3 (3.7)	14 (17.1)	3 (3.7)	17 (20.7)	46 (56.1)	12 (14.6)	11 (13.4)	10 (12.2)	3 (3.7)
≥ 14–16	92 (16.6)	6 (6.5)	1 (1.1)	8 (8.6)	3 (3.2)	16 (17.2)	54 (58.1)	9 (9.7)	18 (19.4)	13 (14.0)	3 (3.2)
≥ 16–18	55 (9.9)	3 (5.5)	1 (1.8)	8 (14.5)	0 (0)	11 (20.0)	27 (49.1)	9 (16.4)	9 (16.4)	8 (14.5)	2 (3.6)
≥ 18–20	40 (7.2)	3 (7.5)	1 (2.5)	7 (17.5)	1 (2.5)	9 (22.5)	21 (52.5)	6 (15.0)	7 (17.5)	7 (17.5)	2 (5.0)
≥ 20–22	48 (8.7)	3 (6.3)	0 (0)	9 (18.8)	1 (2.1)	15 (31.3)	30 (62.5)	10 (20.8)	12 (25.0)	12 (25.0)	2 (4.2)
≥ 22–24	13 (2.3)	0 (0)	1 (7.7)	2 (15.4)	2 (15.4)	3 (23.1)	8 (61.5)	1 (7.7)	1 (7.7)	0 (0)	1 (7.7)
≥ 24–26	6 (1.1)	0 (0)	0 (0)	2 (33.3)	0 (0)	2 (33.3)	4 (66.7)	2 (33.3)	1 (16.7)	1 (16.7)	2 (33.3)
≥ 26–28	3 (0.5)	0 (0)	0 (0)	2 (66.7)	0 (0)	2 (66.7)	2 (66.7)	2 (66.7)	0 (0)	0 (0)	0 (0)
≥ 28	6 (1.1)	0 (0)	0 (0)	1 (16.7)	0 (0)	2 (33.3)	2 (33.3)	0 (0)	2 (33.3)	0 (0)	0 (0)
<b>Total</b>	<b>556</b>	<b>33 (6.0)</b>	<b>14 (2.5)</b>	<b>69 (12.4)</b>	<b>20 (3.6)</b>	<b>100 (18.0)</b>	<b>298 (53.6)</b>	<b>82 (14.7)</b>	<b>89 (16.0)</b>	<b>94 (16.9)</b>	<b>22 (4.0)</b>

CS Cesarean section, GA Gestational anemia, GDM Gestational diabetes mellitus, GH Gestational hypertension, LBW Low birth weight, LGA Large for gestational age, MAC Macrosomia, PB Preterm birth, PROM Premature rupture of membranes, SGA Small for gestational age

### Recommended GWG for the 4 pre-pregnancy BMI groups

Considering the number of pregnant women in each sub-layer of GWG and the lowest occurrence rate of adverse pregnancy outcomes, we made the recommended value of gestational weight gain for the four

pre-pregnancy BMI groups. The recommended GWG for underweight pregnant women is  $\geq 8$  kg and  $< 12$  kg. The recommended GWG for normal weight pregnant women is  $\geq 12$  kg and  $< 14$  kg. The recommended GWG for overweight pregnant women is  $\geq 8$  kg and  $< 10$  kg.

**Table 4** The frequency (n, %) of adverse pregnancy outcomes in different GWG sublayers in the obesity group

	Total Subjects in sub-layers	PB n (%)	LBW n (%)	MAC n (%)	SGA n (%)	LGA n (%)	CS n (%)	GA n (%)	PROM n (%)	GDM n (%)	GH n (%)
< 2	9 (6.7)	0 (0)	0 (0)	2 (22.2)	0 (0)	2 (22.2)	4 (44.4)	1 (11.1)	0 (0)	1 (11.1)	0 (0)
≥ 2–4	3 (2.2)	0 (0)	0 (0)	0 (0)	0 (0)	0 (0)	1 (33.3)	0 (0)	0 (0)	2 (66.7)	0 (0)
≥ 4–6	3 (2.2)	0 (0)	0 (0)	0 (0)	0 (0)	0 (0)	1 (33.3)	1 (33.3)	0 (0)	0 (0)	0 (0)
≥ 6–8	15 (11.2)	1 (6.7)	0 (0)	3 (20)	0 (0)	4 (26.7)	6 (40.0)	1 (6.7)	1 (6.7)	4 (26.7)	0 (0)
≥ 8–10	15 (11.2)	0 (0)	0 (0)	2 (13.3)	1 (6.7)	2 (13.3)	7 (46.7)	0 (0)	1 (6.7)	6 (40)	1 (6.7)
≥ 10–12	30 (22.4)	2 (6.7)	1 (3.3)	2 (6.7)	0 (0)	5 (16.7)	16 (53.3)	5 (16.7)	3 (10.0)	3 (10)	8 (26.7)
≥ 12–14	15 (11.2)	1 (6.7)	1 (6.7)	3 (20)	1 (6.7)	4 (26.7)	7 (46.7)	1 (6.7)	3 (20.0)	4 (26.7)	4 (26.7)
≥ 14–16	16 (11.9)	1 (6.3)	0 (0)	4 (25.0)	0 (0)	5 (31.3)	10 (62.5)	3 (18.8)	2 (12.5)	7 (43.8)	0 (0)
≥ 16–18	11 (8.2)	2 (18.2)	1 (9.1)	2 (18.2)	0 (0)	3 (27.3)	8 (72.7)	2 (18.2)	1 (9.1)	0 (0)	1 (9.1)
≥ 18–20	9 (6.7)	0 (0)	0 (0)	2 (22.2)	0 (0)	1 (11.1)	5 (55.6)	1 (11.1)	0 (0)	3 (33.3)	0 (0)
≥ 20–22	3 (2.2)	0 (0)	0 (0)	0 (0)	0 (0)	0 (0)	2 (66.7)	0 (0)	0 (0)	1 (33.3)	0 (0)
≥ 22–24	2 (1.5)	0 (0)	0 (0)	1 (50)	0 (0)	1 (50)	2 (100)	0 (0)	0 (0)	0 (0)	1 (50.0)
≥ 24–26	2 (1.5)	0 (0)	0 (0)	0 (0)	0 (0)	0 (0)	2 (100)	0 (0)	1 (50)	0 (0)	0 (0)
≥ 26–28	0 (0)	0 (0)	0 (0)	0 (0)	0 (0)	0 (0)	0 (0)	0 (0)	0 (0)	0 (0)	0 (0)
≥ 28	1 (0.7)	0 (0)	0 (0)	1 (100)	0 (0)	1 (100)	1 (100)	0 (0)	0 (0)	0 (0)	0 (0)
<b>Total</b>	<b>134</b>	<b>7 (5.2)</b>	<b>3 (2.2)</b>	<b>22 (16.4)</b>	<b>2 (1.5)</b>	<b>28 (20.9)</b>	<b>72 (53.7)</b>	<b>15 (11.2)</b>	<b>12 (9.0)</b>	<b>31 (23.1)</b>	<b>15 (11.2)</b>

CS Cesarean section, GA Gestational anemia, GDM Gestational diabetes mellitus, GH Gestational hypertension, LBW Low birth weight, LGA Large for gestational age, MAC Macrosomia, PB Preterm birth, PROM Premature rupture of membranes, SGA Small for gestational age

**Table 5** Occurrence rate (%) of participants with adverse pregnancy outcomes in each sublayer among the 4 pre-pregnancy BMI groups

Subgroup of GWG (kg)	Number of participants with adverse pregnancy/total sub-layer participants (occurrence rate (%))			
	Underweight	Normal weight	Overweight	Obesity
< 2	1/1 (100)	12/14 (85.7)	7/15 (46.7)	6/9 (66.7)
≥ 2–4	0/1 (0)	5/10 (50.0)	4/5 (80)	2/3 (66.7)
≥ 4–6	4/5 (80)	25/38 (65.8)	17/21 (81)	2/3 (66.7)
≥ 6–8	11/13 (84.6)	41/55 (74.5)	28/33 (84.8)	10/15 (66.7)
≥ 8–10	9/21 (42.9)	83/123 (67.5)	29/41 (69)	12/15 (80)
≥ 10–12	24/50 (48)	205/316 (64.7)	69/94 (73.4)	22/30 (73.3)
≥ 12–14	31/58 (53.4)	196/328 (59.8)	63/82 (76.8)	11/15 (73.3)
≥ 14–16	42/82 (50.6)	278/424 (65.6)	68/92 (73.1)	14/16 (87.5)
≥ 16–18	38/64 (59.4)	155/240 (64.6)	41/55 (74.5)	10/11 (90.9)
≥ 18–20	24/42 (57.1)	123/191 (64.4)	34/40 (85)	5/9 (55.6)
≥ 20–22	24/36 (66.7)	114/163 (69.5)	42/48 (87.5)	3/3 (100)
≥ 22–24	11/20 (55)	48/68 (69.6)	10/13 (76.9)	2/2 (100)
≥ 24–26	7/14 (50)	33/49 (67.3)	5/6 (83.3)	2/2 (100)
≥ 26–28	2/5 (40)	13/19 (68.4)	3/3 (100)	0/0 (0)
≥ 28	4/7 (57.1)	15/21 (71.4)	4/6 (66.7)	1/1 (100)

GWG Gestational weight gain

The recommended GWG for obese women is < 8 kg (Table 5).

#### Comparison of overall occurrence rates of pregnant women with adverse pregnancy outcomes under the three recommended GWG criteria

The different recommended GWG criteria are presented in Supplementary Table 1. GWG was categorized into undergainers, appropriate gainers and overgainers in each pre-pregnancy BMI group according to the three recommended criteria (IOM, Japan and China (Occurrence Method)). The occurrence rate of overall and each adverse pregnant outcome among undergainers, appropriate gainers and undergainers groups in each GWG recommended criterion are shown in Table 6. In the appropriate gainers group, the occurrence rate of participants with overall adverse pregnant outcomes was the lowest according to the China (Occurrence Method) recommendation (60.8%), compared with IOM recommendation (63.4%) and Japan recommendation (64.5%). Therefore, the Occurrence Method criteria were selected as the recommendations for total GWG in Chinese women in terms of the lowest occurrence rate of adverse pregnancy outcomes.

#### Discussion

The present cohort study of 3,172 women indicated that the recommendations for total gestational weight gain in a Chinese population are ≥ 8 kg and < 12 kg for

**Table 6** Occurrence rates of pregnant women with adverse pregnancy outcomes among the three recommendations

Occurrence rates of pregnant women with adverse pregnancy outcomes n (%)	China (Occurrence Method)			Japan			IOM		
	Undergainers (n = 651)	Appropriate gainers (n = 706)	Overgainers (n = 1815)	Undergainers (n = 116)	Appropriate gainers (n = 791)	Overgainers (n = 2265)	Undergainers (n = 733)	Appropriate gainers (n = 1262)	Overgainers (n = 1177)
<b>Total</b>	443 (68.1)	429 (60.8)	1232 (67.9)	80 (69.0)	510 (64.5)	1514 (66.8)	478 (65.2)	800 (63.4)	826 (70.2)
<b>PB</b>	55 (8.5)	33 (4.7)	63 (3.5)	13 (11.2)	57 (7.2)	81 (3.6)	60 (8.2)	52 (4.1)	128 (10.1)
<b>LBW</b>	41 (6.3)	26 (3.7)	45 (2.5)	12 (10.3)	41 (5.2)	59 (2.6)	44 (6.0)	43 (3.4)	26 (2.1)
<b>MAC</b>	23 (3.5)	36 (5.1)	164 (9.0)	1 (0.9)	29 (3.7)	193 (8.5)	24 (3.3)	68 (5.4)	39 (3.3)
<b>SGA</b>	52 (8.0)	44 (6.2)	86 (4.7)	16 (13.8)	55 (7.0)	111 (4.9)	57 (7.8)	77 (6.1)	25 (2.1)
<b>LGA</b>	39 (6.0)	55 (7.8)	240 (13.2)	5 (4.3)	50 (6.3)	279 (12.3)	43 (5.9)	102 (8.1)	131 (11.1)
<b>CS</b>	241 (37.0)	265 (37.5)	823 (45.3)	45 (38.8)	285 (36.0)	999 (44.1)	260 (35.5)	502 (39.8)	48 (4.1)
<b>GA</b>	94 (14.4)	97 (13.7)	252 (13.9)	13 (11.2)	112 (14.2)	318 (14.0)	99 (13.5)	186 (14.7)	189 (16.1)
<b>PROM</b>	93 (14.3)	84 (11.9)	221 (12.2)	13 (11.2)	108 (13.7)	277 (12.2)	101 (13.8)	140 (11.1)	567 (48.2)
<b>GDM</b>	110 (16.9)	72 (10.2)	190 (10.5)	17 (14.7)	116 (14.7)	239 (10.6)	117 (16.0)	52 (4.1)	158 (13.4)
<b>GH</b>	12 (1.8)	13 (1.8)	59 (3.3)	1 (0.9)	14 (1.8)	69 (3.0)	12 (1.6)	43 (3.4)	157 (13.3)

CS Cesarean section, GA Gestational anemia, GDM Gestational diabetes mellitus, GH Gestational hypertension, IOM Institute of Medicine, LBW Low birth weight, LGA Large for gestational age, MAC Macrosomia, PB Preterm birth, PROM Premature rupture of membranes, SGA Small for gestational age

underweight women,  $\geq 12$  kg and  $< 14$  kg for women in the normal weight range,  $\geq 8$  kg and  $< 10$  kg for women overweight and  $< 8$  kg for obese women. The findings of the present study provide higher-level evidence for obstetricians to make GWG suggestions to pregnant women with different pre-pregnancy BMIs.

At present, most studies [16, 21] in China use the percentile or quartile method to calculate the suitable recommended value for weight gain during pregnancy, and the percentile method requires that all the subjects should be normal people. Although the recommended GWG calculated by taking an absolutely perfect normal population as research subjects has significance in mathematical statistics, it may not be applicable in guiding clinical practice. Health providers probably want to know more about the occurrence of adverse pregnancy outcomes when GWG reaches a certain range to guide the healthcare of pregnant women in the perinatal period. In this study, the Occurrence Method was used to analyze the incidence of adverse pregnancy outcomes in each weight-gain layer. Through comparative analysis, the weight-gain layer with the least rate of occurrence of adverse outcomes for pregnancy was determined as the appropriate recommended value for pregnant women's weight gain in a specific BMI group. Therefore, this method is more in line with the evidence-based needs of obstetricians and gynecologists when making clinical decisions.

It is reasonable to categorize recommended GWGs according to pre-pregnancy BMI values. Research has found that a low pre-pregnancy BMI is closely linked

with probability of developing anemia during pregnancy [31], which is consistent with the findings of the present study (the occurrence of GA reached 12% in underweight subjects). Furthermore, maternal anemia was proven to be linked to poor birth outcome risks in a recent cohort study in India [32], and the risk increased if anemia and underweight were present simultaneously. About 8% of SGA and 6% of LGA were also observed in the underweight group in our study. An individual pregnant patient data meta-analysis suggested that about 24% of complications were attributable to the mother being overweight pre-pregnancy or obese [4]. A recent meta-analysis found a significant correlation between excessive GWG during the first trimester and the risk of developing GDM [33]. In our study, the occurrence of GDM reached 17 and 23% in overweight and obese subjects, respectively. In general, women with GDM had an increased risk of delivering LGA infants [34, 35], and the occurrence of LGA reached 18 and 21% in our overweight and obese subjects, respectively. Therefore, it is recommended that women with a low BMI before becoming pregnant should strive to put on extra weight, while the opposite applies to women with high pre-pregnancy BMIs. China was reported to have the highest CS rate (46.2%) in the World Health Organization Global Survey [36]. It has also been reported that a pre-pregnancy overweight/obesity state was associated with an elevated risk of requiring cesarean delivery [37–40]. In our study, the CS rate reached as high as 54% in the overweight/obesity group. Excessive weight gain during pregnancy caused increased fat accumulation in the birth canal. The birth canal with



an increased resistance and decreased muscle contraction could easily induce abnormal labour and dystocia [41], which will lead to the need for a caesarean delivery.

To guide clinical practice, the IOM published guidelines for appropriate weight gain during pregnancy in 2009 [12]. Since these guidelines were developed based on populations in developed countries, they may not be suitable for Chinese women due to different races, regions, physiques and diets and so forth [42]. Our study also indicated higher occurrence of adverse pregnancy outcomes in appropriate weight gain groups, according to IOM criteria. Once again, the findings proved the necessity of carrying out this prospective cohort study in order to provide theoretical reasons for the formulation and improvement of the recommended GWG for Chinese women.

The present study has the following limitations which should be taken into account. First, the sample size may still not be large enough for more stratification, such as age, and may lack power for a robust assessment. Second, it is regrettable that we were not able to examine long-term outcomes of GWG, e.g. maternal postpartum weight retention or the long-term prognosis of infants, as the data were not available. Third, GWG was determined over the entire pregnancy period and not assessed as weekly gains.

## Conclusion

This study provides the optimal values of GWG to minimize the occurrence of undesirable pregnancy outcomes for each pre-pregnancy BMI group in a population of Chinese women.

## Abbreviations

CPWCS: Chinese Pregnant Women Cohort Study; CPWCS-PUMC: Chinese Pregnant Women Cohort Study-Peking Union Medical College; CS: Cesarean section; GA: Gestational anemia; GDM: Gestational diabetes mellitus; GWG: Gestational weight gain; IOM: Institute of Medicine; LBW: Low birth weight; LGA: Large for gestational age; MAC: Macrosomia; PB: Preterm birth; GH: Gestational hypertension; PROM: Premature rupture of membranes; SGA: Small for gestational age.

## Supplementary Information

The online version contains supplementary material available at <https://doi.org/10.1186/s12958-021-00797-y>.

**Additional file 1: Supplementary Table 1.** Recommended gestational weight gain of different criteria.

## Acknowledgements

Thanks for the cooperation of 24 hospitals of China, the name as follows: Xinjiang Uygur Autonomous Region Urumqi Maternal and Child Health Hospital; Guiyang Maternal and Child Health Hospital, Guizhou Province; Northwest Women and Children's Hospital of Shan'xi Province; Changsha Maternal and Child Health Hospital, Hunan Province; Maternal and Child

Health Hospital, He'nan Province; Jiaxian Maternal and Child Health Hospital of He'nan Province; Changzhou Second People's Hospital of Jiangsu Province; Maternal and Child Health Hospital of Jin'an District, Luan City, Anhui Province; People's Hospital of Dong'e County, Shandong Province; Dongguan Maternal and Child Health Hospital, Guangdong Province; Maternal and Child Health Hospital of Linhe District, Bayannaoer City, Inner Mongolia; Affiliated Hospital of Guizhou Medical University; Yangzhou Maternal and Child Health Hospital, Jiangsu Province; Affiliated hospital of j'ning medical college; Zaozhuang Maternal and Child Health Hospital, Shandong Province; Sino-Japanese Friendship Hospital Affiliated to Jilin University; Affiliated Hospital of Jiujiang Medical College; First Affiliated Hospital of Nanchang University; Chengdu Women and Children's Central Hospital, Sichuan Province; Chongqing Three Gorges Central Hospital; Shan'xi People's Hospital; Xinyang Maternal and Child Health Hospital, He'nan Province; Changchun Obstetrics and Gynecology Hospital of Jilin Province; Tongzhou District Maternal and Child Health Hospital of Beijing. Finally, we thank for the assistance of the Chinese Medical Association.

## Authors' contributions

YS, YJ and LKM were responsible for the conception and design of the study. YS, ZZS, YLZ, YJ and LKM were responsible for analysis and interpretation. Furthermore, YS, ZZS, YLZ, YWW, SM, SHZ, JTL, SSW, YHF, YLC, SYC, YJS, LKM and YJ were in charge of data collection, ZZS and YLZ conducted statistical analysis. YS and ZZS drafted the manuscript; YJ and LKM revised and commented the draft. All authors read and approved the final manuscript.

## Funding

The work was supported by Chinese Academy of Medical Sciences Innovation Fund for Medical Sciences (CIFMS) (grant nos: 2016-I2 and M-1-008). The funder had no role in the design of the study or the collection, analysis, and interpretation of data, or in writing the manuscript.

## Availability of data and materials

The datasets used and/or analysed during the current study are available from the corresponding author on reasonable request.

## Declarations

### Ethics approval and consent to participate

The study protocol was registered at Clinical Trials (NCT03403543) and approved by the Ethics Review Committee of Peking Union Medical College Hospital (HS-1345). Written informed consent was obtained from all participants prior to enrollment.

### Consent for publication

Not applicable.

### Competing interests

The authors declare that they have no competing interests.

Received: 19 April 2021 Accepted: 8 July 2021

Published online: 30 August 2021

## References

1. WHO. State of inequality: reproductive, maternal, newborn and child health. 2015. Available from: [http://www.who.int/gho/health\\_equity/report\\_2015/en](http://www.who.int/gho/health_equity/report_2015/en).
2. Rong K, Yu K, Han X, Szeto IM, Qin X, Wang J, et al. Pre-pregnancy BMI, gestational weight gain and postpartum weight retention: a meta-analysis of observational studies. *Public Health Nutr*. 2015;18(12):2172–82.
3. Goldstein RF, Abell SK, Ranasinha S, Misso M, Boyle JA, Black MH, et al. Association of gestational weight gain with maternal and infant outcomes: a systematic review and meta-analysis. *JAMA*. 2017;317(21):2207–25.
4. Santos S, Voerman E, Amiano P, Barros H, Beilin LJ, Bergstrom A, et al. Impact of maternal body mass index and gestational weight gain on pregnancy complications: an individual participant data meta-analysis of European, North American, and Australian cohorts. *BJOG*. 2019;126(8):984–95.

5. Vivatkusol Y, Thavaramara T, Phaloprakarn C. Inappropriate gestational weight gain among teenage pregnancies: prevalence and pregnancy outcomes. *Int J Womens Health*. 2017;9:347–52.
6. Mamun AA, Callaway LK, O'Callaghan MJ, Williams GM, Najman JM, Alati R, et al. Associations of maternal pre-pregnancy obesity and excess pregnancy weight gains with adverse pregnancy outcomes and length of hospital stay. *BMC Pregnancy Childbirth*. 2011;11:62.
7. Xu Z, Wen Z, Zhou Y, Li D, Luo Z. Inadequate weight gain in obese women and the risk of small for gestational age (SGA): a systematic review and meta-analysis. *J Matern Fetal Neonatal Med*. 2017;30(3):357–67.
8. Morisset AS, Tchernoof A, Dube MC, Veillette J, Weisnagel SJ, Robitaille J. Weight gain measures in women with gestational diabetes mellitus. *J Womens Health (Larchmt)*. 2011;20(3):375–80.
9. Macdonald-Wallis C, Tilling K, Fraser A, Nelson SM, Lawlor DA. Gestational weight gain as a risk factor for hypertensive disorders of pregnancy. *Am J Obstet Gynecol*. 2013;209(4):327.e1–17.
10. Shulman R, Kottke M. Impact of maternal knowledge of recommended weight gain in pregnancy on gestational weight gain. *Am J Obstet Gynecol*. 2016;214(6):754.e1–7.
11. Shao T, Tao H, Ni L, Sun Y, Yan S, Gu C, et al. Maternal pre-pregnancy body mass index and gestational weight gain with preschool children's overweight and obesity. *Zhonghua Yu Fang Yi Xue Za Zhi*. 2016;50(2):123–8.
12. Institute of Medicine: Guidelines Reexamine IOM Pregnancy Weight. Weight gain during pregnancy: reexamining the guidelines. Washington (DC): National Academies Press (US); 2009.
13. Johnson J, Clifton RG, Roberts JM, Myatt L, Hauth JC, Spong CY, et al. Pregnancy outcomes with weight gain above or below the 2009 Institute of Medicine guidelines. *Obstet Gynecol*. 2013;121(5):969–75.
14. Melby MK, Yamada G, Surkan PJ. Inadequate gestational weight gain increases risk of small-for-gestational-age term birth in girls in Japan: a population-based cohort study. *Am J Hum Biol*. 2016;28(5):714–20.
15. Jiang X, Liu M, Song Y, Mao J, Zhou M, Ma Z, et al. The Institute of Medicine recommendation for gestational weight gain is probably not optimal among non-American pregnant women: a retrospective study from China. *J Matern Fetal Neonatal Med*. 2019;32(8):1353–8.
16. Zhang SP. A cohort study of the appropriate value of weight gain during pregnancy. Chengdu: Qingdao University; 2015.
17. Yan J, Wang T, Zhu X, Kong X, Zheng Y. Weight gain of pregnant women and its influencing factors. *Chin J Obstet Gynecol Pediatr (Electron Ed)*. 2017;13(3):316–20.
18. Xu X, Zhou M, Zhao Y, He X, Liu Q, Qiu J, et al. Optimal gestational weight gain for fertile women and its association with adverse outcomes. *J Pract Obstet Gynecol*. 2014;30(8):617–20.
19. Yang Y, Yang H. Investigation into the clinical suitability of Institute of Medicine 2009 guidelines regarding weight gain during pregnancy for women with full term singleton fetus in China. *Chin J Obstet Gynecol*. 2012;47(9):646–50.
20. Association OaGBoCM. Guidelines for reconception and prenatal care. *Chin J Perinat Med*. 2018;21(3):145–52.
21. Wang WP, Chen FF, Mi J, Teng Y, Zhao J, Wu MH, et al. Gestational weight gain and its relationship with the birthweight of offspring. *Chin J Obstet Gynecol*. 2013;48(5):321–5.
22. Sun Y, Shen Z, Zhan Y, Wang Y, Ma S, Zhang S, et al. Effects of pre-pregnancy body mass index and gestational weight gain on maternal and infant complications. *BMC Pregnancy Childbirth*. 2020;20(1):390.
23. Health and Family Planning Commission of the People's Republic of China. Criteria of weight for adults WS/T 428–2013. Beijing China. 2013.
24. US IoM. Weight gain during pregnancy: reexamining the guidelines. Washington (DC): National Academies Press (US); 2009.
25. Nomura K, Kido M, Tanabe A, Nagashima K, Takenoshita S, Ando K. Investigation of optimal weight gain during pregnancy for Japanese Women. *Sci Rep*. 2017;7(1):2569.
26. Institute of Medicine (US) and National Research Council (US) Committee to Reexamine IOM Pregnancy Weight Guidelines. Weight gain during pregnancy: reexamining the guidelines[M] [press release]. Washington DC: National Academies Press; 2009.
27. De Franchis R, Baveno VI Faculty. Expanding consensus in portal hypertension: report of the Baveno VI Consensus Workshop: stratifying risk and individualizing care for portal hypertension. *J Hepatol*. 2015;63(3):743–52.
28. Basevi V. Standards of medical care in diabetes--2014. *Diabetes Care*. 2013;37:S14–80.
29. Le J. *Obstetrics and gynecology*. 7th ed. Beijing: People's Medical Publishing House; 2008.
30. Committee on Practice Bulletins-Obstetrics. ACOG practice bulletin no. 188: prelabor rupture of membranes. *Obstet Gynecol*. 2018;131(1):e1–e14.
31. Lin L, Wei Y, Zhu W, Wang C, Su R, Feng H, et al. Prevalence, risk factors and associated adverse pregnancy outcomes of anaemia in Chinese pregnant women: a multicentre retrospective study. *BMC Pregnancy Childbirth*. 2018;18(1):111.
32. Patel A, Prakash AA, Das PK, Gupta S, Pusdekar YV, Hibberd PL. Maternal anemia and underweight as determinants of pregnancy outcomes: cohort study in eastern rural Maharashtra, India. *BMJ Open*. 2018;8(8):e021623.
33. Ruifrok AE, van Poppel MN, van Wely M, Rogozinska E, Khan KS, de Groot CJ, et al. Association between weight gain during pregnancy and pregnancy outcomes after dietary and lifestyle interventions: a meta-analysis. *Am J Perinatol*. 2014;31(5):353–64.
34. Crowther CA, Hiller JE, Moss JR, McPhee AJ, Jeffries WS, Robinson JS. Effect of treatment of gestational diabetes mellitus on pregnancy outcomes. *N Engl J Med*. 2005;352(24):2477–86.
35. Maso G, Piccoli M, Parolin S, Restaino S, Alberico S. Diabetes in pregnancy: timing and mode of delivery. *Curr Diab Rep*. 2014;14(7):506.
36. Lumbiganon P, Laopaiboon M, Gulmezoglu AM, Souza JP, Taneepanichskul S, Ruyan P, et al. Method of delivery and pregnancy outcomes in Asia: the WHO global survey on maternal and perinatal health 2007–08. *Lancet*. 2010;375(9713):490–9.
37. Enomoto K, Aoki S, Toma R, Fujiwara K, Sakamaki K, Hirahara F. Pregnancy outcomes based on pre-pregnancy body mass index in Japanese women. *PLoS One*. 2016;11(6):e0157081.
38. Gaillard R, Durmus B, Hofman A, Mackenbach JP, Steegers EA, Jaddoe VW. Risk factors and outcomes of maternal obesity and excessive weight gain during pregnancy. *Obesity (Silver Spring)*. 2013;21(5):1046–55.
39. Harvey MW, Braun B, Ertel KA, Pekow PS, Markenson G, Chasan-Taber L. Prepregnancy body mass index, gestational weight gain, and odds of cesarean delivery in Hispanic women. *Obesity (Silver Spring)*. 2018;26(1):185–92.
40. Xiong C, Zhou A, Cao Z, Zhang Y, Qiu L, Yao C, et al. Association of pre-pregnancy body mass index, gestational weight gain with cesarean section in term deliveries of China. *Sci Rep*. 2016;6:37168.
41. Nilsson C, Persson M, Lindkvist M, Petersson K, Mogren I. High weight gain during pregnancy increases the risk for emergency caesarean section - population-based data from the Swedish Maternal Health Care Register 2011–2012. *Sex Reprod Healthc*. 2017;11:47–52.
42. Yang S, Peng A, Wei S, Wu J, Zhao J, Zhang Y, et al. Pre-pregnancy body mass index, gestational weight gain, and birth weight: a cohort study in China. *PLoS One*. 2015;10(6):e0130101.

## Publisher's Note

Springer Nature remains neutral with regard to jurisdictional claims in published maps and institutional affiliations.