

Prognostic significance of lymphocyte-to-monocyte ratio in diffuse large B-cell lymphoma: a systematic review and meta-analysis

Wen-Kai Xia¹, Qing-Feng Lin², Dong Shen², Zhi-Li Liu², Jun Su² and Wei-Dong Mao²

¹ Department of Nephrology, The Affiliated Jiangyin Hospital of Southeast University Medical College, Jiangsu, China

² Department of Oncology, The Affiliated Jiangyin Hospital of Southeast University Medical College, Jiangsu, China

Keywords

diffuse large B-cell lymphoma; lymphocyte-to-monocyte ratio; meta-analysis; prognosis

Correspondence

W.-D. Mao, Department of Oncology, The Affiliated Jiangyin Hospital of Southeast University Medical College, 163 Shoushan Road, Jiangyin, Jiangsu 214400, China
E-mail: maowdjy@163.com

(Received 3 January 2016, revised 5 March 2016, accepted 31 March 2016)

doi:10.1002/2211-5463.12066

Published evidence on the prognostic significance of lymphocyte-to-monocyte ratio (LMR) in diffuse large B-cell lymphoma (DLBCL) is controversial. We performed an updated meta-analysis from 12 reports with 5021 patients to more accurately evaluate the prognostic value of LMR in DLBCL. Herein, we confirmed that patients with low LMR had shorter overall survival and progression-free survival than those with high LMR in DLBCL. Subgroup analyses indicated that patient source, cut-off values of LMR, treatment methods, and sample size showed similar prognostic performance in DLBCL patients. No significant heterogeneity was observed for progression-free survival (PFS, $P^{\text{het}} = 0.192$) among the enrolled studies. The meta-analysis suggests that the LMR may be a potential biomarker in the prediction of clinical outcomes for DLBCL patients.

Diffuse large B-cell lymphoma (DLBCL) is a major subtype of non-Hodgkin lymphoma, responsible for over 25% of all newly incident patients across the world [1]. Despite substantial improvement in treatment by the introduction of rituximab, long-term survival of DLBCL remains poor due to its relapse and refractory after initial remission [2]. A series of data have reported multiple biomarkers to predict clinical outcomes of DLBCL patients. However, the identification of high-risk patients with expected 5-year survival of less than 50% remains a great challenge with the use of traditional marker. Therefore, it is urgent to seek effective prognostic markers for the evaluation of a patient's prognosis using inexpensive, widely available, and easily explained clinical parameters.

Immunodeficiency is one of the strongest risk factors in adult non-Hodgkin lymphoma [3]. Systemic immune suppression is markedly associated with the occurrence

of lymphoma [4]. C-reactive protein (CRP), neutrophil-to-lymphocyte ratio (NLR), and platelet-to-lymphocyte ratio (PLR) have been reported to predict long-term survival in various solid cancers [5–7]. In view of clinical application such as cost and technical limitations, recent studies have explored a surrogate biomarker, showing the host system immune status in peripheral blood and may serve as a prognostic indicator in DLBCL [8]. The absolute lymphocyte count (ALC) and absolute monocyte count (AMC), surrogate markers of tumor microenvironment, have been reported as prognostic factors to predict outcomes of DLBCL patients [9].

Recent studies showed that the ALC/AMC (lymphocyte-to-monocyte ratio, LMR) is considered as a prognostic marker of tumor microenvironment in DLBCL patients [10,11]. For example, low LMR could reduce long-term survival in patients with DLBCL [8,10,12–14]. However, other investigators

Abbreviations

ALC, absolute lymphocyte count; AMC, absolute monocyte count; CI, confidence interval; CRP, C-reactive protein; DLBCL, diffuse large B-cell lymphoma; HR, hazard ratio; LMR, lymphocyte-to-monocyte ratio; NLR, neutrophil-to-lymphocyte ratio; OS, overall survival; PFS, progression-free survival; PLR, platelet-to-lymphocyte ratio.

reported that the LMR is hardly correlated with survival in the germinal center-type DLBCL patients treated with R-CHOP [15]. Moreover, a previous meta-analysis, which enrolled nine studies, has suggested an increased risk with low LMR from a total of 4198 individuals [16]. However, the following studies from 148 Taiwanese and 182 Serbian patients with newly diagnosed DLBCL exhibited no significant prognostic value in multivariate analysis [16,17]. These contradictory findings prompted us to explore more accurately the prognostic value of LMR in DLBCL patients. Herein, we performed an updated meta-analysis including 12 studies to accurately estimate the effect of LMR on the survival of DLBCL patients using qualified relevant publications.

Methods

Publication selection

The published data were searched according to a literature review system with the Preferred Reporting Items for Systematic Reviews and Meta-Analysis guidelines [18]. Studies were identified in databases from PubMed and Web of Science (updated on March 3 2016) using the following terms: 'lymphocyte', 'monocyte', 'ratio', and 'diffuse large B-cell lymphoma'. Paper language was restricted to English. Only those published as full-text articles were chosen as candidates.

Inclusion and exclusion criteria

Studies evaluating the association between LMR and survival of DLBCL patients had to meet the following criteria: (a) explored the correlation of LMR with overall survival (OS) or progression-free survival (PFS) of DLBCL patients; (b) sufficient information provided to estimate the hazard ratio (HR) and 95% confidence interval (CI) of OS or PFS; and (c) published in English.

Data extraction

For each study, two reviewers (WKX and QFL) collected information carefully according to inclusion criteria, such as first author, publication year, study country, tumor stage, cut-off value, treatment method, study design, follow-up period, and sample size. HRs were extracted from multivariate analysis in the meta-analysis. All disagreements about eligibility were resolved by discussion with another reviewer.

Statistical analysis

STATA software version 11.0 (College Station, TX, USA) was employed to analyze the extracted information. HRs

with corresponding 95% CIs were used to assess the strength of association between LMR and the survival of DLBCL patients from multivariate analysis in each eligible study. Cochran's Q test and Higgins I -squared statistic were performed to estimate the heterogeneity of pooled results. $I^2 > 50\%$ was regarded as significant heterogeneity. The random-effects model (DerSimonian–Laird method) and fixed-effects model (Mantel–Haenszel method) were employed to generate the pooled results. Stratified analyses were performed to investigate causes for the heterogeneity across studies. The stability of the combined results was evaluated by sensitivity analysis. Publication bias of studies was further evaluated by Egger's linear regression test. Statistical analyses were two-sided and $P < 0.05$ was considered statistically significant.

Results

Characteristics of studies

As depicted in Fig. 1, according to the inclusion and exclusion criteria, 12 eligible studies were enrolled in this meta-analysis. The characteristics of studies are shown in Table 1. Eligible studies with 5021 patients were enrolled. Seven studies consisted of two cohorts. One study was performed in Korea [8], Israel [19], Japan [13], Czech [20], and Taiwan [17], respectively. One study [14] included only late-stage disease (III/IV). Eleven studies explored the association of LMR and OS, while seven studies investigated the correlation of LMR and PFS. The detail characteristics are summarized in Table 1.

Overall survival

The overall results for OS are shown in Table 2. Eleven studies exhibited the association of LMR and OS in 4884 DLBCL patients. Results of the pooled analysis indicated that patients with low LMR were obviously associated with worse OS (HR = 1.75, 95% CI = 1.37–2.23, $P < 0.001$) with significant heterogeneity among these studies ($I^2 = 74.0\%$; Fig. 2). In a stratified analysis by country, cut-off value, treatment method, and sample size, a statistically significant association was observed for Western countries (HR = 1.41, 95% CI = 1.11–1.79) and Eastern countries (HR = 2.08, 95% CI = 1.65–2.63), LMR cut-off < 3 (HR = 1.52, 95% CI = 1.21–1.91) and ≥ 3 (HR = 2.44, 95% CI = 1.41–4.22), R-CHOP (HR = 1.72, 95% CI = 1.31–2.26) and non-R-CHOP (HR = 1.90, 95% CI = 1.38–2.61), and sample size < 400 (HR = 1.92, 95% CI = 1.51–2.44) vs. ≥ 400 (HR = 1.56, 95% CI = 1.16–2.08).

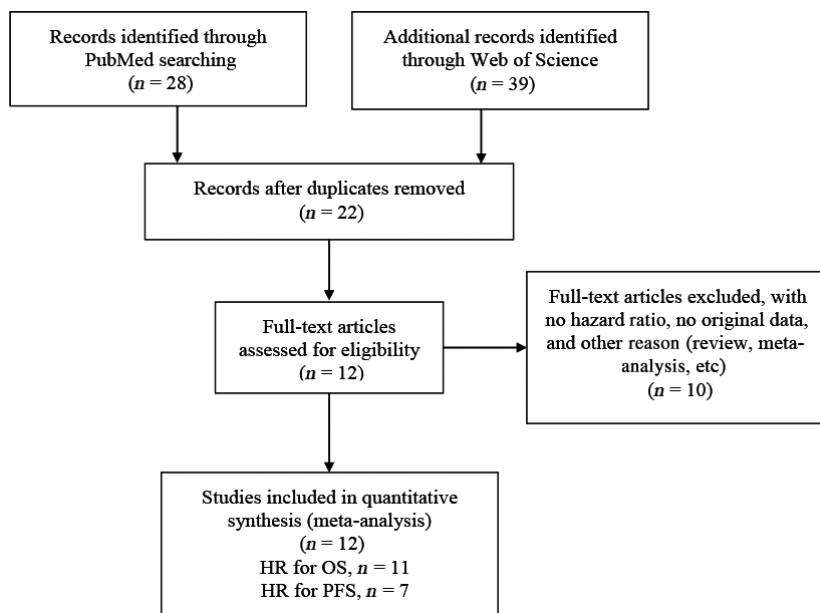


Fig. 1. Flowchart of the eligible studies in this meta-analysis.

Table 1. Characteristics of included studies.

First author (publication year), country	Study design	LMR	Follow-up (month/median)	Treatment received	Stage	No. of patients	Statistical method	Survival
Ho (2015), Taiwan [17]	R	2.11	53.28	R-CHOP	I-IV	148	Multivariate	OS, PFS
Jelicic (2015), Serbia [23]	R	2.8	NR	R-CHOP	I-IV	182	Multivariate	OS
Belotti (2015), Italy [26]	R	2.4	24	R-CHOP	I-IV	137	Multivariate	PFS
Prochazka (2014), Czech [20]	R	2.43	36	R-CHOP	I-IV	443	Univariate	OS
Koh (2014), Korea [8]	R	3.04	37	R-CHOP	I-IV	603	Multivariate	OS, PFS
Wei (2014), China [15]	R	2.6	52	Non-R-CHOP	I-IV	168	Multivariate	OS, PFS
Tadmor (2014), Serbia [19]	R	2.8	34	R-CHOP	I-IV	222	Multivariate	OS
Markovic (2014), Israel and Italy [27]	R	2.1	NR	R-CHOP	I-IV	1017	Multivariate	OS
Li (2014), China [21]	R	3.8	36	R-CHOP	I-IV	244	Multivariate	OS, PFS
Watanabe (2013), Japan [13]	R	4	58	R-CHOP	I-IV	362	Multivariate	OS, PFS
Rambaldi (2013), Italy [14]	R	2.6	77	Non-R-CHOP	III + IV	1057	Multivariate	OS
Li (2012), China [10]	R	2.6	NR	R-CHOP	I-IV	438	Multivariate	OS, PFS

R, retrospective; NR, not reported; Stage, Ann Arbor stage; PFS, progression-free survival; OS, overall survival; Treatment methods describe whether the patients received R-CHOP (rituximab, cyclophosphamide, doxorubicin, vincristine, and prednisone), or received non-R-CHOP, such as chemotherapy, radiotherapy, and surgery.

Progression-free survival

The correlation of LMR and PFS in 2100 patients with DLBCL was further explored in the meta-analysis (Table 2). The pooled data from seven studies showed that decreased LMR was significantly correlated with short PFS (HR = 2.21, 95% CI = 1.80–2.72, $P < 0.001$), and no heterogeneity was found among these studies ($I^2 = 31.0\%$; Fig. 3). Subgroup analysis was further performed according to above confounders in OS. Stratification showed that low LMR was associated with poor prognosis in DLBCL patients

regardless of study country, cut-off value, therapeutic method, and sample size (Table 2).

Test of heterogeneity

There was no significant heterogeneity among studies for PFS ($P^{\text{het}} = 0.192$) except for OS ($P^{\text{het}} < 0.001$), and the random-effect model was employed to estimate OS. Additionally, sensitivity analysis was conducted to further explore the source of heterogeneity and the stability of the results among studies for OS

Table 2. The main results of the meta-analysis.

Variables	No. of studies	No. of patients	Regression model		P^{het}	I^2 (%)
			Random	Fixed		
OS	11	4884	1.75 (1.37–2.23)	1.27 (1.18–1.38)	< 0.001	74.0
Stratified analysis						
Country						
Western	5	2921	1.41 (1.11–1.79)	1.19 (1.10–1.30)	0.025	64.2
Eastern	6	1963	2.21 (1.61–3.02)	2.08 (1.65–2.63)	0.166	36.1
Cut-off						
< 3	8	3675	1.52 (1.21–1.91)	1.22 (1.12–1.32)	0.014	60.2
≥ 3	3	1209	2.44 (1.41–4.22)	2.12 (1.61–2.79)	0.042	68.4
Treatment						
R-CHOP	9	3659	1.72 (1.31–2.26)	1.24 (1.14–1.35)	< 0.001	75.0
Non-R-CHOP	2	1225	1.90 (1.38–2.61)	1.90 (1.38–2.61)	0.897	0.0
Sample size						
< 400	6	1326	1.97 (1.41–2.74)	1.92 (1.51–2.44)	0.115	43.5
≥ 400	5	3558	1.56 (1.16–2.08)	1.21 (1.12–1.32)	0.002	76.9
PFS	7	2100	2.31 (1.74–3.06)	2.21 (1.80–2.72)	0.192	31.0
Stratified analysis						
Country						
Western	1	137	8.00 (0.98–66.67)	8.00 (0.98–66.67)		
Eastern	6	1963	2.25 (1.71–2.97)	2.18 (1.77–2.69)	0.203	31.0
Cut-off						
< 3	4	891	2.24 (1.31–3.82)	2.10 (1.37–3.21)	0.254	26.3
≥ 3	3	1209	2.41 (1.62–3.58)	2.24 (1.77–2.84)	0.205	27.9
Treatment						
R-CHOP	6	1932	2.29 (1.68–3.13)	2.19 (1.77–2.70)	0.134	40.7
Non-R-CHOP	1	168	2.92 (0.99–8.61)	2.92 (0.99–8.61)		
Sample size						
< 400	5	1059	2.49 (1.55–3.99)	2.37 (1.74–3.23)	0.104	47.9
≥ 400	2	1041	2.08 (1.58–2.75)	2.08 (1.58–2.75)	0.429	0.0

OS, overall survival; PFS, progression-free survival; P^{het} , P value for heterogeneity; Treatment methods describe whether the patients received R-CHOP (rituximab, cyclophosphamide, doxorubicin, vincristine, and prednisone), or received non-R-CHOP, such as chemotherapy, radiotherapy, and surgery.

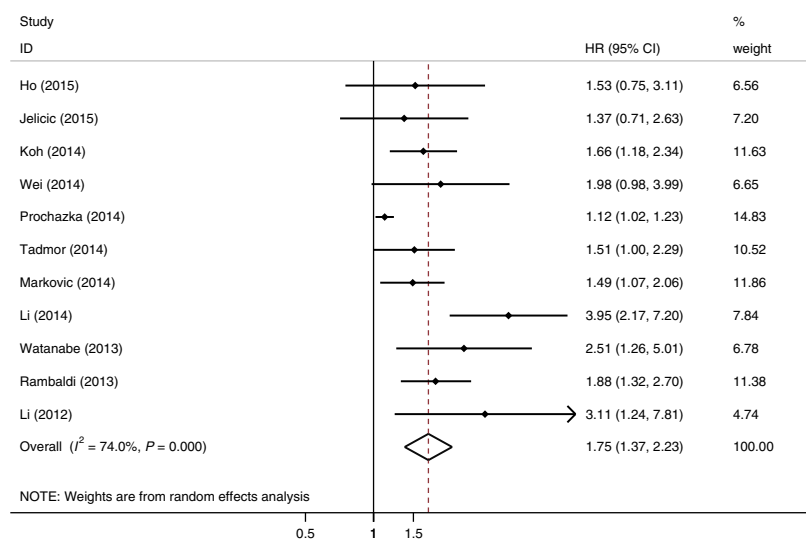


Fig. 2. Forest plots of studies assessing HRs with corresponding 95% CIs of LMR for overall survival.

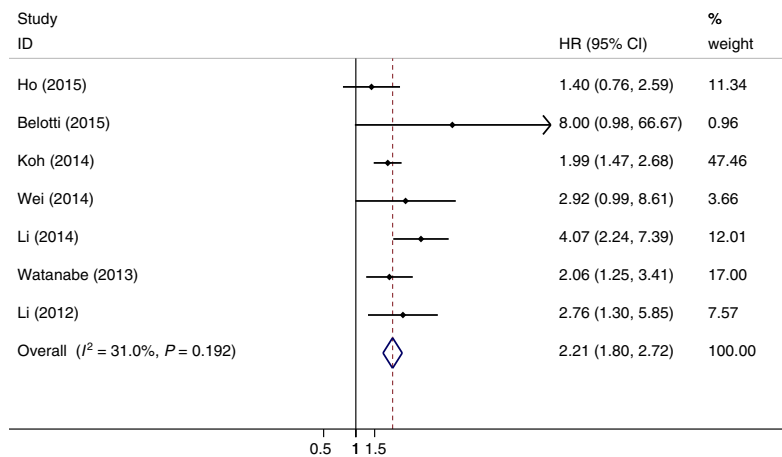


Fig. 3. Forest plots of studies assessing HRs with corresponding 95% CIs of LMR for progression-free survival.

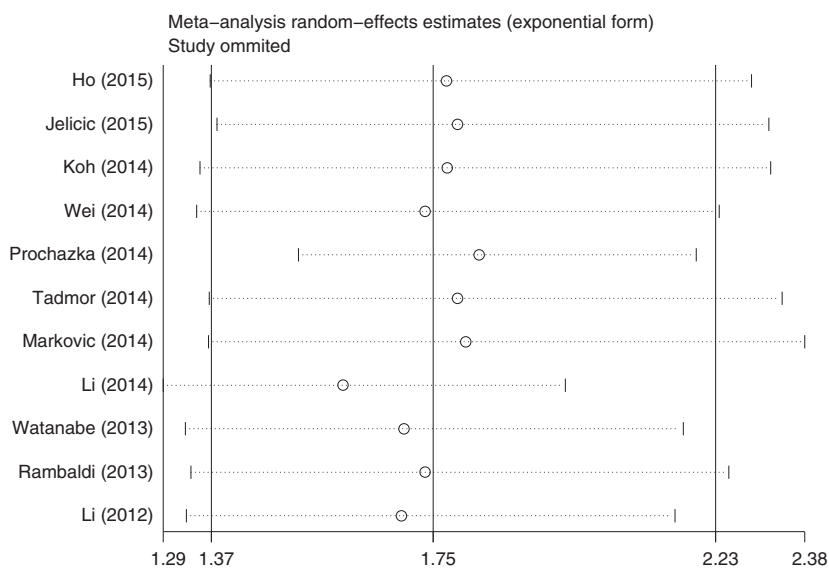


Fig. 4. Sensitivity analysis of effect of individual studies on the pooled HRs for LMR and overall survival in DLBCL.

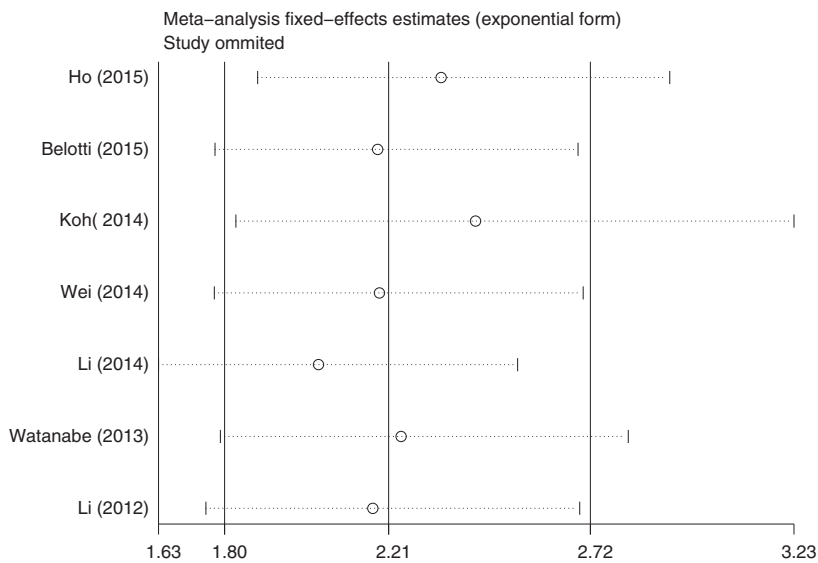


Fig. 5. Sensitivity analysis of effect of individual studies on the pooled HRs for LMR and progression-free survival in DLBCL.

and PFS. A report by Li *et al.* [21] was the main origin of heterogeneity for OS, which the heterogeneity was markedly reduced after exclusion of these studies ($p^{\text{het}} = 0.069$). The pooled results for OS and PFS was not significantly influenced by removing single study each time (Figs 4 and 5).

Discussion

Mounting evidence shows a correlation between LMR and survival of DLBCL patients. However, these results remain controversial. In this updated meta-analysis, associations between decreased LMR and survival of DLBCL patients were systematically evaluated. Our results demonstrated that DLBCL patients with low LMR had worse OS (HR = 1.75, 95% CI = 1.37–2.23) and PFS (HR = 2.21, 95% CI = 1.80–2.72) than those with high LMR. In stratified analysis by country, cut-off value, treatment approach, and sample size, we observed that these confounders could not change prognostic performance of LMR in DLBCL patients. A previous meta-analysis, which enrolled nine studies, showed an increased risk with low LMR from a total of 4198 individuals [16], which is consistent with our results. However, this previous meta-analysis reported that study by Prochazka *et al.* [20] should be excluded due to its focus on elderly patients. Elderly patients are commonly not selected to enter clinical studies because of a higher incidence of deaths unrelated to lymphoma, but their complete remission rates are lower due to the suboptimal treatment [22]. Our study provided a valuable adjunct to physician judgment by the inclusion of elderly patients with DLBCL. Meanwhile, the studies [17,23] also exhibited the prognostic value of LMR in patients with newly diagnosed DLBCL. Therefore, this is an updated meta-analysis of 12 published articles on the association between low LMR and clinical outcomes in DLBCL.

Recently, a series of investigations have reported the prognostic value of LMR in gastric cancer [7], lung cancer [24], and colorectal cancer [25]. Furthermore, a few investigations reported the prognostic value of LMR in DLBCL patients. DLBCL patients with low LMR had markedly worse survival (OS and PFS) than those with high LMR [8]. However, LMR was not correlated with long-term survival in patients with germinal center-type DLBCL [15]. Lin *et al.* [16] suggested that the low LMR at diagnosis has an adverse effect on survival for patients with DLBCL based on the previous meta-analysis from nine studies. In the present study, this was an updated meta-analysis to explore the prognostic value of LMR in DLBCL patients and suggested that LMR was employed to

evaluate clinical prognosis for patients with DLBCL. Additionally, LMR is a promising marker for clinical practice due to its inexpensive cost and routine test.

Several limitations should be acknowledged. First, the number of enrolled articles was relatively small. Studies of each subgroup were few by the stratified analyses. Second, LMR and clinical characteristics were not analyzed, such as bone marrow involvement, Ann Arbor stage, and lactate dehydrogenase. Finally, there is significant heterogeneity between OS and LMR; the results were relatively stable by sensitivity analysis, suggesting that the results were reliable.

In conclusion, decreased LMR is associated with poor prognosis in patients with DLBCL and shows an adverse effect on DLBCL patients, which could help clinicians stratify patients and select individual therapeutic strategy. Further studies are warranted to deeply understand the prognostic significance of LMR in DLBCL.

Acknowledgements

None.

Author contributions

WKX and WDM conceived and designed the experiments. WKX, QFL, DS, ZLL, and JS performed the experiments. WKX and QFL analyzed the data. DS and ZLL contributed reagents/materials/analysis tools. WKX and WDM wrote the manuscript.

References

- Habermann TM (2012) New developments in the management of diffuse large B-cell lymphoma. *Hematology* **17** (Suppl. 1), S93–S97.
- Friedberg JW (2011) Relapsed/refractory diffuse large B-cell lymphoma. *Hematology Am Soc Hematol Educ Program* **2011**, 498–505.
- Morton LM, Wang SS, Cozen W, Linet MS, Chatterjee N, Davis S, Severson RK, Colt JS, Vasef MA, Rothman N *et al.* (2008) Etiologic heterogeneity among non-Hodgkin lymphoma subtypes. *Blood* **112**, 5150–5160.
- Vegso G, Hajdu M and Sebestyen A (2011) Lymphoproliferative disorders after solid organ transplantation-classification, incidence, risk factors, early detection and treatment options. *Pathol Oncol Res* **17**, 443–454.
- Kim DK, Oh SY, Kwon HC, Lee S, Kwon KA, Kim BG, Kim SG, Kim SH, Jang JS, Kim MC *et al.* (2009) Clinical significances of preoperative serum interleukin-6

- and C-reactive protein level in operable gastric cancer. *BMC Cancer* **9**, 155.
- 6 Kishi Y, Kopetz S, Chun YS, Palavecino M, Abdalla EK and Vauthey JN (2009) Blood neutrophil-to-lymphocyte ratio predicts survival in patients with colorectal liver metastases treated with systemic chemotherapy. *Ann Surg Oncol* **16**, 614–622.
 - 7 Deng Q, He B, Liu X, Yue J, Ying H, Pan Y, Sun H, Chen J, Wang F, Gao T *et al.* (2015) Prognostic value of pre-operative inflammatory response biomarkers in gastric cancer patients and the construction of a predictive model. *J Transl Med* **13**, 66.
 - 8 Koh YW, Park CS, Yoon DH, Suh C and Huh J (2014) Should the cut-off values of the lymphocyte to monocyte ratio for prediction of prognosis in diffuse large B-cell lymphoma be changed in elderly patients? *Eur J Haematol* **93**, 340–348.
 - 9 Wilcox RA, Ristow K, Habermann TM, Inwards DJ, Micallef IN, Johnston PB, Colgan JP, Nowakowski GS, Ansell SM, Witzig TE *et al.* (2011) The absolute monocyte and lymphocyte prognostic score predicts survival and identifies high-risk patients in diffuse large-B-cell lymphoma. *Leukemia* **25**, 1502–1509.
 - 10 Li ZM, Huang JJ, Xia Y, Sun J, Huang Y, Wang Y, Zhu YJ, Li YJ, Zhao W, Wei WX *et al.* (2012) Blood lymphocyte-to-monocyte ratio identifies high-risk patients in diffuse large B-cell lymphoma treated with R-CHOP. *PLoS One* **7**, e41658.
 - 11 Aoki K, Tabata S, Yonetani N, Matsushita A and Ishikawa T (2013) The prognostic impact of absolute lymphocyte and monocyte counts at diagnosis of diffuse large B-cell lymphoma in the rituximab era. *Acta Haematol* **130**, 242–246.
 - 12 Porrata LF, Inwards DJ, Ansell SM, Micallef IN, Johnston PB, Hogan WJ and Markovic SN (2014) Infused autograft lymphocyte to monocyte ratio and survival in diffuse large B cell lymphoma. *Biol Blood Marrow Transplant* **20**, 1804–1812.
 - 13 Watanabe R, Tomita N, Itabashi M, Ishibashi D, Yamamoto E, Koyama S, Miyashita K, Takahashi H, Nakajima Y, Hattori Y *et al.* (2014) Peripheral blood absolute lymphocyte/monocyte ratio as a useful prognostic factor in diffuse large B-cell lymphoma in the rituximab era. *Eur J Haematol* **92**, 204–210.
 - 14 Rambaldi A, Boschini C, Gritti G, Delaini F, Oldani E, Rossi A, Barbui AM, Caracciolo D, Ladetto M, Gueli A *et al.* (2013) The lymphocyte to monocyte ratio improves the IPI-risk definition of diffuse large B-cell lymphoma when rituximab is added to chemotherapy. *Am J Hematol* **88**, 1062–1067.
 - 15 Wei X, Huang F, Wei Y, Jing H, Xie M, Hao X and Feng R (2014) Low lymphocyte-to-monocyte ratio predicts unfavorable prognosis in non-germinal center type diffuse large B-cell lymphoma. *Leuk Res* **38**, 694–698.
 - 16 Lin B, Chen C, Qian Y and Feng J (2015) Prognostic role of peripheral blood lymphocyte/monocyte ratio at diagnosis in diffuse large B-cell lymphoma: a meta-analysis. *Leuk Lymphoma* **56**, 2563–2568.
 - 17 Ho CL, Lu CS, Chen JH, Chen YG, Huang TC and Wu YY (2015) Neutrophil/lymphocyte ratio, lymphocyte/monocyte ratio, and absolute lymphocyte count/absolute monocyte count prognostic score in diffuse large B-cell lymphoma: useful prognostic tools in the rituximab era. *Medicine (Baltimore)* **94**, e993.
 - 18 Liberati A, Altman DG, Tetzlaff J, Mulrow C, Gotzsche PC, Ioannidis JP, Clarke M, Devereaux PJ, Kleijnen J and Moher D (2009) The PRISMA statement for reporting systematic reviews and meta-analyses of studies that evaluate health care interventions: explanation and elaboration. *PLoS Med* **6**, e1000100.
 - 19 Tadmor T, Bari A, Sacchi S, Marcheselli L, Liardo EV, Avivi I, Benyamini N, Attias D, Pozzi S, Cox MC *et al.* (2014) Monocyte count at diagnosis is a prognostic parameter in diffuse large B-cell lymphoma: results from a large multicenter study involving 1191 patients in the pre- and post-rituximab era. *Haematologica* **99**, 125–130.
 - 20 Prochazka V, Pytlik R, Janikova A, Belada D, Salek D, Papajik T, Campr V, Furst T, Furstova J and Trnecny M (2014) A new prognostic score for elderly patients with diffuse large B-cell lymphoma treated with R-CHOP: the prognostic role of blood monocyte and lymphocyte counts is absent. *PLoS One* **9**, e102594.
 - 21 Li YL, Pan YY, Jiao Y, Ning J, Fan YG and Zhai ZM (2014) Peripheral blood lymphocyte/monocyte ratio predicts outcome for patients with diffuse large B cell lymphoma after standard first-line regimens. *Ann Hematol* **93**, 617–626.
 - 22 Fields PA and Linch DC (2012) Treatment of the elderly patient with diffuse large B cell lymphoma. *Br J Haematol* **157**, 159–170.
 - 23 Jelacic J, Todorovic Balint M, Sretenovic DA, Balint B, Perunicic Jovanovic M, Andjelic B, Vukovic V, Djurasinovic V, Bila J, Pavlovic M *et al.* (2015) Enhanced International Prognostic Index (NCCN-IPI), Charlson Comorbidity Index and absolute lymphocyte count as predictors for survival of elderly patients with diffuse large B cell lymphoma treated by immunochemotherapy. *Neoplasma* **62**, 988–995.
 - 24 Chen YM, Lai CH, Chang HC, Chao TY, Tseng CC, Fang WF, Wang CC, Chung YH, Wang YH, Su MC *et al.* (2015) Baseline and trend of lymphocyte-to-monocyte ratio as prognostic factors in epidermal growth factor receptor mutant non-small cell lung cancer patients treated with first-line epidermal growth factor receptor tyrosine kinase inhibitors. *PLoS One* **10**, e0136252.
 - 25 Ozawa T, Ishihara S, Kawai K, Kazama S, Yamaguchi H, Sunami E, Kitayama J and Watanabe T (2015)

- Impact of a lymphocyte to monocyte ratio in stage IV colorectal cancer. *J Surg Res* **199**, 386–392.
- 26 Belotti A, Doni E, Bolis S, Rossini F, Casaroli I, Pezzatti S, Pogliani EM and Pioltelli PE (2015) Peripheral blood lymphocyte/monocyte ratio predicts outcome in follicular lymphoma and in diffuse large B-cell lymphoma patients in the rituximab era. *Clin Lymphoma Myeloma Leuk* **15**, 208–213.
- 27 Markovic O, Popovic L, Marisavljevic D, Jovanovic D, Filipovic B, Stanisavljevic D, Matovina-Brko G, Hajder J, Matkovic T, Zivkovic R *et al.* (2014) Comparison of prognostic impact of absolute lymphocyte count, absolute monocyte count, absolute lymphocyte count/absolute monocyte count prognostic score and ratio in patients with diffuse large B cell lymphoma. *Eur J Intern Med* **25**, 296–302.