



Genetic diversity and molecular evolution of sugarcane mosaic virus, comparing whole genome and coat protein sequence phylogenies

Khalid Muhammad¹ · Venura Herath^{2,3} · Khadija Ahmed¹ · Muhammad Tahir¹ · Jeanmarie Verchot²

Received: 4 April 2022 / Accepted: 13 July 2022 / Published online: 23 August 2022
© The Author(s) 2022

Abstract

Sugarcane mosaic virus (SCMV) is a widely distributed potyvirus that causes mosaic disease in sugarcane, maize, sorghum, canna, and other monocot species worldwide. This study used 139 SCMV full-length genome sequences to analyze the phylogenetic relatedness of geographically distinct isolates. The phylogenetic analysis revealed four major groups of SCMV isolates that relate to their primary host. The geographic locations for some isolates appear to be mismatched within the tree, suggesting either that convergent molecular evolution has occurred or that the tree reconstruction produces statistically significant incongruences that create uncertainty in the true evolutionary relationships of these virus isolates. Recombination analysis showed hot spots across most of the genome except in the coat protein (CP) coding region. We examined 161 SCMV CP sequences from the GenBank database, including sequences from samples collected in Pakistan, a region that has not been included in prior phylogenetic studies. These data suggest that the SCMV isolates from sugarcane (*Saccharum officinarum*) predate isolates from all other hosts, regardless of their geographic origins.

Introduction

The family *Potyviridae* currently comprises more than 30% of plant virus species, and the genus *Potyvirus* includes the largest number of species within the family [1]. The global distribution of these viruses is attributed to agricultural trade, especially for seed-borne viruses, as well as dispersal by migrating arthropod vectors. Trade and travel have enabled the establishment of potyviruses in different regions of the world and the introduction into other crops [2, 3]. According to Gibbs et al. [4], speciation among potyviruses results from mutations and selection, which enables them to become established in weeds or crops once they are introduced into new regions. Studies have indicated that recombination is not a common mechanism for potyvirus

speciation, and this makes phylogenetic trees informative for investigating the evolutionary origins of various potyviruses. Many lineages are defined by the relationships of their recognized hosts, which are grouped at the order level [4]. Phylogenetic investigations have identified eleven basal lineages of potyviruses, which are named according to the earliest-described species member [4–6].

The major members of the sugarcane mosaic virus group are sugarcane mosaic virus (SCMV), johnsongrass mosaic virus (JGMV), canna yellow streak virus (CaYSV), cocksfoot streak virus (CfSV), and pennisetum mosaic virus (PeMV) [7–9]. Researchers typically view the sugarcane mosaic virus group as viruses from Old World grasses; however, the inclusion of CaYSV, whose host range includes canna, achira, common bean, and chenopodium, within this group, suggests that the SCMV group has a broader host range and cannot be so narrowly defined [9–12]. The global trade of cereals and pulses, as well as ornamental plants, is likely to be a major factor influencing the genetic diversity of viruses within the SCMV group [13].

SCMV was first detected in sugarcane in 1919 and occurs throughout the world, causing mosaic disease in maize, sugarcane, canna, and other gramineous species worldwide [12, 14]. SCMV is transmitted by aphids in nature or by mechanical inoculation. As for all members of the family *Potyviridae*, the genome consists of a positive-sense single-stranded

Handling Editor: Stephen John Wylie.

✉ Jeanmarie Verchot
Jeanmarie.verchot@ag.tamu.edu

¹ Atta-ur-Rahman School of Applied Biosciences, National University of Sciences and Technology, Islamabad, Pakistan

² Department of Plant Pathology and Microbiology, Texas A&M University, College Station, TX 77843, USA

³ Department of Agriculture Biology, Faculty of Agriculture, University of Peradeniya, 20400 Peradeniya, Sri Lanka

RNA with a genome size of approximately 9–10 kb. The flexuous filamentous virion possesses a genome-linked protein (VPg) at the 5' end and a poly(A) tail at the 3' end. The genome encodes a single large polyprotein that is proteolytically processed into functional proteins [5].

Researchers have tried to understand the basis for genetic changes across the complete genome sequences of SCMV isolates obtained from different hosts and geographic locations [7, 15]. The preferential use of identical or synonymous codons (i.e., codons encoding the same amino acid) is a pattern shaped by natural selection, mutation pressure and bottlenecks, viral fitness, replication, protein structure and function, and adaptation to the host and environment [5, 7, 16]. Potyvirus genomes characteristically contain hyper-variable regions, such as the 5' UTR, and show extensive intraspecific recombination, which has been suggested by some researchers to confound phylogenetic studies investigating evolutionary features [5, 7, 16]. Traditional phylogenetic studies examine different genomic regions, which, for potyviruses, may produce different phylogenetic trees that cannot be used to group isolates into strains based on nucleotide or amino acid sequence similarities [7, 15–17].

For many SCMV isolates, the nucleotide sequences of the coat proteins (CPs) have been amplified for diagnostic studies, and these sequences have been deposited in the GenBank database [17–19]. These sequences are often studied to evaluate selection pressure, evolutionary lineages, and phylogenetic tree topologies [4, 20]. Sugarcane is a major crop in Pakistan, and most of the cultivated varieties are susceptible to SCMV infection [21]. Diagnostic studies have shown two SCMV strains, A and F, to be prevalent in Pakistan [22]. Early sequence analysis of the CP genes suggested that the SCMV variants in Pakistan represent novel populations [23]. Here, we have evaluated the full-length genome phylogenies to understand SCMV diversity and included SCMV CP sequences from Pakistan [18] to understand their phylogenetic relatedness to global isolates.

Materials and methods

Virus sequence retrieval, alignments, and phylogenetic analysis

One hundred thirty-nine full genome, polyprotein, and CP sequences were retrieved from the NCBI (National Center for Biotechnology Information) GenBank database and imported into Geneious Prime v2020.0.1 and MEGA-X v10.1.8 [18, 21, 24]. Infected field samples of sugarcane were collected in Pakistan, and the SCMV CP sequences were amplified by RT-PCR and cloned into the plasmid pTZ57R/T as reported by Akbar et al. [18]. The NCBI nucleotide sequence accession numbers and Protein IDs for the

curated genome and CP sequences used in this study are provided in Supplementary Tables S1 and S3. MUSCLE software, built in to MEGA X v10.1.8, was used for nucleotide and amino acid sequence alignments [24, 25]. Phylogenetic analysis was performed by the maximum-likelihood (ML) method, using the entire nucleotide sequence alignments, codon-based alignments, and polyprotein sequence alignments, with 1000 bootstrap replicates. ProTest v3.4.2 was used to determine the best model for nucleotide and codon-based alignments, and the general time-reversible (GTR) substitution, gamma distribution, and proportion of invariable sites (GTR + G + I) model was chosen [26]. iTOL v5.0 and v6.5.2 were used to display and annotate the phylogenetic trees [27]. Sequence similarity network analysis of full genome sequences and CP coding sequences was carried out according to country of origin, using Simplot ++ v1.0 [28].

Analysis of recombination, diversity, and phylodynamics of SCMV isolates

Recombination events were detected using the RDP5 recombination detection program with default settings and a *p*-value cutoff of 0.01. This program employs nine statistical detection methods: RDP, GENECONV, Bootscan, Maxchi, Chimaera, SiScan, Phylpro, LARD, and 3Seq [29–31]. Events that were detectable by at least five of the nine methods were tabulated, and recombination breakpoints were identified manually and tabulated. Recombination breakpoints identified using RDP5 were validated using the genetic algorithm GARD with the following parameter settings: Faster run mode, General Discrete for site-to-site rate variation, and rate classes 3. DnaSP v5 software was used to assess the nucleotide diversity (π) along 139 SCMV complete genomes with a sliding window size of 100 bp and a step size of 25 bp [16, 32].

Results

Phylogenetic analysis of complete SCMV genome sequences

To investigate the genetic variability within the species *Sugarcane mosaic virus*, we compiled and analyzed 139 previously reported SCMV genome sequences from Europe, North and South America, Asia, and Africa that were available in the GenBank database (Supplementary Table S1). These sequences were deposited and updated between the years 2000 and 2020. Their genome lengths ranged from 9,192 to 9,628 base pairs, and their polyprotein lengths ranged from 3,046 to 3,071 amino acids. The hosts were *Canna* spp., *Digitaria sanguinalis*, *Echinochloa crus-galli*, *Saccharum officinarum*, *Setaria viridis*, *Sorghum bicolor*,

or 85% for the coat protein coding region, we observed that geographically distinct isolates shared extensive sequence similarity (Fig. 2). These data indicate that the phylogenetic subgroups are more likely to be defined by host than by geography.

Analysis of recombination and variability across the genome of SCMV isolates

Recombination analysis was carried out using 139 full-length genome sequences. Recombination breakpoints identified

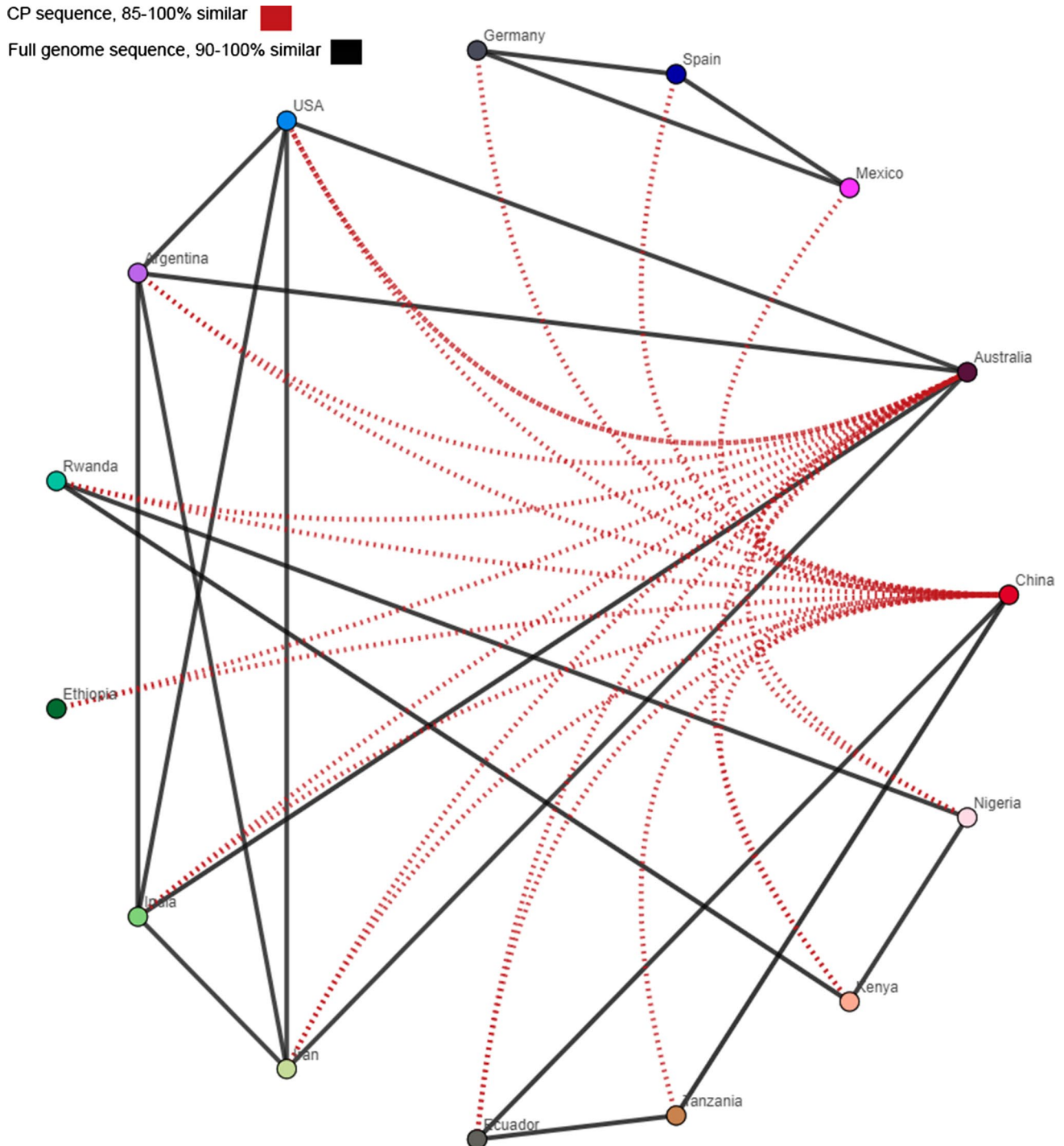


Fig. 2 Similarity network analysis of SCMV genome sequences conducted using SimPlot++, based on the country of origin. Black lines indicate sequences with high overall sequence identity (90–100%),

and red lines represent identity among the CP coding sequences (85–100%). Thresholds were chosen to best represent how geographically distinct isolates share high sequence similarity.

using RDP5 were confirmed using the genetic algorithm for recombination detection (GARD), with a general discrete distribution of sites into three rate classes [34]. The outputs of both detection programs confirmed 38 common recombination events with highly significant p -values. We tabulated the major breakpoints in each gene (Supplementary Table S2). Notably, the SCMV genomes assigned to phylogenetic groups I and II did not appear to be recombinants. Group IIIa had four genomes that appeared to be recombinants, and group IIIb had five recombinant genomes. One sequence was assigned to group IVA, and the majority of recombinant sequences, a total of 47 sequences, were assigned to phylogenetic group IVb. Eleven recombinant sequences were in group IVc (Supplementary Table S2).

Next, we mapped the recombination breakpoints across the SCMV genome. The SCMV genome, as for all potyviruses, encodes a long polyprotein that is proteolytically cleaved by viral proteinases to produce mature products. These proteins, in linear order, are named P1, helper component proteinase (HC-Pro), P3, 6K1, cylindrical inclusion (CI), 6K2, VPg, nuclear inclusion protein a-protease (Nia-Pro), nuclear inclusion protein b (Nib), and coat protein (CP). There is a short open reading frame (ORF) overlapping the P3 ORF that encodes a protein named PIPO [35]. Interestingly, the majority of recombination breakpoints were within the Nib-CP region of the polyprotein, between nucleotide (nt) positions 6837 and 9338 (Fig. 3, Supplementary Table S2). The second most common location for recombination breakpoints was the central region of the genome, stretching from P3 to Nia-Pro or the 5' end of the Nib coding region. Few genomes had breakpoints in the P1 or HC-Pro coding region (Fig. 3, Supplementary Table S2). Except for subgroup IVb, the majority of isolates showed a pattern of breakpoints that is similar among the subgroup members.

Potyviruses are well known for having hypervariable regions [15]. Prior studies of SCMV reported nucleotide sequence variation and polyprotein variation in a subset of isolates [16]. Here, we used DnaSP v5 software to assess the nucleotide diversity (P_i) across the full-length SCMV genome, using a window size of 100 bp and step size of 25 bp [32]. The total number of mutations was 6930 across 4427 sites, and the average number of nucleotide differences between sequences (k) was 1227.3. The nucleotide diversity (P_i) across the genome was 0.14, similar to what has been reported previously [16], showing that the 5' end of the P1 and coat protein (CP) coding sequences are highly polymorphic (Fig. 4).

ML phylogeny of the SCMV CP ORF shows clustering according to host

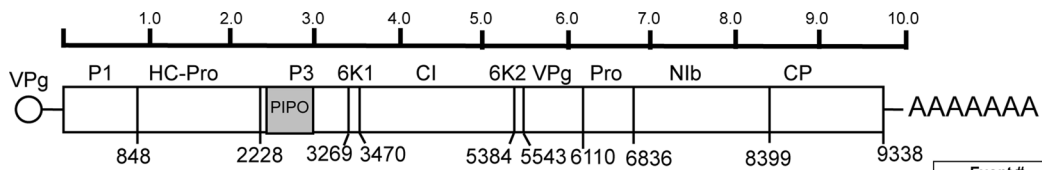
Previous studies reporting SCMV isolates from a single country and a common host have shown a low frequency

of polymorphisms in the CP sequences, but polymorphisms were more frequent between isolates from different hosts [16, 17, 19, 36]. Since there are more reported CP sequences than full genome sequences for SCMV, we performed ML analysis to determine if CP sequences that cluster into phylogenetic subgroups are more likely to be defined by host than by geography, like the full-length genome sequences. We examined 161 SCMV CP nucleotide sequences from NCBI, including sequences from Pakistan, which was not represented in the full-length genome sequences (Supplementary Tables S1 and S3) [14, 18, 21]. The sequences ranged from 971 to 1119 nt in length, and the alignment was trimmed at both ends to restrict analysis to the conserved 539 nt, stretching from position 447 to 970 in the alignment. This region resembles the “coherently evolving coat protein” (cCP) region used for broad potyvirus phylogeny studies by Gibbs et al. [6]. This region is more likely to evolve by point mutations and less by recombination. The most apparent pattern within this ML phylogeny is the clustering of isolates that primarily share common hosts but occur in various locations in the world (Fig. 5). For example, the sugarcane-infecting viruses from Argentina, Iran, India, China, Australia, and Pakistan form a large subgroup, further highlighting the importance of the host plant species in determining the CP sequence.

The phylogeny also showed individual isolates that have a common country of origin but different hosts that are closely related (Fig. 5). For example, four SCMV isolates infecting *S. officinarum* (sugarcane), three infecting *Canna* spp., and several more infecting maize were collected in China and appear to be closely related although the sugarcane-infecting isolates were collected in an earlier decade from other host isolates.

Discussion

SCMV is one of the most important cereal viruses globally and is among the most important diseases of sugarcane in tropical and subtropical areas. Sugarcane is used not only for sugar production but also as a source of biofuels through the production of cellulosic ethanol [18]. While the genetic diversity of SCMV has been analyzed by other investigators in prior studies, the number of available sequences of SCMV isolates remains limited [7, 14, 19, 20]. By including isolates from further geographic locations and adopting new bioinformatic tools to study complete genomes and CP sequences, we are beginning to understand the molecular evolution of SCMV. Given that the number of SCMV CP sequences in the NCBI database exceeds the number of available full genome sequences and represents a somewhat wider geographic distribution, this study was carried out to determine whether the available CP sequences from samples



Event #	NCBI Accession	Group/subgroup
1	JX047423	
2	MH093729	Group 4c
3	JX047417	
4	JX047427	
	JX047419	
	JX047422	
5	MH093718	Group 4b
	KP860936	
	MN759251	
	KP860935	
6	^h JX047418	
	JX047421	
	JX047420	
	KU171814	
	JX047428	
	MN586600	
	MN564941	
7	JX047417	Group 4c
8	^h AY149118	Group 4b
	AF494510	
9	AY569692	
10	MG932076	Group 3a
	MH093725	
11	KT895081	Group 3b
	KT895080	
12	^h GU474635	Group 4b
13	^h EU091075	Group 4b
14	^h AJ310105	Group 4a
15	^h MH093724	Group 4b
	KT895081	
16	KT895081	Group 3b
	KT895080	
17	^h MG932078	
18	MG932079	Group 4b
	MH093724	
	AY042184	
19	^h AY569692	
21	^h MN586600	Group 4b
	JX047417	
	MN586598	
	JX047395	
	JX047394	
	JX047427	
	JX047419	
	JX047422	
	JX047421	
	JX047420	
KU171814		
JX047428		
JX047418		
MN564941		
MN586599		
22	^h GU474635	
23	AY042184	
24	JX237863	Group 3b
25	MG932078	Group 4b
26	MF467403	Group 4c
	MF467402	
27	GU474635	Group 4b
	EU091075	
28	^h MH205604	Group 3a
29	MF467395	Group 4c
30	^h AM110759	Group 4b
31	^h MH795797	Group 3a
32	AF494510	Group 4b
33	^h KU886553	Group 4c
	KY006657	
	KU171817	

Fig. 3 Recombination analysis of SCMV genome sequences. The diagram highlights segments extending between major recombination breakpoints for each virus isolate. The NCBI accession numbers and phylogeny group/subgroups are identified on the left. The genome encoding the polyprotein is at the top, and the amino acid positions for the proteinase cleavage sites are identified below the genome map. The viral genome-linked protein (VPg) is at the 5' end, and the polyA tail is at the 3' end of the genome. The mature proteins are identified above the open box: P1 proteinase (P1), helper component proteinase (HC-Pro), pretty interesting *Potyviridae* ORF (PIPO), P3, 6K1, cylindrical inclusion (CI) protein, 6K2, viral protein genome linked (VPg), protease (Pro), nuclear inclusion b (NIb), and coat protein (CP).

from Pakistan would provide sufficient information to assess their geographical or host provenance. Toward this goal, we first compiled and analyzed 139 complete SCMV genome sequences and identified four major groups that extend from three deeply rooted branches. The genome sequences diverged mostly according to host species as well as geographical region, and thus, SCMV sequences isolated from maize clustered separately from those recovered from canna, sorghum, or sugarcane on the same or different continents, although there were some individual isolates in these clusters that were likely recovered from weeds associated with the same agricultural fields. Similar observations have been reported in previous studies [7, 14, 16].

The strength of these rooted branches was valuable for investigating the phylogeography of SCMV. There were a few discordant isolates that were in the same subgroup with isolates from a different global region. These few events could be explained by the recent expansion (since 2018) in the global trade of cereal crops such as sorghum and maize (PSD Online (usda.gov)) [37], as described in economic reports from the Global Agricultural Information Network (<https://gain.fas.usda.gov/>). It is worth hypothesizing that the few isolates that are discordant reflect the movement of agriculture seed and products between major exporters and their customers in other countries [3].

The recombination events identified in this study represent events that may be closely related to their phylogeography, with a few examples representing distinct geographic regions. These latter examples could represent single recombination events that occurred in a specific locale and were then distributed to different regions by trade among countries. Understanding when and where the recombination events occurred is hampered by the small number of SCMV isolates sequenced that are spatially distributed, compared to the thousands of species and isolates of begomoviruses, for example, where a single species may have 700–1000 fully sequenced isolates, allowing for robust statistical investigations of recombination hotspots [38, 39].

In recombination analysis, the largest number of isolates had breakpoints in the NIb-CP region, followed by

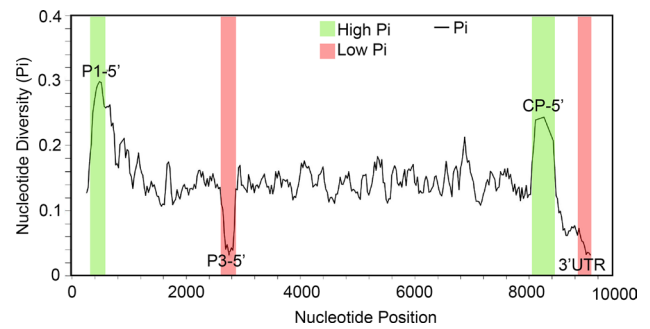


Fig. 4 Nucleotide diversity analysis of 139 SCMV genome sequences with a window size of 100 bp and step size of 25 bp. The graph shows the nucleotide diversity across the viral genome. Pi is the average number of nucleotide differences per site between two sequences. Highly polymorphic sequences are identified by pink boxes, and the most conserved regions are identified by green boxes.

the 6K1-CI region, and then the 6K2-VPg-Pro region. Fewer breakpoints occurred within the P1, HC-Pro, or P3/PIPO regions [14, 16, 17, 19, 36]. It is interesting that the selection pressures on the CI, VPg, Pro, and NIb regions are constrained by their molecular roles in virus replication. In contrast, the overall CP sequence, and in particular the hypervariable region of the CP, is constrained by host interactions and aphid vectoring [15]. Thus, recombination events in the NIb-CP region can have multiple effects on virus replication, vascular transport, and vectoring.

Here, combined phylogenetic and recombination analysis was used as a reference for studying isolates for which only the CP sequences are available. We used 161 SCMV CP sequences, including ones from Pakistan. The ancestral sequences of SCMV CP isolated from sugarcane showed different branch lengths according to their origin in Pakistan, India, Iran, Australia, Argentina, and China. The sequences from Pakistan showed a high degree of similarity to those of Australian isolates. The phylogenetic lineages more often reflect the particular niche, in this case the host plant species.

In summary, we looked at the currently available complete genome sequences of SCMV isolates representing different hosts and geographical regions. We observed evidence of extensive recombination among different SCMV isolates. The clustering of SCMV isolates into groups was more often due to a common host than to geography. This research is limited because full-length SCMV genome sequences are available from only a few countries. To capture the spatiotemporal dynamics of SCMV, it is essential to have a global effort to collect and sequence SCMV genomes in the future.

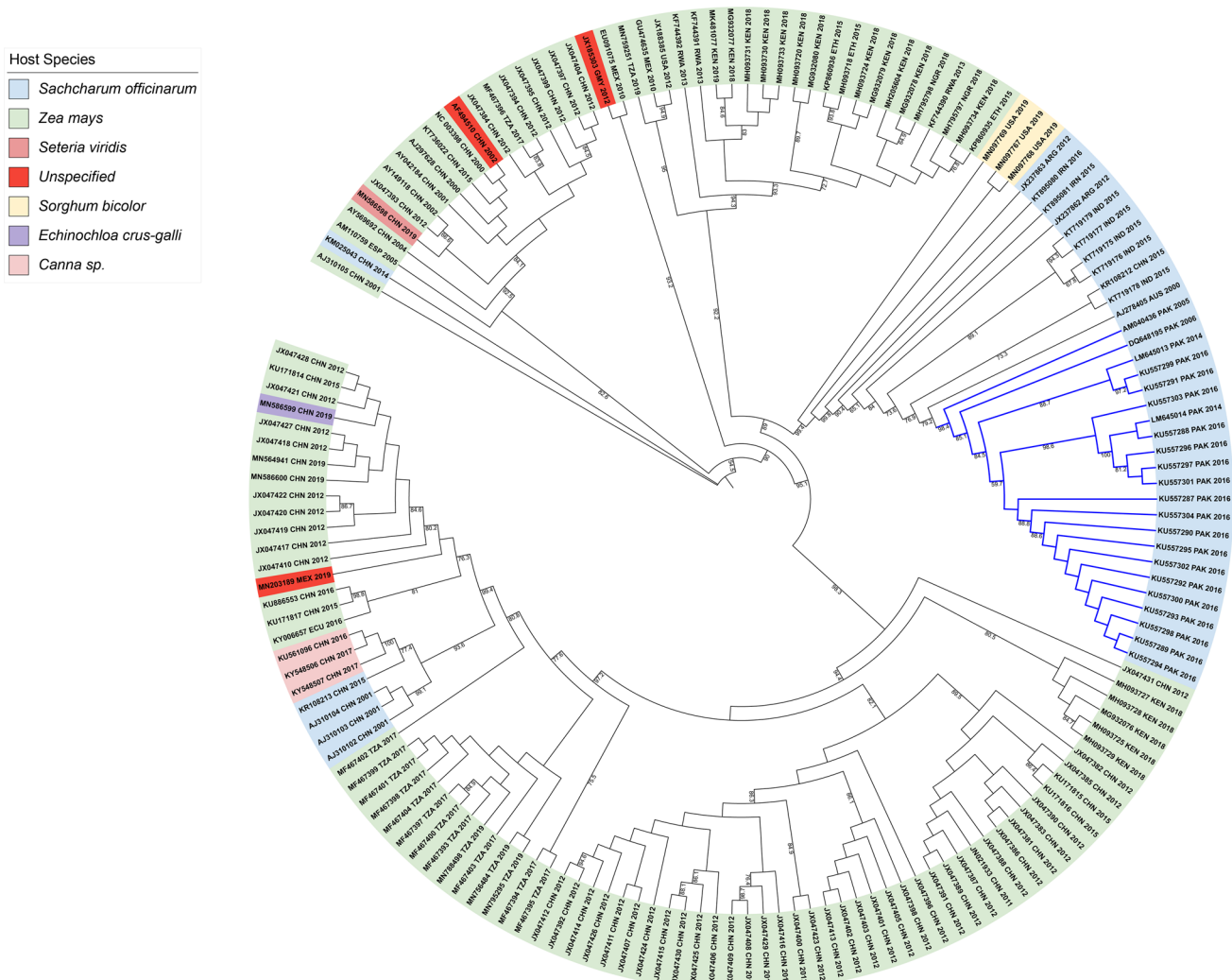


Fig. 5 Phylogenetic analysis based on the CP nucleotide sequences, using the ML method. The tree consists of 161 CP sequences identified here by NCBI accession number, followed by the country of origin

Supplementary Information The online version contains supplementary material available at <https://doi.org/10.1007/s00705-022-05572-x>.

Funding This work was supported by a Higher Education Commission (HEC) from Pakistan and a grant from NSF (IOS #1759034). Portions of this research were conducted using high-performance research computing resources provided by Texas A&M University (<https://hprc.tamu.edu>).

Availability of data and materials All genome nucleotide and poly-protein sequences were obtained from the NCBI GenBank database. The curated genome sequences and accession numbers underlying this study are provided in Supplementary Table S1. Khalid Muhammad was sponsored by Higher Education Commission of Pakistan. Khadija Ahmed was sponsored by an HEC NRP-5968 grant.

Declarations

Conflict of interest The authors declare no conflict of interest.

gin and date of NCBI entry. The colors indicate the host plant and are explained in the legend. The branches with sequences from Pakistan are shown in blue.

Open Access This article is licensed under a Creative Commons Attribution 4.0 International License, which permits use, sharing, adaptation, distribution and reproduction in any medium or format, as long as you give appropriate credit to the original author(s) and the source, provide a link to the Creative Commons licence, and indicate if changes were made. The images or other third party material in this article are included in the article's Creative Commons licence, unless indicated otherwise in a credit line to the material. If material is not included in the article's Creative Commons licence and your intended use is not permitted by statutory regulation or exceeds the permitted use, you will need to obtain permission directly from the copyright holder. To view a copy of this licence, visit <http://creativecommons.org/licenses/by/4.0/>.

References

1. Moury B, Desbiez C (2020) Host range evolution of potyviruses: a global phylogenetic analysis. *Viruses*. <https://doi.org/10.3390/v12010111>

2. Broadman HG (2006) Africa's Silk Road. The World Bank, Washington DC
3. Bruno L (2019) World Trade Statistical Review. *J Chem Inf Model* 53:1689–1699
4. Gibbs AJ, Hajizadeh M, Ohshima K, Jones RAC (2020) The potyviruses: an evolutionary synthesis is emerging. *Viruses* 12:132. <https://doi.org/10.3390/v12020132>
5. Gibbs A, Ohshima K (2010) Potyviruses and the digital revolution. *Annu Rev Phytopathol*. <https://doi.org/10.1146/annurev-phyto-073009-114404>
6. Gibbs AJ, Ohshima K, Phillips MJ, Gibbs MJ (2008) The prehistory of potyviruses: their initial radiation was during the dawn of agriculture. *PLoS One*. <https://doi.org/10.1371/journal.pone.0002523>
7. Li Y, Liu R, Zhou T, Fan Z (2013) Genetic diversity and population structure of Sugarcane mosaic virus. *Virus Res* 171:242–246. <https://doi.org/10.1016/j.virusres.2012.10.024>
8. Wijayasekara DS, Ali A (2019) Complete genome characterization and coat protein genealogy of isolates of Maize dwarf mosaic virus from Johnsongrass and maize in Oklahoma and Missouri. *Plant Dis*. <https://doi.org/10.1094/pdis-06-19-1274-re>
9. Chauhan RP, Rajakaruna P, Verchot J (2015) Complete genome sequence of nine isolates of canna yellow streak virus reveals its relationship to the sugarcane mosaic virus (SCMV) subgroup of potyviruses. *Arch Virol* 160:837–844. <https://doi.org/10.1007/s00705-014-2327-5>
10. Chauhan RP, Wijayasekara D, Webb MA, Verchot J (2015) A reliable and rapid multiplex RT-PCR assay for detection of two potyviruses and a pararetrovirus infecting canna plants. *Plant Dis* 99:1695–1703. <https://doi.org/10.1094/PDIS-02-15-0225-RE>
11. Zakubanskiy A, Mitrofanova I, Sheveleva A, Chirkov S (2018) Analysis of canna yellow streak virus complete genomes provides evidence of multiple intraspecies recombination events. *J Plant Pathol* 100:575–580. <https://doi.org/10.1007/s42161-018-0111-1>
12. Betancourt C, Salomón C, Moreno Henao JM et al (2020) First report of Sugarcane mosaic virus in achira (*Canna edulis* Ker.) in Nariño. *Colombia Rev UDCA Actual Divulg Científica* 23:1–8. <https://doi.org/10.31910/rudca.v23.n1.2020.1461>
13. Mitrofanova IV, Zakubanskiy AV, Mitrofanova OV (2018) Viruses infecting main ornamental plants: an overview. *Ornam Hortic* 24:95–102. <https://doi.org/10.14295/oh.v24i2.1199>
14. He Z, Dong Z, Gan H (2020) Genetic changes and host adaptability in sugarcane mosaic virus based on complete genome sequences. *Mol Phylogenet Evol* 149:106848. <https://doi.org/10.1016/j.ympev.2020.106848>
15. Nigam D, LaTourrette K, Souza PFN, Garcia-Ruiz H (2019) Genome-wide variation in potyviruses. *Front Plant Sci* 10:1–28. <https://doi.org/10.3389/fpls.2019.01439>
16. Braidwood L, Müller SY, Baulcombe D (2019) Extensive recombination challenges the utility of Sugarcane mosaic virus phylogeny and strain typing. *Sci Rep* 9:20067. <https://doi.org/10.1038/s41598-019-56227-y>
17. Xu DL, Park JW, Mirkov TE, Zhou GH (2008) Viruses causing mosaic disease in sugarcane and their genetic diversity in southern China. *Arch Virol* 153:1031–1039. <https://doi.org/10.1007/s00705-008-0072-3>
18. Akbar S, Tahir M, Afghan S (2017) Characterization of coat protein (CP) gene of sugarcane mosaicvirus (SCMV) from isolates of Pakistan and its phylogenetic relationships. *J Anim Plant Sci* 27:268–276
19. Moradi Z, Nazifi E, Mehrvar M (2017) Occurrence and evolutionary analysis of coat protein gene sequences of Iranian isolates of Sugarcane mosaic virus. *Plant Pathol J* 33:296–306. <https://doi.org/10.5423/PPJ.OA.10.2016.0219>
20. Silva-Rosales L, Alcalá-Briseño R, Espejel F (2015) Sugarcane mosaic. pp 131–143
21. Rashid N, Iqbal J (2011) (Scmv) variants from naturally infected sugarcane crop in Pakistan. *Pak J Bot* 43:1157–1162
22. Yasmin T, Iqbal S, Farooq A et al (2011) Prevalence, distribution and incidence of major sugarcane infecting viruses in Nwfp and Punjab. *J Phytopathol* 23:2430
23. Sajed A, Idrees AN, Arfan A et al (2014) Genetic variability in coat protein gene of sugarcane mosaic virus in Pakistan and its relationship to other strains. *Afr J Biotechnol* 13:3950–3965. <https://doi.org/10.5897/AJB2014.13691>
24. Kumar S, Stecher G, Li M et al (2018) MEGA X: Molecular evolutionary genetics analysis across computing platforms. *Mol Biol Evol* 35:1547–1549. <https://doi.org/10.1093/molbev/msy096>
25. Edgar RC (2004) MUSCLE: A multiple sequence alignment method with reduced time and space complexity. *BMC Bioinformatics*. <https://doi.org/10.1186/1471-2105-5-113>. 5:
26. Darriba D, Taboada GL, Doallo R, Posada D (2011) ProtTest 3: Fast selection of best-fit models of protein evolution. *Bioinformatics*. <https://doi.org/10.1093/bioinformatics/btr088>
27. Letunic I, Bork P (2019) Interactive Tree Of Life (iTOL) v4: recent updates and new developments. *Nucleic Acids Res* 47:W256–W259. <https://doi.org/10.1093/nar/gkz239>
28. Samson S, Lord É, Makarenkov V (2021) Sequence analysis SimPlot ++: a Python application for representing sequence similarity and detecting recombination. <https://doi.org/10.48550/arXiv.2112.09755>. arXivLabs
29. Posada D (2002) Evaluation of methods for detecting recombination from DNA sequences: Empirical data. *Mol Biol Evol* 19:708–717. <https://doi.org/10.1093/oxfordjournals.molbev.a004129>
30. Martin DP, Murrell B, Golden M et al (2015) RDP4: Detection and analysis of recombination patterns in virus genomes. *Virus Evol* 1:1–5. <https://doi.org/10.1093/ve/vev003>
31. Pérez-Losada M, Arenas M, Galán JC et al (2015) Recombination in viruses: Mechanisms, methods of study, and evolutionary consequences. *Infect Genet Evol* 30:296–307. <https://doi.org/10.1016/j.meegid.2014.12.022>
32. Librado P, Rozas J (2009) DnaSP v5: A software for comprehensive analysis of DNA polymorphism data. *Bioinformatics* 25:1451–1452. <https://doi.org/10.1093/bioinformatics/btp187>
33. Som A (2014) Causes, consequences and solutions of phylogenetic incongruence. *Brief Bioinform* 16:536–548. <https://doi.org/10.1093/bib/bbu015>
34. Kosakovsky Pond SL, Posada D, Gravenor MB et al (2006) GARD: a genetic algorithm for recombination detection. *Bioinformatics* 22:3096–3098. <https://doi.org/10.1093/bioinformatics/btl474>
35. Chung BYW, Miller WA, Atkins JF, Firth AE (2008) An overlapping essential gene in the Potyviridae. *Proc Natl Acad Sci USA* 105:5897–5902. <https://doi.org/10.1073/pnas.0800468105>
36. Xie X, Chen W, Fu Q et al (2016) Molecular variability and distribution of Sugarcane mosaic virus in Shanxi, China. *PLoS One* 11:1–12. <https://doi.org/10.1371/journal.pone.0151549>
37. USDA - United States Department of Agriculture (2018) Grain: World markets and trade table of contents. USDA, Washington, pp 1–44
38. García-Arenal F, Zerbini FM (2019) Life on the edge: Geminiviruses at the interface between crops and wild plant hosts. *Annu Rev Virol* 6:411–433. <https://doi.org/10.1146/annurev-virology-092818-015536>
39. Rodríguez-Negrete EA, Morales-Aguilar JJ, Domínguez-Duran G et al (2019) High-throughput sequencing reveals differential begomovirus species diversity in non-cultivated plants in northern-pacific Mexico. *Viruses* 11:1–24. <https://doi.org/10.3390/v11070594>