



Research article

The utility of joinpoint regression for estimating population parameters given changes in population structure

Daniel Gillis^a, Brandon P.M. Edwards^{b,*}

^a University of Guelph, School of Computer Science, 50 Stone Road East, Guelph, ON N1G2W1 Canada

^b University of Guelph, Department of Mathematics & Statistics, 50 Stone Road East, Guelph, ON N1G2W1 Canada



ARTICLE INFO

Keywords:

Applied mathematics
Computational mathematics
Joinpoint
Surplus production model
Simulation study
Population parameter

ABSTRACT

The method of joinpoint regression has been used in numerous domains to assess changes in time series data, including such things as cancer mortality rates, motor vehicle collision mortalities, and disease risk. To help improve estimation of population parameters for use in ecological risk assessment and management, we present a simulation and analysis to describe the utility of this method for the ecological domain. We demonstrate how joinpoint regression can accurately identify if the population structure changes based on time series of abundance, as well as identify when this change occurs. In addition, we compare and contrast population parameter estimates derived through joinpoint and surplus production methods to those derived from standard surplus production methods alone. When considering a change point at 32 years (out of a 64 year simulation), the joinpoint regression model was able, on average, to estimate a joinpoint time of 32.31 years with a variance of 6.82 and 95% confidence interval for the mean relative bias of (0.0085, 0.0112). The model was able to consistently estimate population parameters, with variance of these estimations decreasing as the change in these population parameters increased. We conclude that joinpoint regression be added to the list of methods employed by those who assess ecological risk to allow for a more accurate and complete understanding of population dynamics.

1. Introduction

As the global population approaches an estimated 9 billion people by 2030 (Department of Economic & Social Affairs: Population Division, 2017), the need to sustainably manage populations of species that provide food or economic value to communities becomes paramount. This is particularly important to remote Indigenous populations that rely on country-food for subsistence, wellbeing, tradition, and culture. Unfortunately, the literature is full of examples where over-harvesting, loss of breeding-habitat, or other anthropogenic activities have negatively affected the sustainability of a wild animal population (see, for example (Flockhart et al., 2014; Poudyal et al., 2009; Rushing et al., 2016)). Two recent and well known Canadian examples include the decline of the northern caribou (*Rangifer tarandus groenlandicus/Rangifer tarandus granti*), and the collapse of the Atlantic cod (*Gadus morhua*) industry of Newfoundland and Labrador. In the former case, caribou numbers have fallen significantly in the last 20 years, with current population estimates 70% lower than observed in the late nineties (Parlee et al.,

2018). Recent research has indicated that the population collapse is likely attributed to the effect of mining operations in Northern Canada (Parlee et al., 2018). In the latter case, increased harvesting led to the collapse of the Atlantic cod population and industry in the early 1990s (Hutchings and Myers, 1994; Myers et al., 1996). After almost 30 years, the population has not returned to its former levels (Pederson et al., 2017). In both cases, the effects have been profound and widespread, negatively affecting employment, local economies, and the various dimensions of health and wellbeing (Gien, 2000; Prowse et al., 2009).

Risk assessment models, such as the surplus production model, the stage-structured model, or the agent-based model, are often used by managers and decision makers to assess and evaluate the status of animal populations (Hilborn and Walters, 2001; Rose et al., 2017). While varying in complexity, the models provide managers with estimates of population parameters which can be used to understand the current state of the population and to project the effect of various management decisions on the sustainability of the population in question.

* Corresponding author.

E-mail addresses: dgillis@uoguelph.ca (D. Gillis), edwardsb@uoguelph.ca (B.P.M. Edwards).

<https://doi.org/10.1016/j.heliyon.2019.e02515>

Received 5 October 2018; Received in revised form 6 June 2019; Accepted 19 September 2019

1.1. Surplus production models

The surplus production models, also known as biomass dynamic models, is a simple yet effective model used in fishery science for stock assessment (Hilborn and Walters, 2001). In surplus production models, the population's biomass B at time t given population growth rate r , carrying capacity K , and harvest C is given by:

$$B_t = B_{t-1} + rB_{t-1} \left(1 - \frac{B_{t-1}}{K}\right) - C_{t-1} \tag{1}$$

where the harvest C at time t given catchability coefficient q and harvest efforts E is given by:

$$C_t = qB_t E_t \tag{2}$$

In most cases, these parameters are assumed to be constant across the time series, or drawn from a particular distribution (Hilborn and Walters, 2001). Using estimates of these population parameters allows managers to estimate the population's maximum sustainable yield for a particular period of time (Polacheck et al., 1993). This information can be used to evaluate management decisions under the assumption that the estimates are estimated well, and that there will be no change to them in the foreseeable future.

However, standard surplus production models and other risk assessment models fail to account for sudden changes in population dynamics that result from, for example, anthropogenic activities. Changes to migration pathways, loss of breeding grounds, or other issues associated with industrial development, climate change, or pollution (for example) could suddenly alter the dynamics and long-term stability of a population. Failure to consider changes to the dynamics of the population during the modelling process might lead to estimates of population parameters that fail to provide realistic projections of management decisions. For animal populations already suffering from the effects of anthropogenic activities, management actions based on poorly assessed data could be disastrous. As such, there is a need to explore risk models that allow for changes in population structure within an observed time series of data, as this could improve our understanding of the dynamics of a population and improve our ability to manage it effectively and sustainably (Sprenst, 1961).

1.2. Joinpoint regression

One method that has been identified as a valuable tool for making inferences about changes in trends over time is joinpoint regression (see for example Barrio et al. (2015); Lopez-Campos et al. (2014); Bosetti et al. (2011); Long et al. (2014); Yu et al. (2009)). It has been used, for example, to accurately estimate changes in rates of driver deaths after the implementation of new traffic regulations (Barrio et al., 2015), to estimate changing trends in cancer incidence in countries such as Canada, United Kingdom, Japan, and Italy (among many other countries) (Jiang et al., 2010; Qiu et al., 2009; Crispo et al., 2013; Wilson et al., 2017), and to analyze changes in suicide rates in Denmark (Dyvesether et al., 2018). These studies, all of which assess changes in time series data that happen following various interventions or changes in external conditions, suggest the potential utility of joinpoint regression to identify and evaluate when/if changes in population parameters occur. To our knowledge, however, joinpoint regression has not been used in this manner during the risk assessment process of populations of animals.

Joinpoint regression, also known as change point regression or segmented regression, assumes that data can be divided into subsets - each with their own unique linear trend. For example, if we were to analyze a time series with two different trends, we might find that when $t < t^*$, the model has a particular intercept and slope, and when $t \geq t^*$, the model would have a different intercept and slope. In this instance, t^* represents the joinpoint; a point in time when the population parameters change. In a population setting, joinpoint regression could be used

to improve models in the case where anthropogenic activities, for example, move a species from a period of stability to a period of decline.

In general, given data vector $\mathbf{y} = (y_1, y_2, \dots, y_n)$ with covariate vector $\mathbf{x} = (x_1, x_2, \dots, x_n)$, and joinpoint vector $\boldsymbol{\tau} = (\tau_1, \dots, \tau_k)$, a joinpoint model is described as:

$$y_i = \begin{cases} \beta_0 + \beta_1 x_i + \epsilon_i, & x_i < \tau_1 \\ \beta_0 + \beta_1 x_i + \delta_1(x_i - \tau_1) + \epsilon_i, & \tau_1 \leq x_i < \tau_2 \\ \vdots & \vdots \\ \beta_0 + \beta_1 x_i + \delta_{k-1}(x_i - \tau_{k-1}) + \epsilon_i, & \tau_{k-1} \leq x_i < \tau_k \\ \beta_0 + \beta_1 x_i + \delta_k(x_i - \tau_k) + \epsilon_i, & \tau_k \leq x_i \end{cases}, \tag{3}$$

where $\beta_0, \beta_1, \delta_1, \dots, \delta_k$ are regression coefficients (with $\delta_1, \dots, \delta_k$ being slope differences given time period τ) and $\epsilon_i \sim N(0, \sigma^2)$. That is, the joinpoint model assumes linearity, and errors ϵ_i are independent and normally distributed (Sprenst, 1961; Hinkley, 1971; Jiang et al., 2010).

This paper will explore the use of joinpoint regression analysis in the area of ecological risk assessment. More specifically, the goal of this paper is to determine the effectiveness of joinpoint regression to improve the estimates of population parameters derived from the standard surplus production model. To achieve this goal it becomes necessary to satisfy the following objectives: 1) determine if joinpoint regression can be used to identify if and when population structure changes occur based on time series of abundance, and 2) compare and contrast population parameter estimates derived through joinpoint and surplus production methods to those derived from standard surplus production methods alone.

2. Methods

To evaluate the effectiveness of joinpoint regression to improve the estimation of population parameters over a range of situations, a standard surplus production model as in Equation (1) was developed to allow for a change in the growth rate (r), and the catchability coefficient (q), in year 32 of a 64 year time series. Specifically, Equation (1) was reformulated in terms of a general joinpoint equation as in Equation (3), and data were simulated from the standard surplus production model

$$B_t = \begin{cases} B_{t-1} + r_1 B_{t-1} \left(1 - \frac{B_{t-1}}{K}\right) - C_{t-1}, & t < 32 \\ B_{t-1} + r_2 B_{t-1} \left(1 - \frac{B_{t-1}}{K}\right) - C_{t-1}, & t \geq 32 \end{cases}, \tag{4}$$

where B , r (separated into r_1 and r_2), K , and C are as described in Equation (1), and t is the discrete time step in years. Harvest C as in Equation (2) was also reformulated in terms of a general joinpoint equation as in Equation (3) to arrive at

$$C_t = \begin{cases} q_1 B_t E_t e^{\epsilon_t}, & t < 32 \\ q_2 B_t E_t e^{\epsilon_t}, & t \geq 32 \end{cases}, \tag{5}$$

where E_t is the total yearly effort in year t measured in metres of net, and sampled from a Poisson distribution with mean parameter $\lambda = 10,000$, $\epsilon_t \sim N(0, 10^{-1})$ is a random normal variate, and q_1 and q_2 are the catchability coefficients for period 1 and period 2, respectively.

For each simulation, r_1 , r_2 , q_1 , and q_2 were randomly sampled as follows: r_1 was randomly drawn from the set {0.55, 0.60, 0.65, 0.70, 0.75, 0.80, 0.85, 0.90}, r_2 was randomly drawn from the set {0.20, 0.25, 0.30, 0.35, 0.40, 0.45, 0.50, 0.55}, q_1 was randomly drawn from the set $\{1.0 \times 10^{-5}, 1.5 \times 10^{-5}, 2.0 \times 10^{-5}, 2.5 \times 10^{-5}\}$, and q_2 was randomly drawn from the set $\{2.0 \times 10^{-5}, 2.5 \times 10^{-5}, 3.0 \times 10^{-5}\}$. The sets were created to ensure $r_1 \geq r_2$, and to allow for a range of changes to growth rate, and to the catchability coefficient (identified by $\delta_r = r_1 - r_2$, and $\delta_q = q_1 - q_2$, respectively) at time $t = 32$.

Once the growth rates and catchability coefficients were selected, B_0 was set to 1,500,000, and K to 2,000,000. Equations (4) and (5) were updated with r_1 , q_1 , B_0 , and K , and allowed to run for 32 years to allow the simulated population to stabilize (see *stabilization period* in Fig. 1).

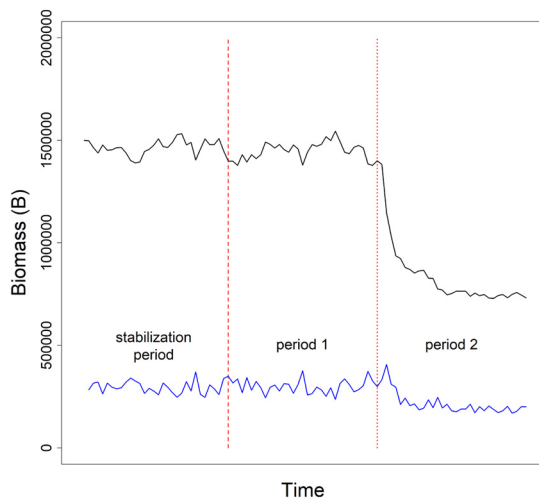


Fig. 1. Simulated time series of biomass (black line) and catch (blue line) data by year. Data were generated assuming $B_0 = 1,500,000$, and $K = 2,000,000$. For each simulation, 32 years of data (*stabilization period*, to the left of the dashed red line) were generated to ensure the simulated population was stable. Following this, data were generated assuming growth rate r_1 and catchability coefficient q_1 up to year 64 (*period 1*, between the dashed and dotted red lines). Finally, the population structure was updated to allow a growth rate of r_2 and catchability coefficient of q_2 (*period 2*, to the right of the dotted red line).

At the end of the 32 year stabilization period, t was reset to 0, and B_0 was set to B_{32} (see *period 1* in Fig. 1). The simulation was allowed to run for another 32 years, at which r_1 and q_1 were updated to r_2 and q_2 . Finally, the simulation was allowed to run for another 32 years. Time series of both B and C were extracted and processed for each of the following three scenarios:

1. **Scenario 1 (jointpoint ignored):** the 64 year time series catch data were analyzed using a standard surplus production model, ignoring the jointpoint at time $t = 32$,
2. **Scenario 2 (jointpoint estimated):** the 64 year time series catch data were analyzed using the surplus production model described by Equations (4) and (5), using an estimated jointpoint, and
3. **Scenario 3 (jointpoint known):** the 64 year time series catch data were analyzed using the surplus production model described by Equations (4) and (5), assuming that the true jointpoint was known.

To estimate the growth rate(s) and catchability coefficient(s), Equation (4) was multiplied by $\frac{1}{K}$ and then B_t was expressed as a proportion of K (i.e. $P_t = \frac{B_t}{K}$), and Equation (5) was re-expressed in terms of catch per unit effort I_t (i.e. $I_t = \frac{C_t}{E_t}$):

$$P_t = \begin{cases} P_{t-1} + r_1 P_{t-1} (1 - P_{t-1}) - \frac{C_{t-1}}{K}, & t < 32 \\ P_{t-1} + r_2 P_{t-1} (1 - P_{t-1}) - \frac{C_{t-1}}{K}, & t \geq 32 \end{cases} \quad (6)$$

$$I_t = \begin{cases} q_1 P_t K, & t < 32 \\ q_2 P_t K, & t \geq 32 \end{cases} \quad (7)$$

The model was implemented using the JAGS software (see JAGS Code in Supplementary Files), and evaluated using the *rjags* and *coda* packages in R (see R Code in Supplementary Files) (Plummer, 2015; R Core Team, 2014; Plummer et al., 2006). Bayesian priors were assigned assuming P_t and I_t had log normal distributions with means as described for each scenario below. To ensure reasonable samples for P_t , the distributions were truncated above and below. Finally, distributions for P_t and I_t were assigned variances σ and τ , respectively. Both σ^{-1} and τ^{-1} were assigned Gamma hyper priors.

Simulated catch and harvest data were analyzed for each of the scenarios in the following ways:

- **Scenario 1 (jointpoint ignored):** Equations (6) and (7) were updated to include a single growth rate, and a single catchability coefficient. That is, r_1 and r_2 were replaced with r , and q_1 and q_2 were replaced with q . Further, log normal priors for P_t and I_t were assigned means of $P_{t-1} + r P_{t-1} (1 - P_{t-1}) - \frac{C_{t-1}}{K}$, and $q P_t K$.
- **Scenario 2 (jointpoint estimated):** Equations (6) and (7) were updated for scenario 2 to reflect the case where the jointpoint was estimated. Specifically, letting t^* represent the estimated jointpoint, we replaced r_1 and q_1 with r_1^* and q_1^* when $t < t^*$, and r_2 with r_2^* and q_2 with q_2^* when $t \geq t^*$. Log normal priors were assigned means of $P_{t-1} + r_i^* P_{t-1} (1 - P_{t-1}) - \frac{C_{t-1}}{K}$, and $q_i^* P_t K$, respectively (where $i = 1$ if $t < t^*$, and $i = 2$ if $t \geq t^*$). To estimate the time of the jointpoint required for scenario 2, a simple linear model (i.e. $I_t = \beta_0 + \beta_1 t$) was created, and used with the *segmented* package in R (R Core Team, 2014; Muggeo, 2003, 2008). Although the jointpoint was known to occur at time $t = 32$, the *segmented* function was parameterized and initialized to allow for two jointpoints. This was repeated five times, with initialized jointpoint values of (16, 48), (18, 46), (20, 44), (22, 42), and (24, 40). The decision to use two jointpoints would account for changes to population dynamics that might present themselves over the course of several years, instead of instantaneously. In this way, the *segmented* function might identify three distinct periods within the population structure, instead of simply pre and post jointpoint. For example, there could be a stable period of abundance prior to the jointpoint, followed by a period where abundance decreases or increases to a new period of stability. Estimated jointpoints t_{1i}^* and t_{2i}^* , where $t_{1i}^* \leq t_{2i}^*$, were saved for each initialization set ($i = 1, \dots, 5$). The rounded average of the smaller jointpoint from each of the initialization sets was used to parameterize the JAGS model described previously. That is, t^* was set $\frac{1}{5} \sum_{i=1}^5 t_{1i}^*$, rounded to the nearest integer value.
- **Scenario 3 (jointpoint known):** Analysis proceeded using Equations (6) and (7) without changes. Log normal priors were assigned means of $P_{t-1} + r_i^* P_{t-1} (1 - P_{t-1}) - \frac{C_{t-1}}{K}$, and $q_i^* P_t K$, respectively (where $i = 1$ if $t < 32$, and $i = 2$ if $t \geq 32$).

In the cases where the jointpoint analyses would not converge to a solution, the simulation was rejected and new draws for r_1 , r_2 , q_1 , and q_2 were made. In total, 13,513 simulations were conducted. Output from each of the three scenarios were summarized using the *coda* package in R (R Core Team, 2014; Plummer et al., 2006). Results were analyzed to evaluate the ability of the jointpoint regression to i) estimate the true jointpoint time t^* , ii) estimate the true jointpoint versus the change in growth rate between periods 1 and 2 (i.e. $\delta_r = |r_1 - r_2|$), iii) estimate the true jointpoint versus the change in catchability coefficients between periods 1 and 2 (i.e. $\delta_q = |q_1 - q_2|$), iv) identify the length of the transition period during which a stable population appeared following the jointpoint (i.e. $t_1^* - t_2^*$), where t_1^* has been previously defined, and $t_2^* = \frac{1}{5} \sum_{i=1}^5 t_{2i}^*$ - see Fig. 2 - and, v) improve the estimates of growth rate and catchability compared to standard methods (i.e. when jointpoints are ignored), or when the jointpoint is known *a priori*.

All simulations and analyses were completed using R: A Language and Environment for Statistical Computing (R Core Team, 2014) with a 13" MacBook Pro with a 2.7 GHz Intel Core i5 processor, and 16 GB 1867 MHz DDR3 RAM.

3. Results

Ignoring the randomly selected growth rates and catchability coefficients, the average estimated jointpoints t_1^* and t_2^* were 32.31 and 39.50, with variances of 6.82 and 14.05, respectively. The mean relative bias of t_1^* across all simulations was slightly positive. Specifically, the 95% confidence interval for the mean relative bias was (0.0085, 0.0112).

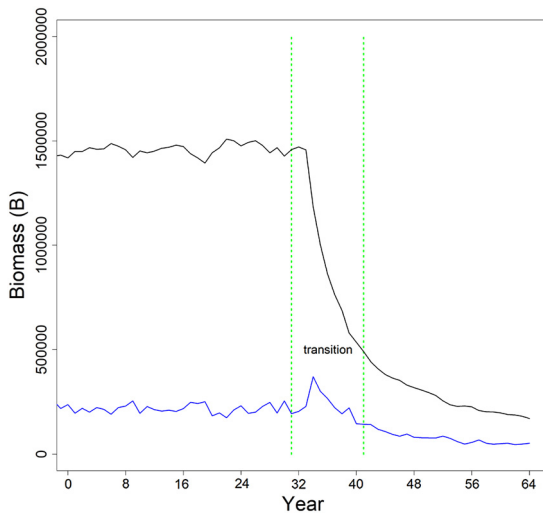


Fig. 2. Estimated joinpoints (green line) given simulated time series of abundance (black line) and catch (blue line) data by year. Catch data were simulated assuming $B_0 = 1,500,000$, and $K = 2,000,000$ for 64 years. At time $t = 32$ years, the population dynamics were adjusted to allow for a change in growth rate and catchability coefficient. The transition period (identified as the period between the two estimated joinpoints) represents the estimated length of time for the population to restabilize following a change in the dynamics.

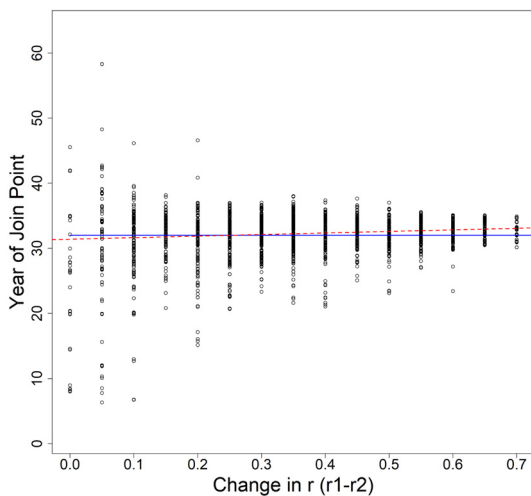


Fig. 3. Estimated year of joinpoints (black dots) for each simulation versus the change in growth rate (pre and post joinpoint). The blue line represents the true joinpoint value of $t = 32$ years. The red dashed line represents a simple linear regression of year of joinpoint versus change in growth rate.

Since t_2^* is an artifact of the analytical method and not reflective of a known value, relative bias can not be calculated. The average estimated joinpoint is consistent regardless of the magnitude of δ_r , however, the variance of the estimated values decreases as δ_r increases (see Fig. 3).

For low values of δ_r (e.g. $\delta_r < 0.10$), variance estimates are approximately 5 times that of those seen for $\delta_r \geq 0.10$. There is a slight upward trend in mean estimated joinpoint with increasing magnitude of δ_q . The variance of the estimated joinpoints appears to be stable except in the case of larger δ_q , where the variation appears to double. However, there are fewer simulations with high δ_q , so this uptick may itself be a deviation from the norm. On average the transition period is approximately 7 years; a pattern which is consistent regardless of the magnitude of δ_r and δ_q . That is, following a change in growth rate and/or catchability coefficient, it takes on average 7 years for the population to restabilize. However, the transition period ranges in length from as little as 1.16 years, to as much as 50.85 years. Shorter transi-

Table 1

Mean relative bias of growth rate r_1 (and standard deviation) given $\delta_r = r_1 - r_2$ bins, where r_1 is the growth rate prior to the joinpoint, and r_2 is the growth rate following the joinpoint, by scenario. Scenario 1–3 indicate analysis assuming no joinpoint, using the estimated joinpoint, or using the true joinpoint, respectively.

Bin	Scenario 1	Scenario 2	Scenario 3
$\delta_r \in [0.00, 0.20]$	-13.73 (0.46)	2.28 (0.99)	27.36 (0.43)
$\delta_r \in (0.20, 0.45]$	-33.80 (0.49)	-4.96 (0.69)	18.06 (0.33)
$\delta_r \in (0.45, 0.70]$	-51.68 (0.89)	-13.11 (0.79)	4.75 (0.25)

Table 2

Mean relative bias of growth rate r_2 (and standard deviation) given $\delta_r = r_1 - r_2$ bins, where r_1 is the growth rate prior to the joinpoint, and r_2 is the growth rate following the joinpoint, by scenario. Scenario 1–3 indicate analysis assuming no joinpoint, using the estimated joinpoint, or using the true joinpoint, respectively.

Bin	Scenario 1	Scenario 2	Scenario 3
$\delta_r \in [0.00, 0.20]$	0 (NaN)	4.85 (0.45)	1.85 (0.29)
$\delta_r \in (0.20, 0.45]$	0 (NaN)	-3.14 (0.35)	0.41 (0.10)
$\delta_r \in (0.45, 0.70]$	0 (NaN)	-0.70 (0.69)	10.08 (0.18)

tion periods are associated with higher values of δ_r , and higher values of δ_q .

Distributions of the relative bias of the growth rate parameter r_1 are provided in Fig. 4 for each scenario. For simplicity, the relative bias estimates are summarized given the magnitude of the change in growth before and after the joinpoint. Specifically, they are grouped based on the δ_r (see caption of Fig. 4 for binning).

The mean relative bias for r_1 is negative for all binning situations when the experiments were analyzed assuming no change to the population dynamics structure. That is, when there is no change in the growth rate or the catchability coefficient (i.e. Scenario 1), r_1 is significantly underestimated, with average relative bias estimates for the largest δ_r of -51%. The magnitude of the relative bias increases as δ_r increases. Further, the relative bias also increases across scenarios within the δ_r bins. That is, for all δ_r bins, the relative bias is largest when using the true joinpoint. This is followed by the experiments using an estimated joinpoint, and finally by the experiments that ignored the joinpoint. For all δ_r bins, the average relative bias was positive, but decreased as δ_r increased. Average relative bias estimates can be found in Table 1.

As outlined in Table 1, the standard deviations of the mean relative bias increase as δ_r increases in Scenario 1, decrease as δ_r increases in Scenario 3, and fluctuates in Scenario 2.

Since Scenario 1 assumes that the population is governed by only one growth rate (e.g. r_1), bias estimates could not be obtained for r_2 for this scenario. Regardless, estimates could be determined for Scenarios 2 and 3 (see Fig. 5). Relative bias estimates for r_2 in Scenario 2 decrease as δ_r increases, but increase as δ_r increases for Scenario 3. The pattern of relative bias for r_2 matches the pattern of relative bias for r_1 given Scenario 2, but is opposite of that for Scenario 3. Standard deviations follow a similar pattern (Table 2).

Distributions of the relative bias of the catchability coefficient parameter q_1 are provided in Fig. 6 for each scenario. For simplicity, the relative bias estimates are summarized given the magnitude of change in catchability before and after the joinpoint and group based on the δ_q (see caption of Fig. 6 for binning).

The mean relative bias for q_1 is positive for all binning situations when the experiments were analyzed assuming no change to the population dynamics structure. That is, when there is no change in the growth rate or the catchability coefficient (Scenario 1), q_1 is significantly overestimated. In Scenarios 1 and 2, the magnitude of the relative bias appears to decrease as δ_q increases; in Scenario 3, the magnitude of the relative bias appears to increase as δ_q increases. Further, the relative bias decreases across scenarios within the δ_q bins. That is, for all δ_q bins, the relative bias is smallest when using the true joinpoint. This is

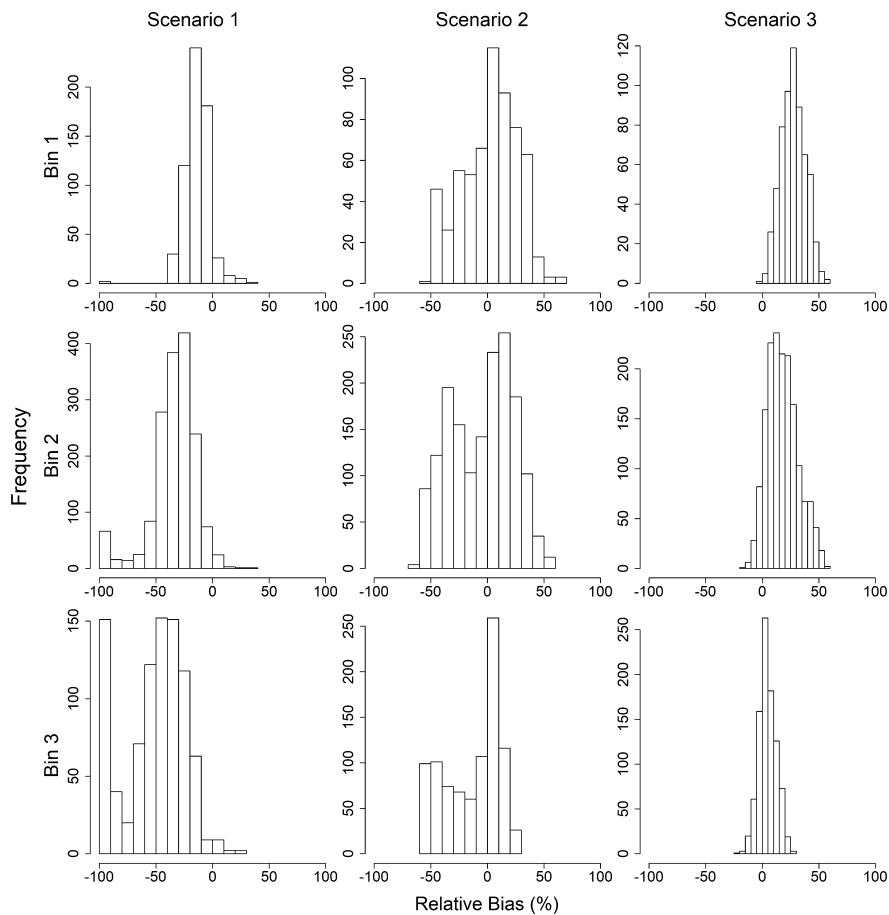


Fig. 4. Relative bias (%) of growth rate r_1 given $\delta_r = r_1 - r_2$, where r_1 is the growth rate prior to the joinpoint, and r_2 is the growth rate following the joinpoint, by scenario. Delta growth bins 1–3 (rows) include experiments where $\delta_r \leq 0.20$, $0.20 < \delta_r \leq 0.45$, and $\delta_r > 0.45$, respectively. Scenario 1–3 (columns) indicate analysis assuming no joinpoint, using the estimated joinpoint, or using the true joinpoint, respectively.

Table 3

Mean relative bias of catchability coefficient q_1 (and standard deviation) given $\delta_q = q_1 - q_2$ bins, where q_1 is the catchability coefficient prior to the joinpoint, and q_2 is the catchability coefficient following the joinpoint, by scenario. Scenario 1–3 indicate analysis assuming no joinpoint, using the estimated joinpoint, or using the true joinpoint, respectively.

Bin	Scenario 1	Scenario 2	Scenario 3
$\delta_q \leq -1.5 \times 10^{-5}$	116.83 (2.58)	90.69 (1.67)	-1.80 (0.12)
$-1.5 \times 10^{-5} < \delta_q \leq -5.0 \times 10^{-6}$	72.36 (1.49)	17.97 (0.83)	-6.48 (0.16)
$\delta_q > -5.0 \times 10^{-6}$	68.06 (1.26)	-9.81 (0.27)	-10.22 (0.25)

followed by the experiments using an estimated join, and finally by the experiments that ignored the joinpoint. For all δ_q bins, the average relative bias was positive, but decreased as δ_q increased. Average relative bias estimates can be found in Table 3

As outlined in Table 3, the standard deviations of the mean relative bias decrease as δ_q increases in Scenario 1 and 2, and increases as δ_q increases in Scenario 3.

Since scenario 1 assumes that the population is governed by only one catchability coefficient (e.g. q_1), bias estimates could not be determined for q_2 for this scenario. Regardless, estimates could be determined for Scenarios 2 and 3 (Fig. 7). Relative bias estimates for q_2 in Scenario 2 increase as δ_q increases, but decrease as δ_q increases for Scenario 3 (Table 4).

4. Discussion

The goal of this paper was to present and evaluate the utility of joinpoint regression analysis in the area of ecological risk assessment and

Table 4

Mean relative bias of catchability coefficient q_2 (and standard deviation) given $\delta_q = q_1 - q_2$ bins, where q_1 is the catchability coefficient prior to the joinpoint, and q_2 is the catchability coefficient following the joinpoint, by scenario. Scenario 1–3 indicate analysis assuming no joinpoint, using the estimated joinpoint, or using the true joinpoint, respectively.

Bin	Scenario 1	Scenario 2	Scenario 3
$\delta_q \leq -1.5 \times 10^{-5}$	0 (NaN)	-20.51 (0.44)	4.17 (0.14)
$-1.5 \times 10^{-5} < \delta_q \leq -5.0 \times 10^{-6}$	0 (NaN)	-8.29 (0.31)	2.63 (0.19)
$\delta_q > -5.0 \times 10^{-6}$	0 (NaN)	11.12 (0.54)	0.78 (0.35)

population modelling. Joinpoint regression is known to be an effective tool for analyzing changes in trends in epidemiological and cancer-related scenarios; however, little has been done on applying joinpoint regression to ecological risk assessment. To that end, we have proposed that joinpoint regression be combined with surplus production models to allow for the estimation of population parameters that might undergo a sudden change given anthropogenic factors. In the following subsections, we discuss the ability of the joinpoint regression to i) estimate the true joinpoint time t^* , ii) estimate the true joinpoint versus the change in growth rate between periods 1 and 2 (i.e. $\delta_r = |r_1 - r_2|$), iii) estimate the true joinpoint versus the change in catchability coefficients between periods 1 and 2 (i.e. $\delta_q = |q_1 - q_2|$), iv) identify the length of the transition period during which a stable population appeared following the joinpoint (i.e. $\text{abs}(t_1^* - t_2^*)$) and, v) improve the estimates of growth rate and catchability compared to standard methods (i.e. when joinpoints are ignored), or when the joinpoint is known *a priori*.

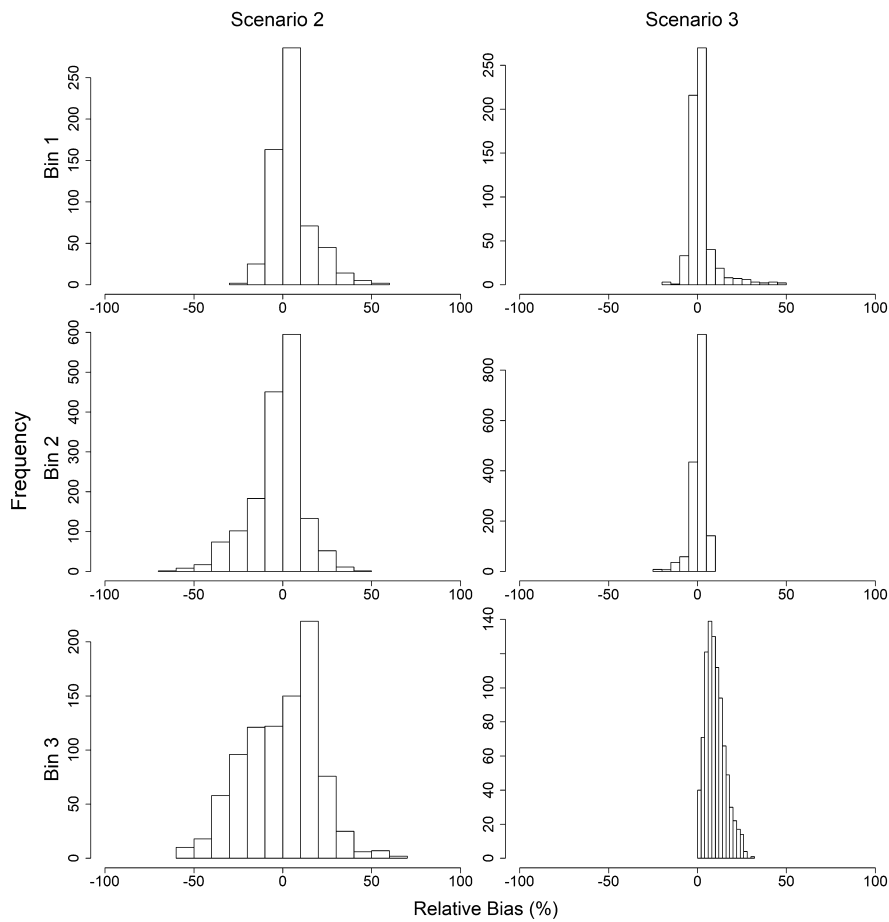


Fig. 5. Relative bias (%) of growth rate r_2 given $\delta_r = r_1 - r_2$, where r_1 is the growth rate prior to the jointpoint, and r_2 is the growth rate following the jointpoint, by scenario. Delta growth bins 1–3 (rows) include experiments where $\delta_r \leq 0.20$, $0.20 < \delta_r \leq 0.45$, and $\delta_r > 0.45$, respectively. Scenarios 2–3 (columns) indicate analysis assuming using the estimated jointpoint, or using the true jointpoint, respectively.

4.1. Estimation of true jointpoint time

The jointpoint regression model was able to effectively estimate the true jointpoint time t_1^* . That is, given a simulated time series that included a point in time where the population dynamics changed, the model was able to provide a reasonable estimate of when this change occurred. Although interval estimation was beyond the scope of the work for this study, Muggeo (2017) provides a smoothed score-based approach for interval estimation for jointpoint regression. This interval estimation method, now included in newer versions of the *segmented* packaged in R, should be considered for future uses of this model when providing estimates of true jointpoint time (Muggeo, 2017).

It is important to note, however, that jointpoint regression models tended to perform better (i.e. estimate population parameters with low absolute relative bias) when the magnitude of change in the growth rate was large. This is evident based on the variances observed for each level of δ_r in the simulations. The variances observed were approximately 5 times higher when $\delta_r < 0.10$ compared to when $\delta_r \geq 0.10$. This can be viewed as a double-edged sword. On one hand, the jointpoint regression model may be able to prove itself effective to be able to detect changes in population trends that are not obvious by inspection alone, allowing managers to potentially take action sooner if there is a negative change in population dynamics. On the other hand, jointpoint regression could be viewed as too sensitive of a model and estimate a change in population dynamics when there is no change. Further studies should investigate the effectiveness of jointpoint regression modelling in populations with little to no change in population dynamics.

4.2. Transition period length

Transition period length was a metric used to estimate how long it took for a population to re-stabilize after a change in population dynamics. This was accomplished by allowing the jointpoint regression model to estimate two jointpoints: t_1^* —when the population dynamics changed, and t_2^* —the point in time where the population was re-stabilized following the change in population dynamics. The transition period was calculated as the average of the difference in these two estimated jointpoints.

On average, the transition period length was approximately 7 years. However, this varied heavily depending on the magnitude of change in growth rate and catchability. For instance, in cases where the magnitude of change in population dynamics was small, the transition length tended to be longer. Two possible reasons exist to explain this. One explanation could be that when there was a small change in population dynamics, the overall population may have only experienced a gentle increase or decrease in total population over a long period of time before re-stabilizing (that is, neither increasing or decreasing in population on average), thus drawing out the transition period time. Another explanation could be that when there was a small change in population dynamics, the jointpoint regression model wasn't sensitive enough to pick up a distinct time when the population re-stabilized, which could also draw out the transition period. Future studies should investigate the effectiveness of jointpoint regression to provide an accurate transition period length in populations where the dynamics only change slightly.

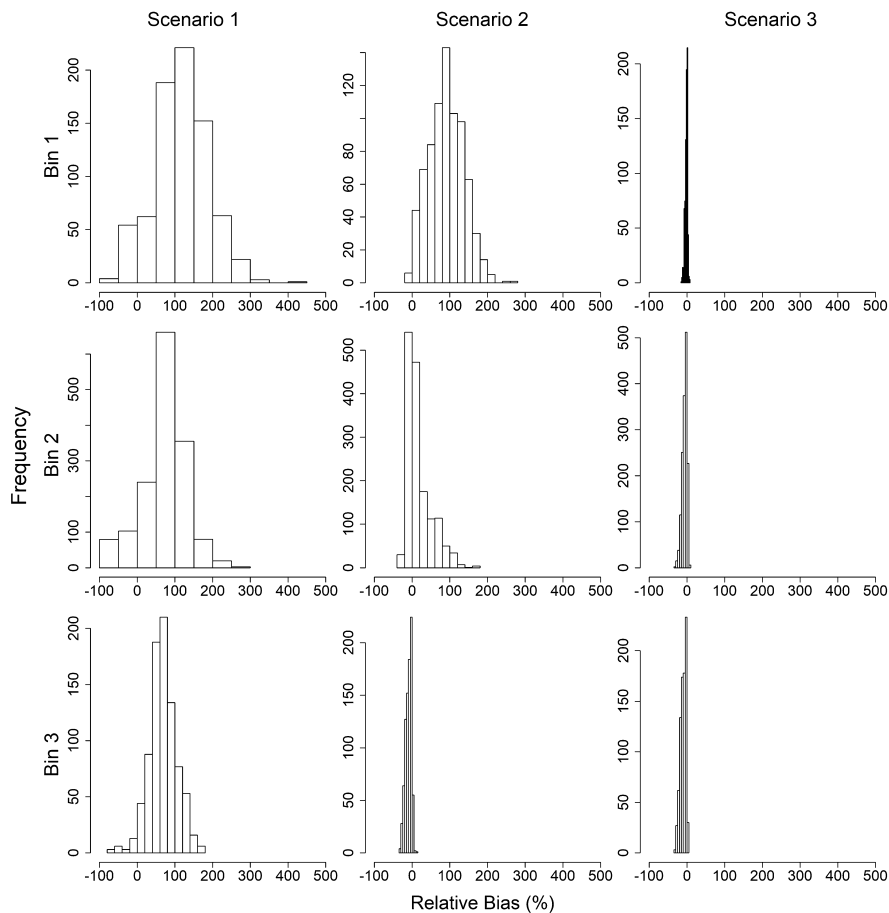


Fig. 6. Relative bias (%) of growth rate q_1 given $\delta_q = q_1 - q_2$, where q_1 is the catchability prior to the joinpoint, and q_2 is the catchability following the joinpoint, by scenario. Delta catchability bins 1–3 (rows) include experiments where $\delta_q \leq -1.5 \times 10^{-5}$, $-1.5 \times 10^{-5} < \delta_q \leq -5.0 \times 10^{-6}$, and $\delta_q > -5.0 \times 10^{-6}$, respectively. Scenario 1–3 (columns) indicate analysis assuming no joinpoint, using the estimated joinpoint, or using the true joinpoint, respectively.

4.3. Estimates of population dynamics

Simulated time series data were analyzed to estimate the growth rate and catchability coefficient for each of the three scenarios. As mentioned, since scenario 1 did not assume any change in population dynamics, only one growth rate and catchability coefficient were calculated for the entire time series. This contrasts with scenario 2 and scenario 3 which had a growth rate and catchability coefficient estimated for the period before the joinpoint and the period after the joinpoint.

For each scenario, mean relative bias was used as an indicator of how close the estimates were to the true growth rate or catchability coefficient. Compared to simulations assuming no change in population dynamics, the use of either an estimated joinpoint or the true joinpoint appeared to significantly decrease the mean relative bias of population parameter estimates. That is, when population parameters suddenly change, population dynamics could be more accurately estimated when using joinpoint regression. In comparing mean relative bias between estimates obtained with an estimated joinpoint versus the true joinpoint, while there are some minor differences, they were still significantly less biased than the scenario assuming no joinpoint. This would imply that even if a joinpoint is not known *a priori*, the use of an estimated joinpoint is still sufficient for more accurate estimates of population parameters.

4.4. Limitations and future work

In this study, we only investigated the case of a single joinpoint in time. Further studies could explore the effectiveness of joinpoint

regression parameter estimates with models containing two or more joinpoints in time. With these multiple joinpoints, edge properties can be explored by having a joinpoint close to the beginning of a simulation, close to the end of a simulation, or both.

All of the scenarios we investigated used a constant carrying capacity K throughout the simulation. This constant carrying capacity added an overall stability to the population once it stabilized after the preliminary 32 year period. Future studies should investigate joinpoint regression's efficiency in a simulation that may have either a change in K at a certain point in time or a varying K over a long period of time.

This study only investigated the case of a varying growth rate or catchability coefficient, where the population parameters before and after the joinpoint were sampled from finite and discrete sets. Further studies could allow r or q to be sampled from a distribution, rather than randomly sampled from a finite set.

It's worth noting that, as mentioned before, growth rate r is typically a stable population parameter (Hilborn and Walters, 2001), however for the purposes of this study, we chose to have a change in growth rate at time t to investigate whether this change could even be picked up by the joinpoint model. Additionally, in a typical fishery environment, the growth rate r , if it does change, generally increases with increased exploitation. In our study, however, we chose to simply investigate a change in growth rate *per se*, and not necessarily related to increased exploitation. Future studies could seek to investigate a change in growth rate as it pertains to a change in exploitation.

All of the scenarios we investigated assumed nothing about the gear used for harvesting, except that it is constant through time. Future studies could look at whether a joinpoint regression can pick up changes in

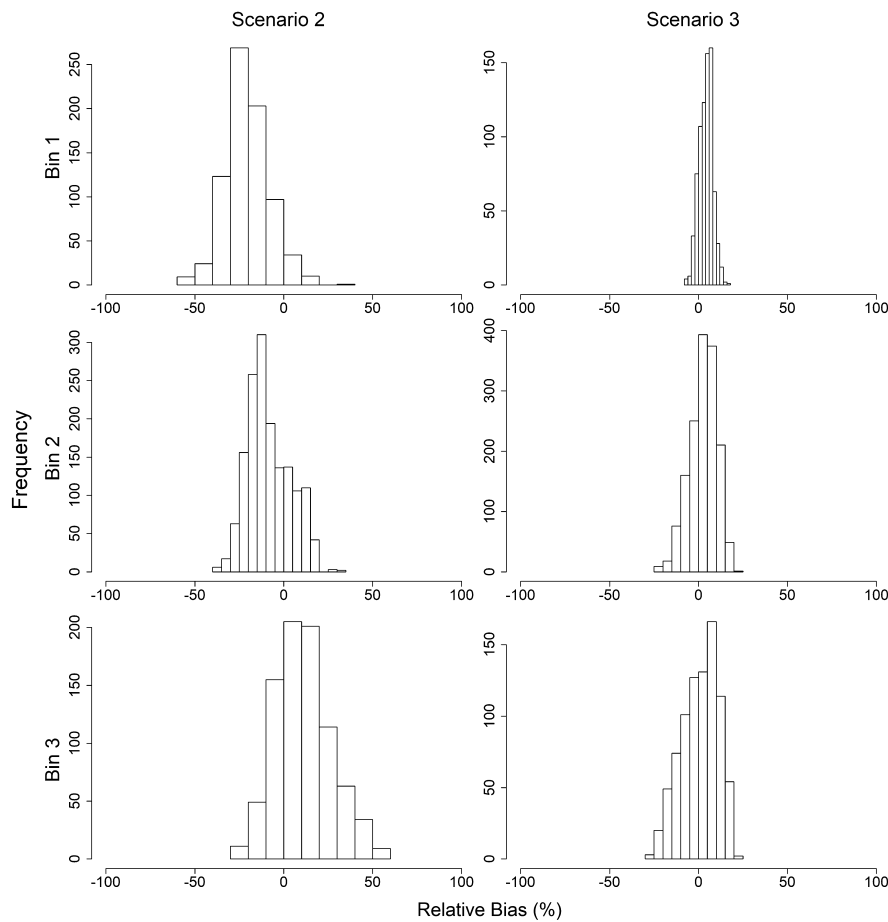


Fig. 7. Relative bias (%) of growth rate q_2 given $\delta_q = q_1 - q_2$, where q_1 is the catchability prior to the joinpoint, and q_2 is the catchability following the joinpoint, by scenario. Delta catchability bins 1–3 (rows) include experiments where $\delta_q \leq -1.5 \times 10^{-5}$, $-1.5 \times 10^{-5} < \delta_q \leq -5.0 \times 10^{-6}$, and $\delta_q > -5.0 \times 10^{-6}$, respectively. Scenario 2–3 (columns) indicate analysis using the estimated joinpoint, or using the true joinpoint, respectively.

gear used for harvesting, regardless if there was an actual change in population parameters.

5. Conclusions

The results shown here are preliminary results for determining the effectiveness of joinpoint regression to improve population parameter estimates from standard surplus production models. In this paper, we aimed to 1) determine if joinpoint regression can be used to identify if and when population structure changes occur based on time series of abundance, and 2) compare and contrast population parameter estimates derived through joinpoint and surplus production methods to those derived from standard surplus production methods alone.

The joinpoint regression was consistently able to estimate the true joinpoint t^* , although these estimates tended to be more accurate as the magnitude of change in population parameters increased. This was obvious in observing the population parameters estimates of both growth rate and catchability coefficient before and after the joinpoint in that the variance of estimates tended to decrease as the magnitude of change in either of the parameters increased. The change of magnitude in these population parameters also played a factor in calculating transition period length in that a smaller change of magnitude tended to correspond with a longer transition period. Finally, relative bias of population parameter estimates tended to decrease when using either an estimated joinpoint time or true joinpoint time compared to estimates where no joinpoint time was assumed; that is, when using the joinpoint, whether it was the estimated or the true joinpoint, the estimates in population parameters were more accurate to the true value of the population parameter compared to the estimates that assume no joinpoint.

We have shown here how joinpoint regression can be used to improve population parameter estimation in surplus production models. However, the use of joinpoint regression should be considered for other types of risk assessment modelling, such as age- or stage-structured population modelling, to gain a more accurate and complete understanding of population dynamics and changes that may occur through time.

Declarations

Author contribution statement

Daniel Gillis: Conceived and designed the experiments; Performed the experiments; Analyzed and interpreted the data; Contributed reagents, materials, analysis tools or data; Wrote the paper.

Brandon P.M. Edwards: Performed the experiments; Analyzed and interpreted the data; Contributed reagents, materials, analysis tools or data; Wrote the paper.

Funding statement

This research did not receive any specific grant from funding agencies in the public, commercial, or not-for-profit sectors.

Competing interest statement

The authors declare no conflict of interest.

Additional information

Supplementary content related to this article has been published online at [10.1016/j.heliyon.2019.e02515](https://doi.org/10.1016/j.heliyon.2019.e02515).

Acknowledgements

The authors would like to thank our research assistant, Malka Saba for her contributions supporting the work presented in this paper. The authors would like to thank the reviewers for their valuable and helpful comments and suggestions to improve the paper. This project was supported in part by the University of Guelph and Saugeen Ojibway First Nations Faculty Partnership Program. We acknowledge that the University of Guelph resides on the ancestral lands of the Attawandaron people and the treaty lands and territory of the Mississaugas of the Credit. We recognize the significance of the Dish with One Spoon Covenant to this land and offer our respect to our Anishinaabe, Haudenosaunee and Métis neighbours as we strive to strengthen our relationships with them.

Appendix A. Supplementary material

Supplementary material related to this article can be found online at <https://doi.org/10.1016/j.heliyon.2019.e02515>.

References

- Barrio, G., Pulido, J., Bravo, M.J., Lardelli-Claret, P., Jimenez-Mejias, E., de la Fuente, L., 2015. An example of the usefulness of joinpoint trend analysis for assessing changes in traffic safety policies. *Accid. Anal. Prev.* 75 (6), 292–297.
- Bosetti, C., Bertuccio, P., Chatenoud, L., Negri, E., La Vecchia, C., Levi, F., 2011. Trends in mortality from urologic cancers in Europe, 1970–2008. *Eur. Urol.* 60 (1), 1–15.
- Crispo, A., Barba, M., Malvezzi, M., Arpino, G., Grimaldi, M., Rosso, T., Esposito, E., Sergi, D., Ciliberto, G., Giordano, A., et al., 2013. Cancer mortality trends between 1988 and 2009 in the metropolitan area of naples and caserta, southern Italy: results from a joinpoint regression analysis. *Cancer Biol. Ther.* 14 (12), 1113–1122.
- Department of Economic & Social Affairs: Population Division, U.N., 2017. World population prospects: the 2017 revision, key findings and advance tables. Working Paper No. ESA/P/WP/248, 1.
- Dyvesether, S., Nordentoft, M., Forman, J., Erlangsen, A., 2018. Joinpoint regression analysis of suicides in Denmark during 1980–2015. *Danish Med. J.* 65 (4).
- Flockhart, D.T., Pichancourt, J.-B., Norris, D.R., Martin, T.G., 2014. Unravelling the annual cycle in a migratory animal: breeding-season habitat loss drives population declines of monarch butterflies. *J. Anim. Ecol.* 84 (1).
- Gien, L.T., 2000. Land and sea connection: the East coast fishery closure, unemployment and health. *Can. J. Public Health* 91 (2), 121–124.
- Hilborn, R., Walters, C.J., 2001. *Quantitative Fisheries Stock Assessment: Choice, Dynamics, and Uncertainty*. Kluwer Academic Publishers Group.
- Hinkley, D.V., 1971. Inferences in two-phase regression. *J. Am. Stat. Assoc.* 66 (336), 736–743.
- Hutchings, J.A., Myers, R.A., 1994. What can be learned from the collapse of a renewable resource? Atlantic cod, *gadus morhua*, of newfoundland and labrador. *Can. J. Fish. Aquat. Sci.* 51 (9), 2126–2146.
- Jiang, Z., Qiu, Z., Hatcher, J., 2010. Joinpoint trend analysis of cancer incidence and mortality using Alberta data. *Cancer surveillance, surveillance and health status assessment*. Alberta Health Serv., 1–45.
- Long, N.P., Huy, N.T., Trang, N.T.H., Luan, N.T., Anh, N.H., Nghi, T.D., Van Hieu, M., Hirayama, K., Karbwang, J., 2014. Scientific productivity on research in ethical issues over the past half century: a joinpoint regression analysis. *Trop. Med. Int. Health* 42 (3), 121.
- Lopez-Campos, J.L., Ruiz-Ramos, M., Soriano, J.B., 2014. Mortality trends in chronic obstructive pulmonary disease in Europe, 1994–2010: a joinpoint regression analysis. *Lancet Respir. Med.* 2 (1), 54–62.
- Muggeo, V.M., 2017. Interval estimation for the breakpoint in segmented regression: a smoothed score-based approach. *Aust. N. Z. J. Stat.* 59 (3), 311–322.
- Muggeo, V.M.R., 2003. Estimating regression models with unknown break-points. *Stat. Med.* 22, 3055–3071.
- Muggeo, V.M.R., 2008. Segmented: an R package to fit regression models with broken-line relationships. *R News* 8 (1), 20–25.
- Myers, R.A., Hutchings, J.A., Barrowman, N., 1996. Hypotheses for the decline of cod in the North Atlantic. *Mar. Ecol. Prog. Ser.* 138, 293–308.
- Parlee, B.L., Sandlos, J., Natcher, D.C., 2018. Undermining subsistence: Barren-ground caribou in a “tragedy of open access”. *Sci. Adv.* 4 (2).
- Pederson, E.J., Thompson, P.L., Ball, R.A., Fortin, M.-J., Gouhier, T.C., Link, H., Moritz, C., Nenzen, H., Stanley, R.R., Taranu, Z.E., Gonzalez, A., Guichard, F., Pepin, P., 2017. Signatures of the collapse and incipient recovery of an overexploited marine ecosystem. *R. Soc. 4*.
- Plummer, M., 2015. rjags: Bayesian graphical models using MCMC. <http://CRAN.R-project.org/package=rjags>.
- Plummer, M., Best, N., Cowles, K., Vines, K., 2006. Coda: convergence diagnosis and output analysis for MCMC. *R News* 6 (1), 7–11. <http://CRAN.R-project.org/doc/Rnews/>.
- Polacheck, T., Hilborn, R., Punt, A.E., 1993. Fitting surplus production models: comparing methods and measuring uncertainty. *Can. J. Fish. Aquat. Sci.* 50 (12), 2597–2607.
- Poudyal, M., Rothley, K., Knowler, D., 2009. Ecological and economic analysis of poaching of the greater one-horned rhinoceros (*rhinoceros unicornis*) in Nepal. *Ecol. Appl.* 19 (7), 1693–1707.
- Prowse, T.D., Furgal, C., Wrona, F.J., Reist, J.D., 2009. Implications of climate change for northern Canada: freshwater, marine, and terrestrial ecosystems. *AMBIO: J. Hum. Environ.* 38 (5), 282–289.
- Qiu, D., Katanoda, K., Marugame, T., Sobue, T., 2009. A joinpoint regression analysis of long-term trends in cancer mortality in Japan (1958–2004). *Int. J. Cancer* 124 (2), 443–448.
- R Core Team, 2014. *R: A Language and Environment for Statistical Computing*. R Foundation for Statistical Computing, Vienna, Austria. <http://www.R-project.org/>.
- Rose, D., Edwards, B.P.M., Kett, R., Yodzis, M., Angevaere, J., Gillis, D., 2017. Exploring anthropogenic activities and management decisions using a novel environmental agent based model. In: 2017 IEEE Canada International Humanitarian Technology Conference (IHTC), pp. 85–89.
- Rushing, C.S., Ryder, T.B., Marra, P.P., 2016. Quantifying drivers of population dynamics for a migratory bird throughout the annual cycle. *Proc. R. Soc. Lond. B, Biol. Sci.* 283 (1823), 20152846.
- Sprent, P., 1961. Some hypotheses concerning two phase regression lines. *Biometrics* 17 (4), 634–645.
- Wilson, L., Bhatnagar, P., Townsend, N., 2017. Comparing trends in mortality from cardiovascular disease and cancer in the United Kingdom, 1983–2013: joinpoint regression analysis. *Popul. Health Met.* 15 (1), 23.
- Yu, B., Huang, L., Tiwari, R.C., Feuer, E.J., Johnson, K.A., 2009. Modelling population-based cancer survival trends by using join point models for grouped survival data. *J. R. Stat. Soc., Ser. A, Stat. Soc.* 172 (2), 405–425.