



# Patterns of tined lead migration in sacral nerve modulation

Emmanuel Ezra<sup>1</sup> · A. M. Helene Siilin<sup>1</sup> · Milan Gulobovic<sup>2</sup> · J. Wilhelm R. Graf<sup>1</sup>

Accepted: 5 February 2020 / Published online: 6 March 2020  
© The Author(s) 2020

## Abstract

**Aim** Lead migration is a common cause of loss of efficacy in sacral nerve modulation. Our aim was to systematically study the migration pattern of tined leads in sacral nerve modulation. Our hypothesis was that tined leads may promote forward migration because of their configuration.

**Method** Consecutive patients treated with sacral nerve modulation with a tined lead electrode, who had experienced loss of efficacy and had radiographs both at baseline and after loss of efficacy between 2005 and 2016 were eligible for inclusion.

**Results** Twenty-five patients out of 70 with loss of efficacy were studied. Lead migration was measured as percent electrode movement in relation to sacral cortex at lateral projection. All had some degree of lead migration, ranging from 35% backward to 74% forward migration. Sixteen (64%) had forward migration while nine (36%) had backward migration. In seven patients (28%), loss of efficacy was associated with an episode of perceived mechanical strain on the electrode. Fifty percent (4/8) who associated their loss of efficacy with an adverse event had forward migration of the electrode.

**Conclusions** Forward lead migration with concomitant loss of efficacy seems to be a common event in patients with tined leads, hence supporting our hypothesis. The retrospective design and that some of the patients with loss of efficacy could not be included because of incomplete data, which is a limitation to the study. Further studies are needed to confirm to what extent the direction and magnitude of the migration relate to loss of efficacy.

## Trial registration

**Keywords** Tined lead · Migration · Sacral nerve modulation · Fecal incontinence

## Introduction

Sacral nerve modulation (SNM) is an established treatment for fecal incontinence (FI).

Loss of efficacy, defined as “reduced or ceased therapeutic benefit after a period of satisfactory results,” has been reported in up to 45% of cases, making it a major challenge in SNM [1].

Tined leads are constructed to prevent outward migration [2].

The association between lead migration and loss of efficacy has been addressed by several authors [3–7], but systematic studies of migration patterns are lacking.

The hypothesis of this study is that tined leads allow and may even promote inward migration, and the aim was to study lead movement in patients with loss of efficacy.

## Methods

### Materials

After institutional review board approval, all patients who had undergone a successful percutaneous nerve evaluation test (PNE test) for any reason (FI, constipation, and other indications) at the Department of Surgery, Uppsala University Hospital, between 2005 and 2016 were evaluated for inclusion through a review of relevant medical records. The inclusion criteria were:

1. Successful PNE test [8], i.e., a 50% reduction of incontinence episodes, alternatively, a 50% increase in number of bowel movements in patients with constipation.
2. SNM with a tined lead electrode.

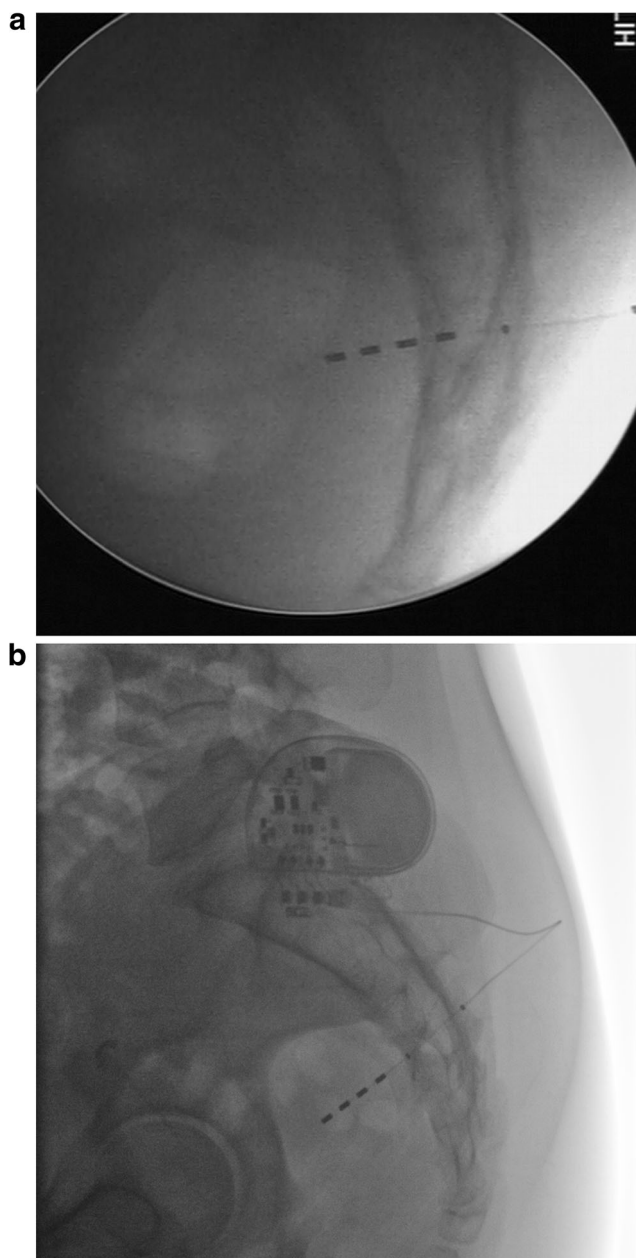
✉ Emmanuel Ezra  
Emmanuel.Ezra@surgsci.uu.se

<sup>1</sup> Department of Surgical Sciences, Uppsala University, Akademiska Sjukhuset, 75 185 Uppsala, Sweden

<sup>2</sup> Department Section of Radiology, Uppsala University, Akademiska Sjukhuset, 75 185 Uppsala, Sweden

3. Loss of efficacy with no improvement after changing the programming parameters.
4. Posteroanterior and lateral radiographs at baseline and after loss of efficacy.

The radiographs were assessed by a senior radiologist for lead disruption or migration. The distance between the lead tip and the ventral surface of the ventral sacral cortex where the lead exited the sacral foramina was assessed to determine whether migration had occurred and the direction of the migration (Fig. 1 a and b).



**Fig. 1** **a** Lateral pelvic radiography showing electrode position at implantation and **b** after loss of efficacy

To avoid measurement errors because of variations in magnification, relative values of lead displacement were used in the calculations.

### Surgical technique and follow-up

During the first part of the study period, 2005 to 2011, the PNE test was performed using a thin, temporary electrode under general anesthesia without muscle relaxants with the patient in a jackknife position. After marking of bony landmarks verified with radiography, the third or fourth sacral foramina was punctured with a hollow needle and a temporary electrode inserted (Model 3057; Medtronic InterStim, Minneapolis, MN, USA). The S3 nerve root was the preferred site of stimulation. The threshold of a perineal motor response was registered, and at least two temporary electrodes were implanted and fixed with an adhesive dressing. Postoperatively, the electrode with the lowest threshold causing a sensory response without discomfort was selected for initial stimulation and connected to an external stimulator (Interstim Model 3625; Medtronic, pulse amplitude 0.1–10 V; frequency 14 Hz; pulse with 210 ms) kept in the patient's belt or pocket. From 2012 to 2016, the PNE test was performed with the tined lead electrode (InterStim model 3889). The procedure was done with local anesthesia and sedation, with the patient in a jackknife position, allowing location of the target sensory area, which is not possible during general anesthesia.

In cases of suboptimal treatment effect, the alternative test lead was used or the program parameters were changed. At the first follow-up visit, all temporary electrodes and tined lead electrodes with negative tests were extracted. Based on the diary registrations and patients' interviews, a decision was made concerning a permanent implant, provided that a 50% symptom reduction had been achieved. In patients with the temporary electrodes with positive tests, the permanent implant was performed in a similar manner except that a permanent tined lead electrode (InterStim model 3093/3889) was used which was connected to the stimulator (InterStim model 3023) placed in the deep subcutaneous gluteal pocket through a connecting cable (InterStim model 3095). In patients with tined lead electrodes and positive tests, the implanted electrode was connected to the stimulator in the same manner. The stimulator was activated the day after the surgery. The patients also received a remote control and were instructed about the system and how to vary the amplitude and stimulation sites. Patients were instructed to avoid physical exercise, especially lumbar flexion or other excessive ranges of motion affecting the electrode, for at least 3 months post-implant, and a 4–6-week sick leave was recommended.

## Statistical method

Data are presented as means  $\pm$  SD or medians and range. Lead migration was assessed by comparing lateral pelvic radiographs after loss of efficacy with baseline radiographs, using the Wilcoxon matched pairs test.  $P < 0.05$  was considered statistically significant.

## Results

### Clinical course

In total, 136 patients had successful SNM and a permanent implant. Of these, 70 patients (52%) experienced loss of efficacy. Twenty-five out of 70 (36%) had complete radiographs before and after loss of efficacy and could be included for evaluation. Seventeen patients (68%) suffered from FI and eight (32%) from constipation. Ten patients (40%) were implanted in S3 dx, eleven (44%) in S3 sin, and four (16%) in S4 sin.

### Electrode migration

Lead migration frequency in this population was 100%. The lead migration ranged from 35% backward to 74% forward, and the median migration was 12% (mean 8%) forward (Fig. 2). The median percentage of lead extending beyond cortex was 62% at baseline and 71% after loss of efficacy ( $P = 0.14$ ). Sixteen patients in the study population (64%) had forward migration, while nine (36%) had backward migration. Loss of efficacy was associated with an adverse event,

i.e., mechanical strain, in seven patients (28%) and one patient (4%) experienced loss of efficacy in connection with a botulinum toxin injection for an anal fissure. In 50% ( $n = 4$ ) of the patients who associated their loss of efficacy with an adverse event, a forward dislocation of the electrode was observed.

## Discussion and conclusion

Although SNM is used successfully for fecal incontinence, continuous improvements of implants, operative techniques, and minimization of side effects are all still needed. All these aspects were addressed in this study [9].

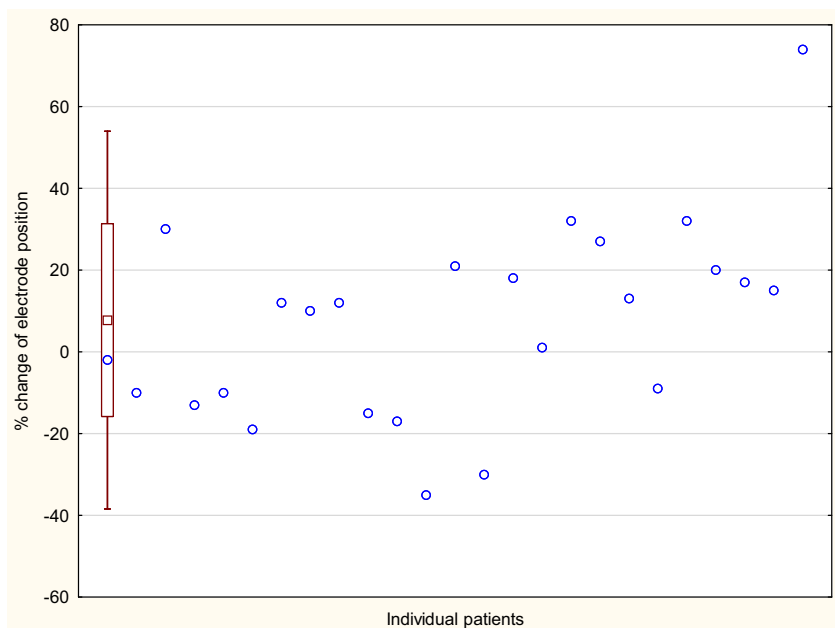
Of those who received SNM with tined leads, 92% had a positive result, in line with previously reported positive predictive values of a positive PNE test [10]. However, in our material (70 patients), 52% experienced loss of efficacy, which is slightly higher than the frequencies up to 45% reported by Maeda et al. [1].

Theoretically, differences in patient selection, surgical technique, and the size of this material may explain variations in the proportion of loss of efficacy.

All with repeated pelvic radiographs exhibited some degree of lead migration, and this is a significantly higher percentage than reported by others, e.g., Jarret et al. and Spinelli et al. [4, 5]. However, these authors also refer to small patient populations receiving SNM with tined leads and measurements of lead migration at 6 weeks and 6 months post-implantation respectively.

In clinical practice, it is believed that post-implantation electrode dislocation occurs early due to lack of scar fixation. Most centers give their patients physical instructions to avoid

**Fig. 2** Individual and overall relative change of electrode position. Each circle represents the change of electrode position at follow-up—relative baseline. The box plot shows the mean change  $\pm$  SD and the bars  $\pm 1.96 \times$  SD



early dislocations. However, in our material, the mean duration from implantation to the radiograph indicated by loss of efficacy was 22 months. Although the dislocation might have started earlier, the symptom change occurred within a limited time frame before imaging. It is possible that dislocation is gradual and that loss of efficacy occurs at a specific point during this continued dislocation. Our findings indicate that early dislocation is probably not the major reason for loss of efficacy in this material. Nevertheless, since we do not have repeated radiographs before loss of efficacy has occurred, we cannot say anything about the dynamics of the dislocation.

In 50% ( $n = 4$ ) of the patients who associated their loss of efficacy with an adverse event, a forward dislocation of the electrode was observed contrary to what could have been expected.

We used a standardized patient and c-arm setups in order to minimize variations in angulation and intra- and inter-patient variations in measurements. Still, despite our standardized setup and the use of relative values, possible measurement errors need to be considered in the overall interpretation. However, we believe that our methods are reasonably accurate in detecting the gross direction of movement in the electrode. The retrospective design and the patients lost to follow-up because of incomplete data are further limitations to this study.

Small movements of an implanted electrode are probably inevitable. The trend towards a predominately inward dislocation might suggest that tines facilitate inward micro movements making these electrodes more susceptible to inward dislocation. Deng et al. found a similar trend in 2006 [11]. A possible solution to this problem is the construction of leads with tines that prevent bi-directional migration.

Although considered cost-effective, SNM is a relatively costly treatment. Lead-related problems account for almost two-thirds (58.8%) of unplanned surgical procedures after implantation [12]. Therefore, minimizing loss of efficacy due to technical failure, for example lead migration, is important.

In this material, forward lead migration with concomitant loss of efficacy seems to be a frequent event in patients with tined leads, hence supporting our hypothesis. To confirm if and to what extent the direction and magnitude of the migration relate to loss of efficacy needs further studies.

**Funding Information** Open access funding provided by Uppsala University.

**Open Access** This article is licensed under a Creative Commons Attribution 4.0 International License, which permits use, sharing, adaptation, distribution and reproduction in any medium or format, as long as you give appropriate credit to the original author(s) and the source,

provide a link to the Creative Commons licence, and indicate if changes were made. The images or other third party material in this article are included in the article's Creative Commons licence, unless indicated otherwise in a credit line to the material. If material is not included in the article's Creative Commons licence and your intended use is not permitted by statutory regulation or exceeds the permitted use, you will need to obtain permission directly from the copyright holder. To view a copy of this licence, visit <http://creativecommons.org/licenses/by/4.0/>.

## References

1. Maeda Y, Matzel K, Lundby L et al (2011) Postoperative issues of sacral nerve S13 systematic review of the clinical effectiveness of neuromodulation in the treatment of faecal incontinence. *Br J Surg* 100:1430–1447
2. Jarrett ME, Mowatt G, Glazener CM, Fraser C, Nicholls RJ, Grant AM, Kamm MA (2004) Systematic review of sacral nerve stimulation for fecal incontinence and constipation. *Br J Surg* 91:1559–1569
3. Maeda Y, Lundby L, Buntzen S, Laurberg S (2010) Sacral nerve stimulation for constipation: suboptimal outcome and adverse events. *Dis Colon Rectum* 53:995–999
4. Spinelli M, Weil E, Ostardo E, del Popolo G, Ruiz-Cerdá JL, Kiss G, Heesakkers J (2005) New tined lead electrode in sacral neuromodulation: experience from a multicenter European study. *World J Urol* 23:225–229
5. Gaynor-Krupnick DM, Dwyer NT, Rittenmeyer H, Kreder KJ (2006) Evaluation and management of malfunctioning sacral neuromodulator. *Urology* 67:246–249
6. Carrington EV, Evers J, Grossi U, Dinning PG, Scott SM, O'Connell PR, Jones JF, Knowles CH (2014) A systematic review of sacral nerve stimulation mechanisms in the treatment of fecal incontinence and constipation. *Neurogastroenterol Motil* 26:1222–1237
7. Vaizey C, Kamm M, Turner I, Nicholls RJ, Woloszko J (1999) Effects of short term sacral nerve stimulation on anal and rectal function in patients with anal incontinence. *Gut* 44:407–412
8. Graf W, Sonesson A-C, Lindberg B, Åkerud P, Karlbom U (2015) Results after sacral nerve stimulation for chronic constipation. *Neurogastroenterol Motil* 27:734–739
9. Dudding TC (2011) Future indications for sacral nerve stimulation. *Color Dis* 13:23–28
10. Thin NN, Horrocks EJ, Hotouras A, Palit S, Thaha MA, Chan CL, Matzel KE, Knowles CH (2013) Systematic review of the clinical effectiveness of neuromodulation in the treatment of faecal incontinence. *Br J Surg* 100:1430–1447
11. Deng DY, Gulati M, Rutman M, Raz S, Rodríguez LV (2006) Failure of sacral nerve stimulation due to migration of tined lead. *J Urol* 175:2182–2185
12. Zeiton M, Faily S, Nicholson J, Telford K, Sharma A (2016) Sacral nerve stimulation—hidden costs (uncovered). *Int J Color Dis* 31:1005–1010

**Publisher's note** Springer Nature remains neutral with regard to jurisdictional claims in published maps and institutional affiliations.