

# Geographical range evolution of the genus *Polypedates* (Anura: Rhacophoridae) from the Oligocene to present

## DEAR EDITOR,

Currently, the genus *Polypedates* comprises 26 species distributed in South, Southeast, and East Asia. Because of their relatively low dispersal capability and intolerance to seawater, this genus is ideal for the study of terrestrial range evolution that extends into the island archipelagos of southeastern Asia. In this study, based on data compiled for *Polypedates* from previous studies and partial mitochondrial and nuclear genes collected in this study, we performed systematic biogeographical analysis. We confirmed a Sundaland origin for the extant genus and showed northward dispersal into mainland Southeast Asia and Asia, which coincided with the timing of paleoclimatic change from the Oligocene to Middle Miocene. Climate fluctuations had a profound impact on species diversification within the genus *Polypedates*. Furthermore, the Red River did not mediate species exchange between Southeast Asia and mainland Asia until the end of the Miocene, with the sudden onset of northward dispersal in several clades independently at that time. Alternatively, the lineage of widespread insular *P. leucomystax* strongly supports the hypothesis of terrestrial connection between island archipelagos of Southeast Asia during the Mid-Pleistocene paleoclimate fluctuations. Our biogeographical analysis also supports the recent introduction of *P. leucomystax* to the Philippines and Ryukyus, as previously suggested.

Biogeographical studies aim to understand when and how dispersal events resulted in current patterns of species distribution (Jiang et al., 2019; Klaus et al., 2016). South, Southeast, and East Asia harbor extraordinarily high levels of species diversity and share important zoogeographic fauna in the Oriental Region (Holt et al., 2013). A number of so called "transition zones" between zoogeographic regions have been

described for these areas. For example, the Isthmus of Kra represents a transition zone between mainland Southeast Asia and Sundaic faunal elements in mammals and birds (Hughes et al., 2003; Woodruff & Turner, 2009), and the Ailao Shan-Red River (ASRR) shear zone plays an important role in shaping the present tectonic framework between mainland Southeast Asia and southern China (Anczkiewicz et al., 2007; Searle, 2006). A complex geological and climatic history is behind the high species richness in these regions (Klaus et al., 2016). However, studies with additional groups of animals are required to develop a more comprehensive understanding of these biogeographical processes. Among them, it is of particular importance to unravel the evolutionary processes of geographical range in amphibians.

The genus *Polypedates* (Rhacophoridae) (von Tschudi, 1838), i.e., whipping frogs (Werner, 1996), is widespread, covering India, Southeast Asia, South China, and eastward to the Philippines and Japan (Frost, 2019). Its current distribution includes several biodiversity hotspots, namely, the Himalayas, Hengduan Mountains, Indo-Burma, Sundaland, part of Wallacea, and the Philippines (Myers et al., 2000). The genus *Polypedates* occurs with *Chiromantis* and *Rhacophorus* and can resist desiccation, with females characteristically laying a foamy egg nest on or near water (Kuraishi et al., 2013). This indicates that, albeit dependent on the presence of forest and rainfall, *Polypedates* exhibits good survival skills under unfavorably dry conditions, which has likely facilitated its colonization into various regions. *Polypedates* has diversified since the Oligocene (Li et al., 2013). Therefore, it seems that the dispersal processes of *Polypedates* can be attributed to a

Received: 27 August 2020; Accepted: 02 November 2020; Online: 18 November 2020

Foundation items: This work was supported by the National Natural Science Foundation of China (31722049, 31900322, 31911530101, 32070410); International Partnership Program of the Chinese Academy of Sciences (151751KYSB20190024); Second Tibetan Plateau Scientific Expedition and Research Program (2019QZKK0501); Russian Foundation of Basic Research (RFBR\_GFEN 19-54-53010); and Innovative Research Project for Postgraduates of Southwest Minzu University (CX2019SZ89)  
DOI: 10.24272/j.issn.2095-8137.2020.246

## Open Access

This is an open-access article distributed under the terms of the Creative Commons Attribution Non-Commercial License (<http://creativecommons.org/licenses/by-nc/4.0/>), which permits unrestricted non-commercial use, distribution, and reproduction in any medium, provided the original work is properly cited.

Copyright ©2021 Editorial Office of Zoological Research, Kunming Institute of Zoology, Chinese Academy of Sciences

series of paleotectonic and paleoclimatic events, including the Indian-Eurasian collision, uplift of Himalayas, and Pleistocene climate oscillations with their associated sea-level fluctuations. However, it is still necessary to present convincing evidence to clarify how these geological events have affected the evolution of these frogs.

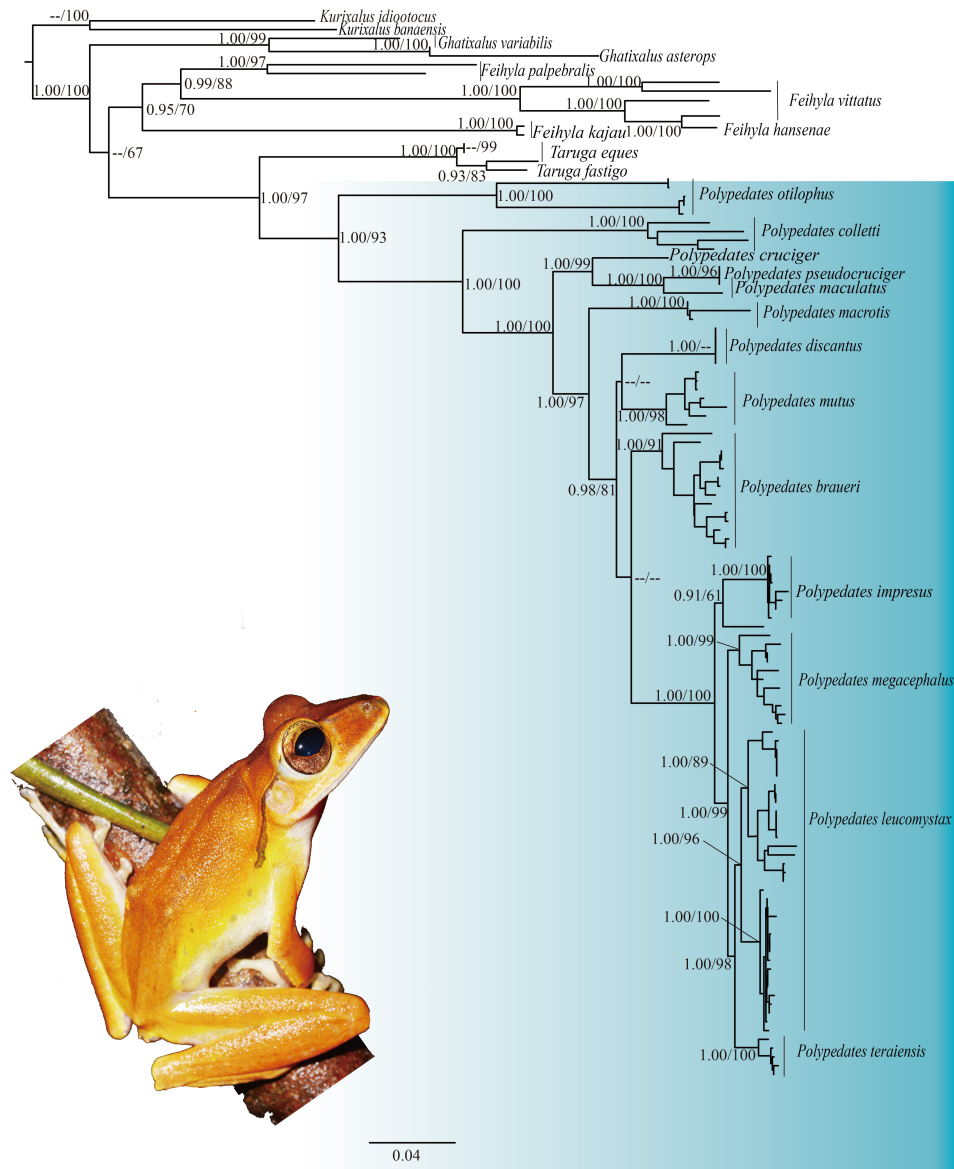
In recent decades, most molecular studies on the genus *Polypedates* have focused on systematic and taxonomic problems and have used a phylogenetic rather than a phylogeographic approach. These studies attempted to understand the molecular phylogenetic relationships among *Polypedates* species and, particularly, the *Polypedates leucomystax* species complex, whose members are difficult to classify (Narins et al., 1998; Pan et al., 2013; Sutthiwisesa et al., 2020; Trépanier et al., 1999; Zhang et al., 2005). The *P. leucomystax* complex was once regarded as a highly dispersed group, distributed from India to eastern Indonesia (Dutta & Manamendra-Arachchi, 1996; Inger, 1999; Taylor, 1962). Nevertheless, after considerable taxonomic confusion, the reclassification of the *P. leucomystax* complex led to the exclusion of *P. mutus*, *P. impresus*, *P. braueri*, and *P. megacephalus* in South China (Pan et al., 2013). Kuraishi et al. (2013) conducted a comprehensive phylogenetic study of the *P. leucomystax* complex based on both mtDNA and nDNA and found *P. macrotis* to be sister to the *P. leucomystax* complex. Although Kuraishi et al. (2013) estimated divergence time within the complex, comprehensive biogeographic pattern analyses were not included.

Several studies have explored the diffusion biogeographical mechanism of the *P. leucomystax* complex in Southeast Asia. For example, Brown et al. (2010) reported on the recent population expansion of the *P. leucomystax* complex in the Philippines and Sulawesi, and suggested human-mediated dispersal between oceanic islands. This is supported by Kuraishi et al. (2009), who indicated that *P. leucomystax* from Ryukyus arrived by accidental human transport from Southeast Asia. Blair et al. (2013) studied the evolutionary history of the *P. leucomystax* complex in South China and the Indochinese Peninsula, which included estimations on divergence times and population genetic analyses, and found a northern origin and southward dispersal. Blair et al. (2013) refuted that the demographic expansion of this species and widespread sympatry of lineages originated from human-mediated dispersal between insular and mainland populations, proposing the Red River as a partial barrier for gene flow. Recently, Buddhachat & Suwannapoom (2018) revealed diversification leading to allopatric and sympatric speciation under climatic pressure in the *P. leucomystax* complex in Southeast Asia. Although some species of *Polypedates*, particularly members of the *P. leucomystax* complex from the Sunda Islands or mainland Southeast Asia, have been included in molecular phylogenetic studies and evolutionary speculation, few attempts have been made to explore the complete biogeographic history among members of *Polypedates*. Hence, the routes and timing of migrations within this genus remain obscure.

In this study, we compiled a large dataset of currently recognized species within the genus *Polypedates*, constructed phylogenetic relationships, and dated divergence events using relaxed molecular clock approaches. We examined the diversification history of *Polypedates* and its relationship with regional paleoclimatology and paleogeography and reconstructed the paleobiogeography of *Polypedates*, including its area of origin and likely causes of subsequent migrations.

Overall, despite some missing data, we generated a well-resolved phylogeny of *Polypedates* and related taxa. Our results support the sister relationship of *Polypedates* and *Taruga* (Figure 1, Supplementary Figure S2), consistent with previous studies inferring the inter-relationships of Rhacophoridae (Li et al., 2013). Thirteen species (*P. otlophus*, *P. colletti*, *P. cruciger*, *P. maculatus*, *P. pseudocruciger*, *P. macrotis*, *P. mutus*, *P. braueri*, *P. impresus*, *P. megacephalus*, *P. teraiensis*, *P. leucomystax*, and *P. discantus*) form a monophyletic group (Figure 1, Supplementary Figure S2). The high support for samples 31–119 suggests that *P. macrotis* is sister to the *P. leucomystax* complex. According to our results and previous studies (Buddhachat & Suwannapoom, 2018; Grosjean et al., 2015; Kuraishi et al., 2013; Rujirawan et al., 2013; Sutthiwisesa et al., 2020), the *P. leucomystax* complex is composed of seven groups: *P. leucomystax*, *P. megacephalus*, *P. mutus*, *P. braueri*, *P. discantus*, *P. impresus*, and *P. teraiensis*. Each highly supported group could be considered a distinct species (Kurniati, 2011; Kuraishi et al., 2013; Matsui et al., 1986). Our results also shed light on the phylogenetic relationships of *P. braueri* and the most recent common ancestor (MRCA) of *P. impresus*, *P. megacephalus*, *P. leucomystax*, and *P. teraiensis*, which have remained unresolved till now.

Amphibians are an excellent model for biogeographic studies on overseas dispersal events (Chen et al., 2018; Gonzalez et al., 2014; Hutter et al., 2018; Lee Grismer et al., 2017; Li et al., 2013; Lv et al., 2018; O'Connell et al., 2018; Pan et al., 2017; Yuan et al., 2019). Several biogeographic studies have suggested that Southeast Asia is a cradle for amphibian speciation (Chen et al., 2018; Lee Grismer et al., 2017; O'Connell et al., 2018; Pan et al., 2017). In the present study, ancestral area reconstruction based on likelihood and Bayesian approaches indicated that *Taruga* occurred in India and the MRCA of *Taruga* and *Polypedates* originated in India. Furthermore, our phylogenetic analyses support the sister relationship of *Taruga* and *Polypedates*. The divergence between *Polypedates* and *Taruga* likely occurred between 28 and 22 million years ago (Ma) (Figure 2A), similar to the estimation provided by Li et al. (2013). Notably, this time estimation coincides with the period in which the Indian subcontinent moved further north after collision with Southeast Asia, and distinctly seasonal climates accelerated phylogenetic diversification (Bouilhol et al., 2013). However, our biogeographical analyses confirmed Sundaland as the origin of the genus *Polypedates*, with subsequent dispersal to



**Figure 1** Phylogenetic tree inferred from mitochondrial and nuclear DNA

Numbers above lines or beside nodes are given as Bayesian posterior probabilities (BPP)/bootstrap support (BSP) for maximum-likelihood analyses; "--" represents BPP and BSP lower than 0.9 and 50, respectively. Photograph of *Polypedates megacephalus* is from Jin-Long Ren.

mainland Southeast Asia (Figure 2A). Although insufficient specimens and sequences from India were included in this study, it can be inferred that dispersal between India and Southeast Asia did not occur only once. *Polypedates cruciger*, *P. maculatus*, and *P. pseudocruciger* first dispersed from Sundaland to India (19–11 Ma), after which *P. teraiensis* dispersed in sympatric regions in mainland Southeast Asia and India (Figure 2A). Thus, if true, two routes may have facilitated the dispersal of *Polypedates* into India, i.e., via a terrestrial bridge or the Himalayan foothills. However, the collision between the Indian subcontinent and Southeast Asian islands occurred around 50 Ma and formed a terrestrial

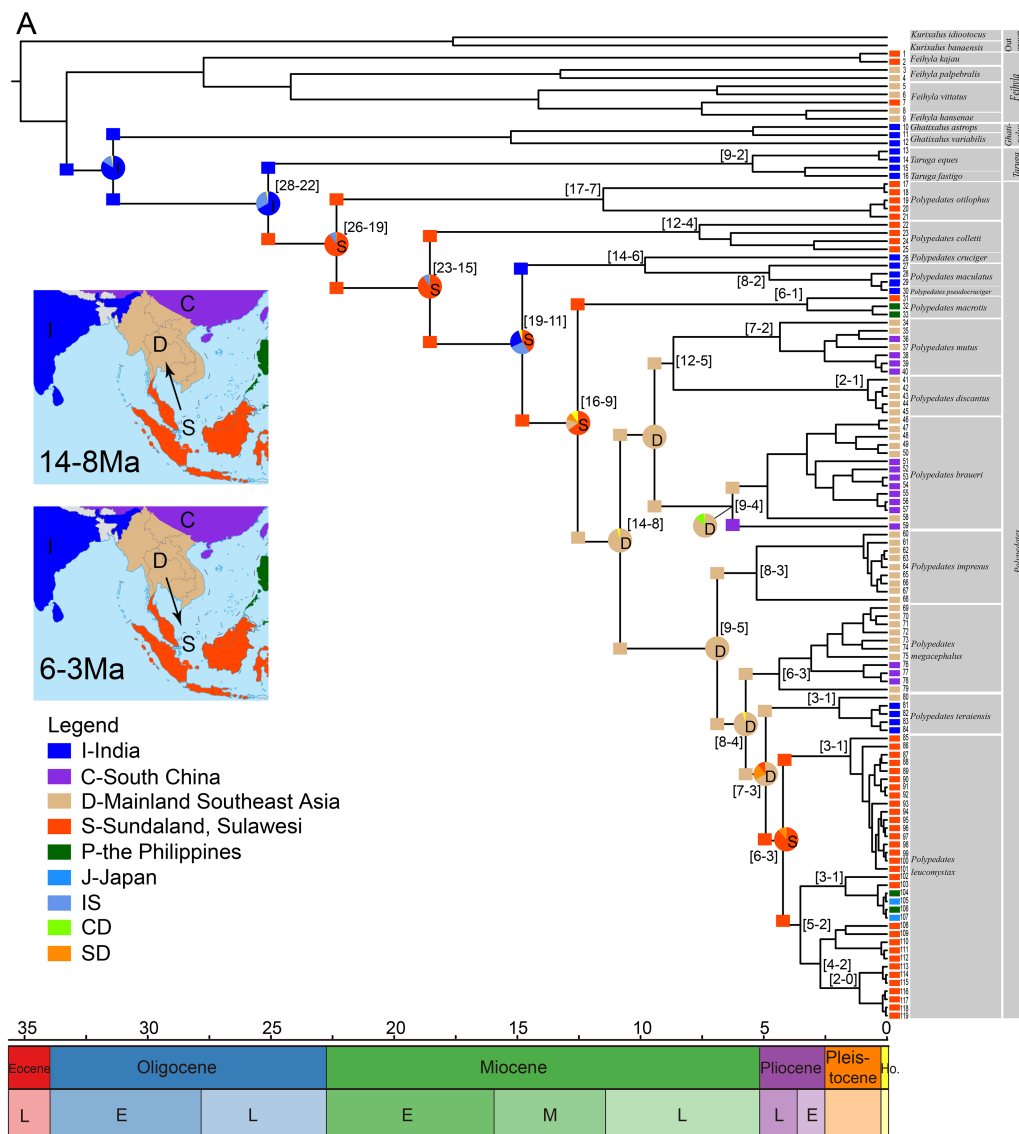
corridor during its northward drift, with final collision between the Indian subcontinent and mainland Eurasia about 34 Ma (Li et al., 2013). Given that the first dispersal event occurred between 19 and 11 Ma, the second route is more likely, and would have consisted of a continuous dispersal corridor formed by widespread evergreen rainforests along the Himalayan foothills during the middle Miocene (Wan et al., 2009; Zachos et al., 2008). Our results are consistent with the increasing dispersal events from mainland East Asia to the Indian subcontinent between 21 and 11 Ma (Figure 2A), coinciding with the global Mid-Miocene Climatic Optimum (17–14 Ma) (Klaus et al., 2016; Li et al., 2013). Cryptic species

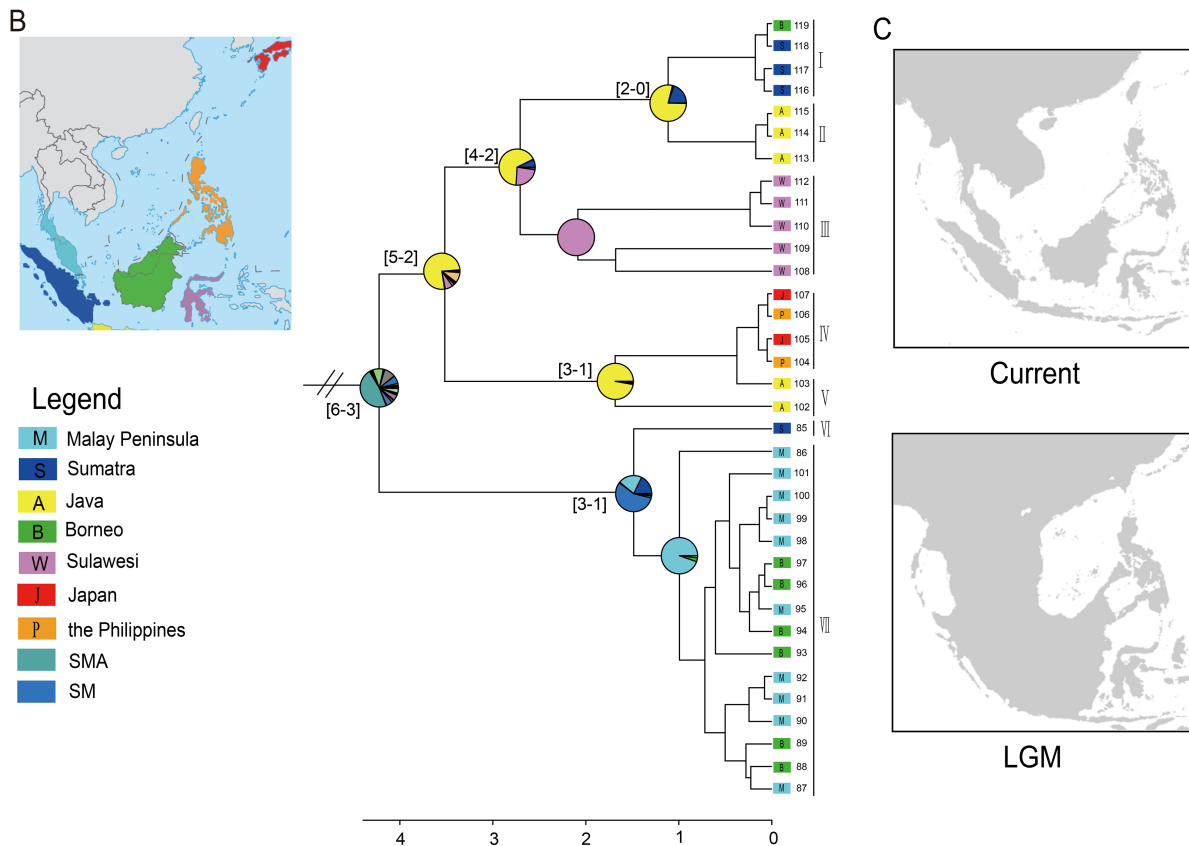
distributed in India may indicate an old dispersal event from India to Southeast Asia, as suggested for other groups (Gower et al., 2002; Klaus et al., 2010; Li et al., 2013; Wilkinson et al., 2002), which could change the original biogeographic history of *Polypedates*. Additional sampling from India is required to test these predictions.

From its Sundaland origin, the genus *Polypedates* colonized mainland Southeast Asia (14–8 Ma) and then dispersed northward to mainland East Asia during the Pliocene and Pleistocene (Figure 2A). During these periods, the genus underwent range expansions at different times, coinciding with the weaker monsoon system and globally warmer climates during the Mid-Miocene (Cliff et al., 2008). Similarly, recent study on *Leptobranchella*, which is also distributed in Southeast Asia, showed range expansions for this genus from Sundaland to mainland Asia from the Mid-Miocene to Pliocene

(Chen et al., 2018). The above evidence supports our belief that *Polypedates* expanded to mainland Southeast Asia and mainland East Asia from Sundaland, leading to species diversification under the influence of geological conditions and climate change.

The Isthmus of Kra was considered a geographic barrier for many years (Wallace, 1876). However, Hughes et al. (2011) stated that the Isthmus of Kra is unlikely to be a significant geographic boundary and suggested the climate zone in mainland Southeast Asia during the Last Glacial Maximum as the explanation for the distinct species distribution. Based on our results suggesting that *Polypedates* colonized mainland Southeast Asia via the Isthmus of Kra in the Mid-Miocene (14–8 Ma) (Figure 2A), this isthmus would have acted as an important dispersal corridor between the Malay Peninsula and mainland Southeast Asia. During the Mid-Miocene, the





**Figure 2 Spatiotemporal reconstruction of *Polypedates***

A: Estimation of ancestral areas for *Polypedates* and three closest related genera based on a Bayesian maximum clade credibility tree. Square labels on tree are range estimates according to DIVALIKE+J model, and pie charts represent posterior probability of ancestral ranges according to Bayesian Binary MCMC. Numbers at phylogenetic tree tip are consistent with numbers of species in Supplementary Table S1. B: Estimation of ancestral areas for *Polypedates leucomystax* based on Bayesian maximum clade credibility tree in Figure 2A. The 95% credibility interval of time estimates are given in square brackets. Square labels on tree are range estimates according to DIVALIKE+J model. Roman numerals are used for group distance estimation. C: Terrestrial areas are represented by coastline from Last Glacial Maximum (LGM) and current period, respectively. Data for each period were compiled from WORLDCLIM database with a resolution of 2.5 arc-minutes (Hijmans et al., 2005).

monsoonal system was probably weaker (Cliff et al., 2008) and the global climate became warmer, which may have facilitated dispersal events into mainland Southeast Asia.

The Red River zone has a complex geological history (Hall, 1998; Replumaz et al., 2001). The formation of the Red River between southern China and northern Vietnam commenced 27 Ma and ended 21–17 Ma (Cheng et al., 1992; Harrison et al., 1992; Tang et al., 2013), and may have acted as a potential geographic barrier for species dispersal. During this period, no divergence was detected between *Polypedates* distributed in mainland Southeast Asia (i.e., southwest of the Red River) and South China (i.e., northeast of the Red River). As many taxa only occur on one side of the Red River (e.g., *Sophora davidii*, Fan et al., 2013), we hypothesize that any change in the runoff regime could have caused a stronger isolation effect by the Red River at that time, with the caveat that denser population genetic sampling of the respective species will be necessary to draw sound conclusions.

Moreover, several transversal movements occurred during the late Miocene in the Red River zone (12–9 Ma, 8–6 Ma) (Zhang et al., 2009), which coincide with divergence across the Red River by *P. mutus*, *P. braueri*, and *P. megacephalus* (Figure 2A). Our assertion that the Red River did not constitute a biogeographic barrier from the late Miocene to early Pliocene for the genus *Polypedates* is consistent with the results of Blair et al. (2013), although they had a larger dataset. Blair et al. (2013) found that the Red River formed a partial barrier for some lineages and could not explain the overall pattern, most likely due to the indistinct taxonomy of *P. leucomystax* and a circumscribed lineage divide. In view of several studies showing genetic diversification between species on both sides of the Red River (Zhang et al., 2010a, 2010b), this zone might function as a diffuse filter barrier for the genus *Polypedates*.

From the early Pliocene till Holocene, *P. leucomystax* dispersed back to Sundaland from mainland Southeast Asia

(6–3 Ma) (Figure 2A) and spread to the Malay Peninsula, Greater Sunda Islands, Philippines, and Japan (Figure 2B). The north-to-south dispersal pattern is also consistent with previous phylogenetic and demographic analysis (Blair et al., 2013). Unsurprisingly, *P. leucomystax* showed considerable genetic differentiation across its vast range, in line with earlier research (Brown et al., 2010). In view of the peculiar paleoclimate and tectonics through the continent of Sundaland and nearby areas during the Pleistocene (Miller et al., 2005), species migration between the Borneo and Malay Peninsula populations would be due to the contiguous terrestrial connection between island archipelagos of Southeast Asia during the Mid-Pleistocene paleoclimate fluctuations (Figure 2C). The Pleistocene colonization of Sulawesi from Java, despite the absence of a continuous land connection between Sulawesi and Sundaland (Voris, 2000), is not surprising and corresponds to the frequent dispersal across Wallace's line for freshwater crabs, frogs, reptiles, and mammals (Moss & Wilson, 1998). Possibly, the freshwater plume of the South Sunda River System enabled dispersal on driftwood from Java to Sulawesi during an eustatic sea-level lowstand, as hypothesized for freshwater crabs (Klaus et al., 2013).

*Polypedates leucomystax* spread to the Philippines from Java and then reached Japan close to the Holocene (Figure 2B). The samples from the Philippines (104 and 106) and Japan (105 and 107) were nested within the Java clade (Figure 2B), indicating that populations of *P. leucomystax* from the Philippines originated from Java and subsequently dispersed to Japan. Considering the massive distance and biogeographic barriers for amphibians that make a natural dispersal scenario highly unlikely, we consider it reasonable that transportation of agricultural products between islands facilitated the range expansion of *P. leucomystax* to the Philippines (Brown et al., 2010) and that the accidental transport of a few individuals with military cargo from somewhere around the Philippines established the populations on Ryukyus, as suggested by Kuraishi et al. (2009). We cannot reject the hypothesis that Pleistocene sea-level dynamics may have had effects on the diversification of this species as an explanation for the range expansion of *P. leucomystax*. However, further evidence is required to address this possibility.

In conclusion, *Polypedates* is an excellent model for biogeographic process studies, and the timing and pattern of its origin and migration fit well with the idea that it mostly originated in insular Southeast Asia during the Oligocene. In the process of northward dispersal, climate change influenced expansion and species diversification from Sundaland to mainland Southeast Asia. The Red River did not act as a diffuse filter barrier for species exchange until the end of the Miocene. From the early Pliocene, *P. leucomystax* dispersed all over Sundaland, with Java and Sumatra as source areas. Our findings not only corroborate the hypothesis about climatic and tectonic changes of island archipelagos of southeastern Asia using the genus *Polypedates*, but also highlight the importance to intergrate tectonics, climate changes and range

expansion to reveal the essence of biogeographical evolutionary process involved in diversification.

#### SCIENTIFIC FIELD SURVEY PERMISSION INFORMATION

All applicable international, national, and/or institutional guidelines for the care and use of animals were strictly followed. All animal sample collection protocols complied with the current laws of China. All animal procedures performed in this research were in accordance with the ethical standards of the institution or organization at which the study was conducted (Experimental Animal Ethics Committee of Chengdu Institute of Biology, Chinese Academy of Sciences; permit No.: 20192202).

#### SUPPLEMENTARY DATA

Supplementary data to this paper can be found online.

#### COMPETING INTERESTS

The authors declare that they have no competing interests.

#### AUTHORS' CONTRIBUTIONS

J.T.L. and K.Y. conceived the study; L.M.Y. and N.L.O. collected experimental samples; L.M.Y. and X.L.D. performed data analyses; L.M.Y. and X.L.D. prepared the initial manuscript draft; S.K. and D.C.J. worked on the approval of the manuscript. All authors read and approved the final version of the manuscript.

#### ACKNOWLEDGEMENTS

We would like to thank Dr. Yun-Yun Lv and Mr. Claudio Sabatelli for technical assistance and insightful comments and suggestions; Dr. Jordi López-Pujol for revising an earlier version of this manuscript; and Mr. Jin-Long Ren for photos.

Li-Mei Yuan<sup>1,2,#</sup>, Xi-Ling Deng<sup>1,2,#</sup>, De-Chun Jiang<sup>2</sup>,  
Sebastian Klaus<sup>3</sup>, Nikolai L. Orlov<sup>4</sup>, Kong Yang<sup>1,\*</sup>,  
Jia-Tang Li<sup>2,5,6,7,\*</sup>

<sup>1</sup> Institute of Qinghai-Tibetan Plateau, Southwest Minzu University, Chengdu, Sichuan 610041, China

<sup>2</sup> CAS Key Laboratory of Mountain Ecological Restoration and Bioresource Utilization & Ecological Restoration and Biodiversity Conservation Key Laboratory of Sichuan Province, Chengdu Institute of Biology, Chinese Academy of Sciences, Chengdu, Sichuan 610041, China

<sup>3</sup> Department of Ecology and Evolution, J.W. Goethe-Universität, Frankfurt/M., Hessen 60438, Germany

<sup>4</sup> Zoological Institute, Russian Academy of Sciences, St. Petersburg 199034, Russia

<sup>5</sup> Southeast Asia Biodiversity Research Institute, Chinese Academy of Sciences, Nay Pyi Taw 05282, Myanmar

<sup>6</sup> CAS Center for Excellence in Animal Evolution and Genetics, Chinese Academy of Sciences, Kunming, Yunnan 650223, China

<sup>7</sup> University of Chinese Academy of Sciences, Beijing, China

\*Authors contributed equally to this work

\*Corresponding authors, E-mail: lx-yk@163.com; lij@ciac.ac.cn

## REFERENCES

- Anczkiewicz R, Viola G, Müntener O, Thirlwall MF, Villa IM, Quong NQ. 2007. Structure and shearing conditions in the Day Nui Con Voi massif: implications for the evolution of the Red River shear zone in northern Vietnam. *Tectonics*, **26**(2): TC2002.
- Blair C, Davy CM, Ngo A, Orlov NL, Shi HT, Lu SQ, et al. 2013. Genealogy and Demographic History of a Widespread Amphibian throughout Indochina. *Journal of Heredity*, **104**(1): 72–85.
- Bouilhol P, Jagoutz O, Hanchar JM, Dudas FO. 2013. Dating the India-Eurasia collision through arc magmatic records. *Earth and Planetary Science Letters*, **366**: 163–175.
- Brown RM, Linkem CW, Siler CD, Sukumaran J, Esselstyn JA, Diesmos AC, et al. 2010. Phylogeography and historical demography of *Polypedates leucomystax* in the islands of Indonesia and the Philippines: evidence for recent human-mediated range expansion?. *Molecular Phylogenetics and Evolution*, **57**(2): 598–619.
- Buddhachat K, Suwannapoom C. 2018. Phylogenetic relationships and genetic diversity of the *Polypedates leucomystax* complex in Thailand. *PeerJ*, **6**: e4263.
- Chen JM, Poyarkov NA Jr, Suwannapoom C, Lathrop A, Wu YH, Zhou WW, et al. 2018. Large-scale phylogenetic analyses provide insights into unrecognized diversity and historical biogeography of Asian leaf-litter frogs, genus *Leptotalax* (Anura: Megophryidae). *Molecular Phylogenetics and Evolution*, **124**: 162–171.
- Cheng WJ, Harrison TM, Lovera OM. 1992. Thermochronology of the Ailaoshan-Red River shear zone-A case study of multiple diffusion domain model. *Seismology and Geology*, **14**(2): 122–128. (in Chinese)
- Clift PD, Hodges KV, Heslop D, Hannigan R, Van Long H, Calves G. 2008. Correlation of Himalayan exhumation rates and Asian monsoon intensity. *Nature Geoscience*, **1**(12): 875–880.
- Dutta SK, Manamendra-Arachchi K. 1996. The amphibian fauna of Sri Lanka. Colombo: Wildlife Heritage Trust of Sri Lanka.
- Fan DM, Yue JP, Nie ZL, Li ZM, Comes HP, Sun H. 2013. Phylogeography of *Sophora davidii* (Leguminosae) across the 'Tanaka-Kaiyong Line', an important phytogeographic boundary in Southwest China. *Molecular Ecology*, **22**(16): 4270–4288.
- Frost DR. 2019. Amphibian species of the world 6.0, an online reference. <http://research.amnh.org/vz/herpetology/amphibia/>.
- Gonzalez P, Su YC, Siler CD, Barley AJ, Sanguila MB, Diesmos AC, et al. 2014. Archipelago colonization by ecologically dissimilar amphibians: evaluating the expectation of common evolutionary history of geographical diffusion in co-distributed rainforest tree frogs in islands of Southeast Asia. *Molecular Phylogenetics and Evolution*, **72**: 35–41.
- Gower DJ, Kupfer A, Oommen OV, Himstedt W, Nussbaum RA, Loader SP, et al. 2002. A molecular phylogeny of *ichthyophiid caecilians* (Amphibia: Gymnophiona: Ichthyophiidae): out of India or out of South East Asia?. *Proceedings of the Royal Society B: Biological Sciences*, **269**(1500): 1563–1569.
- Grosjean S, Ohler A, Chuaynkern Y, Cruaud C, Hassanin A. 2015. Improving biodiversity assessment of anuran amphibians using DNA barcoding of tadpoles. *Case studies from Southeast Asia. Comptes Rendus Biologies*, **338**(5): 351–361.
- Hall R. 1998. The plate tectonics of Cenozoic SE Asia and the distribution of land and sea. In: Hall R, Holloway JD. *Biogeography and Geological Evolution of SE Asia*. Leiden: Backhuys Publishers, 99–131.
- Harrison TM, Chen WJ, Leloup PH, Ryerson FJ, Tapponnier P. 1992. An Early Miocene Transition in deformation regime within the Red River Fault Zone, Yunnan, And its significance for Indo-Asian tectonics. *Journal of Geophysical Research: Solid Earth*, **97**(B5): 7159–7182.
- Hijmans RJ, Cameron SE, Parra JL, Jones PG, Jarvis A. 2005. Very high resolution interpolated climate surfaces for global land areas. *International Journal of Climatology*, **25**(15): 1965–1978.
- Holt BG, Lessard JP, Borregaard MK, Fritz SA, Araújo MB, Dimitrov D, et al. 2013. An update of Wallace's zoogeographic regions of the world. *Science*, **339**(6115): 74–78.
- Hughes AC, Satasook C, Bates PJJ, Bumrungsri S, Jones G. 2011. Explaining the causes of the zoogeographic transition around the Isthmus of Kra: using bats as a case study. *Journal of Biogeography*, **38**(12): 2362–2372.
- Hughes JB, Round PD, Woodruff DS. 2003. The Indochinese–Sundaic faunal transition at the Isthmus of Kra: an analysis of resident forest bird species distributions. *Journal of Biogeography*, **30**(4): 569–580.
- Hutter CR, Lambert SM, Andriampomanana ZF, Glaw F, Vences M. 2018. Molecular phylogeny and diversification of Malagasy bright-eyed tree frogs (Mantellidae: Boophis). *Molecular Phylogenetics and Evolution*, **127**: 568–578.
- Inger RF. 1999. Distribution of amphibians in southern Asia and adjacent islands. In: Duellman WE. *Patterns of Distribution of Amphibians: A Global Perspective*. Baltimore: The John Hopkins University Press, 445–482.
- Jiang DC, Klaus S, Zhang YP, Hillis DM, Li JT. 2019. Asymmetric biotic interchange across the Bering Land Bridge between Eurasia and North America. *National Science Review*, **6**(4): 739–745.
- Klaus S, Schubart CD, Streit B, Pfenninger M. 2010. When Indian crabs were not yet Asian-biogeographic evidence for Eocene proximity of India and Southeast Asia. *BMC Evolutionary Biology*, **10**(1): 287.
- Klaus S, Selvandran S, Goh JW, Wowor D, Brandis D, Koller P, et al. 2013. Out of Borneo: neogene diversification of Sundaic freshwater crabs (Crustacea: Brachyura: Gecarcinucidae: *Parathelphusa*). *Journal of Biogeography*, **40**(1): 63–74.
- Klaus S, Morley RJ, Plath M, Zhang YP, Li JT. 2016. Biotic interchange between the Indian subcontinent and mainland Asia through time. *Nature Communications*, **7**(1): 12132.
- Kuraishi N, Matsui M, Ota H. 2009. Estimation of the Origin of *Polypedates leucomystax* (Amphibia: Anura: Rhacophoridae) Introduced to the Ryukyu Archipelago, Japan. *Pacific Science*, **63**(3): 317–325.
- Kuraishi N, Matsui M, Hamidy A, Belabut DM, Ahmad N, Panha S, et al. 2013. Phylogenetic and taxonomic relationships of the *Polypedates leucomystax* complex (Amphibia). *Zoologica Scripta*, **42**(1): 54–70.
- Kurniati H. 2011. Vocalization of Asian striped tree frogs, *Polypedates leucomystax* (Gravenhorst, 1829) and *P. iskandari* Riyanto, Mumpuni & McGuire, 2011. *Treubia*, **38**: 1–13.
- Lee Grismer L, Wood PL Jr, Aowphol A, Cota M, Grismer MS, Murdoch ML, et al. 2017. Out of Borneo, again and again: biogeography of the Stream

- Toad genus *Ansonia Stoliczka* (Anura: Bufonidae) and the discovery of the first limestone cave-dwelling species. *Biological Journal of the Linnean Society*, **120**(2): 371–395.
- Li JT, Li Y, Klaus S, Rao DQ, Hillis DM, Zhang YP. 2013. Diversification of rhacophorid frogs provides evidence for accelerated faunal exchange between India and Eurasia during the Oligocene. *Proceedings of the National Academy of Sciences of the United States of America*, **110**(9): 3441–3446.
- Lv YY, He K, Klaus S, Brown RM, Li JT. 2018. A comprehensive phylogeny of the genus *Kurixalus* (Rhacophoridae, Anura) sheds light on the geographical range evolution of frilled swamp treefrogs. *Molecular Phylogenetics and Evolution*, **121**: 224–232.
- Matsui M, Seto T, Utsunomiya T. 1986. Acoustic and karyotypic evidence for specific separation of *Polypedates megacephalus* from *P. leucomystax*. *Journal of Herpetology*, **20**(4): 483–489.
- Miller KG, Kominz MA, Browning JV, Wright JD, Mountain GS, Katz ME, et al. 2005. The Phanerozoic record of global sea-level change. *Science*, **310**(5752): 1293–1298.
- Moss SJ, Wilson MEJ. 1998. Biogeographic implications of the Tertiary palaeogeographic evolution of Sulawesi and Borneo. In: Hall R, Holloway JD. *Biogeography and Geological Evolution of SE Asia*. Leiden: Backhuys Publishers, 133–163.
- Myers N, Mittermeier RA, Mittermeier CG, Da Fonseca GAB, Kent J. 2000. Biodiversity hotspots for conservation priorities. *Nature*, **403**(6772): 853–858.
- Narins PM, Feng AS, Yong HS, Christensen-Dalsgaard J. 1998. Morphological, behavioral, and genetic divergence of sympatric morphotypes of the treefrog *Polypedates leucomystax* in peninsular Malaysia. *Herpetologica*, **54**(2): 129–142.
- O'Connell KA, Smart U, Smith EN, Hamidy A, Kurniawan N, Fujita MK. 2018. Within-island diversification underlies parachuting frog (*Rhacophorus*) species accumulation on the Sunda Shelf. *Journal of Biogeography*, **45**(4): 929–940.
- Pan SL, Dang NX, Wang JS, Zheng YT, Rao DQ, Li JT. 2013. Molecular Phylogeny Supports the Validity of *Polypedates impresus* Yang 2008. *Asian Herpetological Research*, **4**(2): 124–133.
- Pan T, Zhang YN, Wang H, Wu J, Kang X, Qian LF, et al. 2017. The reanalysis of biogeography of the Asian tree frog, *Rhacophorus* (Anura: Rhacophoridae): geographic shifts and climatic change influenced the dispersal process and diversification. *PeerJ*, **5**: e3995.
- Replumaz A, Lacassin R, Tapponnier P, Leloup PH. 2001. Large river offsets and Plio-Quaternary dextral slip rate on the Red River fault (Yunnan, China). *Journal of Geophysical Research: Solid Earth*, **106**(B1): 819–836.
- Rujirawan A, Stuart BL, Aowphol A. 2013. A new tree frog in the genus *Polypedates* (Anura: Rhacophoridae) from southern Thailand. *Zootaxa*, **3702**(6): 545–565.
- Searle MP. 2006. Role of the Red River Shear zone, Yunnan and Vietnam, in the continental extrusion of SE Asia. *Journal of the Geological Society*, **163**(6): 1025–1036.
- Sutthiwiseta T, Taksintum W, Arunyawat U, Sangthong P, Jantrarotai P. 2020. Molecular identification of the morphologically cryptic Asian common treefrogs (Anura: Rhacophoridae, *Polypedates leucomystax* complex) in Thailand. *Agriculture and Natural Resources*, **54**(1): 1–8.
- Tang Y, Liu JL, Tran MD, Song ZJ, Wu WB, Zhang ZC, et al. 2013. Timing of left-lateral shearing along the Ailao Shan-Red River shear zone: constraints from zircon U-Pb ages from granitic rocks in the shear zone along the Ailao Shan Range, Western Yunnan, China. *International Journal of Earth Sciences*, **102**(3): 605–626.
- Taylor EH. 1962. The amphibian fauna of Thailand. *The University of Kansas Science Bulletin*, **43**: 265–599.
- Trépanier TL, Lathrop A, Murphy RW. 1999. *Rhacophorus leucomystax* in Vietnam with acoustic analyses of courtship and territorial calls. *Asiatic Herpetological Research*, **8**: 102–106.
- von Tschudi JJ. 1838. Classification der Batrachier mit Berücksichtigung der Fossilen Thiere Dieser Abtheilung der Reptilien. Neuchâtel: Petitpierre.
- Voris HK. 2000. Maps of Pleistocene sea levels in Southeast Asia: shorelines, river systems and time durations. *Journal of Biogeography*, **27**(5): 1153–1167.
- Wallace AR. 1876. *The Geographical Distribution of Animals*. Vol. 2. London: Macmillan.
- Wan SM, Kürschner WM, Clift PD, Li AC, Li TG. 2009. Extreme weathering/erosion during the Miocene climatic optimum: evidence from sediment record in the South China Sea. *Geophysical Research Letters*, **36**(19): L19706.
- Werner YL. 1996. A complete guide to scientific and common names of reptiles and amphibians of the world by Norman Frank, Erica Ramus. *Copeia*, **1996**(4): 1066–1069.
- Wilkinson M, Sheps JA, Oommen OV, Cohen BL. 2002. Phylogenetic relationships of Indian caecilians (Amphibia: Gymnophiona) inferred from mitochondrial rRNA gene sequences. *Molecular Phylogenetics and Evolution*, **23**(3): 401–407.
- Woodruff DS, Turner LM. 2009. The Indochinese–Sundaic zoogeographic transition: a description and analysis of terrestrial mammal species distributions. *Journal of Biogeography*, **36**(5): 803–821.
- Yuan ZY, Zhang BL, Raxworthy CJ, Weisrock DW, Hime PM, Jin JQ, et al. 2019. Natatanuran frogs used the Indian Plate to step-stone disperse and radiate across the Indian Ocean. *National Science Review*, **6**(1): 10–14.
- Zachos JC, Dickens GR, Zeebe RE. 2008. An early Cenozoic perspective on greenhouse warming and carbon-cycle dynamics. *Nature*, **451**(7176): 279–283.
- Zhang BL, Liu RX, Xiang HF, Wan JL, Huang XN. 2009. FT dating of fault rocks in the central-southern section of the Red River Fault zone and its geological implications. *Seismology and Geology*, **31**(1): 44–56. (in Chinese)
- Zhang DR, Chen MY, Murphy RW, Che J, Pang JF, Hu JS, et al. 2010a. Genealogy and palaeodrainage basins in Yunnan Province: phylogeography of the Yunnan spiny frog, *Nanorana yunnanensis* (Dicroglossidae). *Molecular Ecology*, **19**(16): 3406–3420.
- Zhang MW, Rao DQ, Yang JX, Yu GH, Wilkinson JA. 2010b. Molecular phylogeography and population structure of a mid-elevation montane frog *Leptobrachium ailaonicum* in a fragmented habitat of southwest China. *Molecular Phylogenetics and Evolution*, **54**(1): 47–58.
- Zhang P, Zhou H, Liang D, Liu YF, Chen YQ, Qu LH. 2005. The complete mitochondrial genome of a tree frog, *Polypedates megacephalus* (Amphibia: Anura: Rhacophoridae), and a novel gene organization in living amphibians. *Gene*, **346**: 133–143.