

RESEARCH ARTICLE

Association of N-Linked Glycoprotein Acetyls and Colorectal Cancer Incidence and Mortality

Paulette D. Chandler^{1*}, Akintunde O. Akinkuolie^{1,2}, Deirdre K. Tobias^{1,3}, Patrick R. Lawler^{1,2,3}, Chungying Li¹, M. Vinayaga Moorthy¹, Lu Wang^{1,3}, Daniel A. Duprez⁴, David R. Jacobs⁵, Robert J. Glynn^{1,3}, James Otvos⁶, Margery A. Connelly⁶, Wendy S. Post^{7,8}, Paul M. Ridker^{1,2,3}, JoAnn E. Manson^{1,3}, Julie E. Buring^{1,3}, I-Min Lee^{1,3}, Samia Mora^{1,2*}

1 Division of Preventive Medicine, Brigham and Women's Hospital, Harvard Medical School, Boston, Massachusetts, United States of America, **2** Division of Cardiovascular Medicine, Brigham and Women's Hospital, Harvard Medical School, Boston, Massachusetts, United States of America, **3** Department of Epidemiology, Harvard T.H. Chan School of Public Health, Boston, Massachusetts, United States of America, **4** Department of Medicine, University of Minnesota, Minneapolis, Minnesota, United States of America, **5** Division of Epidemiology and Community Health, School of Public Health, University of Minnesota, Minneapolis, Minnesota, United States of America, **6** LabCorp, Raleigh, North Carolina, United States of America, **7** Division of Cardiology, Department of Medicine, Johns Hopkins University School of Medicine, Baltimore, Maryland, United States of America, **8** Department of Epidemiology, Bloomberg School of Public Health, Johns Hopkins University, Baltimore, Maryland, United States of America

* pchandler@partners.org (PDC); smora@partners.org (SM)



OPEN ACCESS

Citation: Chandler PD, Akinkuolie AO, Tobias DK, Lawler PR, Li C, Moorthy MV, et al. (2016) Association of N-Linked Glycoprotein Acetyls and Colorectal Cancer Incidence and Mortality. PLoS ONE 11(11): e0165615. doi:10.1371/journal.pone.0165615

Editor: Shengtao Zhou, West China Second Hospital, Sichuan University, CHINA

Received: July 5, 2016

Accepted: October 15, 2016

Published: November 30, 2016

Copyright: © 2016 Chandler et al. This is an open access article distributed under the terms of the [Creative Commons Attribution License](https://creativecommons.org/licenses/by/4.0/), which permits unrestricted use, distribution, and reproduction in any medium, provided the original author and source are credited.

Data Availability Statement: Data made available to all interested researchers upon request from Women's Health Study (WHS) data usage review committee. The Multi-Ethnic Study of Atherosclerosis (MESA) mechanism for public access to data is via the BioLINCC repository (or dbGAP in the case of genetic data). Any measurements derived as a part of the main study are uploaded regularly. Data that are collected via an ancillary study are uploaded to BioLINCC upon completion of the ancillary study. Due to the complexity of MESA participant consents, and the

Abstract

Background

Acute phase proteins highlight the dynamic interaction between inflammation and oncogenesis. GlycA, a novel nuclear magnetic resonance (NMR) inflammatory marker that identifies primarily circulating N-acetyl glycan groups attached to acute phase proteins, may be a future CRC risk biomarker.

Methods

We examined the association between GlycA and incident CRC and mortality in two prospective cohorts (N = 34,320); Discovery cohort: 27,495 participants from Women's Health Study (WHS); Replication cohort: 6,784 participants from Multi-Ethnic Study of Atherosclerosis (MESA). Multivariable Cox models were adjusted for clinical risk factors and compared GlycA to acute phase proteins (high-sensitivity C-reactive protein [hsCRP], fibrinogen, and soluble intercellular adhesion molecule-1 [sICAM-1]).

Results

In WHS (median follow-up 19 years, 337 cases, 103 deaths), adjusted HRs (95% CIs) per SD increment of GlycA for CRC incidence and mortality were 1.19 (1.06–1.35; p = 0.004) and 1.24 (1.00–1.55; p = 0.05), respectively. We replicated findings in MESA (median follow-up 11 years, 70 cases, 23 deaths); HRs (95% CIs) per SD of GlycA for CRC incidence and mortality were 1.32 (1.06–1.65; p = 0.01) and 1.54 (1.06–2.23; p = 0.02), respectively, adjusting for age, sex, and race. Pooled analysis, adjusted HR (95% CI) per SD of GlycA for CRC incidence and mortality was 1.26 (1.15–1.39; p = 1 x 10⁻⁶). Other acute phase proteins

difficulties of maintaining multiple copies of public access data, this is the only public access repository that MESA is approving at the present time. In addition to the public access repository, interested investigators may also access the data through the MESA Coordinating Center at the University of Washington. Use of the data via this mechanism is overseen by standard MESA policies and procedures, which assure that participant consents are honored and that the topic does not overlap with previously proposed or published work.

Funding: The WHS 529 is supported by grants CA-047988, HL-043851, HL-530 080467, HL-099355, and UM1 CA182913 from the National Institutes of Health, Bethesda, MD. MESA and the MESA SHARe project are conducted and supported by the National Heart, Lung, and Blood Institute (NHLBI) in collaboration with MESA investigators. Support for MESA is provided by contracts N01-HC-95159, N01-HC-95160, N01-HC-95161, N01-HC-95162, N01-534 HC-95163, N01-HC-95164, N01-HC-95165, N01-HC-95166, N01-HC-95167, N01-HC-95168, N01-HC-95169 and CTSA UL1-RR-024156. P.D. Chandler received support from grant 127524-MRSG-15-012-01-CNE from the American Cancer Society. A.O. Akinkoulie and P.R. Lawler received support from NIH T32 (HL007575). D.K. Tobias is supported by a Mentored Research Scientist Development Award from the NIH NIDDK (K01DK103720). The biomarker measurements were supported by the Donald W. Reynolds Foundation, the Foundation Leducq, and the American Heart Association. Margery A. Connolly and James D. Otvos are employees of LabCorp. LabCorp provided support in the form of salaries for authors MAC and JDO, but did not have any additional role in the study design, data collection and analysis, decision to publish, or preparation of the manuscript. LipoScience (now LabCorp; Raleigh, NC) performed the analysis of GlycA based on LipoProfile-3 at no additional cost to the studies but did not have any additional role in the study design, data collection and analysis, decision to publish, or preparation of the manuscript. The content is solely the responsibility of the authors and does not necessarily represent the official views of the National Institutes of Health. These funding agencies had no role in the design and execution of the current study. The specific roles of these authors are articulated in the "author contributions" section.

Competing Interests: We have the following interests: Samia Mora 500 has received research support from NHLBI, AstraZeneca, and Atherotech Diagnostics; and served as a consultant to Lilly,

(hsCRP, fibrinogen, and sICAM-1) had weaker or no association with CRC incidence, while only fibrinogen and GlycA were associated with CRC mortality.

Conclusions

The clinical utility of GlycA to personalize CRC therapies or prevention warrants further study.

Trial Registration

ClinicalTrials.gov: WHS [NCT00000479](https://clinicaltrials.gov/ct2/show/study/NCT00000479), MESA [NCT00005487](https://clinicaltrials.gov/ct2/show/study/NCT00005487)

Introduction

The emerging field of acute phase proteins as cancer biomarkers[1] highlights the dynamic interaction between inflammation and tumor cells.[2] Acute phase proteins play a key role in chronic inflammation, and regulate complex changes in the tumor microenvironment such as angiogenesis[3] and proliferation.[4] GlycA, a novel marker of inflammation measured by targeted metabolomics using nuclear magnetic resonance (NMR) spectroscopy, identifies N-acetyl glycan groups (Fig A in [S1 File](#)) mostly attached to acute phase glycoproteins (predominantly α 1-acid glycoprotein [orosomucoid], haptoglobin, α 1-antitrypsin, α 1-antichymotrypsin, and transferrin).[5] C-reactive protein (CRP), an acute phase protein that does not contribute to the GlycA signal, as well as the acute phase proteins that do contribute (α 1-acid glycoprotein, haptoglobin, α 1-antitrypsin, α 1-antichymotrypsin, and transferrin), have differential glycosylation patterns that have been linked to distinct cancer types including CRC and stages of malignancy.[6–8] These glycosylation signatures may be useful biochemical tumor markers for initial diagnosis, staging and monitoring of colorectal cancer.[9]

To date, no established inflammatory biomarker has been consistently associated with incident colorectal cancer.[10, 11] Prospective studies have evaluated pre-diagnostic circulating CRP levels and CRC risk, but with inconsistent results.[12] Currently, carcinoembryonic antigen (CEA), also a glycoprotein, is the crucial biomarker for monitoring CRC recurrence and prognosis.[13] [14] The combination of CEA and the glycosylated acute phase proteins (haptoglobin, α 1-antitrypsin, and α 1-acid glycoprotein) was more strongly associated with CRC progression than CEA alone in CRC patients receiving chemotherapy.[15] CEA has low specificity for CRC, thereby limiting its usefulness for identifying incident CRC.[16] With the limited clinical applicability of CEA, additional candidates are needed as CRC risk markers. Quantifying and defining the human glycome in CRC has received interest as a novel tool to identify markers of CRC and potential mechanistic mediators of oncogenesis. [17] [18, 19] Hence, we hypothesized that GlycA, a novel systemic inflammatory biomarker of protein glycan N-acetyl groups, is related to incident colorectal cancer and mortality. Further, we compared the CRC cancer and mortality risk associated with GlycA with other circulating acute phase proteins, high-sensitivity C-reactive protein (hsCRP), fibrinogen, and soluble intracellular adhesion molecule 1 (sICAM-1).

Pfizer, and Cerenis Therapeutics. Paul Ridker has received research support from AstraZeneca, Novartis, Roche, and Sanofi-Aventis; Paul Ridker and Brigham and Women's Hospital have patents for the use of inflammatory biomarkers for cardiovascular disease and diabetes. Margery A. Connolly and James D. Otvos are employees of LabCorp. Provisional Patent Application (Paulette Chandler, Samia Mora, and James Otvos) filed June 3, 2016, entitled "Methods and Systems for Predicting Colorectal Cancer Incidence and Mortality" (patent application serial number 62/345,453). There are no further patents, products in development or marketed products to declare. This does not alter our adherence to all the PLOS ONE policies on sharing data and materials.

Materials and Methods

Discovery Study Population

The discovery study population was derived from the Women's Health Study (WHS, $n = 39,876$), a completed randomized controlled 2x2x2 factorial trial of aspirin, β -carotene, or vitamin E versus placebo in the primary prevention of cancer and cardiovascular disease.[20, 21] Women were healthcare professionals, ≥ 45 years old, and free of cancer and cardiovascular disease at study entry (1992–1996). After trial completion, extended post-trial follow-up of participants remained on-going with follow-up reported herein through 2013. Of the 39,876 randomized women in the trial, 28,345 (71%) provided a baseline blood sample. The study was approved by the Human Subjects Committee at the Brigham and Women's Hospital, Boston, MA. Additional information about the study population is provided in the [S1 File](#).

Replication Cohort

We evaluated the associations found in WHS in an independent multiethnic cohort of men and women from the Multi-Ethnic Study of Atherosclerosis (MESA).[22] MESA was chosen because GlycA levels were already measured in MESA to evaluate the association between GlycA and cardiovascular disease. Briefly, this community-based study enrolled 6,814 men and women, ages 45–84 years, of African-American (28%), Hispanic (22%), White (38%), and Chinese-American (12%) ethnicity, free of self-reported active treatment of cancer and cardiovascular disease at baseline entry (2000–2002). The study was approved by the institutional review boards of the participating institutions, and subjects gave written informed consent.[22] Standardized questionnaires and procedures were used to determine age, sex, ethnicity, and clinical features.[22] GlycA was measured at baseline among 6,784 of the 6,814 participants.

Statistical analyses

Baseline characteristics of participants across quartiles of GlycA were summarized as means (standard deviation [SD]), or medians (25th to 75th percentiles) for quantitative variables, and as percentages for qualitative variables. GlycA has a normal distribution from the spectral deconvolution algorithm used to quantify GlycA signal. Comparisons were statistically assessed with the Wilcoxon rank sum and χ^2 tests. Spearman coefficients were used to correlate GlycA with risk factors and inflammatory biomarkers. Person-years of follow-up and rates were calculated, and cumulative incidence was obtained according to quartiles of GlycA and log-rank test was used to compare curves. Hazard ratios (HRs) and 95% confidence intervals (CIs) of incident CRC events and mortality were calculated from Cox-proportional hazard regression for mid-quartile scores and per SD increment. Exposure time was calculated as the time from enrollment to incidence/death or censoring. In the initial WHS analysis, incident CRC cases only include nonfatal CRC to be consistent with prior WHS analyses. However, for the pooled analysis of WHS and MESA, WHS CRC cases included fatal CRC cases. As there was no significant interaction between CRC, GlycA, and randomization arms (including aspirin), the groups were pooled and indicators of the randomized treatments were included as covariables. SAS version 9.4 (SAS Institute, Cary, NC, USA) was used for all analyses except the pooled analysis (STATA version 14, College Station, TX).

Adjustment for potential confounders or mediators was completed with sequential models. Additional information about the models is provided in the [S1 File](#). P for trend was calculated across quartiles for WHS and tertiles for MESA (given smaller number of cases, $n = 70$ cases). The longitudinal CRC incidence associated with GlycA in WHS did not violate the proportional

hazards assumption (p value = 0.62 for test of proportional hazard assumption in a model assuming linearity of GlycA). To examine the possibility of reverse causation, we performed sensitivity analysis excluding CRC cases occurring during the first 2 years and repeated this after excluding CRC cases occurring within the first 5 years. We compared the CRC cancer incidence and mortality risks associated with GlycA to that of other established systemic inflammatory biomarkers (ln hsCRP, fibrinogen, and sICAM-1).

Following replication in MESA, the study specific estimates were combined in a pooled analysis and pooled into Forest plots using random effects models to account for inter-study heterogeneity. For the CRC pooled analysis, WHS incidence cases included fatal and nonfatal cases and MESA incidence cases included fatal and nonfatal cases. Additional information about the analysis plan is provided in the [S1 File](#). All analyses were specified *a priori* by the academic investigators except where explicitly indicated. WHS and MESA are registered at ClinicalTrials.gov: WHS NCT00000479 and MESA NCT00005487, respectively.

Results and Discussion

WHS

The mean age (SD) of the WHS cohort at baseline was 54.7 (7.1) years. Stratification by GlycA quartiles identified a higher prevalence of CRC risk factors (e.g. BMI) among those with higher levels of GlycA ([Table 1](#)).

Likewise, levels of hsCRP, sICAM-1, and fibrinogen were higher by increasing quartiles of GlycA, and correlated moderately with GlycA with the strongest correlation for hsCRP (Spearman correlation coefficients 0.30 to 0.61; Table A in [S1 File](#)).

Incident CRC and Mortality

Over a median follow-up of 19 years among the 27,495 WHS participants (Fig B in [S1 File](#)), 337 incident CRC cases and 103 CRC deaths occurred. For WHS, incident CRC cases only include nonfatal CRC. Cumulative incidence curves for CRC events (adjusted for age) diverged according to quartiles of GlycA ([Fig 1](#), p for log-rank < 0.0001; [Table 2](#)).

The risk factor-adjusted model 2 HR (95% CI) per SD (68.4 $\mu\text{mol/L}$) higher GlycA for CRC incidence was 1.19 (1.06–1.35; $p = 0.004$) and CRC mortality 1.24 (1.00–1.55; $p = 0.05$) ([Table 2](#)). CRC incidence and mortality increased by quartiles of GlycA with minimal attenuation after adjustment for clinical variables.

MESA Replication

Among 6,784 MESA participants (median follow-up: 11 years) 70 incident CRC cases and 23 CRC deaths occurred ([Fig 1](#)).

Compared with WHS, MESA participants were older (mean [SD] age of 62.2 (10.2)) and were 47.2% male (Table B in [S1 File](#)). CRC incidence and mortality were increased per SD (62 $\mu\text{mol/L}$) of GlycA with similar magnitudes of association as in the WHS although these associations were no longer significant in Model 2 after accounting for clinical risk factors, HR (95%CI) were 1.21 (0.95–1.55; $p = 0.12$) and 1.34 (0.88–2.03; $p = 0.17$) respectively. (Table C in [S1 File](#))

Evidence of GlycA-CRC Risk beyond the Other Acute Phase Proteins

Examination of hsCRP, sICAM-1, and fibrinogen with CRC risk factor-adjusted model 2 per SD yielded no significant associations with CRC incidence or mortality with any of the systemic inflammatory biomarkers with the exception of fibrinogen (Table D in [S1 File](#)). Fibrinogen was significantly associated with increased risk of CRC death in quartile analysis Q1 to Q4,

Table 1. Baseline characteristics of WHS participants by quartiles of GlycA^a.

	Quartile 1	Quartile 2	Quartile 3	Quartile 4
	≤326 μmol/L	327–369 μmol/L	370–416 μmol/L	>416 μmol/L
N	6992	6791	6865	6847
Age, years	51(48, 57)	53 (49, 59)	54 (50, 60)	54 (50, 60)
Race/ethnicity, %				
Caucasian	93.7	94.8	95.1	94.5
Hispanic	1.0	1.2	1.1	1.0
Black	1.7	1.7	1.6	2.4
Asian/Pacific Islander	2.5	1.3	1.1	0.6
American Indian/Alaskan Native	0.3	0.3	0.5	0.5
Postmenopausal, %	45.9	53.8	57.5	60.5
Randomized aspirin, % ^b	50.3	48.3	50.7	50.7
Randomized vitamin E, % ^c	49.9	51.1	49.3	49.9
Randomized beta carotene, % ^c	49.6	50.0	49.3	50.3
Body mass index, kg/m ² mean (SD)	23.6 (3.5)	25.1 (4.2)	26.5 (4.7)	28.7 (5.7)
Physical activity, MET-hrs/week, mean (SD)	17.8 (20.8)	15.9 (19.5)	13.5 (16.7)	11.7 (15.5)
Smoking, %				
Current	7.7	10.6	12.6	15.8
Past	36.7	37.6	36.9	35.4
Never	55.6	51.8	50.3	48.7
Family history of CRC, % ^c	10.0	10.7	10.6	10.3
History of polyps, % ^d	2.1	2.7	2.7	2.7
Fruit and vegetable intake, servings/d, mean (SD) ^d	6.2 (3.9)	6.2 (3.5)	6.1 (3.4)	6.0 (3.6)
Fiber intake, g/d, mean (SD)	19.4 (8.4)	19.1 (8.0)	19.1 (8.3)	18.7 (8.0)
Red meat, servings/d, mean (SD)	0.7 (0.5)	0.7 (0.6)	0.7 (0.6)	0.8 (0.6)
Dietary calcium, mg/d, mean (SD) ^b	794.1(357.0)	789.7 (357.7)	792.6 (359.8)	775.9 (355.2)
Alcohol, g/d, mean (SD)	4.7 (8.1)	4.5 (8.6)	4.0 (8.2)	3.3 (8.0)
Total calories, kcal/d, mean (SD) ^c	1718 (515.5)	1726 (524.0)	1737 (531)	1738 (545)
Multivitamin use, % ^c	86.2	85.4	86.3	85.2
Lipid lowering medications, %	1.2	2.3	3.2	6.0
Postmenopausal hormone use- current, %	35.5	40.8	45.3	49.0
Diabetes, %	1.0	1.5	2.1	4.9
Hemoglobin A1c, %	4.9 (4.8, 5.1)	5.0 (4.8, 5.2)	5.0 (4.9, 5.2)	5.1 (4.9, 5.3)
hsCRP, mg/L	0.7 (0.4, 1.5)	1.5 (0.7, 2.9)	2.6 (1.4,4.6)	5.1 (2.8, 8.3)
sICAM, ng/mL	317 (281, 360)	337 (297,383)	349 (308, 400)	373 (328, 430)
Fibrinogen, mg/dL	314 (279, 350)	341 (304, 384)	363 (321, 409)	402 (353, 457)

Data presented as median (25th quartile, 75th quartile) unless otherwise indicated.

Abbreviations: BMI = body mass index, MET-hrs/wk = metabolic equivalent hours per week, hsCRP = high sensitivity C-reactive protein, sICAM-1 = soluble intracellular adhesion molecule 1.

^a P value <0.0001 unless otherwise indicated.

^b P value = 0.01

^c P value >0.05

^d 0.01<P value <0.05

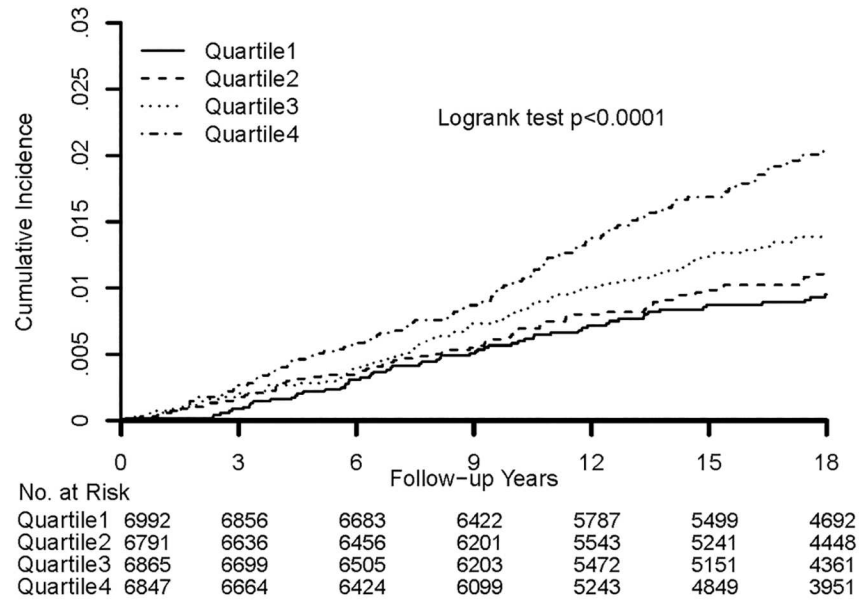
doi:10.1371/journal.pone.0165615.t001

1.0 (ref), 0.97 (0.45–2.11), 1.79 (0.90–3.57), 1.81 (0.90–3.66), p for trend = 0.04 but not for per 1 SD.

Then we performed sensitivity analyses to investigate the potential risk associated with GlycA beyond the known markers of systemic inflammation (Table E in [S1 File](#)). Incident

A

WHS GlycA and Colorectal Cancer



B

MESA GlycA and Colorectal Cancer

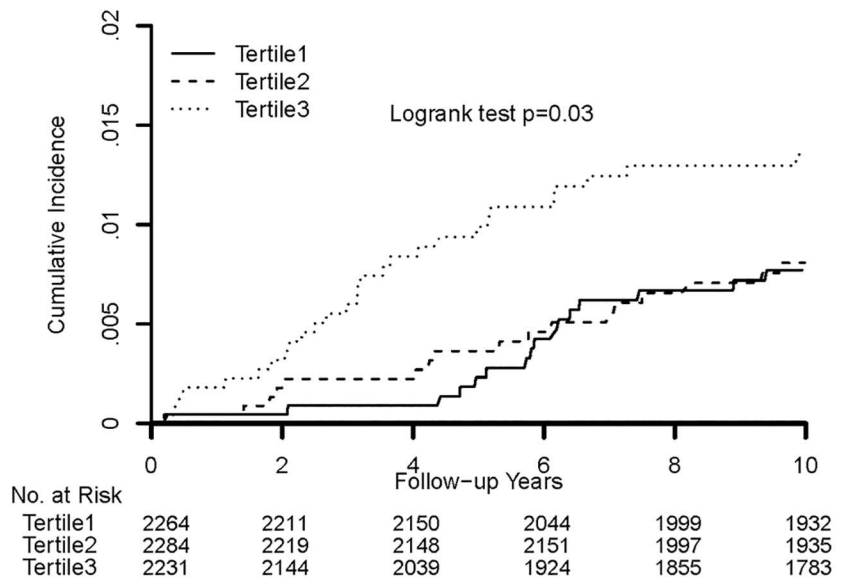


Fig 1. Colorectal Cancer Cumulative Incidence According to GlycA Quartile in WHS (a); Colorectal Cancer Cumulative Incidence According to MESA GlycA Tertiles (b).

doi:10.1371/journal.pone.0165615.g001

Table 2.

GlycA	Quartile 1	Quartile 2	Quartile 3	Quartile 4	P for trend	Per SD*	P Value
Range, $\mu\text{mol/L}$	≤ 326	327–369	370–416	> 416			
Incident CRC, N cases/total	61/6992	70/6791	86/6865	120/6847			
Incident Rate per 1,000 person-years	0.52	0.62	0.76	1.09			
CRC deaths, N cases/total	19/6992	21/6791	26/6865	37/6847			
Death Rate per 1,000 person-years	0.15	0.17	0.21	0.31			
Incident CRC, model 1	1.0 (ref)	1.08 (0.77–1.53)	1.29 (0.93–1.79)	1.83 (1.35–2.50)	< 0.0001	1.26 (1.13–1.39)	< 0.0001
Incident CRC, model 2	1.0 (ref)	1.05 (0.73–1.51)	1.23 (0.87–1.75)	1.55 (1.09–2.20)	0.006	1.19 (1.06–1.35)	0.004
CRC death, model 1	1.0 (ref)	1.01 (0.54–1.88)	1.21 (0.67–2.19)	1.74 (1.00–3.03)	0.02	1.29 (1.07–1.55)	0.008
CRC death, model 2	1.0 (ref)	0.92 (0.47–1.80)	1.26 (0.67–2.36)	1.46 (0.77–2.76)	0.15	1.24 (1.00–1.55)	0.05

* Model 1 Hazard ratio from Cox regression models adjusted for age and trial treatment assignment

Model 2 Hazard ratio from Cox regression models adjusted for age, trial treatment assignment, race, family history of colorectal cancer, alcohol, exercise, smoking, menopausal status, postmenopausal hormone use; alternative healthy eating index, multivitamin use; intake of red meat, vegetables and fruits, supplemental and dietary calcium, fiber, total calories, history of polyps, body mass index, and hemoglobin A1c.

doi:10.1371/journal.pone.0165615.t002

CRC risk associated with GlycA remained significant after additionally adjusting for any of the three systemic inflammatory biomarkers (hsCRP, fibrinogen, or sICAM-1.) with slightly increased magnitudes of association: HR (95%CI) of incident CRC per SD of GlycA after adjusting model 2 for either fibrinogen, hsCRP, or sICAM were: 1.22 (1.07–1.39; $p = 0.003$); 1.27 (1.10–1.45; $p = 0.0009$); and 1.20 (1.06–1.36; $p = 0.004$) respectively. Magnitudes of association also remained robust in quartile analysis. (Table E in [S1 File](#)) Results were similar when CRC death was examined.

Stratification by CRC risk factors

In WHS analyses stratified by CRC risk factors such as age, BMI, increasing GlycA remained associated with increased risk of incident CRC with no evidence of effect modification by the established CRC risk factors (p for interaction ≥ 0.06 for all subgroups except multivitamin subgroup p for interaction = 0.05) ([Fig 2](#)).

Sensitivity Analysis by Follow-Up Time

WHS sensitivity analyses were done to examine potential reverse causation between GlycA and CRC. With exclusion of the first 2 years of follow-up, model 2 HR (95% CI) per SD higher GlycA was 1.18 (1.04–1.34; $p = 0.009$). Excluding the first 5 years of follow-up, HR and 95% CI per SD was 1.20 (1.05–1.39; $p = 0.01$). The observed point-estimates were also similar for the association between GlycA and incident CRC and mortality during the aspirin and vitamin E trial 10-year treatment period (208 CRC cases and 51 deaths, data not shown).

Associations with tumor characteristics

In WHS exploratory analyses, some CRC tumor characteristics were significantly associated with GlycA ([Fig 2](#)), including higher Duke stage, proximal tumor location, and less differentiated tumors.

Incident Colorectal Cancer in Subgroups

Subgroup multivariate hazard ratios (HRs) for incident colorectal cancer were adjusted for trial treatment assignment, age, race, family history of colorectal cancer, alcohol, exercise,

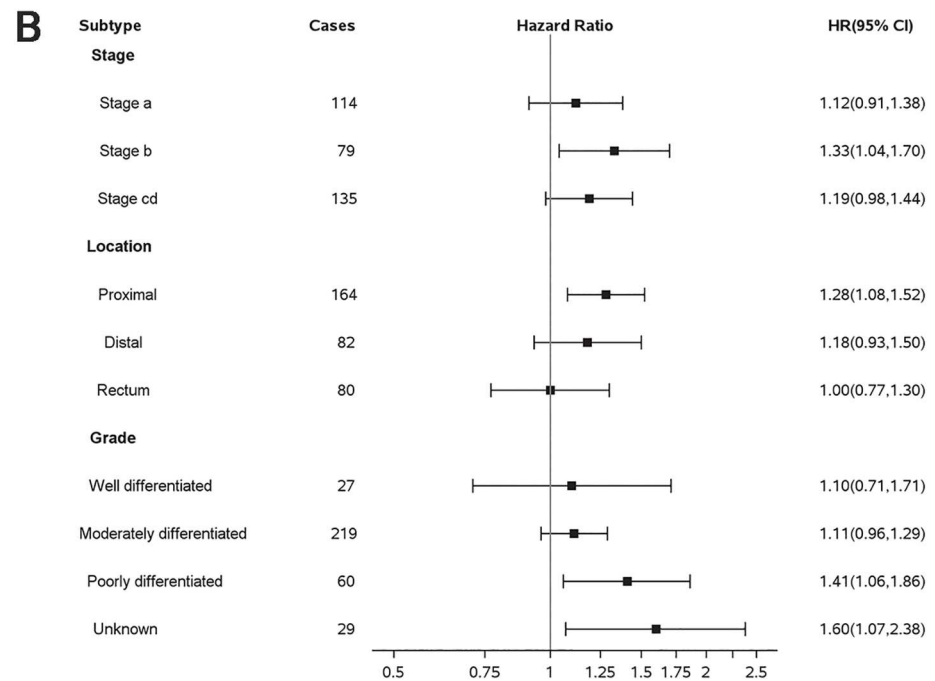
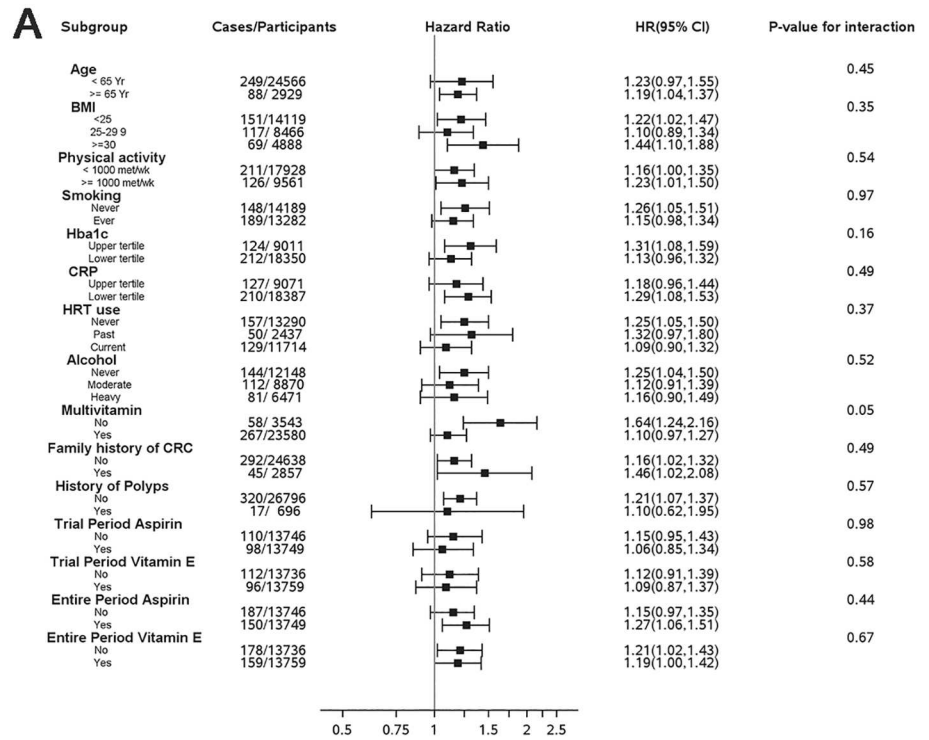


Fig 2. Hazard Ratios and 95% confidence intervals per GlycA SD for Incident Colorectal Cancer in Subgroups (a); Hazard Ratios and 95% confidence intervals per GlycA SD for Incident Colorectal Cancer Tumor Characteristics (Stage, Location, Grade) (b).

doi:10.1371/journal.pone.0165615.g002

Figure 3a.

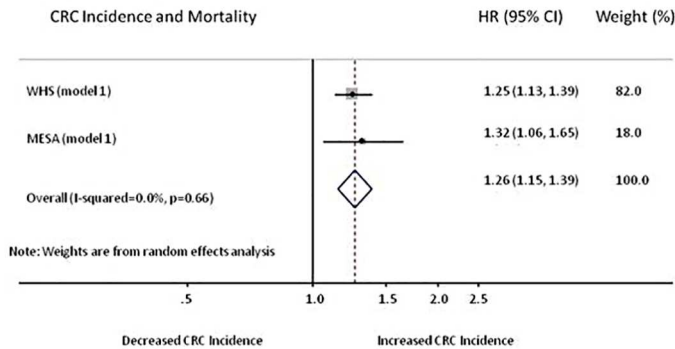


Figure 3b.

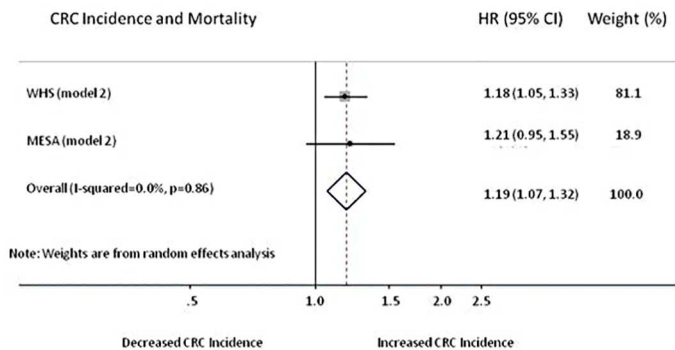


Fig 3. Pooled Associations between GlycA and Colorectal Cancer Incidence and Mortality.

doi:10.1371/journal.pone.0165615.g003

smoking, post menopausal versus premenopausal, postmenopausal hormone use-never, past, current; alternative healthy eating index continuous, multivitamin yes/no current use; red meat intake servings/d, total vegetable and fruits intake servings/day, supplemental calcium, dietary calcium, fiber grams/day, total calories, history of polyps, randomized aspirin use during trial period, randomized vitamin E use during trial period, entire follow-up period for aspirin arm, entire follow-up period for vitamin E arm.

Pooled Analysis

From random effects pooled analysis of the CRC incidence and mortality in the WHS and MESA cohorts per SD increment in GlycA, the pooled model 1 HR (95% CI) per SD for CRC incidence and mortality was 1.26 (1.15–1.39; $p = 1 \times 10^{-6}$) with no significant heterogeneity (I-squared = 0% $p = 0.66$), with similar results for the more fully adjusted model 2 (Fig 3).

Glycosylation of acute phase proteins in cancer yields specific glycoforms of specific glycoproteins and may provide useful tumor markers.[23] This study examined the longitudinal

association between an NMR-measured plasma summary biomarker of circulating N-acetyl glycans on acute phase proteins and CRC incidence and mortality among initially healthy individuals. Using data on 27,495 initially healthy women with over 19 years of follow-up in the WHS, GlycA, an aggregate of circulating N-acetyl groups of N-acetylglucosamine and N-acetylgalactosamine glycan moieties, was significantly associated with CRC incidence and mortality. The CRC incidence and mortality findings were replicated in an independent multi-ethnic cohort of 6,784 men and women from the MESA study. To our knowledge, no other study has longitudinally evaluated the association of a glycan based inflammatory biomarker and incident CRC in individuals free of cancer at baseline. WHS sensitivity analyses excluding the first 2 or 5 years emphasize the absence of reverse causation. The robust association between GlycA and CRC incidence and mortality suggests that glycosylation changes may contribute the role of inflammation on CRC carcinogenesis.

A prior study demonstrated that GlycA levels are chronically elevated for over a decade and associated with a myriad of inflammatory cytokines.[24] Although individuals with elevated GlycA were more likely to have risk factors associated with CRC, CRC incidence remained significantly associated with increased GlycA after adjusting for clinical risk factors. GlycA correlated with established acute phase proteins, but was an important predictor of CRC incidence and mortality after adjustment for these biomarkers. Overall, these results suggest a robust association with a measure of circulating N-linked glycoprotein acetyls (predominantly on acute phase proteins) and CRC incidence and mortality among initially healthy individuals. In exploratory analyses, GlycA was associated with more advanced stage tumors. Tumor stage is considered the strongest prognostic factor in CRC. Higher GlycA levels were also associated with increased risk of proximal tumors, which are more difficult to detect and prevent by routine colonoscopy.[25]

The model of glycosylation-dependent promotion of tumor progression has developed in conjunction with clinicopathological studies.[17] Increased expression of some glycosyl moieties promotes invasion and metastasis, leading to shorter patient survival rates, whereas expression of other glycosyl epitopes suppresses tumor progression, resulting in higher survival rates.[26] Inflammation and immune function are united in the pathogenesis of cancers[27, 28] and underlie the mechanistic importance of protein post-translational glycosylation in the pathogenesis of CRC.[29]

Glycosylated acute phase proteins undergo dynamic changes in concentration in response to systemic tissue injury and may be exploited as tumor markers.[30] Acute phase proteins are relevant to many key biological processes including cell adhesion, molecular trafficking and clearance, signal transduction, modulation of the innate immune system and inflammation.[31–33] Prior research has shown that GlycA is associated with cardiometabolic diseases[34, 35] and autoimmune diseases.[36] The commonality of these conditions is that they are driven by inflammation.

From the perspective of CRC, prior work has demonstrated that acute phase proteins may provide additional information when combined with CEA. Ward et al. reported that rises in GlycA acute phase proteins, α 1-antitrypsin, α 1-acid glycoprotein, and haptoglobin, of postoperative CRC patients were associated with metastases or recurrent cancer;[37] in healthy individuals, α 1-antitrypsin, haptoglobin, and α 1-acid glycoprotein profiles were stable over time.[37] Furthermore, a model that included preoperative α 1-antitrypsin, and α 1-acid glycoprotein blood levels considerably improved the predictive value of the model attained from using CEA levels alone.[37] Additionally, serial measurements of several acute phase proteins strengthened the observed association between CEA and prognosis for monitoring postoperative CRC patients.[37] Our study is in agreement with a prior study of colorectal cancer at the time of surgery that observed no significant correlation between CRP, α 1-antitrypsin, CEA

and the stage of the disease, but significant correlations were observed between the α 1-acid glycoprotein (CA 19–9) and stage of the disease.[38]

Similar relationships with CRC were noted in a prior study examining human plasma N-glycans measured with a different technique (high-performance liquid chromatography).[17] These observations along with the chemical characteristics of GlycA suggest that an important component of the risk predicted by GlycA is related to systemic inflammation that is not completely measured by the other inflammatory biomarkers (hsCRP, fibrinogen, sICAM-1). As GlycA measures the N-acetyl glycan moieties on circulating blood glycoproteins commonly found on acute phase proteins, it may be identifying another aspect of risk related to inflammation. The correlation between GlycA and CRC risk factors such as smoking, BMI, physical activity, and red meat intake, highlight a role for modifiable lifestyle risk factors in the expression of protein glycans that produce the GlycA signal. In the WHS study population, no effect modification was observed for aspirin, NSAIDs, or vitamin E to suggest a possible intervention pathway for these agents on GlycA. Alternatively, GlycA may be reflecting alterations in the glycosylation pathway involved in the pathogenesis of CRC.

Strengths of our study include the long prospective follow-up (median 19 years in WHS and 11 years in MESA) of participants (27,495 in WHS and another 6,784 in MESA), well-characterized CRC pathology with standardized ascertainment of incident CRC and CRC mortality in WHS, detailed information about CRC risk factors, extensive biomarker phenotyping, and the use of independent derivation and validation cohorts. Limitations to our study interpretations exist. First, only baseline blood samples were available. Yet, a previous study with repeated measures of GlycA showed that GlycA may be elevated for over a decade.[24] Second, the observational nature of this study precludes our ability to identify mechanisms for the observed association of GlycA with increased risk of incident CRC and CRC mortality. Third, we did not have CEA measurements but a previous study of acute phase proteins and incident CRC did not show significant correlations between serum CEA, α 1-antitrypsin, and CRP levels with the stage of disease.[38] Fourth, GlycA is related to a number of inflammatory conditions,[35, 36] but the GlycA association with CRC was stronger than CRP or other inflammatory biomarkers in our study. Metabolic syndrome[35] and other inflammatory conditions[39] associated with elevated GlycA have been linked to CRC.[40] Finally, the lack of information on the frequency of colonoscopies may contribute to lead time bias. Furthermore, MESA did not exclude participants with pre-existing cancer or history of treatment for cancer.

Conclusions

In conclusion, we have identified a novel association between elevated baseline levels of GlycA, an NMR-measured biomarker of circulating N-linked glycoprotein acetyls on several acute phase proteins, and incident CRC and mortality. GlycA may be either a complementary biomarker of systemic inflammation or may represent risk related to alternate disease pathways. Future studies should evaluate the role of GlycA in conjunction with standard colon cancer screening tools. Additional studies are needed to explore the range of potential for GlycA in the prevention and prognostication of CRC.

Supporting Information

S1 File. Supplemental methods. Discovery Study Population, Laboratory Measurements, Ascertainment of CRC Cases and Death, Replication Cohort, Models for Statistical Analyses, Figures, and Tables.

Fig A in S1 File. Schematic example of tri-antennary N-acetyl linked glycan chain, with N-acetylglucosamine (GlcNAc) contributing to the GlycA signal (red box).

Fig B in S1 File. Cohort Diagrams for Women's Health Study and Multi-ethnic Study of Atherosclerosis

Table A in S1 File. Spearman correlation coefficients (r) between GlycA and acute phase reactants in WHS and MESA

Table B in S1 File. WHS colorectal cancer incidence and mortality by quartiles of baseline GlycA, hsCRP, sICAM-1, and fibrinogen

Table C in S1 File. Association of GlycA with incident colorectal cancer and colorectal cancer death after additionally adjusting for inflammatory biomarkers

Table D in S1 File. Baseline clinical and biochemical variables by GlycA tertile in MESA

Table E in S1 File. MESA colorectal cancer incidence and mortality by tertiles of GlycA. (DOCX)

Acknowledgments

We are indebted to the 27,524 participants in the WHS and the 6,796 participants in MESA for their dedicated and conscientious collaboration and to the staff of the studies for their diligent assistance.

Author Contributions

Conceptualization: PDC AOA DKT PRL IL JEB SM JEM JO WSP RJG LW DRJ DAD MAC PMR.

Data curation: CL MVM.

Formal analysis: PDC PRL AOA SM MVM CL.

Funding acquisition: PDC IL JEB SM JEM JO PMR MAC.

Investigation: PDC PRL AOA SM MVM CL JEM PMR IL JEB.

Methodology: PDC PRL AOA SM MVM CL PMR DAD WSP DRJ.

Project administration: PDC SM JEB MVM JEM.

Resources: JO MAC JEB JEM.

Supervision: PDC SM AOA JEB.

Validation: PDC MVM CL DAD DRJ WSP SM.

Visualization: PDC SM AOA MVM CL.

Writing – original draft: PDC SM AOA PRL.

Writing – review & editing: PDC AOA DKT PRL CL MVM LW DAD DRJ RJG JO MAC WSP PMR JEM JEB IL SM.

References

1. Solakidi S, Dessypris A, Stathopoulos GP, Androulakis G, Sekeris CE. Tumour-associated trypsin inhibitor, carcinoembryonic antigen and acute-phase reactant proteins CRP and alpha1-antitrypsin in patients with gastrointestinal malignancies. *Clinical biochemistry*. 2004; 37(1):56–60. PMID: [14675563](#).
2. Wahl LM, Kleinman HK. Tumor-associated macrophages as targets for cancer therapy. *Journal of the National Cancer Institute*. 1998; 90(21):1583–4. PMID: [9811301](#).
3. Cicatiello V, Apicella I, Tudisco L, Tarallo V, Formisano L, Sandomenico A, et al. Powerful anti-tumor and anti-angiogenic activity of a new anti-vascular endothelial growth factor receptor 1 peptide in

- colorectal cancer models. *Oncotarget*. 2015; 6(12):10563–76. PMID: [25868854](#); PubMed Central PMCID: [PMC4496375](#). doi: [10.18632/oncotarget.3384](#)
4. Abu-Remaih M, Bender S, Raddatz G, Ansari I, Cohen D, Gutekunst J, et al. Chronic inflammation induces a novel epigenetic program that is conserved in intestinal adenomas and in colorectal cancer. *Cancer research*. 2015; 75(10):2120–30. doi: [10.1158/0008-5472.CAN-14-3295](#) PMID: [25808873](#).
 5. Otvos JD, Shalurova I, Wolak-Dinsmore J, Connelly MA, Mackey RH, Stein JH, et al. GlycA: A Composite Nuclear Magnetic Resonance Biomarker of Systemic Inflammation. *Clinical chemistry*. 2015; 61(5):714–23. doi: [10.1373/clinchem.2014.232918](#) PMID: [25779987](#).
 6. Xu L, Zhao Q, Huang S, Li S, Wang J, Li Q. Serum C-reactive protein acted as a prognostic biomarker for overall survival in metastatic prostate cancer patients. *Tumour biology: the journal of the International Society for Oncodevelopmental Biology and Medicine*. 2015; 36(2):669–73. doi: [10.1007/s13277-014-2670-x](#) PMID: [25286759](#).
 7. Durdey P, Williams NS, Brown DA. Serum carcinoembryonic antigen and acute phase reactant proteins in the pre-operative detection of fixation of colorectal tumours. *Br J Surg*. 1984; 71(11):881–4. PMID: [6498459](#).
 8. Muller T, Marshall RJ, Cooper EH, Watson DA, Walker DA, Mearns AJ. The role of serum tumour markers to aid the selection of lung cancer patients for surgery and the assessment of prognosis. *European journal of cancer & clinical oncology*. 1985; 21(12):1461–6. PMID: [3830727](#).
 9. Stamatiadis AP, St Toumanidou M, Vyssoulis GP, Manouras AJ, Apostolidis NS. Value of serum acute-phase reactant proteins and carcinoembryonic antigen in the preoperative staging of colorectal cancer. A multivariate analysis. *Cancer*. 1990; 65(9):2055–7. PMID: [1695546](#).
 10. Zhang SM, Buring JE, Lee IM, Cook NR, Ridker PM. C-reactive protein levels are not associated with increased risk for colorectal cancer in women. *Ann Intern Med*. 2005; 142(6):425–32. PMID: [15767620](#).
 11. Erlinger TP, Platz EA, Rifai N, Helzlsouer KJ. C-reactive protein and the risk of incident colorectal cancer. *JAMA*. 2004; 291(5):585–90. doi: [10.1001/jama.291.5.585](#) PMID: [14762037](#).
 12. Zhou B, Shu B, Yang J, Liu J, Xi T, Xing Y. C-reactive protein, interleukin-6 and the risk of colorectal cancer: a meta-analysis. *Cancer Causes Control*. 2014; 25(10):1397–405. doi: [10.1007/s10552-014-0445-8](#) PMID: [25053407](#).
 13. Duffy MJ, van Dalen A, Haglund C, Hansson L, Holinski-Feder E, Klapdor R, et al. Tumour markers in colorectal cancer: European Group on Tumour Markers (EGTM) guidelines for clinical use. *European journal of cancer*. 2007; 43(9):1348–60. doi: [10.1016/j.ejca.2007.03.021](#) PMID: [17512720](#).
 14. Locker GY, Hamilton S, Harris J, Jessup JM, Kemeny N, Macdonald JS, et al. ASCO 2006 update of recommendations for the use of tumor markers in gastrointestinal cancer. *Journal of clinical oncology: official journal of the American Society of Clinical Oncology*. 2006; 24(33):5313–27. doi: [10.1200/JCO.2006.08.2644](#) PMID: [17060676](#).
 15. Bullen BR, Cooper EH, Turner R, Neville AM, Giles GR, Hall R. Cancer markers in patients receiving chemotherapy for colorectal cancer: a preliminary report. *Medical and pediatric oncology*. 1977; 3(3):289–300. PMID: [34085](#).
 16. Duffy MJ. Carcinoembryonic antigen as a marker for colorectal cancer: is it clinically useful? *Clinical chemistry*. 2001; 47(4):624–30. PMID: [11274010](#).
 17. Nicastrì A, Gaspari M, Sacco R, Elia L, Gabriele C, Romano R, et al. N-glycoprotein analysis discovers new up-regulated glycoproteins in colorectal cancer tissue. *Journal of proteome research*. 2014; 13(11):4932–41. doi: [10.1021/pr500647y](#) PMID: [25247386](#).
 18. Kristic J, Vuckovic F, Menni C, Klaric L, Keser T, Beceheli I, et al. Glycans are a novel biomarker of chronological and biological ages. *The journals of gerontology Series A, Biological sciences and medical sciences*. 2014; 69(7):779–89. doi: [10.1093/gerona/git190](#) PMID: [24325898](#); PubMed Central PMCID: [PMC4049143](#).
 19. Gornik O, Lauc G. Glycosylation of serum proteins in inflammatory diseases. *Disease markers*. 2008; 25(4–5):267–78. PMID: [19126970](#); PubMed Central PMCID: [PMC3827815](#). doi: [10.1155/2008/493289](#)
 20. Cook NR, Lee IM, Gaziano JM, Gordon D, Ridker PM, Manson JE, et al. Low-dose aspirin in the primary prevention of cancer: the Women’s Health Study: a randomized controlled trial. *JAMA*. 2005; 294(1):47–55. doi: [10.1001/jama.294.1.47](#) PMID: [15998890](#).
 21. Lee IM, Cook NR, Gaziano JM, Gordon D, Ridker PM, Manson JE, et al. Vitamin E in the primary prevention of cardiovascular disease and cancer: the Women’s Health Study: a randomized controlled trial. *Jama*. 2005; 294(1):56–65. doi: [10.1001/jama.294.1.56](#) PMID: [15998891](#).
 22. Bild DE, Bluemke DA, Burke GL, Detrano R, Diez Roux AV, Folsom AR, et al. Multi-Ethnic Study of Atherosclerosis: objectives and design. *Am J Epidemiol*. 2002; 156(9):871–81. PMID: [12397006](#).

23. Sarrats A, Saldova R, Pla E, Fort E, Harvey DJ, Struwe WB, et al. Glycosylation of liver acute-phase proteins in pancreatic cancer and chronic pancreatitis. *Proteomics Clinical applications*. 2010; 4(4):432–48. doi: [10.1002/prca.200900150](https://doi.org/10.1002/prca.200900150) PMID: [21137062](https://pubmed.ncbi.nlm.nih.gov/21137062/).
24. Ritchie S W P, Nath A, Abraham G. The Biomarker GlycA Is Associated with Chronic Inflammation and Predicts Long-Term Risk of Severe Infection. *Cell Systems*. 2015; 1(4):293–301. <http://dx.doi.org/10.1016/j.cels.2015.09.007>. doi: [10.1016/j.cels.2015.09.007](https://doi.org/10.1016/j.cels.2015.09.007) PMID: [27136058](https://pubmed.ncbi.nlm.nih.gov/27136058/)
25. Baxter NN, Goldwasser MA, Paszat LF, Saskin R, Urbach DR, Rabeneck L. Association of colonoscopy and death from colorectal cancer. *Ann Intern Med*. 2009; 150(1):1–8. PMID: [19075198](https://pubmed.ncbi.nlm.nih.gov/19075198/).
26. Chen CH, Wang SH, Liu CH, Wu YL, Wang WJ, Huang J, et al. beta-1,4-Galactosyltransferase III suppresses beta1 integrin-mediated invasive phenotypes and negatively correlates with metastasis in colorectal cancer. *Carcinogenesis*. 2014; 35(6):1258–66. doi: [10.1093/carcin/bgu007](https://doi.org/10.1093/carcin/bgu007) PMID: [24403309](https://pubmed.ncbi.nlm.nih.gov/24403309/).
27. Brenner DR, Scherer D, Muir K, Schildkraut J, Boffetta P, Spitz MR, et al. A review of the application of inflammatory biomarkers in epidemiologic cancer research. *Cancer epidemiology, biomarkers & prevention: a publication of the American Association for Cancer Research, cosponsored by the American Society of Preventive Oncology*. 2014; 23(9):1729–51. doi: [10.1158/1055-9965.EPI-14-0064](https://doi.org/10.1158/1055-9965.EPI-14-0064) PMID: [24962838](https://pubmed.ncbi.nlm.nih.gov/24962838/); PubMed Central PMCID: [PMC4155060](https://pubmed.ncbi.nlm.nih.gov/PMC4155060/).
28. Emerging Risk Factors C, Kaptoge S, Di Angelantonio E, Lowe G, Pepys MB, Thompson SG, et al. C-reactive protein concentration and risk of coronary heart disease, stroke, and mortality: an individual participant meta-analysis. *Lancet*. 2010; 375(9709):132–40. doi: [10.1016/S0140-6736\(09\)61717-7](https://doi.org/10.1016/S0140-6736(09)61717-7) PMID: [20031199](https://pubmed.ncbi.nlm.nih.gov/20031199/); PubMed Central PMCID: [PMC3162187](https://pubmed.ncbi.nlm.nih.gov/PMC3162187/).
29. Arnold JN, Saldova R, Hamid UM, Rudd PM. Evaluation of the serum N-linked glycome for the diagnosis of cancer and chronic inflammation. *Proteomics*. 2008; 8(16):3284–93. doi: [10.1002/pmic.200800163](https://doi.org/10.1002/pmic.200800163) PMID: [18646009](https://pubmed.ncbi.nlm.nih.gov/18646009/).
30. Hakomori S. Glycosylation defining cancer malignancy: new wine in an old bottle. *Proceedings of the National Academy of Sciences of the United States of America*. 2002; 99(16):10231–3. doi: [10.1073/pnas.172380699](https://doi.org/10.1073/pnas.172380699) PMID: [12149519](https://pubmed.ncbi.nlm.nih.gov/12149519/); PubMed Central PMCID: [PMC124893](https://pubmed.ncbi.nlm.nih.gov/PMC124893/).
31. van Kooyk Y, Rabinovich GA. Protein-glycan interactions in the control of innate and adaptive immune responses. *Nature immunology*. 2008; 9(6):593–601. doi: [10.1038/ni.f.203](https://doi.org/10.1038/ni.f.203) PMID: [18490910](https://pubmed.ncbi.nlm.nih.gov/18490910/).
32. Arnold JN, Wormald MR, Sim RB, Rudd PM, Dwek RA. The impact of glycosylation on the biological function and structure of human immunoglobulins. *Annual review of immunology*. 2007; 25:21–50. doi: [10.1146/annurev.immunol.25.022106.141702](https://doi.org/10.1146/annurev.immunol.25.022106.141702) PMID: [17029568](https://pubmed.ncbi.nlm.nih.gov/17029568/).
33. Ohtsubo K, Marth JD. Glycosylation in cellular mechanisms of health and disease. *Cell*. 2006; 126(5):855–67. doi: [10.1016/j.cell.2006.08.019](https://doi.org/10.1016/j.cell.2006.08.019) PMID: [16959566](https://pubmed.ncbi.nlm.nih.gov/16959566/).
34. Akinkuolie AO, Buring JE, Ridker PM, Mora S. A novel protein glycan biomarker and future cardiovascular disease events. *Journal of the American Heart Association*. 2014; 3(5):e001221. doi: [10.1161/JAHA.114.001221](https://doi.org/10.1161/JAHA.114.001221) PMID: [25249300](https://pubmed.ncbi.nlm.nih.gov/25249300/); PubMed Central PMCID: [PMC4323825](https://pubmed.ncbi.nlm.nih.gov/PMC4323825/).
35. Gruppen EG, Connelly MA, Otvos JD, Bakker SJ, Dullaart RP. A novel protein glycan biomarker and LCAT activity in metabolic syndrome. *Eur J Clin Invest*. 2015; 45(8):850–9. doi: [10.1111/eci.12481](https://doi.org/10.1111/eci.12481) PMID: [26081900](https://pubmed.ncbi.nlm.nih.gov/26081900/).
36. Chung CP, Ormseth MJ, Connelly MA, Oeser A, Solus JF, Otvos JD, et al. GlycA, a novel marker of inflammation, is elevated in systemic lupus erythematosus. *Lupus*. 2016; 25(3):296–300. doi: [10.1177/0961203315617842](https://doi.org/10.1177/0961203315617842) PMID: [26637290](https://pubmed.ncbi.nlm.nih.gov/26637290/); PubMed Central PMCID: [PMC4767584](https://pubmed.ncbi.nlm.nih.gov/PMC4767584/).
37. Ward AM, Cooper EH, Turner R, Anderson JA, Neville AM. Acute-phase reactant protein profiles: an aid to monitoring large bowel cancer by CEA and serum enzymes. *British journal of cancer*. 1977; 35(2):170–8. PMID: [13805](https://pubmed.ncbi.nlm.nih.gov/13805/); PubMed Central PMCID: [PMC2025326](https://pubmed.ncbi.nlm.nih.gov/PMC2025326/).
38. Yuceyar S, Erturk S, Dirican A, Cengiz A, Saner H. The role of acute-phase reactant proteins, carcinoembryonic antigen and CA 19–9 as a marker in the preoperative staging of colorectal cancer: a prospective clinical study. *International surgery*. 1996; 81(2):136–9. PMID: [8912078](https://pubmed.ncbi.nlm.nih.gov/8912078/).
39. Bernatsky S, Boivin JF, Joseph L, St Pierre Y, Moore A, Rajan R, et al. Prevalence of factors influencing cancer risk in women with lupus: social habits, reproductive issues, and obesity. *J Rheumatol*. 2002; 29(12):2551–4. PMID: [12465150](https://pubmed.ncbi.nlm.nih.gov/12465150/).
40. Chan AO, Jim MH, Lam KF, Morris JS, Siu DC, Tong T, et al. Prevalence of colorectal neoplasm among patients with newly diagnosed coronary artery disease. *JAMA*. 2007; 298(12):1412–9. doi: [10.1001/jama.298.12.1412](https://doi.org/10.1001/jama.298.12.1412) PMID: [17895457](https://pubmed.ncbi.nlm.nih.gov/17895457/).