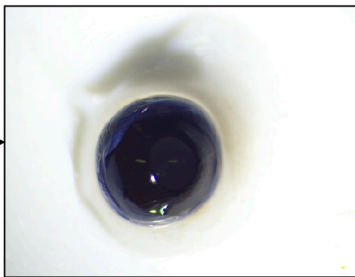
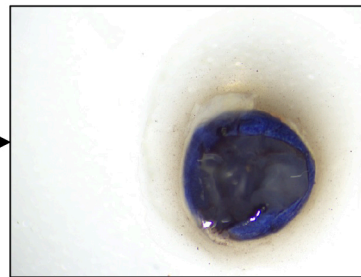


Eye enucleated



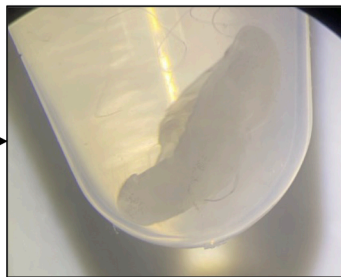
Cornea dissected



Lens and iris removed



RPE-choroid-sclera and
neuro-retina separated



Neuro-retina without
residual pigment

Supplementary Figure 1. Procedures of retina collection.

The eyes were enucleated and washed with PBS. Cornea was dissected along with limbus before removing lens and iris. Then neuro-retina was separated from RPE-choroid-sclera and washed with PBS to remove residual pigment.