



OPEN ACCESS

Isolated tricuspid regurgitation: outcomes and therapeutic interventions

Erin A Fender,¹ Chad J Zack,^{1,2} Rick A Nishimura¹

► Additional material is published online only. To view please visit the journal online (<http://dx.doi.org/10.1136/heartjnl-2017-311586>).

¹Department of Cardiovascular Disease, Mayo Clinic, Rochester, Minnesota, USA

²Division of Cardiology, Duke University, Durham, NC, USA

Correspondence to

Dr Rick A Nishimura, Mayo Clinic; nishimura@mayo.edu

Received 1 June 2017

Revised 2 November 2017

Accepted 15 November 2017

Published Online First

11 December 2017

ABSTRACT

Isolated tricuspid regurgitation (TR) can be caused by primary valvular abnormalities such as flail leaflet or secondary annular dilation as is seen in atrial fibrillation, pulmonary hypertension and left heart disease. There is an increasing recognition of a subgroup of patients with isolated TR in the absence of other associated cardiac abnormalities. Left untreated isolated TR significantly worsens survival. Stand-alone surgery for isolated TR is rarely performed due to an average operative mortality of 8%–10% and a paucity of data demonstrating improved survival. When surgery is performed, valve repair may be preferred over replacement; however, there is a risk of significant recurrent regurgitation after repair. Existing society guidelines do not fully address the management of isolated TR. We propose that patients at low operative risk with symptomatic severe isolated TR and no reversible cause undergo surgery prior to the onset of right ventricular dysfunction and end-organ damage. For patients at increased surgical risk novel percutaneous interventions may offer an alternative treatment but further research is needed. Significant knowledge gaps remain and future research is needed to define operative outcomes and provide comparative data for medical and surgical therapy.

INTRODUCTION

More than 1.6 million Americans have at least moderate to severe tricuspid regurgitation (TR), yet fewer than 8000 tricuspid valve (TV) operations are performed annually in the USA.^{1–3} The aetiology of TR is divided into primary and secondary causes. Historically, primary TR was thought to be limited to patients with congenital heart disease and rarely observed in adults. Secondary TR is associated with pulmonary hypertension (PH), left-sided valvulopathy or myocardial disease. However, there is an emerging population of adult patients without left-sided heart disease, PH or congenital abnormalities who nonetheless develop symptomatic isolated TR.

The incidence of isolated TR appears to be rising along with the prevalence of atrial fibrillation (AF) and intracardiac devices.^{4–6} This has prompted interest in corrective therapies; however, existing guidelines do not fully address management. In this article, we examine the natural history, presentation and evaluation of isolated TR. Next, we review surgical guidelines, evaluate postoperative outcomes and propose a management algorithm for isolated disease. Finally, we discuss percutaneous devices and address areas for future research.

AETIOLOGY AND PATHOPHYSIOLOGY

Primary valvular disease accounts for 10% of cases of TR in adults. Patients with congenital disease

may have primary TV disease such as in Ebstein's anomaly, atrioventricular defects and myxomatous prolapse. Acquired primary conditions include endocarditis, rheumatic disease, carcinoid or flail leaflet caused by trauma. There is an increasing population of patients with isolated primary TR caused by endomyocardial biopsy or intracardiac leads.^{7–9} Intracardiac leads can perforate or adhere to leaflets, entangle the chordal apparatus or impinge leaflets. In a series of patients undergoing de novo device implantation, the development of $\geq 2+$ TR was reported in 38% of patients.⁹

Secondary TR results from annular dilation and leaflet tethering leading to malcoaptation (figure 1, online supplementary video 1). Secondary TR commonly develops in response to right ventricular (RV) remodelling due to PH, which is the final common pathway of both intrinsic pulmonary vascular disease and left-sided myocardial or valvular disease. The resultant pressure overload causes ventricular enlargement, papillary muscle displacement, leaflet tethering, and annular flattening and dilation (figure 2). A similar pattern of secondary TR occurs in diseases of the myocardium where RV dilation is the dominant mechanism, such as with dilated cardiomyopathies, RV infarction and arrhythmogenic RV dysplasia. Chronic volume overload of the RV can also cause secondary TR, as it occurs with intracardiac shunts or high-output states. In about 10% of secondary TR no cause of the regurgitation can be identified, which has been termed 'idiopathic' TR.^{5,8} Patients with idiopathic disease tend to be older with a high prevalence of AF.^{8,10} Echocardiographic studies of idiopathic TR in patients with AF have identified extreme annular dilation as the driving mechanism, suggesting AF may be a cause rather than a consequence of the TR.¹⁰ Figure 3 outlines the aetiologies of primary and secondary TR. We discuss herein isolated TR in the absence of other aetiological factors.

PRESENTATION AND EVALUATION

The presentation of isolated TR is characterised by the physical finding of an elevated venous pressure with systolic pulsatility indicating a high right atrial (RA) pressure and large C-V wave. This is followed by development of right heart failure (neck fullness, hepatomegaly, oedema and ascites) and low cardiac output (fatigue). Exertional dyspnoea results from enhanced ventricular interaction with the dilated RV causing poor effective operative compliance of the left ventricle (LV).¹¹ Hepatic and renal failure results from venous congestion and low perfusion pressure.^{12,13} Patients with isolated severe TR will present with right heart failure despite normal LV



To cite: Fender EA, Zack CJ, Nishimura RA. *Heart* 2018;**104**:798–806.

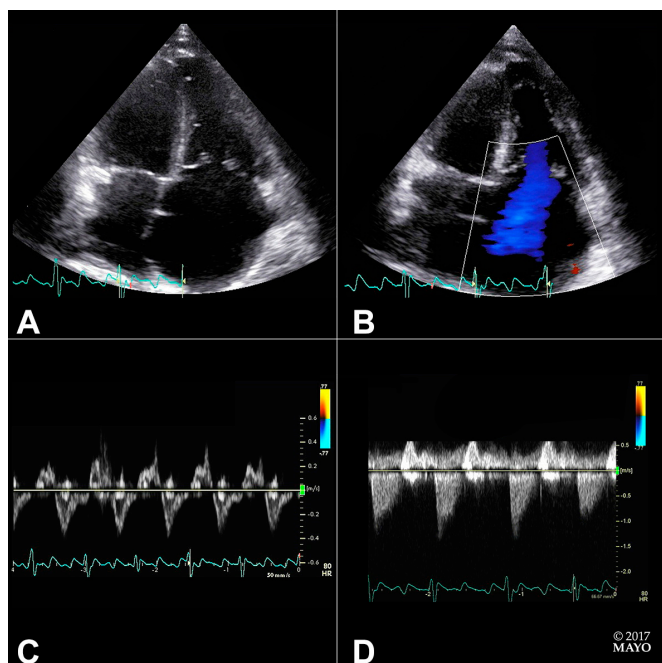


Figure 1 (Online video): Echocardiographic evaluation of severe tricuspid regurgitation. Panel (A) demonstrates right ventricular and atrial enlargement with subsequent leaflet malcoaptation. Panel (B) shows a broad-based regurgitant jet across the tricuspid valve by colour-flow Doppler. Panel (C) highlights the classic ‘dagger-shaped’ continuous wave Doppler pattern of the regurgitant jet which results from rapid pressure equalisation in the right atria and ventricle. Panel (D) demonstrates the continuous wave Doppler pattern of systolic reversals observed in the hepatic veins.

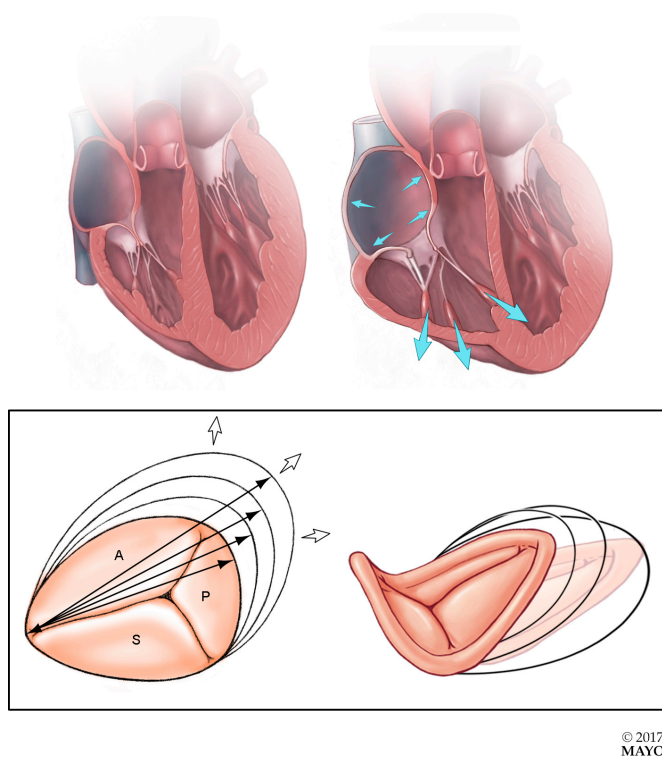


Figure 2 Secondary tricuspid regurgitation is typically mediated by right ventricular and annular dilation with resultant flattening of the normal ‘saddle-shaped’ configuration of the tricuspid valve.

systolic function, left-sided valves and pulmonary pressures. Similar findings occur in constrictive pericarditis and restrictive cardiomyopathy, which must be considered in the differential diagnosis. A history of long-standing AF or a prior intracardiac device should raise the suspicion of severe isolated TR.

ECHOCARDIOGRAPHIC ASSESSMENT

A comprehensive two-dimensional and Doppler echocardiogram should be performed in all patients in whom severe TR is suspected to confirm the diagnosis of severe TR as well as elucidate its aetiology. The morphology of the TV, annular size, and RV size and function should be assessed. The echocardiographic criteria for severe TR include a central jet area $>10\text{ cm}^2$, proximal isovelocity surface area $>0.9\text{ cm}^2$, vena contracta diameter $>0.7\text{ cm}$, effective regurgitant orifice area $\geq 40\text{ mm}^2$ and regurgitant volume $\geq 45\text{ mL}$.^{14 15} Additional criteria include a dense TR continuous wave Doppler signal with a ‘dagger-shape’ due to rapid pressure equalisation between the RA and RV, a dilated inferior vena cava and systolic reversals in the hepatic veins (figures 1 and 4). It may be difficult to determine the mechanism of TR, particularly if device leads cause acoustic shadowing.¹⁶ Three-dimensional views can elucidate the relationship between the valve and device leads, localise prolapse or flail and aid in measurement of annular dimensions.^{10 16 17}

NATURAL HISTORY

The clinical impact of TR was first established in patients with significant left-sided heart disease where the presence of TR worsened survival.¹⁸ The importance of isolated TR was first described in 2004.⁴ In a cohort study of 5223 patients, the presence of severe TR was associated with decreased survival after adjustment for PH and ejection fraction (HR 1.31, 95% CI 1.05 to 1.66). In a series of 60 patients with isolated flail, an excess mortality of 3.8% per year was observed ($P=0.02$).¹⁹ In an observational study of patients with new TR following cardiac device implantation, $\geq 2+$ TR was independently associated with all-cause mortality (HR 1.75, 95% CI 1.01 to 3.02, $P=0.047$).⁹ Similarly, a 2014 study of 68 subjects with isolated severe secondary TR demonstrated worse long-term survival (HR 2.67, 95% CI 1.66 to 4.23).⁵ These series indicate that even in the absence of significant cardiopulmonary comorbidities, isolated TR adversely impacts survival.

CURRENT GUIDELINE RECOMMENDATIONS FOR TREATMENT

Most patients with symptomatic TR are managed with therapies targeted towards the underlying disease process and diuretics to address volume overload.²⁰ While diuretics may temporise symptoms, it is unclear if they alter disease progression, particularly in patients with primary valve disease. Therefore, TV surgery is the definitive therapy for severe symptoms. Current guidelines for surgery are reviewed in table 1.^{20 21} Most recommendations are targeted at patients undergoing concomitant aortic or mitral operations. These recommendations are based on the findings that the size and configuration of the TV will not reliably return to baseline after relief of RV overload.²⁰ Furthermore, reoperation for isolated TR after previous sternotomy is associated with significant in-hospital mortality.²² There is a paucity of recommendations for surgery in patients with isolated TR. Existing recommendations are based on limited data in young otherwise healthy patients with primary TV flail.¹⁹ However, patients with flail are fundamentally different from those with isolated TR due to a device lead or idiopathic secondary TR associated with AF. These latter patients tend to be older with more comorbidities.

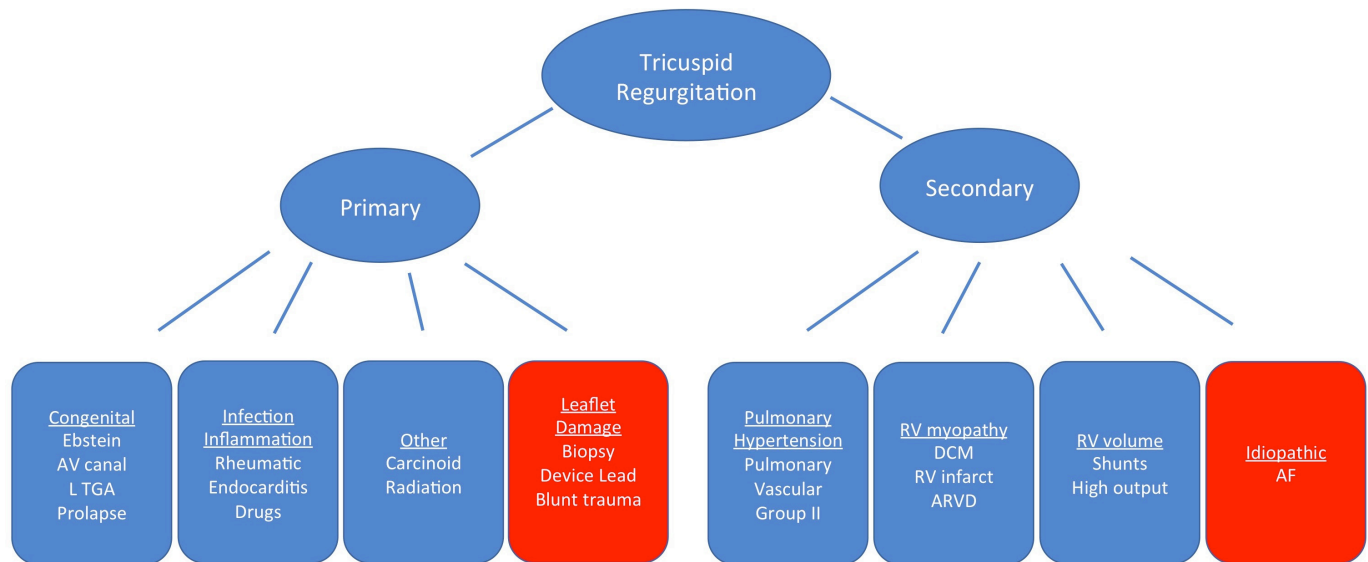


Figure 3 The aetiology of tricuspid regurgitation can be divided according to the presence or absence of organic valvular disease. Patients with isolated primary or secondary tricuspid regurgitation (highlighted in the red boxes) represent an emerging patient population about whom little is known. AF, atrial fibrillation; ARVD, arrhythmogenic right ventricular dysplasia; AV, aortic valve; DCM, dilated cardiomyopathy; L TGA, L-transposition of the great arteries; RV, right ventricle.

Due to a lack of outcomes literature, the management of isolated TR is not directly addressed by current guidelines.

TECHNIQUES AND OUTCOMES OF TV SURGERY

The selection of a valve repair versus replacement is largely driven by anatomic factors, including the extent of leaflet

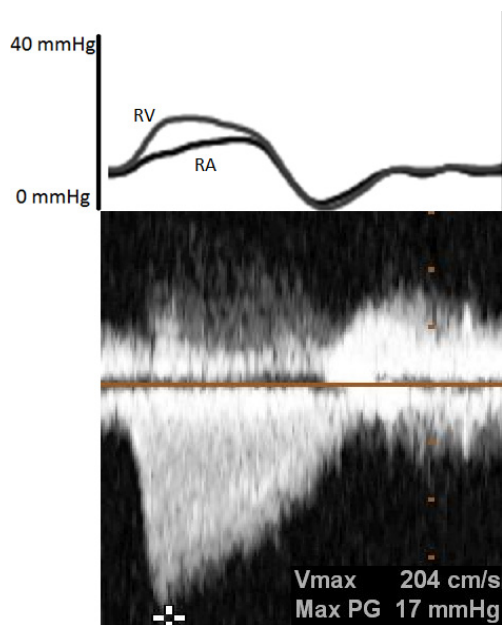


Figure 4 Simultaneous measurement of the tricuspid regurgitation jet by continuous wave Doppler and haemodynamic catheterisation demonstrates several key findings. Severe regurgitation results in rapid pressure equalisation between the right ventricle and right atrium giving the continuous wave Doppler signal a 'dagger-shaped' appearance. Additionally, the peak regurgitant velocity is low, which excludes significant pulmonary hypertension as a cause of the regurgitation. The haemodynamic tracing is notable for ventricularisation of the right atrial tracing, and marked elevation of the right atrial pressure with a large C-V wave. RA, right atrium; RV, right ventricle; PG, pressure gradient.

damage and degree of annular dilation. When feasible, valve repair may be preferred due to the risks of prosthetic valve thrombosis, bioprosthetic valve degeneration and long term anticoagulation.^{23 24} Repair is generally favoured in patients undergoing left-sided surgery as these techniques can be accomplished quickly to minimise bypass time.^{20 25} It is estimated that 73% of TV operations are repairs, with 88% performed at the time of left-sided valve surgery.¹ The most common surgical techniques are reviewed in figure 5.

Recurrent $\geq 3+$ TR in the months following repair occurs in 3%–14% of patients with the incidence steadily increasing over time and affecting up to 20% of patients by 5 years.^{22 26 27} This risk appears to be lower in patients treated with a rigid annuloplasty band. Reoperation for recurrent TR is unusual, but is associated with up to 37% in-hospital mortality.^{22 28} Risk factors for recurrence include baseline regurgitant severity, PH, LV dysfunction, RV device leads, leaflet tenting and degree of annular dilation.^{22 29 30}

In patients with extreme annular dilation, previous failed TV repair or leaflet abnormalities, tricuspid valve replacement (TVR) may be required.^{25 31} Operative mortality in TVR is often reported to be higher than repair; however, this may be confounded by a greater number of comorbidities in this population. In a propensity score-matched study of 68 pairs of patients (approximately half of whom underwent isolated surgery), no differences were observed in surgical mortality after matching (13% for TVR vs 18% for repair, $P=0.64$), suggesting when imbalances in comorbidities are adjusted for that operative mortality is similar.²⁴

The choice of bioprosthetic versus mechanical valves has generated much debate. Bioprosthetic valves in the tricuspid position may be more durable than bioprosthetics in the mitral position, perhaps due to lower pressures and velocities.³² Advantages to bioprostheses include a lower risk of valve thrombosis and avoidance of anticoagulation; however, there is up to a 7% risk of severe bioprosthetic degeneration at 7–8 years requiring stand-alone redo TVR.^{33 34} Conflicting data have been published on long-term outcomes, with survival being similar, worse or improved with a bioprosthesis versus a mechanical

Table 1 Summary of existing society guidelines for tricuspid valve surgery for tricuspid regurgitation

2012 European Society of Cardiology Recommendations ²¹	2014 American Heart Association/American College of Cardiology Recommendations ²⁰
Class I	
Severe primary or secondary TR at the time of left-sided valve surgery (level of evidence C)	Severe primary or secondary TR at the time of left-sided valve surgery (level of evidence C)
Symptomatic isolated severe primary TR without evidence of right ventricular dysfunction (level of evidence C)	
Class IIA	
Surgery may be appropriate for moderate primary TR in patients at the time of left-sided valve surgery (level of evidence C)	Surgery may be appropriate for severe primary TR in patients unresponsive to medical therapy (level of evidence C)
Surgery may be appropriate for mild or moderate secondary TR in patients with annular dilation (≥ 40 mm or >21 mm ²) at the time of left-sided valve surgery (level of evidence C)	Surgery may be appropriate for mild or moderate secondary TR at the time of left-sided valve surgery if there is (A) dilation of the tricuspid annulus or (B) the patient has a history of right heart failure (level of evidence B)
Surgery may be appropriate for asymptomatic or mildly symptomatic patients with severe isolated primary TR and evidence of progressive RV dilation or decreased RV function (level of evidence C)	
In patients with previous left-sided valve surgery; stand-alone tricuspid surgery may be appropriate for patients with severe secondary TR and either symptoms or evidence of right ventricular dilation or dysfunction, <i>in the absence of left-sided valve dysfunction, severe RV or LV dysfunction and severe pulmonary hypertension</i> (level of evidence C)	
Class IIB	
	Surgical tricuspid valve repair may be appropriate in patients with mild or moderate secondary TR and pulmonary hypertension at the time of left-sided valve surgery (level of evidence C)
	In patients with previous left-sided valve surgery; surgical repair or replacement may be appropriate in patients with symptomatic severe TR <i>in the absence of severe RV dysfunction or severe pulmonary hypertension</i> (level of evidence C)
	Surgery may be appropriate for patients with asymptomatic or minimally symptomatic severe primary who have evidence of at least moderate right ventricular dilation or dysfunction (level of evidence C)

LV, left ventricle; RV, right ventricle; TR, tricuspid regurgitation.

prosthesis.^{35–38} Overall, there is no definite survival benefit of a mechanical versus a bioprosthetic valve. The final choice should be a shared decision between the patient and the physician. However, in older patients the lower rate of structural

deterioration and possible future need for a pacemaker favour a bioprosthetic valve.

While surgery is the only definitive treatment for isolated TR, it is rarely performed. Of the 4000–8000 TV operations performed annually in the USA, roughly 80% are at the time of left valve surgery.^{1 2 26} Stand-alone surgery makes up only 20% of operations, and many surgeries are performed for indications such as endocarditis. The rarity of stand-alone surgery for isolated TR may result from concerns over in-hospital mortality (8%–10% in most series) and uncertainty surrounding long-term outcomes. Due to small sample size most studies span multiple decades and include patients undergoing left-sided heart surgery. This has resulted in widely variable estimations of in-hospital mortality with higher mortality associated with multivalvular surgery, advanced heart failure and redo sternotomy.^{1 19 22 38–44}

Few studies have focused on the outcomes of surgery for isolated TR and these typically include heterogeneous patient populations (table 2). Additionally, there is a lack of comparative outcomes for medically and surgically treated patients. To date, only a single study has compared long-term survival in patients with isolated TR treated with medical therapy versus surgery. In a series of 45 pairs of propensity score-matched patients (66% secondary TR, 33% primary TR) treated with stand-alone surgery, there was a non-significant trend towards improved survival in the surgical patients (HR 0.29, 95% CI 0.08 to 1.10, $P=0.07$).⁴¹

While there are little data on long-term postoperative survival, studies have consistently demonstrated surgery can improve

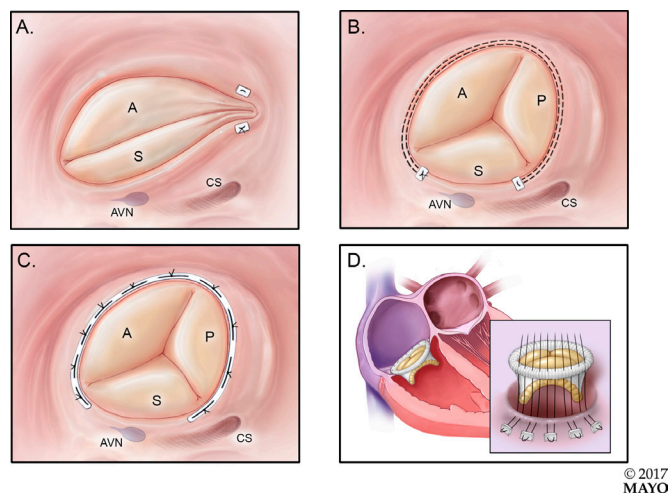


Figure 5 The most common tricuspid valve operations include the Kay bicuspidisation (A), DeVega suture annuloplasty (B), prosthetic annuloplasty band (C) and tricuspid valve replacement (D). AVN, atrioventricular node; CS, coronary sinus; A, anterior leaflet; P, posterior leaflet; S, septal leaflet.

Table 2 Isolated tricuspid valve surgery is rare and few studies have examined outcomes in this population. Studies are often heterogeneous, and include both primary and secondary tricuspid valve disease

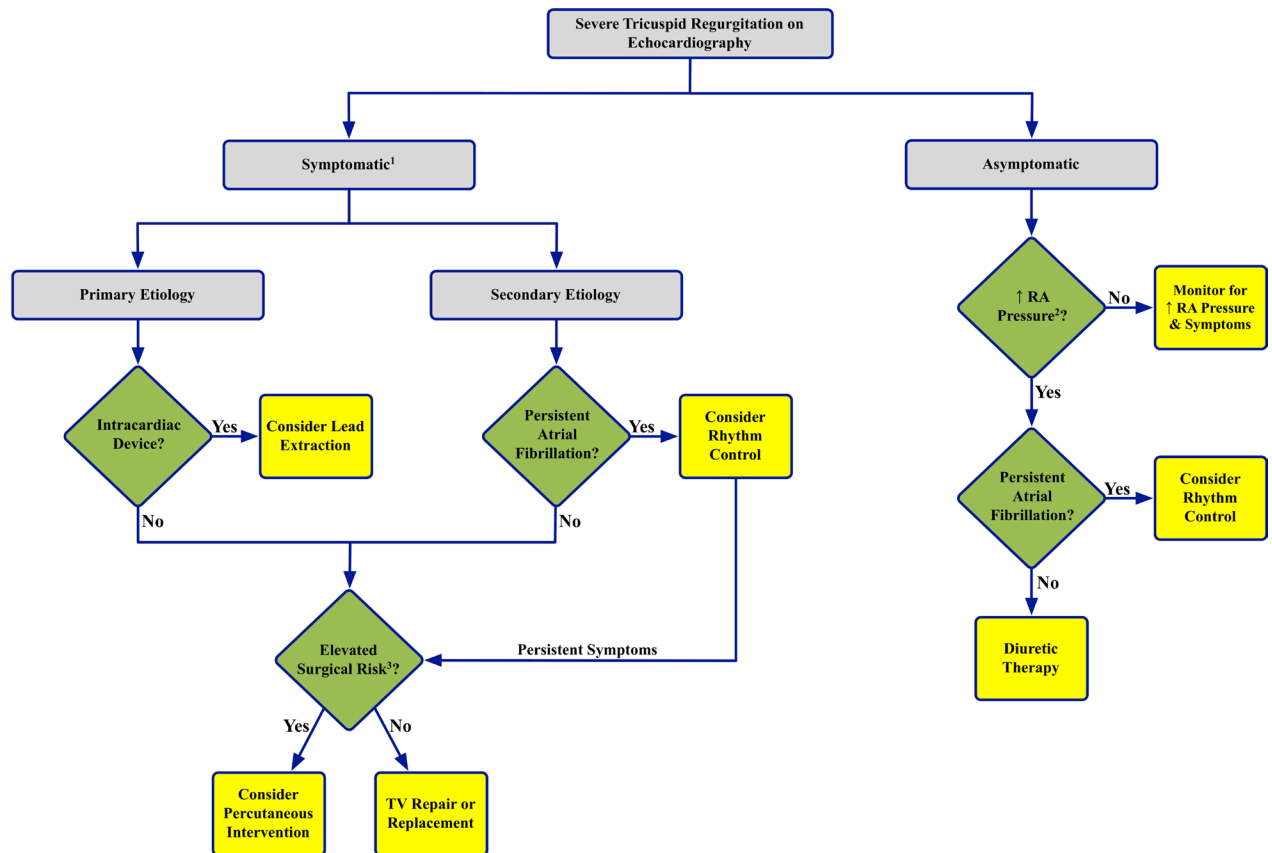
	Author, year	Study design	Study population	Outcomes	Comments and limitations
Isolated primary tricuspid regurgitation	Mangoni <i>et al.</i> , 2001 ³¹	Single-centre, retrospective cohort study from 1988 to 1996	15 patients with TV replacement for rheumatic disease (n=12), healed endocarditis (n=2) and sarcoidosis (n=1) Mean age: 61 years Bioprosthetic valve: 33% Mechanical valve: 67%	30-day mortality: 20% Median survival 1.2 years Short-term mortality highest in those with anasarca Long-term mortality highest in those with anaemia, rheumatic disease, previous stroke or previous mitral valve surgery	Included patients with tricuspid stenosis (n=1), regurgitation (n=8) and mixed stenosis and regurgitation (n=6) No comparison to medical therapy
	Attenhofer <i>et al.</i> , 2012 ⁴⁵	Single-centre, retrospective cohort study from 1980 to 2010	81 adult patients >50 years of age with severe TR due to Ebstein's anomaly Mean age: 59 years TV repair: 25% Bioprosthetic valve: 52% Mechanical valve: 23% Previous cardiac surgery: 16%	In-hospital mortality: 4% (all prior to 1995) At 84 months' follow-up, death occurred in 17% and improved NYHA functional class in 89%.	Included patients with Ebstein's anomaly only No comparison to medical therapy
	Messika-Zeitoun <i>et al.</i> , 2004 ⁴⁹	Single-centre, retrospective cohort from 1980 to 2000	60 patients with TV flail, of whom 33 underwent isolated surgery Mean age: 51 years TV repair: 82% Bioprosthetic valve: 12% Mechanical valve: 6%	In-hospital mortality: 3% (n=1) Symptomatic improvement in 88% of surgical patients	Long-term survival for surgical versus medical patients is not reported. Combined CABG or AVR performed in three patients
Isolated secondary tricuspid regurgitation	Kwon <i>et al.</i> , 2006 ⁴⁶	Single-centre, prospective cohort study from 2003 to 2005	18 patients with symptomatic secondary TR following previous mitral valve surgery Mean age: 58 years TV repair: 33% TV replacement: 67%	In-hospital mortality: 11% (n=2) Improved NYHA functional class or 25% increase in respiratory variation of the inferior vena cava in 56% of survivors (n=9) Adverse outcomes predicted by TV annular systolic velocity <9.5 cm/s	Outcome was a combined end-point of improved NYHA functional class or increased respiratory variation in the inferior vena cava. No comparison to medical therapy
Mixed population primary and secondary tricuspid regurgitation	Topilsky <i>et al.</i> , 2011 ³⁸	Single-centre, retrospective cohort study from 1997 to 2007	189 patients with TV replacement for symptomatic severe TR Mean age: 67.5 years Isolated TV surgery: 36% Secondary TR: 29% Combined MV or AV surgery: 46.5% Combined CABG: 26.5% Previous left-sided valve surgery: 46.5% Bioprosthetic replacement: 81.5% Mechanical replacement: 18.5%	Overall in-hospital mortality for all surgeries: 10% In-hospital mortality for isolated surgery: 6% At 29 months' follow-up, death occurred in 37% and heart failure admission in 21.7%. All-cause mortality was associated with increased Charlson comorbidity index score, shorter right index of myocardial performance and NYHA class IV symptoms.	46.5% of the study population had combined MV or AV surgery. Unclear how many isolated operations were performed for primary versus secondary TR No comparison to medical therapy Excluded TV repairs
	Kim <i>et al.</i> , 2009 ⁴⁰	Single-centre, prospective cohort study from 2003 to 2008	61 patients with symptomatic TR Mean age: 57 years Secondary TR: 84% Previous left-sided valve surgery: 93% TV repair: 13% Bioprosthetic replacement: 49% Mechanical replacement: 38%	In-hospital mortality 9.8% At 32 months' follow-up, cardiac death occurred in three patients and six had cardiac readmissions.	Unclear how many events occurred in patients with primary versus secondary TR No comparison to medical therapy
	Vassileva <i>et al.</i> , 2012 ¹	Multicentre claims data from the Nationwide Inpatient Sample from 1999 to 2008	5736 patients with isolated TV surgery TV replacement: 57%	In-hospital mortality for isolated TV surgery: 9%	Cause of tricuspid disease is not reported, unclear if stenosis, regurgitation, primary or secondary. No long-term outcome data

Continued

Table 2 Continued

Author, year	Study design	Study population	Outcomes	Comments and limitations
Pfannmüller <i>et al</i> , 2012 ⁴²	Single-centre, retrospective cohort from 2000 to 2011	48 patients with severe TR following previous left cardiac surgery treated with minimally invasive TV surgery Mean age: 63.8 years Secondary TR: 90% TV repair: 69% Bioprosthetic valve: 25% Mechanical: 6%	30-day mortality: 4.2% Early failure of TV repair: 12.5% Ring dehiscence: 9% (limited to semiflexible ring) 5-year survival 72% among those treated with elective surgery	No comparison to medical therapy
Lee <i>et al</i> , 2010 ⁴¹	Single-centre, retrospective cohort study from 1996 to 2005	57 patients with TV surgery Mean age: 55 years Secondary TR: 69% TV repair: 75.4% Of the 57 patients, 45 were propensity matched according to surgery or medical therapy.	Overall hospital mortality for isolated TV surgery: 8.8% 10-year survival tended to be higher in the surgical patients after propensity matching (HR 0.29, P=0.068).	This is the only study to directly compare outcomes of medical and surgical management. High prevalence of primary TR in surgical patients
Kim <i>et al</i> , 2013 ³⁹	Single-centre, retrospective cohort study from 1996 to 2010	51 patients with TV surgery Mean age: 55.8 years Secondary TR: 35% TV repair: 72.5% Bioprosthetic valve: 19.6% Mechanical valve: 7.8%	In-hospital mortality: 2.0% 5-year survival: 83.5% 5-year survival free of CHF, transplant or reoperation: 77.3% Event-free survival predicted by RV end-systolic dimension, preoperative haemoglobin, GFR and bilirubin	No comparison to medical therapy End-systolic dimension reported continuously, it is unclear if there is a threshold effect.
Staab <i>et al</i> , 1999 ⁴⁴	Single-centre, retrospective cohort study of patients with TR following previous left heart valve surgery treated from 1980 to 1997	34 patients with symptomatic TR and history of prior left-sided valve surgery Mean age: 62.8 years At least moderate organic TV disease seen at surgery: 41.2% TV repair: 21% Bioprosthetic valve: 38% Mechanical valve: 41%	In-hospital mortality: 8.8% Mean 5-year survival: 49% Among survivors, 85% experienced symptomatic improvement.	Unclear how many events occurred in patients with primary versus secondary TR No comparison to medical therapy

AV, aortic valve; AVR, aortic valve replacement; CABG, coronary artery bypass grafting; CHF, congestive heart failure; GFR, glomerular filtration rate; MV, mitral valve; NYHA, New York Heart Association; RV, right ventricle; TR, tricuspid regurgitation; TV, tricuspid valve.



¹ Diuretic therapy should be initiated for volume management in all symptomatic patients

² RA pressure assessed by physical exam (markedly elevated and pulsatile venous pressure), echocardiogram, or hemodynamic catheterization

³ Surgical risk determined by degree of RV dysfunction and comorbidities

Figure 6 Algorithm for the management of severe isolated tricuspid regurgitation. RA, right atrium; RV, right ventricle; TV, tricuspid valve.

symptoms.^{19 40 44–46} In a series of 33 patients with isolated TV flail, 88% of operative patients experienced symptomatic improvement.¹⁹ Similarly, a study of 34 patients with previous left-sided valve surgery undergoing stand-alone TV surgery demonstrated improved New York Heart Association functional class in 85% of operative patients, including 59% of whom had isolated secondary TR.⁴⁴

PREDICTORS OF OUTCOMES FOR TV SURGERY

Regardless of which series is examined, outcomes of TR surgery are worse than what is seen in mitral or aortic operations. Surgical mortality may be adversely impacted by the practice of delaying operative interventions, thereby allowing for the development of RV dysfunction and end-organ damage. For the aortic and mitral valves, the timing of surgical referral is based on an integration of symptoms, disease severity and early markers of LV dilation or dysfunction.²⁰ There are little data to base timing of surgery for patients with severe TR, particularly those with isolated disease.

Several studies have examined the relationship between RA pressure and RV function with outcomes in patients undergoing TR surgery. An analysis of 260 patients treated surgically for secondary TR (the majority of whom underwent combined left valve surgery) found RA pressure was independently associated with hospital death (HR 5.6, 95% CI 1.7 to 78.0, $P=0.01$), with a mortality rate of 28% for patients with a preoperative RA pressure ≥ 15 mm Hg versus just 5% in patients with a pressure < 15 mm Hg.⁴⁷ RV dysfunction represents an advanced stage of chronic TR. In patients undergoing stand-alone TR surgery, RV

end-systolic dimension, RV end-systolic area and the RV index of myocardial performance have all been associated with survival free of death, heart failure, cardiac readmissions, heart transplant or TV reoperation.^{5 39 40} These findings suggest RA pressure and RV function are key determinates of postoperative outcomes. As with all surgeries for valve disease, severe symptoms are associated with adverse short and long-term outcomes.

RECOMMENDATIONS FOR TREATMENT OF ISOLATED TR

Treatment of patients with severe isolated TR is based on several clinical observations:

1. 'Severe TR begets severe TR.' Progressive RV dysfunction drives further annular dilatation and results in more severe TR.
2. Diuretics may be effective in treating right heart failure in the early stages of isolated secondary TR and may potentially interrupt this cycle by lowering right atrial pressure.
3. Medical therapy will not reverse progressive RV dysfunction in severe isolated primary TR.
4. Isolated secondary TR associated with AF may improve with conversion to sinus rhythm.
5. Once severe right heart failure symptoms develop, if the TR remains untreated there is progressive clinical deterioration with development of end-stage liver and kidney failure.
6. Surgical intervention can improve the symptoms of right heart failure, but there are no data on enhanced survival in patients with isolated TR.

The current high mortality associated with surgery for isolated TR may be in part related to late surgical referral at which time

severe RV dysfunction and end-organ damage have already occurred.

Our recommendations for treatment of patient with severe isolated TR are shown in [figure 6](#).

In patients without right heart failure symptoms surgical intervention is not recommended. However, it is reasonable to try diuretics if RA pressure elevation is seen on examination as diuretics may interrupt the cycle of ‘severe TR begets severe TR.’ Conversion to sinus rhythm may decrease the severity of TR in patients with persistent AF.

It is those patients with severe isolated TR and right heart failure who should be considered for surgical intervention. For patients with severe primary TR (frequently associated with intracardiac leads), surgical intervention may be indicated as this represents a structural problem which diuretics will not address. There have been reports of successful treatment of TR with lead extraction.⁷ However, in most cases the exact mechanism of the device-induced TR is unclear, and lead extraction could further damage the valve. Our current approach is surgical repair or TVR with exteriorisation of the lead outside the valve ring. In patients with isolated secondary TR an attempt to reduce annular size with diuretics or conversion to sinus rhythm for those with persistent AF may be effective. If symptoms remain surgical intervention is recommended prior to the onset of severe RV dysfunction, hepatic or renal dysfunction. Whether surgery may be effective at an earlier stage prior to the onset of symptomatic right heart failure remains to be determined.

PERCUTANEOUS INTERVENTIONS

The rarity of surgery has created a large population in whom percutaneous treatments could provide a viable alternative. No large experience exists for these devices but early studies are under way. Devices fall into two categories: transcatheter valves and coaptation devices⁴⁸ ([figure 7](#)). Transcatheter valve replacement is usually performed within a previously placed bioprosthetic valve (‘valve-in-valve’), or as a stented valve implanted in the inferior vena cava and superior vena cava.^{48 49} Devices aimed at improving coaptation include off label use of the MitraClip (Abbot Vascular, Menlo Park, CA), a percutaneous annuloplasty system (TriAlign, Mitralign, Tewksbury, MA) and a spacer device (FORMA Edwards Lifesciences, Irvine, CA), which occupies the regurgitant orifice. The extent to which these devices result in a clinically meaningful improvement is not established and requires further research before these techniques can be adopted into clinical practice.

AREAS FOR FURTHER RESEARCH

Our understanding of the management of isolated secondary TR is lacking in three key areas: identification of patients for surgical intervention, isolated TR surgical outcomes in the contemporary era and comparative survival analyses for medical and surgical patients.

Preoperative RV size and function are associated with postoperative outcomes; however, threshold criteria for valve intervention are lacking.²⁰ Similar to what is seen in the LV with mitral regurgitation, severe TR may mask early RV dysfunction. Overt RV dysfunction represents an end-stage condition and the prognosis cannot be altered surgically. Therefore, identification of echocardiographic markers of early RV dysfunction are needed to guide surgical referral.

Similarly, our understanding of surgical outcomes in patients with isolated TR is limited. Most series contain a heterogeneous population treated over decades and therefore have

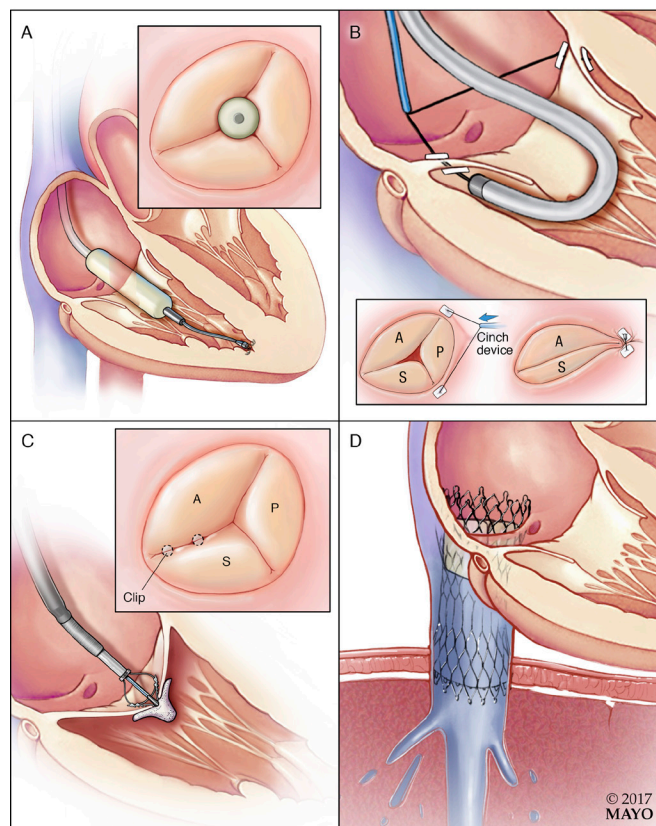


Figure 7 Multiple percutaneous devices are in development for the treatment of tricuspid regurgitation. Panel (A) is the FORMA device, a tricuspid spacer which occupies the regurgitant orifice and provides a surface against which coaptation can occur. Panel (B) demonstrates the TriAlign, which percutaneously reproduces a surgical Kay bicuspidisation. Panel (C) shows the MitraClip being used in the tricuspid position. Panel (D) demonstrates a stented caval valve implanted in the inferior vena cava.

limited generalisability. Surgical referral for isolated TR is often delayed until the onset of frank right heart failure with end-organ damage which then further increases perioperative mortality. Efforts to define operative risk for truly isolated disease are critical to aid in decision-making, and to act as a benchmark against which studies of early operation can be compared.

A final, but major, limitation of existing surgical data is the paucity of comparative outcomes. Upfront operative mortality is high. Therefore, establishing long-term survival relative to medical therapy is critical to understanding the risks and benefits of surgery. A randomised trial of early surgery for isolated TR would fill an important gap in the literature.

CONCLUSIONS

Isolated severe TR results in progressive right heart failure and adversely impacts survival. Surgery remains the only definitive treatment but is rarely performed. There are little data to guide management of isolated TR; however, surgery is reasonable in patients with right heart failure who are at low operative risk prior to the development of RV dysfunction and end-organ damage. Further research is needed to identify markers of disease progression and to aid in the optimal timing for surgical referral.

Contributors All authors have substantially contributed to the writing, research and design of this commissioned review. EAF and CJZ performed the literature review, writing of the manuscript, table and figure design. RAN contributed substantially to the design, writing, concept and structure of the manuscript.

Competing interests None declared.

Provenance and peer review Commissioned; externally peer reviewed.

Open Access This is an Open Access article distributed in accordance with the Creative Commons Attribution Non Commercial (CC BY-NC 4.0) license, which permits others to distribute, remix, adapt, build upon this work non-commercially, and license their derivative works on different terms, provided the original work is properly cited and the use is non-commercial. See: <http://creativecommons.org/licenses/by-nc/4.0/>

© Article author(s) (or their employer(s) unless otherwise stated in the text of the article) 2018. All rights reserved. No commercial use is permitted unless otherwise expressly granted.

REFERENCES

- Vassileva CM, Shabosky J, Boley T, et al. Tricuspid valve surgery: the past 10 years from the Nationwide Inpatient Sample (NIS) database. *J Thorac Cardiovasc Surg* 2012;143:1043–9.
- Stuge O, Liddicoat J. Emerging opportunities for cardiac surgeons within structural heart disease. *J Thorac Cardiovasc Surg* 2006;132:1258–61.
- Singh JP, Evans JC, Levy D, et al. Prevalence and clinical determinants of mitral, tricuspid, and aortic regurgitation (the Framingham Heart Study). *Am J Cardiol* 1999;83:897–902.
- Nath J, Foster E, Heidenreich PA. Impact of tricuspid regurgitation on long-term survival. *J Am Coll Cardiol* 2004;43:405–9.
- Topilsky Y, Nkomo VT, Vatury O, et al. Clinical outcome of isolated tricuspid regurgitation. *JACC Cardiovasc Imaging* 2014;7:1185–94.
- Paniagua D, Aldrich HR, Lieberman EH, et al. Increased prevalence of significant tricuspid regurgitation in patients with transvenous pacemakers leads. *Am J Cardiol* 1998;82:1130–2.
- Chang JD, Manning WJ, Ebrille E, et al. TRicuspid valve dysfunction following pacemaker or cardioverter-defibrillator Implantation. *J Am Coll Cardiol* 2017;69:2331–41.
- Mutlak D, Lessick J, Reisner SA, et al. Echocardiography-based spectrum of severe tricuspid regurgitation: the frequency of apparently idiopathic tricuspid regurgitation. *J Am Soc Echocardiogr* 2007;20:405–8.
- Höke U, Auger D, Thijssen J, et al. Significant lead-induced tricuspid regurgitation is associated with poor prognosis at long-term follow-up. *Heart* 2014;100:960–8.
- Utsunomiya H, Itabashi Y, Mihara H, et al. Functional tricuspid regurgitation caused by chronic atrial fibrillation: a real-time 3-dimensional transesophageal echocardiography study. *Circ Cardiovasc Imaging* 2017;10.
- Andersen MJ, Nishimura RA, Borlaug BA. The hemodynamic basis of exercise intolerance in tricuspid regurgitation. *Circ Heart Fail* 2014;7:911–7.
- Lau GT, Tan HC, Kritharides L. Type of liver dysfunction in heart failure and its relation to the severity of tricuspid regurgitation. *Am J Cardiol* 2002;90:1405–9.
- Maeder MT, Holst DP, Kaye DM. Tricuspid regurgitation contributes to renal dysfunction in patients with heart failure. *J Card Fail* 2008;14:824–30.
- Lancellotti P, Moura L, Pierard LA, et al. European Association of Echocardiography recommendations for the assessment of valvular regurgitation. Part 2: mitral and tricuspid regurgitation (native valve disease). *Eur J Echocardiogr* 2010;11:307–32.
- Zoghbi WA, Enriquez-Sarano M, Foster E, et al. Recommendations for evaluation of the severity of native valvular regurgitation with two-dimensional and Doppler echocardiography. *J Am Soc Echocardiogr* 2003;16:777–802.
- Mediratta A, Addetia K, Yamat M, et al. 3D echocardiographic location of implantable device leads and mechanism of associated tricuspid regurgitation. *JACC Cardiovasc Imaging* 2014;7:337–47.
- Nishimura K, Okayama H, Inoue K, et al. Visualization of traumatic tricuspid insufficiency by three-dimensional echocardiography. *J Cardiol* 2010;55:143–6.
- Hung J, Koelling T, Semigran MJ, et al. Usefulness of echocardiographic determined tricuspid regurgitation in predicting event-free survival in severe heart failure secondary to idiopathic-dilated cardiomyopathy or to ischemic cardiomyopathy. *Am J Cardiol* 1998;82:1301–3.
- Messika-Zeitoun D, Thomson H, Bellamy M, et al. Medical and surgical outcome of tricuspid regurgitation caused by flail leaflets. *J Thorac Cardiovasc Surg* 2004;128:296–302.
- Nishimura RA, Otto CM, Bonow RO, et al. 2014 AHA/ACC guideline for the management of patients with valvular heart disease: a report of the American College of Cardiology/American Heart Association Task Force on Practice Guidelines. *J Am Coll Cardiol* 2014;63:e57–185.
- Vahanian A, Alfieri O, Andreotti F, et al. Guidelines on the management of valvular heart disease (version 2012). *Eur Heart J* 2012;33:2451–96.
- McCarthy PM, Bhudia SK, Rajeswaran J, et al. Tricuspid valve repair: durability and risk factors for failure. *J Thorac Cardiovasc Surg* 2004;127:674–85.
- Hwang HY, Kim KH, Kim KB, et al. Treatment for severe functional tricuspid regurgitation: annuloplasty versus valve replacement. *Eur J Cardiothorac Surg* 2014;46:e21–27.
- Moraca RJ, Moon MR, Lawton JS, et al. Outcomes of tricuspid valve repair and replacement: a propensity analysis. *Ann Thorac Surg* 2009;87:83–9.
- Shinn SH, Schaff HV. Evidence-based surgical management of acquired tricuspid valve disease. *Nat Rev Cardiol* 2013;10:190–203.
- Marquis-Gravel G, Bouchard D, Perrault LP, et al. Retrospective cohort analysis of 926 tricuspid valve surgeries: clinical and hemodynamic outcomes with propensity score analysis. *Am Heart J* 2012;163:851–8.
- Rivera R, Duran E, Ajuria M. Carpentier's flexible ring versus De Vega's annuloplasty. A prospective randomized study. *J Thorac Cardiovasc Surg* 1985;89:196–203.
- Hwang HY, Kim KH, Kim KB, et al. Reoperations after tricuspid valve repair: re-repair versus replacement. *J Thorac Dis* 2016;8:133–9.
- Fukuda S, Song JM, Gillinov AM, et al. Tricuspid valve tethering predicts residual tricuspid regurgitation after tricuspid annuloplasty. *Circulation* 2005;111:975–9.
- Ghanta RK, Chen R, Narayanasamy N, et al. Suture bicuspidization of the tricuspid valve versus ring annuloplasty for repair of functional tricuspid regurgitation: midterm results of 237 consecutive patients. *J Thorac Cardiovasc Surg* 2007;133:117–26.
- Mangoni AA, DiSalvo TG, Vlahakes GJ, et al. Outcome following isolated tricuspid valve replacement. *Eur J Cardiothorac Surg* 2001;19:68–73.
- Ohata T, Kigawa I, Tohda E, et al. Comparison of durability of bioprostheses in tricuspid and mitral positions. *Ann Thorac Surg* 2001;71:S240–243.
- Nakano K, Ishibashi-Ueda H, Kobayashi J, et al. Tricuspid valve replacement with bioprostheses: long-term results and causes of valve dysfunction. *Ann Thorac Surg* 2001;71:105–9.
- Van Nooten GJ, Caes F, Taeymans Y, et al. Tricuspid valve replacement: postoperative and long-term results. *J Thorac Cardiovasc Surg* 1995;110:672–9.
- Cho WC, Park CB, Kim JB, et al. Mechanical valve replacement versus bioprosthetic valve replacement in the tricuspid valve position. *J Card Surg* 2013;28:212–7.
- Liu P, Qiao WH, Sun FQ, et al. Should a mechanical or biological prosthesis be used for a tricuspid valve replacement? A meta-analysis. *J Card Surg* 2016;31:294–302.
- Rizzoli G, Vendramin I, Nesseris G, et al. Biological or mechanical prostheses in tricuspid position? A meta-analysis of intra-institutional results. *Ann Thorac Surg* 2004;77:1607–14.
- Topilsky Y, Khanna AD, Oh JK, et al. Preoperative factors associated with adverse outcome after tricuspid valve replacement. *Circulation* 2011;123:1929–39.
- Kim JB, Jung SH, Choo SJ, et al. Clinical and echocardiographic outcomes after surgery for severe isolated tricuspid regurgitation. *J Thorac Cardiovasc Surg* 2013;146:278–84.
- Kim YJ, Kwon DA, Kim HK, et al. Determinants of surgical outcome in patients with isolated tricuspid regurgitation. *Circulation* 2009;120:1672–8.
- Lee JW, Song JM, Park JP, et al. Long-term prognosis of isolated significant tricuspid regurgitation. *Circ J* 2010;74:375–80.
- Pfannmüller B, Misfeld M, Borger MA, et al. Isolated reoperative minimally invasive tricuspid valve operations. *Ann Thorac Surg* 2012;94:2005–10.
- Ratnatunga CP, Edwards MB, Dore CJ, et al. Tricuspid valve replacement: UK Heart valve registry mid-term results comparing mechanical and biological prostheses. *Ann Thorac Surg* 1998;66:1940–7.
- Staab ME, Nishimura RA, Dearani JA. Isolated tricuspid valve surgery for severe tricuspid regurgitation following prior left heart valve surgery: analysis of outcome in 34 patients. *J Heart Valve Dis* 1999;8:567–74.
- Attenhofer Jost CH, Connolly HM, Scott CG, et al. Outcome of cardiac surgery in patients 50 years of age or older with Ebstein anomaly: survival and functional improvement. *J Am Coll Cardiol* 2012;59:2101–6.
- Kwon DA, Park JS, Chang HJ, et al. Prediction of outcome in patients undergoing surgery for severe tricuspid regurgitation following mitral valve surgery and role of tricuspid annular systolic velocity. *Am J Cardiol* 2006;98:659–61.
- Kuwaki K, Morishita K, Tsukamoto M, et al. Tricuspid valve surgery for functional tricuspid valve regurgitation associated with left-sided valvular disease. *Eur J Cardiothorac Surg* 2001;20:577–82.
- Rodés-Cabau J, Hahn RT, Latib A, et al. Transcatheter therapies for treating Tricuspid regurgitation. *J Am Coll Cardiol* 2016;67:1829–45.
- McElhinney DB, Cabalka AK, Aboulhosen JA, et al. Transcatheter tricuspid valve-in-valve implantation for the treatment of dysfunctional surgical bioprosthetic valves: an international, multicenter registry study. *Circulation* 2016;133:1582–93.