



# Rupture of Anterior Communicating Artery Aneurysm after Intravenous Thrombolysis for Acute Ischemic Stroke: A Case Report

Keiichi Tsuji,<sup>1</sup> Atsushi Tsuji,<sup>1</sup> Yayoi Yoshimura,<sup>1</sup> Nobuhiro Ogawa,<sup>2</sup> Takuya Nakazawa,<sup>1</sup> and Kazuhiko Nozaki<sup>1</sup>

**Objective:** Rupture of intracranial aneurysms after tissue plasminogen activator (t-PA) administration for acute ischemic stroke with an unruptured cerebral aneurysm is rare. We report a case of ruptured cerebral aneurysm after t-PA administration.

**Case Presentation:** A 74-year-old woman with dysarthria and left hemiparesis was admitted to our hospital, and acute lacunar infarction was found in the right corona radiata. One hour after t-PA administration, she complained of sudden headache and nausea, and her consciousness level deteriorated. Subarachnoid hemorrhage due to rupture of the anterior communicating aneurysm was confirmed and coil embolization was performed.

**Conclusion:** T-PA administration for acute ischemic stroke with an unruptured cerebral aneurysm risks rupture of the cerebral aneurysm, and careful judgment is needed in each case.

**Keywords** ► tissue plasminogen activator, acute cerebral infarction, unruptured intracranial aneurysm, subarachnoid hemorrhage

## Introduction

Tissue plasminogen activator (t-PA) therapy for acute ischemic stroke with an unruptured cerebral aneurysm requires careful administration.<sup>1)</sup> However, the incidence of symptomatic intracranial hemorrhage after t-PA administration has not increased and the possibility of cerebral aneurysms rupture is markedly low. Many studies demonstrated that the benefits of t-PA administration exceed its risks.<sup>2–6)</sup> In this study, we report a patient in whom an unruptured anterior communicating artery aneurysm ruptured immediately after t-PA administration for acute ischemic stroke, leading to subarachnoid hemorrhage.

<sup>1</sup>Department of Neurosurgery, Shiga University of Medical Science, Otsu, Shiga, Japan

<sup>2</sup>Department of Neurology, Shiga University of Medical Science, Otsu, Shiga, Japan

Received: March 16, 2020; Accepted: August 8, 2020

Corresponding author: Keiichi Tsuji, Department of Neurosurgery, Shiga University of Medical Science, Setatsukinowacho, Otsu, Shiga 520-2192, Japan

Email: tsujikei@belle.shiga-med.ac.jp



This work is licensed under a Creative Commons Attribution-NonCommercial-NoDerivatives International License.

©2021 The Japanese Society for Neuroendovascular Therapy

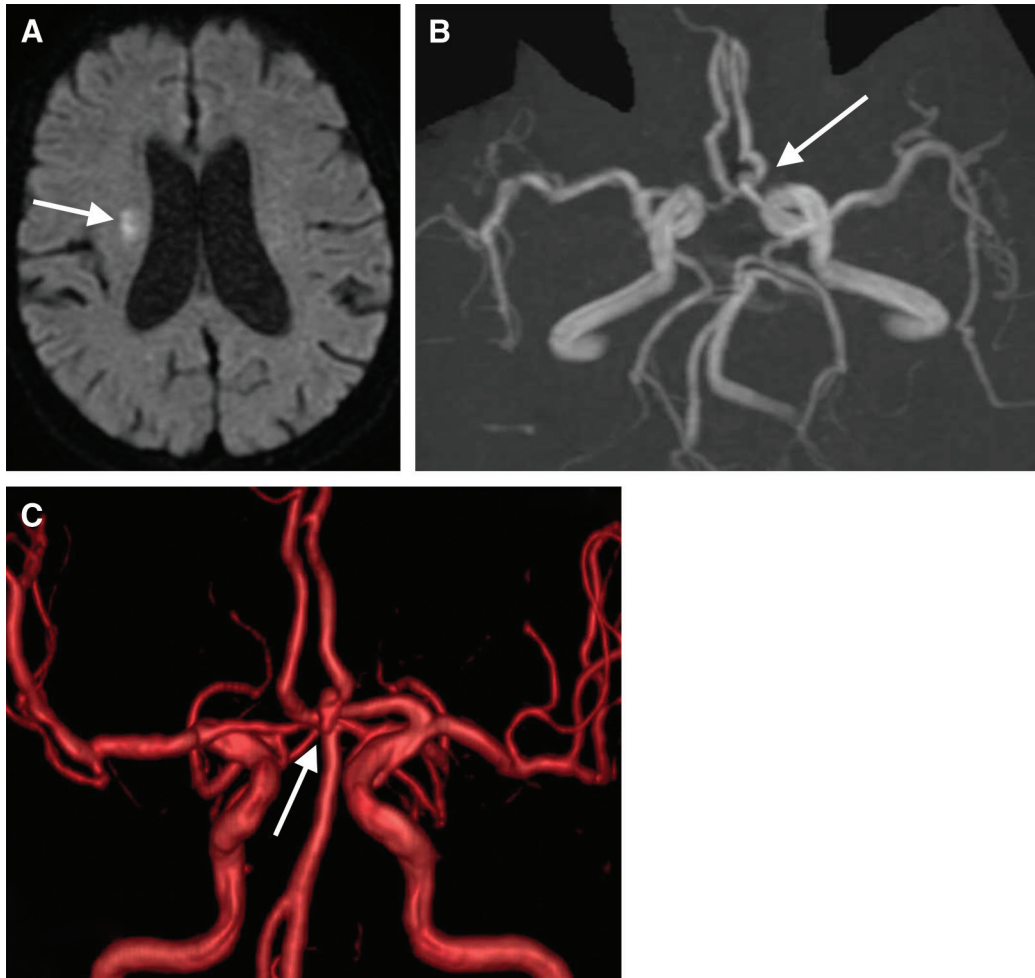
## Case Presentation

**Patient:** A 74-year-old woman.

**Medical history:** Hypertension and hyperlipidemia.

**Present illness:** At 8:00, dysarthria, dizziness, and numbness of the left hand and foot were noted while eating breakfast. She consulted a local clinic and was referred to our hospital under a tentative diagnosis of cerebral infarction. The time of arrival was 11:25.

**Findings on admission:** The Glasgow Coma Scale (GCS) score was E4V5M6. Left hemiparesis (manual muscle testing (MMT) of the upper limb: 3/5, MMT of the lower limb: 3/5, and mild left facial paralysis) and dysarthria were observed. The National Institutes of Health Stroke Scale (NIHSS) score was 5. According to the in-hospital protocol, emergency brain magnetic resonance imaging (MRI) was performed. Fresh infarction of the right corona radiata was detected. The diffusion-weighted imaging-Alberta Stroke Program Early CT Score (DWI-ASPECTS) was 10. Magnetic resonance angiography (MRA) revealed no occlusion of a major artery, but an anterior communicating artery aneurysm measuring 3 mm in diameter was found (**Fig. 1**).  
**Course after arrival:** After receiving informed consent, t-PA was administered 4 hours and 18 minutes after onset based on the patient's and her family's wishes because there was no factor indicating careful administration other

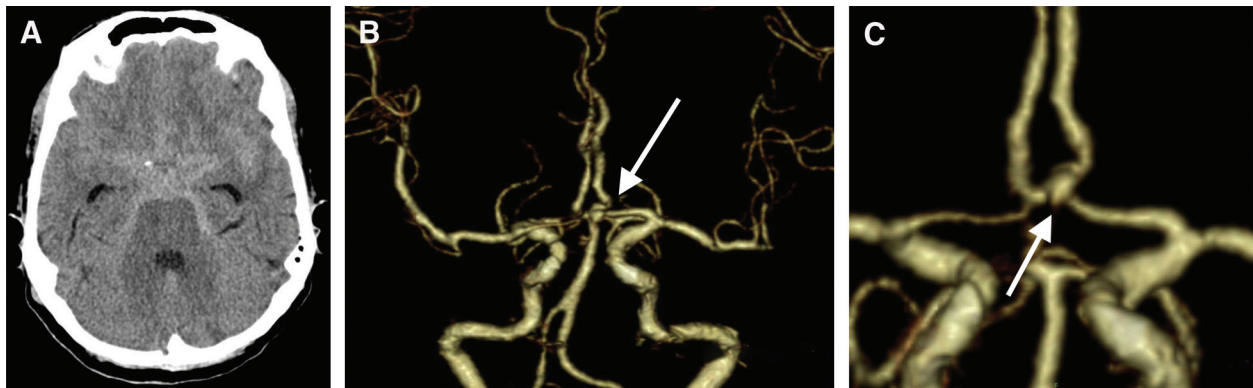


**Fig. 1** (A) DWI on admission showed a high-intensity area in the right corona radiata (arrow). (B) MRA (3D-TOF) showed a small aneurysm in the anterior communicating artery (arrow). (C) MRA (volume rendering) suggested appearance of bleb at the tip of the aneurysm (arrow). 3D-TOF: three-dimensional time of flight; DWI: diffusion-weighted imaging; MRA: magnetic resonance angiography

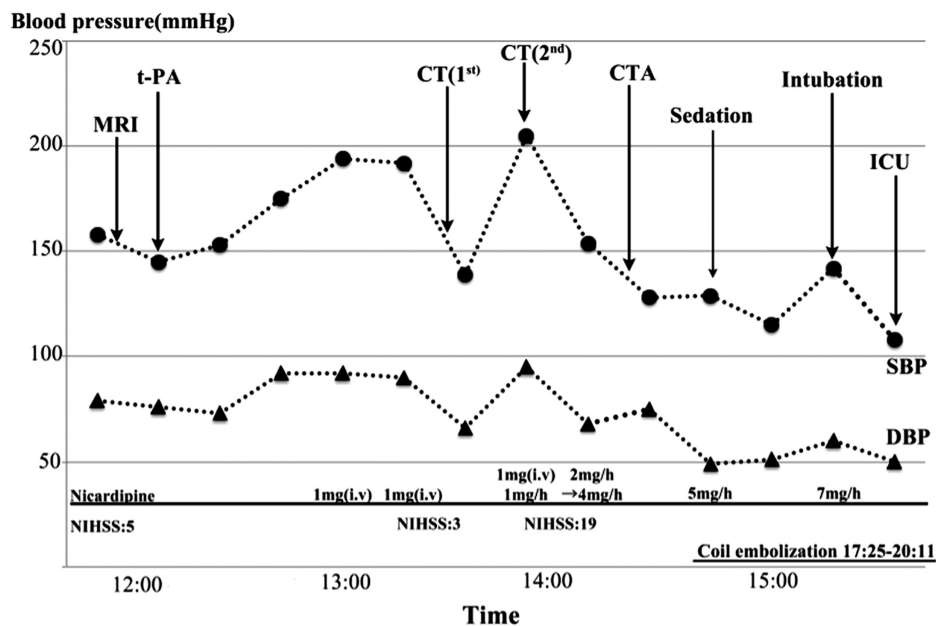
than an unruptured cerebral aneurysm and paralysis was relatively marked. After the start of administration, the systolic blood pressure reached  $\geq 190$  mmHg and nicardipine was administered to control it at  $\leq 185$  mmHg. Paralysis of the left upper limb reduced 1 hour after the start of administration and the NIHSS score was 3. No abnormality was noted on brain computed tomography (CT). Thereafter, the patient immediately complained of headache and nausea, and her consciousness level rapidly deteriorated, reaching a GCS score of E1V1M5. Brain CT revealed Fisher group 3 diffuse subarachnoid hemorrhage. CT angiography (CTA) demonstrated an anterior communicating artery aneurysm (**Fig. 2**), as detected on MRA. After blood pressure control and sedation, endotracheal intubation was conducted and the patient was moved to the intensive care unit (ICU) (**Fig. 3**).

Emergency cerebral angiography was performed. Three-dimensional (3D)-rotational angiography (RA) revealed an

anterior communicating artery aneurysm measuring  $3.5 \times 2.5$  mm in diameter with bleb formation (**Fig. 4A**), leading to a diagnosis of subarachnoid hemorrhage related to the rupture of this aneurysm. Subsequently, coil embolization of the cerebral aneurysm was performed (**Fig. 4B**). We considered the use of rescue devices, such as a balloon catheter, in preparation for intraoperative rupture, but the aneurysm ruptured after t-PA administration and embolization was conducted using a simple technique as promptly as possible. A 6Fr 25-cm sheath (Terumo, Tokyo, Japan) was inserted into the right femoral artery. A 6Fr Envoy 90 cm (Johnson & Johnson (J&J), Tokyo, Japan) was inserted to the petrous portion of the left internal carotid artery coaxially with a 4Fr CX catheter JB2 125 cm (KATECS, Kanagawa, Japan) using a Surf 0.035-inch 150-cm guidewire (PIOLAX, Inc., Kanagawa, Japan). A 3.4Fr TACTICS 120 cm (Technocrat, Aichi, Japan) was used as an intermediate



**Fig. 2** (A) CT showed diffuse subarachnoid hemorrhage in the basal cistern. (B) CTA showed an aneurysm (3.0 mm) in the anterior communicating artery (arrow). (C) Bleb was suspected at the tip of the aneurysm (arrow). CT: computed tomography; CTA: CT angiography



**Fig. 3** Blood pressure change from arriving to our hospital to entering the ICU. DBP: diastolic blood pressure; ICU: intensive care unit; i.v.: intravenous injection; SBP: systolic blood pressure

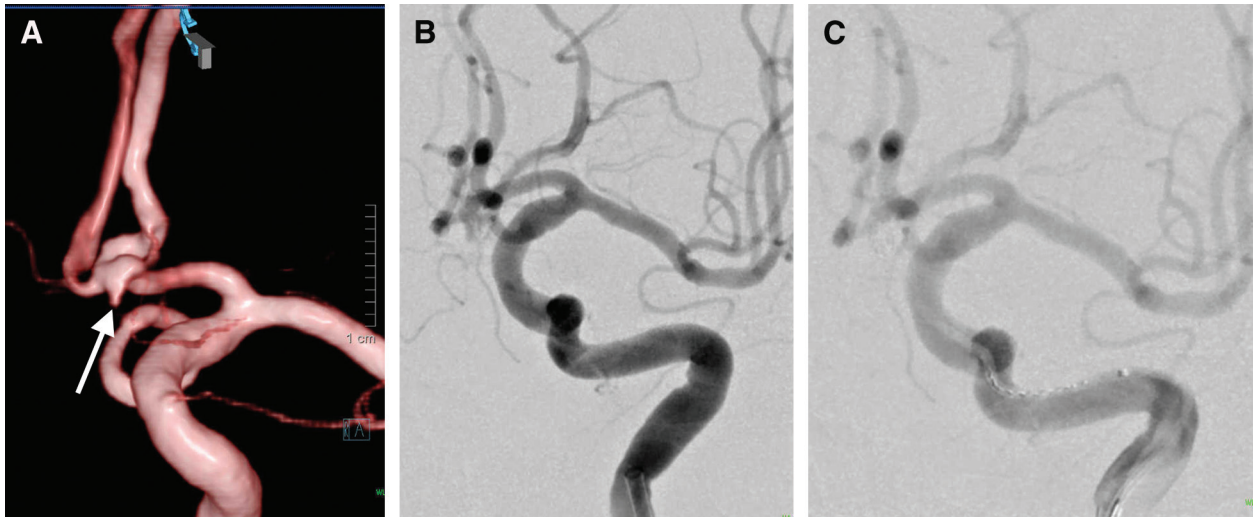
catheter. An Excelsior SL-10 preshaped 45° 150 cm (Stryker, Kalamazoo, MI, USA) was inserted into the aneurysm using a Traxcess 14 200 cm (Terumo). A frame was prepared using a GALAXY COMPLEX EXTRA-SOFT 3 mm/4 cm (J&J) and two coils of GALAXY G3 mini 2 mm/3 cm (J&J) were inserted. After confirming the disappearance of intra-aneurysmal contrast enhancement, the procedure was completed (**Fig. 4C**). No rebleeding was noted on brain CT the day after coil embolization. The administration of aspirin at 100 mg was started, and anti-vasospasm treatment using fasudil hydrochloride and ozagrel was initiated.

After coil embolization, there was no symptomatic cerebral vasospasm. After 6 weeks, ventriculoperitoneal shunt

for secondary normal-pressure hydrocephalus was performed. The patient was referred to a rehabilitation hospital with a modified Rankin Scale score of 3.

## Discussion

According to previous studies, the incidence of intracerebral hemorrhage after intravenous thrombolysis using t-PA ranges from 10.5% to 24.8%, and symptomatic hemorrhage accounts for 1.9%–5.9%.<sup>3–5,7)</sup> According to the guidelines for t-PA treatment in Japan, t-PA should be carefully administered to acute ischemic stroke patients with unruptured cerebral aneurysms.<sup>1)</sup> However, retrospective studies of intravenous thrombolysis using t-PA



**Fig. 4** (A) 3D-RA rotation angiography showed an aneurysm (3.5 × 2.5 mm) with bleb in the anterior communicating artery (arrow). (B) Angiography before coil embolization. (C) Angiography after the treatment showed the neck remnant. 3D-RA: three-dimensional rotation angiography

involving acute ischemic stroke patients with unruptured cerebral aneurysms reported that there was no significant difference in the incidence of intracerebral hemorrhage, including symptomatic hemorrhage, between patients with and without cerebral aneurysms, and that there was no subarachnoid hemorrhage related to cerebral aneurysmal rupture,<sup>2-6</sup> suggesting that t-PA can be used relatively safely even in patients with cerebral aneurysms. Four patients with myocardial or cerebral infarction and unruptured cerebral aneurysms in whom aneurysmal rupture after t-PA administration caused subarachnoid hemorrhage have been reported (**Table 1**).<sup>8-11</sup> The mean age of the patients, including ours, was 66.6 years, and four were females. Concerning the disease-type classification of infarction, myocardial infarction was noted in one patient, cardiogenic cerebral embolism in two, internal carotid artery dissection in one, and lacunar infarction in one patient. Concerning the aneurysmal site, three patients had anterior communicating artery aneurysms. In five of six cerebral aneurysms (five patients), the presence of a daughter sac was observed. The interval from t-PA administration until cerebral aneurysmal rupture varied. In three patients who died after cerebral aneurysmal rupture, the aneurysmal size was large and the post-rupture state was serious. An increase in the blood pressure after cerebral infarction may be primarily involved in the rupture of unruptured cerebral aneurysms after t-PA administration. In the acute phase of cerebral infarction, activation of the sympathetic nervous system promotes catecholamine and brain natriuretic peptide secretion, increasing the blood

pressure in many cases.<sup>12-14</sup> According to several studies, t-PA induces matrix metalloproteinase-9 (MMP-9) production,<sup>15</sup> and MMP-9 production occurs in an infarcted area, causing hemorrhage through destruction of the vascular basement membrane.<sup>16,17</sup> Since the possibility that t-PA is also involved in cerebral aneurysmal rupture cannot be excluded, the use of t-PA for acute ischemic stroke should be carefully considered patients with unruptured cerebral aneurysms. Furthermore, anterior communicating artery aneurysms may rupture even when the diameter is small,<sup>18</sup> as demonstrated in the present case. Bleb presence itself is a risk factor for rupture<sup>19</sup>; therefore, the site and shape of a cerebral aneurysm and risk of rupture must be considered before t-PA administration. When administering t-PA to patients with acute ischemic stroke, MRA or CTA should be performed to identify a blood vessel responsible for cerebral infarction or to search for an unruptured cerebral aneurysm rather than evaluating whether t-PA administration is appropriate based on plain CT findings alone. If an unruptured cerebral aneurysm is detected, the risk of rupture after t-PA administration must be considered. If the neurological severity is low in the absence of major artery occlusion, the risks and benefits of t-PA administration should be carefully assessed. After t-PA administration, strict systolic blood pressure control reduces the incidence of intracranial hemorrhage.<sup>20</sup> Therefore, it may be appropriate to consider downward adjustment of blood pressure control from after t-PA administration in acute ischemic stroke patients with unruptured cerebral aneurysms.

**Table 1** Patient characteristics of subarachnoid hemorrhage due to rupture of cerebral aneurysm after t-PA administration

Case	Author	Age	Sex	Type of infarction	NIHSS	Cerebral aneurysm	Size	Daughter sac	Onset time	WFNS	Treatment	mRS
1	Lagares, 1999	66	F	Myocardial infarction	0	Anterior communicating a.	N/A	+	8h	V	None	6
2	Rammos, 2012	51	F	Af (cardiogenic embolism) MCA occlusion	20	Anterior communicating a.	7 mm	+	N/A	IV	Thrombectomy Coiling	6
3	Haji, 2014	71	M	ICA dissection	15	Posterior communicating a.	6 mm	-	5h	V	None	6
4	Zaldivar, 2015	71	F	MCA occlusion Af (cardiogenic embolism) MCA occlusion	11	Posterior inferior cerebellar a. Middle cerebral a.	8.5 mm 6 mm	+	24h	I	Clipping	1
5	Present case	74	F	lacunar infarction	5	Anterior communicating a.	3 mm	+	1h	IV	Coiling	3

N/A: not available; Onset time: the time when SAH confirmed from t-PA administration; ICA: internal carotid artery; MCA: middle carotid artery; mRS: modified Rankin Scale; t-PA: tissue plasminogen activator

## Conclusion

We reported a patient in whom an unruptured anterior communicating artery aneurysm ruptured after t-PA administration for acute ischemic stroke, causing subarachnoid hemorrhage. The use of t-PA for patients in acute ischemic stroke with unruptured cerebral aneurysms must be carefully decided based on the risk of cerebral aneurysmal rupture and neurological severity of cerebral infarction.

## Disclosure Statement

The authors declare no conflict of interest.

## References

- 1) The Japan Stroke Society, The Japan Neurosurgical Society and The Japanese Society for Neuroendovascular Therapy: Guidelines for appropriate use of mechanical thrombectomy devices for acute stroke. Third Edition. March 2018. *Jpn J Stroke* 2018; 40: 285–309. (in Japanese)
- 2) Zhang CH, Li C, Wang YX, et al: Efficacy and safety of intravenous thrombolysis for the treatment of acute ischemic stroke patients with saccular intracranial aneurysms of  $\leq 3$  mm. *Cell Biochem Biophys* 2015; 72: 889–893.
- 3) Mittal MK, Seet RC, Zhang Y, et al: Safety of intravenous thrombolysis in acute ischemic stroke patients with saccular intracranial aneurysms. *J Stroke Cerebrovasc Dis* 2013; 22: 639–643.
- 4) Edwards NJ, Kamel H, Josephson SA: The safety of intravenous thrombolysis for ischemic stroke in patients with pre-existing cerebral aneurysms: a case series and review of the literature. *Stroke* 2012; 43: 412–416.
- 5) Sheth KN, Shah N, Morovati T, et al: Intravenous rt-PA is not associated with increased risk of hemorrhage in patients with intracranial aneurysms. *Neurocrit Care* 2012; 17: 199–203.
- 6) Kim JT, Park MS, Yoon W, et al: Detection and significance of incidental unruptured cerebral aneurysms in patients undergoing intravenous thrombolysis for acute ischemic stroke. *J Neuroimaging* 2012; 22: 197–200.
- 7) Broderick JP, Palesch YY, Demchuk AM, et al: Endovascular therapy after intravenous t-PA versus t-PA alone for stroke. *N Engl J Med* 2013; 368: 893–903.
- 8) Lagares A, Gómez PA, Lobato RD, et al: Cerebral aneurysm rupture after r-TPA thrombolysis for acute myocardial infarction. *Surg Neurol* 1999; 52: 623–626.
- 9) Rammos SK, Neils DM, Fraser K, et al: Anterior communicating artery aneurysm rupture after intravenous thrombolysis for acute middle cerebral artery thromboembolism: case report. *Neurosurgery* 2012; 70: E1603–E1607; discussion E1607.

- 10) Haji F, van Adel B, Avery M, et al: Intracranial aneurysm rupture following intravenous thrombolysis for stroke. *Can J Neurol Sci* 2014; 41: 95–98.
- 11) Zaldivar-Jolissaint JF, Messerer M, Bervini D, et al: Rupture of a concealed aneurysm after intravenous thrombolysis of a thrombus in the parent middle cerebral artery. *J Stroke Cerebrovasc Dis* 2015; 24: e63–65.
- 12) Qureshi AI, Ezzeddine MA, Nasar A, et al: Prevalence of elevated blood pressure in 563,704 adult patients with stroke presenting to the ED in the United States. *Am J Emerg Med* 2007; 25: 32–38.
- 13) Nakagawa K, Yamaguchi T, Seida M, et al: Plasma concentrations of brain natriuretic peptide in patients with acute ischemic stroke. *Cerebrovasc Dis* 2005; 19: 157–164.
- 14) Myers MG, Norris JW, Hachinski VC, et al: Plasma norepinephrine in stroke. *Stroke* 1981; 12: 200–204.
- 15) Rosell A, Cuadrado E, Ortega-Aznar A, et al: MMP-9-positive neutrophil infiltration is associated to blood-brain barrier breakdown and basal lamina type IV collagen degradation during hemorrhagic transformation after human ischemic stroke. *Stroke* 2008; 39: 1121–1126.
- 16) Cunningham LA, Wetzel M, Rosenberg GA: Multiple roles for MMPs and TIMPs in cerebral ischemia. *Glia* 2005; 50: 329–339.
- 17) Rosell A, Ortega-Aznar A, Alvarez-Sabin J, et al: Increased brain expression of matrix metalloproteinase-9 after ischemic and hemorrhagic human stroke. *Stroke* 2006; 37: 1399–1406.
- 18) Ikawa F, Morita A, Tominari S et al: Rupture risk of small unruptured cerebral aneurysms. *J Neurosurg* 2020; 132: 69–78.
- 19) Lindgren AE, Koivisto T, Björkman J, et al: Irregular shape of intracranial aneurysm indicates rupture risk irrespective of size in a population-based cohort. *Stroke* 2016; 47: 1219–1226.
- 20) Anderson CS, Huang Y, Lindley RI, et al: Intensive blood pressure reduction with intravenous thrombolysis therapy for acute ischaemic stroke (ENCHANTED): an international, randomised, open-label, blinded-endpoint, phase 3 trial. *Lancet* 2019; 393: 877–888.