

# The Transient Chondrocyte Phenotype in Human Osteophytic Cartilage: A Role of Pigment Epithelium-Derived Factor?

Cartilage  
4(3) 249–255  
© The Author(s) 2012  
Reprints and permissions:  
sagepub.com/journalsPermissions.nav  
DOI: 10.1177/1947603513480809  
cart.sagepub.com  


Patricia Klinger<sup>1,2,\*</sup>, Christian Beyer<sup>3,\*</sup>, Arif B. Ekici<sup>4</sup>, Hans-Dieter Carl<sup>2</sup>, Georg Schett<sup>3</sup>, Bernd Swoboda<sup>2</sup>, Friedrich F. Hennig<sup>1</sup>, and Kolja Gelse<sup>1</sup>

## Abstract

**Objective:** To identify factors that are responsible for the phenotypic differences between transient chondrocytes within human osteophytes prone to endochondral ossification and permanent chondrocytes within articular cartilage persisting for decades. **Methods:** Differential gene expression of chondrocytes from human osteophytes or from articular cartilage was detected by cDNA microarray analysis. The expression of pigment epithelium-derived factor (PEDF), one of the most impressively differentially expressed genes, was validated by quantitative reverse transcriptase polymerase chain reaction as well as immunohistochemistry. The mode of action of PEDF was explored by cell viability assays and by detecting target genes. **Results:** PEDF mRNA expression was upregulated by 118.5-fold ( $P = 0.01$ ) in human osteophytic cartilage compared with articular cartilage, which was reflected by strong immunostaining for PEDF in the cartilaginous layer of osteophytes but largely negative staining in articular cartilage. Elevated levels of PEDF in osteophytes were associated with enhanced apoptosis. PEDF increased the expression of the proapoptotic factor FasL and induced cell death in cell culture. Osteochondral progenitor cells were more responsive to PEDF than differentiated articular chondrocytes. **Conclusions:** The induction of the proapoptotic factor PEDF within the osteophyte cartilage suggests a molecular concept for the transient chondrocyte phenotype that arises from progenitor cells and is prone to terminal differentiation and cell death.

## Keywords

osteoarthritis, osteophyte, transient chondrocyte phenotype, PEDF

## Introduction

Osteophytes are cartilaginous-osseous outgrowths that may be regarded as an attempt for regeneration in osteoarthritic joints. However, the cells within the cartilaginous layer of human growing osteophytes do not retain a permanent stable chondrocyte phenotype but are finally prone to terminal differentiation and endochondral ossification.<sup>1</sup> The factors that are associated with this transient phenotype, instead of a stable chondrocyte phenotype, have not yet been clarified. Corresponding to the growth plate, terminal chondrocyte differentiation is closely associated with cell death, which suggests a role of proapoptotic factors.<sup>2,3</sup>

Pigment epithelium-derived factor (PEDF) has recently been identified as a factor that is significantly upregulated in late-stage osteoarthritic cartilage in which chondrocytes are confronted with terminal differentiation and cell death.<sup>4,5</sup> Because PEDF is known to induce cell death of endothelial cells,<sup>6</sup> it may also be responsible for terminal differentiation and cell death in cartilage.

Using cDNA microarray analysis, we found PEDF among the factors with the strongest differential expression and significant higher levels (118.5-fold) in osteophytic cartilage compared with articular cartilage. This study explored if PEDF interferes with the stable chondrocyte

<sup>1</sup>Department of Orthopaedic Trauma Surgery, University Hospital Erlangen, Erlangen, Germany

<sup>2</sup>Department of Orthopaedic Rheumatology, University of Erlangen-Nuremberg, Erlangen, Germany

<sup>3</sup>Department of Internal Medicine III and Institute for Clinical Immunology, University Erlangen-Nuremberg, Erlangen, Germany

<sup>4</sup>Institute of Human Genetics, University of Erlangen-Nuremberg, Erlangen, Germany

\*These authors contributed equally to this work.

## Corresponding Author:

Kolja Gelse, MD, Department of Orthopaedic Trauma Surgery, University Hospital Erlangen, Krankenhausstr. 12, 91054 Erlangen, Germany.  
Email: kolja.gelse@web.de

phenotype by promoting terminal differentiation or cell death.

## Methods

### *Tissue Samples and Cell Preparation*

Articular and osteophytic cartilage probes were obtained as matched pairs from the same knee joints of 15 patients undergoing total knee arthroplasty for osteoarthritis. Macroscopically intact articular cartilage was isolated from the dorsal part of the femoral condyles. Osteophytic cartilage was isolated from the same respective joints from the cartilaginous cap of the osteophytes located at the edges of the femoral condyles. Osteophytes were distinguished from the marginal transition area of the joint surface by the existence of a concave ridge toward the joint surface. To selectively isolate the cartilaginous cap of the osteophytes and to exclude any abrasion of bone trabeculae and calcified tissue of the deepest cartilaginous zone, only minimal forces were applied with a scalpel by cutting tangentially to the surface to yield thin consecutive slices of less than 1 mm thickness. Each patient gave informed consent prior to surgery, the institutional ethics committee approved the study and it also has the approval of ethics committee of the University of Erlangen-Nuremberg, Ref. No. 3555.

### *Microarray*

mRNA was isolated from cartilage as described previously.<sup>7</sup> The quality of isolated RNA was assessed using the Agilent 2100 bioanalyzer (Agilent Technologies, Santa Clara, CA), and the concentration was determined with a spectrophotometer (ND 1000; NanoDrop Technologies, Rockland, DE). RNA preparations from a total of 15 different donors were used. Three paired sets of mRNA preparations of articular and osteophytic cartilage each of five donors in equal quantities were used for analysis. Biotin-labeled cRNA was obtained using the two-cycle eukaryotic target labeling assay and hybridized to Affymetrix GeneChip Human Genome U133 Plus 2.0 arrays according to the standard protocol (Affymetrix Inc., Santa Clara, CA). GeneChip Operating Software was used for quality controls of the assays and included scaling factor (SF) and percentage of genes present (GP). Arrays with SF difference <3 and GP >20% were analyzed further. Raw data from gene expression arrays (CEL-files) were processed in Partek Genomics Suite, version 6.5 (Partek Inc., St. Louis, MO) using GCRMA algorithm normalization, PCA (principle components analysis) without outliers, and analysis of variance (ANOVA) yielding *P*-values and fold change values.

Microarray data presented in this article can be retrieved from the NIH Gene Expression Omnibus (GEO; National Center for Biotechnology Information [NCBI], GSE43923).

### *Cell Culture Experiments*

Articular chondrocytes (AC) and osteophytic chondrocytes (OC) were isolated from intact knee articular cartilage or the cartilaginous layer from osteophytes from five different donors as described previously.<sup>8</sup> As a progenitor cell population that potentially gives rise to forming osteophytes, we isolated osteochondral progenitor cells (PC) from epiphyseal bone marrow by flushing resected osteochondral specimen obtained from total knee joint arthroplasty. Suspended cells were purified from debris with a sterile nylon filter and resuspended in full Dulbecco's modified Eagle's medium (DMEM; Gibco, Grand Island, NY) with 10% fetal calf serum (FCS). The plastic adherent cell population was used for the experiments.

After the first passage, cells were plated at semiconfluence, cultivated in DMEM, supplemented with 1% FCS. Recombinant PEDF (R&D Systems, Minneapolis, MN) was added in concentrations of 10, 100, and 200 ng/mL. After stimulation for 6 hours, total RNA was isolated as described previously.<sup>8</sup> For evaluation of the cell viability, cells were stimulated for a total of 6 days, whereas medium and PEDF were refreshed after 3 days. After 6 days, dead cells were detected by Trypan blue staining (Invitrogen, Darmstadt, Germany).

### *Quantitative RT-PCR*

Gene expression of PEDF, Fas ligand (FasL), alkaline phosphatase (ALP), osteocalcin (BGLAP), type 10 collagen (Col10a1), and matrix metalloproteinase-13 (MMP13) was analyzed by quantitative reverse transcriptase polymerase chain reaction (qRT-PCR) using an ABI Prism 7900 sequence detection system (Applied Biosystems, Foster City, CA) and Verso One-Step qRT-PCR Rox Kit (Abgene, Hamburg, Germany). The relative amount of target mRNA was determined and normalized to that of  $\beta$ -2-microglobulin ( $\beta$ 2m) mRNA as described previously.<sup>7</sup> Primer and probe sets were purchased by Applied Biosystems (Foster City, CA).

### *Immunohistological Analysis*

Specimens from osteophytes and from macroscopically intact articular cartilage of the same joints were stained with safranin-O/fast green for morphological assessment.

For immunohistochemical detection of PEDF, sections were pretreated with 0.05% trypsin and incubated with goat antihuman PEDF antibodies (Santa Cruz Biotechnology, Santa Cruz, CA), followed by biotinylated secondary antibodies (Dianova, Hamburg, Germany). Bound antibodies were visualized by a complex of streptavidin and biotinylated alkaline phosphatase (Vectastain, ABC-AP, Vector Laboratories, Burlingame, CA). The sections were developed with fast red and counterstained with hematoxylin.

**Table 1.** Differential Gene Expression in Osteophytic Cartilage (“O”) Compared with Articular Cartilage (“A”).

GenBank Accession Number	Gene Symbol	Gene Title	Fold Change ("O" vs. "A")	PValue	qRT-PCR	
					Fold Change ("O" vs. "A"), mean (95% CI)	PValue
NM_199173	BGLAP	Bone gamma-carboxyglutamate (gla) protein	91.2	0.003		
NM_004994	MMP9	Matrix metalloproteinase 9	65.5	0.001		
NM_001611	TRAP/ACPS	Tartrate resistant acid phosphatase 5	47.4	0.001		
NM_002615	SERPINF1/PEDF	Serpin peptidase inhibitor, clade F (PEDF)	44.2	0.01	118.5 (74.8-162.2) (n = 15)	0.010
NM_001613	ACTA2	Actin, alpha 2, smooth muscle, aorta	42.9	0.002		
NM_000067	CA2	Carbonic anhydrase II	38.0	0.003		
NM_000237	LPL	Lipoprotein lipase	34.6	0.001		
NM_000609	CXCL12	Chemokine (C-X-C motif) ligand 12	32.9	<0.001		
NM_000237	LPL	Lipoprotein lipase	32.9	0.002		
NM_012072	CD93	CD93 molecule	32.3	<0.001		
NM_004407	DMPI	Dentin matrix acidic phosphoprotein 1	32.0	<0.001		
NM_002851	PTPRZ1	Protein tyrosine phosphatase, receptor-type, Z polypeptide 1	31.3	<0.001		
NM_001442	FABP4	Fatty acid binding protein 4, adipocyte	31.3	<0.001		
NM_001720	BMP8B	Bone morphogenetic protein 8b	28.7	<0.001		
NM_025237	SOST	Sclerostin	26.8	0.004		
NM_004684	SPARCL1	SPARC-like 1 (hevin)	25.9	0.009		
NM_000552	VWF	von Willebrand factor	25.5	0.001		
NM_213599	ANO5	Anoctamin 5	24.2	<0.001		
NM_003617	RGSS5	Regulator of G-protein signaling 5	24.1	0.006		
NM_052960	RBP7	Retinol binding protein 7, cellular	23.9	<0.001		
NM_015265	SATB2	SATB homeobox 2	23.5	0.002		
NM_001870	CPA3	Carboxypeptidase A3 (mast cell)	22.9	<0.001		
NM_000072	CD36	CD36 molecule	22.7	<0.001		
NM_021201	MS4A7	Membrane-spanning 4-domains, subfamily A, member 7	22.3	0.01		
NM_000442	PECAM1	Platelet/endothelial cell adhesion molecule	21.7	0.003		
NM_000089	COL1A2	Collagen, type I, alpha 2	21.3	0.002		
XM_002348112	CYAT1 /// IGLV1-44	Cyclosporin A transporter 1 /// Immunoglobulin lambda variable 1-44	21.1	0.001		
NM_000072	CD36	CD36 molecule	21.0	<0.001		
NM_004348	RUNX2	Runt-related transcription factor 2	20.8	<0.001		
NM_001846	COL4A2	Collagen, type IV, alpha 2	20.4	0.008		
NM_002852	PTX3	Pentraxin 3, long	20.4	0.014		
NM_019035	PCDH18	Protocadherin 18	20.2	0.001		
NM_003617	RGSS5	Regulator of G-protein signaling 5	20.1	0.004		
Putative PEDF receptors						
NM_020376	PNPLA2	Patatin-like phospholipase domain containing 2	0.99	0.782		
NM_002336	LRP6	Low-density lipoprotein receptor-related protein 6	0.715575	0.263		

qRT-PCR = quantitative reverse transcriptase polymerase chain reaction; CI = confidence interval; PEDF = pigment epithelium-derived factor. Shown in the table are the genes with more than 20-fold higher expression in osteophytic cartilage compared with articular cartilage.

## TUNEL Staining

For the detection of *in situ* DNA breaks, the TUNEL reaction was applied using the In Situ Cell Death Detection Kit, AP (Roche, Mannheim, Germany) as described previously.<sup>9</sup>

## Statistical Analysis

The microarray data of  $N = 3$  paired preparations were analyzed with Partek Genomics Suite software (St. Louis, MO). Differential gene expression between the two cartilaginous tissues was considered to be significant if the false discovery rates were less than 0.01 and the fold-changes were 20-fold or higher between the different microarrays. Quantitative gene expression of paired individual preparations from  $N = 15$  different donors was analyzed using Student's *t*-test, with  $P < 0.05$  considered significant. Cell culture assays were performed in at least three independent experiments and analyzed using Student's *t*-test, with  $P < 0.05$  considered significant.

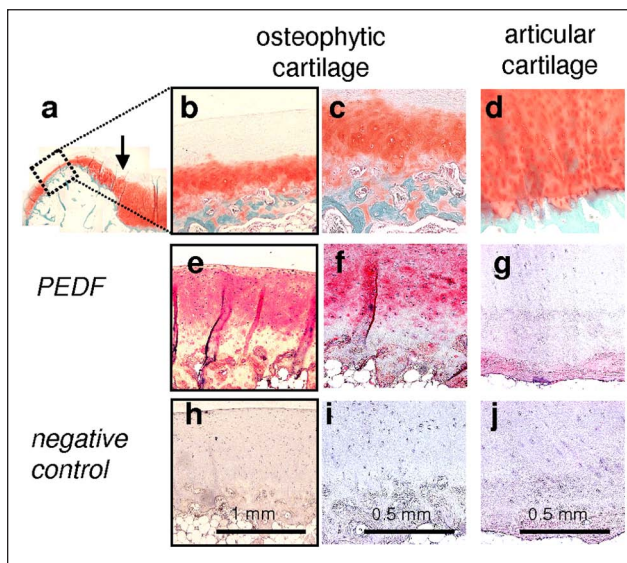
## Results

The microarray analysis served as a genome-wide screening for genes with differential expression in osteophytic versus articular cartilage (**Table 1**). Among the 47,000 screened transcripts, we found PEDF (SERPINF1) among the genes with the greatest differential expression. The validity of the microarray data was confirmed by qRT-PCR with a 118.5-fold enhanced expression of PEDF in the osteophytic cartilage compared with normal articular cartilage ( $P = 0.01$ ). Putative receptors with affinity for PEDF, PNPLA2, and LRP6 were not differentially expressed.

Histologically, human osteophytes are characterized by a superficial fibrocartilaginous layer, a zone of hyaline-like cartilage with interspersed hypertrophic chondrocytes in the lower half, followed by bone trabeculae underneath (**Fig. 1a-c**). In contrast, intact articular cartilage lacks hypertrophic chondrocytes (**Fig. 1d**).

Immunohistochemistry of osteophytes revealed that PEDF staining was not confined to the deeper zone of hypertrophic cells but present within the extracellular matrix of the whole cartilaginous layer of osteophytes. Except for vessels within the subchondral space, bone trabeculae were negative for PEDF (**Fig. 1e and f**). Intact articular cartilage from the same joints was largely negative for PEDF throughout all layers (**Fig. 1g**).

Cell death within the tissue specimen was assessed by TUNEL staining, which demonstrated a striking number of positively stained (dead) cells in the middle and deeper cartilaginous layer of osteophytes (**Fig. 2b**). Cells of the most superficial fibrocartilaginous layer of osteophytes (**Fig. 2a**)



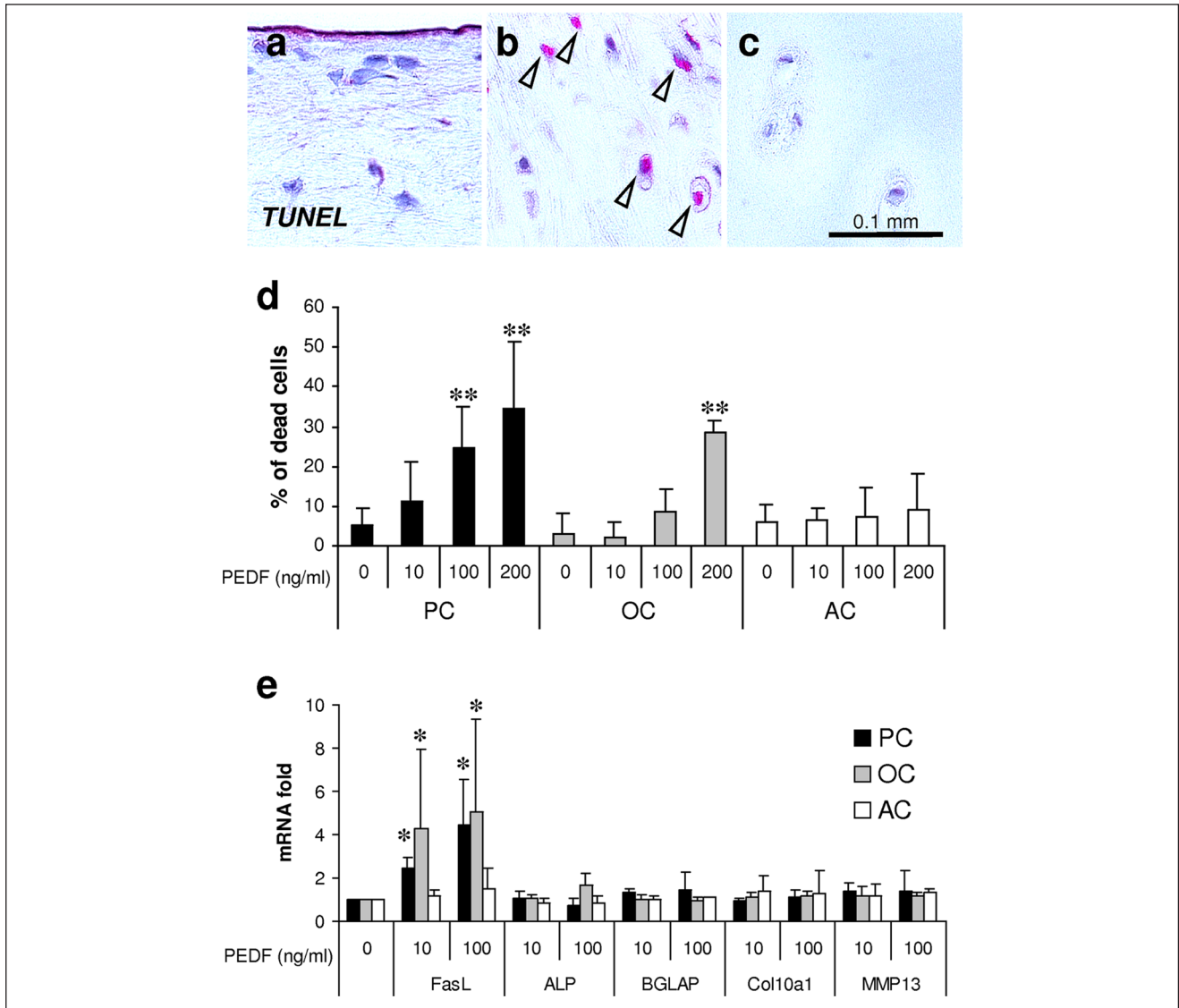
**Figure 1.** Immunohistochemical detection of PEDF in human osteophytic cartilage and articular cartilage. Safranin-O/fast-green staining depicts an overview of an osteophyte at the joint margin. The arrow indicates the border between articular cartilage and osteophyte (**a**). Greater magnifications allow distinguishing superficial fibrocartilage, hyaline cartilage rich of proteoglycans, and the deep zone with hypertrophic chondrocytes followed by bony trabeculae (**b**, greater magnification in **c**). Articular cartilage is characterized by nonhypertrophic chondrocytes and a horizontal tide-mark (**d**). Immunohistochemical staining for PEDF is strongly positive in the cartilaginous layer (**e**, **f**). Intact articular cartilage does virtually not stain for PEDF (**g**). Negative controls exclude any nonspecific antibody binding (**h-j**). PEDF = pigment epithelium-derived factor.

or those of articular cartilage (**Fig. 2c**) stained negative indicating their viable status.

The influence of PEDF on cell death was investigated *in vitro* using freshly isolated AC, OC, and an osteochondral PC population. Stimulation of PEDF induced cell death of OC and PC in a dose-dependent manner. The percentage of dead cells amounted to 34.3% ( $P = 0.002$ ) for PC or 28.33% ( $P = 0.01$ ) for OC under the influence of 200 ng/mL PEDF, respectively (**Fig. 2d**). In contrast, the percentage of induced cell death of articular chondrocytes by PEDF did not reach the level of significance (**Fig. 2d**).

To explore the potential mechanism of action of PEDF, we detected its influence on the expression of selected genes involved in apoptosis and terminal chondrocyte differentiation. In OC and PC, PEDF significantly induced the expression of FasL (**Fig. 2e**). In AC, however, the upregulation of FasL by PEDF did not reach the level of significance. PEDF had no influence on the expression of markers for terminal chondrocyte differentiation including ALP, BGLAP, Col10a1, and MMP13.





**Figure 2.** Detection of cell death by the TUNEL method depicts negative staining of cells within the most superficial layer of osteophytes (a) but a relevant amount of positive (apoptotic) cells within the cartilaginous zone of osteophytes (indicated by arrowheads) (b). Cells within intact articular cartilage are negative for TUNEL staining (c). *In vitro*, PEDF dose-dependently induces cell death of osteochondral progenitor cells (PC) and osteophytic chondrocytes (OC), but has only minor impact on the viability of articular chondrocytes (AC) (d). The effect of PEDF on the expression of selected genes involved in apoptosis and terminal differentiation was detected by quantitative reverse transcriptase polymerase chain reaction, which revealed significant upregulation of FasL in PC and OC. All other genes tested were not influenced by PEDF (e). \* $P < 0.05$ ; \*\* $P < 0.01$ . PEDF = pigment epithelium-derived factor.

## Discussion

In this study, we demonstrate that PEDF is abundantly expressed by chondrocytes of human osteophytic cartilage. Osteophytes may be regarded as an attempt for cartilage regeneration; however, human osteophytic cartilage does not permanently persist but undergoes the program of endochondral ossification. Interestingly, high levels of PEDF could also be detected in the murine fetal growth plate, a tissue that physiologically relies on the endochondral

ossification process with replacement of cartilage by bone during skeletal growth.<sup>10</sup> Thus, we assume that the pro-apoptotic properties of PEDF may contribute to the transient status of human osteophytic chondrocytes by inducing their terminal differentiation and limited survival. Whereas the morphological patterns and cellular events during skeletal development and joints diseases, including osteophyte formation, may differ to some degree between different species, the action of PEDF may notwithstanding represent a basic biological principle for terminal chondrocyte

differentiation that can be observed both within osteophytes in adult organisms and the growth plate cartilage in the fetal or juvenile organism.

In contrast, healthy human articular cartilage is characterized by absence of PEDF activity. Without a doubt, the long-term survival and phenotypic stability of articular chondrocytes involves a plethora of different physical, biochemical, and biomechanical parameters. Thus, absence of PEDF may not be regarded as the primary cause but rather as a relevant prerequisite in this aspect. Indeed, other genome-wide cDNA array analyses support the functional relevance of PEDF, because the stable phenotype of articular chondrocytes was shown to be associated with significant lower PEDF expression than dedifferentiated senescent chondrocytes following prolonged culturing or nondifferentiated mesenchymal stem cells.<sup>11,12</sup>

PEDF is known as a potent inhibitor of angiogenesis<sup>13</sup> and tumor growth.<sup>14</sup> Its antiangiogenic and antimetastatic properties can largely be ascribed to its proapoptotic activities.<sup>14</sup> In this study, we could confirm proapoptotic properties of PEDF predominantly on incompletely differentiated chondroprogenitor cells, which supports the rationale for the treatment of malignancies of osteochondral tissues by PEDF.<sup>15,16</sup> Importantly, articular cartilage may not be affected by these treatments, because phenotypically stable articular chondrocytes are less responsive to external PEDF stimuli, which may be ascribed to a lower expression of a yet unknown PEDF receptor. The data suggest that healthy articular cartilage is protected from the proapoptotic PEDF signal in two ways, namely, by a lower intrinsic expression and a lower responsiveness. However, the detailed exploration of the PEDF-receptor status in osteochondral tissues will be a task for future studies, because PNPLA2 and LRP6, two receptors with putative PEDF affinity,<sup>17,18</sup> were not differentially expressed in the present analysis.

As a conclusion, the induction of PEDF during osteophyte formation provides a molecular concept for the transient phenotype of chondrocyte-like cells arising from mesenchymal progenitor cells that are prone to terminal differentiation and cell death.

### Acknowledgments and Funding

We thank M. Pflüger and H. Rohrmüller for expert technical support. This study was supported by the German Research Foundation (DFG; Grant GE 1975/2-1; to KG) and by the Interdisciplinary Center of Clinical Research (IZKF; Grant J29; to CB).

### Declaration of Conflicting Interests

The author(s) declared no potential conflicts of interest with respect to the research, authorship, and/or publication of this article.

### Ethical Approval

This study was approved by the ethics committee of the University of Erlangen-Nuremberg, Ref. No. 3555.

### References

- Gelse K, Soder S, Eger W, Diemtar T, Aigner T. Osteophyte development—molecular characterization of differentiation stages. *Osteoarthritis Cartilage*. 2003;11(2):141-8.
- Gibson G. Active role of chondrocyte apoptosis in endochondral ossification. *Microsc Res Tech*. 1998;43(2):191-204.
- Shapiro IM, Adams CS, Freeman T, Srinivas V. Fate of the hypertrophic chondrocyte: microenvironmental perspectives on apoptosis and survival in the epiphyseal growth plate. *Birth Defects Res C Embryo Today*. 2005;75(4):330-9.
- van der Kraan PM, van den Berg WB. Chondrocyte hypertrophy and osteoarthritis: role in initiation and progression of cartilage degeneration? *Osteoarthritis Cartilage*. 2012;20(3):223-32.
- Pfander D, Grimmer C, Aigner T, Swoboda B, Schmidt R, Cramer T. Pigment epithelium derived factor—the product of the EPC-1 gene—is expressed by articular chondrocytes and up regulated in osteoarthritis. *Ann Rheum Dis*. 2006;65(7):965-7.
- Volpert OV, Zaichuk T, Zhou W, Reiher F, Ferguson TA, Stuart PM, *et al*. Inducer-stimulated Fas targets activated endothelium for destruction by anti-angiogenic thrombospondin-1 and pigment epithelium-derived factor. *Nat Med*. 2002;8(4):349-57.
- Klinger P, Surmann-Schmitt C, Brem M, Swoboda B, Distler JH, Carl HD, *et al*. Chondromodulin 1 stabilizes the chondrocyte phenotype and inhibits endochondral ossification of porcine cartilage repair tissue. *Arthritis Rheum*. 2011;63(9):2721-31.
- Grimmer C, Pfander D, Swoboda B, Aigner T, Mueller L, Hennig FF, *et al*. Hypoxia-inducible factor 1alpha is involved in the prostaglandin metabolism of osteoarthritic cartilage through up-regulation of microsomal prostaglandin E synthase 1 in articular chondrocytes. *Arthritis Rheum*. 2007;56(12):4084-94.
- Gelse K, Pfander D, Obier S, Knaup KX, Wiesener M, Hennig FF, *et al*. Role of hypoxia-inducible factor 1 alpha in the integrity of articular cartilage in murine knee joints. *Arthritis Res Ther*. 2008;10(5):R111.
- Quan GM, Ojaimi J, Li Y, Kartsogiannis V, Zhou H, Choong PF. Localization of pigment epithelium-derived factor in growing mouse bone. *Calcif Tissue Int*. 2005;76(2):146-53.
- Dehne T, Schenk R, Perka C, Morawietz L, Pruss A, Sittlinger M, *et al*. Gene expression profiling of primary human articular chondrocytes in high-density micromasses reveals patterns of recovery, maintenance, re- and dedifferentiation. *Gene*. 2010;462(1-2):8-17.
- Boeuf S, Steck E, Peltari K, Hennig T, Buneb A, Benz K, *et al*. Subtractive gene expression profiling of articular cartilage and

- mesenchymal stem cells: serpins as cartilage-relevant differentiation markers. *Osteoarthritis Cartilage*. 2008;16(1):48-60.
13. Dawson DW, Volpert OV, Gillis P, Crawford SE, Xu H, Benedict W, *et al*. Pigment epithelium-derived factor: a potent inhibitor of angiogenesis. *Science*. 1999;285(5425):245-8.
  14. Broadhead ML, Dass CR, Choong PF. Cancer cell apoptotic pathways mediated by PEDF: prospects for therapy. *Trends Mol Med*. 2009;15(10):461-7.
  15. Tan ML, Choong PF, Dass CR. Anti-chondrosarcoma effects of PEDF mediated via molecules important to apoptosis, cell cycling, adhesion and invasion. *Biochem Biophys Res Commun*. 2010;398(4):613-8.
  16. Broadhead ML, Choong PF, Dass CR. Efficacy of continuously administered PEDF-derived synthetic peptides against osteosarcoma growth and metastasis. *J Biomed Biotechnol*. 2012;2012:230298.
  17. Park K, Lee K, Zhang B, Zhou T, He X, Gao G, *et al*. Identification of a novel inhibitor of the canonical Wnt pathway. *Mol Cell Biol*. 2011;31(14):3038-51.
  18. Notari L, Baladron V, Aroca-Aguilar JD, Balko N, Heredia R, Meyer C, *et al*. Identification of a lipase-linked cell membrane receptor for pigment epithelium-derived factor. *J Biol Chem*. 2006;281(49):38022-37.