

RESEARCH ARTICLE

Novel polyclonal antibody-based rapid gold sandwich immunochromatographic strip for detecting the major royal jelly protein 1 (MRJP1) in honey

Yifan Zhang¹, Yong Chen¹, Yiting Cai¹, Zongyan Cui², Jinjie Zhang², Xiaohou Wang¹, Lirong Shen^{1*}

1 Department of Food Science and Nutrition, Zhejiang Key Laboratory for Agro-Food Processing, Zhejiang University, Hangzhou, Zhejiang, China, **2** Qinhuangdao Entry–Exit Inspection and Quarantine Bureau, Qinhuangdao, Hebei, China

* shenlirong@zju.edu.cn



OPEN ACCESS

Citation: Zhang Y, Chen Y, Cai Y, Cui Z, Zhang J, Wang X, et al. (2019) Novel polyclonal antibody-based rapid gold sandwich immunochromatographic strip for detecting the major royal jelly protein 1 (MRJP1) in honey. *PLoS ONE* 14(2): e0212335. <https://doi.org/10.1371/journal.pone.0212335>

Editor: Amitava Mukherjee, VIT University, INDIA

Received: August 12, 2018

Accepted: January 31, 2019

Published: February 19, 2019

Copyright: © 2019 Zhang et al. This is an open access article distributed under the terms of the [Creative Commons Attribution License](https://creativecommons.org/licenses/by/4.0/), which permits unrestricted use, distribution, and reproduction in any medium, provided the original author and source are credited.

Data Availability Statement: All relevant data are within the manuscript and its Supporting Information files.

Funding: This work was supported by the Science and Technology Project of Zhejiang Province (No. 2017C32033) and the National Key Research and Development Program of China (No. 2017YFC1601700). The funders had no role in study design, data collection and analysis, decision to publish, or preparation of the manuscript.

Abstract

Honey adulteration is becoming increasingly alarming incidents in food safety. Monitoring and detecting adulteration face greater challenges. Honey contains the major royal jelly proteins (MRJP) secreted by bee workers. To detect honey adulteration fast and accurately, a rapid gold sandwich immunochromatographic strip (GSIS) was developed based on two specific polyclonal antibodies (PoAbs) against the MRJP1, the most abundant protein of all MRJPs. We determined the best of pH value (pH 8.6) and PoAb SP-1 amount (5 µg/mL) in conjunction with colloidal. The cut-off value (sensitivity) of GSIS in detecting MRJP1 is 2.0 µg/mL in solution. Validation analysis with RJ, milk vetch honey, acacia honey and honey adulteration containing rice syrup and corn syrup with different ratios demonstrated that the GSIS could show consistent Test line (T line) when the test samples contain more than 30% pure honey or MRJP1 0.4 mg/g. The validation results by isotope ratio mass spectrometry on the same pure and all adulteration milk vetch honey samples showed the same information of GSIS test. The qualitative assay GSIS provided a valuable new way for honey authenticity and laid the foundation for the future application of GSIS with monoclonal antibodies in honey authentication.

Introduction

Honey is produced by honeybees from the nectar of plants or honeydew secretions of plants combined with their own secretions. It is mainly composed of sugar, mainly fructose and glucose, organic acids, amino acids, proteins, minerals, and other phyto-chemicals [1]. In addition, the composition of honey depends on its geographical and botanical origins. Moreover, honey exhibit a wide range of nutritional and biological effects such as antibacterial property, antioxidant property, antimutagenic property, anti-inflammatory and healing property, etc [2]. As a nutrient-rich natural sweetener and healthcare product, honey is one of the global

Competing interests: The authors have declared that no competing interests exist.

Abbreviations: BSA, bovine serum albumin; C line, Control line; CB, carbonatebicarbonate buffer; CGIS, colloidal gold immunochromatographic strip; EA-IRMS, isotope ratio mass spectrometry; ELISA, enzyme-linked immunosorbent assay; GNPs, colloidal gold nanoparticles; GSIS, gold sandwich immunochromatographic strip; HRP, horseradish peroxidase; IS, immunochromatographic Strip; MRJPs, major RJ proteins; OD, optical density; PBS, phosphate buffered saline; PBST, PBS with 0.05% (v/v) Tween-20; PDB, Pee Dee Belemnite; PEG 2000, polyethylene glycol 2000; PI, protein isoelectric point; PoAbs, polyclonal antibodies; PVA, polyvinyl alcohol; PVC, polyvinyl chloride; PVP, polyvinyl pyrrolidone; RJ, royal jelly; T line, test line; TMB, 3, 3', 5, 5'-tetramethylbenzidine.

avored foodstuffs. However, honey is easily adulterated in the practice by cheaper, commercially available sugar syrups with similar composition because of its composition (mainly carbohydrates and water) [3]. Economically motivated adulteration of honey has widely affected global honey producers, retailers, consumers and regulatory authorities [2].

Many detection methods have been developed and used to identify adulteration of honey in recent decades. These include high-performance liquid chromatography (HPLC) [4], gas chromatography–mass spectrometry (GC-MS) [5], near-infrared (NIR) spectroscopy [6], Fourier transform infrared (FTIR) spectroscopy [7], electronic tongue [8], fluorescence spectroscopy [9], Raman spectroscopy [10], high-resolution nuclear magnetic resonance (HR-NMR) [11], and isotope ratio mass spectrometry (IRMS) [12], pollen identification [13], stable carbon isotope ratio method [14], etc. However, detection methodology of adulteration lagging behind adulteration technology has made us to rethink of conventional strategy. Over the past 20 years, the advances in mass spectrometry, high flux antibodies, and bioinformatics and biostatistics algorithm biomarkers based on genomics, proteomics, and metabolomics have been developed and applied in detection of honey adulteration [15]. Biomarkers, such as DNA and proteins have been identified and used to determine adulteration and floral sources of honey [16–17].

Traditional methods of honey authenticity have failed for two main reasons. First, it takes time to develop new detection technology against adulteration when a new adulteration method is known. This situation creates a “window-blank period” for monitoring honey adulteration and results in an early warning and effective control of new adulterated technologies could not be provided in time. During this “window period”, the risk of food safety caused by honey adulteration to consumers will increase drastically. Secondly, the cost of monitoring and controlling adulteration is too high. To some extent, modern analytical techniques can effectively identify the authenticity of honey, which is beneficial to the quality control of honey [2, 8]. However, there were shortcomings such as expensive instruments and equipment, complex operation techniques, long testing time, professional background, and fixed operation sites for existing analysis technologies. At the same time, a single technology has limited detection range, which cannot guarantee the accuracy of the results. It is necessary to analyze the cross-examination of chemistry, organic chemistry, biology, pop analysis and other disciplines to determine the authenticity of honey accurately [3, 18]. As the existing identification and analysis technology lag behind the adulteration technology, it is difficult to eliminate honey adulteration completely. Therefore, the development of a new honey adulteration detection technology should change strategy from the past, to determine "if the sample contains adulteration" to "what the sample contains," The trend of authenticity test is increasingly recognized in the analytical methods of honey [19]. In fact, the ideal method of honey identification is accurate, fast, convenient and inexpensive, without professional technical training. In view of existing defects for honey identification technology, it is essential to change strategies from aiming exogenous substances added to the honey mainly to focusing on the honey authenticity unique composition from now on.

Honey contains 1–2% protein. Although major royal jelly proteins (MRJP) are found in the royal jelly (RJ) secreted from salivary glands of worker bees at high concentrations, it is also present in honey at a low concentration [20]. MRJP family is composed of nine members: MRJP1 to MRJP9. Mass spectrometric analysis showed that honey contained MRJP1, MRJP2, MRJP5, and MRJP7. MRJP1 is the most abundant protein in honey [1]. According to its stability and immune characteristics in honey, it is feasible to use MRJP1 as the honey endogenous biomarker for honey quality. In recent years, we have constructed a fast ELISA method to determine the RJ freshness with a specific antibody of MRJP1 [21–22], which provided the

foundation to develop a new way to detect MRJP1 in honey. ELISA is a simple, specific, and cost-effective method to detect MRJP1, but it is time-consuming and unstable procedure [23].

The colloidal gold immunochromatographic strip (CGIS) assay is a rapid, reliable, easy, economical and instrument-free analytical method. CGIS has been widely used in detecting residues of pesticides and veterinary drugs, biological and chemical contaminants in food products, medical diagnosis, etc. In comparison with typical chromatography, CGIS has been confirmed as an alternative for measurement of detection target such pesticides by virtue of its high selectivity, sensitivity, and reliability as well as its speed, which enables detection visually within a few minutes [24]. Based on our previous ELISA method to detect RJ freshness [22], CGIS assay which determines the authenticity by detecting internal biomarker MRJP1 in honey was developed in this study.

Materials and methods

Materials

Chemical materials. Bovine serum albumin (BSA), polyvinyl pyrrolidone (PVP), polyethylene glycol 2000 (PEG 2000), and polyvinyl alcohol (PVA) were purchased from Aladdin Chemistry Co., Ltd. (Shanghai, China), and 3,3',5,5'-tetramethylbenzidine (TMB), enzyme immunoassay grade horseradish peroxidase (HRP)-labeled goat anti-rabbit immunoglobulin were purchased from Beyotime Biotechnology Co., Ltd (Hangzhou, China). Other chemicals were from the National Pharmaceutical Group Chemical Reagent Co., Ltd. (Shanghai, China). All biochemical reagents were of highest purity and commercially available. Nitrocellulose (NC) membrane (pore size = 5–8 μm) was provided by Sartorius (Germany). Sample pad and adsorbent pad were the products of Millipore (USA). Semirigid polyvinyl chloride (PVC) sheets with adhesive tape were purchased from a local market. The reference standard, olive oil ($\%C = 57.00$, $\delta^{13}C_{\text{PDB}} = -29.07\text{‰}$), which was re-certified by the National Research Center for Certified Reference Materials (China), copper oxide (0.7 mm), copper (0.7 mm reduced), chromium oxide (granular), magnesium perchlorate (granular), silver wool and quartz wool were purchased from PDZ Europa (Cheshire, UK). Reagent grade sulfuric acid and analytical grade sodium tungstate ($\text{Na}_2\text{WO}_4 \cdot 2\text{H}_2\text{O}$) were purchased from Beijing Chemical Ltd (China). The helium carrier gas, auxiliary combustion gas and oxygen were 99.999% pure.

Pure natural milk vetch honey (floral source: *Astragalus sinicus* L.) was provided by Nanchang Tongxin Zichao Biological Engineering Co., Ltd. (Nanchang, China. It was produced in December, 2014). Pure natural acacia honey (floral source: *Robinia pseudoacacia* Linn. It was produced in November, 2014) and fresh RJ were provided by Hangzhou Biyutian Health Food, Co., Ltd. (Hangzhou, China). All honey samples were stored at 4°C in refrigerator. Fresh RJ was stored at -80°C until use. MRJPs were extracted from fresh diluted in phosphate buffered saline (PBS) by centrifugation at 12,000 \times g for 30 min under 4°C, then dialyzed against 500 volumes of ddH₂O via distilled by using a 1000 Da cut-off dialysis membrane under 4°C [25]. The concentration of MRJPs was determined by Bradford using bovine serum albumin as standard. MRJP1 was prepared with ultracentrifugation method from RJ as previously described [26].

Buffer solutions. The following solutions were used: 0.05 M sodium carbonatebicarbonate buffer (CB, pH 9.6); 0.05 M sodium CB buffer containing 0.2% (w/v) gelatin as blocking buffer; 0.01 M PBS (pH 7.4); 0.01 M PBS containing 0.05% (v/v) Tween-20 (PBST, pH 7.4) as washing buffer; 0.01 M PBS containing 0.1% (w/v) gelatin as an antibody dilution buffer; 0.01 M PBS containing 5% (w/v) skim milk powder as blocking buffer; and 2 M H₂SO₄ [10%(w/v)] as stop reagent.

Preparation and purification of PoAbs against MRJP1. The oligopeptides I-SGEY-DYKNNYPSDID (P1) and 2-IKEALPHVPIFD (P2) were selected by homology analysis of nine MRJP family sequences from GenBank web (<http://www.ncbi.nlm.nih.gov>) by using Genetyx-Win Version 5 (Software Development Co., Tokyo, Japan) [22], and synthesized using the AMS 422 robot (ABIMED GmbH, Langenfeld, Germany) by China Peptides Co., Ltd., respectively (Bradford, 1976). P1 and P2 were prepared into specific PoAbs, SP-1 and SP-2 against MRJP1. The sensitivity and specificity of SP-1 and SP-2 were measured by using indirect ELISA [22]. Then, by labeling with horseradish peroxidases (HRP), SP-1 was prepared into detecting antibody, HRP-SP-1. SP-2 was used as the capture antibody in a newly established sandwich ELISA for honey.

Standard solutions preparation. The MRJP1 standard was dissolved in PBS (1 M, pH 7.4) to give the stock solution (1 mg/mL). Then the stock solution was serially diluted with PBS to give the working standard solutions.

Titer determination of PoAbs against MRJP1

Indirect ELISA was used for determining the titer of both antibodies SP-1 and SP-2 according to the method of Anuracpreeda [27]. Briefly, a 96-well microtiter plate (Costar, America) was coated with 100 μ l of 1 μ g/ml of MRJP1 from RJ diluted in coating buffer, and incubated at 4°C overnight. The coated plate was washed three times with PBST, and the washing fluid was left in the wells for nearly 1 min each time. Afterward, the plate was blocked with 200 μ l/well of blocking solution in 0.01 M PBS (pH 7.4) at 37°C for 1.5 h. Next the plate was washed with 0.01 M PBST; and 100 μ l of diluted SP-1 or SP-2 at 1:1250, 1:2500, 1:5000, 1:10000, 1:20000, 1:40000 and 1:80000 were added and incubated at 37°C for 1 h, respectively. The blank rabbit serum (the control) was used as the negative control at 1:1000. After being washed with 0.01 M PBST, the plate was incubated with 100 μ l/well of HRP-labeled goat anti-rabbit immunoglobulin, at 1:250 dilution in the 0.01 M PBS (pH 7.4) at 37°C for 30 min. Then the plate was washed with PBST as previously described, and the color development was generated by attaching 200 μ l/well of TMB substrate. The enzymatic reaction was released to take place at 37°C for 15 min in dark. Finally, the enzymatic reaction was stopped by addition of 50 μ l stop reagent. The optical density (OD) value at 450 nm and 630 nm was measured using a Multiskan MK microplate reader (Thermo Fisher, Shanghai, China).

Preparation and identification of colloidal gold nanoparticles (GNPs)

In the selection of colloidal gold particle size, 40 nm colloidal gold was the optimal particle size for most diagnostic applications, taking into account the balance between the required visibility and steric hindrance [28–29]. GNPs were synthesized with the sodium citrate reduction method [30]. Firstly, 1 mL 1% (w/v) HAuCl₄·4H₂O was added to 100 mL ultrapure water in a magnetic stirring reflux device, and heated to boiling. Then, the freshly prepared 1% (w/v) trisodium citrate solution (1 mL) was rapidly added. The solution color changed from colorless to wine red within 8 min. The resulting GNPs were stored at 4°C and characterized by transmission electron microscopy and UV-vis after the mixture cooled to room temperature.

Optimization of pH and PoAb SP-1 content for the sandwich immunoassay

The best binding force of colloidal gold and protein is obtained under the condition of protein isoelectric point (PI). The pH value of the colloidal gold solution was adjusted to 3, 4, 5, 6, 7, 8, 9, 10; 3 μ L SP-1 (1 mg/mL) was added to 100 μ L colloidal gold solution with different pH values, mixed in the plate. 20 μ L 10% (w/v) NaCl was added after 15 min. The colloidal gold color change observed and the minimum pH (X) of the mixture for keeping the red was recorded

within 10 min. The pH value of the gold solution was adjusted to X-0.6, X-0.3, X, X+0.3, X+0.6, X+1, respectively, then the above steps were repeated. The results were observed after incubation for 2 h. The amount of SP-1 protein in conjunction with colloidal gold was optimized as well. 0, 1, 2, 3, 4, 5, 6 μL SP-1 solutions (1 mg/mL) were added to a 1 mL centrifuge tube with colloidal gold solution (pH 8.6), respectively. After 15 min, 100 μL NaCl solution [10% (w/v)] was added to each tube and mixed well. The results were observed after 2 h.

GNP-labeled PoAb

The GNP solution was adjusted to pH 8.6 with 0.1 M K_2CO_3 before PoAb was labeled. Then, 0.4 mg PoAb (5 $\mu\text{g}/\text{mL}$) in 0.01 M PBS at pH 8.6 was added drop-wise into 4 mL GNP solution and bred at room temperature for 1 h for conjugation. To block the gold nanoparticles, 4 mL 0.5% BSA (w/v) and 0.01% PEG 2000 (w/v) was slowly added into the solution to stabilize the labeled PoAb. After incubation for 1 h, the solution was centrifuged at 10000 r/min for 30 min, and the precipitate was dissolved with 0.01 M PBS (containing 1% BSA, and 0.01% PEG 2000, pH 8.6), then the solution was centrifuged at 10000 r/min for 30 min again. The precipitate was resuspended with 0.01 M PBS (containing 1% BSA, and 5% sucrose, pH 8.6) and stored under 4 °C after repeating the above operation twice, and finally [30].

The compound of the immunochromatographic strip (IS)

The IS was assembled layer by layer with a sample pad, NC membrane, PVC sheet, and absorption pad. Different proteins were sprayed onto the NC membrane at 0.05 $\mu\text{L}/\text{mm}$ by using a membrane dispenser machine (IsoFlow, USA), and dried under room temperature. SP-2 was sprayed on the test zone to capture object protein in the samples, and goat anti-rabbit IgG was sprayed on the control zone for quality control. These strips were sealed in plastic bags containing desiccant and stored in a clean desiccator under 4 °C until required. The test strip consists of a plastic backing plate on which the NC membrane, sample pad, and absorbent pad are pasted. After assembly of each component, the whole assembled plate was cut into lengthways and divided into strips with a guillotine cutter (3×60 mm) [31].

Application of strip detection

Before detection, 8 μL GNP-labeled SP-1 was added to the sample pad for testing. Then the strip pad has to be immersed in the test solution (100 μL) when detection. The strip surface must be lower than the sample pad, allowing the sample to migrate upward. After 10 min, the testing result could be checked.

Handling of honey samples

100 g of each honey sample was diluted with pure water (1:1), mixed evenly and extracted overnight at 4 °C. The supernatant was harvested after the honey solution was centrifuged at 12,000×g for 30 min under 4 °C. Then the extract from honey water extract was dialyzed against 500 volumes of ddH₂O via distilled by using a 1000 Da cut off dialysis membrane under 4 °C.

Detection of honey adulteration with strip detection

Milk vetch honey was mixed with corn syrup and rice syrup with following mass ratios, 10: 0, 7: 3, 5: 5, 3: 7, 0: 10, respectively. The MRJP1 contents in all milk vetch honey mixture and pure Acacia honey were detected by ELISA with SP1 as antibody against MRJP1 according to our previous report [22]. All mixtures were treated as above. 80–100 μL sample solution was

added to each well of 96-well plate. Then, the strips were dipped into the sample solution and taken out for 8–10 min to observe the result. If both the test (T) and control (C) lines showed a red mark, the samples were recorded as positive indicating the presence of MRJP1. On the contrary, if the C line but not T line showed a red mark, the sample is considered as negative. The strip test was invalid when there was no red mark in the control region.

Determination of honey adulteration by elementary analysis-isotope ratio mass spectrometry (EA-IRMS)

EA-IRMS determination was performed according to AOAC method 998.12 [32] and previous report [33] with a little modification. EA-IRMS (Integra-CN stable carbon and nitrogen isotope analyser) and tin capsules (8 mm × 5 mm) were purchased from PDZ Europa. For honey samples, 3 μL of original honey sample was pipetted into a tin capsule. For honey protein samples, 20–25 g of honey sample was mixed well with 5 mL of water in a 50 mL centrifuge tube. Then 2 mL of 100 g/L sodium tungstate solution and 2 mL of 0.335 mol/L sulfuric acid solution were mixed well in a 20 mL measuring cylinder, added to the centrifuge tube containing the honey sample and again mixed well. The centrifuge tube was subsequently placed in an 80 °C water bath for at least 30 min until a visible protein floc had formed, with the tube being swirled for 20 s at 5–10 min intervals during the heating process. Then 30 mL of water was mixed with the contents of the centrifuge tube, the tube was centrifuged for 5 min at 1500 × g and the supernatant was decanted. A further 50 mL of water was added to the centrifuge tube to wash the precipitated protein, the tube was centrifuged for 5 min at 1500 × g and the supernatant was decanted; this procedure was repeated five times. The centrifuge tube containing the precipitated protein was then dried in an oven at 75 °C for at least 3 h. A 3 mg sample of dried protein was weighed into a tin capsule. For reference, 2 μL (for honey samples) or 1 μL (for protein samples) of olive oil was pipetted into a tin capsule for use as the standard control sample.

All $\delta^{13}\text{C}$ values are related to the Pee Dee Belemnite (PDB) carbonate standard as follows: $\delta^{13}\text{C}(\text{‰}) = [(R_s/R_{\text{ref}}) - 1] \times 1000$ where R_s and R_{ref} are the $^{13}\text{C}/^{12}\text{C}$ isotopic ratios of the sample and the analytical reference standard respectively.

Calculate apparent C-4 sugar content as follows:

$$C - 4 \text{ sugar, \%} = \frac{\delta^{13} C_p - \delta^{13} C_H}{\delta^{13} C_p - (-9.7)} \times 100$$

where $\delta^{13}\text{C}_p$ and $\delta^{13}\text{C}_H$ are $\delta^{13}\text{C}$ values, ‰, for protein and honey, respectively, and -9.7 is the average $\delta^{13}\text{C}$ value for corn syrup, ‰. Report negative values from this calculation as 0%. Product is considered to contain significant C-4 sugar (primarily corn or cane) only at or above a value of 7%.

Results

Binding activities of PoAbs

The results estimated by using an ELISA method in Table 1 illustrate the binding activities of both antibodies, SP-1 and SP-2, respectively. The OD values of both antibody at 80000-fold dilution were 6.73 and 7.71 times that of the unimmunized rabbit serum (OD at 1000-fold dilution), respectively. This suggests that both antibodies possess very high binding activities to MRJP1, indicating they met the standard of titer for immunological experiments.

Table 1. The titer of the PoAbs.

| PoAb | Dilution ratio | A ₄₅₀ -A ₆₃₀ value | P/N value* |
|------|------------------|--|------------|
| SP-1 | 1250 | 1.5263±0.1197 ^{as} | 14.09 |
| | 2500 | 1.4983±0.3085 ^{ab} | 13.83 |
| | 5000 | 1.255±0.0862 ^{abc} | 11.59 |
| | 10000 | 1.1047±0.0647 ^{bcd} | 10.20 |
| | 20000 | 1.021±0.1026 ^{cd} | 9.43 |
| | 40000 | 0.8773±0.0702 ^{cd} | 8.10 |
| | 80000 | 0.7293±0.1401 ^d | 6.73 |
| | Negative control | 0.1083±0.0285 ^e | - |
| SP-2 | 1250 | 1.424±0.2894 ^a | 20.73 |
| | 2500 | 1.387±0.0874 ^a | 20.19 |
| | 5000 | 1.381±0.3611 ^a | 20.10 |
| | 10000 | 1.144±0.0674 ^{ab} | 16.65 |
| | 20000 | 1.059±0.4256 ^{ab} | 15.41 |
| | 40000 | 0.887±0.3258 ^{ab} | 12.91 |
| | 80000 | 0.530±0.0845 ^{bc} | 7.71 |
| | Negative control | 0.069±0.0330 ^c | - |

*P/N value, the positive/negative value, which was the ratio of the optical density value of the testing sample to the negative control sample. Values were calculated according to the formula $P/N > 2.1$. (+) means positive and (-) means negative. ($p < 0.01$)

^{a-c} the significance of the difference between the data, the significant level $\alpha = 0.05$. The numbers to be compared have the same letter as the difference is not significant, and the data without the same letter is considered to be significantly different.

<https://doi.org/10.1371/journal.pone.0212335.t001>

Standardization of ELISA with both antibodies

Based on ELISA with both antibodies, we generated the calibration curves: $y = 0.1528x + 1.4232$ ($R^2 = 0.996$) for MRJP1 (Fig 1) in a concentration ranging from 2 to 10 $\mu\text{g}/\text{mL}$ of MRJP1 in PBS.

Measurement of colloidal gold particles

In this experiment, transmission electron microscopy showed that the diameter of the colloidal gold particles was 35–45 nm (Fig 2A). The visible spectrum (Fig 2B) showed that it had the

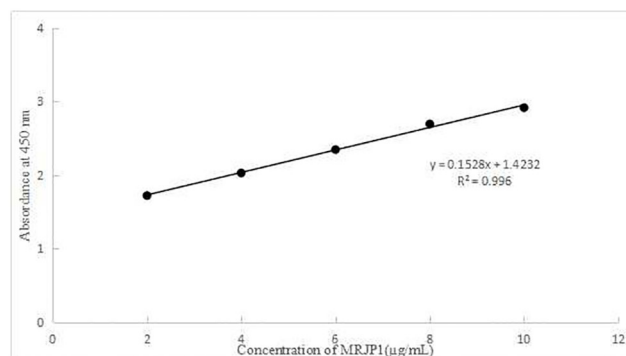


Fig 1. Standard curve of the MRJP1.

<https://doi.org/10.1371/journal.pone.0212335.g001>

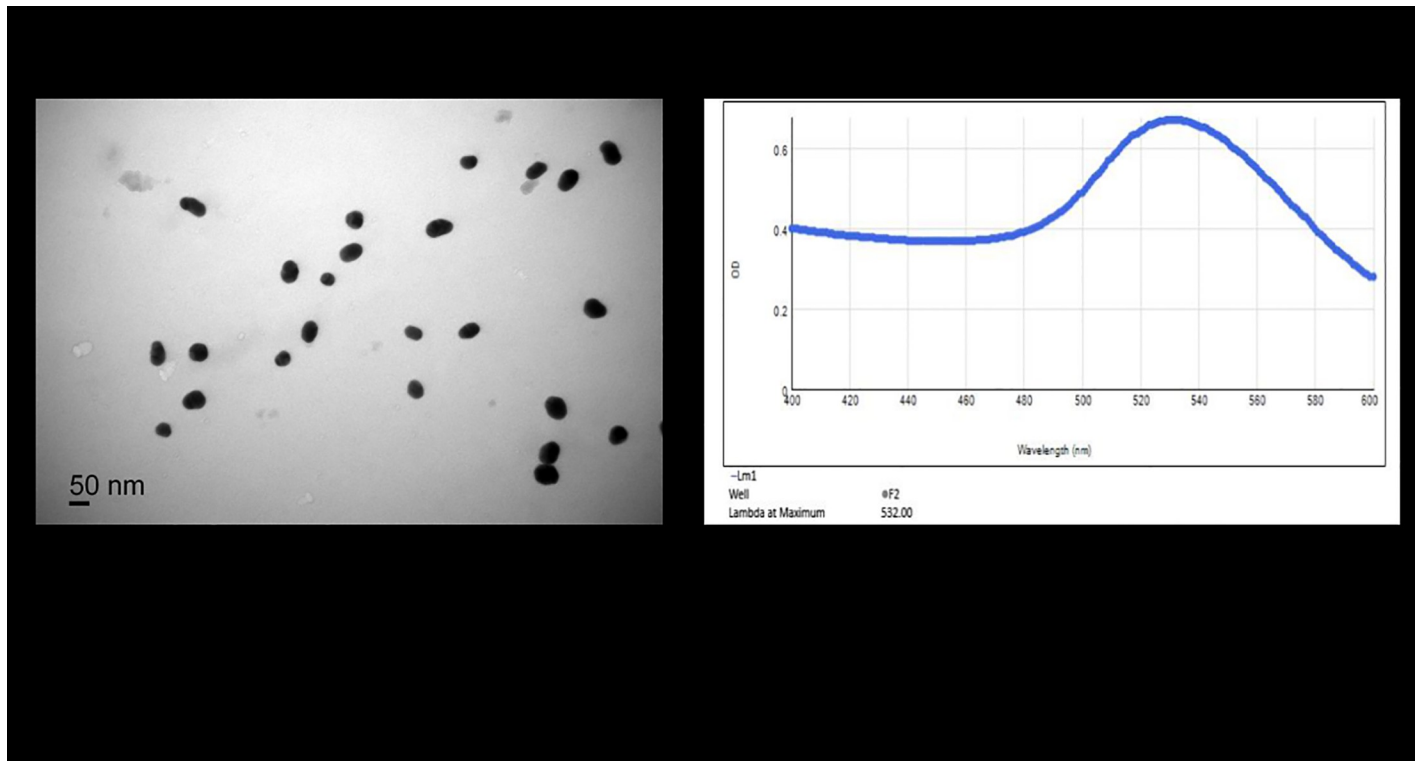


Fig 2. Transmission electron micrograph(A) and visible spectrum (B) of the colloidal gold.

<https://doi.org/10.1371/journal.pone.0212335.g002>

maximum at 532 nm. The absorbance gives the colloidal gold solution an average particle size distribution of about 41 nm. Although the particle size distribution and peak width observed during transmission electron microscopy were not particularly satisfactory, it was combined with the optimal amount of PoAbs, the colloidal gold was stable. It was demonstrated that the colloidal gold particles in this experiment met the requirements of 40 nm colloidal gold experiment.

Optimization of pH and PoAb concentration

The optimization of pH value to detect the presence of MRJP1 is the lowest pH value of the well that stays red. The primary measurement results (Fig 3A) of pH, 3, 4, 5, 6, 7, 8, 9 showed the optimization of pH value in conjunction with colloidal gold was (pH)X = 8. In accordance with this measurement, the range of pH from 8 to 9 was considered the optimum value based on the initial determination. Further measurement results under the pH gradients, 7.4, 7.7, 8, 8.3, 8.6, 9.0 showed that the pH values staying red were 8.3, 8.6 and 9.0 (Fig 3B). Finally, pH 8.6 was considered as the best pH value for the protein is positively charged and is more stable for the binding, because the pH value of the colloidal gold should be slightly higher than the pI of the actual colloidal gold probe in preparation.

In order to determine the optimal amount of PoAb SP-1 used in conjunction with colloidal gold, seven different concentrations of SP-1 solutions were made by adding 0 to 6 μ L of SP-1 (1 mg/mL) solution to 1 mL colloidal gold solution (pH = 8.6) separately (Fig 3C). It was shown that the colloidal gold in the tube without protein and protein deficiency is unstable, which resulted in poly sink phenomenon and color changing from red to purple. When the

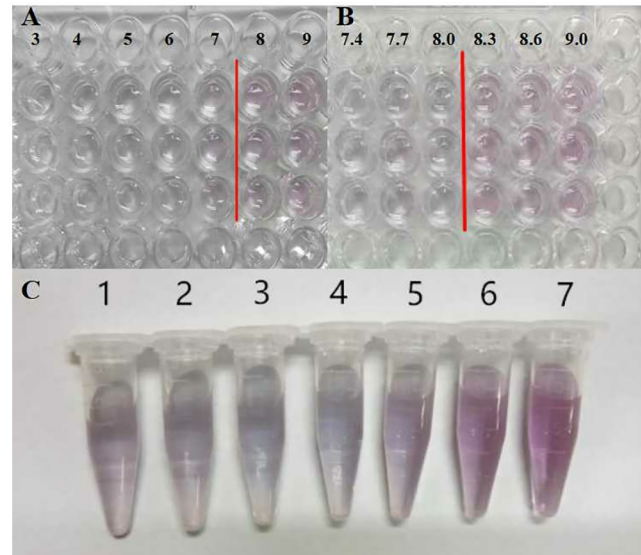


Fig 3. Optimal conditions. (A) Optimization of pH value in conjunction with colloidal gold. pH values from left to right are 3, 4, 5, 6, 7, 8, 9, respectively; (B) pH values from left to right are 7.4, 7.7, 8.0, 8.3, 8.6, 9.0, respectively; (C) The Optimization amount of SP-1 in conjunction with colloidal gold.

<https://doi.org/10.1371/journal.pone.0212335.g003>

SP-1 content reaches or exceeds the minimum stable quantity, the colloidal gold becomes stable and the red color remains unchanged. We found that the solution color in tube 5 was the closest to the color of the standard colloidal gold solution. Also in general, the amount of protein should be slightly more than that of the amount in conjunction with the colloidal gold. Thus, the optimized amount of SP-1 is 5 μg .

The lowest detection limit and the specificity of GSIS

Fig 4A showed that C line appeared on the strip testing MRJP1 protein standard solution, indicating the strips were effective. Then, a series of MRJP1 standards (2, 4, 6, 8, 10 $\mu\text{g}/\text{mL}$ in 0.01 M PBS) and a blank control with 0.01 M PBS were tested by using IS. Fig 4B showed that the colors of the C line and the T line were illegible when the MRJP1 concentration of test solution was below 2 $\mu\text{g}/\text{mL}$, but legible with increasing of MRJP1 concentration from 2 to 10 $\mu\text{g}/\text{mL}$ in the test solution. The result suggested that the cut-off value for the strips to detect MRJP1 is 2 $\mu\text{g}/\text{mL}$.

Detection of MRJP1 contents in pure honey and honey adulteration by ELISA. The data in Table 2 showed that the MRJP1 contents of different honey samples obtained by ELISA. The MRJP1 contents of pure milk vetch honey and acacia honey contained was 1.32 ± 0.11 mg/g. The MRJP1 contents in various honey adulteration with rice syrup or corn syrup 70%, 50%, 70% and 100% were 0.9, 0.6, 0.4 and 0.02~0.4 mg/g, respectively.

Sample analysis of the strip

Fig 4C showed the detection results for the strip of different test samples. The C line appeared on all strips contacted RJ, milk vetch honey and acacia honey, respectively, indicating the validity of the strip. The appearance of T line on strips clearly demonstrated that the test sample contains MRJP1.

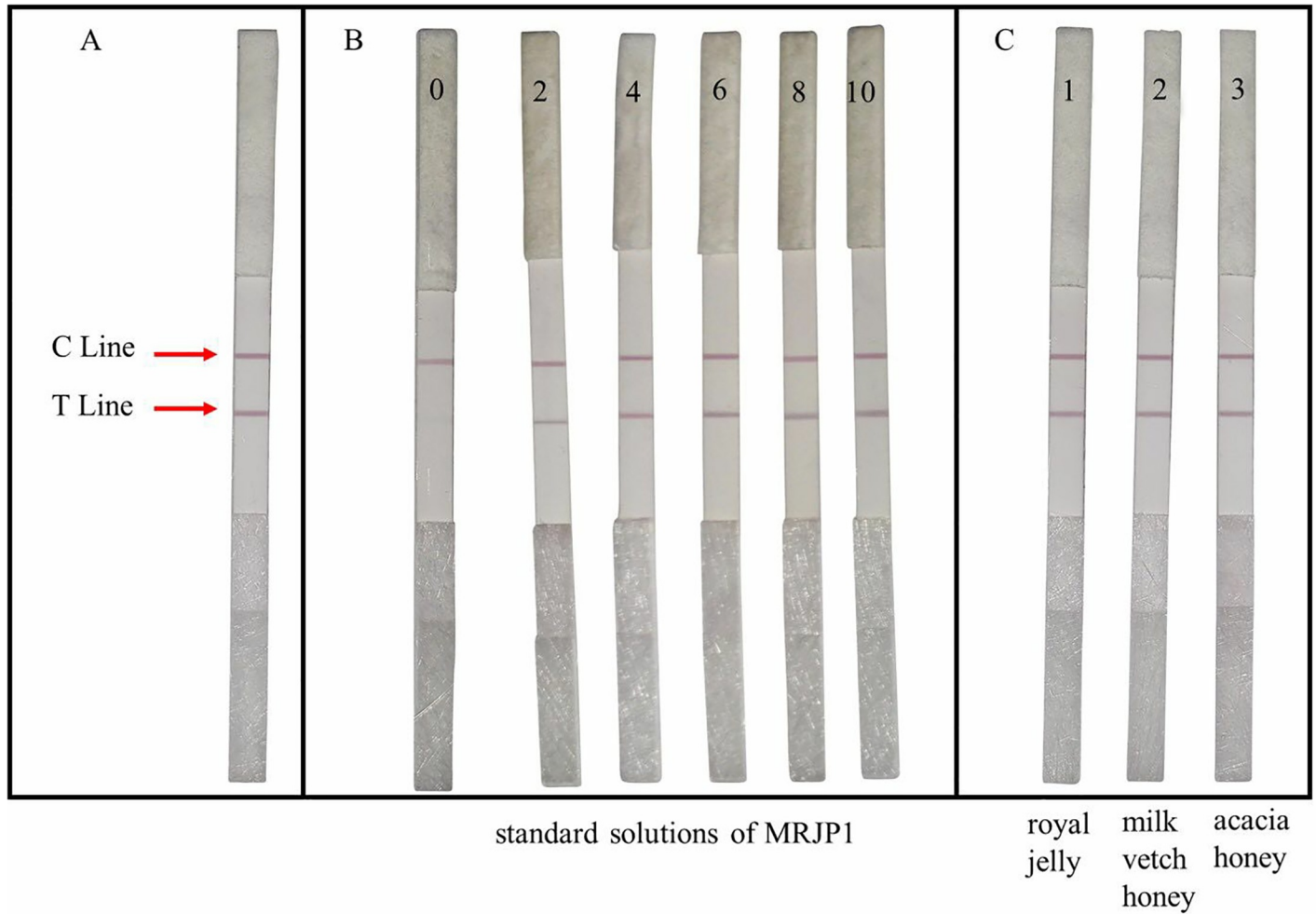


Fig 4. The lowest detection limit and the specificity of IC strip test. (A) Performance tests of the colloidal gold immunochromatographic strips; (B) Standard solutions of MRJP1 at each concentration of 0, 2, 4, 6, 8 and 10 µg/mL were tested; (C) The detection of MRJP1 by using the immunochromatographic strip. (1) royal jelly; (2) milk vetch honey; (3) acacia honey.

<https://doi.org/10.1371/journal.pone.0212335.g004>

Detection of honey adulteration with GSIS

The test results of the milk vetch honey adulteration experiment were shown in Fig 5. All strips treated with honey adulteration samples containing corn syrup [Fig 5A(1)–5A(4)] and rice

Table 2. The MRJP1 contents in pure honey and honey adulteration by ELISA.

| No. | Milk vetch honey/% | Rice syrup/% | Corn syrup/% | Portion of adulteration/% | The content of MRJP1 (mg/g) |
|-----|--------------------|--------------|--------------|---------------------------|-----------------------------|
| 1 | 100 | | | 0 | 1.32±0.11 |
| 2 | 70 | 30 | | 30 | 0.91±0.17 |
| 3 | 50 | 50 | | 50 | 0.64±0.06 |
| 4 | 30 | 70 | | 70 | 0.42±0.11 |
| 5 | | 100 | | 100 | 0.04±0.04 |
| 6 | 70 | | 30 | 30 | 0.92±0.05 |
| 7 | 50 | | 50 | 50 | 0.63±0.04 |
| 8 | 30 | | 70 | 70 | 0.40±0.06 |
| 9 | | | 100 | 100 | 0.02±0.03 |

<https://doi.org/10.1371/journal.pone.0212335.t002>

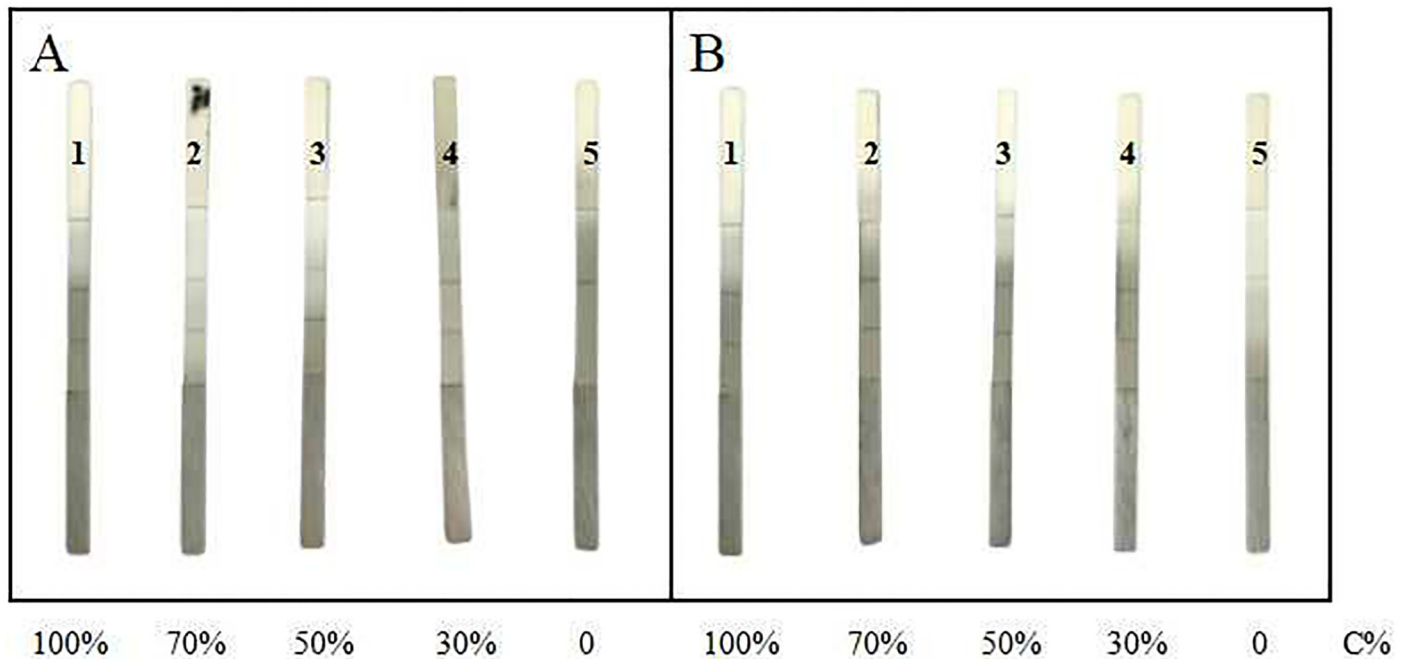


Fig 5. The detection of adulterated milk vetch honey by using the immunochromatographic strip. A: (1) milk vetch honey (honey concentration 100%); (2) milk vetch honey: corn syrup = 7:3 (honey concentration 70%); (3) milk vetch honey: corn syrup = 5:5 (honey concentration 50%); (4) milk vetch honey: corn syrup = 3:7 (honey concentration 30%); (5) corn syrup (honey concentration 0); B: (1) milk vetch honey (honey concentration 100%); (2) milk vetch honey: rice syrup = 7:3 (honey concentration 70%); (3) milk vetch honey: rice syrup = 5:5 (honey concentration 50%); (4) milk vetch honey: rice syrup = 3:7 (honey concentration 30%); (5) rice syrup (honey concentration 0).

<https://doi.org/10.1371/journal.pone.0212335.g005>

syrup [Fig 5B(1)–5B(4)] showed positive results. However, the colors of both C line and T line were stable when the honey concentration in test solution was higher than 30%, or the MRJP1 content in solution was more than 0.4 mg/g (Table 2), the T line becomes illegible when the honey concentration was lower than 30%, suggesting that high honey concentration strongly influenced the movement of gold-labeled antibody on NC membrane and lead to a false positive.

Detection of honey adulteration by EA-IRMS

To validate the sensitivity and reliability of GSIS test set by us, pure natural milk vetch honey, the same honey adulteration samples containing corn syrup and rice syrup used as above was detected by EA-IRMS. The judged results according to C-4 sugar/% (Table 3) showed the same information as GSIS tests. The C-4 sugar contents of samples containing more than 30% rice syrup and corn syrup were higher than 11.53% and 32.33%, respectively, and the value above 7% was judged to be adulterated honey. The EA-IRMS test results are basically matched with the GSIS test results. However, when there is only pure syrup, such as rice or corn syrup of the sample in this experiment, EA-IRMS can not show whether the sample contains C-4 sugar, that is, it is not intuitive to judge whether the sample is adulterated or fake honey. There are limitations compared to the strip detection method.

Discussion

The assay, lateral-flow immunochromatography strip methods were established by using two PoAbs, SP-1 and SP-2 on the basis of ELISA detection. The method could detect MRJP1 in

Table 3. Detection of pure honey and honey adulteration by EA-IRMS.

| No. | Milk vetch honey/% | Rice syrup/% | Corn syrup/% | Portion of adulteration/% | $\delta^{13}C_H$ | $\delta^{13}C_P$ | C-4 sugar/%** | Indication of adulteration |
|-----|--------------------|--------------|--------------|---------------------------|------------------|------------------|---------------|----------------------------|
| 1 | 100 | | | 0 | -23.57 | -24.33 | 5.19 | No |
| 2 | 70 | 30 | | 30 | -24.20 | -26.09 | 11.53 | Yes |
| 3 | 50 | 50 | | 50 | -24.98 | -27.15 | 12.44 | Yes |
| 4 | 30 | 70 | | 70 | -25.72 | -28.39 | 14.29 | Yes |
| 5 | | 100 | | 100 | -26.52 | / ^a | / | / |
| 6 | 70 | | 30 | 30 | -19.63 | -24.35 | 32.33 | Yes |
| 7 | 50 | | 50 | 50 | -19.51 | -24.46 | 33.54 | Yes |
| 8 | 30 | | 70 | 70 | -15.20 | -23.62 | 60.49 | Yes |
| 9 | | | 100 | 100 | -10.44 | / | / | / |

^a No protein, indicating adulteration.

**C-4 sugar/%, the C-4 sugar/% of honey sample above 7% is judged as adulteration [32].

<https://doi.org/10.1371/journal.pone.0212335.t003>

honey samples. The best of pH value (pH 8.6) and PoAb SP-1 amount (5 µg/mL) in conjunction with colloidal were determined, respectively. The color test of the MRJP1 standard sample was sensitive and the cut-off value (sensitivity) of GSIS in detecting MRJP1 is 2.0 µg/mL in a solution. MRJP1 could be detected in the pre-treated honey samples by the GSIS. Validation analysis with RJ, milk vetch honey, acacia honey and honey adulteration containing rice syrup and corn syrup with different ratios demonstrated that the GSIS could show consistent T line when the test samples contain crude RJ or more than 30% pure honey. The detection of adulterated honey by sandwich ELISA and EA-IRMS method showed that the MRJP1 content was basically consistent with that of the GSIS. The ELISA method takes a long time to measure, and the EA-IRMS method cannot determine whether the pure syrup sample is a qualified honey.

The successful utilization of the specific-polyclonal antibodies in our present study laid the foundation for the subsequent preparation of more specific GSIS with monoclonal antibodies in the future. Furthermore, the GSIS based on specific-polyclonal antibodies to detect honey adulteration is highly sensitive.

Moreover, our results of GSIS tests on honey adulteration were verified by EA-IRMS. The EA-IRMS method developed by JW White [34] is an effective tool for judging adulterated honey. The qualified honeys judged with the EA-IRMS method by Qinhuangdao Entry–Exit Inspection and Quarantine Bureau in China were exported to the USA, Canada, Germany, Spain, Belgium, Japan, etc. and gained smooth customs clearance in these countries, and customers did not raise any concerns, which proved that the method is reliable [33].

However, the GSIS possesses its weaknesses because it may cause interference to the qualitative judgment of color-distinguishing results. Therefore, semi-quantitative and quantitative detection methods to improve the accuracy of test strip inspection will be explored in the follow-up study. In addition, the process of pretreatment of honey required extraction and dialysis is time-consuming. Thus, it is necessary to explore a more straightforward method for protein separation and purification in future studies.

In summary, as this method has several advantages: low cost, fast detection, easy to use, not need high-cost equipment, it is great potential for high throughput assay. We believe that the test strip test method of this paper may provide a new tool for existing honey adulteration detection technology.

Supporting information

S1 Table. Supplementary data for the titer of the PoAbs.

(XLSX)

S1 File. Immunoassay strip for honey adulteration detection. This is a picture for the detection of honey adulteration by the immunoassay strips studied in this paper.

(PDF)

Acknowledgments

We give special thanks to our long-term collaborators Professor Zhu Guonian and Dr. Guo Yirong who both come from the Institute of Pesticide and Environmental Toxicology, Zhejiang University for providing experimental methods guides and equipment assistance.

Author Contributions

Data curation: Yifan Zhang, Yiting Cai, Zongyan Cui, Jinjie Zhang, Xiaohou Wang.

Formal analysis: Yiting Cai.

Funding acquisition: Lirong Shen.

Project administration: Lirong Shen.

Resources: Yifan Zhang.

Validation: Yong Chen.

Writing – original draft: Yifan Zhang.

Writing – review & editing: Yifan Zhang.

References

1. Chua LS, Lee JY, Chan GF. Characterization of the proteins in honey. *Anal Lett.* 2015; 48: 697–709.
2. Dong H, Luo D, Xian Y, Luo H, Guo X, Li C, et al. Adulteration identification of commercial honey with the C-4 sugar content of negative values by an elemental analyzer and liquid chromatography coupled to isotope ratio mass spectroscopy. *J Agric Food Chem.* 2016; 64: 3258–3265. <https://doi.org/10.1021/acs.jafc.6b00691> PMID: 27064147
3. Rios-Corripio MA, Rojas-López M, Delgado-Macuil R. Analysis of adulteration in honey with standard sugar solutions and syrups using attenuated total reflectance-Fourier transform infrared spectroscopy and multivariate methods. *CyTA-J Food.* 2012; 10: 119–122.
4. Wang S, Guo Q, Wang L, Lin L, Shi H, Cao H, et al. Detection of honey adulteration with starch syrup by high-performance liquid chromatography. *Food Chem.* 2015; 172: 669–674. <https://doi.org/10.1016/j.foodchem.2014.09.044>
5. Ruiz-Matute AI, Soria AC, Martínez-Castro I, Sanz ML. A new methodology based on GC-MS to detect honey adulteration with commercial syrups. *J Agric Food Chem.* 2007; 55: 7264–7269. <https://doi.org/10.1021/jf070559j> PMID: 17676863
6. Zhu XR, Li SF, Shan Y, Zhang ZY, Li GY, Su DL, et al. Detection of adulterants such as sweeteners materials in honey using near-infrared spectroscopy and chemometrics. *J Food Eng.* 2010; 101: 92–97.
7. Sivakesava S, Irudayaraj J. A rapid spectroscopic technique for determining honey adulteration with corn syrup. *J Food Sci.* 2001; 66: 787–791.
8. Bougrini M, Tahri K, Saidi T, Hassani NEAE, Bouchikhi B, Bari NE. Classification of honey according to geographical and botanical origins and detection of its adulteration using voltammetric electronic tongue. *Food Anal Method.* 2016; 9: 2161–2173.
9. Lenhardt L, Bro R, Zeković I, Dramićanin T, Dramićanin MD. Fluorescence spectroscopy coupled with PARAFAC and PLS-DA for characterization and classification of honey. *Food Chem.* 2015; 175: 284–291. <https://doi.org/10.1016/j.foodchem.2014.11.162>

10. Li S, Shan Y, Zhu X, Zhu XR, Zhang X, Ling GW. Detection of honey adulteration by high fructose corn syrup and maltose syrup using Raman spectroscopy. *J Food Compos Anal.* 2012; 28: 69–74.
11. Bertelli D, Lolli M, Papotti G, Bortolotti L, Serra G, Plessi M. Detection of honey adulteration by sugar syrups using one-dimensional and two-dimensional high-resolution nuclear magnetic resonance. *J Agric Food Chem.* 2010; 58: 8495–8501. <https://doi.org/10.1021/jf101460t> PMID: 20681637
12. Hao D, Luo DY, Xian YP, Luo HY, Guo XD, Li C, et al. Adulteration identification of commercial honey with the C-4 sugar content of negative values by an elemental analyzer and liquid chromatography coupled to isotope ratio mass spectroscopy. *J Agric Food Chem.* 2016; 64: 3258–3265. <https://doi.org/10.1021/acs.jafc.6b00691> PMID: 27064147
13. Lutier PM, Vaissière BE. An improved method for pollen analysis of honey. *Rev Palaeobot Palynol.* 1993; 78: 129–144.
14. Guler A, Kocaokutgen H, Garipoglu AV, Onder H, Ekinci D, Biyik S. Detection of adulterated honey produced by honeybee (*Apis mellifera* L.) colonies fed with different levels of commercial industrial sugar (C-3 and C-4 plants) syrups by the carbon isotope ratio analysis. *Food Chem.* 2014; 155: 155–160. <https://doi.org/10.1016/j.foodchem.2014.01.033>
15. Soares S, Amaral JS, Oliveira MBPP, Mafra I. A comprehensive review on the main honey authentication issues: production and origin. *Compr Rev Food Sci F.* 2017; 16(5): 1072–1100.
16. Hawkins J, de Vere N, Griffith A, Ford CR, Allainguillaume J, Hegarty MJ, et al. Using DNA metabarcoding to identify the floral composition of honey: a new tool for investigating honey bee foraging preferences. *Plos One.* 2015; 10: e0134735. <https://doi.org/10.1371/journal.pone.0134735> PMID: 26308362
17. Kato Y, Araki Y, Juri M, Fujinaka R, Ishisaka A, Kitamoto N, et al. Immunochemical authentication of manuka honey using a monoclonal antibody specific to a glycoside of methyl syringate. *J Agric Food Chem.* 2014; 62: 10672–10678. <https://doi.org/10.1021/jf503464a> PMID: 25310890
18. Wang J, Xue X, Du X, Cheng N, Chen L, Zhao J, et al. Identification of acacia honey adulteration with rape honey using liquid chromatography-electrochemical detection and chemometrics. *Food Anal Methods.* 2014; 7: 2003–2012.
19. Trifković J, Andrić F, Ristivojević P, Guzelmerić E, Yesilada E. Analytical methods in tracing honey authenticity. *J Aoac Int.* 2017; 100(4): 827–839. <https://doi.org/10.5740/jaoacint.17-0142> PMID: 28527183
20. Won SR, Lee DC, Ko SH, Kim JW, Rhee HI. Honey major protein characterization and its application to adulteration detection. *Food Res Int.* 2008; 41: 952–956.
21. Bíliková K, Simúth J. New criterion for evaluation of honey: quantification of royal jelly protein apalbumin 1 in honey by ELISA. *J Agric Food Chem.* 2010; 58: 8776–8781. <https://doi.org/10.1021/jf101583s> PMID: 20681666
22. Shen LR, Wang YR, Zhai L, Zhou WX, Tan LL, Li ML, et al. Determination of royal jelly freshness by ELISA with a highly specific anti-apalbumin 1, major royal jelly protein 1 antibody. *J Zhejiang Univ-Sci B (Biomed & Biotechnol).* 2015; 16: 155–166.
23. Wu X, Kong D, Song S, Liu L, Kuang H, Xu C. Development of sandwich ELISA and immunochromatographic strip methods for the detection of *Xanthomonas oryzae* pv. *oryzae*. *Anal Methods.* 2015; 7: 6190–6197.
24. Rosi NL, Mirkin CA. Nanostructures in Biodiagnostics. *Chem Rev.* 2005; 105: 1547–1562. <https://doi.org/10.1021/cr030067f> PMID: 15826019
25. Salazar-Olivo LA, Paz-González V. Screening of biological activities present in honeybee (*Apis mellifera*) royal jelly. *Toxicol in Vitro.* 2005; 19: 645–651. <https://doi.org/10.1016/j.tiv.2005.03.001> PMID: 15893447
26. Bradford MM. A rapid and sensitive method for the quantitation of microgram quantities of protein utilizing the principle of protein-dye binding. *Anal Biochem.* 1976; 72: 248–254. PMID: 942051
27. Anuracpreeda P, Srirakam T, Pandonlan S, Changklungmoa N, Chotwiwatthanakun C, Tinikul Y, et al. Production and characterization of a monoclonal antibody against recombinant cathepsin L1 of *Fasciola gigantica*. *Acta Trop.* 2014; 136: 1–9. <https://doi.org/10.1016/j.actatropica.2014.04.012> PMID: 24736227
28. Shim WB, Yang ZY, Kim JY, Choi JG, Je JH, Kang SJ, et al. Immunochromatography using colloidal gold-antibody probe for the detection of atrazine in water samples. *J Agric Food Chem.* 2006; 54: 9728–9734. <https://doi.org/10.1021/jf0620057> PMID: 17177493
29. Guo YR, Liu SY, Gui WJ, Zhu GN. Gold immunochromatographic assay for simultaneous detection of carbofuran and triazophos in water samples. *Anal Biochem.* 2009; 389: 32–39. <https://doi.org/10.1016/j.ab.2009.03.020> PMID: 19303861

30. Guo L, Song S, Liu L, Peng J, Kuang H, Xu C. Comparison of an immunochromatographic strip with ELISA for simultaneous detection of thiamphenicol, florfenicol and chloramphenicol in food samples. *Biomed Chromatogr.* 2015; 29: 1432–1439. <https://doi.org/10.1002/bmc.3442>
31. Gui WJ, Wang ST, Guo YR, Zhu GN. Development of a one-step strip for the detection of triazophos residues in environmental samples. *Anal Biochem.* 2008; 377: 202–208. <https://doi.org/10.1016/j.ab.2008.03.013> PMID: 18387353
32. AOAC Official Method of Analysis, 998.12, C-4 plant sugars in honey. International standard stable carbon isotope ratio method. International Gaithersburg, MD, USA, 2005, chapter 44: 27–30.
33. Pang GF, Fan CL, Cao YZ, Zhang JJ, Li XM, Li ZY, et al. Study on distribution pattern of stable carbon isotope ratio of Chinese honeys by isotope ratio mass spectrometry. *J Sci Food Agric.* 2006; 86: 315–319.
34. White JW, Honey protein as internal standard for stable carbon isotope ratio detection of adulteration of honey. *J Assoc Off Anal Chem.* 1989; 72:907–911. PMID: 2592312