

The Healthy Weights Initiative: a community-based obesity reduction program with positive impact on depressed mood scores

Mark Edgar Lemstra¹
Marla Rochelle Rogers²

¹Department of Psychiatry,

²Department of Physical Medicine and Rehabilitation, College of Medicine, University of Saskatchewan, Saskatoon, SK, Canada

Objectives: The risk for many chronic diseases increases with obesity. In addition to these, the risk for depression also increases. Exercise interventions for weight loss among those who are not overweight or obese have shown a moderate effect on depression, but few studies have looked at those with obesity. The objectives of this study were to determine 1) the prevalence of depressed mood in obese participants as determined by the Beck Depression Inventory II at baseline and follow-up; 2) the change in depressed mood between those who completed the program and those who did not; and 3) the differences between those whose depressed mood was alleviated after the program and those who continued to have depressed mood.

Methods: Depressed mood scores were calculated at baseline and follow-up for those who completed the program and for those who quit. Among those who completed the program, chi-squares were used to determine the differences between those who no longer had depressed mood and those who still had depressed mood at the end of the program, and regression analysis was used to determine the independent risk factors for still having depressed mood at program completion.

Results: Depressed mood prevalence decreased from 45.7% to 11.7% ($P < 0.000$) from baseline to follow-up among those who completed the program and increased from 44.8% to 55.6% ($P < 0.000$) among those who quit. After logistic regression, a score of < 40 in general health increased the risk of still having depressed mood upon program completion (odds ratio [OR] 3.39; 95% CI 1.18–9.72; $P = 0.023$).

Conclusion: Treating depressed mood among obese adults through a community-based, weight-loss program based on evidence may be an adjunct to medical treatment. More research is needed.

Keywords: obesity, adult, evidence-based practice, depression, Canada

Introduction

Obesity is difficult to treat. It is the result of complex environmental, socioeconomic, and lifestyle factors.^{1–6} As such, the prevalence rate of obesity has more than tripled in Canada in the past 30 years.⁷ Complexities in treatment arise when obese patients have comorbidities, which is often the case.⁸ The risk for cardiovascular disease,^{9,10} diabetes,¹¹ cancers,^{12–14} and premature mortality^{15–21} increases with obesity.

In addition to these, the risk for depression also increases. For example, among a nationally representative sample of 9,125 American adults, it was found that having a body mass index (BMI) of > 30 kg/m² increased the risk of having a lifetime mood disorder by 25% after adjusting for age, sex, smoking, and other psychiatric disorders.²² This increased risk is highly problematic, especially when it is overlooked by health

Correspondence: Marla Rochelle Rogers
Department of Physical Medicine and Rehabilitation, College of Medicine, Saskatoon City Hospital, University of Saskatchewan, 701 Queen Street, Saskatoon S7K 0M7, SK, Canada
Tel +1 306 655 8662
Fax +1 306 655 8813
Email marla.rogers@usask.ca

care professionals, as depression has been identified as a barrier to obesity treatment.^{23–25}

The prevalence of depression among obese adults in previous research has ranged depending on the methodology. For example, Onyike et al²⁶ evaluated data from 1988 to 1994 using *Diagnostic Statistical Manual of Mental Disorders, Third Edition (DSM-III)*, diagnostic criteria for depression and found a prevalence of 5.1% among obese adults (within the past month), while Roberts et al²⁷ evaluated data from 1994 to 1995 using *Diagnostic Statistical Manual of Mental Disorders, Fourth Edition (DSM-IV)*, criteria and found a 15.5% prevalence of depression among obese adults (within the past 2 weeks). In a recent report by the National Center for Health Statistics, the age-adjusted prevalence of moderate depression among obese adults was 42.7% from 2005 to 2010.²⁸

Depression and obesity are closely linked. The relationship appears to be bidirectional, with much discussion in the literature for potential pathways.²⁹ For example, eating behaviors associated with depression have been linked to obesity, such as emotional eating³⁰ and night eating.³¹ Additionally, the use of mood stabilizers such as antidepressants may cause a person to gain weight.³² Negative effects associated with being overweight or obese may also trigger depressive symptoms.²⁹

Cross-sectional studies have found differences in the relationship between obesity and depression among men compared to women and among those with severe obesity. A study analyzing data from the National Health and Nutrition Examination Survey found a significant association between obesity and depression in women, but not in men. The authors also found that those with severe obesity (BMI ≥ 40) were four times more likely to be depressed, even after controlling for many demographic and behavioral factors.²⁶

In a meta-analysis of longitudinal studies on the relationship between depression and overweight and obesity, it was found that baseline obesity increased the onset of depression by 55%, and being overweight increased the risk of onset of depression by 27%. Furthermore, the study found that depression also increased the risk of developing obesity by 58%.³³

The good news is that weight loss can positively impact mood. In a study of 487 patients who underwent gastric-restrictive weight loss surgery, it was found that losing weight after the surgery was associated with a significant and sustained drop in depressed mood scores, at 1-year and 4-year follow-up.³⁴ This narrowly focuses on surgery/weight loss and depressed mood. The impact of other interventions to improve weight has had small to moderate, but positive, results on depression. For example, the Cochrane Collaboration reviewed 35 trials with 1,356 participants to determine

the impact of exercise on depression. The authors concluded that there is only a moderate effect of exercise on depression, and there are too few quality trials.³⁵ Essentially, the research is too early to be definitive. In addition, this review excluded studies with participants who were overweight or obese or those who had only depressed mood, rather than depression. Perhaps the effect would be larger among those who are depressed but are also suffering from obesity.

It is appropriate for an obese person to be treated in a clinician's office or by a commercial weight loss program. The Healthy Weights Initiative in Moose Jaw, Saskatchewan, is a community-based, obesity reduction program that adheres to the ten principles outlined by the International Obesity Task Force and the Guidelines for Managing Overweight and Obesity in Adults (2013), which recommend intensive, multi-component behavioral intervention to address obesity and its related health effects.³⁶ The first objective is to determine the prevalence and severity of depressed mood in obese participants as determined by a validated instrument at baseline and follow-up for the first five waves of participants. The second objective is to determine the change in depressed mood between those who completed the program and those who did not. The third objective is to determine the differences between those whose depressed mood was alleviated after the program and those who continued to have depressed mood.

Methods

Setting

According to data from Statistics Canada, there are ~5,000 adults living in the city of Moose Jaw, Saskatchewan, Canada, who are obese.³⁷

Participants

Adults with a BMI ≥ 30 kg/m² who were referred to the program by a medical doctor were eligible to participate. Participants received a medical screen by their family physician to ensure safety to participate. No other inclusion or exclusion criteria were applied. This study was deemed exempt from ethical approval by the University of Saskatchewan Behavioural Ethics Board. As this study met the requirements for exemption status per Article 2.5 of the Tri-Council Policy Statement: Ethical Conduct for Research Involving Humans, December 2014, participant consent was not sought.

Measures

The Beck Depression Inventory II (BDI-II) was used to measure depressed mood among participants.³⁸ This tool has a good internal scale reliability for community-dwelling adults (Cronbach's alpha =0.86–0.92).³⁹ Scores of 1–10 indicate

no depressed mood; scores of 11–16 indicate mild mood disturbances; 17–20 represent borderline clinical depressed mood; 21–30 represent moderate depressed mood; 31–40 indicate severe depressed mood; and scores of 41 or more indicate extreme depressed mood.

The Short Form-36 (SF-36) was used to measure general health status.⁴⁰ The SF-36 is a commonly used instrument that measures eight dimensions of health: physical functioning, physical role functioning, bodily pain, general health perceptions, vitality, social role functioning, emotional role functioning, and mental health.

Four questions on self-esteem were taken from the Self-Description Questionnaire III. These questions asked participants to give an answer of 1) “false,” 2) “mostly false,” 3) “sometimes true, sometimes false,” 4) “mostly true,” and 5) “true” to each statement.⁴¹

During a medical screen, each participant had their blood pressure, blood sugar, and blood cholesterol levels tested. Individual fitness evaluations were also conducted, which included calculation of each participant’s BMI, waist-to-hip ratio, body fat percentage, and aerobic fitness.⁴²

Procedures

The Healthy Weights Initiative is a community-based weight loss program offering group-based sessions at the local YMCA (Young Men’s Christian Association), and offered free of charge to all participants. Each participant received programming for 12 consecutive weeks, which included five group exercise sessions per week (60 in total) led by an exercise therapist; one group dietary session per week (12 in total) led by a dietician; and one group cognitive-behavioral therapy session per week (12 in total) led by a registered psychologist. After completing the program, participants received one group-based exercise session per week for an additional 12 weeks to serve as maintenance therapy. The details of each section of the program are described elsewhere.⁴³

Each participant was asked to attend with a family member or friend who also had a BMI of at least 30. This social support individual, or “buddy,” was also asked to sign a social support contract, which acknowledges the participant’s physical activity and dietary goals, possible barriers to achieving those goals, solutions to overcoming those barriers, and how the buddy can help implement those solutions. Two other family members or friends also signed the social support contract. Each of these components is recommended by the Canadian Society for Exercise Physiology Physical Activity Training for Health guidelines.⁴²

At 12 weeks, identical outcome measures from baseline were obtained from those who completed the program.

Those who quit the program were contacted by clinic staff to complete a follow-up BDI-II survey.

Analysis

Those who scored 11 or higher on the BDI-II were considered to have depressed mood. Mean scores (with 95% confidence intervals [CI]) and prevalence rates between those who completed the program and those who quit the program were compared at baseline and follow-up, and chi-squares (SPSS Version 23.0) were used to determine statistically significant differences.

Those who completed the program and who scored 11 or higher on the BDI-II at baseline were included in an additional analysis. Baseline and follow-up mean BDI-II scores were compared using a paired samples *t*-test. Further, the group was broken down into two categories: those who no longer had depressed mood at follow-up and those who did. These groups were then compared across demographics, comorbidities, prescription drug use, smoking status, program adherence, self-esteem, self-report health, and self-report mental health using cross-tabulations. Mean scores were compared with 95% confidence intervals reported ($P < 0.05$) for physiological measures (including weight, body composition, BMI, blood glucose, blood cholesterol, and blood pressure), and SF-36 domain scores were also compared across the two groups.

After these initial cross-tabulations, binary logistic regression was used to determine the independent association between the outcome variable of depressed mood at 12 weeks and the potential explanatory variables. In the case where means were statistically significant, scores were grouped into exclusive binary categories. The unadjusted effect of each covariate was determined and then entered one step at a time based on changes in the $-2\log$ likelihood and the Wald test. The final results are presented as adjusted odds ratios with 95% CIs.⁴⁴

Results

Participant demographic and baseline information are presented in Table 1. Females, younger participants (<45 years of age), and single participants had significantly higher mean scores on the baseline BDI-II, where higher scores indicate more depressed mood. There were no significant differences in baseline mean scores across education level, employment, smoking status, and program completion or adherence (Table 2).

Figure 1 indicates the participant data used in this study. Those with missing data were removed from the analysis. The prevalence of depressed mood at baseline among those who completed the program ($n=232$) was 45.3% (27.2%

Table 1 Participant demographics and baseline information in the Healthy Weights Initiative, N=296

Variable	n (%)
Sex	
Male	76 (25.7)
Female	220 (74.3)
Age category (years)	
18–25	18 (6.1)
26–34	50 (16.9)
25–44	78 (26.4)
45–54	75 (25.3)
55–64	70 (23.6)
65+	5 (1.7)
Marital status	
Married	179 (60.5)
Common law	32 (10.8)
Single	85 (28.7)
Education level	
Less than high school	19 (6.4)
High school	111 (37.5)
College/technical/trade	123 (41.6)
University	42 (14.2)
Missing	1 (0.3)
Employment status	
Unemployed	46 (15.6)
Nonprofessional	194 (65.5)
Professional	54 (18.2)
Retired	2 (0.7)
Chronic disease comorbidities	
At least one reported	199 (67.2)
None reported	95 (32.1)
Missing	2 (0.7)
Smoking status	
Smoker	51 (17.2)
Nonsmoker	237 (80.0)
Missing	8 (2.7)
Baseline obesity	
Class I	107 (36.1)
Class II	90 (30.4)
Class III	94 (31.8)
Missing	5 (1.7)
Completed the program	
Yes	234 (79.1)
No	62 (20.9)
Depressed mood (BDI-II range)	
Normal (≤ 10)	158 (53.4)
Mild (11–16)	71 (24.0)
Borderline clinical (17–20)	37 (12.5)
Moderate (21–30)	19 (6.4)
Extreme/severe (> 31)	5 (1.7)
Missing	6 (2.0)

Abbreviation: BDI-II, Beck Depression Inventory II.

had mild mood disturbances, 12.1% had borderline clinical depressed mood, 4.7% had moderate depressed mood, and 1.3% had severe or extreme depressed mood). The prevalence of depressed mood at baseline among those who quit the program (n=56) was 46.4% (17.9% had mild

Table 2 Baseline BDI-II scores across demographics and program completion and adherence (lower scores indicate better mood), N=290

	Mean (SD)	95% CI	P-value
Sex			0.003
Males	8.3 (7.0)	6.7–9.9	
Females	11.3 (7.5)	10.3–12.3	
Age			0.008
<45 years	11.7 (8.1)	10.3–13.0	
45 years or older	9.3 (6.5)	8.2–10.4	
Marital status			0.018
Single	12.1 (8.0)	10.4–13.8	
Married/common law	9.8 (7.1)	8.8–10.8	
Education level			0.579
Secondary or less	10.8 (7.5)	9.4–12.1	
Postsecondary	10.3 (7.5)	9.1–11.4	
Employment			0.541
Unemployed	10.1 (6.4)	8.2–11.9	
Nonprofessional	10.8 (7.7)	9.7–11.9	
Professional	9.6 (7.3)	7.6–11.7	
Smoking status			0.662
Smoker	11.0 (8.8)	8.4–13.5	
Nonsmoker	10.4 (7.2)	9.5–11.4	
Program completion			0.111
No	11.9 (7.9)	9.8–14.0	
Yes	10.1 (7.3)	9.2–11.1	
Gym adherence			0.178
<80%	11.0 (6.7)	9.7–12.3	
80% or more	9.7 (7.8)	8.5–10.9	
Diet adherence			0.164
<80%	10.6 (7.7)	9.4–11.8	
80% or more	9.1 (6.2)	7.6–10.6	
CBT adherence			0.212
<80%	10.5 (7.7)	9.4–11.1	
80% or more	9.1 (6.0)	7.5–10.7	

Notes: P-values were considered significant at an α level of 0.05. A comparison of means was performed via a two sample t-test.

Abbreviations: BDI-II, Beck Depression Inventory II; CBT, cognitive-behavioral therapy.

mood disturbances, 12.5% had borderline clinical depressed mood, 14.3% had moderate depressed mood, and 1.8% had severe or extreme depressed mood). The results are presented in Table 3. The higher scores among those who quit the program on the BDI-II are discussed in further detail in another paper.⁴³

The depressed mood prevalence at follow-up among those who completed the program decreased from 45.7% to 11.7% (9.9% had mild mood disturbances, 0.5% had borderline clinical depressed mood, and 1.4% had moderate depressed mood). In contrast, the depressed mood prevalence among those who did not complete the program increased to 55.6% at follow-up from 44.8% (14.8% had mild mood disturbances, 20.4% had borderline clinical depressed mood, and 20.4% had moderate depressed mood).

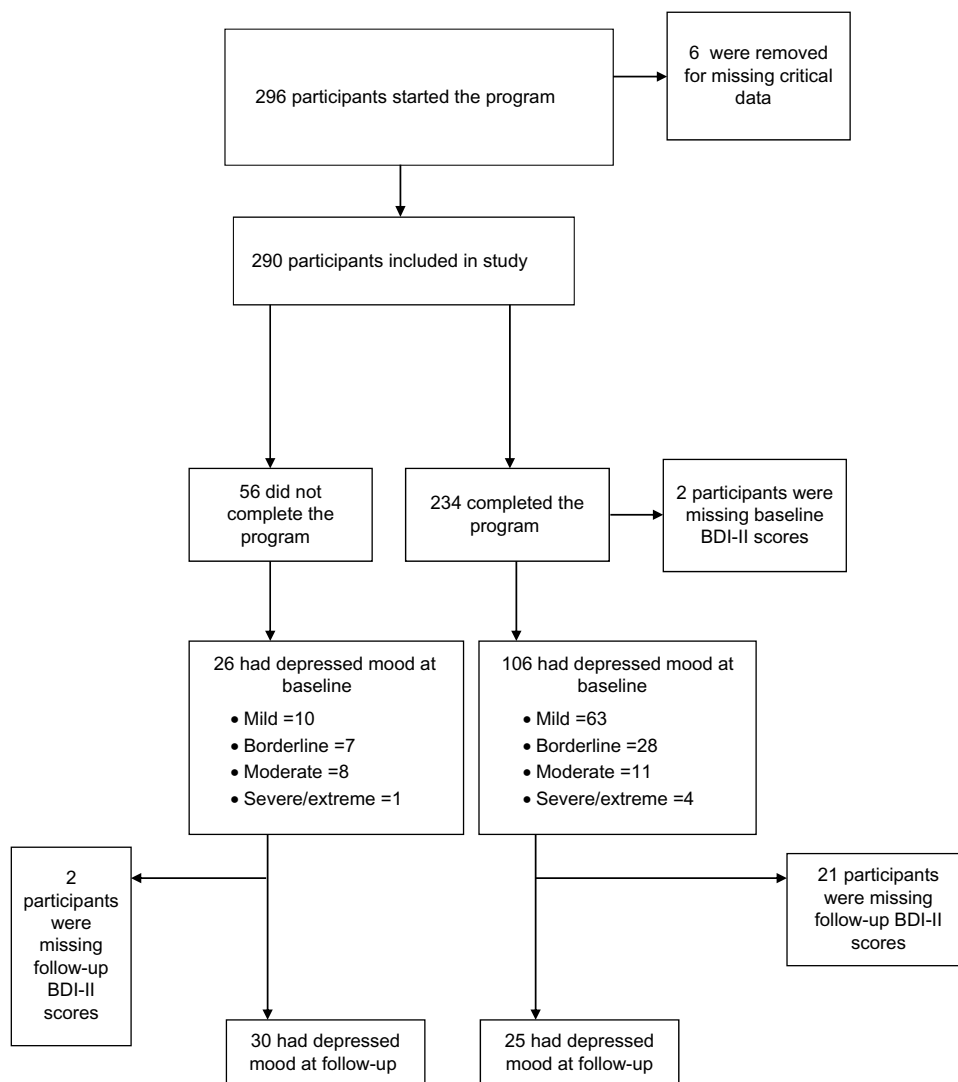


Figure 1 Flow diagram for included participants.
Abbreviation: BDI-II, Beck Depression Inventory II.

Table 3 Comparing baseline and follow-up BDI-II scores between those who completed the program and those who quit (lower scores indicate better mood), N=290

	Did not complete, the program	Completed, the program	P-value
Mean BDI score (mean ± SD)			
Baseline	12.13 (8.1)	9.97 (7.0)	
Follow-up	13.23 (9.4)	5.09 (4.6)	
Baseline (%)			0.039
No depressed mood	30 (53.6)	127 (54.7)	
Mild/borderline depressed mood	17 (30.4)	91 (39.3)	
Moderate-to-severe depressed mood	9 (16.0)	14 (6.0)	
Follow-up (%)			0.000
No depressed mood	24 (42.9)	188 (80.3)	
Mild/borderline depressed mood	15 (26.8)	22 (9.4)	
Moderate-to-severe depressed mood	15 (26.8)	3 (1.3)	

Notes: Results are in response to a one way analysis of variance (ANOVA). P-values were considered significant at the α 0.05 level.
Abbreviation: BDI-II, Beck Depression Inventory II.

The 106 participants who were experiencing some level of depressed mood at baseline were included in an additional analysis. The sample was predominantly female (81.1%), and 18.9% were 55–64 years, 38.3% were 45–54 years, 30.2% were 35–44 years, 17.9% were 26–34 years, and 4.7% were 18–25 years. Two-thirds were married or in a common-law relationship, while the remaining 33% were not married. In regard to education, 15.1% completed university, 41.5% completed college, technical, or trade school, 35.8% completed high school, and 7.5% had less than high school education. Most were employed, with 67% working in nonprofessional fields and 17% working in professional fields. Baseline mean BDI-II score (16.2) differed significantly from the follow-up mean score (7.41), at $P < 0.001$.

There were no significant differences among those who continued to have depressed mood from those who no longer had depressed mood at follow-up across sex, age, marital status, employment status, education level, or smoking status. Nor were there any significant differences in the number of comorbidities, number of prescription drugs, or health care utilization reported at baseline. Further, there were no significant differences between the two groups with regard to adhering to any segment of the program (Table 4).

Those who continued to have depressed mood after the program selected false or mostly false to the statement, “I like the way I look” at baseline significantly more than those who no longer reported depressed mood ($P = 0.001$). There were no other differences in self-esteem variables or in self-report health or self-report mental health at baseline (Table 5).

Those who no longer reported depressed mood did score significantly better on the SF-36 pain ($P = 0.018$) and general health domains ($P = 0.026$) at baseline than those who continued to have depressed mood. Although those who were no longer depressed scored better on all remaining dimensions but one (role limitations due to emotional health), these were not significant. There were no statistically significant differences between those who continued to have depressed mood after the program and those who no longer had depressed mood on any physiological measure at baseline (Table 5).

After regression analysis (presented in Table 6), only SF-36 general health domain score independently increased the risk of still having depressed mood at follow-up (odds ratio 3.39; 95% CI 1.18–9.72; $P = 0.023$).

Discussion

Although the Healthy Weights Initiative was designed as an obesity reduction program, the completion of the program is associated with a significant reduction in depressed mood.

Table 4 Subgroup with BDI-II scores of ≥ 11 at baseline (n=106)

	Depressed mood, after 12 weeks (%)	No depressed mood, after 12 weeks (%)	P-value
Demographics			
Sex			0.942
Male	4 (23.5)	13 (76.5)	
Female	19 (24.4)	59 (75.6)	
Age (years)			0.364
Younger than 45	8 (17.0)	39 (83.0)	
45 and older	15 (31.3)	33 (68.8)	
Marital status			0.908
Not married	8 (23.5)	26 (76.5)	
Married or common law	15 (24.6)	46 (75.4)	
Employment			0.765
Not employed	5 (31.3)	11 (68.8)	
Nonprofessional	15 (23.1)	50 (76.9)	
Professional	3 (21.4)	11 (78.6)	
Education level			0.483
High school or less	8 (20.5)	31 (79.5)	
Postsecondary	15 (26.8)	41 (73.2)	
Health			
Number of comorbidities reported			0.527
None	6 (30.0)	14 (70.0)	
One	4 (16.0)	21 (84.0)	
Two or more	12 (24.5)	37 (75.5)	
Number of prescription drugs			0.116
None	8 (23.5)	26 (76.5)	
One or two	6 (15.4)	33 (84.6)	
Three or more	8 (40.0)	12 (60.0)	
Smoking status			0.174
Yes	6 (37.5)	10 (62.5)	
No	17 (21.5)	62 (78.5)	
Program adherence			
Exercise sessions			0.470
<80%	9 (29.0)	22 (71.0)	
80% or more	14 (22.2)	49 (77.8)	
Diet sessions			0.726
<80%	7 (22.6)	24 (77.4)	
80% or more	12 (26.1)	34 (73.9)	
CBT sessions			0.742
<80%	10 (26.3)	28 (73.7)	
80% or more	9 (23.1)	30 (76.9)	

Note: Cross-tabulations of depressed mood at follow-up across demographics, health variables, and program adherence. P-values were considered significant at an α level of 0.05. A comparison of means was performed via a two sample t-test.

Abbreviations: BDI-II, Beck Depression Inventory II; CBT, cognitive-behavioral therapy.

Among those who began the program with a BDI-II score of 11 or more (depressed mood), 67.9% no longer had depressed mood after 12 weeks. This is an important result, as even those with severe and extreme depressed mood improved. Depressed mood prevalence at baseline among those who quit the program was similar to those who completed the program (45.3% vs 46.4%), but after follow-up, those who quit the

Table 5 Subgroup with BDI-II scores of ≥ 11 at baseline (n=106)

	Depressed mood, after 12 weeks	No depressed mood, after 12 weeks	P-value
Self-esteem (%)			
In general, I like the way I am			0.144
False/mostly false	13 (31.7)	28 (68.3)	NA
Sometimes true/sometimes false	10 (22.2)	35 (77.8)	NA
True/mostly true	0	8 (100.0)	NA
I have a lot to be proud of			0.900
False/mostly false	1 (16.7)	5 (83.3)	NA
Sometimes true/sometimes false	13 (25.0)	39 (75.0)	NA
True/mostly true	9 (25.0)	27 (75.0)	NA
Many things about me are good			0.687
False/mostly false	1 (12.5)	7 (87.5)	NA
Sometimes true/sometimes false	10 (27.0)	27 (73.0)	NA
True/mostly true	12 (24.5)	37 (75.5)	NA
I like the way I look			0.001
False/mostly false	20 (33.9)	39 (66.1)	NA
Sometimes true/sometimes false	2 (3.1)	31 (96.9)	NA
True/mostly true	2 (66.7)	1 (33.3)	NA
Self-report (%)			
Mental health			0.874
Poor/fair	9 (25.0)	27 (75.0)	NA
Good	12 (25.5)	35 (74.5)	NA
Very good/excellent	2 (22.2)	9 (77.8)	NA
Health			0.303
Poor/fair	18 (28.6)	45 (71.4)	NA
Good	5 (18.5)	22 (81.5)	NA
Very good/excellent	0	4 (100.0)	NA
SF-36 dimension (mean \pm SD)			
Physical functioning	54.4 (18.6)	62.1 (22.2)	0.136
Role limitations d/t physical health	47.5 (34.5)	52.3 (38.3)	0.594
Pain	6.6 (17.7)	59.8 (24.2)	0.018
General health	32.8 (18.3)	43.7 (20.7)	0.026
Vitality	33.1 (18.4)	35.5 (16.0)	0.555
Social functioning	59.1 (23.2)	61.3 (23.8)	0.705
Role limitations d/t emotional health	54.6 (30.6)	51.1 (39.4)	0.697
Emotional well-being	49.2 (11.9)	56.3 (16.9)	0.061
Physiological measure (mean \pm SD)			
Weight (lbs)	240.3 (47.9)	242.8 (47.0)	0.829
Body mass index (kg/m ²)	39.0 (7.5)	38.9 (7.0)	0.929
Body fat (lbs)	111.8 (27.0)	110.9 (26.3)	0.893
Body fat (%)	46.3 (3.9)	45.2 (4.3)	0.286
Waist circumference (inches)	46.1 (6.1)	45.4 (5.4)	0.587
Hip circumference (inches)	50.5 (6.2)	51.7 (7.0)	0.444
Systolic blood pressure (mmHg)	128.9 (17.3)	131.7 (11.0)	0.361
Diastolic blood pressure (mmHg)	84.8 (10.7)	84.0 (10.8)	0.751
Blood glucose (mmol/L)	5.5 (0.5)	6.0 (2.3)	0.279
Blood cholesterol (mmol/L)	4.9 (1.1)	5.0 (1.2)	0.786
Aerobic fitness score	151.7 (128.5)	161.6 (120.6)	0.738

Notes: Cross-tabulations of depressed mood at follow-up across mental health, well-being, and physiological measures at baseline. Results are in response to a one way analysis of variance (ANOVA). P-values were considered significant at the α 0.05 level.

Abbreviations: BDI-II, Beck Depression Inventory II; SF-36, Short Form-36; d/t, due to.

program reported an increased prevalence of depressed mood while those who completed the program showed a significant reduction. The prevalence of moderate to severe depressed mood at baseline was lower among those who completed the program than among those who quit. Among all participants,

the prevalence of moderate to severe depressed mood was 8.3%, which is comparable to previous studies that used *DSM-III* criteria to diagnose depression.^{26,27}

Those whose depressed mood improved at the end of the program responded with “sometimes true, sometimes false”

Table 6 Independent risk factors for having depressed mood at follow-up

Independent variable	Odds ratio	95% CI	P-value
SF-36 general health Score <40	3.39	1.18–9.72	0.023

Note: Results are in response to a binary logistic regression. P-values were considered significant at the α 0.05 level.

Abbreviation: SF-36, Short Form-36.

more often to the statement “I like the way I look” at baseline than those who had depressed mood at the end of the program (96.9% vs 3.1%). Although not a necessarily positive answer, it suggests that those who no longer had depressed mood may self-evaluate their body image on a day-to-day basis, rather than having an overall negative outlook. This may be indicative for self-compassion, an alternative conceptualization of healthy attitude toward self, and an attribute theoretically protective against depression.⁴⁵

Those who no longer had depressed mood at follow-up had higher baseline scores on the SF-36 for pain, and therefore, more room to improve their pain. Pain has long been linked to depression.⁴⁶ A longitudinal study of 500 primary care patients over 1 year found that pain was a strong predictor of depression severity, but depression severity was also a strong predictor of subsequent pain.⁴⁷ Chronic pain is relatively common in Canadian population (18.9% in 2011),⁴⁸ and especially common among those with obesity.⁴⁹ One systematic review found obesity to be associated with pain from fibromyalgia, headaches, upper and lower extremity pain, and low back pain; the review further supports that weight loss can improve a wide variety of body pain related to obesity.⁴⁹

Further, those who no longer had depressed mood at follow-up had higher baseline scores on the SF-36 dimension of general health. This domain covers self-report health, expectations about future health, and comparing health to others. Having a lower baseline score on this domain independently increased the risk of having depressed mood at follow-up by 239%, suggesting those with worse self-perception of their health are harder to treat with regard to depressed mood. A study published in *the Lancet* on comorbid depression and chronic disease from 60 countries found that after controlling for socioeconomic factors and health conditions, depression was the strongest predictor of worsening health compared to arthritis, asthma, diabetes, and angina.⁵⁰ Given that 69.8% of the baseline depressed mood sample reported one or more comorbidities, this is important to consider when treating comorbid obesity.

Depressed mood is a central symptom of clinical depression and should be investigated and addressed promptly by

care providers. Having a chronic condition, such as obesity, is significantly associated with having depression,⁵¹ and as many as 74% of those who have depression do not seek treatment.⁵² Adherence rates for medical treatment of depression are also notoriously poor. One study found that 45.9% of Canadian patients who are prescribed antidepressants quit taking their medication within 1 year.⁵³ Given that certain types of antidepressants may actually contribute to weight problems, these may not be a suitable treatment method for those who are already obese.

Failing to adequately acknowledge and treat depression is not only detrimental to the health of the individual but also expensive. In a study published by the Centre for Addiction and Mental Health, depression costs the Canadian economy \$51 billion per year, with a majority due to lost productivity and absence from work. For example, when a worker takes leave from work due to depression, the average cost to an employer is \$18,000.⁵⁴

The cognitive-behavioral therapy sessions offered in the program are important in addressing mental health, but the diet sessions and the exercise sessions, as well as losing weight itself, also play a role in positively impacting mood. For example, a study published in the *American Journal of Psychiatry* found that a “Western” diet was associated with poorer mental and physical health among women than “traditional” dietary patterns of high vegetable, fruit, meat, fish, and whole grains.⁵⁵

Exercise as a treatment for depression has received more research attention, but the quality of research appears to be low. In a 2013 review by the Cochrane Collaboration, a moderate effect was found for exercise in the treatment of depression when reviewing robust randomized controlled trials.⁵⁵ The authors concluded there is still a need for studies on the independent effect of exercise on depression. A systematic review of exercise interventions used as a method to manage depression published in the *British Medical Journal* came to a similar conclusion.⁵⁶ However, studies included in both reviews did not look at the impact of exercise on depression in an obese population.

Here, we reviewed the impact of a comprehensive intervention that included five exercise sessions a week on depressed mood in obese adults. Markowitz et al²⁹ suggest that overlap in treatment modalities for depression and obesity may be particularly effective, due to treating either condition will address improvements in life functioning and stress management. Challenges can occur in adherence, but the Healthy Weights Initiative has social support structures in place to improve adherence.

Clinical Implications

Depressed mood in obesity may be treated with an obesity-reduction program that includes exercise, cognitive behavioural therapy, and diet education. Depressed mood is strongly tied to general health and should be addressed by health care professionals among those suffering from obesity.

Limitations

Those who did not complete the program were all contacted between 6 months and 12 months after anticipated program completion. Further, the long-term (1 year) results of the study are not yet available. It is possible that adherence to weight loss practices promoted in the program may change, and therefore, the physical and mental health outcomes associated with the program may also change.

Conclusion

The Healthy Weights Initiative uses evidence-based practices, is comprehensive in its targeting of unhealthy weight behaviors, is community based, and promotes strong social support. Although designed as an obesity reduction program, there are benefits to mental health and depressed mood. Given the sometimes poor treatment outcomes with medical therapy,^{57,58} low adherence rates,⁵¹ and the multiple pathways between obesity and depression, treating depressed mood through a community-based, weight-loss program based on evidence may be a superior alternative to medical treatment.

Acknowledgments

Special thanks to Alliance Wellness and Rehabilitation and to the Moose Jaw YMCA for administering the program and collecting the data. Funding was obtained from the Public Health Agency of Canada (1516-HQ-000036). The views expressed herein do not necessarily represent the views of the Public Health Agency of Canada. The authors have reviewed and agreed with the content of this manuscript.

Disclosure

The authors report no conflicts of interest in this work.

References

- Kumanyika S, Jeffery RW, Morabia A, Ritenbaug C, Antipatis VJ. Public health approaches to the prevention of obesity (PAHPO) working group of the international obesity task force (IOTF). *Int J Obesity*. 2002;26:425–436.
- Tremblay MS, Willms JD. Is the Canadian childhood obesity epidemic related to physical inactivity? *Int J Obesity*. 2003;27:1100–1105.
- Crespo CJ, Smit E, Troiano P, Bartlett SJ, Macera CA, Andersen RE. Television watching, energy intake, and obesity in US children. *Arch Ped Adoles Med*. 2001;155:360–365.
- Janssen I, Katzmarzyk PT, Boyce WF, King MA, Pickett W. Overweight and obesity in Canadian adolescents and their associations with dietary habits and physical activity patterns. *J Adolesc Health*. 2004;35:360–367.
- Mozaffarian D, Hao T, Rimm EB, Willett WC, Hu FB. Changes in diet and lifestyle and long-term weight gain in women and men. *N Eng J Med*. 2011;364:2392–2404.
- Chang VW, Lauderdale DS. Income disparities in body mass index and obesity in the United States, 1971–2002. *Arch Int Med*. 2005;165:2122–2128.
- Twells LK, Gregiry DM, Reddigan J, Midozi WK. Current and predicted prevalence of obesity in Canada: a trend analysis. *Can Med Assoc J*. 2014;2(35):18–26.
- Must A, Spadano J, Coakley EH, Field AE, Colditz G, Dietz WH. The disease burden associated with overweight and obesity. *JAMA*. 1999;282(16):1523–1529.
- Manson JE, Stampfer MJ, Colditz GA. A prospective study of obesity and risk of coronary heart disease in women. *N Eng J Med*. 1990;322(13):882–889.
- De Koning L, Merchant AT, Pogue J, Anand SS. Waist circumference and waist-to-hip ratio as predictors of cardiovascular events: meta-regression analysis of prospective studies. *Eur Heart J*. 2007;28(7):850–856.
- Anderson JW, Kendall CWC, Jenkins DJA. Importance of weight management in type 2 diabetes: review with meta-analysis of clinical studies. *J Amer C Nutr*. 2003;22(5):331.
- Calle EE, Rodriguez C, Walker-Thurmond K, Thun MJ. Overweight, obesity, and mortality from cancer in a prospectively studied cohort of U.S. adults. *N Engl J Med*. 2003;348(17):1625–1638.
- Ligibel JA, Alfano CM, Courneya KS, et al. American society of clinical oncology position statement on obesity and cancer. *J Clin Oncol*. 2014;32(31):3568–3574.
- Reeves GK, Pirie K, Beral V, et al; Million Women Study Collaboration. Cancer incidence and mortality in relation to body mass index in the Million Women Study: cohort study. *Br Med J*. 2007;335(7630):1134.
- Van Dam RM, Li T, Spiegelman D, Franco OH, Hu FB. Combined impact of lifestyle factors on mortality: prospective cohort study in US women. *Br Med J*. 2008;337:a1440.
- Adams KF, Scatzkin A, Harris TB, et al. Overweight, obesity and mortality in a large prospective cohort of persons 50 to 71 years old. *N Eng J Med*. 2006;255(8):763–778.
- Calle EE, Thun MJ, Petrelli JM, Rodriguez C, Heath CW Jr. Body mass index and mortality in a prospective cohort of US adults. *N Eng J Med*. 1999;341(15):1097–1105.
- Flegal KM, Graubard BI, Williamson DF, Gail MH. Excess deaths associated with underweight, overweight and obesity. *JAMA*. 2005;293(15):1861–1867.
- Fontaine KR, Redden DT, Wang C, Westfall AO, Allison DB. Years of life lost due to obesity. *JAMA*. 2003;289(2):187–193.
- Olshansky SJ, Passaro DJ, Hershow RC, et al. A potential decline in life expectancy in the United States in the 21st century. *N Eng J Med*. 2010;362(15):1293–1301.
- Jacobs EJ, Newton CC, Wang Y, et al. Waist circumference and all-cause mortality in a large US cohort. *Arch Intern Med*. 2010;170(15):1293–1301.
- Simon GE, Von Korff M, Saunders K, et al. Association between obesity and psychiatric disorders in the US adult population. *Arch Gen Psychiatry*. 2006;63:824–830.
- Mauro M, Taylor V, Wharton S, Sharma AM. Barriers to obesity treatment. *Europ J Intern Med*. 2008;19:173–178.
- Linde JA, Jeffery RW, Levy RL, et al. Binge eating disorder, weight control self-efficacy, and depression in overweight men and women. *Int J Obes Relat Metab Disord*. 2004;28:418–425.
- McGuire MT, Wing RR, Klem ML, Lang W, Hill JO. What predicts weight regain in a group of successful weight losers? *J Consult Clin Psychol*. 1999;67:177–185.

26. Onyike CU, Crus RM, Lee HB, Lyketsos CG, Eaton WW. Is obesity associated with major depression? Results from the Third National Health and Nutrition Examination Survey. *Am J Epidemiol*. 2003;158:1139–1147.
27. Roberts RE, Kaplan GA, Shena SJ, Strawbridge WJ. Are the obese at greater risk for depression? *Am J Epidemiol*. 2000;152(2):163–170.
28. Pratt LA, Brody DJ. Depression and obesity in the US adult household population 2005–2010. *NCHS Data Brief*. 2014;167:1–8.
29. Markowitz S, Friedman MA, Arent SM. Understanding the relation between obesity and depression: causal mechanisms and implications for treatment. *Clin Psychol Sci Prac*. 2008;15:1–20.
30. Ouwens MA, van Strien T, van Leeuwe JFJ. Possible pathways between depression, emotional and external eating. A structural equation model. *Appetite*. 2009;53(2):245–248.
31. Gluck ME, Geliebter A, Satov T. Night eating syndrome is associated with depression, low self-esteem, reduced daytime hunger, and less weight loss in obese outpatients. *Obes Res*. 2001;9(4):264–267.
32. Schwartz TL, Nihalani N, Jindal S, Virk S, Jones N. Psychiatric medication-induced obesity: a review. *Obes Rev*. 2004;5:115–121.
33. Luppino FS, de Wit LM, Bouvy PF, et al. Overweight, obesity and depression: a systematic review and meta-analysis of longitudinal studies. *JAMA Psychiatry*. 2010;67(3):220–229.
34. Dixon JB, Dixon M, O'Brien PE. Depression in association with severe obesity changes with weight loss. *Arch Intern Med*. 2003;163:2058–2065.
35. Cooney GM, Dwan K, Greig CA, et al. Exercise for depression. *Cochrane Database Syst Rev*. 2013;9:CD004366. doi: 10.1002/14651858.CD004366.pub6.
36. Kushnar RF, Ryan DH. Assessment and lifestyle management of patients with obesity: clinical recommendations from systematic reviews. *JAMA*. 2014;312(9):943–952.
37. Statistics Canada [homepage on the Internet]. *Canadian Community Health Survey*. Statistics Canada; 2013. Available from: www.12statcan.gc.ca. Accessed December 10, 2014.
38. Beck AT, Steer RA, Brown GK. *Manual for the Beck Depression Inventory-II*. San Antonio, TX: Psychological Corporation; 1996.
39. Segal DL, Coolidge FL, Cahill BS, O'Riley AA. Psychometric properties of the Beck Depression Inventory-II (BDI-II) among community-dwelling older adults. *Behav Modif*. 2008;32(1):3–20.
40. Ware JE, Kosinski M, Keller SD. *SF-36 Physical and Mental Health Summary Scales: A Users' Manual*. Boston, MA: The Health Institute; 1994.
41. Marsh HW, O'Neill R. Self Description Questionnaire III: the construct validity of multidimensional self-concept ratings by late adolescents. *J Ed Measurement*. 1984;21(2):153–174.
42. Canadian Society for Exercise Physiology. *Physical Activity Training for Health – Resource Manual*. Ottawa, ON: 2013.
43. Lemstra M, Rogers M. The importance of community consultation and social support in adhering to an obesity reduction program: results from the healthy weights initiative. *Patient Pref Adherence*. 2015;9:1470–1483.
44. Rothman KJ, Greenland S. *Modern Epidemiology*. 2nd ed. Philadelphia, PA: Lippincott Williams and Wilkins; 1998.
45. Neff K. Self-compassion: an alternative conceptualization of a healthy attitude toward oneself. *Self Identity*. 2003;2:85–101.
46. Fishbain D, Cutler R, Hubert R, Rosomoff RS. Chronic pain-associated depression: antecedent or consequence of chronic pain? A review. *Clin J Pain*. 1997;13(2):116–137.
47. Kroenke K, Wu J, Bair MJ, Krebs EE, Damush TM, Tu W. Reciprocal relationship between pain and depression: a 12-month longitudinal analysis in primary care. *J Pain*. 2011;12(9):964–973.
48. Schopflocher D, Tenzer P, Jovey R. The prevalence of chronic pain in Canada. *Pain Res Manage*. 2011;16(6):445–450.
49. Narouze S, Souzalnitski D. Obesity and chronic pain: systematic review of prevalence and implications for pain practice. *Reg Anesth Pain Med*. 2015;40(2):91–111.
50. Moussavi S, Chatterji S, Verdes E, Tandon A, Patel V, Ustun B. Depression, chronic diseases, and decrements in health: results from the World Health Surveys. *Lancet*. 2007;370(9590):851–858.
51. Patten SB, Wang JL, Williams JV, et al. Descriptive epidemiology of major depression in Canada. *Can J Psychiatry*. 2006;51(2):84–90.
52. Statistics Canada. Depression: an undertreated disorder? *Health Rep*. 1997;8:No.4. Available from: <http://www5.statcan.gc.ca/olc-cel/olc.action?ObjId=82-003-X19960043021&ObjType=47&lang=en>. Accessed October 22, 2015.
53. Bulloch AG, Patten SB. Non-adherence to psychotropic medications in the general population. *Soc Psychiatry Psychiatr Epidemiol*. 2010;45(1):47–56.
54. Amba D. Depression costs Canada \$51 billion per year. *Postmedia News*. 2012. Available from: <http://www.canada.com/business/Depression+costs+Canada+billion+year/6002202/story.html>. Accessed November 6, 2013.
55. Jacka FN, Pasco JA, Mykletun A, et al. Association of Western and Traditional diets with depression and anxiety in women. *Amer J Psychiatry*. 2010;167(3):305–311.
56. Lawlor DA, Hopker SW. The effectiveness of exercise as an intervention in the management of depression: systematic review and meta-regression analysis of randomised controlled trials. *BMJ*. 2001;322:763.
57. Moncrieff J, Wessely S, Hardy R. Active placebos versus antidepressants for depression. *Cochrane Database Syst Rev*. 2004;(1):CD003012.
58. Kirsch I, Moore TJ, Scoboria A, et al. The Emperor's new drugs: an analysis of antidepressant medication data submitted to the US Food and Drug Administration. *Prev Treatment*. 2002;5(23):1–11.

Psychology Research and Behavior Management

Publish your work in this journal

Psychology Research and Behavior Management is an international, peer-reviewed, open access journal focusing on the science of psychology and its application in behavior management to develop improved outcomes in the clinical, educational, sports and business arenas. Specific topics covered include: Neuroscience, memory & decision making; Behavior

modification & management; Clinical applications; Business & sports performance management; Social and developmental studies; Animal studies. The manuscript management system is completely online and includes a quick and fair peer-review system. Visit <http://www.dovepress.com/testimonials.php> to read real quotes from published authors.

Submit your manuscript here: <http://www.dovepress.com/psychology-research-and-behavior-management-journal>

Dovepress