



## Poor prognostic significance of *Mycobacterium tuberculosis* infection during bortezomib-containing chemotherapy in patients with multiple myeloma

Jae-Sook Ahn<sup>1\*</sup>, Sung Yoon Rew<sup>1\*</sup>, Deok-Hwan Yang<sup>1</sup>, Sung-Hoon Jung<sup>1</sup>, Seung-Ji Kang<sup>2</sup>, Mi-Young Kim<sup>1</sup>, Seung-Shin Lee<sup>1</sup>, Yeo-Kyeoung Kim<sup>1</sup>, Hyeoung-Joon Kim<sup>1</sup>, Je-Jung Lee<sup>1,3</sup>

Departments of <sup>1</sup>Hematology-Oncology and <sup>2</sup>Infectious Disease, Chonnam National University Hwasun Hospital, Hwasun, <sup>3</sup>The Brain Korea 21 Project, Center for Biomedical Human Resources at Chonnam National University, Gwangju, Korea

p-ISSN 2287-979X / e-ISSN 2288-0011  
<http://dx.doi.org/10.5045/br.2013.48.1.35>  
**Blood Res 2013;48:35-9.**

Received on August 16, 2012  
Revised on January 23, 2013  
Accepted on February 13, 2013

\*Jae-Sook Ahn and Sung Yoon Rew contributed equally to this work.

**Correspondence to**  
Je-Jung Lee, M.D., Ph.D.  
Department of Hematology-Oncology,  
Chonnam National University Hwasun  
Hospital, 322, Seoyang-ro, Hwasun 519-763,  
Korea  
The Brain Korea 21 Project, Center for  
Biomedical Human Resources at Chonnam  
National University, Gwangju, Korea  
Tel: +82-61-379-7638  
Fax: +82-61-379-7628  
E-mail: drjejung@chonnam.ac.kr

© 2013 Korean Society of Hematology

### Background

Bortezomib administration leads to a transient decrease in CD4<sup>+</sup> T cells, increasing the susceptibility to opportunistic infections. The activation and proliferation of CD4<sup>+</sup> T cells are particularly important in the host's defense against tuberculosis infection. The aim of this study was to determine the incidence and clinical significance of tuberculosis infection in patients with multiple myeloma (MM) treated with a bortezomib-containing regimen.

### Methods

We retrospectively investigated the incidence of *Mycobacterium tuberculosis* in 115 patients with MM who were given a bortezomib-containing regimen and studied the disease prognosis.

### Results

All patients received chemotherapy prior to bortezomib administration, and the median duration from diagnosis to bortezomib administration was 12.4 months (range, 0.2–230). We diagnosed tuberculosis in 8 patients (8/115, 7%): 7 patients had a pulmonary granulomatous lesion prior to chemotherapy and 1 developed reactivation of tuberculosis, but none of them died of uncontrolled tuberculosis infection. In 50% of patients with tuberculosis, bortezomib-containing therapy was interrupted. This resulted in significantly lower response rates to the bortezomib-containing therapy ( $P < 0.05$ ) and significantly shorter overall survival times amongst tuberculosis vs. non-tuberculosis patients ( $P = 0.017$ ).

### Conclusion

Tuberculosis infection was not uncommon among the patients with MM who were treated with bortezomib-containing therapy, and tuberculosis infection in these patients resulted in an interruption of bortezomib administration, which significantly affected patient outcomes. Therefore, early diagnosis and treatment of tuberculosis infection are critical to avoid worsening outcomes in such patients.

**Key Words** Bortezomib, *Mycobacterium tuberculosis*, Multiple myeloma

## INTRODUCTION

Tuberculosis (TB), caused by an infection of *Mycobacterium tuberculosis*, is the the most common cause of death from a single infectious agent among adults. Approximately one-third of the world's population (2 billion people) is

thought to have latent *M. tuberculosis*, while an estimated 9 million people develop active disease from *M. tuberculosis* every year [1, 2]. The progression from latent to active TB commonly occurs in immunocompromised patients and is mainly related to dysfunctional cell-mediated immunity. Moreover, hematologic malignancies such as leukemia or lymphoma are thought to be risk factors for TB infection

during cytotoxic chemotherapy [3]. Multiple myeloma (MM) is known to be associated with the immune abnormality hypogammaglobulinemia, which primarily affects humoral immunity. Recent studies suggested that the number of CD4<sup>+</sup> T cells in MM patients is reduced at initial diagnosis and that the decline in CD4<sup>+</sup> T-cell number was more severe in patients with refractory MM [4]. In addition, chemotherapeutic regimens for MM are known to induce immunosuppression.

Bortezomib is a proteasome inhibitor and one of the novel agents used in the treatment of MM. Bortezomib is known to induce apoptosis in rapidly proliferating and neoplastic cells, and a recent study showed that bortezomib prevents the activation of nuclear factor (NF)-kappa B. This leads to the inhibition of T-cell activation, including that of CD4<sup>+</sup> T cells, which fulfill essential immune functions [5, 6]. Activation and proliferation of CD4<sup>+</sup> T cells are crucial to the host's defense against TB infection [7]; thus, the suppression of T-cell immunity resulting from bortezomib-containing treatments potentially increases the risk of TB in MM patients [8]. The aim of our study was to investigate the incidence of TB in MM patients treated with a bortezomib-containing regimen.

## MATERIALS AND METHODS

We retrospectively investigated the incidence of TB infection in 115 patients diagnosed with MM, who were treated with bortezomib-containing salvage chemotherapy between November 2004 and July 2010. Eighty-two patients received treatment with bortezomib (1.3 mg/m<sup>2</sup> i.v. on days 1, 4, 8, and 11), cyclophosphamide (150 mg/m<sup>2</sup> orally on days 1–4), thalidomide (50–100 mg/day orally every day), and dexamethasone (20 mg/m<sup>2</sup> i.v. on days 1, 4, 8, and 11 every 3 weeks) (Vel-CTD), while 33 patients were given Vel-CD; Vel-CD is similar to Vel-CTD but does not contain thalidomide [9]. We retrospectively reviewed the medical records, including the clinical history, chest radiographs, and computed tomography (CT) scans prior to bortezomib-containing chemotherapy to assess evidence of previous TB infection and possible reactivation of the disease in the patients. TB was diagnosed on the basis of respiratory symptoms, chest CT scans, sputum *M. tuberculosis* culture, or acid-fast bacillus microscopy. Bronchoalveolar lavage or transbronchial biopsy was also performed for the diagnostic work-up in some patients suspected of having TB. We then investigated the clinical outcome, the control of myeloma tumor burden, and the cumulative dose of bortezomib in MM patients with a confirmed diagnosis of TB. We used the International Myeloma Working Group (IMWG) uniform response criteria to assess the treatment response in MM patients [10].

Categorical data and continuous variables were assessed using Fisher's exact and the Mann-Whitney *U*-tests, respectively. Overall survival (OS) was defined as the initiation of bortezomib-containing treatment to the date of the last follow-up or death. OS was analyzed using Kaplan-

Meier survival curve estimates, and the differences between patients with (TB+) and without TB (TB-) was compared using stratified log-rank tests. A value of  $P < 0.05$  was considered statistically significant, and 95% confidence intervals were reported. All statistical analyses were performed using Statistical Package for the Social Sciences version 17.0 (SPSS, Chicago, IL, USA).

## RESULTS

The median age of patients was 63 years (range, 39–82 years). All patients received chemotherapy prior to the initiation of a bortezomib-containing regimen, and the median number of prior regimens was 1 (range, 1–4). Patients received a median of 8 (range, 1–22) cycles of bortezomib-containing salvage chemotherapy. The median duration from diagnosis of MM to the bortezomib-containing chemotherapy was 12.4 months (range, 0.2–230 months), and 24% of patients previously received autologous stem cell transplantation (Table 1). Neither interferon- $\gamma$  release assay (IGRAs) nor TB skin test was performed prior to the initiation of bortezomib-containing therapy. All patients were routinely evaluated for TB infection using simple chest radiography at the start of bortezomib-containing salvage chemotherapy, and 13 (11.3%) of the 115 patients underwent chest CT for the evaluation of associated lung abnormalities. One patient was diagnosed with active pulmonary TB prior to receiving bortezomib-containing chemotherapy, while 8 (7%) of 115 patients were diagnosed with TB infection during bortezomib-containing treatment (Table 1). The median duration from the start of bortezomib-containing treatment to the confirmed diagnosis was 58 days (range, 7–247 days). In all the patients who were diagnosed with TB during bortezomib-containing treatment, pulmonary infiltration was detected using chest CT. In 5 of these patients, TB infection was documented through sputum culture and in 1 patient, through sputum acid-fast bacillus microscopy. Two patients were diagnosed without bacteriologic confirmation because it was not possible to perform bronchoscopic evaluation due to grade 4 asthenia; nevertheless, the typical characteristics of TB on CT, such as bronchiectasis and centrilobular nodules with branching linear structures (tree-in-bud opacities) were observed. In addition, clinical symptoms were consistent with TB, and these patients did not have evidence of other non-TB diseases. Seven of the 115 patients showed signs of previous pulmonary granulomatous lesions at diagnosis of MM, but only 1 patient experienced reactivation of TB during bortezomib treatment. The baseline characteristics of patients enrolled in the study are reported in Table 1.

There was no statistical difference in age, performance status, paraprotein subtype, stage at the start of bortezomib-containing chemotherapy, and prior treatment between patients with (TB+) or without TB infection (TB-). The male gender was more frequently associated with TB+ ( $P=0.02$ ). The median duration from the diagnosis of MM to the initiation of a bortezomib-containing regimen was 12.4 months

**Table 1.** Patient characteristics and the results of bortezomib-containing chemotherapy in patients with and without tuberculosis infection.

Characteristics	Total No.	TB (-) group	TB (+) group	P <sup>a)</sup>
<i>Characteristics at start of bortezomib-containing chemotherapy</i>				
Number of patient	115	107	8	
Median age, years (range)	66 (41–82)	66 (43–82)	68 (41–78)	0.89
Gender, male, N (%)	55 (48)	48 (46)	7 (88)	0.02
ECOG performance status, N (%)				0.25
0	51 (44)	49 (46)	2 (25)	
1	35 (31)	33 (31)	2 (25)	
2	21 (18)	17 (16)	4 (50)	
3	8 (7)	8 (7)	0	
Months from diagnosis, median (range)	12.4 (0.2–230)	13.1 (0.2–230)	12.4 (0.2–28.3)	0.28
Paraprotein type, N (%)				
IgG	67 (58)	63 (59)	4 (50)	
IgA	28 (24)	25 (23)	3 (38)	
Light chain (kappa or lambda)	20 (18)	19 (18)	1 (12)	0.75 <sup>b)</sup>
ISS stage, N (%)	N=113	N=105	N=8	0.25
I	62 (55)	60 (57)	2 (25)	
II	35 (31)	30 (29)	5 (63)	
III	16 (14)	15 (14)	1 (12)	
Prior treatment regimen, median (range)	1 (1–4)	1 (1–4)	2 (1–3)	0.83
Prior autologous stem cell transplantation, N (%)	26 (24)	25 (23)	1 (12)	0.48
Prior thalidomide treatment, N (%)	96 (84)	90 (84)	6 (75)	0.50
<i>Result of bortezomib-combined chemotherapy</i>				
No. of bortezomib-based cycles, median (range)	8 (1–22)	8 (1–22)	4 (1–9)	0.051
Bortezomib based chemotherapy				0.57
Vel-CTD	82 (71)	77 (72)	5 (63)	
Vel-CD	33 (29)	30 (28)	3 (37)	
Bortezomib cumulative dose (mg/m <sup>2</sup> )	35.0 (3.9–114.4)	36.8 (3.9–114.4)	18.4 (11.4–41.6)	0.062
Best treatment response				
≥ CR	53 (46)	53 (49)	0	0.007
≥ VGPR	61 (53)	60 (56)	1 (12)	0.017
≥ PR	94 (84)	92 (86)	5 (62)	0.078
≤ SD	16 (16)	15 (14)	3 (38)	

<sup>a)</sup>P value is the comparison according to the tuberculous infection. <sup>b)</sup>P value is the comparison according to the intact immunoglobulin versus light chain disease.

Abbreviations: TB, tuberculosis; ECOG, Eastern Cooperative Oncology Group; ISS, international staging system; Vel-CD, bortezomib, cyclophosphamide, and dexamethasone; Vel-CTD, vel-CD and thalidomide; CR, complete response; VGPR, very good partial response; PR, partial response; SD, stable disease.

in TB+ patients and 13.1 months in TB- patients ( $P=0.28$ ). There was no difference according to the treated combination chemotherapies between groups (Table 1). All TB+ patients were treated with combination of isoniazid, ethambutol, rifampicin, and pyrazinamide (HERZ), and the intention was to treat all patients with this anti-TB regimen for a period of 6 months. However, all but 3 of the TB+ patients died of disease progression within the 6-month treatment period (Table 2), and only the surviving 3 completed the 6-month anti-TB regimen. None of the patients died of uncontrolled pulmonary TB infection; however, 4 patients had to discontinue bortezomib treatment because of grade 3 or 4 asthenia. TB+ patients received a median of 4 cycles of bortezomib-containing chemotherapy, and the cumulative dose of bortezomib was 18.4 mg/m<sup>2</sup> (range, 11.4–41.6 mg/m<sup>2</sup>). The TB+ patients tended to interrupt bortezomib-containing therapy. Patients who interrupted bortezomib-containing therapy experienced MM progression within a few months. The best response rate was significantly lower in the TB+ group (Table 1). The median duration of follow-up for all patients was 21.1 months (range, 5.5–75 months). The me-

dian OS was 11.0±2.6 months (95% CI: 5.8–16.1 months) and 30.9±6.1 months (95% CI: 18.9–42.9 months) in the TB+ and TB- groups, respectively ( $P=0.017$ ) (Fig. 1).

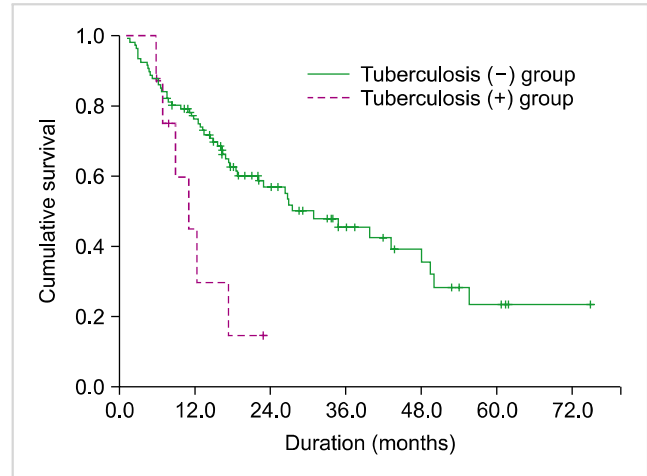
## DISCUSSION

The treatment outcomes of novel agents for MM are promising, but these therapies are thought to have specific toxicities that differ from traditionally used agents. Bortezomib is known to have important adverse effects, including peripheral neuropathy, myelosuppression, and gastrointestinal disturbances. Heider *et al.* [6] reported a decline of CD4<sup>+</sup> T cells in 77% of MM patients who were treated with bortezomib. In addition, the median CD4<sup>+</sup> lymphocyte count significantly declined in all patients. Considering these results, the occurrence of herpes zoster in patients with MM treated with bortezomib could be explained by the decline in CD4<sup>+</sup> counts. The effect of bortezomib treatment could potentially also influence the susceptibility of these patients to infections associated with low CD4<sup>+</sup> T cells, such as *M.*

**Table 2.** Characteristics of multiple myeloma patients diagnosed with tuberculosis infection.

Age/ Gender	Type (heavy/ light chain)	ISS at start of Vel	Prior chemotherapy regimens	ISS at Vel Tx	Vel Tx regimen	Duration of Bortezomib Tx at TB Dx (days)	Tx responses at TB Dx.	Reactivation	Method of Dx	Location of lung infiltration	MM courses	Overall survival after TB Dx (months)
77/M	A/k	III	CTD->TD maintenance	II	Vel-CTD	39	VGPR	N	Chest CT, sputum culture	Upper>Lower	PD after additional one cycle Vel-CTD treatment	5.5 (died)
71/M	A/k	III	CTD->TD maintenance	II	Vel-CTD	235	PR	N	Chest CT	Upper & Lower	Interrupted further Tx due to asthenia	2.2 (died)
70/M	-/λ	II	Dexa	II	Vel-CD	58	SD	N	Sputum culture, chest CT	Upper>Lower	Interrupted further Tx due to asthenia	4.0 (died)
60/M	G/λ	II	VAD	II	Vel-CTD	55	SD	Y	Sputum culture, chest CT	Upper only	Changed the treatment regimen due to PD	21.2 (surviving)
71/M	G/λ	II	CD->TD	II	Vel-CTD	113	PR	N	Chest CT, AFB stain (+)	Upper only	Interrupted further Tx due to asthenia	13.8 (died)
68/F	A/λ	III	VAD	III	Vel-CD	247	PR	N	Sputum culture, chest CT	Upper>Lower	Interrupted further Tx due to asthenia	2.9 (died)
50/M	G/k	II	CTD	I	Vel-CD	7	PR	N	Chest CT	Upper<Lower	Auto-SCT after additional 3 <sup>rd</sup> Vel-CD treatment	7.6 (surviving)
71/M	A/k	III	MPT	III	Vel-CD	84	CR	N	Chest CT, sputum culture	Upper & Lower	PD after additional 4 <sup>th</sup> Vel-CD treatment	5.8 (died)

Abbreviations: M, male; F, female; DSS, Durie-Salmon stage; Dx, diagnosis; ISS, international staging system; Vel, bortezomib; CTD, cyclophosphamide, thalidomide, dexamethasone; TD, thalidomide, dexamethasone; dexa, dexamethasone; VAD, vincristine, adriamycin, dexamethasone; CD, cyclophosphamide, dexamethasone; MTP, melphalan, prednisolone, thalidomide; Tx, treatment; TB, tuberculosis; VGPR, very good partial response; PR, partial response; SD, stable disease; CR, complete remission; N, no; Y, yes; CT, computed tomography; AFB, acid-fast bacillus; MM, multiple myeloma; Auto-PBSCT, autologous stem cell transplantation.



**Fig. 1.** Overall survival analyses in multiple myeloma patients with or without tuberculosis infection during bortezomib-containing chemotherapy ( $P=0.017$ ).

tuberculosis infection [7]. We reviewed a large number of patients with MM who were treated with bortezomib-containing therapies. We found that the incidence of TB in bortezomib-treated patients (7%) was much greater than the annual incidence of TB in a general population aged 60–69 years (164.3 per 100,000 people) as reported by the Korea Centers for Disease Control and Prevention for 2007.

A limitation of our study was that bortezomib was administered in combination with other agents, and these agents may well have influenced patients' susceptibility to TB infection. Bortezomib was given in combination with thalidomide. Thalidomide is considered an adjuvant treatment for TB in some studies [11, 12], because it co-stimulates T lymphocytes and is thought to have a greater effect on CD8<sup>+</sup> than on CD4<sup>+</sup> T cells [13]. Bortezomib was also used with other immunosuppressant agents, specifically cyclophosphamide and dexamethasone. In this study, patients received low-dose cyclophosphamide (150 mg/m<sup>2</sup> on days 1–4, every cycle). A previous study showed that low-dose cyclophosphamide selectively depletes CD4<sup>+</sup>CD25<sup>+</sup> T cells [14]. Steroids are known to be an independent risk factor, and patients receiving a daily dose of ≥15 mg of corticosteroid for ≥1 month had an increased risk of developing TB [15]. To identify the influence of bortezomib on patients' susceptibility to TB infection, a direct comparison between patients who receive bortezomib and patients who receive steroid-containing salvage chemotherapy minus bortezomib is required [16].

In our study, 4 (50%) of the patients diagnosed with active pulmonary TB had interrupted consecutive treatment with bortezomib-containing regimens because of severe asthenia. This caused poor prognosis in all patients, even though 3 of the 4 patients showed a partial response to bortezomib-containing treatment at diagnosis with active pulmonary TB. In 2 patients, consecutive treatment of the bortezomib-containing regimen was interrupted for more than 5 weeks because of anti-TB treatment, and these patients

showed disease progression within 5 months after initiation of an anti-TB regimen. The remaining 2 patients received continuous treatment for MM, and they were alive at the last follow-up. Patients with TB tended to receive fewer cycles of chemotherapy and lower bortezomib cumulative dosages compared with patients without TB, although statistical significance was not reached. We speculate that fewer cycles of chemotherapy and lower bortezomib cumulative dosages would affect best response rates and survival in MM patients with TB. Our findings emphasize that effective screening and early diagnosis for pulmonary TB infection are important in the treatment of MM patients. We propose that chest radiography screening should be performed prior to bortezomib treatment for the detection of healed or active pulmonary TB lesions. Even though skin testing with purified protein derivative of tuberculin (TST) is widely used to screen latent *M. tuberculosis* infection, it has relatively low sensitivity and specificity and is not possible to discriminate between latent infection and active disease. IGRAs are more specific than TST in terms of less cross-reactivity with BCG vaccination [1, 17]. Therefore, screening with IGRAs for patients with MM prior to bortezomib-containing chemotherapy should be considered in the diagnosis of latent tuberculosis. In addition, isoniazid prophylaxis should be given, if the IGRAs screening test results are positive. A key factor in the diagnosis of TB is a high degree of suspicion. If patients show pulmonary symptoms and have radiologic findings of atypical pulmonary infiltration during bortezomib-containing chemotherapy, active TB should be suspected and early diagnostic procedures such as sputum examination and chest CT should be performed.

#### Authors' Disclosures of Potential Conflicts of Interest

No potential conflicts of interest relevant to this article were reported.

#### REFERENCES

- Mazurek GH, Jereb J, Vernon A, LoBue P, Goldberg S, Castro K. Updated guidelines for using interferon gamma release assays to detect mycobacterium tuberculosis infection - United States, 2010. *MMWR Recomm Rep* 2010;59:1-25.
- Dolin PJ, Raviglione MC, Kochi A. Global tuberculosis incidence and mortality during 1990-2000. *Bull World Health Organ* 1994;72:213-20.
- Wu CY, Hu HY, Pu CY, et al. Aerodigestive tract, lung and haematological cancers are risk factors for tuberculosis: an 8-year population-based study. *Int J Tuberc Lung Dis* 2011;15:125-30.
- Ogawara H, Handa H, Yamazaki T, et al. High Th1/Th2 ratio in patients with multiple myeloma. *Leuk Res* 2005;29:135-40.
- Berges C, Haberstock H, Fuchs D, et al. Proteasome inhibition suppresses essential immune functions of human CD4+ T cells. *Immunology* 2008;124:234-46.
- Heider U, Rademacher J, Kaiser M, Kleeberg L, von Metzler I, Sezer O. Decrease in CD4+ T-cell counts in patients with multiple myeloma treated with bortezomib. *Clin Lymphoma Myeloma Leuk* 2010;10:134-7.
- Flynn JL, Chan J. Immunology of tuberculosis. *Annu Rev Immunol* 2001;19:93-129.
- Schütt P, Brandhorst D, Stellberg W, et al. Immune parameters in multiple myeloma patients: influence of treatment and correlation with opportunistic infections. *Leuk Lymphoma* 2006;47:1570-82.
- Kim YK, Sohn SK, Lee JH, et al. Clinical efficacy of a bortezomib, cyclophosphamide, thalidomide, and dexamethasone (Vel-CTD) regimen in patients with relapsed or refractory multiple myeloma: a phase II study. *Ann Hematol* 2010;89:475-82.
- Rajkumar SV, Harousseau JL, Durie B, et al. Consensus recommendations for the uniform reporting of clinical trials: report of the International Myeloma Workshop Consensus Panel 1. *Blood* 2011;117:4691-5.
- Schoeman JF, Fieggen G, Sellar N, Mendelson M, Hartzenberg B. Intractable intracranial tuberculous infection responsive to thalidomide: report of four cases. *J Child Neurol* 2006;21:301-8.
- Stefan DC, Andronikou S, Freeman N, Schoeman J. Recovery of vision after adjuvant thalidomide in a child with tuberculous meningitis and acute lymphoblastic leukemia. *J Child Neurol* 2009;24:166-9.
- Gori A, Rossi MC, Marchetti G, et al. Clinical and immunological benefit of adjuvant therapy with thalidomide in the treatment of tuberculosis disease. *AIDS* 2000;14:1859-61.
- Motoyoshi Y, Kaminoda K, Saitoh O, et al. Different mechanisms for anti-tumor effects of low- and high-dose cyclophosphamide. *Oncol Rep* 2006;16:141-6.
- Jick SS, Lieberman ES, Rahman MU, Choi HK. Glucocorticoid use, other associated factors, and the risk of tuberculosis. *Arthritis Rheum* 2006;55:19-26.
- Engelhardt M, Kleber M, Udi J, et al. Consensus statement from European experts on the diagnosis, management, and treatment of multiple myeloma: from standard therapy to novel approaches. *Leuk Lymphoma* 2010;51:1424-43.
- Fauci AS, Braunwald E, Kasper DL, et al, eds. *Harrison's principles of internal medicine*. 17th ed. New York, NY: McGraw-Hill Medical, 2008:1006-20.