

## Review Article

# Meta-Analysis of the Effect of Honghua Injection in the Treatment of Coronary Heart Disease Angina Pectoris

Jiani Zhai , Zhaochen Ji , Xinyao Jin , Xuechen Du , Lujia Cao ,  
and Wenke Zheng 

Tianjin University of Traditional Chinese Medicine, Tianjin 301600, China

Correspondence should be addressed to Wenke Zheng; zhengwk2020@tjutcm.edu.cn

Received 27 December 2021; Revised 26 April 2022; Accepted 27 April 2022; Published 25 May 2022

Academic Editor: Daniel Dias Rufino Arcanjo

Copyright © 2022 Jiani Zhai et al. This is an open access article distributed under the Creative Commons Attribution License, which permits unrestricted use, distribution, and reproduction in any medium, provided the original work is properly cited.

**Objective.** To evaluate the effectiveness of honghua injection combined with western medicine in the treatment of coronary heart disease angina pectoris. **Methods.** Computer extensively searched PubMed, Cochrane Library, Embase, China Biomedical Archives (SinoMed), China Knowledge Network (CNKI), Chinese Journal Full-text Database (VIP), Wanfang Data Knowledge Service Platform (Wanfang), and collected randomized controlled trials (RCTs) of honghua injection combined with western medicine in the treatment of coronary heart disease angina pectoris. Use Review Manager5.3 software for meta-analysis. **Results.** 21 RCTs were included, involving 1894 participants. Meta-analysis shows that honghua injection combined with western medicine can significantly improve the clinical efficacy (OR = 4.03, 95% CI[2.96,5.49]), electrocardiographic efficacy (OR = 3.39, 95%CI[2.44, 4.70]), can significantly reduce total cholesterol (TC) levels (MD = -0.39, 95% CI[-0.47, -0.31]), triacylglycerol (TG) levels (MD = -0.45, 95% CI [-0.51, -0.39]), increase high-density lipoprotein cholesterol (HDL-C) levels (MD = 0.29,95%CI[0.26,0.32]), reduce low-density lipoprotein cholesterol (LDL-C) levels (MD = -0.59, 95%CI[-0.79, -0.38]). Five articles reported adverse reactions. **Conclusion.** Honghua injection combined with western medicine is more effective than western medicine alone in patients with coronary heart disease angina pectoris. More multicenter, large sample, high-quality RCTs are needed to provide evidence.

## 1. Introduction

According to a survey by the World Health Organization (WHO), one cause of global lifespan reduction is coronary atherosclerotic heart disease (CHD), referred to as coronary heart disease [1]. With economic developing, people's living habits have changed and the population is aging, the risk factors of coronary heart disease are becoming increasingly prominent. According to estimates, as of 2018, there were about 11 million patients with coronary heart disease in China [2], and the mortality rate continues to rise, becoming a major disease threatening human health. Epidemiological studies have shown that the overall prevalence of coronary heart disease is on the rise, the patient population tends to be younger, and the number of acute attacks is increasing year by year [3]. Coronary heart disease has many complications and dangerous diseases. If it is acute, it can develop into myocardial infarction, and in severe cases, it can cause

sudden death. Therefore, it is particularly critical to study its clinically effective treatment.

In the field of modern medicine, Coronary heart disease is usually caused by a single risk factor called "dyslipidemia," and the main factors that cause dyslipidemia are genetics, lifestyle, certain diseases (such as thyroid dysfunction and kidney disease) and medications [4]. The treatment of coronary heart disease often uses antiplatelet drugs, calcium antagonists, and other drugs, and symptomatic treatments such as anticoagulation, lipid regulation, blood pressure reduction, and vasodilation can significantly alleviate the clinical symptoms of patients. The effect of functional improvement is limited, and adverse drug reactions are prone to occur [5]. Traditional Chinese medicine believes that the pathogenesis of coronary heart disease is based on the right deficiency, and it is a process of intermixing with Yin and cold, blood stasis, qi stagnation, phlegm obstruction and other evils [6]. Clinical observations have shown that,

compared with simple chemical treatment, using the appropriate treatment plan of traditional Chinese medicine preparations combined with conventional chemical drugs has a significant effect, and it has a better effect in improving the quality of life of patients and reducing side effects [7].

Honghua injection is an injection made by processing and extracting honghua. It is a clear liquid from yellowish red to reddish brown. At present, it has been widely used in various diseases, such as hypertension, coronary heart disease, pulmonary heart disease, cerebral infarction, diabetes, chronic renal failure, and primary dysmenorrhea [8]. Relevant studies have shown that honghua injection has the effects of improving blood concentration, anticoagulation, and improving microcirculation [9], and the pharmacological effects of honghua for promoting blood circulation, clearing menstruation, removing blood stasis and relieving pain are the expansion of blood vessels and anti-myocardial ischemia, lowering blood lipids, exciting the uterus, anti-coagulation, anti-thrombosis, and other effects [10, 11].

Relevant clinical trials have initially shown that honghua injection combined with western medicine can improve the treatment effect of coronary heart disease angina pectoris. However, it has not been systematically evaluated in the world. In this study, methods such as meta-analysis were used to systematically evaluate the effectiveness of honghua injection combined with western medicine in the treatment of coronary heart disease angina pectoris, which is convenient to guide clinical use.

## 2. Materials and Methods

**2.1. Literature Search.** Computer search of PubMed, Cochrane Library, Embase, China Biomedical Archives (SinoMed), China Knowledge Network (CNKI), Chinese Journal Full-text Database (VIP), Wanfang Data Knowledge Service Platform (Wanfang) database for the RCT literature of honghua injection in the treatment of coronary heart disease angina pectoris, the search time is from the establishment of the database to October 2021. The Chinese search terms are “coronary atherosclerotic heart disease,” “coronary heart disease,” “coronary syndrome,” “angina pectoris,” “honghua injection,” “safflower injection” and “random.” The English search terms are “coronary disease,” “coronary artery disease,” “random,” “Honghua injection,” “Honghua injection” and so on.

**2.2. Inclusion Criteria.** (1) The type of research is RCT. (2) The subjects of the study are patients who meet the domestic and foreign consensus criteria for diagnosing coronary heart disease angina pectoris, regardless of age and gender. (3) The control group is treated with conventional western medicine, and the test group is treated with honghua injection on the basis of the control group. (4) The language is Chinese or English.

**2.3. Exclusion Criteria.** (1) Documents published repeatedly. (2) Documents for which data cannot be extracted. (3) In addition to honghua injection and conventional western

medicine, the treatment group also used other traditional Chinese medicine injections. (4) The treatment group used honghua extract and other similar products.

### 2.4. Outcome Indicators

- (1) Clinical efficacy. It meets the “Criteria for Evaluating the Curative Effect of Coronary Heart Disease Angina Pectoris and ECG.” Significant effect: After treatment, the patient’s ECG returned to normal or almost normal or reached the standard of marked effect, or the symptoms of angina pectoris disappeared or the number of angina pectoris was reduced by more than 80%, nitroglycerin consumption was reduced by more than 80%, or the main clinical symptoms improved within 10 days or the chest pain symptoms disappeared or Reduced by 90%; Effective: After treatment, the patient’s angina pectoris symptoms were significantly relieved, the number of angina pectoris was reduced by more than half, nitroglycerin consumption was reduced by 50% to 80%, the ECG improvement reached the effective standard or the main clinical symptoms improved within 10 to 20 days, or chest pain symptoms Improved by more than 50%; ineffective: After treatment, the patient’s angina pectoris symptoms are not improved or even worsened, the ECG is the same as before treatment or worse than before treatment, or the number of angina pectoris episodes, nitroglycerin consumption is reduced by less than 50%, or chest pain symptoms are not improved.
- (2) Efficacy of ECG. It meets the “Criteria for Evaluating the Efficacy of Coronary Heart Disease Angina Pectoris and ECG.” Markedly effective: ST-segment after treatment, T wave returned to normal or roughly normal range; effective: ST-segment of ECG after treatment increased by more than 0.05 mV compared to before treatment but did not reach the normal level, the inverted T wave changes in the main lead became shallow or changed two-way; ineffective: After treatment, the ECG is similar to that before treatment or the ST segment is lower than before treatment by more than 0.05 mV, and the T wave is deepened or not improved.
- (3) Blood lipid indicators [including total cholesterol (TC), triacylglycerol (TG), high-density lipoprotein cholesterol (HDL-C), low-density lipoprotein cholesterol (HDL-C)].
- (4) Adverse reactions.

**2.5. Data Extraction.** Two researchers independently screened the literature, extracted data, and cross-checked according to preset inclusion and exclusion criteria. If there is any objection, the third researcher will discuss and resolve it through negotiation. Establish an Excel data extraction table, which mainly includes: the source of the included literature (name of the first author, year of publication),

sample size, general information of participants (such as gender, age, etc.), intervention measures, treatment process and outcome indicators.

**2.6. Bias Risk Assessment.** Use the Cochrane Risk of Bias Tool to assess the risk of bias for each study. The tool considers the following factors: (a) the random sequence generation method used; (b) the allocation concealment method used; (c) the blinding method used (participants and personnel); (d) the blinding method used (result evaluator); (e) incomplete result reporting; (f) selective reporting of research results and (g) other possible sources of bias. Each entry is judged as low risk, high risk, or unclear risk of bias.

**2.7. Statistical Analysis.** RevMan 5.3 software was used for statistical analysis of the included literature research data, and the count data used risk ratio (RR) or odds ratio (OR), continuous variable data was expressed as mean difference (MD), and 95% CI indicated that the difference was statistically significant. If  $I^2 \leq 50\%$ , it indicates that the heterogeneity is small, and the fixed effects model (FEM) is used; If  $I^2 > 50\%$ , it indicates that the heterogeneity is large, first determine the reason for the heterogeneity, conduct a sensitivity analysis to eliminate the possible source of the heterogeneity, if the heterogeneity is still large, then use the random effects model (REM). Or use subgroup analysis for further analysis.

### 3. Results

**3.1. Literature Search Results.** As shown in Figure 1, 561 documents were initially retrieved, of which 290 studies were eliminated as duplicates. After screening by title, abstract, and full text, a total of 21 studies were included in this meta-analysis (Figure 1).

**3.2. Incorporation of the Basic Features of the Literature.** All included studies were published in China, and a total of 1894 patients diagnosed with coronary heart disease and angina pectoris were included, including 969 in the treatment group and 925 in the control group. 17 outcome index studies reported clinical efficacy [12–28], 11 studies reported ECG efficacy [14, 17, 19, 21–25, 27–29], 4 studies reported TC levels [16, 30–32], 4 studies reported TG levels [16, 30–32], 4 studies reported HDL-C levels [16, 30–32], 5 studies reported LDL-C levels [16, 30–32], 5 studies reported adverse reactions or events [12, 17, 23, 27, 28]. The control group was treated with western medicine, and the experimental group was treated with honghua injection combined with the control group. The course of treatment was 14–28 days. The characteristics of all included RCTs are summarized in Table 1.

**3.3. Risk of Bias in the Included Literature.** Nineteen studies [13–22, 29, 30, 32] only described “random grouping” and were considered unclear risk, and 1 study was included in the group order odd and even numbers were randomly

divided into treatment group and control group, which were considered high risk. One study was divided into treatment group and control group according to the random number table, which was considered low risk. None of the included studies described allocation concealment and blinding, so they were assessed as unclear risks. The included studies reported that the outcome data was complete and there was no selective reporting, so the reporting bias was evaluated as low risk. None of the included trials described whether there were other potential biases, so the risk was determined to be unclear. The results of the risk of bias assessment are shown in Figure 2.

#### 3.4. Research Results

**3.4.1. Clinical Efficacy.** Meta-analysis results showed that there was no heterogeneity among the 17 studies ( $P = 0.999$ ,  $I^2 = 0\%$ ), so the fixed effects model was used, and the difference was statistically significant (OR = 4.03, 95%CI [2.96, 5.49],  $P < 0.00001$ ), indicating that the clinical effect of honghua injection combined with western medicine in the treatment of coronary heart disease angina pectoris is better than that of the western medicine treatment group (Figure 3).

**3.4.2. Efficacy of ECG.** Eleven studies have reported the efficacy of ECG. After the heterogeneity test, the heterogeneity among the studies were small ( $I^2 = 27\%$ ,  $P = 0.18$ ), so a fixed-effect model was used. The results showed that honghua injection combined with western medicine was better than the control group in improving the efficacy of ECG, and the difference was statistically significant (OR = 3.39, 95%CI [2.44, 4.70],  $P < 0.00001$ ) (Figure 4).

**3.4.3. TC.** Four studies reported TC. After the heterogeneity test, the heterogeneity among the studies is small ( $I^2 = 4\%$ ,  $P = 0.37$ ), so the fixed effects model was used, and the difference was statistically significant (MD = -0.39, 95%CI [-0.47, -0.31],  $P < 0.00001$ ) indicates that the TC levels of honghua injection combined with western medicine in the treatment of coronary heart disease angina pectoris is better than that in the western medicine treatment group (Figure 5).

**3.4.4. TG.** Four studies reported TG. After the heterogeneity test, there was no heterogeneity between the studies ( $I^2 = 0\%$ ,  $P = 0.95$ ), so the fixed effects model was used, and the difference was statistically significant (MD = -0.45, 95%CI [-0.51, -0.39],  $P < 0.00001$ ) indicates that the TG levels of honghua injection combined with western medicine in the treatment of coronary heart disease angina pectoris is better than that in the western medicine treatment group (Figure 6).

**3.4.5. HDL-C.** 4 studies reported HDL-C. After the heterogeneity test, there was no heterogeneity between the studies ( $I^2 = 0\%$ ,  $P = 0.47$ ), so the fixed effects model was

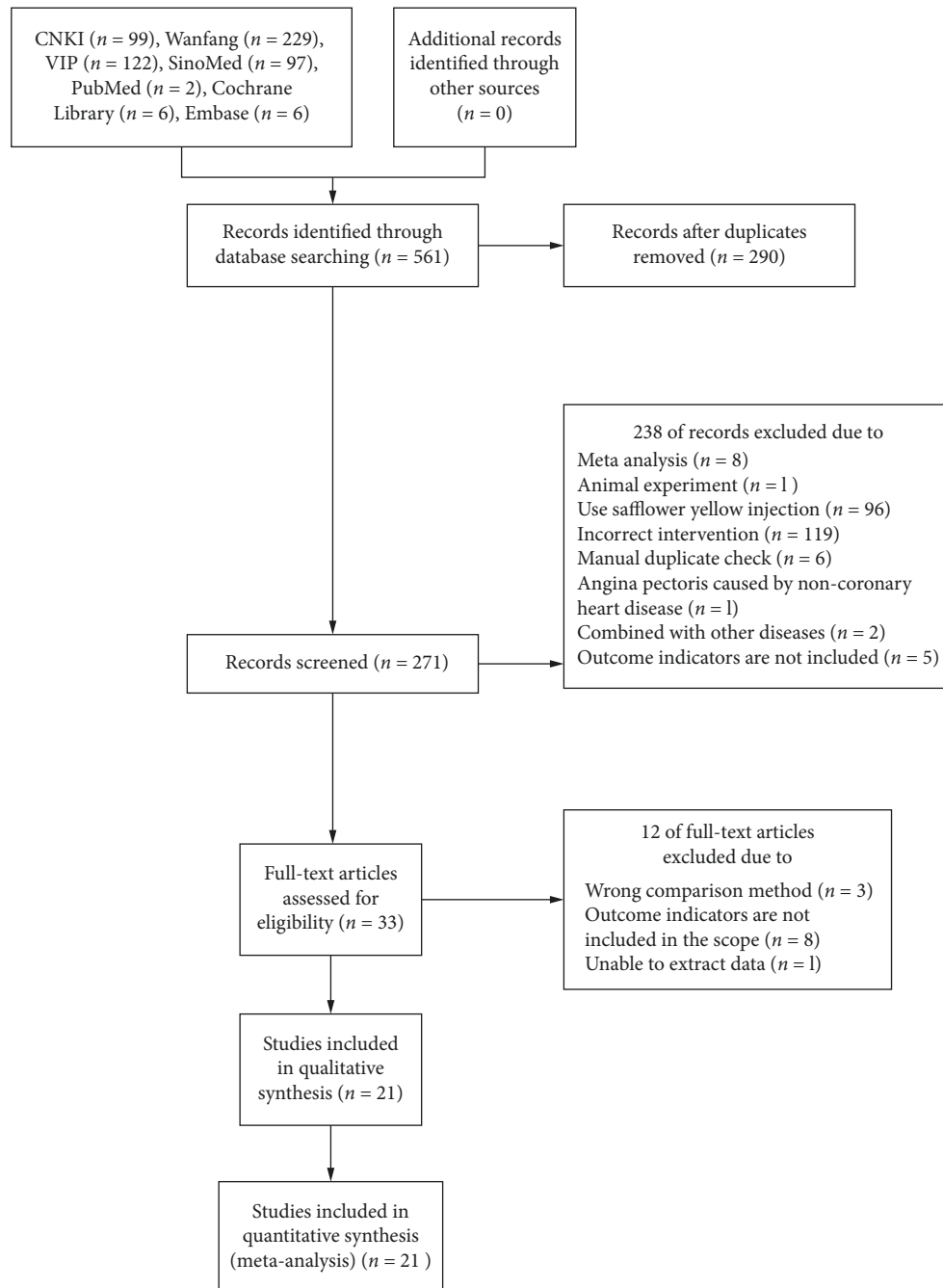


FIGURE 1: Flowchart of the literature retrieval.

used, the difference was statistically significant (MD = 0.29, 95% CI [0.26, 0.32],  $P < 0.00001$ ), indicating that the HDL-C levels of honghua injection combined with western medicine is better than that of the western medicine treatment group (Figure 7).

**3.4.6. LDL-C.** 4 studies reported LDL-C. After the heterogeneity test, the heterogeneity between the studies was relatively large ( $I^2 = 86\%$ ,  $P < 0.0001$ ). The sensitivity was analyzed, Excluding the literature one by one for heterogeneity test, the results show that the heterogeneity was still large, so the random effects model was used, and the

difference was statistically significant (MD = -0.59, 95% CI [-0.79, -0.38],  $P < 0.00001$ ) (Figure 8).

**3.4.7. Adverse Reactions.** A total of 5 studies [12, 17, 23, 27, 28] reported adverse reactions. 2 studies [25, 29] reported no adverse reactions, 14 studies [13–16, 18–22, 24, 26, 30–32] did not mention adverse reactions (Table 2).

**3.5. Publication Bias.** The clinical efficacy of honghua injection combined with western medicine in the treatment of

TABLE 1: Characteristics of included studies.

Included in the study	Sample size		Gender: (male/female)		Average age (years)		T	C	Intervention	Course of treatment	Outcome indicators
	T	C	T	C	T	C					
Zhao 2019 [12]	42	40	24/18	21/19	63.8 ± 7.5	64.2 ± 7.2	Honghua injection + C		Simvastatin	28 d	1
Zhang 2018 [13]	98	98	51/47	52/46	62.2 ± 5.8	61.7 ± 6.1	Honghua injection + C		Basic treatment, including oxygen inhalation and sublingual administration of nitroglycerin tablets; for severe cases, calcium antagonists to prevent angina pectoris and low molecular weight heparin to strengthen anticoagulation; aspirin tablets to prevent platelet aggregation; treatment with angiotensin converting enzyme inhibitors. Isosorbide mononitrate injection	14 d	1
Cao 2017 [30]	39	39	23/16	24/15	60.4 ± 10.4	60.9 ± 10.9	Honghua injection + C		Atorvastatin, all patients receive oxygen therapy, bed rest, oral $\beta$ -blockers, aspirin and other drugs	15 d	3, 4, 5, 6
Cao 2016 [31]	60	60	34/26	32/28	62.4 ± 11.6	61.9 ± 12.3	Honghua injection + C		All are given conventional treatment, the main drugs are nitrates, statins, antiplatelet aggregation drugs and $\beta$ -receptor blockers, of which atorvastatin is used for statins	14 d	3, 4, 5, 6
To 2014 [14]	30	30	—	—	—	—	Honghua injection + C		Conventional treatment of coronary heart disease	14 d	1, 2
Wang 2014 [15]	30	30	16/14	13/17	53.2 ± 1.4	56.5 ± 1.4	Honghua injection + C		Aspirin enteric-coated tablets, metoprolol tartrate, nifedipine sustained-release tablets, statins lipid-lowering drugs. Isosorbide mononitrate injection	15 d	1
Liao 2013 [16]	50	50	—	—	—	—	Honghua injection + C		Aspirin enteric-coated tablets	28 d	1, 3, 4, 5, 6
Lin 2012 [32]	35	35	21/14	20/15	62.7 ± 5.8	62.4 ± 5.9	Honghua injection + C		Nitrate, lipid-lowering, antiplatelet, beta blocker	14 d, 28 d	3, 4, 5, 6
Wang 2012 [17]	32	32	17/15	19/13	56.4	55.4	Honghua injection + C		Basic treatment is given, including oxygen inhalation, aspirin to prevent platelet aggregation, nitrate ester drugs to dilate coronary arteries, etc., and $\beta$ -receptor blockers, angiotensin converting enzyme inhibitors or angiotensin II receptor antagonists can be selected according to the needs of the disease medicine etc	14 d	1, 2
Li 2012 [18]	50	50	34/16	32/18	—	—	Honghua injection + C		Both groups received conventional treatment, namely oral enteric-coated aspirin, isosorbide, metoprolol	14 d	1
Li 2012 [19]	32	32	21/11	23/9	—	—	Honghua injection + C		Aspirin enteric-coated tablets	14 d	1, 2
Xiao 2012 [20]	40	40	22/18	21/19	58.0	42.0	Honghua injection + C		Routine oral long-acting isolaridine, aspirin; and when necessary, calcium ion antagonists, $\beta$ -receptor blockers and other drug treatments, such as sublingual nitroglycerin when angina pectoris occurs	14 d	1
Su 2011 [21]	50	50	27/23	26/24	67.4	68.2	Honghua injection + C		Conventional treatment of coronary heart disease	14 d	1, 2
Ai 2011 [29]	48	48	—	—	—	—	Honghua injection + C		Nifedipine	14 d	2
Fan 2010 [22]	80	80	46/34	44/36	61.8	60.5	Honghua injection + C		Enteric-coated aspirin, medicinal isosorbide mononitrate, simvastatin capsules	28 d	1, 2
Zhang Jilei 2010 [23]	46	46	24/21	23/22	66.9	68.7	Honghua injection + C		The conventional treatment of coronary heart disease and angina pectoris includes oxygen inhalation, isosorbide dinitrate tablets, enteric-coated aspirin tablets, etc., and $\beta$ -receptor blockers and angiotensin converting enzyme inhibitors are selected according to the condition	14 d	1, 2
Zhang Jingru 2010 [24]	41	41	26/15	28/13	59.0	52.0	Honghua injection + C		Isosorbide dinitrate, betaloc, enteric-coated aspirin and diltiazem	30 d	1, 2
Cheng 2009 [25]	68	40	38/30	24/16	59.1	58.7	Honghua injection + C		Nitrate (mainly intravenous drip of nitroglycerin) low-dose aspirin; calcium antagonist, beta blocker	14 d	1, 2

TABLE 1: Continued.

Included in the study	Sample size		Gender: (male/female)		Average age (years)		Intervention		Course of treatment	Outcome indicators
	T	C	T	C	T	C	T	C		
Du 2009 [26]	30	30	—	—	—	—	Honghua injection + C	Conventional treatment group. Treatment includes aspirin, nitrates, $\beta$ -receptor blockers, calcium antagonists, etc.	10 d	1
You 2002 [27]	36	30	22/14	18/12	58.3 $\pm$ 8.1	56.4 $\pm$ 7.6	Honghua injection + C	Routine oral long-acting isolaridine; aspirin; and when necessary, calcium ion antagonists, $\beta$ -receptor blockers and other drug treatments, such as sublingual nitroglycerin when angina pectoris occurs	14 d	1, 2
Zhang 2002 [28]	32	24	—	20/4	—	—	Honghua injection + C	Conventional treatment of coronary heart disease	15 d	1, 2

Note: 1. Clinical efficacy; 2. ECG efficacy; 3. Total cholesterol (TC); 4. Triacylglycerol (TG); 5. High-density lipoprotein cholesterol (HDL-C); 6. Low-density lipoprotein cholesterol (LDL-C). T: treatment group; C: control group.

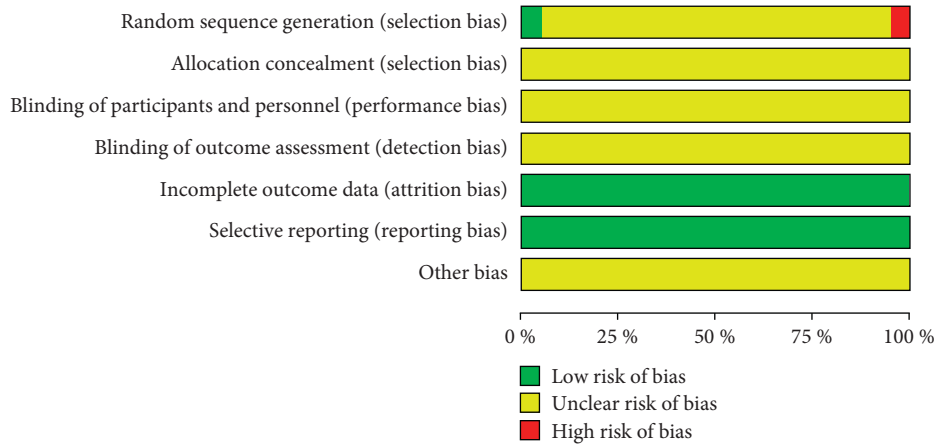


FIGURE 2: Risk and bias graph.

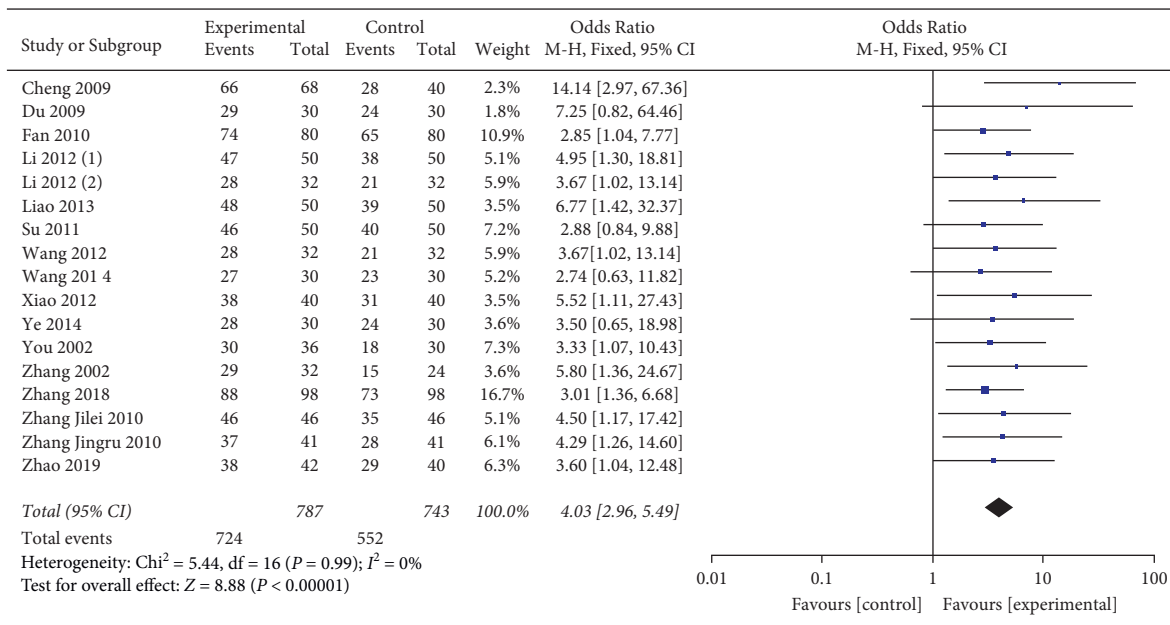


FIGURE 3: Forest plots of clinical efficacy.

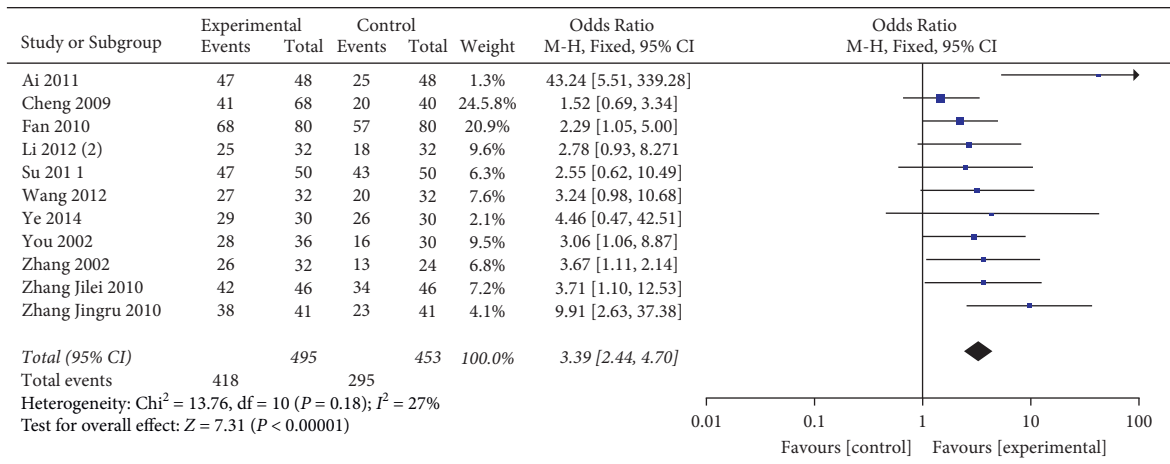


FIGURE 4: Forest plots of ECG efficiency.

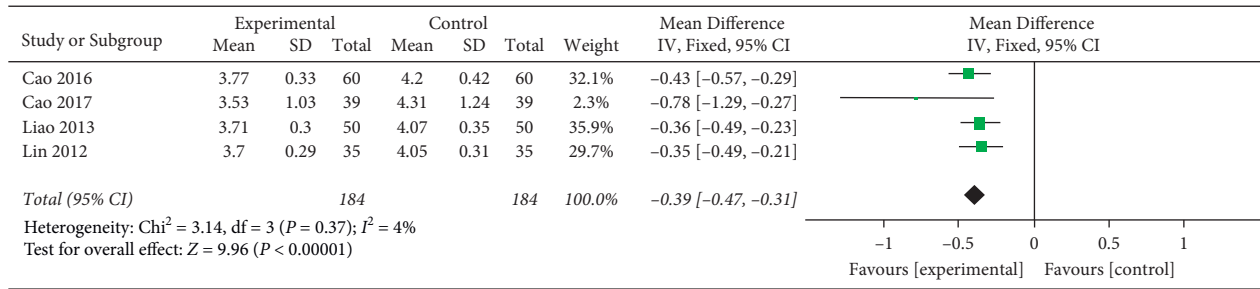


FIGURE 5: Forest plots of TC levels.

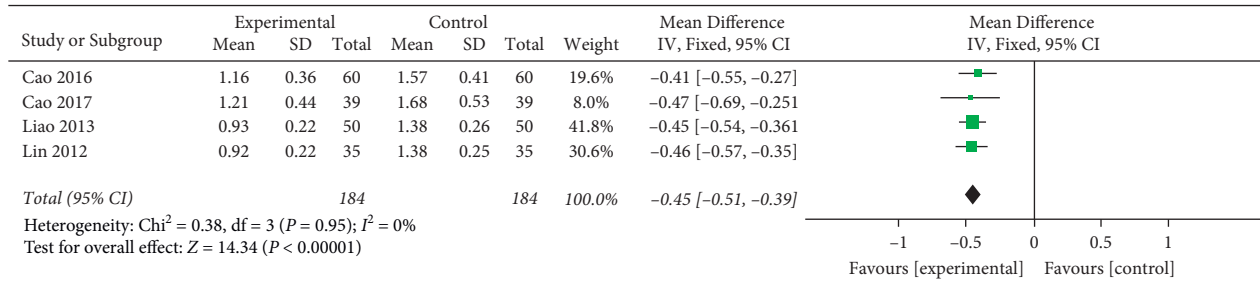


FIGURE 6: Forest plots of TG levels.

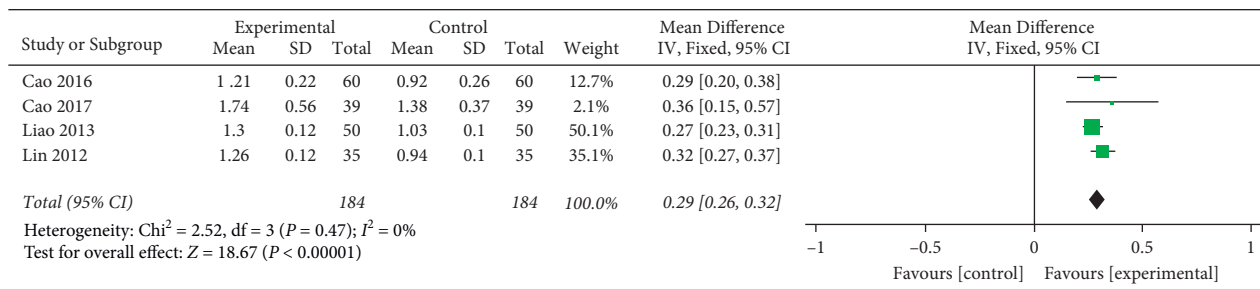


FIGURE 7: Forest plots of HDL-C levels.

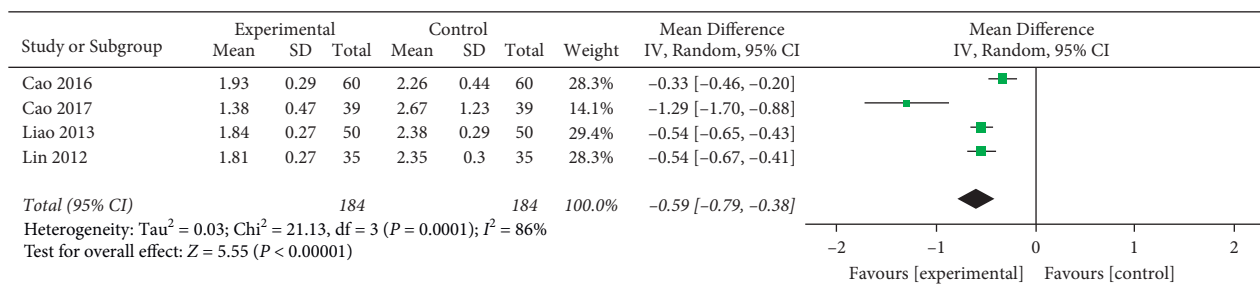


FIGURE 8: Forest plots of LDL-C levels.

coronary heart disease angina pectoris was analyzed by publication bias, and an inverted funnel chart was made. The analysis showed that the bilateral symmetry of the funnel chart was acceptable, indicating that the publication bias was unknown (Figure 9).

#### 4. Discussion

Inflammation is one of the main causes of coronary plaque. Myocardial infarction (heart attack) is a common

manifestation of CAD. CAD can lead to cardiovascular complications to a large extent. The role of oxidative stress or inflammation predisposes atherosclerotic plaques to rupture, leading to CV events (CAD), so inflammation is likely to be a driver of CAD and atherosclerotic plaque development [33, 34].

The types of coronary heart disease included in this meta-analysis include unstable angina, acute myocardial infarction, and coronary heart disease myocardial ischemia. The control group used conventional western medicine for



TABLE 2: Adverse reactions.

Included in the study	Sample size		Number of adverse reactions		Adverse reactions
	T	C	T	C	
Wang 2012 [17]	32	32	3	0	Mild bloating
Zhang Jilei 2010 [23]	46	46	0	3	1 case had head bloating, 2 cases felt discomfort in the gastric cavity
You 2002 [27]	36	30	1	0	Mild phlebitis, disappears by itself soon after needle removal
Zhang 2002 [28]	32	24	—	—	1 patient had dizziness and skin rash, symptomatic treatment did not affect the curative effect
Zhao 2019 [12]	42	40	8	14	In the observation group, there were 2 cases of facial flushing, 2 cases of nausea and vomiting, 1 case of headache, 1 case of arrhythmia, 1 case of recurrent myocardial infarction, 1 case of post-infarction angina pectoris; control group had 3 cases of nausea and vomiting, 1 case of diarrhea, and 3 cases of heart rhythm disorders, 3 cases of recurrent myocardial infarction, 2 cases of post-infarction angina, and 2 cases died
Total	188	172	12	17	

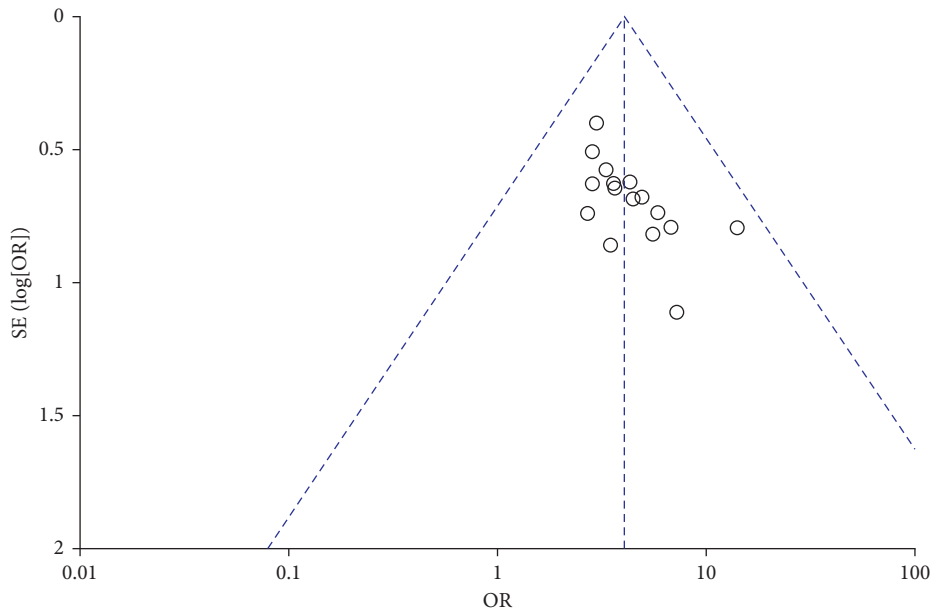


FIGURE 9: Funnel plots of clinical efficacy.

TABLE 3: Kappa statistics.

List	Consistency
Included studies (year of first author’s name)	√
Sample size (T/C)	√
Gender (male/female) (T/C)	√
Average age (years) (T/C)	√
Interventions (T/C)	√
Course of treatment (T/C)	√
Outcome indicators(T/C)	√

the clinical treatment of coronary heart disease angina pectoris, such as statins, aspirin, enteric-coated tablets, nitrates, etc. The frequency of administration was mostly once a day, up to three times a day. The treatment group was honghua injection plus the control group. Outcome

indicators include not only short-term key efficacy indicators but also physical and chemical indicators.

The results of this meta-analysis showed that the efficacy of honghua injection combined with western medicine in the treatment of coronary heart disease angina pectoris is better than that of western medicine alone, which is manifested in significantly improving clinical efficacy, electrocardiogram, and blood lipid indicators. At present, the clinical treatment of coronary heart disease angina pectoris also pays more attention to the combination of Chinese and western medicine, which has the advantages of small toxic side effects and obvious therapeutic effects.

4.1. Limitation. (1) According to the scores of the Cochrane Risk Evaluation Form, the quality of the studies included in

TABLE 4: Grade score.

Outcome indicators	Risk of bias	Inconsistency	Indirect	Imprecision	Publication bias	Evidence level
Clinical efficacy	Severe	Not severe	Not severe	Not severe	Possible	Low
EKG efficacy	Severe	Not severe	Not severe	Not severe	Possible	Low
TC	Severe	Not severe	Not severe	Not severe	Possible	Low
TG	Severe	Not severe	Not severe	Not severe	Possible	Low
HDL-C	Severe	Not severe	Not severe	Not severe	Possible	Low
LDL-C	Severe	Not severe	Not severe	Not severe	Possible	Low
Adverse reactions	Severe	Not severe	Not severe	Not severe	Possible	Low

this study is not high. Most of the random methods only describe “random” without specifying the specific random allocation method; and all studies did not mention whether blinding and allocation concealment were used. (2) Since only a few of the included literature mentioned adverse reactions, the safety evaluation of honghua injection needs to be studied. (3) The number of studies on a single outcome indicator is too small (for example, only 4 studies are included), and there is no subgroup analysis for indicators with heterogeneity to explore the source of heterogeneity. (4) The studies involved in this study have not been followed up for long-term.

Future trial design needs to increase the sample size, design strict randomized controlled trials, adopt appropriate randomization methods, and increase the use of blinding and allocation concealment methods in trials; improve the strength of research evidence, objectively report negative results, and ensure the statistics. The authenticity of the data provides a large amount of reliable data support for the treatment of coronary heart disease angina pectoris to better guide clinical practice (Tables 3 and 4).

## Abbreviations

TC:	Total cholesterol
TG:	Triacylglycerol
HDL-C:	High-density lipoprotein-cholesterol
LDL-C:	Low-density lipoprotein-cholesterol
MD:	Mean difference
OR:	Odds ratio
RCT:	Randomized controlled trial.

## Appendix

### Kappa statistics

### GRADE

The GRADE grading grades the quality of evidence for outcome indicators through five downgrading factors: study limitation, inconsistency, immediacy, imprecision, and publication bias. The quality of evidence for trials (RCTs) was rated as high by default, down 1 to intermediate, down 2 to low, and down 3 to very low.

### Search Strategies

(((((CAD[Title/Abstract]) OR (CHD[Title/Abstract])) OR (angina pectoris[Title/Abstract])) OR (coronary syndrome

[Title/Abstract])) OR (“Coronary Artery Disease”[Mesh])) AND (((Honghua injection[Title/Abstract]) OR (Hong-hua injection[Title/Abstract])) OR (Safflower injection[Title/Abstract])) AND (((randomized controlled[Title/Abstract]) OR (random[Title/Abstract])) OR (RCT[Title/Abstract])).

### Data Availability

All the data generated or analyzed during this study are included in this published article.

### Conflicts of Interest

The authors declare that they have no conflicts of interest.

### Authors’ Contributions

Wenke Zheng advanced the subject, Jiani Zhai, Wenke Zheng, and Lujia Cao designed the research and provided general guidance for the drafting of the plan. Zhaochen Ji, Xinyao Jin and Xuechen Du devised a search strategy. Jiani Zhai and Zhaochen Ji drafted the manuscript. Wenke Zheng and Lujia Cao reviewed and revised the manuscript. All authors have read and approved the final version of the manuscript.

### Acknowledgments

The authors thank Research project of key areas of traditional Chinese medicine by Tianjin Municipal Health Commission, research on safety evaluation methods of traditional Chinese medicine injections based on life cycle management (2021001).

### References

- [1] World Health Organization Released, “2014 World health statistics,” *Chinese General Practice*, vol. 17, no. 28, p. 3401, 2014.
- [2] S. Hu, R. Gao, L. Liu et al., “Summary of “Chinese cardiovascular disease report 2018”,” *Chinese Journal of Circulation*, vol. 34, no. 03, pp. 209–220, 2019.
- [3] S. Liu, R. Ding, and D. Hu, “Chinese expert consensus on rehabilitation and secondary prevention of coronary heart disease,” *Chinese Journal of Cardiovascular Diseases*, vol. 41, no. 4, pp. 267–275, 2013.
- [4] H. Abid, Z. Abid, and S. Abid, “Atherogenic indices in clinical practice and biomedical research: a short review: atherogenic indices and cardiovascular diseases,” *Baghdad Journal of*

- Biochemistry and Applied Biological Sciences*, vol. 2, no. 02, pp. 59–69, 2021.
- [5] Y. Huang, L. Huang, Y. Tao et al., “Meta analysis of the effect of Yixinshu preparations combined with conventional treatment regimens in the treatment of coronary heart disease and angina,” *China Pharmacy*, vol. 32, no. 03, pp. 339–345, 2021.
  - [6] W. Jingjing, M. Zhu, R. Yu, H. Xuanxuan, L. Qiao, and T. Ma, “Research progress on the treatment of coronary heart disease with traditional Chinese medicine,” *Journal of Traditional Chinese Medicine Research*, vol. 33, no. 10, pp. 74–77, 2020.
  - [7] S. Li, C. Zhu, and G. Liu, “Pathogenesis and drug treatment progress of unstable angina pectoris,” *World Journal of Integrated Traditional Chinese and Western Medicine*, vol. 8, no. 02, pp. 210–212, 2013.
  - [8] H. Tian and J. He, “Clinical application of honghua injection,” *Journal of Traditional Chinese Medicine*, vol. 6, pp. 41–43, 2004.
  - [9] Z. Chai and X. Chen, “The effect of honghua injection on blood viscosity, platelet and anticoagulation and fibrinolytic function in patients with cor pulmonale,” *Journal of Pharmaceutical Practice*, vol. 5, pp. 260–263, 2003.
  - [10] X. Hu, S. Yin, T. Yuan, Y. Wang, Z. Huang, and Y. Lu, “Research progress on the chemical constituents and pharmacological activities of honghua,” *Journal of Pharmaceutical Practice*, vol. 31, no. 03, pp. 161–168+197, 2013.
  - [11] R. Xu and S. Tong, “Research progress on the chemical constituents and pharmacological effects of honghua,” *China Pharmaceuticals*, vol. 19, no. 20, pp. 86–87, 2010.
  - [12] T. Zhao, S. Li, and C. Xie, “The clinical efficacy of honghua injection combined with simvastatin in patients with acute myocardial infarction,” *Chinese Patent Medicine*, vol. 41, no. 03, pp. 563–566, 2019.
  - [13] X. Zhang, “The effect of isosorbide mononitrate combined with honghua injection on the efficacy and hemodynamics of unstable angina pectoris,” *Journal of Shanxi Medical College for Staff and Workers*, vol. 28, no. 03, pp. 68–69, 2018.
  - [14] Ya. Tu and Y. Zhou, “Observation on the effect of honghua injection in the treatment of patients with coronary heart disease,” *Journal of Clinical Rational Use*, vol. 7, no. 34, pp. 58–59, 2014.
  - [15] J. Wang and H. Wei, “Clinical observation on the treatment of unstable angina pectoris with integrated traditional Chinese and western medicine,” *Journal of Practical Traditional Chinese Medicine*, vol. 30, no. 08, p. 733, 2014.
  - [16] C. Liao, “Analysis of the effect of honghua injection on elderly patients with coronary heart disease,” *Journal of Chinese Medicine*, vol. 28, no. B08, pp. 34–35, 2013.
  - [17] Y. Wang and L. Jin, “Observation on the effect of honghua injection in adjuvant treatment of coronary heart disease and angina pectoris,” *People’s Military Surgeon*, vol. 55, no. 10, pp. 972–973, 2012.
  - [18] Z. Li and R. Li, “The effect of honghua injection in the auxiliary treatment of 50 cases of coronary heart disease,” *Journal of Hebei North University (Natural Science Edition)*, vol. 28, no. 02, p. 87+89, 2012.
  - [19] Z. Li and R. Li, “Observation on the efficacy of honghua injection combined with aspirin in the treatment of coronary heart disease myocardial ischemia,” *Lizheng Medicine and Materia Medica*, vol. 23, no. 06, p. 1581, 2012.
  - [20] X. Lu, “The efficacy of Honghua injection in the treatment of coronary heart disease and angina pectoris,” *Chinese Journal of Massage and Rehabilitation Medicine*, vol. 3, no. 24, pp. 71–72, 2012.
  - [21] X. Su and J. Chai, “Observation on the clinical efficacy of Honghua injection in the treatment of coronary heart disease,” *China Contemporary Medicine*, vol. 18, no. 26, pp. 115–117, 2011.
  - [22] J. Zhang and Y. Guo, “Honghua injection in the treatment of 46 cases of coronary heart disease and angina pectoris,” *Guangming Traditional Chinese Medicine*, vol. 25, no. 05, pp. 801–802, 2010.
  - [23] S. Fan, “Clinical observation of Honghua injection in the treatment of coronary heart disease and angina pectoris,” *Journal of Medical Forum*, vol. 31, no. 08, pp. 62–63, 2010.
  - [24] J. Zhang, “Clinical observation on 41 cases of unstable angina pectoris treated with honghua,” *Chinese Medical Innovation*, vol. 7, no. 01, pp. 76–77, 2010.
  - [25] Y. Cheng, “Observation of curative effect of Honghua on coronary heart disease,” *Chinese Journal of Practical Internal Medicine*, vol. 29, no. S1, pp. 147–148, 2009.
  - [26] R. Du, “Evaluation of the efficacy of honghua injection in the treatment of unstable angina pectoris,” *Chinese Journal of Clinical Hepatology*, vol. 1, pp. 66–67, 2009.
  - [27] L. Zhang and M. Yu, “Clinical observation of Honghua injection in the treatment of coronary heart disease myocardial ischemia,” *Journal of Cardiovascular Rehabilitation Medicine*, vol. 5, pp. 455–456, 2002.
  - [28] Q. You and P. Yan, “Clinical observation on 36 cases of coronary heart disease and angina treated by honghua injection,” *Modern Journal of Integrated Traditional Chinese and Western Medicine*, vol. 7, pp. 581–582, 2002.
  - [29] Ai. Lijiang and Ai. Haiti, “Observation on the efficacy of honghua injection in the treatment of 48 cases of coronary heart disease,” *Chinese Community Physician (Medical Profession)*, vol. 13, no. 24, p. 172, 2011.
  - [30] S. Cao, “The effect of honghua injection combined with atorvastatin on heart function and blood lipid levels in patients with unstable angina pectoris of coronary heart disease,” *Henan Medical Research*, vol. 26, no. 22, pp. 4128–4129, 2017.
  - [31] J. Cao, X. Li, S. Shang, and Q. Zheng, “Effects of honghua injection on lipid metabolism and oxidative stress in patients with coronary heart disease,” *Herald of Chinese Medicine*, vol. 22, no. 23, pp. 112–114, 2016.
  - [32] T. Lin, “The effect of Honghua injection on coronary blood flow, antioxidant capacity and lipid metabolism in patients with coronary heart disease,” *Chongqing Medical Journal*, vol. 41, no. 31, pp. 3267–3269, 2012.
  - [33] V. Patil, A. Avhad, A. Kulkarni, and K. Pandere, “High-sensitive C-reactive protein in patients with coronary artery disease,” *Journal of Natural Science, Biology and Medicine*, vol. 11, no. 1, p. 39, 2020.
  - [34] A. S. Kumar, “Potential biomarkers to detect inflammation leading to coronary artery disease,” *Journal of Natural Science, Biology and Medicine*, vol. 11, no. 1, p. 1, 2020.