

CORRECTION

# Correction: Incompatible amount of 3-D and 2-D periodontal attachments on micro-CT scanned premolars

Hsiang-Hsi Hong, Adrienne Hong, Yi-Fang Huang, Heng-Liang Liu

The incorrect image appears as [Fig 1](#). Please see the correct [Fig 1](#) here.



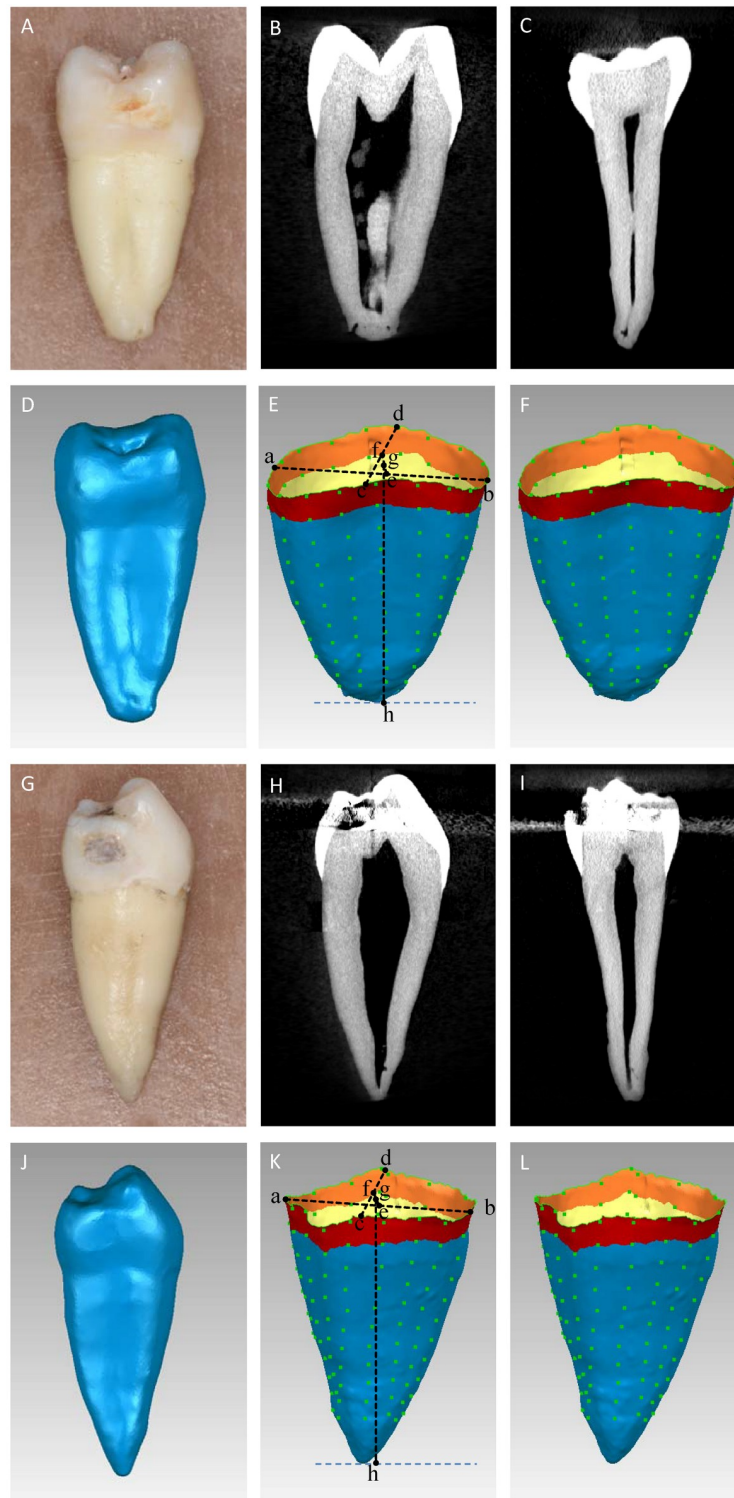
---

 OPEN ACCESS

**Citation:** Hong H-H, Hong A, Huang Y-F, Liu H-L (2018) Correction: Incompatible amount of 3-D and 2-D periodontal attachments on micro-CT scanned premolars. PLoS ONE 13(12): e0209206. <https://doi.org/10.1371/journal.pone.0209206>

**Published:** December 10, 2018

**Copyright:** © 2018 Hong et al. This is an open access article distributed under the terms of the [Creative Commons Attribution License](#), which permits unrestricted use, distribution, and reproduction in any medium, provided the original author and source are credited.



**Fig 1. Photograph, micro-CT and STL images of scanned maxillary and mandibular premolars.** (A–F): The views and estimated levels of a micro-CT scanned maxillary premolar. (A): maxillary premolar; (B): a sagittal view; (C): a frontal view; (D): a STL format model was developed.; (E): a–b: line connecting the buccal and lingual CEJ, c–d: line connecting the CEJ from mesial and distal CEJ, e: midpoint of a–b, f: midpoint of c–d, g: midpoint of e–f and represented the CEJ from 2-D viewpoint, and g–h: represented the 2-D root length; (F): The root surface areas were calculated from 1<sup>st</sup> mm to 10<sup>th</sup> mm. (G–L): The views and evaluated levels of a micro-CT scanned mandibular premolar. (G):

mandibular premolar; (H): a sagittal view; (I): a frontal view; (J): a STL format model was developed; (K): a–b: line connecting the buccal and lingual CEJ, c–d: line connecting the mesial and distal CEJ, e: midpoint of a–b, f: midpoint of c–d, g: midpoint of e–f and represented the CEJ from 2–D viewpoint, and g–h: represented the 2–D root length; (L): The root surface areas were calculated from 1<sup>st</sup> mm to 10<sup>th</sup> mm corono-apically.

<https://doi.org/10.1371/journal.pone.0209206.g001>

## Reference

1. Hong H-H, Hong A, Huang Y-F, Liu H-L (2018) Incompatible amount of 3-D and 2-D periodontal attachments on micro-CT scanned premolars. *PLoS ONE* 13(3): e0193894. <https://doi.org/10.1371/journal.pone.0193894> PMID: 29518113