

REVIEW

Open Access

# The role of female hormones on lung function in chronic lung diseases

Anthony Tam<sup>1</sup>, Don Morrish<sup>2</sup>, Samuel Wadsworth<sup>1</sup>, Delbert Dorscheid<sup>1</sup>, SF Paul Man<sup>1</sup> and Don D Sin<sup>1\*</sup>

## Abstract

**Background:** The prevalence, morbidity, and mortality of inflammatory lung diseases such as asthma, chronic obstructive pulmonary disease (COPD) and cystic fibrosis (CF) are increasing in women. There is a dearth of data on the biological mechanisms to explain such observations. However, some large epidemiologic studies suggest that lung function fluctuates during the menstrual cycle in female patients with airways disease but not in women without disease, suggesting that circulating estradiol and progesterone may be involved in this process.

**Discussion:** In asthma, estradiol shuttles adaptive immunity towards the T<sub>H</sub>2 phenotype while in smokers estrogens may be involved in the generation of toxic intermediate metabolites in the airways of female smokers, which may be relevant in COPD pathogenesis. In CF, estradiol has been demonstrated to up-regulate MUC5B gene in human airway epithelial cells and inhibit chloride secretion in the airways. Progesterone may augment airway inflammation.

**Summary:** Taken together, clinical and in-vivo data have demonstrated a sex-related difference in that females may be more susceptible to the pathogenesis of lung diseases. In this paper, we review the effect of female sex hormones in the context of these inflammatory airway diseases.

**Keywords:** lung function, menstrual cycle, sex hormones, asthma, cystic fibrosis, COPD

## Background

### The sex differences in the epidemiology of asthma, COPD and CF

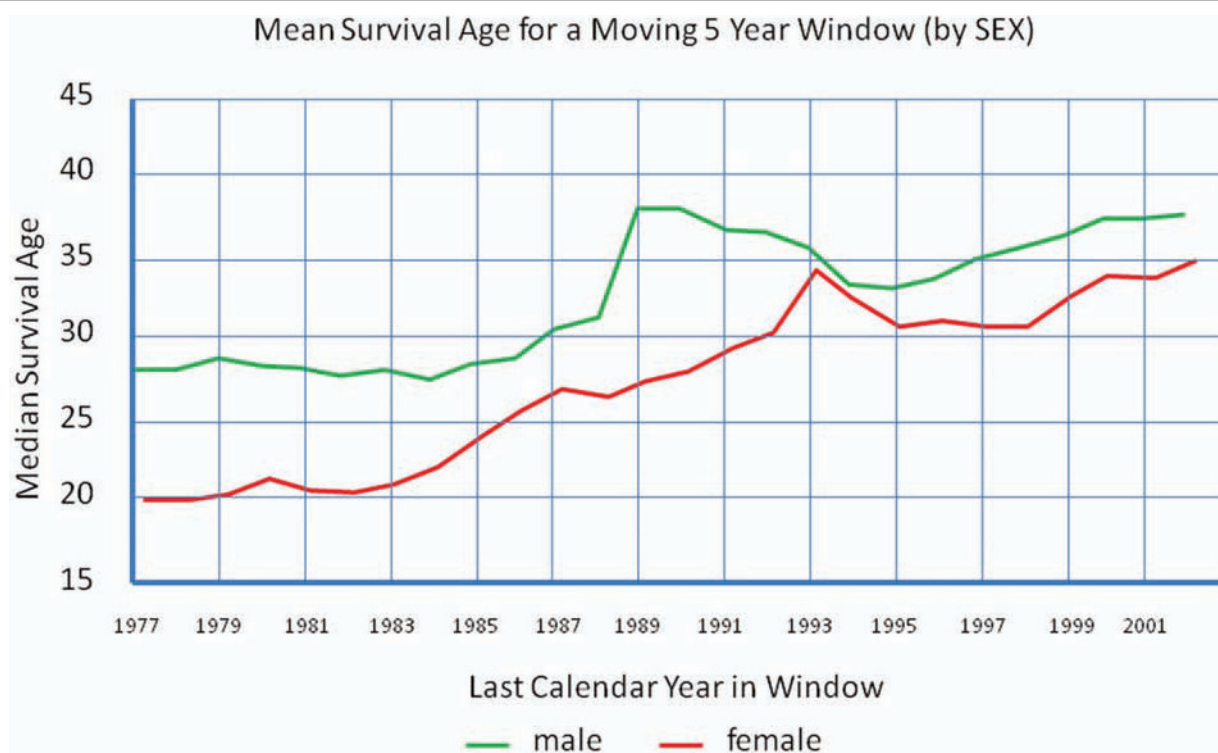
There is an epidemic of inflammatory lung diseases such as asthma, chronic obstructive pulmonary disease (COPD) and cystic fibrosis (CF). Although these conditions have distinct pathophysiologies, women for largely unknown reasons are increasingly becoming more prevalent and experiencing excess morbidity and mortality from these disorders. For instance, in the United States (U.S.) and elsewhere, more than 60% of all adult patients with asthma are women, and female compared to male asthmatics are 50% more likely to have physician visits, 35% more likely to experience hospitalizations and 40% more likely to die from asthma [1]. Although men have higher prevalence of COPD than women, the increased rates of cigarette smoking in females within the last

several decades have been associated with steadily increasing rates of COPD in females [2]. In 2000, for the first time, the number of women dying of COPD in the United States surpassed the number of men [3]. Even in cases in which cigarette smoking is implicated, women develop COPD after smoking fewer number of cigarettes per lifetime (i.e. less pack-years of smoking) [4] and are two to three times more likely to experience hospitalization than are male patients [5]. Among first-degree relatives of patients with severe COPD, female smoking relatives demonstrate significantly lower lung function compared to male smoking relatives [6]. In patients with severe COPD with oxygen dependence, women have a 50% increase in the risk of mortality compared to men [7]. Finally, although CF is a rare genetic disorder that affects both men and women, for largely unclear reasons, female patients have shorter life expectancy compared to male patients (Figure 1). Collectively, these epidemiologic data suggest that female gender is a significant risk factor for morbidity and mortality in inflammatory lung diseases and raise the possibility that sex-related hormones may be important in

\* Correspondence: don.sin@hli.ubc.ca

<sup>1</sup>The UBC James Hogg Research Centre, Providence Heart + Lung Centre & Department of Medicine, University of British Columbia (UBC), Vancouver, BC, Canada

Full list of author information is available at the end of the article



**Figure 1** Median survival ages in both sexes in CF from 1977-2002. Obtained from the Canadian Cystic Fibrosis Foundation, Report of the Canadian Patient Data Registry 2002, Toronto, Ontario [8].

mediating disease progression in asthma, COPD and CF, though the mechanisms by which this occurs may differ between these disorders. In this paper, we will examine the potential role of estrogen and progesterone in the pathogenesis of these disorders.

### Biology of sex hormones

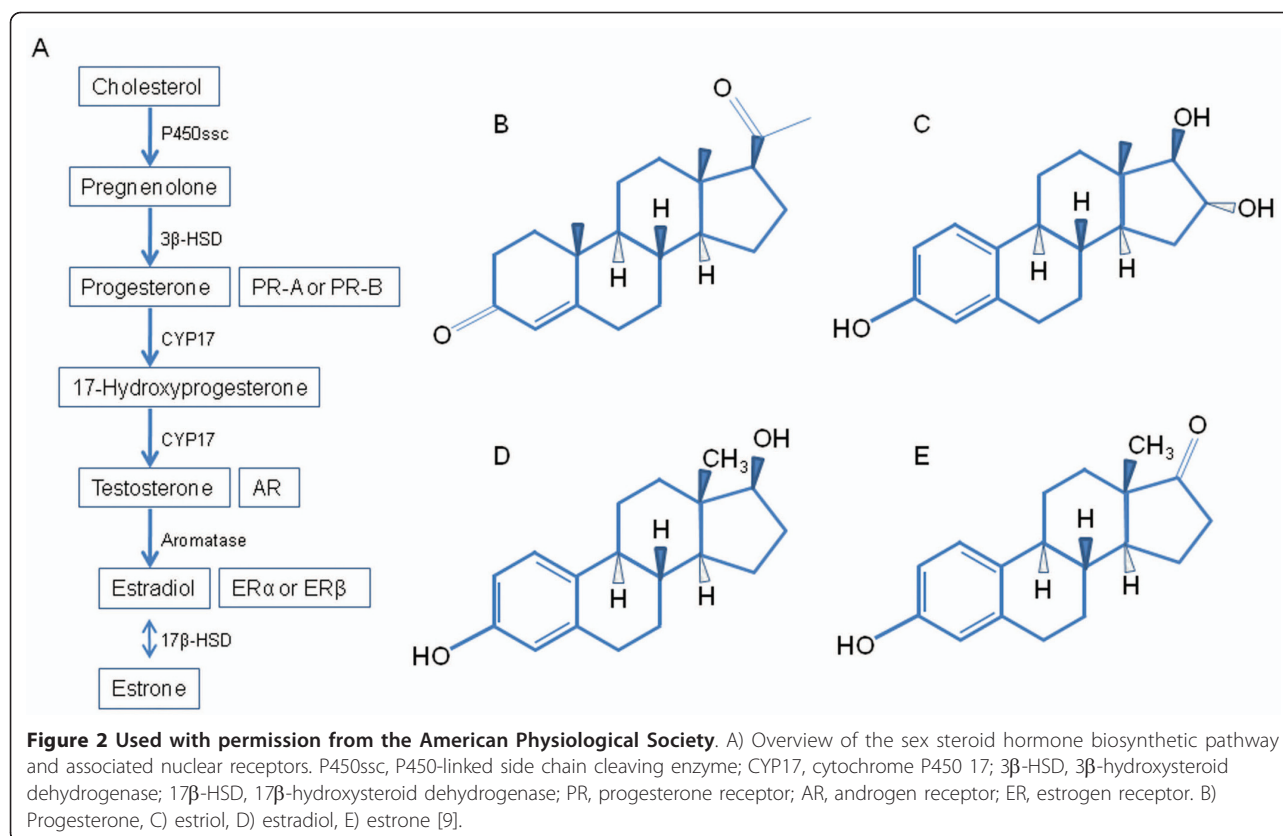
#### *Estrogen and progesterone*

Steroid hormones are primarily synthesized in the gonads, adrenal glands, and the feto-placental unit [9]. Cholesterol is the common precursor of all steroid hormones where it is first converted to pregnenolone by P450-linked side chain cleaving enzyme (P450<sub>ssc</sub>) (Figure 2A). Pregnenolone is then converted to progesterone, which is used to synthesize androgens and estrogens [10]. Estrogens are derived from androgens by the addition of an aromatic A ring, through a reaction that is catalyzed by the enzyme aromatase [10,11]. Estrogen and progesterone are multi-ringed structures with distinct functional groups (Figure 2B, C, D, E). Unlike progesterone, there are three major naturally occurring estrogens in women: 1) estriol, 2) estradiol, and 3) estrone. In humans, estriol is the predominant estrogen in pregnant women, while estradiol is the predominant form in the non-pregnant premenopausal women and estrone is the predominant estrogen in the menopausal

females. Sex steroid hormones act via their own unique receptors: estrogen receptor (ER- $\alpha$  or ER- $\beta$ ), progesterone receptor (PR-A or PR-B), and an androgen receptor (AR) [12]. Estradiol binds with a higher affinity to ER than its metabolic products such as estrone and estriol [13]. All sex steroid hormone receptors have been shown to be expressed in lung tissue [14,15].

#### *Sex hormones and menstrual cycle*

Four main hormones characterize the menstrual cycle: estradiol (E2), progesterone (P), luteinizing hormone, and follicle stimulating hormone. On average, the menstrual cycle is 28 days and is divided in two phases: the follicular (Day 1-13) and the luteal phase (Day 14-28). The onset of ovulation is defined by a surge in estradiol on day 14. Menstruation and the late luteal phase are characterized by low serum levels of estradiol (~0.15 nM) and progesterone (~9.54-31.81 nM); whereas ovulation is marked by high circulating levels of estradiol (~0.37-1.47 nM) and low levels of progesterone (~0.95-9.54 nM) (Table 1). During the luteal phase, estradiol levels range from 0.15-0.92 nM, whereas progesterone levels increase from 9.54-31.81 nM and drop back to lower levels prior to menstruation. However during menopause, estradiol and progesterone levels in both genders significantly reduced to levels below those in the menstruation phase.



### Delivery of sex hormones to estrogen receptors in the lungs via SHBG

Sex hormone binding globulin (SHBG) is an important steroid hormone binding protein in human plasma and regulates sex hormone delivery to tissues and cells [17]. Plasma SHBG is produced primarily in hepatocytes, which is a glycosylated isoform of SHBG [18] and is produced by the Sertoli cells [19]. In biological fluids, SHBG exists as a homodimer with a separate steroid-binding pocket and a calcium-binding site in each monomer [20] and binds to both androgens and estradiol with nanomolar affinities [21]. In normal men and women, between 40-65% of circulating testosterone (T) is bound to SHBG [22]. SHBG regulates tissue delivery of sex hormones by binding them and retaining them in the circulatory pool, where they are relatively inert. However, once the sex hormones dissociate from SHBG, they can escape the blood stream, and bind with the intracellular androgen or estrogen receptors, causing

changes in gene expression of cells [17]. It is thus generally accepted that only the non-bound hormone is biologically active [23]. SHBG is considered as an estrogen amplifier because T preferentially binds with SHBG, causing more E2 to remain unbound [17].

### Sex hormone receptors: lung physiology

For many years, we have known that estrogen and progesterone receptors are responsible for sexual development [24] but their effect beyond the reproductive system is becoming increasingly recognized. There are two types of estrogen receptors (ER), two types of progesterone receptors (PR): ER-α, ER-β, PR-A and PR-B, all of which are expressed in rats [25], mouse [26], and humans [27]. While androgen receptor (AR) is expressed primarily in mammalian reproductive tissues [28], ER-α, ER-β, PR-A and PR-B expression have been noted in not only in the mammalian female and male reproductive tracts, but also in the female mammary glands, bone, cardiovascular tissues, lung, and the brain [14,24]. In the lungs, the expression of ER-β protein is twice as that of ER-α [29]. Most of

**Table 1** Female hormone levels throughout the menstrual cycle [16]

| Phases                | 17β-estradiol (nM)         | Progesterone (nM)               |
|-----------------------|----------------------------|---------------------------------|
| Day 1-13 (follicular) | ~0.15-0.37 (40-100 pg/ml)  | ~0.95 (300 pg/ml)               |
| Day 14 (Ovulation)    | ~0.37-1.47 (100-400 pg/ml) | ~0.95-9.54 (300-3000 pg/ml)     |
| Day 15-28 (luteal)    | ~0.15-0.92 (40-250 pg/ml)  | ~9.54-31.81 (3000-10,000 pg/ml) |

the expression is found in the cytoplasm but minor expression has also been noted in the mitochondria and nucleus [29]. ER- $\alpha$  and ER- $\beta$  belong to a super-family of nuclear hormone receptors, many of which are ligand-activated transcription factors that regulate gene expression by binding to the promoter region of genes [24]. These receptors contain an N-terminal DNA binding domain and a C-terminal ligand binding domain (LBD) for estrogen [24]. Studies in mice in which ER- $\alpha$  and ER- $\beta$  were deleted revealed that both types of ER are required for the formation of complete alveolar units in females. ER- $\alpha$  ensures that the lungs differentiate properly during development, leading to normal numbers of alveoli per surface area. ER- $\beta$ , on the other hand, modulates development of extracellular matrix, leading to normal elastic tissue recoil pressure in the lungs [30,31]. Furthermore, ER- $\alpha$ , but not ER- $\beta$ , has been demonstrated to mediate an anti-inflammatory response when challenged by carrageenan (CAR) in mice [32]. Upon activation by E2, ER- $\alpha$  inhibited the intracellular trafficking of nuclear factor- $\kappa$ B, thereby preventing the expression of inflammatory genes [33].

#### **Mechanism of estrogen receptor activation in the lungs**

The exact mechanism by which E2 modulates cell signaling pathways is not completely known and there may be multiple cell signaling pathways by which sex hormones affect gene regulation and expression. According to the free hormone hypothesis, unbound sex steroids freely diffuse across cell surface membranes [23]. Binding of estrogen to the ligand binding domain of the ER causes a conformational change in the receptor, which results in dimerization of ER and translocation to the nucleus [24]. The activated receptor/DNA complex then binds to specific promoter sequences of DNA called hormone response elements (HREs) and recruits other cofactors from the nucleus, which results in transcription of DNA downstream from the HRE [24]. An alternate hypothesis suggests that even E2 bound to SHBG are metabolically active. It is now well recognized that sex steroids target tissues containing membrane-binding sites that can bind with SHBG [34]. In prostate [35] and breast cancer cells, it has been shown that by binding to this site, SHBG triggers cAMP-dependent signaling causing upregulation of adenylyl cyclase and other downstream signaling molecules. It is important to note that these data were generated *in vitro* using isolated epithelial cells and not in the context of these cells *in vivo*. Thus, the exact cell signaling pathway of sex hormones remains unknown.

## **Discussion**

### **How sex hormones may modulate COPD**

#### **Sex hormone on cigarette smoke metabolism**

A variety of animal models have been used to examine potential sex-related differences in the risk of inflammatory lung diseases. For example, chronic exposure of mice

to cigarette smoke has led to the development of emphysematous-like changes in alveolar structure, and these changes develop more rapidly in females than in males [9]. It is important to note that cigarette smoke is made up of more than 4,000 different chemicals. After inhalation, these chemicals are metabolized in two different phases: Phase I and Phase II. Phase I is mediated largely by cytochrome P450 (CYP) enzymes, which are a family of xenobiotic enzymes that are responsible for de-toxifying cigarette smoke and other environmental irritants into intermediate metabolites. These metabolites in turn are conjugated by Phase II enzymes and excreted. The rate-limiting step in most cases is Phase II. Thus, if there is under-expression of Phase II enzymes or complete saturation of their binding sites, CYP-based metabolites accumulate in the lung. Because some intermediate metabolites are as toxic and others are even more toxic than their parent constituents, lungs may suffer oxidant damage through a process called bioactivation unless there is excellent coordination of Phase I and Phase II enzymes. Estradiol up-regulates CYP enzymes without necessarily altering the expression of Phase II enzymes, making the female lungs more susceptible to oxidant damage in response to cigarette smoke. This concept is supported by animal experiments. For instance, Van Winkle et al. showed that the lungs of female mice were more susceptible to naphthalene, a prominent component of side stream cigarette smoke, compared to male mice [36]. Female lungs of rats had higher expression of CYP enzymes and demonstrated increased accumulation of potent oxidants from naphthalene metabolites [37]. Interestingly, in humans, the two CYP enzymes that are up-regulated by cigarette smoke are CYP1A1 and CYP1B1, which are regulated by ER- $\alpha$  [38]. Stimulation of estrogen receptors in the lungs increases protein expression of CYP1A1 by twofold [39]. CYP1A1 has been demonstrated to have high activity for 17 $\beta$ -estradiol 2-hydroxylation, followed by 15 $\alpha$ -, 6 $\alpha$ -, 4-, and 7 $\alpha$ -hydroxylation [40]. 2-hydroxylated estrogens are suggested to be anti-carcinogens, whereas 4- and 16 $\alpha$ -hydroxylated estrogens may enhance cancer development [41-43]. Interestingly, 2-hydroxyestrogen but not 16 $\alpha$ -hydroxyestrogen has increased clearance rate from the circulation of premenopausal females smokers [44,45], suggesting a differential effect of estrogen metabolism. The increased CYP expression is related to increased levels of estradiol [46] and increased metabolism of cigarette smoke to generate oxidants/oxidizers [47], suggesting that female sex hormone contributes to oxidative stress and greater airway injury.

### **How sex hormones may modulate asthma**

#### **Animal Models for Asthma**

When challenged with allergen, female compared to male mice mount an enhanced allergic response,



characterized by increased serum levels of ovalbumin-specific IgG1 and IgE [48] and increased airway inflammation [49]. Ovariectomized rats, on the other hand, are protected from increased airway inflammation related to allergens [50]. Estrogen replacement in these ovariectomized rats reestablishes airway inflammation to levels found in intact females [50]. Collectively, these data suggest that female hormones augment airway inflammation in the presence of allergens. One potential mechanism for this response is estrogen-mediated deviation in helper T cells towards a  $T_H2$  phenotype. Another mechanism is that female hormones down-regulate the expression of regulatory T ( $T_{reg}$ ) cells [51], which play an important role in regulating  $T_H2$  responses [52]. Estradiol may also up-regulate early phase pro-inflammatory cytokines such as IL-1 $\beta$  and TNF- $\alpha$  and down-regulate anti-inflammatory cytokines such as IL-10 [53]. Consistent with this notion, Huber and Pfaeffle showed that male mice transfected with Cocksackievirus B3 predominantly mounted a  $T_H1$  cell phenotypic response, while female mice mounted a vigorous  $T_H2$  cell phenotypic response [54]. Interestingly, when male mice were given estradiol, the ratio of IL-2/IFN- $\gamma$  to IL-4-producing cells became nearly equal, suggesting that estrogen promotes a  $T_H2$  response [54]. Progesterone, on the other hand, significantly increases the expression of IL-10, IL1- $\beta$ , and TNF- $\alpha$  in the lungs, and augments the release of IL-4 by bone marrow cells [53], which may lead to eosinophilia. The existence of such dual hormone effects suggests that the balance between estradiol and progesterone may be critical in host responses to environmental allergens [53]. It should be noted, however that the ovary generates a large number of cytokines and other factors that modulate the inflammatory process and affect the actions of estradiol and progesterone [55,56].

#### **Sex hormones and adaptive immunity**

Differences in male and female immune responses have been recognized for some time [54]. Females generally mount better humoral immunity than males, while males demonstrate enhanced cellular immune responses [57,58]. These differential immune responses may be important in autoimmune diseases. Helper T cells originate from hematopoietic stem cells in the bone marrow, mature in the thymus and act in many different tissues and organs. The two major subsets of helper T cells are  $T_H1$  and  $T_H2$  cells. Naïve T cells differentiate into  $T_H1$  cells in the presence of IFN- $\gamma$  and IL-12, which are secreted by dendritic cells in response to bacterial and viral challenge.  $T_H1$  cells produce a variety of different cytokines including IFN- $\gamma$  and IL-2 and regulate the cell-mediated immune response [59,60]. In response to extracellular parasites and allergens, dendritic cells produce IL-4, which promotes the  $T_H2$  lineage.  $T_H2$  cells,

dissimilar to  $T_H1$  cells, produce mostly IL-4, -5, -10 and -13 to promote IgG, IgA, and IgE antibody isotype responses [61].

Unlike the animal models, immunological modulation by sex hormones in human inflammatory diseases is more complex. However, there are data suggesting that certain inflammatory diseases can modulate the  $T_H1/T_H2$  response in humans. For example, patients with systemic lupus erythematosus (SLE) demonstrate a unique pattern of estrogen production and metabolism [62]. SLE is characterized by elevated aromatase enzyme activity and cytochrome p450 isoenzyme (CYP1B1), increased expression of the CD4<sup>+</sup>  $T_H2$  response and a relative under-expression of the CD4<sup>+</sup>  $T_H1$  response [62]. Estrogen is known to be an inducer of aromatase that converts androgen to estrogens. CYP1B1 then converts estrogen to 16 $\alpha$ -hydroxyestrone, which is the most biologically active serum estrogen with the most potent immunomodulatory effects [62]. Estrogen can also stimulate secretion of IL-4, -5, -6, and -10 by  $T_H2$  lymphocytes, while androgens promote the production of IL-2 by  $T_H1$  cells [62]. Taken together, the relative balance between estrogen and androgen in the circulation may influence the  $T_H1/T_H2$  lineage and modulate the overall inflammatory response.

#### **Clinical overview of asthma**

It is well known that before puberty the incidence of asthma is higher in boys than in girls, but following puberty, the pattern switches such that by adulthood, the prevalence of asthma is nearly 50% higher in women than in men [63]. It is also well known that asthma severity fluctuates over the course of the menstrual cycle [64]. The incidence of asthma tends to decrease after menopause [65] but hormone replacement therapy following menopause is associated with an increased risk of asthma in non-smokers but not with newly diagnosed COPD [66,67], suggesting that sex hormones may play a more important role in the development and progression of asthma.

#### **Sex hormones on lung function in asthma**

Both forced expiratory volume in one second (FEV<sub>1</sub>) and forced vital capacity (FVC) are the lowest following ovulation in the peri-ovulatory phase of the menstrual cycle. During this phase, circulating estradiol levels are relatively high and progesterone levels are moderate. FEV<sub>1</sub> and FVC are the greatest during the peri-menstrual period when estradiol and progesterone levels are at their lowest [68]. Consistent with the observation, Zimmerman and colleagues showed that the highest rates of emergency department visits for asthma occurred during the pre-ovulatory phase of the menstrual cycle [69]. Although the exact mechanism for these observations are unknown, as previously stated, both progesterone (at any concentration) and estrogen

at high physiological concentrations promote a T<sub>H</sub>2 phenotype, which is likely to be important in asthma pathogenesis.

#### **Sex hormones on exhaled nitric oxide in women**

An important biomarker of airway inflammation in asthma is nitric oxide (NO). NO is synthesized by activated alveolar macrophages (AM) through the actions of an inducible form of nitric oxide synthase (iNOS) [70]. AM effects bacterial and viral killing by releasing NO and other reactive oxygen and nitrogen species [71]. However, in asthma, this process is dysregulated such that even the absence of microbial products, NO pathways in the airways are enhanced.

Provocatively, in a small study of pre-menopausal women not using oral contraceptives, Mandhane et al. showed that exhaled NO concentrations were positively related to serum progesterone ( $p < 0.05$ ) but inversely related to serum 17 $\beta$ -estradiol levels [72]. Similarly, Farha et al showed that exhaled NO concentrations were highest in the luteal phase (when serum progesterone levels are expected to reach their peak). Suppression of the menstrual cycle with the use of oral contraceptives, on the other hand, abolished these relationships. Together, these data suggested that progesterone may be a very important regulator of airway inflammation in female asthmatics.

#### **How sex hormones may modulate Cystic Fibrosis**

##### **Sex hormone on mucus production**

Accumulation of thick, tenacious mucus is a hallmark of cystic fibrosis (CF) and has a central role in CF pathophysiology [73]. Mucus clearance plays an important role in innate immunity in the mammalian lung [74]. Excess sputum production in the lung is one of the key factors in overwhelming ciliary clearance and obstructing the airways, thereby contributing to morbidity and mortality in CF and other inflammatory lung diseases [75]. Mucins are upregulated by pathogens, inflammatory mediators, and toxins, which when dysregulated can exacerbate chronic airway diseases [76,77]. Expression of mucin genes is increased by inflammatory mediators, such as lipopolysaccharide (LPS) [78], TNF- $\alpha$  [79], IL-1 [79], IL-17 [80] and  $\beta$  neutrophil elastase [81]. In addition to these inflammatory mediators, it is known that sex hormones such as estrogen can also up-regulate MUC5B gene expression in normal human airway epithelial cells [82]. MUC5B is one of the major mucins in the human airway submucosal glands [83]. Estrogen is not the only regulator of MUC5B but also regulates a wide diversity of genes involved in extracellular matrix, general cell growth, and differentiation processes [24]. Taken together, estradiol may have the potential to augment mucin production resulting in reduced clearance in CF.

##### **Sex hormone on Ca<sup>+2</sup>-activated Cl<sup>-</sup> secretion**

An in-vitro study [84] has shown that high circulating levels of estradiol reduces Ca<sup>+2</sup>-activated Cl<sup>-</sup> secretion by airway epithelial cells in culture, thereby disrupting ion and water balance and leading to thick, tenacious mucus. Clinical studies have confirmed that Ca<sup>+2</sup>-activated Cl<sup>-</sup> secretion is decreased in women with CF at times when 17 $\beta$ -estradiol levels are high [69]. Estradiol mediates this effect by inhibiting Ca<sup>+2</sup> influx and signaling in both non-CF and CF airway epithelia [74]. Moreover, estrogen also appears to inhibit the uridine triphosphate-mediated Cl<sup>-</sup> secretion in both women with CF and normal, healthy women [74]. Experiments revealed that a four-fold increase in estradiol was accompanied by a 50% inhibition of UTP-stimulated Cl<sup>-</sup> secretion in vivo [74]. Since the CF lung disease is characterized by poor Cl<sup>-</sup> secretion and water retention in the airways [74], it is likely that the estrogen-related disturbance in Cl<sup>-</sup> secretion via the Ca<sup>+2</sup>-activated channels and other pathways can cause marked perturbations in mucociliary clearance, and accumulation of thick mucus in the airway, resulting in disease progression [85].

##### **Sex hormones on lung function in CF**

As with asthma, menstrual cycles may also affect lung function in female patients with CF but not in the same phasic manner [86]. Unlike in asthmatics who demonstrate best lung function in the peri-menstrual period, female CF patients have the highest lung function during the luteal phase and the lowest lung function during the pre-ovulatory phase [87]. Johannesson showed that FEV<sub>1</sub> was 66% of predicted in female CF patients during the luteal phase, while it was only 63% during ovulation ( $P < 0.01$ ) [86], which interestingly is associated with increasing levels of estradiol. The differences in the swings in lung function during the menstrual period between asthmatics and CF patients may relate to the relative importance of mucus production in their pathophysiology. Although mucus production and clearance are thought to be important both diseases, in CF, it has a pre-eminent role, while in asthma, it is believed to have a more complementary role in disease progression. By up-regulating MUC5B expression, high estradiol levels during the pre-ovulatory phase may significantly enhance mucus production (through the mechanisms discussed in the previous section) and lead to worsening of airflow limitation in CF. Furthermore, 17 $\beta$ -estradiol in high physiological concentrations inhibits local production of IL-8 by up-regulating secretory leucoprotease inhibitors [88], which may diminish the ability of the female respiratory tract to contain bacterial infections in CF.

## Summary

Women are relatively more prevalent in the epidemiology of asthma, CF and COPD and appear in general to have worse prognosis than their male counterparts. The exact mechanism of this process is still uncertain. Emerging data suggest that female sex hormones play a role in these inflammatory airway conditions, through different but related mechanisms. Studies have shown that estrogen promotes a  $T_H2$  response, while androgen promotes a  $T_H1$  response, which may be relevant in asthma. Estradiol inhibits  $Cl^-$  secretion in the CF lung and up-regulates mucus production, which may be very relevant in CF. Cigarette smoke is de-toxified through Phase I and Phase II enzymes and estrogens may preferentially up-regulate Phase I enzymes, leading to accumulation of toxic metabolites through a process called bioactivation. This may be relevant in the pathophysiology of COPD. Although less well studied than estrogen, progesterone may also play relevant roles in inflammatory airway disease by amplifying airway inflammation. With the rise in the burden of these diseases in women worldwide, there is a pressing need to better understand the biological roles of sex hormones in modulating airway inflammation, mucus production and cigarette de-toxification and other processes relevant to COPD, asthma and CF.

## Abbreviation List

CF: cystic fibrosis; COPD: chronic obstructive pulmonary disease; E2: estradiol; ER: estrogen receptor; HRE: hormone response element; IL: interleukin; MUC5B: mucin 5B; NO: nitric oxide; PR: progesterone receptor; SHBG: sex hormone binding globulin; TNF: tumor necrosis factor

## Author details

<sup>1</sup>The UBC James Hogg Research Centre, Providence Heart + Lung Centre & Department of Medicine, University of British Columbia (UBC), Vancouver, BC, Canada. <sup>2</sup>Department of Medicine, The University of Alberta, Edmonton, AB, Canada.

## Authors' contributions

AT participated in drafting the manuscript. DM, SW, DD, SFPM, and DDS participated in critical revisions. All authors read and approved the final manuscript.

## Competing interests

Anthony Tam - declared no competing interests  
Don Morrish - received funding from GSK/CIHR, and Wyeth Pharmaceuticals.  
Samuel Wadsworth - declared no competing interests  
Delbert Dorscheid - declared no competing interests  
Paul S F Man - received educational grants from Glaxo-Smith-Kline and Astra-Zeneca to support research  
Don D Sin - holds a Canada Research Chair in COPD and a senior clinical scholarship with the Michael Smith Foundation for Health Research (MSFHR) and has received grants from Wyeth Pharmaceuticals, GlaxoSmithKline, AstraZeneca and Pfizer.

Received: 30 August 2010 Accepted: 3 June 2011  
Published: 3 June 2011

## References

- Centers for Disease Control and Prevention: **Asthma prevalence, health care use and mortality**. 2010 [http://www.cdc.gov/nchs/data/hestat/

- asthma/asthma.htm], Date last updated: Feb 3 2010. Date last accessed: Feb 3.
- Wise RA: **Changing smoking patterns and mortality from chronic obstructive pulmonary disease**. *Prev Med* 1997, **26**:418-21.
- Han MK, Postma D, Mannino DM, Giardino ND, Buist S, Curtis JL, Martinez FJ: **Gender and chronic obstructive pulmonary disease: why it matters**. *Am J Respir Crit Care Med* 2007, **176**:1179-84.
- Gillum RF: **Frequency of attendance at religious services and cigarette smoking in American women and men: the Third National Health and Nutrition Examination Survey**. *Prev Med* 2005, **41**:607-13.
- Prescott E, Bjerg AM, Andersen PK, Lange P, Vestbo J: **Gender difference in smoking effects on lung function and risk of hospitalization for COPD: results from a Danish longitudinal population study**. *Eur Respir J* 1997, **10**:822-7.
- Silverman EK, Weiss ST, Drazen JM, Chapman HA, Carey V, Campbell EJ, Denish P, Silverman RA, Celedon JC, Reilly JJ, Ginns LC, Speizer FE: **Gender-related differences in severe, early-onset chronic obstructive pulmonary disease**. *Am J Respir Crit Care Med* 2000, **162**:2152-8.
- Machado MC, Krishnan JA, Buist SA, Bilderback AL, Fazolo GP, Santarosa MG, Queiroga F Jr, Vollmer WM: **Sex differences in survival of oxygen-dependent patients with chronic obstructive pulmonary disease**. *Am J Respir Crit Care Med* 2006, **174**:524-9.
- Canadian Cystic Fibrosis Patient Data Registry. 2002 [http://www.cysticfibrosis.ca/assets/files/pdf/Lay\_CPDR\_reportE.pdf].
- Carey MA, Card JW, Voltz JW, Germolec DR, Korach KS, Zeldin DC: **The impact of sex and sex hormones on lung physiology and disease: lessons from animal studies**. *Am J Physiol Lung Cell Mol Physiol* 2007, **293**:L272-8.
- Payne AH, Hales DB: **Overview of steroidogenic enzymes in the pathway from cholesterol to active steroid hormones**. *Endocr Rev* 2004, **25**:947-70.
- Mendelsohn ME, Karas RH: **Molecular and cellular basis of cardiovascular gender differences**. *Science* 2005, **308**:1583-7.
- Hewitt SC, Harrell JC, Korach KS: **Lessons in estrogen biology from knockout and transgenic animals**. *Annu Rev Physiol* 2005, **67**:285-308.
- Ellmann S, Sticht H, Thiel F, Beckmann MW, Strick R, Strissel PL: **Estrogen and progesterone receptors: from molecular structures to clinical targets**. *Cell Mol Life Sci* 2009, **66**:2405-26.
- Couse JF, Lindzey J, Grandien K, Gustafsson JA, Korach KS: **Tissue distribution and quantitative analysis of estrogen receptor-alpha (ERalpha) and estrogen receptor-beta (ERbeta) messenger ribonucleic acid in the wild-type and ERalpha-knockout mouse**. *Endocrinology* 1997, **138**:4613-21.
- Giannopoulos G, Smith SK: **Androgen receptors in fetal rabbit lung and the effect of fetal sex on the levels of circulating hormones and pulmonary hormone receptors**. *J Steroid Biochem* 1982, **17**:461-5.
- Speroff L, Glass RH, Kase NG: **Clinical Gynecologic Endocrinology and Infertility**. Lippincott William and Wilkins; 1999.
- de Ronde W, van der Schouw YT, Muller M, Grobbee DE, Gooren LJ, Pols HA, Jong de FH: **Associations of sex-hormone-binding globulin (SHBG) with non-SHBG-bound levels of testosterone and estradiol in independently living men**. *J Clin Endocrinol Metab* 2005, **90**:157-62.
- Cheng CY, Musto NA, Gunsalus GL, Frick J, Bardin CW: **There are two forms of androgen binding protein in human testes. Comparison of their protomeric variants with serum testosterone-estradiol binding globulin**. *J Biol Chem* 1985, **260**:5631-40.
- French FS, Ritzen EM: **A high-affinity androgen-binding protein (ABP) in rat testis: evidence for secretion into efferent duct fluid and absorption by epididymis**. *Endocrinology* 1973, **93**:88-95.
- Grishkovskaya I, Avvakumov GV, Sklenar G, Dales D, Hammond GL, Muller YA: **Crystal structure of human sex hormone-binding globulin: steroid transport by a laminin G-like domain**. *EMBO J* 2000, **19**:504-12.
- Siiteri PK, Murai JT, Hammond GL, Nisker JA, Raymoure WJ, Kuhn RW: **The serum transport of steroid hormones**. *Recent Prog Horm Res* 1982, **38**:457-510.
- Dunn JF, Nisula BC, Rodbard D: **Transport of steroid hormones: binding of 21 endogenous steroids to both testosterone-binding globulin and corticosteroid-binding globulin in human plasma**. *J Clin Endocrinol Metab* 1981, **53**:58-68.
- Mendel CM: **The free hormone hypothesis. Distinction from the free hormone transport hypothesis**. *J Androl* 1992, **13**:107-16.



24. Koehler KF, Helguero LA, Haldosen LA, Warner M, Gustafsson JA: **Reflections on the discovery and significance of estrogen receptor beta.** *Endocr Rev* 2005, **26**:465-78.
25. Kuiper GG, Enmark E, Peltö-Huikko M, Nilsson S, Gustafsson JA: **Cloning of a novel receptor expressed in rat prostate and ovary.** *Proc Natl Acad Sci USA* 1996, **93**:5925-30.
26. Tremblay GB, Tremblay A, Copeland NG, Gilbert DJ, Jenkins NA, Labrie F, Giguere V: **Cloning, chromosomal localization, and functional analysis of the murine estrogen receptor beta.** *Mol Endocrinol* 1997, **11**:353-65.
27. Mosselman S, Polman J, Dijkema R: **ER beta: identification and characterization of a novel human estrogen receptor.** *FEBS Lett* 1996, **392**:49-53.
28. Culig Z: **Role of the androgen receptor axis in prostate cancer.** *Urology* 2003, **62**:21-6.
29. Ivanova MM, Mazhawidza W, Dougherty SM, Minna JD, Klinge CM: **Activity and intracellular location of estrogen receptors alpha and beta in human bronchial epithelial cells.** *Mol Cell Endocrinol* 2009, **305**:12-21.
30. Massaro D, Massaro GD: **Estrogen regulates pulmonary alveolar formation, loss, and regeneration in mice.** *Am J Physiol Lung Cell Mol Physiol* 2004, **287**:L1154-9.
31. Massaro D, Massaro GD: **Estrogen receptor regulation of pulmonary alveolar dimensions: alveolar sexual dimorphism in mice.** *Am J Physiol Lung Cell Mol Physiol* 2006, **290**:L866-70.
32. Vegeto E, Cuzzocrea S, Crisafulli C, Mazzon E, Sala A, Krust A, Maggi A: **Estrogen receptor-alpha as a drug target candidate for preventing lung inflammation.** *Endocrinology* 2010, **151**:174-84.
33. Ghisletti S, Meda C, Maggi A, Vegeto E: **17beta-estradiol inhibits inflammatory gene expression by controlling NF-kappaB intracellular localization.** *Mol Cell Biol* 2005, **25**:2957-68.
34. Rosner W: **Plasma steroid-binding proteins.** *Endocrinol Metab Clin North Am* 1991, **20**:697-720.
35. Nakhla AM, Khan MS, Romas NP, Rosner W: **Estradiol causes the rapid accumulation of cAMP in human prostate.** *Proc Natl Acad Sci USA* 1994, **91**:5402-5.
36. Van Winkle LS, Gunderson AD, Shimizu JA, Baker GL, Brown CD: **Gender differences in naphthalene metabolism and naphthalene-induced acute lung injury.** *Am J Physiol Lung Cell Mol Physiol* 2002, **282**:L1122-34.
37. Chichester CH, Buckpitt AR, Chang A, Plopper CG: **Metabolism and cytotoxicity of naphthalene and its metabolites in isolated murine Clara cells.** *Mol Pharmacol* 1994, **45**:664-72.
38. Han W, Pentecost BT, Pietropaolo RL, Fasco MJ, Spivack SD: **Estrogen receptor alpha increases basal and cigarette smoke extract-induced expression of CYP1A1 and CYP1B1, but not GSTP1, in normal human bronchial epithelial cells.** *Mol Carcinog* 2005, **44**:202-11.
39. Mollerup S, Ryberg D, Hewer A, Phillips DH, Haugen A: **Sex differences in lung CYP1A1 expression and DNA adduct levels among lung cancer patients.** *Cancer Res* 1999, **59**:3317-20.
40. Lee AJ, Cai MX, Thomas PE, Conney AH, Zhu BT: **Characterization of the oxidative metabolites of 17beta-estradiol and estrone formed by 15 selectively expressed human cytochrome p450 isoforms.** *Endocrinology* 2003, **144**:3382-98.
41. Schneider J, Kinne D, Fracchia A, Pierce V, Anderson KE, Bradlow HL, Fishman J: **Abnormal oxidative metabolism of estradiol in women with breast cancer.** *Proc Natl Acad Sci USA* 1982, **79**:3047-51.
42. Fishman J, Martucci C: **Biological properties of 16 alpha-hydroxyestrone: implications in estrogen physiology and pathophysiology.** *J Clin Endocrinol Metab* 1980, **51**:611-5.
43. Osborne MP, Bradlow HL, Wong GY, Telang NT: **Upregulation of estradiol C16 alpha-hydroxylation in human breast tissue: a potential biomarker of breast cancer risk.** *J Natl Cancer Inst* 1993, **85**:1917-20.
44. Michnovicz JJ, Hershcopf RJ, Naganuma H, Bradlow HL, Fishman J: **Increased 2-hydroxylation of estradiol as a possible mechanism for the anti-estrogenic effect of cigarette smoking.** *N Engl J Med* 1986, **315**:1305-9.
45. Lu LJ, Cree M, Josyula S, Nagamani M, Grady JJ, Anderson KE: **Increased urinary excretion of 2-hydroxyestrone but not 16alpha-hydroxyestrone in premenopausal women during a soya diet containing isoflavones.** *Cancer Res* 2000, **60**:1299-305.
46. Spivack SD, Hurteau GJ, Fasco MJ, Kaminsky LS: **Phase I and II carcinogen metabolism gene expression in human lung tissue and tumors.** *Clin Cancer Res* 2003, **9**:6002-11.
47. Sin DD, Cohen SB, Day A, Coxson H, Pare PD: **Understanding the biological differences in susceptibility to chronic obstructive pulmonary disease between men and women.** *Proc Am Thorac Soc* 2007, **4**:671-4.
48. Seymour BW, Friebertshauser KE, Peake JL, Pinkerton KE, Coffman RL, Gershwin LJ: **Gender differences in the allergic response of mice neonatally exposed to environmental tobacco smoke.** *Dev Immunol* 2002, **9**:47-54.
49. Hayashi T, Adachi Y, Hasegawa K, Morimoto M: **Less sensitivity for late airway inflammation in males than females in BALB/c mice.** *Scand J Immunol* 2003, **57**:562-7.
50. Ligeiro de Oliveira AP, Oliveira-Filho RM, da Silva ZL, Borelli P, Tavares de Lima W: **Regulation of allergic lung inflammation in rats: interaction between estradiol and corticosterone.** *Neuroimmunomodulation* 2004, **11**:20-7.
51. Melgert BN, Postma DS, Kuipers I, Geerlings M, Luinge MA, van der Strate BW, Kerstjens HA, Timens W, Hylkema MN: **Female mice are more susceptible to the development of allergic airway inflammation than male mice.** *Clin Exp Allergy* 2005, **35**:1496-503.
52. Xystrakis E, Boswell SE, Hawrylowicz CM: **T regulatory cells and the control of allergic disease.** *Expert Opin Biol Ther* 2006, **6**:121-33.
53. de Oliveira AP, Domingos HV, Cavriani G, Damazo AS, Dos Santos Franco AL, Oliani SM, Oliveira-Filho RM, Vargaftig BB, Lima de WT: **Cellular recruitment and cytokine generation in a rat model of allergic lung inflammation are differentially modulated by progesterone and estradiol.** *Am J Physiol Cell Physiol* 2007, **293**:C1120-8.
54. Huber SA, Pfaffle B: **Differential Th1 and Th2 cell responses in male and female BALB/c mice infected with coxsackievirus group B type 3.** *J Virol* 1994, **68**:5126-32.
55. Nikolettos N, Asimakopoulos B, Koster F, Schopper B, Schulz C, Caglar GS, Efthimiadou A, Pagonopoulou O, Diedrich K, Al-Hasani S: **Cytokine profile in cases with premature elevation of progesterone serum concentrations during ovarian stimulation.** *Physiol Res* 2008, **57**:215-24.
56. Asimakopoulos B, Koster F, Felberbaum R, Al-Hasani S, Diedrich K, Nikolettos N: **Cytokine and hormonal profile in blood serum and follicular fluids during ovarian stimulation with the multidose antagonist or the long agonist protocol.** *Hum Reprod* 2006, **21**:3091-5.
57. Daynes RA, Araneo BA: **Contrasting effects of glucocorticoids on the capacity of T cells to produce the growth factors interleukin 2 and interleukin 4.** *Eur J Immunol* 1989, **19**:2319-25.
58. Grossman CJ: **Regulation of the immune system by sex steroids.** *Endocr Rev* 1984, **5**:435-55.
59. Esser C, Radbruch A: **Immunoglobulin class switching: molecular and cellular analysis.** *Annu Rev Immunol* 1990, **8**:717-35.
60. Fitch FW, McKisic MD, Lancki DW, Gajewski TF: **Differential regulation of murine T lymphocyte subsets.** *Annu Rev Immunol* 1993, **11**:29-48.
61. Mosmann TR, Cherwinski H, Bond MW, Giedlin MA, Coffman RL: **Two types of murine helper T cell clone. I. Definition according to profiles of lymphokine activities and secreted proteins.** *J Immunol* 1986, **136**:2348-57.
62. Ackerman LS: **Sex hormones and the genesis of autoimmunity.** *Arch Dermatol* 2006, **142**:371-6.
63. Jeon YH, Yang HJ, Pyun BY: **Lung function in Korean adolescent girls: in association with obesity and the menstrual cycle.** *J Korean Med Sci* 2009, **24**:20-5.
64. Haggerty CL, Ness RB, Kelsey S, Waterer GW: **The impact of estrogen and progesterone on asthma.** *Ann Allergy Asthma Immunol* 2003, **90**:284-91, quiz 291-3, 347.
65. Troisi RJ, Speizer FE, Willett WC, Trichopoulos D, Rosner B: **Menopause, postmenopausal estrogen preparations, and the risk of adult-onset asthma. A prospective cohort study.** *Am J Respir Crit Care Med* 1995, **152**:1183-8.
66. Barr RG, Wentowski CC, Grodstein F, Somers SC, Stampfer MJ, Schwartz J, Speizer FE, Camargo CA Jr: **Prospective study of postmenopausal hormone use and newly diagnosed asthma and chronic obstructive pulmonary disease.** *Arch Intern Med* 2004, **164**:379-86.
67. Romieu I, Fabre A, Fournier A, Kauffmann F, Varraso R, Mesrine S, Leynaert B, Clavel-Chapelon F: **Postmenopausal hormone therapy and asthma onset in the E3N cohort.** *Thorax* 2010, **65**:292-7.
68. Farha S, Asosingh K, Laskowski D, Hammel J, Dweik RA, Wiedemann HP, Erzurum SC: **Effects of the menstrual cycle on lung function variables in women with asthma.** *Am J Respir Crit Care Med* 2009, **180**:304-10.



69. Zimmerman JL, Woodruff PG, Clark S, Camargo CA: **Relation between phase of menstrual cycle and emergency department visits for acute asthma.** *Am J Respir Crit Care Med* 2000, **162**:512-5.
70. Pendino KJ, Laskin JD, Shuler RL, Punjabi CJ, Laskin DL: **Enhanced production of nitric oxide by rat alveolar macrophages after inhalation of a pulmonary irritant is associated with increased expression of nitric oxide synthase.** *J Immunol* 1993, **151**:196-205.
71. Nathan CF: **Secretory products of macrophages.** *J Clin Invest* 1987, **79**:319-26.
72. Mandhane PJ, Hanna SE, Inman MD, Duncan JM, Greene JM, Wang HY, Sears MR: **Changes in exhaled nitric oxide related to estrogen and progesterone during the menstrual cycle.** *Chest* 2009, **136**:1301-7.
73. De Lisle RC: **Pass the bicarb: the importance of HCO<sub>3</sub><sup>-</sup> for mucin release.** *J Clin Invest* 2009, **119**:2535-7.
74. Coakley RD, Sun H, Clunes LA, Rasmussen JE, Stackhouse JR, Okada SF, Fricks I, Young SL, Tarran R: **17beta-Estradiol inhibits Ca<sup>2+</sup>-dependent homeostasis of airway surface liquid volume in human cystic fibrosis airway epithelia.** *J Clin Invest* 2008, **118**:4025-35.
75. Voynow JA, Rubin BK: **Mucins, mucus, and sputum.** *Chest* 2009, **135**:505-12.
76. Rose MC, Voynow JA: **Respiratory tract mucin genes and mucin glycoproteins in health and disease.** *Physiol Rev* 2006, **86**:245-78.
77. Thai P, Loukoianov A, Wachi S, Wu R: **Regulation of airway mucin gene expression.** *Annu Rev Physiol* 2008, **70**:405-29.
78. Smirnova MG, Guo L, Birchall JP, Pearson JP: **LPS up-regulates mucin and cytokine mRNA expression and stimulates mucin and cytokine secretion in goblet cells.** *Cell Immunol* 2003, **221**:42-9.
79. Yoon JH, Kim KS, Kim HU, Linton JA, Lee JG: **Effects of TNF-alpha and IL-1 beta on mucin, lysozyme, IL-6 and IL-8 in passage-2 normal human nasal epithelial cells.** *Acta Otolaryngol* 1999, **119**:905-10.
80. Chen Y, Thai P, Zhao YH, Ho YS, DeSouza MM, Wu R: **Stimulation of airway mucin gene expression by interleukin (IL)-17 through IL-6 paracrine/autocrine loop.** *J Biol Chem* 2003, **278**:17036-43.
81. Voynow JA, Young LR, Wang Y, Horger T, Rose MC, Fischer BM: **Neutrophil elastase increases MUC5AC mRNA and protein expression in respiratory epithelial cells.** *Am J Physiol* 1999, **276**:L835-43.
82. Choi HJ, Chung YS, Kim HJ, Moon UY, Choi YH, Seuningen Van I, Baek SJ, Yoon HG, Yoon JH: **Signal pathway of 17beta-estradiol-induced MUC5B expression in human airway epithelial cells.** *Am J Respir Cell Mol Biol* 2009, **40**:168-78.
83. Audie JP, Janin A, Porchet N, Copin MC, Gosselin B, Aubert JP: **Expression of human mucin genes in respiratory, digestive, and reproductive tracts ascertained by in situ hybridization.** *J Histochem Cytochem* 1993, **41**:1479-85.
84. Zeitlin PL: **Cystic fibrosis and estrogens: a perfect storm.** *J Clin Invest* 2008, **118**:3841-4.
85. Knowles MR, Boucher RC: **Mucus clearance as a primary innate defense mechanism for mammalian airways.** *J Clin Invest* 2002, **109**:571-7.
86. Johannesson M, Ludviksdottir D, Janson C: **Lung function changes in relation to menstrual cycle in females with cystic fibrosis.** *Respir Med* 2000, **94**:1043-6.
87. Kharitonov SA, Logan-Sinclair RB, Busset CM, Shinebourne EA: **Peak expiratory nitric oxide differences in men and women: relation to the menstrual cycle.** *Br Heart J* 1994, **72**:243-5.
88. Chotirmall SH, Greene CM, Oglesby IK, Thomas W, O'Neill SJ, Harvey BJ, McElvaney NG: **17[beta]-Estradiol Inhibits IL-8 in Cystic Fibrosis by Up-Regulating Secretory Leucoprotease Inhibitor.** *Am J Respir Crit Care Med* 2010.

#### Pre-publication history

The pre-publication history for this paper can be accessed here:  
<http://www.biomedcentral.com/1472-6874/11/24/prepub>

doi:10.1186/1472-6874-11-24

**Cite this article as:** Tam et al.: The role of female hormones on lung function in chronic lung diseases. *BMC Women's Health* 2011 **11**:24.

**Submit your next manuscript to BioMed Central and take full advantage of:**

- Convenient online submission
- Thorough peer review
- No space constraints or color figure charges
- Immediate publication on acceptance
- Inclusion in PubMed, CAS, Scopus and Google Scholar
- Research which is freely available for redistribution

Submit your manuscript at  
[www.biomedcentral.com/submit](http://www.biomedcentral.com/submit)

