

Role of Androgen Receptor in Progression of LNCaP Prostate Cancer Cells from G₁ to S Phase

Shalini Murthy, Min Wu, V. Uma Bai, Zizheng Hou, Mani Menon, Evelyn R. Barrack, Sahn-Ho Kim, G. Prem-Veer Reddy*

Vattikuti Urology Institute, Henry Ford Hospital, Detroit, Michigan, United States of America

Abstract

Background: The androgen receptor (AR) plays a critical role in the proliferation of prostate cancer cells. However, its mechanism of action in proliferation remains unknown. An understanding of the mechanism of AR action in proliferation may lead to the development of effective strategies for the treatment of prostate cancer.

Methodology/Principal Findings: In this study we report that pulse treatment of synchronized LNCaP cells with Casodex, an AR-antagonist, for 4 hours in mid-G₁ phase was sufficient to prevent cells from entering S phase. Since the assembly of pre-replication complex (pre-RC) in G₁ is required for the progression of cells from G₁ to S phase, the effect of Casodex during mid-G₁ suggested that the role of AR in proliferation might be to regulate the assembly of pre-RC. To test this possibility, we investigated the interaction between AR and Cdc6, an essential component of pre-RC in LNCaP cells. AR co-localized and co-immunoprecipitated with Cdc6, and Casodex treatment disrupted this interaction. AR-immunoprecipitate (AR-IP) also contained cyclin E and cyclin A, which play a critical role in pre-RC assembly and cell cycle entry into S phase, and DNA polymerase- α , PCNA, and ribonucleotide reductase, which are essential for the initiation of DNA synthesis. In addition, in cells in S phase, AR co-sedimented with components of the DNA replication machinery of cells that entered S phase.

Conclusions/Significance: Together, these observations suggest a novel role of AR as a component of the pre-RC to exert control over progression of LNCaP cells from G₁ to S phase through a mechanism that is independent of its role as a transcription factor.

Citation: Murthy S, Wu M, Bai VU, Hou Z, Menon M, et al. (2013) Role of Androgen Receptor in Progression of LNCaP Prostate Cancer Cells from G₁ to S Phase. PLoS ONE 8(2): e56692. doi:10.1371/journal.pone.0056692

Editor: Antimo Migliaccio, II Università di Napoli, Italy

Received: August 16, 2012; **Accepted:** January 14, 2013; **Published:** February 20, 2013

Copyright: © 2013 Murthy et al. This is an open-access article distributed under the terms of the Creative Commons Attribution License, which permits unrestricted use, distribution, and reproduction in any medium, provided the original author and source are credited.

Funding: This work was supported in part by grant W81XWH-05-1-0071 from the Department of Defense to GPR. The funders had no role in study design, data collection and analysis, decision to publish, or preparation of the manuscript.

Competing Interests: The authors have declared that no competing interests exist.

* E-mail: preddy1@hfhs.org

Introduction

Prostate cancer is the most frequently diagnosed non-skin cancer and second leading cause of cancer deaths in American men [1]. Androgen, by activating androgen receptor (AR), plays an important role in both the development and progression of prostate cancer. Hence, androgen ablation by pharmacological or surgical castration [2] remains frontline therapy for the treatment of locally advanced or disseminated prostate cancer. However, although the disease initially regresses in response to androgen ablation, it eventually relapses to become castration resistant [3,4]. Remarkably however, despite the continued use of this treatment strategy for over 70 years, very little is known about the mechanism by which AR regulates prostate cancer cell proliferation. An understanding of the mechanism of AR action in proliferation may lead to the development of more effective strategies for the treatment of prostate cancer.

Castration-resistant growth of prostate cancer is often associated with increased expression of AR [5,6,7]. AR remains indispensable for the proliferation of prostate cancer cells that have become castrate-resistant; AR-specific shRNA or siRNA blocks prolifera-

tion of androgen-sensitive as well as castration-resistant AR-positive prostate cancer cells [8,9,10,11,12]. In addition, micro-injection of AR-specific antibody into the nucleus or treatment of cells with AR mRNA hammerhead ribozyme inhibits the proliferation of AR-positive, but not AR-negative, prostate cancer cells [13], indicating a critical role of AR in proliferation of AR-expressing prostate cancer cells. Interestingly, the role of AR in proliferation of prostate cancer cells seems to be independent of its function as a transcription factor, at least in castrate resistant CWR22R3 human prostate cancer cells (derived from the CWR22 xenografts), in which AR-dependent proliferation is ligand independent but AR transcriptional activity remains ligand-dependent [11]. Collectively, these observations invoke the possibility that, besides its role as a transcription factor, AR may play a direct role in cell cycle regulatory events required for proliferation of prostate cancer cells. A direct role of AR in regulating proliferation contrasts with the notion of an indirect role in which AR transcriptional activity regulates the expression of factors required for cell cycle progression.

Cell cycle progression from G₁ to S phase is fundamental to proliferation. We reported previously that Casodex (bicalutamide),

a specific inhibitor of AR, blocks the ability of G₁ phase AR-positive LNCaP prostate cancer cells to enter S phase [14,15], indicating a role of AR in cell cycle progression from G₁ to S phase. Progression of cells from G₁ to S phase requires a cascade of sequential events in G₁ phase that contribute to the assembly of the DNA replication machinery in cells that enter S phase. These events include a) loading of Cdc6, replication licensing factor RLF-B/Cdt1, and mini-chromosome maintenance (Mcm) proteins onto the origin recognition complex (ORC) to form pre-replication complex (pre-RC), and b) unwinding of DNA by helicase (Cdc45) associated with pre-RC, and the assembly of enzymes of DNA synthesis to form mega-complexes required for initiation of DNA synthesis at the origins of DNA replication (see Reddy et al [16] for a review).

In this study, we investigated whether AR interacts with the components of pre-RC and DNA replication machinery. Our studies demonstrate for the first time that AR is required in mid-G₁ phase, at the time when pre-RC assembly is known to begin, in order for LNCaP cells to enter S phase, and that AR is associated with cell cycle regulatory proteins and enzymes of DNA synthesis in a multienzyme complex isolated from S phase cells. These observations suggest AR involvement in proliferation through its interaction with cell cycle regulatory proteins and enzymes of DNA synthesis required for the onset of DNA synthesis and the progression of LNCaP cells from G₁ to S phase.

Materials and Methods

Cell Culture

LNCaP cells were maintained in RPMI medium (Gibco BRL, Rockville, MD) containing 10% fetal calf serum (FCS), 2.5 mM glutamine, 100 µg/ml streptomycin, and 100 U/ml penicillin (complete medium) in a humidified incubator with 5% CO₂ and 95% air at 37°C.

RNA Isolation, RT-PCR, and Real-time RT-PCR (qRT-PCR)

RNA was isolated from control and Casodex treated cells and subjected to RT-PCR to determine PSA and GAPDH expression as described previously [14]. The primer sequences used for PSA are: 5'-gcaccggagagctgtg (forward) and 5-gatcacgctttgtctctgat (reverse) primers, and for GAPDH are 5'-gagatccctccaaatcaagt (forward) and 5'-ccttcacgataccaaagtgt (reverse). GAPDH was used as an internal control. The densitometry of the RT-PCR bands was performed as described previously [14]. qRT-PCR was performed on an Applied Biosystems 7500 Fast Real-Time PCR System (Applied Biosystems, Foster City, CA) by using Taqman gene expression assays for PSA (Assay Id: Hs02576345_m1) and 18S RNA (Assay Id: Hs03928985_g1) as described previously [17]. The relative level of PSA expression was quantified by using comparative $\Delta\Delta C_t$ with 18S RNA as internal control.

Synchronization of LNCaP Cells by Isoleucine Deprivation

Isoleucine deprivation was carried out by our previously published method [15]. Cells were grown to 60% to 70% confluence, and then the medium was replaced with isoleucine-free RPMI 1640 (Life Technologies, Carlsbad, CA) supplemented with 6% dialyzed FCS (Life Technologies, Carlsbad, CA), 2.5 mM glutamine, 100 µg/ml streptomycin, and 100 units/ml penicillin. Cells were maintained in isoleucine-free medium for 36 hours in an incubator as above. Cells were released from isoleucine-block by replacing the medium with the complete medium containing 10% FCS and treated with Casodex (bicalutamide, gift from Astra Zeneca, England, UK) as indicated.

Since entry of cells into S phase is marked by the onset of DNA synthesis, the progression of synchronized cells from G₁ to S phase was monitored by determining the ability of cells to incorporate ³H-thymidine into DNA as described previously [14,15]. At regular intervals after release from isoleucine-block, cells were pulse-labeled with 2 µCi/ml ³H-thymidine (ICN Biomedicals, Inc., Costa Mesa, CA) for 30 minutes at 37°C in a humidified incubator. The radioactivity incorporated into acid-precipitable material was then determined as described [15].

Preparation of Cell Extracts and Immunoprecipitation

Exponentially growing LNCaP cells harvested by scraping into phosphate-buffered saline (PBS) were pelleted by centrifugation for 10 minutes at 4°C at 2,000 rpm in a Sorvall RT7 centrifuge and resuspended in immunoprecipitation (IP) buffer (50 mM Tris-HCl, pH 7.4, 0.1% Triton X-100, 5 mM EDTA, 250 mM NaCl, 2 mM CaCl₂, 50 mM NaF, and 0.1 mM Na₃VO₄) supplemented with protease inhibitor cocktail (P-8340, Sigma Chemical Co., St Louis, MO) at a density of approximately 1 × 10⁷ cells/ml. The cell suspension was then subjected twice to 30 pulses of sonication using a Branson Sonifier 250 (Branson Sonic Power Co., Danbury, CT), set at an output control of 2 and a duty cycle of 20, with intermittent cooling on ice. The sonicated cell extract was cleared by centrifugation in an Eppendorf Centrifuge 5415R at 6,000 rpm for 5 minutes at 4°C. Protein concentration in cleared extracts was assessed using BioRad Protein Assay reagent (Bio-Rad Laboratories, Hercules, CA).

For immunoprecipitation, cell extracts were diluted 5-fold in IP buffer supplemented with protease inhibitor cocktail and incubated at 4°C overnight with 4 µg/ml anti-AR antibodies (AR-N20 or AR-441) or anti-Cdc6 antibodies (H-304) (Santa Cruz Biotech, Santa Cruz, CA). Immune complexes were then adsorbed to Pierce Protein A/G Agarose beads (Thermo Scientific, Philadelphia, PA) for 2 hours at 4°C with gentle agitation. The adsorbed complexes were washed three times with IP buffer by centrifugation in an Eppendorf Centrifuge 5415R at 6,000 rpm for 5 minutes at 4°C, and then eluted with PAGE loading buffer (Bio-Rad, Richmond, CA). Control immunoprecipitates were prepared by using 4 µg/ml purified mouse or rabbit IgG (Antibodies Incorporated, Davis, CA) in place of anti-AR or anti-Cdc6 antibodies.

Isolation of DNA Replication Complex Fraction from Nuclear Lysate

Synchronized LNCaP cells in G₁ phase (1 hour after release from isoleucine-block) or in S phase (24 hours after release from isoleucine-block) were harvested and the nuclear lysate was prepared by a slight modification of the method of Subramanyam et al [18]. Harvested cells were pelleted by centrifugation for 10 minutes at 4°C at 2,000 rpm in a Sorvall RT7 centrifuge and resuspended in buffer A [0.16 M sucrose, 50 mM Tris-HCl (pH 7.6), 25 mM KCl, 10 mM MgCl₂, 70 mM HEPES (pH 7.6), 0.025 mM CaCl₂, 1 mM phenylmethylsulfonyl fluoride (PMSF), 2 mM DTT, 1 mM EDTA] at a density of 2 × 10⁷ cells/ml. The cell suspension was then homogenized in a motor-driven Wheaton homogenizer (Wheaton Co., Wheaton, IL) until ~90% of the cells were stained with trypan blue dye (usually three strokes at a rotation setting of 3). The cytosolic supernatant was then separated from the nuclear pellet by centrifugation in an Eppendorf Centrifuge 5415R at 6,000 rpm for 5 minutes at 4°C. The nuclear pellet was suspended in a volume of buffer A equal to that used for homogenization and subjected twice to 30 pulses of sonication with a Branson Sonifier 250 (Branson Co., Danbury, CT) set at an output control of 2 and a duty cycle of 20,

with intermittent cooling on ice. The sonicated nuclear extract was cleared by centrifugation in an Eppendorf Centrifuge 5415R at 6,000 rpm for 5 minutes at 4°C. The DNA replication complex fraction was then isolated by subjecting the nuclear lysate to sucrose density gradient centrifugation essentially as described by Reddy and Pardee [19]. Nuclear lysate (0.5 ml) was layered over a 4.8 ml linear gradient of 20–40% (wt/vol) sucrose in buffer A, which in turn was layered over a 66% sucrose pad (0.5 ml) and centrifuged in a Beckman SW 50.1 rotor at 4°C for 16 hours at 35,000 rpm. The gradient was then resolved into 0.5 ml fractions and the rapidly sedimenting fraction that contained DNA polymerase activity is referred to as the replisome complex fraction as described by Murthy and Reddy [20]. The complex fraction from G₁ or S phase cells was then subjected to Western blot analysis to assess the presence of enzymes of DNA synthesis and cell cycle regulatory proteins.

Western Blot Analysis

Samples were dissolved in PAGE loading buffer (Bio-Rad, Richmond, CA) and subjected to denaturing 10% polyacrylamide gel electrophoresis (SDS-PAGE) and then transferred to nitrocellulose membranes. Individual membranes were probed with antibodies against AR (AR-N20 or AR-441), Cdc6 (H-304), prostate specific antigen (PSA, C-19), Lamin B, DNA polymerase- α (STK1), PCNA (PC10), ribonucleotide reductase (R2, E-16), cyclin A (H-432), cyclin E (C-19) (all from Santa Cruz Biotech, Santa Cruz, CA), p27^{Kip-1}, cyclin B (BD Transduction Lab, San Jose, CA), caspase 3 (Cell Signalling, Danvers, MA), or GAPDH (Chemicon, Temecula, CA). Immunoreactive bands were developed using horseradish peroxidase-conjugated secondary antibodies and SuperSignal WestPico chemiluminescent substrate (Pierce, Rockford, IL) and visualized using X-ray film.

Immunofluorescent Staining and Confocal Microscopy

LNCaP cells grown on glass slides were washed once with PBS, followed by fixation in 3.7% (vol/vol) formaldehyde for 20 minutes at 22°C. Cells were permeabilized in 0.5% (vol/vol) Triton X-100 for 15 minutes and blocked for 1 hour in 2% (wt/vol) BSA at 22°C. Slides were then incubated for 1 hour at 22°C with antibodies against AR (AR-N20 or AR-441) and Cdc6 or DNA polymerase- α followed by both goat-anti-mouse-fluorescein isothiocyanate (FITC)- and goat-anti-rabbit-tetramethylrhodamine B isothiocyanate (TRITC)-labeled secondary antibodies (Sigma-Aldrich, St. Louis, MO). After four washes with PBS, slides were mounted with Aqua-Poly/Mount (Polysciences Inc., Warrington, PA). Confocal laser scanning microscopy was performed with a Zeiss LSM 410 upright confocal microscope. Images were processed, and colocalization analysis (which is colored yellow) was performed with a Zeiss LSM 410 Meta Excitation system with collection at 488 and 543 nm. Intensity Correlation Quotient (ICQ) analysis to quantify AR colocalization with Cdc6 or DNA polymerase- α was performed by using ImageJ software (NIH, Bethesda, MD).

Immunofluorescent Detection of Bromodeoxyuridine (BrdU) Incorporated into DNA

LNCaP cells grown on glass slides were labeled with 10 μ M BrdU (Sigma-Aldrich, St. Louis, MO) for 30 minutes, washed once with PBS and fixed in 3.7% formaldehyde for 20 min at 22°C. Cells were permeabilized in 0.5% (v/v) Triton X-100 for 15 min and blocked for 1 hour in 2% (w/v) bovine serum albumin at 22°C. Cells were then stained with mouse monoclonal antibodies against BrdU (Sigma-Aldrich, St. Louis, MO), followed by goat-

anti-mouse-FITC-labeled secondary antibody. Slides were mounted with Vectashield Mounting Medium containing DAPI (Vector Laboratories, Burlingame, CA) and photomicrography was performed with a Zeiss Axiofot microscope equipped for epifluorescence.

Results

Use of Casodex to Determine the Role of AR in the Cell Cycle of Synchronized LNCaP Cells

AR knockdown strategies have been used to demonstrate that AR is required for proliferation of prostate cancer cells [8,9,10,11,12]. However, AR knockdown by siRNA or shRNA requires treatment of prostate cancer cells over a period of several days. Thus, this approach can not be used to identify when in the cell cycle (i.e., G₁, S, or G₂/M phases) AR is required for proliferation of LNCaP cells, as each phase of the cell cycle lasts no more than few hours. Therefore, we used the non-steroidal anti-androgen Casodex (bicalutamide) to selectively and acutely inhibit AR in order to determine the role of AR in progression of synchronized LNCaP cells through G₁ and S phases.

Casodex is usually used at 10 to 20 μ M to inhibit androgen-induced AR transcriptional activity; but in those experiments, the cells are in charcoal-stripped serum (CSS)-containing medium [21,22]. However, synchronized cells released into CSS-containing medium will not progress through the cell cycle. We compared the effectiveness of Casodex on the expression of prostate specific antigen (PSA), a specific AR-target gene [23], in LNCaP cells in FCS- vs. CSS- medium. Androgen-deprivation of cells in CSS-medium decreased PSA expression to ~50% of that in control cells in FCS-medium and Casodex caused a further decrease (Figs. 1A and 1B). Casodex at 75–100 μ M in FCS-medium had the same effect on PSA expression as 25–50 μ M Casodex in CSS-medium (Figs. 1A and 1B). Notably, when the dose-dependent response to Casodex is plotted relative to its own control (in FCS vs. CSS), the curves overlap, indicating that the IC₅₀ to inhibit AR activity is \approx 50 μ M Casodex in either FCS or CSS (Fig. 1C). Cells treated with 100 μ M Casodex in FCS-medium were morphologically similar to those treated with 20 μ M Casodex in CSS-medium, and 100 μ M Casodex in FCS-medium caused no noticeable cell death, as determined by the Trypan Blue exclusion method (data not shown). Therefore, we used 100 μ M Casodex, a maximally effective concentration to inhibit AR activity, to determine the role of AR in proliferation of LNCaP cells in FCS-medium. This concentration is similar to that used to inhibit PSA expression or growth of LNCaP cells in the presence of FCS [24,25,26].

LNCaP Cell Entry into S Phase Requires Functional AR during Mid-G₁ Phase

We have shown previously that isoleucine deprivation causes LNCaP cells to arrest in G₀/G₁ phase [15,27]. Upon release from isoleucine-block, i.e., transfer into complete medium containing FCS (FCS-medium), these cells progress through G₁ and enter S phase 12 hours after release, and reach a peak of S phase 10–12 hours thereafter [15]. We have also shown that Casodex treatment for 24 hours starting from the time of release from isoleucine-block abrogates the ability of cells to enter S phase [14,15]. While this suggested a role of AR in the cell cycle, that experimental design cannot distinguish between a role of AR in G₁ vs. S phase. Therefore, in order to distinguish between an inhibitory effect of Casodex in G₁ vs. in S phase, we treated synchronized LNCaP cells with Casodex starting at 0, 4, 8, 12, or 16 hours after release from isoleucine-block, and determined the ability of cells to

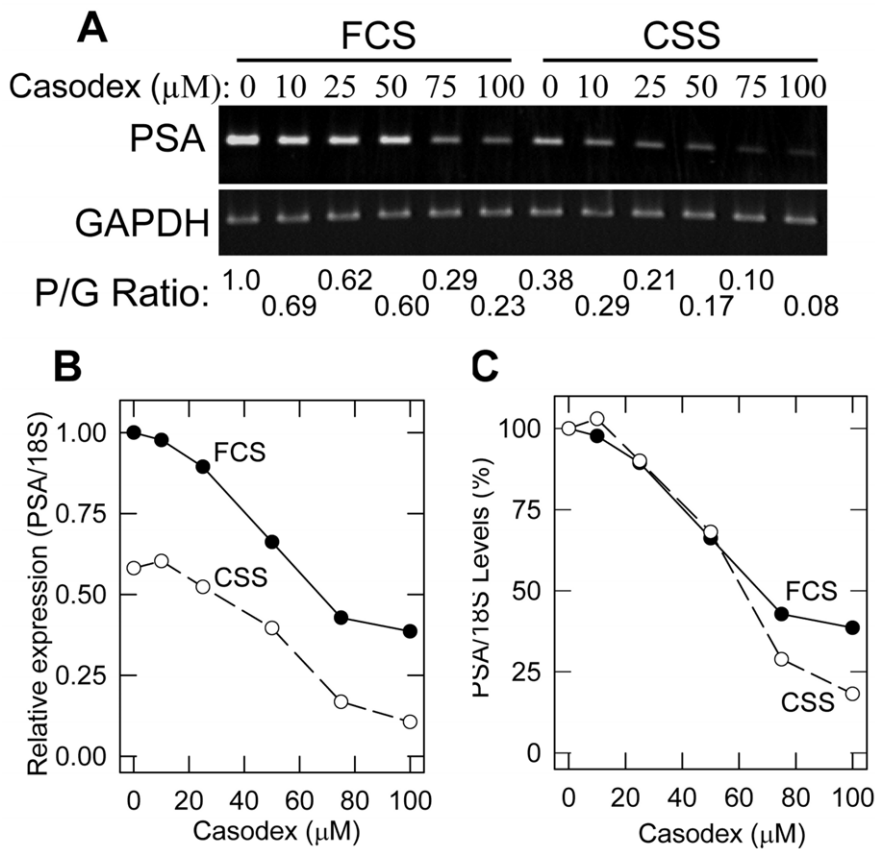


Figure 1. Casodex dose-response inhibition of LNCaP cell AR activity in FCS- vs. CSS- containing medium. Exponentially growing LNCaP cells were washed twice with serum- and hormone- free medium and transferred to RPMI medium containing 10% fetal calf serum (FCS) or 6% charcoal-stripped serum (CSS). After 24 hours, Casodex was added and cells were incubated for an additional 24 hours. RNA isolated from control and Casodex treated cells was subjected to RT-PCR and qRT-PCR analysis of PSA as described in Materials and Methods. (A) RT-PCR products of PSA and GAPDH separated on 1% agarose gel. The ratio of band density PSA/GAPDH (P/G ratio) of cells in FCS without Casodex was set at 1.0 and the P/G ratio of other treatment conditions is expressed relative to this control. (B) Relative PSA levels, as determined by qRT-PCR, are plotted as a function of Casodex concentration. And (C) Relative PSA levels in Fig. 1B are plotted as a percentage of control without Casodex calculated separately for FCS- and CSS- medium. Closed circle, FCS-medium; and open circles, CSS-medium. The data is representative of two independent experiments. doi:10.1371/journal.pone.0056692.g001

incorporate ^3H -thymidine (^3H -TdR) at 20 hours after release, a time when control cells are in S phase (see schematic of Fig. 2A). As shown in Fig. 2A, Casodex maximally inhibited ^3H -TdR incorporation if added any time during G_1 phase (i.e., 0, 4, or 8 hours after release), indicating a role of AR in G_1 . By contrast, the Casodex effect was blunted if treatment was delayed until 12–16 hours after release from isoleucine-block, a time when the cells have already committed to enter S phase. Casodex treatment of cells that had already entered S phase (16 hours after release from isoleucine-block) had very little effect on ^3H -TdR incorporation (Fig. 2A). Thus, the inhibitory effect of Casodex occurs in G_1 phase, when cells are preparing to enter S phase, and not in S phase. Therefore, AR is required in G_1 for cells to enter S phase.

We then determined when in G_1 phase Casodex is most effective in suppressing cell entry into S phase. We pulse treated synchronized LNCaP cells with Casodex during the first, second, or third 4-hour interval following release from isoleucine-block, corresponding to early- G_1 , mid- G_1 , or late- G_1 , respectively, and determined the rate of ^3H -TdR incorporation into DNA at 4-hour intervals for 24 hours (see schematic of Fig. 2B). We have shown previously that ^3H -TdR incorporation offers a reliable and reproducible method to monitor the progression of synchronized cells from G_1 to S phase and is corroborated by flow cytometry

analysis as well as the expression of S phase-specific cyclins and the activation of cyclin-dependent kinases [14,15]. As shown in Fig. 2B, treatment with Casodex during mid- G_1 (4–8 hours after release from isoleucine-block) was more effective at blocking entry into S phase than was treatment during early- G_1 (0–4 hours after release from isoleucine-block) or late- G_1 phase (8–12 hours after release from isoleucine-block). This suggests AR involvement in cell cycle regulatory events in mid- G_1 phase that are critical for LNCaP cells to progress from G_1 to S.

AR Interacts with Cdc6, a Critical Component of Pre-RC Required for the Assembly of Replication Machinery in S Phase LNCaP Cells

Since Casodex treatment in mid- G_1 blocked the ability of synchronized LNCaP cells to enter S phase (Fig. 2), we tested whether AR interacts with cell cycle regulatory proteins involved in the assembly of pre-RC, as assembly of pre-RC in mid- to late- G_1 is required for cells to enter S phase and initiate DNA synthesis. Cdc6 binding to the origin recognition complex (ORC) is the first step in the process of pre-RC assembly [16]. We observed that an immunoprecipitate prepared using Cdc6-specific antibodies (Cdc6-IP) contained AR, suggesting AR interaction with Cdc6 (Fig. 3A). This interaction is specific since one of the

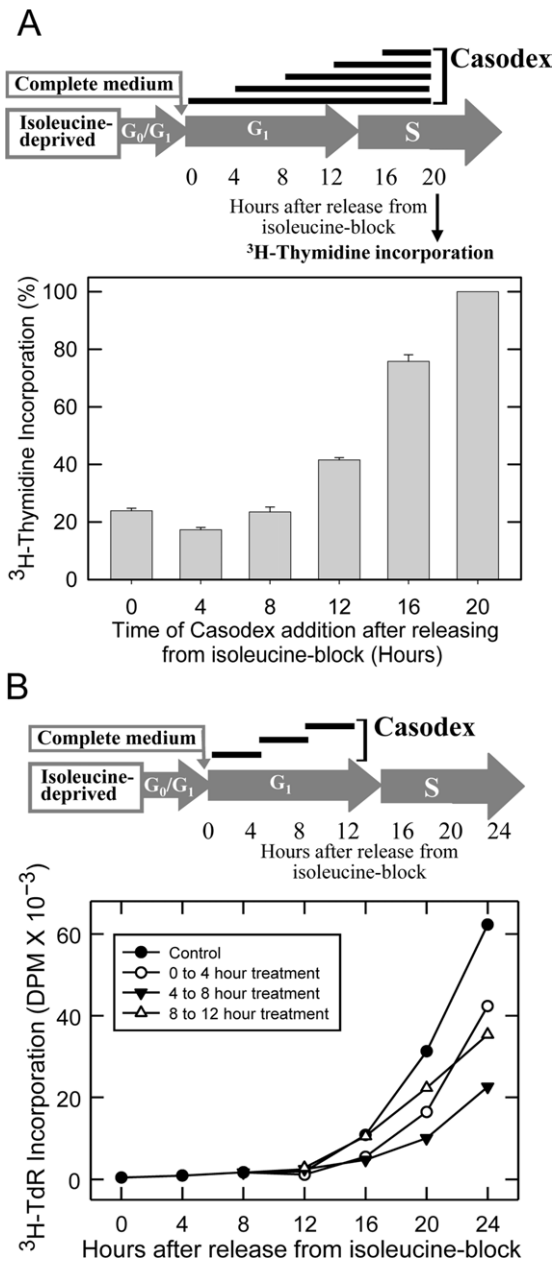


Figure 2. Casodex inhibits the progression of synchronized LNCaP cells from G₁ to S phase: LNCaP cells were synchronized by isoleucine-deprivation and released into complete medium. A) Casodex was added at the indicated time after release from isoleucine-block and maintained in the medium until ³H-TdR incorporation was determined at 20 hours after release from isoleucine-block. Results are expressed as percentage of ³H-TdR incorporation in control cells that were released into complete medium in the absence of Casodex. A) Casodex was added for a 4-hour period as shown in the top panel, and ³H-thymidine (³H-TdR) incorporation into DNA was determined every 4 hours after release from isoleucine-block and after removal of Casodex. Each data point is the average of triplicate samples with <10% variation; data shown are representative of two independent experiments. doi:10.1371/journal.pone.0056692.g002

most abundantly expressed proteins, prostate-specific antigen (PSA), in LNCaP cells was not associated with Cdc6-IP (Fig. 3A). We have shown previously that the interaction between cell cycle regulatory proteins and enzymes of DNA synthesis in a variety of cells leads to the assembly of a multienzyme complex called

replisome or DNA replication machinery [28,29,30]. These complexes are readily detectable in cells that are in S phase, but not any time during G₁ phase [29,30]. Therefore, we tested whether AR-Cdc6 interaction is a cell cycle-dependent phenomenon. As shown in Fig. 3B, although Cdc6 was present at a low level in G₁ phase cells, its association with AR-IP was seen in synchronized LNCaP cells that were in S phase but not in those that were in G₁ phase. By comparison, lamin B, a nuclear protein, showed very little difference in its association with AR-IP from G₁ vs. S phase cells (Fig. 3B). Thus, AR exhibits a cell cycle-dependent interaction with Cdc6.

Casodex Disrupts AR-Cdc6 Interaction

Since AR is implicated to play a role in regulation of Cdc6 expression [14,31], we tested whether Casodex-induced blockade of the entry of LNCaP cells into S phase is due to a decrease in Cdc6 protein levels. In fact, under the experimental conditions employed in the present study, Casodex had no noticeable effect on either Cdc6 or AR protein levels in exponentially growing LNCaP cells (Fig. 4A, Input). Nonetheless, Casodex disrupted AR interaction with Cdc6 as indicated by the presence of Cdc6 in AR-IP of control cells but not in that of Casodex treated cells (Fig. 4A, AR-IP). This Casodex-induced disruption of AR association with Cdc6 was further supported by confocal microscopy (Fig. 4B); we observed a noticeable decrease in the colocalization of AR with

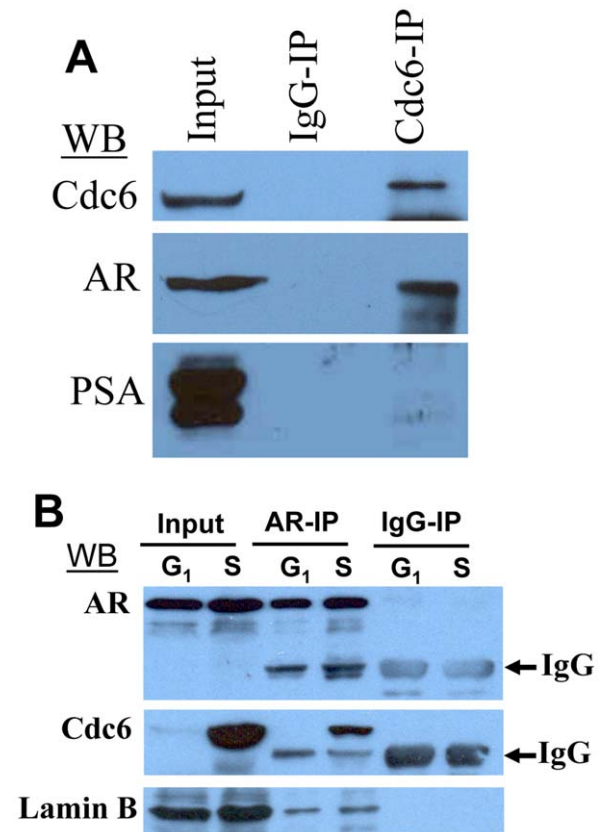


Figure 3. AR in LNCaP cell extracts co-immunoprecipitates with Cdc6: A) Cdc6-IP was prepared from exponentially growing LNCaP cells and was subjected to Western blot analysis. B) AR-IPs were prepared from synchronized G₁ phase (1 hour after release from isoleucine-block) or S phase (20 hours after release from isoleucine-block) LNCaP cells, and subjected to Western blot analysis. IgG heavy chain in AR-IP and IgG-IP is indicated by arrow. doi:10.1371/journal.pone.0056692.g003

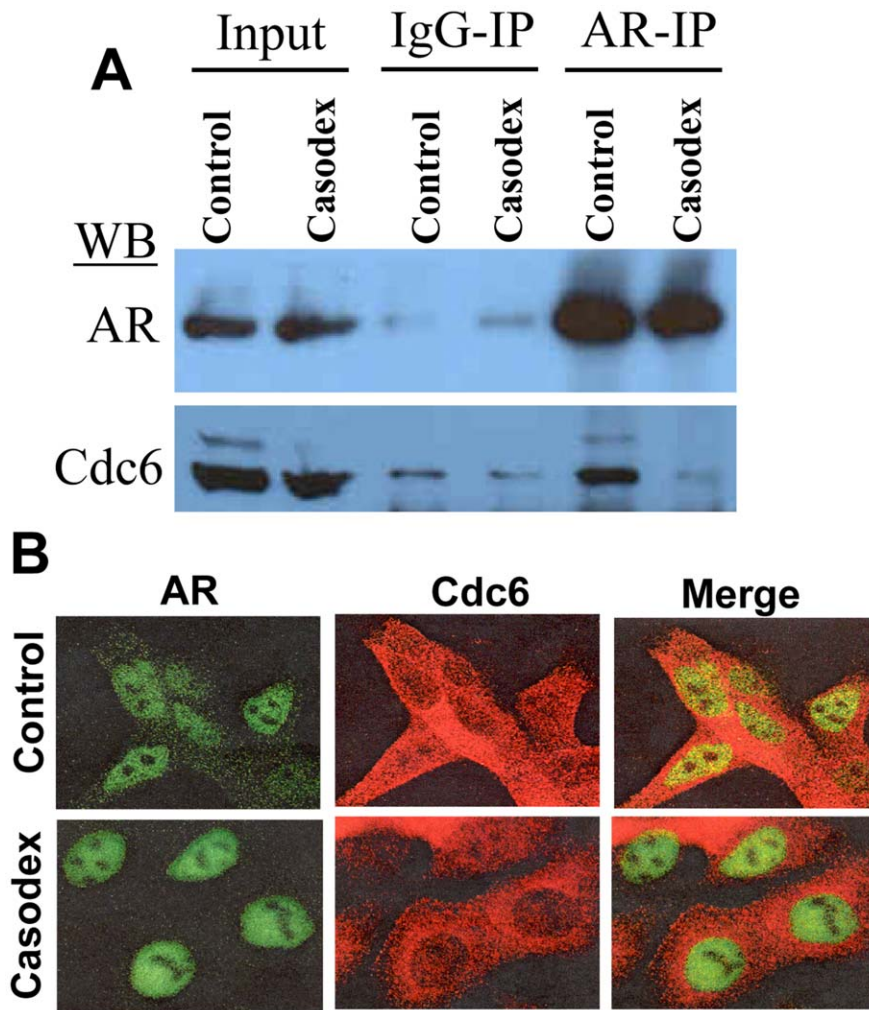


Figure 4. Casodex inhibits AR-Cdc6 interaction in LNCaP cells: A) Exponentially growing LNCaP cells were treated with Casodex or vehicle (control) for 24 hours and AR-IP prepared from treated and control cells was subjected to Western blot analysis to detect AR and Cdc6. B) LNCaP cells grown on slides were synchronized by isoleucine-deprivation and released into complete medium in the presence of vehicle (control) or Casodex. At 24 hours after release from isoleucine-block (when control cells are expected to enter S phase), cells were fixed and processed for immunofluorescent staining using anti-AR (AR-441) mouse monoclonal and anti-Cdc6 (H-304) rabbit polyclonal antibodies. doi:10.1371/journal.pone.0056692.g004

Cdc6 in the nuclei of Casodex treated cells ($ICQ = 0.059 \pm 0.022$ SD) as compared to control cells ($ICQ = 0.152 \pm 0.047$ SD). Thus, Casodex-induced suppression of the entry of LNCaP cells into S phase is associated with the disruption of AR-Cdc6 interaction.

AR Interacts with S Phase Cyclins

Besides Cdc6, some of the cell cycle regulatory proteins, such as cyclins E and A, also play an important role in the assembly of pre-RC in G_1 [16]. Therefore, we tested whether AR interacts with any of the cyclins that are known to be involved in the progression of cells from G_1 to S phase (viz., cyclins E and A) and G_2/M (viz., cyclin B) phases in LNCaP cells. We observed that cyclin E and cyclin A, but not a mitotic cyclin, cyclin B, were associated with AR-IP prepared from exponentially growing LNCaP cells (Fig. 5). By comparison, GAPDH, a cytosolic marker, was not associated with AR-IP. Thus, AR exhibits a specific interaction with cell cycle regulatory proteins that are involved in regulation of cell entry into S phase.

AR Interacts with Enzymes of DNA Synthesis

Since Cdc-6-dependent assembly of pre-RC leads to the recruitment of enzymes of DNA synthesis to the sites of DNA replication [16], and since AR interacts with Cdc6 (Fig. 3), we tested whether AR-IP also contains enzymes of DNA synthesis. As shown in Fig. 6, we observed that AR-IP prepared using two different AR antibodies (AR-N20 and AR-441) contained DNA polymerase- α , a key enzyme involved in initiation of DNA synthesis (Fig. 6A). AR interaction with DNA polymerase- α was further corroborated by immunofluorescent confocal microscopy (Fig. 6B); we observed a strong colocalization of AR with DNA polymerase- α ($ICQ = 0.45 \pm 0.016$ SD) in the nuclei of LNCaP cells. In addition to DNA polymerase- α , AR-IP prepared using AR-441 and AR-N20 antibodies contained proliferating cell nuclear antigen (PCNA), an auxiliary protein of DNA polymerase, and the catalytic subunit of ribonucleotide reductase (RNR2), which converts ribonucleotides to deoxyribonucleotides required for DNA synthesis (Fig. 6C). In addition to its role in proliferation [8,9,10,11,12], AR is also reported to play a critical role in survival of LNCaP cells, as AR knockdown leads to apoptotic cell death

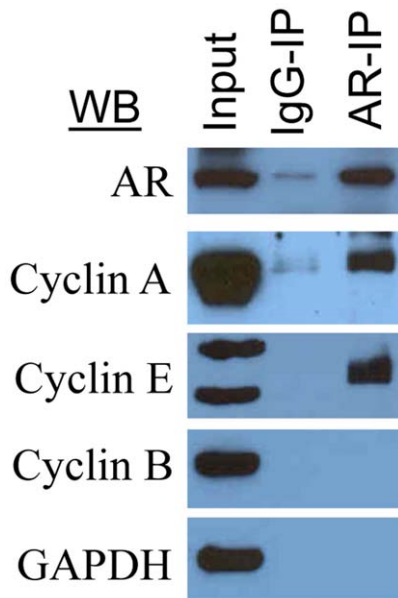


Figure 5. AR-IP contains cyclin A and cyclin E, but not cyclin B: AR-IP prepared from exponentially growing LNCaP cells was subjected to Western blot analysis.
doi:10.1371/journal.pone.0056692.g005

[32]. Therefore we tested whether the role of AR in regulation of apoptosis also involves its interaction with apoptotic proteins. As shown in Fig. 6A, caspase-3, an apoptotic enzyme, was not detected in AR-IPs. Thus, AR exhibits a selective interaction with the enzymes of DNA synthesis required for the proliferation of LNCaP cells.

Enzymes of DNA Synthesis Co-sediment with AR in Nuclear Lysate of S, but not G₁, Phase LNCaP Cells

Progression of cells from G₁ to S phase is associated with the assembly of enzymes of DNA synthesis into replitase complexes that can be isolated by biochemical fractionation of nuclear lysate [29,30]. We tested whether the entry of LNCaP cells into S phase involves AR interaction with the enzymes of DNA synthesis in replitase complexes. We have shown previously that AR co-sediments with DNA polymerase activity in the replitase fraction isolated from exponentially growing LNCaP cells [20]. We now report that other enzymes of DNA synthesis, viz., PCNA and ribonucleotide reductase, and cell cycle regulatory proteins, viz., cyclin A, cyclin E and p27^{Kip-1}, also co-sediment with AR (Fig. 7). Importantly, this co-sedimentation was seen in nuclear lysate prepared from cells that were in S phase (20 hours after release from isoleucine-block), but not G₁ phase (1 hour after release from isoleucine block) (Fig. 7). Thus, there is an S phase-specific association of AR with enzymes of DNA synthesis in a replitase complex fraction.

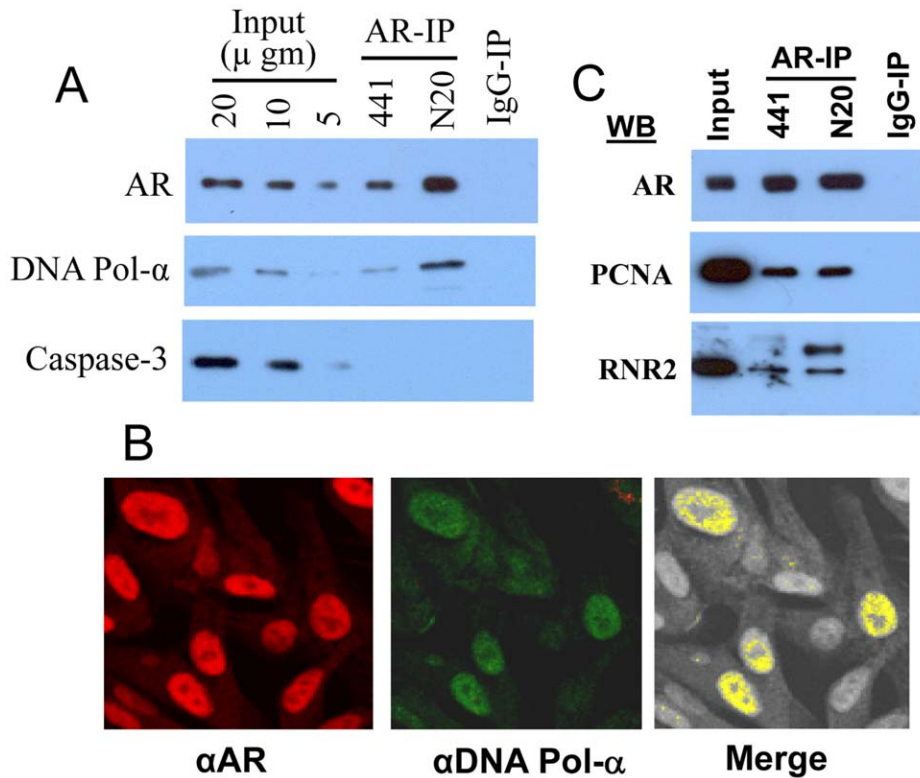


Figure 6. AR interacts with enzymes of DNA synthesis: A) AR-IP contains DNA polymerase- α . AR-IP prepared from exponentially growing LNCaP cells by using anti-AR mouse monoclonal (441) or rabbit polyclonal (N-20) antibodies was subjected to Western blot analysis. **B)** AR is colocalized with DNA polymerase- α in LNCaP cells. Exponentially growing LNCaP cells on slides were fixed and stained with anti-AR (N-20) rabbit polyclonal and anti-DNA polymerase- α (STK1) mouse monoclonal antibodies and confocal microscopy was performed. **C)** AR-IP contains PCNA and ribonucleotide reductase. AR-IP prepared from exponentially growing LNCaP cells was subjected to Western blot analysis. RNR2, ribonucleotide reductase catalytic subunit.
doi:10.1371/journal.pone.0056692.g006

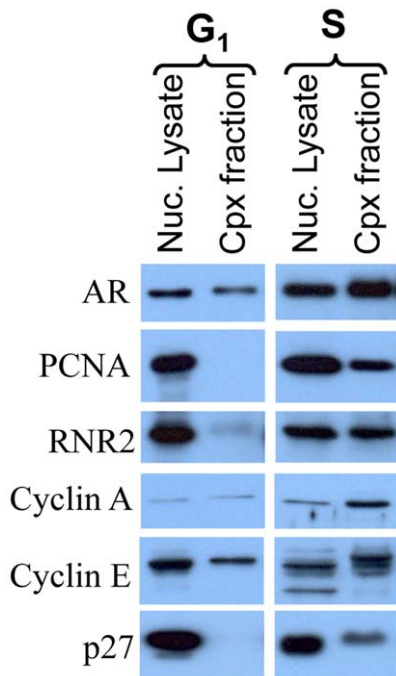


Figure 7. Differential association of AR with cell cycle regulatory proteins and enzymes of DNA synthesis in replisome complex from synchronized LNCaP cells in G₁ vs. S phase: LNCaP cells were synchronized by isoleucine-deprivation and replisome complex (Cpx) fraction was prepared from the nuclear lysate of cells in G₁ phase (1 hour after release from isoleucine-block) or S phase (20 hours after release from isoleucine-block). Equal amounts of protein were subjected to Western blot analysis. RNR2, ribonucleotide reductase (RNR2).

doi:10.1371/journal.pone.0056692.g007

Discussion

The ability of cells to enter S phase is determined by events in G₁ phase. While a role of AR in the control of proliferation of prostate cancer cells is evident from a number of studies that knocked down AR in androgen-sensitive and castration-resistant prostate cancer cells [8,9,10,11,12], the mechanism by which this occurs remains elusive. Our studies demonstrate for the first time that AR is required in mid-G₁ phase for synchronized LNCaP cells to progress from G₁ to S phase and that AR interacts with cell cycle regulatory proteins and enzymes required for initiation of DNA synthesis. While these observations remain to be validated in other AR-positive prostate cancer cell lines, the data presented here suggest AR involvement in proliferation of LNCaP cells through its interaction with components of the pre-RC necessary for the initiation of DNA synthesis and, therefore, for the progression of cells from G₁ to S phase.

We observed that the anti-proliferative effect of Casodex is quite evident in LNCaP cells that were treated with Casodex specifically during mid-G₁ phase but not in those that had already entered S phase (Fig. 2). Interestingly, this is consistent with an earlier report in which cyproterone acetate, another AR antagonist, blocks testosterone-stimulated DNA synthesis in the prostate gland of castrated rat when administered with testosterone but not if cyproterone acetate is delayed until DNA synthesis has already started [33].

Our observations suggest a role of AR in events leading up to the transition of cells from G₁ to S phase. Pre-RC assembly is one such event that occurs during that period and is necessary for the

initiation of DNA synthesis and, therefore, for the progression of cells from G₁ to S phase [16]. We observed that AR co-immunoprecipitates with Cdc6, a critical component of pre-RC (Fig. 3). There are other pre-RC components, such as Orc2, Cdt1, and Mcm7, that are also reported to be associated with AR in prostate cancer cells [34,35]. Interestingly, Cdc6 association with AR-IP was abrogated in cells treated with Casodex (Fig. 4), indicating a critical role of AR-Cdc6 interaction in progression of LNCaP cells from G₁ to S phase. Progression of cells from G₁ to S phase requires not only pre-RC assembly but also the recruitment of enzymes of DNA synthesis to pre-RC. DNA synthesis requires the concerted action of a number of enzymes and proteins in megacomplexes, which are referred to as DNA replication machinery, DNA synthesome or replisome [36,37,38]. Pre-RC serves as a “launching pad” for the assembly of DNA replication machinery at sites of DNA replication [16]. Our studies revealed AR association with DNA replication machinery specifically in cells that entered S phase, but not in those that were in G₁ phase (Fig. 7). AR integration into DNA replication machinery is also supported by the observation that AR is localized at sites of DNA replication [39]. Thus, AR integration into replication machinery through its interaction with the components of pre-RC as depicted in Fig. 8, may allow AR to exert control over proliferation of prostate cancer cells.

Based on the critical role of AR interaction with Cdc6 in cell cycle progression, which is indicated from the observation that Casodex disrupts AR interaction with Cdc6 (Fig. 4) and inhibits the progression of cells from G₁ to S phase (Fig. 2), we propose that AR plays a direct role in proliferation, independent of its role in regulating the expression of genes required for proliferation. In addition, whereas a 4-hour Casodex treatment was sufficient to block G₁ phase cells from entering S phase (Fig. 2), a similar 4-hour treatment with Casodex had no noticeable effect on AR transcriptional activity, as determined by PSA mRNA expression, in LNCaP cells (data not shown). Thus, the Casodex-sensitive role of AR in progression of cells from G₁ to S phase, i.e., proliferation, seems to be independent of its role as a transcription factor. The AR indeed has been shown to exhibit a critical function in proliferation of prostate cancer cells that is distinct from its function as a transcription factor; in CWR22R3 cells, the AR role in proliferation, but not its role as a transcription factor, is androgen-independent [11]. Similarly, Sathya et al [40] showed that the regulation of AR transcriptional activity and the role of AR in proliferation are mechanistically distinct; they developed tissue-specific AR modulators (SARMs) that are very weak as activators of AR transcriptional activity but are as effective as dihydrotestosterone (DHT) in stimulating the proliferation of prostate cancer cells.

Since cells that lack AR can progress flawlessly through the entire cell cycle, it seems remarkable that AR would integrate into the replication machinery to regulate proliferation of AR-positive prostate cancer cells. Interestingly, AR is not the only transcription factor that exerts control over proliferation through integration into the replication machinery. E2F-1 and Rb protein, both of which regulate the expression of genes necessary for cell cycle progression and DNA replication [41,42], also function at replication origins to limit DNA replication by interacting with proteins of the ORC, not by acting as transcription factors [43,44]. Conversely, proteins involved in the assembly of pre-RC, viz., Mcm proteins 2–7, colocalize with RNA polymerase II on actively transcribing genes and are required for transcription elongation [45]. These interactions between transcription factors and proteins involved in the assembly of pre-RC may facilitate the orderly replication of transcriptionally active regions of genomic DNA in S

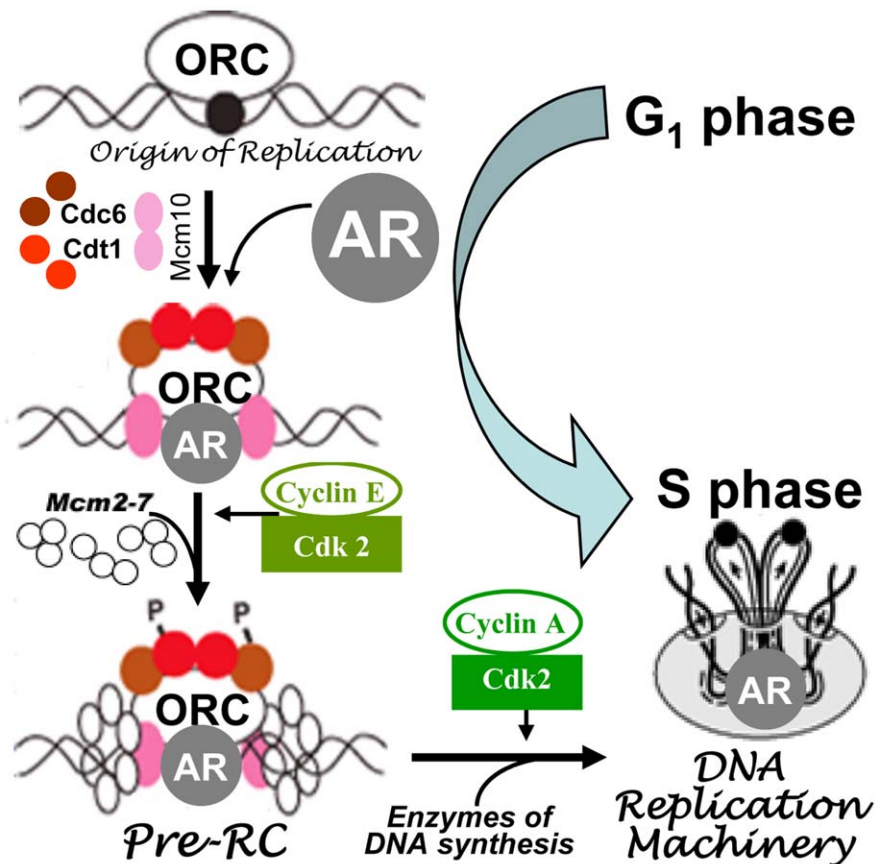


Figure 8. Model of AR interaction with pre-RC and replication machinery as cells progress from G₁ to S phase. Pre-RC assembly involves sequential recruitment of Cdc6, Cdt1, and mini-chromosome maintenance (Mcm) proteins to the origin recognition complex (ORC), which serves as a “launching pad” for the assembly of DNA replication complexes/machinery at the origin of DNA replication. Cyclin-dependent kinases, such as Dbf4-Cdc7 kinase (not shown), cyclin E-Cdk-2 and cyclin A-Cdk-2, play a role in the recruitment of Mcm proteins and enzymes of DNA synthesis to form DNA replication machinery as cells progress from G₁ to S phase. AR integrates into DNA replication machinery through its interaction with pre-RC components. Events occurring at one of the many origins of DNA replication that exist in a proliferating cell are depicted. doi:10.1371/journal.pone.0056692.g008

phase. Interestingly, the timing of initiation of replication in a genomic region is dictated by the transcriptional activity in that region [46,47]; transcriptionally active regions are known to replicate early in S phase, whereas transcriptionally inactive regions replicate late in S phase [48,49]. Furthermore, origins of DNA replication are enriched around transcription start sites and transcription initiation is reported to influence the initiation of DNA replication [50,51]. Thus, there is a cross-talk between transcription and replication, which may be facilitated by the interactions between proteins involved in DNA replication and transcription. Therefore, we propose that AR associated with proteins and enzymes of pre-RC and replication machinery may play a role in coordinating the replication of transcriptionally active AR-target genes during S phase.

In summary, AR may exert control over proliferation of prostate cancer cells through its interaction with pre-RC and DNA replication machinery. Future studies focusing on identification of protein(s) that interface with AR in pre-RC may lead to the development of new and more effective strategies to suppress AR-

dependent growth of prostate cancer. In addition, altered interaction of AR with pre-RC and replication machinery could circumvent the requirement for androgen and account for the continued critical role of AR in proliferation of castration-resistant prostate cancer cells. Therefore, analysis of pre-RC and replication machinery constituents in androgen-sensitive vs. castration-resistant prostate cancer cells may yield valuable information about the mechanism of AR action in prostate cancer cell proliferation and may lead to the identification of potentially more effective therapeutic targets for prostate cancer treatment.

Acknowledgments

We thank Kannagi Chinnakannu and Richard Croxen for expert technical assistance.

Author Contributions

Conceived and designed the experiments: GPR. Performed the experiments: SM MW VUB S-HK ZH. Wrote the paper: GPR ERB MM.

References

1. Siegel R, Naishadham D, Jemal A (2012) Cancer statistics, 2012. *CA Cancer J Clin* 62: 10–29.
2. Huggins C, Hodges CV (2002) Studies on prostatic cancer. I. The effect of castration, of estrogen and of androgen injection on serum phosphatases in metastatic carcinoma of the prostate. 1941. *J Urol* 167: 948–951; discussion 952.

3. Feldman BJ, Feldman D (2001) The development of androgen-independent prostate cancer. *Nat Rev Cancer* 1: 34–45.
4. Pienta KJ, Bradley D (2006) Mechanisms underlying the development of androgen-independent prostate cancer. *Clin Cancer Res* 12: 1665–1671.
5. Chen CD, Welsbie DS, Tran C, Baek SH, Chen R, et al. (2004) Molecular determinants of resistance to antiandrogen therapy. *Nat Med* 10: 33–39.
6. Shah RB, Mehra R, Chinaiyan AM, Shen R, Ghosh D, et al. (2004) Androgen-independent prostate cancer is a heterogeneous group of diseases: lessons from a rapid autopsy program. *Cancer Res* 64: 9209–9216.
7. Ricciardelli C, Choong CS, Buchanan G, Vivekanandan S, Neufing P, et al. (2005) Androgen receptor levels in prostate cancer epithelial and peritumoral stromal cells identify non-organ confined disease. *Prostate* 63: 19–28.
8. Compagno D, Merle C, Morin A, Gilbert C, Mathieu JR, et al. (2007) siRNA-directed in vivo silencing of androgen receptor inhibits the growth of castration-resistant prostate carcinomas. *PLoS One* 2: e1006.
9. Haag P, Bektic J, Bartsch G, Klocker H, Eder IE (2005) Androgen receptor down regulation by small interference RNA induces cell growth inhibition in androgen sensitive as well as in androgen independent prostate cancer cells. *J Steroid Biochem Mol Biol* 96: 251–258.
10. Snock R, Cheng H, Margiotti K, Wafa LA, Wong CA, et al. (2009) In vivo knockdown of the androgen receptor results in growth inhibition and regression of well-established, castration-resistant prostate tumors. *Clin Cancer Res* 15: 39–47.
11. Yuan X, Li T, Wang H, Zhang T, Barua M, et al. (2006) Androgen receptor remains critical for cell-cycle progression in androgen-independent CWR22 prostate cancer cells. *Am J Pathol* 169: 682–696.
12. Eder IE, Culig Z, Ramoner R, Thurnher M, Putz T, et al. (2000) Inhibition of LNCaP prostate cancer cells by means of androgen receptor antisense oligonucleotides. *Cancer Gene Ther* 7: 997–1007.
13. Zegarra-Moro OL, Schmidt IJ, Huang H, Tindall DJ (2002) Disruption of androgen receptor function inhibits proliferation of androgen-refractory prostate cancer cells. *Cancer Res* 62: 1008–1013.
14. Bai VU, Cifuentes E, Menon M, Barrack ER, Reddy GP (2005) Androgen receptor regulates Cdc6 in synchronized LNCaP cells progressing from G1 to S phase. *J Cell Physiol* 204: 381–387.
15. Cifuentes E, Croxen R, Menon M, Barrack ER, Reddy GP (2003) Synchronized prostate cancer cells for studying androgen regulated events in cell cycle progression from G1 into S phase. *J Cell Physiol* 195: 337–345.
16. Reddy GP, Cifuentes E, Bai U, Menon M, Barrack ER (2004) Onset of DNA synthesis and S phase. In: Stein GS, Pardee AB, editors. *Cell Cycle and Growth Control: Biological Regulation and Cancer*. Second Edition ed: John Wiley & Sons, Inc. 149–200.
17. Bai VU, Hwang O, Divine GW, Barrack ER, Menon M, et al. (2012) Averaged differential expression for the discovery of biomarkers in the blood of patients with prostate cancer. *PLoS One* 7: e34875.
18. Subramanyam C, Honn SC, Reed WC, Reddy GP (1990) Nuclear localization of 68 kDa calmodulin-binding protein is associated with the onset of DNA replication. *J Cell Physiol* 144: 423–428.
19. Reddy GPV, Pardee AB (1980) Multienzyme complex for metabolic channeling in mammalian DNA replication. *Proc Natl Acad Sci U S A* 77: 3312–3316.
20. Murthy S, Reddy GP (2006) Replisome: complete machinery for DNA synthesis. *J Cell Physiol* 209: 711–717.
21. Koochekpour S, Lee TJ, Wang R, Culig Z, Delorme N, et al. (2007) Prosaposin upregulates AR and PSA expression and activity in prostate cancer cells (LNCaP). *Prostate* 67: 178–189.
22. Arnold JT, Liu X, Allen JD, Le H, McFann KK, et al. (2007) Androgen receptor or estrogen receptor-beta blockade alters DHEA-, DHT-, and E(2)-induced proliferation and PSA production in human prostate cancer cells. *Prostate* 67: 1152–1162.
23. Riegman PH, Vlietstra RJ, van der Korput JA, Brinkmann AO, Trapman J (1991) The promoter of the prostate-specific antigen gene contains a functional androgen responsive element. *Mol Endocrinol* 5: 1921–1930.
24. Lee EC, Zhan P, Schallhorn R, Packman K, Tenniswood M (2003) Antiandrogen-induced cell death in LNCaP human prostate cancer cells. *Cell Death Differ* 10: 761–771.
25. Quero L, Giocanti N, Hennequin C, Favaudon V (2010) Antagonistic interaction between bicalutamide (Casodex) and radiation in androgen-positive prostate cancer LNCaP cells. *Prostate* 70: 401–411.
26. Zhan P, Lee EC, Packman K, Tenniswood M (2002) Induction of invasive phenotype by Casodex in hormone-sensitive prostate cancer cells. *J Steroid Biochem Mol Biol* 83: 101–111.
27. Cifuentes E, Mataraza JM, Yoshida BA, Menon M, Sacks DB, et al. (2004) Physical and functional interaction of androgen receptor with calmodulin in prostate cancer cells. *Proc Natl Acad Sci U S A* 101: 464–469.
28. Jaumot M, Grana X, Giordano A, Reddy PV, Agell N, et al. (1994) Cyclin/cdk2 complexes in the nucleus of HeLa cells. *Biochem Biophys Res Commun* 203: 1527–1534.
29. Noguchi H, Prem veer Reddy G, Pardee AB (1983) Rapid incorporation of label from ribonucleoside diphosphates into DNA by a cell-free high molecular weight fraction from animal cell nuclei. *Cell* 32: 443–451.
30. Reddy GP, Pardee AB (1980) Multienzyme complex for metabolic channeling in mammalian DNA replication. *Proc Natl Acad Sci U S A* 77: 3312–3316.
31. Jin F, Fondell JD (2009) A novel androgen receptor-binding element modulates Cdc6 transcription in prostate cancer cells during cell-cycle progression. *Nucleic Acids Res* 37: 4826–4838.
32. Liao X, Tang S, Thrasher JB, Griebing TL, Li B (2005) Small-interfering RNA-induced androgen receptor silencing leads to apoptotic cell death in prostate cancer. *Mol Cancer Ther* 4: 505–515.
33. Carter MF, Chung LWK, Coffey DS (1972) The temporal requirements for androgens during the cell cycle of the prostate gland. In: King LR, Murphy GP, editors. *Festschrift Urological Research*. New York: Plenum Publishers. 27–33.
34. D'Antonio JM, Vander Griend DJ, Isaacs JT (2009) DNA licensing as a novel androgen receptor mediated therapeutic target for prostate cancer. *Endocr Relat Cancer* 16: 325–332.
35. Shi YK, Yu YP, Zhu ZH, Han YC, Ren B, et al. (2008) MCM7 interacts with androgen receptor. *Am J Pathol* 173: 1758–1767.
36. Frouin I, Montecucco A, Spadari S, Maga G (2003) DNA replication: a complex matter. *EMBO Rep* 4: 666–670.
37. Dai H, Liu J, Malkas LH, Hickey RJ (2009) Characterization of RNA primers synthesized by the human breast cancer cell DNA synthesome. *J Cell Biochem* 106: 798–811.
38. Reddy GP, Fager RS (1993) Replisome: a complex integrating dNTP synthesis and DNA replication. *Crit Rev Eukaryot Gene Expr* 3: 255–277.
39. Sivanandam A, Murthy S, Kim SH, Barrack ER, Veer Reddy GP (2010) Role of androgen receptor in prostate cancer cell cycle regulation: interaction with cell cycle regulatory proteins and enzymes of DNA synthesis. *Curr Protein Pept Sci* 11: 451–458.
40. Sathya G, Chang CY, Kazmin D, Cook CE, McDonnell DP (2003) Pharmacological uncoupling of androgen receptor-mediated prostate cancer cell proliferation and prostate-specific antigen secretion. *Cancer Res* 63: 8029–8036.
41. DeGregori J, Kowalik T, Nevins JR (1995) Cellular targets for activation by the E2F1 transcription factor include DNA synthesis- and G1/S-regulatory genes. *Mol Cell Biol* 15: 4215–4224.
42. Hateboer G, Wobst A, Petersen BO, Le Cam L, Vigo E, et al. (1998) Cell cycle-regulated expression of mammalian CDC6 is dependent on E2F. *Mol Cell Biol* 18: 6679–6697.
43. Bosco G, Du W, Orr-Weaver TL (2001) DNA replication control through interaction of E2F-RB and the origin recognition complex. *Nat Cell Biol* 3: 289–295.
44. Mendoza-Maldonado R, Paolinelli R, Galbati L, Giadrossi S, Giacca M (2010) Interaction of the retinoblastoma protein with Orc1 and its recruitment to human origins of DNA replication. *PLoS One* 5: e13720.
45. Snyder M, Huang XY, Zhang JJ (2009) The minichromosome maintenance proteins 2–7 (MCM2–7) are necessary for RNA polymerase II (Pol II)-mediated transcription. *J Biol Chem* 284: 13466–13472.
46. Gilbert DM (2002) Replication timing and transcriptional control: beyond cause and effect. *Curr Opin Cell Biol* 14: 377–383.
47. Schwaiger M, Schubeler D (2006) A question of timing: emerging links between transcription and replication. *Curr Opin Genet Dev* 16: 177–183.
48. Holmquist G, Gray M, Porter T, Jordan J (1982) Characterization of Giemsa dark- and light-band DNA. *Cell* 31: 121–129.
49. Yunis JJ, Kuo MT, Saunders GF (1977) Localization of sequences specifying messenger RNA to light-staining G-bands of human chromosomes. *Chromosoma* 61: 335–344.
50. Karnani N, Taylor CM, Malhotra A, Dutta A (2010) Genomic study of replication initiation in human chromosomes reveals the influence of transcription regulation and chromatin structure on origin selection. *Mol Biol Cell* 21: 393–404.
51. Sequeira-Mendes J, Diaz-Uriarte R, Apedaile A, Huntley D, Brockdorff N, et al. (2009) Transcription initiation activity sets replication origin efficiency in mammalian cells. *PLoS Genet* 5: e1000446.