

ARTICLE

Open Access

MeCP2 facilitates breast cancer growth via promoting ubiquitination-mediated P53 degradation by inhibiting RPL5/RPL11 transcription

DongDong Tong^{1,2}, Jing Zhang³, XiaoFei Wang², Qian Li^{1,2}, Li Ying Liu², Juan Yang^{1,2}, Bo Guo^{1,2}, Lei Ni¹, LingYu Zhao^{1,2} and Chen Huang^{1,2}

Abstract

Methyl-CpG-binding protein 2 (MeCP2) facilitates the carcinogenesis and progression of several types of cancer. However, its role in breast cancer and the relevant molecular mechanism remain largely unclear. In this study, analysis of the Cancer Genome Atlas (TCGA) data that MeCP2 expression was significantly upregulated in breast cancer tissues, and high MeCP2 expression was correlated with poor overall survival. Knockdown of MeCP2 inhibited breast cancer cell proliferation and G1–S cell cycle transition and migration as well as induced cell apoptosis in vitro. Moreover, MeCP2 knockdown suppressed cancer cell growth in vivo. Investigation of the molecular mechanism showed that MeCP2 repressed RPL11 and RPL5 transcription by binding to their promoter regions. TCGA data revealed significantly lower RPL11 and RPL5 expression in breast cancer tissues; additionally, overexpression of RPL11/RPL5 significantly suppressed breast cancer cell proliferation and G1–S cell cycle transition and induced apoptosis in vitro. Furthermore, RPL11 and RPL5 suppressed ubiquitination-mediated P53 degradation through direct binding to MDM2. This study demonstrates that MeCP2 promotes breast cancer cell proliferation and inhibits apoptosis through suppressing RPL11 and RPL5 transcription by binding to their promoter regions.

Introduction

Breast cancer is a major malignant tumor and the leading cause of cancer-related death among women worldwide^{1,2}. Many patients may experience metastasis, with cancer cells spreading to the lungs, brain, liver, bone marrow, and lymph nodes³. Improvements in diagnostic accuracy and the development of antitumor drugs have dramatically decreased breast cancer mortality. Nevertheless, satisfactory therapeutic effects have yet to be

achieved because it is an extremely complex disease. This complexity hampers the exploration of mechanisms underlying carcinogenesis and cancer progression, which are multistep processes involving many oncogenes and anti-oncogenes⁴. Some studies have shown that abnormal transcriptional activities of oncogenes and tumor suppressor genes are involved in breast cancer tumorigenesis⁵. Therefore, understanding the transcriptional regulation of cancer-related genes is crucial for breast cancer diagnosis and treatment.

Methyl-CpG-binding protein 2 (MeCP2), an important member of the methyl-CpG-binding domain (MBD) family, includes two main domains: an MBD and a transcriptional repression domain (TRD)⁶. MeCP2 is an X-linked gene whose mutation leads to multiple phenotypes that fall under the umbrella of Rett syndrome. As a crucial epigenetic regulator, MeCP2 regulates chromatin organization and gene transcription by binding to the

Correspondence: LingYu Zhao (zhaolingyu@xjtu.edu.cn) or Chen Huang (hchen@xjtu.edu.cn)

¹Department of Cell Biology and Genetics/Key Laboratory of Environment and Genes Related to Diseases, School of Basic Medical Sciences, Xi'an Jiaotong University Health Science Center, Xi'an, Shaanxi 710061, China

²Institute of Genetics and Developmental Biology, Translational Medicine Institute, School of Basic Medical Sciences, Xi'an Jiaotong University Health Science Center, Xi'an, Shaanxi 710061, China

Full list of author information is available at the end of the article
These authors contributed equally: DongDong Tong, Jing Zhang

© The Author(s) 2020



Open Access This article is licensed under a Creative Commons Attribution 4.0 International License, which permits use, sharing, adaptation, distribution and reproduction in any medium or format, as long as you give appropriate credit to the original author(s) and the source, provide a link to the Creative Commons license, and indicate if changes were made. The images or other third party material in this article are included in the article's Creative Commons license, unless indicated otherwise in a credit line to the material. If material is not included in the article's Creative Commons license and your intended use is not permitted by statutory regulation or exceeds the permitted use, you will need to obtain permission directly from the copyright holder. To view a copy of this license, visit <http://creativecommons.org/licenses/by/4.0/>.

methylated DNA sites of gene promoter regions^{7–9}. It acts not only as a transcriptional repressor by selectively binding methylated CpG dinucleotides and recruiting co-repressors, such as histone deacetylases and Sin3A, but also as a transcriptional activator by selectively binding methylated CpG islands and recruiting activators, such as CREB1¹⁰. MeCP2 is reported as a frequently amplified oncogene in several cancer types, such as colorectal, lung, cervical, breast, and uterine cancers¹¹. In a previous study, MeCP2 was upregulated in breast cancer and bound to hypermethylated tumor suppressors, which indicated that MeCP2 acted as an oncogene during breast cancer proliferation^{12–15}. As revealed in our previous studies, MeCP2 facilitates gastric cancer cell proliferation and inhibits cell apoptosis through suppressing FOXF1/MYOD1 transcription and promoting GIT1 transcription by binding the methylated CpG islands of their promoter regions^{16,17}. Given the existing studies, the role of MeCP2 in breast cancer has not been precisely examined. In particular, the molecular mechanism by which MeCP2 promotes tumor proliferation remains unclear.

In the present study, we investigated the role and molecular mechanism of MeCP2 in breast cancer proliferation. By analyzing the Cancer Genome Atlas (TCGA) data, we found that MeCP2 expression was significantly upregulated in breast cancer, and its expression level was correlated with the clinicopathological features. MeCP2 facilitated breast cancer cell proliferation and inhibited cell apoptosis through suppressing RPL11 and RPL5 expression by binding to their promoter regions, thereby promoting ubiquitination-mediated P53 degradation. Our findings suggest that MeCP2 may be a novel therapeutic target for breast cancer treatment.

Results

MeCP2 was upregulated in breast cancer and promoted cell proliferation and migration in vitro

To investigate the possible driving mechanism of breast cancer, we evaluated the MeCP2-related enrichment pathways by gene set enrichment analysis (GSEA) and found that the cancer-related pathway was significantly positively related to MeCP2 (Fig. 1a). Principal component analysis indicated that the expression of genes involved in this pathway differed between normal and breast cancer tissues (Supplementary Fig. S1A, B). TCGA data showed that MeCP2 expression was significantly higher in breast cancer tissues ($n = 1099$) than in normal breast tissues ($n = 113$) (Fig. 1b), and high MeCP2 expression was associated with M stage (Fig. 1c). Concordantly, statistical analysis showed that patients with higher MeCP2 expression had poorer overall survival (Fig. 1d). To further investigate the biological effect of MeCP2 on breast cancer in vitro, we used siRNAs to silence endogenous MeCP2 expression in breast cancer cell lines MCF7 and ZR-75-1.

The qRT-PCR and western blotting results showed that MeCP2 siRNAs significantly downregulated MeCP2 expression at both mRNA and protein levels in these cells (Supplementary Fig. S2A, B and Fig. 1k). These results, along with cell viability and colony formation assays, revealed that silencing MeCP2 significantly inhibited breast cancer cell proliferation (Fig. 1e, f). MeCP2 siRNAs also increased early and late apoptotic cells (Fig. 1g) and induced G1 cell-cycle arrest (Fig. 1h). Furthermore, silencing MeCP2 remarkably suppressed MCF7 and ZR-75-1 cell migration (Fig. 1i, j). The levels of β -catenin, Bcl2, and CDK2 decreased in breast cancer cells treated with MeCP2 siRNAs compared to those with control siRNA, whereas the expression levels of Bax, P21, and P53 increased (Fig. 1k).

MeCP2 inhibited RPL11 and RPL5 transcription by binding to their promoters

Enrichment pathway analysis showed that MeCP2 could significantly inhibit ribosome-mediated biological pathways and regulate ubiquitin-mediated pathways (Fig. 2a and Supplementary Fig. S3A, B). Additionally, our analysis of the specified ribosomal proteins (RPs), which were demonstrated in the [BioGRID database](#) as MDM2-P53 pathway mediators or as interacting with MDM2¹⁸, revealed that MeCP2 expression was correlated with RP expression, including RPL36A, RPS23, RPL15, RPS11, RPL23A, RPL4, RPL14, RPL11, RPL5, RPS6, RPL26, and RPL23 (Fig. 2b, g). TCGA data showed that high levels of these RPs were associated with high survival probability in breast cancer patients (Fig. 2c, 3b), and excepted RPL36A, their expression levels were suppressed (Fig. 2d, 3a). Analysis of six RPs that are major inhibitors of P53 ubiquitination, including RPL11, RPL5, RPL23A, RPS6, RPS11, and RPL26, showed that as the ratio of MeCP2 to RP increased, survival probability decreased (Supplementary Fig. S3C). To verify these findings, we treated MCF7 and ZR-75-1 cells with the methylation inhibitor 5-aza-2'-deoxycytidine (5-Aza) and found that 5-Aza at concentrations of 5, 10, 50 μ m dramatically upregulated the mRNA expression of the six RPs in the cells (Fig. 2e). Meanwhile, silencing MeCP2 remarkably increased the mRNA levels of these RPs (Fig. 2f).

We further examined the protein expression of RPL5 and RPL11 in MCF7 and ZR-75-1 cells and found that they were significantly upregulated after transfection with MeCP2 siRNAs (Fig. 2h). Chromatin immunoprecipitation (ChIP)-PCR assay revealed that MeCP2 bound to the promoters of RPL11/RPL5 in the cells (Fig. 2i). We constructed GFP-MeCP2 plasmids, including MeCP2-WT, MeCP2 Δ MDB, MeCP2 Δ TRD, and MeCP2 Δ TRD+NLS, which were transfected into cancer cells. Immunofluorescence and western blotting assays confirmed successful plasmid expression in MCF7 cells (Supplementary Fig. S3D and Fig. 2j, k). ChIP-PCR assay revealed that

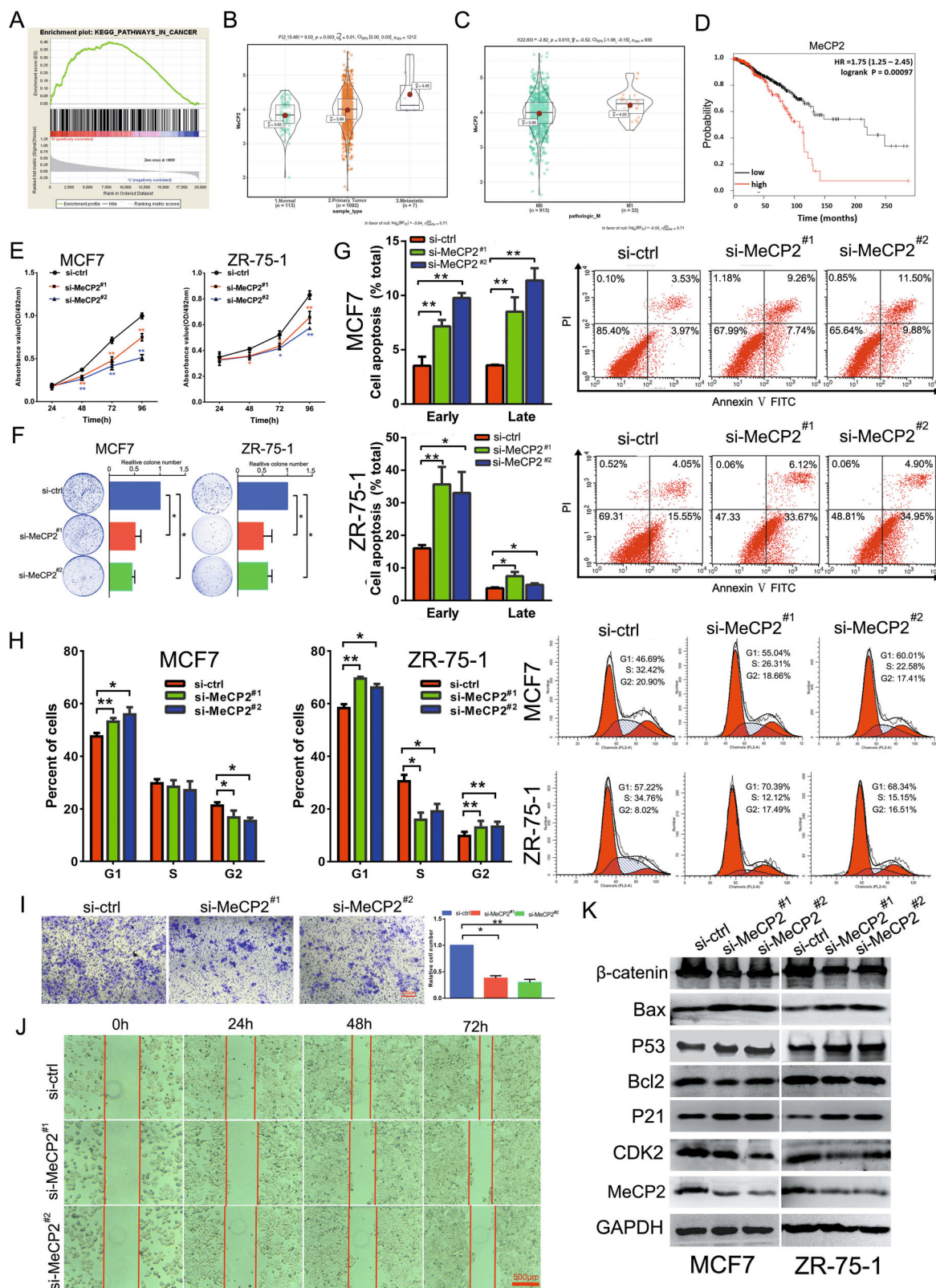


Fig. 1 (See legend on next page.)

(see figure on previous page)

Fig. 1 MeCP2 is upregulated in breast cancer tissues and promotes cancer proliferation. **a** GSEA of MeCP2 in breast cancer based on TCGA data. The results showed significant enrichment of the gene set involving the cancer-related signaling. **b** Bioinformatics analysis of MeCP2 expression in breast cancer and para-carcinoma tissues based on TCGA data. $P < 0.01$. **c** MeCP2 expression in M0 stage and M1 stage breast cancer based on TCGA data. $P < 0.05$. **d** Kaplan–Meier curves of breast cancer survival by MeCP2 expression based on TCGA data. **e** MTT assay of cell proliferation by 24, 48, 72 and 96 h after transfection with MeCP2 siRNA. $*P < 0.05$, $**P < 0.01$. **f** Colony formation assay 14 days after transfection. $*P < 0.05$. **g** Cell apoptosis by flow cytometry, visualized using Annexin-V/PI staining. $*P < 0.05$, $**P < 0.01$. **h** Flow cytometry of cell cycle, visualized by PI staining. $*P < 0.05$, $**P < 0.01$. **i** Transwell assay of the effect of silencing MeCP2 on MCF7 cell migration. $*P < 0.05$, $**P < 0.01$. **j** Wound-healing assay of the effect of silencing MeCP2 on MCF7 cell migration. **k** Western blotting of the expressions of β -catenin, Bcl2, P53, Bax, CDK2, P21, and MeCP2 in MCF7 and ZR-75-1 cells after transfection with MeCP2 siRNAs.

MeCP2-WT and MeCP2 Δ TRD+NLS could capture target sequences of the promoter regions of RPL11 and RPL5 (Fig. 21 and Supplementary Fig. S3E). TCGA data analysis indicated that the methylation levels of the CpG sites in the promoter region of either RPL11 or RPL5 were negatively correlated with their respective expression (Supplementary Fig. S3F). These results suggested that MeCP2 repressed RPL11 and RPL5 expression by binding to their promoters.

RPL11 and RPL5 suppressed breast cancer cell growth and induced cell apoptosis

To further explore the biological effect of RPL11 and RPL5 in breast cancer, we analyzed their expression using TCGA data. It was found that both RPL11 and RPL5 expression levels were significantly lower in breast cancer tissues ($n = 1099$) than in normal breast tissues ($n = 113$) (Fig. 3a). Consistently, patients with higher RPL11 and RPL5 expression had longer overall survival (Fig. 3b).

We constructed RPL11- and RPL5-overexpressing plasmids, transfected them into MCF7 and ZR-75-1 cells, and confirmed plasmid expression of RPL11 and RPL5 in these cells by western blotting and Immunofluorescence assay (Fig. 3c, d). Furthermore, Results showed that Bcl2 and CDK2 levels decreased in the RPL11/RPL5-overexpressing breast cancer cells, whereas the expression of Bax, P21, and P53 increased in MCF7 and ZR-75-1 cells. Overexpression of RPL11/RPL5 significantly suppressed MCF7 and ZR-75-1 cell proliferation, as evidenced by both cell viability and colony formation assays (Fig. 3e, f). This overexpression also induced G1 cell-cycle arrest (Fig. 3g). Overexpression of RPL11 and RPL5 increased early apoptotic cells in both ZR-75-1 and MCF7 cells, RPL11 induced late apoptotic in MCF7 cells, and RPL5 facilitated late apoptotic in ZR-75-1 cells (Fig. 3h). These findings suggested that RPL11 and RPL5 could inhibit breast cancer cell proliferation and induce apoptosis.

RPL5 and RPL11 delay P53 ubiquitination in breast cancer cells by binding MDM2

It has been reported that RPL5 and RPL11 act as P53 activators by partially abolishing the E3 ubiquitin ligase

activity of MDM2 in some tumors. In this study, we aimed to determine whether RPL5 and RPL11 might regulate P53 activity by overcoming MDM2 inhibition in breast cancer. We tested whether RPL5/RPL11 could bind to MDM2 using a set of co-immunoprecipitation-immunoblot assays. Binding assay was also performed after transfecting MCF7 and ZR-75-1 cells with FLAG-tagged plasmids expressing RPL11 and RPL5. It was found that MDM2 was co-immunoprecipitated with RPL11 and RPL5 (Fig. 4a). P53 ubiquitination was observed in MCF7 and ZR-75-1 cells, which decreased after FLAG-tagged plasmid transfection (Fig. 4b, c). Confocal laser scanning microscopy confirmed the co-localization of RPL11/RPL5 and MDM2 in MCF7 and ZR-75-1 cells after transfection with the RPL11 and RPL5 overexpression vectors (Fig. 4d). To verify that RPL5 and RPL11 promote P53 stability, we treated the breast cancer cells with cycloheximide after transfection with the RPL11/RPL5 overexpression or control vectors. The results showed that the half-life of P53 in cells transfected with RPL11 or RPL5 overexpression vector was prolonged compared with control vector-transfected cells, indicating that RPL11 and RPL5 could inhibit P53 degradation (Fig. 4e). Moreover, P53 protein expression in cells transfected with MeCP2 siRNAs was higher than in those with control siRNA (Fig. 4f). We also treated cancer cells with proteasome inhibitor (MG-132) after transfection with MeCP2 overexpression vector and found that P53 protein expression was lower in such cells than in those transfected with the control vector (Fig. 4g). These results indicated that RPL11 and RPL5 could delay ubiquitination-mediated P53 degradation by directly binding to MDM2.

MeCP2 facilitated breast cancer cell growth via inducing P53 degradation by inhibiting RPL11/RPL5 expression

To further confirm that MeCP2 might promote breast cancer cell proliferation by suppressing RPL11/RPL5 expression and promoting the E3 ubiquitin ligase activity of MDM2, MeCP2 overexpression vector was co-transfected with RPL11 or RPL5 overexpression vectors or MDM2 inhibitor (Nutlin3) into MCF7 cells. Cell viability and colony formation assays showed that upregulation of MeCP2 expression promoted cell proliferation,

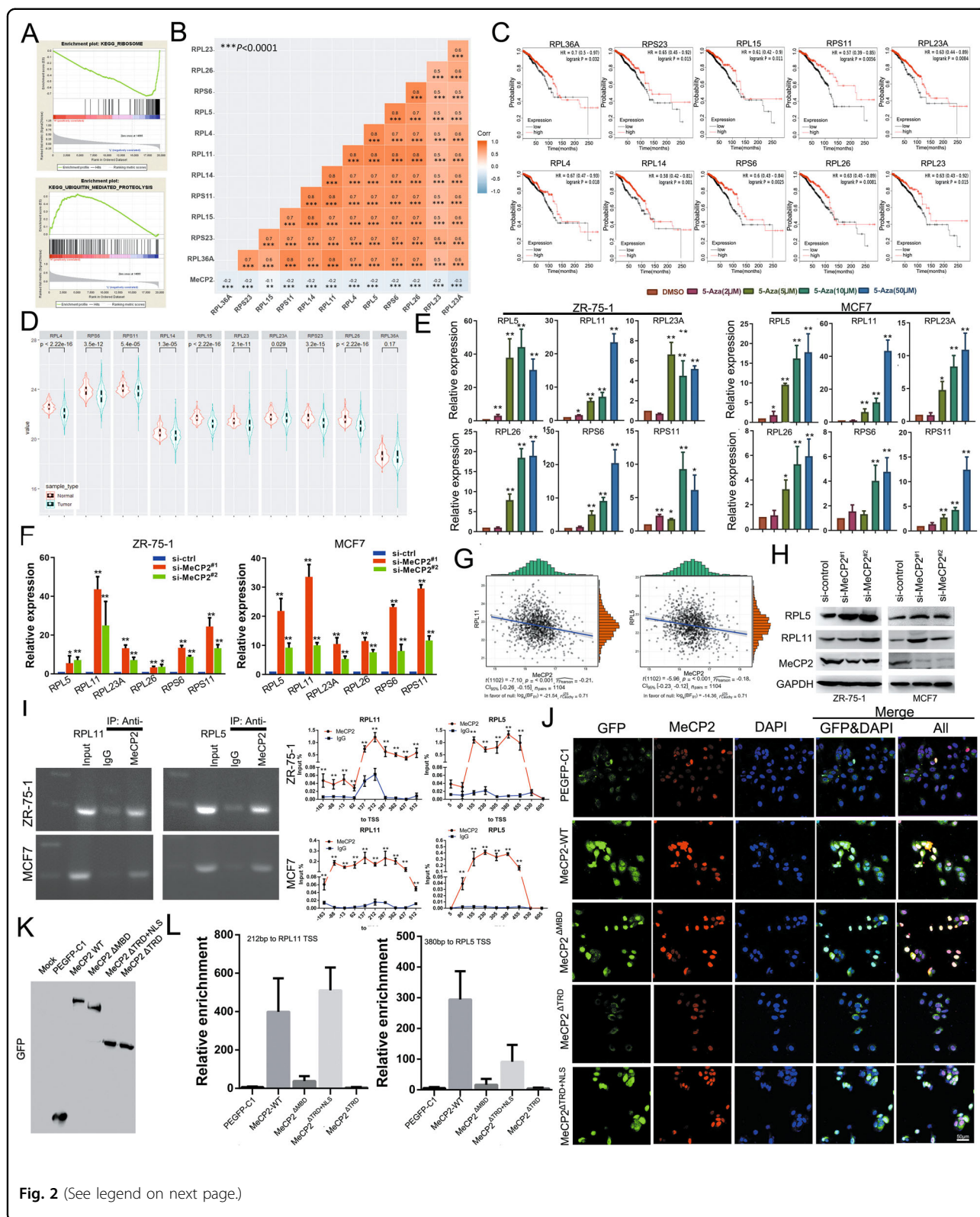


Fig. 2 (See legend on next page.)

(see figure on previous page)

Fig. 2 MeCP2 represses the expressions of RPL11 and RPL5 in breast cancer cells by binding to their promoter regions. **a** GSEA of MeCP2 in breast cancer based on TCGA data. The results showed significant enrichment of the gene set involving ribosome- and ubiquitin-mediated biological pathways. **b** Correlation between MeCP2 expression and the expressions of ribosomal proteins (RPs) in breast cancer. $***P < 0.001$. **c** Kaplan–Meier curves of breast cancer survival by related RPs. **d** Analysis of RP expressions in breast cancer and para-carcinoma tissues. **e** mRNA expressions of RPL5, RPL11, RPL23A, RPL26, RPS6 and RPS11 in ZR-75-1 and MCF7 cells treated with 5-Aza or dimethyl sulfoxide (DMSO). $*P < 0.05$, $***P < 0.01$. **f** mRNA levels of RPL5, RPL11, RPL23A, RPL26, RPS6 and RPS11 in ZR-75-1 and MCF7 cells transfected with MeCP2 siRNAs. $*P < 0.05$, $***P < 0.01$. **g** Correlation between MeCP2 expression and RPL11 or RPL5 expression in breast cancer based on TCGA data. **h** The protein expressions of RPL11 and RPL5 in MCF7 and ZR-75-1 cells transfected with MeCP2 siRNAs. **i** ChIP PCR gel electrophoresis analysis (left) and ChIP RT-PCR (right) of RPL11 and RPL5 with anti-MeCP2 antibody in MCF7 and ZR-75-1 cells. **j** Immunofluorescence of the expression of plasmids MeCP2-WT, MeCP2 Δ MBD, MeCP2 Δ TRD and MeCP2 Δ TRD+NLS in MCF7 cells. The nuclei were stained by DAPI. **k** Western blot of the expression of the plasmids in MCF7 cells. **l** ChIP-PCR assay for the target sequences of the promoters of RPL11 and RPL5, and simultaneous ChIP analysis of poly II A binding to GAPDH promoter as internal reference.

while overexpression of RPL11/RPL5 or Nutlin3 partially reversed this effect (Fig. 5a, b). G1-phase cells decreased significantly with MeCP2 overexpression and were restored by co-transfection of MeCP2 overexpression vector with RPL11/RPL5 overexpression vectors or Nutlin3 (Fig. 5c and Supplementary Fig. S4A–D). Furthermore, MeCP2 overexpression induced P53 ubiquitination and downregulated P53 protein expression, while overexpression of RPL11/RPL5 or Nutlin3 partially reversed these effects (Fig. 5d, e).

Next, we synthesized RPL11 and RPL5 siRNAs, which were co-transfected with MeCP2 siRNA into MCF7 cells. Cell viability and colony formation assays showed that downregulation of MeCP2 expression led to suppressed cell proliferation, which was rescued by silencing RPL11 or RPL5 (Fig. 5f, g). The apoptosis level was dramatically lower in cells co-transfected with MeCP2 siRNA and RPL11/RPL5 siRNAs than in those with MeCP2 siRNA alone (Fig. 5h). Cell cycle assay also showed that silencing MeCP2 induced a significant increase in G1-phase cells, while co-transfection with MeCP2 siRNA and RPL11/RPL5 siRNAs reversed this effect (Fig. 5i). Moreover, MeCP2 siRNA or Nutlin3 upregulated P53 protein expression, which was abrogated by RPL11 or RPL5 siRNAs (Fig. 5j). Altogether, these results confirmed that MeCP2 promoted breast cancer cell proliferation and inhibited cell apoptosis through promoting ubiquitination-mediated P53 degradation by suppressing RPL11 and RPL5 expression.

MeCP2 promoted breast cancer cell proliferation by regulating the RPL11/RPL5-P53 pathway in vivo

To further investigate the role of MeCP2 in breast cancer cell proliferation in vivo, we constructed an artificial shRNA lentiviral vector containing a selected MeCP2-targeting sequence (sh-MeCP2) and generated a stable MCF7 cell clone. Control-infected and sh-MeCP2-infected MCF7 cells were injected subcutaneously into both groin flanks of nude mice, and tumor growth was observed. It was found that the tumor growth, based on tumor weight and size, was significantly inhibited by sh-MeCP2 (Fig. 6a–c). MeCP2 mRNA expression was

markedly downregulated in the sh-MeCP2 group compared with that in the control group, while the mRNA expression levels of RPL11 and RPL5 were upregulated (Fig. 6d). In addition, the protein expression of MeCP2 decreased in the sh-MeCP2 xenografts while that of P53 increased (Fig. 6e, f and Supplementary Fig. S5). Furthermore, Bcl2 expression was downregulated in the sh-MeCP2 xenografts, whereas the levels of BAX, P21, RPL11, and RPL5 were upregulated (Fig. 6f). These data further verified that MeCP2 promoted breast cancer cell proliferation via regulating P53 degradation by inhibiting RPL11 and RPL5 expression in vivo.

Discussion

Accumulating evidence has indicated that MeCP2, as an important epigenetic regulator, may be a key oncogene in various cancer types^{11,12}. Reportedly, MeCP2 promotes colorectal cancer cell growth, regulates the carcinogenesis and growth of osteosarcoma and neuroblastoma, and facilitates oral squamous cell carcinoma proliferation^{19,20}. Silencing MeCP2 inhibits cell proliferation in transformed human prostate cells²¹. Our previous study demonstrated dramatically upregulated MeCP2 expression in gastric cancer, which facilitates cancer cell proliferation and suppresses cell apoptosis in vitro and in vivo^{16,17}. The present study aimed to identify the function and molecular mechanism of MeCP2 in human breast cancer. Our results revealed strong MeCP2 upregulation in primary breast cancer and indicated that a high MeCP2 level was closely associated with cancer M stage and overall survival, therefore suggesting that MeCP2 may play a crucial role in the carcinogenesis and proliferation of breast cancer.

Our results demonstrated that silencing MeCP2 significantly inhibited breast cancer cell proliferation and impeded tumor growth as well as repressed cell growth by blocking G1–S cell cycle transition through regulating CDK2, P53, and P21^{22–27}, which are cell cycle-regulatory genes involved in tumor carcinogenesis and proliferation^{28,29}. In addition, silencing MeCP2 remarkably suppressed breast cancer cell migration by inhibiting

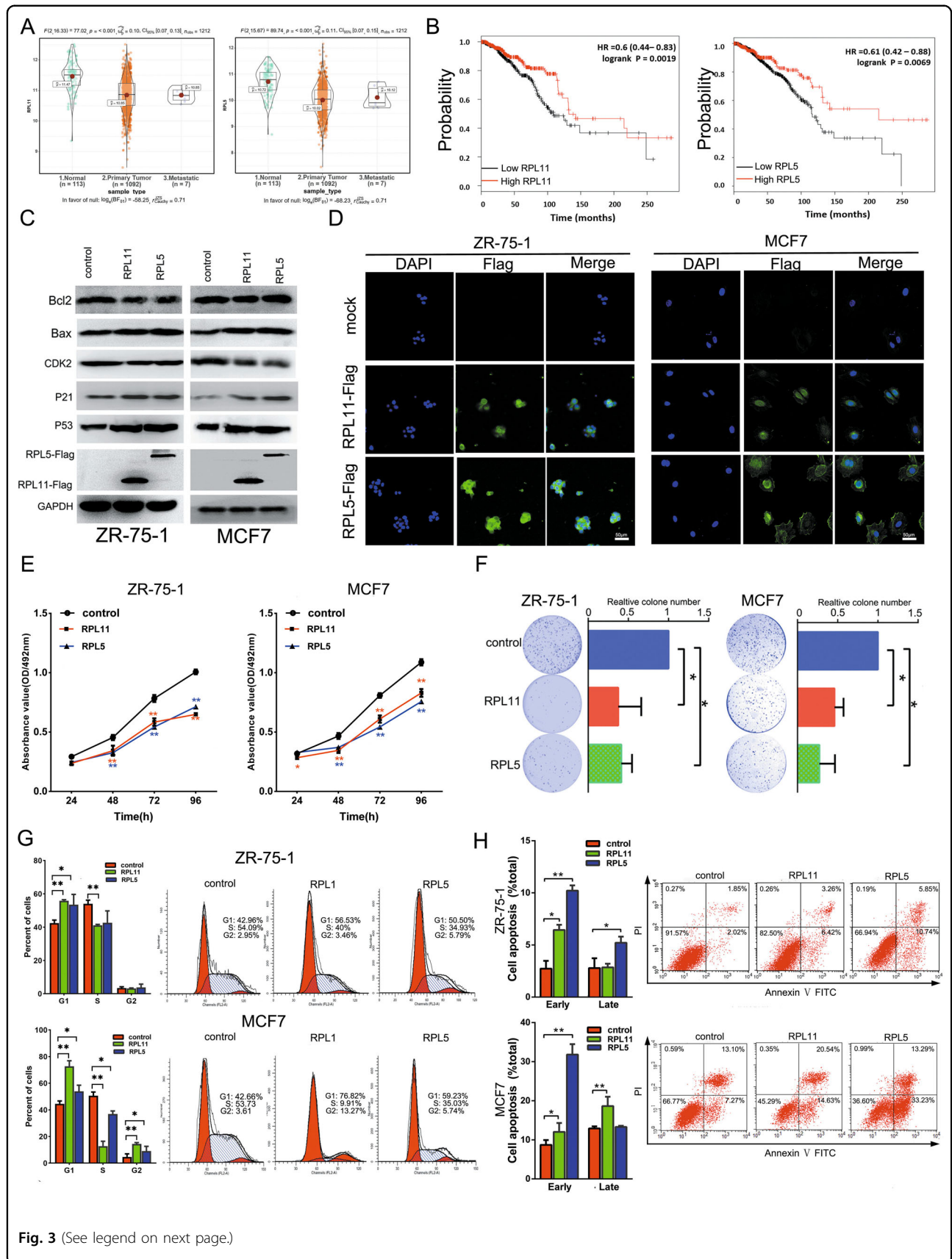


Fig. 3 (See legend on next page.)

(see figure on previous page)

Fig. 3 RPL11 and RPL5 inhibits breast cancer cell proliferation and induced apoptosis. **a** Bioinformatics analysis of RPL11 and RPL5 expressions in breast cancer and para-carcinoma tissues based on TCGA data. **b** Kaplan–Meier curves of breast cancer survival by RPL11 and RPL5 expressions based on TCGA data. **c** Expressions of Bcl2, P53, Bax, CDK2, P21, RPL11, and RPL5 in cells transfected with RPL11 or RPL5 overexpression vector. **d** Immunofluorescence of FLAG-tagged plasmids expressing RPL11 and RPL5 in MCF7 and ZR-75-1 cells. The nuclei were stained by DAPI. **e** MTT assay of cell proliferation at 24, 48 and 72, 96 h after transfection with RPL11 or RPL5 overexpression vector. * $P < 0.05$, ** $P < 0.01$. **f** Colony formation assay 14 days after transfection. * $P < 0.05$. **g** Flow cytometry analysis of cell cycle in MCF7 and ZR-75-1 cells. * $P < 0.05$, ** $P < 0.01$. **h** Flow cytometry analysis of cell apoptosis after transfection with RPL11 or RPL5 overexpression vector. * $P < 0.05$, ** $P < 0.01$.

β -catenin expression and induced cell apoptosis by downregulating the antiapoptotic gene Bcl-2 and upregulating proapoptotic genes, including Bax, P53, and P21. The Bcl-2 family, an apoptosis-related gene family, may be divided into antiapoptotic and proapoptotic genes. Bcl-2 can inhibit apoptosis through forming heterodimers with Bax after inactivating it³⁰. The balance between Bcl-2 and Bax is considered crucial. Amplified Bax accelerates apoptosis, whereas excessive Bcl-2 suppresses it. P53 and P21 exert their tumor-suppressive functions by regulating cell-cycle checkpoints and apoptosis^{31,32}. Taken together, our study confirms the mechanism that MeCP2 promotes breast cancer cell proliferation and inhibits apoptosis by repressing the P53 signaling pathway.

Our GSEA and ChIP-Seq results suggest that RPL11 and RPL5 are MeCP2-targeting genes. It was demonstrated that MeCP2 binds to the methylated CpG islands in the promoter regions of both genes, resulting in downregulated expression. RPL11 and RPL5 are members of the ribosomal protein (RP) family. RPL11 is involved in gastric cancer, colorectal cancer, fibroblasts, lymphoma, and esophageal squamous carcinoma, where it acts as a cancer suppressor gene^{33–37}. RPL5 also functions as a tumor suppressor in multiple cancer types, including multiple myeloma, lymphoblastic leukemia, breast cancer, papillary thyroid carcinoma, and rhabdoid tumors^{38,39}. RPL11 and RPL5 may inhibit cancer cell proliferation and induce apoptosis⁴⁰. In this study, TCGA data revealed that RPL11 and RPL5 expression was significantly lower in breast cancer tissues, and their expression levels were associated with overall survival. Our results indicated that overexpression of RPL11 or RPL5 suppressed breast cancer cell proliferation, blocked G1–S cell-cycle transition, and induced cancer cell apoptosis. Our rescue experiments demonstrated for the first time that MeCP2 promoted breast cancer cell growth and induced apoptosis through suppressing RPL11 and RPL5 transcription by binding to the methylated CpG islands of their promoter regions.

The perturbation of various steps in the complex proteosynthetic process is commonly considered as nucleolar or ribosome biogenesis stress^{41–44}, resulting in cell cycle arrest and senescence or apoptosis through activation of the P53 tumor suppressor protein. MDM2 is an E3

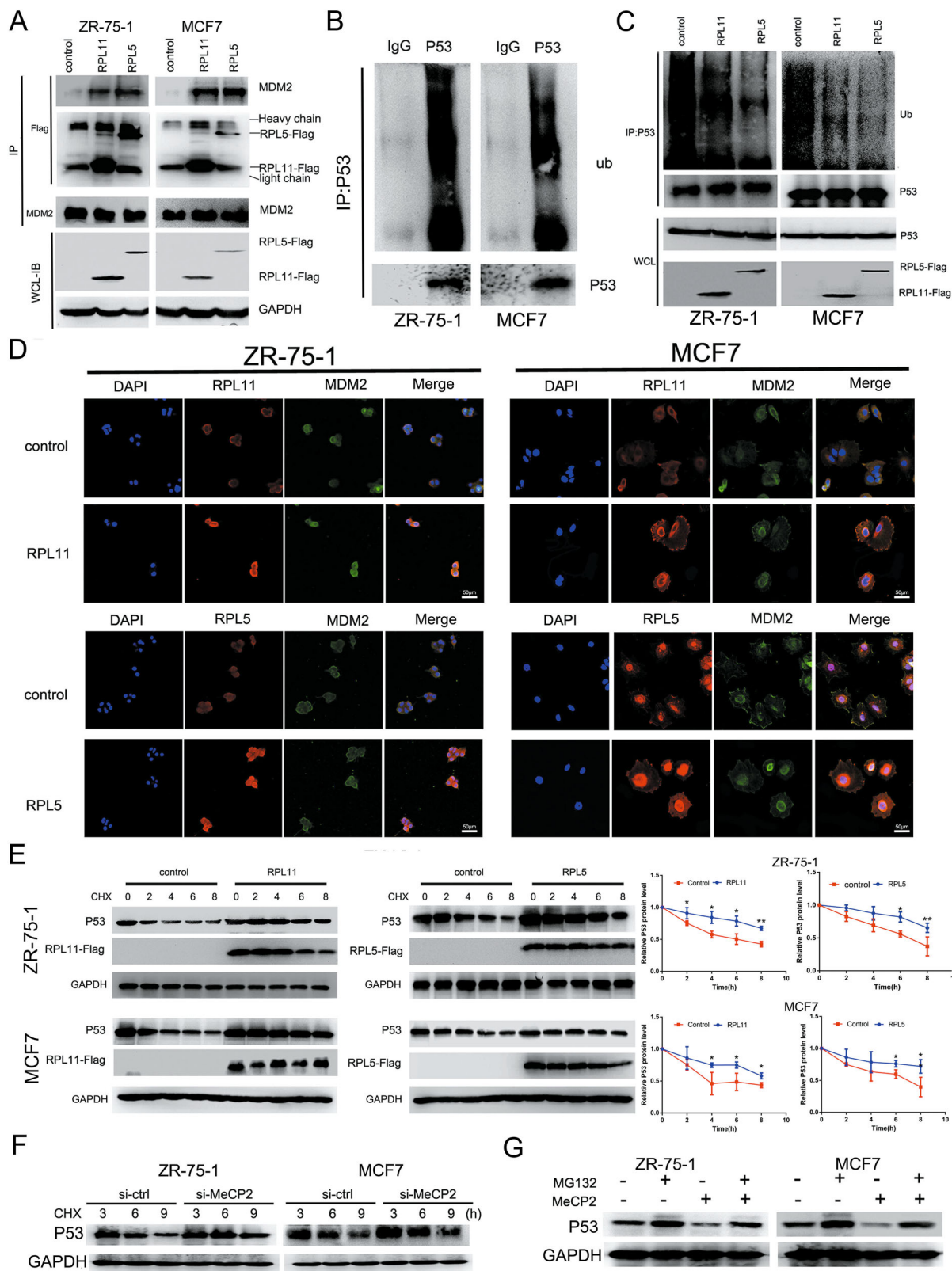
ubiquitin ligase that targets P53 protein for proteasomal degradation^{45,46}. Therefore, MDM2 suppression leads to the stabilization and accumulation of P53. The MDM2–P53 pathway is regulated by certain RPs^{47,48}. In response to nucleolar stress, RPL4, RPL5, RPL11, RPL23, RPS7, and RPS27 translocate from the nucleolus to the nucleoplasm and bind to MDM2, inhibiting its ubiquitin ligase activity toward p53, which leads to p53 accumulation^{49–52}. In this study, we observed that RPL11 and RPL5 suppressed ubiquitination-mediated P53 degradation by directly binding to MDM2. Our experimental results suggested that MeCP2 promoted breast cancer cell proliferation and inhibited apoptosis through promoting ubiquitination-mediated P53 degradation by suppressing RPL11 and RPL5 expression.

In summary, the present study demonstrates that MeCP2 is an oncogene that is highly expressed in breast cancer. MeCP2 promotes breast cancer cell proliferation and cell cycle progression and inhibits cell apoptosis via suppressing the transcription of RPL11 and RPL5 by binding to their promoter regions. Lower protein expression of RPL11 and RPL5 leads to fewer RPL11/MDM2 and RPL5/MDM2 complexes, and increased free-state MDM2 promotes ubiquitination-mediated P53 degradation. Our findings suggest that MeCP2 plays an important role in breast cancer proliferation and may represent a promising therapeutic target for the disease.

Materials and methods

Cell lines

Human breast cancer cell lines MCF-7 and ZR-75-1 were obtained from Genechem (Shanghai Genechem Co., Ltd., Shanghai, China). Both cell lines were identified by short tandem repeat analysis. MCF-7 cells were maintained in 1640 medium (1640; PAA Laboratories GmbH, Cölbe, Germany) supplemented with 10% FBS (Biological Industries, Cromwell, CT, USA), and ZR-75-1 cells were maintained in RPMI 1640 medium (PAA Laboratories GmbH) supplemented with 15% FBS (Biological Industries) and 1% Insulin, Transferrin, Selenium Solution (ITS-G; Gibco, Grand Island, NY, USA). The cells were cultured in a humidified 5% CO₂ incubator at 37 °C. To establish a stable MeCP2 knockdown cell line, MCF-7 cells were firstly transfected by Sh-MeCP2 or control lentivirus.



(see figure on previous page)

Fig. 4 RPL11 and RPL5 suppress P53 degradation via binding to MDM2. **a** Co-immunoprecipitation of MDM2 binding to FLAG-tagged RPL11 or RPL5 in MCF7 and ZR-75-1 cells. Cells transfected with FLAG-tagged RPL11 or RPL5 were used in immunoprecipitation with MDM2 or FLAG antibodies, followed by immunoblot assays. **b** Anti-Ub immunoblotting of P53 ubiquitination in MCF7 and ZR-75-1 cells. **c** P53 ubiquitination in MCF7 and ZR-75-1 cells with or without RPL11/RPL5 transfection. **d** Confocal laser scanning microscopy for co-localization of MDM2/RPL11 or MDM2/RPL5 in MCF7 and ZR-75-1 cells transfected with RPL11 or RPL5 expression vector. **e** Half-life analysis of P53 protein in control and RPL5/RPL11 overexpressed MCF7 and ZR-75-1 cells. 10 µg/ml cycloheximide (CHX) was used to prevent de novo P53 biosynthesis. Left: gel analysis results; right: quantified results (P53 level was quantified and normalized to GAPDH expression). * $P < 0.05$, ** $P < 0.01$. **f** Half-life analysis of P53 protein expression in control and MeCP2 siRNA transfected cells. **g** The P53 protein level in cells transfected with MeCP2 overexpression vector and proteasome inhibitor MG-132.

After geneticin resistance screening, the two cell lines were additionally transfected by the luciferase reporter gene lentivirus to facilitate in vivo imaging experiments.

Animals

Four-week-old female BALB/c nude mice were provided by the Laboratory Animal Center, Xi'an Jiaotong University Health Science Center. The mice were fed under pathogen-free conditions. All experimental procedures followed the criteria of the Institutional Animal Care and Use Committee of the university. The cells transfected with 2×10⁶ Sh-MeCP2 or control lentivirus were resuspended in 100 µl PBS and injected into the contralateral inguen of each mouse. Xenografts were measured 5 days after injection and every 4 days thereafter. The xenograft volume was calculated as $V = L \times (W \times \frac{1}{2})^2$ (L : longest dimension; W : shortest dimension). After 40 days, the luciferase activity of xenografts was detected by small animal imaging. Then, mice were euthanized under deep anesthesia, the xenografts were surgically removed, and the incision was sutured. The xenografts were preserved for use in subsequent experiments.

Cell transfection

PEGFP-C1 vector containing MeCP2 cDNA was purchased from GENEWIZ (Suzhou, China). MBD deletion gene (MeCP2 Δ MBD), TRD deletion gene (MeCP2 Δ TRD), and TRD partial deletion gene (MeCP2 Δ TRD + NLS) were amplified twice using overlap PCR (the primers are shown in Table S3). RPL11, RPL5, and the corresponding control vectors were purchased from Genechem (Shanghai, China). The following siRNAs were purchased from GenePharma (Shanghai, China): control siRNA, forward (5′–3′): UUCUCCGAACGUG UCACGUTT, reverse (5′–3′): ACGUGACACGUUCG GAGAATT; MeCP2 siRNA#1, forward: GCUUCCGA UUAACUGAAATT, reverse: UUUCAGUUAUUCGG GAAGCTT; MeCP2 siRNA#2, forward: GCUUAAGCA AAGGAAUCUTT, reverse: AGAUUCCUUGCUU AAGCTT; RPL11 siRNA, forward: GGUGCGGGAGUA UGAGUUAATT, reverse: UAACUCAUACUCCGCA CCTT; RPL5 siRNA, forward: GGGAGCUGUGGAU

GGAGGCTT, reverse: GCCTCCATCCACAGCTCCC TT. Sh-MeCP2 and control lentiviruses were bought from Genechem and used following the standard protocol. Vector or siRNA transfection was performed according to standard protocols by using PolyPlus (PolyPlus, Illkirch-Graffenstaden, France).

Public clinical datasets analysis

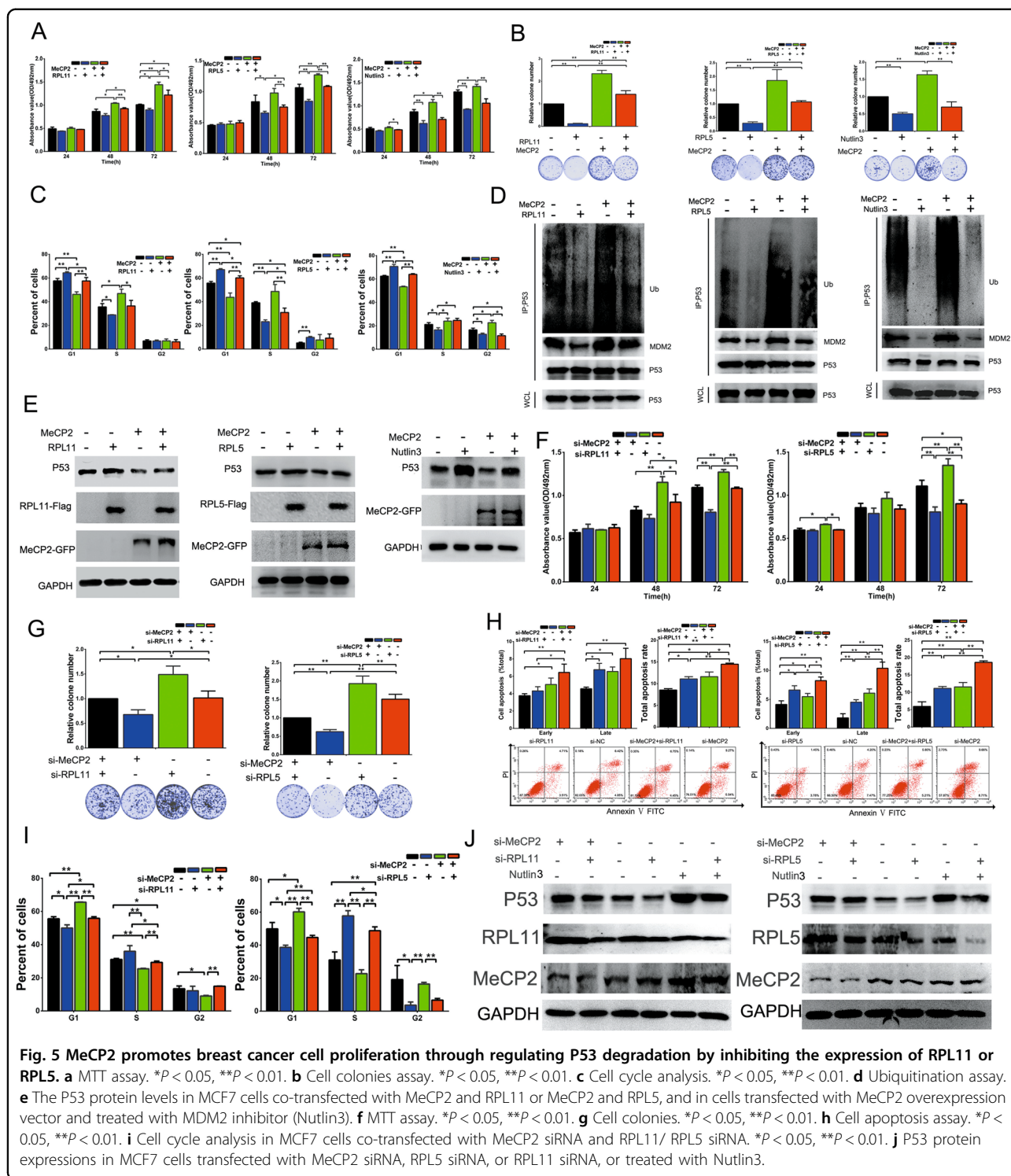
Data regarding MeCP2, RPL11, and RPL5 expression and clinical information were downloaded from Broad Institute's Firehose (<https://xenabrowser.net>)⁵³. For GSEA, breast cancer patients were classified into high- and low-MECP2 expression groups according to the median MeCP2 expression. The analysis was done in the desktop GSEA software^{54,55} using 1000 phenotype permutations, and gene sets with a nominal P value < 0.05 and false discovery rate FDR < 0.25 were considered significant. TCGA breast cancer data were evaluated using the pan-cancer data of the online databases Kaplan Meier Plotter⁵⁶ and GEPIA⁵⁷, and the best cutoff values were selected according to the defined high or low expression of related genes.

Cell viability assay

MCF7 and ZR-75-1 cells were counted and seeded into 96-well plates at 1000 cells per well. After adherence, breast cancer cells were transfected with vectors or siRNAs. After 24, 48, and 72 h of transfection, cells were incubated with 200 µl culture medium containing 10 µl MTT (5 mg/ml) in 37 °C for 4 h in a humidified 5% CO₂ atmosphere. The supernate was pipetted out carefully, and the bottom substrate was treated with 150 µl DMSO per well and incubated for 15 min in the dark at 25 °C. Absorbance was detected at 492 nm using a microplate reader.

Clone formation assay

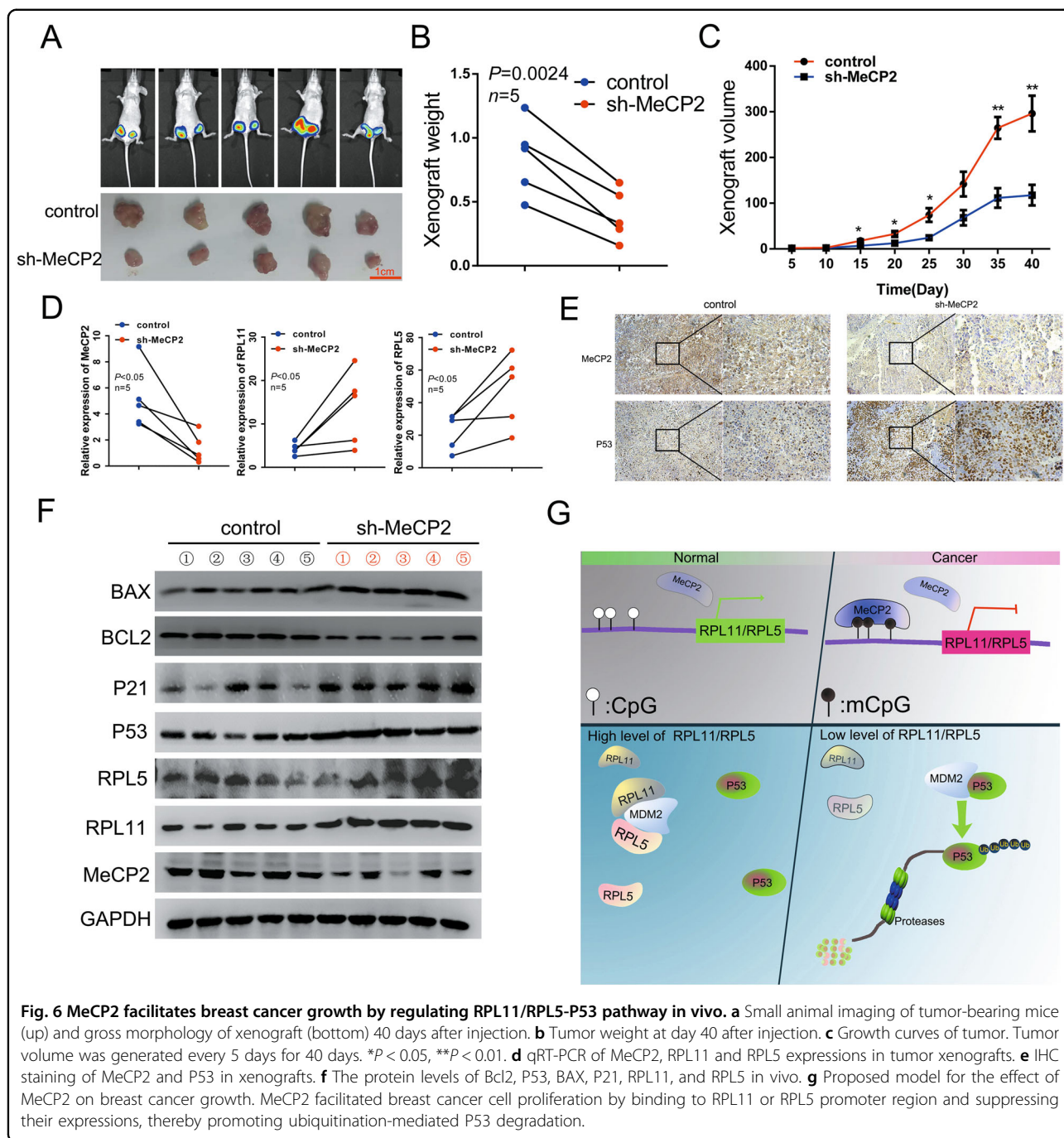
MCF7 and ZR-75-1 cells were seeded in 6-well plates and transfected with vectors or siRNAs. After 24 h, the cells were harvested, diluted, seeded into new 6-well plates at low density (1000 cells per well), and cultured for 14 days. The colonies were fixed in 4% paraformaldehyde and stained with 1% crystal violet. The clones were photographed and counted in an image acquisition system.



Wound-healing assay

MCF7 cells were cultured in 6-well plates and transfected after reaching 50% cell density. After transfection, the cells were wounded using a 10 μ l pipette tip and then washed three times with PBS. The cells were

cultured in 1640 medium (1640; PAA Laboratories GmbH) supplemented with 1% FBS (Biological Industries) at 37 $^{\circ}$ C in a humidified 5% CO₂ atmosphere. The wounds were photographed at 0, 24, 48, and 72 h after transfection.



Invasion assay

For invasion assay, MCF7 cells were cultured in 6-well plates, transfected with siRNAs, harvested, and counted. Then, 6000 cells were diluted in 200 μ l FBS free medium and seeded into the upper Transwell chamber (MCMP24H48, Merck KGaA, Darmstadt, Germany), a 24-well plate was placed in the Transwell chamber, and the bottom wells were filled with 500 μ l 15% FBS medium. After 24 h of culture, cells were carefully removed, and the

cells that invaded through the membrane were fixed in 4% paraformaldehyde and stained with 1% crystal violet staining solution. The invasive cells were photographed and counted.

Flow cytometry assay

Cell cycle and apoptosis were analyzed as previously described¹⁶. Cell phase was examined by flow cytometry (FACS Calibur, BD Biosciences, San Jose, CA, USA).

Chromatin immunoprecipitation (ChIP)

ChIP was performed as previously described¹⁶. Briefly, cells were cross-linked in RPMI 1640 containing 1% formaldehyde for 15 min at room temperature. Chromatin was fragmented by ultrasound, and the lysate was immunoprecipitated with Dynal magnetic beads (Invitrogen, Carlsbad, CA, USA) and antibodies for MeCP2 (ab2828, Abcam, Cambridge, MA, USA) or GFP (ab290, Abcam). After DNA elution and purification, qPCR and/or PCR were performed. IgG was used as a negative control.

Immunofluorescence

Cells were seeded into Nunc Glass Bottom Dishes (Thermo Scientific, Waltham, MA, USA). After 48 h, the cells were fixed in 4% paraformaldehyde, permeabilized with PBST, and blocked in PBSB. Then, the cells were incubated with the primary antibodies RPL11 (#18163, CST, Danvers, MA, USA), RPL5 (#51345, CST), P53 (10442-1-AP, Proteintech, Wuhan, China), and Flag (#8146, CST) overnight at 4 °C. After incubation with the secondary antibodies and DAPI, cells were observed under a fluorescence microscope.

Co-immunoprecipitation

After harvesting cells using RIPA buffer, the lysate was incubated overnight with primary antibodies MDM2 (66511-1-Ig, Proteintech), P53 (10442-1-AP, Proteintech) and Flag (#8146, CST). The protein-antibody complex was incubated with Dynal magnetic beads for 2 h and then boiled with loading buffer for 10 min. The obtained supernatant was used for western blotting analysis. Antibodies from different species were used to eliminate the effects of light and heavy chains of primary antibodies on the analysis. The following antibodies were used in western blotting: P53 (60283-2-Ig, Proteintech), MDM2 (19058-1-AP, Proteintech), and ubiquitin (sc-8017, Santa Cruz).

Statistical analysis

Gene expression levels and correlations between MeCP2 and RPL11 or RPL5 from TCGA were analyzed by R package ggstatsplot⁵⁸. The correlation matrix analysis was conducted using R package corrplot⁵⁹. Other data were analyzed using SPSS 24.0. Student's two-tailed t-test was used for comparisons between two groups. Differences between samples are presented as the mean ± SD.

Acknowledgements

This work was supported by the National Natural Science Foundation of China (81972603, 81874192, 81702918, 81660492) and Yanan City Science and Technology Research Development Planning Project (2016KS-06).

Author details

¹Department of Cell Biology and Genetics/Key Laboratory of Environment and Genes Related to Diseases, School of Basic Medical Sciences, Xi'an Jiaotong

University Health Science Center, Xi'an, Shaanxi 710061, China. ²Institute of Genetics and Developmental Biology, Translational Medicine Institute, School of Basic Medical Sciences, Xi'an Jiaotong University Health Science Center, Xi'an, Shaanxi 710061, China. ³Department of Clinical Medicine, Medical College of Yan'an University, Yan'an, Shanxi 716000, China

Conflict of interest

The authors declare that they have no conflict of interest.

Publisher's note

Springer Nature remains neutral with regard to jurisdictional claims in published maps and institutional affiliations.

Supplementary Information accompanies this paper at (<https://doi.org/10.1038/s41389-020-0239-7>).

Received: 16 February 2020 Revised: 13 May 2020 Accepted: 14 May 2020
Published online: 01 June 2020

References

- Torre, L. A. et al. Global cancer statistics, 2012. *CA Cancer J. Clin.* **65**, 87–108 (2015).
- Ferlay, J. et al. Cancer incidence and mortality worldwide: sources, methods and major patterns in GLOBOCAN 2012. *Int. J. Cancer* **136**, E359–E386 (2015).
- He, J., Chen, Y., Cai, L., Li, Z. & Guo, X. UBAP2L silencing inhibits cell proliferation and G2/M phase transition in breast cancer. *Breast Cancer* **25**, 224–232 (2018).
- Chaturvedi, R. et al. Increased *Helicobacter pylori*-associated gastric cancer risk in the Andean region of Colombia is mediated by spermine oxidase. *Oncogene* **34**, 3429–3440 (2015).
- Zheng, R. & Blobel, G. A. GATA Transcription Factors and Cancer. *Genes Cancer* **1**, 1178–1188 (2010).
- Vieira, J. P. et al. Variant Rett syndrome in a girl with a pericentric X-chromosome inversion leading to epigenetic changes and overexpression of the MECP2 gene. *Int. J. Dev. Neurosci.* **46**, 82–87 (2015).
- Hite, K. C., Adams, V. H. & Hansen, J. C. Recent advances in MeCP2 structure and function. *Biochem. Cell Biol.* **87**, 219–227 (2009).
- Chahrouh, M. et al. MeCP2, a key contributor to neurological disease, activates and represses transcription. *Science* **320**, 1224–1229 (2008).
- Mellen, M., Ayata, P., Dewell, S., Kriaucionis, S. & Heintz, N. MeCP2 binds to 5hmC enriched within active genes and accessible chromatin in the nervous system. *Cell* **151**, 1417–1430 (2012).
- Ballas, N., Grunseich, C., Lu, D. D., Speh, J. C. & Mandel, G. REST and its corepressors mediate plasticity of neuronal gene chromatin throughout neurogenesis. *Cell* **121**, 645–657 (2005).
- Neupane, M. et al. MECP2 is a frequently amplified oncogene with a novel epigenetic mechanism that mimics the role of activated RAS in malignancy. *Cancer Discov.* **6**, 45–58 (2016).
- Muller, H. M. et al. MeCP2 and MBD2 expression in human neoplastic and non-neoplastic breast tissue and its association with oestrogen receptor status. *Br. J. Cancer* **89**, 1934–1939 (2003).
- Liu, Y. et al. DNA methylation of claudin-6 promotes breast cancer cell migration and invasion by recruiting MeCP2 and deacetylating H3Ac and H4Ac. *J. Exp. Clin. Cancer Res.* **35**, 120 (2016).
- Koch, C. & Stratling, W. H. DNA binding of methyl-CpG-binding protein MeCP2 in human MCF7 cells. *Biochemistry* **43**, 5011–5021 (2004).
- Ballestar, E. et al. Methyl-CpG binding proteins identify novel sites of epigenetic inactivation in human cancer. *The EMBO J.* **22**, 6335–6345 (2003).
- Zhao, L. et al. MeCP2 promotes gastric cancer progression through regulating FOXF1/Wnt5a/beta-Catenin and MYOD1/Caspase-3 signaling Pathways. *EBio-Medicine* **16**, 87–100 (2017).
- Zhao, L. Y. et al. MeCP2, a target of miR-638, facilitates gastric cancer cell proliferation through activation of the MEK1/2-ERK1/2 signaling pathway by upregulating GIT1. *Oncogenesis* **6**, e368 (2017).
- Stark, C. et al. BioGRID: a general repository for interaction datasets. *Nucleic Acids Res.* **34**, D535–D539 (2006).
- Murphy, D. M. et al. Co-localization of the oncogenic transcription factor MYCN and the DNA methyl binding protein MeCP2 at genomic sites in neuroblastoma. *PLoS ONE* **6**, e21436 (2011).

20. Meng, G., Lv, Y., Dai, H., Zhang, X. & Guo, Q. N. Epigenetic silencing of methyl-CpG-binding protein 2 gene affects proliferation, invasion, migration, and apoptosis of human osteosarcoma cells. *Tumour Biol.* **35**, 11819–11827 (2014).
21. Babbio, F. et al. Knock-down of methyl CpG-binding protein 2 (MeCP2) causes alterations in cell proliferation and nuclear lamins expression in mammalian cells. *BMC Cell Biol.* **13**, 19 (2012).
22. Oakes, V. et al. Cyclin A/Cdk2 regulates Cdh1 and claspin during late S/G2 phase of the cell cycle. *Cell Cycle* **13**, 3302–3311 (2014).
23. Chae, H. D., Yun, J., Bang, Y. J. & Shin, D. Y. Cdk2-dependent phosphorylation of the NF-Y transcription factor is essential for the expression of the cell cycle-regulatory genes and cell cycle G1/S and G2/M transitions. *Oncogene* **23**, 4084–4088 (2004).
24. Neganova, I., Zhang, X., Atkinson, S. & Lako, M. Expression and functional analysis of G1 to S regulatory components reveals an important role for CDK2 in cell cycle regulation in human embryonic stem cells. *Oncogene* **28**, 20–30 (2009).
25. Fischer, M., Quaas, M., Steiner, L. & Engeland, K. The p53-p21-DREAM-CDE/CHR pathway regulates G2/M cell cycle genes. *Nucleic Acids Res.* **44**, 164–174 (2016).
26. Jung, S. H. et al. Acyl-CoA thioesterase 7 is involved in cell cycle progression via regulation of PKCzeta-p53-p21 signaling pathway. *Cell Death Dis.* **8**, e2793 (2017).
27. Yang, H. W., Chung, M., Kudo, T. & Meyer, T. Competing memories of mitogen and p53 signalling control cell-cycle entry. *Nature* **549**, 404–408 (2017).
28. Sawair, F. et al. p53, Cyclin D1, p21 (WAF1) and Ki-67 (MIB1) Expression at Invasive Tumour Fronts of Oral Squamous Cell Carcinomas and Development of Local Recurrence. *Asian Pac. J. cancer Prev.* **17**, 1243–1249 (2016).
29. Zinčuk, J. et al. p16, p21, and p53 proteins play an important role in development of pancreatic intraepithelial neoplastic. *Ir. J. Med. Sci.* **187**, 629–637 (2018).
30. Zhang, Y., Yang, X., Ge, X. & Zhang, F. Puerarin attenuates neurological deficits via Bcl-2/Bax/cleaved caspase-3 and Sirt3/SOD2 apoptotic pathways in subarachnoid hemorrhage mice. *Biomed. Pharmacother.* **109**, 726–733 (2019).
31. Kim, E. M. et al. The p53/p21 complex regulates cancer cell invasion and apoptosis by targeting Bcl-2 family proteins. *Cancer Res.* **77**, 3092–3100 (2017).
32. Zamir-Nasta, T., Razi, M., Shapour, H. & Malekinejad, H. Roles of p21, p53, cyclin D1, CDK-4, estrogen receptor alpha in aflatoxin B1-induced cytotoxicity in testicular tissue of mice. *Environ. Toxicol.* **33**, 385–395 (2018).
33. Deng, X. et al. Long noncoding RNA PiHL regulates p53 protein stability through GRWD1/RPL11/MDM2 axis in colorectal cancer. *Theranostics* **10**, 265–280 (2020).
34. Uchi, R. et al. PICT1 regulates TP53 via RPL11 and is involved in gastric cancer progression. *Br. J. cancer* **109**, 2199–2206 (2013).
35. Kayama, K. et al. GRWD1 negatively regulates p53 via the RPL11-MDM2 pathway and promotes tumorigenesis. *EMBO Rep.* **18**, 123–137 (2017).
36. Morgado-Palacin, L. et al. Partial Loss of Rpl11 in adult mice recapitulates diamond-blackfan anemia and promotes lymphomagenesis. *Cell Rep.* **13**, 712–722 (2015).
37. Wang, X. et al. Down-regulation of 5S rRNA by miR-150 and miR-383 enhances c-Myc-rpl11 interaction and inhibits proliferation of esophageal squamous carcinoma cells. *FEBS Lett.* **589**, 3989–3997 (2015).
38. Ren, Y., Tao, C., Wang, X. & Ju, Y. Identification of RPL5 and RPL10 as novel diagnostic biomarkers of Atypical teratoid/rhabdoid tumors. *Cancer Cell Int.* **18**, 190 (2018).
39. Hofman, I. J. F. et al. Low frequency mutations in ribosomal proteins RPL10 and RPL5 in multiple myeloma. *Haematologica* **102**, e317–e320 (2017).
40. De Keersmaecker, K. et al. Exome sequencing identifies mutation in CNOT3 and ribosomal genes RPL5 and RPL10 in T-cell acute lymphoblastic leukemia. *Nat. Genet.* **45**, 186–190 (2013).
41. Yang, L., Song, T., Chen, L., Soliman, H. & Chen, J. Nucleolar repression facilitates initiation and maintenance of senescence. *Cell Cycle* **14**, 3613–3623 (2015).
42. Morgado-Palacin, L. et al. Non-genotoxic activation of p53 through the RPL11-dependent ribosomal stress pathway. *Carcinogenesis* **35**, 2822–2830 (2014).
43. Bursac, S., Brdovcak, M. C., Donati, G. & Volarevic, S. Activation of the tumor suppressor p53 upon impairment of ribosome biogenesis. *Biochim. Biophys. Acta* **1842**, 817–830 (2014).
44. Fumagalli, S., Ivanenkov, V. V., Teng, T. & Thomas, G. Supra-induction of p53 by disruption of 40S and 60S ribosome biogenesis leads to the activation of a novel G2/M checkpoint. *Genes Dev.* **26**, 1028–1040 (2012).
45. Michael, D. & Oren, M. The p53-Mdm2 module and the ubiquitin system. *Semin. cancer Biol.* **13**, 49–58 (2003).
46. Haupt, Y., Maya, R., Kazaz, A. & Oren, M. Mdm2 promotes the rapid degradation of p53. *Nature* **387**, 296–299 (1997).
47. Lindstrom, M. S., Deisenroth, C. & Zhang, Y. Putting a finger on growth surveillance: insight into MDM2 zinc finger-ribosomal protein interactions. *Cell Cycle* **6**, 434–437 (2007).
48. Sasaki, M. et al. Regulation of the MDM2-P53 pathway and tumor growth by PICT1 via nucleolar RPL11. *Nat. Med.* **17**, 944–951 (2011).
49. Warner, J. R. & McIntosh, K. B. How common are extraribosomal functions of ribosomal proteins? *Mol. Cell* **34**, 3–11 (2009).
50. Zhang, Y. & Lu, H. Signaling to p53: ribosomal proteins find their way. *Cancer Cell* **16**, 369–377 (2009).
51. Zhu, Y. et al. Ribosomal protein S7 is both a regulator and a substrate of MDM2. *Mol. Cell* **35**, 316–326 (2009).
52. Turi, Z., Senkyrikova, M., Mistrik, M., Bartek, J. & Moudry, P. Perturbation of RNA Polymerase I transcription machinery by ablation of HEATR1 triggers the RPL5/RPL11-MDM2-p53 ribosome biogenesis stress checkpoint pathway in human cells. *Cell Cycle* **17**, 92–101 (2018).
53. Goldman, M. et al. Visualizing and interpreting cancer genomics data via the Xena platform. *Nat. Biotechnol.* (2020). [published online ahead of print].
54. Subramanian, A. et al. Gene set enrichment analysis: a knowledge-based approach for interpreting genome-wide expression profiles. *Proc. Natl Acad. Sci. USA* **102**, 15545–15550 (2005).
55. Mootha, V. K. et al. PGC-1 α -responsive genes involved in oxidative phosphorylation are coordinately downregulated in human diabetes. *Nat. Genet.* **34**, 267–273 (2003).
56. Györfy, B. et al. TP53 mutation-correlated genes predict the risk of tumor relapse and identify MPS1 as a potential therapeutic kinase in TP53-mutated breast cancers. *Mol. Oncol.* **8**, 508–519 (2014).
57. Tang, Z. et al. GEPIA: a web server for cancer and normal gene expression profiling and interactive analyses. *Nucleic Acids Res.* **45**, W98–W102 (2017).
58. Patil I. ggstatsplot: “ggplot2” Based Plots with Statistical Details (CRAN, 2018).
59. Wei, T. & Simko, V. R package “corrplot”: Visualization of a Correlation Matrix (Version 0.84). <https://github.com/taiyun/corrplot> (2017).