

RESEARCH ARTICLE

Open Access



Growth differentiation factor 15 is not associated with glycemic control in patients with type 2 diabetes mellitus treated with metformin: a post-hoc analysis of AIM study

Fei Gao[†], Cheng Li[†], Yufei Wang, Jingyi Lu, Wei Lu, Jian Zhou, Jun Yin* and Xiaojing Ma* 

Abstract

Background: Growth differentiation factor 15 (GDF15) was newly discovered to be a promising target of metformin. The study was aimed to investigate the relationship between GDF15 and glycemic control after metformin treatment in patients with type 2 diabetes mellitus.

Methods: The study was a post-hoc analysis of AIM (the effect of Acarbose on glycemic variability in patients with type 2 diabetes mellitus using premixed Insulin compared to Metformin) study. The participants were randomly assigned to 12 weeks of metformin (MET) or acarbose (ACA) treatment combined with insulin. Serum GDF15 levels of 51 subjects from MET group and 53 subjects from ACA group were measured at baseline and after a 12-week treatment. Fasting plasma glucose (FPG), 2-h postprandial plasma glucose (2-h PG) and glycated hemoglobin A1c (HbA1c) were measured at baseline and endpoint.

Results: After a 12-week treatment, serum GDF15 levels significantly increased in MET group [baseline vs. endpoint, 936.70 (741.00, 1205.40) pg/mL vs. 1265.20 (1027.90, 1634.00) pg/mL, $P < 0.001$], but not in ACA group [baseline vs. endpoint, 920.60 (701.45, 1332.55) pg/mL vs. 893.80 (663.25, 1284.05) pg/mL, $P = 0.944$]. However, there were no significant differences of glycemic control parameters (Δ FPG, Δ 2-h PG and Δ HbA1c) between subgroups of MET group divided by median of Δ GDF15 (all $P > 0.05$). Spearman correlation coefficient and analysis of covariance after adjustment for baseline HbA1c levels showed that Δ GDF15 was not correlated with Δ FPG, Δ 2-h PG and Δ HbA1c (all $P > 0.05$).

Conclusion: Serum GDF15 levels were significantly elevated after metformin treatment in patients with type 2 diabetes mellitus. However, the increase was not an indicator of the glucose-lowering effect of metformin.

Trial registration: Clinicaltrials.gov, [NCT02438397](https://clinicaltrials.gov/ct2/show/study/NCT02438397). Registered 8 May 2015.

[†]Fei Gao and Cheng Li contributed equally to this work.

*Correspondence: yinjun@sjtu.edu.cn; maxiaojing@sjtu.edu.cn

Department of Endocrinology and Metabolism, Shanghai Jiao Tong University Affiliated Sixth People's Hospital, Shanghai Clinical Center for Diabetes, Shanghai Diabetes Institute, Shanghai Key Laboratory of Diabetes Mellitus, 600 Yishan Road, Shanghai 200233, China



© The Author(s) 2022. **Open Access** This article is licensed under a Creative Commons Attribution 4.0 International License, which permits use, sharing, adaptation, distribution and reproduction in any medium or format, as long as you give appropriate credit to the original author(s) and the source, provide a link to the Creative Commons licence, and indicate if changes were made. The images or other third party material in this article are included in the article's Creative Commons licence, unless indicated otherwise in a credit line to the material. If material is not included in the article's Creative Commons licence and your intended use is not permitted by statutory regulation or exceeds the permitted use, you will need to obtain permission directly from the copyright holder. To view a copy of this licence, visit <http://creativecommons.org/licenses/by/4.0/>. The Creative Commons Public Domain Dedication waiver (<http://creativecommons.org/publicdomain/zero/1.0/>) applies to the data made available in this article, unless otherwise stated in a credit line to the data.

Keywords: Growth differentiation factor 15, Metformin, Glycemic control, Type 2 diabetes mellitus

Background

Metformin is the most commonly used oral antidiabetic drug [1–3], which can reduce hepatic glucose production and peripheral insulin resistance and thereby lower blood glucose levels [4–6]. Growth differentiation factor 15 (GDF15), also known as macrophage inhibitory cytokine 1, is a stress responsive cytokine [7–9]. Previous studies found that GDF15 was closely related to diabetes mellitus [7, 10, 11], while GDF15 was newly discovered to be a promising target of metformin [12, 13]. Coll et al. [13] revealed that metformin treatment was related to increased levels of circulation GDF15 in people without diabetes mellitus, while the change of GDF15 levels in metformin group was significantly correlated with weight loss. Our previous study also revealed that increased serum GDF15 was related to metabolic improvement by lifestyle intervention among young overweight and obese adults [14]. However, in addition to its association with weight control, the relationship between GDF15 and glycemic control during metformin therapy still remains unknown.

Therefore, in the present study, we measured the serum GDF15 concentrations from the AIM (the effect of Acarbose on glycemic variability in patients with type 2 diabetes mellitus using premixed Insulin compared to Metformin) study [15] to explore the association between metformin treatment, glycemic control and the change of serum GDF15 levels.

Materials and methods

Study design and participants

The present study is a post-hoc analysis of the AIM study. The AIM study was an open-labeled randomized clinical trial designed to investigate the effect of acarbose on glycemic variability in patients with type 2 diabetes mellitus using premixed insulin compared to metformin. The study protocol and main results of the trial have been published [15]. The AIM study was a prospective trial registered at www.ClinicalTrials.gov with clinical trial registration number NCT02438397.

In brief, the AIM study enrolled patients with type 2 diabetes using premixed insulin and the glycated hemoglobin A1c (HbA1c) levels were between 7 and 10% before randomization. Patients taking more than two oral antidiabetic drugs or taking one oral antidiabetic drug at the maximum therapeutic dose were excluded. The main inclusion and exclusion criteria were described in detail in the previously published article [15].

The eligible patients were randomly assigned to 12 weeks of metformin (MET group, $n=62$) or acarbose (ACA group, $n=62$) treatment combined with insulin according to the random encoder [15]. The initial dose of ACA was 50 mg three times a day at three meals and the dose was raised to 100 mg three times a day at three meals 1 week later. The dose of metformin was 500 mg three times a day throughout the study. The patients have already made adjustment to their lifestyle before the enrollment and did not change their previous lifestyle during the 12-week hypoglycemic intervention. Finally, 54 subjects from MET group and 61 from ACA group completed the whole study.

The study was approved by the Ethics Committee of Shanghai Jiao Tong University Affiliated Sixth People's Hospital and was in accordance with the 1964 Declaration of Helsinki. Informed consent was obtained from each subject at the beginning of the study.

Anthropometric and biochemical measurements

Each subject had standardized meal tests at baseline and at the 12-week follow-up visit. Fasting blood samples were collected after an 8-hour overnight fast and postprandial blood was collected 2-hour later. The standard meal test was standardized instant noodles containing 69.3 g of carbohydrates, 9.3 g of protein, and 1.5 g of fat [15]. Blood pressure, height and waist were measured. $BMI = \text{weight (kg)} / \text{height (m)}^2$.

Plasma glucose including fasting plasma glucose (FPG) and 2-h postprandial plasma glucose (2-h PG) levels were measured by glucose oxidase method. HbA1c was measured by using high-performance liquid chromatography with a VARIANT II Hemoglobin A1c analyzer (Bio-Rad Laboratories, Hercules, CA). Triglycerides (TG), total cholesterol (TC), high-density lipoprotein cholesterol (HDL-c), and low-density lipoprotein cholesterol (LDL-c) were determined by applying standard enzymatic methods using a biochemical analyzer (7600–120; Hitachi, Tokyo, Japan). The criteria for the serum sample included: 1) the volume of the serum sample was enough for the assay; 2) serum sample was stored properly. For fasting serum GDF15 levels, 51 of subjects from MET group and 53 subjects from ACA group were measured at the baseline and endpoint by quantitative sandwich enzyme-linked immunosorbent assay (R&D Systems, Minneapolis, USA).

Statistical analyses

Statistical analyses were performed in SPSS version 24.0 (SPSS, Inc., Chicago, IL). The Kolmogorov-Smirnov test was performed to determine normality of the data distribution. Variables with a normal distribution were presented as means ± standard deviation (SD), and variables with a skewed distribution were presented as median (interquartile range). Differences of the parameters before and after treatment were compared by the paired *t*-test or Wilcoxon signed rank test. Differences between groups were compared using the student *t*-test or the Mann-Whitney test. The correlation between clinical parameters and the change of serum GDF15 levels were assessed by Spearman correlation coefficient and analysis of covariance (ANCOVA). A *P* value of <0.05 (two-tailed) was considered statistically significant.

Results

Basic characteristics of the subjects

We finally enrolled a total of 51 subjects from MET group and 53 subjects from ACA group in the present analysis. The characteristics of the participants at baseline and at the endpoint are presented in Table 1. Compared with baseline levels, glycemic control parameters (FPG, 2-h PG, HbA1c) all significantly improved in both MET and ACA group after a 12-week therapy (all *P*<0.01, Table 1). Body weight, BMI and waist circumference did not change in MET group (all *P*>0.05, Table 1).

Change of serum GDF15 levels before and after treatment

After a 12-week treatment, serum GDF15 levels significantly increased in MET group [baseline vs. endpoint, 936.70 (741.00, 1205.40) pg/mL vs. 1265.20 (1027.90, 1634.00) pg/mL, *P*<0.001, Fig. 1A], but not in ACA group [baseline vs. endpoint, 920.60 (701.45, 1332.55) pg/mL vs. 893.80 (663.25, 1284.05) pg/mL, *P*=0.944, Fig. 1A]. There were no differences of serum GDF15 levels between the MET group and ACA group at baseline (*P*=0.946), while serum GDF15 levels at the endpoint were much higher in MET group than those in ACA group (*P*<0.001).

Relationship between serum GDF15 levels and glycemic parameters in the MET group

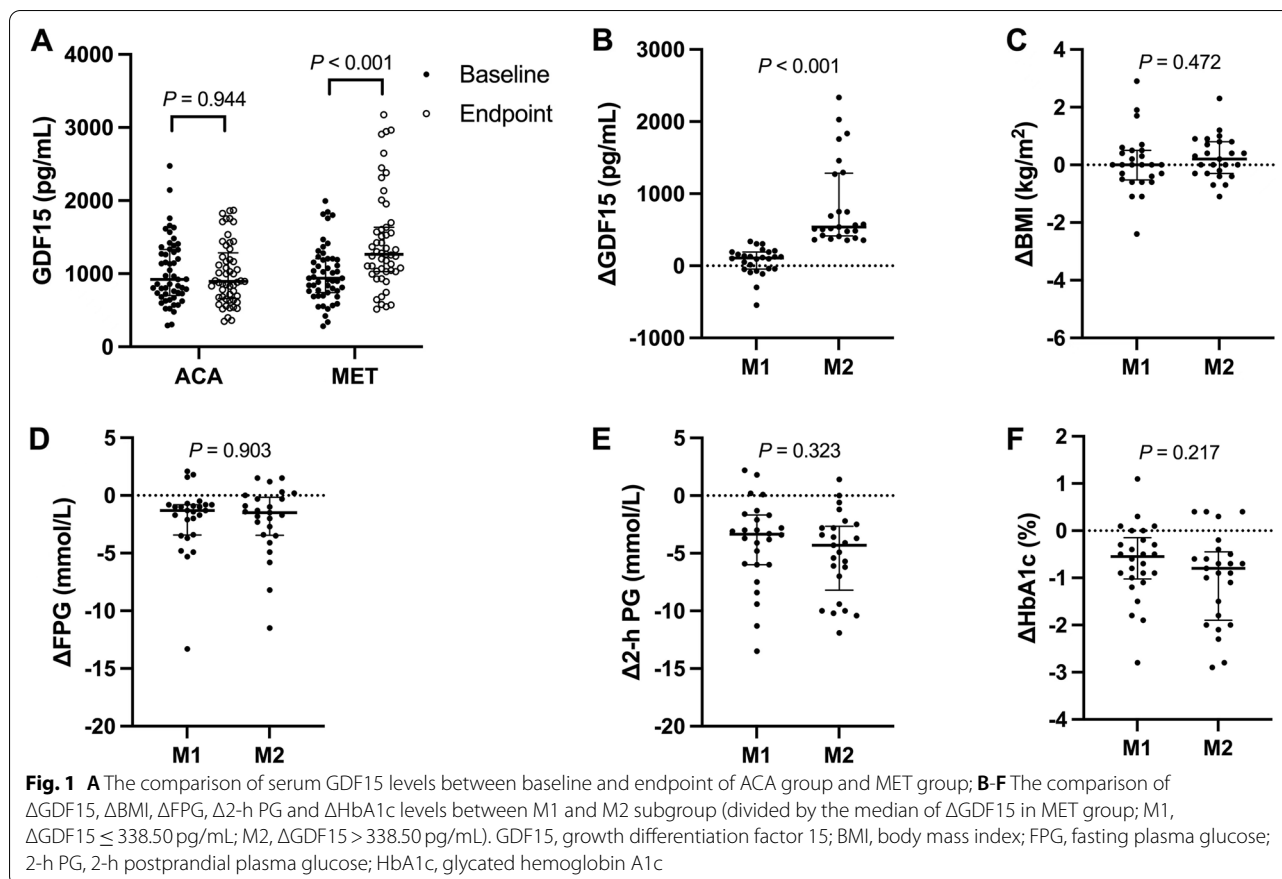
Since the differences of serum GDF15 levels after treatment were only discovered in the MET group, we divided the MET group into two subgroups (M1 group, *n*=26; M2 group, *n*=25) according to the median of ΔGDF15 levels [338.50 (101.10, 538.00) pg/mL], to further explore the relationship between ΔGDF15 and glycemic control parameters. The clinical characteristics of the participants of M1 and M2 subgroups are presented in Table 2. Body weight, BMI and waist circumference showed no significant differences in M1 and M2 group (all *P*>0.05, Table 2). TG levels were lower while HDL-c levels were higher in M2 group at baseline (all *P*<0.05, Table 2). There were no significant differences between M1 and M2 subgroup in glycemic control parameters (FPG,

Table 1 Clinical characteristics of the participants at the baseline and endpoint

	Metformin (N = 51)			Acarbose (N = 53)		
	Baseline	Endpoint	<i>P</i>	Baseline	Endpoint	<i>P</i>
Sex (male/female)	28/23	–	–	32/21	–	–
Age (year)	60.00 (53.00, 64.00)	–	–	63.00 (57.00, 67.00)	–	–
Diabetes duration (year)	14.00 (10.00, 17.00)	–	–	16.00 (11.00, 20.00)	–	–
Body weight (kg)	74.13 ± 10.22	73.65 ± 10.14	0.181	69.66 ± 9.23	68.63 ± 9.34	<0.001
BMI (kg/m ²)	26.37 ± 2.80	26.21 ± 2.83	0.197	25.31 ± 2.42	24.94 ± 2.43	<0.001
Waist circumference (cm)	91.11 ± 10.66	92.35 ± 9.61	0.186	88.68 ± 8.33	88.49 ± 8.10	0.736
SBP (mmHg)	137.00 ± 13.00	133.00 ± 16.00	0.107	136.00 ± 16.00	130.00 ± 14.00	0.005
DBP (mmHg)	81.00 (76.00, 86.00)	80.00 (76.00, 85.00)	0.587	81.00 (73.00, 85.00)	77.00 (71.00, 82.00)	0.089
TC (mmol/L)	4.97 ± 1.18	4.82 ± 1.06	0.386	4.93 ± 0.90	4.97 ± 1.08	0.781
TG (mmol/L)	1.63 (1.10, 2.25)	1.55 (1.02, 2.18)	0.636	1.33 (0.95, 2.10)	1.19 (0.89, 1.53)	0.025
HDL-c (mmol/L)	1.09 (0.96, 1.35)	1.14 (0.95, 1.30)	0.881	1.17 (1.03, 1.46)	1.15 (0.97, 1.33)	0.089
LDL-c (mmol/L)	2.89 ± 0.99	2.76 ± 0.83	0.345	2.94 ± 0.76	3.00 ± 0.85	0.552
FPG (mmol/L)	9.91 (8.79, 12.16)	8.28 (7.29, 9.76)	<0.001	10.29 (8.88, 12.14)	8.71 (7.49, 10.42)	0.003
2-h PG (mmol/L)	20.03 ± 3.31	15.48 ± 3.53	<0.001	20.37 ± 3.72	11.60 ± 3.75	<0.001
HbA1c (%)	8.40 (7.70, 9.00)	7.50 (7.00, 8.10)	<0.001	8.50 (7.80, 9.10)	7.50 (7.00, 8.10)	<0.001

Data are expressed as mean ± SD or median (interquartile range)

Abbreviations: BMI Body mass index, SBP Systolic blood pressure, DBP Diastolic blood pressure, TC Total cholesterol, TG Triglycerides, HDL-c High-density lipoprotein cholesterol, LDL-c Low-density lipoprotein cholesterol, FPG Fasting plasma glucose, 2-h PG 2-h postprandial plasma glucose, HbA1c Glycated hemoglobin A1c



2-h PG and HbA1c) at both baseline and endpoint (all $P > 0.05$, Table 2).

Serum GDF15 levels at baseline were 983.05 (694.70, 1324.85) and 897.40 (769.90, 1171.30) in M1 and M2 group ($P = 0.692$), respectively. Serum GDF15 levels at endpoint were 1040.65 (853.75, 1333.93) and 1559.70 (1247.35, 2416.00) in M1 and M2 group ($P < 0.001$), respectively. The median (interquartile range) of Δ GDF15 of M1 and M2 subgroup were 108.15 (-44.23, 191.68) and 538.00 (415.00, 1283.55), respectively (Fig. 1B, $P < 0.001$). There were no significant differences of Δ BMI, Δ FPG, Δ 2-h PG and Δ HbA1c between the M1 and M2 subgroup [Δ BMI, 0.00 (-0.49, 0.50) vs. 0.17 (-0.31, 0.76); Δ FPG, -1.3 (-3.40, -0.76) vs. -1.49 (-3.47, -0.13); Δ 2-h PG, -3.32 (-6.02, -1.68) vs. -4.26 (-8.21, -2.63); Δ HbA1c, -0.55 (-1.03, -0.15) vs. -0.80 (-1.90, -0.45), all $P > 0.05$, Fig. 1C-F).

Spearman correlation coefficient was used to analyze the possible relationship between glycemic control parameters and results showed that Δ GDF15 was not correlated to Δ FPG, Δ 2-h PG and Δ HbA1c (all $P > 0.05$, Table 3). To further verify the relationship, analysis of covariance after adjustment for baseline HbA1c levels showed that Δ GDF15 was also not correlated to Δ FPG,

Δ 2-h PG and Δ HbA1c (Δ FPG, $P = 0.682$; Δ 2-h PG, $P = 0.704$; Δ HbA1c, $P = 0.725$).

Discussion

It has been reported that GDF15 was a promising biomarker for metformin treatment and could reflect the dosage of metformin treatment at the same time [10, 16]. In a nested case-control study, Natali et al. [17] found that in patients with diabetes mellitus, metformin treatment was associated with a 40% rise in serum GDF15 levels. Although these cross-sectional studies have focused on GDF15 and metformin, our study first investigated the change of serum GDF15 levels before and after metformin treatment in patients with type 2 diabetes mellitus. We found that compared with baseline levels, serum GDF15 levels increased about 35% after a 12-week metformin treatment in patients with type 2 diabetes mellitus. Moreover, our results showed that after acarbose treatment, serum GDF15 levels did not change. It is similar with previous studies that serum GDF15 levels were not associated with other hypoglycemia therapy [10, 17].

Although the increase of GDF15 levels was a unique characteristic of metformin treatment, the change of GDF15 in previous studies was discovered to be mainly

Table 2 Clinical characteristics of the participants of M1 and M2 subgroups

	M1 (N = 26)			M2 (N = 25)		
	Baseline	Endpoint	P	Baseline	Endpoint	P
Sex (male/female)	16/10	–	–	12/13	–	–
Age (year)	60.00 (55.00, 62.00)	–	–	62.00 (49.00, 67.00)	–	–
Diabetes duration (year)	14.00 (10.00, 17.00)	–	–	13.00 (10.00, 16.00)	–	–
Body weight (kg)	75.34 ± 10.15	75.10 ± 10.20	0.685	72.88 ± 10.35	72.14 ± 10.06	0.072
BMI (kg/m ²)	26.63 ± 3.10	26.55 ± 3.24	0.716	26.11 ± 2.50	25.85 ± 2.35	0.094
Waist circumference (cm)	91.44 ± 9.55	92.46 ± 7.65	0.473	90.76 ± 11.90	92.24 ± 11.46	0.243
SBP (mmHg)	137.00 ± 12.00	131.00 ± 15.00	0.092	138.00 ± 15.00	136.00 ± 16.00	0.608
DBP (mmHg)	80.00 ± 6.00	80.00 ± 7.00	0.980	82.00 ± 7.00	81.00 ± 8.00	0.305
TC (mmol/L)	4.80 ± 1.00	4.68 ± 1.10	0.587	5.14 ± 1.33	4.97 ± 1.02	0.510
TG (mmol/L)	1.90 (1.28, 3.03)	1.58 (1.07, 2.50)	0.041	1.26 (0.79, 1.82) [*]	1.55 (1.01, 1.94)	0.087
HDL-c (mmol/L)	1.04 (0.92, 1.21)	1.13 (0.89, 1.25)	0.096	1.14 (1.00, 1.54) [*]	1.22 (0.99, 1.35)	0.277
LDL-c (mmol/L)	2.62 ± 0.78	2.69 ± 0.93	0.683	3.17 ± 1.12	2.83 ± 0.72	0.121
FPG (mmol/L)	9.91 (9.08, 12.22)	8.18 (6.82, 10.36)	0.001	10.25 (8.49, 11.96)	8.28 (7.46, 9.61)	0.001
2-h PG (mmol/L)	18.74 (17.55, 21.06)	14.52 (12.67, 18.18)	< 0.001	20.36 (18.06, 22.72)	16.09 (14.64, 17.57)	< 0.001
HbA1c (%)	8.20 ± 0.70	7.50 ± 0.60	< 0.001	8.60 ± 0.90	7.60 ± 0.80	< 0.001
GDF15 (pg/mL)	983.05 (694.70, 1324.85)	1040.65 (853.75, 1333.93)	0.016	897.40 (769.90, 1171.30)	1559.70 (1247.35, 2416.00) ^{**}	< 0.001

Data are expressed as mean ± SD or median (interquartile range)

M1 subgroup, ΔGDF15 ≤ 338.50 pg/mL; M2 subgroup, ΔGDF15 > 338.50 pg/mL

Compared to M1 group: ^{*}, P < 0.05; ^{**}, P < 0.01

Abbreviations: BMI Body mass index, SBP Systolic blood pressure, DBP Diastolic blood pressure; TC Total cholesterol, TG Triglycerides, HDL-c High-density lipoprotein cholesterol, LDL-c Low-density lipoprotein cholesterol; FPG Fasting plasma glucose, 2-h PG 2-h postprandial plasma glucose, HbA1c Glycated hemoglobin A1c, GDF15 Growth differentiation factor 15

Table 3 Spearman correlation analysis of ΔGDF15 and the change of clinical parameters in MET group

	ΔGDF15	
	r	P
ΔFPG (mmol/L)	0.075	0.602
Δ2-h PG (mmol/L)	−0.131	0.361
ΔHbA1c (%)	−0.166	0.245

Abbreviations: GDF15 Growth differentiation factor 15, FPG Fasting plasma glucose, 2-h PG 2-h postprandial plasma glucose, HbA1c Glycated hemoglobin A1c

associated with weight loss so far [18]. A previous study focusing on people without diabetes mellitus revealed that metformin treatment was associated with significantly increased levels of circulation GDF15 with lost about 3.5% of body weight [12]. There still remains a paucity of information on the relationship between GDF15 and the glucose-lowering effect of metformin in patients with type 2 diabetes mellitus. The present study first found that the increase of serum GDF15 levels after metformin intervention was not related to the improvement of glycemic control parameters (ΔFPG, Δ2-h PG or ΔHbA1c) in patients with type 2 diabetes mellitus.

Our results also showed that serum GDF15 levels did not increase in nearly half of the subjects after a 12-week metformin treatment, while serum GDF15 levels of the other half increased approximately 70%. However, the changes of glycemic control parameters were similar in the two subgroups (divided according to the median of ΔGDF15), which further proved that the elevation of serum GDF15 levels was not directly associated with glucose metabolism improvement in patients with type 2 diabetes mellitus. Still, reasons for the differences of ΔGDF15 between these two subgroups after metformin intervention need further detailed investigation.

To be noted, body weight of the MET group did not change after the intervention. Possible reasons may be the features of participants in our study. Firstly, the participants included were mostly overweight, not obese. Moreover, the improvement of the glycemic control in MET group may have prevented the loss of nutrition and partly neutralized the weight-loss effect of metformin. Without weight changes, this study population was definitely a proper model to explore the underlying relationship between GDF15 and the glucose-lowering effect of metformin. Previous animal studies showed that overexpression of GDF15 levels in mice led to decreased food intake, body weight and improved

glucose metabolism [19, 20]. Taking the results from our study into consideration, the improved glucose metabolism in animal studies may be secondary to the decreased food intake and body weight.

There are some limitations of the present study. First, this was a pilot study, so the sample size was relatively small. In addition, we did not evaluate GDF15 levels after the standard meal. Therefore, further large-scale studies with more intense investigation on the change of serum GDF15 levels are needed to precisely elucidate the relationship among GDF15, glycemic control and metformin treatment.

In conclusion, the increase of serum GDF15 levels was an indicator of metformin treatment. However, the increase was not associated with the improvement of glycemic control in patients with type 2 diabetes mellitus.

Abbreviations

GDF15: Growth differentiation factor 15; BMI: Body mass index; HbA1c: Glycated hemoglobin A1c; FPG: Fasting plasma glucose; 2-h PG: 2-h postprandial plasma glucose; SBP: Systolic blood pressure; DBP: Diastolic blood pressure; TC: Total cholesterol; TG: Triglycerides; HDL-c: High-density lipoprotein cholesterol; LDL-c: Low-density lipoprotein cholesterol.

Acknowledgements

We would like to thank all the involved clinicians, nurses, and technicians for their contribution to the study. We are grateful to all the participants for their dedication in data collection and laboratory measurements.

Authors' contributions

J.Z., X.M. and J.Y. designed the study. F.G. and C.L. contributed to data analysis and writing the paper. Y.W. helped with the measurement of growth differentiation factor 15. F.G., W.L. and X.M. contributed to data collection. J. L. J. Z. J.Y. and X.M. contributed to interpretation of data and revision of the manuscript. All authors have read and approved the final manuscript. J.Y. and X.M. are the guarantors of this work and had full access to all the data in the study and take responsibility for the integrity of the data and the accuracy of the data analysis. All authors have read and approved the final manuscript.

Funding

This work was funded by the Shanghai Municipal Commission of Health and Family Planning General Program (201840232), Shanghai Municipal Education Commission—Gaofeng Clinical Medicine Grant Support (20172025, 20161430), National Natural Science Foundation of China (82070885), and Shanghai Municipal Key Clinical Specialty. The funding body provided financial support for the present study and supervised the study design, conduct, and data collection and analysis.

Availability of data and materials

The datasets generated during and/or analyzed during the current study are not publicly available but are available from the corresponding author on reasonable request.

Declarations

Ethics approval and consent to participate

The study was approved by the Ethics Committee of Shanghai Jiao Tong University Affiliated Sixth People's Hospital and was in accordance with the 1964 Declaration of Helsinki. Informed consent was obtained from each subject at the beginning of the study.

Consent for publication

Not applicable.

Competing interests

No potential conflicts of interest relevant to this article were reported.

Received: 17 October 2021 Accepted: 11 October 2022

Published online: 22 October 2022

References

- Jia W, Wang J, Zhu D, et al. Standards of medical care for type 2 diabetes in China 2019. *Diabetes Metab Res Rev*. 2019;35(6):e3158.
- Marx N, Davies MJ, Grant PJ, et al. Guideline recommendations and the positioning of newer drugs in type 2 diabetes care. *Lancet Diabetes Endocrinol*. 2021;9(1):46–52.
- Doyle-Delgado K, Chamberlain JJ, Shubrook JH, et al. Pharmacologic approaches to glycemic treatment of type 2 diabetes: synopsis of the 2020 American Diabetes Association's Standards of Medical Care in Diabetes Clinical Guideline. *Ann Intern Med*. 2020;173(10):813–21.
- Rena G, Hardie DG, Pearson ER. The mechanisms of action of metformin. *Diabetologia*. 2017;60(9):1577–85.
- Yerevanian A, Soukas AA. Metformin: mechanisms in human obesity and weight loss. *Curr Obes Rep*. 2019;8(2):156–64.
- Cree-Green M, Bergman BC, Cengiz E, et al. Metformin improves peripheral insulin sensitivity in youth with type 1 diabetes. *J Clin Endocrinol Metab*. 2019;104(8):3265–78.
- Adela R, Banerjee SK. GDF-15 as a target and biomarker for diabetes and cardiovascular diseases: a translational prospective. *J Diabetes Res*. 2015;2015:490842.
- Patel S, Alvarez-Guaita A, Melvin A, et al. GDF15 provides an endocrine signal of nutritional stress in mice and humans. *Cell Metab*. 2019;29(3):707–18.e8.
- Desmedt S, Desmedt V, De Vos L, et al. Growth differentiation factor 15: a novel biomarker with high clinical potential. *Crit Rev Clin Lab Sci*. 2019;56(5):333–50.
- Breit SN, Brown DA, Tsai VW. The GDF15-GFRAL pathway in health and metabolic disease: friend or foe? *Annu Rev Physiol*. 2021;83:127–51.
- Berezin AE. Diabetes mellitus related biomarker: the predictive role of growth-differentiation factor-15. *Diabetes Metab Syndr*. 2016;10(1 Suppl 1):S154–7.
- Gerstein HC, Pare G, Hess S, et al. Growth differentiation factor 15 as a novel biomarker for metformin. *Diabetes Care*. 2017;40(2):280–3.
- Coll AP, Chen M, Taskar P, et al. GDF15 mediates the effects of metformin on body weight and energy balance. *Nature*. 2020;578(7795):444–8.
- Cai L, Li C, Wang Y, et al. Increased serum GDF15 related to improvement in metabolism by lifestyle intervention among young overweight and obese adults. *Diabetes Metab Syndr Obes*. 2021;14:1195–202.
- Gao F, Ma X, Peng J, et al. The effect of Acarbose on glycemic variability in patients with type 2 diabetes mellitus using premixed insulin compared to metformin (AIM): an open-label randomized trial. *Diabetes Technol Ther*. 2020;22(4):256–64.
- Day EA, Ford RJ, Smith BK, et al. Metformin-induced increases in GDF15 are important for suppressing appetite and promoting weight loss. *Nat Metab*. 2019;1(12):1202–8.
- Natali A, Nesti L, Venturi E, et al. Metformin is the key factor in elevated plasma growth differentiation factor-15 levels in type 2 diabetes: a nested, case-control study. *Diabetes Obes Metab*. 2019;21(2):412–6.
- Wang D, Day EA, Townsend LK, et al. GDF15: emerging biology and therapeutic applications for obesity and cardiometabolic disease. *Nat Rev Endocrinol*. 2021;17(10):592–607.
- Xiong Y, Walker K, Min X, et al. Long-acting MIC-1/GDF15 molecules to treat obesity: evidence from mice to monkeys. *Sci Transl Med*. 2017;9(412):eaan8732.
- Macia L, Tsai VW, Nguyen AD, et al. Macrophage inhibitory cytokine 1 (MIC-1/GDF15) decreases food intake, body weight and improves glucose tolerance in mice on normal & obesogenic diets. *Plos One*. 2012;7(4):e34868.

Publisher's Note

Springer Nature remains neutral with regard to jurisdictional claims in published maps and institutional affiliations.