

OPEN

Theileria parasites subvert E2F signaling to stimulate leukocyte proliferation

Kyle Tretina^{1,2}, Malak Haidar^{3,4}, Sally A. Madsen-Bouterse⁵, Takaya Sakura^{3,4}, Sara Mfarrej⁶, Lindsay Fry^{5,7}, Marie Chaussepied^{3,4,8}, Arnab Pain⁶, Donald P. Knowles⁵, Vishvanath M. Nene⁹, Doron Ginsberg^{8,10}, Claudia A. Daubenberger^{11,12}, Richard P. Bishop⁵, Gordon Langsley^{3,4} & Joana C. Silva^{1,13*}

Intracellular pathogens have evolved intricate mechanisms to subvert host cell signaling pathways and ensure their own propagation. A lineage of the protozoan parasite genus *Theileria* infects bovine leukocytes and induces their uncontrolled proliferation causing a leukemia-like disease. Given the importance of E2F transcription factors in mammalian cell cycle regulation, we investigated the role of E2F signaling in *Theileria*-induced host cell proliferation. Using comparative genomics and surface plasmon resonance, we identified parasite-derived peptides that have the sequence-specific ability to increase E2F signaling by binding E2F negative regulator Retinoblastoma-1 (RB). Using these peptides as a tool to probe host E2F signaling, we show that the disruption of RB complexes *ex vivo* leads to activation of E2F-driven transcription and increased leukocyte proliferation in an infection-dependent manner. This result is consistent with existing models and, together, they support a critical role of E2F signaling for *Theileria*-induced host cell proliferation, and its potential direct manipulation by one or more parasite proteins.

Theileria parva and *Theileria annulata* are tick-transmitted, protozoan parasites of cattle that cause hundreds of millions of dollars of economic losses every year in large parts of southern Europe, Africa, and southern Asia. These pathogens are notable among protozoan parasites in the ability of the schizont life-cycle stage to induce cancer-like phenotypes in host leukocytes. Induction of proliferation and dissemination of infected host cells are believed to be important aspects of *Theileria*-induced pathogenesis^{1,2}. Despite a strong host immune response to the parasites³, infection can result in the death of a high proportion of infected animals⁴. While there has been considerable research into host signaling pathways affected during infection, so far only one parasite molecule has been shown to be involved in *Theileria*-induced transformation of host leukocytes¹. This protein, a prolyl isomerase secreted by *T. parva* and *T. annulata* into the leukocyte cytosol, modifies host oncogenic proteins critical for host cell transformation⁵. Notably, the host ortholog of this parasite protein, PIN1⁶, as well as several other host genes that are critical for transformation⁷ are dependent on the activation of the host's E2F cell-cycle regulators and transcription factors. E2F proteins have been previously postulated to be activated during *Theileria* infection through IL-2 and PI3K-dependent PKB/AKT signaling⁷. More recently, E2F-1, E2F2, and E2F3 were shown to be highly expressed, but slightly down-regulated at the transcript level in *Theileria*-transformed cells compared to

¹Institute for Genome Sciences, University of Maryland School of Medicine, Baltimore, MD, 21201, USA. ²Program in Molecular Microbiology and Immunology, University of Maryland School of Medicine, Baltimore, MD, 21201, USA. ³Laboratoire de Biologie Comparative des Apicomplexes, Faculté de Médecine, Université Paris Descartes, Sorbonne, Paris Cité, France. ⁴Inserm U1016, Cnrs UMR8104, Cochin Institute, Paris, 75014, France. ⁵Department of Veterinary Microbiology and Pathology, Washington State University, Pullman, WA, 99164-7040, USA. ⁶Pathogen Genomics Laboratory, Biological and Environmental Sciences and Engineering (BESE) Division, King Abdullah University of Science and Technology (KAUST), Thuwal, 23955-6900, Kingdom of Saudi Arabia. ⁷Animal Disease Research Unit, Agricultural Research Service, USDA, Pullman, WA, 99164-7030, USA. ⁸Weizmann Institute of Science, Molecular Cell Biology Department, PO Box 26, Rehovot, 76100, Israel. ⁹International Livestock Research Institute, Nairobi, 00100, Kenya. ¹⁰The Mina and Everard Goodman Faculty of Life Sciences Bar-Ilan University, Ramat-Gan, 52900, Israel. ¹¹Swiss Tropical and Public Health Institute, Basel, Switzerland. ¹²University of Basel, Basel, Switzerland. ¹³Department of Microbiology and Immunology, University of Maryland School of Medicine, Baltimore, MD, 21201, USA. *email: jcsilva@som.umaryland.edu

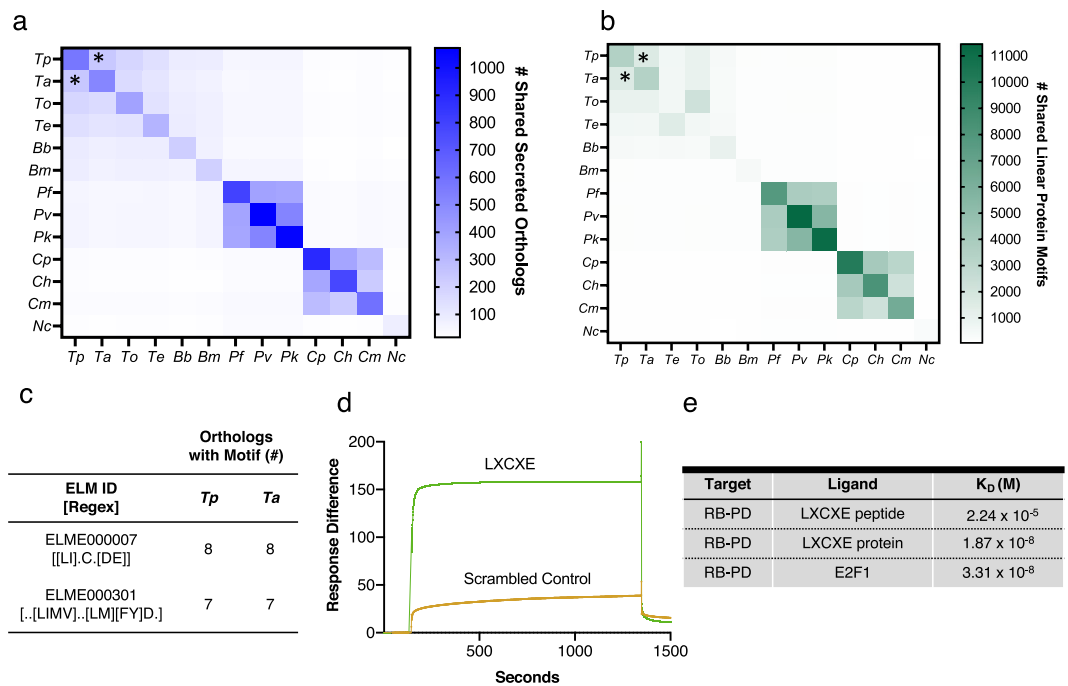


Figure 1. Comparative genomics identified 15 *Theileria* parasite proteins with the potential to alter host E2F signaling, one of which can bind Retinoblastoma-1 pocket domain. **(a)** A heatmap of orthologous proteins that are shared by each pair of apicomplexan parasites used in this study. **(b)** A heatmap of short eukaryotic linear motifs in secreted proteins that are shared by pairs of apicomplexan parasites used in this study. **(c)** 15 *Theileria* secreted proteins have short linear motifs that are present in the Eukaryotic Linear Motif (ELM) database and are predicted to interact with host Retinoblastoma-1 (RB). **(d)** A kinetic surface plasmon resonance binding curve (sensorgram) showing that peptides derived from one of the proteins in **(c)** binds RB in a sequence-specific manner, as shown by surface plasmon resonance. **(e)** Listed are estimated dissociation constants for the LXCXE peptide (same as **(d)**), a full-length *Theileria* protein containing that peptide (TpMuguga02_00667; TpGcpE), as well as for host E2F1, binding to the RB pocket domain.

uninfected controls⁸; however, the functional role of E2F signaling in *Theileria*-induced host cell proliferation has not yet been thoroughly characterized.

Here, we leveraged a comparative genomics approach to predict parasite protein sequences that are potentially involved in the *Theileria*-induced transformation of host leukocytes. We discovered a peptide derived from a parasite protein that has the sequence-specific and infection-specific ability to increase host E2F signaling by binding to the Retinoblastoma-1 (RB), a negative regulator of E2F signaling, and thereby contributing to host cell hyper-proliferation. Hence, cumulative evidence to date demonstrates the critical role of the RB/E2F signaling axis in *Theileria* host cell proliferation, and suggests a mechanism by which one or more parasite proteins could manipulate E2F signaling.

Results

We developed a bioinformatics pipeline to perform a comprehensive prediction of potential host-transforming, short linear motifs in *Theileria* proteins. This pipeline was based on the rationale that such peptide motifs have all of the following attributes: (i) are in proteins predicted to be exposed to the host (i.e. secreted), (ii) are present in host-transforming *Theileria* species (*T. parva* and *T. annulata*), and (iii) are found in proteins that are expressed in the schizont life-cycle stage based on RNA-seq data. In order to reduce false positives, we also imposed a strict criterion that the protein motif be absent in the protein sequences of orthologs found in other apicomplexan genomes, including non-transforming *Theileria* (*T. orientalis* and *T. equi*). While only 400 protein orthologs were unique to *T. parva* and *T. annulata*, a total of 109 protein motifs, present in these 400 proteins, satisfied the required criteria (Fig. 1a,b; Supplementary Dataset). This list is critically dependent on a recently generated *T. parva* genome annotation, since the coding sequences of 101 of these 400 genes were altered in the new annotation (Tretina *et al.*, submitted)⁹.

Interestingly, we identified 15 *T. parva* proteins that contain a short linear motif predicted to interact with the well-studied host tumor suppressor Retinoblastoma-1 protein (RB) (Fig. 1c, Supplementary Table 1). Along with p107 and p130, RB is a pocket family protein that plays a critical role in mammalian cell cycle regulation by inhibiting E2F transcription factor activity, an important regulator of cell proliferation and survival¹⁰. The central RB pocket domain is highly conserved between humans and bovids (Supplementary Fig. 1) and has two significant binding sites: a) the interface of the A and B cyclin folds, which binds to the E2F transactivation domain LXXLFD motif, and b) a three-helix cleft of the B cyclin fold, which binds to chromatin-modifying proteins containing an LXCXE motif, such as histone deacetylase 1 (HDAC1)¹⁰. Out of our 15 predicted *T. parva* RB-binding proteins, eight had the LXCXE motif, and seven had the LXXLFD motif (Supplementary Table 1).

Since the proliferation of *T. parva*-infected host cells is thought to be critical for the pathogenesis of infection, we investigated whether synthesized peptides, each 9 to 19 amino acids long and containing these 15 *T. parva* motifs, could bind to RB (Supplementary Table 1). Surface plasmon resonance (SPR) was used to screen these peptides for specific RB1 pocket domain-binding activity. Recombinant, purified RB pocket domain was coupled to the surface of the sensor chip, and purified peptides were introduced at various concentrations to quantify kinetics if response curves indicated a detectable protein-protein interaction. Sequence-scrambled peptides were used as negative controls to exclude false-positive signals. This approach led to the discovery of two peptides that bind RB in a sequence-specific fashion, one with an LXCXE motif (in TpMuguga_02g00667, TpGcpE, Fig. 1d,e), and one with an LXXLFD motif (in TpMuguga_02g02355). SPR kinetics assays revealed that full-length, recombinant TpGcpE protein also binds the RB pocket domain with nanomolar affinity (18.7 nM) (Fig. 1e).

The discovery of these peptides led us to investigate the particular RB/E2F signaling components in *Theileria*-infected cells. Eight E2F transcription factor genes have been identified in mammals, which can be divided into two groups: activators (E2F-1, E2F-2, E2F-3a), which can bind RB, and repressors (e.g. E2F-3b, E2F-4, E2F-5), which can bind RB, p107 and p130. The balance between the activator and repressor E2Fs seems to be primarily controlled by the phosphorylation status of the associated pocket proteins to which they bind. E2F interactions with the Dimerization Partner (DP) ligands are also important for regulating E2F transcription factor activity¹¹. We used Western blot to compare the levels of RB family, E2F, and DP-1 protein between *T. parva*-transformed cells that were left untreated with those treated with buparvaquone to kill the parasite and induce an arrest in host cell proliferation. By comparing expression levels between the buparvaquone-treated and untreated groups, we can determine parasite-dependent changes in the expression levels of these proteins. We found that the *T. parva*-transformed B cell line TpMD409.B2 expresses RB, p130, E2F-1, E2F-3, E2F-4, DP-1 (Fig. 2a). It is noteworthy that phosphorylated RB (pRB) and p130 migrate faster in parasite-killed TpMD409.B2 cells than in untreated cells (Fig. 2a). These faster migrating bands likely correspond to hypophosphorylated, proliferation-suppressive forms of RB and p130, at 24 h and 48 h after treatment with buparvaquone. Interestingly, after 48 h of treatment, but not 24 h, E2F-1 and E2F-3 protein levels decrease, a slower-migrating DP-1 band increases, but E2F-4 levels remain unaltered (Fig. 2a). This indicates that, in the presence of live intracellular *T. parva* parasites, host cells express higher E2F-1 and E2F-3 levels, DP-1 has decreased post-translational modifications, and RB and p130 are hyper-phosphorylated. Furthermore, the binding of E2F to DNA appears to increase in the presence of live parasites, since treatment with the parasitocidal drug buparvaquone over 24 h and 48 h is accompanied by an overall decrease in E2F DNA binding activity, as well as by an increase in complexes migrating at slow and intermediate speed bound to an E2F-dependent promoter, which likely represent E2F/RB repressor complexes (Fig. 2b). Proliferation was also confirmed to be dependent on the parasite by BrdU incorporation of untreated and buparvaquone-treated *T. parva* infected cells (Fig. 2c), as has been shown previously⁸.

We also found that *T. parva*-transformed B cells, TpMD409.B2 cells, contain significant levels of E2F transcriptional activity, since cells transfected with an E2F-driven luciferase reporter plasmid (E2F-luc) exhibited a 200% increase in luciferase activity compared to cells transfected with a plasmid containing a mutated E2F binding site (mutated) (Fig. 3d). Since no system for genetic manipulation is available yet for intracellular *Theileria*, we instead incubated *T. parva*- and *T. annulata*-infected bovine leukocytes (transfected with a luciferase reporter regulated from an E2F promoter) with synthesized peptides containing the RB-binding LXCXE motif, or a mutated LXNXE negative control, linked to a cell-penetrating peptide. If the LXCXE-containing peptide can regulate E2F activity in a sequence-specific manner, we would expect it to increase E2F activity, and that this effect would be reduced or abrogated in the mutated LXNXE peptide-treated group. As expected, the LXCXE peptide increased E2F activity in *T. parva*-infected B cells, as well as in *T. annulata*-infected B cells and macrophages. In contrast, the mutated LXNXE peptide did not show the same reporter activity as the LXCXE peptide (Fig. 3b,d,e), providing direct functional evidence that the parasite-derived LXCXE motif can induce E2F activity in *Theileria*-infected leukocytes.

Since the LXCXE peptide can induce E2F activity, we investigated whether it could, on its own, increase bovine leukocyte proliferation. To extend our observations to *T. annulata*-infected leukocytes, we incubated *T. annulata*-infected B cells with WT or mutated LXNXE peptides and counted cell numbers at 24 h and 48 h. The addition of these peptides had no effect on cell viability in any of the experimental groups (data not shown). Importantly, only the LXCXE peptide induced a significant increase in proliferation of *T. annulata*-infected B cells as well as (to a much lesser extent) of uninfected, but immortalized controls (Fig. 3b). Interestingly, an E2F inhibitor (HLM006474) specifically reduced the proliferation of *T. annulata*-infected TBL20 cells and not uninfected BL20 cells (Fig. 3c), an effect that was not dependent on cell death (data not shown). These data demonstrate that RB/E2F interactions significantly regulate *Theileria*-driven host leukocyte proliferation.

In order to map the site of the interaction of the LXCXE motif with the RB pocket domain, we used SPR to test the ability of full-length TpGcpE protein to compete with two proteins that have known, well-characterized interactions with the RB pocket domain, E2F1 and HDAC1. The RB pocket domain was coupled to the surface of the sensor chip, and purified, recombinant, full-length TpGcpE was introduced into the flow channel to bind the RB pocket domain to saturation; then either purified, recombinant E2F-1 or HDAC1 was added to the channel and the response curve recorded to determine if they competed with TpGcpE binding. We found that E2F-1 does not compete with full-length TpGcpE for binding to the RB pocket domain (Fig. 4a,b). However, TpGcpE does compete with HDAC1 for RB (Fig. 4c,d), despite a > 4.5-fold higher concentration of the latter, suggesting that the full-length TpGcpE can compete with endogenous chromatin-modifying enzymes like HDAC1 for binding to the LXCXE-binding cleft of the RB pocket domain. We also found that RB interacts with HDAC1 in uninfected cells, and to a lesser extent, in infected cells, as detected by co-immunoprecipitation (Fig. 4b,e,f). This could be partially explained by competition of HDAC1 with LXCXE-containing proteins, as total RB and HDAC1 levels do not seem to be altered by the presence of *T. parva* (Fig. 4e).

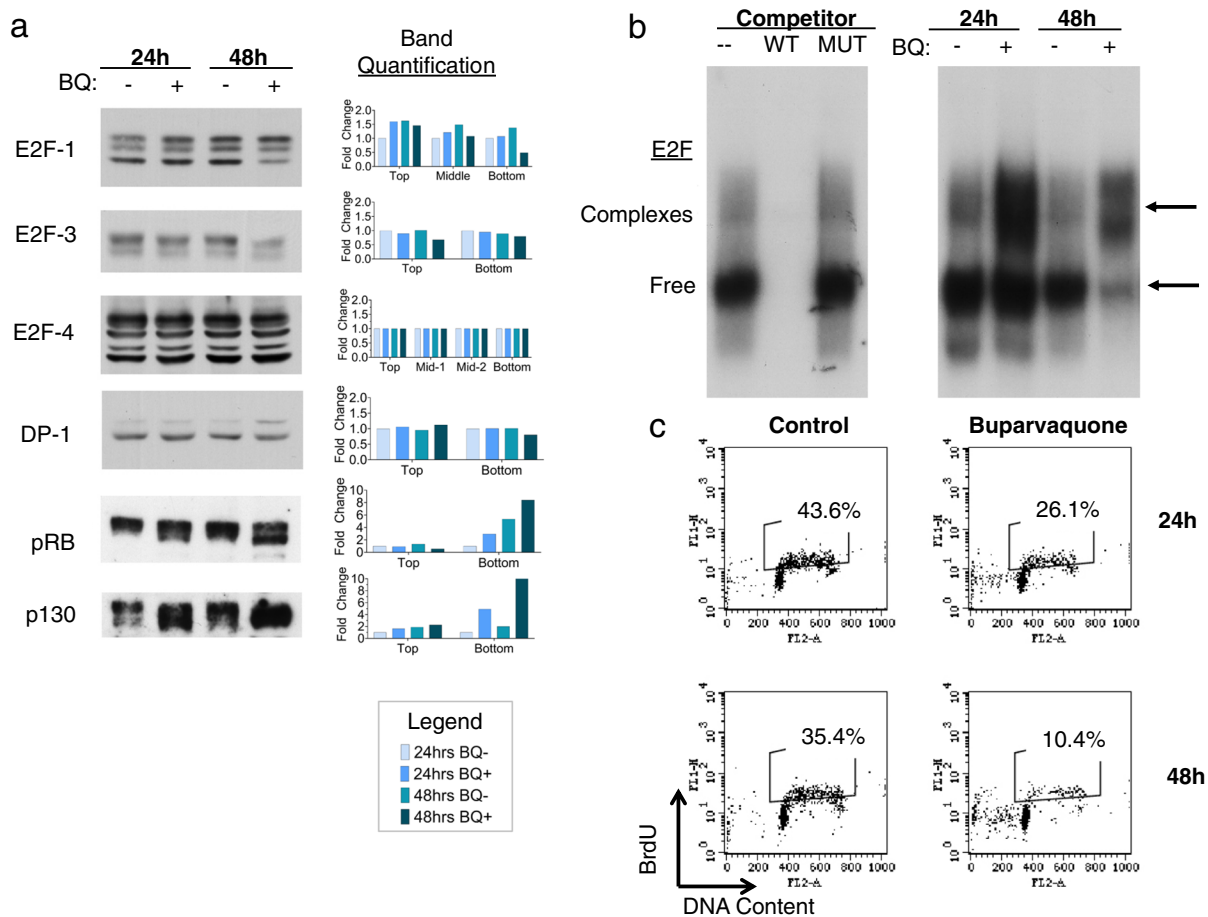


Figure 2. RB/E2F signaling is activated by *Theileria* parasites. **(a)** Western blot analysis (left) of E2F-1, E2F-3, E2F-4, DP-1, pRB, and p130 expression in TpMD409B.2 cells, either left untreated (–), or treated (+) for 24 h and 48 h with buparvaquone (BQ), including band intensity quantification (right). Shown are representatives of three independent experiments. **(b)** E2F DNA binding activity in TpMD409B.2 cells was assayed by EMSA using γ P32-labeled double-stranded oligonucleotide spanning E2F binding sites from the *dhfr* gene promoter. Left panel, nuclear extracts from TpMD409B.2 cells were incubated with γ P32-labeled probe in absence or presence of a 100 fold molar excess of unlabeled wild type (WT), or mutated (MUT) double-stranded oligonucleotide. Binding reactions were resolved by non-denaturing polyacrylamide gel, which was processed afterwards for autoradiography. Right panel, EMSA analysis of E2F DNA binding activity in nuclear extracts from untreated, proliferating TpMD409B.2 cells (–) and TpMD409B.2 cells treated for 24 and 48 h with the parasitocidal drug buparvaquone (+). Arrows indicate E2F in complex with RB family proteins (Complexes) or free E2F protein (Free). **(c)** Flow cytometric analysis of BrdU incorporation and DNA content in TpMD409B.2 cells, either left untreated (control), or treated with buparvaquone for 24 h and 48 h. Shown is a representative of three independent experiments.

Discussion

RB binds and represses E2F transcription factor family proteins in non-proliferating cells, in part by recruiting LXCXE motif-containing chromatin modifiers to E2F-dependent promoters. Mitogenic signals lead to an increase in cellular cyclin-dependent kinase activity, which phosphorylates RB and thereby inactivates RB-dependent E2F repression by dissociating the RB-E2F complex. Interestingly, the RB LXCXE-binding cleft is also critical for repressing transcription from the cyclin E and cyclin A promoters. Since cyclin E/A-CDK2 complexes can phosphorylate and inactivate RB, this provides an important positive feedback signal for proliferation¹². Free E2F proteins form heterodimers with E2F dimerization partner proteins DP-1 or DP-2 to form a functional transcription factor that regulates cell proliferation and survival^{10,13}.

While full-length *TpGcpE* was measured to have very strong binding to host RB by SPR, the LXCXE-containing peptide derived from *TpGcpE* bound with lower affinity than the full-length protein (Fig. 1). This is indicative of the growing consensus that although the LXCXE motif can be used to identify potential RB-interaction partners, structural studies with both pathogen-derived and mammalian host-derived proteins indicate that there are other important determinants of high-affinity interactions with the pocket cleft¹⁴. For example, out of the eight LXCXE motif-containing peptides testing in this study, only one bound RB. This is supported by other studies finding that several proteins that interact with this region of RB do not contain an obvious LXCXE motif^{15,16}, suggesting that RB interactions in the LXCXE-binding cleft are more complicated than currently understood from structural studies.

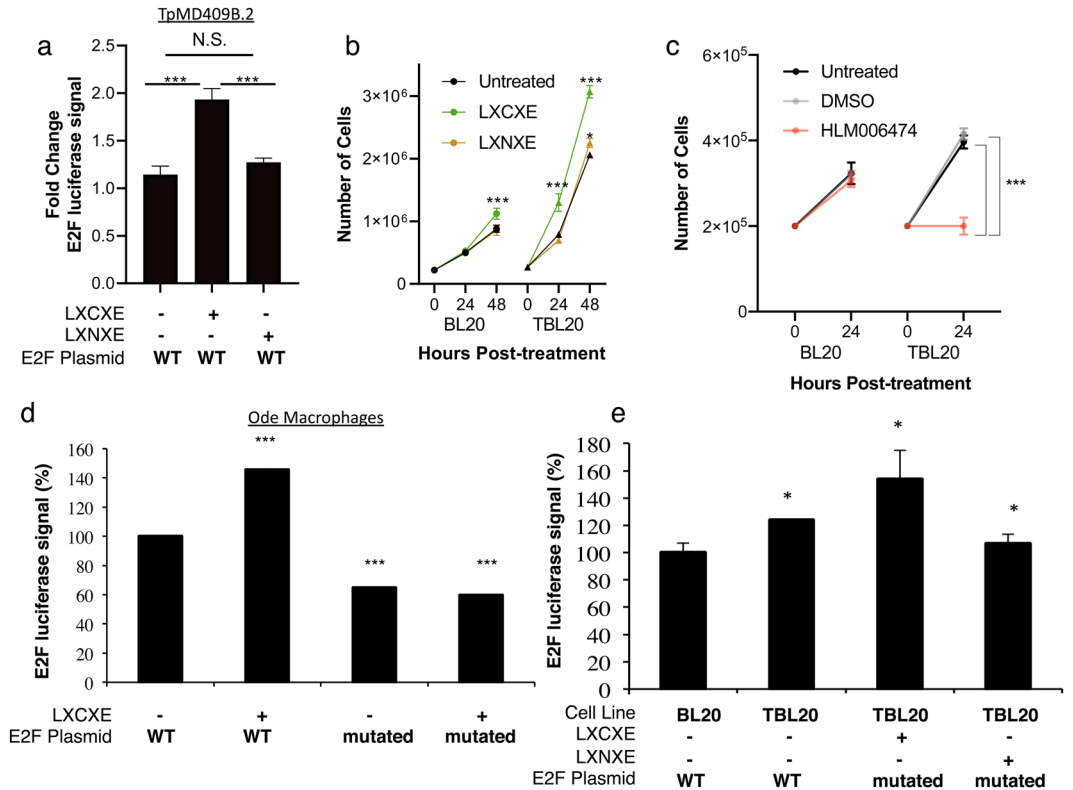


Figure 3. Sequence-specific disruption of RB/E2F signaling with cell permeating peptides reveals the active role of E2F signaling during *Theileria* infection. **(a)** TpMD409B.2 cells were transfected with E2F-luc (WT = wild-type E2F binding construct), or mutated E2F-luc constructs (labeled ‘mutated’) together with a CMV-lacZ plasmid to normalize for transfection efficiency. Luciferase and β -galactosidase activities were measured 24 hrs after transfection. E2F-luc relative luciferase activity normalized to mE2F-luc. Shown is the average of 3 independent experiments with standard deviation. BL20 or TBL20 cells were treated with **(b)** $1\mu\text{M}$ of penetrating peptides (VKKKKIKREIKIYIEEVFTPLVLKCKELK-K(FITC)) containing the *TpGcpE* LXCXE motif, or an LNXE control (VKKKKIKREIKIYIEEVFTPLVLKKNKELK-K(FITC)) or **(c)** E2F inhibitor or DMSO control, and then counted by hemacytometer after the indicated timepoints. Shown is the average of 3 independent experiments with standard deviation. Then, either **(d)** virulent *Ode T. annulata*-transformed macrophages, or **(e)** BL20/TBL20 *T. annulata*-transformed cells were transfected with E2F-luc plasmid (or mutated E2F-luc as in **(c)**) and incubated for 24 hrs at 37°C . Then, cells were treated with penetrating peptides as in **(b)** for 2 hrs and luciferase activity was quantified. Data shown are representative of three independent experiments done with biological duplicates, with mean \pm standard deviation (**P*-value < 0.05 compared to untreated; **P*-value < 0.05 compared to its respective BL20 control).

While *TpGcpE* was measured to have very strong binding to host RB by SPR (Fig. 1), immunofluorescence imaging with a polyclonal antibody (Supplementary Fig. 2) found very little signal outside of the parasite co-localizing with host RB. There can be a few alternative, non-competing explanations for our limited ability to detect GcpE in the host cell cytosol: (a) the signal peptide in GcpE is also predicted to contain a motif targeting it to the apicoplast (a chloroplast-like organelle specific of the Apicomplexa), suggesting that only small amounts of GcpE remain in the host cell cytosol, and at levels below antibody detection; (b) during host cell division the multinucleated macroschizont is partitioned into new daughter host cells and enough GcpE gets released into the cytosol to sustain E2F activation; or (c) antagonism of the RB/HDAC1 binding by *Theileria* parasites results from competition with more than one parasite-derived motif, since we identified 15 *T. parva* proteins predicted to interact with RB, where eight had the LXCXE motif and seven had the LXXLFD motif. Moreover, SPR demonstrated that the LXCXE motif (in *TpMuguga_02g00667*, *TpGcpE*), and the LXXLFD motif (in *TpMuguga_02g02355*) bound the RB pocket domain with nanomolar affinity. Examining all 15 proteins for their presence in the host cell cytosol and eventual interaction with RB will be necessary to test hypothesis (c). It should also be noted that the parasite marker used for staining the schizont (p104), is secreted by the parasite and then subsequently localizes to the parasite surface, suggesting that this staining may illuminate more than just the parasite intracellular compartment. However, there is some weak GcpE staining outside of the p104-stained regions, indicating that some GcpE may localize to the host nucleus.

Our demonstration that penetrating peptides linked to the LXCXE motif in GcpE can block RB-HDAC1 binding, activate E2F-driven transcription and promote infected leukocyte proliferation, argues that targeting the RB/E2F signaling pathway could lead to novel chemotherapeutics against *T. annulata*-induced pathogenesis. For example, drugs have recently been developed to prevent binding of LXCXE motif-containing HPV E7 protein to

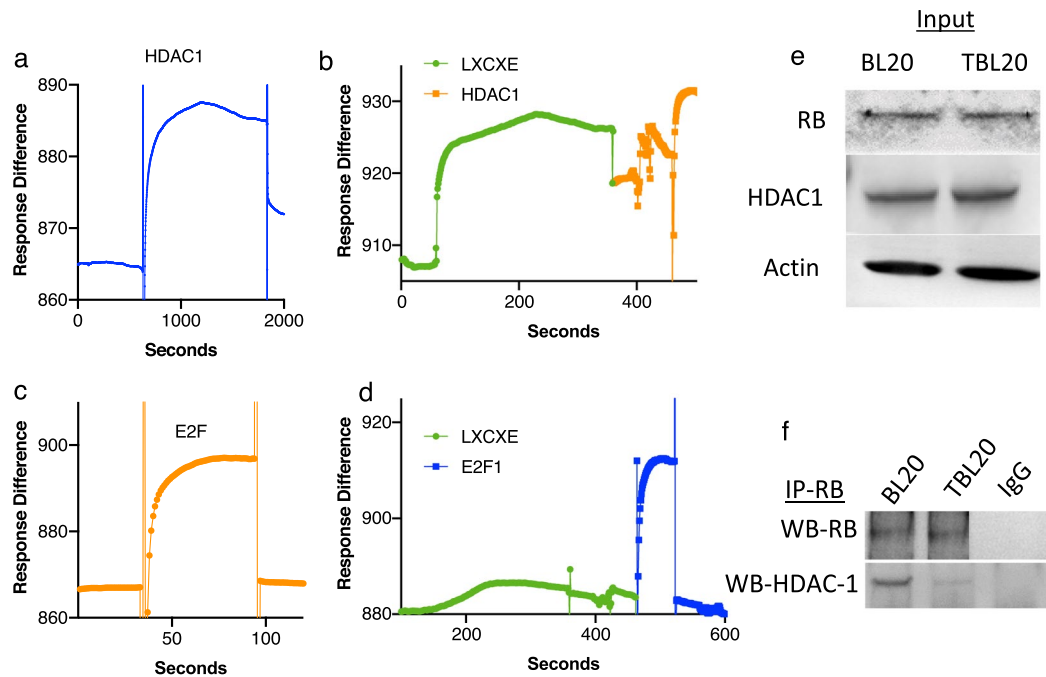


Figure 4. An LXCXE motif-containing protein disrupts RB interactions with negative epigenetic regulators of E2F signaling, but not RB-E2F interactions. **(a)** A kinetic surface plasmon resonance binding curve (sensorgram) of full-length HDAC1 to the RB pocket domain is shown. **(b)** Kinetic binding curve of full-length HDAC1 in competition with full-length *TpMuguga02_00667* (*TpGcpE*). **(c)** A sensorgram of full-length E2F1 to the RB pocket domain is shown. **(d)** Kinetic binding curve of full-length E2F1 in competition with full-length *TpMuguga02_00667*. **(e)** Western blot analysis of RB and HDAC1 in BL20 and TBL20 cells. **(f)** Co-immunoprecipitation of RB and HDAC1 in RB immunoprecipitates. Shown is a representative of three independent experiments.

host RB and are selectively cytopathic to HPV-infected cells¹⁷. In fact, the E2F inhibitor HLM0006474 was able to specifically inhibit the proliferation of *T. annulata*-infected, but not uninfected bovine B cell lines (Fig. 3c), indicating that E2F signaling could be a viable target of chemotherapeutic intervention for this infection. Since *T. parva* and *T. annulata* bind to their host's mitotic spindle and divide in synchrony with the host leukocytes¹⁸, host proliferation is intricately linked to parasite proliferation. This unique mechanism of parasite proliferation also provides the parasite with immune protection, as it avoids parasite egress from the host cell and exposure to the host immune response. We have established that uncontrolled proliferation of *Theileria*-transformed leukocytes can be achieved through modulation of RB/E2F signaling, and that *TpGcpE* has the potential to alter those interactions. Conclusive demonstration that specific *Theileria* proteins manipulate host RB/E2F signaling *in vivo* awaits future studies.

Methods

Bioinformatic analyses. *Comparative genomics.* Jaccard-filtered eukaryotic clusters of orthologous genes (KOGs) were generated as described previously¹⁹, using the following genomes from EuPathDB (August 25th, 2014)²⁰: *Babesia bovis* T2Bo, *Cryptosporidium hominis* TU502, *Cryptosporidium muris* RN66, *Cryptosporidium parvu*, Iowa II, *Neospora caninum* Liverpool, *Plasmodium falciparum* 3D7, *Plasmodium knowlesi* strain H, *Plasmodium vivax* Sal-1, *Theileria annulata* strain Ankara, *Theileria equi* strain WA, and *Theileria orientalis* strain Shintoku. Also used for creating the KOGs were the updated *Theileria parva* strain Muguga annotation and an updated *Babesia microti* RI annotation recently completed by our group²¹. Localization predictions were made with TargetP²², transmembrane domain predictions with TMHMM²³, GPI predictions were made with GPI-SOM²⁴, all using the default parameters. The entire ELM database was downloaded from <http://elm.eu.org/> and custom scripts were used to search the proteome of each Apicomplexan in the Sybil database using regular expressions in Python and a *p*-value cutoff of 0.001.

Surface plasmon resonance experiments. *Immobilization of human RB1 protein to CM5 chip.* *Surface preparation.* Binding reactions were done in HBS-EP buffer from Biacore (Biacore Inc., New Jersey), containing 10 mM Hepes, 150 mM NaCl, 3 mM EDTA, and 0.05% (v/v) surfactant p20, pH 7.4, filtered (0.2 μm) and degassed before use. Protein human Retinoblastoma-1 (LDBiopharma HTF-1035) was created on the surface of a Biacore CM5 sensor chips by direct immobilization. The carboxymethyl-dextran surface of the chip (flow cell 2, 3 and 4) were activated with a 35 μl injection of a mixture of 0.1 M NHS and 0.1 M EDC in water. An aliquot of 100 μl of 10 μg/ml dilution of human Retinoblastoma-1 protein in 10 mM sodium acetate, pH 4.5 was injected into flow cell-2 of CM5 chip to get the levels of 2000 resonance units (RU) for the immobilization. The remaining

NHS-ester active sites in the dextran surface flow cell-2 was blocked with 35 μ l of 1 M ethanolamine, pH 8.2 and washed at a high flow rate, 100 μ l per minute, with one pulse of 100 μ l of HBS-P buffer, pH 7.4. The flow cell-1 of same CM5 chip was used as reference (activated with a 35 μ l injection of a mixture of 0.1 M NHS and 0.1 M EDC in water and blocked with 35 μ l of 1 M ethanolamine, pH 8.2).

Kinetics analysis of binding. To minimize mass transport effects, the binding analyses were performed at flow rate of 30 μ l per minute at 25 °C. The analytes (60 μ l each, 0–25 μ M in HBS-EP buffer with 0.05% P20) were injected into flow cell and the association of analyte and ligand were recorded respectively by surface plasmon resonance (SPR) with a Biacore T200 (Biacore, Inc., New Jersey). After this, the surface was washed with buffer for 180 seconds to follow the dissociation of analyte-ligand complexes. The signal from the blank channel (flow cell-1) was subtracted from the channel containing human Retinoblastoma-1 protein. The binding was removed by injecting 100 μ l of HBS-P, pH 7.4.

Data analysis. Sensorgrams of the interaction generated by the instrument were analyzed using the software BIAeval 3.2 (Biacore Inc., New Jersey). The reference surface data were subtracted from the reaction surface data to eliminate refractive-index changes of the solution, injection noise and non-specific binding to the blank surface. A blank injection with buffer alone was subtracted from the resulting reaction surface data. Data was globally fitted to the steady state affinity.

Cell culture and transient transfections. The TpMD409.B2 cell line is a *T. parva Muguga*-infected B-cell clone (B2) whose establishment, phenotypic characteristics and culture conditions have been described^{25–27}. BL20 cells are a retrovirus-transformed B cell line isolated from an infected cow. To eliminate the parasite, cells were treated for the indicated time with buparvaquone (50 ng/ml, 1 mg/ml stock in ethanol; Sigma). To inhibit E2F activity, cells were treated for the indicated time with HLM006474 (10 μ M in DMSO, Sigma), or DMSO (10 μ M; Sigma) as a control. The *T. annulata*-infected cell lines BL20 (B cell), as well as Ode (macrophage) cell lines are well described and characterized.

Reporter gene assays. TpMD409.B2 cells were co-transfected with 20 μ g (E2F-luc, mE2F-luc), or 10 μ g (cyclin E-luc) reporter construct, 20 μ g of expression vector and 5 μ g of pCMV-lacZ, where indicated. Luciferase and β -galactosidase activities were measured 24 h after transfection according to previously published procedures²⁵. TpMD409.B2 cells were also co-transfected with pCMV-HA-DP-1 D103–126 and *c-myc*-luciferase as previously described²⁸.

Flow cytometric analysis of BrdU incorporation. TpMD409.B2 cells were transfected as described for cell cycle analysis except that H2B-EGFP expression vector (10 μ g) was used instead of phGFP-S65T. 48 h after transfection, cells were pulse labeled for 1 h with BrdU (5-bromo-2'-deoxyuridine) (10 μ g/ml) then harvested and fixed in 1% paraformaldehyde, 0.01% Tween 20 for 48 h to 72 h at 4 °C. BrdU staining was performed using phycoerythrin-labeled anti-BrdU antibody (PharMingen) according to the previously published DNase I procedure²⁹. A minimum of 2,000 events in each whole population and GFP positive fraction were collected on a FACSCAN flow cytometer and analyzed with CellQuest.

Alternatively, untreated and buparvaquone treated TpMD409.B2 cells, pulse labeled for 30 min with BrdU, were fixed in 70% ethanol overnight at –20 °C. BrdU staining was performed using fluorescein isothiocyanate-labeled anti BrdU antibody (Boehringer Mannheim) following the acid denaturation procedure. DNA was counter-stained for 30 min at room temperature with propidium iodide (5 μ g/ml) in PBS containing RNase (200 μ g/ml). 10,000 events were analyzed on a FACSCAN.

Cells extracts, antibody and Western Blot analysis. TpMD409.B2 cells were washed twice in ice-cold PBS then lysed in ice-cold lysis buffer consisting of 10 mM HEPES pH 8, 150 mM NaCl, 1% NP40, 0.5% sodium deoxycholate, 0.1% SDS to which proteases (Complete, Roche) and phosphatases (5 mM Na₃VO₄, 50 mM NaF) inhibitors were added. Cell debris was pelleted by centrifugation at 13,000 \times g for 10 min at 4 °C and proteins were quantified by the Bradford method. Equal amounts of proteins were resolved by SDS-polyacrylamide gel and electro-transferred to nitrocellulose. The following antibodies were used in Western Blot analysis: anti-RB (1:1000) and anti-DP-1 (TFD10) (1:500) from PharMingen, anti-p130 (C-20) (1:400), anti-E2F-1 (KH95) (1:500), anti-E2F-3 (C1–18) (1:1000) and anti-E2F-4 (C-108) (1:300) from Santa Cruz Biotechnology. For the generation of antibodies, recombinant *TaGcpE* protein was generated using a pGEX6P-1 plasmid that places a GST-tag at the N-terminal end of the expressed recombinant protein. Fragments encoding both the N-terminus (17–412 aa) and C-terminus (413–808 aa) of *TaGcpE* were amplified from cDNA of *T. annulata* and cloned into the pGEX6p-1 plasmid. The 2 recombinant *TaGcpE* proteins were expressed in BL21 CodonPlus (DE3)-RIPL and cell pellets were suspended in PBS supplemented with protease inhibitor, 1 mM EDTA, 1 mg/ml lysozyme, then sonicated and centrifuge 10,000 rpm for 1 h at 4 °C. Cell lysates were incubated with glutathione sepharose beads, and recombinant proteins were eluted by elution buffer (10 mM glutathione, 50 mM Tris-HCl pH 8.0). Since the N-terminal half of *TaGcpE* was not soluble, sera were raised against the soluble C-terminal half of *TaGcpE* by immunizing two rats according to “the Speedy 28-day protocol” (Eurogentec).

Immunofluorescence assays. 5×10^4 cells were plated on glass coverslips coated with poly-L-lysine. Cells were fixed with 4% paraformaldehyde in PBS for 10 min, and permeabilized using 0.5% Triton X-100. After a 30 min treatment with blocking solution (1% BSA and PBST buffer: 0.1% Tween20), cells were stained for 2 h with the primary antibodies (anti-RB: Santa Cruz Biotechnology #sc-73598, anti-1C12, and a rat anti-GcpE antibody. After three washes with PBS, cells were incubated with the secondary antibody (Alexa fluor 488 donkey anti-rat IgG #A21208 and Alexa fluor 594 goat anti-mouse IgG #A11005) for 45 min in the dark. After three additional washes, slides were stained with 4–6-diamidino-2-phenylindole, diluted 1/1000 (Sigma Aldrich) for 5 min to visualize the nuclei. Labelled preparations were mounted in Dako and analysed by inverted microscopy (Leica DMI6000s). Acquisitions were made with the Metamorphous software.

Electrophoretic mobility shift assay (EMSA). Nuclear extracts were prepared as described previously³⁰. 5 µg of nuclear extracts were incubated for 30 min at room temperature with gP32 labeled double stranded oligonucleotide in binding buffer (5 mM HEPES Ph 8, 0.5 mM EDTA, 5% glycerol, 0.5 mM DTT, 0.5 M PMSF, 0.5 mM MgCl₂, 0.005% NP40, 1 mg/ml BSA, sonicated salmon sperm DNA 100 µg/ml). The complexes were resolved on a non-denaturing 4% polyacrylamide gel. The following oligonucleotides were used:

E2F – WT: 5' CTAGTGCAATTTTCGCGCCAAACTTG 3'
E2F – MUT: 5' CTAGTGCAATTGCTCGACCAACTTG 3'

Peptide synthesis. The amino acid sequence of RB-1 based on the parasite sequence (VKKKKIKREIKIYIEEVFTPLVLKCKELK) was synthesized. Cysteine in wild type RB1 was replaced by an Asparagine (N; in bold VKKKKIKREIKIYIEEVFTPLVLKCKELK). The penetrating peptide to facilitate cell entry is underlined. 3 different concentrations of peptides were used for 2 h to determine the minimum effective concentration (1 µM) with minimum toxic effect, which was used to perform each experiment as indicated.

Statistical analysis. Student's two-tailed T-tests were performed for cell culturing experiments with at least $N = 3$ for each experiment. Sample size was chosen based on literature references for similar experiments in other systems. The values for N , P , and the specific statistical test performed for each experiment are included in the appropriate figure legends or main text. In each figure or text, the following symbols represent respective p-value ranges: * $0.05 > p \geq 0.01$; ** $0.01 > p \geq 0.001$, *** $p < 0.001$. Differences were considered significant if $p < 0.05$.

Received: 25 June 2019; Accepted: 18 February 2020;

Published online: 04 March 2020

References

- Tretina, K., Gotia, H. W., Mann, D. J. & Silva, J. C. Theileria-transformed bovine leukocytes have cancer hallmarks. *Trends Parasitology* **31**, 8, <https://doi.org/10.1016/j.pt.2015.04.001> (2015).
- Haidar, M. *et al.* TGF-beta2 induces Grb2 to recruit PI3-K to TGF-RII that activates JNK/AP-1 signaling and augments invasiveness of Theileria-transformed macrophages. *Sci. Rep.* **5**, 15688, <https://doi.org/10.1038/srep15688> (2015).
- Morrison, W. I., Connelley, T., Hemmink, J. D. & MacHugh, N. D. Understanding the basis of parasite strain-restricted immunity to Theileria parva. *Annu. Rev. Anim. Biosci.* **3**, 397–418, <https://doi.org/10.1146/annurev-animal-022513-114152> (2015).
- Woolhouse, M. E. *et al.* Co-infections determine patterns of mortality in a population exposed to parasite infection. *Sci. Adv.* **1**, e1400026, <https://doi.org/10.1126/sciadv.1400026> (2015).
- Marsolier, J. *et al.* Theileria parasites secrete a prolyl isomerase to maintain host leukocyte transformation. *Nat.* **16**, 378–382, <https://doi.org/10.1038/nature14044> (2015).
- Ryo, A. *et al.* PIN1 is an E2F target gene essential for Neu/Ras-induced transformation of mammary epithelial cells. *Mol. Cell Biol.* **22**, 5281–5295 (2002).
- Dobbelaere, D. & Heussler, V. Transformation of leukocytes by Theileria parva and T. annulata. *Annu. Rev. Microbiol.* **53**, 1–42, <https://doi.org/10.1146/annurev.micro.53.1.1> (1999).
- Kinnaird, J. H. *et al.* A Bovine Lymphosarcoma Cell Line Infected with Exhibits an Irreversible Reconfiguration of Host Cell Gene Expression. *PLoS One* **8**, e66833, <https://doi.org/10.1371/journal.pone.0066833> (2013).
- Tretina, K. *et al.* Re-annotation of the Theileria parva genome refines 53% of the proteome and uncovers essential components of N-glycosylation, a conserved pathway in many organisms. *bioRxiv*, 749366, <https://doi.org/10.1101/749366>.
- Dick, F. A. & Rubin, S. M. Molecular mechanisms underlying RB protein function. *Nat. reviews. Mol. Cell Biol.* **14**, 297–306, <https://doi.org/10.1038/nrm3567> (2013).
- Trimarchi, J. M. & Lees, J. A. Sibling rivalry in the E2F family. *Nat. reviews. Mol. Cell Biol.* **3**, 11–20, <https://doi.org/10.1038/nrm714> (2002).
- Dahiya, A., Gavin, M. R., Luo, R. X. & Dean, D. C. Role of the LXCXE binding site in Rb function. *Mol. Cell Biol.* **20**, 6799–6805 (2000).
- van den Heuvel, S. & Dyson, N. J. Conserved functions of the pRB and E2F families. *Nat. reviews. Mol. Cell Biol.* **9**, 713–724, <https://doi.org/10.1038/nrm2469> (2008).
- Singh, M., Krajewski, M., Mikolajka, A. & Holak, T. A. Molecular determinants for the complex formation between the retinoblastoma protein and LXCXE sequences. *J. Biol. Chem.* **280**, 37868–37876, <https://doi.org/10.1074/jbc.M504877200> (2005).
- Binne, U. K. *et al.* Retinoblastoma protein and anaphase-promoting complex physically interact and functionally cooperate during cell-cycle exit. *Nat. Cell Biol.* **9**, 225–232, <https://doi.org/10.1038/ncb1532> (2007).
- Longworth, M. S., Herr, A., Ji, J. Y. & Dyson, N. J. RBF1 promotes chromatin condensation through a conserved interaction with the Condensin II protein dCAP-D3. *Genes. Dev.* **22**, 1011–1024, <https://doi.org/10.1101/gad.1631508> (2008).
- Fera, D. *et al.* Identification and characterization of small molecule antagonists of pRb inactivation by viral oncoproteins. *Chem. Biol.* **19**, 518–528, <https://doi.org/10.1016/j.chembiol.2012.03.007> (2012).
- von Schubert, C. *et al.* The transforming parasite Theileria co-opts host cell mitotic and central spindles to persist in continuously dividing cells. *PLoS biology* **8**, <https://doi.org/10.1371/journal.pbio.1000499> (2010).
- Gardner, M. J. *et al.* Genome sequence of Theileria parva, a bovine pathogen that transforms lymphocytes. *Sci.* **309**, 134–137, <https://doi.org/10.1126/science.1110439> (2005).
- Harb, O. S. & Roos, D. S. The eukaryotic pathogen databases: a functional genomic resource integrating data from human and veterinary parasites. *Methods Mol. Biol.* **1201**, 1–18, https://doi.org/10.1007/978-1-4939-1438-8_1 (2015).
- Silva, J. C. *et al.* Genome-wide diversity and gene expression profiling of Babesia microti isolates identify polymorphic genes that mediate host-pathogen interactions. *Sci. Rep.* **6**, 35284, <https://doi.org/10.1038/srep35284> (2016).
- Emanuelsson, O., Brunak, S., von Heijne, G. & Nielsen, H. Locating proteins in the cell using TargetP, SignalP and related tools. *Nat. Protoc.* **2**, 953–971, <https://doi.org/10.1038/nprot.2007.131> (2007).
- Krogh, A., Larsson, B., von Heijne, G. & Sonnhammer, E. L. Predicting transmembrane protein topology with a hidden Markov model: application to complete genomes. *J. Mol. Biol.* **305**, 567–580, <https://doi.org/10.1006/jmbi.2000.4315> (2001).
- Fankhauser, N. & Maser, P. Identification of GPI anchor attachment signals by a Kohonen self-organizing map. *Bioinforma.* **21**, 1846–1852, <https://doi.org/10.1093/bioinformatics/bti299> (2005).
- Baumgartner, M. *et al.* Constitutive PI3-K activity is essential for proliferation, but not survival, of Theileria parva-transformed B cells. *Cell. microbiology* **2**, 329–339 (2000).
- Dobbelaere, D. A. *et al.* Expression of Tac antigen component of bovine interleukin-2 receptor in different leukocyte populations infected with Theileria parva or Theileria annulata. *Infect. Immun.* **58**, 3847–3855 (1990).

27. Moreau, M. F. *et al.* Theileria annulata in CD5(+) macrophages and B1 B cells. *Infect. Immun.* **67**, 6678–6682 (1999).
28. Dessauge, F. *et al.* c-Myc activation by Theileria parasites promotes survival of infected B-lymphocytes. *Oncogene* **24**, 1075–1083, <https://doi.org/10.1038/sj.onc.1208314> (2005).
29. Penit, C. & Vasseur, F. Phenotype analysis of cycling and postcycling thymocytes: evaluation of detection methods for BrdUrd and surface proteins. *Cytometry* **14**, 757–763, <https://doi.org/10.1002/cyto.990140708> (1993).
30. Chaussepied, M. *et al.* Upregulation of Jun and Fos family members and permanent JNK activity lead to constitutive AP-1 activation in Theileria-transformed leukocytes. *Mol. biochemical parasitology* **94**, 215–226 (1998).

Acknowledgements

We are grateful to Dr. Bret A. Hassel for manuscript feedback, and Linda Hamburg for her contributions to the mouse and laboratory work. This work was supported in part by the United States Department of Agriculture, Agricultural Research Service (USDA-ARS) (58-5348-4-013), by the Norman Borlaug Commemorative Research Initiative, an initiative between the Feed the Future program of the U.S. Agency for International Development (USAID) and USDA-ARS (58-5348-2-117F), by the Department for International Development of the United Kingdom, by the Bill and Melinda Gates Foundation (OPP1078791), and by the National Institute of Allergy and Infectious Diseases (T32 AI007540-14, on Immunity and Infection). This work was also supported by the grant Labex ParaFrap (ANR-11-LABX-0024) and core funding from INSERM and the CNRS awarded to GL and a CRG4 grant (URF/1/2610-01-01) from the Office for Sponsored Research (OSR) in King Abdullah University of Science and Technology (KAUST) award to AP and GL and the faculty baseline fund (BAS/1/1020-01-01) awarded to AP.

Author contributions

K.T., J.C.S., G.L., R.P.B., C.A.D., D.G., V.M.N., D.P.K., A.P. conceived and designed the project. K.T., J.C.S. and G.L. wrote the paper and prepared the figures. T.S., S.A.M.-B. and L.F. contributed to antibody development. K.T., M.H., M.C. and S.M. contributed to bioinformatic analysis, surface plasmon resonance analysis, cell culture assays, flow cytometric analysis, Western blot, co-immunoprecipitation analysis, immunofluorescence analysis, and EMSA.

Competing interests

The authors declare no competing interests.

Additional information

Supplementary information is available for this paper at <https://doi.org/10.1038/s41598-020-60939-x>.

Correspondence and requests for materials should be addressed to J.C.S.

Reprints and permissions information is available at www.nature.com/reprints.

Publisher's note Springer Nature remains neutral with regard to jurisdictional claims in published maps and institutional affiliations.



Open Access This article is licensed under a Creative Commons Attribution 4.0 International License, which permits use, sharing, adaptation, distribution and reproduction in any medium or format, as long as you give appropriate credit to the original author(s) and the source, provide a link to the Creative Commons license, and indicate if changes were made. The images or other third party material in this article are included in the article's Creative Commons license, unless indicated otherwise in a credit line to the material. If material is not included in the article's Creative Commons license and your intended use is not permitted by statutory regulation or exceeds the permitted use, you will need to obtain permission directly from the copyright holder. To view a copy of this license, visit <http://creativecommons.org/licenses/by/4.0/>.

© The Author(s) 2020