

Research

Open Access

## Clinical response in Japanese metastatic melanoma patients treated with peptide cocktail-pulsed dendritic cells

Yasuto Akiyama\*<sup>1</sup>, Ryuji Tanosaki<sup>2</sup>, Naoki Inoue<sup>2</sup>, Makiko Shimada<sup>2</sup>, Yukie Hotate<sup>2</sup>, Akifumi Yamamoto<sup>2</sup>, Naoya Yamazaki<sup>2</sup>, Ichiro Kawashima<sup>3</sup>, Ikuei Nukaya<sup>3</sup>, Kazutoh Takesako<sup>3</sup>, Kouji Maruyama<sup>1</sup>, Yoichi Takaue<sup>2</sup> and Ken Yamaguchi<sup>1</sup>

Address: <sup>1</sup>Immunotherapy Division, Shizuoka Cancer Center Research Institute, Shimonagakubo, Nagaizumi-cho, Shizuoka, Japan, <sup>2</sup>Stem Cell Transplantation Unit, National Cancer Center Hospital, 5-1-1 Tsukiji, Chuo-ku, Tokyo, Japan and <sup>3</sup>Biotechnology Research Laboratories, Takara Bio Inc., Ltd, Seta 3-4-1, Otsu, Shiga, Japan

Email: Yasuto Akiyama\* - y.akiyama@scchr.jp; Ryuji Tanosaki - rtanosak@ncc.go.jp; Naoki Inoue - nainoue@ncc.go.jp; Makiko Shimada - mashimad@ncc.go.jp; Yukie Hotate - yhotate@ncc.go.jp; Akifumi Yamamoto - afyamamo@gan2.ncc.go.jp; Naoya Yamazaki - nyamazak@ncc.go.jp; Ichiro Kawashima - kawashimai@takara-bio.co.jp; Ikuei Nukaya - nukayai@takara-bio.co.jp; Kazutoh Takesako - takesakok@takara-bio.co.jp; Kouji Maruyama - k.maruyama@scchr.jp; Yoichi Takaue - ytakaue@gan2.res.ncc.go.jp; Ken Yamaguchi - k.yamaguchi@scchr.jp

\* Corresponding author

Published: 28 January 2005

Received: 18 November 2004

*Journal of Translational Medicine* 2005, **3**:4 doi:10.1186/1479-5876-3-4

Accepted: 28 January 2005

This article is available from: <http://www.translational-medicine.com/content/3/1/4>

© 2005 Akiyama et al; licensee BioMed Central Ltd.

This is an Open Access article distributed under the terms of the Creative Commons Attribution License (<http://creativecommons.org/licenses/by/2.0>), which permits unrestricted use, distribution, and reproduction in any medium, provided the original work is properly cited.

### Abstract

**Background:** Metastatic, chemotherapy-resistant melanoma is an intractable cancer with a very poor prognosis. As to immunotherapy targeting metastatic melanoma, HLA-A2<sup>+</sup> patients were mainly enrolled in the study in Western countries. However, HLA-A24<sup>+</sup> melanoma patients-oriented immunotherapy has not been fully investigated. In the present study, we investigated the effect of dendritic cell (DC)-based immunotherapy on metastatic melanoma patients with HLA-A2 or A24 genotype.

**Methods:** Nine cases of metastatic melanoma were enrolled into a phase I study of monocyte-derived dendritic cell (DC)-based immunotherapy. HLA-genotype analysis revealed 4 cases of HLA-A\*0201, 1 of A\*0206 and 4 of A\*2402. Enriched monocytes were obtained using OptiPrep™ from leukapheresis products, and then incubated with GM-CSF and IL-4 in a closed serum-free system. After pulsing with a cocktail of 5 melanoma-associated synthetic peptides (gp100, tyrosinase, MAGE-2, MAGE-3 and MART-1 or MAGE-I) restricted to HLA-A2 or A24 and KLH, cells were cryopreserved until used. Finally, thawed DCs were washed and injected subcutaneously (s.c.) into the inguinal region in a dose-escalation manner.

**Results:** The mean percentage of DCs rated as lin<sup>-</sup>HLA-DR<sup>+</sup> in melanoma patients was 46.4 ± 15.6%. Most of DCs expressed high level of co-stimulatory molecules and type1 phenotype (CD11c<sup>+</sup>HLA-DR<sup>+</sup>), while a moderate number of mature DCs with CD83 and CCR7 positive were contained in DC products. DC injections were well tolerated except for transient liver dysfunction (elevation of transaminases, Grade I-II). All 6 evaluable cases except for early PD showed positive immunological responses to more than 2 melanoma peptides in an ELISPOT assay. Two representative responders demonstrated strong HLA-class I protein expression in the tumor and

very high scores of ELISPOT that might correlate to the regression of metastatic tumors. Clinical response through DC injections was as follows : 1 CR, 1 PR, 1SD and 6 PD. All 59 DC injections in the phase I study were tolerable in terms of safety, however, the maximal tolerable dose of DCs was not determined.

**Conclusions:** These results suggested that peptide cocktail-treated DC-based immunotherapy had the potential for utilizing as one of therapeutic tools against metastatic melanoma in Japan.

**Background**

Despite many attempts in the last few years to target cancer-specific antigens, a breakthrough in terms of clinical response has yet to be achieved mainly because of a scarcity of effective genuine cancer antigens, immunological evasion, or an immunosuppressive state.

Melanoma-associated antigens are categorized as class I human leukocyte antigen (HLA)-restricted cancer/testis antigens [1] which are considered to be tolerable to the immune system because they are also expressed in normal tissues. However, malignant melanoma is the most well known cancer in which multiple tumor-specific antigens have been defined and utilized in vaccination strategies as peptide vaccines or peptide-pulsed DC vaccines [2-9].

From a clinical point of view, several vaccination strategies for stage IV melanoma using a combination of several (more than 3) peptides with a restriction to HLA-A2 have been reported to date [10,11]. However, little immunotherapeutic study regarding HLA-A24-restricted multiple peptides has been conducted because HLA-A24 is not a common allele in Caucasians. Several studies have demonstrated the identification of many HLA-A24-restricted CTL epitopes from various cancer-related antigens including p53, CEA, telomerase, tyrosinase, MAGE proteins etc. [12-18]. When it comes to melanoma, our group demonstrated the feasibility of using a combination of 5 melanoma-associated peptides with restriction of HLA-A24 (peptide cocktail) as a specific cancer vaccine in an immunotherapeutical trial (Akiyama et al, Anticancer

Res., 2004). Based on basic research results, a phase I clinical trial of HLA-A2 or A24-restricted melanoma peptide cocktail-pulsed dendritic cell-based immunotherapy has been performed. Here we describe the safety and efficacy of DC-based immunotherapy against metastatic melanoma.

**Materials and methods**

**Patient characteristics and eligibility criteria**

Nine patients with metastatic melanoma were enrolled in a phase I clinical trial of a peptide cocktail-pulsed DC-based vaccine approved by the Institutional Review Board (No. 12-93 and 12-94) of the National Cancer Center, Tokyo. All patients gave written informed consent. All patients had received prior surgery, chemotherapy and radiation (Table 1). Three subjects had metastatic lesions in the brain and been given radiation to control them. Inclusion criteria were: i) biopsy-proven stage IV metastatic melanoma, ii) age ≥ 18 years, iii) performance status ≤ 2, iv) HLA-A2 or A24 phenotype and v) measurable target lesions. Exclusion criteria were : i) prior therapy < 4 weeks before trial entry, ii) untreated CNS lesion, iii) pregnancy, iv) autoimmune disease, and v) concurrent corticosteroid/immunosuppressive therapy. All the patients, who gave written informed consent, received subcutaneously (s.c) 3 DC vaccines at the inguinal region weekly and toxicity was checked. DCs were injected in dose-escalation design at a dose level per cohort of 1.0, 2.0 and 5.0 × 10<sup>7</sup>/body/shot (Table 1). The injected DC number was calculated from the percentage of Lin<sup>-</sup>HLA-DR<sup>+</sup> gated populations in a FACS analysis.

**Table 1: Phase I study of DC-based therapy against melanoma**

Patient No.	Age	Sex	Previous therapy	Measurable lesions	DC injection (times)	Side effect	DTH peptide KLH		Response
1	41	F	ST, CT, RT, IFNβ	lung, LN	1 × 10 <sup>7</sup> (10)	Hepatic (II)	-	++	PR
2	75	M	ST, CT, IFNβ	LN	1 × 10 <sup>7</sup> (10)	-	+	+	SD
3	49	F	ST, CT, IFNβ, RT	lung, liver	1 × 10 <sup>7</sup> (3)	-	-	-	(PD)*
4	49	M	ST, CT	lung, liver	2 × 10 <sup>7</sup> (6)	-	-	-	PD
5	50	M	ST, CT, IFNβ	lung, liver, LN	2 × 10 <sup>7</sup> (6)	Hepatic (I)	-	-	PD
6	69	M	ST, CT, IFNβ	LN	2 × 10 <sup>7</sup> (10)	-	+	+	CR
7	61	M	ST, CT, RT	liver, LN	5 × 10 <sup>7</sup> (8)	Hepatic (I)	+	++	PD
8	64	F	ST, CT, RT	lung	5 × 10 <sup>7</sup> (3)	Fever (I)	-	-	(PD)
9	66	F	ST, CT,	lung, LN	5 × 10 <sup>7</sup> (3)	-	-	-	(PD)

\* The (PD) patients represent those who received fewer than 4 DC injections because of an early progression of the disease.

**Preparation of DCs and peptides**

Leukapheresis products from 7 L of processed blood were washed and centrifuged using density-adjusted OptiPrep™ (Axis-Shield PoC, Oslo, Norway), then the monocyte layer at the top was retrieved. Cells were transferred to an X-fold culture bag (Nexell, Irvine, CA) and cultured in the presence of GM-CSF at 50 ng/ml (CellGenix, Freiburg, Germany) and IL-4 at 50 ng/ml (CellGenix) in X-VIVO15 serum-free medium (Biowhittaker, Walkersville, MD). After 7 days, harvested cells were pulsed with a cocktail of 5 melanoma-specific synthetic peptides (25 µg/ml each) restricted to HLA A2 or A24 and KLH (25 µg/ml, Intracell, Frederick, MD). DC-enriched cells were washed and cryopreserved in Cryocyte bags (Baxter Healthcare Co., Deerfield, IL) until used. The purity of CD14<sup>+</sup> cells was evaluated with a flow cytometer (FACSCalibur, Becton-Dickinson Co., CA) before and after OptiPrep™ separation. The percentage of DCs was rated as the lin-HLA-DR<sup>+</sup> population (lineage antibodies including CD3, CD14, CD16, CD19, CD20, CD56; Becton-Dickinson Co.). The additional DC-related markers were determined on gated lin-HLA-DR<sup>+</sup> cells. The following peptides restricted to HLA-A2 or A24 were synthesized according to GMP standards by Multiple Peptide Systems, CA. HLA-A2: MART-1<sub>27-35</sub> (AAGIGILTV), gp100<sub>209-217</sub> (IMDQVPFSV), tyrosinase<sub>368-376</sub> (YMDGTMSQV), MAGE-2<sub>157-166</sub> (YLQLVFGIEV), MAGE-3<sub>271-279</sub> (FLWGPRLV); HLA-A24: gp100<sub>152-160</sub> (VWKTWGQYW), tyrosinase<sub>206-214</sub> (AFLPWHRLF), MAGE-1<sub>135-143</sub> (NYKHCFPEI), MAGE-2<sub>156-164</sub> (EYLQLVFGI), MAGE-3<sub>195-203</sub> (IMPKAGLLI).

**Characterization of tumor specimens before DC vaccines**

Skin metastatic lesions were obtained from patients who gave written informed consent. The expression of melanoma tumor antigens was investigated using RT-PCR as described previously [19]. HLA protein expression was also evaluated using an immunohistochemical (IHC) analysis with anti-HLA-A2 or A24 monoclonal antibody (One Lambda Inc., Canoga Park, CA). A phenotypical analysis of lymphocytes infiltrating the tumor site was also performed using IHC.

**Clinical and immunological monitoring**

Adverse effects were evaluated according to the NCI Common toxicity criteria after 3 DC injections. Standard conventional definitions of major (complete or partial) objective responses were used. Stable disease (SD) was defined as less than a 25% change in size with no new lesions lasting at least 4 weeks. Clinical response was rated as maximal through the DC vaccinations. The patients received up to 10 injections on the condition that at least one measurable lesion showed more than stable disease (SD) response and/or an ELISPOT assay performed after 4 injections indicated a positive response for more than 1 melanoma-associated peptides. PBMC samples were har-

vested before and 29, 78, 134 and 190 days after the 1<sup>st</sup> DC injection, and frozen prior to use for immunological monitoring tests. All patients were followed up for 2 years after the enrollment into the study.

**ELISPOT assay**

The ELISPOT assay was performed using in vitro re-stimulations. Briefly, PBMCs were incubated in a 24-well culture plate at  $4 \times 10^6$  per ml and divided into non-adherent and adherent cells. Adherent cells were treated with a peptide cocktail and  $\beta$ 2-microglobulin for 2 hrs, and co-cultured with non-adherent cells in the presence of IL-2 at 15 U/ml and IL-7 at 10 ng/ml. On day 7, non-adherent cells were re-stimulated with peptide-pulsed adherent cells. On day 14, responder cells ( $1 \times 10^4$ /well) were incubated with peptide-pulsed target cells ( $1 \times 10^5$ /well; .221A201 cells for HLA-A2 peptide or TISI cells for HLA-A24 peptide) in a 96-well culture plate coated with anti-IFN- $\gamma$  antibody (MABTECH AB, Nacka, Sweden) overnight. Finally positive spots stained with anti-IFN- $\gamma$  antibody were measured using the KS ELISPOT system (Carl Zeiss AG, Overkochen, Germany). HLA-A2-restricted Influenza M1 peptide (GILGFVFTL) or HLA-A24-restricted EBNA3A peptide (RYSIFFDY) was used as a negative control.

**Tetramer staining**

PBMCs were re-stimulated twice in vitro and utilized for tetramers staining. CD8<sup>+</sup>-enriched T cells were obtained by the depletion of CD4<sup>+</sup> T cells using Dynabeads M-450 CD4 (Dyna, Oslo, Norway) and used for tetramers staining. The staining was performed according to the method reported by Kuzushima et al [20]. The PE-labeled tetramers used in the present study were as follows: HLA-A\*0201 MART1 (Beckman Coulter Inc., San Diego, CA), HLA-A\*0201 gp100, HLA-A\*2402 tyrosinase, HLA-A\*2402 MAGE-1, HLA-A\*2402 HIV (RYLRDQQLL) and HLA-A\*0201 Influenza M1 tetramers (MBL, Nagoya, Japan).

**Intracellular cytokine staining**

PBMCs were stimulated with 25 ng/ml of PMA (Sigma) and 1 µg/ml of ionomycin (Sigma) for 5 hrs in a 96-well culture plate. Breferrdin A (10 µg/ml) was also added to cultures in the last hour. After the stimulation, cells were stained with FITC-anti-CD4 MoAb, and subsequently intracellular staining was performed with fix/permealization buffer and PE-labeled anti-IFN- $\gamma$  or anti-IL-4 MoAb (Pharmingen, San Diego, CA). Finally, the ratio of Th1 (IFN- $\gamma$ <sup>+</sup>) and Th2 (IL-4<sup>+</sup>) was calculated in PBMC samples obtained before and after DC vaccination.

**DTH reactions**

The HLA-A2 or A24 peptide cocktail solution diluted to a dose of 5 µg/ml (each peptide) and KLH (50 µg/ml) were injected intradermally on the patient's forearm and the

**Table 2: Immunological monitoring in melanoma patients**

Patient No.	HLA	Tumor antigen, HLA expression	ELISPOT	Tetramer	Th1/Th2 balance
1	A*2402	3/5(Tyr,M1,M2), A24(+)	3/5(Tyr.M1,M2)	Tyrosinase (0.34%)	5.19 (1.45) <sup>a</sup>
2	A*0201	A2(+)	2/5(MART1,gp100)	MART1 (0.64%)	3.68 (1.49)
3	A*2402	A24(-)	N. D <sup>b</sup>	N. D.	-
4	A*0206	A2(-)	2/5(MART1, M2)	-	3.05 (2.57)
5	A*0201	A2(-)	2/5(MART1, M2)	MART1 (1.48%)	2.83 (3.68)
6	A*2402	2/5(M2,M3), A24(+)	2/5(M2, M3)	-	3.76 (2.00)
7	A*0201	4/5(MART1,Tyr,gp100,M2), A2(+)	2/5(gp100, M2)	-	2.64 (1.79)
8	A*2402	A24(-)	N. D.	N. D.	-
9	A*0201	A2(+)	1/5(gp100) <sup>c</sup>	N. D.	N. D.

<sup>a</sup>The value in the parenthesis shows Th1/Th2 ratio prior to DC vaccination. <sup>b</sup>N. D. ; not done.

<sup>c</sup>The value shows the one obtained prior to DC vaccines.

redness and induration at the injection site was measured. PPD was used as a positive control.

### Statistical analysis

Statistical differences were analyzed using Student's paired two-tailed *t*-test. Values of  $p < 0.05$  were considered significant.

## Results

### DC characterization

The mean percentage of DCs rated as lin<sup>-</sup>HLA-DR<sup>+</sup> in melanoma patients was  $46.4 \pm 15.6\%$ , not different from that in healthy volunteers (data not shown). The frequencies of the DC-related markers were determined on gated lin<sup>-</sup>HLA-DR<sup>+</sup> cells: HLA-class I  $97.5 \pm 0.9\%$ , CD80  $87.6 \pm 6.9\%$ , CD86  $85.5 \pm 7.4\%$ , CD1a  $55.2 \pm 24.2\%$ , CD83  $29.9 \pm 13.3\%$ , CCR7  $32.4 \pm 13.7\%$ , DC SIGN  $78.2 \pm 19.3\%$ , CD11c<sup>+</sup>HLA-DR<sup>+</sup>  $90.6 \pm 6.0\%$ , CD123<sup>+</sup>HLA-DR<sup>+</sup>  $0.99 \pm 1.3\%$ . Most of DCs expressed high level of co-stimulatory molecules and type1 phenotype (CD11c<sup>+</sup>HLA-DR<sup>+</sup>), while a moderate number of mature DCs with CD83 and CCR7 positive were contained in DC products. On the other hand, the T cell-stimulating activity of DCs investigated in the MLR assay using allogeneic T cells was as strong as that of DCs obtained from healthy volunteers (data not shown).

### Characterization of tumor specimen

An analysis of melanoma antigen expression by RT-PCR was performed in 3 cases. The expression of more than 2 antigens in the tumor was verified in all cases. HLA protein expression was positive in 5 out of 9 cases (Table 2). Patient 1 who showed a remarkable clinical response (PR), was representative of HLA protein-positive cases (Fig. 1). In contrast, in patient 7, HLA-A2 protein expression in the tumor was lost in the course of treatment.

### ELISPOT assay

CTL precursors of more than 2 melanoma peptides were recognized after DC vaccines in 6 of 9 cases. Two HLA-A2<sup>+</sup> cases (patients 5 and 9) showed HLA-A2 peptide-specific CTL responses before the vaccination. Patients 1 and 6, which showed remarkable clinical responses, exhibited many CTL precursors against a HLA-A24 restricted peptide-cocktail (Table 3, Figure 2). Notably, in patient 1, a remarkable increase in the CTL response to the HLA-A24 peptide cocktail was seen in accordance with the regression of metastatic tumor of the lung (Fig. 3). On the other hand, patient 7 also demonstrated a high CTL precursor frequency, but showed no significant clinical response.

### Tetramer staining

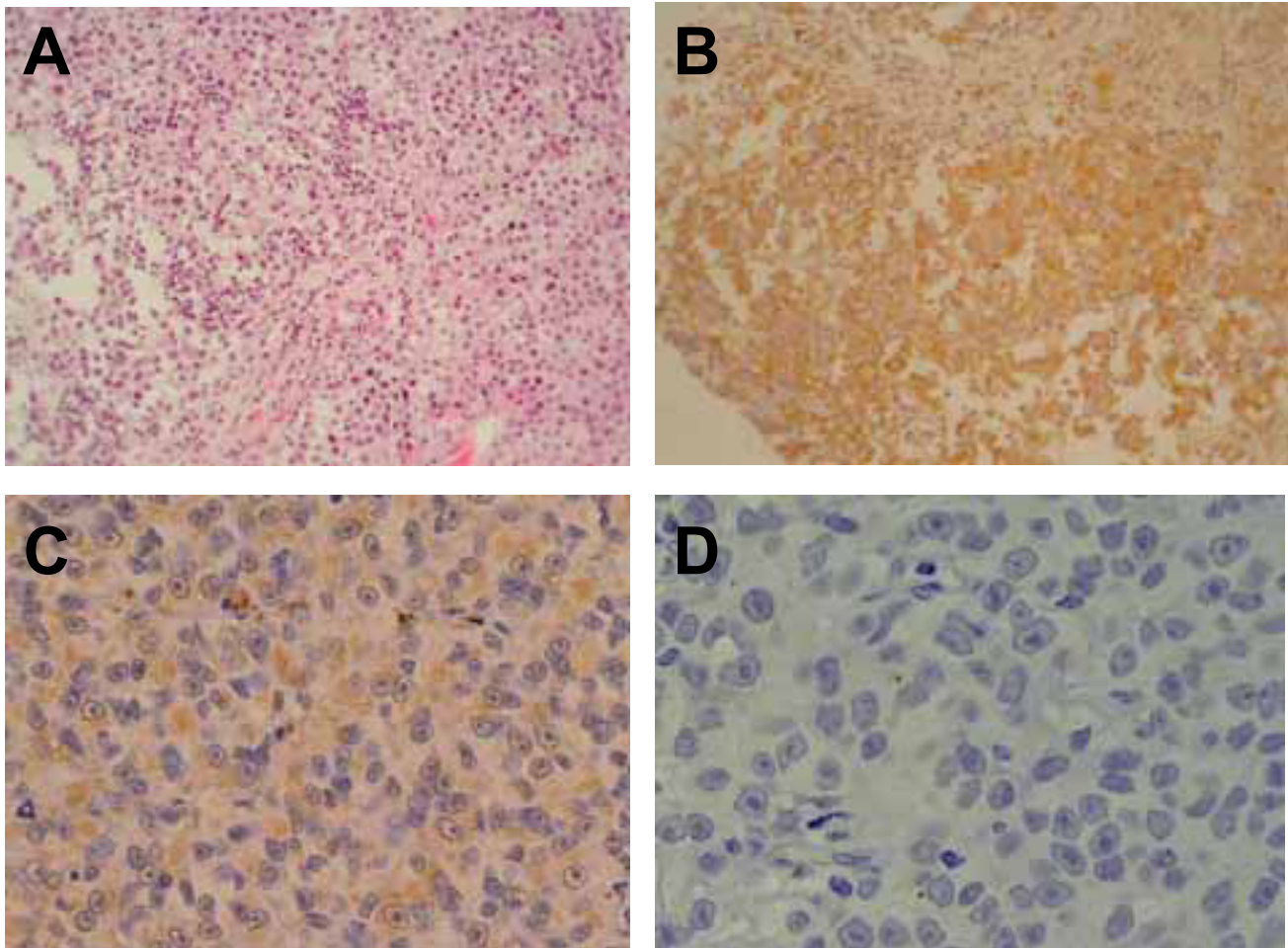
After CD4<sup>+</sup> T cell depletion, the frequency of CD8<sup>+</sup> cells was more than 85%. The proportion of PE-labeled tyrosinase-HLA-A24 tetramer-positive cells among gated CD8<sup>+</sup> cells was 0.34% in patient 1 (Table 2). HIV-A24 tetramer (negative control)-positive cells were not detected. The percentage of PE-labeled MART1-HLA-A2 tetramer-positive cells was 0.64% and 1.48% in patients 2 and 5, respectively. On the other hand, that of Influenza M1-HLA-A2 tetramer (negative control)-positive cells was 0.04%.

### Th1 and Th2 balance after DC vaccination

In 5 of 6 evaluable cases, the balance of Th1 and Th2 shifted more to Th1 after 4 DC injections compared with prior to vaccination. (Table 2). The amplitude of the shift seemed to be larger in clinical responders (patients 1, 2, 6) than non-responders (patients 4, 5, 7) (% of ratio increase;  $264 \pm 86$  vs.  $114 \pm 35$ ).

### DTH

Three of 6 evaluable cases showed positive DTH to a peptide-cocktail after DC injections (Table 1). On the other hand, 4 of 6 cases developed a DTH response to KLH pro-



**Figure 1**

Immunohistochemical analysis of metastatic tumor tissue from responder patient 1 and non-responder patient 7. A; H-E stain and B; anti-HLA-A24 MoAb from patient 1. C; anti-HLA-A2 MoAb before DC vaccination and D; anti-HLA-A2 MoAb after 4 DC injections from patient 7. Magnification  $\times 200$ .

tein. There were stronger reactions to KLH in patients 1 and 7.

#### **Adverse effects of DC vaccine**

Safety was assessed after 3 DC injections in all 9 cases. Three of 9 patients developed mild hepatic dysfunction (grade I-II), however it was only transient and disappeared in spite of the continuance of DC injections. Rheumatoid factor and anti-nuclear antibody were negative before the injection, but increased to 1:160 and 1:40, respectively after the injections finished in patient 1. No clinical symptoms of autoimmune disease were found in patient 1 (Table 1).

#### **Clinical response**

Clinical response was rated as maximal through the DC vaccinations. In 6 evaluable cases except for 3 cases of early PD cases due to a rapid progression of the disease, 1CR (patient 6), 1PR (patient 1), 1SD and 3 PD were obtained (Table 1). Large metastatic lesions in the lung and hilar nodes in patient 1 dramatically decreased in size after 4 DC injections, and almost disappeared after treatment finished (Fig. 3). Moderate sized cervical metastatic lesions in patient 6 finally started to decrease after 8 DC injections and disappeared surprisingly rapidly after the finish of DC therapy. In contrast, patient 7 who exhibited good immunological responses in the ELISPOT assay and

**Table 3: Peptide cocktail-specific CTL precursor frequency during DC vaccination**

Patient No.	DC injection (times)	before	Spot No./CD8 <sup>+</sup> T cell (%) <sup>a</sup>			
			day29	day78	day134	day190
1	1 × 10 <sup>7</sup> (10)	1.19/0.45	6.96/0.06	8.82/0.63	8.81/0.08	5.4/0.08
2	1 × 10 <sup>7</sup> (10)	0.07/0.05	0.07/0.2	0.02/0	0.02/0	0.29/0.03
3	1 × 10 <sup>7</sup> (3)	N.D. <sup>b</sup>	N.A. <sup>c</sup>	N.A.	N.A.	N.A.
4	2 × 10 <sup>7</sup> (6)	0.39/0.53	1.29/0.03	1.12/0	N.A.	N.A.
5	2 × 10 <sup>7</sup> (6)	1.74/0.05	0.51/0.2	1.25/0.04	N.A.	N.A.
6	2 × 10 <sup>7</sup> (10)	0.21/0.27	0.31/0.28	1.18/0.24	7.80/0.19	9.82/0.30
7	5 × 10 <sup>7</sup> (8)	0.62/0.20	6.52/0.1	7.33/0.11	N.A.	N.A.
8	5 × 10 <sup>7</sup> (3)	N.D.	N.A.	N.A.	N.A.	N.A.
9	5 × 10 <sup>7</sup> (3)	3.09/1.24	N.D.	N.A.	N.A.	N.A.

The percentages represent IFN- $\gamma$ -positive spot No. divided by total CD8<sup>+</sup> cell No. from 1 × 10<sup>4</sup> PBMCs. <sup>a</sup>Each value represents the percentage with peptide cocktail/without peptide cocktail. <sup>b</sup>N.D. ; not done, <sup>c</sup>N.A. ; sample not available.

DTH, showed no shrinkage of the tumor, resulting in cessation after 6 DC injections.

#### Characterization of infiltrated lymphocytes in the tumor

IHC analysis of infiltrated lymphocytes in the tumor after DC vaccines was performed only in patient 1 and 7. The obvious infiltration of a larger number of CD4<sup>+</sup> or CD8<sup>+</sup> T cells and a small number of CD20<sup>+</sup> B cells were shown in patient 1 (Fig. 4). In contrast, no significant cell infiltration was seen in patient 7 who did not develop any therapeutic effect on the tumor (data not shown).

#### Discussion

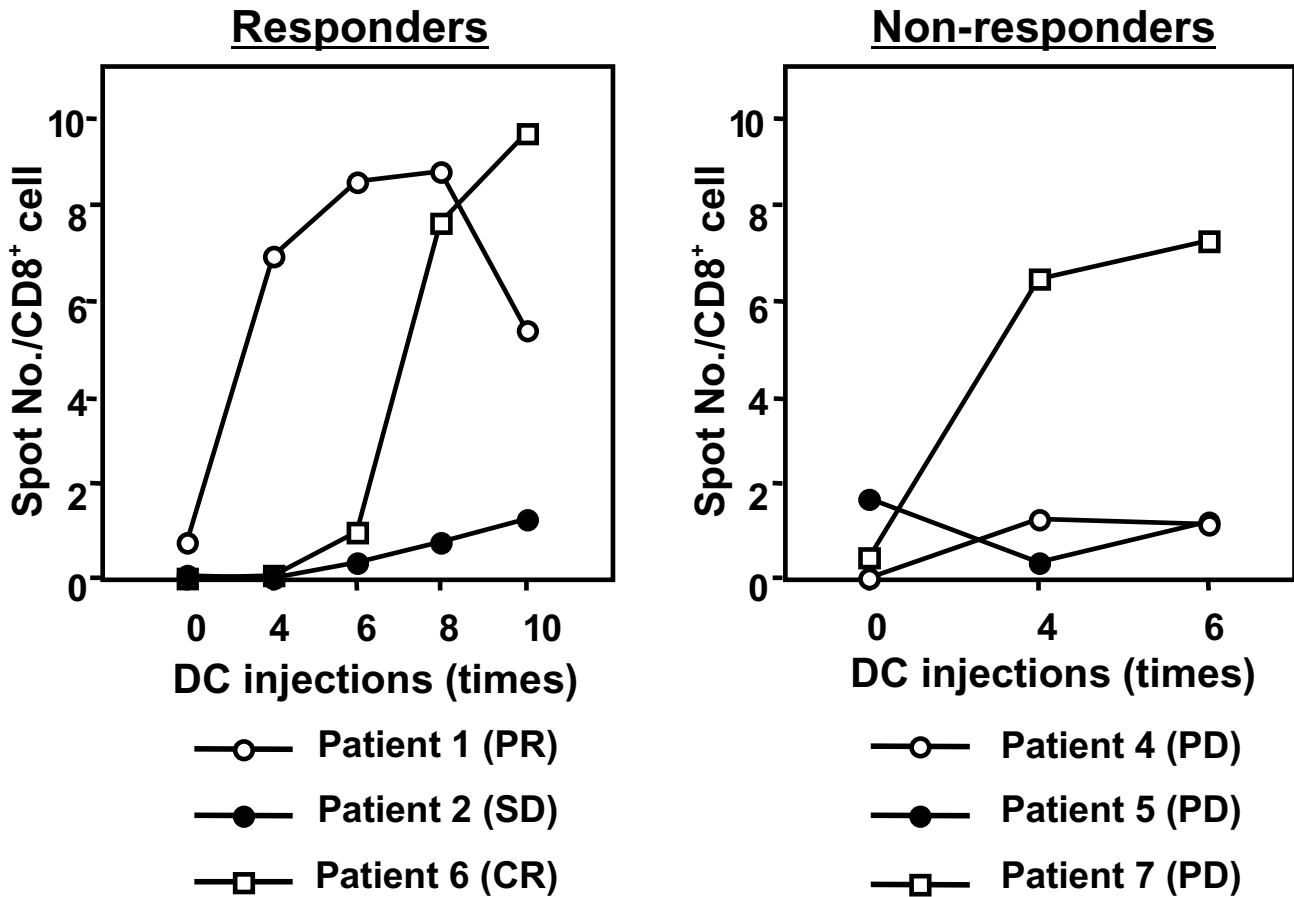
Clinical trials of specific immunotherapy against metastatic melanoma using peptide-pulsed Mo-derived DCs have been performed in mainly Western countries, and some fruitful results were obtained [7,10,11]. In those cases, most of the patients belonged to the HLA-A\*0201 type. In the present study, we investigated the effect of peptide-pulsed DCs on 4 cases of HLA-A\*2402<sup>+</sup> metastatic melanoma patients besides 4 cases of HLA-A\*0201<sup>+</sup> patients in a clinical phase I trial. This is the first report to demonstrate that peptide-pulsed DCs were effective in some HLA-A24<sup>+</sup> melanoma patients in Japan. It is well known that HLA-A\*2402 is a common genotype and around 60% positive in Asians. There was one case of HLA-A\*0206 patient among 5 HLA-A2<sup>+</sup> patients (Table 2). Sidney et al. [21] demonstrated that over 70% of the peptides that bound A0201 with high affinity were found to bind at least two other supertype molecules like A\*0202, A\*0203 or A\*0206. Taking it into considerations, the HLA-A\*0206 patient was finally enrolled into the study. With regard to other HLA-A24<sup>+</sup> solid cancers, stomach, colon and bladder cancers have been treated with peptide (MAGE-3)-pulsed DC vaccines, and showed

a limited response [22-24]. Considering that melanoma is highly immunogenic and probably a good model for tumor-specific immunotherapy despite being an unusual tumor in Asian countries, it deserves a phase I study using peptide-pulsed DCs.

In our study, peptide cocktails combining 5 peptides for each HLA type (HLA-A2 or A24) were prepared and used for DC pulsing. Our clinical study revealed positive ELISPOT responses against more than 2 peptides in all 6 evaluable cases. In previous reports, clinical DC therapy using more than 3 melanoma peptides demonstrated the induction of a specific CTL response against multiple melanoma peptides [10,11]. However,, there is still some controversy over the efficacy of multiple epitope-based vaccinations and Smith *et al.* [25] demonstrated that, although polyepitope vaccines are an effective way of priming polyvalent CTLs, continual stimulation with polyepitope vaccines might restrict CTL induction as a result of immunodominance. The results of our study are thought to answer that question, but testing of the peptide cocktail vaccine in more patients will be needed.

To refine the quality and protocol of the tumor-specific immunotherapy for clinical trials, the prediction of clinical response in an individual is important [26] and should be discussed. In our study, the correlation between immunological parameters and clinical response was investigated in a limited number of cases.

First of all, as to HLA expression in the tumor, patients 1, 2, 6 and 7 were positive, and patients 4 and 5 were negative. HLA-negative cases showed a progression of the tumor. Even in positive cases, patient 7 turned negative in the course of DC therapy, showing tumor progression.



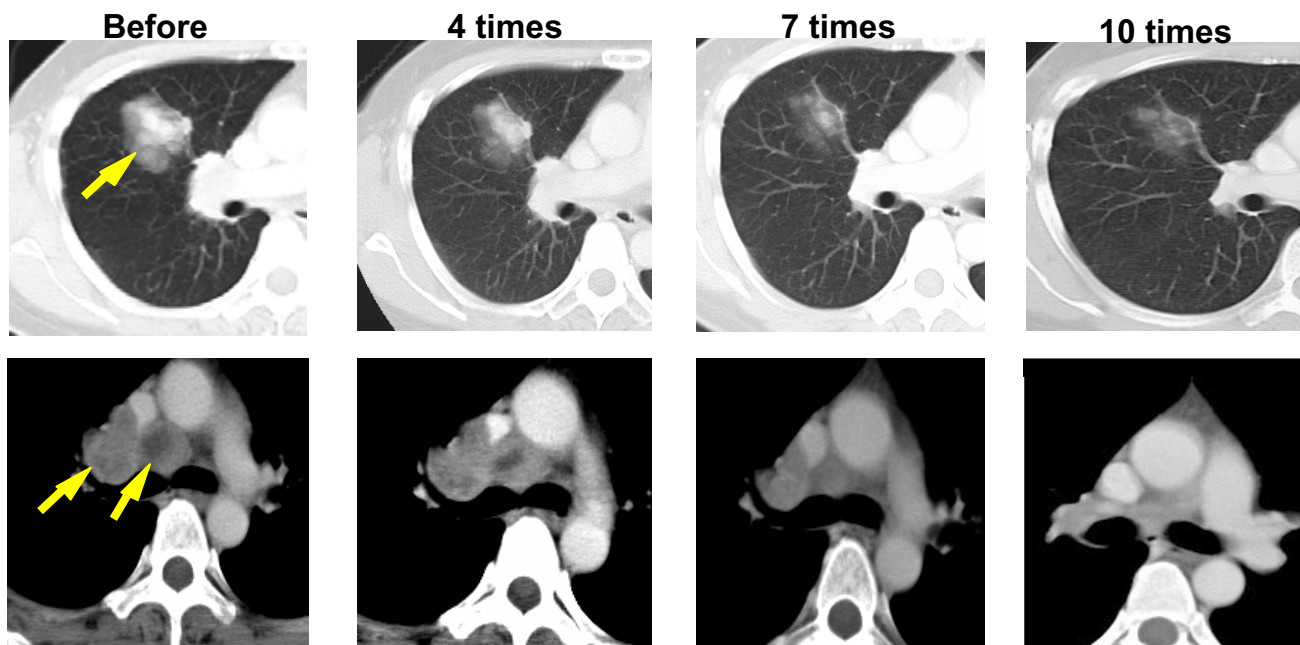
**Figure 2**  
 CTL responses in the course of DC injections in 6 evaluable cases. Patients 1, 2 and 6 were responders and patients 4, 5 and 7 were non-responders. Responders (cases 1,6) showed remarkable CTL expansion in PBLs compared with before DC vaccination. In contrast, non-responders (patients 4,5) showed no significant CTL responses except in patient 7.

Loss of HLA expression in melanoma is reported to be a complex phenomenon associated with melanoma antigen loss [27],  $\beta$ 2-microglobulin gene mutation [28] or loss of heterozygosity (LOH) in chromosome 6 and may lead to tumor progression and metastasis. As to patient 7, considering that the melanoma antigen expression was maintained, the functional expression of  $\beta$ 2-microglobulin should be investigated. All the other HLA-positive cases showed CR, PR and SD, respectively. There was a tendency for HLA expression to be associated with tumor response, and some researchers reported a positive correlation of HLA-expression to tumor response in immunotherapy against melanoma. However, despite the positive correlation of HLA-expression in the tumor with anti-

tumor response, Nestle et al. demonstrated that HLA-expression in the tumor did not correlate to survival in melanoma patients [29].

Second, the amplitude of the CTL response in the ELISPOT assay seems to be another key factor predicting anti-tumor response. Patients 1, 6 and 7 showed large responses to peptide cocktail in ELISPOT, and patients 2, 4 and 5 showed small responses. The former exhibited a remarkable regression of tumor except patient 7. On the other hand, the latter showed a poor response. There was a likely tendency that the amplitude of the CTL response was associated with tumor regression. Also, it was difficult to predict when immunological responses like CTL induc-





**Figure 3**

Impact of DC vaccines on metastatic lesions of the lung in responder patient 1. Upper and lower panels show a lung and hilar lymph node metastatic lesion (arrow), respectively. The CT scan was made before therapy and after 4, 7 and 10 DC vaccinations.

tion start to be activated *in vivo* during DC vaccination, and this question needs to be answered. In the present study, because of a limited number of patients given DC vaccines, the tendency that HLA-class I protein expression in the tumor and the amplitude of ELISPOT responses are seemingly associated with tumor regression is not convincing.

Finally, in order to improve tumor response in the present study, there are still some issues regarding clinical DC preparation. First of all, the purity of CD14<sup>+</sup> cells after Opti-prep separation is still low and may not be reproducible. Therefore, other clinical grade-monocyte separation methods using an elutriator or negative selection with CD2 and CD19 MoAbs [30] should be tried. Second, considering that the amplitude of the CTL response was associated with tumor regression, and that even a remarkable increase of CTL frequency inevitably diminished in spite of the repetition of DC vaccinations, it seems to be crucial to maintain increased CTL frequency in blood leading to TIL in the tumor and expand more than enough to develop a substantial number of memory CD8<sup>+</sup> CTL in lymph nodes. Such a novel method will be needed to develop an effective cancer vaccine.

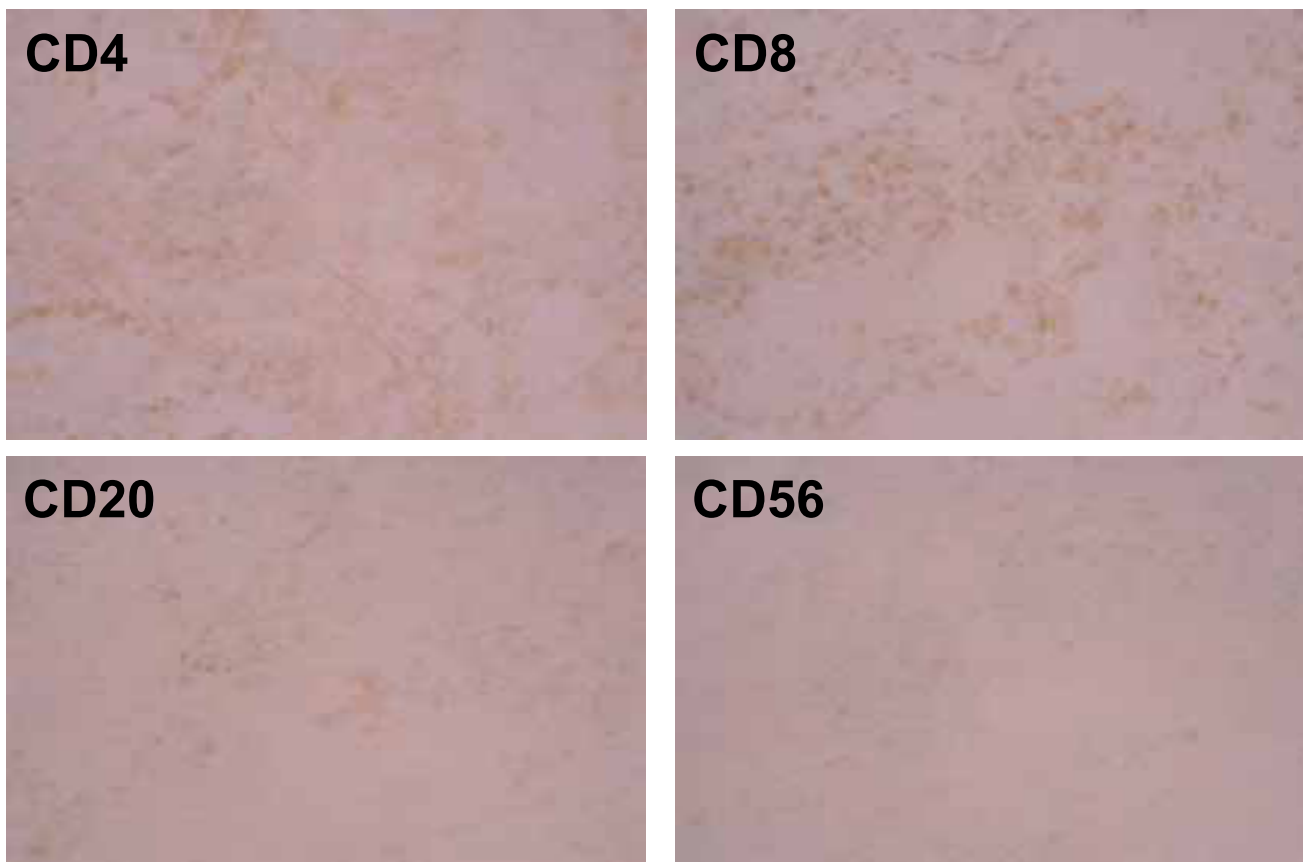
### Conclusions

In the present study, we investigated the effect of dendritic cell (DC)-based immunotherapy on metastatic melanoma patients with HLA-A2 or A24 genotype. Nine cases of metastatic melanoma were enrolled into a phase I study using HLA-A2 or A24-restricted peptide cocktail-pulsed DCs. All 6 evaluable cases showed positive immunological responses to more than 2 melanoma peptides in an ELISPOT assay. Clinical response through DC injections was as follows : 1CR, 1 PR, 1SD and 6 PD. All 59 DC injections in the phase I study were safely administered to patients. These results suggested that peptide cocktail-treated DC-based immunotherapy had the potential for utilizing as one of therapeutic tools against HLA-A2 or A24<sup>+</sup> metastatic melanoma.

### Abbreviations

DC, dendritic cell ; HLA, human leukocyte antigen ; GM-CSF, granulocyte macrophage-colony-stimulating factor ; IL, interleukin ; KLH, Keyhole limpet hemocyanin ; CTL, cytotoxic T cell ; DTH, delayed-type hypersensitivity ; CR, complete remission ; PR, partial remission ; SD, stable disease ; PD, progressive disease ; RT-PCR, reverse transcription-polymerase chain reaction ; IFN, interferon ; PBMC, peripheral blood mononuclear cell.





**Figure 4**

Phenotype analysis of lymphocytes infiltrating the tumor site in responder patient I. Obvious infiltration of a larger number of CD4<sup>+</sup> or CD8<sup>+</sup> T cells and a small number of CD20<sup>+</sup> B cells is shown. Indirect staining using anti-CD4, CD8, CD20 or CD56 MoAb as primary Ab and goat anti-mouse Ab as secondary Ab was performed. Magnification × 200.

### Competing interests

The authors declare that they have no competing interests.

### Authors' contributions

YA participated in the design of the study and drafting the manuscript and were responsible for completing the study. RT, NI, MS, YH carried out apheresis and cell processing and were responsible for DC production. AY and NY were responsible for the clinical side of the study. IK, IN, KT and KM participated in the design of the study and performed biological assays. YT and KY reviewed the manuscript. All authors read and approved the final manuscript.

### Acknowledgements

We would like to thank Ms. Takikawa, Mr. Kuromi and Ms. Kajimura for their excellent technical assistance. This work was partly supported by Grants in Aid from the Ministry of Health, Labour and Welfare for Cancer

Research (9–32 and 10–28) and the Second-Term Comprehensive 10-year Strategy of Cancer Control.

### References

1. Renkvist N, Castelli C, Robbins PF, Parmiani G: **A listing of human tumor antigens recognized by T cells.** *Cancer Immunol Immunother* 2001, **50**:3-15.
2. Kawakami Y, Eliyasu S, Sakaguchi K, Robbins PF, Rivoltini L, Yannelli JR, Appella E, Rosenberg SA: **Identification of the immunodominant peptides of the MART-1 human melanoma antigen recognized by the majority of HLA-A2-restricted tumor infiltrating lymphocytes.** *J Exp Med* 1994, **180**:347-352.
3. Bakker AB, Marland G, de Boer AJ, Huijbens RJ, Danen HJ, Adema GJ, Figdor CG: **Generation of antimelanoma cytotoxic T lymphocytes from healthy donors after presentation of melanoma-associated antigen-derived epitopes by dendritic cells *in vitro*.** *Cancer Res* 1995, **55**:5330-5334.
4. Wölfel T, van Pel A, Brichard V, Schneider J, Seliger B, Büschenfelde KH, Boon T: **Two tyrosinase nonapeptides recognized on HLA-A2 melanomas by autologous cytolytic T lymphocytes.** *Eur J Immunol* 1994, **24**:759-764.
5. Kawashima I, Huddon SJ, Ysai V, Southwood S, Takesako K, Appella A, Celis E: **The multi-epitope approach for immunotherapy for cancer: identification of several CTL epitopes from vari-**

- ous tumor-associated antigens expressed on solid epithelial tumors. *Hum Immunol* 1998, **50**:1-14.
6. Van der Bruggen P, Basti J, Gajewski T, Coulie PG, Boel P, de Smet C, Traversari C, Townsend A, Boon T: **A peptide encoded by human gene MAGE-3 and presented by HLA-A2 induces cytolytic T lymphocytes that recognize tumor cells expressing MAGE-3.** *Eur J Immunol* 1994, **24**:3038-3043.
  7. Thurner B, Haendle I, Roder C, Dieckmann D, Keikavoussi P, Jonuleit H, Bender A, Maczek C, Schreiner D, von den Driesch P, Brocker EB, Steinman RM, Enk A, Kampgen E, Schuler G: **Vaccination with mage-3A1 peptide-pulsed mature, monocyte-derived dendritic cells expands specific cytotoxic T cells and induces regression of some metastases in advanced stage IV melanoma.** *J Exp Med* 1999, **6**:1669-1678.
  8. Panelli MC, Wunderlich J, Jeffries J, Wang E, Mixon A, Rosenberg SA, Marincola FM: **Phase I study in patients with metastatic melanoma of immunization with dendritic cells presenting epitopes derived from the melanoma-associated antigens MART-1 and gp100.** *J Immunother* 2000, **23**:487-498.
  9. Lau R, Wang F, Jeffery G, Marty V, Kuniyoshi J, Bade E, Ryback ME, Weber J: **Phase I trial of intravenous peptide-pulsed dendritic cells in patients with metastatic melanoma.** *J Immunother* 2001, **24**:66-78.
  10. Nestle FO, Aljagic S, Gilliet M, Sun Y, Grabbe S, Dumme R, Burg G, Schadendorf D: **Vaccination of melanoma patients with peptide- or tumor lysate-pulsed dendritic cells.** *Nat Med* 1998, **4**:328-332.
  11. Banchereau J, Palucka AK, Dhodapkar M, Burkeholder S, Taquet N, Rolland A, Taquet S, Coquery S, Wittkowski KM, Bhardwaj N, Pineiro L, Steinman R, Fay J: **Immune and clinical responses in patients with metastatic melanoma to CD34+ progenitor-derived dendritic cell vaccine.** *Cancer Res* 2001, **61**:6451-6458.
  12. Kang X, Kawakami Y, El-Gamil M, Wang R, Sakaguchi K, Yannelli JR, Appella E, Rosenberg SA, Robbins PF: **Identification of a tyrosinase epitope recognized by HLA-A24-restricted, tumor-infiltrating lymphocytes.** *J Immunol* 1995, **155**:1343-1348.
  13. Fujie T, Tahara K, Tanaka F, Mori M, Takesako K, Akiyoshi T: **A MAGE-1-encoded HLA-A24-binding synthetic peptide induces specific anti-tumor cytotoxic T lymphocytes.** *Int J Cancer* 1999, **80**:169-172.
  14. Tahara K, Takasako K, Sette A, Celis E, Kitano S, Akiyoshi T: **Identification of a MAGE-2-encoded human leukocyte antigen-A24-binding synthetic peptide that induces specific antitumor cytotoxic T lymphocytes.** *Clin Cancer Res* 1999, **5**:2236-2241.
  15. Tanaka F, Fujie T, Tahara K, Mori M, Takasako K, Sette A, Celis E, Akiyoshi T: **Induction of antitumor cytotoxic T lymphocytes with a MAGE-3-encoded synthetic peptide presented by human leukocytes antigen-A24.** *Cancer Res* 1997, **57**:4465-4468.
  16. Umamo Y, Tsunoda T, Tanaka H, Matsuda K, Yamaue H, Tanimura H: **Generation of cytotoxic T cell responses to an HLA-A24 restricted epitope peptide derived from wild-type p53.** *Br J Cancer* 2001, **84**:1052-1057.
  17. Arai J, Yasukawa M, Ohminami H, Kakimoto M, Hasegawa A, Fujita S: **Identification of human telomerase reverse transcriptase-derived peptides that induce HLA-A24-restricted antileukemia cytotoxic T lymphocytes.** *Blood* 2001, **97**:2903-2907.
  18. Nukaya I, Yasumoto M, Iwasaki T, Ideno M, Sette A, Celis E, Takesako K, Kato I: **Identification of HLA-A24 epitope peptides of carcinoembryonic antigen which induce tumor-reactive cytotoxic T lymphocyte.** *Int J Cancer* 1999, **80**:92-97.
  19. Akiyama Y, Maruyama K, Nara N, Mochizuki T, Yamamoto A, Yamazaki N, Kawashima I, Nukaya I, Takesako K, Yamaguchi K: **Cytotoxic T cell induction against human malignant melanoma cells using HLA-A24-restricted melanoma peptide cocktail.** *Anticancer Res* 2004, **24**:571-578.
  20. Kuzushima K, Hayashi N, Kimura H, Tsurumi T: **Efficient identification of HLA-A2402-restricted cytomegalovirus-specific CD8(+) T-cell epitopes by a computer algorithm and an enzyme-linked immunospot assay.** *Blood* 2001, **98**:1872-1881.
  21. Sidney J, Southwood S, Mann DL, Fernandez-Vina AA, Newman MJ, Sette A: **Majority of peptides binding HLA-A\*0201 with high affinity crossreact with other A2-supertype molecules.** *Hum Immunol* 2001, **62**:1200-1216.
  22. Nishiyama T, Tachibana M, Horiguchi Y, Nakamura K, Ikeda Y, Takesako K, Murai M: **Immunotherapy of bladder cancer using autologous dendritic cells pulsed with human lymphocyte antigen-A14-specific MAGE-3 peptide.** *Clin Cancer Res* 2001, **7**:23-31.
  23. Sadanaga N, Nagashima H, Mashino K, Tahara K, Yamaguchi H, Ohta M, Fujie T, Tanaka F, Inoue H, Takesako K, Ariyoshi T, Mori M: **Dendritic cell vaccination with MAGE peptide is a novel therapeutic approach for gastrointestinal carcinomas.** *Clin Cancer Res* 2001, **7**:2277-2284.
  24. Ueda Y, Itoh T, Nukaya I, Kawashima I, Okugawa K, Okugawa K, Yano Y, Yamamoto Y, Naitoh K, Shimizu K, Imura K, Fuji N, Fujiwara H, Ochiai T, Itoi H, Sonoyama T, Hagiwara A, Takesako K, Yamaguchi H: **Dendritic cell-based immunotherapy of cancer with carcinoembryonic antigen-derived, HLA-A24-restricted CTL epitope: Clinical outcomes of 18 patients with metastatic gastrointestinal or lung adenocarcinomas.** *Int J Oncol* 2004, **24**:909-917.
  25. Smith SG, Patel PM, Porte J, Selby PJ, Jackson AM: **Human dendritic cells genetically engineered to express a melanoma polyepitope DNA vaccine induce multiple cytotoxic T-cell responses.** *Clin Cancer Res* 2001, **7**:4253-4261.
  26. Whiteside TL, Zhao Y, Tsukishiro T, Elder EM, Gooding WW, Baar J: **Enzyme-linked immunospot, cytokine flow cytometry, and tetramers in the detection of T-cell responders to a dendritic cell-based multi-peptide vaccine in patients with melanoma.** *Clin Cancer Res* 2003, **9**:641-649.
  27. Khong HT, Wang QJ, Rosenberg SA: **Identification of multiple antigens recognized by tumor-infiltrating lymphocytes from a single patient: tumor escape by antigen loss and loss of MHC expression.** *J Immunother* 2004, **27**:184-190.
  28. Paschen A, Mendez RM, Jimenez P, Sucker A, Ruiz-Cabello F, Song M, Garrido F, Schadendorf D: **Complete loss of HLA class I antigen expression on melanoma cells: a result of successive mutational events.** *Int J Cancer* 2003, **103**:759-767.
  29. Hofbauer GF, Burkhart A, Schuler G, Dummer R, Burg G, Nestle FO: **High frequency of melanoma-associated antigen or HLA class I loss does not correlate with survival in primary melanoma.** *J Immunother* 2004, **27**:73-78.
  30. Suen Y, Lee SM, Aono F, Hou S, Loudovaris M, Ofstein G, Bender JG: **Comparison of monocyte enrichment by immuno-magnetic depletion or adherence for the clinical-scale generation of DC.** *Cytotherapy* 2001, **3**:365-372.

Publish with **BioMed Central** and every scientist can read your work free of charge

"BioMed Central will be the most significant development for disseminating the results of biomedical research in our lifetime."

Sir Paul Nurse, Cancer Research UK

Your research papers will be:

- available free of charge to the entire biomedical community
- peer reviewed and published immediately upon acceptance
- cited in PubMed and archived on PubMed Central
- yours — you keep the copyright

Submit your manuscript here:  
[http://www.biomedcentral.com/info/publishing\\_adv.asp](http://www.biomedcentral.com/info/publishing_adv.asp)

