

RESEARCH

Open Access

# Growth differentiation factor-15 and prognosis in acute respiratory distress syndrome: a retrospective cohort study

Brendan J Clark<sup>1\*</sup>, Todd M Bull<sup>1</sup>, Alexander B Benson<sup>1</sup>, Amanda R Stream<sup>1</sup>, Madison Macht<sup>1</sup>, Jeanette Gaydos<sup>1</sup>, Christina Meadows<sup>1</sup>, Ellen L Burnham<sup>1</sup> and Marc Moss<sup>1</sup>, for the ARDS Network Investigators

## Abstract

**Introduction:** We sought to determine whether higher levels of the novel biomarker growth differentiation factor-15 (GDF-15) are associated with poor outcomes and the presence of pulmonary vascular dysfunction (PVD) in patients with acute respiratory distress syndrome (ARDS).

**Methods:** We conducted a retrospective cohort study in patients enrolled in the Acute Respiratory Distress Syndrome Network Fluid and Catheter Treatment (FACT) Trial. Patients enrolled in the FACT Trial who received a pulmonary artery catheter (PAC), had plasma available from the same study day and sufficient hemodynamic data to determine the presence of PVD were included. Logistic regression was used to determine the association between GDF-15 level and 60-day mortality.

**Results:** Of the 513 patients enrolled in the FACT Trial assigned to receive a PAC, 400 were included in this analysis. Mortality at 60 days was significantly higher in patients whose GDF-15 levels were in the third (28%) or fourth (49%) quartile when compared to patients with GDF-15 levels in the first quartile (12%) ( $P < 0.001$ ). Adjusting for severity of illness measured by APACHE III score, the odds of death for patients with GDF-15 levels in the fourth quartile when compared to the first quartile was 4.26 (95% CI 2.18, 10.92,  $P < 0.001$ ). When added to APACHE III alone for prediction of 60-day mortality, GDF-15 levels increased the area under the receiver operating characteristic curve from 0.72 to 0.77. At an optimal cutoff of 8,103 pg/mL, the sensitivity and specificity of GDF-15 for predicting 60-day mortality were 62% (95% CI 53%, 71%) and 76% (95% CI 71%, 81%), respectively. Levels of GDF-15 were not useful in identifying the presence of PVD, as defined by hemodynamic measurements obtained by a PAC.

**Conclusions:** In patients with ARDS, higher levels of GDF-15 are significantly associated with poor outcome but not PVD.

**Keywords:** Acute respiratory distress syndrome, pulmonary vascular dysfunction, risk prediction, growth differentiation factor-15

## Introduction

Growth differentiation factor-15 (GDF-15) is a stress-responsive cytokine and member of the transforming growth factor-beta superfamily [1]. GDF-15 has been extensively studied as a biomarker for cardiovascular disease and was initially described as a marker of poor

outcomes in acute coronary syndromes and chronic left-sided heart failure [2-8]. More recently, GDF-15 expression has shown promise as a biomarker for the identification of and prognosis in pulmonary vascular disorders including pulmonary embolism, idiopathic pulmonary arterial hypertension (PAH), and PAH associated with systemic sclerosis [9,10].

Acute respiratory distress syndrome (ARDS) is a devastating cause of respiratory failure that is commonly accompanied by pulmonary vascular and right ventricular

\* Correspondence: brendan.clark@ucdenver.edu

<sup>1</sup>Department of Medicine, Division of Pulmonary Sciences and Critical Care Medicine, University of Colorado Denver, 12700 East 19<sup>th</sup> Avenue, Aurora, CO 80045, USA

dysfunction [11]. Despite promising data linking GDF-15 with poor outcomes in pulmonary vascular disorders, it has not been measured in patients with ARDS. The development of novel biomarkers may improve our understanding of ARDS by identifying more accurate and precise estimates of risk for poor outcomes in patients with ARDS and elucidating underlying mechanisms that drive these outcomes [12,13]. Biomarkers may also help identify subgroups of patients that respond differently to treatments. Studying therapies targeted to the subgroup of patients who develop pulmonary vascular dysfunction (PVD) in the setting of ARDS is difficult because pulmonary artery catheters are no longer part of the routine care in ARDS [14]. Therefore, a novel biomarker that is easy to measure could identify and target therapies to ARDS patients with PVD.

The Fluid and Catheter Treatment (FACT) Trial enrolled patients with ARDS and demonstrated that fluid management guided by a pulmonary artery catheter (PAC) does not lead to an improvement in clinical outcome when compared to fluid resuscitation guided by a central venous catheter [14,15]. The 501 patients who received a PAC as part of the study protocol now represent the largest available cohort of patients in which to study PVD in ARDS. Given the strong association of GDF-15 with poor outcomes in several diseases, we sought to determine the association between GDF-15 levels and mortality as well as measures of extrapulmonary organ failure in patients with ARDS. Furthermore, given the need for a noninvasive biomarker of PVD in patients with ARDS and the correlation of GDF-15 with elevated right ventricular systolic pressure in patients with scleroderma-associated pulmonary hypertension [10], we sought to determine the utility of GDF-15 levels in the identification of PVD in patients with ARDS enrolled in the FACT Trial. We hypothesized that higher GDF-15 levels would be associated with the presence of PVD and with poor outcomes including mortality and ventilator-free, ICU-free, and organ failure-free days.

## Methods

We conducted a secondary analysis of patients enrolled in the FACT Trial. Full inclusion and exclusion criteria for the study are available as part of the parent manuscript. Importantly, patients with severe chronic obstructive pulmonary disease or 'clinically significant pulmonary hypertension' were excluded [14]. Patients were included in this analysis if they were enrolled in the FACT Trial, randomized to the pulmonary artery catheter (PAC) treatment arm, and received a PAC. Patients were excluded if they did not have sufficient PAC measurements to calculate a pulmonary vascular resistance index (PVRi) and transpulmonary gradient (TPG) or did not have a plasma sample available.

## Measurement of GDF-15

GDF-15 was quantified in the day 1 plasma samples using the Human GDF-15 Quantikine ELISA Kit (R&D Systems, Minneapolis, MN, USA Catalog No. DGD150), following the manufacturer's protocol. All samples were obtained from the National Heart Lung and Blood Institute Biologic Specimen and Data Repository Information Coordinating Center (BioLINCC). Samples were initially diluted 4-fold with the Calibrator Diluent RD5-20 included in the kit, as recommended in the manufacturer's protocol. A subset of the plasma samples were out of the range of detection, and were diluted up to 40-fold with the Calibrator Diluent RD5-20 before requantification. GDF-15 values were adjusted to account for the dilution factor. ELISA plates were read on a VersaMax microplate reader (Molecular Devices; Sunnyvale, CA, USA), using SoftMax Pro v3.1.2 analysis software (MDS Analytical Technologies; Sunnyvale, CA, USA). Plates were read at 450nm, with wavelength correction of 540 nm. All assays were run in duplicate and results were averaged. In 92% of the patients the value of both measurements was within 15% of the average.

## Pulmonary vascular dysfunction

As previously described, we were unable to define PAH by the traditional criteria of a mean pulmonary artery pressure (mPAP) >25 mm Hg because 59% of the 500 patients with PACs in the FACT Trial had a pulmonary arterial occlusion pressure (PAOP) >15 mm Hg [11]. Therefore, we used the PVRi and TPG to define PVD. The PVRi is defined as:  $80 \times (\text{mPAP} - \text{PAOP}) / \text{cardiac index}$ . Normal values for the PVRi are 255 - 285 dynes - sec/cm<sup>-5</sup>/m<sup>2</sup>. We defined PVD as the presence of a PVRi >285 dynes - sec/cm<sup>-5</sup>/m<sup>2</sup> [16]. The TPG is calculated as: (PAP - mean PAOP) with PVD defined as a TPG >12 mm Hg. All hemodynamic measurements were obtained on study day 1 (the same study day that plasma samples were collected).

## Outcome variables

To analyze the association between GDF-15 levels and outcome, we chose 60-day mortality as the primary outcome variable. Secondary outcome variables included the number of extrapulmonary organ failure-free days, the number of ICU-free days, and the number of ventilator-free days. Organ failure-free days were calculated using the Brussels score, as previously described [17]. The Brussels score places renal, coagulation, cardiovascular, central nervous system, and hepatic failure into no organ dysfunction, mild, moderate, severe, or extreme organ dysfunction. Moderate, severe, or extreme organ dysfunction is considered to be clinically significant [17]. Patients were categorized into the presence or absence of clinically significant organ dysfunction for each study day.

The number of days that the patient was alive without organ failure through study day 28 was then calculated as in prior ARDS Network studies [18-20]. To determine the association between GDF-15 levels and the presence of PVD, we used the presence of PVD as the outcome variable, as defined above.

### Statistical analysis

The Wilcoxon rank-sum test or Student's *t*-test were used to analyze differences in continuous variables between patients with and without PVD. Simple linear regression was used to test associations between continuous variables. The chi-square test was used to test for significant differences in categorical variables between groups. To test the association between GDF-15 levels and 60-day mortality, we initially performed logistic regression using log-GDF-15 level as the predictor and death at study day 60 as the outcome using the Hosmer-Lemeshow statistic to ensure goodness of fit. To ease interpretation, we then used quartiles of GDF-15 as the predictor of interest with the first quartile as the control group [4]. *A priori*, we included severity of illness measured by acute physiology and chronic health evaluation (APACHE) III score in our models because our goal was to test the ability of GDF-15 to predict outcomes. To test for an association between GDF-15 levels and organ failure-free days, we constructed separate multiple linear regression models using the log-GDF-15 quartile as the predictor and ICU-free days, ventilator-free days, and organ failure-free days as the outcome variable. *A priori*, we also included APACHE III score as a covariate in this model. We examined plots of residual versus predicted values to ensure that assumptions of linear regressions were met. Finally, to determine whether the association between GDF-15 levels and mortality is independent of other known predictors of poor outcomes in patients with ARDS, we performed a *post hoc* multiple logistic regression additionally adjusting for age, gender, race/ethnicity, baseline creatinine, and ARDS risk factor.

To further describe whether GDF-15 levels significantly add to APACHE III scores as a predictor of 60-day mortality, we also constructed receiver operating characteristic (ROC) curves with APACHE III alone and APACHE III plus GDF-15 level, then calculated the difference in the *c*-statistic. A *c*-statistic is commonly used to quantify the capacity of a biomarker of interest to discriminate between outcomes. Scores range from 0.5 to 1.0 with higher values indicating a better predictive model. For binary outcomes, the *c*-statistic is equivalent to the area under the ROC curve. A difference of 0.05 in the *c*-statistic with and without the biomarker of interest is generally considered to be clinically significant [21]. To examine the association between GDF-15 level and PVD, we constructed an ROC

curve using the log-GDF-15 level as the predictor and the presence of PVD as the outcome.

### Protection of human subjects

The institutional review boards of each participating medical center or hospital approved the original FACT Trial and patients or surrogates provided informed consent prior to enrollment. The study was conducted in accordance with the established ethical standards of the medical centers and with the principles of the Declaration of Helsinki. The ARDS Network provided de-identified data for our analysis. Additional approval for this study was obtained from the Colorado Multiple Institutional Review Board (COMIRB Protocol No 10-0825).

### Results

Of the 513 patients enrolled in the FACT Trial assigned to the PAC arm, 501 received a PA catheter. Of those that received a PAC, 400 patients were eligible for inclusion in this analysis (Figure 1). The most common reason that patients were excluded was the lack of an available day 1 measurement of PVRi or TPG ( $n = 57$ ). There was no significant difference in age, 60-day mortality, severity of illness, or ventilator-free days between the patients who were excluded and the patients who were included in this study. PVD was present in 187 (47%) of the 400 patients when assessed using PVRi and 236 (59%) of the 400 patients when assessed using TPG. The overall 60-day mortality in the cohort was 26.5%. On average, patients who died were older, more likely to have sepsis as an ARDS risk factor, be immunosuppressed, and have higher APACHE III scores, baseline creatinine, and a lower PaO<sub>2</sub>/FiO<sub>2</sub> ratio (Table 1). The median plasma GDF-15 level was 6,167 pg/mL (interquartile range (IQR) 3,585 pg/mL, 10,150 pg/mL) with a range of 880 pg/mL to 23,830 pg/mL. Only three of the 400 patients (0.7%)

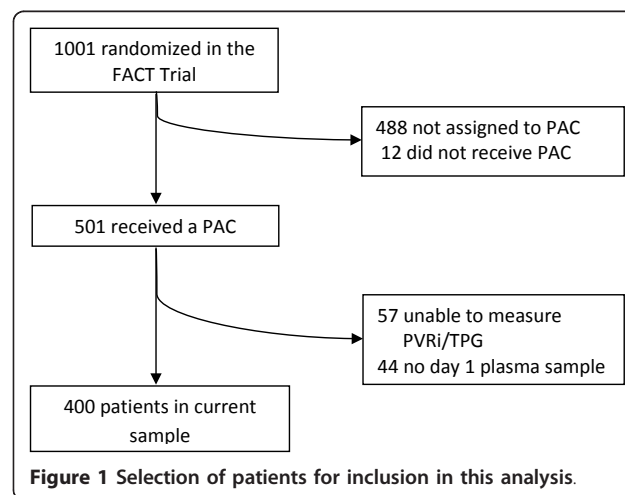


Figure 1 Selection of patients for inclusion in this analysis.

**Table 1** Baseline characteristics of patients included in this analysis.

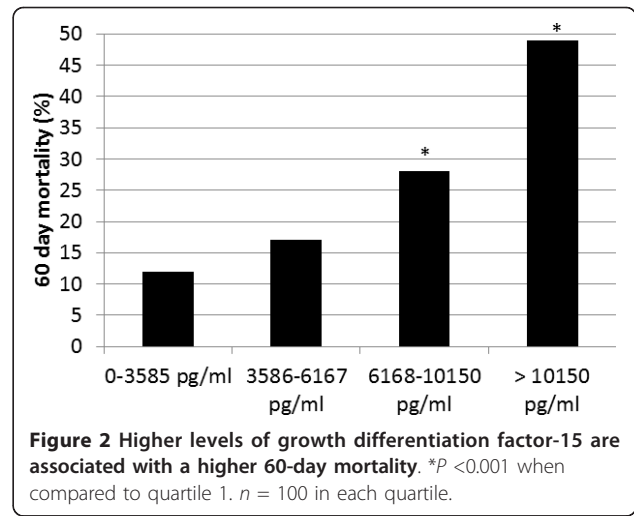
	Alive at 60 days (n = 294)	Dead at 60 days (n = 106)	P value
<b>Age</b>	47 [37,57]	51 [40,65]	0.01
<b>Gender</b> (% male)	51	57	0.35
<b>Race</b> (%)			0.04
White	70	55	
African American	20	30	
Hispanic	7	9	
Other	3	6	
<b>ARDS risk factor</b> (%)			
Sepsis	38	53	0.01
Aspiration	22	18	0.33
Pneumonia	64	67	0.62
Trauma	10	5	0.10
Other	9	6	0.30
<b>Comorbidities</b> (%)			
Diabetes mellitus	18	16	0.27
Cirrhosis	4	3	0.62
Immunosuppression	6	17	<0.01
<b>APACHE III score</b>	86 [67,106]	111 [91,132]	<0.01
<b>Creatinine</b> (mg/dL)	0.9 [0.7, 1.4]	1.3 [0.9, 1.9]	<0.01
<b>PaO2/FiO2</b>	153 [104, 210]	143 [94, 198]	0.17
<b>GDF-15 Level</b> (pg/mL)	5,222 [3,174, 12,748]	9,743 [5,811, 13,462]	<0.001

Continuous variables are presented as median [interquartile range].

had GDF-15 levels under 1,200 pg/mL, the commonly accepted cutoff for normal values [4].

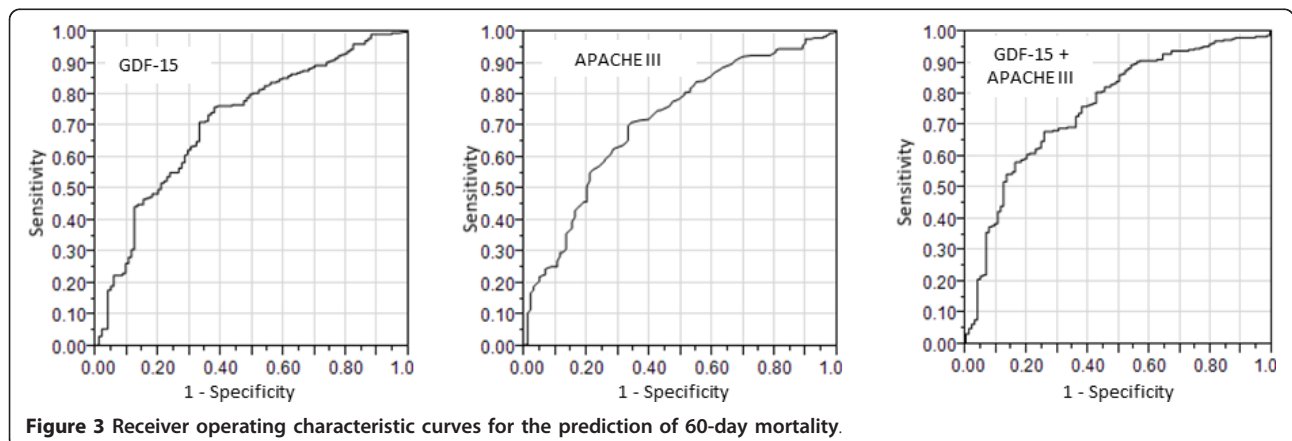
**GDF-15 level and mortality**

Patients whose GDF-15 level was in the third or fourth quartile had a significantly higher 60-day mortality rate when compared to patients whose GDF-15 level was in the first quartile (Figure 2). The c-statistic for log-GDF-15



alone as a predictor of mortality was 0.72 while the c-statistic for APACHE III alone as a predictor of mortality was also 0.72. At an optimal cutoff of 8,103 pg/mL, the sensitivity and specificity of GDF-15 for predicting 60-day mortality were 62% (95% CI 53%, 71%) and 76% (95% CI 71%, 81%), respectively. When log-GDF-15 levels were added to APACHE III score as a predictor of 60-day mortality, the c-statistic for the ROC curve increased from 0.72 to 0.77 (Figure 3). Adjusting for severity of illness measured by APACHE III score, the odds of death at 60 days increased 2.43 times per log increase in GDF-15 (95% CI 1.65, 3.64; *P* <0.001). After adjusting for severity of illness measured by APACHE III score, patients whose GDF-15 level was in the highest quartile had a significantly higher odds of death when compared to patients whose GDF-15 level was in the first quartile (Table 2).

In a multiple logistic regression model additionally adjusted for age, gender, race/ethnicity, baseline serum creatinine, and ARDS risk factor, the odds of death were increased 2.86 times per log increase in GDF-15 (95% CI 1.84, 4.54; *P* <0.001). In a multiple logistic regression



**Figure 3** Receiver operating characteristic curves for the prediction of 60-day mortality.

**Table 2 Adjusted odds ratios for GDF-15 quartile as a predictor of 60-day mortality.**

	Adjusted OR*	95% CI	P value
1 <sup>st</sup> quartile	Reference	–	–
2 <sup>nd</sup> quartile	1.20	0.53, 2.78	0.67
3 <sup>rd</sup> quartile	2.02	0.95, 4.52	0.07
4 <sup>th</sup> quartile	4.28	2.05, 9.42	<0.001

\*Adjusted for severity of illness measured by acute physiology and chronic health evaluation (APACHE) III score.

model adjusting for the same covariates, the association between GDF-15 in the second and third quartiles were unchanged while the odds of death for patients in the fourth quartile of GDF-15 was 5.26 times that of patients in the first quartile (95% CI 2.31, 12.67;  $P < 0.001$ ).

**GDF-15 level and secondary outcomes**

In a univariate analysis, patients with GDF-15 levels in the fourth quartile had significantly few ventilator-free and ICU-free days when compared to patients with GDF-15 levels in the first quartile (Table 3). Similarly, patients with GDF-15 levels in the fourth quartile had fewer cardiovascular, central nervous system (CNS), coagulation, renal, and hepatic failure-free days when compared to patients with GDF-15 levels in the first quartile. After adjusting for severity of illness measured by APACHE III scores, patients with GDF-15 levels in the third and fourth quartile had significantly fewer ICU-free and ventilator-free days when compared to patients with GDF-15 levels in the first quartile (Table 4). After adjusting for severity of illness, patients whose GDF-15 levels were in the third and fourth quartiles had significantly fewer cardiovascular, CNS, coagulation, renal, and hepatic failure-free days when compared to patients in the first quartile (Table 4).

**Table 3 Ventilator-free, ICU-free, and specific organ system failure-free days by GDF-15 quartile.**

	Quartile 1	Quartile 2	Quartile 3	Quartile 4	P value
Ventilator-free days	22 [17,24]	19 [2,23]	12 0[23]	2 0[20]	<0.001
ICU-free days	20 [13,23]	17 [6,21]	10 0[20]	0 0[19]	<0.001
Cardiovascular	26 [21,28]	24 [18,27]	24 [14,26]	19 [1,26]	<0.001
Central nervous system	28 [21,28]	21 [21,28]	21 0[28]	8 0[21]	<0.001
Coagulation	28 [28,28]	28 [24,28]	28 [14,28]	20 [1,28]	<0.001
Renal	28 [28,28]	28 [27,28]	28 [2,27]	14 [2,27]	<0.001
Hepatic	28 [28,28]	28 [25,28]	28 [18,28]	15 [2,28]	<0.001

Data are presented as median [interquartile range].

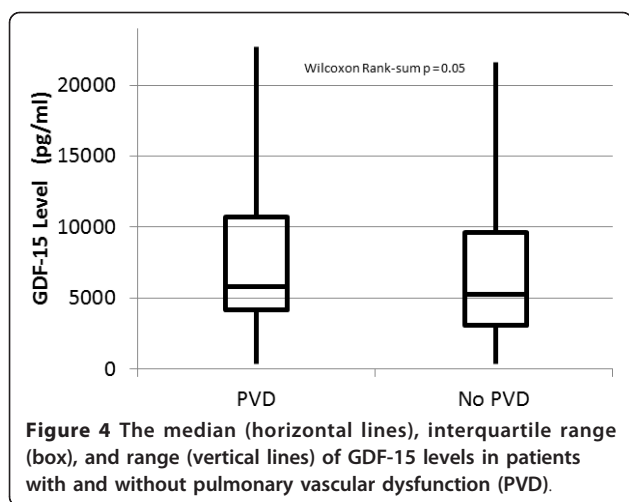
**GDF-15 level as a predictor of pulmonary vascular dysfunction**

On average, for each log increase in GDF-15, PVRi increased by 41.2 dynes - sec/cm<sup>-5</sup>/m<sup>2</sup> (95% CI 17.3, 66.2 dynes - sec/cm<sup>-5</sup>/m<sup>2</sup>;  $r = 0.17$ ;  $P < 0.001$ ). Similarly, for each log increase in GDF-15, TPG increased by an average of 1.33 mm Hg (95% CI 0.45, 2.20 mm Hg;  $r = 0.15$ ;  $P = 0.003$ ). However, there was no significant difference in the median level of GDF-15 in patients with PVD when compared to patients without PVD ( $P = 0.05$ , Figure 4). In a multiple logistic regression model adjusting for age, PaO<sub>2</sub> to FiO<sub>2</sub> ratio, creatinine, and APACHE III score, there was no significant association between the level of GDF-15 and the presence of PVD (adjusted OR 1.21 per log increase in GDF-15; 95% CI 0.86, 1.70;  $P = 0.27$ ).

**Table 4 Results of separate multiple linear regression models with ventilator-free days, ICU-free days, and specific organ failure-free days as the outcome variables and GDF-15 quartile as the predictor variable.**

	Quartile 2			Quartile 3			Quartile 4		
	β*	95% CI	P value	β *	95% CI	P value	β *	95% CI	P value
Ventilator-free days	-2.91	-5.61, -0.21	0.03	-5.27	-8.01, -2.53	<0.01	-6.56	-9.38, -3.74	<0.01
ICU-free days	-1.88	-4.39, 0.62	0.14	-5.25	-7.81, -2.71	<0.01	-6.25	-8.87, -3.63	<0.01
<b>Organ failure-free days</b>									
Cardiovascular	-0.85	-3.32, 1.61	0.50	-2.38	-4.87, 0.12	0.06	-6.03	-8.61, -3.45	<0.01
CNS	-2.03	-4.78, 0.72	0.15	-5.66	-8.44, -2.88	<0.01	-8.69	-11.56, -5.81	<0.01
Coagulation	-0.19	-2.60, 2.22	0.88	-3.03	-5.46, -0.59	0.02	-7.49	-10.01, -4.97	<0.01
Renal	-0.45	-2.87, 1.98	0.72	-4.73	-7.18, -2.27	<0.01	-10.0	-12.56, -7.49	<0.01
Hepatic	-0.01	-2.42, 2.41	0.99	-2.52	-4.96, -0.07	0.04	-8.49	-11.02, -5.97	< 0.01

Patients in GDF-15 quartile 1 served as the control group and, therefore, are not included in the table. \*Parameter estimates shown are the difference when compared to patients in GDF-15 quartile 1 after adjusting for APACHE III score. CNS, central nervous system; 95% CI, 95% confidence interval.



A ROC curve with log-GDF-15 level as the predictor and the presence of PVD as the outcome variable yielded a c-statistic of 0.56. At an optimal cutoff of 5,105 ng/dL, GDF-15 had a sensitivity of 65% (95% CI 58%, 72%) and a specificity of 46% (95% CI 40%, 53%) for the identification of PVD.

## Discussion

In this large cohort of patients with invasive hemodynamic measurements used to define the presence of PVD, we demonstrated a dose-dependent and significant association between plasma GDF-15 levels and mortality in addition to several secondary outcomes in patients with ARDS. Of note, only three (0.7%) patients in this study had a GDF-15 level that was less than 1,200 ng/L, the commonly accepted cutoff for normal. In contrast, we demonstrated that, although plasma GDF-15 levels are associated with higher measurements of TPG and PVRi, there is significant variability in GDF-15 levels between patients with and without PVD. Thus, the sensitivity and specificity of GDF-15 as a single test for the identification of PVD are poor and plasma GDF-15 should not be used as a single biomarker for the identification of PVD in this population. We highlight that we chose to use TPG and PVRi to define PVD so that patients with an elevated PAOP would not be classified as having PVD.

Although many of the effects of GDF-15 remain unknown, recent work has begun to elucidate its role in acute coronary syndromes. In a series of experiments following coronary artery ligation in mice, Kempf and colleagues demonstrate that GDF-15 inhibits polymorphonuclear leukocyte recruitment by interfering with chemokine signaling and activation of integrins [8]. Because PMN recruitment and activation play a vital role in ARDS, it is possible that higher GDF-15 levels are expressed in an effort to attenuate this response

[22]. Other biomarkers that are associated with poor outcomes have mechanisms that should be beneficial. For example, brain natriuretic peptide (BNP) has a sympathoinhibitory effect in patients with congestive heart failure [23]. However, higher plasma levels of BNP are a poor prognostic indicator in congestive heart failure [24-27]. A limitation of our study is that we did not measure proinflammatory cytokines. In the absence of this information, and without a more definitive understanding of the effects of GDF-15, it is not clear what mediates the association between GDF-15 and poor outcomes. GDF-15 may impair neutrophil recruitment and chemokine signaling thus leading to deleterious effects in ARDS. However, future basic, translational or clinical work would be necessary to determine whether GDF-15 mediates poor outcomes in ARDS.

In prior studies, several biomarkers have been associated with mortality in patients with ARDS including surfactant protein D [28], interleukin-8 [29], soluble tumor necrosis factor receptor-1 [30], von Willebrand factor [31], and soluble intracellular adhesion molecule-1 [32]. When combined into a panel, these biomarkers significantly improve risk prediction by APACHE III alone, increasing the area under the curve (AUC) from 0.680 to 0.747 in the derivation cohort and from 0.767 to 0.793 in a validation cohort [12]. It is of interest that GDF-15 alone increased the AUC by 0.05 in our study. However, it is not clear how GDF-15 would perform in a validation cohort. Furthermore, we cannot draw any conclusions regarding the performance of GDF-15 relative to other prognostic biomarkers in ARDS.

As highlighted in discussions by Ware, Calfee and colleagues [12,13], there are at least two important reasons to refine the ability to provide a precise prognosis for patients with ARDS. First, in large randomized controlled trials, the mortality in control groups has declined over time. In the three most recent ARDS network studies, mortality in the control group ranged from 16 to 23% [33-35]. While this may be due to important advancements in the care of patients with ARDS, it creates significant logistical challenges for the conduct of future treatment trials. Specifically, absent treatments that demonstrate a dramatic improvement in mortality, randomized controlled trials that have sufficient power to demonstrate a difference in outcomes may be cost prohibitive. Therefore, the ability to select a population with a higher mortality but who may still benefit from treatment may become more imperative. The ability to do this with the greatest precision offers the opportunity to advance clinical research in ARDS through the cost-efficient conduct of treatment trials.

Second, future therapies for ARDS may have significant undesired side effects that place patients at additional risk for poor outcomes. In that case, the ability to develop an accurate and precise estimate of mortality

for a given patient may help weigh the risks and benefits of a treatment and, therefore, identify patients most likely to derive an overall benefit. Such an approach has been used to treat acute coronary syndromes in the form of the Thrombolysis in Myocardial Infarction (TIMI) risk score. Of note, GDF-15 may provide prognostic information above and beyond the information provided by the TIMI risk score highlighting its ability to independently improve mortality prediction for other patient populations [2].

There are important limitations to this study. First, although the plasma samples were obtained on the same study day as the invasive hemodynamic measurements used to calculate the PVRI, the half-life of GDF-15 is only 20 minutes. The timing of plasma collection relative to hemodynamic measurements was not collected in the FACT Trial. Therefore, the utility of GDF-15 as a biomarker for the identification of PVD in patients with ARDS may have been obscured in our study. Furthermore, because GDF-15 measurements were obtained at a single point in time, we cannot make inferences regarding GDF-15 levels later in the course of disease. For example, persistently elevated GDF-15 levels may be more strongly correlated with poor outcomes. Second, we did not validate GDF-15 as a predictor of outcomes in ARDS in a separate cohort. This would be necessary before drawing any conclusions regarding the clinical utility of GDF-15 as a predictor of outcomes in patients with ARDS. Third, the patients in this cohort were enrolled in a randomized controlled trial. Thus, there could be a selection bias that could limit the ability to generalize our findings to patients with ARDS in general. Finally, nearly all of the patients included in this analysis had moderate ARDS by Berlin criteria [36]. Therefore, our findings may not apply to patients with mild or severe ARDS.

## Conclusion

In patients with ARDS enrolled in the FACT Trial who received a PAC, we demonstrated that higher plasma GDF-15 levels are associated with an increased mortality and fewer ventilator-free, ICU-free, and organ failure-free days. Further studies are needed to understand how GDF-15 performs as a risk predictor in a separate cohort and to understand how GDF-15 performs relative to other known biomarkers for poor outcomes in patients with ARDS.

## Key messages

- Higher levels of growth differentiation factor-15 are associated with poor outcomes in patients with ARDS including a higher odds of death at 60 days, fewer ICU-free and ventilator-free days, and fewer organ failure-free days.

- Although GDF-15 levels are associated with transpulmonary gradient and pulmonary vascular resistance index, GDF-15 was not useful as a single biomarker for the identification of PVD in patients with ARDS.

- The timing of GDF-15 measurements relative to hemodynamic measurements in this study is not known. Thus, GDF-15 levels may be better at identifying the presence of PVD than we report.

- Future studies are needed to validate the usefulness of GDF-15 as a prognostic biomarker and to compare its utility relative to other known biomarkers in patients with ARDS.

## Abbreviations

AUC: area under the curve; APACHE: acute physiology and chronic health evaluation; ARDS: acute respiratory distress syndrome; BNP: brain natriuretic peptide; CNS: central nervous system; ELISA: enzyme-linked immunosorbent assay; FACT: Fluid and Catheter Treatment; GDF-15: growth differentiation factor-15; IQR: interquartile range; mPAP: mean pulmonary arterial pressure; PAC: pulmonary artery catheter; PAH: pulmonary arterial hypertension; PAOP: pulmonary artery occlusion pressure; PVD: pulmonary vascular dysfunction; PVRI: pulmonary vascular resistance index; ROC: receiver operating characteristic; TIMI: thrombolysis in myocardial infarction; TPG: transpulmonary gradient.

## Authors' contributions

BJC helped conceive and design the study, acquire, analyze, and interpret the data, and drafted and revised the manuscript. TMB helped conceive and design the study, acquire, analyze, and interpret the data, and revise the manuscript. ABB and MMA helped with interpretation of the data and revision of the manuscript. ARS helped with interpretation of the data and revision of the manuscript. JG and CM performed all GDF-15 measurements and helped draft the manuscript. ELB helped with interpretation of the data and manuscript revision. MM helped with the conception and design of the study, data analysis and interpretation, and manuscript revision. All authors read and approved the final manuscript.

## Competing interests

TMB, ELB, and MM have received grant funding from the National Heart Lung, and Blood Institute. TMB received an investigator-initiated grant from United Therapeutics. TMB serves on the advisory board for Actelion.

## Acknowledgements

This work was paid for by grant 2 K24 HL089223 06 (MMo principal investigator) and project N01 HR 56167-5-0-0 both funded through the National Heart Lung and Blood Institute. MMA, BJC, and ABB were supported by training grant T32HL007085 for portions of this study period. ABB is supported by grant 1 K23 HL108991 01A1 from the National Heart Lung and Blood Institute. MMA and ABB acknowledge the generous support of the NIH Loan Repayment Program through the National Heart Lung and Blood Institute and BJC recognizes the generous support of the NIH Loan Repayment Program through the National Institute on Alcohol Abuse and Alcoholism.

Received: 13 December 2012 Revised: 11 March 2013

Accepted: 24 May 2013 Published: 24 May 2013

## References

1. Bootcov MR, Bauskin AR, Valenzuela SM, Moore AG, Bansal M, He XY, Zhang HP, Donnellan M, Mahler S, Pryor K, Walsh BJ, Nicholson RC, Fairlie WD, Por SB, Robbins JM, Breit SN: **MIC-1, a novel macrophage inhibitory cytokine, is a divergent member of the TGF-beta superfamily.** *Proc Natl Acad Sci USA* 1997, **94**:11514-11519.
2. Kempf T, Bjorklund E, Olofsson S, Lindahl B, Allhoff T, Peter T, Tongers J, Wollert KC, Wallentin L: **Growth-differentiation factor-15 improves risk**

- stratification in ST-segment elevation myocardial infarction. *Eur Heart J* 2007, **28**:2858-2865.
3. Kempf T, Horn-Wichmann R, Brabant G, Peter T, Allhoff T, Klein G, Drexler H, Johnston N, Wallentin L, Wollert KC: **Circulating concentrations of growth-differentiation factor 15 in apparently healthy elderly individuals and patients with chronic heart failure as assessed by a new immunoradiometric sandwich assay.** *Clin Chem* 2007, **53**:284-291.
  4. Kempf T, von Haehling S, Peter T, Allhoff T, Ciccoira M, Doehner W, Ponikowski P, Filippatos GS, Rozentyp P, Drexler H, Anker SD, Wollert KC: **Prognostic utility of growth differentiation factor-15 in patients with chronic heart failure.** *J Am Coll Cardiol* 2007, **50**:1054-1060.
  5. Wollert KC: **Growth-differentiation factor-15 in cardiovascular disease: from bench to bedside, and back.** *Basic Res Cardiol* 2007, **102**:412-415.
  6. Wollert KC, Kempf T, Lagerqvist B, Lindahl B, Olofsson S, Allhoff T, Peter T, Siegbahn A, Venge P, Drexler H, Wallentin L: **Growth differentiation factor 15 for risk stratification and selection of an invasive treatment strategy in non ST-elevation acute coronary syndrome.** *Circulation* 2007, **116**:1540-1548.
  7. Wollert KC, Kempf T, Peter T, Olofsson S, James S, Johnston N, Lindahl B, Horn-Wichmann R, Brabant G, Simoons ML, Armstrong PW, Califf RM, Drexler H, Wallentin L: **Prognostic value of growth-differentiation factor-15 in patients with non-ST-elevation acute coronary syndrome.** *Circulation* 2007, **115**:962-971.
  8. Kempf T, Zarbock A, Widera C, Butz S, Stadtmann A, Rossaint J, Bolomini-Vittori M, Korf-Klingebiel M, Napp LC, Hansen B, Kanwischer A, Bavendiek U, Beutel G, Hapke M, Sauer MG, Laudanna C, Hogg N, Vestweber D, Wollert KC: **GDF-15 is an inhibitor of leukocyte integrin activation required for survival after myocardial infarction in mice.** *Nat Med* 2011, **17**:581-588.
  9. Lankeit M, Kempf T, Dellas C, Cuny M, Tapken H, Peter T, Olschewski M, Konstantinides S, Wollert KC: **Growth differentiation factor-15 for prognostic assessment of patients with acute pulmonary embolism.** *Am J Respir Crit Care Med* 2008, **177**:1018-1025.
  10. Meadows CA, Risbano MG, Zhang L, Geraci MW, Tuder RM, Collier DH, Bull TM: **Increased expression of growth differentiation factor-15 in systemic sclerosis-associated pulmonary arterial hypertension.** *Chest* 2011, **139**:994-1002.
  11. Bull TM, Clark B, McFann K, Moss M: **Pulmonary vascular dysfunction is associated with poor outcomes in patients with acute lung injury.** *Am J Respir Crit Care Med* 2010, **182**:1123-1128.
  12. Calfee CS, Ware LB, Glidden DV, Eisner MD, Parsons PE, Thompson BT, Matthay MA: **Use of risk reclassification with multiple biomarkers improves mortality prediction in acute lung injury.** *Crit Care Med* 2011, **39**:711-717.
  13. Ware LB, Koyama T, Billheimer DD, Wu W, Bernard GR, Thompson BT, Brower RG, Standiford TJ, Martin TR, Matthay MA: **Prognostic and pathogenetic value of combining clinical and biochemical indices in patients with acute lung injury.** *Chest* 2010, **137**:288-296.
  14. Wheeler AP, Bernard GR, Thompson BT, Schoenfeld D, Wiedemann HP, deBoisblanc B, Connors AF Jr, Hite RD, Harabin AL: **Pulmonary-artery versus central venous catheter to guide treatment of acute lung injury.** *N Engl J Med* 2006, **354**:2213-2224.
  15. Wiedemann HP, Wheeler AP, Bernard GR, Thompson BT, Hayden D, deBoisblanc B, Connors AF Jr, Hite RD, Harabin AL: **Comparison of two fluid-management strategies in acute lung injury.** *N Engl J Med* 2006, **354**:2564-2575.
  16. Zapol WM, Snider MT: **Pulmonary hypertension in severe acute respiratory failure.** *N Engl J Med* 1977, **296**:476-480.
  17. Bernard GR: **The Brussels Score.** *Sepsis* 1997, **1**:43-44.
  18. **Ventilation with lower tidal volumes as compared with traditional tidal volumes for acute lung injury and the acute respiratory distress syndrome. The Acute Respiratory Distress Syndrome Network.** *N Engl J Med* 2000, **342**:1301-1308.
  19. Brower RG, Lanken PN, MacIntyre N, Matthay MA, Morris A, Ancukiewicz M, Schoenfeld D, Thompson BT, National Heart L, Blood Institute ACTN: **Higher versus lower positive end-expiratory pressures in patients with the acute respiratory distress syndrome.** *N Engl J Med* 2004, **351**:327-336.
  20. Steinberg KP, Hudson LD, Goodman RB, Hough CL, Lanken PN, Hyzy R, Thompson BT, Ancukiewicz M, National Heart L, Blood Institute Acute Respiratory Distress Syndrome Clinical Trials N: **Efficacy and safety of corticosteroids for persistent acute respiratory distress syndrome.** *N Engl J Med* 2006, **354**:1671-1684.
  21. Ho JE, Wang TJ: **Growth differentiation factor 15: a canary in a coal mine?** *Clin Chem* 2012, **58**:3-5.
  22. Grommes J, Soehnlein O: **Contribution of neutrophils to acute lung injury.** *Mol Med* 2011, **17**:293-307.
  23. Brunner-La Rocca HP, Kaye DM, Woods RL, Hastings J, Esler MD: **Effects of intravenous brain natriuretic peptide on regional sympathetic activity in patients with chronic heart failure as compared with healthy control subjects.** *J Am Coll Cardiol* 2001, **37**:1221-1227.
  24. Stanek B, Frey B, Hulsmann M, Berger R, Sturm B, Strametz-Juranek J, Bergler-Klein J, Moser P, Bojic A, Hartter E, Pacher R: **Prognostic evaluation of neurohumoral plasma levels before and during beta-blocker therapy in advanced left ventricular dysfunction.** *J Am Coll Cardiol* 2001, **38**:436-442.
  25. Anand IS, Fisher LD, Chiang YT, Latini R, Masson S, Maggioni AP, Glazer RD, Tognoni G, Cohn JN: **Changes in brain natriuretic peptide and norepinephrine over time and mortality and morbidity in the Valsartan Heart Failure Trial (Val-HeFT).** *Circulation* 2003, **107**:1278-1283.
  26. de Groote P, Dagorn J, Soudan B, Lamblin N, McFadden E, Bateurs C: **B-type natriuretic peptide and peak exercise oxygen consumption provide independent information for risk stratification in patients with stable congestive heart failure.** *J Am Coll Cardiol* 2004, **43**:1584-1589.
  27. Berger R, Huelsman M, Strecker K, Bojic A, Moser P, Stanek B, Pacher R: **B-type natriuretic peptide predicts sudden death in patients with chronic heart failure.** *Circulation* 2002, **105**:2392-2397.
  28. Eisner MD, Parsons P, Matthay MA, Ware L, Greene K: **Plasma surfactant protein levels and clinical outcomes in patients with acute lung injury.** *Thorax* 2003, **58**:983-988.
  29. Parsons PE, Eisner MD, Thompson BT, Matthay MA, Ancukiewicz M, Bernard GR, Wheeler AP: **Lower tidal volume ventilation and plasma cytokine markers of inflammation in patients with acute lung injury.** *Crit Care Med* 2005, **33**:1-6, discussion 230-232.
  30. Parsons PE, Matthay MA, Ware LB, Eisner MD: **Elevated plasma levels of soluble TNF receptors are associated with morbidity and mortality in patients with acute lung injury.** *Am J Physiol Lung Cell Mol Physiol* 2005, **288**:L426-431.
  31. Ware LB, Eisner MD, Thompson BT, Parsons PE, Matthay MA: **Significance of von Willebrand factor in septic and nonseptic patients with acute lung injury.** *Am J Respir Crit Care Med* 2004, **170**:766-772.
  32. Calfee CS, Eisner MD, Parsons PE, Thompson BT, Conner ER Jr, Matthay MA, Ware LB: **Soluble intercellular adhesion molecule-1 and clinical outcomes in patients with acute lung injury.** *Intensive Care Med* 2009, **35**:248-257.
  33. Matthay MA, Brower RG, Carson S, Douglas IS, Eisner M, Hite D, Holets S, Kallet RH, Liu KD, MacIntyre N, Moss M, Schoenfeld D, Steingrub J, Thompson BT: **Randomized, placebo-controlled clinical trial of an aerosolized beta(2)-agonist for treatment of acute lung injury.** *Am J Respir Crit Care Med* 2011, **184**:561-568.
  34. Rice TW, Wheeler AP, Thompson BT, deBoisblanc BP, Steingrub J, Rock P: **Enteral omega-3 fatty acid, gamma-linolenic acid, and antioxidant supplementation in acute lung injury.** *JAMA* 2011, **306**:1574-1581.
  35. Rice TW, Wheeler AP, Thompson BT, Steingrub J, Hite RD, Moss M, Morris A, Dong N, Rock P: **Initial trophic vs full enteral feeding in patients with acute lung injury: the EDEN randomized trial.** *JAMA* 2012, **307**:795-803.
  36. Force ADT, Ranieri VM, Rubenfeld GD, Thompson BT, Ferguson ND, Caldwell E, Fan E, Camporota L, Slutsky AS: **Acute respiratory distress syndrome: the Berlin Definition.** *JAMA* 2012, **307**:2526-2533.

doi:10.1186/cc12737

**Cite this article as:** Clark et al.: Growth differentiation factor-15 and prognosis in acute respiratory distress syndrome: a retrospective cohort study. *Critical Care* 2013 **17**:R92.