

Research article

Open Access

***Serratia marcescens* internalization and replication in human bladder epithelial cells**

Ralf Hertle*¹ and Heinz Schwarz²

Address: ¹Microbiology/Membranphysiology, University of Tübingen, Germany and ²Max Planck Institute for Developmental Biology, Tübingen, Germany

Email: Ralf Hertle* - ralf.hertle@mikrobio.uni-tuebingen.de; Heinz Schwarz - heinz.schwarz@mpg-tuebingen.de

* Corresponding author

Published: 09 June 2004

Received: 30 January 2004

BMC Infectious Diseases 2004, 4:16

Accepted: 09 June 2004

This article is available from: <http://www.biomedcentral.com/1471-2334/4/16>

© 2004 Hertle and Schwarz; licensee BioMed Central Ltd. This is an Open Access article: verbatim copying and redistribution of this article are permitted in all media for any purpose, provided this notice is preserved along with the article's original URL.

Abstract

Background: *Serratia marcescens*, a frequent agent of catheterization-associated bacteriuria, strongly adheres to human bladder epithelial cells in culture. The epithelium normally provides a barrier between luminal organisms and the interstitium; the tight adhesion of bacteria to the epithelial cells can lead to internalization and subsequent lysis. However, internalisation was not shown yet for *S. marcescens* strains.

Methods: Elektronmicroscopy and the common gentamycin protection assay was used to assess intracellular bacteria. Via site directed mutagenesis, an hemolytic negative isogenic *Serratia* strain was generated to point out the importance of hemolysin production.

Results: We identified an important bacterial factor mediating the internalization of *S. marcescens*, and lysis of epithelial cells, as the secreted cytolysin ShIA. Microtubule filaments and actin filaments were shown to be involved in internalization. However, cytolysis of eukaryotic cells by ShIA was an interfering factor, and therefore hemolytic-negative mutants were used in subsequent experiments. Isogenic hemolysin-negative mutant strains were still adhesive, but were no longer cytotoxic, did not disrupt the cell culture monolayer, and were no longer internalized by HEp-2 and RT112 bladder epithelial cells under the conditions used for the wild-type strain. After wild-type *S. marcescens* became intracellular, the infected epithelial cells were lysed by extended vacuolation induced by ShIA. In late stages of vacuolation, highly motile *S. marcescens* cells were observed in the vacuoles. *S. marcescens* was also able to replicate in cultured HEp-2 cells, and replication was not dependent on hemolysin production.

Conclusion: The results reported here showed that the pore-forming toxin ShIA triggers microtubule-dependent invasion and is the main factor inducing lysis of the epithelial cells to release the bacteria, and therefore plays a major role in the development of *S. marcescens* infections.

Background

The opportunistic pathogen *Serratia marcescens* is a common cause of urinary tract and ocular lens infections. It has also been linked with endocarditis, osteomyelitis, septicemia, wound and respiratory tract infections [12]. There

have been frequent reports of *S. marcescens* outbreaks in intensive care and neonatal care units [3,8,11,29]. Potential virulence factors involved in this pathogenicity are proteases, a nuclease, a lecithinase, and the hemolysin, all of which are secreted by the bacterium. A 56-kDa serine

protease from *S. marcescens* has been shown to promote keratitis by cleaving IgG, IgA, and lysozyme [16]. The best-studied pathogenicity factor is the hemolysin Sh1A, which causes hemolysis of human and animal erythrocytes [32] and the release of the inflammatory mediators histamine and leukotrienes from leukocytes [18]. A previous study [24] has shown an increase in the pathogenicity of *Escherichia coli* strain 536/21 after transformation with the *S. marcescens* hemolysin genes. The renal colonization of this strain was more than five times higher than that of the Sh1A-negative recipient strain in an experimental rat pyelonephritis model. In addition, this hemolysin has been shown to be cytotoxic to epithelial cells in culture [15]. These data imply a major role of the hemolysin in pathogenicity; however, the experiments have been mostly carried out with the purified hemolysin protein. Recently, it has been shown in a *Caenorhabditis elegans* infection model that a Sh1A-negative mutant is no longer pathogenic [20]. Although there are frequent reports of nosocomial *Serratia* outbreaks, the molecular mechanisms of *S. marcescens* pathogenicity in vivo are still poorly understood.

The first step in infection is adhesion to the target tissue surface. *S. marcescens* has the ability to attach to hydrophobic surfaces. Tight adhesion to a variety of surfaces, mainly by hydrophobic interaction, has been shown [2,5,7,23]. Adhesion to epithelial cells mediated by the type 1 fimbriae of *S. marcescens* has been described [22,39], and the fimbriae of *S. marcescens* have been shown to contribute to superoxide production [24,26] and phagocytosis [26]. These findings underline the importance of a tight physical contact of *S. marcescens* to the target cell in pathogenicity.

Bacterial species capable of secreting a homologous cytolysin are *Proteus mirabilis*, *Edwardsiella tarda*, and *Haemophilus ducreyi*. *P. mirabilis* adheres to urinary tract tissues by fimbriae. Invasion of *P. mirabilis* after adherence is mainly determined by their „swarming motility" [1]. *Edwardsiella tarda* has also been shown to be intracellular [17]. We are not aware of any report in the literature showing any strain of *S. marcescens* with an invasive phenotype. In a parallel study, we have shown that invasive *S. marcescens* cells adhere to the bladder carcinoma cell line RT112 and other epithelial cells mainly via type I fimbriae [14]. Here, we showed that *S. marcescens* strains with a reduced adhesive phenotype were also reduced in their invasiveness. Invasion was not only influenced by the adhesion capacity, but also by the expression of the cytolysin. Hence, we discovered a new feature of the opportunistic pathogen *S. marcescens* – the invasiveness in various human epithelial cell lines.

Methods

Bacterial strains, plasmids, growth conditions, and epithelial cell lines

The bacterial strains, plasmids, and epithelial cell lines used in this study are listed in Table 1. Bacterial cells were grown in TY medium consisting of 0.8% tryptone [Difco Laboratories], 0.5% yeast extract, and 0.5% NaCl at pH 7.0.

Cell cultures

Cultures of HEp-2 cells [ATCC CCL 23] were maintained in Dulbecco's minimal essential medium [DMEM] supplemented with 5% fetal bovine serum without antibiotics. RT112 cells [bladder carcinoma cell line] were maintained in Waymouth's medium supplemented with 10% fetal bovine serum without antibiotics. HeLa [ATCC CCL 2] and Hec1-B [ATCC HTB 113] cells were maintained in RPMI medium supplemented with 10% fetal bovine without antibiotics. Cells were grown in 75-cm² flasks at 37°C under a 5% CO₂, humidified atmosphere. Confluent stock cultures were trypsinized and seeded in 96-well culture plates [Corning Costar, Wiesbaden, Germany] and incubated until confluent.

Construction of plasmid pRSM03 carrying sh1B/sh1A internal sequences for site-directed mutagenesis

The kanamycin box from plasmid pUC4-K was excised with *SalI* and ligated into *SalI*-digested plasmid pGP704, yielding pRSM01 [5.0 kb, Ap^R, Km^R], which was introduced into *Escherichia coli* strain SM10[λpir] by transformation. The gene fragment encoding the C-terminal domain of Sh1B [from position 654 to 1670 in *sh1B*], the intergenic region including the promoter of *sh1A* [from position 1671 to 1718] and the N-terminal domain of Sh1A [from position 1719 to 2486] was generated by excising a 1.832-kb *SphI* fragment from pRO2 and ligating this fragment into the *SphI* site of pRSM01, yielding pRSM02 [6.8 kb]. pRSM02 was digested with *SgrAI* and religated to give pRSM03. This step looses a 741-bp internal DNA fragment, encoding the 22 C-terminal amino acids [aa] from Sh1B and 190 N-terminal aa from Sh1A. The resulting suicide plasmid was introduced into *S. marcescens* strain W225 by conjugation. Out of 800 kanamycin-resistant exconjugants, two were shown to be hemolytic negative. Homologous recombination was confirmed by sequencing chromosomal PCR fragments derived from the *sh1B/sh1A* locus.

For complementation of hemolytic negative *S. marcescens* mutants, a polyvalent expression vector (pMMB67EH) was used. The *sh1B/sh1A* operon from pRO3 was excised with BamHI/HindIII and ligated into pMMB67EH yielding pRSC01. pRSC01 was transformed into *E. coli* HB101 containing the helper plasmid pRK2013. This strain was then conjugated with *S. marcescens* mutant strain SM001.

Table 1: Bacteria, plasmids, and epithelial cells used in this study

Strains/plasmids/cell lines	relevant genotype	source or reference
<i>E. coli</i>		
BL21 [DE3]	F-, <i>hsdS gal</i> , lysogenic for phage λ carrying the phage T7 RNA polymerase gene under <i>lacUV5</i> control	[36]
SM10[λ pir]	<i>thi-1 thr leu tonA lacY supE recA::RP4-2-Tc::mu, Km^r, λpir</i>	[28]
HB101	<i>ara leu pro lac gal rpsL supE44 xyl mtl recA hsd9 (hsdR hsdM)</i>	Stratagene
<i>S. marcescens</i>		
W225	human isolate	[31]
SM001	W225 <i>shlB/shlA::kan</i> , nonhemolytic	this study
SM011	W225 <i>shlB/shlA::kan</i> , nonhemolytic	this study
VA 15854	human isolate	[31]
WI 128	human isolate	[30]
ATCC25419	human isolate	[31]
CDC 04:H4	human isolate	[31]
Other strains		
<i>Proteus mirabilis</i> VI	human isolate	[34]
<i>Pseudomonas aeruginosa</i>	PAOI	S. Lory
Plasmids		
pGP704	Ap ^r ; <i>ori</i> R6 K, <i>mob</i> RP4, MCS of M13tg131	[13]
pRK2013	conjugative IncP helper plasmid	ATCC 37159
pMMB67EH	multi-host cloning and expression vector	ATCC 37622
pRSC01	pMMB67EH <i>shlB shlA</i>	this work
pUC4-K	Ap ^r , Km ^r ; MCS	[37]
pRSM01	Ap ^r , Km ^r ; <i>ori</i> R6 K, <i>mob</i> RP4, MCS of M13tg131	this work
pRSM02	pRSM01, 1.8-kb <i>SphI</i> fragment of pRO2 [<i>shlB'/shlA'</i>]	this work
pRSM03	pRSM02, <i>SgrAI</i> deletion [<i>shlB/shlA</i> , Δ bp 1544–2285]	this work
pRO3	pT7-5 <i>shlB shlA</i>	[28]
pRO2	pT7-5 <i>shlB shlA</i> , Δ aa 256–1578	[28]
Epithelial cells		
RT112	human bladder epithelial carcinoma cell line	MPI Tübingen
HEp-2	human larynx epidermoid carcinoma cell line	ATCC CCL23
HeLa	human cervix epitheloid carcinoma cell line	ATCC CCL 2
Hec1-B	human endometrial adenocarcinoma cell line	ATCC HTB 113

Exconjugants were isolated under carbenicillin restriction (100 μ g/ml) and by eliminating HB101 with 5 μ g/ml tetracycline, against which *S. marcescens* is resistant.

Hemolysis assay

Hemolysis was determined as described previously [6,15]. Briefly, serial dilutions of hemolytic samples were prepared with phosphate-buffered saline [PBS] or HU buffer [6 M urea in 50 mM HEPES [N-2-hydroxyethylpiperazine-N'-2-ethanesulfonic acid], pH 6.8]; 100- μ l aliquots of each dilution were incubated with 1 ml of erythrocyte suspension for 15 min at 22°C and then centrifuged for 1 min in a microcentrifuge. The absorbance at 405 nm [A_{405}] of released hemoglobin was measured spectroscopically.

Adhesion assay

S. marcescens was cultivated for 18 h in TY medium with shaking at 29°C. Bacteria were harvested by centrifugation and washed once with HBSS [Hank's balanced salt

solution, Sigma, St. Louis, Mo.]. Bacteria were resuspended in HBSS and adjusted to an optical density at 578 nm of approximately 0.5 [$\approx 5 \times 10^8$ cells/ml]. A 100- μ l aliquot of a 1:10 dilution of bacteria in HBSS was centrifuged in a 96-well plate onto, with 3.7% paraformaldehyde [PFA] solution [0.2 N HEPES, pH 7.2; 3.7% PFA, Sigma, St. Louis, Mo.] freshly fixed epithelial cells [1×10^5 cells/well]. This equals a multiplicity of infection [MOI] of 50 bacteria per cell. Bacterial suspensions were incubated with the fixed, washed cells in HBSS for 1–2 h at 37°C. Adherent bacteria were determined by MTT [3-(4,5-dimethylthiazol-2-yl)-2,5-diphenyl-tetrazoliumbromide] as described [19]. For microscopy, adherent epithelial cells were cultivated on a cover slip, fixed or left unfixed, and then incubated with bacteria for 1–2 h at 37°C. After washing, the bacteria were fixed with 70% ethanol and stained with 10% Giemsa stain.

Table 3: Effects of various inhibitors on *S. marcescens* W225 invasion of RT112 epithelial cells

Inhibitor	concentration	[%] invasion MOI 2	[%] cytotoxicity MOI 2	[%] invasion MOI 10	[%] cytotoxicity MOI 10
None	-	100	16.0 ± 2.4	100	90.0 ± 1.8
Chloroquine	200 µg/ml	98.0 ± 4.1	19.0 ± 1.8	97.2 ± 3.7	100
Cycloheximide	10 µg/ml	100	15.3 ± 2.6	102 ± 4.4	100
Cytochalasin D	5 µg/ml	54.0 ± 2.3	21.3 ± 2.6	62.0 ± 3.1	100
Dansylcadaverine	500 µM	100	18.2 ± 1.8	100	92.3 ± 5.4
Wortmannin	25 µM	55.0 ± 2.8	48.0 ± 4.4	3.0 ± 0.5	100
Colchizine	0.2 µg/ml	23.0 ± 2.1	7.2 ± 1.3	58.4 ± 6.3	46.8 ± 5.3
Paclitaxel	1 µg/ml	21.5 ± 3.2	11.7 ± 6.3	44.4 ± 5.8	40 ± 2.2

Gentamycin protection assay

HEp-2 and RT112 epithelial cells were cultured in a 24-well plate until they reached confluence. The number of cells was determined. Bacterial cultures were grown to mid-exponential phase and centrifuged. The bacterial cells were resuspended in appropriate volumes of HBSS; 100 µl of the suspension was added to each well of a 24-well plate containing nearly confluent monolayers of $\sim 5 \times 10^4$ epithelial cells per well and incubated for 2 h at 37°C. The gentamycin protection assay was carried out as previously described [21]. The concentration of 100 µg gentamycin/ml used in the cell culture medium was toxic for *Proteus mirabilis* VI, *E. coli* BL21, and all *S. marcescens* strains tested. After incubation, cells were washed three times with PBS and lysed with 1% Triton X-100; the resulting supernatants were serially diluted and the CFU on LB agar plates were determined. The results for each experiment are the average of an assay performed in triplicate and independently repeated three times.

For assaying intracellular replication, HBSS containing 100 µg gentamycin/ml was replaced after 2 h with either HBSS or HBSS containing 4 µg gentamycin/ml. After incubation for 1–2 h in HBSS [with or without gentamycin] under a 5% CO₂ atmosphere at 37°C, the number of viable bacteria in the supernatant and cell-associated bacteria were counted as described above.

Transmission electron microscopy

RT112 cells were incubated with W225 at an MOI of approximately 5 for 60 min and then fixed with 3% glutaraldehyde. Ultra-thin slices of infected epithelial cell monolayers were transferred to carbon-pioloform-coated copper grids [200-mesh], stained by floating for 1 min on a solution of 1% [w/v] uranyl acetate in water, briefly washed in water, and air-dried. The grids were observed with a Philips CM10 transmission electron microscope at an acceleration voltage of 60 kV.

Determination of cytotoxicity using the lactate dehydrogenase [LDH] release assay

Release of LDH from eukaryotic cells indicates permeability of the membrane and cell death. The amount of LDH release was determined with a micro-plate assay according to the instructions of the manufacturer [Roche, Mannheim, Germany].

Incubation with inhibitors

Epithelial cells were incubated with inhibitors [see Table 3] for 1 h at 37°C under a 5% CO₂ atmosphere prior to adding bacteria. The culture supernatant was replaced by HBSS. The epithelial cells were then incubated with bacteria as described for the gentamycin protection assay.

Results

Construction and characterization of isogenic hemolytic-negative mutants of *S. marcescens* W225

To obtain homologous chromosomal recombination with a defective hemolysin gene, a strategy according to Mekalanos [25] was used. Briefly, a C-terminal portion of ShlB and an N-terminal fragment of ShlA were cloned into the suicide vector pGP704, yielding pRSM02. With an additional SgrAI-digest, a deletion of 741 bp between *shlB* and *shlA* was created which included a C-terminal portion of ShlB [22 aa] and an N-terminal portion of ShlA [190 aa]. This plasmid [pRSM03] was introduced into *S. marcescens* strain W225 by conjugation. Homologous chromosomal recombinants were selected for by kanamycin resistance. Hemolytic-negative insertion mutants were screened for by the absence of zones of lysis on blood agar plates and by lack of lysis in a liquid hemolysis assay. After isolation of hemolytic-negative mutants SM001 and SM011, the genomic recombination region in the *shlB/shlA* locus was amplified by PCR and sequenced to confirm the mutation. Mutants SM001 and SM011 were confirmed as having the same insertion in, and deletion of the intergenic *shlB/shlA* region including the promoter and the N-terminal 190 aa of ShlA. The isogenic hemolytic-negative mutant strains of *S. marcescens* W225 [SM001] and [SM011] were non-toxic on cultured

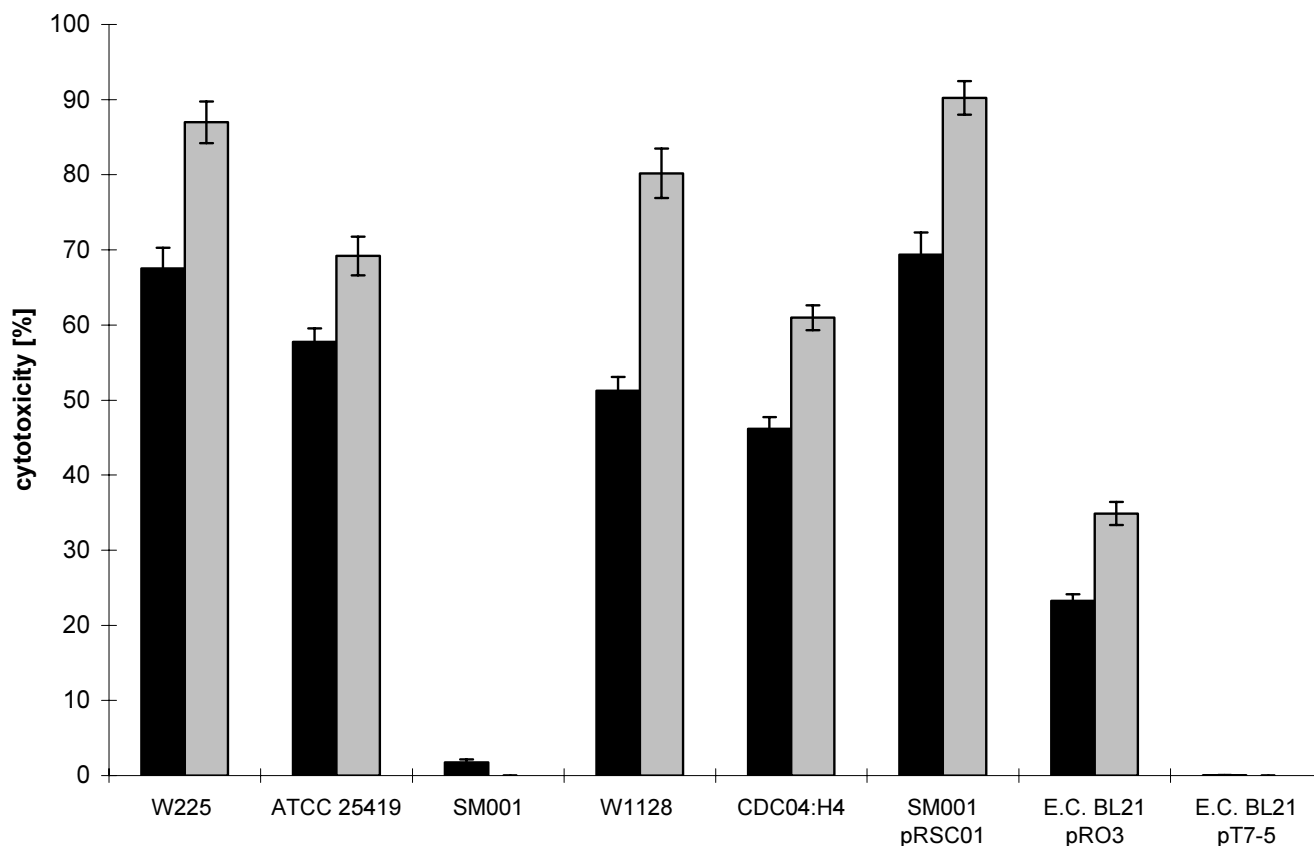


Figure 1

[A] Cytotoxicity [by LDH assay] of different *S. marcescens* strains on RT112 cultured [black bars] and Hep-2 [gray bars] epithelial cells after 1-h incubation at 37°C [MOI 5]. *E. coli* [E.C.] BL21 pT7-5 served as a negative control.

epithelial tissue cells [Fig. 1]. However, SM011 showed a residual cytotoxic activity reproducibly higher than strain SM001 [for unknown reasons] and was therefore no longer examined in this study.

Strain SM001 was then complemented with pRSC01, carrying the *shlB/shlA* operon on the expression plasmid pMMB67EH. Efficient restoration of hemolytic/cytotoxic activity is shown in Fig. 1.

Adhesion of *S. marcescens* to cultured epithelial cells

All *Serratia* strains tested adhered specifically to confluent monolayers of RT112 and HEP-2 cells. However, above an MOI of 10, viable epithelial cells were lysed rapidly within the first 15 min of incubation by the produced hemolysin. The *S. marcescens* hemolysin [ShlA] secretion, together with the tight contact to the epithelial cells, is a serious interfering factor in studies of bacterial adhesion and internalization. Therefore, bacterial adherence was quantified only on fixed cells with an MOI of 50 [Fig. 2]. These

data confirmed the adhesion capacity of our clinical isolates to epithelial cells, but showed strain-specific differences in the yield. An LDH cytotoxicity assay on viable cells showed that less-adherent strains were slightly less cytotoxic at an MOI of 5 [Fig. 1] except hemolytic negative mutant SM001 and *E. coli* BL21 expressing ShlA.

The use of the hemolytic-negative mutant of strain W225 circumvented the cytotoxicity and enabled the role of ShlA in adhesion to be studied. The hemolytic-negative mutant was not altered in adhesion capacity compared to the wild-type, which provided evidence that the hemolysin was not involved in adhesion [Fig. 2] as *E. coli* BL21, pRO3, which secreted activated ShlA into the supernatant with a portion of ShlA remaining cell bound [28], showed a virtually non-adhesive phenotype.

Internalization and protection against gentamycin

To quantify the internalization of *S. marcescens* into epithelial cells, a standard gentamycin protection assay [21]

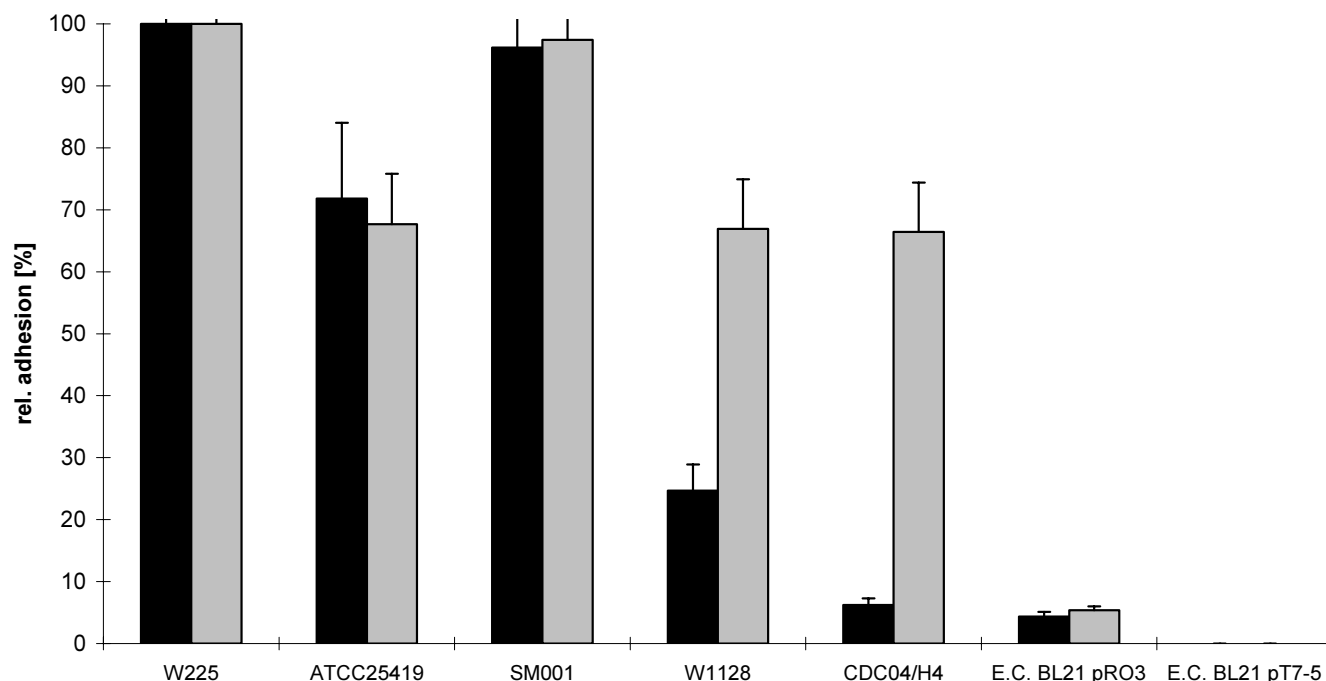


Figure 2

Relative adhesion of different *S. marcescens* strains on fixed RT112 [black bars] and Hep-2 [gray bars] epithelial cells after 1-h incubation at 37°C [MOI 50] detected by the MTT assay. *E. coli* [E.C.] BL21 served as a negative control.

with the clinical *S. marcescens* isolates VA15854, W1128, W225 and CDC04:H4 was used. Non-invasive *E. coli* BL21 was used as a control. The gentamycin protection assay was first done with bacteria on PFA-fixed epithelial cells [MOI 2, 10, and 50]; all bacteria, adherent to epithelial cells or not, were efficiently killed by the procedure [data not shown]. Hence, the bacteria were not protected from gentamycin by tight adhesion or biofilm formation within the 2-h incubation time. Initial attempts to characterize *S. marcescens* host-cell interaction and invasion were confounded by vacuolation and subsequent lysis of the cells induced by secreted and/or cell-bound ShlA [15]. The cytotoxic effect was also confirmed by measuring the cellular ATP level, which markedly decreased within 15 min [data not shown], and an LDH release cytotoxicity assay, which indicated significant cell lysis at an MOI of 10 [Fig. 3]. To avoid the cytotoxicity effects, RT112 and Hep2 epithelial cells were inoculated with *E. coli* BL21 or the *S. marcescens* strains W1128, W225, CDC04:H4, and SM001 at an MOI of approximately 2. After 30 min post-infection at 37°C, the epithelial cells appeared to be intact, and no extended vacuolation was observed by phase-contrast microscopy. After 60 min post-infection, cells appeared compromised, but virtually still intact. Evidence of mostly intact cells was given by negative trypan blue and propidium iodide staining [data not shown]. After 120 min post-

infection, extended vacuolation was seen even with an MOI of 1 to 2, and cell lysis increased, as was also shown by propidium iodide uptake into nuclei and the video taken with these experimental settings http://www.mikro.bio.uni-tuebingen.de/ag_hertle/projects/. Beyond 60 min incubation time, you see an increasing number of extracellular bacteria. These bacteria could either be from extracellular proliferation or from lysed cells which had released their intracellular bacterial load. To minimize bacterial growth, the medium maintaining the epithelial cells contained no serum, glutamine, or glucose [HBSS]. The increase in total bacterial yield after 2 h incubation with the epithelial cells and without gentamycin was about 5 to 10% of that of the inoculum [counted by plating dilutions].

After 2 h of gentamycin treatment, cells were lysed, and viable bacteria were recovered by plating serial dilutions on agar plates. *S. marcescens* strain W225 was the most invasive of the strains tested [Fig. 4]. There were no significant differences in the infection of HEp-2, Hec1-B, or HeLa cells with strain W225 [data not shown]. Only RT112 cells seemed to be slightly more susceptible to *S. marcescens* invasion. Therefore, strain W225 was taken as the model strain on RT112 cells.

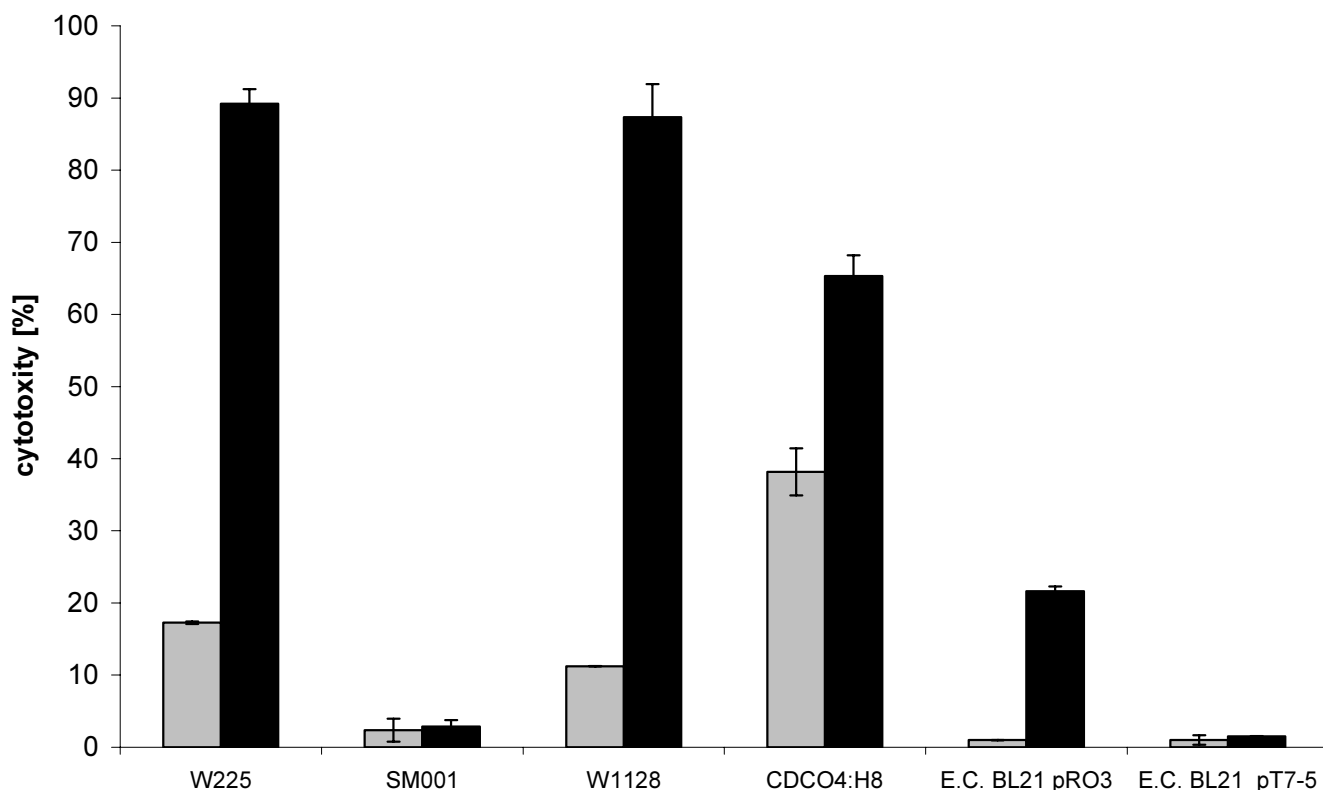


Figure 3
Cytotoxicity [by LDH assay] of different *S. marcescens* strains at an MOI of 2 [gray bars] and an MOI of 10 [black bars] on RT112 epithelial cells.

The observation of intracellular bacteria was verified by electron microscopy of infected monolayers, showing bacteria enclosed in small and large vacuoles [Fig. 6]. Clearly visible bacteria are marked by arrows. Other structure in the vacuoles could not be identified clearly but may be bacteria outside the center of the cutting level.

Invasion is dependent on hemolysin production and adhesion

Owing to the cytotoxicity of strain W225, it was necessary to use an MOI of 2 or below in order to minimize cytotoxicity. The hemolytic-negative derivative of strain W225 defective in hemolysin production and cytotoxicity [strain SM001], enabled bacterium–host interactions to be studied without killing the host cells too early. SM001 was much lower in its invasive ability than the parental strain [Fig. 4]. At a maximal MOI of 2, the mutant strain SM001 entered RT112 cells nearly ninety fold less efficiently than the parental strain W225, even though it adhered at a similar level [Table 2]. The complemented mutant strain SM001 pRSC01 showed about 88% of the wildtype activity in invasion [Fig. 4]. To confirm hemolysin secretion,

the strains were cultured together with human erythrocytes. The lysis kinetics due to hemolysin secretion are shown in Fig. 5. Recombinant hemolysin-producing *E. coli* HB101 [pRSC01] [Fig. 4] or *E. coli* BL21 [pRO3] were not enhanced in adhesion or in invasion [Table 2]. However, at a higher MOI [Table 2], different results were obtained. With hemolytic-negative mutant strain SM001, internalization was 3.3-fold higher at an MOI of 10 compared to the wild-type strain W225. At an MOI of 10, the wild-type strain lysed nearly all epithelial cells during incubation [cytotoxicity in Table 2], which led to a decrease in the amount of viable intracellular bacteria protected against gentamycin. The complemented SM001 pRSC01 showed a slightly lower invasion rate but higher cytotoxicity [Table 2], which may due to the higher level of hemolysin expression with more copies of the expression vector, compared to the wild type W225.

Highly motile bacteria are found inside vacuoles

After 1 h post-infection with an MOI of 2 and following 1-h gentamycin treatment, highly motile bacteria were observed inside medium-sized [15–20 μm] vacuoles. The

Table 2: Invasion, adhesion and cytotoxicity of different bacterial strains at low and high MOI. Invasion: RT112 cells incubated for 2 h, 37°C with bacteria prior to addition of 100 µg/ml gentamicin; adhesion was measured by the MTT assay as described; cytotoxicity was determined at MOI 2 and 10 after 2 h of incubation.

	MOI 2	MOI 10	
Invasion			
<i>S. marcescens</i> W225	5669 ± 213	4234 ± 877	
<i>S. marcescens</i> SM001	64 ± 23	13986 ± 1322	
SM001 pRSC01	5011 ± 197	3698 ± 762	
<i>E. coli</i> BL21 [pRO3]	2 ± 1.3	46 ± 12	
Relative adhesion			
		OD ₄₉₂	[%]
<i>S. marcescens</i> W225	not detected	0.60 ± 0.059	100 ± 9.9
<i>S. marcescens</i> SM001	not detected	0.59 ± 0.076	99.6 ± 12.8
SM001 pRSC01	not detected	0.58 ± 0.112	96.6 ± 18.8
<i>E. coli</i> BL21 [pRO3]	not detected	0.0 ± 0.017	0 ± 2.8
Absolute cytotoxicity [%]			
<i>S. marcescens</i> W225	16 ± 2.4	90 ± 1.8	
<i>S. marcescens</i> SM001	0	7 ± 0.4	
SM001 pRSC01	19 ± 3.2	95 ± 4.3	
<i>E. coli</i> BL21 [pRO3]	0	22 ± 0.4	

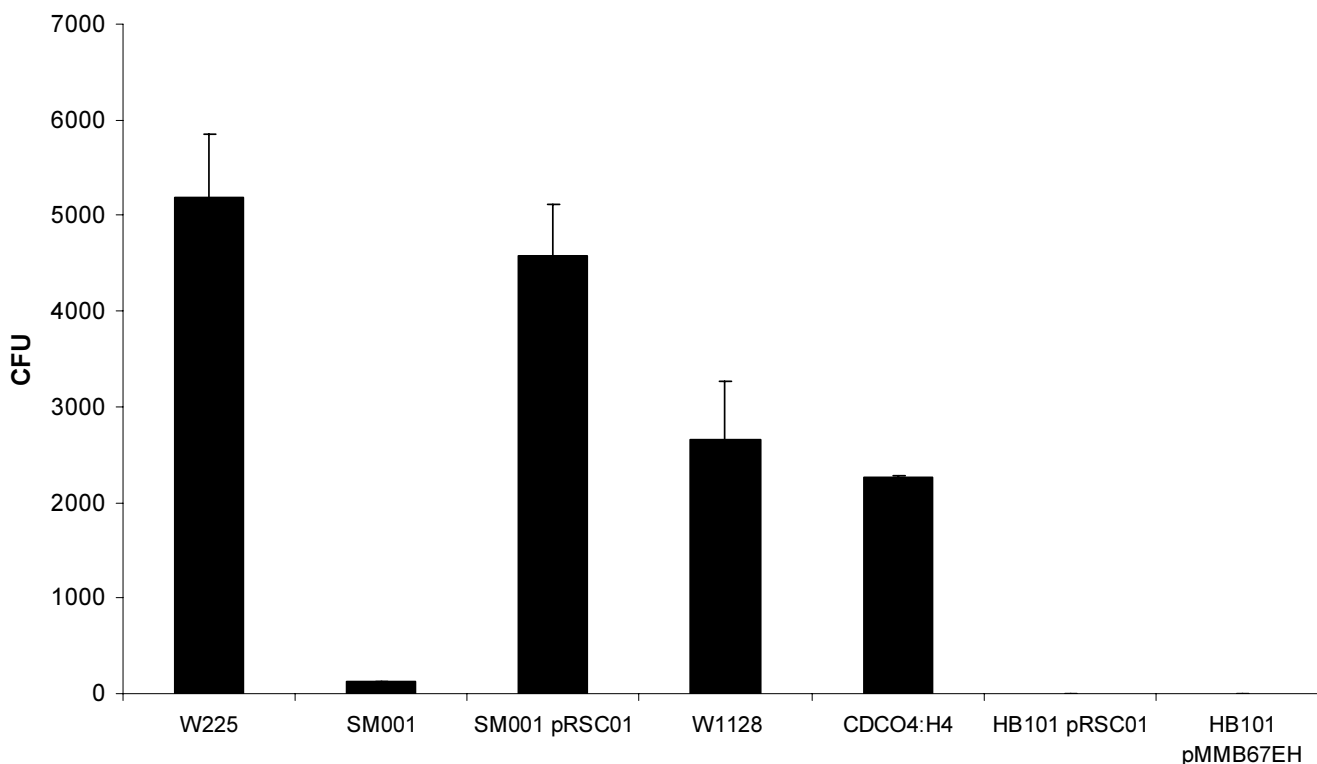


Figure 4
Invasion of different strains in cultured RT112 epithelial cells after 2-h incubation at 37°C at an MOI of 2.

swimming speed of the bacteria [20 ± 5 µm/s] was about three- to fourfold higher inside the vacuoles than outside the cell [see movie at http://www.mikrobio.uni-tuebingen.de/ag_hertle/projects/ or additional file "movie"].

The video shows high motile *S. marcescens* W225 inside RT112 epithelial cell vacuoles. The video is divided in 10 sec scenes. Scene 1: 60 min after infection with MOI of 2 appears like the control except small pinpoint vacuoles;

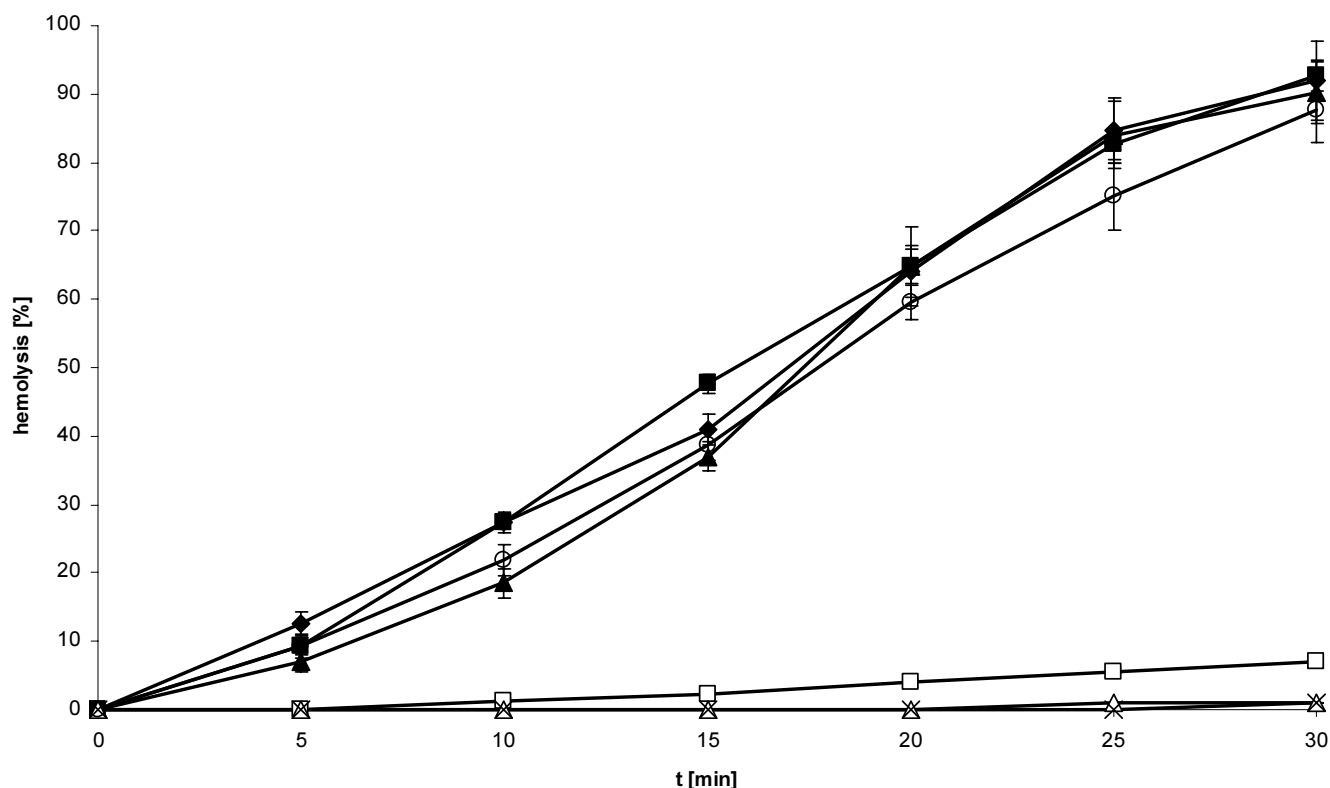


Figure 5

Hemolysis of human erythrocytes in coculture with bacterial cells; (◆)W225; (□)SM001; (■)SM001 pRSC01; (▲)HB101 pRSC01; (△)HB101 pMMB67EH; (○)BL21 pRO3; (×)BL21 pT7-5.

scene 2: 90 min after infection, visible vacuolation with single extracellular bacteria; scene 3: 120 min after infection, extended vacuolation with attached and swimming extracellular bacteria, addition of 100 µg/ml gentamycin; scene 4: 60 min later, osmotic swollen RT112 cells with intracellular bacteria. *S. marcescens* cells, driven by flagellae, changing their swimming direction after hitting the vacuolar membrane; scene 5–7: 90 min after gentamycin addition (210 min after infection), *S.-marcescens*-containing cells were detached from the tissue culture well, and appeared round and short before being osmotically lysed. In these compartments, up to six highly motile bacterial cells were counted. However, most vacuoles contained no bacteria.

Intracellular replication of *S. marcescens*

After 2 h of gentamycin treatment of infected epithelial cells [MOI of approximately 1], the culture medium was changed to HBSS with [4 µg/ml] or without gentamycin. The CFU of the culture supernatant and of the intracellular bacteria were periodically monitored up to 2 h. Owing to lysis of the epithelial cells maintained in HBSS contain-

ing gentamycin, the number of recoverable CFU of intracellular bacteria decreased. The CFU in the supernatant remained almost zero. In contrast, in gentamycin-free HBSS, the CFU in the supernatant increased continuously [data not shown]. The increase of CFU isolated from the adherent cultured cells from the initial 2,000 CFU to 5,500 CFU [Fig. 7] clearly showed that internalized *S. marcescens* cells were able to replicate inside the epithelial cells. The replication factors of intracellular *S. marcescens* cells were estimated to be 2.5 to 2.9/h for W225 compared to 2.5/h for the *Pseudomonas aeruginosa* PAO1 control. However, during the incubation, epithelial cells were lysed by the bacteria, and higher numbers of CFU could be counted in the supernatant without gentamycin [data not shown]. Considering the CFU in the supernatant and cell-bound CFU together, the replication factors were estimated to be 3.4 ± 0.04 /h for wild-type strain W225, 4.0 ± 0.11 /h for mutant SM001 and only 2.6 ± 0.02 /h for the control *P. aeruginosa* PAO1. Internalized hemolytic negative-mutant strain SM001 showed only a slight increase of the bacterial load in the supernatant compared to the isogenic wild-type strain. Despite the initial lower

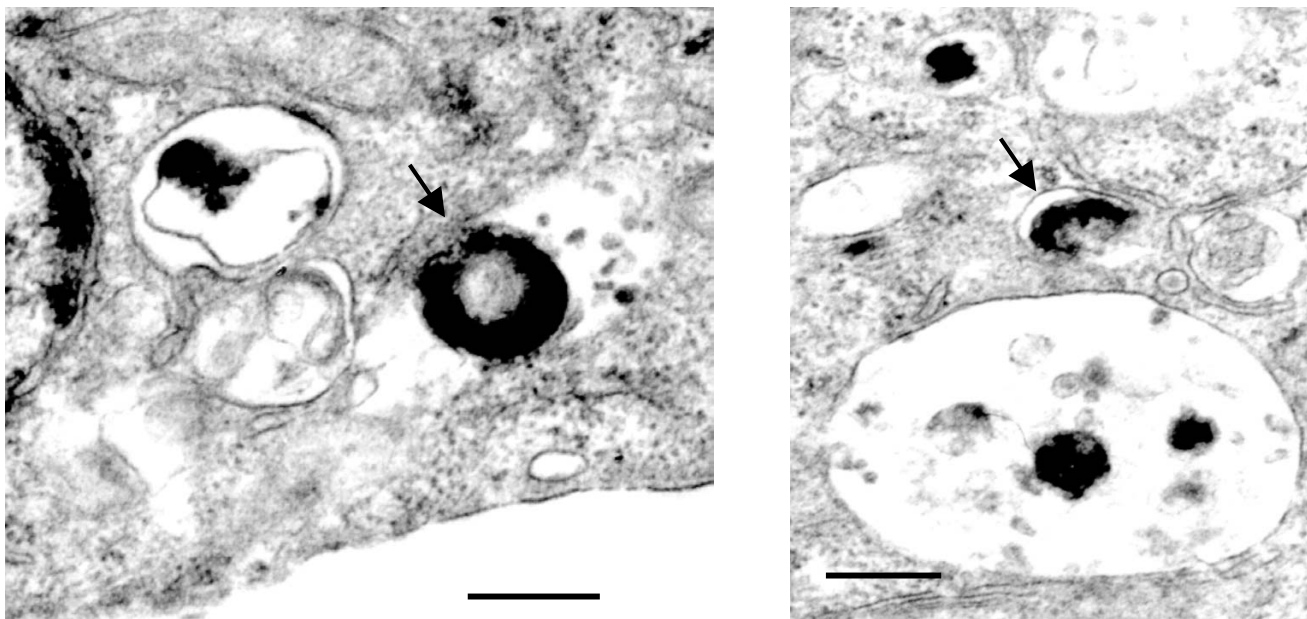


Figure 6

Transmission electron micrographs of adherent *S. marcescens* W225 cells on RT112 epithelial cells and bacteria encapsulated in small and large vacuoles. Cells were incubated 60 min with W225 at an MOI of approx. 5. After significant vacuolisation was visible, cells were fixed with glutaraldehyde. Bacteria are marked by arrows. Bars represent 1 μ m.

internalization level of mutant strain SM001, the proportion of internalized bacteria had a similar doubling time as the wild type W225. However, the number of CFU of mutant SM001 cells in the epithelial cells provided evidence that the hemolysin Sh1A was not necessary for intracellular replication, but might play a role in the release from the cells.

Inhibitors of epithelial cell invasion

To determine the effects of various inhibitors on *S. marcescens* invasion, monolayers of RT112 epithelial cells were preincubated with each of the agents for 1 h. At an MOI of 2 and 10, inhibitors of protein biosynthesis [cycloheximide], receptor recycling [chloroquine] and receptor-mediated endocytosis [monodansylcadaverine] had no effect on RT112 invasion [Table 3]. At MOI 2, wortmannin increased the cytotoxicity of *S. marcescens* W225, and in turn decreased invasion. At MOI 10, virtually no epithelial cell remained intact to protect bacteria from gentamicin. As shown in Table 3, at MOI 2, cytochalasin D [depolymerizes actin filaments] decreased and colchizine [depolymerizes microtubules] and paclitaxel [stabilize "freeze" microtubules] inhibited invasion of *S. marcescens* strain W225 in RT112 epithelial cells. At a higher MOI [10 CFU/cell] colchizine and paclitaxel each decreased the yield of intracellular bacteria compared with epithelial

cells not pretreated with one of these inhibitors. Simultaneously, cytotoxicity was tempered in increase at an MOI 10 [Table 3, right columns]. In contrast, cytochalasin D and wortmannin [vesicle trafficking inhibitor] treatment increased the cytotoxicity significantly even at an MOI of 2 and led to a decrease in viable epithelial cells, which led to a decrease in the number of gentamycin-protected bacteria. Apparently, RT112 epithelial cells were stabilized against the cytotoxic bacteria by inhibitors of microtubule filaments, and more RT112 epithelial cells were still viable despite the bacterial load. Therefore, protecting more intracellular bacteria against gentamycin.

Discussion

S. marcescens as a pathogen shows a tissue-damaging capacity [18,24]. The cytotoxic activity is mainly elicited by the secreted hemolysin/cytotoxin Sh1A [15]. However, the role of Sh1A, secreted directly by the bacteria during infection remained elusive. Another pathogen, *Edwardsiella tarda*, which has a hemolysin homologous to Sh1A, has been studied in more detail [35], and a direct correlation between the presence of hemolysin and invasion in epithelial cells has been shown. Here, *S. marcescens* strains were tested for internalization in RT112 bladder epithelial cells and in HEP-2 cells using a commonly used gentamycin protection assay. *S. marcescens* was found to be

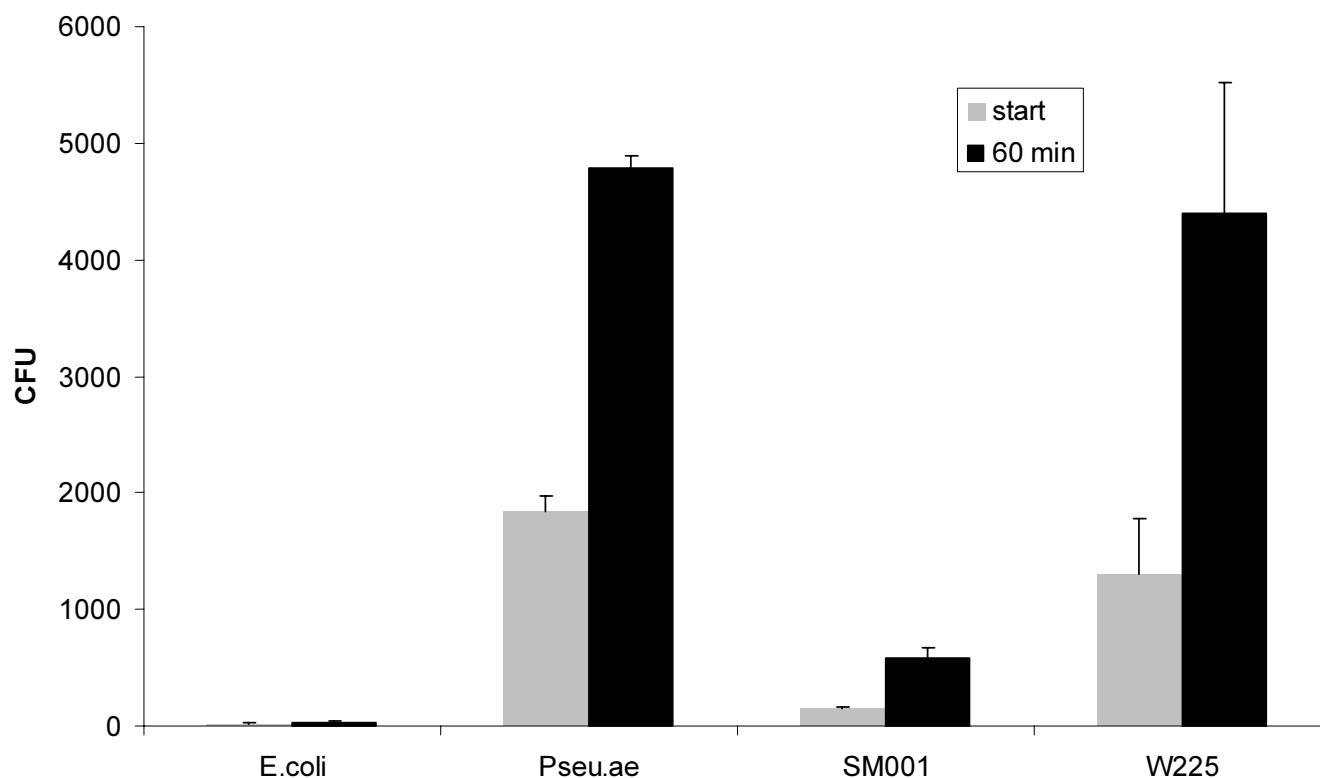


Figure 7

Replication of *S. marcescens* strain W225, hemolytic-negative isogenic mutant of strain W225 [SM001], *E. coli* K12-5K [negative control], and *P. aeruginosa* [positive control] inside RT112 epithelial cells after 60 min [black bars]. Grey bars show the starting values of a MOI of 1 after 2 h treatment with 100 µg/ml gentamycin. Incubation was continued with 4 µg/ml gentamycin for 60 min [black bars].

intracellular. To our knowledge, this is the first report documenting *S. marcescens* as an invasive species. The number of intracellular bacteria was dependent on the particular bacterial strains, which differed in adhesion efficiency, hemolysin production, and the target epithelial cell line. The results showed that two main factors influence invasion: adhesion and cytotoxicity.

One etiological mechanism in a urinary tract infection involves efficient adhesion to the epithelial tissue. To determine whether this mechanism is involved in the *S. marcescens* tissue-cell-culture infection model, the adhesion properties of several clinical isolates of *S. marcescens* were first evaluated.

Adhesion and cytotoxicity properties of *S. marcescens* and closely related organisms are described to some extent in the literature. For *Proteus mirabilis*, fimbriae and properties such as swarming are more important than hemolysin production for host cell invasion [1]. Adhesion to epithelial cells mediated by type 1 fimbriae of *S. marcescens* has

also been reported [22,39]. Fimbriae of *S. marcescens* also contribute to superoxide production [24,26] and phagocytosis [26]. Since *S. marcescens* W225 adhesion to RT112 epithelial cells is mediated by type I fimbriae [14], it is notable that type I fimbriae can function also as invasins [4]. A role of the hemolysin in the adhesion process has not been examined in detail. The secretion of hemolysin interferes in adhesion studies with viable epithelial cells by lysing the cultured cell monolayer. To avoid cell lysis, adhesion has been studied best with fixed epithelial cells. However, the hemolysin is generally cell bound in *S. marcescens* [33]; therefore, Sh1A might contribute to adhesion of the bacteria. To unravel the potential adhesive role of Sh1A, hemolytic-negative isogenic chromosomal mutants of *S. marcescens* strain W225 were created by site-specific mutagenesis. One selected hemolytic-negative mutant, SM001, which lacks the *sh1B/A* intergenic region was not altered in adhesion. This *S. marcescens* W225 mutant was significantly reduced in invasion at an MOI of 1 to 2 and was no longer cytotoxic. Complementation with the wildtype hemolysin genes

rather restored the wildtype phenotype. Mutants of *E. tarda* defective in secretion of the ShlA homologue cytotoxin Eh1A showed a similar phenotype, being no longer cytotoxic or invasive [35]. *E. coli* BL21 transformed with the *shlB/shlA* genes showed only a small increase in adhesion. That means that the hemolysin system is unlikely to act as an adhesion factor. Increasing the bacterial load increases the cytotoxicity, but in turn decreases the countable values of internalized and gentamycin protected bacteria due to lysis. This observation shows evidence for the confounding role of the cytolysin in the measurement of invasion in lytic doses.

It was clearly shown here that secretion of ShlA was the main factor responsible for invasion at physiological low infection doses. The related organism *Haemophilus ducreyi* expresses a cell-associated hemolysin similar to ShlA. Clinical isolates of *H. ducreyi* are invasive for human epithelial cells, and the hemolysin enhances the invasion of HEp-2 cells [38]. As in *S. marcescens*, cytotoxicity interferes in adhesion and invasion assays on viable cells in culture. Hence, ShlA facilitates the internalization and exploitation of the host cell, but other factors may also play a role.

These results lead us to hypothesize that [i] a combination of adhesion and cytotoxicity is essential for invasion, and [ii] the invasiveness is a multi-factorial process in which ShlA plays a major, but also confounding role. Tight adhesion increased the cytotoxicity of the bacterial strains, probably by bringing the cell-bound cytotoxin in close contact to the target membrane. Subsequent perforation of the cell membrane and mediation of host-cell invasion by compromising and subsequent lysing the cells might enable *S. marcescens* to penetrate tissue layers and invade or disseminate in the host organism. This hypothesis is supported by the data of the hemolysin producing *E. coli* strains BL21, pRO3 and HB101 pRSC01. Virtually non-adherent, they showed cytotoxicity [due to expression of ShlA] but no internalization. In addition, the well adherent but hemolytic negative mutant SM001 also showed rather no internalization at an MOI of 2.

Once attached to the epithelial cell, the bacteria were internalized. The cellular requirements of *S. marcescens* internalization in cultured epithelial cells were evaluated by pretreating the cells prior to *Serratia* application with a variety of inhibitors that act on different eukaryotic cellular processes and structures. Invasion of *S. marcescens* W225 in RT112 cells or HEp-2 cells was not inhibited by chloroquine and monodansylcadaverine, compounds known to inhibit receptor recycling, receptor-mediated endocytosis, and vesicle trafficking and therefore bacterial entry [10]. However, the inhibitory result with wortmannin have to be judged concerning the cytotoxicity increasing capacity of this drug. This led to a decrease

of viable tissue cells and therefore to apparent lower CFUs which were not correlated to a decrease in invasion and incorrectly implicated an inhibition of invasion compared to the untreated control. In this case, it is not possible to get a clear answer and the effect of wortmannin has not have to be elucidated further.

Invasion of *S. marcescens* appeared to be dependent on microfilaments, such as actin fibers and microtubules. Disrupting actin filaments with cytochalasin D led to a 46% reduction in intracellular CFU, and colchizine treatment reduced the intracellular CFU to 23–25% of that of the controls. Therefore, only the CFU counted in the background of low cytotoxicity is considered to be valid. Our data showed that the inhibition of tubulin microfilaments by colchizine and paclitaxel resulted in both reduced cytotoxicity and reduced invasion. We considered this to be the only true case where invasion was inhibited because the epithelial cells were still viable at the end of the assay. Paclitaxel [taxol] "freezes" the microtubule network by crosslinking tubulin whereas colchizine depolymerizes tubulin fibers. The inhibition by both colchizine and paclitaxel implied a direct microtubule-driven invagination of membrane-bound bacteria rather than an uptake system involving microtubule filaments and a molecular motor, e.g., dynein or a member of the kinesin family. The movement of the activated motor system along the microtubule linked to a membrane-receptor/bacterium complex could cause invagination of the membrane and internalization of the attached bacterium [27]. Such a system would be inhibited by colchizine, but not by paclitaxel, and was therefore excluded by the results obtained. The inhibitory effect caused by the dissolving of actin microfilaments by cytochalasin D was masked by the increased cytotoxicity and remains to be elucidated further.

In contrast to other bacteria that replicate in the cytoplasm, such as *Shigella flexneri* or *Listeria monocytogenes* [9], *S. marcescens* apparently has no direct effect on actin and does not engage in direct cell-to-cell spreading [unpublished observation]. Furthermore, an infected cell adjacent to uninfected cells was typically observed.

It was clearly shown, that *S. marcescens* W225 and the mutant SM001 replicated intracellularly. However, the value of intracellular replication was changed by the cytotoxicity of *S. marcescens* W225. Because of the lysis of the host cells, the number of gentamycin-protected bacteria decreased with time, and more CFU were isolated from the supernatant. The number of intracellular bacteria might even be higher than counted because gentamycin is lethal to bacteria in damaged and disintegrating cells [depending on the time needed for gentamycin to access the bacteria]. This was taken into account by changing the

concentration of gentamycin from 100 µg/ml to 4 µg/ml or 0 µg/ml. Bacteria, actually released from the epithelial cells, can survive in the supernatant without gentamycin and will form CFU on TY-agar plates. Since virtually all extra cellular bacteria were killed by the gentamycin pre-treatment, the sum of CFU recovered from the supernatant [without or low gentamycin] and the epithelial cells reflects the true increase in bacterial yield. For this reason, the CFU counts in gentamycin-protection assays have to be judged carefully.

Conclusions

To summarize the data on the pathological phenotype of *S. marcescens* on tissue culture cells, cytotoxicity is the major factor. This cytotoxicity is exerted by a close contact of the pathogenic bacteria to the host cell mediated by fimbrial adhesion. The internalization observed at physiologically low bacterial doses was shown to be dependent on ShlA and on dynamic tubulin microfilaments. The cytotoxin ShlA may facilitate the entry but it is not absolutely necessary for internalization as shown by the hemolytic-negative mutant strain. However, one could suggest that cytotoxin production might kill immune cells during inflammation and help the bacterium to escape phagocytosis. This is an interesting hypothesis which future examination will shed more light on the role of this pore forming toxin in the pathogenicity of *S. marcescens*.

Competing interests

None declared.

Authors' contributions

RH is responsible for the initial finding of internalization and carried out all experiments and sample preparations. HS carried out the transmission electron microscopy.

Acknowledgements

We thank Prof. V. Braun for support and helpful discussions. This work was supported by the Deutsche Forschungsgemeinschaft [HE 3110/2-1].

References

- Allison C, Coleman N, Jones PL, Hughes C: **Ability of *Proteus mirabilis* to invade human urothelial cells is coupled to motility and swarming differentiation.** *Infect Immun* 1992, **60**:4740-4746.
- Amako K, Ohshima H, Yasunaka K, Kono K: **Pili mediated agglutination of *Serratia marcescens* in human urine.** *Microbiol Immunol* 1981, **25**:981-992.
- Assadian O, Berger A, Aspöck C, Mustafa S, Kohlhauser C, Hirschl AM: **Nosocomial outbreak of *Serratia marcescens* in a neonatal intensive care unit.** *Infect Control Hosp Epidemiol* 2002, **23**:457-461.
- Baorto DM, Gao Z, Malaviya R, Dustin ML, van der Merwe A, Lublin DM, Au AS: **Survival of FimH-expressing enterobacteria in macrophages relies on glycolipid traffic.** *Nature* 1997, **389**:636-639.
- Bar-Ness R, Rosenberg M: **Putative role of a 70 kDa outer-surface protein in promoting cell-surface hydrophobicity of *Serratia marcescens* RZ.** *J Gen Microbiol* 1989, **135**:2277-2281.
- Bernheimer AV: **Assay of hemolytic toxins.** *Meth Enzymol* 1988, **165**:213-217.
- Coria-Jimenez R, Romero-Olvera J, Celis-Cruz C: **Superficial hydrophobicity in *Serratia marcescens* strains of clinical origin.** *Res Microbiol* 1998, **49**:27-29.
- Esel D, Doganay M, Bozdemir N, Yildiz O, Tezcaner T, Sumerkan B, Aygen B, Selcuklu A: **Polymicrobial ventriculitis and evaluation of an outbreak in a surgical intensive care unit due to inadequate sterilization.** *J Hosp Infect* 2002, **50**:170-174.
- Finlay BB, Falkow S: **Common themes in microbial pathogenicity revisited.** *Microbiol Mol Biol Rev* 1997, **61**:136-169.
- Finlay BB, Falkow S: **Comparison of the invasion strategies used by *Salmonella cholerae-suis*, *Shigella flexneri* and *Yersinia enterocolitica* to enter cultured animal cells: endosome acidification is not required for bacterial invasion or intracellular replication.** *Biochimie* 1988, **70**:1089-1099.
- Fleisch F, Zimmermann-Baer U, Zbinden R, Bischoff G, Arlettaz R, Waldvogel K, Nadal D, Ruef C: **Three consecutive outbreaks of *Serratia marcescens* in a neonatal intensive care unit.** *Clin Infect Dis* 2002, **34**:767-773.
- Hejazi A, Falkiner FR: ***Serratia marcescens*.** *J Med Microbiol* 1997, **46**:903-912.
- Herrero M, de Lorenzo V, Timmis KN: **Transposon vectors containing non-antibiotic resistance selection markers for cloning and stable chromosomal insertion of foreign genes in gram-negative bacteria.** *J Bacteriol* 1990, **172**:6557-6567.
- Hertle R: **Adhesion of *Serratia marcescens* to epithelial cells by type I fimbriae and hydrophobicity.** 2004 in press.
- Hertle R, Hilger M, Weingardt-Kocher S, Walev I: **Cytotoxic action of *Serratia marcescens* hemolysin on human epithelial cells.** *Infect Immun* 1999, **67**:817-825.
- Hume EB, Conerly LL, Moreau JM, Cannon BM, Engel LS, Stroman DW, Hill JM, O'Callaghan RJ: ***Serratia marcescens* keratitis: strain-specific corneal pathogenesis in rabbits.** *Curr Eye Res* 1999, **19**:525-532.
- Janda JM, Abbott SL, Oshiro LS: **Penetration and replication of *Edwardsiella* spp. in HEp-2 cells.** *Infect Immun* 1991, **59**:154-161.
- König W, Faltin Y, Scheffer J, Schöffler H, Braun V: **Role of cell-bound hemolysin as a pathogenicity factor for *Serratia* infections.** *Infect Immun* 1987, **55**:2554-2561.
- Kreft B, Carstensen O, Straube E, Bohnet S, Hacker J, Marre R: **Adherence to and cytotoxicity of *Escherichia coli* for eucaryotic cell lines quantified by MTT [3-[4,5-dimethylthiazol-2-yl]-2,5-diphenyltetrazolium bromide].** *Int J Med Microbiol Virol Parasitol Infect Dis* 1992, **276**:231-242.
- Kurz CL, Chauvet S, Andres E, Aurouze M, Vallet I, Michel GP, Uh M, Celli J, Filloux A, De Bentzmann S, Steinmetz I, Hoffmann JA, Finlay BB, Gorvel JP, Ferrandon D, Ewbank JJ: **Virulence factors of the human opportunistic pathogen *Serratia marcescens* identified by in vivo screening.** *EMBO J* 2003, **22**:1451-1460.
- Lee CA, Jones BD, Falkow S: **Identification of a *Salmonella typhimurium* invasion locus by selection for hyperinvasive mutants.** *Proc Natl Acad Sci USA* 1992, **89**:1847-1851.
- Leranoz S, Orus P, Berlanga M, Dalet F, Vinas M: **New fimbrial adhesins of *Serratia marcescens* isolated from urinary tract infections: description and properties.** *J Urol* 1997, **157**:694-698.
- Mallick SA: **Cell surface hydrophobicity and its relation to outer membrane proteins of *Serratia marcescens*.** *Indian J Exp Biol* 1996, **34**:107-110.
- Marre R, Hacker J, Braun J: **The cell-bound hemolysin of *Serratia marcescens* contributes to uropathogenicity.** *Microbiol Pathogenesis* 1989, **7**:153-156.
- Miller VL, Mekalanos JJ: **A novel suicide vector and its use in construction of insertion mutations: osmoregulation of outer membrane proteins and virulence determinants in *Vibrio cholerae* requires *toxR*.** *J Bacteriol* 1988, **170**:2575-2583.
- Mizunoe Y, Matsumoto T, Haraoka M, Sakumoto M, Kubo S, Kumazawa J: **Effect of pili of *Serratia marcescens* on superoxide production and phagocytosis of human polymorphonuclear leukocytes.** *J Urol* 1995, **154**:1227-1230.
- Oelschlaeger TA, Tall BD: **Uptake pathways of clinical isolates of *Proteus mirabilis* into human epithelial cell lines.** *Microb Pathog* 1996, **21**:1-16.
- Ondraczek R, Hobbie S, Braun S: **In vitro activation of the *Serratia marcescens* hemolysin through modification and complementation.** *J Bacteriol* 1992, **174**:5086-5094.

29. Ostrowsky BE, Whitener C, Bredenberg HK, Carson LA, Holt S, Hutwagner L, Arduino MJ, Jarvis WR: **Serratia marcescens bacteremia traced to an infused narcotic.** *N Engl J Med* 2002, **346**:1529-1537.
30. Poole K, Braun V: **Influence of growth temperature and lipopolysaccharide on hemolytic activity of Serratia marcescens.** *J Bacteriol* 1988, **170**:5146-5152.
31. Ruan Y, Braun V: **Hemolysin as a marker for Serratia.** *Arch Microbiol* 1990, **154**:221-225.
32. Schiebel E, Braun V: **Integration of the Serratia marcescens haemolysin into human erythrocyte membranes.** *Mol Microbiol* 1989, **3**:445-453.
33. Schmitz G, Braun V: **Cell-bound and secreted proteases of Serratia marcescens.** *J Bacteriol* 1985, **161**:1002-1009.
34. Sieben S, Hertle R, Gumpert J, Braun V: **Expression and secretion of Serratia marcescens hemolysin in stable protoplast type L-forms of Proteus mirabilis.** *Arch Microbiol* 1998, **170**:236-242.
35. Strauss EJ, Ghori N, Falkow S: **An Edwardsiella tarda strain containing a mutation in a gene with homology to shIB and hpmB is defective for entry into epithelial cells in culture.** *Infect Immun* 1997, **65**:3924-3932.
36. Studier FW, Moffatt BA: **Use of bacteriophage T7 RNA polymerase to direct selective high-level expression of cloned genes.** *J Mol Biol* 1986, **189**:113-130.
37. Vieira J, Messing J: **The pUC plasmids, an M13mp7-derived system for insertion mutagenesis and sequencing with synthetic universal primers.** *Gene* 1982, **19**:259-268.
38. Wood GE, Dutro SM, Totten PA: **Target cell range of Haemophilus ducreyi hemolysin and its involvement in invasion of human epithelial cells.** *Infect Immun* 1999, **67**:3740-3749.
39. Yamamoto T, Ariyoshi A, Amako K: **Fimbria-mediated adherence of Serratia marcescens strain US5 to human urinary bladder surface.** *Microbiol Immunol* 1985, **29**:677-681.

Pre-publication history

The pre-publication history for this paper can be accessed here:

<http://www.biomedcentral.com/1471-2334/4/16/prepub>

Publish with **BioMed Central** and every scientist can read your work free of charge

"BioMed Central will be the most significant development for disseminating the results of biomedical research in our lifetime."

Sir Paul Nurse, Cancer Research UK

Your research papers will be:

- available free of charge to the entire biomedical community
- peer reviewed and published immediately upon acceptance
- cited in PubMed and archived on PubMed Central
- yours — you keep the copyright

Submit your manuscript here:
http://www.biomedcentral.com/info/publishing_adv.asp

