

The National COVID Cohort Collaborative: Clinical Characterization and Early Severity Prediction

Tellen D. Bennett MD*¹, Richard A. Moffitt PhD², Janos G. Hajagos PhD³, Benjamin Amor PhD⁴, Adit Anand³, Mark M. Bissell⁴, Katie Rebecca Bradwell PhD⁴, Carolyn Bremer BS³, James Brian Byrd MD⁵, Alina Denham PhD⁶, Peter E. DeWitt PhD¹, Davera Gabriel RN⁷, Brian T. Garibaldi MD⁷, Andrew T. Girvin PhD⁴, Justin Guinney PhD⁸, Elaine L. Hill PhD⁶, Stephanie S. Hong BS⁷, Hunter Jimenez BS³, Ramakanth Kavuluru PhD⁹, Kristin Kostka MPH^{10,11}, Harold P. Lehmann MD⁷, Eli Levitt MS¹², Sandeep K. Mallipattu MD³, Amin Manna MEng⁴, Julie A. McMurry MPH¹³, Michele Morris BA¹⁴, John Muschelli PhD⁷, Andrew J. Neumann MBA¹³, Matvey B. Palchuk MD¹⁵, Emily R. Pfaff PhD¹⁶, Zhenglong Qian¹⁷, Nabeel Qureshi BA⁴, Seth Russell MS¹, Heidi Spratt PhD¹⁸, Anita Walden MS^{8,19}, Andrew E. Williams PhD²⁰, Jacob T. Wooldridge MD³, Yun Jae Yoo³, Xiaohan Tanner Zhang MD⁷, Richard L. Zhu MD⁷, Christopher P. Austin MD²¹, Joel H. Saltz MD², Ken R. Gersing MD²¹, Melissa A. Haendel PhD^{19,22}, Christopher G. Chute MD*²³, N3C Consortium⁺

*Corresponding Authors:

Tellen D. Bennett, University of Colorado School of Medicine, University of Colorado, Aurora, CO, USA

(tell.bennett@cuanschutz.edu)

Christopher G. Chute, Johns Hopkins University, 2024 E Monument St, Baltimore, MD 21287, USA

(chute@jhu.edu)

+N3C Consortium author ICJME contributions are still being collected and will be provided at the proof stage for indexing in Medline.

1. Section of Informatics and Data Science, Department of Pediatrics, University of Colorado School of Medicine, University of Colorado, Aurora, CO, USA
2. Department of Biomedical Informatics, Stony Brook University, Stony Brook, NY, USA
3. Stony Brook University, Stony Brook, NY, USA
4. Palantir Technologies, Denver, CO, USA
5. The University of Michigan at Ann Arbor, Ann Arbor, MI, USA
6. University of Rochester Medical Center, Rochester, NY, USA
7. Johns Hopkins University School of Medicine, Baltimore, MD, USA
8. Sage Bionetworks, Seattle, WA, USA
9. University of Kentucky, Lexington, KY, USA
10. Real World Solutions, IQVIA, Cambridge, MA, USA
11. Observational Health Data Sciences and Informatics, New York, NY, USA
12. University of Alabama at Birmingham, Birmingham, AL, USA
13. Translational and Integrative Sciences Center, Oregon State University, Corvallis, OR, USA
14. Department of Biomedical Informatics, University of Pittsburgh, Pittsburgh, PA, USA
15. TriNetX, Cambridge, MA, USA
16. North Carolina Translational and Clinical Sciences Institute (NC TraCS), University of North Carolina at Chapel Hill, Chapel Hill, NC, USA
17. Stony Brook University, Stony Brook, NY, USA
18. University of Texas Medical Branch, Galveston, TX, USA
19. Oregon Clinical and Translational Research Institute, Oregon Health & Science University, Portland, OR, USA
20. Tufts Medical Center Clinical and Translational Science Institute, Tufts Medical Center, Boston, MA, USA
21. National Center for Advancing Translational Sciences, National Institutes of Health, Bethesda, MD, USA
22. Translational and Integrative Sciences Center, Dept. of Molecular Toxicology, Oregon State University, Corvallis, OR, USA
23. Schools of Medicine, Public Health, and Nursing, Johns Hopkins University, Baltimore, MD, USA

Abstract

Background: The majority of U.S. reports of COVID-19 clinical characteristics, disease course, and treatments are from single health systems or focused on one domain. Here we report the creation of the National COVID Cohort Collaborative (N3C), a centralized, harmonized, high-granularity electronic health record repository that is the largest, most representative U.S. cohort of COVID-19 cases and controls to date. This multi-center dataset supports robust evidence-based development of predictive and diagnostic tools and informs critical care and policy.

Methods and Findings: In a retrospective cohort study of 1,926,526 patients from 34 medical centers nationwide, we stratified patients using a World Health Organization COVID-19 severity scale and demographics; we then evaluated differences between groups over time using multivariable logistic regression. We established vital signs and laboratory values among COVID-19 patients with different severities, providing the foundation for predictive analytics. The cohort included 174,568 adults with severe acute respiratory syndrome associated with SARS-CoV-2 (PCR >99% or antigen <1%) as well as 1,133,848 adult patients that served as lab-negative controls. Among 32,472 hospitalized patients, mortality was 11.6% overall and decreased from 16.4% in March/April 2020 to 8.6% in September/October 2020 ($p = 0.002$ monthly trend). In a multivariable logistic regression model, age, male sex, liver disease, dementia, African-American and Asian race, and obesity were independently associated with higher clinical severity. To demonstrate the utility of the N3C cohort for analytics, we used machine learning (ML) to predict clinical severity and risk factors over time. Using 64 inputs available on the first hospital day, we predicted a severe clinical course (death, discharge to hospice, invasive ventilation, or extracorporeal membrane oxygenation) using random forest and XGBoost models (AUROC 0.86 and 0.87 respectively) that were stable over time. The most powerful predictors in these models are patient age and widely available vital sign and laboratory values. The established expected trajectories for many vital signs and laboratory values among patients with different clinical severities validates observations from smaller studies, and provides comprehensive insight into COVID-19 characterization in U.S. patients.

Conclusions: This is the first description of an ongoing longitudinal observational study of patients seen in diverse clinical settings and geographical regions and is the largest COVID-19 cohort in the United States. Such data are the foundation for ML models that can be the basis for generalizable clinical decision support tools. The N3C Data Enclave is unique in providing transparent, reproducible, easily shared, versioned, and fully auditable data and analytic provenance for national-scale patient-level EHR data. The N3C is built for intensive ML analyses by academic, industry, and citizen scientists internationally. Many observational correlations can inform trial designs and care guidelines for this new disease.

Introduction

As of mid-December 2020, severe acute respiratory syndrome associated with coronavirus-2 (SARS-CoV-2) has infected more than 70 million people and caused more than 1.6 million deaths worldwide^[a]. SARS-CoV-2 can cause coronavirus disease of 2019 (COVID-19), a condition characterized by pneumonia, hyperinflammation, hypoxemic respiratory failure, a prothrombotic state, cardiac dysfunction, substantial mortality, and persistent morbidity in some survivors. Few FDA-authorized therapeutics are available, and vaccine deployment has been slow. Progress in COVID-19 research has been slowed by lack of broad access to clinical data. Investigators in the United Kingdom¹ and Denmark^{1,2} have performed person-level analytics across their populace, but the U.S. has not had this capacity. A large, multi-center, representative clinical dataset has been desperately needed by U.S. clinicians, scientists, health systems, and policy-makers to develop predictive and diagnostic computational tools and to inform critical decisions.

To address these gaps, N3C was formed to accelerate understanding of SARS-CoV-2 and demonstrate a novel approach for collaborative data sharing and analytics during a pandemic. The National COVID Cohort Collaborative (N3C)³ is comprised of members from the NIH Clinical and Translational Science Awards (CTSA) Program and its Center for Data to Health (CD2H), the IDEa Centers for Translational Research^[b], the National Patient-Centered Clinical Research Network (PCORNet, pcornet.org), the Observational Health Data Sciences and Informatics (OHDSI, ohdsi.org) network, TriNetX (trinetx.com), and the Accrual to Clinical Trials (ACT, actnetwork.us/National) network.

Here we provide a detailed clinical description of the largest cohort of U.S. COVID-19 cases and representative controls to date. This cohort is racially and ethnically diverse and geographically distributed. We demonstrate its impact by 1) evaluating COVID-19 severity and risk factors over time and 2) using machine learning (ML) to develop a clinically useful model that accurately predicts severity using data from the first day of hospital admission.

Methods

Cohort Definition and Outcome Stratification

Because of the broad inclusion criteria, N3C includes cases and appropriate controls for varied analyses including both outpatients and inpatients (Supplemental Table 1). N3C includes patients with any encounter after 1/1/2020 with 1) one of a set of *a priori*-defined SARS-CoV-2 laboratory tests or 2) a “strong positive” diagnostic code or 3) two “weak positive” diagnostic codes during the same encounter or on the same date prior to 5/1/2020. The cohort definition is publicly available on GitHub.^[c] For N3C patients, encounters in the same health system beginning on or after 1/1/2018 are also included to provide information about pre-existing health conditions (“lookback data”). See Supplemental Methods for information about N3C architecture, data ingestion, and integration.

We conducted a retrospective cohort study of adults ≥ 18 years old at the 34 N3C sites whose data 1) have completed harmonization and integration (see Supplemental Methods), 2) were released for analysis, and 3) included the necessary death and mechanical ventilation information (Supplemental Figure 1). In order to demonstrate the scope of N3C, Figure 1a-b and Supplemental Table 1 are based on the entire cohort. All subsequent analyses include only patients with a positive SARS-CoV-2 laboratory test (polymerase chain reaction [PCR] or antigen) (Table 1).

[a]. <https://coronavirus.jhu.edu/map>

[b]. <https://www.nigms.nih.gov/Research/DRCB/IDeA/Pages/IDeA-CTR.aspx>

[c]. https://github.com/National-COVID-Cohort-Collaborative/Phenotype_Data_Acquisition

Table 1: SARS-CoV-2 Laboratory-Confirmed Positive Cohort Characteristics and Clinical Course

	Mild Outpatient WHO Severity 1-3	Mild_ED Outpatient with ED visit WHO Severity ~3	Moderate Hospitalized without invasive ventilation WHO Severity 4-6	Severe Hospitalized with invasive ventilation or ECMO WHO Severity 7-9	Hospital Mortality or Discharge to Hospice WHO Severity 10
N	121,078	21,018	25,907	2,790	3,775
Age (mean +/- SD)	41.1 (17.2) n=121078	43.4 (16.8) n=21018	55.0 (19.1) n=25907	57.0 (15.4) n=2790	71.8 (14.7) n=3775
Sex					
Female	65,435	11,410	13,396	1,089	1,564
Male	55,526	9,605	12,506	1,697	2,211
Other*	117	20 or fewer	20 or fewer	20 or fewer	0
Race					
White or Caucasian	70,330	7,786	10,739	1,020	1,912
Black or African-American	14,616	6,351	8,003	869	1,101
Native Hawaiian or Pacific Islander	267	40	66	20 or fewer	20 or fewer
Asian	2,778	564	717	86	120
Other	1030	403	373	51	48
Missing/Unknown	32,057	5,874	6,009	757	584
Ethnicity					
Hispanic	18,539	5,312	5,145	610	476
Non-Hispanic	80,188	12,510	17,313	1,789	2,779
Missing/Unknown	22,351	3,196	3,449	391	520
Insurance Payer					
Medicare	2,480	906	2,852	308	823
Commercial	11,718	2,277	1,984	227	237
Medicaid	2,945	1,590	1,974	242	294
Other	115,480	18,576	22,876	2,409	3,124
Body Size					
Body Mass Index (mean +/- SD)	30.1 (7.6) n=39836	31.2 (7.8) n=9552	31.0 (9.0) n=16489	32.9 (9.4) n=1862	29.5 (8.7) n=2440
Weight, kg (mean +/- SD)	86.3 (23.7) n=47284	87.3 (23.7) n=13511	88.6 (26.0) n=20068	95.5 (26.8) n=2349	84.6 (26.7) n=3106
Clinical course					
Hospital LOS, median (IQR)			6.6 (8.9) n=25906	27.5 (26.1) n=2790	14.0 (23.3) n=3775

Table 1 Legend. SARS-CoV-2 = severe acute respiratory syndrome associated with coronavirus-2. ED = Emergency Department. WHO = World Health Organization. ECMO = extracorporeal membrane oxygenation. LOS = length of stay. We stratified patients using the Clinical Progression Scale (CPS) established by the World Health Organization (WHO) for COVID-19 clinical research.⁴ Severity assigned by patient-specific encounter maximum

severity. *Other includes non-binary, no matching concept, and no information. Per N3C policy, we censored any cells with 1-20 patients and replaced them with “20 or fewer.”

Hospital Index Encounter and Clinical Severity

We defined a single index encounter for each laboratory-confirmed positive patient using a pre-specified algorithm (Supplemental Methods). We stratified patients using the Clinical Progression Scale (CPS) established by the World Health Organization (WHO) for COVID-19 clinical research.⁴ We placed patients into strata defined by the maximum clinical severity during their index encounter (Table 1). We collapsed some WHO CPS categories due to data limitations (e.g. some sites do not submit fraction of inspired oxygen [FiO₂]).

Variable Definition and Statistical Methods

We defined or identified existing concept sets in the Observational Medical Outcomes Partnership (OMOP) common data model (CDM) for each clinical concept (e.g. laboratory measure, vital sign, or medication, see Supplemental Methods). We validated each concept set with input from informatics and clinical subject matter experts. All concept sets and analytic pipelines are fully reproducible and will be made publicly available. We tested time trends using linear regression and differences between groups using multivariable logistic regression. See Supplemental Methods for additional information including software packages used.

Machine Learning Methods

We developed models to predict patient-specific maximum clinical severity: hospitalization with death, discharge to hospice, invasive mechanical ventilation, or extracorporeal membrane oxygenation (ECMO) versus hospitalization without any of those. To avoid immortal time bias, we only included patients with at least one hospital overnight. We split the hospitalized laboratory-confirmed positive cohort into randomly selected 70% training and 30% testing cohorts stratified by outcome proportions and held out the testing set. We chose a broad set of potential predictors present for at least 15% of the training set (Supplemental Table 2). The input variables are the most abnormal value on the first calendar day of the hospital encounter. When patients did not have a laboratory test value on the first calendar day, we imputed normal values for specialized labs (e.g. ferritin, procalcitonin) and the median cohort value for common labs (e.g. sodium, albumin) (Supplemental Table 2). We compared several analytical approaches

with varying flexibility and interpretability: logistic regression +/- L1 and L2 penalty, random forest, support vector machines, and XGBoost (github.com/dmlc/xgboost).

We internally validated models and limited overfitting using 5-fold cross-validation and evaluated models using the testing set and area under the receiver operator characteristic (AUROC) as the primary metric. Secondary metrics included precision/positive predictive value, recall/sensitivity, specificity, and F1-measure. Because SARS-CoV-2 outcomes have improved over time⁵, we evaluated model performance overall and for March-May 2020 and June-October 2020. See Supplemental Methods.

Role of the funding source

The primary study sponsors are multiple institutes of the U.S. National Institutes of Health. The National Center for Advancing Translational Sciences is the primary steward of the N3C data, and created the underlying architecture of the N3C Data Enclave, manages the Data Transfer Agreements and Data Use Agreements, houses the Data Access Committee, and supports contracts to vendors (see conflicts of interests section) to help build various aspects of the N3C Data Enclave. Employees of the NIH and of the contracting companies are included as authors of the manuscript and participated in the writing and decision to submit the manuscript. Please see the author contribution section for details.

Results

Study Cohort

As of December 7, 2020, data from 34 sites was harmonized and integrated into the N3C release set. The cohort includes data about 1,926,526 patients (Supplemental Table 1). The cohort derives from all U.S. geographic regions, but is more concentrated in the Southeast, Mid-Atlantic, and Midwest (Figure 1a). The age, sex, race, ethnicity, and insurance payer distributions (Figure 1b and Supplemental Table 1) indicate a diverse patient cohort that is representative of many segments of the U.S. population. Importantly, African-American and Hispanic patients, who have suffered disproportionately from COVID-19⁶, are represented in sufficient numbers to support robust subgroup analyses, pathophysiologic hypothesis generation, and testing of algorithms and models to avoid bias (Table 1).

Supplemental Tables 3a and 3b show the cohort stratified by CDM and strengths and weaknesses of each CDM.

Figure 1a shows cohort geographic distribution evolution during 2020.

Of the overall cohort, 174,568 adults (9.1%) had a positive SARS-CoV-2 PCR or antigen test at a site with death and ventilation data available (Table 1). Antigen tests represent <5% of a single site's positive tests. All other positive patients had positive PCR tests.

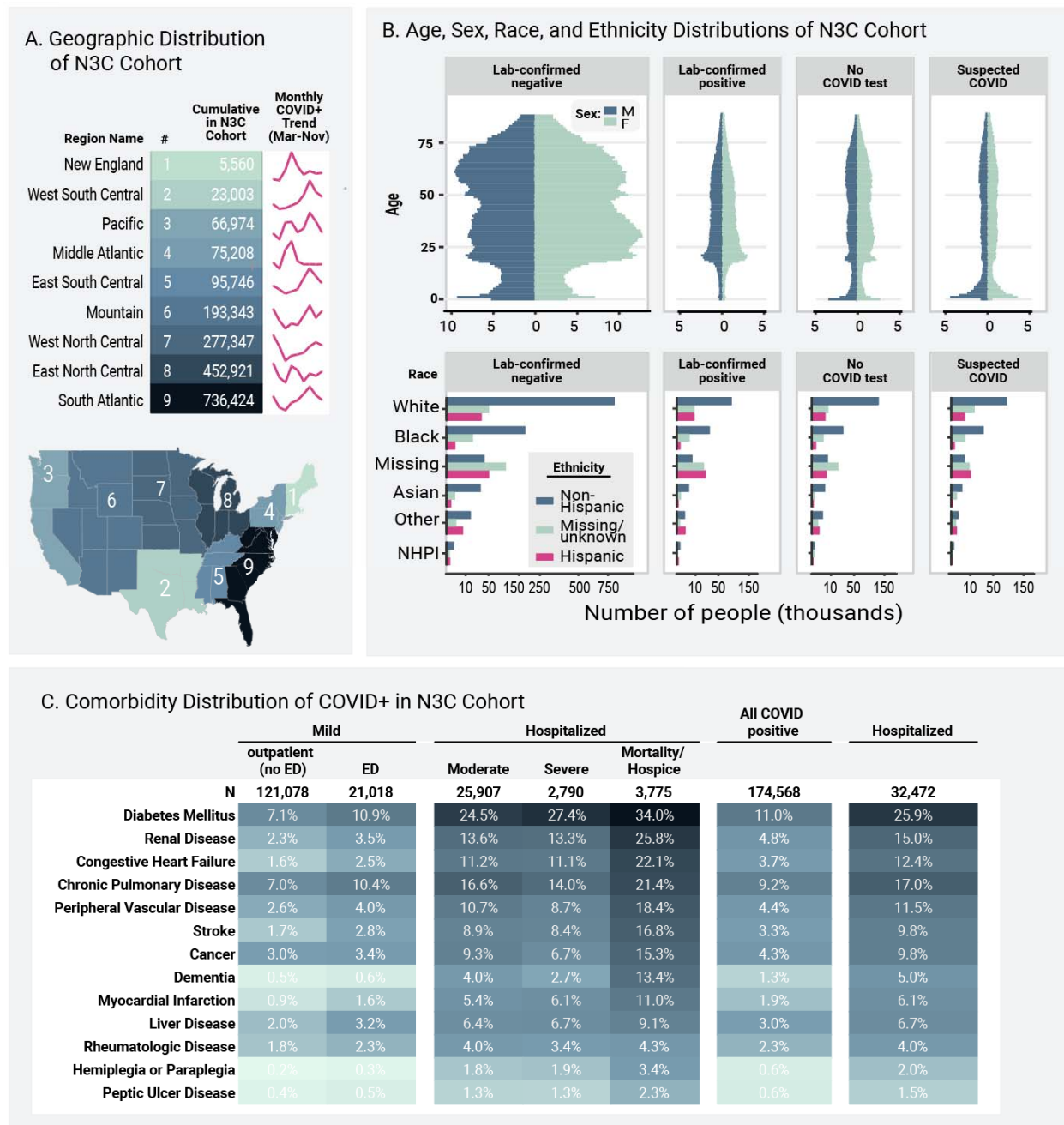


Figure 1: Geographic, Age, Sex, Race, Ethnicity, and Comorbidity Distributions of N3C Cohort.

Figure 1a shows the representation of each U.S. subregion in the overall (N = 1,926,526) cohort. Trend lines show the accumulation of each subregion’s sample size of lab confirmed positive cases over 2020. The Southeast, Mid-Atlantic, and Midwestern regions are the most heavily represented, but all regions have substantial patient counts.

Figure 1b shows the age, sex, race, and ethnicity distributions of the overall N3C cohort, stratified by the N3C phenotype groups (publicly available on GitHub^[c]). Racial and ethnic minorities are well-represented. COVID = coronavirus disease. NHPI = Native Hawaiian or Pacific Islander. **Figure 1c** shows comorbidity distributions for the

laboratory-confirmed positive adult cohort (N = 174,568). See Supplemental Methods for comorbidity definitions. We stratified patients using the Clinical Progression Scale (CPS) established by the World Health Organization (WHO) for COVID-19 clinical research, see Table 1⁴. Severity assigned by patient-specific encounter maximum severity. No ED = outpatient only without emergency department visit, ED = emergency department visit, moderate = hospitalized without invasive ventilation or extracorporeal membrane oxygenation (ECMO), severe = hospitalized with invasive ventilation or ECMO, mortality/hospice = hospital mortality or discharge to hospice.

Clinical Course and Mortality

Of those with a positive test, 32,472 (18.6%) were hospitalized. The median length of hospital stay was 5 days (IQR 2 to 10). Mortality (including discharge to hospice) was 11.6% among hospitalized patients (Table 1). Others have reported that inpatient mortality has decreased over time⁷. We confirm this: inpatient mortality decreased from 16.4% in March and April to 8.6% in September and October (P for monthly linear trend 0.002). Our data also show that clinical severity has shifted toward less invasive mechanical ventilation and/or ECMO as the pandemic has progressed (Figure 2a).

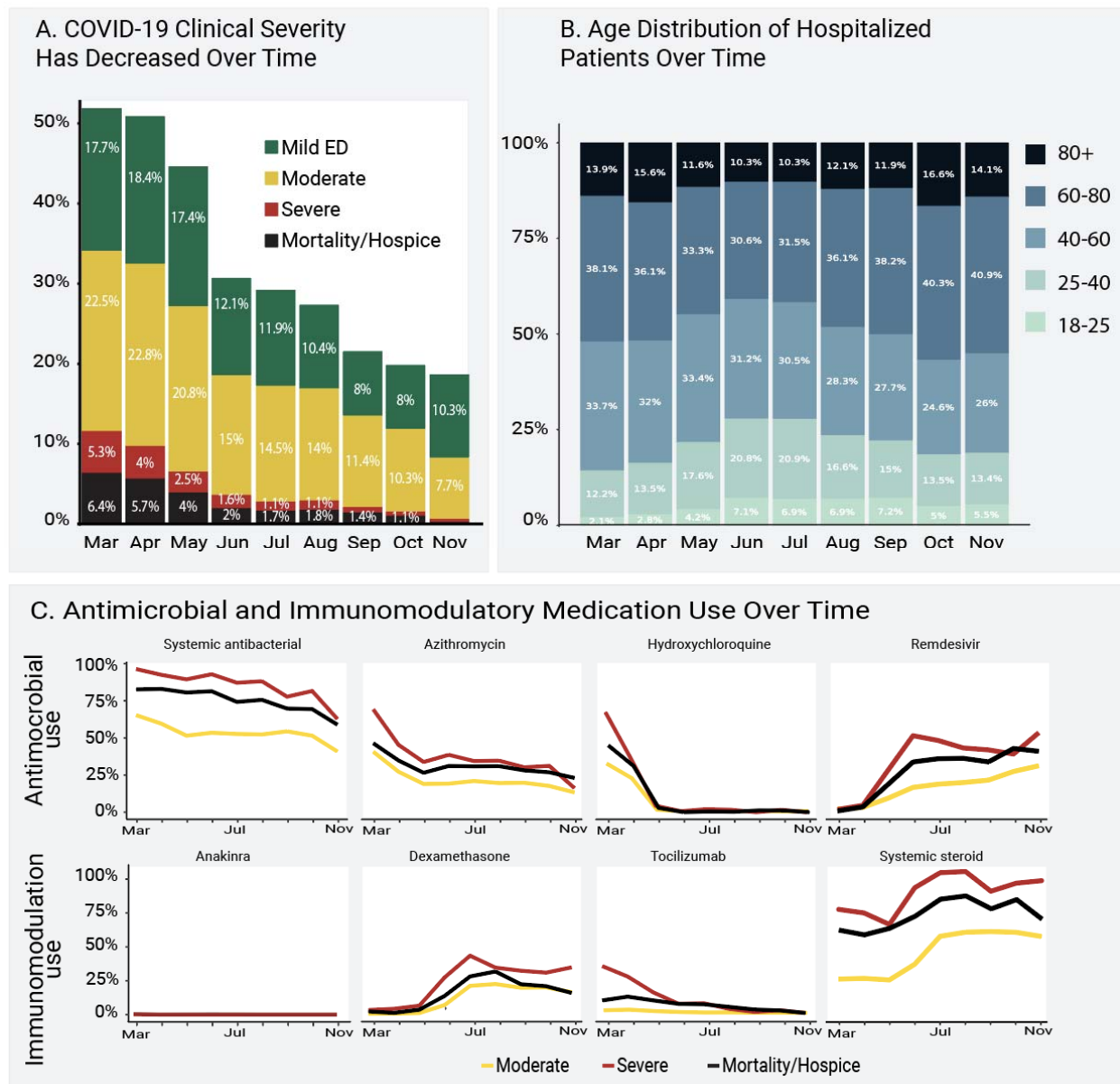


Figure 2. Clinical Severity, Age, and Antimicrobial and Immunomodulatory Medication Use Over Time

Figure 2a shows the distribution of patient-specific encounter maximum severity among hospitalized patients during 2020. Mortality and invasive ventilation or extracorporeal membrane oxygenation (“Severe”) have decreased steadily, monthly trend $p = 0.002$. Strata assigned using the Clinical Progression Scale (CPS) established by the World Health Organization (WHO) for COVID-19 clinical research (hospital mortality or discharge to hospice [black], invasive ventilation or extracorporeal membrane oxygenation [red], hospitalized without any of those [yellow], or emergency department visit only [green], see Table 1⁴). The percentage of patients from each month is shown over each severity group bar. **Figure 2b** shows how the age distribution of hospitalized patients has changed

during 2020. The percentage of patients from each month is shown over each age bracket bar. Older patients (darker blue) were more prominent in the spring and the fall, with more younger patients (lighter blue/teal) in the summer. **Figure 2c** shows the evolution of antimicrobial and immunomodulatory treatment regimens for hospitalized patients (top 3 severity strata, see Table 1) during 2020.

Demographics, Comorbidities, and Obesity

The age distribution for hospitalized patients was older during spring 2020, younger during the summer, and older again in the fall (Figure 2b). Lookback data that allowed calculation of comorbidities was present for 49% of hospitalized patients. Of hospitalized patients, 41% had at least one comorbid condition; the most common was diabetes mellitus (25.9%, Figure 1c). Mean body mass index (BMI) was 30 or above for all severity groups (Table 1). In a multivariable logistic regression model, age, male sex, liver disease, dementia, African-American and Asian race, and obesity (BMI > 30) were independently associated with higher patient-specific maximum clinical severity (invasive ventilation, ECMO, death, or discharge to hospice versus none of those, Supplemental Table 4). Interestingly, rheumatologic disease and blood type AB were protective. This analysis was conducted only to provide inference about previously reported risk factors and occurred after the prediction model was built, see below.

Vital Sign and Laboratory Measurements

As a hospital encounter progressed, those who ultimately developed higher clinical severity (invasive ventilation, ECMO, or death) tended to have progressively more abnormal (higher) mean heart rate (HR), respiratory rate (RR), and temperature than those who did not (Figure 3a). Mean diastolic blood pressure (DBP) and oxygen saturation (SpO₂) among those who ultimately died continued to become more abnormal (lower) while those who were invasively ventilated or on ECMO became more normal (higher, Figure 3a). Early in the hospital encounter, mean values of DBP, SpO₂, and widely used measures of inflammation (C-reactive protein [CRP] and ferritin), immunologic activation (white blood cell count, WBC), fibrinolysis (D-dimer), oxygen delivery (lactate), and renal function (creatinine) were more abnormal among those who ultimately required invasive ventilation or ECMO than those who did not (Figures 3a and 3b). These findings support the hypothesis that clinical severity can be predicted using information available early in a hospital course (see prediction models).

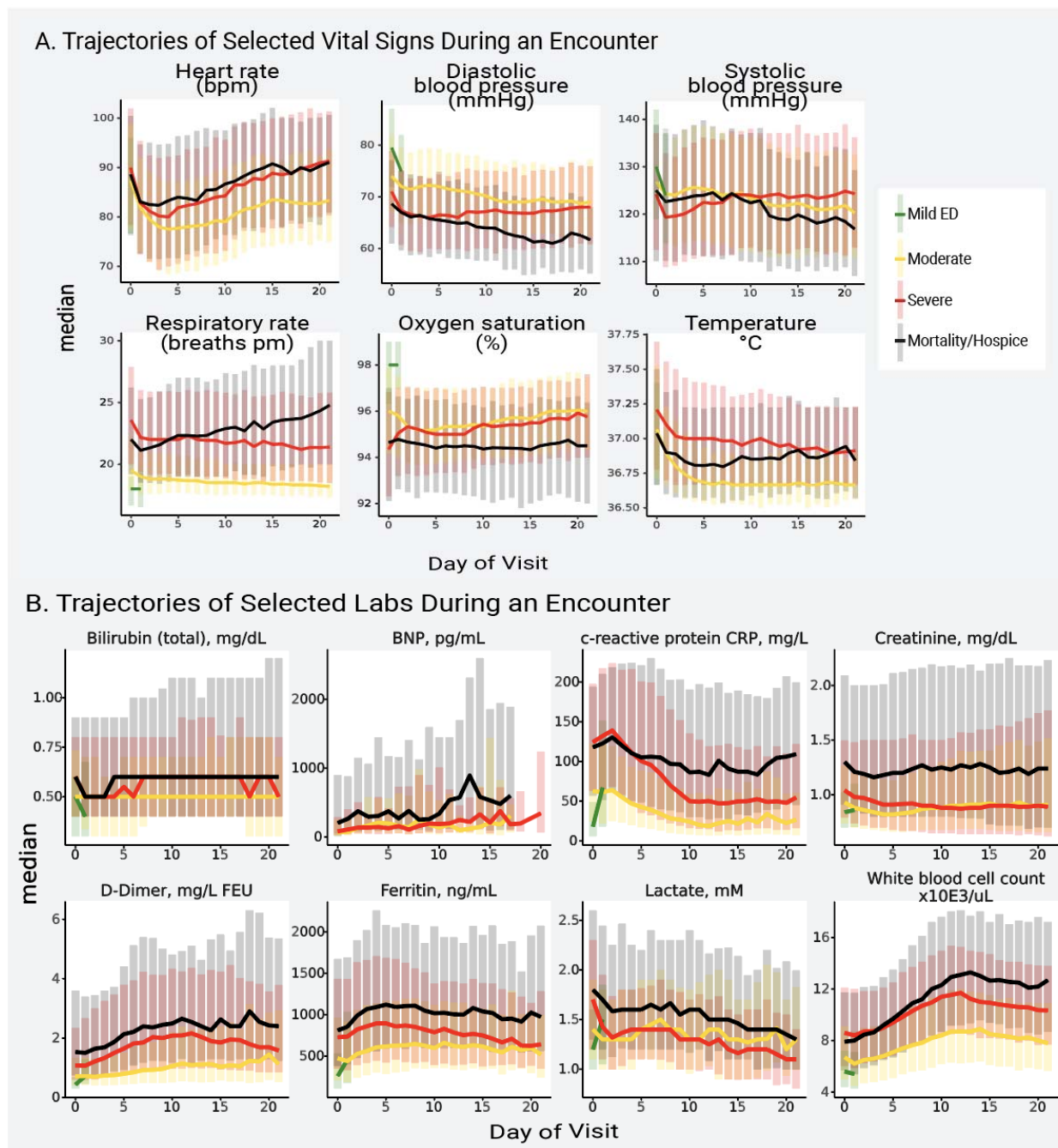


Figure 3. Trajectories of Vital Signs and Laboratory Tests During a Hospital Encounter

Figure 3a shows the median (line) and interquartile range (bars) of each vital sign on each hospital day, stratified by patient maximum severity (hospital mortality or discharge to hospice [black], invasive ventilation or extracorporeal membrane oxygenation [red], hospitalized without any of those [yellow], or emergency department visit only [green], see Table 1). Figure 3b shows the median (line) and interquartile range (bars) of each laboratory test on each hospital day, stratified by the same severity groups. BNP = brain natriuretic peptide.

Other measurements (e.g. sodium, platelet count, lymphocyte count) show potential utility as early outcome predictors, as their values near the beginning of a hospital encounter tend to separate patients with lower and higher maximum clinical severity (Supplemental Figure 2). Mean values of brain natriuretic peptide were low early in hospital encounters but showed meaningful spikes between hospital days 10 and 15. This is consistent with reports of the timing of cardiac failure in COVID-19⁸. Overall, patients with more abnormal nadir and/or peak values of several vital signs and laboratory measurements were more often represented in higher severity groups (invasively ventilated, ECMO, or death; Supplemental Figures 3a-b). CRP, ferritin, D-dimer, WBC, and IL-6 have been identified by the WHO as key biochemical parameters for a core COVID-19 outcome set⁴. These were measured in 44-94% of hospitalized patients, except IL-6 (7.6%). A relatively small number of hospitalized patients had blood type data (9.1%, Supplemental Figure 4).

Treatments

Usage of antimicrobial and immunomodulatory medications has changed dramatically over time (Figure 2c). Overall, 66.2% of the hospitalized cohort received at least one antimicrobial, with significant treatment regimen heterogeneity (Supplemental Figure 5a and Supplemental Table 5a). Patients who received invasive ventilation and ECMO received more antimicrobials overall (Supplemental Figure 5a). Antivirals with potential activity against SARS-CoV-2 were given to 16.7% (remdesivir) and 0.6% (lopinavir/ritonavir) of hospitalized patients. At least one immunomodulatory medication was given to 41.5% of hospitalized patients, also with wide variation in treatment regimen (Supplemental Figure 5b and Supplemental Table 5a). More patients received hydrocortisone, methylprednisolone, and prednisone than dexamethasone (Supplemental Table 5a). The trial indicating survival benefit from dexamethasone was published in July 2020.⁹ Other steroids also have modestly supportive clinical trial data.¹⁰

Of the hospitalized cohort, 14.0% received any invasive respiratory support (mechanical ventilation or inhaled or systemic pulmonary vasodilators, Supplemental Table 5b). Similarly, 8.3% received medications for cardiovascular support or ECMO and 3.2% received dialysis or continuous renal replacement therapy.

Severity Prediction

We developed several models that accurately predict a severe clinical course using data from the first hospital calendar day (Supplemental Figure 6 and Supplemental Table 6). The models with the best discrimination of severe versus non-severe clinical course were built using XGBoost (AUROC 0.87) and random forest (AUROC 0.86). Both are flexible nonlinear tree-based models that provide interpretability with a variable importance metric (Figure 4). Importantly, discrimination by the two models was stable over time (March-May 2020 and June-October 2020, Supplemental Table 6). This indicates that the models did not train on health care processes only typical during the pandemic's chaotic first wave. Commonly collected variables (age, SpO₂, RR, blood urea nitrogen, systolic blood pressure, and aspartate aminotransferase) were among the inputs with the highest variable importance for both models (Figure 4).

Variable	Random Forest	XG Boost	Logistic Regression			Mean
			None	L1	L2	
pH	0	0	1	1	1	0.6
Age at visit start (years)	3	4	0	0	0	1.4
Respiratory rate	7	3	2	2	2	3.2
Oxygen saturation (SpO2)	2	2	5	4	3	3.2
Systolic blood pressure (SBP)	9	8	4	3	5	5.8
Blood urea nitrogen (BUN)	1	1	11	11	10	6.8
Albumin	21	6	6	5	4	8.4
Lactate	18	9	7	7	7	9.6
C-reactive protein (CRP)	16	11	8	8	8	10.2
Aspartate aminotransferase (AST)	6	5	12	22	18	12.6
Absolute neutrophil count	12	25	9	9	9	12.8
Ethnicity = missing or unknown	45	7	3	6	6	13.4
Glucose	5	18	16	15	14	13.6
Platelet count	10	22	14	13	13	14.4
Diastolic blood pressure (DBP)	13	15	21	17	16	16.4
B-type natriuretic peptide (BNP)	32	12	18	14	15	18.2
Sodium	15	27	15	18	17	18.4
Troponin	14	10	30	21	23	19.6
Erythrocyte sedimentation rate (ESR)	36	30	13	12	12	20.6
Sex = male	38	36	10	10	11	21
Body weight	19	49	19	16	19	24.4
Hemoglobin	17	51	24	20	21	26.6
Charlson Diabetes mellitus	37	24	25	27	24	27.4
Creatinine	8	46	26	32	26	27.6
D-dimer	25	42	31	23	20	28.2
Ferritin	20	38	34	25	25	28.4
Bilirubin total	28	50	29	19	22	29.6
Charlson Dementia	42	13	37	28	28	29.6
Temperature	26	43	32	26	29	31.2
Potassium	23	53	33	29	27	33
Body mass index	27	41	38	31	31	33.6
Bilirubin conjugated	34	28	40	35	34	34.2
Charlson Q Score	30	20	48	38	40	35.2
Charlson Metastases	56	31	36	24	30	35.4
Absolute lymphocyte count	11	14	56	48	51	36
Charlson Renal Disease	44	23	39	39	36	36.2
Alamine aminotransferase (ALT)	24	40	23	57	43	37.4
Heart rate	31	33	51	36	37	37.6
Race = missing or unknown	46	32	17	58	42	39
Race = Asian	54	26	55	30	32	39.4
Chloride	22	57	28	60	39	41.2
Charlson Diabetes mellitus with complications	47	19	42	52	47	41.4
White blood cell count	4	17	62	61	63	41.4
Charlson Peripheral vascular disease	48	45	41	37	38	41.8
Hemoglobin - glycosylated (A1C)	33	48	45	43	41	42
Charlson Congestive heart failure	40	29	46	53	50	43.6
Race = Native Hawaiian or Pacific Islander	60	55	44	33	33	45
Race = Black or African-American	43	54	22	59	49	45.4
Charlson Peptic Ulcer Disease	57	59	43	34	35	45.6
Charlson Stroke	49	44	49	42	45	45.8
Procalcitonin	29	21	61	62	57	46
NTproBNP	35	39	53	50	55	46.4
Charlson Liver Disease (mild)	53	34	52	41	53	46.6
Charlson hemiplegia or paralysis	58	16	58	46	56	46.8
Ethnicity = not Hispanic or Latino	41	52	27	63	52	47
Race = white	39	60	20	54	62	47
Charlson Myocardial Infarction	52	47	50	45	48	48.4
Race = other	61	63	35	47	46	50.4
Sex = other	63	62	47	40	44	51.2
Charlson Cancer	51	56	54	44	54	51.8
Charlson Pulmonary disease	50	37	59	55	59	52
Charlson Rheumatologic disease	55	35	57	56	58	52.2
Charlson Liver Disease (severe)	59	58	63	49	60	57.8
Charlson HIV	62	61	60	51	61	59

Figure 4. Variable Importance in the Machine Learning Models Predicting Clinical Severity

The 64 machine learning (ML) model input variables are listed by their mean variable importance rank across ML model types. Each column is a ML model type. Logistic regression is shown without penalization and with L1 and L2 penalties. The table cells show a heat map with darkest (blue) representing highest variable importance and lightest (teal) representing lower variable importance. See Methods and Supplemental Methods for details about variable definitions, model construction, and testing. NTproBNP = N-Terminal-prohormone B-type Natriuretic Peptide.

Discussion

This manuscript characterizes the largest U.S. COVID-19 cohort to date. We have confirmed a month-over-month decrease in COVID-19 inpatient mortality and invasive ventilation rates since March 2020. We developed accurate ML models to predict clinical severity based only on information available on the first calendar day of admission. The most powerful predictors in these models are patient age and widely available vital sign and laboratory values. These models can be the basis for generalizable clinical decision support tools. We also established expected trajectories for many vital signs and laboratory values among patients with different clinical severities. Expected trajectories can contribute to clinician decision-making about what a patient will need.

Site heterogeneity in the distribution of predictors of severe COVID-19 disease including age, race, ethnicity, and existing comorbidities (e.g. diabetes) has complicated interpretation of their independent impact on outcomes. Like others, we found that age, male sex¹, African-American race^{6,11} and obesity^{12,13} were associated with greater clinical severity. Associations of liver disease and dementia with COVID-19 severity have also been reported^{14,15}. We found that patients with rheumatologic disease had lower clinical severity. This is consistent with reports that after adjustment for age, diabetes, and renal impairment, patients with rheumatologic disease on some treatment regimens have lower risk of hospitalization¹⁶. Increased risk of intubation and death has been inconsistently found among patients with blood types AB, A, and B relative to type O.¹⁷⁻¹⁹ In contrast, we found that blood type AB was protective.

We also found significant treatment regimen heterogeneity for inpatients with COVID-19. Some medications have fallen out of favor (e.g. hydroxychloroquine, azithromycin); others are the subject of ongoing studies (e.g. anakinra, tocilizumab). For most treatments, the balance of risks and benefits has not been evaluated rigorously in randomized controlled trials. Ongoing monitoring for adverse effects in observational data like N3C will be important.

The N3C has unique features that distinguish it from other COVID-19 data resources. First, it harmonizes data from a very large number of clinical sites (73 have signed data transfer agreements to date). This is important because significant site-level variation in critical metrics such as invasive ventilation and mortality has been reported.^{20–23} Central curation ensures that N3C data are robust and quality-assured across sites. This is in contrast to the known challenges of relying on site-level CDM quality assurance processes in distributed networks (e.g. OHDSI, PCORnet). Most U.S. reports of COVID-19 clinical characteristics, disease course, treatments, and outcomes come from a single hospital or health system^{6,22} in a single geographic region. Another network has reported a large COVID-19 cohort, but the patient-level data is not centralized and thus is less amenable to machine learning²⁴.

Developed under the intense time pressure of a health crisis, earlier data aggregation efforts^{1,21,25–28} may not have been designed to support future research. The N3C Data Enclave³ provides transparent, easily shared, versioned, and fully auditable data and analytic provenance. This is a key advantage, as a lack of auditable data and analytic provenance has resulted in retraction of high-profile COVID-19 publications.^{29,30}

N3C users should bear in mind its limitations. Because the data are aggregated from many health systems and 4 CDMs that vary in granularity, some sites have systematic missingness of some variables (see Supplemental Methods). Detailed respiratory support information such as oxygen flow, FiO₂, and ventilator settings (typically recorded in EHR flowsheets) is not fully available. Orders related to limitations in care such as “do not attempt resuscitation” (DNAR) are not yet present in N3C. Some inpatient mortality in our study likely occurred in patients who had DNAR orders in place. Exclusion of those patients might improve severity model prediction. Finally, exact time of laboratory values is inconsistently provided by sites, so labs are standardized to calendar day, but not time of day.

In conclusion, N3C is a nationally representative, transparent, reproducible, harmonized data resource that enables effective and efficient collaborative observational COVID-19 research. N3C is built for intensive machine learning analyses by academic, industry, and citizen scientists internationally. We have demonstrated its utility by developing a clinically useful patient severity predictor.

Ethics and Regulatory

The N3C data transfer to NCATS is performed under a Johns Hopkins University Reliance Protocol # IRB00249128 or individual site agreements with NIH.

Use of the N3C data for this study is authorized under the following IRB Protocols:

Site	IRB name	Exempted vs. approved	Protocol number
University of Alabama-Birmingham	The University of Alabama at Birmingham Office of the Institutional Review Board for Human Use	exempted	IRB-300006285
University of Colorado	Colorado Multiple Institutional Review Board	approved	20-2225
Johns Hopkins University	Johns Hopkins Office of Human Subjects Research - Institutional Review Board	approved	IRB00249128
University of Kentucky	Medical Institutional Review Board of the University of Kentucky	exempted	62294
University of Michigan	University of Michigan Medical School Institutional Review Board	approved	HUM00188854
University of North Carolina	University of North Carolina Chapel Hill Institutional Review Board	exempted	20-3106
Oregon State University	Oregon State University Institutional Review Board	approved	IRB-2020-0830
University of Rochester	University of Rochester Research Subjects Review Board	exempted	STUDY00005366
Stony Brook University	Office of Research Compliance, Division of Human Subject Protections, Stony Brook University	exempted	IRB2020-00604
University of Texas-Medical Branch	Institutional Review Board of the University of Texas Medical Branch	exempted	20-0245

The N3C Data Enclave is approved under the authority of the NIH Institutional Review Board for Protocol 000082 associated with NIH iRIS reference number: 546652 entitled: “NCATS National COVID-19 Cohort Collaborative (N3C) Data Enclave Repository.” Further information can be found at <https://ncats.nih.gov/n3c/resources>.

Acknowledgments

The analyses described in this publication were conducted with data or tools accessed through the NCATS N3C Data Enclave covid.cd2h.org/enclave and supported by NCATS U24 TR002306 to Drs. Haendel, Guinney, Chute, Saltz, and Williams; also supporting Emily Pfaff, Anita Walden, Julie McMurry, Andrew Neumann, Davera Gabriel, and Harold Lehmann. Dr. Tellen D. Bennett was supported by UL1TR002535 03S2 and UL1TR002535; James Brian Byrd by NIH grant K23HL128909; Dr. Alina Denham by DP5OD021338 (PI: Hill); Dr. Ramakanth Kavuluru by NLM R01LM01324 and NCATS CTSA: UL1TR001998; Michele Morris by UL1TR001857-01S1 ACT; Seth Russell by the Data Science to Patient Value University of Colorado Anschutz Medical Campus; and Dr. Heidi Spratt by UL1TR001439. This research was possible because of the patients whose information is included within the data from participating organizations (covid.cd2h.org/dtas) and the organizations and scientists (covid.cd2h.org/duas) who have contributed to the on-going development of this community resource³.

Carilion Clinic (UL1TR003015-02S2: Provision of Clinical Data to Support a Nationwide COVID-19 Cohort Collaborative); George Washington Children's Research Institute (UL1TR001876: Clinical and Translational Science Institute at Children's National); Duke University (UL1TR002553: Duke CTSA); Johns Hopkins University (UL1TR003098: Johns Hopkins Institute for Clinical and Translational Research); Mayo Clinic Rochester (UL1TR002377: Mayo Clinic Center for Clinical and Translational Science); Medical University of South Carolina (UL1TR001450: South Carolina Clinical & Translational Research Institute SCTR); Penn State Health Milton S. Hershey Medical Center (UL1TR002014: Penn State Clinical and Translational Science Institute); Rush University Medical Center (UL1TR002389: Institute for Translational Medicine); Stony Brook University; The Ohio State University (UL1TR002733: The OSU Center for Clinical and Translational Science: Advancing Today's Discoveries to Improve Health); Tufts University Boston (UL1TR002544-03S4: Tufts Clinical and Translational Science Institute N3C Supplement); University of Massachusetts Medical School Worcester (UL1TR001453: University of Massachusetts Center for Clinical and Translational Science); University of Alabama at Birmingham (UL1TR003096: Center for Clinical and Translational Science); University of Arkansas for Medical Sciences

(UL1TR003107: UAMS Translational Research Institute); The University of Chicago (UL1TR002389: ITM 2.0: Advancing Translational Science in Metropolitan Chicago); University of Colorado Denver (UL1TR002535-03S2: CCTSI Participation in the National COVID Cohort Collaborative N3C); University of Illinois at Chicago (UL1TR002003: Clinical and Translational Science Award); The University of Iowa (UL1TR002537: The University of Iowa Clinical and Translational Science Award); University of Kentucky (UL1TR001998-04S1: Kentucky Center for Clinical and Translational Science); University of Miami (UL1TR002736: Miami Clinical and Translational Science Institute); The University of Michigan at Ann Arbor (UL1TR002240: Michigan Institute for Clinical and Health Research); University of Minnesota (UL1TR002494: University of Minnesota Clinical and Translational Science Institute); University of Nebraska Lincoln (U54GM115458: University of Nebraska Center for Clinical & Translational Research); University of North Carolina at Chapel Hill (UL1TR002489: ICEES+ COVID-19 Open Infrastructure to Democratize and Accelerate Cross-Institutional Clinical Data Sharing and Research); University of Southern California (UL1TR001855: Southern California Clinical and Translational Institute); The University of Texas Medical Branch at Galveston (UL1TR001439: UTMB Clinical and Translational Science Award); The University of Utah (UL1TR002538-03S3: Infrastructure Support for Participation in the N3C Data Repository); University of Washington (UL1TR002319: Institute of Translational Health Sciences); University of Wisconsin-Madison (UL1TR002373: Institutional Clinical AND Translational Science Award); University of Virginia (UL1TR003015-02S2: Provision of Clinical Data to Support a Nationwide COVID-19 Cohort Collaborative); Virginia Commonwealth University (UL1TR002649-03S3: N3C & All of Us Research Program Collaborative Project); Wake Forest University Health Sciences (UL1TR001420: Wake Forest Clinical and Translational Science Award); Washington University in St. Louis (UL1TR002345: Washington University Institute of Clinical Translational Sciences); West Virginia University (U54GM104942: West Virginia Clinical and Translational Science Institute).

Contributions

Contributions are organized according to contribution roles as follow:

Data curation: Tellen D. Bennett, Richard A. Moffitt, Adit Anand, Zhenglong Qian, Katie Rebecca Bradwell, Davera Gabriel, Andrew T. Girvin, Stephanie S. Hong, Hunter Jimenez, Ramakanth Kavuluru, Kristin Kostka, Harold P. Lehmann, Amin Manna, Emily R. Pfaff, Nabeel Qureshi, Seth Russell, Peter E. DeWitt, Yun Jae Yoo,

Richard L. Zhu, Ken R. Gersing, and Christopher G. Chute. These authors all had access to the limited dataset required for data analysis presented herein.

Data integration: Richard A. Moffitt, Janos G. Hajagos, Benjamin Amor, Adit Anand, Mark M. Bissell, Katie Rebecca Bradwell, Davera Gabriel, Andrew T. Girvin, Stephanie S. Hong, Hunter Jimenez, Kristin Kostka, Amin Manna, Matvey B. Palchuk, Nabeel Qureshi, Seth Russell, Richard L. Zhu, Ken R. Gersing, Christopher G. Chute;

Data quality assurance: Tellen D. Bennett, Richard A. Moffitt, Janos G. Hajagos, Adit Anand, Mark M. Bissell, Katie Rebecca Bradwell, Davera Gabriel, Andrew T. Girvin, Stephanie S. Hong, Hunter Jimenez, Kristin Kostka, Harold P. Lehmann, Eli Levitt, Amin Manna, Michele Morris, Matvey B. Palchuk, Emily R. Pfaff, Nabeel Qureshi, Seth Russell, Jacob T. Wooldridge, Yun Jae Yoo, Xiaohan Tanner Zhang, Richard L. Zhu, Joel H. Saltz, Ken R. Gersing, and Christopher G. Chute.

Data visualization: Richard A. Moffitt, Adit Anand, Zhenglong Qian, Carolyn Bremer, James Brian Byrd, Alina Denham, Andrew T. Girvin, Elaine L. Hill, Hunter Jimenez, Amin Manna, Julie A. McMurry, Seth Russell, Peter E. DeWitt, Tellen D. Bennett, Yun Jae Yoo, Ken R. Gersing, and Melissa A. Haendel.

Manuscript review and editing: Tellen D. Bennett, Richard A. Moffitt, Janos G. Hajagos, James Brian Byrd, Alina Denham, Brian T. Garibaldi, Andrew T. Girvin, Justin Guinney, Elaine L. Hill, Ramakanth Kavuluru, Eli Levitt, Sandeep K. Mallipattu, Julie A. McMurry, Emily R. Pfaff, Seth Russell, Heidi Spratt, Christopher P. Austin, Joel H. Saltz, Melissa A. Haendel, and Christopher G. Chute.

Clinical subject matter expertise: Tellen D. Bennett, James Brian Byrd, Davera Gabriel, Brian T. Garibaldi, Eli Levitt, Sandeep K. Mallipattu, John Muschelli, Jacob T. Wooldridge, Xiaohan Tanner Zhang, Christopher P. Austin, Joel H. Saltz, Ken R. Gersing, and Christopher G. Chute.

Manuscript drafting: Tellen D. Bennett, Richard A. Moffitt, James Brian Byrd, Brian T. Garibaldi, Andrew T. Girvin, Eli Levitt, Sandeep K. Mallipattu, Julie A. McMurry, Emily R. Pfaff, Heidi Spratt, Joel H. Saltz, Christopher G. Chute, and Melissa A. Haendel.

Project management: Richard A. Moffitt, Tellen D. Bennett, Davera Gabriel, Julie A. McMurry, Andrew J. Neumann, Nabeel Qureshi, Anita Walden, Christopher P. Austin, Ken R. Gersing, and Melissa A. Haendel.

Funding acquisition: Julie A. McMurry, Nabeel Qureshi, Anita Walden, Christopher P. Austin, Ken R. Gersing, Melissa A. Haendel, and Christopher G. Chute.

Database / information systems admin: Janos G. Hajagos, Andrew T. Girvin, Hunter Jimenez, Amin Manna, Julie A. McMurry, Andrew J. Neumann, Anita Walden, Andrew E. Williams, and Ken R. Gersing.

Clinical data model expertise: Tellen D. Bennett, Davera Gabriel, Ramakanth Kavuluru, Kristin Kostka, Harold P. Lehmann, Eli Levitt, Michele Morris, Emily R. Pfaff, Xiaohan Tanner Zhang, Richard L. Zhu, Joel H. Saltz, Ken R. Gersing; N3C Phenotype definition: Kristin Kostka, Michele Morris, Matvey B. Palchuk, Emily R. Pfaff, Andrew E. Williams, Ken R. Gersing, and Christopher G. Chute.

Regulatory management and governance: Julie A. McMurry, Andrew J. Neumann, Anita Walden, Ken R. Gersing, Melissa A. Haendel, and Christopher G. Chute.

Declaration of interests

Benjamin Amor, Katie Rebecca Bradwell, Andrew T. Girvin, Amin Manna, and Nabeel Qureshi: employee of Palantir Technologies; Brian T. Garibaldi: Member of the FDA Pulmonary-Allergy Drugs Advisory Committee (PADAC); Matvey B. Palchuk: employee of TriNetX; Kristin Kostka: employee of IQVIA Inc.; Julie A. McMurry: and Melissa A. Haendel Cofounders of Pryzm Health; Chris P. Austin and Ken R. Gersing, employees of the National Institutes of Health.

No conflicts of interest reported for all other authors.

Data Sharing

The N3C Data Enclave (covid.cd2h.org/enclave) houses fully reproducible, transparent, and broadly available limited and de-identified datasets (HIPAA definitions: <https://www.hhs.gov/hipaa/for-professionals/privacy/special-topics/de-identification/index.html>). Data is accessible by investigators at institutions that have signed a Data Use Agreement with NIH who have taken human subjects and security training and attest to the N3C User Code of Conduct. Investigators wishing to access the limited dataset must also supply an institutional IRB protocol. All requests for data access are reviewed by the NIH Data Access Committee. A full description of the N3C Enclave governance has been published;³ information about how to apply for access is available on the NCATS website:

<https://ncats.nih.gov/n3c/about/applying-for-access>. Reviewers and health authorities will be given access permission and guidance to aid reproducibility and outcomes assessment. A Frequently Asked Questions about the data and access has been created at; <https://ncats.nih.gov/n3c/about/program-faq>

The data model is OMOP 5.3.1, specifications are posted at: https://ncats.nih.gov/files/OMOP_CDM_COVID.pdf

The latest version of the N3C Covid-19 Phenotype is always available at:

https://github.com/National-COVID-Cohort-Collaborative/Phenotype_Data_Acquisition

Governance documents, codesets, code, and other N3C resources are available within the project Github repositories and/or in Zenodo for archival purposes:

<https://github.com/National-COVID-Cohort-Collaborative>

<https://zenodo.org/communities/cd2h-covid/>

Information on the source Common Data Models is available at:

OHDSI: <https://ohdsi.org/>

PCORNet: <https://pcornet.org/>

ACT: <https://www.dbmi.pitt.edu/node/53983>

TriNetX: <https://trinetx.com/>

Other referenced resources are available at:

COVID-19 Map - Johns Hopkins Coronavirus Resource Center <https://coronavirus.jhu.edu/map.html>

Institutional Development Award Program Infrastructure for Clinical and Translational Research (IDeA-CTR)

<https://www.nigms.nih.gov/Research/DRCB/IDeA/Pages/IDeA-CTR.aspx>

xgboost <https://github.com/dmlc/xgboost>

References

- 1 Williamson EJ, Walker AJ, Bhaskaran K, *et al.* Factors associated with COVID-19-related death using OpenSAFELY. *Nature* 2020; **584**: 430–6.
- 2 Butt JH, Gerds TA, Schou M, *et al.* Association between statin use and outcomes in patients with coronavirus disease 2019 (COVID-19): a nationwide cohort study. *BMJ Open* 2020; **10**: e044421.
- 3 Haendel M, Chute C, Gersing K. The National COVID Cohort Collaborative (N3C): Rationale, Design, Infrastructure, and Deployment. *J Am Med Inform Assoc* 2020; published online Aug 17. DOI:10.1093/jamia/ocaa196.
- 4 WHO Working Group on the Clinical Characterisation and Management of COVID-19 infection. A minimal common outcome measure set for COVID-19 clinical research. *Lancet Infect Dis* 2020; **20**: e192–7.
- 5 Dennis JM, McGovern AP, Vollmer SJ, Mateen BA. Improving Survival of Critical Care Patients With Coronavirus Disease 2019 in England: A National Cohort Study, March to June 2020. *Crit Care Med* 2020; published online Oct 26. DOI:10.1097/CCM.0000000000004747.
- 6 Azar KMJ, Shen Z, Romanelli RJ, *et al.* Disparities In Outcomes Among COVID-19 Patients In A Large Health Care System In California. *Health Aff* 2020; **39**: 1253–62.
- 7 Horwitz LI, Jones SA, Cerfolio RJ, *et al.* Trends in COVID-19 Risk-Adjusted Mortality Rates. *J Hosp Med* 2020; published online Oct 21. DOI:10.12788/jhm.3552.
- 8 Guzik TJ, Mohiddin SA, Dimarco A, *et al.* COVID-19 and the cardiovascular system: implications for risk assessment, diagnosis, and treatment options. *Cardiovasc Res* 2020; **116**: 1666–87.
- 9 RECOVERY Collaborative Group, Horby P, Lim WS, *et al.* Dexamethasone in Hospitalized Patients with Covid-19 - Preliminary Report. *N Engl J Med* 2020; published online July 17. DOI:10.1056/NEJMoa2021436.
- 10 Angus DC, Derde L, Al-Beidh F, *et al.* Effect of Hydrocortisone on Mortality and Organ Support in Patients With Severe COVID-19: The REMAP-CAP COVID-19 Corticosteroid Domain Randomized Clinical Trial. *JAMA* 2020; **324**: 1317–29.

- 11 Price-Haywood EG, Burton J, Fort D, Seoane L. Hospitalization and Mortality among Black Patients and White Patients with Covid-19. *N Engl J Med* 2020; **382**: 2534–43.
- 12 Tartof SY, Qian L, Hong V, *et al.* Obesity and Mortality Among Patients Diagnosed With COVID-19: Results From an Integrated Health Care Organization. *Ann Intern Med* 2020; **173**: 773–81.
- 13 Peters SAE, MacMahon S, Woodward M. Obesity as a risk factor for COVID-19 mortality in women and men in the UK biobank: Comparisons with influenza/pneumonia and coronary heart disease. *Diabetes Obes Metab* 2021; **23**: 258–62.
- 14 Liu N, Sun J, Wang X, Zhao M, Huang Q, Li H. The Impact of Dementia on the Clinical Outcome of COVID-19: A Systematic Review and Meta-Analysis. *J Alzheimers Dis* 2020; **78**: 1775–82.
- 15 Moon AM, Webb GJ, Aloman C, *et al.* High mortality rates for SARS-CoV-2 infection in patients with pre-existing chronic liver disease and cirrhosis: Preliminary results from an international registry. *J. Hepatol.* 2020; **73**: 705–8.
- 16 Hyrich KL, Machado PM. Rheumatic disease and COVID-19: epidemiology and outcomes. *Nat Rev Rheumatol* 2020; published online Dec 18. DOI:10.1038/s41584-020-00562-2.
- 17 Latz CA, DeCarlo C, Boitano L, *et al.* Blood type and outcomes in patients with COVID-19. *Ann Hematol* 2020; **99**: 2113–8.
- 18 Zietz M, Zucker J, Tatonetti NP. Associations between blood type and COVID-19 infection, intubation, and death. *Nat Commun* 2020; **11**: 5761.
- 19 Ray JG, Schull MJ, Vermeulen MJ, Park AL. Association Between ABO and Rh Blood Groups and SARS-CoV-2 Infection or Severe COVID-19 Illness : A Population-Based Cohort Study. *Ann Intern Med* 2020; published online Nov 24. DOI:10.7326/M20-4511.
- 20 Goyal P, Choi JJ, Pinheiro LC, *et al.* Clinical Characteristics of Covid-19 in New York City. *N Engl J Med* 2020; **382**: 2372–4.
- 21 Gupta S, Hayek SS, Wang W, *et al.* Factors Associated With Death in Critically Ill Patients With Coronavirus

- Disease 2019 in the US. *JAMA Intern Med* 2020; published online July 15.
DOI:10.1001/jamainternmed.2020.3596.
- 22 Richardson S, Hirsch JS, Narasimhan M, *et al*. Presenting Characteristics, Comorbidities, and Outcomes Among 5700 Patients Hospitalized With COVID-19 in the New York City Area. *JAMA* 2020; **323**: 2052–9.
- 23 Auld SC, Caridi-Scheible M, Blum JM, *et al*. ICU and Ventilator Mortality Among Critically Ill Adults With Coronavirus Disease 2019. *Crit Care Med* 2020; **48**: e799–804.
- 24 Brat GA, Weber GM, Gehlenborg N, *et al*. International electronic health record-derived COVID-19 clinical course profiles: the 4CE consortium. *NPJ Digit Med* 2020; **3**: 109.
- 25 Jarrett M, Schultz S, Lyall J, *et al*. Clinical Mortality in a Large COVID-19 Cohort: Observational Study. *J Med Internet Res* 2020; **22**: e23565.
- 26 Liu D, Cui P, Zeng S, *et al*. Risk factors for developing into critical COVID-19 patients in Wuhan, China: A multicenter, retrospective, cohort study. *EClinicalMedicine* 2020; **25**: 100471.
- 27 Garibaldi BT, Fiksel J, Muschelli J, *et al*. Patient Trajectories Among Persons Hospitalized for COVID-19 : A Cohort Study. *Ann Intern Med* 2020; published online Sept 22. DOI:10.7326/M20-3905.
- 28 Deng G, Yin M, Chen X, Zeng F. Clinical determinants for fatality of 44,672 patients with COVID-19. *Crit. Care*. 2020; **24**: 179.
- 29 Mehra MR, Ruschitzka F, Patel AN. Retraction-Hydroxychloroquine or chloroquine with or without a macrolide for treatment of COVID-19: a multinational registry analysis. *Lancet* 2020; **395**: 1820.
- 30 Mehra MR, Desai SS, Kuy S, Henry TD, Patel AN. Cardiovascular Disease, Drug Therapy, and Mortality in Covid-19. *N Engl J Med* 2020; **382**: e102.