




Cite this: *RSC Adv.*, 2019, 9, 14116

# Development of different deep eutectic solvent aqueous biphasic systems for the separation of proteins†

Jiaojiao Meng,<sup>a</sup> Yuzhi Wang,<sup>a</sup> \*<sup>a</sup> Yigang Zhou,<sup>\*b</sup> Jing Chen,<sup>a</sup> Xiaoxiao Wei,<sup>a</sup> Rui Ni,<sup>a</sup> Ziwei Liu<sup>a</sup> and Fangting Xu<sup>a</sup>

In this work, aqueous biphasic systems (ABSs) formed by different deep eutectic solvents (DESs) were prepared and applied to extract proteins. The five kinds of DESs comprised amino acids and polyols ([amino acids][polyols]). They were combined with another DES resulting from tetrabutylammonium chloride and polypropylene glycol 400 (TBAC)[PPG400] to form ABSs. The phase-forming abilities of [TBAC][PPG400]/[amino acids][polyols] were compared with those of [TBAC][PPG400]/amino acids and [TBAC][PPG400]/polyols. The results exhibited that the biphasic formation ability of [amino acids][polyols] lies between those of amino acids and polyols when [TBAC][PPG400] acts as the other phase in ABSs. The systems comprising [TBAC][PPG400] and [L-proline][xylitol] ([Pro][Xyl]) were further investigated to optimize the extraction performance. It was found that 97.30% chymotrypsin tended to distribute into the [Pro][Xyl]-rich phase under optimum conditions. The practical application of the system was demonstrated by the extraction of chymotrypsin from porcine pancreas. Besides, UV-Vis spectrophotometry (UV-Vis), Fourier transform infrared spectroscopy (FT-IR), and circular dichroism (CD) spectroscopy proved that the conformation of proteins remained unchanged during the extraction process. The extraction mechanism of the formation of DES–protein aggregates was investigated via conductivity, dynamic light scattering (DLS), and transmission electron microscopy (TEM). The overall results suggest that the DES/DES-based ABSs have outstanding potential in the green extraction of proteins.

Received 21st January 2019  
Accepted 19th April 2019

DOI: 10.1039/c9ra00519f

rsc.li/rsc-advances

## 1. Introduction

With more emphasis on environmental protection, the concept of green chemistry has arisen and developed rapidly in recent years. In the separation and purification fields, green extraction technologies<sup>1</sup> and energy-saving extraction processes with alternative and renewable natural solvents have attracted considerable attention. Among them, the synthesis and usage of green solvents has attracted spotlight in academia. Deep eutectic solvents (DESs) are novel green solvents, which contain hydrogen bond acceptors (HBAs) and hydrogen bond donors (HBDs). Compared with traditional organic solvents, DESs are non-volatile, non-toxic, biodegradable, and thermally stable and exhibit excellent solubility.<sup>2–6</sup> Additionally, DESs can be easily obtained by heating two or three components at a proper ratio, and the products need not be purified. Based on this, DESs have been regarded as excellent substitutes for toxic

organic solvents in many fields such as catalysis,<sup>7</sup> organic synthesis,<sup>8</sup> and separation.<sup>9–11</sup>

Proteins are bioactive macromolecules, which play an important role in life activities and have extensive applications in food and medical fields. Therefore, it is crucial to achieve the purification of proteins. The traditional methods involve ion exchange chromatography,<sup>12</sup> electrophoresis,<sup>13</sup> membrane separation,<sup>14,15</sup> and affinity chromatography.<sup>16</sup> These methods have some disadvantages such as high cost and complex processes. Aqueous biphasic systems (ABSs)<sup>17,18</sup> have emerged as a green extraction technology and they have been intensively studied. ABSs exhibit two immiscible phases. This spontaneously occurs between water-soluble substances when the concentrations of the components exceed the critical point. Compared with traditional liquid–liquid separation methods, both the phases of ABSs contain abundant water, which can provide a moderate environment for biomolecule extraction.<sup>19–21</sup> Therefore, ABSs are usually used to extract bioactive molecules such as proteins, nucleic acids, enzymes, and drugs.

Traditional ABSs generally comprise polymers and inorganic salts or different kinds of polymers. As green solvents, ionic liquids (ILs)<sup>22,23</sup> are used in ABSs to widen the scope of liquid–liquid separation. IL-based ABSs were first reported by Bridges in 2003.<sup>24</sup> Then, more and more researchers focused on the application of these systems in biological separation because of

<sup>a</sup>State Key Laboratory of Chemo/Biosensing and Chemometrics, College of Chemistry and Chemical Engineering, Hunan University, Changsha, 410082, P. R. China. E-mail: wyzss@hnu.edu.cn; Fax: +86-731-88821848; Tel: +86-731-88821903

<sup>b</sup>Department of Microbiology, College of Basic Medicine, Central South University, Changsha, 410083, P. R. China

† Electronic supplementary information (ESI) available. See DOI: 10.1039/c9ra00519f



their remarkable biocompatibility, excellent extraction efficiency, and short separation time. However, ILs have the drawbacks of complex synthesis and purification processes. Also, some ILs contain pyridinium or imidazolium ions, which are not completely environment-friendly. To avoid these disadvantages, DESs as novel green solvents can replace ILs to form ABSs for the extraction of biomolecules. Li *et al.* explored a series of new green DESs and constructed DES-based ABSs to extract proteins.<sup>25</sup> Zhang *et al.* investigated the ABSs formed by novel PEG-based DESs and used them for RNA extraction.<sup>26</sup> Xu *et al.* discovered novel ABSs composed of ILs and DESs for DNA extraction.<sup>27</sup>

To further enrich the category of ABSs, ABSs composed of two different DESs are studied in this work. Herein, one kind of DES comprised tetrabutylammonium chloride and polypropylene glycol 400 ([TBAC][PPG400]), while five other types of DESs were based on amino acids and polyols ([amino acids][polyols]). The phase-forming capacity of [TBAC][PPG400]/[amino acids][polyols]-based ABSs was discussed by making a comparison with those of [TBAC][PPG400]/amino acids and [TBAC][PPG400]/polyols. To assess the extraction ability of these ABSs, proteins were selected as the target analytes in this study. Furthermore, the studied ABSs were employed to investigate the influences of some factors on the extraction process. The porcine pancreas was utilized to explore the practical application of this system. At last, the conformation of the proteins was ascertained by UV-Vis spectrophotometry (UV-Vis), Fourier transform infrared spectroscopy (FT-IR), and circular dichroism (CD) spectroscopy. The extraction mechanism was confirmed *via* conductivity, dynamic light scattering (DLS), and transmission electron microscopy (TEM). A schematic of the extraction process is described in Scheme 1.

## 2. Experimental

### 2.1. Reagents and instruments

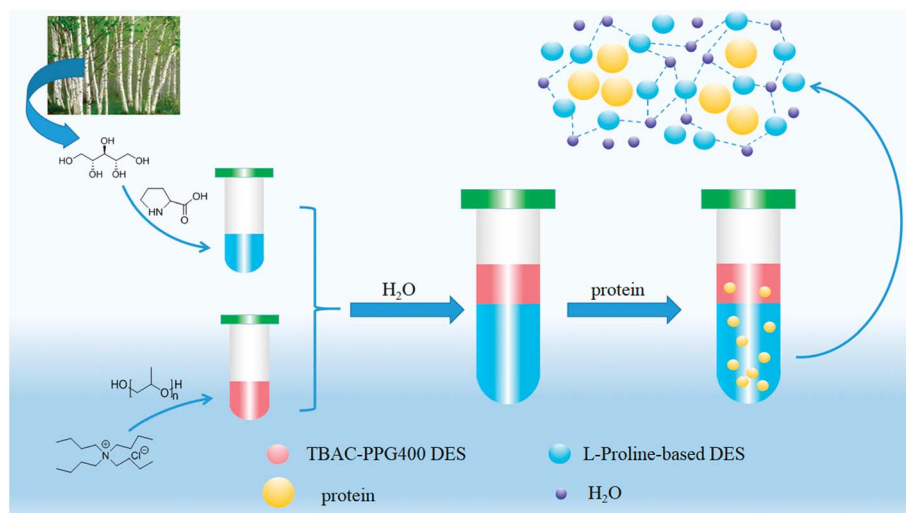
The materials required for DESs synthesis were prepared as follows. L-Proline, xylitol, and tetrabutylammonium chloride

(TBAC) were received from Shanghai Source Biological Technology Co., Ltd. D-Sorbitol, glycerol, and lysine were supplied by Sinopharm Chemical Reagent Co., Ltd. Ethylene glycol was provided by Shanghai Titan Scientific Co., Ltd. Polypropylene glycol polymers with average molecular weight of 400 g mol<sup>-1</sup> (PPG400) were acquired from Shanghai Macklin Biochemical Co., Ltd. The biomolecule bovine serum albumin (BSA) was obtained from Sinopharm Chemical Reagent Co., Ltd., and chymotrypsin and lysozyme (Lyz) were obtained from Shanghai Source Biological Technology Co., Ltd. A further purification procedure for the reagents was not required to be conducted.

A DF-101S heat collection-constant temperature type magnetic stirrer (Henan, China) was used to synthesize the deep eutectic solvents. The structural characterizations of DESs were determined by FT-IR spectroscopy (PerkinElmer, USA) and proton nuclear magnetic resonance spectroscopy (<sup>1</sup>H NMR) (INOVA-400, Varian, USA). The aqueous biphasic systems were mixed by the QYC200 incubator shaker (Shanghai, China) and centrifuged by a TGL-16C high-speed centrifuge. The quantification of the protein solutions was achieved by the UV2450 UV-Vis spectrophotometer (Shimadzu, Japan). Circular dichroism (CD) spectra of the proteins were recorded by an MOS-500 Circular Dichroism Spectrometer (Bio-Logic, France). A Zeta-sizer Nano-ZS90 dynamic light scattering instrument (DLS, Malvern, Britain) and a JEM-3010 transmission electron microscope (TEM, JEOL, Japan) were used to prove the cluster phenomena.

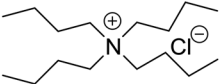
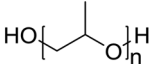
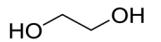
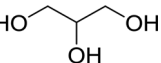
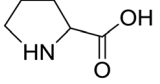
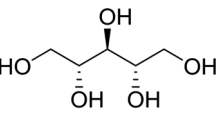
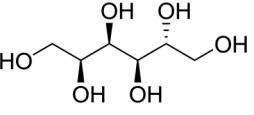
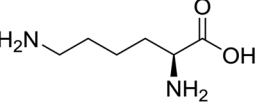
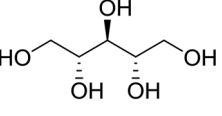
### 2.2. Synthesis and characterization of DESs

In this work, six types of deep eutectic solvents were successfully synthesized by hydrogen bond acceptors (TBAC, L-proline, and lysine) and hydrogen bond donors (PPG 400, glycerol, ethylene glycol, D-sorbitol, and xylitol).<sup>5,28–30</sup> The structures and compositions of these DESs are shown in Table 1. The eutectic mixtures were obtained as follows: the components at a proper molar ratio were mixed and then heated with sustained magnetic stirring until an even and steady liquid was observed.



Scheme 1 [TBAC][PPG400]/[Pro][Xyl]-based ABS for proteins extraction process.

Table 1 The structures and compositions of the studied DESs

Hydrogen bond acceptor (HBA)	Hydrogen bond donors (HBD)	Abbreviation	Molar ratio (HBA : HBD or HBA : HBD : H <sub>2</sub> O)
 Tetrabutylammonium Chloride (TBAC)	 Polypropylene glycol 400 (PPG400)	[TBAC][PPG400]	1 : 2
	 Ethylene glycol (EG)	[Pro][EG]	1 : 3
	 Glycerol (G)	[Pro][G]	1 : 3
 L-proline (Pro)	 Xylitol (Xyl)	[Pro][Xyl]	1 : 1 : 5
	 D-sorbitol (Sor)	[Pro][Sor]	1 : 1 : 5
 Lysine (Lys)	 Xylitol (Xyl)	[Lys][Xyl]	1 : 1 : 5

For instance, the synthetic method of [TBAC][PPG400] is presented in Fig. 1. FT-IR was applied to characterize the prepared DESs (ESI, Fig. S1–S6<sup>†</sup>). The broad absorption peaks at approximately 3300 cm<sup>-1</sup> demonstrated abundant hydrogen bonds in DESs. Compared with the observations for amino acids and polyols, the blueshift of C=O (about 1620 cm<sup>-1</sup>) and

C–O (about 1100 cm<sup>-1</sup>) in [amino acids][polyols] indicated the formation of hydrogen bonds.<sup>31</sup> Additionally, proton nuclear magnetic resonance spectra (<sup>1</sup>H NMR) were used to analyze the structure of DESs (ESI, Fig. S7–S14<sup>†</sup>). Due to the difficulty in dissolving all the synthetic DESs in deuterated dimethylsulfoxide (DMSO) or chloroform (CDCl<sub>3</sub>), deuterioxide (D<sub>2</sub>O) was

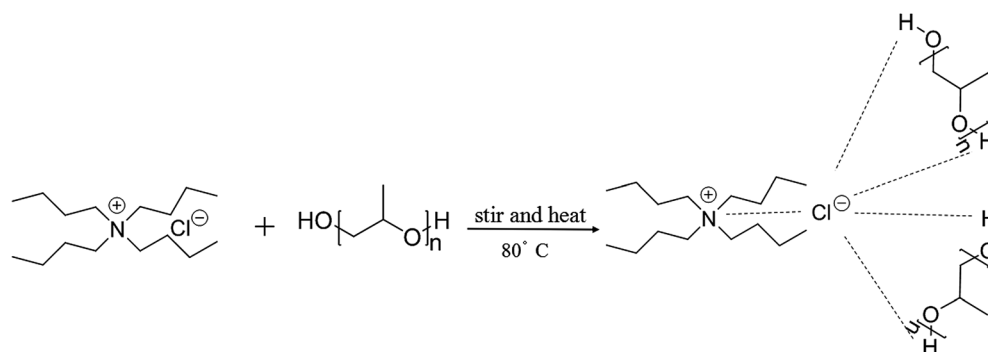


Fig. 1 The synthetic route of [TBAC][PPG400].

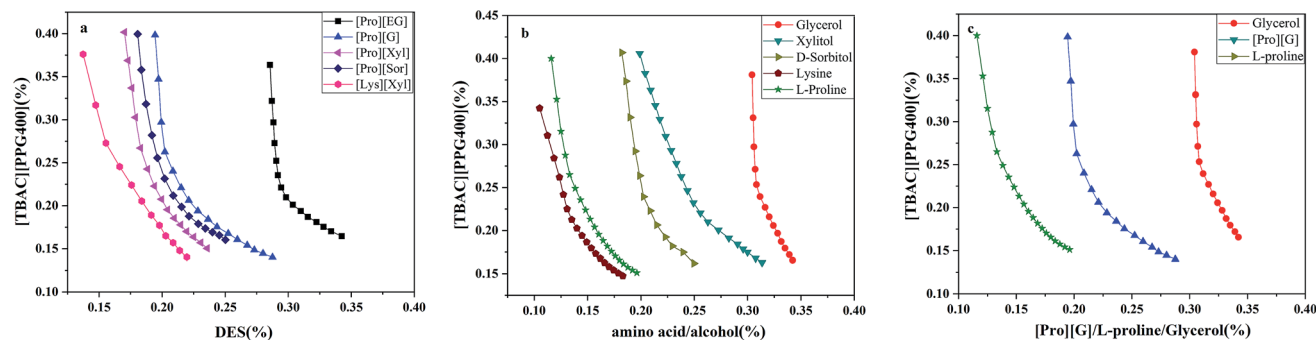


Fig. 2 Phase diagrams of ABSs at 25 °C: (a) ABS composed of [TBAC][PPG400] and [amino acids][polyols]; (b) ABS composed of [TBAC][PPG400] and amino acids/polyols; (c) ABS composed of [TBAC][PPG400] and [Pro][G]/L-proline/glycerol.

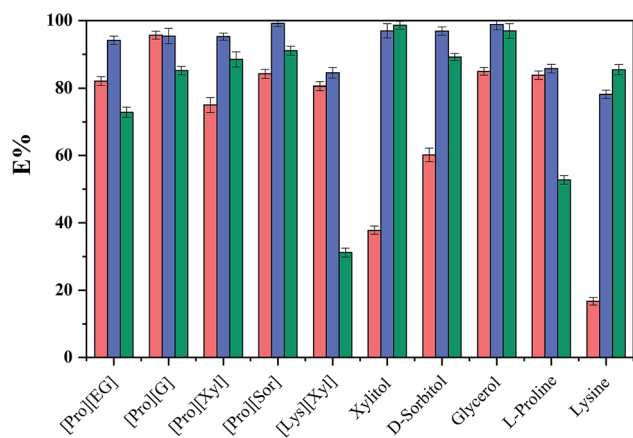


Fig. 3 The extraction efficiencies ( $E$ ) of ABSs for diverse substances (red, blue and green correspond to chymotrypsin, Lyz, and BSA).

selected as the solvent, which may result in the disappearance of the active hydrogen atoms such as N–H or O–H. This was proven by the disappearance of the active hydrogen atoms in L-proline and ethylene glycol ( $D_2O$  as the solvent).

### 2.3. Preparation of phase diagrams

The turbidimetric titration method was employed in drawing the phase diagrams at indoor temperature and atmospheric pressure.<sup>32</sup> First, well weighed phase-forming agents were mixed in a 10 mL centrifuge tube until the mixture became muddy, which implied that the biphasic region was generated. Then, deionized water was added dropwise into the solution until a transparent state was observed, suggesting that the monophasic region was achieved. A number of phase transition points were acquired by repeating the above procedures. Finally, a liquid–liquid equilibrium binodal curve was obtained by calculating the mass fractions of individual constituents as the  $X$  axis and  $Y$  axis values.

### 2.4. Partitioning of the proteins in ABSs

In this study, three kinds of proteins (chymotrypsin, BSA, and Lyz) were chosen to evaluate the extraction abilities of ABSs. Certain amounts of phase-forming components were mixed in

10 mL centrifuge tubes to form ABSs. Afterwards, proteins (about 10 mg) were added into the systems. In order to achieve complete extraction and splitting phases, the centrifuge tubes were shaken in a thermostats cultivating shaker for 20 min at 200 rpm and then centrifuged for 5 min at 3000 rpm. The volumes of the top and bottom phases were recorded after reaching two-phase equilibrium. The liquids of the top and bottom phases were separated and diluted. The concentrations of proteins were identified through the UV-Vis spectrophotometer at 280 nm. The partition coefficient ( $K$ ), phase volume ratio ( $R$ ), and extraction efficiency ( $E$ ) of the proteins are defined as follows:

$$K = \frac{C_t}{C_b}$$

$$R = \frac{V_t}{V_b}$$

$$E\% = \frac{C_b V_b}{C_b V_b + C_t V_t} = \frac{1}{1 + KR}$$

Here,  $C_t$  and  $C_b$  express the concentrations of proteins in the top and bottom phases after extraction, respectively;  $V_t$  and  $V_b$  denote the volumes of the top phase and the bottom phase, respectively.

### 2.5. Preparation of porcine pancreas crude extract

According to previous literature,<sup>33</sup> 50 g shredded fresh porcine pancreas tissue and 150 mL acetate buffer (0.1 M, pH 4.0) were mixed in a round-bottom flask and stirred at low temperature for 12 h. Afterwards, the pancreas homogenate was centrifuged at 5000 rpm for 30 min and separated to obtain the filtrate. Then, 10 mL  $CaCl_2$  solution (0.3 M) and 8 mg pure chymotrypsin were blended with the filtrate to activate proteolysis. Subsequently, Tris–HCl (50 mM, pH 7.5) and NaOH solutions were used to regulate the solution pH to 8.0. After that, the solution was stirred for 3 h at 25 °C. The HCl solution was used to improve the pH of the mixture to 5.5. At last, the centrifugation process (7000 rpm, 30 min) was indispensable to get the final porcine pancreas crude extract.

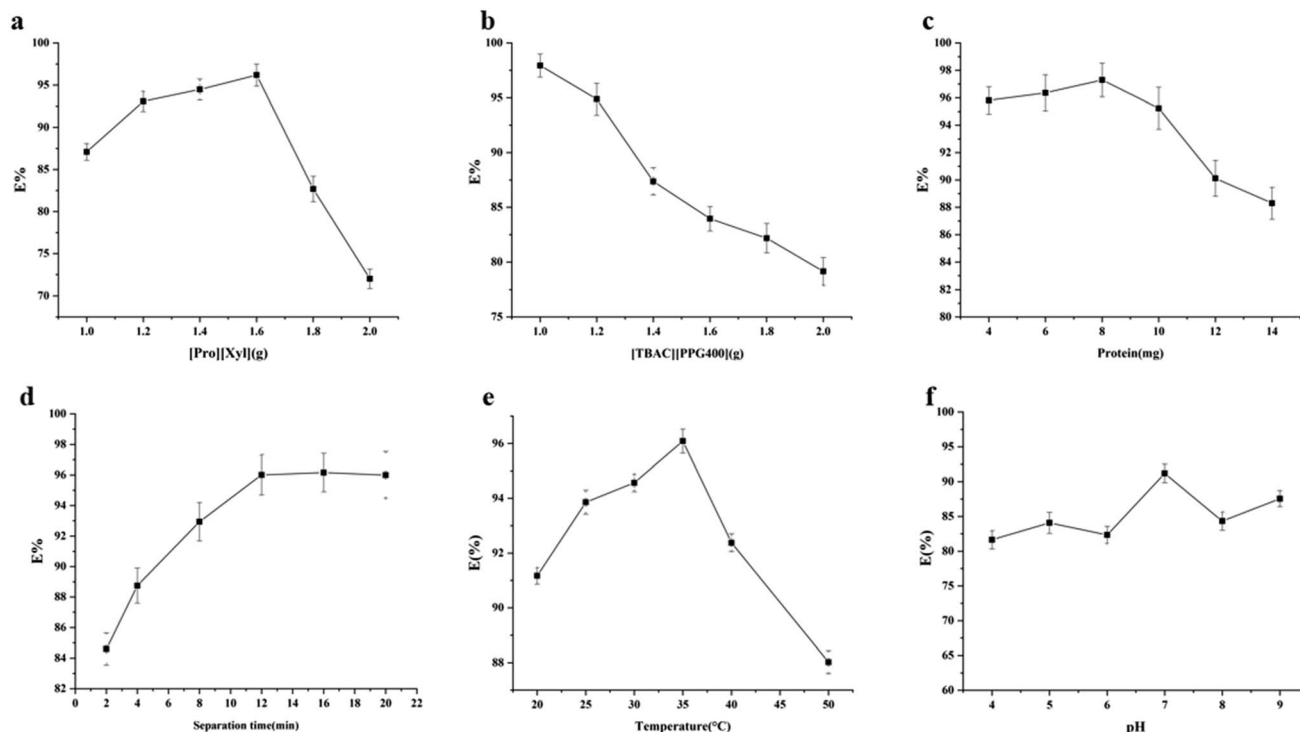


Fig. 4 Influencing factors in the protein extraction process: (a) mass of [Pro][Xyl]; (b) mass of [TBAC][PPG400]; (c) amount of the proteins; (d) separation time; (e) temperature; (f) pH.

### 3. Results and discussion

#### 3.1. Equilibrium phase behavior

The stability of this system was certified by elemental analysis. According to previous literature,<sup>34</sup> the non-stoichiometric

partition of HBA and HBD between two phases can be observed when DESs are destroyed. ABS combined with 1.0 g [TBAC][PPG400] and 1.6 g [Pro][Xyl] was applied to determine the stability of DES/DES-based ABS. Chlorine only existed in [TBAC][PPG400]; thus, the elemental analysis of the [Pro][Xyl] phase was conducted after extraction. The results are exhibited in Table S1.† If [TBAC][PPG400] was disrupted completely, the concentration of chlorine would be  $0.0109 \text{ g mL}^{-1}$  in the bottom phase in theory. The detectable concentration of chlorine was  $0.000672 \text{ g mL}^{-1}$ . After calculation, it was found that 6.13% [TBAC][PPG400] distributed into the bottom phase. A negligible amount of DES was decomposed, which can be neglected. The results indicated that ABSs were composed of [TBAC][PPG400] and [Pro][Xyl] in this work.

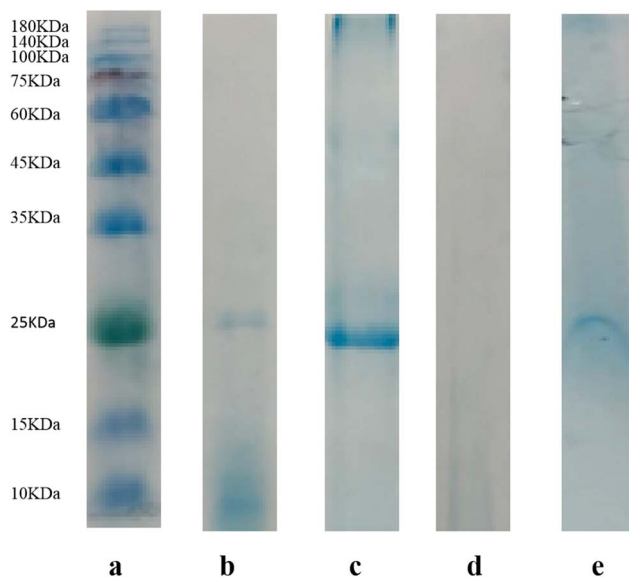


Fig. 5 SDS-PAGE analysis of the proteins: (a) molecular mass standard; (b) commercial pure chymotrypsin; (c) the sample of crude bovine pancreas extract; (d) the top phase after the extraction of crude bovine pancreas extract; (e) the bottom phase after the extraction of crude bovine pancreas extract.

Table 2 Results of the method validation experiments

#### Apparatus precision

Repeats	1	2	3	4	5
Extraction efficiency	96.29%	96.75%	96.60%	96.30%	95.99%
RSD (%)	0.3084				

#### Repeatability experiment

Sample number	1	2	3	4	5
Extraction efficiency	97.06%	97.36%	95.69%	97.82%	96.00%
RSD (%)	0.9415				

#### Stability experiment

Day number	1	2	3	4	5
Extraction efficiency	94.62%	96.75%	91.87%	97.06%	98.43%
RSD (%)	2.6739				

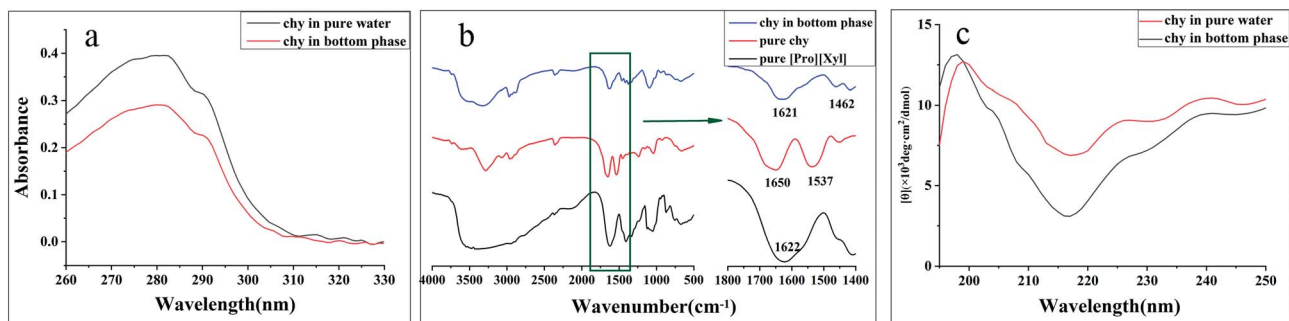


Fig. 6 The conformational characterization of chymotrypsin before and after extraction: (a) UV-Vis spectra; (b) FT-IR spectra; (c) CD spectra.

The phase diagrams offered some informations about the composition of the two-phase systems, which were crucial for separation and extraction. In the phase diagrams, the mixtures above the bi-nodal curves can develop two phases, while the systems in the remaining area are monophasic. The closer the curve to the ordinate origin, the stronger the phase-forming ability was. In this part, three kinds of ABSs, namely, [TBAC][PPG400]/[amino acids][polyols], [TBAC][PPG400]/amino acids, and [TBAC][PPG400]/polyols were used to investigate the biphasic-forming abilities. In all the systems, most of [TBAC][PPG400] occurred in the top phase, while the bottom phase comprised amino acids/polyols/[amino acid][polyols]. The phase diagrams are exhibited in Fig. 2.

From Fig. 2a, the phase-forming abilities of [amino acids][polyols] can be obtained: [Lys][Xyl] > [Pro][Xyl] > [Pro][Sor] > [Pro][G] > [Pro][EG]. The complex factors such as viscosity, density, and hydrophilic property resulted in different phase-forming abilities of DESSs. The hydrophilic property was the primary factor.<sup>25</sup> Therefore, the higher the hydrophilic property of [amino acids][polyols], the fewer the [TBAC][PPG400] required to promote phase splitting.

In Fig. 2b, the phase-forming abilities of the individual DES components are shown: lysine > L-proline > D-sorbitol > xylitol > glycerol. It was clear that the amino acids acting as the phase-

forming components exhibited stronger competence in producing a second phase than the polyols. This was because the amino acids presented a stronger salting-out effect,<sup>35</sup> resulting in higher affinity for water and easier creation of hydration complexes. This rendered superior potential for developing ABSs. Furthermore, the polyols manifested relatively weak salting-out property.<sup>36</sup> In addition, the impact of the polyols' nature on the phase-forming ability was explored as well. It was clear that the ability decreased when the length of the alkyl chains and the number of the hydroxyl groups simultaneously increased. On the one hand, the hydrophobicity of the polyols improved with the increase in the carbon chain length,<sup>37</sup> indicating decreasing attraction to water and further resistance to phase formation. On the other hand, owing to the presence of more -OH groups, the polyols' hydrophilicity was stronger,<sup>36,38</sup> which increased the hydrogen bonding interaction with water molecules and enhanced the phase-splitting ability. Therefore, compared with the alkyl chain length of the polyols, the number of the hydroxyl groups is a more dominant factor in the phase separation process.

Fig. 2c exhibits the phase-forming abilities of amino acids, polyols, and [amino acids][polyols]. The results are as follows: L-proline > [Pro][G] > glycerol. Compared with the isolated amino

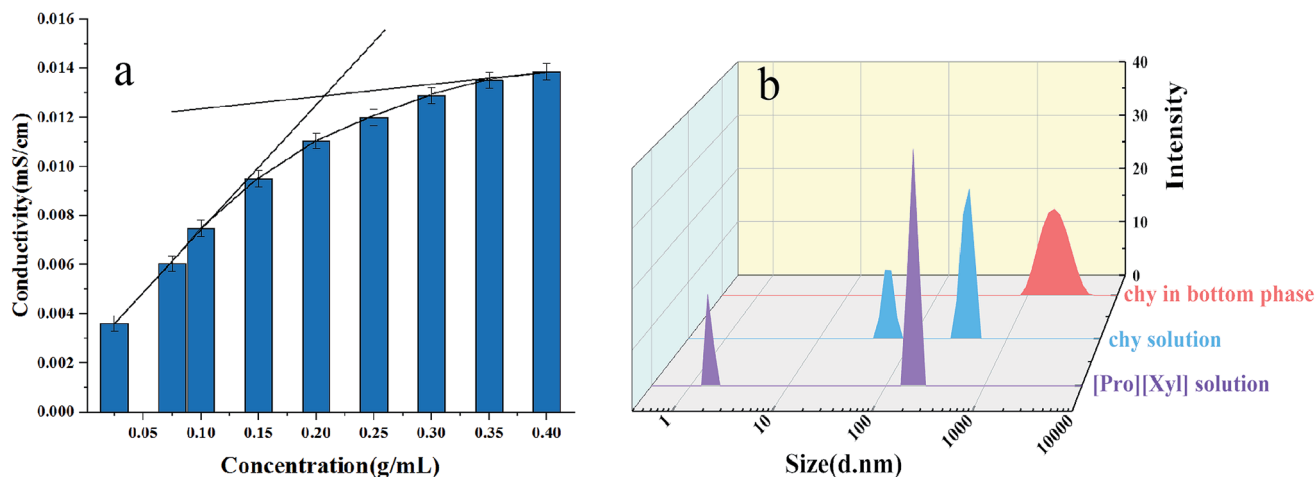


Fig. 7 Investigation of mechanism: (a) conductivity of [Pro][Xyl]; (b) size distribution before and after extraction.

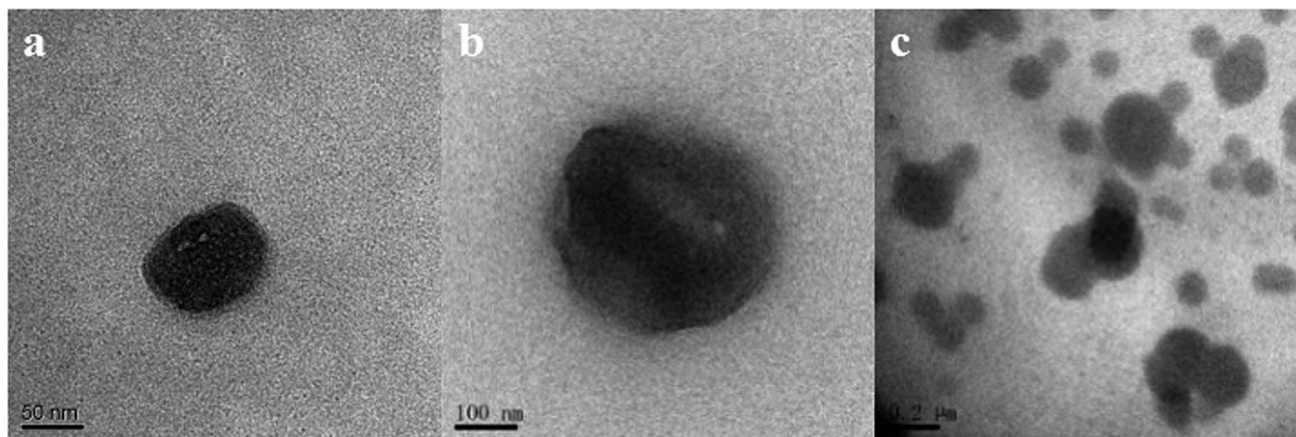


Fig. 8 TEM images of (a) [Pro][Xyl] solution; (b) chymotrypsin solution; (c) chymotrypsin in the [Pro][Xyl]-rich phase.

acids, [amino acids][polyols] existed in weak salting-out species and thus had more difficulty in achieving ABSs.

In conclusion, the abilities to form ABSs were related to the hydrophobicity of different components.<sup>38</sup> The trend can be described as follows: the additional the hydrophilic components combined with more hydrophobic components, the easier it was to form ABSs.

### 3.2. Extractability of different ABSs

To evaluate the extraction performance of different ABSs on three analytes (chymotrypsin, BSA, and Lyz), [amino acids][polyols] and [TBAC][PPG400] were used to produce bi-phasic systems. As a comparison, [TBAC][PPG400]/amino acids (*L*-proline and lysine) and [TBAC][PPG400]/polyols (xylitol, *D*-sorbitol, glycerol, and ethylene glycol) were also explored. After accomplishing extraction, a UV-Vis spectrophotometer was used to detect the concentrations of the proteins at 280 nm. As seen in Fig. 3, every kind of ABS has different extraction abilities for the proteins. For the ABSs mentioned above, except for BSA in [TBAC][PPG400]/[Lys][Xyl] and chymotrypsin in [TBAC][PPG400]/xylitol and [TBAC][PPG400]/lysine, most of the proteins were distributed into the bottom phase. The extraction efficiencies of [TBAC][PPG400]/amino acids ranged from 52.72% to 85.73%. The extraction efficiencies of [TBAC][PPG400]/polyol ABSs ranged from 60.16% to 98.85%. For ABSs with two DESs, the extraction efficiencies ranged from 72.87% to 99.15%. This signified that the studied systems exhibited outstanding extraction performance for the proteins.

In this work, chymotrypsin served as the model protein and [Pro][Xyl] with [TBAC][PPG400] systems were chosen to further optimize the extraction performance in the influencing factor experiments.

### 3.3. Single factor experiments

**3.3.1. Effect of the mass of [Pro][Xyl].** ABSs composed of [TBAC][PPG400] (1.2 g), [Pro][Xyl] (1.0–2.0 g), chymotrypsin (10 mg), and H<sub>2</sub>O (1.5 mL) were used to explore the effect of the mass of [Pro][Xyl]. As the DES mass increased, the extraction performance increased at first and then decreased (Fig. 4a). The extraction efficiency increased when the amount of DES ranged from 1.0 to 1.6 g. This was because the proteins and DES generated new aggregates in the bottom phase. The more the addition of DES, the larger the quantity and dimension of DES aggregates, which implied that more proteins were aggregated in the bottom phase. Nevertheless, the extraction efficiency decreased when the gross amount of DES exceeded 1.6 g. It was interpreted that the viscosity of the bottom phase became higher on further increasing the amount of DES, which hindered the proteins from transferring into the bottom phase. Therefore, 1.6 g [Pro][Xyl] was selected to further optimize the experiments.

**3.3.2. Effect of the mass of [TBAC][PPG400].** [TBAC][PPG400]/[Pro][Xyl] (1.6 g)/H<sub>2</sub>O (1.5 mL) ABSs were applied to study the effect of [TBAC][PPG400] on the enhancement of extraction efficiency. The results are depicted in Fig. 4b. The extraction efficiency continually decreased as the mass of

Table 3 Comparison of DES/DES-based ABSs with other ABSs

ABS	Extraction target	Detection technique	Extraction efficiency	Limit of detection	References
Polymer/salt	BSA	Bradford method with Coomassie Blue G250	99%	—	40
IL/salt	Wheat-esterase	Bradford method using BSA as a standard	88.93%	—	41
DES/salt	BSA	UV-Vis spectrophotometer	95.16%	—	42
DES/DES	Chy	UV-Vis spectrophotometer	97.30%	0.01357 mg mL <sup>-1</sup>	This work

[TBAC][PPG400] increased. It was possibly clarified that the addition of [TBAC][PPG400] resulted in more DES aggregations in the top phase, which prompted more proteins to aggregate into the top phase. Additionally, the content of water molecules was significant in extracting proteins because the proteins remained active through the hydrogen bonding interaction between the water molecules and the amino acid residues of the proteins. The more the [TBAC][PPG400] added, the more the water distributed into the top phase, due to which more proteins were transferred into the top phase. As a result, the optimal mass of [TBAC][PPG400] was 1.0 g.

**3.3.3. Effect of the amount of the protein.** To explore the effect of the proteins' mass on the extraction process, [TBAC][PPG400] (1.0 g), [Pro][Xyl] (1.6 g), H<sub>2</sub>O (1.5 mL), and chymotrypsin (4.0–14.0 mg) ABSs were prepared for investigation. As shown in Fig. 4c, the extraction efficiency increased slightly to maximum on increasing the initial amount of proteins. However, once the mass exceeded 8.0 mg, the extraction efficiency decreased sharply with the addition of proteins. The reason for this variation tendency is that the extraction system possessed limited ability to extract chymotrypsin. When the amount of chymotrypsin reached 8.0 mg, the bottom phase was saturated and had no space for other chymotrypsin species, resulting in the reduction of the extraction efficiency. Thus, the optimum chymotrypsin mass for this system was 8.0 mg.

**3.3.4. Effect of the splitting time.** To find out the appropriate separation time, [TBAC][PPG400] (1.0 g)/[Pro][Xyl] (1.6 g)/H<sub>2</sub>O (1.5 mL) ABSs with 8 mg chymotrypsin were used and the separation times were controlled at 2, 4, 8, 12, 16, and 20 min. It can be observed from Fig. 4d that the extraction efficiency attains extraction equilibrium within 12 min and remains nearly unchanged with additional separation time. Hence, 12 min was the most suitable splitting time.

**3.3.5. Effect of temperature.** Temperature is a vital factor in the extraction process. [TBAC][PPG400] (1.0 g)/[Pro][Xyl] (1.6 g)/H<sub>2</sub>O (1.5 mL) ABSs were formed to extract 8 mg chymotrypsin at 20–50 °C. Fig. 4e exhibits the trend of extraction ability. When the temperature was lower than 35 °C, the extraction efficiency enhanced with the rise in temperature. This phenomenon can be interpreted as follows: the viscosity of the systems decreased and the velocity of diffusion accelerated when the temperature increased. However, once the temperature exceeded 35 °C, the extraction efficiency declined gradually. This was because a higher temperature impaired the hydrogen bonding interactions existing in the amino acid residues and the surface water molecules of the proteins, which was unfavourable for the extraction process. Thus, 35 °C was identified as the best extraction temperature.

**3.3.6. Effect of pH.** Proteins have amphoteric characteristics; different pH values can transform their surface charged states, which influences the extraction of proteins. Because the isoelectric point of chymotrypsin is 8.1, phosphate buffer (1.5 mL, with pH ranging from 4.0 to 9.0), [TBAC][PPG400] (1.0 g), [Pro][Xyl] (1.6 g), and chymotrypsin (8 mg) were used to conduct the extraction at 35 °C. The extraction results are revealed in Fig. 4f. When the pH of the solution was changed, the extraction efficiency maintained a lower value and exhibited a slight

fluctuation compared with that of deionized water. Hence, electrostatic interaction was not the major force for chymotrypsin extraction in this system. Deionized water was selected to offer the extraction environment in the following study.

Based on the single factor experimental results, the optimal extraction conditions were as follows: [Pro][Xyl] (1.6 g), [TBAC][PPG400] (1.0 g), chymotrypsin (8.0 mg), splitting time of 12 min, and extraction temperature of 35 °C. The maximum extraction efficiency attained under these conditions was 97.30%.

### 3.4. Analysis of practical samples

In order to confirm the practical application of [TBAC][PPG400]/[Pro][Xyl]-based ABS for chymotrypsin extraction, 1.5 mL porcine pancreas crude extract was added into ABSs. After extraction, SDS-PAGE was applied to detect the proteins in the top and bottom phases. The electrophoretograms are depicted in Fig. 5: Lane a denotes the protein molecular mass standard. Lane b denotes the commercial pure chymotrypsin (25 kDa) and Lane c stands for the sample of porcine pancreas crude extract before extraction. The bands of the top and bottom phases after extraction are shown in Lane d and Lane e, respectively. From the electrophoresis images, it is clear that the samples of crude porcine pancreas and pure chymotrypsin are in the same position (25 kDa), which demonstrates the existence of chymotrypsin. Besides, the chymotrypsin (25 kDa) band distinctly appears in the bottom phase, while no band emerges in the top phase. The electrophoresis result indicated that [TBAC][PPG400]/[Pro][Xyl] ABSs successfully accomplished chymotrypsin extraction from the porcine pancreas crude extract.

### 3.5. Methodological study

To demonstrate the validity of the developed method, limit of detection (LOD), precision, repeatability, and stability parameters were assessed. The data obtained are shown in Table 2. The calibration equation of chymotrypsin was  $y = 1.3465x - 0.0214$  and the correlation coefficient ( $R$ ) was 0.9995, manifesting the good linear relationship of the analyte. The calculated LOD value was 0.01357 mg mL<sup>-1</sup> in this system. Regarding the precision of the apparatus, a UV-Vis spectrophotometer was used to measure the bottom phase solution five times under the same ABS conditions. The relative standard deviation (RSD) value was 0.3084%. A repeatability experiment was carried out by detecting five replicates from the same ABS sample. The RSD value obtained was 0.9415%. The stability of the system was evaluated *via* the same sample detection for five sequential days. The RSD value calculated was 2.6132%. The experimental data showed that the DES/DES-based ABSs in this work exhibited excellent precision, favorable repeatability, and excellent stability.

### 3.6. Extraction mechanism

**3.6.1. UV-Vis spectra.** To study the conformation of chymotrypsin in the extraction process, pure and extracted proteins were analyzed by UV-Vis spectroscopy and the spectra



are presented in Fig. 6a. Both chymotrypsin maximal absorption spikes appeared around 280 nm and the shapes remained the same. This indicated that no chemical bonds were generated between the chymotrypsin molecules and DESs.

**3.6.2. FT-IR spectra.** FT-IR spectra provided plentiful information about the configuration of proteins, which included typical amide A, B, and I–VII IR absorption bands of the proteins. Amide I and amide II played a decisive role in the protein backbone. The amide I band at 1700–1600  $\text{cm}^{-1}$  belonged to the C=O stretching vibration. The amide II band at 1575–1480  $\text{cm}^{-1}$  was attributed to the C=N stretching vibration.<sup>39</sup> The FT-IR spectra of pure [Pro][Xyl], pure chymotrypsin, and chymotrypsin extracted in the bottom phase are depicted in Fig. 6b. Compared to the observation for the FT-IR spectra of pure chymotrypsin with DES–protein complexity, the positions of the amide I band and amide II band were nearly unchanged. The above-mentioned result validated that the conformation of chymotrypsin was maintained in the extraction process.

**3.6.3. Circular dichroism (CD) spectra.** Circular dichroism spectroscopy is a common means to monitor the secondary structure of proteins because proteins exhibit typical far-ultraviolet absorption bands in the CD spectra. For example, the  $\beta$ -sheet structure of proteins displays negative ellipticity at 216 nm and positive ellipticity at 185–200 nm in the far-ultraviolet CD spectra.<sup>40</sup> In this study, the scanned range was set at 190–250 nm. Fig. 6c exhibits the CD spectra of chymotrypsin before and after extraction. The spectrum shapes were similar and the characteristic ellipticities of the  $\beta$ -sheet structure were nearly in the same position. It can be concluded that the secondary structure of proteins was  $\beta$ -sheet and chymotrypsin was stable in ABSs.

**3.6.4. Dynamic light scattering.** To sufficiently comprehend the extraction mechanism, the microstructure of the bottom phase was observed by DLS. Fig. 7a shows the conductivities of the [Pro][Xyl] solution at different concentrations. In the curve of conductivity, two linear tangents are drawn and the critical aggregation concentration (CAC) is decided by the junction of two linear tangents. The CAC value was almost 0.21  $\text{g mL}^{-1}$  for [Pro][Xyl]. The DES concentration used in this work was higher than CAC, indicating that DES aggregates were produced.

The particle size distributions of chymotrypsin solution, DES solution, and the bottom phase after extraction are shown in Fig. 7b. It was clear that the largest particle dimension appeared in the extracted bottom phase solution (around 1990 nm) compared with the observations for the pure protein solution (around 400 nm) and DES solution (around 190 nm). The graph illustrates that the protein–DES aggregates are generated.

**3.6.5. Transmission electron microscopy.** Transmission electron microscopy (TEM) is a powerful tool for further proving the cluster phenomenon. The TEM images of chymotrypsin, DES, and the extracted proteins are given in Fig. 8. As described in the images, DES aggregates and chymotrypsin particles are spherical and the proteins are surrounded by the DES aggregates after extraction. Therefore, aggregate formation is the crucial driving force in the protein extraction process.

## 4. Comparison with other ABSs

In order to explore the extraction effect of DES/DES-based ABSs, the prepared ABSs were compared with three representative ABSs (polymer/salt-based ABSs, IL/salt-based ABSs, and DES/salt-based ABSs). The results are shown in Table 3. All the comparative ABSs exhibited high extraction efficiencies. In traditional ABSs, inorganic salts were used to form ABSs with polymers, ILs, or DESs. The salting-out ability of the salts plays a great role in the ABS formation. However, some salt-based ABSs are only formed within a certain pH range, which results in a certain pH environment for extraction.<sup>43,44</sup> For pH-sensitive substances, such as some proteins and enzymes, denaturation and conformational change can occur when the pH exceeds a certain range;<sup>42</sup> that is to say, these salt-based ABSs are not suitable for the extraction of pH-sensitive substances. Besides, the salts or ILs can induce ion exchange between the two phases in ABSs, which is unfavourable for extraction.<sup>44</sup> In this work, the DES/DES-based ABSs were free of any salt. Thus, the studied ABSs were more pH-adjustable and appropriate for the extraction of more substances.

## 5. Conclusions

This study exploited ABSs involving two different DESs for protein extraction. [TBAC][PPG400]/[Pro][Xyl] ABSs were used to discuss the influencing factors in the extraction process. The best extraction efficiency attained for chymotrypsin was 97.30% after optimization. The mechanism exploration experiments demonstrated that the configuration of the proteins remained unchanged and the cluster effect was the main driving force during the extraction process. The practical feasibility of the studied ABSs was proved by the successful extraction of chymotrypsin from porcine pancreas. All the results proved that the DES/DES-based ABSs exhibited excellent extraction performance for proteins. This revealed that the studied systems can provide a green extraction method for biomolecules in the separation and purification fields.

## Conflicts of interest

There are no conflicts to declare.

## Acknowledgements

The authors greatly appreciate the financial supports by the National Natural Science Foundation of China (No. 21675048).

## References

- 1 F. Chemat, M. A. Vian and G. Cravotto, *Int. J. Mol. Sci.*, 2012, **13**, 8615–8627.
- 2 A. P. Abbott, G. Capper, D. L. Davies, R. K. Rasheed and V. Tambyrajah, *Chem. Commun.*, 2003, **1**, 70–71.
- 3 M. Zdanowicz, K. Wilpizewska and T. Spychaj, *Carbohydr. Polym.*, 2018, **200**, 361–380.

- 4 P. S. Saravana, Y. N. Cho, H. C. Woo and B. S. Chun, *J. Cleaner Prod.*, 2018, **198**, 1474–1484.
- 5 L. Duan, L. Dou, L. Guo, P. Li and E. Liu, *ACS Sustainable Chem. Eng.*, 2016, **4**, 2405–2411.
- 6 M. Pirsahab and N. Fattahi, *RSC Adv.*, 2018, **8**, 11412–11418.
- 7 P. Zamani, J. Ozdemir, Y. Ha, M. Benamara, A. V. Kuchuk, T. Wang, J. Chen, A. R. Khosropour and M. H. Beyzavi, *Adv. Synth. Catal.*, 2018, **360**, 4372–4380.
- 8 M. Zhang, P. Liu, Y. Liu, Z. Shang, H. Hu and Z. Zhang, *RSC Adv.*, 2016, **6**, 106160–106170.
- 9 N. Li, Y. Wang, K. Xu, Q. Wen, X. Ding, H. Zhang and Q. Yang, *RSC Adv.*, 2016, **6**, 84406–84414.
- 10 C. Bai, Q. Wei and X. Ren, *ACS Sustainable Chem. Eng.*, 2017, **5**, 7220–7227.
- 11 J. Pang, X. Sha, Y. Chao, G. Chen, C. Han, W. Zhu, H. Li and Q. Zhang, *RSC Adv.*, 2017, **7**, 49361–49367.
- 12 E. Unsal, T. Irmak, E. Durusoy, M. Tuncel and A. Tuncel, *Anal. Chim. Acta*, 2006, **570**, 240–248.
- 13 M. Hajduch, R. Rakwal, G. K. Agrawal, M. Yonekura and A. Pretova, *Electrophoresis*, 2001, **22**, 2824–2831.
- 14 M. Z. M. Nor, L. Ramchandran, M. Duke and T. Vasiljevic, *J. Food Sci. Technol.*, 2015, **52**, 7103–7112.
- 15 S. Suwal, A. Doyen and L. M. Bazinet, *J. Membr. Sci.*, 2015, **496**, 267–283.
- 16 F. Wolschin, S. Wienkoop and W. Weckwerth, *Proteomics*, 2005, **5**, 4389–4397.
- 17 S. Xu, K. Lan, J. Li, T. He and C. Hu, *Sep. Purif. Technol.*, 2018, **204**, 281–289.
- 18 Z. Li, A. Chen, Z. Li, M. Qu, H. Chen, B. Yang and Y. Wang, *RSC Adv.*, 2017, **7**, 37659–37665.
- 19 S. S. Nadar, R. G. Pawar and V. K. Rathod, *Int. J. Biol. Macromol.*, 2017, **101**, 931–957.
- 20 Y. Pei, J. Wang, K. Wu, X. Xuan and X. Lu, *Sep. Purif. Technol.*, 2008, **64**, 288–295.
- 21 N. Li, Y. Wang, K. Xu, Q. Wen, X. Ding, H. Zhang and Q. Yang, *RSC Adv.*, 2016, **6**, 84406–84414.
- 22 X. Wang, L. Xing, Y. Shu, X. Chen and J. Wang, *Anal. Chim. Acta*, 2014, **837**, 64–69.
- 23 X. Chen, J. Liu and J. Wang, *Anal. Methods*, 2010, **2**, 1222–1226.
- 24 N. J. Bridges, K. E. Gutowski and R. D. Rogers, *Green Chem.*, 2007, **9**, 177–183.
- 25 N. Li, Y. Wang, K. Xu, Y. Huang, Q. Wen and X. Ding, *Talanta*, 2016, **152**, 23–32.
- 26 H. Zhang, Y. Wang, Y. Zhou, K. Xu, N. Li, Q. Wen and Q. Yang, *Talanta*, 2017, **170**, 266–274.
- 27 P. Xu, Y. Wang, J. Chen, X. Wei, W. Xu, R. Ni, J. Meng and Y. Zhou, *Talanta*, 2018, **189**, 467–479.
- 28 B. Zhuang, L. Dou, P. Li and E. Liu, *J. Pharm. Biomed. Anal.*, 2017, **134**, 214–219.
- 29 Y. Ma, M. Liu, T. Tan, A. Yan, L. Guo, K. Jiang, C. Tan and Y. Wan, *Phytochem. Anal.*, 2018, **29**, 639–648.
- 30 L. Yang, L. Li, H. Hu, J. Wan and P. Li, *Pharmaceutics*, 2019, **11**, 18.
- 31 W. Zhu, C. Wang, H. Li, P. Wu, S. Xun, W. Jiang, Z. Chen, Z. Zhao and H. Li, *Green Chem.*, 2015, **17**, 2464–2472.
- 32 K. E. Gutowski, G. A. Broker, H. D. Willauer, J. G. Huddleston, R. P. Swatloski, J. D. Holbrey and R. D. Rogers, *J. Am. Chem. Soc.*, 2003, **125**, 6632–6633.
- 33 K. Xu, Y. Wang, Y. Li, Y. Lin, H. Zhang and Y. Zhou, *Anal. Chim. Acta*, 2016, **946**, 64–72.
- 34 F. O. Farias, H. Passos, A. S. Lima, M. R. Mafra and J. A. Coutinho, *ACS Sustainable Chem. Eng.*, 2017, **5**, 9402–9411.
- 35 E. V. Capela, M. V. Quental, P. Domingues, J. A. P. Coutinho and M. G. Freire, *Green Chem.*, 2017, **19**, 1850–1854.
- 36 M. V. Quental, M. M. Pereira, A. M. Ferreira, S. N. Pedro, S. Shahriari, A. Mohamadou, J. A. P. Coutinho and M. G. Freire, *Green Chem.*, 2018, **20**, 2978–2983.
- 37 Y. Xie, H. Xing, Q. Yang, Z. Bao, B. Su and Q. Ren, *ACS Sustainable Chem. Eng.*, 2015, **3**, 3365–3372.
- 38 A. M. Ferreira, P. D. O. Esteves, I. Boal-Palheiros, A. B. Pereiro, L. P. N. Rebelo and M. G. Freire, *Green Chem.*, 2016, **18**, 1070–1079.
- 39 W. K. Surewicz, H. H. Mantsch and D. Chapman, *Biochemistry*, 1993, **32**, 389–394.
- 40 J. D. Morrisett, J. S. K. David, H. J. Pownall and M. G. Antonio, *Biochemistry*, 1973, **12**, 1290–1299.
- 41 Y. Lu, Y. Yang, X. Zhao and C. Xia, *Food Bioprod. Process.*, 2010, **88**, 40–46.
- 42 B. Jiang, Z. Feng, C. Liu, Y. Xu, D. Li and G. Ji, *J. Food Sci. Technol.*, 2015, **52**, 2878–2885.
- 43 J. Pang, X. Sha, Y. Chao, G. Chen, C. Han, W. Zhu, H. Li and Q. Zhang, *RSC Adv.*, 2017, **7**, 49361–49367.
- 44 J. Chen, Y. Wang, X. Wei, W. Xu, P. Xu, R. Ni and J. Meng, *ACS Sustainable Chem. Eng.*, 2019, **7**, 6078–6092.