

## Proteomic Analysis of Soybean [*Glycine max* (L.) Merrill] Roots Inoculated with *Bradyrhizobium japonicum* Strain CPAC 15

Adalgisa R. Torres<sup>1,\*</sup>, Elisete P. Rodrigues<sup>1,4,\*</sup>, Jesiane S.S. Batista<sup>1,5</sup>, Douglas F. Gomes<sup>1,3</sup> and Mariangela Hungria<sup>1,2</sup>

<sup>1</sup>Postdoctoral student, Embrapa Soja, Londrina, PR, Brazil. <sup>2</sup>Researcher, Embrapa Soja, Londrina, PR, Brazil. <sup>3</sup>Ph.D. student, Department of Genetics, Universidade Federal do Paraná (UFPR), Curitiba, PR, Brazil. <sup>4</sup>Professor, Department of Biology, Universidade Estadual de Londrina (UEL), Londrina, PR, Brazil. <sup>5</sup>Professor, Department of Structural Biology, Molecular and Genetics, Universidade Estadual de Ponta Grossa (UEPG), Ponta Grossa, PR, Brazil. \*A. R. Torres and E. P. Rodrigues contributed equally to the manuscript.

**ABSTRACT:** This research intended to analyze the expression pattern of proteins in roots of the Brazilian soybean cultivar Conquista when inoculated with *Bradyrhizobium japonicum* CPAC 15, a strain broadly used in commercial inoculants in Brazil. At ten days after bacterial inoculation, whole-cell proteins were extracted from roots and separated by 2-D gel electrophoresis. Comparative analysis revealed significant changes in the intensity of 37 spots due to the inoculation (17 up-regulated and 20 down-regulated proteins), identified by MALDI-TOF/TOF-TOF. Identified proteins were associated with COG functional categories of information storage and processing, cellular processes and signaling, metabolism, and also in the “poorly characterized” and “not in COG” categories. Among the up-regulated proteins, we identified sucrose synthase (nodulin-100),  $\beta$ -tubulin, rubisco activase, glutathione-S-transferase, a putative heat-shock 70-kDa protein, pyridine nucleotide-disulphideoxidoreductase and a putative transposase. Proteomic analysis allowed for the identification of some putative symbiotic functions and confirmed the main biological processes triggered in the nitrogen-fixing symbiosis with soybean.

**KEYWORDS:** *rhizobium*, 2-D, proteomics, soybean roots, symbiosis

**CITATION:** Torres et al. Proteomic Analysis of Soybean [*Glycine max* (L.) Merrill] Roots Inoculated with *Bradyrhizobium japonicum* Strain CPAC 15. *Proteomic Insights* 2013;6:7–11 doi:10.4137/PRI.S13288.

**TYPE:** Original Research

**FUNDING:** Research described herein was partially supported by CNPq (National Council for Scientific and Technological Development), Projects Genosoja and Repensa (562008/2010-1). MALDI-TOF system was acquired with resources from Fundação Araucária, State of Paraná. EPR, ART and JSSB received postdoc fellowships from CNPq and DFG a PhD fellowship from CAPES (Coordenação de Aperfeiçoamento de Pessoal de Nível Superior, Brazil). MH is also a research fellow of CNPq.

**COMPETING INTERESTS:** Authors disclose no potential conflicts of interest.

**COPYRIGHT:** © the authors, publisher and licensee Libertas Academica Limited. This is an open-access article distributed under the terms of the Creative Commons CC-BY-NC 3.0 License.

**CORRESPONDENCE:** [mariangela.hungria@embrapa.br](mailto:mariangela.hungria@embrapa.br); [hungria@pq.cnpq.br](mailto:hungria@pq.cnpq.br)

### Introduction

The symbiotic associations of soybean [*Glycine max* (L.) Merrill] with bacteria belonging to the species *Bradyrhizobium japonicum*, *B. diazoefficiens* and *B. elkanii* have global economic and social importance. Brazil is an outstanding example, as biological nitrogen fixation (BNF) by soybean crops represents a key process in agricultural production systems, resulting in estimated savings of about US\$15 billion in N-fertilizers per season.<sup>1</sup> The establishment of the symbiosis begins with the exchange of molecular signals between the bacterium and the host plant, involving a succession of complex processes which trigger profound changes in both symbionts. Once the plant

recognizes the specific Nod signal produced by the rhizobia, the plant follows a pre-determined developmental pathway to form the nodule. Nodule formation is a highly ordered process that involves the de-differentiation of root cortical cells and their subsequent division to form the mature organ.<sup>2–4</sup>

Proteomic analysis, which focuses on investigating the cumulative changes and modifications of proteins, helps to acquire a more comprehensive understanding of the responses occurring in host plants under symbiotic conditions.<sup>5</sup> Proteomic studies of soybean bradyrhizobia have been reported, including studies with *B. japonicum* CPAC 15 (= SEMIA 5079),<sup>6,7</sup> a strain belonging to the same serogroup as USDA



123 and broadly used in Brazilian commercial inoculants since 1992, due to symbiotic efficiency and competitiveness characteristics.<sup>1,8,9</sup> However, few genomic and proteomic studies have been reported with nodulated soybean, especially with Brazilian genotypes. Recently, Barros de Carvalho and collaborators<sup>4</sup> reported a transcriptional analysis of genes involved in nodulation of soybean cv. Conquista, when inoculated with strain CPAC 15, revealed a variety of transcripts related to primary metabolism, cell-wall modifications, and an antioxidant defense system. Complementing this study, we are now analyzing differential protein expression patterns in the same symbiosis of cultivar Conquista with strain CPAC 15.

## Material and Methods

**Plant material.** Soybean seeds (cultivar Conquista=MG/BR46) were surface-sterilized<sup>10</sup> and germinated on absorbent paper moistened with sterile distilled water at  $22 \pm 2^\circ\text{C}$  (in the dark) for three days. Seedlings were transferred to sterile plastic bags containing 200 mL of N-free nutrient solution.<sup>11</sup>

**Inoculum preparation and plant inoculation.** *B. japonicum* strain CPAC 15 (= SEMIA 5079) was grown until the exponential phase of growth in yeast mannitol broth (YMB).<sup>10</sup> The cells were centrifuged and washed with saline solution (NaCl 0.85%). Aliquots of washed cell suspension were counted in YMB medium, indicating a concentration of  $2.27 \times 10^7$  cells mL<sup>-1</sup>. For the inoculated treatment, 1 mL of the inoculum was applied at the base of each radicle of 3-day-old seedlings. The experiment had a fully randomized design with three replicates, each consisting of 20 plants per treatment. Treatments consisted of: soybean roots inoculated with strain CPAC 15 and non-inoculated soybean.

Plants were grown under greenhouse conditions with a 12-h day/night period and mean temperature of  $25\text{--}28^\circ\text{C}/15\text{--}18^\circ\text{C}$  (day/night) for ten days. Roots of 13-day-old soybean were then separated from shoots, immediately frozen in liquid nitrogen and stored at  $-80^\circ\text{C}$ . Effectiveness of inoculation was proven by the inspection of abundant nodule primordia at the harvest. As at this stage only nodule primordia were present, the analyses were performed on whole roots. To confirm that inoculation was successful, we left several plants to grow until flowering stage, when we confirmed abundant nodulation and high production of biomass and N content in the shoots.

**Proteomics analysis.** Whole-cell proteins of soybean roots were extracted from both the inoculated and control treatments following the simplified method described by Rodrigues et al.<sup>12</sup> Total-protein extract was solubilized in isoelectric focusing (IEF) buffer, quantified by the method described by Bradford<sup>13</sup> and mixed with DeStreak buffer (GE Healthcare) at a final concentration of 350  $\mu\text{g}$ , which was employed to rehydrate IPG strips (linear pH 4–7, 13 cm, GEBiosciences). 2-D assays were performed, as described by Rodrigues et al,<sup>12</sup> in triplicate and the gels were analyzed by Image Master 2D Platinum v. 5.0 (GE Healthcare),

after being stained with Coomassie Blue PhastGel<sup>TM</sup> R-350 (GE Healthcare). Well defined spots, present in all three gels, were selected, excised, and processed as described before.<sup>14</sup> Digestion was performed with trypsin (Gold Mass Spectrometry Grade, Promega) at  $37^\circ\text{C}$  overnight.

Mass spectra were acquired in a MALDI-TOF-TOF Autoflex Spectrometer (Bruker Daltonics), which was operated in the reflector mode for MALDI-TOF peptide mass fingerprint (PMF) and in the “LIFT” mode for MALDI-TOF-TOF in the fully manual mode, using Flex Control software v. 2.2 and processed using Flex Analysis v. 3.0 (Bruker Daltonics). The PMFs and MS/MS ion spectra generated were searched against the public database NCBI nr (National Center for Biotechnology Information non-redundant)/Viridiplantae, using the Mascot software v. 2.3 (Matrix Science) as previously described.<sup>6</sup> Identifications, available at PRIDE (<http://ebi.ac.uk/pride/>) with the experiment accession number 14817, were validated only when the MOWSE (Molecular Weight Search) score was significant, and both decoy score and false discovery rates were considered.

**Protein characterization.** A set of bioinformatics tools was used for enhanced characterization of identified proteins. The proteins were fit into COG (Clusters of Orthologous Groups) categories according to their functional inference, using the COGnitor program (<http://www.ncbi.nih.gov/COG>).<sup>15</sup> Software packages PSORT-B<sup>16</sup> and PSLpred<sup>17</sup> were used for prediction of subcellular localization.

## Results and Discussion

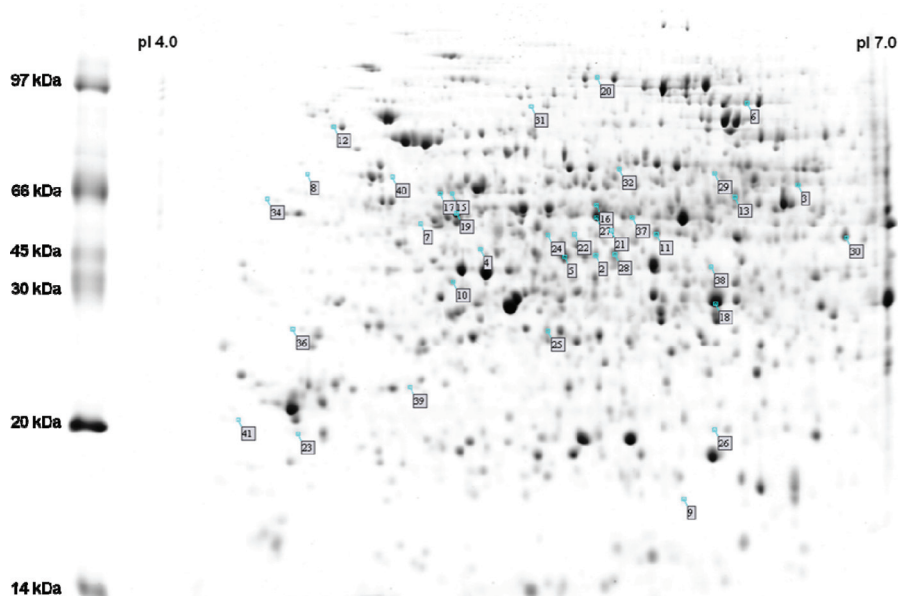
Thirty-seven differentially expressed spots were analyzed by MALDI-TOF/TOF-TOF, resulting in the identification of 37 proteins that are highlighted by their numbers in Figure 1 and listed in Supplementary Table S1.

Seventeen root proteins were up-regulated (increased expression) and twenty were down-regulated (decreased expression), when compared to the control, after inoculation of soybean Conquista with strain CPAC 15 (Fig. 2).

Proteins were distributed into 13 categories according to the functional classification in COG, belonging to four functional groups: information storage and processing (A, L), cellular processes and signaling (M, O, U, Z), metabolism function (C, E, F, G, H), and poorly characterized proteins. Ten proteins were classified as hypothetical/conserved hypothetical and another ten did not fit into any of the categories, being assigned as “not in COG” (Fig. 3).

The most representative category was the “metabolic function,” with 37% of the identified proteins, 43% of which were related to energy production and conversion. Proteins related to cellular processes and signaling comprised 21%, followed by the information storage and processing category with 11%.

Symbiotic nitrogen fixation is an energy-demanding process, and the supply of sucrose to the nodule may limit fixation. In addition, nodule organogenesis requires imported



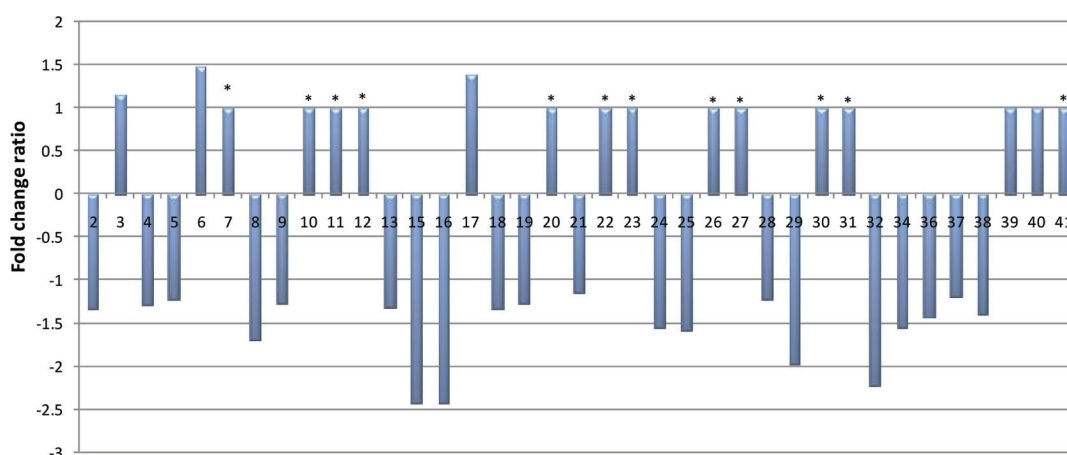
**Figure 1.** 2-D profile of soybean root extract indicating the differentially expressed proteins after inoculation with *Bradyrhizobium japonicum* strain CPAC 15. The molecular weight of protein standards is indicated on the left.

sucrose for cellulose biosynthesis.<sup>18</sup> The sucrose synthase (nodulin-100), up-regulated in our study, contributes significantly to the development of the cell wall, among other known functions in nodulation.<sup>19</sup> Its activity increases rapidly during nodule development and declines during senescence.<sup>18,20</sup> In addition, it is well known that several proteins are involved in plant-cell-wall penetration and cytoskeletal reorganization, given the need for structural modification of the root during the infection process by rhizobia.<sup>4,21</sup>

Rubisco activase was another up-regulated protein (Supplementary Table S1). This finding is interesting since this

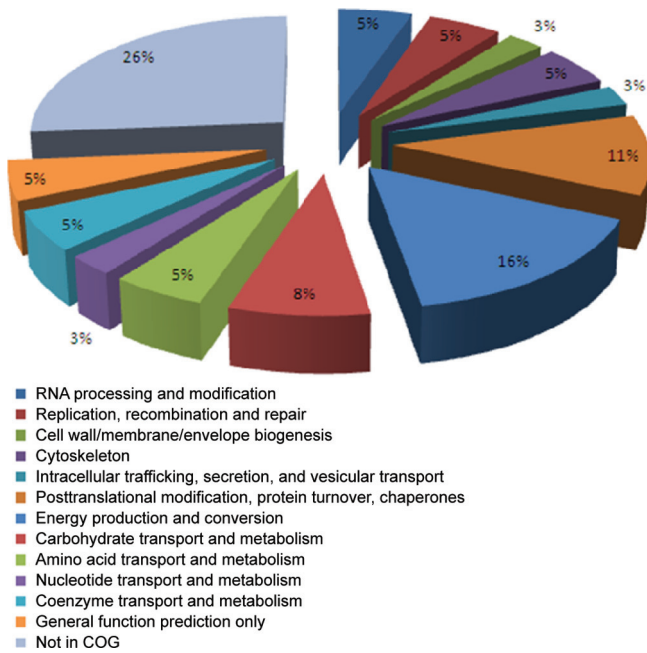
enzyme normally accumulates in greening or photosynthetic tissues expressing rubisco.<sup>22</sup> Nevertheless, rubisco activase is a member of a sequence superset of the AAA+ family, which are ATPases associated with diverse cellular activities<sup>23</sup> and include ATP-dependent proteases, membrane fusion, DNA processing, and microtubule severing and trafficking.<sup>24</sup> Some of the AAA+ proteins can also exhibit a classic chaperone activity in preventing the aggregation of denatured proteins and, in some cases, refolding them.<sup>24,25</sup>

We also identified proteins with potential antioxidant properties. Glutathione-S-transferase and pyridine



**Figure 2.** Fold change ratio of differentially expressed proteins of soybean roots, after inoculation with *Bradyrhizobium japonicum* strain CPAC 15. See Supplementary Table S1 for more details.

\*Proteins only identified in the experimental condition (soybean inoculated with *B. japonicum* CPAC 15). Gel analysis was performed in Image Master 2D Platinum v 5.0 software.



**Figure 3.** Distribution in COG categories of proteins of soybean roots after inoculation with *Bradyrhizobium japonicum* strain CPAC 15.

nucleotide-disulphideoxidoreductase were up-regulated in inoculated plants; in contrast, glutathione reductase and monodehydroascorbatereductase were down-regulated. Reactive oxygen species (ROS) are produced at high rates when plants are exposed to abiotic, biotic, or xenobiotic stress, and the main sources of ROS in plants, under physiological conditions, are respiration, photosynthesis, and  $N_2$  fixation.<sup>26</sup> In this context, high levels of antioxidants can increase the rates of nitrogen fixation by up to 4-fold in planta as well as in vitro reconstitution systems containing leghemoglobin and bacteroids.<sup>27,28</sup>

A putative heat-shock 70 kDa protein, identified in our study, was up-regulated in inoculated plants. The 70 kDa heat-shock proteins are a group of ubiquitous, highly conserved molecular chaperones that have been implicated in a variety of processes ranging from DNA replication to protein folding and transport.<sup>29</sup> Although 70 kDa heat-shock proteins were originally identified on the basis of their stress inducibility, it is now understood that constitutively expressed 70 kDa heat-shock proteins also perform critical roles in normal metabolism.<sup>30</sup>

Another down-regulated enzyme was the peroxisomal-betaine-aldehyde dehydrogenase (BADH). The most commonly studied aspect of BADH in plants is its role in tolerance of abiotic stresses, including salinity, drought, and high temperatures. Moreover, recent research has identified the potential for BADH as an antibiotic-free marker for selection of transgenic plants.<sup>31</sup>

A probable cysteine synthase—a primary enzyme of sulphur metabolism with significance to stress response—was down-regulated. Plant thiols are apparently involved in responses to almost all stress factors, and their accumulation, redox status, and

regulation are crucial to plant-stress tolerance. Minor changes in gene expression or redox state of thiols may define the difference between tolerant and susceptible genotypes or species.<sup>32</sup>

We also identified an up-regulated putative transposase. By the criterion of inheritance instability, transposable elements have been described in at least 35 mono- and dicotyledonous plant species.<sup>33</sup>

A transcriptomic study performed in conditions similar to those of our study—including the same cultivar and strain—resulted in 3,210 differentially expressed transcripts.<sup>4</sup> Two proteomic spots were used to validate the transcriptional data, represented by a putative glutathione-S-transferase and a sucrose synthase.<sup>4</sup> In accordance with this transcriptional study, our study demonstrated intense metabolic activity during the nodulation process. Amongst the major processes, we highlighted the metabolic pathways of primary metabolism, cell-wall modification, and antioxidant-defense systems. Barros de Carvalho et al<sup>4</sup> found various nodulins (nodulin-21, nodulin-22, nodulin-26 and nodulin-36), and we now report nodulin-100.

It is important to note that data arising from genome and transcriptome studies are not always fully exploitable, since some sequences do not correspond to an assigned function, and direct information is not available about translation or co- and post-translational events of deduced gene products.<sup>34</sup>

In our study, proteomics allowed the identification of some putative symbiotic functions and also confirmed the main biological processes triggered in the Brazilian soybean cultivar Conquista inoculated with *B. japonicum* strain CPAC 15, contributing to an understanding of critical events at the cellular level.

## Concluding Remarks

By using proteomic tools, we evaluated the protein-expression pattern in roots of Brazilian soybean cultivar Conquista inoculated with *B. japonicum* CPAC 15, a strain broadly used in commercial inoculants in Brazil. The analyses allowed the identification of some putative symbiotic functions and also confirmed main biological processes triggered in the development of the nitrogen-fixing symbiosis in soybean.

## Acknowledgements

The authors would like to thank Dr. L. Huergo, Dr. E.M. Souza and Dr. F.O. Pedrosa for their help in the protein analyses, and Dr. Allan R. J. Eaglesham for suggestions on the manuscript. Approved for publication by the Editorial Board of Embrapa Soja as manuscript 347/2013.

## Author Contributions

Conceived of and designed the experiments: EPR, JSSB and MH. Analyzed the data: ART, EPR, JSSB and DFG. Wrote the first draft of the manuscript: ART. Contributed to the writing of the manuscript: ART, EPR, JSSB, DFG, MH. Agreed with manuscript results and conclusions: ART,

EPR, JSSB, DFG, MH. Jointly developed the structure and arguments for the paper: ART, EPR, JSSB, DFG, MH. Made critical revisions and approved final version: MH. All authors reviewed and approved of the final manuscript. ART and EPR contributed equally to the manuscript.

#### DISCLOSURES AND ETHICS

As a requirement of publication the authors have provided signed confirmation of their compliance with ethical and legal obligations including but not limited to compliance with ICMJE authorship and competing interests guidelines, that the article is neither under consideration for publication nor published elsewhere, of their compliance with legal and ethical guidelines concerning human and animal research participants (if applicable), and that permission has been obtained for reproduction of any copyrighted material. This article was subject to blind, independent, expert peer review. The reviewers reported no competing interests.

#### Supplementary Data

**Supplementary table 1.** Proteins identified from roots of soybean cultivar Conquista at 10 days after inoculation with *Bradyrhizobium japonicum* strain CPAC 15.

#### REFERENCES

- Hungria M, Mendes IC. Nitrogen fixation with soybean: the perfect symbiosis? In: De Bruijn F, ed. *Biological Nitrogen Fixation*. Oxford, UK: Wiley-Blackwell; 2013.
- Stougaard J. Regulators and regulation of legumes root nodule development. *Plant Physiol*. 2000;124(2):531–540.
- Oldroyd GE, Murray JD, Poole PS, Downie JA. The rules of engagement in the legume-rhizobial symbiosis. *Annu Rev Genet*. 2011;45:119–144.
- Barros de Carvalho GAB, Batista JSS, Marcelino-Guimarães FC, Nascimento LC, Hungria M. Transcriptional analysis of genes involved in nodulation in soybean roots inoculated with *Bradyrhizobium japonicum* strain CPAC 15. *BMC Genomics*. 2013;14:153.
- Agrawal GK, Yonekura M, Iwahashi Y, Iwahashi H, Rakwal R. System, trends and perspectives of proteomics in dicot plants. Part III: Unraveling the proteomes influenced by the environment, and at the levels of function and genetic relationships. *J Chromatogr B Analyt Technol Biomed Life Sci*. 2005;815(1–2):137–145.
- Batista JS, Torres AR, Hungria M. Towards a two-dimensional proteomic reference map of *Bradyrhizobium japonicum* CPAC 15: spotlighting “hypothetical proteins”. *Proteomics*. 2010;10(17):3176–3189.
- da Silva Batista JS, Hungria M. Proteomics reveals differential expression of proteins related to a variety of metabolic pathways by genistein-induced *Bradyrhizobium japonicum* strains. *J Proteomics*. 2012;75(4):1211–1219.
- Hungria M, Campo RJ, Mendes IC, Graham PH. Contribution of biological nitrogen fixation to the N nutrition of grain crops in the tropics: the success of soybean (*Glycine max* L. Merr.) in South America. In: Singh RP, Shankar N, Jaiwal PK, eds. *Nitrogen Nutrition and Sustainable Plant Productivity*. Houston, US: Studium Press; 2006a:43–93.
- Hungria M, Franchini JC, Campo RJ, et al. Nitrogen nutrition of soybean in Brazil: contributions of biological N<sub>2</sub> fixation and N fertilizer to grain yield. *Can J Plant Sci*. 2006b;86(4):927–939.
- Vincent JM. *A Manual for the Practical Study of Root-Nodule Bacteria*. Oxford, UK: Blackwell; 1970. IBP Handbook; No. 15.
- Somasegaran P, Hoben HJ. *Methods in Legume-Rhizobium Technology Nif7AL*. Hawaii, US: 1985:367.
- Rodrigues EP, Torres AR, da Silva Batista JS, Huerzo L, Hungria M. A simple, economical and reproducible protein extraction protocol for proteomics studies of soybean roots. *Genet Mol Biol*. 2012;35(1 suppl):348–352.
- Bradford MM. A dye binding assay for protein. *Anal Biochem*. 1976;72:248–254.
- Chaves DF, de Souza EM, Monteiro RA, de Oliveira Pedrosa F. A two-dimensional electrophoretic profile of the proteins secreted by *Herbaspirillum seropedicae* strain Z78. *J Proteomics*. 2009;73(1):50–56.
- Tatusov RL, Galperin MY, Natale DA, Koonin EV. The COG database: a tool for genome-scale analysis of protein functions and evolution. *Nucleic Acids Res*. 2000;28(1):33–36.
- Gardy JL, Laird MR, Chen F, et al. PSORTb v.2.0: expanded prediction of bacterial protein subcellular localization and insights gained from comparative proteome analysis. *Bioinformatics*. 2005;21(5):617–623.
- Bhasin M, Garg A, Raghava GP. PSLpred: prediction of subcellular localization of bacterial proteins. *Bioinformatics*. 2005;21(10):2522–2524.
- Thummler F, Verma DP. Nodulin-100 of soybean is the subunit of sucrose synthase regulated by the availability of free heme in nodules. *J Biol Chem*. 1987;262(30):14730–14736.
- Koch K. Sucrose metabolism: regulatory mechanisms and pivotal roles in sugar sensing and plant development. *Curr Opin Plant Biol*. 2004;7(3):235–246.
- Kraus JP, Rosenberg LE. Purification of low-abundance messenger RNAs from rat liver by polysomeimmunoabsorption. *Proc Natl Acad Sci U S A*. 1982;79(13):4015–4019.
- Allen NS, Bennett MN. Electro-optical imaging of F-actin and endoplasmic reticulum in living and fixed plant cells. *Scanning Microsc Suppl*. 1996;10:177–186; discussion 186–187.
- Okubara PA, Pawlowski K, Murphy TM, Berry AM. Symbiotic root nodules of the actinorhizal plant *Datisca glomerata* express rubisco activase mRNA. *Plant Physiol*. 1999;120(2):411–420.
- Neuwald AF, Aravind L, Spouge JL, Koonin EV. AAA+: A class of chaperone-like ATPases associated with the assembly, operation, and disassembly of protein complexes. *Genome Res*. 1999;9(1):27–43.
- Portis AR. Rubisco activase—Rubisco’s catalytic chaperone. *Photosynth Res*. 2003;75(1):11–27.
- Ogura T, Wilkinson AJ. AAA+ superfamily ATPases: common structure—diverse function. *Genes Cells*. 2001;6(7):575–597.
- Matamoros MA, Dalton DA, Ramos J, Clemente MR, Rubio MC, Becana M. Biochemistry and molecular biology of antioxidants in the rhizobia-legume symbiosis. *Plant Physiol*. 2003;133:499–509.
- Bashor CJ, Dalton DA. Effects of exogenous application and stem infusion of ascorbate on soybean (*Glycine max*) root nodules. *New Phytol*. 1999;142:19–26.
- Ross EJ, Kramer SB, Dalton DA. Effectiveness of ascorbate and ascorbate peroxidase in promoting nitrogen fixation in model systems. *Phytochemistry*. 1999;52(7):1203–1210.
- Marshall JS, DeRocher AE, Keegstra K, Vierling E. Identification of heat shock protein hsp70 homologues in chloroplasts. *Proc Natl Acad Sci U S A*. 1990;87(1):374–378.
- Razavizadeh R, Ehsanpour AA, Ahsan N, Komatsu S. Proteome analysis of tobacco leaves under salt stress. *Peptides*. 2009;30(9):1651–1659.
- Fitzgerald TL, Waters DLE, Henry RJ. Betaine aldehyde dehydrogenase in plants. *Plant Biol*. 2009;11:119–130.
- Zagorchev L, Seal CE, Kranner I, Odjakova M. A central role for thiols in plant tolerance to abiotic stress. *Int J Mol Sci*. 2013;14(4):7405–7432.
- Nevers P, Shepherd NA, Saedler H. Plant transposable elements. *Adv Bot Res*. 1986;12:102–203.
- Bestel-Corre G, Dumas-Gaudot E, Poinot V, et al. Proteome analysis and identification of symbiosis-related proteins from *Medicago truncatula* Gaertn. by two-dimensional electrophoresis and mass spectrometry. *Electrophoresis*. 2002;23(1):122–137.