

RESEARCH ARTICLE

# The role of treatment timing and mode of stimulation in the treatment of primary dysmenorrhea with acupuncture: An exploratory randomised controlled trial

Mike Armour<sup>1\*</sup>, Hannah G. Dahlen<sup>2</sup>, Xiaoshu Zhu<sup>1</sup>, Cindy Farquhar<sup>3</sup>, Caroline A. Smith<sup>1</sup>

**1** The National Institute of Complementary Medicine, Western Sydney University, Sydney, Australia, **2** School of Nursing and Midwifery, Western Sydney University, Sydney, Australia, **3** Department of Obstetrics and Gynaecology, University of Auckland, Auckland, New Zealand

\* [m.armour@westernsydney.edu.au](mailto:m.armour@westernsydney.edu.au)



## Abstract

### Objectives

We examined the effect of changing treatment timing and the use of manual, electro acupuncture on the symptoms of primary dysmenorrhea.

### Methods

A randomised controlled trial was performed with four arms, low frequency manual acupuncture (LF-MA), high frequency manual acupuncture (HF-MA), low frequency electro acupuncture (LF-EA) and high frequency electro acupuncture (HF-EA). A manualised trial protocol was used to allow differentiation and individualized treatment over three months. A total of 74 women were randomly assigned to one of the four groups (LF-MA n = 19, HF-MA n = 18, LF-EA n = 18, HF-EA n = 19). Twelve treatments were performed over three menstrual cycles, either once per week (LF groups) or three times in the week prior to menses (HF groups). All groups received a treatment in the first 48 hours of menses. The primary outcome was the reduction in peak menstrual pain at 12 months from trial entry.

### Results

During the treatment period and nine month follow-up all groups showed statistically significant ( $p < .001$ ) reductions in peak and average menstrual pain compared to baseline but there were no differences between groups ( $p > 0.05$ ). Health related quality of life increased significantly in six domains in groups having high frequency of treatment compared to two domains in low frequency groups. Manual acupuncture groups required less analgesic medication than electro-acupuncture groups ( $p = 0.02$ ). HF-MA was most effective in reducing secondary menstrual symptoms compared to both-EA groups ( $p < 0.05$ ).

## OPEN ACCESS

**Citation:** Armour M, Dahlen HG, Zhu X, Farquhar C, Smith CA (2017) The role of treatment timing and mode of stimulation in the treatment of primary dysmenorrhea with acupuncture: An exploratory randomised controlled trial. PLoS ONE 12(7): e0180177. <https://doi.org/10.1371/journal.pone.0180177>

**Editor:** Roberta W. Scherer, Johns Hopkins University Bloomberg School of Public Health, UNITED STATES

**Received:** September 22, 2016

**Accepted:** May 18, 2017

**Published:** July 12, 2017

**Copyright:** © 2017 Armour et al. This is an open access article distributed under the terms of the [Creative Commons Attribution License](https://creativecommons.org/licenses/by/4.0/), which permits unrestricted use, distribution, and reproduction in any medium, provided the original author and source are credited.

**Data Availability Statement:** All relevant data are within the paper and its Supporting Information files.

**Funding:** This study was funded in part by the Australian federal government via their Australian postgraduate award to MA. The funders had no role in study design, data collection and analysis, decision to publish, or preparation of the manuscript.

**Competing interests:** MA is the director of an acupuncture clinic in New Zealand and has recently been engaged in integrative medicine clinical practice. MA, CS and XZ are part of NICM. As a medical research institute, NICM receives research grants and donations from foundations, universities, government agencies, individuals and industry. Sponsors and donors provide untied funding for work to advance the vision and mission of the Institute. The project that is the subject of this article was not undertaken as part of a contractual relationship with any organisation other than the funding declared in the Acknowledgments. It should also be noted that NICM conducts clinical trials relevant to this topic area, for which further details can be provided on request. This does not alter our adherence to PLOS ONE policies on sharing data and materials.

## Conclusion

Acupuncture treatment reduced menstrual pain intensity and duration after three months of treatment and this was sustained for up to one year after trial entry. The effect of changing mode of stimulation or frequency of treatment on menstrual pain was not significant. This may be due to a lack of power. The role of acupuncture stimulation on menstrual pain needs to be investigated in appropriately powered randomised controlled trials.

## Introduction

Primary dysmenorrhea is defined as menstrual pain in the absence of any organic cause and is most common in women under the age of 25. Primary dysmenorrhea's characteristic symptom is crampy, colicky spasms of pain in the suprapubic area, occurring within 8–72 hours of menstruation and peaking within the first few days as menstrual flow increases[1]. In addition to painful cramps, many women with primary dysmenorrhea experience other menstrual-related symptoms, including back and thigh pain, headaches, diarrhoea, nausea and vomiting[1]. Pain commonly starts within three years of menarche[2] and results in life time world-wide prevalence rates ranging from 17–81%[3] with 71% of Australian women suffering from dysmenorrhea in a given year[4]. Primary dysmenorrhea is the most common cause for school absenteeism in women [5] and in 10–30% of women causes regular absence from work, school or university each month [6, 7]. In addition to absenteeism primary dysmenorrhea causes a reduction in academic performance [8, 9], reduced participation in sport and social activities[8] and an overall significant decrease in women's quality of life [9, 10]. Despite the significant negative impact and disruption to daily living that primary dysmenorrhea has on women most do not seek medical treatment [11, 12]. When women do present to their doctor with primary dysmenorrhea, the most commonly prescribed treatments are non-steroidal anti-inflammatories (NSAIDs) and the combined oral contraceptive (COC) pill. These treatments are effective for many women [2, 13], however approximately 25% of women have pain that is refractory to either or both of these standard treatments[14].

Lack of satisfaction in standard treatment leads to an increase in self-care [15, 16], with women commonly using complementary therapies to deal with their menstrual pain[17] in addition to, or instead of, pharmaceutical pain relief, due to a lack of perceived effectiveness [15, 18, 19] or a dislike of using analgesic medication[20]. Surveys of practice show women are presenting to acupuncturists in the community with gynaecological complaints such as primary dysmenorrhea [21] despite the evidence for acupuncture's effectiveness in treating primary dysmenorrhea being uncertain[22]. Many clinical trials are characterised as having a high risk of bias or a lack of clinical validity due to a significant departure from how acupuncture is delivered in contemporary clinical practice.

Despite the lack of high quality evidence there are plausible mechanisms of action for acupuncture to improve primary dysmenorrhea, including endogenous opioid release[23], reduction of inflammation [24], alterations in uterine blood flow[25] and changes in prostaglandin levels [26]. Acupuncture appears to show a dose response relationship between various needling parameters and pain [27]. There is some evidence that electro-acupuncture provides a more rapid reduction in menstrual pain compared to manual acupuncture; however this finding was based on a single study that used an uncommon style of indwelling acupuncture administered only during menses and assessed using non-validated outcome measures [28]. The timing of treatment around menses has been examined in two studies [29, 30] which

suggested that treatment three to seven days prior to menses was more effective than treatment during menses. No previous trials have directly investigated the possible dose response relationship that appears to be present between the use of electro-acupuncture and manual acupuncture or in changing frequency of treatment in a western clinical setting where use of manual acupuncture delivered once per week is more common.

This exploratory study aims to examine the possible impact of changing the mode of acupuncture stimulation and treatment timing on menstrual pain. We hypothesised that both electro-acupuncture and higher frequency of treatment would deliver greater reductions in menstrual pain and greater improvements in health-related quality of life compared to lower frequency or manual acupuncture.

## Materials and methods

### Study design

An exploratory study using a 2x2 factorial design, to test the individual and combined effects of changing 1) treatment timing, and 2) mode of stimulation. This study used a pragmatic clinical trial design with some qualifications, including the use of a manualised acupuncture protocol designed to reduce the amount of variation between practitioners (S1 File). This design allows for a balance between removing excessive inter-practitioner variation and still encompassing the complex nature of traditional Chinese medicine (TCM) clinical practice [31]. When evaluating a complex intervention or “package of care,” such as TCM acupuncture, a design slanted towards the pragmatic effectiveness end of the continuum is more appropriate and increases the ecological validity of the outcome [32]. Acupuncture-specific reporting in this trial follows the revised Standards for Reporting Interventions in Clinical Trials of Acupuncture [33].

The University of Western Sydney Human Ethics Committee (H10082) and the Health and Disability Ethics Committee New Zealand (13/CEN/60) approved this study. Maori approval was obtained from the Office of Tumuaki along with locality assessments for the clinic sites in Auckland and Wellington through the Health and Disability Ethics Committee New Zealand. Written consent was obtained from all participants before trial entry. The trial was prospectively registered with the Australian New Zealand Clinical Trials Registry (<https://www.anzctr.org.au/Trial/Registration/TrialReview.aspx?id=363933>) ACTRN12613000351718. Recruitment ran from June 2013 to January 2014.

### Participants

Eligible participants were aged 18–45 years, with suspected or confirmed primary dysmenorrhea as defined by the following: a history of period pain beginning before the age of 18, or period pain beginning after the age of 18, but gynaecological investigations by laparoscopy or ultrasound scan showing no evidence of secondary dysmenorrhea, pain greater than or equal to 3 out of 10 on a numeric rating scale during the first three days of menses for at least two of the past three menstrual cycles, regular menstrual cycles (28 +/- 5 days) for the last three months, spoken and written English skills and able to give informed consent.

Exclusion criteria included a previous diagnosis of endometriosis or secondary dysmenorrhea, abdominal surgery in the previous three months, injectable or implant contraceptives (Depo Provera, Jadelle, Mirena) within the last three months, oral contraceptive usage started less than three months prior to enrolment, chronic pain conditions (>14 days per month with pain), current untreated mental health illness, neuropathic pain secondary to surgery, sterilisation.

## Recruitment

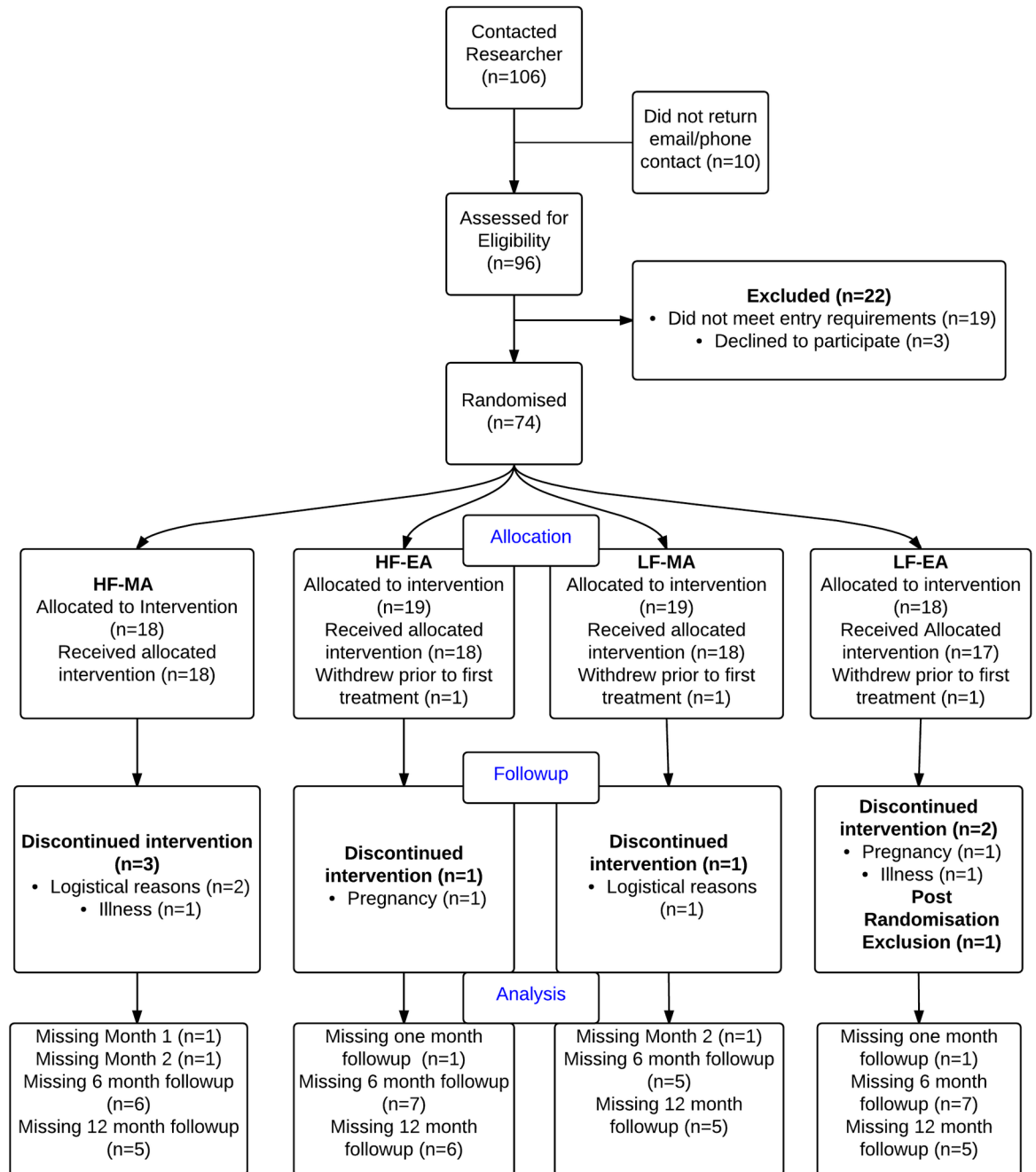
Based on prevalence data we expected the majority of potential participants to be aged under 25 [6]. Most of these women would not have discussed their condition with their general practitioner [10, 34] therefore we used similar promotion and recruitment strategies to Griffin [35] with promotion of the study focussed on distributing study information using university email lists, flyers and posters placed on campus. In addition, a Facebook advertisement and Google Ad-words were created in conjunction with the University of Western Sydney (UWS) social media committee. Both of these linked the participant with the UWS study website which provided more information and the contact details of the researcher. Facebook advertisements were targeted to women, aged 18–45 years living within 60 miles of Auckland and Wellington, New Zealand. Sixty miles was chosen as a suitable radius as it was considered unlikely that women outside this distance would be happy to travel in for treatment if randomised to either of the high-frequency groups. Upon contacting the primary investigator, women were assessed for initial eligibility. Women were then instructed to fill in a menstrual pain diary during their next menstrual period and this was assessed to confirm the presence of cycle length, pain levels and pain characteristics indicative of primary dysmenorrhea. Menstrual pain diary and baseline data were assessed to confirm eligibility before randomisation occurred. Fig 1 outlines the participant flow in the trial.

Randomisation was computer generated and allocation was concealed by way of an internet-based randomisation service, Sealed Envelope ([www.sealedenvelope.com](http://www.sealedenvelope.com)). Randomisation into one of four study groups using a 1:1:1:1 ratio was undertaken using the web interface by the primary investigator (MA). The four groups were, high frequency, manual acupuncture (HF-MA), high frequency, electro acupuncture (HF-EA), low frequency, manual acupuncture (LF-MA), low frequency, electro acupuncture (LF-EA).

## Treatment protocol

All women in the study were scheduled to receive 12 treatments over the course of three menstrual cycles. Women in the high frequency (HF) group received three treatments in the seven days prior to the estimated day one of the menstrual cycle. Women in the low frequency (LF) group received three treatments in the time between menses, approximately every seven to ten days' dependent on cycle length. All groups received a treatment in the first two days of menses (day one or day two of the menses). In the manual acupuncture groups (-MA) all needles were stimulated by hand using tonifying, reducing or even method, based on the practitioner's clinical judgement approximately 10–15 minutes after needle insertion was completed. In the electro-acupuncture groups (-EA) Two distal points (from the previously chosen point prescription) were selected by the practitioner and a 2Hz / 100Hz square wave pulse of 200ms duration was applied between each point for 20 minutes using an ITO ES-160 electro-acupuncture machine (Ito Co. Ltd, Japan). Intensity level was based on patient feedback; noticeable sensation present, but below the threshold for discomfort. All initial consultations were allocated 60 minutes, with follow-up consultations of 45 minutes' duration.

The manualised protocol was based on data collected from an international survey of experienced women's health practitioners [21] and focus groups [12]. Treatment was based on TCM's eight principles and Zang Fu diagnosis. Once a TCM diagnosis had been ascertained, the practitioners had the flexibility with their point selection to address the diagnosed pattern of disharmony as per the treatment handbook. Each subsequent treatment session would allow for a confirmation or update on the TCM diagnosis and therefore point selection could vary from treatment to treatment. Multiple patterns of disharmony are common in dysmenorrhea[36] and this trial supported up to two concurrent patterns of disharmony, designated as



**Fig 1. CONSORT flow diagram.**

<https://doi.org/10.1371/journal.pone.0180177.g001>

root (primary) and secondary (branch) patterns. In all cases no more than seven acupuncture points were to be used. [S1 Fig](#) outlines how point selection occurred in both patients with one or two TCM patterns. Acupuncture points were needed bilaterally, except those where only one side was used clinically, such as opening extraordinary vessels such as the Chong Mai. Point location and needling depth was as specified in *A Manual of Acupuncture* [37]. Single use, stainless steel needles of varying gauge (.20 x 30mm or .25 x 40mm, DongBang, Korea) were used. *DeQi* (the arrival of Qi) is the sensation generated by the insertion and/or

manipulation of an acupuncture needle in an acupuncture point [38]. In all groups DeQi was obtained for each acupuncture point at the beginning of the session and needles were retained for 20–30 minutes. Each pattern also has moxibustion as a compulsory, optional or forbidden component of the treatment. Indirect moxa was administered via smokeless moxa stick for 5–10 minutes on one of the selected acupuncture points. Each patient was given a diet and life-style advice sheet during their first treatment session. These were grounded in TCM theory.

## Blinding

Participants were not blinded to group allocation. Data entry was undertaken blind to the study group, and analysis was undertaken blind to group allocation.

## Outcomes

Changes in menstrual pain and other secondary symptoms were measured using a menstrual pain diary (MPD) that was designed by the authors (See [S2 File](#)). This was used to assess the changes in pain, analgesic intake, menstrual characteristics and secondary symptoms, and allowed women to self-rate the severity of their dysmenorrhea in both intensity and duration of pain, as well as the presence of secondary symptoms. The primary data endpoint used an 11-point numerical rating scale (NRS) for both “peak” and “average” pain each day, with 0 being no pain and 10 being the worst pain imaginable. The NRS has a high compliance rate, is easy to use, preferred by chronic pain patients and fits the compact format of a menstrual diary [39]. The diary also collected information on duration of menstrual pain each day (hours or “all day”), secondary menstrual symptoms, including breast tenderness, emotional changes, nausea etc. and analgesic usage (brand / pharmaceutical name, dosage and number of doses per day) This MPD could be filled in either in hard copy or using a webform. Both were identical in content and layout. The diary was completed by the participant at the conclusion of the day during either the menstrual period itself or one to two days prior to the menstrual period if they were experiencing sharp, stabbing, cramping or aching pain in the lower abdomen or lower back that they would normally associate with their period. The MPD was administered at baseline, at each of the three menstrual periods during the study, the menstrual period following the completion of the study, and at one, six and 12 months after the conclusion of the study.

Health related quality of life (HRQoL) was measured using the 36-Item Short Form Health Survey (SF-36v2). The SF-36 has been shown to be valid and reliable [40], and has previously shown suitability for use in dysmenorrhea [41]. The SF-36v2 was self-administered at baseline (prior to the first acupuncture session) and again at one-month follow-up (post-trial completion).

An exit questionnaire was also used to determine self-reported improvement score, treatment satisfaction and to record which, if any, symptoms of primary dysmenorrhea improved (See [S3 File](#)).

The decision to calculate a responder rate was made *a posteriori*. The responder rate provides clinically meaningful information on the magnitude of pain reduction, in addition to the continuous outcome data. Responder rates were calculated for the primary outcome measures between baseline and one-month follow up, due to the significant loss to follow-up at 6 and 12 months. A recent review of chronic pain has shown that the threshold of a 30% reduction in pain scores is where patients feel a clinically important change has occurred [42]. However, the choice of responder rate can appear arbitrary and possibly bias the results, therefore providing a range of responder rates allows a more transparent view of the data [43]. Numeric data for responder rates is provided for 30%, 50% and 70% reductions from baseline.

## Sample size

This trial was designed to explore a difference in peak pain intensity on the first 3 days of the menstrual period between groups as measured by the Numeric Rating Scale (NRS). A minimal clinically important 20% difference between groups was expected and based on previous study data [44], a standard deviation of 1.3 units on a pain scale was used. An alpha of 0.05 and power of 90% gives a total sample size of 60 women. A power calculation was performed using G\*Power 3 (G\*Power: Statistical Power Analyses for Windows and Mac, Universität Düsseldorf). Previous studies [44, 45] had relatively low loss to follow-up (<15%), therefore a sample size of 72 women (18 per group) was used to account for the predicted loss to follow-up of 10–15%.

## Analysis

Data analysis used descriptive statistics and inferential statistics to examine the demographic and baseline characteristics. All statistical calculations were performed using IBM SPSS Statistics v23 (IBM Corporation). Age, BMI, age of menarche, analgesic usage, expectation, smoking and alcohol status, peak pain on the first three days of the menstrual period, average pain and SF-36 scores were compared between groups at baseline using one-way ANOVA for continuous data or chi-square for categorical data to ensure randomisation was successful. Differences at baseline are reported as means and standard deviations or frequencies and percentages. Both an 'intention to treat' approach and a per protocol analysis were undertaken for the primary and secondary endpoints. The menstrual symptoms score was calculated as the mean number of symptoms per participant per day. Average pain for each menstrual cycle was calculated as the mean of each day's 'average pain' score over each menstrual period. Pre-planned contrasts were to compare mode of stimulation (MA vs EA) and frequency of treatment (HF vs LF) and the effect of these combinations via the four different groups. Differences in the primary and secondary outcome measures were analysed using linear mixed model analysis of variance with either i) group and time as fixed effects or ii) mode of stimulation, frequency of treatment and time as fixed effects. In all linear mixed models subject was used as a random effect. Any interactions between group and time, mode of stimulation and time and frequency of treatment and time were investigated. Due to the small sample size all p-values are exploratory. All pre-planned *post hoc* tests used Sidak for multiple pairwise comparisons. In the secondary analysis where means have been adjusted by SF-36 Role Physical, expectation of benefit and current alcohol consumption, all relevant tables report both adjusted and unadjusted means.

## Results

A total of 106 women expressed interest in the study (See Fig 1). Seventy-four women met the eligibility criteria and were randomised to one of the four groups. Sixty-three (85%) women completed the treatment phase of the trial. Ten participants withdrew during the treatment phase of the trial. Withdrawal from the trial was equally distributed across groups, with none of the women citing any group-related concerns as reason for withdrawal.

The demographic and menstrual characteristics of the women at baseline are shown in Table 1. One-way ANOVA and Pearson Chi-square showed three areas of imbalance between the groups at baseline, in SF-36 role physical ( $F(3,69) = 1.12, p = 0.008$ ), in expectation of benefit ( $\chi(6) = 13.205, p = 0.04$ ) and in current alcohol consumption ( $\chi(3) = 8.562, p = 0.036$ ). These were used as co-variates in the secondary analysis.

However, not all women received all 12 treatments, mostly due to logistical issues around timing of treatments with regards to the start of menses. Twenty-five participants (35.2%)

Table 1. Baseline demographic and health characteristics of women at trial entry.

	HF-MA (n = 18)	HF-EA (n = 19)	LF-MA (n = 19)	LF-EA (n = 18)	Total (N = 74)	p-value
	mean (SD)	mean (SD)	mean (SD)	mean (SD)	mean (SD)	
<i>Demographic</i>						
<b>Age</b>	29.9 (7.2)	31.2 (7.4)	31.1 (6.6)	29.3 (5.6)	30.4 (6.7)	0.80
<b>BMI (n %)*</b>						
Underweight	0 (0.0)	2 (10.5)	1 (5.2)	0 (0.0)	3 (4.0)	
Normal	9 (50.0)	8 (42.1)	13 (68.4)	11 (61.1)	41 (55.4)	0.50
Overweight	4 (22.2)	6 (31.5)	4 (21.0)	4 (22.2)	18 (24.3)	
Obese	5 (27.7)	3 (15.7)	1 (5.2)	3 (16.6)	12 (16.2)	
<b>Previously given birth</b>						
No	14 (77.7)	16 (84.2)	13 (68.4)	15 (83.3)	58 (78.4)	0.62
Yes	4 (22.2)	3 (15.7)	6 (31.6)	3 (16.6)	16 (21.6)	
<i>Menstrual characteristics</i>						
<b>Age of Menarche (years)</b>	12.5 (1.7)	12.7 (1.4)	13.2 (1.6)	12.3 (0.9)	12.7 (1.5)	0.31
<b>Age of onset of dysmenorrhea (years)</b>	15.8 (6.8)	13.7 (1.5)	15.9 (5.8)	13.3 (1.5)	14.7 (4.7)	0.19
<b>Length of menstrual cycle (days)</b>	28.1 (1.8)	28.7 (2.1)	27.8 (2.0)	28.6 (2.1)	28.3 (2.0)	0.50
<b>Length of menses (days)</b>	5.3 (1.9)	4.9 (0.8)	5.4 (1.2)	5.6 (1.7)	5.3 (1.2)	0.49
<b>Additional Menstrual Symptoms</b>						
No	0 (0)	0 (0)	0 (0)	0 (0)	0 (0)	
Yes	18 (100)	19 (100)	19 (100)	18 (100)	74 (100)	1.0
<b>Pain relief with analgesia</b>						
No—Pain still present	2 (11.1)	2 (10.5)	0 (0.0)	0 (0.0)	4 (5.4)	
Yes—Partial Relief	13 (72.2)	16 (84.2)	15 (78.9)	17 (94.4)	61 (82.4)	0.37
Yes—Complete relief	3 (16.6)	1 (5.2)	3 (15.7)	1 (5.6)	8 (10.8)	
<b>Currently drinking alcohol</b>						
No	2 (11.1)	3(15.7)	9(47.3)	3(16.6)	17 (22.9)	0.03*
Yes	16 (88.9)	16(84.2)	10 (52.6)	15(83.3)	57 (77.0)	
<b>Expectation of benefit from acupuncture</b>						
Unsure	9 (50.0)	4 (21.0)	10 (52.6)	7 (38.8)	30 (40.5)	
Probably will help	4 (22.2)	14 (73.6)	8 (42.1)	8 (44.4)	34 (46.0)	0.040*
Definitely will help	5 (27.8)	1 (5.2)	1 (5.2)	3 (16.6)	10 (13.5)	
<b>SF-36 HRQoL</b>						
Physical function	55.8 (2.9)	55.0 (3.9)	52.8 (8.4)	53.7 (7.4)	54.3 (6.1)	0.46
Role physical	54.8 (5.0)	46.4 (9.7)	50.2 (7.8)	47.6 (8.0)	49.7 (8.4)	0.01 *
Bodily pain	49.1 (7.4)	43.6 (5.3)	44.8 (9.3)	43.4 (7.4)	44.9 (7.7)	0.08
General health	51.3 (10.6)	50.4 (10.4)	52.8 (9.9)	51.6 (7.7)	51.5 (9.6)	0.90
Vitality	48.1 (9.8)	45.4 (7.8)	48.2 (9.9)	48.9 (6.5)	47.7 (8.6)	0.61
Social function	50.7 (8.2)	43.9 (11.3)	44.9 (10.7)	47.6 (7.0)	46.7 (9.7)	0.15
Role emotional	49.6 (6.6)	47.6 (8.9)	47.6 (8.9)	49.0 (8.0)	48.4 (8.1)	0.83
Mental health	51.0 (6.3)	50.3 (5.8)	47.3 (8.1)	49.6 (7.2)	49.5 (6.9)	0.38
Overall mental component	48.1 (8.1)	44.8 (10.0)	46.1 (9.4)	47.9 (8.7)	46.7 (9.0)	0.68
Overall physical component	54.1 (6.6)	49.4 (6.7)	51.4 (6.3)	49.3 (6.9)	51.0 (6.8)	0.13

Continuous data presented as mean (SD). Categorical data as N (%).

\* between group comparison significant (P<0.05)

<https://doi.org/10.1371/journal.pone.0180177.t001>

received the full 12 study treatments. The mean number of treatments was 10.6 [95% CI 10.22 to 10.99] for all women who had at least one study treatment. There was no difference in the number of treatments given between groups ( $F(3,59) = 1.855, p = 0.147$ ).



[Table 2](#) outlines peak pain, average pain, duration of pain and analgesic usage for each of the groups at each time point for adjusted and unadjusted ITT analysis. See [S4 File](#) for results of the per-protocol analysis.

## Primary outcome

**Abdominal pain.** For the primary outcome of peak pain during the first three days of menses at the 12 month follow-up, all groups showed a significant reduction in peak abdominal pain over time, ( $F(6, 1519) = 12.3, p < .0001$ ) and neither mode of stimulation (MA vs EA) ( $p = 0.48$ ) nor frequency of treatment (LF vs HF) ( $p = 0.362$ ) showed a significant effect. There was no significant difference between groups ( $p = 0.597$ ) or any group\*time interaction ( $p = 0.506$ ). A secondary analysis which included baseline co-variates as fixed effects did not significantly alter any of the outcomes.

## Secondary outcomes

**Abdominal pain.** For the secondary outcome of average abdominal pain over the menstrual period all groups showed reductions in average abdominal pain over time ( $F(6, 2324) = 7.98, p < .0001$ ) and neither mode of stimulation (MA vs EA) ( $p = 0.61$ ) nor frequency of treatment (LF vs HF) ( $p = 0.74$ ) showed a significant effect. There was no difference between the four groups ( $p = 0.846$ ) or any group\*time interaction ( $p = 0.105$ ). A secondary analysis with baseline covariates did not significantly alter any of the outcomes.

**Duration of menstrual pain.** For the duration of menstrual pain each day all groups showed reductions in the duration of menstrual pain over time, ( $F(6, 2317) = 12.721, p < .0001$ ) and neither mode of stimulation (MA vs EA) ( $p = 0.61$ ) nor frequency of treatment (LF vs HF) ( $p = 0.74$ ) showed a significant effect. There was no significant difference between groups ( $p = 0.247$ ) or any group\*time interaction ( $p = 0.287$ ). A secondary analysis with baseline covariates did show a difference between groups ( $F(3, 2313) = 3.151, p = 0.024$ ). A post-hoc pairwise analysis showed that the HF-MA group had significantly shorter duration of pain at baseline compared to HF-EA (MD -4.4, 95%CI -7.9 to -1.50,  $p = 0.003$ ) and LF-MA (MD -3.9, 95%CI -6.9 to 1.0,  $p = 0.008$ ), at month 1 compared to HF-EA (MD -4.4, 95%CI -7.3 to -1.4,  $p = 0.004$ ), LF-MA (MD -4.4, 95%CI -7.4 to -1.5,  $p = 0.003$ ), and LF-EA (MD -3.7, 95%CI -6.6 to -0.8,  $p = 0.01$ ) and at month 2 compared to HF-EA (MD -5.1, 95%CI -8.1 to -2.2,  $p = 0.001$ ). This difference was no longer significant from month 3 onwards.

**Analgesic medication.** Medication usage was the mean number of doses per day of menses of analgesic medication. Analgesic medication usage reduced in all groups over time, ( $F(6, 1519) = 3.4, p = 0.002$ ) and mode of stimulation (MA vs EA) showed a significant effect, ( $F(1, 2343) = 5.3, p = 0.02$ ) while frequency of treatment (LF vs HF) did not ( $p = 0.338$ ). Post-hoc pairwise analysis showed the manual acupuncture groups had lower analgesic intake at month 1 (MD -0.230, 95% CI -0.437 to -0.023,  $p = 0.03$ ) and 1 month follow-up (MD -0.234, 95% CI MD -0.441 to -0.027,  $p = 0.027$ ), 6 month follow-up (MD -0.228, 95% CI MD -0.40 to -0.051,  $p = 0.012$ ) and 12 month follow-up (MD -0.182, 95% CI MD -0.361 to -0.004,  $p = 0.045$ ). There was no significant difference between groups ( $p = 0.151$ ) or any group\*time interaction ( $p = 0.921$ ). Secondary analysis which included baseline co-variates as fixed effects did not significantly alter any of the outcomes.

**Secondary symptoms.** There was a decrease in menstrual symptoms over time ( $F(6, 2313) = 8.4, p < 0.001$ ) which was different between groups ( $F(18, 2313) = 2.49, p < 0.001$ ), see [Fig 2](#). Mode of stimulation (MA vs EA) showed a significant difference in the number of menstrual symptoms at different time points, ( $F(1, 2320) = 4.2, p < 0.001$ ) while frequency of treatment (LF vs HF) did not ( $p = 0.858$ ). *Post-hoc* pairwise analysis showed that the LF-EA group

**Table 2. Changes in menstrual pain and analgesic usage between baseline and follow up.**

Group	HF-MA n = 18		HF-EA n = 19		LF-MA n = 19		LF-EA n = 18	
	Unadjusted Mean [95% CI]	Adjusted Mean [95% CI]	Unadjusted Mean [95% CI]	Adjusted Mean [95% CI]	Unadjusted Mean [95% CI]	Adjusted Mean [95% CI]	Unadjusted Mean [95% CI]	Adjusted Mean [95% CI]
<b>Peak pain (Day 1–3 of menstrual period)</b>								
Baseline	4.5 [3.5 to 5.4]	4.4 [3.4 to 5.5]	5.1 [4.2 to 6.0]	5.7 [4.7 to 6.8]	5.3 [4.4 to 6.2]	5.5 [4.5 to 6.5]	4.7 [3.7 to 5.7]	5.0 [3.9 to 6.0]
Month 1	3.4 [2.5 to 4.4]	3.4 [2.4 to 4.4]	4.0 [3.1 to 5.0]	4.6 [3.6 to 5.7]	4.7 [3.8 to 5.7]	4.9 [4.0 to 5.9]	3.8 [2.8 to 4.8]	4.0 [3.0 to 5.0]
Month 2	3.7 [2.8 to 4.6]	3.7 [2.6 to 4.7]	4.0 [3.0 to 4.9]	4.6 [3.5 to 5.6]	4.1 [3.2 to 5.1]	4.3 [3.3 to 5.3]	3.9 [2.9 to 4.9]	4.1 [3.1 to 5.2]
Month 3	3.4 [2.5 to 4.4]	3.4 [2.3 to 4.5]	3.3 [2.3 to 4.2]	3.9 [	3.0 [2.1 to 4.0]	3.2 [2.2 to 4.2]	3.8 [2.8 to 4.8]	4.1 [3.0 to 5.1]
1 month follow up	2.7 [1.8 to 3.6]	2.7 [1.6 to 3.8]	3.7 [2.8 to 4.7]	4.3 [3.2 to 5.4]	3.4 [2.5 to 4.4]	3.7 [2.7 to 4.6]	3.7 [2.8 to 4.8]	4.0 [2.9 to 5.0]
6 month follow up	2.8 [1.9 to 3.8]	2.8 [1.8 to 3.9]	3.6 [2.6 to 4.5]	4.2 [3.1 to 5.2]	3.5 [2.5 to 4.5]	3.7 [2.7 to 4.7]	3.7 [2.8 to 4.7]	4.0 [2.9 to 5.0]
12 month follow up	2.9 [1.9 to 3.9]	2.9 [1.8 to 4.0]	3.6 [2.6 to 4.5]	4.2 [3.1 to 5.2]	3.8 [2.8 to 4.7]	4.0 [3.0 to 4.9]	4.0 [3.0 to 4.9]	4.2 [3.2 to 5.3]
<b>Average Pain</b>								
Baseline	2.4 [1.7 to 3.1]	2.6 [1.8 to 3.3]	2.7 [2.1 to 3.4]	3.3 [2.6 to 4.1]	3.2 [2.5 to 3.9]	3.5 [2.8 to 4.2]	2.6 [1.9 to 3.3]	2.9 [2.2 to 3.6]
Month 1	2.2 [1.5 to 2.9]	2.3 [1.6 to 3.1]	2.6 [1.9 to 3.3]	3.3 [2.5 to 4.0]	2.7 [2.1 to 3.4]	3.0 [2.4 to 3.7]	2.4 [1.7 to 3.1]	2.7 [2.0 to 3.4]
Month 2	2.5 [1.8 to 3.3]	2.7 [2.0 to 3.5]	2.4 [1.7 to 3.1]	3.0 [2.3 to 3.8]	2.5 [1.8 to 3.1]	2.8 [2.1 to 3.5]	2.2 [1.5 to 2.9]	2.5 [1.8 to 3.2]
Month 3	2.1 [1.4 to 2.8]	2.3 [1.5 to 3.0]	2.0 [1.4 to 2.8]	2.7 [1.9 to 3.4]	1.7 [1.0 to 2.4]	2.0 [1.7 to 3.1]	2.2 [1.5 to 3.0]	2.5 [1.8 to 3.2]
1 month follow up	1.6 [1.0 to 2.3]	1.8 [1.0 to 2.6]	2.3 [1.6 to 3.0]	2.9 [2.2 to 3.7]	2.0 [1.4 to 2.8]	2.4 [1.7 to 3.1]	2.2 [1.5 to 3.0]	2.6 [1.8 to 3.3]
6 month follow up	1.6 [0.9 to 2.3]	1.7 [1.0 to 2.5]	2.3 [1.6 to 3.0]	2.9 [2.1 to 3.6]	2.0 [1.4 to 2.8]	2.3 [1.6 to 3.0]	2.2 [1.5 to 3.0]	2.5 [1.8 to 3.2]
12 month follow up	1.8 [1.1 to 2.5]	2.0 [1.2 to 2.7]	2.3 [1.6 to 3.0]	2.9 [2.1 to 3.6]	2.3 [1.6 to 3.0]	2.6 [1.9 to 3.3]	2.4 [1.6 to 3.0]	2.7 [1.9 to 3.4]
<b>Duration of pain (hours per day)</b>								
Baseline	4.0 [1.9 to 6.2]	3.0 [0.9 to 5.2]	6.6 [4.5 to 8.8]	7.4 [5.3 to 9.6]	7.0 [4.8 to 9.1]	7.0 [5.0 to 9.0]	6.5 [4.3 to 8.7]	6.5 [4.4 to 8.6]
Month 1	4.0 [1.7 to 6.1]	2.9 [0.8 to 5.1]	6.4 [4.3 to 8.6]	7.2 [5.1 to 9.4]	7.3 [5.2 to 9.5]	7.4 [5.4 to 9.4]	6.5 [4.4 to 8.8]	6.6 [4.5 to 8.8]
Month 2	3.0 [0.9 to 5.2]	2.1 [0.0 to 4.2]	6.4 [4.2 to 8.5]	7.2 [5.0 to 9.4]	5.0 [2.8 to 7.1]	5.0 [3.0 to 7.0]	5.3 [3.2 to 7.6]	5.4 [3.3 to 7.5]
Month 3	2.9 [0.8 to 5.1]	2.0 [0.0 to 4.1]	4.0 [1.9 to 6.1]	4.8 [2.7 to 7.0]	4.2 [3.0 to 6.3]	4.2 [2.2 to 6.3]	4.6 [2.4 to 6.8]	4.6 [2.5 to 6.7]
1 month follow up	3.1 [0.9 to 5.3]	2.1 [0.0 to 4.3]	5.2 [3.1 to 7.4]	6.0 [3.9 to 8.2]	5.2 [3.0 to 7.3]	5.2 [3.2 to 7.2]	4.0 [1.8 to 6.2]	4.1 [2.0 to 6.2]
6 month follow up	3.0 [0.8 to 5.2]	2.0 [0.0 to 4.1]	5.1 [3.0 to 7.2]	6.0 [3.8 to 8.1]	5.3 [3.1 to 7.4]	5.3 [3.3 to 7.3]	4.0 [1.8 to 6.2]	4.0 [2.0 to 6.1]
12 month follow up	3.3 [1.1 to 5.5]	2.3 [0.1 to 4.5]	4.9 [2.8 to 7.1]	5.8 [3.6 to 8.0]	5.5 [3.4 to 7.7]	5.6 [3.6 to 7.6]	4.3 [2.1 to 6.5]	4.3 [2.2 to 6.5]

(Continued)

Table 2. (Continued)

Group	HF-MA n = 18		HF-EA n = 19		LF-MA n = 19		LF-EA n = 18	
	Unadjusted Mean [95% CI]	Adjusted Mean [95% CI]	Unadjusted Mean [95% CI]	Adjusted Mean [95% CI]	Unadjusted Mean [95% CI]	Adjusted Mean [95% CI]	Unadjusted Mean [95% CI]	Adjusted Mean [95% CI]
<b>Analgesic medication (doses per day)</b>								
Baseline	0.52 [0.32 to 0.74]	0.34 [0.16 to 0.52]	0.7 [0.49 to 0.9]	0.55 [0.37 to 0.72]	0.47 [0.26 to 0.67]	0.38 [0.21 to 0.56]	0.51 [0.30 to 0.72]	0.43 [0.25 to 0.61]
Month 1	0.25 [0.05 to 0.47]	0.25 [0.07 to 0.43]	0.62 [0.41 to 0.82]	0.60 [0.43 to 0.78]	0.33 [0.13 to 0.54]	0.30 [0.12 to 0.48]	0.43 [0.21 to 0.64]	0.42 [0.24 to 0.60]
Month 2	0.36 [0.15 to 0.56]	0.37 [0.19 to 0.54]	0.51 [0.30 to 0.71]	0.43 [0.25 to 0.61]	0.29 [0.09 to 0.49]	0.29 [0.11 to 0.47]	0.43 [0.21 to 0.64]	0.42 [0.24 to 0.60]
Month 3	0.34 [0.13 to 0.55]	0.28 [0.10 to 0.46]	0.46 [0.26 to 0.67]	0.40 [0.23 to 0.58]	0.25 [0.05 to 0.46]	0.21 [0.04 to 0.39]	0.38 [0.17 to 0.60]	0.39 [0.20 to 0.57]
1 month follow up	0.28 [0.07 to 0.48]	0.22 [0.05 to 0.40]	0.58 [0.37 to 0.78]	0.51 [0.33 to 0.70]	0.27 [0.07 to 0.47]	0.26 [0.09 to 0.44]	0.44 [0.23 to 0.65]	0.43 [0.25 to 0.61]
6 month follow up	0.36 [0.16 to 0.58]	0.28 [0.10 to 0.46]	0.55 [0.34 to 0.75]	0.50 [0.32 to 0.67]	0.27 [0.07 to 0.47]	0.26 [0.09 to 0.44]	0.47 [0.26 to 0.68]	0.45 [0.26 to 0.63]
12 month follow up	0.48 [0.27 to 0.70]	0.36 [0.17 to 0.53]	0.54 [0.33 to 0.75]	0.49 [0.31 to 0.67]	0.31 [0.10 to 0.51]	0.29 [0.1 to 0.47]	0.58 [0.37 to 0.80]	0.52 [0.34 to 0.71]

<https://doi.org/10.1371/journal.pone.0180177.t002>

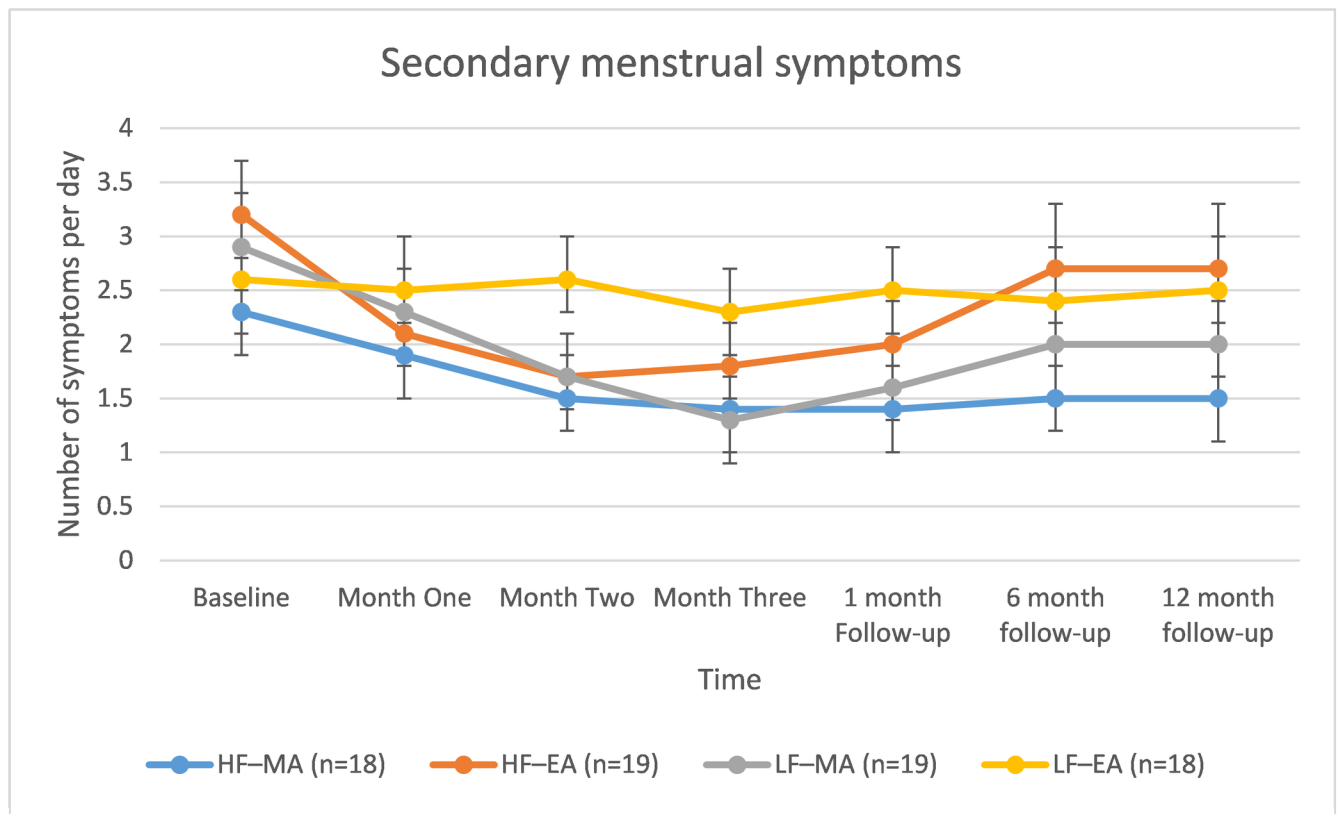


Fig 2. Secondary menstrual symptoms by group over time. Error bars are 95% confidence intervals based on estimated margin means.

<https://doi.org/10.1371/journal.pone.0180177.g002>

had significantly higher menstrual symptom count at Month Two to all groups, at Month Three compared with HF-MA (MD -0.975, 95% CI -1.7 to -0.2,  $p = 0.005$ ) and LF-MA (MD -0.908, 95% CI -0.14 to -1.6,  $p = 0.011$ ) and at one-month follow-up to HF-MA (MD -1.1, 95% CI -0.32 to -1.9,  $p = 0.001$ ) and LF-MA (MD -0.92, 95% CI -0.12 to -1.7,  $p = 0.013$ ). At six and 12-month follow-up the HF-MA group had significantly lower secondary symptom count compared to both HF-EA (MD -1.12, 95% CI -1.9 to -0.30,  $p = 0.003$ ) and LF-EA (MD -0.956, 95% CI -1.79 to -0.12,  $p = 0.018$ ).

**Responder rate.** The proportion of responders with clinically significant pain reduction of 30% in their peak pain was highest in the HF-MA group across all three days (55%, 60% and 61% of women respectively) and over a third of women in this group had a 70% reduction in their peak pain (See Table 3). Almost three-quarters (72%) of the women in the HF-MA group had a clinically significant 30% reduction in their average pain, with 69% of the LF-MA group, 61% of the LF-EA group and the 47% of the HF-EA group achieving this reduction. Almost 60% of the LF-MA group and 55% of the HF-MA group had a 50% reduction in average pain from baseline to one-month follow-up. The electro-acupuncture groups had lower scores, with 42% and 33% of the HF-EA and LF-EA groups achieving a 50% reduction.

**Health-related quality of life (SF-36v2).** Overall, both the high-frequency groups showed a greater number of improvements in the SF-36 domains (six domains) compared to the low-frequency groups (two domains). Health related quality of life measured by the SF-36 improved across a number of domains, between baseline and one-month follow-up (see Table 4). Paired t-tests showed that there were improvements in the domains of role physical ( $p = 0.0029$ ), bodily pain ( $p = 0.0002$ ), vitality ( $p = 0.028$ ), social function ( $p = 0.0067$ ) and overall physical component ( $p = 0.001$ ) between baseline and one-month follow-up. A one-way ANOVA showed no difference between groups at the one month follow-up time point.

**Self-rated symptom improvement.** At the end of the intervention the mean self-rated improvement score by group was HF-MA 7.4 (95% CI 6.13 to 8.67), HF-EA 6.75 (95% CI 5.15 to 8.35), LF-MA 7.47 (95% CI 6.44 to 8.50), and LF-EA 6.5 (95% CI 5.07 to 7.93). Overall self-rated improvement score, independent of group was 7.05 (95% CI 6.43 to 7.67). A one-way ANOVA showed no difference between groups in self-rated improvement ( $F(3,58) = .577$ ,  $p = 0.632$ ). Participants were asked to list the symptoms, if any, that they thought improved the most during the trial. Women reported that abdominal cramps were the most common symptom to improve, with 36 women indicating abdominal pain or cramping showed significant improvement. Emotional changes (13 women) and back and leg pain (15 women) were also commonly reported improvements.

**Safety.** Fifty-two adverse events (AE) occurred over 702 acupuncture sessions, giving an overall adverse event rate of 7.4% (95% CI 5.6 to 9.6) (see Table 5). There was no difference in AE rate between groups. Most of the events were minor and self-limiting. Bruising (haematoma) was the most common adverse event (50% of all AE or 3.7% of treatments) with post treatment soreness occurring in 1.4% of treatments and fatigue in 1.1% of treatments.

## Discussion

Acupuncture treatment, regardless of group, using a manualised acupuncture protocol, showed significant clinical improvements in all menstrual pain scores recorded; 'peak pain' over the first three days of the menstrual period and 'average pain' over the entire menstrual period, and that reduction was sustained for twelve months. This was supported by a similar significant reduction across all other measures of menstrual impact; duration of pain, analgesic usage, secondary menstrual symptoms and a high self-rated improvement score. Electro-acupuncture did not deliver greater pain reduction than manual acupuncture. Manual acupuncture groups

**Table 3. Proportion of responders at each pain-reduction percentage between baseline and follow-up.**

	Day One			Day Two			Day Three		
	30%	50%	70%	30%	50%	70%	30%	50%	70%
HF-MA	55.6%	50.0%	38.9%	61.1%	44.4%	38.9%	61.1%	50.0%	38.9%
HF-EA	36.8%	26.3%	21.1%	42.1%	31.6%	26.3%	47.4%	47.4%	42.1%
LF-MA	52.6%	26.3%	15.8%	42.1%	31.6%	15.8%	52.6%	47.4%	36.8%
LF-EA	50.0%	44.4%	27.8%	38.9%	27.8%	22.2%	16.7%	11.1%	5.6%

<https://doi.org/10.1371/journal.pone.0180177.t003>

tended to have a higher responder rate, significantly greater reduction in secondary symptoms, and lower analgesic usage. With respect to health related quality of life six domains improved from baseline in the HF groups, with only two improving from baseline in the LF groups. There was no difference between manual and electro-acupuncture in terms of domains improved.

The lack of superiority of electro-acupuncture in terms of pain reduction was unexpected. Electro-acupuncture in the trial was delivered at a 2/100Hz frequency, which has been shown to provide maximal opioid gene expression by combining both high and low frequencies to provide maximal pain relief[46]. This high frequency-low frequency stimulation pattern is very common in gynaecological disorders[47], and is identical to the frequency used in many other trials of electro-acupuncture for primary dysmenorrhea[48–51]. Animal models suggest that needling at REN4, SP8 and SP6, used in 80%, 55% and 98% of all study treatments respectively, regulates neuro-endocrine activities, including levels of progesterone[52]; and needling SP6 has been shown to increase ovarian blood flow via a reflex response in rats[53]. A similar reflex response exists in humans, increasing uterine blood flow by reducing sympathetic activity on vasoconstrictor fibres that innervate the uterus[25, 54]. Uterine blood flow is often reduced in women with primary dysmenorrhea[55, 56] and increasing uterine blood flow appears to be related to some of the analgesic benefits of acupuncture in primary dysmenorrhea[50, 57]. The magnitude of the impact of needling SP6 and, to a lesser extent, REN4 and SP8, may be larger than stimulation-specific differences. Another plausible possibility is that the time course of increased endogenous opioid release caused by electro-acupuncture is too short to contribute to a noticeable overall reduction in menstrual pain [58].

In addition to reductions in pain, many women had a reduction in their secondary menstrual symptoms. Inflammation is a primary cause of primary dysmenorrhea [59] and a

**Table 4. SF-36 scores at one-month follow-up.**

	HF-MA (n = 18)	HF-EA (n = 19)	LF-MA (n = 17)	LF-EA (n = 15)	Total (n = 69)	
	mean (SD)	mean (SD)	mean (SD)	mean (SD)	mean (SD)	p-value (baseline to follow-up)
Physical function	55.6 (2.6)	56.2 (1.2)	53.3 (5.1)	55.6 (3.5)	55.2 (3.5)	0.207
Role physical	54.2 (5.0)	50.7 (6.7)*	52.1 (4.4)	49.9 (6.8)	51.8 (5.9)	0.0029*
Bodily pain	50.7 (6.4)	48.7 (9.0)*	48.0 (7.4)*	47.2 (6.7)	48.7 (7.4)	0.0002*
General health	52.8 (11.2)	51.7 (9.1)	52.99 (7.9)	53.4 (7.9)	53.0 (9.0)	0.12
Vitality	52.7 (8.3)*	47.6 (8.9)	49.8 (10.8)	47.4 (9.5)	49.5 (9.4)	0.028*
Social function	53.9 (7.0)*	48.6 (10.0)*	47.3 (9.2)	46.6 (6.7)	49.2 (8.7)	0.0067*
Role emotional	50.7 (7.2)	47.9 (7.8)	48.6 (9.9)	47.5 (8.4)	48.75 (8.4)	0.209
Mental health	51.3 (7.6)	51.2 (7.2)	48.8 (10.7)	49.2 (8.6)	50.2 (8.5)	0.267
Overall mental component	50.6 (9.6)*	47.3 (9.5)	47.1 (12.2)	46.0 (9.3)	47.89 (10.1)	0.142
Overall physical component	54.5 (5.8)	53.1 (5.2)*	52.8 (6.7)	52.9 (6.8)*	53.3 (6.0)	0.001*

\* indicates significant change between baseline and one-month follow-up.

<https://doi.org/10.1371/journal.pone.0180177.t004>

**Table 5. Adverse events during the treatment period.**

Adverse event	% of total treatments (95% CI)
Bruising	3.7% [2.5 to 5.3]
Post-treatment soreness	1.4% [0.74 to 2.6]
Fatigue	1.1% [0.54 to 2.2]
Feeling faint	0.28% [0.1 to 1.1]
Itching	0.14% [0.1 to 0.89]
Bowel changes	0.14% [0.1 to 0.89]
Burns	0.14% [0.1 to 0.89]

<https://doi.org/10.1371/journal.pone.0180177.t005>

possible cause of PMS symptoms, including mood changes, bloating and breast tenderness [60]. The wide range of improvements in both pain and PMS related symptoms, especially mood changes, seen in this trial provide support for acupuncture’s posited anti-inflammatory effects[24], future research including suitable bio-makers would provide more information on these possible pathways.

Analgesic medication usage was lower amongst the manual acupuncture groups. As analgesic usage was allowed *ad libitum* women may have used analgesic medication to achieve an acceptable level of pain. Therefore, the lower usage of analgesic medication amongst these two groups suggests that without analgesic usage there may have been more pronounced differences between these two groups. The reasons for this lower use are unclear, as electro-acupuncture should provide at least the same amount of relief as manual acupuncture, as the needles were stimulated to obtain DeQi prior to electro-stimulation, thereby delivering a manual acupuncture-like stimulus prior to the addition of the electro-acupuncture pulse[61]. The changes in the HRQoL SF-36 domains suggest that after the course of acupuncture treatment, participants had less problems with work or daily activities as a result of their physical health, less pain and subsequent limitations due to pain, more energy, and less interference from physical and emotional problems in social activities[62], all of which are commonly experienced by women with primary dysmenorrhea [8, 63].

In terms of pain reduction, the trial findings were similar to results provided by previous studies. Direct comparison to studies performed in China[29, 48–51] with very short time-scales of measurement post-treatment are problematic as these may not represent meaningful changes over the entire menses. Comparisons with other trials outside of China tend to show similar results to this study. Absolute pain reductions were less than Witt (Germany)[45] and Helms (US) [64] but similar to that found by Smith (Australia)[44]. Comparison with Helms [64] is complicated by the fact that the sample size was very small, showing no between group differences and the use of a custom pain scale that was not validated. The greater absolute pain reduction found by Witt [45] may be due to the nature of the intervention, where physicians were allowed to choose treatment without restriction, or due to the greater sample size, almost ten times the size of this study. However, the responder rates (>30% reduction in average pain from baseline) were similar to Witt’s, showing that the percentage pain reduction from baseline was relatively equal between the two studies. Similarly to Smith [44] and Witt [45], reductions in pain in this study appeared to be sustained or increased after the trial period ended.

There were no between group differences in all pain outcome measures, despite large differences in responder rates between groups. This is most likely due to the exploratory nature of the study, which was not powered to detect small between group differences. A *post-hoc* power analysis shows that a sample size of 192 would be required to determine a 20% difference between groups for average pain. While a difference of >30% from baseline is considered clinically important, the size of differences between groups that are important to participants

appears to be dependent on the condition treated[43]. In this case, these between group differences do not appear to significantly alter how successful women felt their treatment was, supported by the fact there was no difference in self-reported improvement score between groups, however, future studies with significantly more participants would be required to answer this question.

The strengths of this exploratory study were that it recruited a group of participants who were representative of women in the community with dysmenorrhea, having a variety of secondary symptoms, including back pain, fatigue, breast tenderness, nausea, headaches and bowel changes, consistent with many other populations with primary dysmenorrhea[8, 9, 34]. Analgesic usage amongst the study participants was very prevalent (81%), almost identical to the prevalence of analgesic usage in Australian women with dysmenorrhea (80%)[65]. There are several limitations on this exploratory study: Due to the high loss to follow-up at 6 and 12 months the significant use of last observation carried forward in a small sample such as this could contribute to over-estimating the duration of the treatment effect in the intention to treat analysis, however a per-protocol analysis without using last observation carried forward showed similar results. The RCT, due to its design in comparing effectiveness of differing doses of acupuncture, did not have a usual care group. The changes observed over the 12 month period are unlikely to be due to natural reductions in the pain from primary dysmenorrhea[66]. Witt (Germany) [45] showed a 15% reduction in average menstrual pain in the usual care group at 3 months while our study found a 24% reduction in average pain independent of group allocation at the same time point. This suggests an additional benefit of acupuncture but our ability to determine the extent to which acupuncture treatment is responsible for the changes in pain, menstrual symptoms and health-related quality of life observed in the study is limited.

## Conclusion

This exploratory study suggests acupuncture administered over three menstrual cycles gave both statistically and clinically significant reductions in menstrual pain compared to baseline and persisted for 12 months, however there was no significant difference in pain intensity between groups. Electro-acupuncture was well tolerated but did not always provide the same magnitude of improvements as manual acupuncture in reducing secondary menstrual symptoms and analgesic medication intake. Manual acupuncture provided the same or greater pain relief as electro-acupuncture, but with less analgesic medication required to achieve this pain reduction. Treatment timing appears to play a small role, with high frequency of treatment providing greater improvements in health-related quality of life. This exploratory trial suggests that there may be an effect of both treatment timing and mode of stimulation, but possibly only of small clinical benefit. Future adequately powered studies are needed to confirm the role of both mode of stimulation and treatment timing and to provide a more accurate indication of the clinical impact of altering these dose components on menstrual pain.

## Supporting information

### **S1 Fig. Diagnosis and point selection.**

(DOCX)

### **S1 File. Manualised acupuncture trial protocol.**

(PDF)

### **S2 File. Menstrual pain diary.**

(PDF)

**S3 File. Trial exit questionnaire.**  
(PDF)

**S4 File. Per protocol analysis.**  
(DOCX)

**S1 Consort Checklist.**  
(DOC)

**S1 Appendix. Protocol for the RCT.**  
(DOCX)

**S2 Appendix. Data analysis file ITT (SPSS).**  
(SAV)

**S3 Appendix. Data analysis file PP (SPSS).**  
(SAV)

**S4 Appendix. Model fit data.**  
(XLSX)

**S5 Appendix. Raw SF-36 data.**  
(XLSX)

**S6 Appendix. Demographic dataset.**  
(SAV)

## Acknowledgments

Thanks to Dr Kingsley Agho, Dr Avinesh Pillai, Dr Haider Mannan and Mr Paul Fahey for their statistical advice, Dr Debra Betts, Ms Kate Roberts and Ms Serena Joe for their assistance with organising and delivering the trial intervention, Brendon Hooker and Julian Cloete for the use of the treatment space, all of the staff at NICM and all the women who participated in this study.

## Author Contributions

**Conceptualization:** MA CS HD XZ CF.

**Data curation:** MA.

**Formal analysis:** MA CS CF.

**Investigation:** MA.

**Methodology:** MA CS HD XZ CF.

**Project administration:** MA CS HD.

**Resources:** MA CS HD XZ.

**Supervision:** CS HD XZ CF.

**Visualization:** MA CS CF.

**Writing – original draft:** MA.

**Writing – review & editing:** MA CS HD XZ CF.



## References

1. Proctor M, Farquhar C. Diagnosis and management of dysmenorrhoea. *BMJ*. 2006; 332(7550):1134–8. <https://doi.org/10.1136/bmj.332.7550.1134> PMID: 16690671
2. Wong CL, Farquhar C, Roberts H, Proctor M. Oral contraceptive pill for primary dysmenorrhoea. *Cochrane Database Syst Rev*. 2009(4):CD002120. <https://doi.org/10.1002/14651858.CD002120.pub3> PMID: 19821293
3. Latthe P, Latthe M, Say L, Gülmezoglu M, Khan KS. WHO systematic review of prevalence of chronic pelvic pain: a neglected reproductive health morbidity. *BMC Public Health*. 2006; 6:177. <https://doi.org/10.1186/1471-2458-6-177> PMID: 16824213
4. Pitts MK, Ferris JA, Smith AM, Shelley JM, Richters J. Prevalence and correlates of three types of pelvic pain in a nationally representative sample of Australian women. *Med J Aust*. 2008; 189(3):138–43. PMID: 18673099
5. Davis AR, Westhoff CL. Primary dysmenorrhea in adolescent girls and treatment with oral contraceptives. *J Pediatr Adolesc Gynecol*. 2001; 14(1):3–8. PMID: 11358700
6. Zahradnik H-P, Hanjalic-Beck A, Groth K. Nonsteroidal anti-inflammatory drugs and hormonal contraceptives for pain relief from dysmenorrhea: a review. *Contraception*. 2010; 81(3):185–96. <https://doi.org/10.1016/j.contraception.2009.09.014> PMID: 20159173
7. Andersch B, Milsom I. An epidemiologic study of young women with dysmenorrhea. *Am J Obstet Gynecol*. 1982; 144(6):655–60. PMID: 7137249
8. Banikarim C, Chacko MR, Kelder SH. Prevalence and impact of dysmenorrhea on hispanic female adolescents. *Arch Pediatr Adolesc Med*. 2000; 154(12):1226–9. PMID: 11115307
9. Hillen TI, Grbavac SL, Johnston PJ, Straton JA, Keogh JM. Primary dysmenorrhea in young western australian women: prevalence, impact, and knowledge of treatment. *Journal of Adolescent Health*. 1999; 25(1):40–5. PMID: 10418884
10. Campbell MA, McGrath PJ. Use of medication by adolescents for the management of menstrual discomfort. *Arch Pediatr Adolesc Med*. 1997; 151(9):905–13. PMID: 9308868
11. Jamieson DJ, Steege JF. The prevalence of dysmenorrhea, dyspareunia, pelvic pain, and irritable bowel syndrome in primary care practices. *Obstet Gynecol*. 1996; 87(1):55–8. PMID: 8532266
12. Armour M, Dahlen HG, Smith CA. More Than Needles: The Importance of Explanations and Self-Care Advice in Treating Primary Dysmenorrhea with Acupuncture. *Evid Based Complement Alternat Med*. 2016; 2016:3467067. <https://doi.org/10.1155/2016/3467067> PMID: 27242909
13. Marjoribanks J, Proctor M, Farquhar C, Derks RS. Nonsteroidal anti-inflammatory drugs for dysmenorrhoea. *Cochrane Database Syst Rev*. 2010(1):CD001751. <https://doi.org/10.1002/14651858.CD001751.pub2> PMID: 20091521
14. Howard F, Perry P, Carter J, El-Minawi A. *Pelvic Pain: diagnosis and management*. Philadelphia: Lippincott Williams and Wilkins; 2000.
15. MacKichan F, Paterson C, Henley WE, Britten N. Self-care in people with long term health problems: a community based survey. *BMC Family Practice*. 2011; 12:53. <https://doi.org/10.1186/1471-2296-12-53> PMID: 21689455
16. Ryan A, Wilson S, Taylor A, Greenfield S. Factors associated with self-care activities among adults in the United Kingdom: a systematic review. *BMC Public Health*. 2009; 9:96. <https://doi.org/10.1186/1471-2458-9-96> PMID: 19344526
17. Fisher C, Adams J, Hickman L, Sibbritt D. The use of complementary and alternative medicine by 7427 Australian women with cyclic perimenstrual pain and discomfort: a cross-sectional study. *BMC Complement Altern Med*. 2016; 16:129. <https://doi.org/10.1186/s12906-016-1119-8> PMID: 27189381
18. Chang S-F, Chuang M-H. Factors that affect self-care behaviour of female high school students with dysmenorrhoea: a cluster sampling study. *International Journal of Nursing Practice*. 2012; 18(2):117–24. <https://doi.org/10.1111/j.1440-172X.2012.02007.x> PMID: 22435974
19. Chia CF, Lai JHY, Cheung PK, Kwong LT, Lau FPM, Leung KH et al. Dysmenorrhoea among hong kong university students: prevalence, impact, and management. *Hong Kong Medical Journal*. 2013; 19(3):222–8. <https://doi.org/10.12809/hkmj133807> PMID: 23568937
20. Chen C-H, Lin Y-H, Heitkemper MM, Wu K-M. The self-care strategies of girls with primary dysmenorrhea: a focus group study in taiwan. *Health Care Women Int*. 2006; 27(5):418–27. <https://doi.org/10.1080/07399330600629583> PMID: 16877292
21. Smith CA, Armour M, Betts D. Treatment of women's reproductive health conditions by australian and new zealand acupuncturists. *Complement Ther Med*. 2014; 22(4):710–8. <https://doi.org/10.1016/j.ctim.2014.06.001> PMID: 25146076

22. Smith CA, Armour M, Zhu X, Li X, Lu ZY, Song J. Acupuncture for dysmenorrhoea. *Cochrane Database Syst Rev.* 2016; 4:CD007854. <https://doi.org/10.1002/14651858.CD007854.pub3> PMID: 27087494
23. Wang S-M, Kain ZN, White P. Acupuncture analgesia: I. The scientific basis. *Anesthesia and analgesia.* 2008; 106(2):602–10. <https://doi.org/10.1213/01.ane.0000277493.42335.7b> PMID: 18227322
24. McDonald JL, Cripps AW, Smith PK. Mediators, Receptors, and Signalling Pathways in the Anti-Inflammatory and Antihyperalgesic Effects of Acupuncture. *Evid Based Complement Alternat Med.* 2015; 2015:975632. <https://doi.org/10.1155/2015/975632> PMID: 26339274
25. Stener-Victorin E, Waldenström U, Andersson SA, Wikland M. Reduction of blood flow impedance in the uterine arteries of infertile women with electro-acupuncture. *Hum Reprod.* 1996; 11(6):1314–7. PMID: 8671446
26. Xu T, Hui L, Juan YL, Min SG, Hua WT. Effects of moxibustion or acupoint therapy for the treatment of primary dysmenorrhea: a meta-analysis. *Altern Ther Health Med.* 2014; 20(4):33–42. PMID: 25141361
27. Harris RE, Tian X, Williams DA, Tian TX, Cupps TR, Petzke F et al. Treatment of fibromyalgia with formula acupuncture: investigation of needle placement, needle stimulation, and treatment frequency. *Journal of Alternative & Complementary Medicine.* 2005; 11(4):663–71.
28. Zhi L. Randomised controlled study on superficial needling for treatment of primary dysmenorrhea. *Chinese Acupuncture and Moxibustion.* 2007; 27(1):18–21. PMID: 17378197
29. Ma Y-X, Ye X-N, Liu C-Z, Cai P-Y, Li Z-F, Du D-Q et al. A clinical trial of acupuncture about time-varying treatment and points selection in primary dysmenorrhea. *J Ethnopharmacol.* 2013; 148(2):498–504. <https://doi.org/10.1016/j.jep.2013.04.045> PMID: 23684618
30. Bu Y-Q, Du G-Z, Chen S-Z. Clinical study on the treatment of primary dysmenorrhea with preconditioning acupuncture. *Chin J Integr Med.* 2011; 17(3):224–7. <https://doi.org/10.1007/s11655-011-0671-9> PMID: 21359925
31. Schnyer RN, Allen JJB. Bridging the gap in complementary and alternative medicine research: manualization as a means of promoting standardization and flexibility of treatment in clinical trials of acupuncture. *J Altern Complement Med.* 2002; 8(5):623–34. <https://doi.org/10.1089/107555302320825147> PMID: 12470444
32. Macpherson H. Pragmatic clinical trials. *Complement Ther Med.* 2004; 12(2–3):136–40. <https://doi.org/10.1016/j.ctim.2004.07.043> PMID: 15561524
33. MacPherson H, Altman DG, Hammerschlag R, Li Y, Wu T, White A et al. Revised STAndards for Reporting Interventions in Clinical Trials of Acupuncture (STRICTA): extending the CONSORT statement. *Acupunct Med.* 2010; 28(2):83–93. <https://doi.org/10.1136/aim.2009.001370> PMID: 20615861
34. O'Connell K, Davis AR, Westhoff C. Self-treatment patterns among adolescent girls with dysmenorrhea. *J Pediatr Adolesc Gynecol.* 2006; 19(4):285–9. <https://doi.org/10.1016/j.jpjag.2006.05.004> PMID: 16873033
35. Griffin HJ, O'Connor HT, Rooney KB, Steinbeck KS. Effectiveness of strategies for recruiting overweight and obese Generation Y women to a clinical weight management trial. *Asia Pacific journal of clinical nutrition.* 2013; 22(2):235–40. <https://doi.org/10.6133/apjcn.2013.22.2.16> PMID: 23635367
36. Liu Y-Q, Ma L-X, Xing J-M, Cao H-J, Wang Y-X, Tang L et al. Does traditional chinese medicine pattern affect acupoint specific effect? analysis of data from a multicenter, randomized, controlled trial for primary dysmenorrhea. *J Altern Complement Med.* 2012. <https://doi.org/10.1089/acm.2011.0404> PMID: 22823583
37. Deadman P, Al-Khafaji M, Baker K. A manual of acupuncture. 2nd, revised ed. Hove, East Sussex, England: Journal of Chinese Medicine; 1998.
38. White A, Cummings M, Barlas P, Cardini F, Filshie J, Foster NE et al. Defining an adequate dose of acupuncture using a neurophysiological approach—a narrative review of the literature. *Acupunct Med.* 2008; 26(2):111–20. PMID: 18591910
39. Hjermstad MJ, Fayers PM, Haugen DF, Caraceni A, Hanks GW, Loge JH et al. Studies comparing Numerical Rating Scales, Verbal Rating Scales, and Visual Analogue Scales for assessment of pain intensity in adults: a systematic literature review. *J Pain Symptom Manage.* 2011; 41(6):1073–93. <https://doi.org/10.1016/j.jpainsymman.2010.08.016> PMID: 21621130
40. Brazier JE, Harper R, Jones NM, O'Cathain A, Thomas KJ, Usherwood T et al. Validating the SF-36 health survey questionnaire: new outcome measure for primary care. *BMJ.* 1992; 305(6846):160–4. PMID: 1285753
41. Unsal A, Ayranci U, Tozun M, Arslan G, Calik E. Prevalence of dysmenorrhea and its effect on quality of life among a group of female university students. *Ups J Med Sci.* 2010; 115(2):138–45. <https://doi.org/10.3109/03009730903457218> PMID: 20074018

42. Dworkin RH, Turk DC, Wyrwich KW, Beaton D, Cleeland CS, Farrar JT et al. Interpreting the clinical importance of treatment outcomes in chronic pain clinical trials: IMMPACT recommendations. *J Pain*. 2008; 9(2):105–21. <https://doi.org/10.1016/j.jpain.2007.09.005> PMID: 18055266
43. Dworkin RH, Turk DC, McDermott MP, Peirce-Sandner S, Burke LB, Cowan P et al. Interpreting the clinical importance of group differences in chronic pain clinical trials: IMMPACT recommendations. *Pain*. 2009; 146(3):238–44. <https://doi.org/10.1016/j.pain.2009.08.019> PMID: 19836888
44. Smith CA, Crowther CA, Petrucco O, Beilby J, Dent H. Acupuncture to treat primary dysmenorrhea in women: a randomized controlled trial. *Evid Based Complement Alternat Med*. 2011; 2011:612464. <https://doi.org/10.1093/ecam/nep239> PMID: 21799683
45. Witt CM, Reinhold T, Brinkhaus B, Roll S, Jena S, Willich SN. Acupuncture in patients with dysmenorrhea: a randomized study on clinical effectiveness and cost-effectiveness in usual care. *Am J Obstet Gynecol*. 2008; 198(2):166.e1–8. <https://doi.org/10.1016/j.ajog.2007.07.041> PMID: 18226614
46. Guo HF, Tian J, Wang X, Fang Y, Hou Y, Han J. Brain substrates activated by electroacupuncture of different frequencies (I): Comparative study on the expression of oncogene c-fos and genes coding for three opioid peptides. *Brain Res Mol Brain Res*. 1996; 43(1–2):157–66. PMID: 9037529
47. Mayor D. An exploratory review of the electroacupuncture literature: clinical applications and endorphin mechanisms. *Acupunct Med*. 2013; 31(4):409–15. <https://doi.org/10.1136/acupmed-2013-010324> PMID: 23917395
48. Liu C-Z, Xie J-P, Wang L-P, Zheng Y-Y, Ma Z-B, Yang H et al. Immediate analgesia effect of single point acupuncture in primary dysmenorrhea: a randomized controlled trial. *Pain Med*. 2011; 12(2):300–7. <https://doi.org/10.1111/j.1526-4637.2010.01017.x> PMID: 21166767
49. Shi G-X, Liu C-Z, Zhu J, Guan L-P, Wang D-J, Wu M-M. Effects of acupuncture at sanyinjiao (SP6) on prostaglandin levels in primary dysmenorrhea patients. *The Clinical journal of pain*. 2011; 27(3):258–61. <https://doi.org/10.1097/AJP.0b013e3181fb27ae> PMID: 21358291
50. Ma Y-X, Ma L-X, Liu X-L, Ma Y-X, Lv K, Wang D et al. A comparative study on the immediate effects of electroacupuncture at sanyinjiao (SP6), xuanzhong (GB39) and a non-meridian point, on menstrual pain and uterine arterial blood flow, in primary dysmenorrhea patients. *Pain Med*. 2010; 11(10):1564–75. <https://doi.org/10.1111/j.1526-4637.2010.00949.x> PMID: 21199306
51. Liu C-Z, Xie J-P, Wang L-P, Liu Y-Q, Song J-S, Chen Y-Y et al. A randomized controlled trial of single point acupuncture in primary dysmenorrhea. *Pain Med*. 2014. <https://doi.org/10.1111/pme.12392> PMID: 24636695
52. Liu F, Xiong J, Huang G-y, Wang W. [Study on the underlying mechanism of acupuncture in regulating neuroendocrine activity in dysmenorrhea rats]. *Zhen Ci Yan Jiu*. 2009; 34(1):3–8. PMID: 19526799
53. Stener-Victorin E, Fujisawa S, Kurosawa M. Ovarian blood flow responses to electroacupuncture stimulation depend on estrous cycle and on site and frequency of stimulation in anesthetized rats. *Journal of Applied Physiology*. 2006; 101(1):84–91. <https://doi.org/10.1152/jappphysiol.01593.2005> PMID: 16514000
54. Meiqing W, Jiang Z, Lufen Z. Experimental study on the mechanism of electroacupuncture at LI 4 and SP 6 points for promoting labor. *Chinese Acupuncture & Moxibustion*. 2003; 10:012.
55. Celik H, Gurates B, Parmaksiz C, Polat A, Hanay F, Kavak B et al. Severity of pain and circadian changes in uterine artery blood flow in primary dysmenorrhea. *Arch Gynecol Obstet*. 2009; 280(4):589–92. <https://doi.org/10.1007/s00404-009-0966-7> PMID: 19219445
56. Dmitrović R. Transvaginal color doppler study of uterine blood flow in primary dysmenorrhea. *Acta Obstet Gynecol Scand*. 2000; 79(12):1112–6. PMID: 11130097
57. Yu Y-P, Ma L-X, Ma Y-X, Ma Y-X, Liu Y-Q, Liu C-Z et al. Immediate effect of acupuncture at sanyinjiao (SP6) and xuanzhong (GB39) on uterine arterial blood flow in primary dysmenorrhea. *J Altern Complement Med*. 2010; 16(10):1073–8. <https://doi.org/10.1089/acm.2009.0326> PMID: 20932189
58. Wang SM, Kain ZN, White P. Acupuncture analgesia: I. The scientific basis. *Anesth Analg*. 2008; 106(2):602–10. <https://doi.org/10.1213/01.ane.0000277493.42335.7b> PMID: 18227322
59. Dawood MY. Primary dysmenorrhea: advances in pathogenesis and management. *Obstet Gynecol*. 2006; 108(2):428–41. <https://doi.org/10.1097/01.AOG.0000230214.26638.0c> PMID: 16880317
60. Gold EB, Wells C, Rasor MON. The Association of Inflammation with Premenstrual Symptoms. *Journal of Women's Health*. 2016. <https://doi.org/10.1089/jwh.2015.5529> PMID: 27135720
61. Langevin H, Schnyer R, MacPherson H, Davis R, Harris RE, Napadow V et al. Manual and Electrical Needle Stimulation in Acupuncture Research: Pitfalls and Challenges of Heterogeneity. *J Altern Complement Med*. 2015. <https://doi.org/10.1089/acm.2014.0186> PMID: 25710206
62. Ware JE, Kosinski M, Keller S. SF-36 physical and mental health summary scales: a user's manual. Boston: Health Institute, New England Medical Center; 1994.

63. Baker FC, Driver HS, Rogers GG, Paiker J, Mitchell D. High nocturnal body temperatures and disturbed sleep in women with primary dysmenorrhea. *Am J Physiol.* 1999; 277(6 Pt 1):E1013–21.
64. Helms JM. Acupuncture for the management of primary dysmenorrhea. *Obstet Gynecol.* 1987; 69(1):51–6. PMID: [3540764](#)
65. Zhu X, Wong F, Bensoussan A, Lo SK, Zhou C, Yu J. Are there any cross-ethnic differences in menstrual profiles? a pilot comparative study on australian and chinese women with primary dysmenorrhea. *The Journal of Obstetrics and Gynaecology Research.* 2010; 36(5):1093–101. <https://doi.org/10.1111/j.1447-0756.2010.01250.x> PMID: [20846252](#)
66. Weissman AM, Hartz AJ, Hansen MD, Johnson SR. The natural history of primary dysmenorrhoea: a longitudinal study. *BJOG.* 2004; 111(4):345–52. PMID: [15008771](#)