



# HHS Public Access

Author manuscript

*IEEE Trans Neural Syst Rehabil Eng.* Author manuscript; available in PMC 2021 September 23.

Published in final edited form as:

*IEEE Trans Neural Syst Rehabil Eng.* 2021 ; 29: 993–1003. doi:10.1109/TNSRE.2021.3082056.

## Sharpened and Mechanically Durable Carbon Fiber Electrode Arrays for Neural Recording

**Elissa J. Welle,**

Department of Biomedical Engineering, University of Michigan, Ann Arbor, MI 48109 USA

**Joshua E. Woods,**

Department of Electrical Engineering and Computer Science, University of Michigan, Ann Arbor, MI 48109 USA; He is now with the Department of Electrical and Computer Engineering, Rice University, Houston, TX 77005 USA

**Ahmad A. Jiman,**

Department of Biomedical Engineering, University of Michigan, Ann Arbor, MI 48109 USA; He is now with the Department of Electrical and Computer Engineering, King Abdulaziz University, Jeddah 21589, Saudi Arabia

**Julianna M. Richie,**

Department of Biomedical Engineering, University of Michigan, Ann Arbor, MI 48109 USA

**Elizabeth C. Bottorff,**

Department of Biomedical Engineering, University of Michigan, Ann Arbor, MI 48109 USA

**Zhonghua Ouyang,**

Department of Biomedical Engineering, University of Michigan, Ann Arbor, MI 48109 USA

**John P. Seymour [Member, IEEE],**

Department of Electrical Engineering and Computer Science, University of Michigan, Ann Arbor, MI 48109 USA; He is now with the Department of Neurosurgery, The University of Texas Health Science Center at Houston, Houston, TX 77030 USA

**Paras R. Patel,**

Department of Biomedical Engineering, University of Michigan, Ann Arbor, MI 48109 USA

**Tim M. Bruns [Member, IEEE],**

Department of Biomedical Engineering, University of Michigan, Ann Arbor, MI 48109 USA

**Cynthia A. Chestek [Member, IEEE]**

Department of Biomedical Engineering, University of Michigan, Ann Arbor, MI 48109 USA

### Abstract

---

This work is licensed under a Creative Commons Attribution 4.0 License. For more information, see <https://creativecommons.org/licenses/by/4.0/>

Corresponding author: Elissa J. Welle, [elissajw@umich.edu](mailto:elissajw@umich.edu).

This article has supplementary downloadable material available at <https://doi.org/10.1109/TNSRE.2021.3082056>, provided by the authors.

Bioelectric medicine treatments target disorders of the nervous system unresponsive to pharmacological methods. While current stimulation paradigms effectively treat many disorders, the underlying mechanisms are relatively unknown, and current neuroscience recording electrodes are often limited in their specificity to gross averages across many neurons or axons. Here, we develop a novel, durable carbon fiber electrode array adaptable to many neural structures for precise neural recording. Carbon fibers (6.8  $\mu\text{m}$  diameter) were sharpened using a reproducible blowtorch method that uses the reflection of fibers against the surface of a water bath. The arrays were developed by partially embedding carbon fibers in medical-grade silicone to improve durability. We recorded acute spontaneous electrophysiology from the rat cervical vagus nerve (CVN), feline dorsal root ganglia (DRG), and rat brain. Blowtorching resulted in fibers of  $72.3 \pm 33.5$ -degree tip angle with  $146.8 \pm 17.7 \mu\text{m}$  exposed carbon. Observable neural clusters were recorded using sharpened carbon fiber electrodes from rat CVN ( $41.8 \mu\text{V}_{\text{pp}}$ ), feline DRG ( $101.1 \mu\text{V}_{\text{pp}}$ ), and rat brain ( $80.7 \mu\text{V}_{\text{pp}}$ ). Recordings from the feline DRG included physiologically relevant signals from increased bladder pressure and cutaneous brushing. These results suggest that this carbon fiber array is a uniquely durable and adaptable neural recording device. In the future, this device may be useful as a bioelectric medicine tool for diagnosis and closed-loop neural control of therapeutic treatments and monitoring systems.

## Keywords

Carbon fiber; dorsal root ganglia; electrophysiology; motor cortex; neural electrode; peripheral nerve interfacing; vagus nerve

## I. INTRODUCTION

BIOELECTRIC medicine therapies use electrical stimulation to treat disorders of the nervous system [1]. Well-established uses of bioelectric medicines include sacral nerve stimulation for bladder diseases [2], cervical vagus nerve (CVN) stimulation for epilepsy [3], and deep brain stimulation for Parkinson's disease [4]. More recently, CVN stimulation has been used to treat inflammation [5] and therapy-resistant depression [6]. In order to precisely modulate the function of target organs, devices incorporate unique electrode configurations, materials, stimulation patterns, and closed-loop control [7], [8]. Current electrode interfaces for neural stimulation are large extraneural leads [9] or nerve cuffs [10], [11]. These interfaces are generally effective for stimulation but are limited in selectivity, often leading to side effects [12]. Furthermore, these interfaces have minimal utility for monitoring neural signals, which requires specific, multi-channel recording of the nerve or target organ. Current open-loop bioelectric medicine therapies may increase in efficacy if recording devices delineate the mechanisms of organ control or obtain organ-state signals.

Towards that end, intraneural interfaces offer greater recording signal-to-noise ratio and stimulation selectivity than extraneural interfaces [13], [14]. Clinical intraneural interfaces include the Utah Slanted Electrode Array (USEA) [15], [16] and the longitudinal and transverse intrafascicular electrode arrays [17]–[19]. The selective access to axons and fascicles enabled by conventional intraneural interfaces has facilitated clinical research of nerve-machine interfaces [20], which connect peripheral nerves to an external robotic

device, allowing the nervous system to send motor commands to [21], and receive sensory input from the device [22]. However current interfaces have limited long-term viability due to electrode material failure [23], [24] and significant scarring [25], [26]. Additionally, their size (2–4 mm footprint for the USEA) [25] is not appropriate for the small nerves of the autonomic nervous system (0.3–0.5 mm diameter), which provide primary organ innervation. An ideal interface with autonomic nerves would maximize recording specificity while minimizing scarring, maintain a high channel count of small-footprint electrodes, and contain durable, biocompatible electrode materials.

Some recent interfaces are nearing these design criteria. Novel electrode development often starts with cortical applications that may later undergo translation to peripheral target locations. An injectable mesh-style SU-8 array with 10  $\mu\text{m}$ -diameter elements prompted minimal histological scarring and maintained long-term recording in the brain [27]. However, the injection method of insertion would be difficult to use in peripheral applications. Flexible carbon nanotube “yarn” electrodes recently demonstrated physiologically-relevant recordings in the rat CVN and glossopharyngeal nerves for up to 16 weeks with minimal scarring [28]. This suggests that ultra-small electrodes may be similarly biocompatible with nerves, as has been shown in the brain [29]–[31]. While capable of recording from awake animals, the fragile “yarn” material and manual insertion of each electrode with a shuttle or suture may limited the channel count of this design [32].

Neural interfaces constructed of rigid components at micron size scale may ease surgical implementation while still minimizing tissue response. A novel design uses carbon fiber electrodes, which have been primarily used for brain recordings [33]–[35], as a method to record from nerves [36]. The carbon fiber electrodes reported in Gillis *et al.*, 2017 successfully recorded acute spontaneous spiking activity [36]. However, most of their recordings were evoked responses to electrical stimulation, which are not as indicative of chronic in-dwelling performance as smaller-amplitude spontaneous neural signals. Additionally, the architecture of their array would be difficult to translate from acute to chronic implantation. The carbon fibers’ rigid junction to the substrate provides a likely breakage point. An array with sub-cellular carbon fiber electrodes that is compatible with peripheral geometry and capable of spontaneous neural recording is needed for neural interfacing.

Here, we develop and demonstrate a carbon fiber array comprised of several novel components: sharpened carbon fibers (SCFs, 6.8  $\mu\text{m}$  diameter), silicone-embedded carbon fibers, and a small (<2 mm) device architecture. Our sharpening method exhibits the carbon fibers of smallest known length to be sharpened, making carbon fibers suitable for chronic interfacing with small diameter autonomic nerves. We also show that long, sharpened, individuated carbon fibers are capable of self-insertion to depths of the brain previously only reached with insertion assistance. Our *in vivo* tests of SCFs show insertion into neural structures of varying stiffness and depths. Our benchtop experiments test the durability of carbon fibers embedded in silicone and the capability to survive many repeated cycles of bending. This suggests that subcellular carbon fiber electrodes with a stress-relieving backplane are a suitable electrode material for chronic residence in peripheral structures. We test the unique components of the array in the rat CVN, feline

dorsal root ganglia (DRG), and rat motor cortex. We demonstrate that SCF arrays record spontaneous and physiologically relevant neural clusters. Additionally, we verify that the small device architecture enables surgical handling while accessing neural structures of differing geometries. This work displays a versatile, unique set of capabilities for carbon fiber arrays in neural interfacing and indicates the potential for chronic use.

## II. METHODS

### A. Fabrication of Carbon Fiber Flex Array

Acute neural recordings from the rat CVN and feline DRG were collected using carbon fiber electrode arrays previously detailed in Patel *et al.*, 2020 [37]. In this application, the carbon fibers were cut to 150–200  $\mu\text{m}$  prior to sharpening.

### B. Fabrication of Carbon Fiber Silicone Array (CFSA)

This study exhibits a novel carbon fiber silicone array (CFSA) featuring carbon fibers (6.8  $\mu\text{m}$  diameter) partially embedded in silicone (Fig. 1). The overall array size is 1.75 mm  $\times$  500  $\mu\text{m}$   $\times$  750  $\mu\text{m}$  (length  $\times$  width  $\times$  thickness). The array is built on a custom polyimide PCB (MicroConnex, Snoqualmie, WA, USA), 450  $\mu\text{m}$   $\times$  6.81 mm  $\times$  50  $\mu\text{m}$  in size. A 1.5 mm long exposed section of the PCB contains 4 pairs of 430  $\mu\text{m}$ -long gold traces with 65  $\mu\text{m}$  pitch that are positioned 310  $\mu\text{m}$  apart (Fig. 1B). Each trace pair is electrically connected to a 90  $\mu\text{m}$ -diameter gold-plated via. During fabrication, the polyimide PCB is slotted into a custom aluminum holder (Fig. 1A) (Protolabs, Maple Plain, MN, USA) and secured with tape.

A custom interface PCB was designed to interface with either a 32 or 16-channel Omnetics connector (A79024-001 or A79040-001, Omnetics, Minneapolis, MN, USA) and four 10 cm-long wires (50.8  $\mu\text{m}$  diameter 35N LT, coated with polyimide to 60.9  $\mu\text{m}$ , Fort Wayne Metals, Fort Wayne, IN, USA). The Omnetics connector and four wires were soldered to the interface PCB and secured with 2-part quick curing epoxy. The other wire end, with 75  $\mu\text{m}$  uninsulated, was slotted into a gold-plated via in the polyimide PCB (Fig. 1B-1). Silver epoxy was applied to the junction of the PCB and wire and the adjoining pair of gold traces (Fig. 1B-2). Individual carbon fibers were placed in the silver epoxy between the paired gold traces (Fig. 1B-3). After the silver epoxy was cured, a layer of insulating epoxy (353ND-T, Epoxy Technology, Inc., Billerica, MA, USA) was applied over traces and wire junctions and cured (Fig. 1B-4).

A custom 3D-printed piece was attached to the aluminum holder to create a well around the CFSA for the silicone molding (Fig. 1C). Pulled glass capillaries shuttled the degassed medical grade silicone (A-103, Factor II, Lakeside, AZ, USA) into the 200  $\mu\text{m}$ -wide areas on either side of the polyimide PCB and across the sides between the fibers. The silicone was cured at 110  $^{\circ}\text{C}$  for 20 minutes and the 3D printed wall was removed. The device was coated with approximately 800 nm of parylene-C (Specialty Coating Systems, Inc., Indianapolis, IN, USA). The polyimide PCB, with attached silicone, fibers, and wires, was removed from the aluminum holder with forceps (Fig. 1D). Once removed, the carbon fibers

were trimmed to length (500–1100  $\mu\text{m}$  based on application) with microsurgical scissors prior to electrode tip processing (Fig. 1E).

### C. Sharpening of Carbon Fiber Electrode Tip

We adapted a heat-based sharpening method using a butane torch, seen in previous demonstrations of carbon fibers in long fiber bundles [33] or relatively long individuated fibers [36], to work with short individuated fibers (200–250  $\mu\text{m}$ ) suitable for dwelling within 300–500  $\mu\text{m}$ -diameter nerves. Our method uses the reflective properties of water to precisely align short fibers with the water's surface for sharpening while the body of the array is kept safely under water (Fig. 2).

Flex Arrays and CFSAs underwent a similar sharpening procedure using different holding mechanisms. The Flex Array was secured with putty to the base of a glass dish (Fig. 2A). The water level was adjusted with a pipette until the array was completely submerged. The small, lightweight nature of the CFSAs required it be held by nerve forceps (ASSI.NHF0.5, Accurate Surgical & Scientific Instruments Corp., Westbury, NY, USA) during sharpening (Fig. 2B). The tail of the CFSA was held at a 45 degree angle by forceps, which was secured to a stereotactic frame. The surface of the CFSA was parallel to the water surface with carbon fibers pointing up as it was lowered into the water until submerged.

An endoscopic camera (MS100, Teslong, Shenzhen, China) aligned outside the glass dish was used to view the carbon fibers. The camera was tilted up beneath the water level to visualize the reflection of the fibers on the underside of the water surface. The water level was adjusted until fibers appeared to touch the reflection on the underside of the water surface (Fig. 2A, B insets), at which point a microtorch (3 mm diameter flame, MT-51B, Master Appliance, Racine, WI, USA) was passed over the fibers for 10–20 s (Fig. 2C). Sharpened carbon fibers (SCFs) were confirmed by visual inspection. Multiple passes of the microtorch were occasionally necessary.

### D. Scanning Electron Microscopy (SEM) Imaging

Scanning electron microscopy (SEM) images were used to characterize SCFs. Images were collected in either a Nova Nanolab 200 DualBeam SEM (FEI, Hillsboro, OR, USA) or a MIRA3 SEM (Tescan Orsay Holding, Brno-Kohoutovice, Czech Republic). An accelerating voltage of 2 kV or 3 kV and a current of 0.21 nA or 24 pA was used on the Nova or MIRA3, respectively. Both SEMs used an Everhart-Thornley detector for high-vacuum secondary electron imaging. Arrays were mounted on standard SEM pin stub mounts using carbon tape and gold sputtered for 60–120 seconds.

### E. Electrochemical Deposition of Polymer Coating

To lower impedance, a solution of 0.01 M 3, 4-ethylenedioxythiophene (483028, Sigma-Aldrich, St. Louis, MO, USA) and 0.1 M sodium p-toluenesulfonate (152536, Sigma-Aldrich, St. Louis, MO, USA) was electrodeposited onto the exposed carbon of the SCFs by applying 600 pA/channel for 600 s to form poly(3,4-ethylene-dioxythiophene):sodium p-toluenesulfonate (PEDOT:pTS) [29], [34].

## F. Electrochemical Impedance Spectroscopy (EIS) and Cyclic Voltammetry (CV) Analysis

EIS and CV measurements were collected to characterize electrode fabrication steps and post-surgery viability. Three-electrode measurements were performed with a PGSTAT12 Autolab potentiostat (Metrohm / Eco Chemie, Utrecht, Netherlands) and vendor-supplied Nova software using the same setup and analysis methods described in Welle *et al.*, 2020 [35]. Fibers were rinsed in deionized water after measurement.

## G. Bend Testing of Silicone-Embedded Carbon Fibers

Carbon fibers were embedded in medical grade silicone to test their bending characteristics. Silicone was held in oval depressions milled into an aluminum baseplate (Protolabs, Maple Plain, MN, USA) and degassed in a vacuum chamber for 20 minutes at  $-0.09$  MPa. Eight bare carbon fibers at a  $152.4$   $\mu\text{m}$  pitch were aligned and submerged into silicone by  $300$ – $400$   $\mu\text{m}$ . After curing on a hotplate for 20 minutes at  $110$   $^{\circ}\text{C}$ , the silicone-CF testing devices were gently removed with forceps. The silicone surface of some devices was slightly curved, but this was deemed insignificant for our purposes. In a small number of experiments, CFSAs were tested to verify the amount of silicone needed above the edge of the polyimide PCB to exhibit the same properties as CFs embedded purely in silicone [38].

A  $0.75$  mm diameter glass capillary (M-235.5DD, PI, Auburn, MA, USA) attached to a linear actuator was repeatedly passed over the carbon fibers for bend testing. The glass capillary was  $40$ – $60$   $\mu\text{m}$  above the silicone surface and moved at a velocity of  $17.09$  mm/s and acceleration of  $4.88$  mm/s<sup>2</sup>. One pass was the movement of the glass capillary from one end of the line of carbon fibers to another in a single direction. The percent of broken fibers on each device was collected at some combination of the experimental increments of 200, 1k, 2k, 6k, 8k, 10k, 20k, 30k, 40k, and 50k passes.

## H. Animal Surgery

All animal procedures were approved by the University of Michigan Institutional Animal Care and Use Committee (PRO00009525). Electrophysiological recordings were collected from three locations in non-survival surgical procedures: rat CVN, feline DRG, and rat brain motor cortex. Prior to all surgeries, ground and reference wires (AGT05100, World Precision Instruments, Sarasota, FL, USA) were soldered to the interface PCB and the insulation was exposed up to 1 cm on the other end. The polyimide PCB tail was clamped by nerve forceps such that the fibers pointed away from the forceps toward down the cavity.

## I. Acute Rat CVN Surgery

The non-survival CVN procedures were performed on male Sprague-Dawley rats ( $0.36$ – $0.62$  kg, Charles River Laboratories, Wilmington, MA, USA), as detailed in Jiman *et al.*, 2020 ( $N = 22$  for companion study, +1 additional animal in current study), using Flex Arrays ( $150$ – $250$   $\mu\text{m}$  length SCFs). Isoflurane (Fluriso, VetOne, Boise, ID, USA) was used for anesthetic induction (5%) and maintenance (2–3%). Rats were placed on a heating pad and vitals were monitored. The CVN was accessed through a midline ventral cervical incision. Approximately 10 mm of CVN was isolated from the carotid artery and surrounding tissue. The CVN was lifted ( $\sim 2$  mm) on to a custom 3D-printed nerve-holder. The Flex Array was positioned over the elevated CVN using a 3-axis micromanipulator (KITE-R, World

Precision Instruments, Sarasota, FL, USA) secured to an optical breadboard. The ground wire for the Flex Array was inserted subcutaneously in the cervical area and the reference wire was placed in the tissue of the cervical cavity. An endoscopic camera was aligned at the edge of the nerve-holder to visualize the carbon fibers during insertion. The heating pad and dissection microscopy were disconnected to reduce electrical noise. The nerve was rinsed with saline (0.9% NaCl, Baxter International, Inc., Deerfield, IL, USA) and the Flex Array carbon fibers were lowered and inserted into the CVN.

#### J. Acute Feline DRG Surgery

Three adult, domestic, short-hair male felines (4.0–5.6 kg, 1.3–1.4 years, Marshall BioResources, North Rose, NY, USA) were used for the DRG experiments with Flex Arrays (150–250  $\mu\text{m}$  length SCFs). One feline (5.2 kg, 1.2 years) was used for the DRG experiment with a CFSA (375–475  $\mu\text{m}$  length SCFs). Flex Arrays were previously used in CVN experiments. The animals were anesthetized with an intramuscular injection of ketamine (6.6 mg/kg), butorphanol (0.66 mg/kg), and dexmedetomidine (0.011 mg/kg). Animals were intubated and maintained on isoflurane (0.5–4%) and vitals were monitored (respiratory rate, heart rate, end-tidal  $\text{CO}_2$ ,  $\text{O}_2$ , perfusion, temperature, and intra-arterial blood pressure). For fluid infusion and pressure monitoring, a 3.5 Fr dual-lumen catheter was inserted to the bladder through the urethra. A midline dorsal incision was made to expose the L7 to S3 vertebrae. A laminectomy was performed to access the S1–S2 DRG. After experimentation, animals were transitioned from isoflurane to intravenous alpha-chloralose (70 mg/kg induction and 20 mg/kg maintenance) for the remainder of the experiment. Buprenorphine was provided subcutaneously every 8 to 12 hours as analgesia.

The Flex Array or CFSA was held in place with a clamp or nerve forceps and manually lowered into the surgical site using a micromanipulator. The ground wire was placed subcutaneously at a distant location and the reference wire was placed near the spinal nerve. Insertion into the S1 or S2 DRG was visualized with an endoscopic camera. After insertion, impedances were recorded at 1 kHz. Brushing trails with the Flex Arrays consisted of brushing of the scrotum with a cotton-tip applicator for 10 seconds following a period of no brushing for 10 seconds, for 60 seconds total. For bladder trials with the Flex Array, saline was infused into an empty bladder at 2 mL/min until either an elevated bladder pressure occurred or urine leaking was observed. CFSA trials consisted of exploratory perineal brushing and baseline recordings.

#### K. Acute Rat Cortical Surgery

Four adult male Sprague Dawley rats (0.3–0.4 kg, Charles Rivers Laboratories, Wilmington, MA, USA) were used for the acute cortical experiments with CFSA (75–1075  $\mu\text{m}$  length SCFs). Two animals were excluded due to surgical complications unrelated to device features. Animals received carprofen (5 mg/kg) and were anesthetized with ketamine/xylazine (90/10 mg/kg) and maintained with ketamine (30 mg/kg). Rat vitals were monitored during surgery. Surgical preparation is detailed in Welle *et al.*, 2020. A 2.5 mm by 2.5 mm craniotomy was drilled over the right hemisphere motor cortex. The CFSA was attached to a stereotactic manipulator and aligned over the craniotomy along the anterior-posterior axis. The ground and reference wires were wound around the grounding bone

screw. A dural slit was made in the center of the craniotomy. The CFSA was manually lowered and the fibers were driven into the brain until the final target depth (0.775–1.180 mm) in layer V was reached [40].

#### L. Tip Electrophysiology Recording

Neural recordings from the rat CVN and feline DRG were collected using a Grapevine Neural Interface Processor (Ripple LLC, Salt Lake City, UT, USA). Electrophysiological signals were recorded at a sampling rate of 30 kHz. Impedances were measured during rat CVN experiments at 1 kHz in saline before the procedure and in the nerve immediately after insertion. Impedances were measured during the majority of feline DRG experiments at 1 kHz immediately after insertion. At least 5 minutes, 10 minutes, or 1 minute of recordings were obtained for the rat CVN, feline DRG bladder experiments, and feline DRG brushing experiments.

Brain electrophysiology recordings were collected using a ZC16 headstage, RA16PA pre-amplifier, and RX5 Pentusa base station (Tucker-Davis Technologies, Alachua, FL, USA). Data was sampled at a rate of 25 kHz, high-pass filtered at 2.2 Hz, and anti-alias filtered at 7.5 kHz. Each recording session lasted at least 3 minutes.

#### M. Analysis of Neural Recordings

Principle component analysis of neural recordings was conducted in Offline Sorter (OFS, Plexon, Dallas, TX, USA) to isolate neural clusters. The electrophysiology signals were filtered with a band-pass filter at 300–10,000 Hz and manually thresholded below the noise floor. A trained operator manually identified neural clusters from the CVN and DRG recordings. Clusters from the brain were identified in OFS using the semi-automated method described in Welle *et al.*, 2020. Sorted clusters were identified by unique amplitude, waveform shape, inter-spike interval, and response to physiological signals, such as breathing rate. MATLAB was used to analyze the sorted clusters. Firing rates of bladder clusters were calculated with a bin duration of 1 second and correlated to bladder pressure until the maximum bladder pressure [41]. The signal-to-noise ratio (SNR) was calculated using the mean peak-to-peak amplitude ( $V_{pp}$ ) of a sorted cluster and the standard deviation of at least 500 ms of noise from the respective recording [ $SNR = V_{pp}/(2 * \text{standard deviation of noise})$ ]. When appropriate, values are presented as mean  $\pm$  standard deviation (SD).

### III. RESULTS

#### A. Analysis of Sharpened Carbon Fibers

A blowtorch method for sharpening  $<500 \mu\text{m}$  linear carbon fiber arrays was developed to facilitate consistent insertion success in peripheral targets (Fig. 2A, B). Example SCFs attached to Flex Arrays are shown in Fig. 2C. Prior to blowtorching, carbon fibers were manually cut using microsurgical scissors to roughly  $200 \mu\text{m}$  in length. After blowtorching, SEM analysis confirmed the average length of SCFs as  $223.7 \pm 18.9 \mu\text{m}$  ( $N = 32$  fibers). SCFs exhibited an average tip angle of  $72.3 \pm 33.5$  degrees with a  $146.8 \pm 17.7 \mu\text{m}$  length of carbon exposed from parylene-C insulation, constituting an active recording site of  $2734.5$



$\pm 402.5 \mu\text{m}^2$  surface area (Fig. 2C). The parylene-C transition between the exposed and insulated carbon appeared smooth on all imaged fibers (Fig. 2C inset).

After sharpening, the electrodes were coated PEDOT:pTS [34]. The SCFs coated with PEDOT:pTS showed a large shift in impedance magnitude at lower frequencies (Fig. 3A). SCFs of 200  $\mu\text{m}$  length without PEDOT:pTS coating exhibited an average 1 kHz impedance ( $|Z|_{1\text{kHz}}$ ) of  $334.8 \pm 243.2 \text{ k}\Omega$  and a median  $|Z|_{1\text{kHz}}$  of 298.6 k $\Omega$  (N = 574 fibers). Once coated with PEDOT:pTS, SCFs exhibited an average  $|Z|_{1\text{kHz}}$  of  $32.3 \pm 55.7 \text{ k}\Omega$  and a median  $|Z|_{1\text{kHz}}$  of 12.4 k $\Omega$  (N = 565 fibers) (Fig. 3B). Therefore, coating the active SCF recording site with PEDOT:pTS contributed to a 90% decrease in average  $|Z|_{1\text{kHz}}$  (Fig. 3B). Correspondingly, the cathodal charge storage capacity of SCFs increased from  $15.2 \pm 5.4 \mu\text{C}/\text{cm}^2$  to  $255.0 \pm 148.6 \mu\text{C}/\text{cm}^2$  (N = 64 fibers), calculated at a sweep rate of 1 V/s, after PEDOT:pTS deposition (Fig. 3C).

## B. Durability Testing of Silicone-Embedded Carbon Fibers

We harnessed the intrinsic compliance of carbon fibers through partial embedding in medical grade silicone [29], [38] to relieve strain at the SCF-polyimide PCB junction, therefore minimizing the eventual breakage seen on Flex Arrays after repeated insertions. Bend tests were conducted on silicone-embedded carbon fibers, with and without attachment to an embedded polyimide PCB, using a 0.75 mm diameter glass capillary (Fig. 4A, C, Supplemental Video 1, Supplemental Video 2). On average, carbon fibers deflected  $50.9 \pm 6.2$  degrees from the vertical position (N = 23 fibers, 3 devices), representatively shown in Fig. 4B. The maximum measured fiber deflection from vertical without fracture was 71.6 degrees. We observed that an average of 93.8% fibers (N = 58/62) did not break after 2,000 bends (passes of the capillary) during continuous fatigue testing (Fig. 4D). After 50,000 passes, 87.5% of fibers remained unbroken (N = 14/16). This durability was similarly observed on carbon fibers embedded in at least 150  $\mu\text{m}$  of silicone when attached to an embedded polyimide PCB Woods *et al.*, 2020, Supplemental Video 2).

## C. Acute Electrophysiology Recordings From Rat CVN

We tested the ability of SCFs to insert into and record from small diameter (300–500  $\mu\text{m}$ ) rat CVN. Six Flex Arrays with SCFs of 200–250  $\mu\text{m}$  length, as represented in Fig. 1C, were inserted into the left CVN of 22 Sprague-Dawley rats (Fig. 5E, Supplemental Video 3). Detailed characterization of the population recordings is presented in a companion study by Jiman *et al.* 2020 [39]. In all experiments, we visually observed successful insertion of all SCFs into the CVN after an average of 2.3 insertion attempts. The functional SCFs (defined as  $|Z|_{1\text{kHz}} < 1 \text{ M}\Omega$ ) had an average  $|Z|_{1\text{kHz}}$  of  $70.8 \pm 81.9 \text{ k}\Omega$  once inserted into the CVN (N = 326 fibers). Neural activity was recorded on 51.2% of the functional SCFs. Manual sorting and a mixture of Gaussians sorting methods were applied in principal component space to classify neural activity into clusters of distinct bipolar waveform shapes. Across the 326 functional SCFs, 174 sorted neural clusters were detected. The neural clusters had a mean  $V_{\text{pp}}$  of  $30.7 \pm 11.43 \mu\text{V}$  and a mean SNR of  $3.52 \pm 1.0$ . We observed that 19.8% of functional SCFs recorded neural clusters with SNRs > 4. The maximum mean  $V_{\text{pp}}$  was found to be 91.72  $\mu\text{V}$ .

Representative electrophysiological recordings of spontaneous CVN activity is shown in Fig. 5. Sixteen SCFs were determined functional and had an average  $|Z|_{1\text{kHz}}$  of  $25.3 \pm 10.9$  k $\Omega$  after insertion into the CVN. Sorting analysis identified neural clusters on 3 of 16 functional SCFs in this example experiment. Neural data from 2 functional SCFs are shown in Fig. 5A and C. The corresponding neural cluster from each functional SCF had a mean  $V_{pp}$  of  $139.9 \pm 26.4$   $\mu\text{V}$  and  $122.8 \pm 24.3$   $\mu\text{V}$  (Fig. 5B, D). Across all 3 SCFs, we found that the waveform  $V_{pp}$  of clusters ranged from 18.5  $\mu\text{V}$  to 108.5  $\mu\text{V}$ . The sorted neural clusters had a mean  $V_{pp}$  of  $41.8 \pm 6.8$   $\mu\text{V}$  and an average median  $V_{pp}$  of 41.0  $\mu\text{V}$ . Clusters from this representative experiment had a mean SNR of  $4.1 \pm 0.08$ .

#### D. Acute Electrophysiology Recordings From Feline DRG

We sought to discover whether it is possible to insert SCFs of short length (150–250  $\mu\text{m}$ ) into feline DRG with minimal external force during insertion. We inserted 16-channel Flex Arrays with 150–250  $\mu\text{m}$  length SCFs into the S1 DRG of 3 felines (Fig. 7A, B) and a 4-channel CFSA with 375–475  $\mu\text{m}$  length SCFs into the S2 DRG of 1 feline (Fig. 6A, B). In each experiment, the array was manually lowered with a micromanipulator until SCFs were visually inserted in tissue. Functional SCFs ( $|Z|_{1\text{kHz}} < 1$  M $\Omega$ ) had an average  $|Z|_{1\text{kHz}}$  of  $26.9 \pm 7.4$  k $\Omega$  in the DRG immediately after insertion ( $N = 30$  fibers). Despite the large recording surface area, neural clusters were observed on 32 of 52 total inserted SCFs ( $N = 4$  felines; 3 Flex Arrays; 1 CFSA), and 27 of 30 functional ( $|Z|_{1\text{kHz}} < 100$  k $\Omega$ ) SCFs ( $N = 3$  felines; 2 Flex Arrays; 1 CFSA). Impedance data was not recorded on one feline and excluded from the functional SCF count. Our offline sorting analysis of recorded neural activity identified 73 neural clusters across all feline experiments with an average of  $1.8 \pm 0.9$  clusters per SCF. Clusters were classified as either spontaneous or driven. Spontaneous neural activity was sorted into clusters associated with breathing (breathing clusters), clusters unlinked to obvious physiological signal (spontaneous clusters, Fig. 6C), and clusters containing multiple units (multi-unit clusters). Driven clusters responded to the experimental variables of perineal or scrotal brushing (brushing clusters, Fig. 7C, D) or saline-infusion of the bladder (bladder clusters, Fig. 7E, F). Across all experiments, we classified 16.2% of clusters as breathing, 43.2% as spontaneous, and 16.2% as multi-unit, 14.9% as brushing, and 9.5% as bladder clusters.

Breathing clusters depicted rising and falling amplitudes, in addition to bursting patterns. We believe the observed changes in amplitude were likely due to micromotion shifts in SCF position with respect to the neuron as the animal's body shifted slightly with each breath. The  $V_{pp}$  of breathing clusters ranged from 41.4  $\mu\text{V}$  to 186.7  $\mu\text{V}$ , with a mean  $V_{pp}$  of  $84.4 \pm 16.8$   $\mu\text{V}$  and a mean SNR of  $7.0 \pm 3.7$  ( $N = 12$  clusters; 3 Flex Arrays). Spontaneous clusters did not obviously track with breathing or other physiological signals. The mean  $V_{pp}$  of spontaneous clusters was  $115.9 \pm 16.6$   $\mu\text{V}$  and a mean SNR of  $7.9 \pm 6.0$  ( $N = 32$  clusters; 3 Flex Arrays; 1 CFSA). Fig. 6C shows an example spontaneous cluster recorded from the CFSA with a mean  $V_{pp}$  of  $298.8 \pm 15.5$   $\mu\text{V}$  and SNR of 6.5. Multi-unit clusters contained clear neural activity, but we were unable to differentiate spontaneous clusters. Multi-unit clusters had a mean  $V_{pp}$  of  $34.2 \pm 6.3$   $\mu\text{V}$  and a mean SNR of  $4.7 \pm 1.2$  ( $N = 12$  clusters; 1 Flex Array).

To further verify that spikes were neural in origin, we recorded neural activity in response to cutaneous brushing and bladder filling. In 2 of 3 experiments with Flex Arrays recording from the S1 DRG, we recorded neural activity corresponding to the cutaneous response to scrotal brushing. We observed 10 clusters on 8 SCFs with bursting activity during the 10 second brushing intervals (Fig. 7C). The corresponding brushing cluster, shown in Fig. 7D, has a mean  $V_{pp}$  of  $108.7 \pm 11.0 \mu V$  and SNR of 6.0. The mean  $V_{pp}$  of all brushing clusters was  $152.4 \pm 13.5 \mu V$  and the mean SNR was  $7.1 \pm 4.5$  ( $N = 10$  clusters; 2 Flex Arrays). We also recorded a single brushing cluster in response to perineal brushing on a CFSA in one experiment. The mean  $V_{pp}$  of the cluster was  $219.5 \pm 54.1 \mu V$  and the mean SNR was 18.9 ( $N = 1$  cluster; 1 CFSA).

We also observed neural activity that contained physiologically-relevant signals of bladder pressure in response to bladder filling. Across all experiments, the firing rates of 7 neural clusters were found to correlate with bladder pressure during the bladder filling procedure. A representative bladder cluster is shown in Fig. 7E and 7F. Correlation coefficients between bladder pressure and firing rate were calculated for each bladder cluster. The correlation coefficients were between 0.23 and 0.82, with a median of 0.70. The mean correlation coefficient of the 7 clusters with their respective bladder pressure was  $0.61 \pm 0.21$ . The  $V_{pp}$  of the bladder clusters were between  $32.1 \mu V$  and  $190.4 \mu V$ , with a mean  $V_{pp}$  of  $86.8 \pm 14.1 \mu V$  and a mean SNR of  $10.3 \pm 6.3$  ( $N = 7$  clusters, 3 Flex Arrays).

We observed that several clusters recorded on the Flex Array appeared on multiple adjacent SCFs. These units fulfilled our metrics for being a sortable cluster in terms of amplitude, signal width, and inter-spike-interval, but appeared concurrently on multiple consecutive channels. In one instance, a breathing cluster was seen on four SCFs in a  $2 \times 2$  geometry on a Flex Array, spanning a distance of  $141 \mu m$  between diagonal SCFs.

### E. Acute Electrophysiology Recordings From Rat Cortex

SCFs on CFSA of length  $750 \mu m$  to  $1075 \mu m$  were found to self-insert into dura-free brain tissue from depths of  $775 \mu m$  to  $1180 \mu m$  (Fig. 8B, Supplemental Video 4). In total, 17 sortable single units were recorded from 6 SCFs across 3 devices during 7 independent insertions into the brain (Fig. 8A). The mean  $V_{pp}$  was found to decrease as cortical depth increased (Fig. 8 table). The overall mean  $V_{pp}$  was  $80.7 \pm 27.5 \mu V$  and the largest recorded unit amplitude was  $126 \mu V$ .

## IV. DISCUSSION

Here, we demonstrate the capabilities of SCF arrays for interfacing with the central and peripheral nervous systems. This work represents, to our knowledge, the first stiff, penetrating, sub-cellular electrode array with a durable, stress-relieving backplane.

SCFs easily penetrate into multiple neural structures of varying stiffness and geometry. Initial insertion attempts in the small diameter ( $300\text{--}500 \mu m$ ) rat CVN with conventional blunt-tipped carbon fiber electrodes [35] yielded unsuccessful insertion, and surgeons often resorted to slitting the epineurium. However, short ( $<250 \mu m$ ) SCFs consistently inserted into the CVN. Successful insertion was also achieved in the feline DRG, which has a thick

epineurium layer of 50–100  $\mu\text{m}$  [42], [43], without the assistance of the pneumatic inserter [15]. In the brain, blunt-tipped carbon fibers previously relied upon insertion assistors, such as temporary stiffening agents or a silicon backbone, to insert into dura-free brain at lengths greater than 500  $\mu\text{m}$  [34], [35]. Despite a 6.8  $\mu\text{m}$  diameter, SCFs inserted without assistance into brain at lengths of 1075  $\mu\text{m}$ .

Silicone-embedded carbon fibers survived repeated bending, indicating a potential for robust surgical handling unlike what is often seen for silicon, glass-encapsulated, or other metal penetrating electrodes [38]. Slight instrument adjustments in the surgical space often translated into large movements at the Flex Array–nerve interface, extreme enough for total carbon fiber breakage if not mitigated by an experienced surgeon. Biological motion surrounding peripheral nerve interfaces is likely more significant to intraneural electrode breakage than brain motion is for chronic penetrating brain electrodes. This array demonstrates a capability to withstand the long-term fatigue that a peripheral interface is likely to experience by harnessing the intrinsic compliance of carbon fibers.

The blowtorch sharpening of carbon fibers resulted in a low-impedance electrode well within relevant electrophysiology recording range [44]. While SCFs had a 10.6 times larger surface area than laser cut carbon fibers (2735  $\mu\text{m}^2$ , 257  $\mu\text{m}^2$ , respectively) from Welle *et al.*, 2020, blowtorching resulted in only a 1.7 times increase in 1 kHz impedance (32 k $\Omega$ , 19 k $\Omega$ , respectively). Despite the low 1 kHz impedance, it was unclear if the larger surface area would affect recording ability. We looked to similar devices to indicate the impact of a large surface area, such as the carbon nanotube yarn electrode. The yarn electrode recorded neural clusters from small autonomic nerves with electrodes exhibiting both a larger diameter (10–20  $\mu\text{m}$ ) and larger exposed length (200–500  $\mu\text{m}$ ), resulting in a larger surface area electrode [28], [32].

In fact, we recorded clear neural clusters with SCFs in rat CVN, feline DRG, and rat cortex. The amplitudes of neural clusters recorded from small, myelinated A fibers and unmyelinated C fibers within the rat CVN were predictably often lower than those recorded from cell bodies and axons within the feline DRG or rat cortex. The mean amplitudes of spontaneous neural clusters from the rat CVN, feline DRG, and rat cortex were 41.8  $\mu\text{V}$ , 115.9  $\mu\text{V}$ , and 80.7  $\mu\text{V}$ , respectively. In addition to spontaneous activity, we recorded neural activity from the feline DRG corresponding to cutaneous brushing (152.4  $\pm$  13.5  $\mu\text{V}$ ) and bladder pressure (86.8  $\pm$  14.1  $\mu\text{V}$ ). The bladder clusters correlated to bladder pressure with a mean correlation coefficient of 0.61. This encouraging preliminary work, although not exhaustive, is the first example of carbon fiber electrode recordings in feline DRG, to our knowledge.

Novel, miniature, and implantable devices are required as bioelectric medicines advances in precise deciphering and monitoring of neural signals [1], [7]. The neural interface presented here could benefit a broad range of medical applications, such as control of hypertension [45], or monitoring of the digestive system [46] or cytokines [47]. Recording high quality, single units may improve the precision of these medical applications, especially with the CVN [48]. Due to their small diameter, carbon electrodes are more likely to land closer to regions of high electric field potential. This may lower stimulation thresholds below

those used by other larger intraneural interfaces [49]. Promising preliminary stimulation results in other studies [36] enhance the prospect for this array in clinical peripheral nerve applications.

The array presented here uses stable, biocompatible materials appropriate for clinical use, such as carbon fiber [50] and medical-grade elastomer. Metal coatings traditionally used in medical devices, such as platinum iridium or iridium oxide [51], [52], could replace PEDOT:pTS to increase long-term stability. The large surface area of bare carbon electrode is favorable for neurotransmitter sensing [37], [53]. With this larger surface area, we recorded neural units. However, the smaller amplitude of neural clusters from the rat cortex recorded here as compared to our previous studies may be due to the larger surface area [35], [44]. A smaller surface area electrode might be achieved by electrochemical etching [54].

Additionally, this array's architecture may enable interfacing with difficult to access locations or small autonomic structures [7]. The ability to insert individuated, sharpened fibers as an array without assistance may enable larger channel count arrays of small stiff electrodes [55], [56]. The ability to penetrate DRG suggests that these probes may be useful for other vertebrate ganglia, such as the nodose ganglia [57], [58], and invertebrate ganglia, such as those in *Aplysia* [59]. The mechanical durability in a soft substrate makes these arrays ideal candidates for long-term studies in large animal models [60], [61]. Additionally, carbon fiber and carbon composite electrodes previously demonstrated a minimal chronic scarring response in brain [29], [37] and nerve [28].

There are, however, difficulties in deploying these devices for large-scale use. The manual fabrication of the carbon fiber arrays is a time-intensive process for an experienced fabrication technician. The application of silicone is limited by the small movements necessary to place the silicone in the wells and not on the fibers. The polyimide PCB and holder would likely require modifications to expand beyond four channels. While whole arrays can be sharpened at once – an improvement from the previous individual lasering technique [35] – the amount of exposed carbon cannot yet be pre-determined. A chronic attachment method is still needed, such as suturing or Rose Bengal photochemical tissue bonding [62]. Future studies will need to investigate the chronic histological response of carbon fibers in peripheral structures.

## V. CONCLUSION

This work examines novel mechanical improvements to carbon fiber electrode arrays for interfacing with the nervous systems. SCFs can penetrate into stiff substrates, such as feline DRG and rat CVN, and reach deeper layers of the rat cortex, verifying their use with various recording targets despite their small diameter. The carbon fiber arrays embedded in silicone demonstrated durability beneficial for surgical handling and chronic peripheral nerve interfacing. Our electrophysiology recordings from the DRG were the first reported recordings with carbon fiber electrodes, to the best of our knowledge. The ease of insertion and durability to movement make these arrays potentially viable candidates for future chronic *in vivo* use.

## Supplementary Material

Refer to Web version on PubMed Central for supplementary material.

## Acknowledgment

The authors thank Stephen Kemp for experimental guidance, Lauren Zimmerman for initial testing, Eric Kennedy for surgical preparation, David Ratze for experimental assistance, and Hao Shen and Hope Thayer for fabrication assistance. They also thank the staff at the Michigan Center for Materials Characterization and the Lurie Nanofabrication Facility.

This work was supported in part by the National Institutes of Health (NIH) Stimulating Peripheral Activity to Relieve Conditions (SPARC) Program under Award 1OT2OD024907, in part by the National Science Foundation (NSF) under Award 1707316, in part by the University of Michigan College of Engineering, and in part by the NSF under Grant DMR-0320740 and Grant DMR-1625671.

## REFERENCES

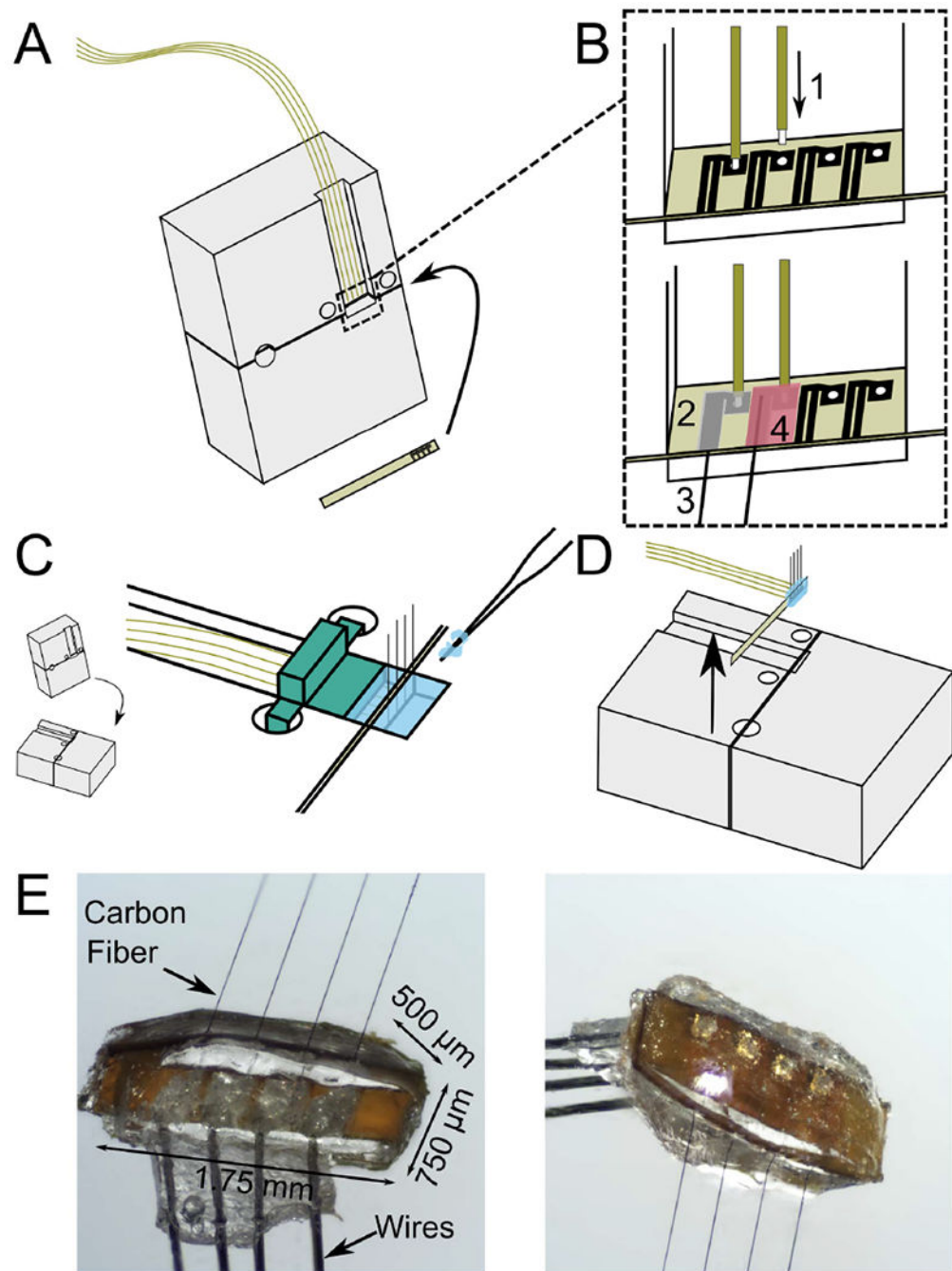
- [1]. Birmingham Ket al., “Bioelectronic medicines: A research roadmap,” *Nature Rev. Drug Discovery*, vol. 13, no. 6, pp. 399–400, 6. 2014. [PubMed: 24875080]
- [2]. Schmidt RA et al., “Sacral nerve stimulation for treatment of refractory urinary urge incontinence,” *J. Urol*, vol. 4, pp. 352–357, 8. 1999.
- [3]. DeGiorgio Cet al., “Vagus nerve stimulation for epilepsy: Randomized comparison of three stimulation paradigms,” *Neurology*, vol. 65, no. 2, pp. 317–319, 7. 2005. [PubMed: 16043810]
- [4]. Deuschl Get al., “A randomized trial of deep-brain stimulation for Parkinson’s disease,” *N. Engl. J. Med*, vol. 355, no. 9, pp. 896–908, 2006. [PubMed: 16943402]
- [5]. Andersson U and Tracey KJ, “Neural reflexes in inflammation and immunity,” *J. Experim. Med*, vol. 209, no. 6, pp. 1057–1068, 6. 2012.
- [6]. Müller HHO, Moeller S, Lücke C, Lam AP, Braun N, and Philipsen A, “Vagus nerve stimulation (VNS) and other augmentation strategies for therapy-resistant depression (TRD): Review of the evidence and clinical advice for use,” *Frontiers Neurosci.*, vol. 12, p. 239, 4. 2018.
- [7]. Horn CC, Ardell JL, and Fisher LE, “Electroceutical targeting of the autonomic nervous system,” *Physiology*, vol. 34, no. 2, pp. 150–162, 3. 2019. [PubMed: 30724129]
- [8]. Famm K, Litt B, Tracey KJ, Boyden ES, and Slaoui M, “A jump-start for electroceuticals,” *Nature*, vol. 496, no. 7444, pp. 159–161, 4. 2013. [PubMed: 23579662]
- [9]. Janssen DA, Martens FM, de Wall LL, van Breda HM, and Heesakkers JP, “Clinical utility of neurostimulation devices in the treatment of overactive bladder: Current perspectives,” *Med. Devices, Evidence Res*, vol. 10, pp. 109–122, 6. 2017.
- [10]. Charkhkar H, Christie BP, Pinault GJ, Tyler DJ, and Triolo RJ, “A translational framework for peripheral nerve stimulating electrodes: Reviewing the journey from concept to clinic,” *J. Neurosci. Methods*, vol. 328, 12. 2019, Art. no. 108414.
- [11]. Navarro X, Krueger TB, Lago N, Micera S, Stieglitz T, and Dario P, “A critical review of interfaces with the peripheral nervous system for the control of neuroprostheses and hybrid bionic systems,” *J. Peripheral Nervous Syst*, vol. 10, no. 3, pp. 229–258, 9. 2005.
- [12]. Panebianco M, Rigby A, Weston J, and Marson AG, “Vagus nerve stimulation for partial seizures,” *Cochrane Database Syst. Rev*, vol. CD002896, pp. 1–39, 4. 2015.
- [13]. Larson CE and Meng E, “A review for the peripheral nerve interface designer,” *J. Neurosci. Methods*, vol. 332, 2. 2020, Art. no. 108523.
- [14]. Patil AC and Thakor NV, “Implantable neurotechnologies: A review of micro- and nanoelectrodes for neural recording,” *Med. Biol. Eng. Comput*, vol. 54, no. 1, pp. 23–44, 1. 2016. [PubMed: 26753777]
- [15]. Branner A, Stein RB, and Normann RA, “Selective stimulation of cat sciatic nerve using an array of varying-length microelectrodes,” *J. Neurophysiol*, vol. 85, no. 4, pp. 1585–1594, 4. 2001. [PubMed: 11287482]

- [16]. Wark HACet al., "A new high-density (25 electrodes/mm<sup>2</sup>) penetrating microelectrode array for recording and stimulating sub-millimeter neuroanatomical structures," *J. Neural Eng.*, vol. 10, no. 4, 8. 2013, Art. no. 045003.
- [17]. Boretius Tet al., "A transverse intrafascicular multichannel electrode (TIME) to interface with the peripheral nerve," *Biosensors Bioelectron.*, vol. 26, no. 1, pp. 62–69, 9. 2010.
- [18]. Badia J, Boretius T, Andreu D, Azevedo-Coste C, Stieglitz T, and Navarro X, "Comparative analysis of transverse intrafascicular multichannel, longitudinal intrafascicular and multipolar cuff electrodes for the selective stimulation of nerve fascicles," *J. Neural Eng.*, vol. 8, no. 3, 6. 2011, Art. no. 036023.
- [19]. Lago N, Yoshida K, Koch KP, and Navarro X, "Assessment of biocompatibility of chronically implanted polyimide and platinum intrafascicular electrodes," *IEEE Trans. Biomed. Eng.*, vol. 54, no. 2, pp. 281–290, 2. 2007. [PubMed: 17278585]
- [20]. del Valle J and Navarro X, *Interfaces With the Peripheral Nerve for the Control of Neuroprostheses*, vol. 109. Amsterdam, The Netherlands: Elsevier, 2013.
- [21]. Page DMet al., "Motor control and sensory feedback enhance prosthesis embodiment and reduce phantom pain after long-term hand amputation," *Frontiers Hum. Neurosci.*, vol. 12, p. 352, 9. 2018.
- [22]. Davis TSet al., "Restoring motor control and sensory feedback in people with upper extremity amputations using arrays of 96 microelectrodes implanted in the median and ulnar nerves," *J. Neural Eng.*, vol. 13, no. 3, 6. 2016, Art. no. 036001.
- [23]. Straka M, Shafer B, Vasudevan S, Welle C, and Rieth L, "Characterizing longitudinal changes in the impedance spectra of *in-vivo* peripheral nerve electrodes," *Micromachines*, vol. 9, no. 11, p. 587, 11. 2018.
- [24]. Grill WM, Norman SE, and Bellamkonda RV, "Implanted neural interfaces: Biochallenges and engineered solutions," *Annu. Rev. Biomed. Eng.*, vol. 11, no. 1, pp. 1–24, 8. 2009. [PubMed: 19400710]
- [25]. Christensen MB, Pearce SM, Ledbetter NM, Warren DJ, Clark GA, and Tresco PA, "The foreign body response to the utah slant electrode array in the cat sciatic nerve," *Acta Biomaterialia*, vol. 10, no. 11, pp. 4650–4660, 11. 2014. [PubMed: 25042798]
- [26]. Kolarcik CLet al., "Host tissue response to floating microelectrode arrays chronically implanted in the feline spinal nerve," *J. Neural Eng.*, vol. 17, no. 4, 7. 2020, Art. no. 046012.
- [27]. Liu Jet al., "Syringe-injectable electronics," *Nat. Nanotechnol.*, vol. 10, no. 7, pp. 629–635, 2015. [PubMed: 26053995]
- [28]. McCallum GAet al., "Chronic interfacing with the autonomic nervous system using carbon nanotube (CNT) yarn electrodes," *Sci. Rep.*, vol. 7, no. 1, 12. 2017, Art. no. 11723.
- [29]. Y. Kozai TDet al., "Ultrasml implantable composite microelectrodes with bioactive surfaces for chronic neural interfaces," *Nature Mater.*, vol. 11, no. 12, pp. 1065–1073, 12. 2012. [PubMed: 23142839]
- [30]. Patel PRet al., "Chronic *in vivo* stability assessment of carbon fiber microelectrode arrays," *J. Neural Eng.*, vol. 13, no. 6, 2016, Art. no. 066002.
- [31]. Skousen JL, Merriam SME, Srivannavit O, Perlin G, Wise KD, and Tresco PA, "Reducing surface area while maintaining implant penetrating profile lowers the brain foreign body response to chronically implanted planar silicon microelectrode arrays," in *Prog. Brain Research*, vol. 194, Schouenborg J, Garwicz M, and Danielsen N, Eds. Amsterdam, The Netherlands: Elsevier, 2011, pp. 167–180. [PubMed: 21867802]
- [32]. Marmarstein JT, McCallum GA, and Durand DM, "Direct measurement of vagal tone in rats does not show correlation to HRV," *Sci. Rep.*, vol. 11, no. 1, 12. 2021, Art. no. 1210.
- [33]. Guitchounts G, Markowitz JE, Liberti WA, and Gardner TJ, "A carbon-fiber electrode array for long-term neural recording," *J. Neural Eng.*, vol. 10, no. 4, 8. 2013, Art. no. 046016.
- [34]. Patel PRet al., "Insertion of linear 8.4  $\mu\text{m}$  diameter 16 channel carbon fiber electrode arrays for single unit recordings," *J. Neural Eng.*, vol. 12, no. 4, 2015, Art. no. 046009.
- [35]. Welle EJet al., "Ultra-small carbon fiber electrode recording site optimization and improved *in vivo* chronic recording yield," *J. Neural Eng.*, vol. 17, no. 2, 4. 2020, Art. no. 026037.

- [36]. Gillis WF et al., “Carbon fiber on polyimide ultra-microelectrodes,” *J. Neural Eng*, vol. 15, no. 1, 2. 2018, Art. no. 016010.
- [37]. Patel P et al., “High density carbon fiber arrays for chronic electrophysiology, fast scan cyclic voltammetry, and correlative anatomy,” *J. Neural Eng*, vol. 17, no. 5, 10. 2020, Art. no. 056029.
- [38]. Woods JE, Welle EJ, Chen L, Richie JM, Patel PR, and Chestek CA, “Bending properties of materials for peripheral nerve interfaces,” in *Proc. IEEE 15th Int. Conf. Nano/Micro Eng. Mol. Syst. (NEMS)*, 9. 2020, pp. 407–412.
- [39]. Jiman AA et al., “Multi-channel intraneural vagus nerve recordings with a novel high-density carbon fiber microelectrode array,” *Sci. Rep*, vol. 10, no. 1, 12. 2020, Art. no. 15501.
- [40]. Skoglund T, “The existence of a layer IV in the rat motor cortex,” *Cerebral Cortex*, vol. 7, no. 2, pp. 178–180, 3. 1997. [PubMed: 9087825]
- [41]. Ouyang Z, Sperry ZJ, Barrera ND, and Bruns TM, “Real-time bladder pressure estimation for closed-loop control in a detrusor overactivity model,” *IEEE Trans. Neural Syst. Rehabil. Eng*, vol. 27, no. 6, pp. 1209–1216, 6. 2019. [PubMed: 31021771]
- [42]. Sperry Z et al., “Flexible microelectrode array for interfacing with the surface of neural ganglia,” *J. Neural Eng*, vol. 15, no. 3, 6. 2018, Art. no. 036027.
- [43]. Ostrowski AK, Sperry ZJ, Kulik G, and Bruns TM, “Quantitative models of feline lumbosacral dorsal root ganglia neuronal cell density,” *J. Neurosci. Methods*, vol. 290, pp. 116–124, 10. 2017. [PubMed: 28739165]
- [44]. Moffitt MA and McIntyre CC, “Model-based analysis of cortical recording with silicon microelectrodes,” *Clin. Neurophysiol*, vol. 116, no. 9, pp. 2240–2250, 9. 2005. [PubMed: 16055377]
- [45]. Ntiloudi D, Zanos S, Gatzoulis MA, Karvounis H, and Giannakoulas G, “How to evaluate patients with congenital heart disease-related pulmonary arterial hypertension,” *Expert Rev. Cardiovascular Therapy*, vol. 17, no. 1, pp. 11–18, 1. 2019. [PubMed: 30457398]
- [46]. Panda B et al., “SPARC: Wireless, continuous monitoring of bowel state and function,” *FASEB J*, vol. 34, no. S1, p. 1, 4. 2020.
- [47]. Zanos T et al., “Identification of cytokine-specific sensory neural signals by decoding murine vagus nerve activity,” *Proc. Nat. Acad. Sci. USA*, vol. 115, no. 21, pp. E4843–E4852, 5. 2018. [PubMed: 29735654]
- [48]. Settell M et al., “SPARC: A road map for vagus nerve stimulation: Evidence of vagotomy in a swine model,” *FASEB J*, vol. 34, no. S1, p. 1, 4. 2020.
- [49]. Furniturewalla A, Rustogi P, Patrick E, and Judy JW, “Modeling the recording of intraneural action potentials with microelectrodes using FEM and point-source methods,” in *Proc. 9th Int. IEEE/EMBS Conf. Neural Eng. (NER)*, 3. 2019, pp. 1191–1194.
- [50]. Pusch J and Wohlmann B, “Carbon Fibers,” in *Proc. Inorganic Compos. Fibers*, 2018, pp. 31–51.
- [51]. Cogan SF, “Neural stimulation and recording electrodes,” *Annu. Rev. Biomed. Eng*, vol. 10, no. 1, pp. 275–309, 8. 2008. [PubMed: 18429704]
- [52]. Cassar I et al., “Electrodeposited platinum-iridium coating improves in vivo recording performance of chronically implanted microelectrode arrays,” *Biomaterials*, vol. 205, pp. 120–132, 6. 2019. [PubMed: 30925400]
- [53]. Schwerdt H et al., “Long-term dopamine neurochemical monitoring in primates,” *Proc. Nat. Acad. Sci. USA*, vol. 114, no. 50, pp. 13260–13265, 12. 2017. [PubMed: 29158415]
- [54]. El-Giar EE-D-M and Wipf DO, “Preparation of tip-protected Poly(oxyphenylene) coated carbon-fiber ultramicroelectrodes,” *Electroanalysis*, vol. 18, no. 23, pp. 2281–2289, 12. 2006.
- [55]. Obaid A et al., “Massively parallel microwire arrays integrated with CMOS chips for neural recording,” *Sci. Adv*, vol. 6, no. 12, 3. 2020, Art. no. eaay2789.
- [56]. Saleh M et al., “CMU array: A 3D nano-printed, customizable ultra-high-density microelectrode array platform,” *Biorxiv*, vol. 4, 1. 2019, Art. no. 742346.
- [57]. Bielefeldt K, Zhong F, Koerber HR, and Davis BM, “Phenotypic characterization of gastric sensory neurons in mice,” *Amer. J. Physiol.-Gastrointest. Liver Physiol*, vol. 291, no. 5, pp. 987–997, 2006.

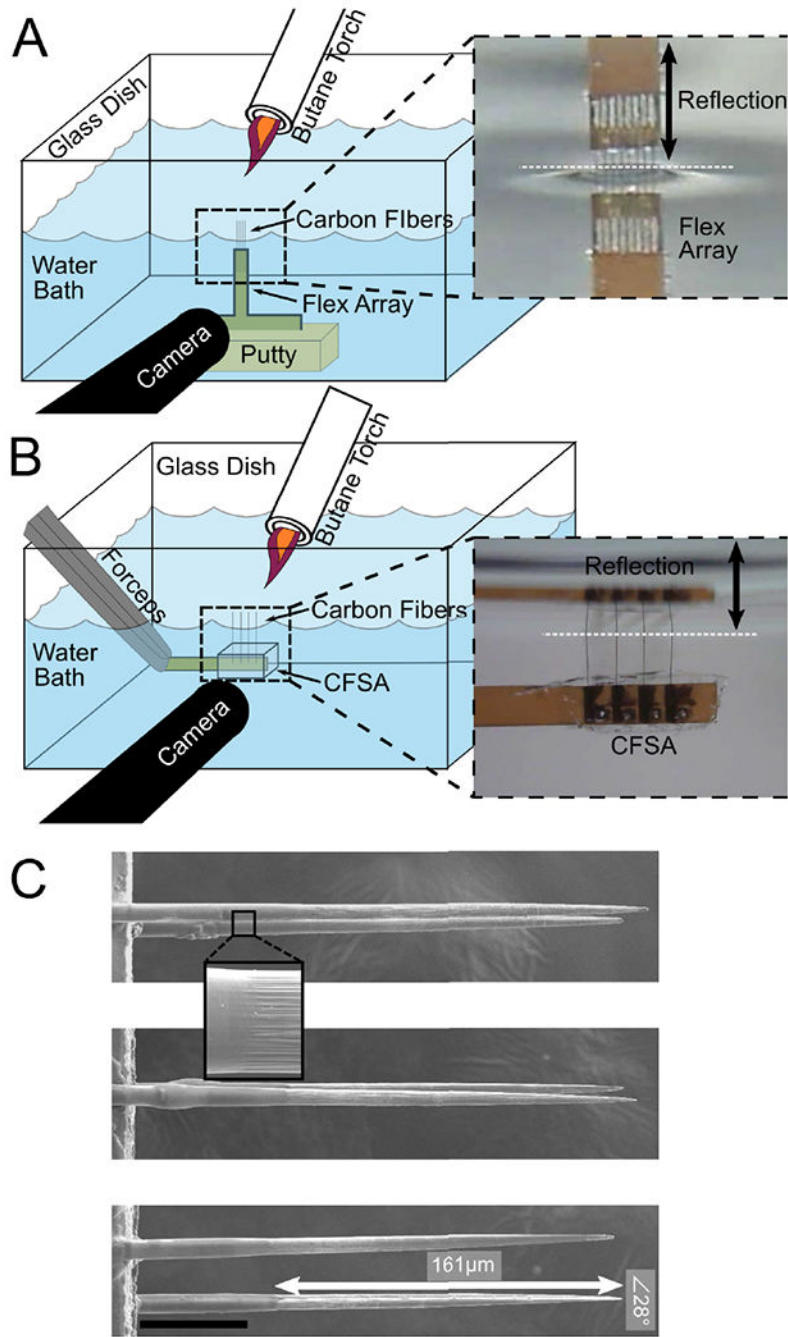


- [58]. Na Ket al., "Novel diamond shuttle to deliver flexible neural probe with reduced tissue compression," *Microsyst. Nanoeng.*, vol. 6, no. 1, pp. 1–13, 12. 2020.
- [59]. Lyttle DN, Gill JP, Shaw KM, Thomas PJ, and Chiel HJ, "Robustness, flexibility, and sensitivity in a multifunctional motor control model," *Biol. Cybern.*, vol. 111, no. 1, pp. 25–47, 2017. [PubMed: 28004255]
- [60]. Khurram Aet al., "Chronic monitoring of lower urinary tract activity via a sacral dorsal root ganglia interface," *J. Neural Eng.*, vol. 14, no. 3, 6. 2017, Art. no. 036027.
- [61]. Fisher LE, Ayers CA, Ciollaro M, Ventura V, Weber DJ, and Gaunt RA, "Chronic recruitment of primary afferent neurons by microstimulation in the feline dorsal root ganglia," *J. Neural Eng.*, vol. 11, no. 3, 6. 2014, Art. no. 036007.
- [62]. Yan Det al., "Microneedle penetrating array with axon-sized dimensions for cuff-less peripheral nerve interfacing," in *Proc. 9th Int. IEEE/EMBS Conf. Neural Eng. (NER)*, 3. 2019, pp. 827–830.



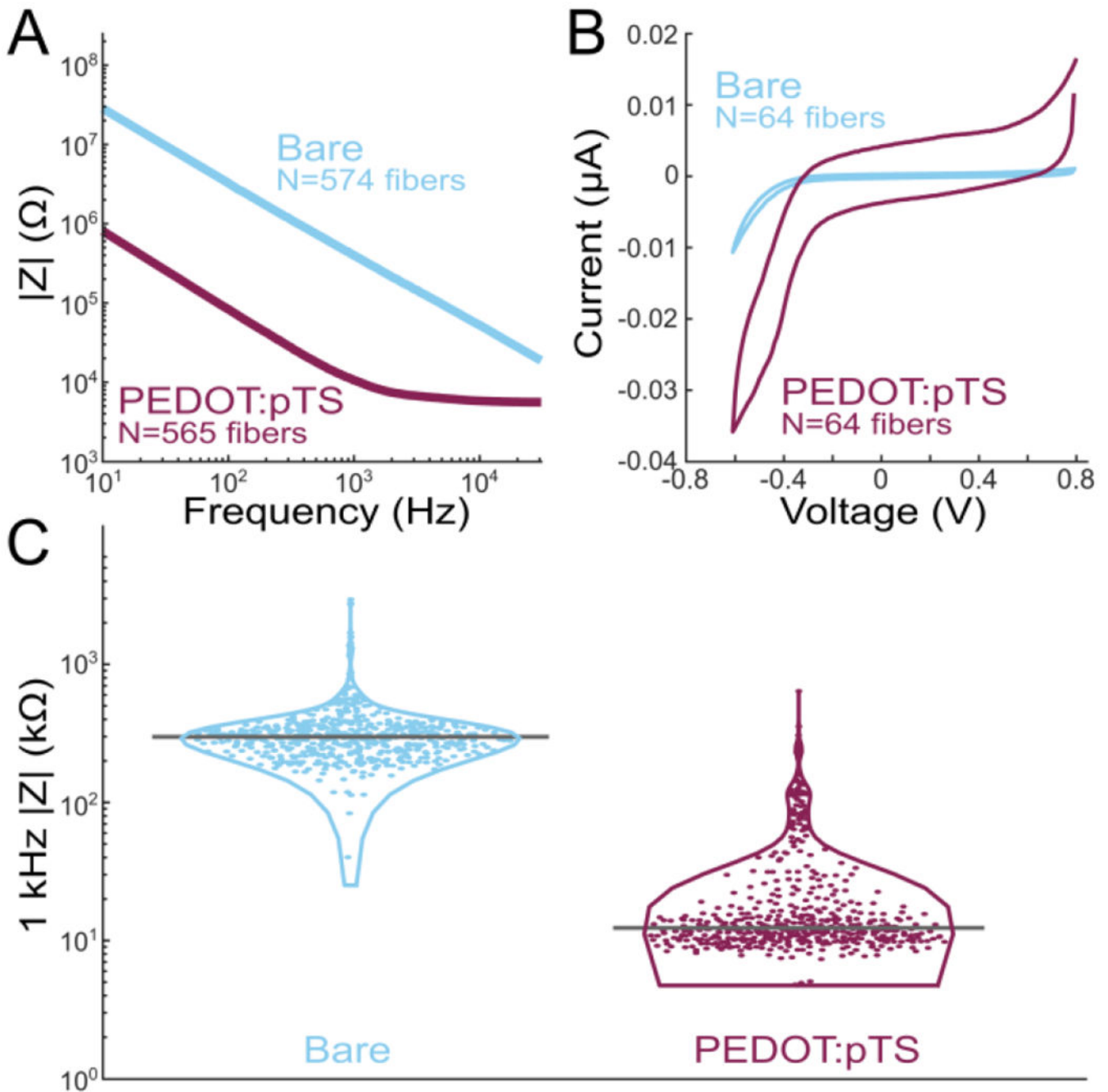
**Fig. 1.** Fabrication steps of carbon fiber silicone array (CFSA). A) A custom polyimide PCB (gold) is slotted into a custom aluminum holder (grey) and four polyimide-insulated wires (gold) are positioned above the area of interest on the polyimide PCB. B) The wires and carbon fibers are electrically connected and secured to the polyimide PCB. B1) The tip of each wire is exposed from polyimide insulation and placed into the gold-plated vias in the polyimide PCB. B2) Silver epoxy is applied to the pair of connected gold traces and the adjoining gold-plated via. B3) Bare carbon fibers are placed in the silver epoxy between the pair of

gold traces, and then cured. B4) Insulating epoxy is applied over the electrical connections, and then cured. C) The aluminum holder is laid flat and a 3-D printed device (green) is placed over the wires to create a well for the silicone. Silicone (blue) is applied with pulled glass capillaries and then cured. D) The polyimide PCB with attached wires, carbon fibers, and silicone is lifted from the holder. E) Pictures of the CFSA with the excess tails of polyimide PCB removed, seen from the front (left) and back (right).



**Fig. 2.** Blowtorch schematic and sharpened fibers. A) Flex Arrays are secured with putty to the water dish base. The water level is adjusted until the carbon fiber tips touch their reflection on the underside of the water surface (inset, black arrow denotes reflection). B) CFSA's are held with forceps and lowered into the water dish until the carbon fiber tips touch their reflection on the underside of the water surface (inset, black arrow denotes reflection). With both arrays, a pen camera located outside the water dish views the carbon fiber reflection under the water surface to confirm alignment at the water surface. A butane flame is passed

over the water surface to sharpen the carbon fibers. C) Sharpened fibers have a smooth transition from parylene-C to bare carbon (inset). A representative SCF has 161  $\mu\text{m}$  of carbon exposed from parylene-C (white arrow) and a tip angle of 28 degrees. Scale bar is 50  $\mu\text{m}$ .



**Fig. 3.** Electrochemical impedance spectroscopy and cyclic voltammetry (CV) analysis of SCFs. A) Impedance magnitude frequency spectrogram of bare SCFs (blue, N = 574) and PEDOT:pTS coated SCFs (magenta, N = 565). B) CV curves of bare (N = 64) and PEDOT:pTS coated (N = 64) SCFs. The cathodal charge storage capacity increased from  $15.2 \pm 5.4 \mu\text{C}/\text{cm}^2$  to  $255.0 \pm 148.6 \mu\text{C}/\text{cm}^2$  once SCFs were coated with PEDOT:pTS. C) Violin plot of 1 kHz impedance magnitudes of bare (N = 574) and PEDOT:pTS coated (N = 565) SCFs.

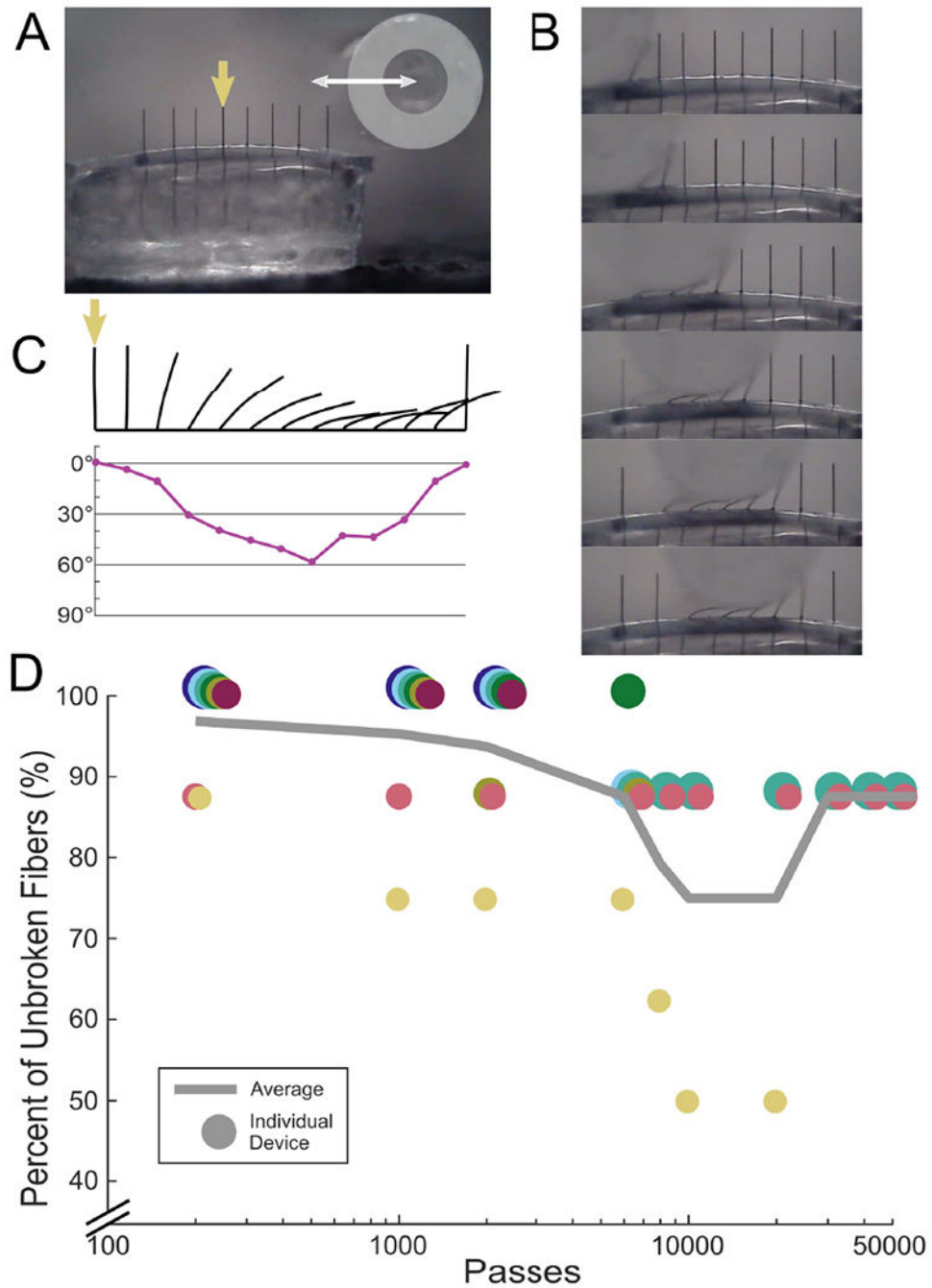
Mean 1 kHz impedance magnitude was  $334.8 \pm 243.2 \text{ k}\Omega$  and  $32.3 \pm 55.7 \text{ k}\Omega$  for bare and PEDOT:pTS coated SCFs.

Author Manuscript

Author Manuscript

Author Manuscript

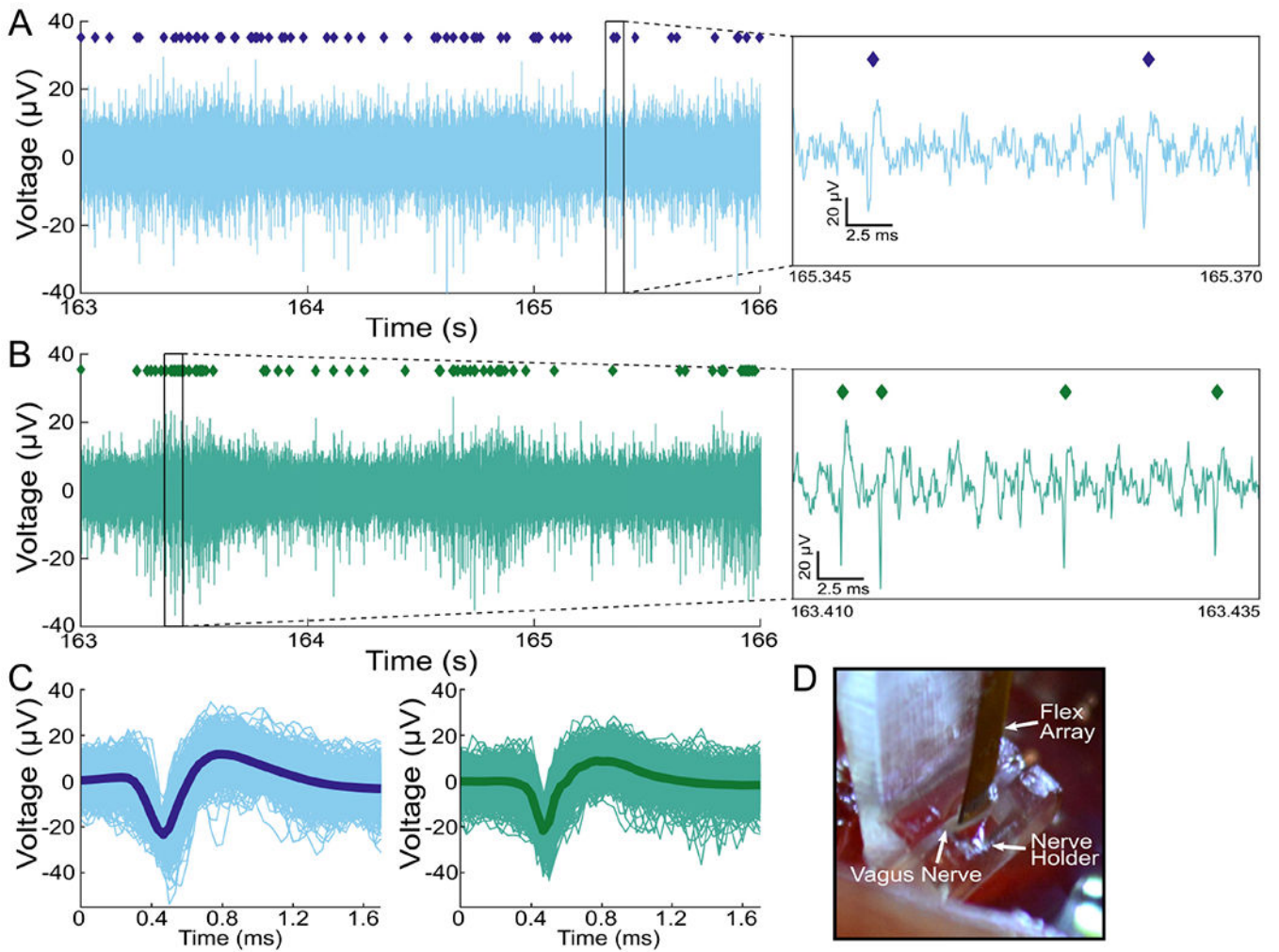
Author Manuscript



**Fig. 4.** Bend test of silicone-embedded carbon fibers. A) Bend test setup with a silicone carbon fiber testing device and a 0.75 mm diameter glass capillary (outlined in light grey). The glass capillary passes over the carbon fibers. A complete run from end-to-end counts as one pass. B) Still images of bent carbon fibers from a video shown in (A) and in Supplemental Video 1 during one pass. C) Top: Outlines of a single fiber, indicated in (A) by the yellow arrow, bending under the glass capillary. Bottom: Corresponding angle measurements from the outline of the fiber in each still image. On average, carbon fibers deflected  $50.9 \pm 6.2$

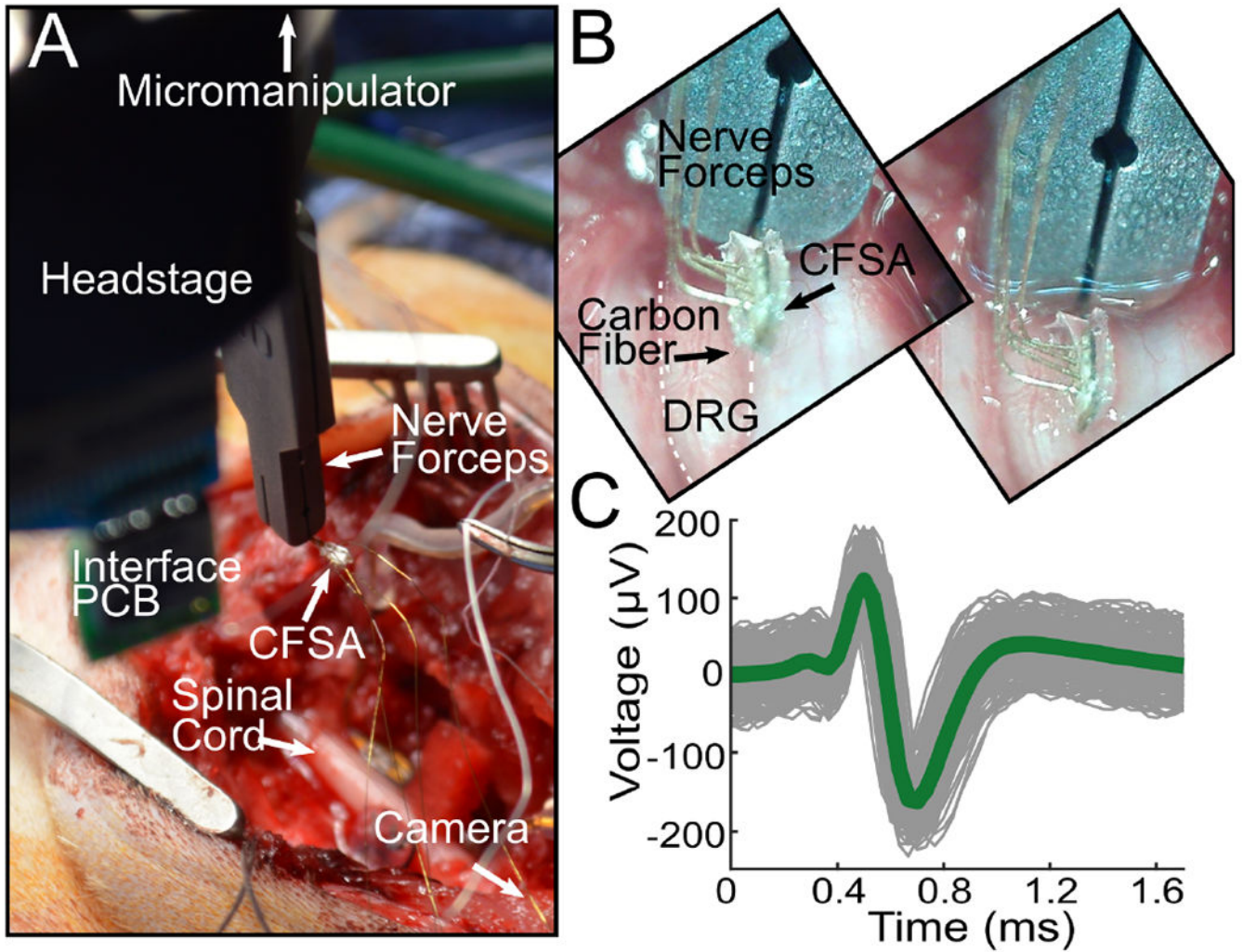


degrees from the vertical position ( $N = 23$  fibers, 3 devices). D) Bend test data showing the percent of unbroken fibers plotted against the number of glass capillary passes. Each device contains 8 fibers and is shown as an individually colored circle. The average across all devices is shown as the solid line. After 50,000 passes, 87.5% of fibers remained unbroken.

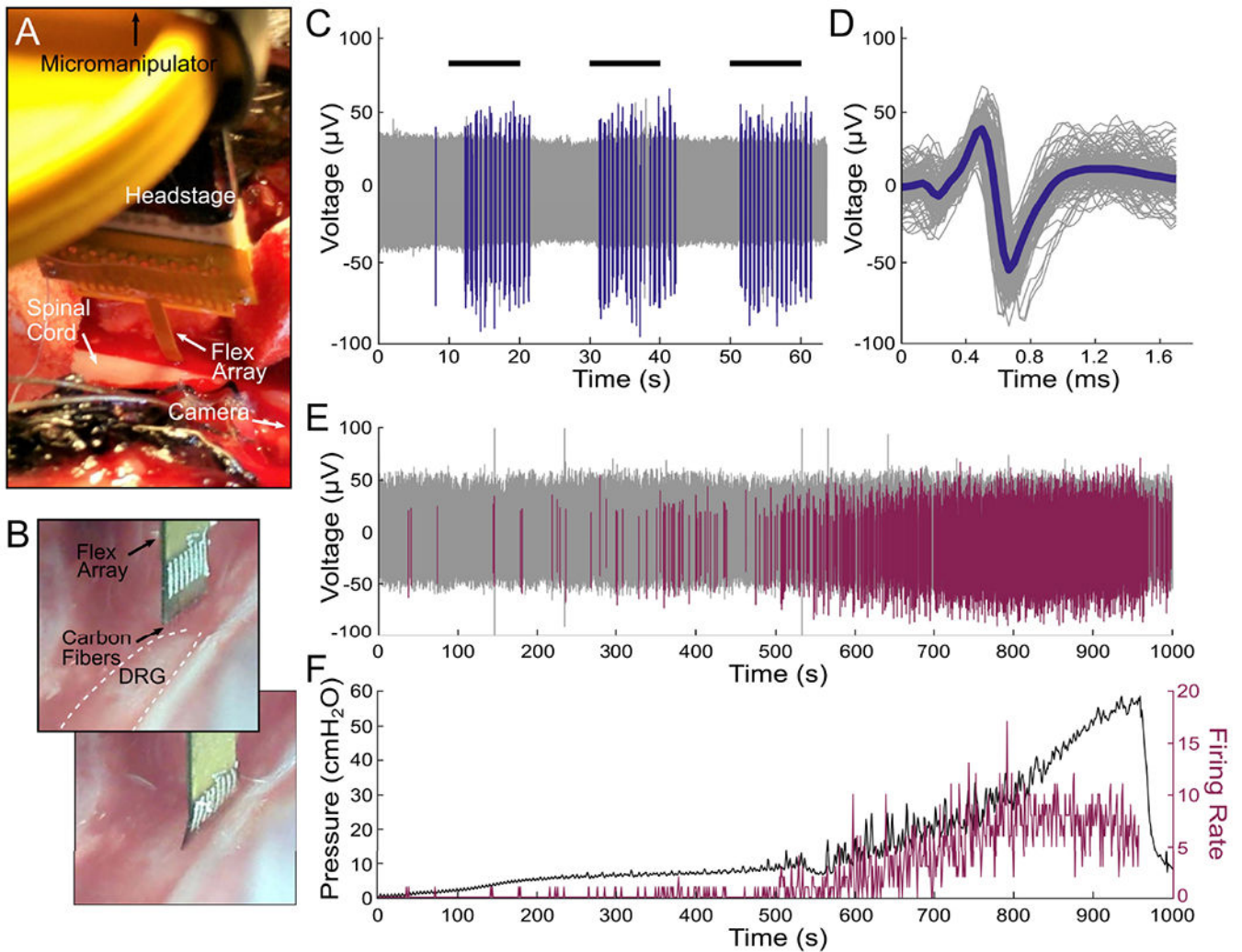


**Fig. 5.**

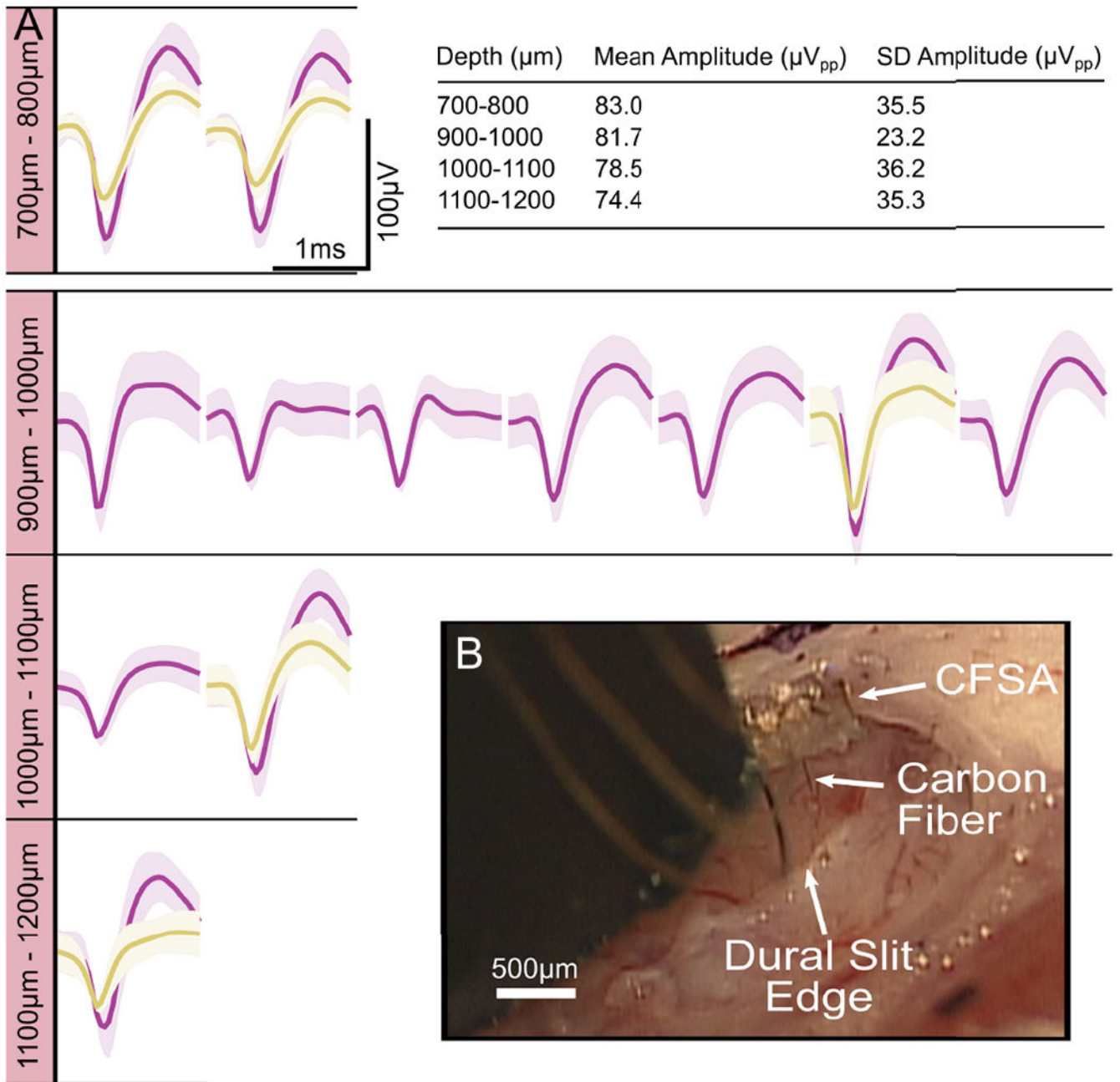
Neural activity recorded from a rat CVN with SCFs on a Flex Array, representative of the data set in Jiman *et al.*, 2020. A and B) Three seconds of filtered data recorded on two SCFs. An inset of each raw trace shows 25  $\mu\text{s}$  of data. C) Corresponding neural cluster indicated in (A), left, and (B), right, by diamond markers. The cluster in (A) has a mean  $V_{pp} = 139.9 \pm 26.4 \mu\text{V}$ . The cluster in (B) has a mean  $V_{pp} = 122.8 \pm 24.3 \mu\text{V}$ . D) Surgical setup showing the CVN lifted by the nerve holder with the Flex Array aligned above it.



**Fig. 6.** CFSA experiment in feline DRG. A) Surgical setup showing the CFSA, held by nerve forceps, and interface PCB connected to a headstage lowered to the DRG with micromanipulator. The DRG is located below the visible spinal cord. The camera is positioned parallel to the spinal cord to the right of the surgical cavity. B) CFSA, held by nerve forceps, as seen by the camera before (top) and after (bottom) insertion into the DRG (white dashed line). C) Spontaneous neural cluster and mean waveform shape (green line) recorded in the DRG with the CFSA (mean  $V_{pp} = 298.8 \pm 15.5 \mu\text{V}$ , SNR = 6.5).

**Fig. 7.**

Flex Array experiments in feline DRG. A) Surgical setup showing the Flex Array connected to a headstage lowered to the DRG with a micromanipulator. The DRG is located above the spinal cord and the camera is positioned parallel to the DRG to the. B) Flex Array as seen by the camera before (top) and after (bottom) insertion into the DRG (white dashed line). C) Neural waveforms in response to scrotal brushing (horizontal black lines) highlighted in blue. D) The brushing cluster from (C) with mean waveform shown by thick blue line (mean  $V_{pp} = 108.7 \pm 11.0 \mu V$ , SNR = 6.0). E) Neural waveforms associated with bladder filling are colored purple. F) Bladder pressure (left axis) and firing rate (right axis) of bladder cluster in (E), with correlation coefficient of 0.83.



**Fig. 8.**

Electrophysiology recorded from SCFs on CFSAs in the rat motor cortex. A) Neural units recorded at varying depth increments. The units were recorded on six SCFs across three devices during seven independent insertions into the brain. Each unit, or overlapping units, was recorded from a single SCF during one insertion. The inset table shows a summary of the mean amplitude and standard deviation of neural units at each depth. B) Surgical setup of CFSA insertion into the brain through the dural slit.