

RESEARCH

Open Access



# Developmental series of gene expression clarifies maternal mRNA provisioning and maternal-to-zygotic transition in a reef-building coral

Erin Chille<sup>1\*</sup>, Emma Strand<sup>1</sup>, Mayaan Neder<sup>2,3</sup>, Valeria Schmidt<sup>4</sup>, Madeleine Sherman<sup>1</sup>, Tali Mass<sup>2</sup> and Hollie Putnam<sup>1</sup>

## Abstract

**Background:** Maternal mRNA provisioning of oocytes regulates early embryogenesis. Maternal transcripts are degraded as zygotic genome activation (ZGA) intensifies, a phenomenon known as the maternal-to-zygotic transition (MZT). Here, we examine gene expression over nine developmental stages in the Pacific rice coral, *Montipora capitata*, from eggs and embryos at 1, 4, 9, 14, 22, and 36 h-post-fertilization (hpf), as well as swimming larvae (9d), and adult colonies.

**Results:** Weighted Gene Coexpression Network Analysis revealed four expression peaks, identifying the maternal complement, two waves of the MZT, and adult expression. Gene ontology enrichment revealed maternal mRNAs are dominated by cell division, methylation, biosynthesis, metabolism, and protein/RNA processing and transport functions. The first MZT wave occurs from ~4-14 hpf and is enriched in terms related to biosynthesis, methylation, cell division, and transcription. In contrast, functional enrichment in the second MZT wave, or ZGA, from 22 hpf-9dpf, includes ion/peptide transport and cell signaling. Finally, adult expression is enriched for functions related to signaling, metabolism, and ion/peptide transport. Our proposed MZT timing is further supported by expression of enzymes involved in zygotic transcriptional repression (Kaiso) and activation (Sox2), which peak at 14 hpf and 22 hpf, respectively. Further, DNA methylation writing (DNMT3a) and removing (TET1) enzymes peak and remain stable past ~4 hpf, suggesting that methylome programming occurs before 4 hpf.

**Conclusions:** Our high-resolution insight into the coral maternal mRNA and MZT provides essential baseline information to understand parental carryover effects and the sensitivity of developmental success under increasing environmental stress.

**Keywords:** Time course, WGCNA, Epigenetics, Resilience, Oocyte, Embryo

\* Correspondence: [echille124@gmail.com](mailto:echille124@gmail.com)

<sup>1</sup>Department of Biological Sciences, University of Rhode Island, Rhode Island, USA

Full list of author information is available at the end of the article



© The Author(s). 2021 **Open Access** This article is licensed under a Creative Commons Attribution 4.0 International License, which permits use, sharing, adaptation, distribution and reproduction in any medium or format, as long as you give appropriate credit to the original author(s) and the source, provide a link to the Creative Commons licence, and indicate if changes were made. The images or other third party material in this article are included in the article's Creative Commons licence, unless indicated otherwise in a credit line to the material. If material is not included in the article's Creative Commons licence and your intended use is not permitted by statutory regulation or exceeds the permitted use, you will need to obtain permission directly from the copyright holder. To view a copy of this licence, visit <http://creativecommons.org/licenses/by/4.0/>. The Creative Commons Public Domain Dedication waiver (<http://creativecommons.org/publicdomain/zero/1.0/>) applies to the data made available in this article, unless otherwise stated in a credit line to the data.

## Background

Under escalating threats from anthropogenic climate change, coral reefs are experiencing massive population declines globally [1]. Contributing to the global destabilization of coral reef ecosystems is the decreased fitness of coral during its early development [2–5] due to anthropogenic climate change [6–8]. The majority of corals (~85%) are broadcast spawners [9], releasing eggs and sperm into the water column where fertilization and embryogenesis occur [10]. Over the course of hours to days, embryos develop into planula larvae [10] and may spend several hours to weeks in the water column, or searching the benthos for an appropriate location to settle and metamorphose into coral spat [11]. This prolonged pelagic period constitutes an ontogenetic bottleneck for corals and other broadcast-spawning marine organisms, during which they are particularly sensitive to climate-related stressors [6, 7].

Acute temperature stress can be lethal to coral embryos and larvae, while ocean acidification can have sublethal effects [7], including decreased fertilization efficiency [12, 13] and metabolic depression [14–17]. Other conditions co-occurring with climate change, including high and low salinity, hypoxia, and exposure to UV radiation, can also decrease fitness during development [7, 8]. The cumulative effects of these unprecedented stressors on early development may compromise recruitment, the process in which offspring repopulate and replenish declining populations, further contributing to the destabilization of coral reef ecosystems [2].

Several studies on the sensitivity of embryonic development in marine invertebrates have shown that the earliest life stages are robust to climate-related stressors, but embryos become more vulnerable as gastrula and larvae [6, 7, 18–22]. This has generally been attributed to the loss of maternal defenses, such as heat shock proteins, during the course of development [6, 7, 18–22]. During oogenesis, maternally-derived mRNAs (or parentally-derived in the case of hermaphroditic species), along with other gene products (i.e. transcription factors, cofactors), are loaded into eggs [23, 24]. As gametes and early embryos do not yet contain the molecular machinery necessary to regulate gene expression, these mRNAs direct early development until the zygotic molecular machinery is able to take over [23]. The maternal mRNA complement is the result of selection in response to life history [24, 25], and can be primed to support embryonic resilience to predictable stressors [26–28]. For example, it has been shown that in cichlids, the maternal mRNA complement differs by trophic specialization [25]. Additionally, many organisms can prime the immune response of their offspring by providing increased levels of mRNAs coding for immune response-related enzymes [25, 27–31]. In terms of marine invertebrates,

the annelid *Hediste diversicolor*, was found to store higher levels of the antimicrobial peptide hedistin in the oocytes after an immune challenge [28], and sea urchins with different life-history strategies (lecithotrophy or planktotrophy) were found to differentially provision oocytes with mRNAs related to oxidative stress [32].

Maternal provisioning may explain the resilience of early coral embryos to expected stressors and is a mechanism of coral reef resilience that remains to be fully investigated [33–36]. However, there is growing concern that maternal provisioning may not provide adequate defense against rapid climate change, especially for organisms living at the edge of their physiological limits [7, 22, 24, 37]. For example, coral bleaching from temperature stress can negatively impact maternal provisioning of proteins, lipids, mycosporine-like amino acids and carotenoids in the eggs [38]. Consequently, characterization of the coral maternal mRNA complement can provide essential information regarding setting the stage for, and the sensitivity of, developmental success under increasing environmental stressors.

While maternal provisioning may protect the embryo from expected stressors early on, these gene products only persist for a limited time, after which point embryo vulnerability appears to intensify [6, 7, 18–22]. In a process known as the maternal-to-zygotic transition (MZT), maternal gene products are degraded as zygotic transcription activates and intensifies [39–41]. The loss of maternal defenses during this process has been posited to contribute to higher morbidity and mortality in fish gastrula, sea urchin blastula/gastrula, as well as many marine invertebrate larvae during exposure to environmental stressors [7, 20–22, 37].

The MZT and many of the molecular mechanisms underlying its regulation are conserved in metazoans [39, 40, 42–44]. Maternal mRNA clearance is mediated both maternally, primarily by the enzyme Smaug [45, 46], and zygotically [40]. Transcriptional repressors, including the maternally-derived enzyme Kaiso [47, 48], prevent zygotic transcription until a stable, open chromatin state is achieved [49]. Once this occurs, ZGA begins gradually and ramps in intensity as it progresses [39, 40]. The low-intensity beginning of ZGA (the “first” or “minor” wave) is controlled by maternal transcription factors, including Sox2 [50], while the ramping of ZGA to higher intensities (the “major wave”) is triggered by the clearance of the majority of maternal transcripts and the lengthening of the cell cycle through the degradation of cell-cycle regulators such as Cyclin-B [39, 51]. Among the first of the enzymes shown to be zygotically expressed in sea urchins and other organisms are those involved in bauplan formation, including Wnt8 and Brachyury (TBXT) [52–54]. Upon culmination of the MZT, zygotically-derived gene products regulate developmental progression and homeostasis [39].

Characterizing the timeline of the MZT in reef-building corals in regards to these conserved mechanisms will help to establish the time period during which maternal defenses are active, and at which point coral embryos may become more susceptible to environmental perturbations.

Enzymes linked to epigenetic modification have also been shown to be key players in the repression and activation of zygotic transcription, with increases in DNA methylation and simultaneous decreases in chromatin accessibility associated with the onset of ZGA [40, 55]. Additionally, these enzymes confer potential mechanisms for cross-generational plasticity, which may additionally buffer reef-building corals and other organisms from the effects of unprecedented stressors [56, 57]. Several key epigenetic modification associated enzymes that provide transcriptional regulation capacity include: DNA methyltransferases (DNMT3a, DNMT1), the histone deacetylase recruiting enzyme ubiquitin-like containing PHD and RING finger domains 1 (UHRF1), and methyl-binding domains (MBD2, MBD3), as well as the active demethylation enzyme ten-eleven translocation enzyme (TET1) and chromatin regulation enzyme brahma-related gene-1 (BRG1). DNMTs are responsible for laying down DNA methylation *de novo* (DNMT3a) and maintaining DNA methylation through mitosis (DNMT1) [58], while TET1 actively removes DNA methylation [59]. Depletion of DNMT1 can lead to the premature onset of ZGA in *Xenopus* embryos [60]. The protein UHRF1 is associated with DNMT1, marking hemimethylated DNA for DNMT1 activity [61]. The closely-related MBD2 and MBD3 proteins are also involved in transcriptional repression as components of the Mi-2/NuRD corepressor complex [62–64]. In mice, it has been suggested that MBD3 is essential for embryo viability as a key component of the Mi-2/NuRD corepressor complex, while MBD2 may be a functionally redundant cofactor [64]. Finally, BRG1 proteins are derived from the maternal mRNA complement and are suggested to be the first gene required for ZGA in mammals

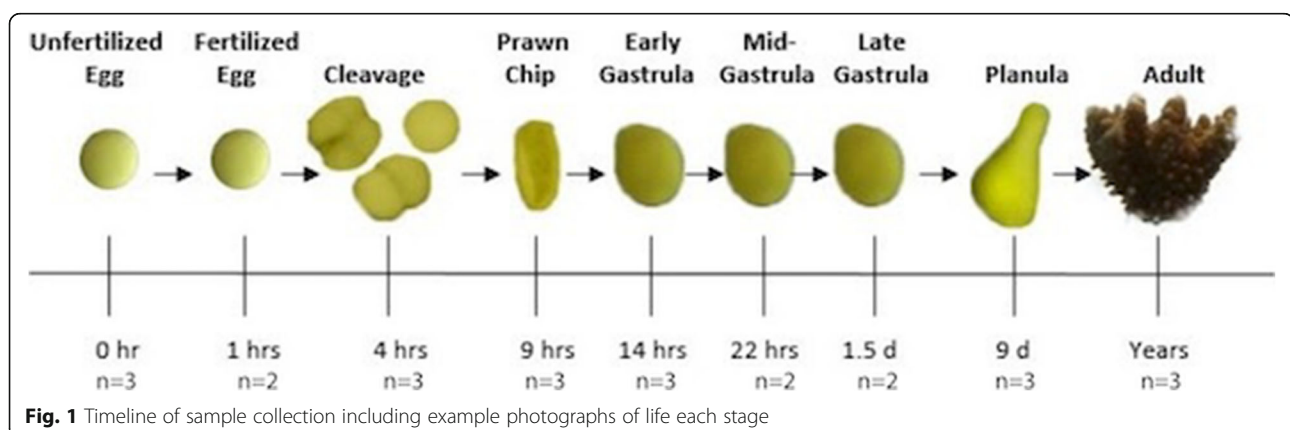
[65]. BRG1 is generally associated with increasing chromatin accessibility because of its role in breaking the bonds between DNA and histones through ATP hydrolysis. Analyzing the expression profiles of these specific enzymes involved in epigenetic modification may provide further support on the epigenetic state necessary for ZGA.

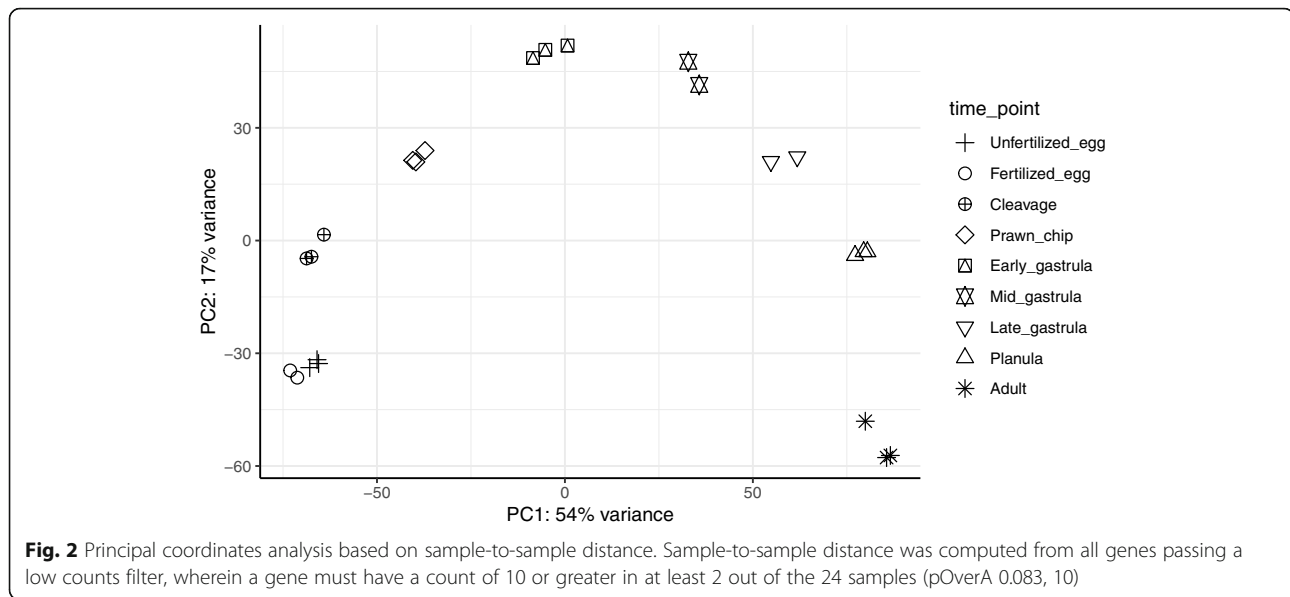
Here, extensive documentation of the reproductive timeline and physical developmental for the Pacific rice coral, *Montipora capitata*, in Hawaii [66–68] allows us to examine the coral's developmental timing through the lens of gene expression. In this study, we examine gene expression dynamics across nine life stages from pre-fertilization to adult, focusing on shifts in the gene expression network within the first 24 h post-spawning (Fig. 1). In doing so, we aim to characterize the *M. capitata* maternal mRNA complement, as well as the timing and functional patterns of ZGA and the MZT. This high-resolution analysis of the *M. capitata* developmental transcriptome will provide a basis from which to investigate how its early developmental stages respond to environmental stressors, as well as the potential for carryover or latent effects due to parental history.

## Results

### RNA sequencing, quality control, and mapping

TruSeq Illumina Stranded Paired-End (PE) sequencing of cDNA libraries prepared following polyA enrichment resulted in 935,000,000 PE reads with an average of 19,392,156 reads per sample. After quality filtering and adapter removal, 694,800,000 PE reads remained with an average of 14,241,176 reads per sample. The average alignment rate was  $79.28 \pm 1.95\%$  mean  $\pm$  sem. The GFFcompare results showed that a total of 63,227 genes queried from the mapped GTF files were matched to the 63,227 genes in the reference genome [69]. Altogether, there were 40,883 matching intron chains, 63,218 matching loci, and zero missing elements.





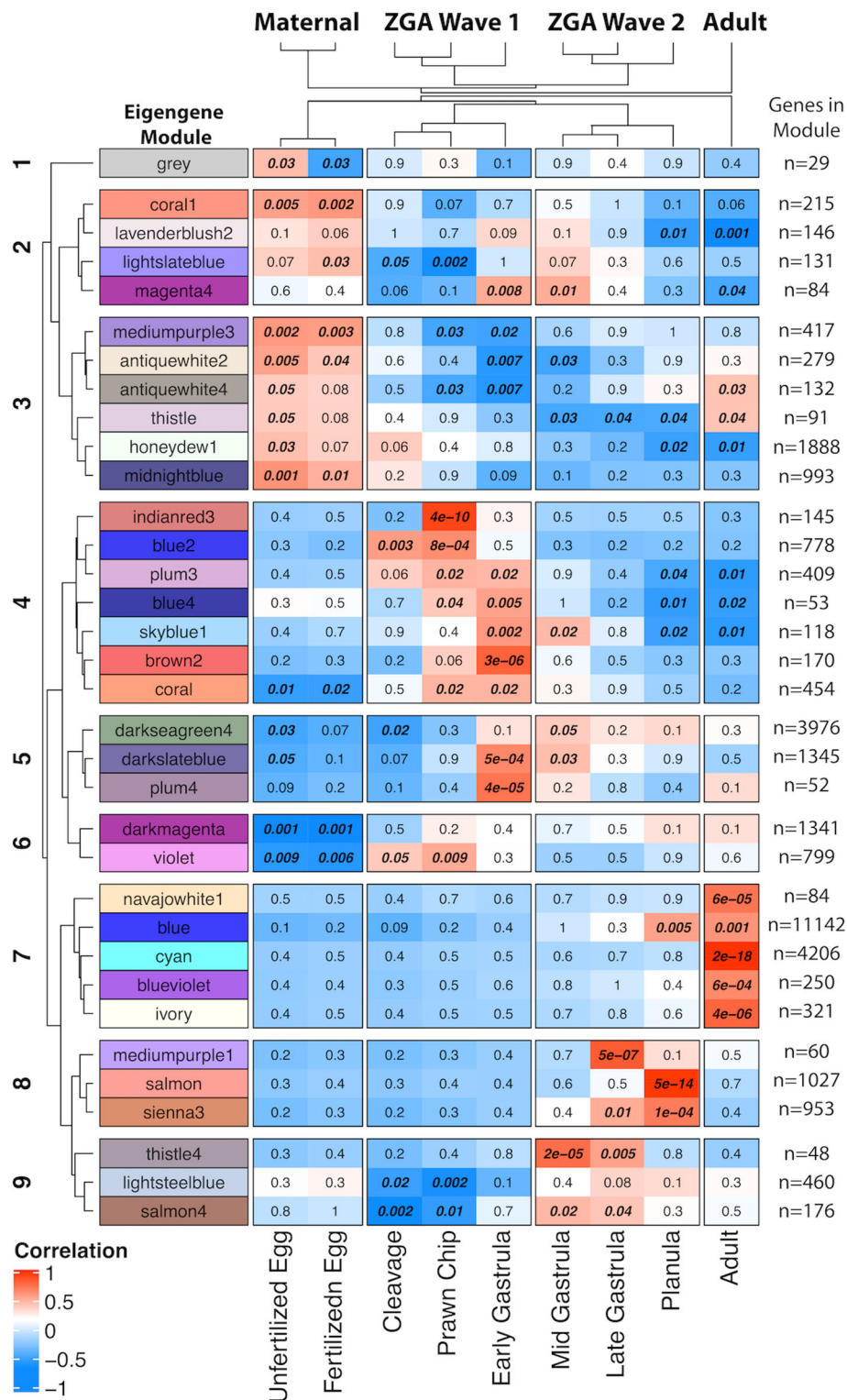
### Global gene expression patterns

Pre-filtering to retain genes with counts over 10 in at least 8.3% of samples (i.e., the proportion representing a single life stage) resulted in 32,772 genes for principal coordinates and weighted gene coexpression network analyses. A principal coordinates analysis conducted with this gene set shows significant differences in global gene expression between time points with the exception of samples corresponding to unfertilized and fertilized eggs, which cluster together. Differences in gene expression between life stages is primarily explained by PC1 and PC2, which account for 54% and 17% of variation in expression, respectively (Fig. 2). WGCNA assigned genes into 34 modules, with 48 to 11,142 genes in each module, one of which, module Grey, contains 29 genes that did not fit with any other group. Modules exhibited nine distinct expression profiles (Fig. 3 left axis) based on module clustering by eigengene dissimilarity. Further, clustering of life stages by module-trait correlation identified four expression groups, which we call developmental clusters throughout this manuscript (Fig. 3, clustering on top axis). The first developmental cluster, the “Maternal” modules (modules grey, coral1, lightslateblue, mediumpurple3, antiquewhite2, antiquewhite4, thistle, honeydew1, and midnightblue), contains the unfertilized and fertilized egg sampling time points. The second developmental cluster, the “ZGA Wave 1” modules (modules magenta4, indianred3, blue2, plum3, blue4, skyblue1, brown2, coral, darkslateblue, plum4, and violet), contains the life stages cleavage, prawn chip, and early gastrula. The third developmental cluster, the “ZGA Wave 2” modules

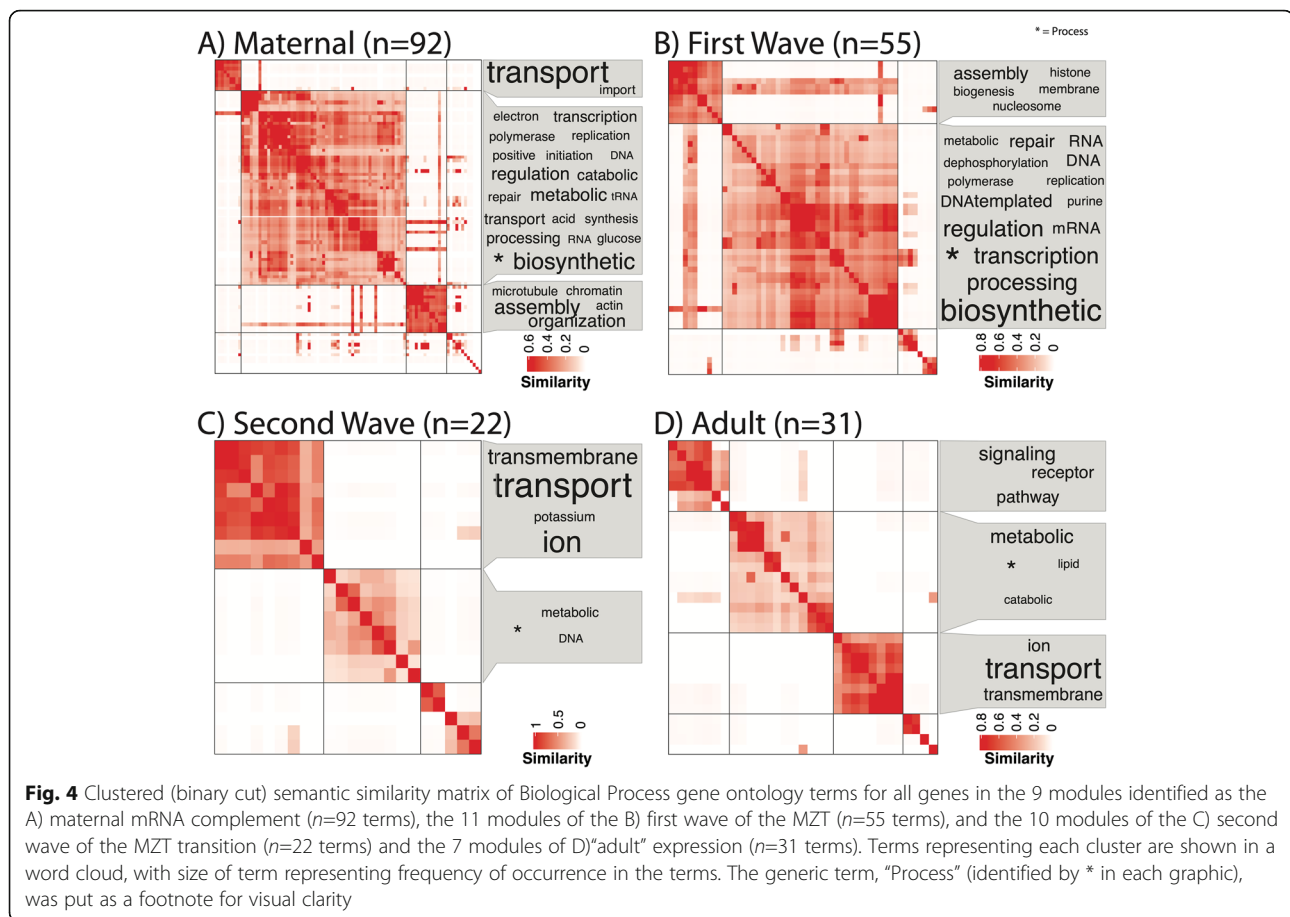
(modules magenta4, skyblue1, darkseagreen, darkslateblue, thistle4, salmon4, mediumpurple1, sienna3, salmon, and blue), contains the life stages mid-gastrula, late gastrula, and planula. Finally, the fourth developmental cluster, “Adult”, (modules antiquewhite4, thistle, navajowhite1, blue, cyan, blueviolet, and ivory) contains only the adult samples.

### Functional enrichment

Functional enrichment analysis was undertaken for each life stage (Table S1) and for the four developmental clusters: Maternal, ZGA Wave 1, ZGA Wave 2, and Adult (Figs. 4 and 5). The maternal complement has 92 enriched biological processes (Table S2) primarily related to cell division, DNA repair, methylation, biosynthesis, metabolism, and protein/RNA processing and transport and 92 enriched molecular functions (Table S2) primarily related to binding, translation, transmembrane transport, and enzymatic activity. The first wave of the ZGA is enriched in 55 biological process terms (Table S3) and 60 molecular function terms (Table S3). Biosynthesis activity remains high during the first wave of the ZGA, which is additionally associated with enrichment of GO terms related to RNA processing and histone assembly. The second wave of the ZGA is enriched in 22 biological process terms (Table S4) of transmembrane transport and DNA metabolic process, as well as 47 molecular function terms, corresponding to transport, oxidation-reduction process, and binding. Finally, the adult transcriptome is enriched in 31 biological process terms (Table S5) and 54 molecular functions. GO terms related to metabolism and transmembrane transport



**Fig. 3** Clustered heatmap of WGCNA module-trait correlations. Correlation values range from -1 (dark blue) to 0 (white) to +1 (red). Developmental expression clusters are shown on top, while sampled life stages are indicated on bottom. Module clusters 1-9 were identified via a distance matrix computed with hclust using module eigengenes



remain high in the adult transcriptome, in addition to terms related to cell signaling.

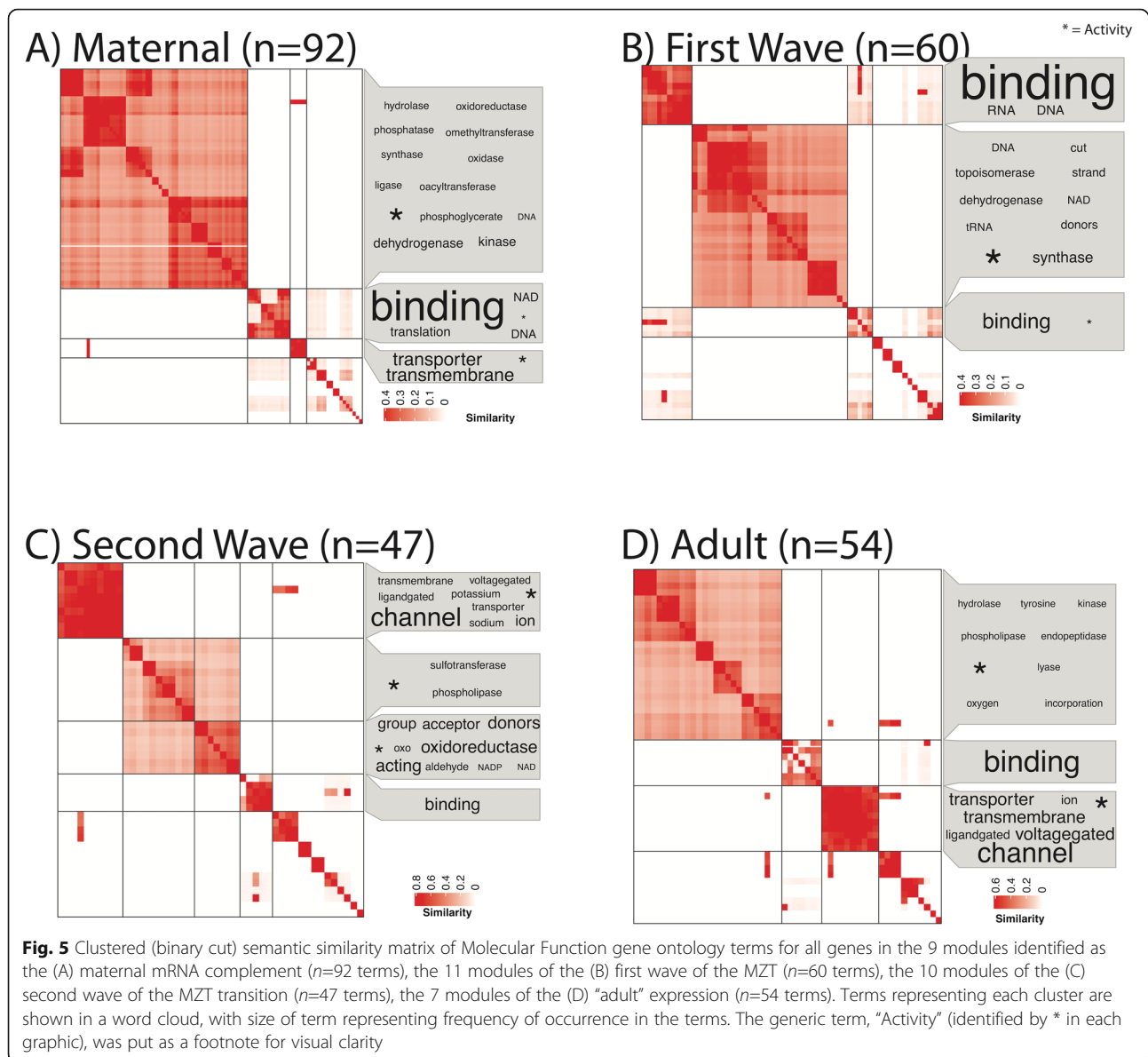
#### Expression of developmental biomarkers

The expression profiles of six developmental biomarker genes involved in the MZT and later development were assessed to test if our WGCNA-based timeline of the MZT was supported by these key developmental players. Several orthologs of MZT biomarkers were found using BLAST, including Cyclin-B (7 hits), Smaug (3 hits), Kaiso (90 hits), Sox2 (18 hits), Wnt8 (23 hits), and TBXT (15 hits). The expression profiles of these six genes, all of which showed significantly different expression patterns across life stages (Table S6), indicate their specific temporal activity during early development (Fig. 6). Firstly, Cyclin-B is highly expressed in unfertilized eggs up until cleavage. However, after this point its expression decreases monotonically until the planula stage (Fig. 6i). Next, both Smaug and Kaiso experience significant upregulation after fertilization and downregulation after the prawn chip stage (Fig. 6ii-iii). Then, during the early gastrula stage the zygotic transcription activator, Sox2, rapidly and significantly peaks

after which point it is significantly downregulated (Fig. 6iv). Wnt8 appears to be lowly expressed early on and is downregulated further after cleavage. However, it later significantly peaks in expression between the early gastrula and planula stages of development (Fig. 6v). Finally, TBXT is significantly upregulated starting after cleavage, leading to an expression peak that lasts until after the planula stage (Fig. 6vi).

#### Expression of epigenetic biomarkers

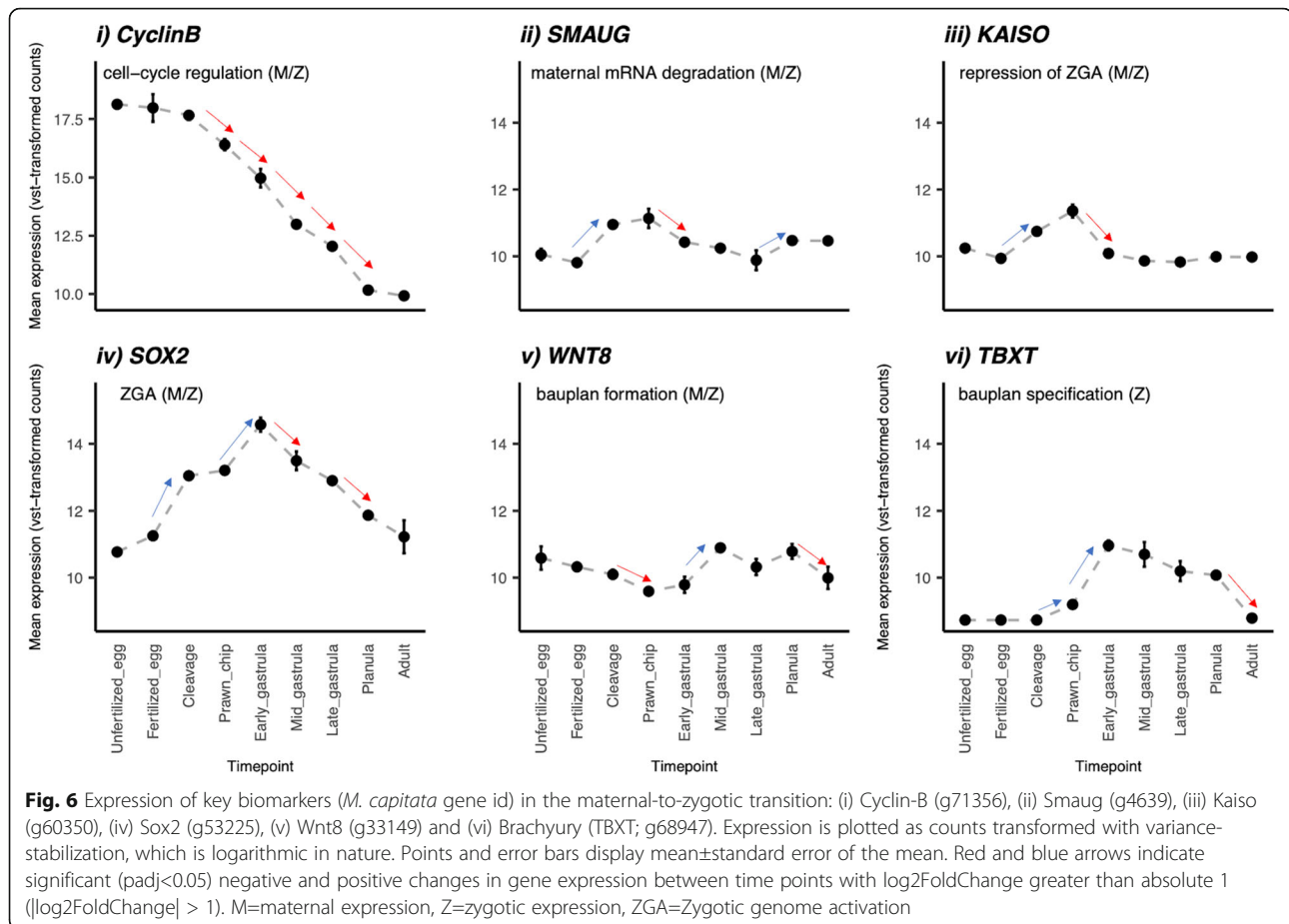
Targeted expression analysis of seven epigenetic biomarkers was also conducted to elucidate the epigenetic landscape necessary for the MZT. A Blast search of the *M. capitata* transcriptome reported 3 DNMT3a hits, 4 DNMT1 hits, 1 TET1 hit, 2 MBD2 hits, 1 MBD3 hit (shared with MBD2), 2 UHRF1 hits, and 84 BRG1 hits. The top hits of these seven genes all showed significantly different expression patterns across life stages (Table S6). Temporal expression of these epigenetic enzymes revealed three distinct patterns in expression (Fig. 7). First, for all seven enzymes, expression levels changed very little between the samples representing unfertilized eggs and fertilized eggs. After fertilization, DNMT1,



MBD2/3, and UHRF1 decrease in expression throughout development (Fig. 7ii, iv, v). For DNMT1, while expression appears to decrease overall throughout development, a small peak in expression occurs during late gastrulation. For MBD2/3, expression appears to plateau after the initial decrease following fertilization, while expression of UHRF1 appears to decrease monotonically throughout development (Fig. 7iv, v). In contrast to DNMT1, MBD2/3, and UHRF1, the expression of DNMT3A, TET1 and BRG1 increases significantly after fertilization and later plateaus. For TET1 and DNMT3A transcription appears to stabilize after cleavage, however BRG1 continues to be significantly upregulated until the prawn chip stage before plateauing.

## Discussion

In this study, developmental gene expression of the reef-building coral, *Montipora capitata*, was examined to characterize the maternal mRNA complement and function in oocytes and the timeline of the maternal to zygotic transition (MZT). In sampling nine time points, with six time points occurring within thirty-six hours of fertilization, our dataset provides the highest temporal resolution to date that captures complex gene expression dynamics underlying the MZT. WGCNA facilitated the identification of the maternal mRNA complement, two waves of ZGA, and adult expression. These results, along with targeted expression analysis of six developmental biomarkers provides evidence that the MZT begins



before cleavage (4 hpf) and continues through gastrulation. The expression profiles of seven epigenetic enzymes provide further support for the timing of the MZT and the epigenetic state necessary for ZGA in *M. capitata*. These findings provide an essential framework for future research on mechanisms of resilience in early developmental stages and the potential for parental carryover effects under increasing environmental stressors.

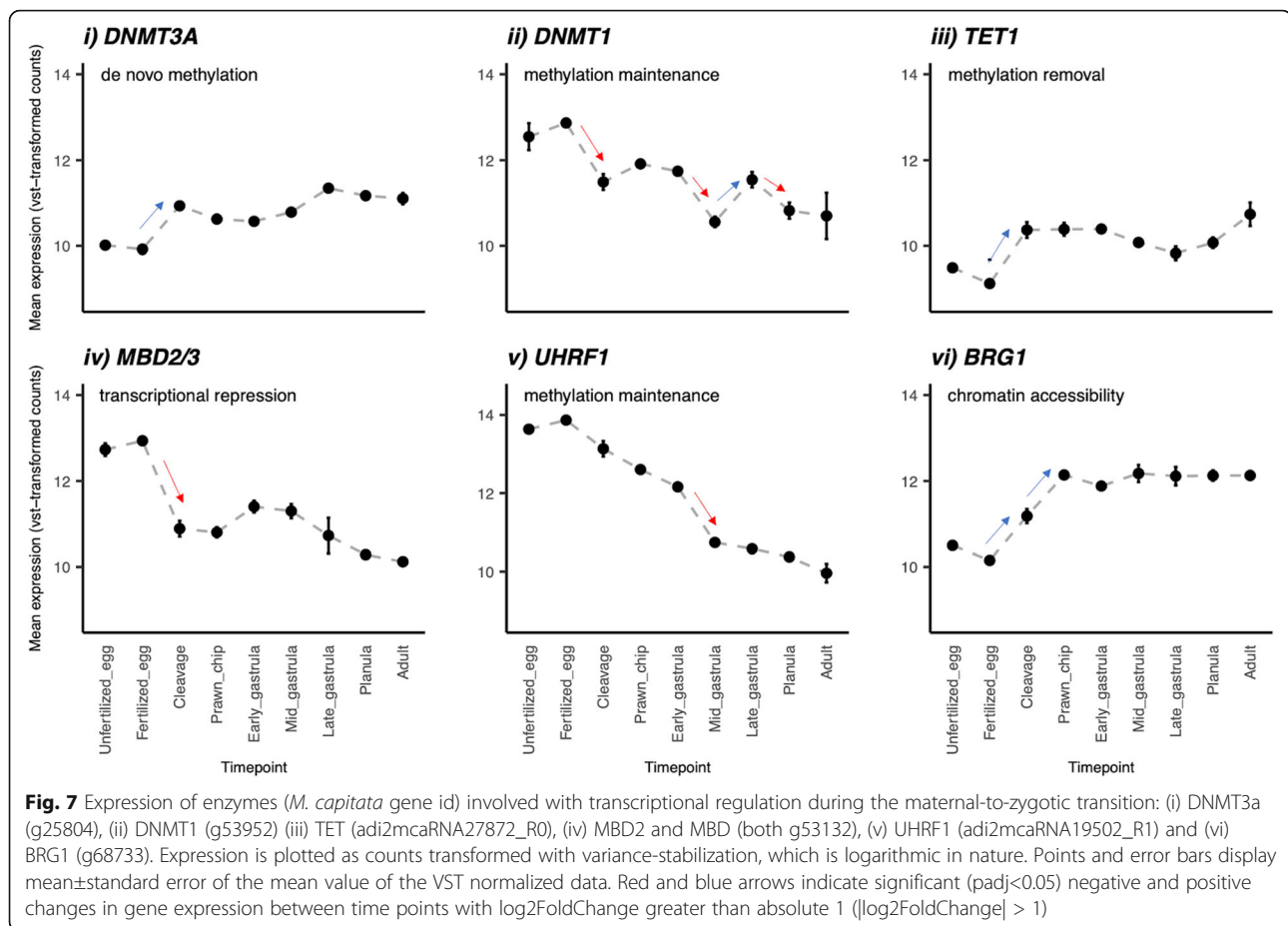
### Maternal provisioning

The active maternal mRNA complement, here defined as the modules significantly positively correlated with either the unfertilized and fertilized egg samples, was enriched in biological processes primarily related to housekeeping functions (e.g., vacuolar transport [GO:0007034], spliceosomal snRNP assembly [GO:0000387], D-amino acid metabolic process [GO:0046416], and DNA replication [GO:0006260]). This is unsurprising as the primary function of maternal mRNA provisioning is to regulate early development until the molecular machinery of the zygote can assume autonomy [23]. Extensive work across metazoan phyla shows enrichment of housekeeping functions in eggs [26, 70–72]. For example, in a study comparing the maternal mRNA

complement of the great pond snail, *Lymnaea stagnalis*, with maternal transcriptomes across the animal kingdom, it was found that the 5-10% of maternal mRNAs conserved across phyla consisted primarily of functions such as nucleotide binding, protein degradation and activities associated with the cell cycle [26]. Indeed, in our analysis via WGCNA, we found support for significantly enriched GO terms (Table S2) commonly associated with cell cycle, biosynthesis, transcription, signaling, and protein processing functions. This reinforces results from a prior GO analysis via enrichment of genes expressed in both female and male gametes with 100TPM threshold from these same three unfertilized egg samples [33].

High representation of mRNAs involved in DNA damage repair in the maternal complement (e.g., DNA damage repair in the maternal complement (e.g., DNA damage checkpoint [GO:0000077], DNA repair [GO:0006281], recombinational repair [GO:0000725], inter-strand cross-link repair [GO:0036297], cellular response to ionizing radiation [GO:0071479], and positive regulation of apoptotic process [GO:0043065]) likely prevents the proliferation of damaged cells during the rapid cell cycles occurring during the first few hours of development. Embryonic development is particularly sensitive to





DNA damage, as the accumulation of damaged cells can quickly lead to embryonic death [73–75]. Embryos of broadcast spawning species, especially those of vertical transmitters that pass down symbionts in the eggs [76], are particularly at risk of DNA damage due to exposure to ultraviolet (UV) radiation [77–80]. UV radiation can damage DNA both indirectly, through the production of reactive oxygen species that can lead to the oxidation of nucleotides, and directly by dimerization of neighboring pyrimidines [81–83]. Prolonged exposure to UV-radiation during early development may necessitate maternal frontloading of DNA repair mechanisms in broadcast spawners [77–80]. For example, it has been shown that anchovy eggs spawned under light and dark conditions have an innate capacity for UVB-induced DNA repair, but that diel cycles of DNA repair mechanisms (likely zgotically-derived) did not occur until approximately six hours post-fertilization [80]. Furthermore, Antarctic meroplankton species that spawn during the Austral summer have been shown to have a higher capacity for DNA damage repair than species that spawn during the winter [79]. As a tropical broadcast spawning species with vertical transmission of symbionts [67, 84],

*Montipora capitata* embryos are particularly susceptible to DNA damage incurred from UV radiation and from ROS production by their endosymbionts [76, 85–87], which may partially explain the enrichment of DNA repair functions in the *M. capitata* maternally-provisioned oocyte transcriptome.

While the gene expression time course analyzed here provides insight into the maternal complement, we acknowledge that our analysis may not be comprehensive. The expression of maternal mRNAs in the embryo is primarily regulated through the modulation of the poly-A tail [23, 39, 41, 88, 89], with elongation of the poly-A tail leading to transcriptional activation and shortening of the poly-A tail leading to de-activation [23, 39, 41, 88, 89]. As our sequence library preparation (polyA enrichment) primarily excludes un-adenylated mRNAs, it is likely that some un-adenylated transcripts, potentially related to stress-response functions in the maternal mRNA complement, were not fully captured in these libraries. Absolute determination of maternal mRNAs (adenylated and un-adenylated) in the oocytes could be better served via ribosomal RNA depletion library preparation prior to sequencing, as suggested in [40].

### MZT timeline

With the exception of non-parthenogenetic insects, in most metazoans, fertilization triggers egg activation and is associated with the elimination of approximately 30% of maternal transcripts [39, 49, 90, 91]. The clearance of these maternal mRNAs marks the first event of the MZT [39, 49]. In *M. capitata*, a wave of maternal transcript degradation, marking the beginning of the MZT, appears to be started by 1–4 cell divisions (4 hpf). As sampling time increases beyond 1 hpf, in the maternal complement (modules grey, coral1, lightslateblue, mediumpurple3, antiquewhite2, antiquewhite4, thistle, honeydew1, and midnightblue) the correlation of eigengene expression with life stage shows a change in direction from positive to negative (Fig. 3), supporting the downregulation of transcripts that are associated with unfertilized and fertilized eggs. This is further evidenced by the significant downregulation of maternally-provisioned Cyclin-B mRNAs starting by 4 hpf (Fig. 6i), and a peak in the expression of Smaug (Fig. 6ii) between cleavage (4 hpf) and prawn chip (9 hpf), signaling the de-adenylation of maternal transcripts during this period. After the clearance of maternal mRNAs between fertilization and cleavage, the clustering of life stages by module eigengene correlation (Fig. 3) supports two temporal peaks in expression, suggesting that in *M. capitata*, the MZT progresses in two waves. The first wave appears to occur between 4 and 14 hpf, as indicated by the clustering of eigengene-lifestage correlations of cleavage, prawn chip, and early gastrula samples, while the clustering of mid-gastrula, late gastrula, and planula samples support a second wave occurring between 22 hpf and 9 dpf. While we hypothesize the ZGA is ongoing until settlement, as indicated by the unique expression pattern in the adult transcriptome, the transfer of developmental control to the zygote, marking the conclusion of the MZT, likely occurs much earlier. However, the discrimination of transcripts as “maternal” or “zygotic” in origin can be complicated because the activation of existing mRNAs by polyadenylation cannot be distinguished from the activation of newly-transcribed mRNAs, as discussed above. As such, we cannot distinguish the absolute end of the MZT, which is marked by the transition of developmental control from maternal to zygotic molecular machinery [39]. In the future, the termination of the MZT could be more fully captured through the characterization of Single Nucleotide Polymorphisms (SNPs) in the maternal and paternal transcriptomes, as described in [92], zgotically-derived transcripts can be identified by the presence of paternal SNPs. For corals, this would best be accomplished through making crosses between eggs and sperm from known parental colonies.

Taken in concert, the expression profiles of key developmental enzymes provide a temporal progression

illustrating the molecular mechanisms underlying zygotic genome activation in *M. capitata*. Peaks in the expression of Cyclin-B, Smaug, Kaiso, and Sox2 (Fig. 6i–3iv) indicate that maternal mRNA clearance and ZGA during the first wave of the MZT in *M. capitata* is mediated by maternal mRNAs. Indeed, the polyadenylation of maternal mRNAs after fertilization have been implicated in both maternal mRNA degradation [45, 46, 51] and ZGA [50, 53, 93] in bilaterians. The expression profiles of these enzymes during *M. capitata* and sea anemone (*Nematostella vectensis*) MZT [94] supports that maternal regulation of the first MZT wave is a conserved feature from basal metazoan development. Further, the peak in maternal transcriptional regulator Kaiso in the prawn chip samples (9 hpf), followed by the peak in maternal transcription factor Sox2 in the early gastrula samples (14 hpf) suggests that ZGA is repressed until early gastrulation in *M. capitata*. This is further supported by a substantial increase in the correlation of eigengene expression with time during and after the early gastrula stage in module clusters 5, 8, and 9 (Fig. 3Y axis), and a gradual shift in dominance of the enrichment of RNA and protein processing-related biological processes in the cleavage stage (Table S1C) to terms related to transcription in the early gastrula stage (Table S1E).

Several factors including nucleocytoplasmic ratio, chromatin accessibility, cell cycle destabilization, and maternal mRNA degradation have been implicated in the initiation of zygotic transcription [39]. In *N. vectensis*, yeast, and the African clawed frog cell cycle destabilization appears to facilitate the activation of zygotic transcription [94–97]. In *Nematostella vectensis*, this is shown by a decrease in Cyclin-B between 2 and 7 hpf followed by ZGA between 7 and 12 hpf. In *M. capitata*, Cyclin-B also decreases after cleavage (4 hpf), showing cell cycle destabilization. While cell cycle destabilization likely plays a role in ZGA in *M. capitata*, increasing chromatin accessibility (see “Epigenetic state for ZGA”) and the weakening of maternal transcriptional repression through the de-adenylation of maternal mRNAs, indicated by a peak in RNA binding protein Smaug between 4 and 9 hpf, likely also contribute to ZGA.

While the first wave of the MZT appears to be regulated through maternal mRNAs, a shift in positive eigengene correlations from modules in cluster 4 to modules in clusters 8 and 9 between early and mid-gastrulation (Fig. 3) shows the upregulation of genes that were either previously lowly expressed, or completely unexpressed between 14 and 22 hpf. A significant decrease in the expression of Sox2 during this transition indicates that zygotic, rather than maternal, transcription factors may be implicated, supporting the identification of this temporal peak in gene expression as the second wave of

ZGA. While expression of Wnt8 and TBXT peaks during this second wave is expected due to their roles in bauplan specification during gastrulation [94, 98, 99], their continual upregulation despite the downregulation of Sox2 suggests that they may be zygotically transcribed in *M. capitata*, as shown in *Xenopus* and in sea urchins. [53, 54, 93]. Besides bauplan specification, similarly to *Nematostella vectensis* [94] ion/peptide transport and cell signaling-related processes are upregulated during the second wave (Fig. 4C). Interestingly, we also see upregulation of GO terms related to response to environmental stress (i.e. xenobiotic transport [GO:0042908] and response to oxidative stress [GO:0006979]), as well as terms related to symbiosis (i.e. reduction of food intake in response to dietary excess [GO:0002023], response to glucose [GO:0009749], multicellular organism growth [GO:0035264], glycerolipid biosynthetic process [GO:0045017], carbohydrate biosynthetic process [GO:0016051] and glycolipid biosynthetic process [GO:0009247]), in the late gastrula (Table S1G) and planula stages (Table S1H), suggesting that by late gastrulation (36 hpf) *M. capitata* embryos are able to sense the environment and tune transcription in response to environmental stimuli. The combined loss of maternal defenses at the start of the MZT and low homeostatic capacity has been suggested to contribute to embryo vulnerability in fish, sea urchins, and other marine broadcast spawners [6, 7, 18–22]. As such, the period ranging from the start of maternal mRNA clearance ( $\leq 4$  hpf) to transcriptional plasticity in response to stimuli ( $\leq 36$  hpf) may represent the most sensitive stages and thus present a critical bottleneck in *M. capitata* early development.

While the timing and scale of maternal transcript degradation and ZGA during the MZT is shown to vary between species [40], the timing of MZT described here is remarkably similar to other anthozoans with similar developmental courses. For example, gene expression time courses during *Acropora digitifera* [34], *Acropora millepora* [35], and *Nematostella vectensis* [94] development suggest the onset of ZGA occurs within the first 24 h of development. In *A. digitifera*, clustering of the expression patterns in early life stages mirrored the clustering of life stages here [34]. In *A. digitifera*, the prawn chip (9 hpf) and early gastrula (14 hpf) stages grouped together, and late gastrula (48 hpf), planula (96 hpf), and adult stages grouped together [34]. Likewise, a shift in gene expression between cleavage (4 hpf) and gastrulation (22 hpf) in *A. millepora* supports the onset of ZGA during the early gastrula stage [35]. The sea anemone, *N. vectensis*, also shows similar gene expression dynamics during the MZT to *M. capitata*, with maternal degradation in *N. vectensis*, potentially occurring between cleavage (2 hpf) and prawn chip (7 hpf), and ZGA beginning by the onset of gastrulation (12 hpf) [94]. While the genera

*Acropora* and *Montipora* belong to the same family of reef-building corals (Acroporidae), *N. vectensis* belongs to different sub-class in the anthozoan lineage. However, the four species are all broadcast spawning anthozoans with similar developmental timelines and embryonic courses (i.e. form a prawn chip) [34, 68, 100, 101], suggesting that the timing of the MZT, and potentially the molecular mechanisms underlying MZT regulation, may be evolutionarily conserved within cnidarians. If so, this would have important implications for research on carryover effects and transgenerational plasticity, which depends heavily on the rapid accumulation of knowledge surrounding gene expression regulation and epigenetic state during reef-building coral development [56, 102]. Much of this knowledge has already been generated in the model cnidarian, *N. vectensis* [94, 103], and may provide a strong baseline for such studies.

#### Epigenetic state for ZGA

Epigenetic programming during the MZT has a key role in the repression and activation of zygotic transcription [40, 55], and additionally presents a potential mechanism for heritable, non-genetic phenotypic plasticity allowing for the rapid acclimatization of reef-building corals to rapid environmental change [56, 102]. However, epigenetic programming during the MZT has primarily been described in mammals and non-mammalian vertebrates and likely differs greatly from epigenetic programming during the development of reef-building corals and other invertebrates [104–107]. In mammals, parental epigenetic marks are erased twice during the MZT, and are replaced with marks that are necessary for embryo viability [108, 109], making epigenetic inheritance rare in mammals [104]. However, nonmammalian vertebrates appear to inherit the paternal methylome, reprogramming the maternal methylome to match before ZGA begins [110]. Epigenetic programming during the MZT is only starting to be understood in invertebrates, as historic invertebrate models (e.g., *Drosophila melanogaster* and *Caenorhabditis elegans*) lack cytosine DNA methylation almost entirely [110], and the invertebrate species studies thus far (e.g., sponges, honey bees, ctenophores, sea urchins, and sea squirts) appear to lack epigenetic reprogramming entirely [104, 105, 107, 111]. Indeed, a recent work on reef-building corals shows that epigenetic marks may be transferred between generations, and suggests that the paternal and maternal methylomes appear to contribute equally to the methylome of the offspring [106].

Generally, in vertebrates and mammals in particular, chromatin structure is relatively open prior to ZGA, and decreases in accessibility during the MZT as DNA methylation increases [40, 112, 113]. While chromatin structure condenses over time, local DNA accessibility

remains open during ZGA to facilitate the activation of specific genes [40, 112, 113]. However, this appears to not be the case for invertebrates. For example, the bivalves *Crassostrea gigas* and *Patinopecten yessoensis*, are shown to have heavy methylation in the oocytes, which peaks during the blastula/gastrula stage before declining and remaining at stable levels for the remainder of development [114, 115]. In other invertebrates, such as honeybees and sponges, DNA methylation levels tend to be stable throughout early development [105, 107, 111]. While methylation levels were not measured here, significant changes in the expression enzymes linked to methylation activity may hint to the epigenetic landscape necessary for ZGA in *M. capitata*.

The expression patterns of the key epigenetic regulators assessed here provide the first data characterizing the dynamics of genes involved in epigenetic programming underlying the MZT in *M. capitata* and further sets the stage for future research on the mechanisms of epigenetic inheritance in reef-building corals. Here, significant changes in the expression of six out of seven of these genes between the samples representing fertilized eggs (1 hpf) and cleaving embryos (4 hpf) correlates with the start of the MZT. DNMT3a and TET1 responsible for *de novo* methylation and methylation removal, respectively, are two of these six enzymes that change between 1 and 4 hpf and then maintain stable expression for the remainder of development, suggesting that the embryo methylome programming occurs during this short window. Completion of methylome programming may be necessary for the start of the MZT, as it has been shown in zebrafish that harmonization of the paternal and maternal methylomes is necessary for the successful progression of ZGA [116]. A sharp decrease in transcriptional repression through MBD2/3 by the cleavage stage may signal the completion of methylome harmonization. Accordingly, research on the mechanisms underlying the transfer of epigenetic marks from parent to offspring and harmonization of the embryonic methylome in reef-building corals may benefit from frequent sampling and quantification of methylation between fertilization (0 hpf) and cleavage (4 hpf).

Several mechanisms of epigenetic modification appear to set the stage for ZGA after embryonic methylome programming in *M. capitata*. Firstly, passive (de)-methylation is likely to be the primary regulator of DNA methylation during the MZT due to rapid cell division. While expression of DNMT3a (*de novo* methylation) and TET1 (methylation removal) stabilizes after cleavage, DNMT1 (methylation maintenance) shows significant expression fluctuations during the MZT. After initial down-regulation of DNMT1 prior to cleavage, methylation maintenance activity appears to remain stable through the first wave of the MZT. However, it is

significantly downregulated again at the start of the second wave of the MZT (during mid-gastrulation), prior to returning to previous expression levels. This depression of methylation maintenance provides support to the hypothesis that increasing local chromatin accessibility facilitates the activation of specific loci [40, 114, 117]. Increasing local chromatin accessibility is further evidenced by upregulation of BRG1 from pre-cleavage (1 hpf) until the prawn chip stage (9 hpf), which may additionally facilitate the start ZGA during early gastrulation. Other mechanisms of epigenetic modification with putative roles in the MZT [49], including histone arginine and lysine methylation [GO:0034969, GO:0034968], histone acetylation [GO:0016573], and protein ADP-ribosylation [GO:0006471] were enriched in the maternal complement (Table S2) and during the first wave of ZGA (Table S3), supporting multiple conserved mechanisms of epigenetic regulation of the MZT between model organisms and *M. capitata*.

## Conclusions

As anthropogenic climate change continues to alter the marine environment at an accelerating and unprecedented rate, it is more important than ever to understand the mechanisms underlying the resilience and sensitivity of vulnerable ontogenetic stages. Future research evaluating potential avenues of rapid acclimatization in reef-building corals, including parental effects, carryover effects, and cross-generational plasticity, relies on the generation of baseline knowledge on parental molecular provisioning, the epigenetic landscape during early development, and temporal gene expression dynamics during the MZT [56]. Here, our characterization of maternal mRNA provisioning and the maternal-to-zygotic transition in *Montipora capitata* sets the stage for these future studies and additionally identifies cleavage ( $\leq 4$  hpf) through late gastrulation ( $\leq 36$  hpf) as a potential critical window during *Montipora capitata* development.

## Methods

### Specimen collection

*M. capitata* egg-sperm bundles were collected (Hawaii Department of Land & Natural Resources Special Activity Permit 2018-50) from the reef adjacent to the Hawaii Institute of Marine Biology (HIMB) Kāneʻohe Bay, Hawaii (21°25'58.0"N 157°47'24.9"W) during their release on June 13, 2018. *M. capitata* adult fragments were collected from the reef adjacent to HIMB and Reef 11.13 (1°27'07.7"N 157°47'40.3"W) and acclimated in ambient conditions (27 °C, ~480  $\mu$ atm) mesocosm tanks for two weeks prior to snap freezing on September 22nd, 2018, at ~13:00 h.

### Sample collection and preservation

Samples were collected from each replicate culture bin at nine time points. See Additional File 1 for details on the experimental set-up. Sampling times (Fig. 1) represent distinct developmental stages including unfertilized eggs (immediately after bundle breakup;  $n=3$ ) and multiple stages at various hours post fertilization (hpf), putatively fertilized eggs (1 hpf, denoted as fertilized eggs throughout the manuscript;  $n=2$ ), cleavage (4 hpf;  $n=3$ ), prawn chip (9 hpf;  $n=3$ ), early gastrula (14 hpf;  $n=3$ ), mid-gastrula (22 hpf;  $n=2$ ), late gastrula (1.5 days post fertilization;  $n=2$ ), and planula (9 days post fertilization at ~12:00 h, dpf;  $n=3$ ). Molecular samples, 300  $\mu$ L/replicate of gametes, embryos, and larvae, or whole adult fragments (~5  $\times$  7 cm;  $n=3$ ), were snap-frozen in liquid nitrogen and stored at -80 °C until RNA extraction.

### RNA extraction, sequencing, and read processing

Developmental samples were digested at 55 °C in 300  $\mu$ L DNA/RNA Shield for two to three-and-a-half hours and centrifuged at 2200 rcf for one minute to separate the remaining solids. A small clipping of each adult sample was vortexed in 2 mL 0.5 mm glass bead tubes (Fisher Scientific Catalog No. 15-340-152) with 1 mL of DNA/RNA Shield for two minutes at high speed. Total RNA was extracted from each supernatant with the Zymo Quick-DNA/RNA™ Miniprep Plus Kit (Zymo Research, Irvine, CA, USA) following the manufacturer's protocol for tissue samples. RNA was quantified with a ThermoFisher Qubit Fluorometer and quality was measured with an Agilent TapeStation 4200 System. Total RNA samples were then sent to Genewiz (South Plainfield, New Jersey, USA) for library preparation and sequencing. cDNA libraries were constructed following the TruSeq Stranded mRNA Sample Preparation Protocol (Illumina) using polyA enrichment and were sequenced on a HiSeq instrument at Genewiz targeting 15 million reads per sample.

Read quality was assessed with FastQC (v0.11.8) and compiled with MultiQC [118, 119]. Following quality assessment, reads were trimmed to remove adapters and low-quality reads using FastP [120]. Sequences were filtered for quality applying a five base pair sliding window to remove reads with an average quality score of 20 or less. The sequences retained had quality scores greater than or equal to 20 in at least 90% of bases and a sequence length greater than or equal to 100 bases. Read quality was re-assessed with FastQC (v0.11.8) and then aligned and assembled using HISAT2 in the stranded paired-end mode [121] in combination with StringTie in the stranded setting (v2.1) [122]. Following assembly, mapped GFFs were merged for assessment of precision and accuracy and compared to the *M. capitata* reference assembly GFF using GFFcompare (v0.11.5) [123]. A gene

count matrix was then generated from the GFFs using the StringTie *prepDE* python script [122].

### Global gene expression analysis

All gene expression analyses were performed in RStudio (v1.3.959), using R version 4.0.2 [124]. First, genes with low overall expression were filtered using GeneFilter's (v1.70.0) *pOverA* filter function [125]. Given that the smallest number of replicates was two, genes with fewer than 10 counts in at least 2 out of 24 samples (*pOverA* 0.083, 10) were excluded from further analysis. Counts were then normalized with DESeq2's (v1.28.1) variance stabilizing transformation (vst) [126] after confirming that all size factors were less than 4. To visualize experiment-wide patterns in gene expression, a principal coordinates analysis (PCA) based on sample-to-sample distances was performed on the vst-transformed gene counts using the DESeq2 *plotPCA* function.

Transformed counts were used for a Weighted Gene Co-expression Network Analysis (WGCNA) [127]. WGCNA analysis is a data reduction approach that assigns genes with similar expression patterns to co-expression groups called modules. Using this technique allowed us to identify groups of genes, called modules, with similar expression profiles across developmental time. All samples were used for WGCNA after visually checking for outliers in an unrooted hierarchical tree built with the R stats *hclust* "average" function [124]. To construct a topological overlap matrix similarity network to assess gene expression adjacency, the WGCNA *pickSoftThreshold* function was used to explore soft threshold values from 1 to 30. A soft thresholding power of 23 (scale-free topology fit index of 0.85) was chosen and used to construct a topological overlap matrix similarity network using signed adjacency. Modules were identified from this topological overlap matrix similarity network using the WGCNA package *dynamicTreeCut* function with the settings *deepSplit* 2, and minimum module size 30. Modules with greater than 85% eigengene similarity were merged and the resulting finalized 34 modules were used for expression plotting, module-trait correlation, and gene ontology enrichment analysis.

Clustering of WGCNA expression modules by eigengene dissimilarity was achieved using the *hclust* "average" method. Additionally, module-trait correlation was assessed by calculating gene significance (the correlation between the gene and the time point) and module membership (the correlation of the module eigengene and the gene expression profile) [127]. Correlation values were plotted as a heatmap using the *complexHeatmap* package [128]. Modules with a p-value less than or equal to 0.05 were considered significantly correlated with a time point (Fig. 3). Finally, the distinct expression phases in the MZT were identified by clustering life stages by

their module-trait correlation using the *hclust* “average” method to build an unrooted hierarchical tree. Additionally, the 34 modules were manually split into 9 clusters using the *complexHeatmap* *row\_split* function to highlight waves in gene expression through time [128]. This cutoff was chosen based on the *hclust* clustering of the module eigengenes by dissimilarity with a cut height of approximately 0.44 [128]. Expression profile plots were generated for each cluster by plotting the mean eigengene expression value of each of the replicate samples per time point for each module (Fig. S1).

### Gene ontology enrichment analysis

Gene ontology enrichment analysis was performed to characterize the functions provided by the maternal mRNA complement and the changes in the embryo's functional toolkit during the MZT. To provide up-to-date gene ontology (GO) annotation for functional enrichment analysis, functional annotation was undertaken using DIAMOND, InterProScan, Blast2GO, and Uniprot [129–132]. See Additional File 2 for details (Table S7). Using the module-life stage correlations in Fig. 3, modules that were significantly positively correlated with a specific life stage were identified for GO enrichment analysis. Each identified module was also included in GO enrichment analysis for its corresponding developmental cluster (i.e. the maternal complement, adult complement, or the first or second wave of the MZT; Fig. 3). The genes comprising each module within a group of interest were compiled and subsetted from the counts matrix for functional enrichment analysis. The R package *Goseq* (v1.40.0) was used to perform GO term enrichment analysis, therefore taking gene length bias into account [133] when determining the functional profiles of each group. Subsequently, the R package *simplifyEnrichment* (v0.99.4) was used to visualize the enriched biological process and molecular function terms for each group [134]. With this package, a semantic similarity matrix for a set of GO terms is generated based on GO tree topology, which is then used to cluster the terms with a ‘binary cut’ [134]. The functional characteristics of each cluster is then displayed with a word cloud. Accordingly, we used the *simplifyEnrichment* with the ‘Relevance’ measure of similarity to calculate semantic similarity and display the dominant biological processes and molecular functions enriched in the maternal and adult complements, each phase of the MZT, and each life [134, 135].

### Expression of key developmental and epigenetic biomarkers

While WGCNA provides a global view of gene expression dynamics during the MZT, examining enzymatic expression of key MZT biomarkers provides a more

detailed view of this process. In light of this, we examined the expression of enzymes linked to maternal transcript degradation (Cyclin-B, and Smaug), suppression of zygotic transcription (Kaiso), and zygotic genome activation (Sox2, Wnt8, and TBXT), as well as the expression of enzymes that provide transcriptional regulation capacity during the MZT (DNMT1, DNMT3A, TET1, MBD2, MBD3, UHRF1, and BRG1). A local alignment search of the *M. capitata* transcriptome was used to find the enzymes of interest for expression analysis [69, 132]. See Additional File 1 for details. Due to the robust alignment of the top hits to the *M. capitata* genome, and the similar expression profiles of comparable hits, vst-transformed expression was plotted only for each enzyme's top hit (Table S8). In plotting the expression of these developmental and epigenetic biomarkers, we gain further support on the timeline of and the epigenetic state necessary for the MZT.

The expression profiles of the top developmental and epigenetic enzymes are supported with differential expression analysis. To test for changes in expression between subsequent time points, a DESeq2 dataframe was first constructed using all genes that passed the *pOverA* (*pOverA* 0.083, 10) filter described above [125, 126]. Differential expression analysis was then performed on filtered counts using the Wald model to estimate pairwise differences in gene expression between subsequent life stages [126]. Finally, significant changes in the expression of the developmental and epigenetic biomarkers were extracted from the DESeq2 results, by filtering for the top hit for each enzyme and applying a cut-off of  $>|1| \log_2 \text{FoldChange}$  and  $\text{padj} < 0.05$ . These results indicate when transcriptional regulation occurs for these key enzymes, providing further support for their activity during the early development of *M. capitata*.

### Supplementary information

The online version contains supplementary material available at <https://doi.org/10.1186/s12864-021-08114-y>.

**Additional file 1**

**Additional file 2**

### Acknowledgements

We dedicate this work to our colleague and friend Dr. Diane Adams. We would like to thank the faculty and staff of the Hawai'i Institute of Marine Biology and the University of Rhode Island Computing.

### Authors' contributions

HMP and TM designed and provided financial support for the study; ES MN, VS, MS, and HMP conducted the field work and collected the samples; EC conducted the molecular work; EC and HMP analyzed the data; EC, HMP, and ES wrote the manuscript, all authors contributed to the final manuscript. The author(s) read and approved the final manuscript.

**Funding**

This work was funded by BSF grant 2016321 to HMP and TM. This work was also partially supported by the USDA National Institute of Food and Agriculture, Hatch Formula project accession number 1017848.

**Availability of data and materials**

All raw data associated with early developmental samples that generated for this project has been deposited in the NCBI repository and can be accessed with Bioproject accession IDs, PRJNA731596 (adult) and PRJNA616341 (all other time points). Additionally, all code used for transcriptomic analysis has been deposited on Zenodo and is publicly available (DOI: 10.5281/zenodo.5636821).

**Declarations****Ethics approval and consent to participate**

Not applicable.

**Consent for publication**

Not applicable.

**Competing interests**

The authors declare that they have no competing interests.

**Author details**

<sup>1</sup>Department of Biological Sciences, University of Rhode Island, Rhode Island, USA. <sup>2</sup>Department of Marine Biology, The Leon H. Charney School of Marine Sciences, University of Haifa, Haifa, Israel. <sup>3</sup>The Interuniversity Institute of Marine Science, 88103 Eilat, Israel. <sup>4</sup>Yale School of Medicine, Yale University, Connecticut, USA.

Received: 15 June 2021 Accepted: 18 October 2021

Published online: 11 November 2021

**References**

- Hughes TP, Barnes ML, Bellwood DR, Cinner JE, Cumming GS, Jackson JBC, et al. Coral reefs in the Anthropocene. *Nature*. 2017;546:82–90.
- Hughes TP, Tanner JE. Recruitment failure, life histories, and long-term decline of Caribbean corals. *Ecology*. 2000;81:2250–63.
- Cowen RK, Sponaugle S. Larval Dispersal and Marine Population Connectivity. *Ann Rev Mar Sci*. 2009;1:443–66.
- Ritson-Williams R, Arnold SN, Fogarty ND, Steneck RS, Vermeij MJA, Paul VJ. New perspectives on ecological mechanisms affecting coral recruitment on reefs. *Smithson Contrib Mar Sci*. 2009;38:437.
- Connell JH. Disturbance and recovery of coral assemblages. 1997. <https://link.springer.com/content/pdf/10.1007/s003380050246.pdf>.
- Byrne M. Global change ecotoxicology: Identification of early life history bottlenecks in marine invertebrates, variable species responses and variable experimental approaches. *Mar Environ Res*. 2012;76:3–15.
- Przeslawski R, Byrne M, Mellin C. A review and meta-analysis of the effects of multiple abiotic stressors on marine embryos and larvae. *Glob Chang Biol*. 2015;21:2122–40.
- Byrne M, Przeslawski R. Multistressor impacts of warming and acidification of the ocean on marine invertebrates' life histories. *Integr Comp Biol*. 2013; 53:582–96.
- Baird AH, Guest JR, Willis BL. Systematic and Biogeographical Patterns in the Reproductive Biology of Scleractinian Corals. *Annu Rev Ecol Syst*. 2009; 40:551–71.
- Harrison PL. Sexual Reproduction of Scleractinian Corals. In: Dubinsky Z, Stambler N, editors. *Coral Reefs: An Ecosystem in Transition*. Dordrecht: Springer Netherlands; 2011. p. 59–85.
- Wilson JR, Harrison PL. Settlement-competency periods of larvae of three species of scleractinian corals. *Mar Biol*. 1998;131:339–45.
- Albright R, Mason B. Projected near-future levels of temperature and pCO<sub>2</sub> reduce coral fertilization success. *PLoS One*. 2013;8:e56468.
- Albright R, Mason B, Miller M, Langdon C. Ocean acidification compromises recruitment success of the threatened Caribbean coral *Acropora palmata*. *Proceedings of the National Academy of Sciences*. 2010;107:20400–4.
- Yuan X, Yuan T, Huang H, Jiang L, Zhou W, Liu S. Elevated CO<sub>2</sub> delays the early development of scleractinian coral *Acropora gemmifera*. *Sci Rep*. 2018; 8. doi:<https://doi.org/10.1038/s41598-018-21267-3>.
- Albright R, Langdon C. Ocean acidification impacts multiple early life history processes of the Caribbean coral *Porites astreoides*. *Glob Chang Biol*. 2011; 17:2478–87.
- Nakamura M, Ohki S, Suzuki A, Sakai K. Coral larvae under ocean acidification: Survival, metabolism, and metamorphosis. *PLoS One*. 2011;6. doi:<https://doi.org/10.1371/journal.pone.0014521>.
- Rivest EB, Hofmann GE. Responses of the metabolism of the larvae of *Pocillopora damicornis* to ocean acidification and warming. *PLoS One*. 2014; 9. doi:<https://doi.org/10.1371/journal.pone.0096172>.
- Byrne M, Ho M, Selvakumaraswamy P, Nguyen HD, Dworjanyn SA, Davis AR. Temperature, but not pH, compromises sea urchin fertilization and early development under near-future climate change scenarios. *Proc Biol Sci*. 2009;276:1883–8.
- Ericson JA, Lamare MD, Morley SA, Barker MF. The response of two ecologically important Antarctic invertebrates (*Sterechinus neumayeri* and *Parborlasiya corrugatus*) to reduced seawater pH: effects on fertilisation and embryonic development. *Mar Biol*. 2010;157:2689–702.
- Ericson JA, Ho MA, Miskelly A, King CK, Virtue P. Combined effects of two ocean change stressors, warming and acidification, on fertilization and early development of the Antarctic echinoid *Sterechinus* ... *Polar Biol*. 2012. [https://sci-hub.do/https://idp.springer.com/authorize/casa?redirect\\_uri=https://link.springer.com/article/10.1007/s00300-011-1150-7&casa\\_token=K9-6id\\_XO1MAAAAARiKsA1G-leVeoWnBTyP3P\\_XBOEYLXeyc7TIF9PIZxgsLbFqcrzfGIBJA7RBZLE1OL1EEh\\_sZXdUseYGO](https://sci-hub.do/https://idp.springer.com/authorize/casa?redirect_uri=https://link.springer.com/article/10.1007/s00300-011-1150-7&casa_token=K9-6id_XO1MAAAAARiKsA1G-leVeoWnBTyP3P_XBOEYLXeyc7TIF9PIZxgsLbFqcrzfGIBJA7RBZLE1OL1EEh_sZXdUseYGO).
- Foo SA, Dworjanyn SA, Poore AGB, Byrne M. Adaptive capacity of the habitat modifying sea urchin *Centrostephanus rogersii* to ocean warming and ocean acidification: performance of early embryos. *PLoS One*. 2012;7: e42497.
- Dahlke FT, Lucassen M, Bickmeyer U, Wohlrab S, Puvanendran V, Mortensen A, et al. Fish embryo vulnerability to combined acidification and warming coincides with a low capacity for homeostatic regulation. *J Exp Biol*. 2020; 223 Pt 11. doi:<https://doi.org/10.1242/jeb.212589>.
- Stitzel ML, Seydoux G. Regulation of the oocyte-to-zygote transition. *Science*. 2007;316:407–8.
- Hamdoun A, Epel D. Embryo stability and vulnerability in an always changing world. *Proc Natl Acad Sci U S A*. 2007;104:1745–50.
- Ahi EP, Singh P, Lecaudey LA, Gessl W, Sturmbauer C. Maternal mRNA input of growth and stress-response-related genes in cichlids in relation to egg size and trophic specialization. *Evodevo*. 2018;9:23.
- Liu MM, Davey JW, Jackson DJ, Blaxter ML, Davison A. A conserved set of maternal genes? Insights from a molluscan transcriptome. *Int J Dev Biol*. 2014;58:501–11.
- Romney AL, Podrabsky JE. Transcriptomic analysis of maternally provisioned cues for phenotypic plasticity in the annual killifish, *Austrofundulus limnaeus*. *Evodevo*. 2017;8:6.
- Bernier C, Boidin-Wichlacz C, Tasiemski A, Hautekèete N, Massol F, Cuvillier-Hot V. Transgenerational Immune Priming in the Field: Maternal Environmental Experience Leads to Differential Immune Transfer to Oocytes in the Marine Annelid *Hediste diversicolor*. *Genes*. 2019;10. doi:<https://doi.org/10.3390/genes10120989>.
- Mommens M, Fernandes JMO, Tollefsen KE, Johnston IA, Babiak I. Profiling of the embryonic Atlantic halibut (*Hippoglossus hippoglossus* L.) transcriptome reveals maternal transcripts as potential markers of embryo quality. *BMC Genomics*. 2014;15:829.
- Amiri E, Herman JJ, Strand MK, Tarpy DR, Rueppell O. Egg transcriptome profile responds to maternal virus infection in honey bees, *Apis mellifera*. *Infect Genet Evol*. 2020;85:104558.
- Kim C-H, Kim EJ, Seo C, Nam YK. Transcriptome Analysis of Maternal Gene Transcripts in Unfertilized Eggs of *Misgurnus anguillicaudatus* and Identification of Immune-Related Maternal Genes. *Int J Mol Sci*. 2020;21. doi:<https://doi.org/10.3390/ijms21113872>.
- Davidson PL, Thompson JW, Foster MW, Moseley MA, Byrne M, Wray GA. A comparative analysis of egg provisioning using mass spectrometry during rapid life history evolution in sea urchins. *Evol Dev*. 2019;21:188–204.
- Van Etten J, Shumaker A, Mass T, Putnam HM, Bhattacharya D. Transcriptome analysis provides a blueprint of coral egg and sperm functions. *PeerJ*. 2020;8:e9739. doi:<https://doi.org/10.7717/peerj.9739>.
- Reyes-Bermudez A, Villar-Briones A, Ramirez-Portilla C, Hidaka M, Mikheyev AS. Developmental Progression in the Coral *Acropora digitifera* Is Controlled by Differential Expression of Distinct Regulatory Gene Networks. *Genome Biol Evol*. 2016;8:851–70.

35. Strader M, Aglyamova G, Matz M. Molecular characterization of larval development from fertilization to metamorphosis in a reef-building coral. *BMC Genomics*. 2018;19:1–17.
36. Chan WY, Chung J, Peplow LM, Hoffmann AA, van Oppen MJH. Maternal effects in gene expression of interspecific coral hybrids. *Mol Ecol*. 2021;30: 517–27.
37. Dahlke FT, Leo E, Mark FC, Pörtner H-O, Bickmeyer U, Frickenhaus S, et al. Effects of ocean acidification increase embryonic sensitivity to thermal extremes in Atlantic cod, *Gadus morhua*. *Glob Chang Biol*. 2017;23:1499–510.
38. Michalek-Wagner K, Willis BL. Impacts of bleaching on the soft coral *Lobophytum compactum*. II. Biochemical changes in adults and their eggs. *Coral Reefs*. 2001;19:240–6. doi:<https://doi.org/10.1007/pl00006959>.
39. Tadros W, Lipshitz HD. The maternal-to-zygotic transition: a play in two acts. *Development*. 2009;136:3033–42.
40. Vastenhouw NL, Cao WX, Lipshitz HD. The maternal-to-zygotic transition revisited. *Development*. 2019;146. doi:<https://doi.org/10.1242/dev.161471>.
41. Wu E, Vastenhouw NL. From mother to embryo: A molecular perspective on zygotic genome activation. In: *Current Topics in Developmental Biology*. Academic Press; 2020.
42. Despici V, Neugebauer KM. RNA tales – how embryos read and discard messages from mom. *Journal of Cell Science*. 2018;131:jcs201996. doi:<https://doi.org/10.1242/jcs.201996>.
43. Hamm DC, Harrison MM. Regulatory principles governing the maternal-to-zygotic transition: insights from *Drosophila melanogaster*. *Open Biol*. 2018;8: 180183.
44. Bazzini AA, Viso F, Moreno-Mateos MA, Johnstone TG, Vejnar CE, Qin Y, et al. Codon identity regulates mRNA stability and translation efficiency during the maternal-to-zygotic transition. *EMBO J*. 2016;35:2087–103.
45. Chen L, Dumelie JG, Li X, Cheng MH, Yang Z, Laver JD, et al. Global regulation of mRNA translation and stability in the early *Drosophila* embryo by the Smaug RNA-binding protein. *Genome Biol*. 2014;15:R4.
46. Tadros W, Goldman AL, Babak T, Menzies F, Vardy L, Orr-Weaver T, et al. SMAUG is a major regulator of maternal mRNA destabilization in *Drosophila* and its translation is activated by the PAN GU kinase. *Dev Cell*. 2007;12:143–55.
47. Ruzov A, Savitskaya E, Hackett JA, Reddington JP, Prokhortchouk A, Madej MJ, et al. The non-methylated DNA-binding function of Kaiso is not required in early *Xenopus laevis* development. *Development*. 2009;136:729–38.
48. Ruzov A, Dunican DS, Prokhortchouk A, Pennings S, Stancheva I, Prokhortchouk E, et al. Kaiso is a genome-wide repressor of transcription that is essential for amphibian development. *Development*. 2004;131:6185–94.
49. Li L, Lu X, Dean J. The maternal to zygotic transition in mammals. *Mol Aspects Med*. 2013;34:919–38.
50. Lee MT, Bonneau AR, Takacs CM, Bazzini AA, DiVito KR, Fleming ES, et al. Nanog, Pou5f1 and SoxB1 activate zygotic gene expression during the maternal-to-zygotic transition. *Nature*. 2013;503:360–4.
51. Benoit B, He CH, Zhang F, Votruba SM, Tadros W, Westwood JT, et al. An essential role for the RNA-binding protein Smaug during the *Drosophila* maternal-to-zygotic transition. *Development*. 2009;136:923–32.
52. Scholz CB, Technau U. The ancestral role of Brachyury: expression of Nembra1 in the basal cnidarian *Nematostella vectensis* (Anthozoa). *Dev Genes Evol*. 2003;212:563–72.
53. Gentsch GE, Spruce T, Owens NDL, Smith JC. Maternal pluripotency factors initiate extensive chromatin remodelling to predefine first response to inductive signals. *Nat Commun*. 2019;10:4269.
54. Smith J, Theodoris C, Davidson EH. A gene regulatory network subcircuit drives a dynamic pattern of gene expression. *Science*. 2007;318:794–7.
55. Potok ME, Nix DA, Parnell TJ, Cairns BR. Reprogramming the maternal zebrafish genome after fertilization to match the paternal methylation pattern. *Cell*. 2013;153:759–72.
56. Byrne M, Foo SA, Ross PM, Putnam HM. Limitations of cross- and multigenerational plasticity for marine invertebrates faced with global climate change. *Global Change Biology*. 2020;26:80–102. doi:<https://doi.org/10.1111/gcb.14882>.
57. Eirin-Lopez JM, Putnam HM. Marine Environmental Epigenetics. 2018. doi:<https://doi.org/10.1146/annurev-marine-010318>.
58. Howell CY, Bestor TH, Ding F, Latham KE, Mertineit C, Trasler JM, et al. Genomic imprinting disrupted by a maternal effect mutation in the Dnmt1 gene. *Cell*. 2001;104:829–38.
59. Ito S, Shen L, Dai Q, Wu SC, Collins LB, Swenberg JA, et al. Tet proteins can convert 5-methylcytosine to 5-formylcytosine and 5-carboxylcytosine. *Science*. 2011;333:1300–3.
60. Stancheva I, Meehan RR. Transient depletion of xDnmt1 leads to premature gene activation in *Xenopus* embryos. *Genes Dev*. 2000;14:313–27.
61. Bostick M, Kim JK, Estève P-O, Clark A, Pradhan S, Jacobsen SE. UHRF1 plays a role in maintaining DNA methylation in mammalian cells. *Science*. 2007; 317:1760–4.
62. Bird AP, Wolffe AP. Methylation-induced repression—belts, braces, and chromatin. *Cell*. 1999;99:451–4.
63. Hendrich B, Abbott C, McQueen H, Chambers D, Cross S, Bird A. Genomic structure and chromosomal mapping of the murine and human Mbd1, Mbd2, Mbd3, and Mbd4 genes. *Mamm Genome*. 1999;10:906–12.
64. Hendrich B, Guy J, Ramsahoye B, Wilson VA, Bird A. Closely related proteins MBD2 and MBD3 play distinctive but interacting roles in mouse development. *Genes Dev*. 2001;15:710–23.
65. Bultman SJ, Gebuhr TC, Pan H, Svoboda P, Schultz RM, Magnuson T. Maternal BRG1 regulates zygotic genome activation in the mouse. *Genes Dev*. 2006;20:1744–54.
66. Padilla-Gamiño JL, Weatherby TM, Waller RG, Gates RD. Formation and structural organization of the egg-sperm bundle of the scleractinian coral *Montipora capitata*. *Coral Reefs*. 2011;30:371–80.
67. Padilla-Gamiño JL, Gates RD. Spawning dynamics in the Hawaiian reef-building coral *Montipora capitata*. *Mar Ecol Prog Ser*. 2012;449:145–60.
68. Okubo N, Mezaki T, Nozawa Y, Nakano Y, Lien YT, Fukami H, et al. Comparative embryology of eleven species of stony corals (Scleractinia). *PLoS One*. 2013;8. doi:<https://doi.org/10.1371/journal.pone.0084115>.
69. Shumaker A, Putnam HM, Qiu H, Price DC, Zelzouk E, Harel A, et al. Genome analysis of the rice coral *Montipora capitata*. *Sci Rep*. 2019;9:2571.
70. Wong JM, Gaitán-Espitia JD, Hofmann GE. Transcriptional profiles of early stage red sea urchins (*Mesocentrotus franciscanus*) reveal differential regulation of gene expression across development. *Mar Genomics*. 2019;48: 100692.
71. Gildor T, Malik A, Sher N, Avraham L, Ben-Tabou de-Leon S. Quantitative developmental transcriptomes of the Mediterranean sea urchin *Paracentrotus lividus*. *Mar Genomics*. 2016;25:89–94.
72. Heyland A, Vue Z, Voolstra CR, Medina M, Moroz LL. Developmental transcriptome of *Aplysia californica*. *J Exp Zool B Mol Dev Evol*. 2011;316: 113–34.
73. Lim DS, Hasty P. A mutation in mouse rad51 results in an early embryonic lethal that is suppressed by a mutation in p53. *Molecular and Cellular Biology*. 1996;16:7133–43. doi:<https://doi.org/10.1128/mcb.16.12.7133>.
74. Ludwig DL, MacInnes MA, Takiguchi Y, Purtymun PE, Henrie M, Flannery M, et al. A murine AP-endonuclease gene-targeted deficiency with post-implantation embryonic progression and ionizing radiation sensitivity. *Mutat Res*. 1998;409:17–29.
75. Heyer BS, MacAuley A, Behrendtsen O, Werb Z. Hypersensitivity to DNA damage leads to increased apoptosis during early mouse development. *Genes Dev*. 2000;14:2072–84.
76. Baird AH, Yakovleva IM, Harii S, Sinniger F, Hidaka M. Environmental constraints on the mode of symbiont transmission in corals. *J Exp Mar Bio Ecol*. 2021;151499.
77. Epel D, Hemela K, Shick M, Patton C. Development in the floating world: defenses of eggs and embryos against damage from UV radiation. *Am Zool*. 1999;39:271–8.
78. Willis J, DeStephanis D, Patel Y, Gowda V, Yan S. Study of the DNA damage checkpoint using *Xenopus* egg extracts. *J Vis Exp*. 2012;e4449.
79. Malloy KD, Holman MA, Mitchell D, Detrich HW 3rd. Solar UVB-induced DNA damage and photoenzymatic DNA repair in antarctic zooplankton. *Proc Natl Acad Sci U S A*. 1997;94:1258–63.
80. Vetter RD, Kurtzman A, Mori T. Diel cycles of DNA damage and repair in eggs and larvae of northern anchovy, *Engraulis mordax*, exposed to solar ultraviolet radiation. *Photochem Photobiol*. 1999;69:27–33.
81. Ménéz Y, Dale B, Cohen M. DNA damage and repair in human oocytes and embryos: a review. *Zygote*. 2010;18:357–65.
82. Yu S-L, Lee S-K. Ultraviolet radiation: DNA damage, repair, and human disorders. *Mol Cell Toxicol*. 2017;13:21–8.
83. Cadet J, Wagner JR. DNA base damage by reactive oxygen species, oxidizing agents, and UV radiation. *Cold Spring Harb Perspect Biol*. 2013;5. doi:<https://doi.org/10.1101/cshperspect.a012559>.
84. Heyward AJ. Sexual reproduction in five species of the coral *Montipora*. Hawaii Institute of Marine Biology, Technical Report. 1986;37:170–8.
85. Nesa B, Baird AH, Harii S, Yakovleva I, Hidaka M. Algal symbionts increase DNA damage in coral planulae exposed to sunlight. *Zool Stud*. 2012;51:6.



86. Reef R, Dunn S, Levy O, Dove S, Shemesh E, Brickner I, et al. Photoreactivation is the main repair pathway for UV-induced DNA damage in coral planulae. *J Exp Biol.* 2009;212:2760–6.
87. Muller-Parker G, D'Elia CF, Cook CB. Interactions Between Corals and Their Symbiotic Algae. In: Birkeland C, editor. *Coral Reefs in the Anthropocene*. Dordrecht: Springer Netherlands; 2015. p. 99–116.
88. Barckmann B, Simonelig M. Control of maternal mRNA stability in germ cells and early embryos. *Biochim Biophys Acta.* 2013;1829:714–24.
89. Laver JD, Marsolais AJ, Smibert CA, Lipshitz HD. Chapter Two - Regulation and Function of Maternal Gene Products During the Maternal-to-Zygotic Transition in *Drosophila*. In: Lipshitz HD, editor. *Current Topics in Developmental Biology*. Academic Press; 2015. p. 43–84.
90. Runft LL, Jaffe LA, Mehlmann LM. Egg activation at fertilization: where it all begins. *Dev Biol.* 2002;245:237–54.
91. Coward K, Bromage NR, Hibbitt O, Parrington J. Gamete physiology, fertilization and egg activation in teleost fish. *Rev Fish Biol Fish.* 2002;12:33–58.
92. Harvey SA, Sealy I, Kettleborough R, Fenyes F, White R, Stemple D, et al. Identification of the zebrafish maternal and paternal transcripts. *Development.* 2013;140:2703–10.
93. Collart C, Owens ND, Bhaw-Rosun L, Cooper B, De Domenico E, Patrushev I, et al. High-resolution analysis of gene activity during the *Xenopus* mid-blastula transition. *Development.* 2014;141:1927–39. doi:<https://doi.org/10.1242/dev.102012>.
94. Helm RR, Siebert S, Tulin S, Smith J, Dunn CW. Characterization of differential transcript abundance through time during *Nematostella vectensis* development. *BMC Genomics.* 2013;14:266.
95. Rowicka M, Kudlicki A, Tu BP, Otwinowski Z. High-resolution timing of cell cycle-regulated gene expression. *Proc Natl Acad Sci U S A.* 2007;104:16892–7.
96. Audic Y, Anderson C, Bhatti R, Hartley RS. Zygotic regulation of maternal cyclin A1 and B2 mRNAs. *Mol Cell Biol.* 2001;21:1662–71.
97. Audic Y, Garbrecht M, Fritz B, Sheets MD, Hartley RS. Zygotic control of maternal cyclin A1 translation and mRNA stability. *Dev Dyn.* 2002;225:511–21.
98. Beddington RS, Rashbass P, Wilson V. Brachyury—a gene affecting mouse gastrulation and early organogenesis. *Dev Suppl.* 1992;157–65.
99. Herrmann BG, Labeit S, Poustka A, King TR, Lehrach H. Cloning of the T gene required in mesoderm formation in the mouse. *Nature.* 1990;343:617–22.
100. Fritzenwanker JH, Genikhovich G, Kraus Y, Technau U. Early development and axis specification in the sea anemone *Nematostella vectensis*. *Dev Biol.* 2007;310:264–79.
101. Kraus YA, Markov AV. Gastrulation in Cnidaria: The key to an understanding of phylogeny or the chaos of secondary modifications? *Biol Bull Rev.* 2017;7:7–25.
102. Putnam HM. Avenues of reef-building coral acclimatization in response to rapid environmental change. *J Exp Biol.* 2021;224 Pt Suppl 1. doi:<https://doi.org/10.1242/jeb.239319>.
103. Levitan S, Sher N, Brekhman V, Ziv T, Lubzens E, Lotan T. The making of an embryo in a basal metazoan: Proteomic analysis in the sea anemone *Nematostella vectensis*. *Proteomics.* 2015;15:4096–104.
104. Yagound B, Remnant EJ, Buchmann G, Oldroyd BP. Intergenerational transfer of DNA methylation marks in the honey bee. *Proc Natl Acad Sci U S A.* 2020. doi:<https://doi.org/10.1073/pnas.2017094117>.
105. Xu X, Li G, Li C, Zhang J, Wang Q, Simmons DK, et al. Evolutionary transition between invertebrates and vertebrates via methylation reprogramming in embryogenesis. *Natl Sci Rev.* 2019;6:993–1003.
106. Liew YJ, Howells EJ, Wang X, Michell CT, Burt JA, Idaghdour Y, et al. Intergenerational epigenetic inheritance in reef-building corals. *Nat Clim Chang.* 2020;10:254–9.
107. Harris KD, Lloyd JPB, Domb K, Zilberman D, Zemach A. DNA methylation is maintained with high fidelity in the honey bee germline and exhibits global non-functional fluctuations during somatic development. *Epigenetics Chromatin.* 2019;12:62.
108. Hales BF, Grenier L, Lalancette C, Robaire B. Epigenetic programming: from gametes to blastocyst. *Birth Defects Res A Clin Mol Teratol.* 2011;91:652–65.
109. Okano M, Bell DW, Haber DA, Li E. DNA methyltransferases Dnmt3a and Dnmt3b are essential for de novo methylation and mammalian development. *Cell.* 1999;99:247–57.
110. de Mendoza A, Lister R, Bogdanovic O. Evolution of DNA Methylome Diversity in Eukaryotes. *J Mol Biol.* 2019. doi:<https://doi.org/10.1016/j.jmb.2019.11.003>.
111. de Mendoza A, Hatleberg WL, Pang K, Leininger S, Bogdanovic O, Pflueger J, et al. Convergent evolution of a vertebrate-like methylome in a marine sponge. *Nat Ecol Evol.* 2019;3:1464–73.
112. Potok ME, Nix DA, Parnell TJ, Cairns BR. Germline epigenetics, and reprogramming in zebrafish early embryos. *Epigenetics Chromatin.* 2013;6:O23.
113. Zenk F, Loeser E, Schiavo R, Kilpert F, Bogdanović O, Iovino N. Germ line-inherited H3K27me3 restricts enhancer function during maternal-to-zygotic transition. *Science.* 2017;357:212–6.
114. Riviere G, Wu G-C, Fellous A, Goux D, Sourdain P, Favrel P. DNA Methylation Is Crucial for the Early Development in the Oyster *C. gigas*. *Marine Biotechnology.* 2013;15:739–53. doi:<https://doi.org/10.1007/s10126-013-9523-2>.
115. Li Y, Zhang L, Li Y, Li W, Guo Z, Li R, et al. Dynamics of DNA Methylation and DNMT Expression During Gametogenesis and Early Development of Scallop *Patinopecten yessoensis*. *Mar Biotechnol.* 2019;21:196–205.
116. Murphy PJ, Wu SF, James CR, Wike CL, Cairns BR. Placeholder Nucleosomes Underlie Germline-to-Embryo DNA Methylation Reprogramming. *Cell.* 2018;172:993–1006.e13.
117. Hershko AY, Kafri T, Fainsod A, Razin A. Methylation of HoxA5 and HoxB5 and its relevance to expression during mouse development. *Gene.* 2003;302:65–72.
118. Andrews S, et al. FastQC: a quality control tool for high throughput sequence data. 2010.
119. Ewels P, Magnusson M, Lundin S, Käller M. MultiQC: summarize analysis results for multiple tools and samples in a single report. *Bioinformatics.* 2016;32:3047–8.
120. Chen S, Zhou Y, Chen Y, Gu J. fastp: an ultra-fast all-in-one FASTQ preprocessor. *Bioinformatics.* 2018;34:i884–90.
121. Kim D, Paggi JM, Park C, Bennett C, Salzberg SL. Graph-based genome alignment and genotyping with HISAT2 and HISAT-genotype. *Nat Biotechnol.* 2019;37:907–15.
122. Pertea M, Pertea GM, Antonescu CM, Chang T-C, Mendell JT, Salzberg SL. StringTie enables improved reconstruction of a transcriptome from RNA-seq reads. *Nat Biotechnol.* 2015;33:290–5.
123. Pertea GM, Pertea M. GFF Utilities: GffRead and GffCompare. *F1000Res.* 2020;9. <https://www.ncbi.nlm.nih.gov/pmc/articles/pmc7222033/>.
124. R Core Team. R: A language and environment for statistical computing. 2013. <https://cran.microsoft.com/snapshot/2014-09-08/web/packages/dplR/vignettes/xdate-dplR.pdf>.
125. Gentleman R, Carey V, Huber W, Hahne F. genefilter: genefilter: methods for filtering genes from high-throughput experiments. 2020.
126. Love MI, Huber W, Anders S. Moderated estimation of fold change and dispersion for RNA-seq data with DESeq2. *Genome Biol.* 2014;15:550.
127. Langfelder P, Horvath S. WGCNA: An R package for weighted correlation network analysis. *BMC Bioinformatics.* 2008;9. doi:<https://doi.org/10.1186/1471-2105-9-559>.
128. Gu Z. Complexheatmap: Making complex heatmaps. R package version. 2015;1.
129. Buchfink B, Xie C, Huson DH. Fast and sensitive protein alignment using DIAMOND. *Nat Methods.* 2015;12:59–60.
130. Jones P, Binns D, Chang H-Y, Fraser M, Li W, McAnulla C, et al. InterProScan 5: genome-scale protein function classification. *Bioinformatics.* 2014;30:1236–40.
131. Götz S, García-Gómez JM, Terol J, Williams TD, Nagaraj SH, Nueda MJ, et al. High-throughput functional annotation and data mining with the Blast2GO suite. *Nucleic Acids Res.* 2008;36:3420–35.
132. UniProt Consortium. UniProt: a worldwide hub of protein knowledge. *Nucleic Acids Res.* 2019;47:D506–15.
133. Young MD, Wakefield MJ, Smyth GK, Oshlack A. Gene ontology analysis for RNA-seq: accounting for selection bias. *Genome Biol.* 2010;11:R14.
134. Gu Z, Huebschmann D. simplifyEnrichment: an R/Bioconductor package for Clustering and Visualizing Functional Enrichment Results. *Cold Spring Harbor Laboratory.* 2020;2020. <https://doi.org/10.1101/2020.10.27.312116>.
135. Schlicker A, Domingues FS, Rahmenführer J, Lengauer T. A new measure for functional similarity of gene products based on Gene Ontology. *BMC Bioinformatics.* 2006;7:302.

## Publisher's Note

Springer Nature remains neutral with regard to jurisdictional claims in published maps and institutional affiliations.