

RESEARCH ARTICLE

Open Access



# Outcome of vulvar reconstruction in patients with advanced and recurrent vulvar malignancies

Wei Zhang<sup>1</sup>, Ang Zeng<sup>2</sup>, Jiaxin Yang<sup>1</sup>, Dongyan Cao<sup>1</sup>, Xiaodong He<sup>3</sup>, Xiaojun Wang<sup>2</sup>, Yan You<sup>4</sup>, Jie Chen<sup>4</sup>, Jinghe Lang<sup>1</sup> and Keng Shen<sup>1\*</sup>

## Abstract

**Background:** The use of flaps in vulvar cancer-related reconstruction has been increasing, but few studies have evaluated the outcome and quality of life of patients after this surgery. The purpose of this study was to evaluate the outcomes of vulvar reconstruction using musculocutaneous/skin flaps in patients with advanced and recurrent vulvar malignancies.

**Methods:** Patients with vulvar malignancies who underwent vulvar reconstruction using different types of flaps were retrospectively reviewed. Patient outcomes were evaluated with a focus on quality of life and prognosis.

**Results:** Thirty-six patients were enrolled, 58.33 % of them used anterolateral thigh flap (ALT), 16.67 % of them used pudendal thigh flap (PTF), 11.11 % of them used deep omferior epigastric perforator (DIEP) and gracilis myocutaneous flap were used in 2.78 % of the patients, the other 11.11 % patients used two types of flaps. Eleven patients (30.56 %) developed complications, including 5 patients (13.89 %) with partial necrosis, 5 (13.89 %) with minimal wound dehiscence and 1 (2.78 %) with flap cellulitis. All patients who developed partial necrosis (13.89 %) underwent reoperation. The mean verbal rating scale score was 1.44 before reconstruction and 0.17 after surgery ( $P < 0.0001$ ). The mean performance status was 1.67 before surgery and improved to 0.31 after surgery ( $P < 0.0001$ ). The median overall follow-up time after vulvar reconstruction was 9 months. Twenty-one patients (58.3 %) developed recurrence at a median interval of 5 months after vulvar reconstruction. After a median follow-up time of 14 months, 41.7 % of the patients were living and disease-free. The 5-year survival of the 36 patients was 53.8 %.

**Conclusion:** Soft tissue reconstruction in patients undergoing resection of advanced/recurrent vulvar malignancies is associated with a low rate of postoperative complications, decreased pain, and improved functional status. Although the recurrence rate in this patient population is high, a reasonable proportion of patients who undergo resection for advanced/recurrent vulvar cancer and reconstructive surgery appear to benefit.

**Keywords:** Vulvar cancer, Vulvar reconstruction, Quality of life, Complications

\* Correspondence: pumch\_obgyn@126.com

<sup>1</sup>Departments of Obstetrics and Gynecology, Peking Union Medical College (PUMC) Hospital, Chinese Academy of Medical Sciences & Peking Union Medical College, Shuaifuyuan No.1, Dongcheng District, Beijing 100730, China  
Full list of author information is available at the end of the article

## Background

Surgery is the mainstay treatment for vulvar malignancies. However, vulvar malignancies often have a high risk of relapse that may reach 65 % at the scheduled follow-up [1]. Local recurrence is more common than distant metastasis in patients with larger tumors [2], and can be successfully treated by tumor excision or irradiation. However, multiple surgeries and radical excision often leaves a large defect without sufficient tissue for coverage, which delays wound healing and increases post-operative morbidity. All of these factors have an adverse impact on the patient's quality of life (QoL), which is generally accepted as an important outcome parameter, in addition to the long-term survival, mortality and complication-related morbidity [3]. Therefore, vulvar reconstruction should be considered after radical surgical treatment to reduce the morbidity and improve the patient's QoL.

In recent years, the use of myocutaneous/muscle flaps for reconstruction has increased in the treatment of gynecologic malignancies [4–6]. However, few studies have evaluated the outcomes and QoL of patients who have undergone this surgical treatment. In the present study, we evaluated the outcomes of different types of flaps used for vulvar reconstruction in patients with advanced and recurrent vulvar malignancies, focusing on the complications related to the flaps and on the QoL and survival of patients.

## Methods

From 1998 to 2013, patients with advanced and recurrent vulvar malignancies underwent vulvar reconstruction using myocutaneous or skin flaps at the Department of Obstetrics and Gynecology, Peking Union Medical College Hospital. The patients' outcomes were evaluated. Clinical data were collected and reviewed by searching the medical records, operative notes, hospital discharge records and outpatient clinic follow-up records. The histopathological diagnosis was made and then reviewed by two experienced pathologists. All 36 patients were re-staged according to the revised International Federation of Gynecology and Obstetrics (FIGO) stage 2009. Advanced vulvar cancer was defined as a FIGO stage of  $\geq$  III in this study. The study was approved by the ethics committee at Peking Union Medical College Hospital, Beijing, China. Informed consent was obtained in written from the all the participants in our study.

## Surgical technique

The surgery plan was established by preoperative and intraoperative consultation with plastic surgeons. Gynecologic oncologists, urologists and colorectal surgeons

performed extirpative surgery before reconstruction. The surgical margin was confirmed to be negative by frozen section during the surgery before reconstruction. Once the final defect was known, the plastic surgeon began to evaluate the size and extent of the defect to design the flaps for reconstruction. The laxity and quality of the perineal skin were also evaluated. After careful evaluation, different flap types were used for reconstruction. An anterolateral thigh (ALT) flap was designed and harvested as previously described using a protocol suggested by our team [4]. The other four flap types including pudendal thigh flap (PTF), deep inferior epigastric perforator (DIEP) flap, gracilis myocutaneous flap and transverse rectus abdominis musculocutaneous (TRAM) flap, were also harvested and used as previously described [7–9]. The selection of different types of flaps was based on the patients' history, including prior irradiation, history of vulvar surgery, history of cesarean section, and nature of vulvar defects.

## Post-operative care

All patients were required to undergo bed rest for 5 to 7 days after the operation and maintain hip-flexion and the genuflecting position to relieve the pressure on the flaps. The patients were then encouraged to participate in bedside walking. The plastic surgeon carefully checked the color and temperature of the flap every day until flap survival was confirmed. The Foley catheter remained in place for at least 7 days. Patients with close surgical margins [10], high-risk factors [10, 11] and patients with negative surgical margins according to frozen section during surgeries that turned into positive in post-operative pathological examinations were given post-operative adjuvant treatment.

## Follow-up plan

After discharge, a gynecologic oncologist and plastic surgeon followed up the patients at an outpatient clinic 1-month after surgery. The patients were then followed at the gynecologic oncology clinic every 3 months for the first 2 years and then every 6 months for 3–5 years. The follow-up evaluation involved a complete history, physical and gynecological examination, laboratory examination, and pelvic and abdominal ultrasonography. Biopsies were performed if recurrence was suspected. Local recurrence was confirmed by pathological examination, and distant metastasis was diagnosed by positron emission tomography-computed tomography (PET-CT) and/or computed tomography (CT). Progression-free survival (PFS) was defined as the time interval from the date of vulva reconstruction to the date of disease progression or recurrence. Overall survival (OS) was defined as the time interval from the date of the primary surgery

to the date of death or last contact. The follow-up deadline was 30 June, 2014.

### QoL and post-operative complications

The QoL assessment focused on disease-specific pain and performance status. The degree of pain was evaluated with a four-category verbal rating scale (VRS-4) (0 = no pain, 1 = mild pain, 2 = moderate pain, and 3 = severe or intense pain) [12, 13]. The performance status was determined using the Eastern Cooperative Oncology Group/World Health Organization/Zubrod (ZUBROD-ECOG-WHO) scale (0 = normal activity; 1 = symptoms, but nearly ambulatory; 2 = some bed time, but needs to be in bed for < 50 % of the normal daytime; 3 = needs to be in bed for > 50 % of the normal daytime and 4 = unable to get out of bed) [14]. The VRS-4 and performance status were evaluated before surgery and 1 month after surgery.

Plastic surgeons evaluated flap-associated complications during the hospital stay and after discharge from the hospital at the outpatient plastic surgery department. Postoperative complications were defined as major or minor according to a previous study [15]. Major complications included total or partial flap necrosis, major wound of dehiscence more than one-third of the incision length, and persistent dead space. Persistent dead space is defined as dead space requiring a supplementary reconstructive procedure during the follow-up period. Minor complications included minor dehiscence of less than one-third of the incision length that healed after debridement [15]. Hematoma, seroma, cellulitis and abscess were also considered complications. In this study, we considered complications requiring reoperation as major complications and those requiring debridement or dressing changes as minor complications. Necrosis was defined as clinical evidence of dead tissue due to circulatory ischemic factors [6]. Dehiscence was defined as the separation of surgical margins [6].

### Statistical analysis

The patient age, operation time, length of hospitalization, flap sizes, time of follow-up, survival curve and 5-year survival were statistically analyzed by SPSS software version 13.0 (SPSS, Inc., Chicago, IL, USA). Kaplan–Meier survival plots and Student's two-tailed t-test were used for paired data; the independent samples t test was also used. A P value of < 0.05 was considered statistically significant.

## Results

### Patients' characteristics

Forty flaps were performed in 36 patients. Basic demographic and clinical information are shown in Table 1, including age, FIGO stage, histological type, time of reconstruction, prior irradiation, and flap type. The

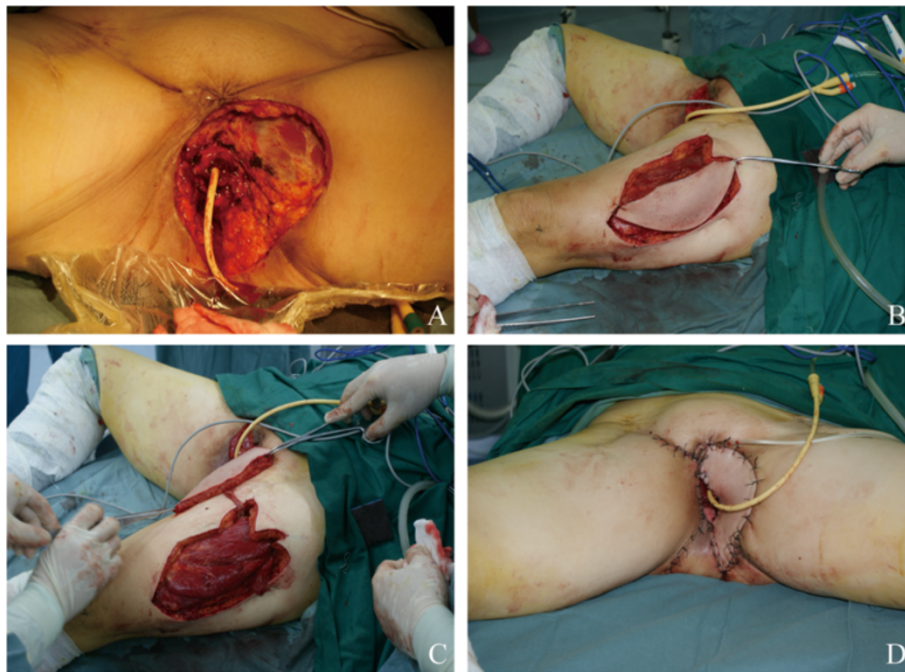
**Table 1** Basic demographic and clinical information of the 36 patients

Characteristics	Number (%)
Mean age(year)	49.7 ± 13 (23–74)
Mean BMI	24.17 ± 4.64 (18.66–36.13)
FIGO stage	
I	7 (19.44 %)
II	5 (13.89 %)
III	12 (33.33 %)
IV	2 (5.56 %)
Unstaged	10 (27.78 %)
Histology	
Squamous cell carcinoma	26 (72.22 %)
Melanoma	3 (8.33 %)
Bartholin gland carcinoma	2 (5.56 %)
Sarcoma	2 (5.56 %)
Others	3 (8.33 %)
Time of reconstruction	
Primary treatment	7 (19.44 %)
After recurrence	29 (80.56 %)
Previous radiation	
Yes	20 (55.56 %)
No	16 (44.44 %)
Types of skin flap	
Anterolateral thigh flap(ALT)	21 (58.33 %)
Pudendal thigh flap(PTF)	6 (16.67 %) <sup>a</sup>
Deep omferior epigastric perforator (DIEP)	4 (11.11 %)
Gracilis myocutaneous flap	1 (2.78 %)
Two types of skin flaps	4 (11.11 %)
Characteristics of defects	
Unilateral	6
Bilateral	30
Composite defects	
Involving the vaginal canal	7
Involving the urethral canal	4

<sup>a</sup>SCC squamous cell carcinoma, PENT primitive neuroectodermal tumor, MEHE malignant epithelioid hemangioendotheliom

mean age of the patients was 49 years. The main histological tumor type was squamous cell carcinoma (72.22 %). Seven patients underwent vulvar reconstruction at the time of primary treatment for advanced vulvar malignancies. Twenty-nine patients underwent vulvar reconstruction after surgery for tumor recurrence (Fig. 1). Twenty of the 36 patients (55.56 %) received chemotherapy or radiation before vulvar reconstruction.

Thirty-two patients had only one skin flap type and four patients had two different types. Among patients with a single skin flap type, the ALT flap was the most commonly



**Fig. 1** The patient underwent vulvar reconstruction for recurrent squamous cell carcinoma (SCC) after tumor resection. **a** Flap design, **b** Perforator dissection **(c)** Detection of the perforators and flap design **(D)** Appearance of the vulvae after reconstruction

used flap (21/36 cases, 58.33 %). Four patients had two flap types: an ALT flap combined with a DIEP flap, TRAM flap or gracilis myocutaneous flap; and one had a DIEP flap combined with a PTF.

The mean operation time among all 36 patients was 338 min (range, 120–660 min) with a mean estimated blood loss of 342 ml (range, 50–2000 ml). The flap size, operation time and blood loss associated with each different flap are shown in Table 2. The median length of hospitalization was 31 days (range, 13–145 days).

#### Improvement in QoL and post-operative complications

All 36 patients had one or more symptoms that significantly influenced their QoL before reconstruction, including 23 (63.90 %) with pain, 3 (8.00 %) with pruritus, 18 (50.00 %) with ulceration, 6 (16.67 %) with edema, and 6 (16.67 %) with vulvar hemorrhage. Five patients (13.89 %) could not sit, sleep or walk without analgesics, and one patient was unable to get out of bed. The

tumor-related symptoms in the other 30 patients (83.33 %) were completely removed. After surgery, no patient felt pruritus, ulceration, edema or hemorrhage. For 23 patients suffered pain before surgery, 17 patients were completely relieved and 6 patients (16.67 %) still felt slight pain. The mean VRS-4 score among all 36 patients was 1.44 before reconstruction and decreased to 0.17 after surgery ( $P < 0.0001$ ). The mean performance status was 1.67 before surgery and improved to 0.31 after surgery ( $P < 0.0001$ ) (Table 3).

None of the patients experienced complete flap loss. Eleven patients (30.56 %) developed complications, including 5 patients (13.89 %) with major complication and 6 patients (16.67 %) with minor complication. All patients who developed partial necrosis (13.89 %) underwent reoperation. More specifically, 5 patients (13.89 %) suffered partial necrosis, 5 (13.89 %) with minimal wound dehiscence and 1 (2.78 %) with flap cellulitis. All patients who developed partial necrosis (13.89 %) underwent reoperation. The most

**Table 2** Comparison of different flap parameters

Flap parameters	ALT	DIEP	PTF	Gracilis Flap	
Flap size (cm <sup>2</sup> )	179.21 ± 108.73	151 ± 67.12	70 ± 24.72	84	
Operation time (min)	371.25 ± 38.72	300 ± 129.6	280.2 ± 140.4	240	
Blood loss (ml)	278.13 ± 317.79		575 ± 403.1	175 ± 781.9	100

ALT anterolateral thigh, PTF pudendal thigh flap, DIEP deep inferior epigastric perforator

**Table 3** Mean VRS-4 and mean performance status before and after surgery

	Before surgery	After surgery	P value
Mean VRS-4	1.44 ± 0.88	0.17 ± 0.34	P < 0.0001
Mean Performance status	1.67 ± 0.89	0.31 ± 0.89	P < 0.0001

VRS-4 four-category verbal rating scale

common symptoms of partial necrosis were a pale flap color and low flap temperature of flap followed by cyanosis, blisters, or swelling. Most cases of minimal dehiscence were found after removing the sutures. Among the patients with major complications, four had an ALT flap and one had a PTF flap. Among the patients with minor complications, three had an ALT flap and one each had a TRAM flap, DIEP flap and PTF. All patients who developed partial necrosis underwent reoperation, and five patients with minimal wound dehiscence were treated with dressing changes. The case of cellulitis resolved after debridement and dressing changes. All wounds healed favorably after appropriate treatment. Twenty-one patients received adjuvant therapies, such as chemotherapy and radiotherapy. Among patients who received chemotherapy, the mean time interval between surgery and adjuvant therapy was 16 days. Among patients who received radiotherapy, the mean interval was 29 days. The reconstructed vulvae were plump and elastic. The donor sites healed without functional impairment, and no donor site morbidity was reported. No late complications were recorded.

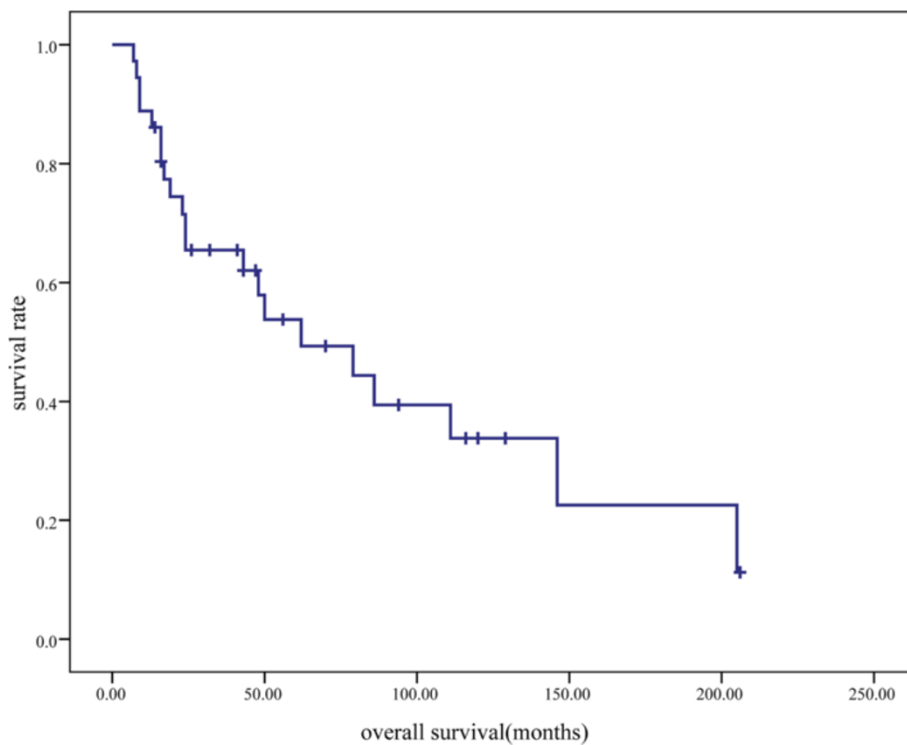
One patient with a PTF reported perineal strain upon sitting.

**Follow-up results**

The median follow-up duration was 9 months (range, 1–75 months) after vulvar reconstruction. Twenty-one patients (58.33 %) were confirmed to have relapsed after vulvar reconstruction. Sixteen patients had local recurrence, five developed distant metastasis to the bilateral lungs or liver. The other 15 patients were living and disease-free at a median follow-up of 14 months (range, 1–60 months). Of all 36 patients, 21 patients (58.33 %) had died at the last time of contact; 20 of them died of recurrence and 1 died of myocardial infarction. The median overall follow-up time was 43 months (range, 7–206 months). The median progression-free survival (PFS) was 5 months, and the median overall survival was 62 months. The 5-year survival rate of the 36 patients was 53.8 % (Fig. 2).

**Discussion**

Commonly used reconstructive options include skin grafts, local skin flaps and myocutaneous flaps [16]. Each of these has advantages and limitations in different reconstruction situations. For example, skin grafts are most useful for superficial defects, but their use is limited in patients with major resections. Additionally, local



**Fig. 2** Kaplan-Meier survival curve showing the survival of the 36 patients

flaps and regional flaps have been described in many vulvar reconstructions, including V-Y flaps [6], inferior gluteal flaps [17], and lotus petal flap [18, 19]. Application of these flaps in vulvar reconstruction has produced good outcomes with short hospital stays and low complication rates. However, most such flaps are relatively small in size, and their use is influenced by the surgical history of the donor site, especially in irradiated tissue [20, 21]. Myocutaneous flaps include the TRAM flap and gracilis myocutaneous flap. The DIEP flap [22] and ALT flap are perforator skin flaps, while the PTF is a fasciocutaneous flap. However, prior irradiation, a history of surgery, and certain situations may also limit or preclude the use of these flaps. The ALT flap was first described by Song et al. [23] in 1984. It is a large skin flap based on the septocutaneous artery flap concept that can safely be harvested and provide sufficient tissue to fill large defects [4, 24, 25]. Because of its reliability and versatility, it has been successfully used in many soft tissue reconstructions, such as those in the head and neck region [26, 27]; however, there are relatively few descriptions of the use of ALT flaps for treatment of gynecologic malignancies.

For advanced and locally recurrent vulvar malignancies, surgical treatment, which provides acceptable survival results, is still the most common treatment [20–22]. Although radical surgery can completely remove the tumor, it is associated with complications such as wound infection, delayed wound healing, and an increased hospital stay. Successful wound healing is critical to minimizing patient morbidity and ensuring that adjuvant therapies can be performed without delay. Additionally, vulvar surgery often introduces problems with regard to QoL and body image.[23]. Therefore, oncological vulvar reconstruction is necessary to improve surgical outcomes and QoL.

Many studies have focused on different methods of vulvar reconstruction, such as those using skin grafts, local skin flaps or regional skin flaps [6, 24, 25]. The most commonly used flaps are V-Y flaps [6], lotus petal flaps [18] and PTF. The choice of surgical approach and flap type depend on many factors, such as the patients' prior treatment and surgery, which need to be carefully reviewed when formulating a reconstructive plan. Patients who have received radiotherapy often exhibit poor vascularization in the radiation field which limits the use of local and regional flaps.

In this study, we evaluated a consecutive series of 36 patients treated with 5 types of flaps for oncological vulvar reconstruction. The majority of patients had recurrence or a history of radiotherapy. Because of their treatment history and disease status, there was little use of local flaps; all patients underwent repair with regional skin flaps. Staiano et al. [25] published a series on vulvar

reconstruction; most of the patients in their study had received radiotherapy. There were minor complications in 40 % of patients, and a local flap was used in 10 patients [25]. By comparison, although most of the patients in our study received radiotherapy, there were minor complications in only 13.89 % of the patients. This may be because all of the patients had a regional flap that was less influenced by prior irradiation. Additionally, no functional impairment occurred in our study. Hence, for patients with a history of irradiation, flap reconstruction is a safer option, especially that using a distant pedicle flaps. This method may offer a better chance of healing.

Patients with vulvar cancer are often in pain, which influences the patients' QoL. In this study, all patients' VRS-4 score and performance status were evaluated before and after surgery. The mean VRS-4 score was 1.44 before reconstruction and 0.17 after surgery ( $P < 0.0001$ ). The performance status was 1.67 before surgery and improved to 0.31 after surgery ( $P < 0.0001$ ). Most of the tumor-related symptoms were gone after surgery. Our results demonstrate that vulvar reconstruction significantly improved the patients' QoL, which is very important for patients with advanced and recurrent diseases.

In previous studies, the survival rates of patients with vulvar carcinoma and positive inguinal lymph nodes ranged from 21 to 53 % [26–28]. Although most patients were in the late stage and had recurrent tumors, the 5-year survival rate of our 36 patients reached 53.8 %. This demonstrates that with good pre-operative evaluation and post-operative management, patients with advanced and local recurrence can benefit from radical excision and vulvar reconstruction.

Our experience with the present a series of cases allowed us to develop a reconstructive approach for different vulvar defects. The choice of surgical approach and flap type depends on many factors. A careful review of patients' conditions and prior histories is needed. In the present study, defects were defined as simple defect (localized soft-tissue deficiencies) and complicated defects (irradiated defects or extensive soft-tissue deficiencies). Simple defects can be reconstructed with local flaps or ALT flap. For bilateral vulvar defects, fenestrated or split ALT flaps also work well. For complicated defects, ALT flaps can be elevated with customized dimensions and components tailored to each defect [4]. For mons pubis defects, the DIEP flap and groin flap are better choices.

Our study has some limitations, such as the lack of information about sexual function because most patients are unwilling to share this information. Sexual function after vulvar reconstruction is a very important factor in assessing improvement in QoL and is worthy of further investigation.

## Conclusion

The use of myocutaneous/skin flap for vulvar reconstruction after removal of advanced or recurrent vulvar malignancies is associated with a low rate of postoperative complications decreased pain and an improved functional status. Although the recurrence rate in this patient population is high, a reasonable proportion of patients who undergo resection for advanced/recurrent vulvar cancer and reconstructive surgery appear to benefit.

## Abbreviations

ALT: Anterolateral thigh; DIEP: Deep inferior epigastric perforator; PTF: Pudendal thigh flap; TRAM: Transverse rectus abdominis musculocutaneous; VRS: Verbal rating scale; QoL: Quality of life; FIGO: International Federation of Gynecology and Obstetrics; PET-CT: Positron emission tomography-computed tomography; CT: Computed tomography; PFS: Progression-free survival; OS: Overall survival; SCC: Squamous cell carcinoma; PENT: Primitive neuroectodermal tumor; MEHE: Malignant epithelioid hemangioperithelioma.

## Competing interests

The authors declare that they have no competing interests.

## Authors' contributions

WZ, JY, DC, JL, and KS conceived of and designed the study. WZ, AZ, XW, YY, JC, DC, XH and KS performed the data acquisition. WZ, AZ, JC, and KS analyzed and interpreted the data. WZ, AZ, and KS drafted the article. WZ, AZ, YY, JY, JL, and KS critically revised the manuscript for important intellectual content. All authors approved the final version to be published. KS agrees to be accountable for all aspects of the work.

## Acknowledgments

This study was supported by the National High Technology Research Development Program of China (863 program, grant no. 2012AA02A507) and the National Natural Science Foundation of China (grant nos. 81172482 and 81372780).

## Author details

<sup>1</sup>Departments of Obstetrics and Gynecology, Peking Union Medical College (PUMC) Hospital, Chinese Academy of Medical Sciences & Peking Union Medical College, Shuaifuyuan No.1, Dongcheng District, Beijing 100730, China. <sup>2</sup>Departments of Plastic Surgery, Peking Union Medical College (PUMC) Hospital, Chinese Academy of Medical Sciences & Peking Union Medical College, Beijing, China. <sup>3</sup>Departments of General Surgery, Peking Union Medical College (PUMC) Hospital, Chinese Academy of Medical Sciences & Peking Union Medical College, Beijing, China. <sup>4</sup>Departments of Pathology, Peking Union Medical College (PUMC) Hospital, Chinese Academy of Medical Sciences & Peking Union Medical College, Beijing, China.

Received: 14 March 2015 Accepted: 15 October 2015

Published online: 05 November 2015

## References

- Philip J, DiSaia WTC. Clinical gynecologic oncology. 7th ed. 2007.
- Wilkinson EJ. Superficial invasive carcinoma of the vulva. Clin Obstet Gynecol. 1985;28(1):188–95.
- Gunther V, Malchow B, Schubert M, Andresen L, Jochens A, Jonat W, et al. Impact of radical operative treatment on the quality of life in women with vulvar cancer - A retrospective study. Eur J Surg Oncol. 2014;40(7):875–82.
- Zeng A, Qiao Q, Zhao R, Song K, Long X. Anterolateral thigh flap-based reconstruction for oncologic vulvar defects. Plast Reconstr Surg. 2011;127(5):1939–45.
- Filobos G, Chapman T, Khan U. Split anterolateral thigh (ALT) free flap for vulva reconstruction: a case report. J Plast Reconstr Aesthet Surg. 2012;65(4):525–6.
- Benedetti Panici P, Di Donato V, Bracchi C, Marchetti C, Tomao F, Palaia I, et al. Modified gluteal fold advancement V-Y flap for vulvar reconstruction after surgery for vulvar malignancies. Gynecol Oncol. 2014;132(1):125–9.
- Qiu SS, Jurado M, Hontanilla B. Comparison of TRAM versus DIEP flap in total vaginal reconstruction after pelvic exenteration. Plast Reconstr Surg. 2013;132(6):1020e–7e.
- Gleeson NC, Baile W, Roberts WS, Hoffman MS, Fiorica JV, Finan MA, et al. Pudendal thigh fasciocutaneous flaps for vaginal reconstruction in gynecologic oncology. Gynecol Oncol. 1994;54(3):269–74.
- Soper JT, Larson D, Hunter VJ, Berchuck A, Clarke-Pearson DL. Short gracilis myocutaneous flaps for vulvovaginal reconstruction after radical pelvic surgery. Obstet Gynecol. 1989;74(5):823–7.
- Crosbie EJ, Slade RJ, Ahmed AS. The management of vulval cancer. Cancer Treat Rev. 2009;35(7):533–9.
- Gadducci A, Cionini L, Romanini A, Fanucchi A, Genazzani AR. Old and new perspectives in the management of high-risk, locally advanced or recurrent, and metastatic vulvar cancer. Crit Rev Oncol Hematol. 2006;60(3):227–41.
- Hartrick CT. A four-category verbal rating scale (VRS-4), an 11-point numeric rating scale (NRS-11), and a 100-mm visual analog scale (VAS) were compared in the assessment of acute pain after oral surgery. Clin J Pain. 2001;17(1):104–5.
- Williamson A, Hoggart B. Pain: a review of three commonly used pain rating scales. J Clin Nurs. 2005;14(7):798–804.
- Clark TG, Stewart ME, Altman DG, Gabra H, Smyth JF. A prognostic model for ovarian cancer. Br J Cancer. 2001;85(7):944–52.
- di Summa PG, Tremp M, Meyer Zu Schwabedissen M, Schaefer DJ, Kalbermatten DF, Raffoul W. The combined pedicled anterolateral thigh and vastus lateralis flap as filler for complex perineal defects. Ann Plast Surg. 2014. doi:10.1097/SAP.0b013e3182a884c8.
- Fowler JM. Incorporating pelvic/vaginal reconstruction into radical pelvic surgery. Gynecol Oncol. 2009;115(1):154–63.
- Loree TR, Hempling RE, Eltabakh GH, Recio FO, Piver MS. The inferior gluteal flap in the difficult vulvar and perineal reconstruction. Gynecol Oncol. 1997;66(3):429–34.
- Yii NW, Niranjana NS. Lotus petal flaps in vulvo-vaginal reconstruction. Br J Plast Surg. 1996;49(8):547–54.
- Argenta PA, Lindsay R, Aldridge RB, Siddiqui N, Burton K, Telfer JR. Vulvar reconstruction using the "lotus petal" fascio-cutaneous flap. Gynecol Oncol. 2013;131(3):726–9.
- Simonsen E. Treatment of recurrent squamous cell carcinoma of the vulva. Acta Radiol Oncol. 1984;23(5):345–8.
- Shimm DS, Fuller AF, Orlov EL, Dosoretz DE, Aristizabal SA. Prognostic variables in the treatment of squamous cell carcinoma of the vulva. Gynecol Oncol. 1986;24(3):343–58.
- Piura B, Masotina A, Murdoch J, Lopes A, Morgan P, Monaghan J. Recurrent squamous cell carcinoma of the vulva: a study of 73 cases. Gynecol Oncol. 1993;48(2):189–95.
- Hawthornst-Knapstein S, Schonefuss G, Hoffmann SO, Knapstein PG. Pelvic exenteration: effects of surgery on quality of life and body image—a prospective longitudinal study. Gynecol Oncol. 1997;66(3):495–500.
- Weikel W, Schmidt M, Steiner E, Knapstein PG, Koelbl H. Reconstructive plastic surgery in the treatment of vulvar carcinomas. Eur J Obstet Gynecol Reprod Biol. 2008;136(1):102–9.
- Staiano JJ, Wong L, Butler J, Searle AE, Barton DP, Harris PA. Flap reconstruction following gynaecological tumour resection for advanced and recurrent disease—a 12 year experience. J Plast Reconstr Aesthet Surg. 2009;62(3):346–51.
- Collins CG, Collins JH, Barclay DL, Nelson EWCANCERINVOLVINGTHEVULVA. A report on 109 consecutive cases. Am J Obstet Gynecol. 1963;87:762–72.
- Benedet JL, Turko M, Fairey RN, Boyes DA. Squamous carcinoma of the vulva: results of treatment, 1938 to 1976. Am J Obstet Gynecol. 1979;134(2):201–7.
- Creasman WT, Phillips JL, Menck HR. The national cancer data base report on early stage invasive vulvar carcinoma. The american college of surgeons commission on cancer and the american cancer society. Cancer. 1997;80(3):505–13.