

Clozapine and all-cause mortality in treatment-resistant schizophrenia: a historical cohort study

Cho J, Hayes RD, Jewell A, Kadra G, Shetty H, MacCabe JH, Downs J. Clozapine and all-cause mortality in treatment-resistant schizophrenia: a historical cohort study.

Objective: Large-scale epidemiological studies have demonstrated a protective effect of clozapine on mortality in people with schizophrenia. Clozapine is reserved for use in patients with treatment-resistant schizophrenia (TRS), but evidence of clozapine's effect on mortality exclusively within TRS samples is inconclusive. Hence, we aimed to investigate the effect of clozapine use on all-cause mortality in TRS patients.

Methods: A historical patient cohort sample of 2837 patients, who met criteria for TRS between 1 Jan 2008 and 1 Jan 2016, were selected from the South London and Maudsley NHS Foundation Trust (SLAM) electronic health records (EHR). The national Zaponex Treatment Access System (ZTAS) mandatory monitoring system linked to the SLAM EHR was used to distinguish which patients were initiated on clozapine ($n = 1025$). Cox proportional hazard models were used, adjusting for sociodemographics, clinical monitoring, mental and physical illness severity and functional status.

Results: After controlling for potential confounders, the protective effect of clozapine on all-cause mortality was significant (adjusted hazard ratio 0.61; 95% confidence interval 0.38–0.97; $P = 0.04$).

Conclusions: Clozapine reduces the risk of mortality in patients who meet criteria for TRS. We provide further evidence that improving access to clozapine in TRS is likely to reduce the mortality gap in schizophrenia.

J. Cho¹, R. D. Hayes^{1,2},
A. Jewell³, G. Kadra¹,
H. Shetty^{1,2,3}, J. H.
MacCabe^{1,2,3}, J. Downs^{1,2,3}

¹Institute of Psychiatry Psychology and Neuroscience, King's College London, ²NIHR Maudsley Biomedical Research Centre, and ³South London and Maudsley NHS Foundation Trust, London, UK

This is an open access article under the terms of the Creative Commons Attribution License, which permits use, distribution and reproduction in any medium, provided the original work is properly cited.

Key words: clozapine; mortality; treatment-resistant; schizophrenia

Johnny Downs, Department of Child and Adolescent Psychiatry, Institute of Psychiatry Psychology and Neuroscience, King's College London, PO Box 84, De Crespigny Park, SE5 8AF London, UK.
E-mail: johnny.downs@kcl.ac.uk

Accepted for publication November 22, 2018

Significant outcomes

- Among patients with treatment-resistant schizophrenia (TRS), clozapine users had a reduced mortality risk compared to patients who have not used clozapine, after taking account for differential baseline risks including psychopathology and functional status, and addressing potential impact of survival biases.

Limitations

- An automated approach was used to identify patients who meet TRS criteria and who have not been previously trialled on clozapine. This might lead to misclassification, possibly including non-TRS patients in the analysis. This misclassification is more likely to be non-differential.
- There is potential residual confounding by unmeasured confounders such as comorbid cardiovascular disease and smoking.

Introduction

Patients with schizophrenia and other psychoses have approximately three times higher rates of all-cause mortality and over ten times higher rates of suicide compared to general population (1).

A number of epidemiological studies have recently examined how pharmacological treatments may be associated with differences in survival in populations with psychoses. The effects of clozapine, an atypical antipsychotic, on mortality in patients with psychoses has received particular attention (2–9). Despite the varied comparators and study populations, several large-scale studies with long-term follow-up have reported consistently a protective effect of clozapine use on mortality (9). However, clozapine use is restricted as a third-line treatment option in most countries, and only licensed for patients with treatment-resistant schizophrenia (TRS), where first- and second-line antipsychotic treatment trials have failed. Ahead of using clozapine, patients undergo clinical examinations including routine haematological screening to reduce the risk of the rare but severe side-effect of agranulocytosis (10). In most developed countries including the United Kingdom, clozapine therapy can only be initiated when minimum absolute neutrophil counts are achieved, followed by weekly to monthly blood profile monitoring (11). Consequently, clozapine users are likely to clinically differ from non-clozapine users. Moreover, patients who meet the definition of treatment resistance may be biologically distinct from those with treatment-responsive schizophrenia (12–14). In line with this, two recent studies have investigated the effect of clozapine use on mortality in TRS (8, 15). The study using United States Medicaid data reported no significant mortality difference between those patients treated with clozapine and those without (15), whereas the Danish national registry study found an approximately twofold higher mortality in non-clozapine users (8). Without further study, these contrasting findings from two different healthcare systems make it difficult to determine whether clozapine does or does not reduce the risk of death in patients with treatment-resistant schizophrenia.

Many patients who meet criteria for treatment resistance either never receive clozapine treatment or at least experience considerable delay in receiving it (16, 17). These studies imply a hesitation on the part of clinicians and/or patients. Their findings suggest barriers to earlier adoption of clozapine might be due to concerns over severe side-effects, and difficulties with adhering to strict

initiation guidelines and schedule of intensive clinical monitoring. Patients with TRS, prior to clozapine initiation, generally have complex treatment regimes. In an earlier study, we found 14% of patients with TRS on antipsychotic polypharmacy and 33% receiving adjuvant psychotropic drugs such as antidepressants and benzodiazepines (18). These more complex treatment patterns are associated with greater harm than monotherapy regimes. Antipsychotic polypharmacy has been associated with increased risks of readmission (19), adverse events such as extrapyramidal side-effects (20), metabolic syndrome (21) and mortality (22, 23). In terms of preventing potentially avoidable deaths, it is important to discern whether clozapine is superior to other TRS regimens in reducing mortality. If this effect is confirmed, there is a greater argument for helping patients with TRS start and sustain clozapine treatment.

Aims of the study

The present historical cohort study investigates the effect of clozapine use on all-cause mortality in treatment-resistant schizophrenia patients in the United Kingdom. Using electronic mental health records from community and in-patient care settings linked to clozapine national registry data, we aimed to address several of the methodological weaknesses identified by a recent systematic review of prior work examining clozapine use and mortality in schizophrenia (9). These include issues of residual bias through selecting non-treatment-resistant schizophrenia controls (24), performance bias through better access to care, survival bias (2) and measurement bias through exclusion of hospital-based prescribing (25).

Material and methods

Data sources

Clinical record interactive search. The Clinical Record Interactive Search (CRIS) has provided an anonymized search system for the electronic health records (EHR) of the South London and Maudsley NHS Foundation Trust (SLAM) from 2007 onwards (25–27). SLAM provides mental health specialist services in four London boroughs (Lambeth, Southwark, Lewisham and Croydon), covering roughly 1.36 million of population. Using the CRIS system, researchers can query structured and free-text data of over 300 000 patients. These patient records are updated by contemporaneous national mortality information

(irrespective of current treatment status in SLAM), and enhanced by linkages to external clinical database such as the national Zaponex Treatment Access System (ZTAS) clozapine register.

ZTAS register. To prevent clozapine users from agranulocytosis-related deaths, several countries including the United Kingdom, the United States, Australia and Canada operate a national registry and monitoring system for clozapine users with blood test results. Clozapine patients treated within SLAM are enrolled on ZTAS (<http://www.ztas.co.uk>), which is one of the UK mandatory monitoring systems. In order for clinicians to prescribe clozapine, they must register clozapine users on the ZTAS system, with patients' pre-treatment blood test results (white blood cell, neutrophil, eosinophil and platelet counts). The reference blood test results are categorized as green (white blood cell, $3.5 \times 10^9/L$; neutrophil $2.0 \times 10^9/L$), amber (3.0–3.5; 1.5–1.9) and red (<3.0 ; <1.5). Patients with 'green' blood test results can be prescribed clozapine, within 10 days of this result. In this study, a linkage was performed with all patients whose last recorded pharmacy within the SLAM boroughs, and who had been registered on the ZTAS monitoring service between 1 Jan 2007 and 1 Jan 2016. These data were used to confirm the initiation date of clozapine users first identified from the CRIS database.

Ethical considerations

The use of anonymized data from the CRIS database for mental health research was approved by Oxfordshire Research Ethics Committee C (08/H0606/71+5), and governance is provided for all projects and dissemination through a patient-led oversight committee.

Study subjects

Please see Fig. 1 for a flow diagram describing the sample selection. We used a previously-established approach (2) to identify the initial cohort which included all patients who received treatment from SLAM services between 1 Jan 2007 and 1 Jan 2016, who were aged 15 years and older, and had at least one recorded International Classification of Diseases version 10 (ICD-10) diagnoses of schizophrenia (F20), schizoaffective disorder (F25) or bipolar disorder (F31) recorded during the observation period. From this cohort, we identified the six most commonly used oral antipsychotic medications: amisulpride,

aripiprazole, haloperidol, olanzapine, risperidone, quetiapine and any British National Formulary listed long-acting injectable or depot (11). We then identified those patients who had been prescribed any of these antipsychotics and/or clozapine. This yielded 14 972 subjects. Study subjects were identified using both structured and free-text fields in the CRIS system. For the free-text data, subjects' information was extracted using a natural language processing (NLP) application which was developed using Generalized Architecture for Text Engineering (GATE). GATE enables researchers to extract data from clinical documents while considering the linguistic context. The performance of this NLP application for extracting medication prescribing has been previously validated and found to have good accuracy, for example identifying recorded clozapine use at a patient level with the precision and recall performance of 96% and 92% respectively (2).

Identifying treatment resistance and clozapine exposure

Treatment-resistant psychosis patients were defined as those who had ever been selected for clozapine treatment or those who had received a trial of at least three different antipsychotics, where the third novel antipsychotic was initiated during hospitalization between 1 Jan 2008 and 1 Jan 2016, according to SLAM EHR and ZTAS records. Among the initial cohort, 1042 subjects (the clozapine exposed group) had greater than one 'green' blood profiles on the ZTAS records. The earliest date was used as an indicative date for clozapine initiation. For the non-clozapine group, 2089 patients met the definition of treatment resistance, with no evidence of clozapine use. After excluding 2 subjects with invalid dates, 2087 treatment-resistant patients with non-clozapine antipsychotic use were identified. Among the identified clozapine and non-clozapine groups, we then restricted the sample to include only those who had received at least one ICD-10 schizophrenia (F20) diagnoses (Fig. 1).

Main outcome measure

All-cause mortality during the observation period from 1 Jan 2008 to 31 Dec 2016 was determined through routine nationwide mortality tracing linked to the electronic health record. As previously described all previous and current SLAM contacts are checked monthly against the national mortality database and date of death is electronically flagged (2, 26).

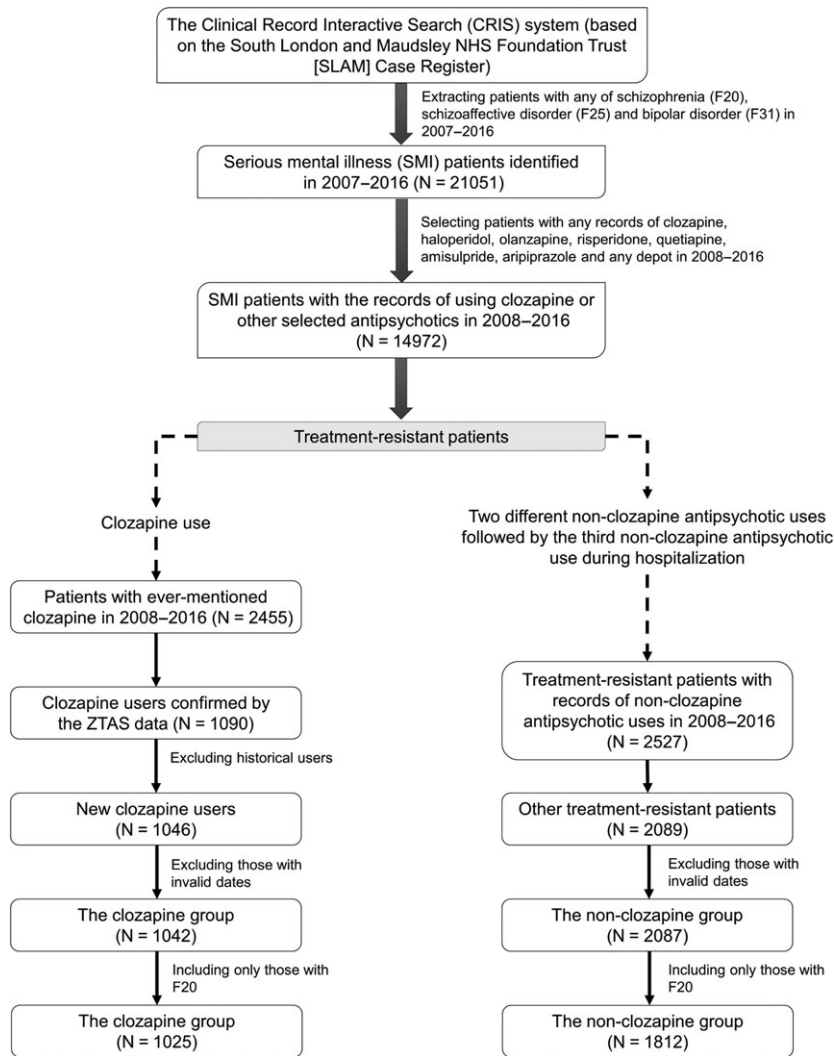


Fig. 1. Selection of study subjects.

Follow-up

For the clozapine group, the ZTAS ‘green’ blood result date was used as a proxy of the drug initiation. To be recognized as valid, clozapine has to be prescribed within 10 days of an initial green result being registered on the ZTAS. This provided the best marker for the date of clozapine initiation in the ZTAS database. For the non-clozapine group, the drug initiation date was defined as the start date of the third antipsychotic use on hospitalization. For each patient, the follow-up time ended at the end of the observation window (31 Dec 2016) or with the patient’s death, whichever occurred first. The follow-up period was restricted to maximum five years (1826.25 days).

Other exposure variables

Age calculation was based on age at initiation of clozapine or the third novel antipsychotic.

Multiple deprivation index was used as a proxy of socioeconomic status (27). This index was based on a subject’s address group (area unit). Each area unit has its population of 1500 residents on average, with various unit-level characteristics (employment, income, education, health, barriers to housing and services, crime, living environment) weighted according to the importance. In the present study, the level of multiple deprivation was divided into quartiles, and homeless and unknown were given a category separately.

As a measure of clinical monitoring, clinical contact days were calculated by summation of all in-patient and out-patient visits during the follow-up, in which one in-patient visit was counted as one contact day regardless of the duration of admission (2). Considering the varied follow-up period in each subject, face-to-face clinical contact days were divided by individual follow-up days, and then the percentage was categorized into quartiles.

The clozapine and non-clozapine groups were meant to be clinically equivalent, but there is still a possibility of selection bias because overall health status can affect clozapine prescription. To address this issue, the present study used the Health of the Nation Outcome Scale (HoNOS) tool (28, 29), an instrument used by clinicians to monitor the health and wellbeing of psychiatric patients in the United Kingdom. The HoNOS data were extracted based on the date closest to the clozapine or 3rd antipsychotic drug initiation date. HoNOS variables used in this study were divided into three categories: mental health symptom severity (overactive, aggressive, disruptive or agitated behaviour, hallucination and delusions and depressed mood), additional mental and physical health problems (non-accidental self-injury, problems of drinking or drug taking and physical illness or disability problems) and functional status (activities of daily living, standard of living conditions, occupational and recreational activities and social relationships). Every variable was categorized as no, minor, mild, moderate and severe problem. In addition, any ICD-10 diagnoses F11 opiate and F10 alcohol use related disorders, recorded before or during the observation period, were also extracted from structured fields and free-text records.

Statistical analysis

All analyses were conducted using STATA version 12 (30). Chi-squared tests were used to make comparisons between the clozapine and non-clozapine groups. To estimate the risk of mortality due to clozapine use, Cox proportional hazard models were used, in which the clozapine group was coded as 1 and the non-clozapine group as 0. Our initial multivariable model added sociodemographic variables as co-variables (age, gender, ethnicity, marital status and deprivation level). We then added, cumulatively, a number of co-variate sets as potential confounders. The sequence of adding these co-variate sets followed the order used in a prior study examining clozapine exposure and mortality (2). These sets included a history of substance use disorders (alcohol and opioid), clinical monitoring (face-to-face contact days), mental health symptom severity (agitated behaviour, hallucination and delusions and depressed mood), additional mental and physical health problems (non-accidental self-injury, problems of drinking or drug taking and physical illness or disability problems) and functional status (Activities of daily living [ADLs] standard of living conditions, occupational and recreational activities and social relationships). Age was included in the Cox regression models as

a continuous variable, and the remaining variables were treated as categorical variables. Hazard ratios (HRs) and 95% confidence intervals (95% CIs) were presented. Cox proportional hazard assumptions were checked via likelihood ratio tests to examine whether there was interaction with time. These tests were used to ensure that the relationship between clozapine and mortality did not change over time.

Results

The mean [standard deviation (SD)] follow-up time was 1413.8 (559.2) days. A total of 2837 TRS patients consisted of $n = 1025$ clozapine group and $n = 1812$ non-clozapine group (Table 1). The mean age was 38.7 years (SD, 11.4) and men accounted for 62.5%. Characterized by mental health symptom severity, 41.8% of subjects had moderate or severe problems in hallucinations and delusions, whereas 6.1% in depressed mood. The proportion of deaths in subjects with moderate problem of physical illness was higher (13.2%) than those of other categories.

When comparing non-clozapine treatment-resistant group with the clozapine group (Table 2), the clozapine group had more frequent face-to-face clinical contact ($P < 0.001$), but less severe baseline psychopathology profiles ($P < 0.001$) than the non-clozapine group. The clozapine group had lower rates of substance use disorders, less severe symptoms of agitation, drinking and drug problems, better indices of living conditions and social relationships. The same tendency was observed when we restricted the analysis to the subset of participants with a HoNOS completed prior to clozapine initiation date (Table S1).

Likelihood-ratio tests showed the proportional hazards assumptions held ($P = 0.39$). The protective effect of clozapine use on 5-year mortality was not significant in the crude Cox regression model (HR, 0.73; 95% CI: 0.49–1.08; $P = 0.12$) (Table 3). Adjustment for sociodemographic variables (HR, 0.60; 95% CI: 0.40–0.92; $P = 0.02$) showed clozapine was significantly associated with a reduced mortality. Further adjustment for history of substance use disorders, clinical monitoring frequency, mental health symptom severity and additional mental and physical health problems (HR, 0.66; 95% CI: 0.42–1.03; $P = 0.07$) demonstrated a similar, but non-significant effect – broadening confidence intervals suggest reduced power due to missing values reducing the available sample, rather than significant attenuation of effect. The final multivariable model, including all measured covariates, showed a statistically significant

Table 1. Characteristics of study subjects (N = 2837)

| | Total no. (% of total sample) | No. of deaths (% per characteristic) |
|---|----------------------------------|---|
| Antipsychotic use | | |
| Clozapine | 1025 (36.1) | 35 (3.4) |
| Other antipsychotics | 1812 (63.9) | 75 (4.1) |
| Sociodemographic variables | | |
| Age (mean 38.7, standard deviation 11.4, range 17–71 years) | | |
| <35 years | 1176 (41.5) | 28 (2.4) |
| 35–<55 years | 1406 (49.6) | 55 (3.9) |
| 55 years or older | 255 (9.0) | 27 (10.6) |
| Gender | | |
| Women | 1063 (37.5) | 66 (3.7) |
| Men | 1774 (62.5) | 44 (4.1) |
| Ethnicity | | |
| White | 1003 (35.4) | 52 (5.2) |
| Black | 1434 (50.6) | 44 (3.1) |
| Asian | 158 (5.6) | 8 (5.1) |
| Mixed | 237 (8.4) | 6 (2.5) |
| Other or not stated | 5 (0.2) | 0 (0.0) |
| Marital status | | |
| Single | 2327 (82.0) | 93 (4.0) |
| Married or cohabiting | 239 (8.4) | 5 (2.1) |
| Divorced or separated | 254 (9.0) | 10 (3.9) |
| Not known or not disclosed | 17 (0.6) | 2 (11.8) |
| Deprivation level in area of residence | | |
| Quartile 1 (the highest) | 590 (20.8) | 23 (3.9) |
| Quartile 2 | 592 (20.9) | 23 (3.9) |
| Quartile 3 | 588 (20.7) | 18 (3.1) |
| Quartile 4 | 601 (21.2) | 25 (4.2) |
| Homeless | 101 (3.6) | 1 (1.0) |
| Unknown | 365 (12.9) | 20 (5.5) |
| Substance use disorders | | |
| History of alcohol-related disorders | | |
| No | 2679 (94.4) | 99 (3.7) |
| Yes | 158 (5.6) | 11 (7.0) |
| History of opioid-related disorders | | |
| No | 2778 (97.9) | 108 (3.9) |
| Yes | 59 (2.1) | 2 (3.4) |
| Clinical monitoring | | |
| Face-to-face contact days (% of follow-up time) | | |
| Quartile 1 | 709 (25.0) | 40 (5.6) |
| Quartile 2 | 711 (25.1) | 23 (3.2) |
| Quartile 3 | 708 (25.0) | 23 (3.2) |
| Quartile 4 (the highest) | 709 (25.0) | 24 (3.4) |
| Mental health symptom severity | | |
| Agitated behaviour | | |
| No problem | 1138 (40.1) | 41 (3.6) |
| Minor problem | 646 (22.8) | 22 (3.4) |
| Mild problem | 508 (17.9) | 18 (3.5) |
| Moderate problem | 312 (11.0) | 23 (7.4) |
| Severe problem | 188 (6.6) | 4 (2.1) |
| Missing | 45 (1.6) | 2 (4.4) |
| Hallucinations and delusions | | |
| No problem | 511 (18.0) | 15 (2.9) |
| Minor problem | 378 (13.3) | 12 (3.2) |
| Mild problem | 718 (25.3) | 30 (4.2) |
| Moderate problem | 776 (27.4) | 29 (3.7) |
| Severe problem | 407 (14.4) | 22 (5.4) |
| Missing | 47 (1.7) | 2 (4.3) |
| Depressed mood | | |
| No problem | 1330 (46.9) | 42 (3.2) |
| Minor problem | 822 (29.0) | 33 (4.0) |
| Mild problem | 466 (16.4) | 24 (5.2) |
| Moderate problem | 139 (4.9) | 8 (5.8) |
| Severe problem | 35 (1.2) | 1 (2.9) |
| Missing | 45 (1.6) | 2 (4.4) |

Table 1. (Continued)

| | Total no. (% of total sample) | No. of deaths (% per characteristic) |
|---|----------------------------------|---|
| Additional mental and physical health problems | | |
| Non-accidental self-injury | | |
| No problem | 2450 (86.4) | 97 (4.0) |
| Minor problem | 164 (5.8) | 6 (3.7) |
| Mild problem | 94 (3.3) | 3 (3.2) |
| Moderate problem | 54 (1.9) | 2 (3.7) |
| Severe problem | 29 (1.0) | 0 (0.0) |
| Missing | 46 (1.6) | 2 (4.3) |
| Problem-drinking or drug taking | | |
| No problem | 1930 (68.0) | 78 (4.0) |
| Minor problem | 286 (10.1) | 12 (4.2) |
| Mild problem | 285 (10.1) | 10 (3.5) |
| Moderate problem | 216 (7.6) | 6 (2.8) |
| Severe problem | 69 (2.4) | 2 (2.9) |
| Missing | 51 (1.8) | 2 (3.9) |
| Physical illness or disability problems | | |
| No problem | 1824 (64.3) | 53 (2.9) |
| Minor problem | 459 (16.2) | 14 (3.1) |
| Mild problem | 341 (12.0) | 21 (6.2) |
| Moderate problem | 129 (4.6) | 17 (13.2) |
| Severe problem | 40 (1.4) | 3 (7.5) |
| Missing | 44 (1.6) | 2 (4.5) |
| Functional status | | |
| Activities of daily living (ADLs) | | |
| No problem | 1111 (39.2) | 33 (3.0) |
| Minor problem | 714 (25.2) | 23 (3.2) |
| Mild problem | 600 (21.2) | 37 (6.2) |
| Moderate problem | 299 (10.5) | 13 (4.3) |
| Severe problem | 66 (2.3) | 2 (3.0) |
| Missing | 47 (1.7) | 2 (4.3) |
| Standard of living conditions | | |
| No problem | 1512 (53.3) | 50 (3.3) |
| Minor problem | 528 (18.6) | 27 (5.1) |
| Mild problem | 351 (12.4) | 15 (4.3) |
| Moderate problem | 181 (6.4) | 7 (3.9) |
| Severe problem | 175 (6.2) | 6 (3.4) |
| Missing | 90 (3.2) | 5 (5.6) |
| Occupational and recreational activities | | |
| No problem | 1060 (37.4) | 41 (3.9) |
| Minor problem | 691 (24.4) | 27 (3.9) |
| Mild problem | 660 (23.3) | 21 (3.2) |
| Moderate problem | 237 (8.4) | 14 (5.9) |
| Severe problem | 102 (3.6) | 3 (2.9) |
| Missing | 87 (3.1) | 4 (4.6) |
| Social relationships | | |
| No problem | 874 (30.8) | 31 (3.5) |
| Minor problem | 713 (25.1) | 22 (3.1) |
| Mild problem | 754 (26.6) | 31 (4.1) |
| Moderate problem | 331 (11.7) | 18 (5.4) |
| Severe problem | 117 (4.1) | 5 (4.3) |
| Missing | 48 (1.7) | 3 (6.3) |

protective effect of clozapine on all-cause mortality (HR, 0.61; 95% 0.38–0.97; $P = 0.04$). Fig. 2 provides the survival probability curves during follow-up for the clozapine and non-clozapine groups.

Discussion

We found a protective effect of clozapine use on all-cause mortality in TRS patients over a 5-year follow-up period. This is the first investigation to

Clozapine and all-cause mortality in TRS

Table 2. Characteristics of clozapine and other antipsychotic groups in patients with treatment-resistant schizophrenia

| | Clozapine (N = 1025) | Non-clozapine (N = 1812) | P† |
|--|-------------------------|-----------------------------|--------|
| Sociodemographic variables | | | |
| Age, mean (standard deviation) | 39.2 (10.7) | 38.4 (11.8) | |
| <35 years | 385 (37.6) | 791 (43.7) | <0.001 |
| 35 to <55 years | 561 (54.7) | 845 (46.6) | |
| 55 years or older | 79 (7.7) | 176 (9.7) | |
| Gender | | | 0.002 |
| Women | 679 (66.2) | 1095 (60.4) | |
| Men | 346 (33.8) | 717 (39.6) | |
| Ethnicity | | | <0.001 |
| White | 456 (44.5) | 547 (30.2) | |
| Black | 422 (41.2) | 1012 (55.8) | |
| Asian | 61 (6.0) | 97 (5.4) | |
| Mixed | 84 (8.2) | 153 (8.4) | |
| Other or not stated | 2 (0.2) | 3 (0.2) | |
| Marital status | | | 0.084 |
| Single | 863 (84.2) | 1464 (80.8) | |
| Married or cohabiting | 82 (8.0) | 157 (8.7) | |
| Divorced or separated | 74 (7.2) | 180 (9.9) | |
| Not known or not disclosed | 6 (0.6) | 11 (0.6) | |
| Deprivation level in area of residence | | | <0.001 |
| Quartile 1 (the highest) | 212 (20.7) | 378 (20.9) | |
| Quartile 2 | 213 (20.8) | 379 (20.9) | |
| Quartile 3 | 171 (16.7) | 417 (23.0) | |
| Quartile 4 | 199 (19.4) | 402 (22.2) | |
| Homeless | 22 (2.1) | 79 (4.4) | |
| Unknown | 208 (20.3) | 157 (8.7) | |
| Substance use disorders | | | |
| History of alcohol-related disorders | | | 0.059 |
| No | 979 (95.5) | 1700 (93.8) | |
| Yes | 46 (4.5) | 112 (6.2) | |
| History of opioid-related disorders | | | 0.005 |
| No | 1014 (98.9) | 1764 (97.4) | |
| Yes | 11 (1.1) | 48 (2.6) | |
| Clinical monitoring | | | |
| Face-to-face contact days (% of follow-up time) | | | <0.001 |
| Quartile 1 | 183 (17.9) | 526 (29.0) | |
| Quartile 2 | 183 (17.9) | 528 (29.1) | |
| Quartile 3 | 263 (25.7) | 445 (24.6) | |
| Quartile 4 (the highest) | 396 (38.6) | 313 (17.3) | |
| Mental health symptom severity | | | |
| Agitated behaviour | | | <0.001 |
| No problem | 567 (55.3) | 571 (31.5) | |
| Minor problem | 220 (21.5) | 426 (23.5) | |
| Mild problem | 126 (12.3) | 382 (21.1) | |
| Moderate problem | 56 (5.5) | 256 (14.1) | |
| Severe problem | 34 (3.3) | 154 (8.5) | |
| Missing | 22 (2.1) | 23 (1.3) | |
| Hallucinations and delusions | | | <0.001 |
| No problem | 218 (21.3) | 293 (16.2) | |
| Minor problem | 153 (14.9) | 225 (12.4) | |
| Mild problem | 291 (28.4) | 427 (23.6) | |
| Moderate problem | 227 (22.1) | 549 (30.3) | |
| Severe problem | 113 (11.0) | 294 (16.2) | |
| Missing | 23 (2.2) | 24 (1.3) | |
| Depressed mood | | | 0.002 |
| No problem | 495 (48.3) | 835 (46.1) | |
| Minor problem | 309 (30.1) | 513 (28.3) | |
| Mild problem | 159 (15.5) | 307 (16.9) | |
| Moderate problem | 31 (3.0) | 108 (6.0) | |
| Severe problem | 9 (0.9) | 26 (1.4) | |
| Missing | 22 (2.1) | 23 (1.3) | |

Table 2. (Continued)

| | Clozapine (N = 1025) | Non-clozapine (N = 1812) | P† |
|---|-------------------------|-----------------------------|--------|
| Additional mental and physical health problems | | | |
| Non-accidental self-injury | | | 0.096 |
| No problem | 901 (87.9) | 1549 (85.5) | |
| Minor problem | 52 (5.1) | 112 (6.2) | |
| Mild problem | 27 (2.6) | 67 (3.7) | |
| Moderate problem | 15 (1.5) | 39 (2.2) | |
| Severe problem | 8 (0.8) | 21 (1.2) | |
| Missing | 22 (2.1) | 24 (1.3) | |
| Problem-drinking or drug taking | | | <0.001 |
| No problem | 752 (73.4) | 1178 (65.0) | |
| Minor problem | 105 (10.2) | 181 (10.0) | |
| Mild problem | 80 (7.8) | 205 (11.3) | |
| Moderate problem | 57 (5.6) | 159 (8.8) | |
| Severe problem | 6 (0.6) | 63 (3.5) | |
| Missing | 25 (2.4) | 26 (1.4) | |
| Physical illness or disability problems | | | <0.001 |
| No problem | 596 (58.1) | 1228 (67.8) | |
| Minor problem | 196 (19.1) | 263 (14.5) | |
| Mild problem | 146 (14.2) | 195 (10.8) | |
| Moderate problem | 55 (5.4) | 74 (4.1) | |
| Severe problem | 10 (1.0) | 30 (1.7) | |
| Missing | 22 (2.1) | 22 (1.2) | |
| Functional status | | | |
| Activities of daily living (ADLs) | | | 0.219 |
| No problem | 402 (39.2) | 709 (39.1) | |
| Minor problem | 269 (26.2) | 445 (24.6) | |
| Mild problem | 210 (20.5) | 390 (21.5) | |
| Moderate problem | 103 (10.0) | 196 (10.8) | |
| Severe problem | 18 (1.8) | 48 (2.6) | |
| Missing | 23 (2.2) | 24 (1.3) | |
| Standard of living conditions | | | <0.001 |
| No problem | 637 (62.1) | 875 (48.3) | |
| Minor problem | 186 (18.1) | 342 (18.9) | |
| Mild problem | 88 (8.6) | 263 (14.5) | |
| Moderate problem | 48 (4.7) | 133 (7.3) | |
| Severe problem | 28 (2.7) | 147 (8.1) | |
| Missing | 38 (3.7) | 52 (2.9) | |
| Occupational and recreational activities | | | <0.001 |
| No problem | 433 (42.2) | 627 (34.6) | |
| Minor problem | 269 (26.2) | 422 (23.3) | |
| Mild problem | 195 (19.0) | 465 (25.7) | |
| Moderate problem | 68 (6.6) | 169 (9.3) | |
| Severe problem | 25 (2.4) | 77 (4.2) | |
| Missing | 35 (3.4) | 52 (2.9) | |
| Social relationships | | | <0.001 |
| No problem | 358 (34.9) | 516 (28.5) | |
| Minor problem | 282 (27.5) | 431 (23.8) | |
| Mild problem | 234 (22.8) | 520 (28.7) | |
| Moderate problem | 97 (9.5) | 234 (12.9) | |
| Severe problem | 32 (3.1) | 85 (4.7) | |
| Missing | 22 (2.1) | 26 (1.4) | |

† P-values represent the significance of difference between the clozapine and non-clozapine groups, as assessed by chi-squared tests for categorical variables and the student independent t test for continuous variables.

use electronic clinical notes (enhanced by linked data provided by a clozapine regulatory body) to describe the association of clozapine with all-cause mortality in TRS. These data from a comprehensive specialist mental health care service within a

Table 3. Hazard ratios of all-cause mortality related to clozapine use in patients with treatment-resistant schizophrenia

| | Deaths/total N | HRs (95% CIs) | P |
|--|----------------|------------------|------|
| Crude | 110/2837 | 0.73 (0.49–1.08) | 0.12 |
| Multivariate Cox proportional hazard models adjusted for | | | |
| Sociodemographic variables | 110/2837 | 0.60 (0.40–0.92) | 0.02 |
| Plus history of substance use disorders | 110/2837 | 0.61 (0.40–0.93) | 0.02 |
| Plus clinical monitoring | 110/2837 | 0.67 (0.43–1.03) | 0.07 |
| Plus mental health symptom severity | 108/2788 | 0.71 (0.46–1.11) | 0.14 |
| Plus additional mental and physical health problems | 108/2783 | 0.66 (0.42–1.03) | 0.07 |
| Plus functional status | 104/2720 | 0.61 (0.38–0.97) | 0.04 |

HR, hazard ratio; 95% CI, 95% confidence interval.

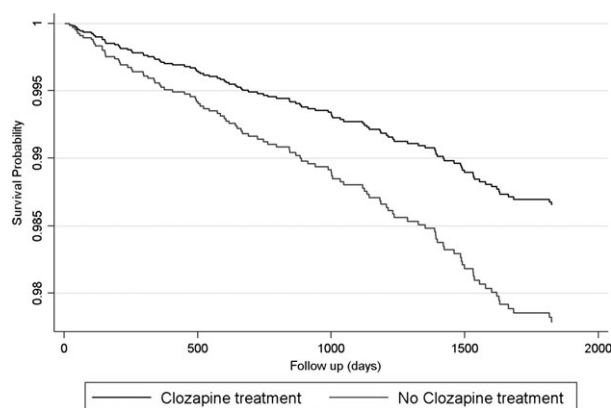


Fig. 2. Survival curves of all-cause mortality in patients with treatment-resistant schizophrenia, stratified by antipsychotic use.

geographic catchment, provided a greater depth of information to characterize patients with TRS than prior registry-based studies (8, 31). We overcame the limitations of previous work by: restricting our analyses to TRS samples to reduce selection bias; taking account of differential baseline risks including psychopathology (hallucinations, delusions, aggression, subclinical depression, addiction) and functional status (problems with ADL impairment, occupational and recreational activities, social relationships, living conditions); and addressing potential impact of survival biases.

The direction of effect we found was consistent with a recent meta-analysis, which reported significant pooled rate ratio of 0.34 in favour of patients using clozapine (95% CI = 0.19–0.62, $P \leq 0.001$) comparing clozapine users to non-users and/or other antipsychotic users (9). However, a previous study including 29 823 patients with schizophrenia in Sweden suggested that clozapine was not the most favourable antipsychotic in terms of reducing mortality, which may be attributable to more

restricted clozapine use in Sweden or methodological difficulties access hospital prescribing data (25). Focusing on TRS patients, Stroup et al. (31) reported null findings, but they only followed their study subjects ($n = 3123$) for one year (explaining the relatively lower mortality rates across the total sample) and used United States Medicaid data, which has restricted coverage related to patients' income and level of disability. Meanwhile, the Danish study ($n = 2370$) (8) used the national registry covering all individuals in Denmark. This study showed an adjusted HR of death related to non-clozapine use of 1.88 (95% CI: 1.16–3.05), which equates to reduced risk of mortality in the clozapine group of 0.53, similar to the effect found in the present study (HR = 0.61).

Clozapine is associated with improved treatment outcomes in TRS patients (32–34) but polypharmacy or high doses of non-clozapine antipsychotics predates clozapine treatment in around a third of treatment-refractory patients, leading to delayed clozapine initiation (17). In the present study, we found 42% of the clozapine group had a possible delay in clozapine initiation (i.e., clozapine use after three or more attempts of non-clozapine antipsychotics). Although beyond the scope of this study, future analyses should examine, within the clozapine subset, whether the delay between meeting TRS criteria and receiving clozapine is associated with greater mortality rates.

Prior naturalistic studies in treatment-resistant populations have demonstrated that those not receiving clozapine often show characteristic differences from those receiving clozapine (9, 31). In our study, we found the clozapine group had high but less severe baseline psychopathology profiles than the non-clozapine treatment-resistant group in a number of domains, including less severe symptoms of agitation, drinking and drug problems, adverse living conditions and poor social relationships. These factors are unlikely to distort the protective effect we found of clozapine on mortality as they were accounted for in the analyses. However, these differences reveal the potential selection effects for clozapine initiation, and suggest certain phenotypic and environmental differences which may be behind clozapine treatment delay. It is possible that these selection effects are due to patient preference, but they also may be driven by health service rationing. Potentially, clinicians are being pragmatic and not attempting to trial certain groups of highly morbid patients for clozapine initiation.

Strengths of this study include restriction of the study population to patients with psychiatric treatment consistent with treatment resistance,

adjustment for an array of potential demographic and clinical confounders, and the use of a comparison group receiving active treatment. Furthermore, the present study used data covering all mental health contacts in the catchment areas (community and hospital care), with timely linkage to accurate mortality data based on national registers. Specific to this study, the SLAM EHR including mortality data was linked to national ZTAS clozapine registry, which enabled us to improve identification of patients with clozapine initiation.

This study had a number of methodological limitations. Cause of death data was not available for analysis within our existing governance arrangements. Registrar reports on death dates are received by NHS organizations routinely from local registrars; however, cause of data death is administered separately by the Office National Statistics, and is only available through specific permissions, which has not been provided for this linked data study. We used an automated approach, similar to the previous study by Wimberley et al. (8), to identify those highly likely to meet TRS criteria and who have not been previously trialled on clozapine. This might lead to misclassification, possibly including non-TRS patients in the analysis. However, misclassification is more likely to be non-differential because the assignment of exposure status (prescribing clozapine) and recording of outcome status (mortality tracing) were independent of each other. There is still potential residual confounding by unmeasured confounders such as comorbid cardiovascular disease and smoking. Some previous studies found the protective effect of clozapine on all-cause mortality after adjustment of baseline history of cardiovascular disease including ischaemic heart disease (4, 6). However, after clozapine initiation, the likelihood of having cardiometabolic illnesses such as hypertension, diabetes mellitus and hyperlipidaemia may increase (15, 35, 36). Because of the cardiovascular adverse effects of the drug, it is possible that clinicians may more strongly advise smoking cessation to clozapine users, with this leading to reduced smoking behaviour (37). That said an increased risk of cardiometabolic illnesses does not necessarily lead to death, and a previous study showed that smoking was not associated with the risk of cardiovascular deaths in 10-year follow-up of clozapine users (36). To obtain a valid estimation for the pure effect of clozapine on mortality, it would be useful to include healthy behaviours as time-dependent variables in analyses. Dose information was not available in the current dataset, as suggested by Torniaainen et al. (23), high doses of antipsychotics may be related to

cardiovascular mortality; but low or moderate doses may not. Therefore, the reduced risk of mortality linked to clozapine observed in this study might be derived from the use of high-dose non-clozapine antipsychotics in TRS patients. Finally, a potential bias could have been introduced if the clozapine group had a greater number of extracted HoNOS scores from initial hospital treatment stage than the non-clozapine groups. HoNOS scores tend to be higher in newly hospitalized samples than those taken at point of discharge or in the community. However, this potential bias is unlikely to have impacted the results, as we found no significant discrepancy in the distribution of treatment stages for extracted HONOS scores between clozapine and non-clozapine groups.

There are several potential pathways for the protective effect of clozapine on mortality. It may be, from a whole clinical population perspective, that the benefits of clozapine's effectiveness in TRS at reducing psychopathology over other antipsychotics, outweighs its associated risk for later cardiometabolic disease (35, 36, 38). Certainly, reducing psychotic symptoms would provide more opportunity for patients to adopt healthier lifestyles such as reduced smoking and drinking (6). The effects of regular mandatory physical health screening cannot be completely excluded. The requirement for a patient's white blood cell and neutrophil to be within normal ranges in the United Kingdom, suggests that the clozapine TRS group may have a healthier blood profiles compared to the non-clozapine group. However, abnormal blood profiles such as high leucocyte which increase the risks for cardiovascular events and all-cause mortality (39, 40) does not exclude clozapine initiation. The intensity of clinical monitoring associated with clozapine use in TRS populations, may permit earlier detection and treatment of incidental physical health problems compared to non-clozapine TRS groups; although Hayes et al.(2) did take account of this increased clinical engagement and still found the protective effect of clozapine on mortality remained. Finally, it is possible that clozapine could enhance health by reducing the risk of inflammation-related pathophysiology (41). Animal studies have provided consistent evidence on clozapine's anti-inflammatory effects in the periphery, compared to other antipsychotics such as haloperidol, risperidone and quetiapine (42). Whether through changes in lifestyle or improving later immune/inflammatory responses in patients with TRS postclozapine initiation, further investigations are warranted to examine what factors mediate the observed protective effect of clozapine on mortality.

In summary, our findings suggest that in TRS, clozapine users have a reduced mortality risk compared to patients who have not received clozapine treatment. We add to the burgeoning evidence that suggests clozapine may help reduce health inequalities experienced by individuals with TRS, and ultimately improve their life-expectancy (1, 9). Our findings support the argument for a re-evaluation of clozapine treatment within clinical settings, especially for better resourcing services which aim to improve the initiation and continuation of clozapine for patients with TRS.

Declaration of interest

RH has received research funding from Roche, Pfizer, Janssen and Lundbeck.

Funding

This work was supported by the Clinical Records Interactive Search (CRIS) system funded and developed by the National Institute for Health Research (NIHR) Mental Health Biomedical Research Centre at South London and Maudsley NHS Foundation Trust and King's College London and a joint infrastructure grant from Guy's and St Thomas' Charity and the Maudsley Charity (grant number BRC-2011-10035). JD was supported by a Medical Research Council (MRC) Clinical Research Training Fellowship (MR/L017105/1) and Psychiatry Research Trust Peggy Pollak Research Fellowship in Developmental Psychiatry. RDH was funded by a Medical Research Council (MRC) Population Health Scientist Fellowship (grant number MR/J01219X/1). GK, HS and RH have received salary support from the National Institute for Health Research (NIHR) Mental Health Biomedical Research Centre at South London and Maudsley NHS Foundation Trust and King's College London. The views expressed are those of the author(s) and not necessarily those of the NHS, the NIHR or the Department of Health. The above funding had no role in the study design; in the collection, analysis and interpretation of the data; in the writing of the report; and in the decision to submit the paper for publication.

References

- SAHA S, CHANT D, McGRATH J. A systematic review of mortality in schizophrenia: is the differential mortality gap worsening over time? *Arch Gen Psychiatry* 2007;**64**:1123–1131.
- HAYES RD, DOWNS J, CHANG C-K et al. The effect of clozapine on premature mortality: an assessment of clinical monitoring and other potential confounders. *Schizophr Bull* 2015;**41**:644–655.
- KELLY DL, McMAHON RP, LIU F et al. Cardiovascular disease mortality in patients with chronic schizophrenia treated with clozapine: a retrospective cohort study. *J Clin Psychiatry* 2010;**71**:304–311.
- KIVINIEMI M, SUVISAARI J, KOIVUMAA-HONKANEN H, HÄKKINEN U, ISOHANNI M, HAKKO H. Antipsychotics and mortality in first-onset schizophrenia: prospective Finnish register study with 5-year follow-up. *Schizophr Res* 2013;**150**:274–280.
- SERNYAK MJ, DESAI R, STOLAR M, ROSENHECK R. Impact of clozapine on completed suicide. *Am J Psychiatry* 2001;**158**:931–937.
- TIIHONEN J, LÖNNQVIST J, WAHLBECK K et al. 11-year follow-up of mortality in patients with schizophrenia: a population-based cohort study (FIN11 study). *Lancet* 2009;**374**:620–627.
- WALKER AM, LANZA LL, ARELLANO F, ROTHMAN KJ. Mortality in current and former users of clozapine. *Epidemiology* 1997;**8**:671–677.
- WIMBERLEY T, MACCABE JH, LAURSEN TM et al. Mortality and self-harm in association with clozapine in treatment-resistant Schizophrenia. *Am J Psychiatry* 2017;**174**:990–998.
- VERMEULEN JM, van ROOIJEN G, van de KERKHOFF MPJ, SUTTERLAND AL, CORRELL CU, de HAAN L. Clozapine and long-term mortality risk in patients with schizophrenia: a systematic review and meta-analysis of studies lasting 1.1–12.5 years. *Schizophr Bull* 2018. <https://doi.org/10.1093/schbul/sby052> [Epub ahead of print].
- MILLER DD. Review and management of clozapine side effects. *J Clin Psychiatry* 2000;**61**(Suppl 8):14–17; discussion 18–19.
- JOINT FORMULARY COMMITTEE. BNF 77 (British National Formulary) March 2019. 77th Revised edition. S.I.London: Pharmaceutical Press, 2019.
- LALLY J, AJNAKINA O, DI FORTI M et al. Two distinct patterns of treatment resistance: clinical predictors of treatment resistance in first-episode schizophrenia spectrum psychoses. *Psychol Med* 2016;**46**:3231–3240.
- DEMIJAH A, LAPPIN JM, STAHL D et al. Antipsychotic treatment resistance in first-episode psychosis: prevalence, subtypes and predictors. *Psychol Med* 2017;**47**:1–9.
- DEMIJAH A, EGERTON A, MURRAY RM et al. Antipsychotic treatment resistance in schizophrenia associated with elevated glutamate levels but normal dopamine function. *Biol Psychiatry* 2014;**75**:e11–e13.
- VAKHRUSHEVA J, MARINO B, STROUP TS, KIMHY D. Aerobic exercise in people with schizophrenia: neural and neurocognitive benefits. *Curr Behav Neurosci Rep* 2016;**3**:165–175.
- HARRISON J, JANLÖV M, WHEELER AJ. Patterns of clozapine prescribing in a mental health service in New Zealand. *Pharm World Sci* 2010;**32**:503–511.
- HOWES OD, VERGUNST F, GEE S, MCGUIRE P, KAPUR S, TAYLOR D. Adherence to treatment guidelines in clinical practice: study of antipsychotic treatment prior to clozapine initiation. *Br J Psychiatry* 2012;**201**:481–485.
- THOMPSON JV, CLARK JM, LEGGE SE et al. Antipsychotic polypharmacy and augmentation strategies prior to clozapine initiation: a historical cohort study of 310 adults with treatment-resistant schizophrenic disorders. *J Psychopharmacol (Oxford)* 2016;**30**:436–443.
- KADRA G, STEWART R, SHETTY H et al. Antipsychotic polypharmacy prescribing and risk of hospital readmission. *Psychopharmacology* 2018;**235**:281–289.
- BARNES TRE, PATON C. Antipsychotic polypharmacy in schizophrenia: benefits and risks. *CNS Drugs* 2011;**25**:383–399.
- CORRELL CU, FREDERICKSON AM, KANE JM, MANU P. Does antipsychotic polypharmacy increase the risk for metabolic syndrome? *Schizophr Res* 2007;**89**:91–100.
- WEINMANN S, READ J, ADERHOLD V. Influence of antipsychotics on mortality in schizophrenia: systematic review. *Schizophr Res* 2009;**113**:1–11.
- TORNAINEN M, MITTENDORFER-RUTZ E, TANSKANEN A et al. Antipsychotic treatment and mortality in schizophrenia. *Schizophr Bull* 2015;**41**:656–663.

24. KANE JM. Clozapine reduces all-cause mortality. *Am J Psychiatry* 2017;**174**:920–921.
25. TAIPALE H, MITTENDORFER-RUTZ E, ALEXANDERSON K et al. Antipsychotics and mortality in a nationwide cohort of 29,823 patients with schizophrenia. *Schizophr Res* 2018;**197**:274–280. <https://doi.org/10.1016/j.schres.2017.12.010>.
26. PERERA G, BROADBENT M, CALLARD F et al. Cohort profile of the South London and Maudsley NHS Foundation Trust Biomedical Research Centre (SLaM BRC) Case Register: current status and recent enhancement of an Electronic Mental Health Record-derived data resource. *BMJ Open* 2016;**6**:e008721.
27. NOBLE M, McLENNAN D, WILKINSON K, WHITWORTH A, BARNES N, DIBBEN C. The English indices of deprivation 2007. Department for Communities and Local Government, ed. London, UK: Queen's Printer and Controller of Her Majesty's Stationery Office, 2008.
28. WING J, CURTIS RH, BEEVOR A. Health of the Nation Outcome Scales (HoNOS). Glossary for HoNOS score sheet. *Br J Psychiatry* 1999;**174**:432–434.
29. WING JK, BEEVOR AS, CURTIS RH, PARK SB, HADDEN S, BURNS A. Health of the Nation Outcome Scales (HoNOS). Research and development. *Br J Psychiatry* 1998;**172**:11–18.
30. StataCorp. Stata statistical software: release 12. College Station, TX: StataCorp LP; Stata Corp LP, 2011.
31. STROUP TS, GERHARD T, CRYSTAL S, HUANG C, OLSON M. Comparative effectiveness of clozapine and standard antipsychotic treatment in adults with schizophrenia. *Am J Psychiatry* 2016;**173**:166–173.
32. SISKIND D, McCARTNEY L, GOLDSCHLAGER R, KISELY S. Clozapine v. first- and second-generation antipsychotics in treatment-refractory schizophrenia: systematic review and meta-analysis. *Br J Psychiatry* 2016;**209**:385–392.
33. LAND R, SISKIND D, McARDLE P, KISELY S, WINCKEL K, HOLLINGWORTH SA. The impact of clozapine on hospital use: a systematic review and meta-analysis. *Acta Psychiatr Scand* 2017;**135**:296–309.
34. CHAKOS M, LIEBERMAN J, HOFFMAN E, BRADFORD D, SHEITMAN B. Effectiveness of second-generation antipsychotics in patients with treatment-resistant schizophrenia: a review and meta-analysis of randomized trials. *Am J Psychiatry* 2001;**158**:518–526.
35. HENDERSON DC, CAGLIERO E, GRAY C et al. Clozapine, diabetes mellitus, weight gain, and lipid abnormalities: a five-year naturalistic study. *Am J Psychiatry* 2000;**157**:975–981.
36. HENDERSON DC, NGUYEN DD, COPELAND PM et al. Clozapine, diabetes mellitus, hyperlipidemia, and cardiovascular risks and mortality: results of a 10-year naturalistic study. *J Clin Psychiatry* 2005;**66**:1116–1121.
37. PROCYSHYN RM, TSE G, SIN O, FLYNN S. Concomitant clozapine reduces smoking in patients treated with risperidone. *Eur Neuropsychopharmacol* 2002;**12**:77–80.
38. LAMBERTI JS, OLSON D, CRILLY JF et al. Prevalence of the metabolic syndrome among patients receiving clozapine. *Am J Psychiatry* 2006;**163**:1273–1276.
39. LENG SX, XUE Q-L, HUANG Y, FERRUCCI L, FRIED LP, WALSTON JD. Baseline total and specific differential white blood cell counts and 5-year all-cause mortality in community-dwelling older women. *Exp Gerontol* 2005;**40**:982–987.
40. MARGOLIS KL, MANSON JE, GREENLAND P et al. Leukocyte count as a predictor of cardiovascular events and mortality in postmenopausal women: the Women's Health Initiative Observational Study. *Arch Intern Med* 2005;**165**:500–508.
41. BRUNDIN L, ERHARDT S, BRYLEVA EY, ACHTYES ED, POSTOLACHE TT. The role of inflammation in suicidal behaviour. *Acta Psychiatr Scand* 2015;**132**:192–203.
42. AL-AMIN MM, NASIR UDDIN MM, MAHMUD REZA H. Effects of antipsychotics on the inflammatory response system of patients with schizophrenia in peripheral blood mononuclear cell cultures. *Clin Psychopharmacol Neurosci* 2013;**11**:144–151.

Supporting Information

Additional Supporting Information may be found in the online version of this article:

Table S1. Mental and physical health problems and functional status* of the clozapine and non-clozapine groups in patients with treatment-resistant schizophrenia