

RESEARCH ARTICLE

Suitable Days for Plant Growth Disappear under Projected Climate Change: Potential Human and Biotic Vulnerability

Camilo Mora^{1*}, Iain R. Caldwell², Jamie M. Caldwell², Micah R. Fisher¹, Brandon M. Genco¹, Steven W. Running³

1 Department of Geography, University of Hawai'i at Manoa, Honolulu, Hawai'i, United States of America, **2** Hawai'i Institute of Marine Biology, University of Hawai'i at Manoa, Honolulu, Hawai'i, United States of America, **3** School of Forestry, University of Montana, Missoula, Montana, United States of America

* cmora@hawaii.edu



CrossMark
click for updates

 OPEN ACCESS

Citation: Mora C, Caldwell IR, Caldwell JM, Fisher MR, Genco BM, Running SW (2015) Suitable Days for Plant Growth Disappear under Projected Climate Change: Potential Human and Biotic Vulnerability. *PLoS Biol* 13(6): e1002167. doi:10.1371/journal.pbio.1002167

Academic Editor: Georgina M Mace, University College London, UNITED KINGDOM

Received: July 28, 2014

Accepted: April 30, 2015

Published: June 10, 2015

Copyright: This is an open access article, free of all copyright, and may be freely reproduced, distributed, transmitted, modified, built upon, or otherwise used by anyone for any lawful purpose. The work is made available under the [Creative Commons CC0](https://creativecommons.org/licenses/by/4.0/) public domain dedication.

Data Availability Statement: All data are provided in the Supporting Information files.

Funding: This paper was funded by a grant/cooperative agreement from the National Oceanic and Atmospheric Administration, Project R/IR-31, which is sponsored by the University of Hawaii Sea Grant College Program, SOEST, under Institutional Grant No. NA14OAR4170071 from NOAA Office of Sea Grant, Department of Commerce. The funders had no role in study design, data collection and analysis, decision to publish, or preparation of the manuscript.

Abstract

Ongoing climate change can alter conditions for plant growth, in turn affecting ecological and social systems. While there have been considerable advances in understanding the physical aspects of climate change, comprehensive analyses integrating climate, biological, and social sciences are less common. Here we use climate projections under alternative mitigation scenarios to show how changes in environmental variables that limit plant growth could impact ecosystems and people. We show that although the global mean number of days above freezing will increase by up to 7% by 2100 under “business as usual” (representative concentration pathway [RCP] 8.5), suitable growing days will actually decrease globally by up to 11% when other climatic variables that limit plant growth are considered (i.e., temperature, water availability, and solar radiation). Areas in Russia, China, and Canada are projected to gain suitable plant growing days, but the rest of the world will experience losses. Notably, tropical areas could lose up to 200 suitable plant growing days per year. These changes will impact most of the world’s terrestrial ecosystems, potentially triggering climate feedbacks. Human populations will also be affected, with up to ~2,100 million of the poorest people in the world (~30% of the world’s population) highly vulnerable to changes in the supply of plant-related goods and services. These impacts will be spatially variable, indicating regions where adaptations will be necessary. Changes in suitable plant growing days are projected to be less severe under strong and moderate mitigation scenarios (i.e., RCP 2.6 and RCP 4.5), underscoring the importance of reducing emissions to avoid such disproportionate impacts on ecosystems and people.

Author Summary

Ongoing greenhouse gas emissions can alter climate suitability for plant growth, in turn affecting biological and social systems. Using the latest generation of available climate projections we show that there will be fewer days with suitable climates for plant growth,

Competing Interests: The authors have declared that no competing interests exist. The views expressed herein are those of the authors and do not necessarily reflect the views of NOAA or any of its sub-agencies. UNIH-SEAGRANT-JC-14-35.

Abbreviations: CIA, Central Intelligence Agency; CMIP5, the Coupled Model Intercomparison Project Phase 5; NCEP, National Centers for Environmental Prediction; NPP, Net Primary Production; MODIS, Moderate Resolution Imaging Spectroradiometer; RCP, representative concentration pathway.

despite an increase in days above freezing. This decline in suitable plant growing days is due to interactions among unsuitable temperatures, light, and water availability. Our analysis shows that reductions in suitable plant growing days will be most pronounced in tropical areas and in countries that are among the poorest and most highly dependent on plant-related goods and services. Changes in suitable plant growing days will be less severe under strong and moderate mitigation scenarios, highlighting the importance of reducing emissions to ameliorate the biological and social impacts of these changes.

Introduction

Plant growth is a fundamental biological process that is strongly controlled by climate variables [1–6]. Plant productivity influences the functioning of ecosystems [7], fuels the global food web [8], and is the foundation for some of the most diverse habitats in the world [9]. Vegetation also sustains humanity [10–12], directly providing oxygen, food, fiber, and fuel (e.g., an estimated ~30%–40% of the biosphere production is currently consumed or coopted by humans [13–18]) and indirectly supporting livelihoods through jobs and revenue [19]. However, plant growth is strongly limited by climate variables such as air temperature, water availability, and solar radiation [1–4,20–22], which are changing in response to ongoing climate change [23–26]. These changes are concurrent with a greater human demand on the planet's resources, which could further stress natural ecosystems and lead to shortages in important goods and services [13,15,27–29]. While there have been considerable advances in understanding the extent to which individual [30] and multiple [4,6,31] climate variables limit plant growth [e.g. 20,23–25,32–34], comprehensive analyses integrating climate, biological, and social sciences are less common. Here we provide a global-scale perspective, using climate model projections (S1 Table) and available socioeconomic and ecological data (S2 Table), to assess how projected climate change will affect the suitability of the planet for plant growth and evaluate potential implications of these changes for ecosystems and people.

Results and Discussion

To assess the future limiting roles of temperature, water availability, and solar radiation on plant growth, we calculated changes in the number of days in a given year that are within suitable climate conditions for plant growth (i.e., suitable plant growing days) under different climate projections (see [Methods](#); data used are described in [S1–S2 Tables](#)). We first estimated climatic thresholds (i.e., for temperature, soil moisture, solar radiation, and the interactions of these three factors) within which 95% of the terrestrial vegetative matter in the world is produced (Moderate Resolution Imaging Spectroradiometer [MODIS] Net Primary Production [NPP] from 2004–2013; [S2 Table](#); see [Methods](#); [Fig 1](#)). We then used daily climate projections (from the Coupled Model Intercomparison Project Phase 5 [CMIP5]) under strong (i.e., representative concentration pathway [RCP] 2.6), moderate (i.e., RCP 4.5), and business-as-usual (i.e., RCP 8.5) mitigation scenarios to quantify the number of days in a given year that fall within climate thresholds for plant growth. We analyzed each climate variable independently as well as their interactions. We describe results based on multimodel averages because they are more accurate at predicting observed suitable growing days than most models alone (results for precision and accuracy are shown in [S2–S3 Figs](#)).

When we analyzed the limiting roles of temperature, soil moisture, and solar radiation independently, global average trends masked regional differences in the gains and losses of suitable plant growing days. As expected, we found that at mid- and high latitudes, projected warming

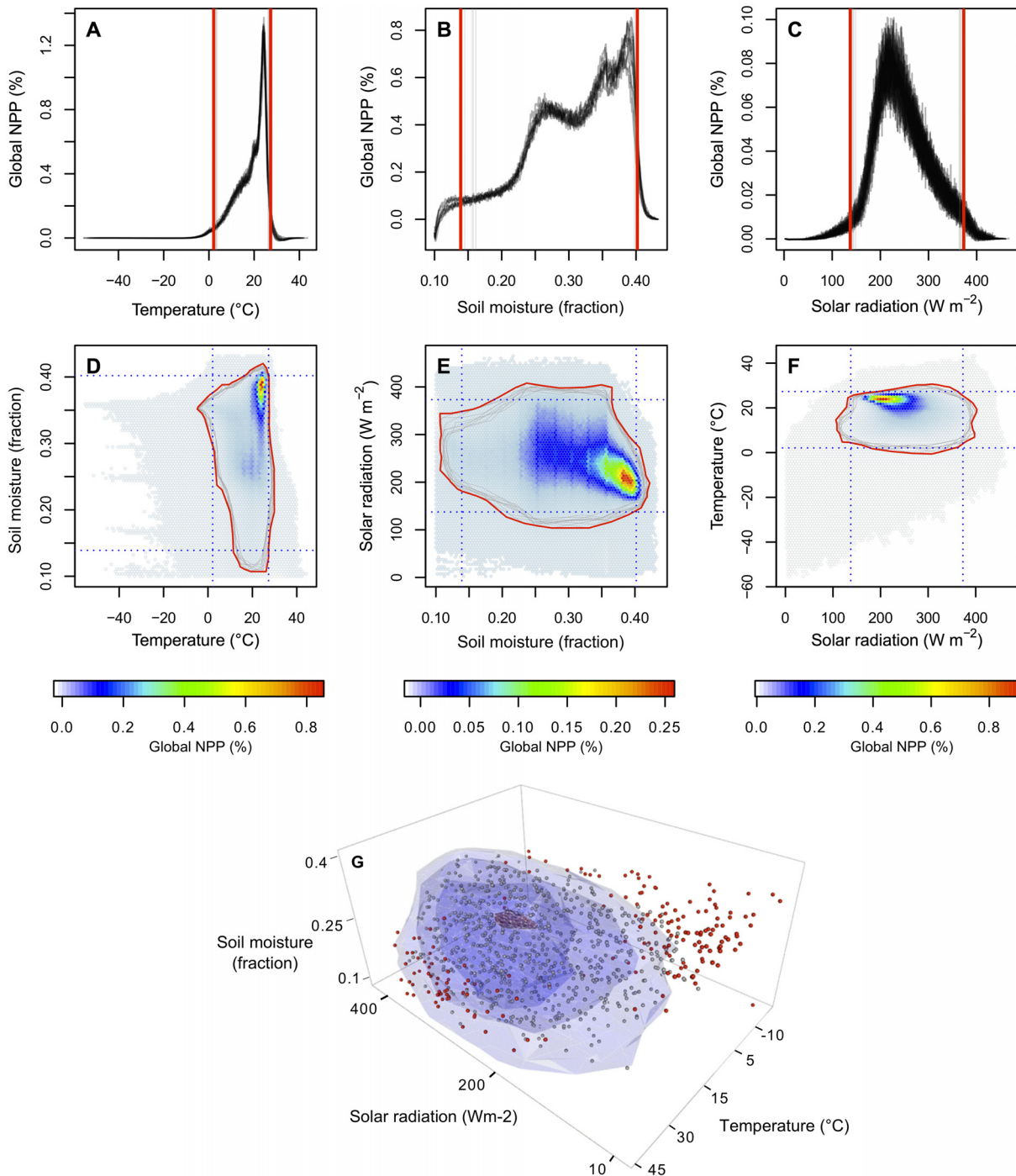


Fig 1. Climatic ranges for plant growth. Global vegetative matter produced (i.e., MODIS NPP, http://neo.sci.gsfc.nasa.gov/view.php?datasetId=MOD17A2_E_PSN) along gradients of temperature (A), soil moisture (B), solar radiation (C), and the interactions of these three variables (D–G). Climate data were obtained from National Centers for Environmental Prediction (NCEP) Reanalysis Daily Averages (http://www.esrl.noaa.gov/psd/cgi-bin/db_search/DBSearch.pl?Dataset=NCEP+Reanalysis+Daily+Averages+Surface+Flux&group=0&submit=Search). Grey lines in plots A–F indicate the climatic conditions that surround 95% of the global NPP each year between 2004 and 2013. Red lines encompass all of the yearly boundaries and define the climatic thresholds used in our analysis. A suitable plant growing day was defined as any day falling within these climatic thresholds. Points in plot G are a random subset (i.e., 1,000 points) of global climate conditions and resulting NPP (grey points indicate positive NPP/growth, and red points indicate negative NPP/respiration). As illustrated, climatic conditions occurring beyond the estimated global thresholds have commonly resulted in plant respiration. See also [S1 Fig](#). Data are provided in [S1 Data](#).

doi:10.1371/journal.pbio.1002167.g001

will reduce the number of days below freezing, resulting in more suitable growing days (the average global number of days above freezing will increase by 2%, 5%, and 7% under RCP 2.6, RCP 4.5, and RCP 8.5, respectively; [Fig 2A](#), [S5A–S5D Fig](#), [S6A–S6C Fig](#)) [35]. However, we also found that warming will more often exceed the upper thermal threshold for plant growth, which will decrease the number of suitable growing days, mainly in the tropics ([Fig 2A](#), [S5A–S5D Fig](#), [S6D–S6F Fig](#), see also [35]). By 2100, the decreasing number of suitable growing days in the tropics will offset optimistic projections at mid- and high latitudes, resulting in minimal changes in the global average number of suitable days under RCP 2.6 and RCP 4.5 but a ~26% reduction in the number of suitable growing days under RCP 8.5 (solid blue lines in [Fig 3](#)). For soil moisture and solar radiation, regional differences in the number of suitable plant growing days averaged out globally under all scenarios (solid green and yellow lines in [Fig 3](#)). Notably, projected changes in soil moisture ([Fig 2B](#)) and solar radiation ([Fig 2C](#)) showed contrasting spatial patterns. Areas that gained suitable days because of water availability also lost days because of solar radiation, and vice versa; this could be explained by coupled dynamics between rainfall and cloud cover [3].

Plant growth is strongly mediated by the extent to which multiple interacting climate variables remain within suitable conditions. When looking at the interaction between temperature and solar radiation, we found that the number of suitable plant growing days will decline more so than either variable independently (5%, 9%, and 29% under RCP 2.6, RCP 4.5, and RCP 8.5, respectively; dashed yellow lines in [Fig 3](#)). This steeper decline is driven mainly by patterns at high latitudes, where gains in suitable plant growing days due to higher temperatures are offset by the fact that those places remain limited by light (compare the intensity of blue colors in [Fig 2A](#) and [2F](#)). In contrast, the interaction between temperature and soil moisture resulted in a smaller reduction in suitable plant growing days than the losses due solely to temperature (0%, 5%, and 19% under RCP 2.6, RCP 4.5, and RCP 8.5, respectively; dashed blue lines in [Fig 3](#)). This smaller decline is driven mainly by patterns in arid regions (e.g., northern Africa, Australia, and the Middle East), where losses in suitable plant growing days due to higher temperatures are reduced because those locations are already limited by water availability (compare yellow- and white-colored areas in [Fig 2A](#) and [2D](#)). Changes in suitable plant growing days due to the interaction between solar radiation and soil moisture were minimal (-2%, 0%, and 2% under RCP 2.6, RCP 4.5, and RCP 8.5, respectively; dashed purple lines in [Fig 3](#)), although there was considerable spatial variability ([Fig 2E](#)) due to the coupling between rainfall and cloud cover. When looking at the interaction among all three climate variables, we found that the global average number of suitable days still decreased under RCP 8.5 but less so than when temperature was considered alone or in interaction with solar radiation or soil moisture (-2%, 1%, and 11% under RCP 2.6, RCP 4.5, and RCP 8.5, respectively; dashed red lines in [Fig 3](#)). Gains and losses in suitable plant growing days due to projected temperature changes alone are lessened because some regions are already limited by either solar radiation (reducing gains at high latitudes) or water availability (reducing losses in arid regions). However, there is still an overall loss in suitable plant growing days, with some regions facing unsuitable conditions for multiple reasons. In addition to fewer plant growing days, unsuitable plant climate conditions will occur sporadically throughout the year, as indicated by our metric of continuous suitable plant growing days. We found that the longest uninterrupted number of days when all three climate variables remained within suitable climate ranges reduced considerably under RCP 4.5 and RCP 8.5 (5%, 13%, and 35% under RCP 2.6, RCP 4.5, and RCP 8.5, respectively; solid red lines in [Fig 3](#)).

While some areas at high latitudes (most noticeably in Russia, China, and Canada) will gain days with suitable conditions in all three climate variables ([Fig 2G](#), [S5 Fig](#)), many other areas will actually become limited by multiple climatic variables. For example, areas across the Sahel

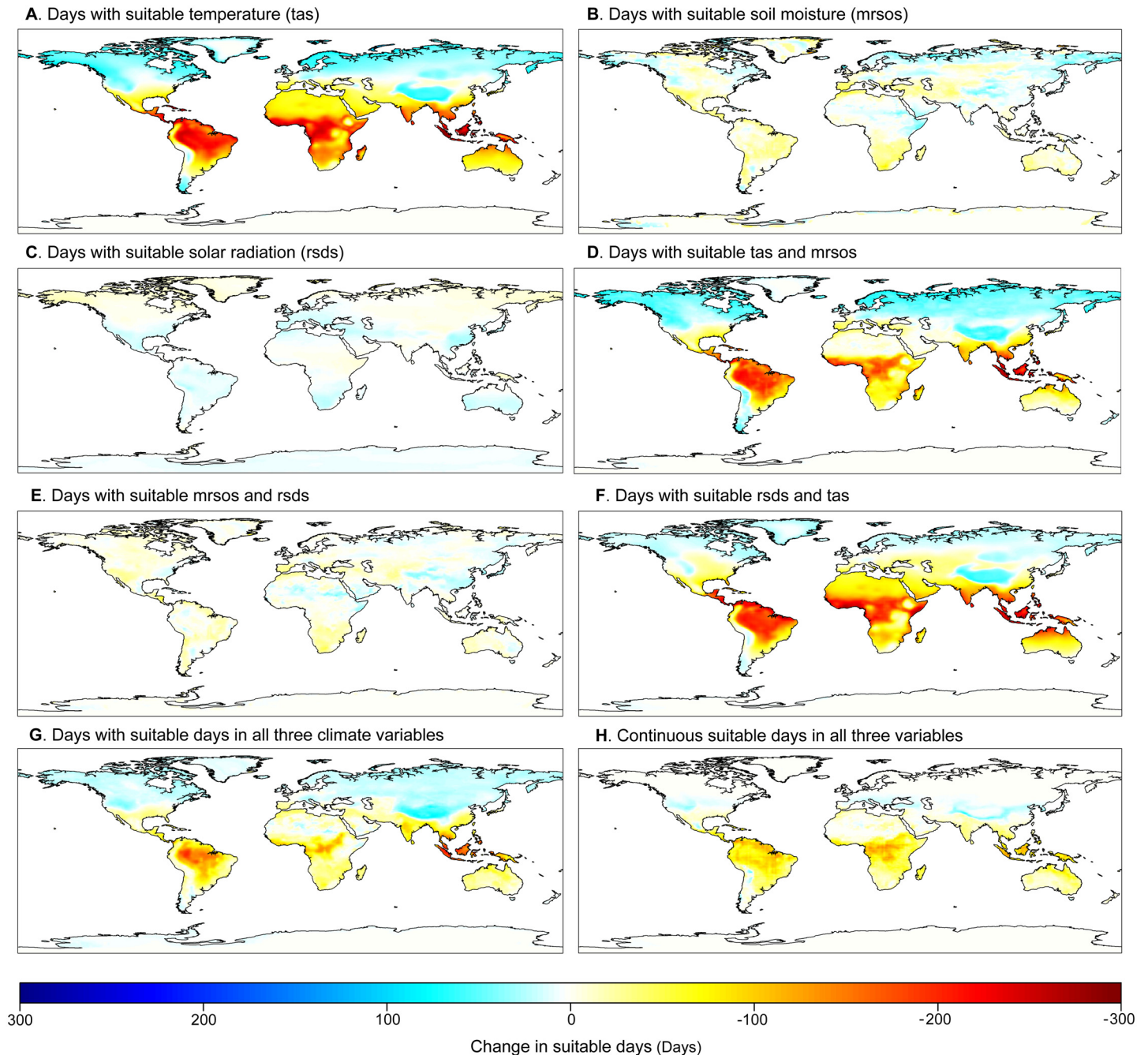


Fig 2. Spatial changes in projected suitable days for plant growth. Changes between future (i.e., the average from 2091 to 2100) and contemporary (i.e., the average from 1996 to 2005) number of days with suitable climatic conditions for plant growth under RCP 8.5 (results for all RCPs shown in S5–S7 Figs; data are provided in S2 Data). The map outline was obtained from the Central Intelligence Agency (CIA) World DataBank (<https://www.evl.uic.edu/pape/data/WDB/>).

doi:10.1371/journal.pbio.1002167.g002

that are already limited by water availability will become increasingly limited by high temperatures by 2100 (Fig 2). These results highlight the risk for synergistic responses and concerns over biological and societal adaptations given the suite of physiological traits and social capacity needed to cope simultaneously with future changes in several climate variables. Reductions

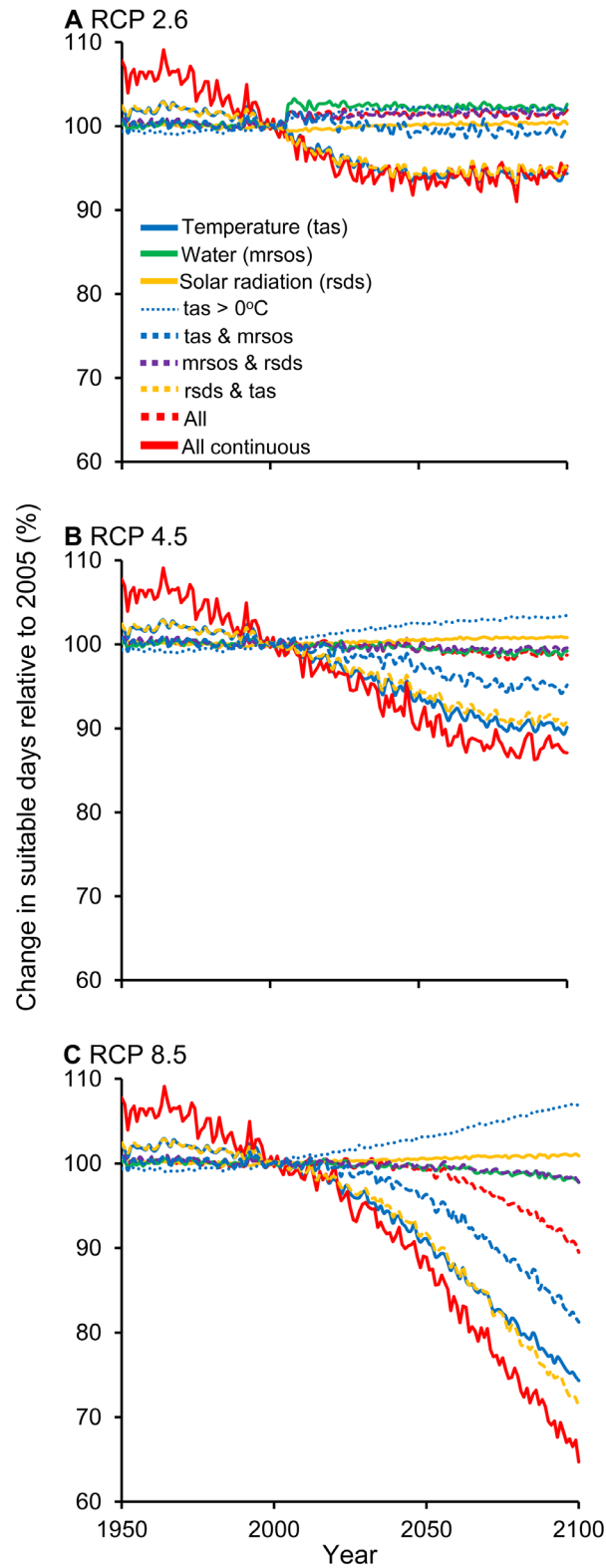


Fig 3. Global average changes in projected suitable days for plant growth. These plots illustrate the global average number of suitable plant growing days relative to contemporary values. Data are provided in [S3 Data](#).

doi:10.1371/journal.pbio.1002167.g003

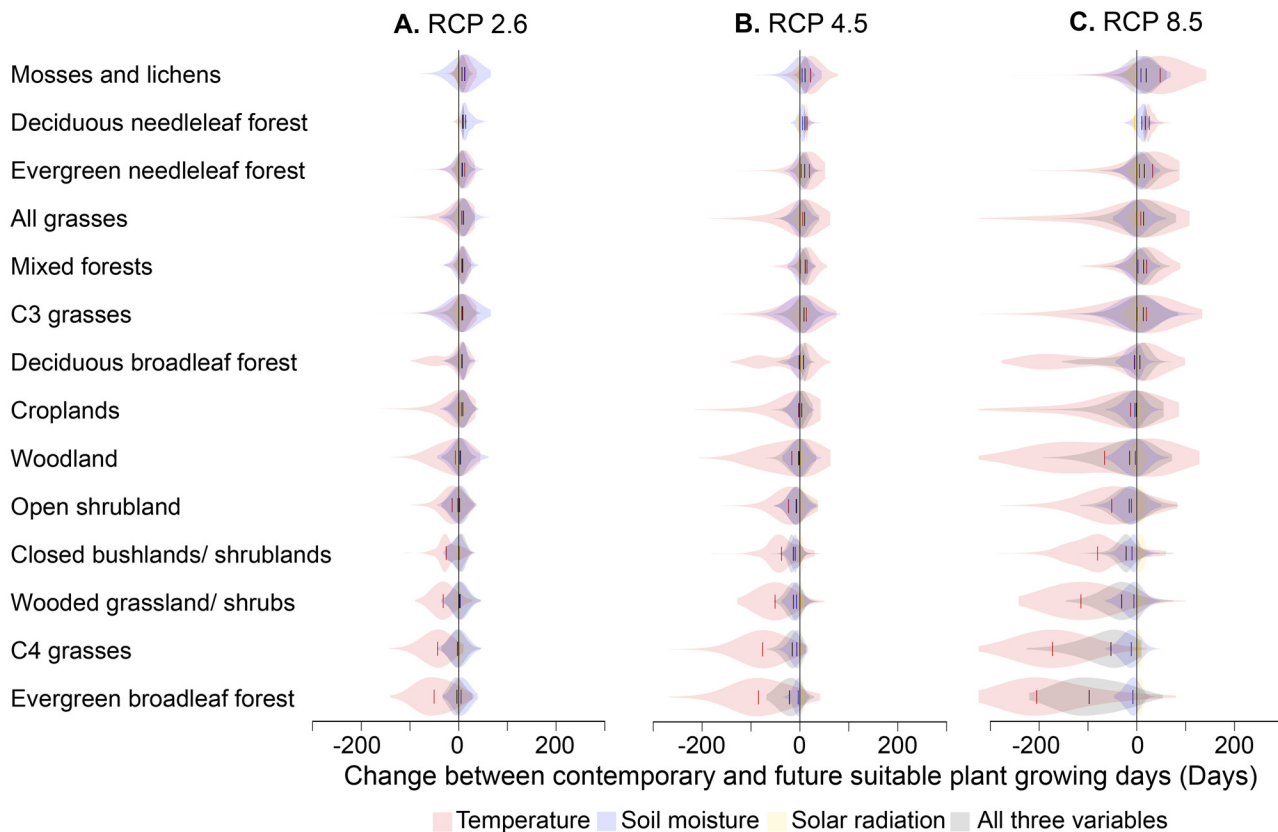


Fig 4. Biological exposure to projected changes in suitable plant growing days. Violin plots show frequency distributions of projected change between future and contemporary suitable plant growing days for all areas covered by each ecosystem; vertical colored lines indicate global median change for the given ecosystems. These plots are simply the overlay of our plant suitable days (data are provided in [S2 Data](http://webmap.ornl.gov/wcsdown/wcsdown.jsp?dg_id=10006_1)) for areas of different land uses: (http://webmap.ornl.gov/wcsdown/wcsdown.jsp?dg_id=10006_1, http://webmap.ornl.gov/wcsdown/wcsdown.jsp?dg_id=20042_6, and http://webmap.ornl.gov/wcsdown/wcsdown.jsp?dg_id=20042_8).

doi:10.1371/journal.pbio.1002167.g004

in the number of days with suitable climate conditions for plant growth also underscore an internal discrepancy of Earth System Models: while these models project dramatic enhancements of NPP [5,20,36], our results show multiple climate variables becoming limiting for plant growth, particularly in tropical areas, which could result in considerable reductions in future NPP (S4 Fig). This discrepancy likely reflects an overemphasis of CO₂ fertilization in modeling NPP while failing to account for the limiting roles of other climatic variables and disturbances [5,22,36]. Furthermore, reductions in plant growth due to unsuitable growing days could lead to feedbacks whereby climate change is even more extreme, leading to even less suitable conditions for plant growth. The fact that unsuitable climatic conditions will occur more sporadically throughout the year highlights the potential for extreme events (e.g., heat waves or drought) to truncate the growing period, which may impair plant growth and even cause mortality [5,21,37]. Reichstein et al. [5] recently concluded that “climate extremes. . . can lead to a decrease in regional ecosystem carbon stocks and therefore have the potential to negate an expected increase in terrestrial carbon uptake,” further highlighting an important research area for improvement of Earth System Models.

Most of the world’s ecosystems and cultivated areas will be negatively affected by changes in the number of suitable growing days if climate change continues, possibly triggering climate feedbacks. Tropical ecosystems in particular (e.g., broadleaf evergreen forests; Fig 4) will lose

suitable growing days due to temperatures exceeding the upper limit of the thermal range in combination with water failing to meet plant growth requirements. By 2100, for example, broadleaf evergreen forests will lose about 3 wk of suitable growing days under RCP 2.6 (Fig 4A) but lose nearly 3 mo under RCP 8.5 (Fig 4C). Prolonged unsuitable climatic conditions can prevent development of tropical forests [37] and result in tree die-offs, either directly from intolerance to altered climate conditions or indirectly through increased vulnerability to infestations by insects and pathogens [1,2,21]. In turn, such increased tree mortality can trigger ecological responses, including changes in plant community composition (e.g., from sensitive to less-sensitive species) and range contractions or expansions [2]. Unsuitable climate conditions can lead to increased plant respiration, potentially turning forests into carbon sources rather than carbon sinks [4,5]. At the same time, fewer freezing days at higher latitudes could potentially accelerate carbon releases through microbial decomposition [38,39], and this excess carbon might not be sequestered by plants, as higher latitudes will remain limited by insufficient solar radiation (S6G–S6I Fig). Finally, the impacts of climate change on plant growth could alter ecological interactions among species with potential cascading effects on food webs; integrating changes in suitable plant growing days and NPP within recently developed General Ecosystem Models [40] could provide some insights into the magnitude of these changes.

Losses in suitable plant growing days can translate into losses of food, fiber, fuel, and associated jobs and revenue, with potentially negative effects in countries with high reliance on those goods and services, particularly those with minimal capacity to adapt. Here, we assessed human vulnerability to changes in the number of suitable plant growing days by using a common method that distinguishes populations depending on their (i) “exposure” to environmental change, (ii) “dependency” on potentially impacted goods and services, and (iii) social “adaptability” [41–44]. We used changes in suitable plant growing days (i.e., between contemporary and 2100, Fig 2G) as our metric of exposure and collected agriculture-related and economic data to quantify dependency and adaptability (see Methods). Under RCP 2.6, no country will experience high losses or high gains in suitable plant growing days (i.e., reductions or gains greater than 30% of the current suitable growing period, S3 Table). However, human vulnerability will be much greater under RCP 8.5. If climate change were to continue under this scenario, ~3,400 million people will live in countries facing reductions of 30% or more suitable plant growing days; of those people, ~2,900 million are highly dependent on plant-related goods and services, and ~2,100 million of those are in low-income countries (S3 Table). A few countries in the Americas and all countries in Oceania, Asia, and Africa, with the exception of Australia, New Zealand, Russia, South Africa, Namibia, Algeria, and Libya, are highly vulnerable to reductions in plant growing days (Fig 5). Under RCP 8.5, only ~270 million people live in countries projected to experience medium to high gains (i.e., greater than 10%) in the number of suitable plant growing days (e.g., Iceland, Norway, Sweden). Vulnerability for all countries is shown in Fig 5, S3 Table, and S2 Data.

Our study adds to the understanding of projected changes in climate suitability for plant growth, highlighting where ecosystems and human populations could be more vulnerable to such changes. Although our study confirms a benefit of ongoing climate change on plant growing conditions at higher latitudes because of fewer freezing days, this considerably underestimates the full extent of consequences of projected climate changes, particularly under business-as-usual projections. Consideration of an upper thermal limit and interactions with plant growth thresholds in additional climatic variables resulted in the opposite trend: global decreases in the number of suitable plant growing days by 2100 (Fig 2). The unprecedented rate and number of climate variables becoming limiting for plant growth could challenge the capacity of species to adapt, with the potential to negatively impact terrestrial ecosystems and trigger climate feedbacks. Potential reductions in plant growth associated with fewer plant

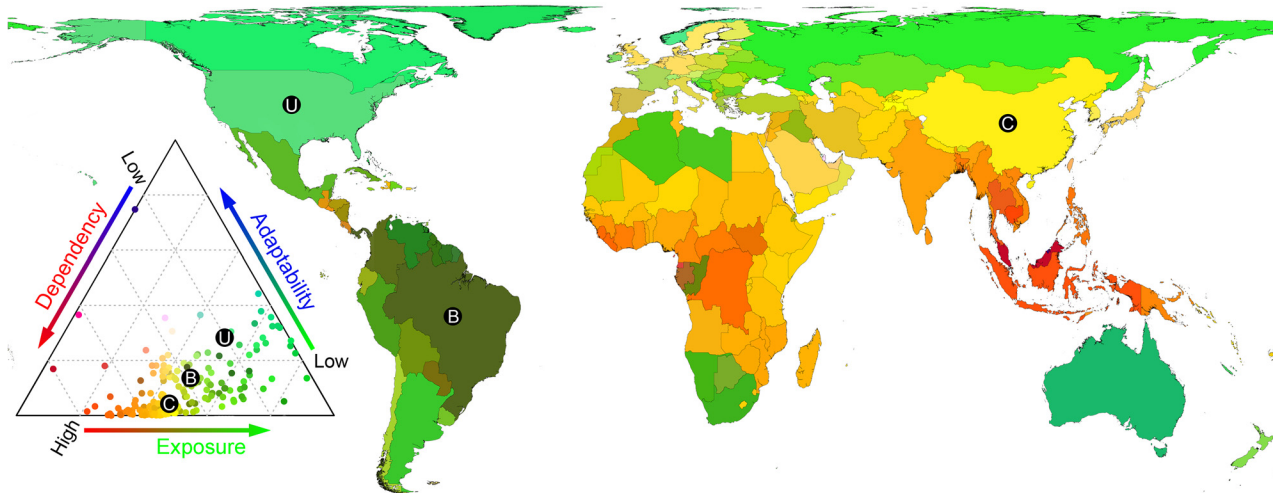


Fig 5. Human vulnerability to projected changes in suitable plant growing days. Human vulnerability is quantified as the combined effect of dependency, exposure, and adaptability, which are displayed along a red-green-blue gradient (colors in the triangle correspond to colors in the map). Points in the triangle represent each of the 194 countries analyzed, with the positions of United States (U), China (C), and Brazil (B) indicated for reference. The map outline was obtained from the CIA World DataBank (S2 Table). Data are provided in S4 Data.

doi:10.1371/journal.pbio.1002167.g005

growing days are particularly worrisome given that the largest impacts are expected to affect the poorest and most agriculturally dependent countries in the world (Fig 5). These effects will be further exacerbated by increasing human appropriation of NPP associated with human population growth (Fig 6, S4 Fig). On a positive note, our study also indicated that projected changes in suitable plant growing days are minimal under RCP 2.6, underscoring the importance of reducing emissions to avoid such disproportionate impacts on ecosystems and people.

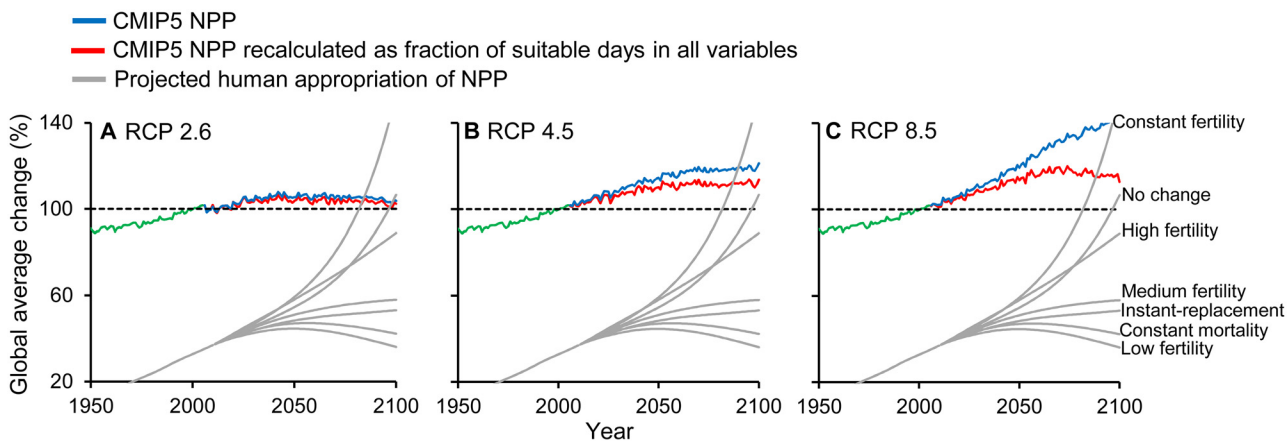


Fig 6. Projected changes in NPP under different scenarios of emissions and human consumption of terrestrial NPP. Plots A–C show the global average change in NPP under different scenarios before (blue lines) and after (red lines) accounting for unsuitable plant growing days. Grey lines indicate the projected global human appropriation of terrestrial NPP (i.e., modern per capita appropriation of NPP multiplied by human population projections under different scenarios). Additional details are shown in S4 Fig. Data are provided in S5 Data.

doi:10.1371/journal.pbio.1002167.g006

Methods

Quantifying Plant Growth Climatic Thresholds

We used the rate at which terrestrial vegetative matter is produced (NPP) as a proxy for plant growth. Derived values of NPP were obtained from 8-d averaged MODIS data (the finest temporal resolution available; data source in [S2 Table](#)). MODIS NPP data are modelled using remotely sensed satellite data and have been cross-validated by other studies [45]. To estimate climate thresholds for plant growth, we overlaid 8-d maps of derived NPP onto 8-d maps of observed temperature (i.e., near-surface air temperature), water availability (using soil moisture in upper 10 cm of the soil column as proxy), and solar radiation (i.e., surface downwelling shortwave radiation) (sources provided in [S2 Table](#)). This allowed us to calculate the total amount of 8-d NPP produced along gradients of each of the three climate variables and their interactions. We defined NPP climatic thresholds as the boundaries that surround the climatic conditions under which 95% of the world's NPP occurs for each variable ([Fig 1A–1C](#)) and their interactions ([Fig 1D–1G](#)), for each year between 2004 and 2013. For our analysis, we used the boundaries encompassing all of the yearly boundaries ([Fig 1](#)) and define suitable growing days as those days in which projected climatic conditions fall within that multiyear boundary. While some plants grow under extreme conditions, relatively little NPP occurs in these primarily cold and arid places (as noted by the steep declines of NPP along climatic variables in [Fig 1](#)); using more than 95% of global NPP to include these extremist plants will considerably broaden the climate thresholds and overestimate global suitability for the majority of plant growth. An upper threshold for radiation was rarely exceeded ([S7B Fig](#)), but we retained it to maintain consistency with the analysis of other climatic variables. To compare global thresholds to ecosystem-specific thresholds, we repeated the above approach using NPP within cells that overlap each of 14 land-cover types (based on satellite-derived maps of dominant ecosystem type; [S8 Fig](#), data sources provided in [S2 Table](#) under “Land use data”). We used global thresholds to calculate suitable plant growing days, as they encompassed the bulk productivity of most ecosystems ([S8 Fig](#)). However, some ecosystems that already frequently experience extreme conditions surpassed global thresholds (e.g., semidesert wooded grassland/shrubs, [S8 Fig](#)), suggesting that these ecosystems could better cope with future climate projections. Climatic thresholds were also very similar if they were weighted by the area where climatic conditions occur ([S1](#) and [S8 Figs](#)). All data sources are listed in [S2 Table](#).

Calculating Suitable Plant Growing Days

To estimate the number of suitable days for plant growth each year, we counted the total or consecutive number of days in a year in which climatic conditions (i.e., temperature, soil moisture, solar radiation, and the interactions of these three variables) fall within the global thresholds for plant growth. We obtained daily projections of temperature, soil moisture, and solar radiation from recent Earth System Models developed as part of the Coupled Model Intercomparison Project Phase 5 to the Fifth Assessment Report of the Intergovernmental Panel on Climate Change ([S1 Table](#)). Daily projections run from 1950 to 2005 simulating anthropogenic and natural climate forcing (i.e., “historical” experiment) and from 2006 to 2100 under three alternative representative concentration pathways: RCP 2.6, RCP 4.5, and RCP 8.5. CO₂ concentrations will reach ~400, ~530, and ~930 ppm by 2100, under RCP 2.6, RCP 4.5, and RCP 8.5, respectively. As of November 2014, there were 14 Earth System Models from 12 centers in eight countries that modeled temperature, soil moisture, and solar radiation at a daily resolution for at least one of the three RCPs ([S1 Table](#)) (Note: all Earth System Models that we used include feedbacks of plant production on water balance). In total, for all variables and projections, we

processed ~1.8 million daily global maps. We quantified the number of suitable plant growing days independently for each model and averaged the results to estimate the multimodel average. Changes in the number of suitable plant growing days (Fig 2) were calculated by subtracting contemporary (1996 to 2005) from future averages (2091 to 2100); decadal averages were chosen to minimize aliasing by interannual variability. To assess exposure of different terrestrial ecosystems to projected changes in climate suitability (Fig 4), we calculated the mean and frequency distribution of changes in suitable plant growing days (Fig 2A–2C and 2G) for cells dominated by each of 14 land-cover types. All data sources are indicated in S2 Table.

Assessing Human Vulnerability

“Vulnerability” was assessed in the traditional sense of determining human “exposure” to environmental change, “dependency” in terms of food, jobs, and revenue at stake, and “adaptability” in terms of wealth, assuming that richer countries will have more capacity to respond [41–43]. “Exposure” was quantified as changes in climate suitability for plant growth categorized for each country as follows: “high loss” for countries experiencing reductions in suitable plant growing days in excess of 30%, “medium loss” for countries experiencing losses of 30% to 10%, “no change” for countries that gain or lose up to 10%, “medium gain” for countries gaining 10% to 30%, and “high gain” for countries gaining in excess of 30% more days. “Dependency” was quantified by adding three proportional metrics for each country: percentage of gross domestic product contributed by agricultural revenue, percentage of the workforce in the agricultural sector, and percentage of NPP appropriated by people (from food, paper, wood, meat, fiber, and animal by-products) [14]. Countries were categorized as having “low,” “medium,” or “high” dependency if their cumulative percentages in those three goods and services ranged from 0% to 33%, >33% to 66%, or >66%, respectively. Finally, “adaptability” was quantified as per capita gross domestic product, under the assumption that richer countries will have greater access to a wider range of adaptive strategies. For the purpose of classification, we used the World Bank categorization of low-, medium-, and high-income countries depending on whether annual per capita gross domestic product was less than US\$4,000, between US\$4,000 and US\$12,000, or greater than US\$12,000, respectively. All data sources are shown in S2 Table.

General Considerations and Caveats

Variability in thresholds. To project global plant growth suitability, we used thresholds broad enough to encompass the current sensitivities of most plants (S8 Fig) and kept them static for comparison, but we recognize that those thresholds can change. Thresholds could change either at the species level (through genetic adaptation, but see [46]) or at the community level (through replacement of species with those that are more tolerant today [2] or those that have greater adaptive capacity [47]). It would be expected that more diverse ecosystems will have greater capacity to deal with projected unsuitable climates compared to monoculture systems (i.e., more diverse ecosystems should have a greater variety of thresholds [7]). This highlights the vulnerability of many agricultural systems and associated human vulnerability to future climatic changes, as necessary adjustments to farming practices (e.g., using more tolerant crop varieties, irrigation, etc.) are likely to be costly and some of the most extreme reductions in plant growing days are expected in tropical countries with limited economic capacity (Figs 2 and 5). Interactions among CO₂ and climatic variables could also broaden or narrow modern thresholds. For instance, elevated CO₂ is known to increase resistance to drought by plants closing their stoma [48,49]. However, under warming conditions the closing of the stoma may induce overheating (by preventing transpiration) and/or if sustained could decrease carbon fixation [50,51]. Likewise, the temperature ranges over which elevated CO₂ enhances plant growth are

strongly mediated by water availability [49]. Our paper described climate suitability for plant production overall, but we also provide a web-user interface that allows for repetition of our analysis with tolerance thresholds related to different adaptation scenarios and species- and/or ecosystem-specific thresholds (<http://128.171.126.15/growingdays/index.html>).

Correlative nature of our approach. Our analysis uses the modern distribution of where plants grow and assumes that climatic conditions at those locations are suitable. Although this is a correlative approach, it provides important relative insights into how plant growth could be affected by alternative future climates.

Additional global sources of NPP. It should be noted that a major source of the world's productivity includes freshwater and marine plants, which could not be incorporated into the scope of this study because they are not limited by the same climatic conditions (e.g., soil moisture) as terrestrial NPP. Our approach could be replicated for those systems using the climatic variables that limit their productivity. This would represent another interesting study.

Population projections and human vulnerability. Our calculations for the number of people vulnerable to projected changes in suitable plant growing days were based on current population numbers (as of 2012), but populations are projected to increase to 9,600–12,300 million people by 2100 [52]. These projections suggest that the number of people vulnerable to projected changes in suitable plant growing days will be higher than indicated in this paper. Human vulnerability could be further exacerbated because projected increases in human population are likely to result in a higher demand for diminishing plant-associated resources (Fig 6, S4 Fig, [29]).

Supporting Information

S1 Data. Data for Fig 1.

(XLSX)

S2 Data. Data for Fig 2.

(XLS)

S3 Data. Data for Fig 3.

(XLSX)

S4 Data. Data for Fig 5.

(XLS)

S5 Data. Data for Fig 6.

(XLSX)

S6 Data. Data for S2 Fig.

(XLSX)

S7 Data. Data for S3 Fig.

(XLSX)

S8 Data. Data for S6 Fig.

(XLS)

S9 Data. Data for S7 Fig.

(XLSX)

S1 Fig. Comparison of climatic ranges for plant growth with and without weighting by area.

(DOCX)

S2 Fig. Robustness of Earth System Models in estimating suitable days for plant growth.
(DOCX)

S3 Fig. Multimodel uncertainty.
(DOCX)

S4 Fig. Projected changes in NPP from CMIP5 Earth System Models before and after accounting for unsuitable plant growing days and their comparison with projected human appropriation of NPP.
(DOCX)

S5 Fig. Projected changes in suitable days for plant growth.
(DOCX)

S6 Fig. Specific climatic thresholds limiting plant growth.
(DOCX)

S7 Fig. Temporal changes in the relative importance of limiting climatic variables for plant growth.
(DOCX)

S8 Fig. Climatic thresholds by ecosystems and land use types.
(DOCX)

S1 Table. Earth System Models analyzed.
(DOCX)

S2 Table. Data sources.
(DOCX)

S3 Table. Human vulnerability to changes in suitable days for plant growth.
(DOCX)

Acknowledgments

We thank the different data providers mentioned in [S1 Table](#) and [S2 Table](#) for making their data freely available. We thank Claude Caldwell for constructive feedback and Roberto Venegas for his early involvement in this paper. We also want to thank David Johnson, Bob Gerlt, Sathya Prasad, and Mark Smith from the Environmental Systems Research Institute for their help with the interactive web-page. This paper was developed as part of the graduate course on “Methods for Large-Scale Analyses” in the Department of Geography, University of Hawaii at Manoa.

Author Contributions

Conceived and designed the experiments: CM IRC JMC MRF BMG SWR. Analyzed the data: CM IRC JMC MRF BMG. Wrote the paper: CM IRC JMC MRF BMG SWR.

References

1. Allen CD, Macalady AK, Chenchouni H, Bachelet D, McDowell N, et al. (2010) A global overview of drought and heat-induced tree mortality reveals emerging climate change risks for forests. *Forest Ecol Manag* 259: 660–684.
2. Anderegg WRL, Kane JM, Anderegg LDL (2013) Consequences of widespread tree mortality triggered by drought and temperature stress. *Nature Clim Change* 3: 30–36.

3. Graham EA, Mulkey SS, Kitajima K, Phillips NG, Wright SJ (2003) Cloud cover limits net CO₂ uptake and growth of a rainforest tree during tropical rainy seasons. *P Natl Acad Sci USA* 100: 572–576. PMID: [12518044](#)
4. Zhao M, Running SW (2010) Drought-induced reduction in global terrestrial net primary production from 2000 through 2009. *Science* 329: 940–943. doi: [10.1126/science.1192666](#) PMID: [20724633](#)
5. Reichstein M, Bahn M, Ciais P, Frank D, Mahecha MD, et al. (2013) Climate extremes and the carbon cycle. *Nature* 500: 287–295. doi: [10.1038/nature12350](#) PMID: [23955228](#)
6. Yi C (2014) Climate control of terrestrial carbon exchange across biomass and continents. *IOPScience* 5: 1–14.
7. Loreau M, Naeem S, Inchausti P, Bengtsson J, Grime JP, et al. (2001) Biodiversity and ecosystem functioning: Current knowledge and future challenges. *Science* 294: 804–808. PMID: [11679658](#)
8. Currie DJ, Mittelbach GG, Cornell HV, Field R, Guegan JF, et al. (2004) Predictions and tests of climate-based hypotheses of broad-scale variation in taxonomic richness. *Ecol Lett* 7: 1121–1134.
9. Connell JH (1978) Diversity in tropical rain-forests and coral reefs. *Science*: 1302–1310. PMID: [663613](#)
10. Tubiello FN, Soussana J-F, Howden SM (2007) Crop and pasture response to climate change. *P Natl Acad Sci USA* 104: 19686–19690. PMID: [18077401](#)
11. Lobell DB, Gourdji SM (2012) The influence of climate change on global crop productivity. *Plant Physiol* 160: 1686–1697. doi: [10.1104/pp.112.208298](#) PMID: [23054565](#)
12. Foley JA, DeFries R, Asner GP, Barford C, Bonan G, et al. (2005) Global consequences of land use. *Science* 309: 570–574. PMID: [16040698](#)
13. Vitousek PM, Ehrlich PR, Ehrlich AH, Matson PA (1986) Human appropriation of the products of photosynthesis. *Bioscience* 36: 368–373.
14. Imhoff ML, Bounoua L, Ricketts T, Loucks C, Harriss R, et al. (2004) Global patterns in human consumption of net primary production. *Nature* 429: 870–873. PMID: [15215863](#)
15. Haberl H, Erb KH, Krausmann F, Gaube V, Bondeau A, et al. (2007) Quantifying and mapping the human appropriation of net primary production in Earth's terrestrial ecosystems. *P Natl Acad Sci USA* 104: 12942–12947. PMID: [17616580](#)
16. Wright DH (1990) Human impacts on energy flow through natural ecosystems, and implications for species endangerment. *Ambio*: 189–194.
17. Krausmann F, Erb K-H, Gingrich S, Haberl H, Bondeau A, et al. (2013) Global human appropriation of net primary production doubled in the 20th century. *P Natl Acad Sci USA* 110: 10324–10329. doi: [10.1073/pnas.1211349110](#) PMID: [23733940](#)
18. Rojstaczer S, Sterling SM, Moore NJ (2001) Human appropriation of photosynthesis products. *Science* 294: 2549–2552. PMID: [11752576](#)
19. Pimentel D, McNair M, Buck L, Pimentel M, Kamil J (1997) The value of forests to world food security. *Hum Ecol* 25: 91–120.
20. Huntingford C, Zelazowski P, Galbraith D, Mercado LM, Sitch S, et al. (2013) Simulated resilience of tropical rainforests to CO₂-induced climate change. *Nat Geosci* 6: 268–273.
21. Anderegg WR, Plavcová L, Anderegg LD, Hacke UG, Berry JA, et al. (2013) Drought's legacy: multi-year hydraulic deterioration underlies widespread aspen forest die-off and portends increased future risk. *Glob Change Biol* 19: 1188–1196. doi: [10.1111/gcb.12100](#) PMID: [23504895](#)
22. De Boeck H, Verbeeck H (2011) Drought-associated changes in climate and their relevance for ecosystem experiments and models. *Biogeosciences* 8: 1121–1130.
23. Dai A (2013) Increasing drought under global warming in observations and models. *Nature Clim Change* 3: 52–58.
24. Diffenbaugh NS, Field CB (2013) Changes in ecologically critical terrestrial climate conditions. *Science* 341: 486–492. doi: [10.1126/science.1237123](#) PMID: [23908225](#)
25. Prudhomme C, Giuntoli I, Robinson EL, Clark DB, Arnell NW, et al. (2013) Hydrological droughts in the 21st century, hotspots and uncertainties from a global multimodel ensemble experiment. *P Natl Acad Sci USA* 111: 3262–3267.
26. Orlowsky B, Seneviratne S (2013) Elusive drought: uncertainty in observed trends and short-and long-term CMIP5 projections. *Hydrol Earth Syst Sc* 17: 1765–1781.
27. Running SW (2012) A measurable planetary boundary for the biosphere. *science* 337: 1458–1459. PMID: [22997311](#)
28. Foley JA, Monfreda C, Ramankutty N, Zaks D (2007) Our share of the planetary pie. *P Natl Acad Sci USA* 104: 12585–12586. PMID: [17646656](#)

29. Mora C (2014) Revisiting the environmental and socioeconomic effects of population growth: a fundamental but fading issue in modern scientific, public, and political circles. *Ecol Soc* 19: 38.
30. Sheffield J, Wood EF, Roderick ML (2012) Little change in global drought over the past 60 years. *Nature* 491: 435–438. doi: [10.1038/nature11575](https://doi.org/10.1038/nature11575) PMID: [23151587](https://pubmed.ncbi.nlm.nih.gov/23151587/)
31. Jolly WM, Nemani R, Running SW (2005) A generalized, bioclimatic index to predict foliar phenology in response to climate. *Glob Change Biol* 11: 619–632.
32. Zelazowski P, Malhi Y, Huntingford C (2011) Changes in the potential distribution of humid tropical forest on a warmer planet. *Phil Trans R Soc A* 369: 137–160. doi: [10.1098/rsta.2010.0238](https://doi.org/10.1098/rsta.2010.0238) PMID: [21115517](https://pubmed.ncbi.nlm.nih.gov/21115517/)
33. Malhi Y (2009) Exploring the likelihood and mechanism of a climate-change-induced dieback of the Amazon rainforest. *P Natl Acad Sci USA* 106: 20610–20615. doi: [10.1073/pnas.0804619106](https://doi.org/10.1073/pnas.0804619106) PMID: [19218454](https://pubmed.ncbi.nlm.nih.gov/19218454/)
34. Hou S, Lei L, Zeng Z (2013) The response of global net primary productivity (NPP) to CO₂ increasing and climate change: evaluation of couple model simulations. *J Food Agric Environ* 11: 937–944.
35. Sillmann J, Kharin VV, Zhang X, Zwiers FW, Bronaugh D (2013) Climate extremes indices in the CMIP5 multimodel ensemble: Part 2. Future climate projections. *J Geophys Res Atmos* 118: 2473–2493.
36. Ciais P (2013) Carbon and other biogeochemical cycles: Final draft underlying scientific technical assessment. IPCC Secretariat, Geneva.
37. Maslin M (2004) Ecological versus climatic thresholds. *Science* 306: 2197–2198. PMID: [15622563](https://pubmed.ncbi.nlm.nih.gov/15622563/)
38. Schuur EA (2011) High risk of permafrost thaw. *Nature* 480: 32–33. doi: [10.1038/480032a](https://doi.org/10.1038/480032a) PMID: [22129707](https://pubmed.ncbi.nlm.nih.gov/22129707/)
39. Mori AS, Fujii S, Kurokawa H (2014) Ecological consequences through responses of plant and soil communities to changing winter climate. *Ecol Res* 29: 547–559.
40. Harfoot MJB, Newbold T, Tittensor DP, Emmott S, Hutton JM, et al. (2014) Emergent global patterns of ecosystem structure and function from a mechanistic general ecosystem model. *PLoS Biol*: e1001841. doi: [10.1371/journal.pbio.1001841](https://doi.org/10.1371/journal.pbio.1001841) PMID: [24756001](https://pubmed.ncbi.nlm.nih.gov/24756001/)
41. Smit B, Wandel J (2006) Adaptation, adaptive capacity and vulnerability. *Global Environ Chang* 16: 282–292.
42. Adger WN, Hughes TP, Folke C, Carpenter SR, Rockstrom J (2005) Social-ecological resilience to coastal disasters. *Science* 309: 1036–1039. PMID: [16099974](https://pubmed.ncbi.nlm.nih.gov/16099974/)
43. Allison EH, Perry AL, Badjeck MC, Adger WN, Brown K, et al. (2009) Vulnerability of national economies to the impacts of climate change on fisheries. *Fish Fish* 10: 173–196. doi: [10.1007/s10162-009-0161-3](https://doi.org/10.1007/s10162-009-0161-3) PMID: [19247714](https://pubmed.ncbi.nlm.nih.gov/19247714/)
44. Mora C, Wei C-L, Rollo A, Amaro T, Baco AR, et al. (2013) Biotic and human vulnerability to projected changes in ocean biogeochemistry over the 21st century. *PLoS Biol* 11: e1001682. doi: [10.1371/journal.pbio.1001682](https://doi.org/10.1371/journal.pbio.1001682) PMID: [24143135](https://pubmed.ncbi.nlm.nih.gov/24143135/)
45. Zhao M, Running SW (2011) Response to comments on “Drought-induced reduction in global terrestrial net primary production from 2000 through 2009”. *Science* 333: 1093–1093. doi: [10.1126/science.333.6046.1093-a](https://doi.org/10.1126/science.333.6046.1093-a) PMID: [21868657](https://pubmed.ncbi.nlm.nih.gov/21868657/)
46. Jump AS, Penuelas J (2005) Running to stand still: adaptation and the response of plants to rapid climate change. *Ecol Lett* 8: 1010–1020.
47. Hoffmann AA, C.M. S (2011) Climate change and evolutionary adaptation. *Nature* 470: 479–485. doi: [10.1038/nature09670](https://doi.org/10.1038/nature09670) PMID: [21350480](https://pubmed.ncbi.nlm.nih.gov/21350480/)
48. Oliver RJ, Finch JW, Taylor G (2009) Second generation bioenergy crops and climate change: a review of the effects of elevated atmospheric CO₂ and drought on water use and the implications for yield. *GCB Bioenergy* 1: 97–114.
49. Way DA (2013) Will rising CO₂ and temperatures exacerbate the vulnerability of trees to drought? *Tree Physiol* 33: 775–778. doi: [10.1093/treephys/tp01069](https://doi.org/10.1093/treephys/tp01069) PMID: [23999136](https://pubmed.ncbi.nlm.nih.gov/23999136/)
50. Sala A (2009) Lack of direct evidence for the carbon-starvation hypothesis to explain drought-induced mortality in trees. *P Natl Acad Sci USA* 106: E68. doi: [10.1073/pnas.0904580106](https://doi.org/10.1073/pnas.0904580106) PMID: [19506239](https://pubmed.ncbi.nlm.nih.gov/19506239/)
51. Adams HD, Guardiola-Claramonte M, Barron-Gafford GA, Villegas JC, Breshears DD, et al. (2009) Reply to Sala: Temperature sensitivity in drought-induced tree mortality hastens the need to further resolve a physiological model of death. *P Natl Acad Sci USA* 106: E69–E69. doi: [10.1073/pnas.0904580106](https://doi.org/10.1073/pnas.0904580106) PMID: [19506239](https://pubmed.ncbi.nlm.nih.gov/19506239/)
52. Gerland P, Raftery AE, Ševčíková H, Li N, Gu D, et al. (2014) World population stabilization unlikely this century. *Science* 346: 234–237. doi: [10.1126/science.1257469](https://doi.org/10.1126/science.1257469) PMID: [25301627](https://pubmed.ncbi.nlm.nih.gov/25301627/)