



Original Article

# Dissecting the Contributing Role of Divergent Adipose Tissue to Multidimensional Frailty in Cirrhosis

Lihong Mao<sup>1,2#</sup>, Chaoqun Li<sup>1,3#</sup>, Xiaoyu Wang<sup>1,2</sup>, Mingyu Sun<sup>1,2</sup>, Yifan Li<sup>1,2</sup>, Zihan Yu<sup>1,2</sup>, Binxin Cui<sup>4</sup>, Gaoyue Guo<sup>1,2</sup>, Wanting Yang<sup>1,2</sup>, Yangyang Hui<sup>1,2</sup>, Xiaofei Fan<sup>1,2</sup>, Jie Zhang<sup>1,2</sup>, Kui Jiang<sup>1,2\*</sup> and Chao Sun<sup>1,2,4\*</sup> 

<sup>1</sup>Department of Gastroenterology and Hepatology, Tianjin Medical University General Hospital, Tianjin, China; <sup>2</sup>Tianjin Institute of Digestive Disease, Tianjin Medical University General Hospital, Tianjin, China; <sup>3</sup>Department of Internal Medicine, Tianjin Hexi Hospital, Tianjin, China; <sup>4</sup>Department of Gastroenterology, Tianjin Medical University General Hospital Airport Hospital, Tianjin, China

Received: 16 January 2022 | Revised: 1 March 2022 | Accepted: 5 April 2022 | Published: 20 April 2022

## Abstract

**Background and Aims:** Emerging evidence has demonstrated that abnormal body composition may potentiate the development of frailty, whereas little work focuses on the role of divergent adipose tissue. Therefore, we aimed to determine the potential contribution of adipose tissue distribution to multidimensional frailty in decompensated cirrhosis. **Methods:** We conducted a retrospective cohort study. Divergent adipose tissues were assessed by computed tomography-derived subcutaneous adipose tissue index (SATI), visceral adipose tissue index (VATI) and total adipose tissue index (TATI), respectively. Frailty was identified by our validated self-reported Frailty Index. Multiple binary logistic models incorporating different covariates were established to assess the relationship between adipose tissue distribution and frailty. **Results:** The study cohort comprised 245 cirrhotic patients with 45.3% being male. The median Frailty Index, body mass index (BMI) and model for end-stage liver disease (MELD) score were 0.11, 24.3 kg/m<sup>2</sup> and 8.9 points, respectively. In both men and women, patients who were frail exhibited lower levels of SATI in comparison with nonfrail patients. SATI inversely correlated with Frailty Index in the entire cohort ( $r_s = -0.1361$ ,  $p = 0.0332$ ). Furthermore, SATI or TATI was independently associated with frail phenotype in several multiple logistic regression models adjusting for age, BMI, presence of ascites, sodium, Child-Pugh class or MELD score in isolation. **Conclusions:** In the context of decompensated cirrhosis, low SATI and concomitant TATI were associated with higher risk of being frail. These findings highlight the importance

to further apply tissue-specific tools of body composition in place of crude metric like BMI.

**Citation of this article:** Mao L, Li C, Wang X, Sun M, Li Y, Yu Z, et al. Dissecting the Contributing Role of Divergent Adipose Tissue to Multidimensional Frailty in Cirrhosis. J Clin Transl Hepatol 2023;11(1):58–66. doi: 10.14218/JCTH.2022.00027.

## Introduction

In the field of hepatology or liver transplantation, the conceptual frame of frailty mainly concentrates on physical frailty because it is measured in ambulatory and transplant settings.<sup>1</sup> For instance, Lai and colleagues developed a feasible and reliable liver frailty index metric based on performance, including handgrip strength, chair stands, and balance, and successfully linked it to various adverse outcomes.<sup>2–4</sup> However, a major limitation of these performance-based metrics is the need of active patient participation during the testing process, which is not applicable in acutely ill and severely decompensated cirrhotics who are hospitalized.<sup>5</sup> As a matter of fact, the original definition of frailty in the geriatrics indicates a distinct syndrome pertaining to decreased physiological reserve and increased vulnerability to health stressors.<sup>6</sup> Multidimensional frailty arises from multiple derangements of one or combined physiological systems including endocrine, musculoskeletal, neurological, cardiovascular, and immune systems. Recently, our research team has revised and obtained an Frailty Index that includes global frail components and we validated the clinical utility of this self-reported scale for prognostication in the context of cirrhosis.<sup>7,8</sup> Despite a consistent relationship between both physical and multidimensional frailty and adverse outcomes across populations, gaps remain in identifying risk factors for the development of frailty in advanced chronic liver diseases. It is pivotal to identify risk factors for frailty with the purpose of delineating its pathobiology as well as introducing novel preventive and therapeutic targets.

Unlike sarcopenia, the clinical relevance of adipose tissue has not been well recognized in patients with cirrhosis. Rodrigues *et al.* found that adipopenia, or a low total adipose tissue index (TATI), was associated with decompensation

**Keywords:** Frailty; Adipose tissue; Liver cirrhosis; Subcutaneous adipose tissue index.

**Abbreviations:** AILD, auto-immune liver disease; BMI, body mass index; CI, confidence interval; CT, computed tomography; HU, Hounsfield unit; INR, international normalized ratio; IQR, interquartile range; L3, third lumbar vertebra; MELD, model for end-stage liver disease; NAFLD, nonalcoholic fatty liver disease; OR, odds ratio; SATI, subcutaneous adipose tissue index; SMI, skeletal muscle index; TATI, total adipose tissue index; VATI, visceral adipose tissue index; VSR, visceral to subcutaneous adipose tissue area ratio.

#Contributed equally to this work.

\*Correspondence to: Kui Jiang and Chao Sun, Department of Gastroenterology and Hepatology, Tianjin Medical University General Hospital, Anshan Road 154, Heping District, Tianjin 300052, China. ORCID: <https://orcid.org/0000-0002-0380-7999> (CS). Tel: +86-22-60362608, Fax: +86-22-27813550, E-mail: [kjiang@tmu.edu.cn](mailto:kjiang@tmu.edu.cn) (KJ) and [chaosun@tmu.edu.cn](mailto:chaosun@tmu.edu.cn) (CS)

in patients with cirrhosis.<sup>9</sup> Furthermore, low subcutaneous adipose tissue index (SATI) was shown to be independently associated with increased mortality in female cirrhotic patients,<sup>10</sup> but no relationship was observed between visceral adipose tissue index (VATI) and waitlist mortality in subjects evaluated for liver transplantation.<sup>11</sup> Notably, subcutaneous and visceral adipose tissue, two divergent types of adipose tissue, vary remarkably in anatomical location, adipocyte size, lipolytic ability, insulin sensitivity, and adipokine secretion.<sup>12</sup> Intriguingly, Anderson *et al.* found a nonlinear relationship between VAT and frailty in adult lung transplant candidates.<sup>13</sup> On the other hand, computed tomography (CT)-based SAT at the third lumbar vertebra (L3) and body mass index (BMI) were significantly lower in frail men compared with prefrailty in elderly pelvic trauma patients.<sup>14</sup> However, the association between adipose tissue distribution and frailty in patients with cirrhosis is unclear. Taken together, we sought to determine the relationship between multidimensional frailty and a diverse panel of measures of body composition, including BMI, waist circumference, skeletal muscle index (SMI), SATI, VATI, TATI, and visceral to subcutaneous adipose tissue area ratio (VSR) in patients with decompensated cirrhosis.

## Methods

### Study cohort

This retrospective cohort study was approved by the ethics committee of Tianjin Medical University General Hospital (TJMUGH, IRB2021-YX-136-01) and conducted following the ethical guidelines of the Declaration of Helsinki. We consecutively recruited adult patients diagnosed with cirrhosis by their medical records, biochemical data, radiological findings, or histological results in our department between 2017 and 2021. The following exclusion criteria were adopted: (1) primary hepatocellular carcinoma or extrahepatic malignancies; (2) acute-on-chronic liver failure during hospitalization; (3) severe hepatic encephalopathy precluding finishing Frailty Index questionnaire; (4) liver transplantation, and (5) denial of regular follow-up. A total of 245 patients with decompensated cirrhosis was included in the analysis (Fig. S1). The baseline patient characteristics such as demographics (age, sex), Child-Pugh class, model for end-stage liver disease (MELD) score, laboratory parameters, etiology, anthropometry (weight and height) were retrieved from our hospital's electronic database. BMI values were estimated on the basis of dry weight as has been previously described, taking into consideration the fluid retention that occurs in a large percentage of cirrhotics.<sup>15,16</sup>

### CT evaluation of body composition

We collected imaging biomarkers of body composition including SMI and several adipose tissues (subcutaneous SAT and visceral VAT). The parameters were measured by analyzing CT images at the L3 level using a noncommercial software based on Matlab version R2010a (Mathworks Inc., Natick, MA, USA). The cross-sectional area of SAT/VAT and skeletal muscles was reported as square meters (m<sup>2</sup>). Tissue-specific Hounsfield unit (HU) thresholds were applied to discriminate divergent tissue types. The CT thresholds were -190 to -30 for SAT, -150 to -50 for VAT and -29 to 150 HU for quantifying skeletal muscles.<sup>9,17,18</sup> All values were normalized to height in m<sup>2</sup> and used to calculate indexes such as SMI, SATI, VATI and TATI (cm<sup>2</sup>/m<sup>2</sup>). Visceral adi-

posity was assessed by VSR. All abdominal CT scans were performed within 3 months prior to hospitalization.

### Frailty Index evaluation

We have previously described the use of our Frailty Index.<sup>7</sup> In brief, this self-reported scale derives from the Carolina Frailty Index with minor modification. The Frailty Index comprises 36 variables including unintentional weight loss, exhaustion, instrumental activities of daily living, physical function, and social activities, etc. A valid questionnaire contained at least 10 fulfilled issues. For instance, a patient would have a score of 0.33 after getting 12 points in the case of finishing all 36 issues (12/36). We regarded patients with an Frailty Index of >0.38 as frail phenotype. All Frailty Index questionnaires were collected within 48 h of the first admission to our department.

### Statistical analysis

Continuous variables were reported as medians and interquartile range (IQR) and compared by the Mann-Whitney *U* test. For categorical variables, descriptive data were reported as frequency or proportion (%) and compared by  $\chi^2$  or Fisher's exact test. Correlations between body composition biomarkers and the Frailty Index were determined by the Spearman's rank correlation coefficient ( $r_s$ ). Multivariate logistic regression analysis was used to estimate the odds ratio (OR) and 95% confidence interval (CI) for each measure of body composition with distinct levels of frailty as the outcome (that is, frailty and nonfrailty). The covariates that we used in the multivariate analysis were chosen on the basis of statistically significant univariate association with frail status and previously established scientific knowledge. We examined all body composition metrics as continuums without dichotomization to better understand the association with frailty. To avoid overfitting and maximize statistical power, we made four multiple regression models incorporating Child-Pugh class or MELD score. A *p*-value < 0.05 was considered statistically significant. The statistical analysis was performed with SPSS 23.0 (IBM Corp., Armonk, New York, NY, USA) or Graphpad Prism 8.0.1 (La Jolla, CA, USA).

## Results

Of the 245 patients with cirrhosis included in the study, 111 were men with an average age of 63 (IQR: 57, 69) years (Table 1). In the entire cohort, the median Frailty Index, BMI, and MELD score were 0.11 (IQR: 0.06, 0.24), 24.3 (IQR: 21.3, 27.3) kg/m<sup>2</sup> and 8.9 (IQR: 6.5, 11.7) points, respectively. Frail patients had lower levels of BMI and albumin, higher levels of total bilirubin and creatinine, and greater proportions of Child-Pugh class B and C and ascites. Regarding body composition, SATI, and TATI were lower in patients with cirrhosis and frailty, and no significant differences in VSR or VATI were observed.

Taking into consideration sex-differences in the distribution of divergent adipose tissue, women store higher levels of SATI and VATI is higher in men in the context of cirrhosis.<sup>10</sup> These characteristics are shown separately for men and women in Fig. 1. Intriguingly, frail men had lower levels of SATI (33.87 vs. 38.13 cm<sup>2</sup>/m<sup>2</sup>, *p*=0.0585) and lower TATI (81.28 vs. 96.19 cm<sup>2</sup>/m<sup>2</sup>, *p*=0.0538) that were of borderline statistical significance. In women, lower levels of SATI (35.14 vs. 59.74 cm<sup>2</sup>/m<sup>2</sup>, *p*=0.0329) and a trend favoring lower TATI (69.65 vs. 110.00 cm<sup>2</sup>/m<sup>2</sup>, *p*=0.0771) were observed in frail compared with nonfrail individuals.

Table 1. Baseline characteristics of the entire cohort, categorized by sex and multidimensional frail phenotype

Characteristic	All (n=245)			Men (n=111)			Women (n=134)		
	Frailty (n=27)	Nonfrailty (n=218)	P	Frailty (n=14)	Nonfrailty (n=97)	P	Frailty (n=13)	Nonfrailty (n=121)	P
Age, year	65 [57,74]	63 [57,68]	0.0708	65 [57,68]	59 [50,67]	0.1541	71 [55,76]	65 [58,69]	0.0804
Height, m	1.65 [1.60,1.70]	1.65 [1.60,1.70]	0.2731	1.70 [1.66,1.73]	1.71 [1.65,1.76]	0.5061	1.64 [1.60,1.65]	1.60 [1.57,1.65]	0.0686
Weight, kg	65 [57,75]	67 [58,75]	0.0437	67 [55,80]	72 [65,82]	0.1954	58 [48,61]	64 [53,70]	0.0590
BMI, kg/m <sup>2</sup>	24.3 [21.3,27.3]	24.6 [21.5,27.3]	0.0098	23.7 [19.0,27.4]	24.6 [22.5,27.8]	0.3559	21.3 [18.2,23.4]	24.4 [20.6,27.3]	0.0065
Waist circumference, cm	96.1 [86.8,104.5]	96.1 [86.0,104.3]	0.2843	98.4 [91.8,109.8]	98.3 [89.6,107.4]	0.7167	95.1 [88.1,108.1]	93.7 [83.2,100.3]	0.3354
VSR	0.92 [0.68,1.28]	0.91 [0.67,1.28]	0.1586	1.20 [1.07,1.87]	1.13 [0.78,1.70]	0.4153	0.87 [0.69,1.14]	0.78 [0.59,1.00]	0.4206
SMI, cm <sup>2</sup> /m <sup>2</sup>	45.88 [39.03,52.09]	45.93 [38.05,52.30]	0.5617	45.72 [40.26,52.72]	49.73 [42.63,55.52]	0.2720	43.58 [36.09,48.56]	42.15 [36.78,48.71]	0.9817
SATI, cm <sup>2</sup> /m <sup>2</sup>	44.86 [31.79,72.52]	48.69 [32.49,74.27]	0.0027	33.87 [15.57,38.54]	38.13 [27.46,55.01]	0.0585	35.14 [28.49,66.85]	59.74 [37.41,82.18]	0.0329
VATI, cm <sup>2</sup> /m <sup>2</sup>	45.67 [29.75,67.04]	47.45 [30.14,68.97]	0.1494	43.41 [30.29,51.66]	49.84 [32.06,73.10]	0.2417	35.17 [25.05,64.48]	45.25 [29.75,64.63]	0.3626
TATI, cm <sup>2</sup> /m <sup>2</sup>	97.79 [66.22,134.10]	102.00 [67.78,135.40]	0.0107	81.28 [42.01,87.06]	96.19 [62.72,125.80]	0.0538	69.65 [56.42,125.10]	110.00 [69.99,140.40]	0.0771
Frailty Index	0.11 [0.06,0.24]	0.09 [0.06,0.17]	<0.0001	0.49 [0.41,0.51]	0.08 [0.06,0.17]	<0.0001	0.50 [0.44,0.58]	0.10 [0.05,0.18]	<0.0001
MELD score	8.9 [6.5,11.7]	8.6 [6.2,11.2]	0.0012	11.7 [8.4,13.2]	8.4 [5.1,10.6]	0.0387	11.7 [10.0,13.7]	8.7 [6.9,11.4]	0.0079
INR	1.28 [1.16,1.45]	1.27 [1.15,1.44]	0.0711	1.39 [1.26,1.50]	1.34 [1.20,1.59]	0.7076	1.30 [1.25,1.45]	1.22 [1.12,1.38]	0.0598
Albumin, g/L	28 [25,32]	28 [25,32]	0.0016	25 [22,28]	28 [25,33]	0.0090	25 [20,31]	29 [25,32]	0.0554
Total bilirubin, μmol/L	21.5 [14.3,37.5]	19.8 [13.9,35.9]	0.0056	33.2 [21.5,55.9]	19.9 [13.3,37.9]	0.0284	31.4 [22.1,53.6]	19.8 [14.2,34.3]	0.0197
Creatinine, μmol/L	58 [47,70]	57 [46,69]	0.0178	64 [60,86]	64 [56,75]	0.6653	61 [49,79]	50 [42,59]	0.0267
Sodium, mmol/L	141 [138,142]	141 [138,142]	0.0751	140 [135,142]	141 [138,142]	0.4383	139 [136,141]	141 [139,142]	0.0885
Child-Pugh class (%)			0.0013			0.0495			0.0021
A	74 (30.2)	72 (33.0)		0 (0.0)	30 (30.9)		2 (15.4)	42 (34.7)	
B	131 (53.5)	116 (53.2)		10 (71.4)	50 (51.5)		5 (38.5)	66 (54.5)	
C	40 (16.3)	30 (13.8)		4 (28.6)	17 (17.5)		6 (46.2)	13 (10.7)	

(continued)

Table 1. (continued)

Characteristic	All (n=245)			Men (n=111)			Women (n=134)		
	All (n=245)	Frailty (n=27)	Nonfrailty (n=218)	Frailty (n=14)	Nonfrailty (n=97)	p	Frailty (n=13)	Nonfrailty (n=121)	p
Etiology (%)			0.5673			0.7272			0.3686
HBV/HCV	67 (27.3)	4 (14.8)	63 (28.9)	3 (21.4)	26 (26.8)		1 (7.7)	37 (30.6)	
Alcohol	62 (25.3)	7 (25.9)	55 (25.2)	7 (50.0)	53 (54.6)		0 (0.0)	2 (1.7)	
AILD	66 (26.9)	9 (33.3)	57 (26.1)	2 (14.3)	15 (15.5)		7 (53.8)	42 (34.7)	
Biliary	31 (12.7)	2 (7.4)	29 (13.3)	0 (0.0)	2 (2.1)		2 (15.4)	27 (22.3)	
NAFLD/Cryptogenic	49 (20.0)	6 (22.2)	43 (19.7)	2 (14.3)	16 (16.5)		4 (30.8)	27 (22.3)	
Ascites (%)			<0.0001			0.0078			0.0062
Yes	140 (57.1)	25 (92.6)	115 (52.8)	13 (92.9)	54 (55.7)		12 (92.3)	61 (50.4)	
No	105 (42.9)	2 (7.4)	103 (47.2)	1 (7.1)	43 (44.3)		1 (7.7)	60 (49.6)	

Data are medians (interquartile range) or frequency and proportion (%). p-values were derived from the Mann-Whitney U test or Fisher's exact test. AILD, autoimmune liver disease; BMI, body mass index; INR, international normalized ratio; MELD, model for end-stage liver disease; NAFLD, nonalcoholic fatty liver disease; SATI, subcutaneous adipose tissue index; TATI, total adipose tissue index; VATI, visceral adipose tissue index; VSR, visceral to subcutaneous adipose tissue area ratio.

**Correlation between biomarkers of adipose tissue and Frailty Index**

In the entire cohort, Frailty Index positively correlated with VSR ( $r_s=0.1710, p=0.0073$ ) and negatively with SATI ( $r_s=-0.1361, p=0.0332$ ). When stratified by sex, a correlation was also found regarding VSR both in men ( $r_s=0.1896, p=0.0463$ ) and women ( $r_s=0.1777, p=0.0400$ ). No significant correlations were observed between Frailty Index and VATI/TATI across the study cohort (Fig. 2).

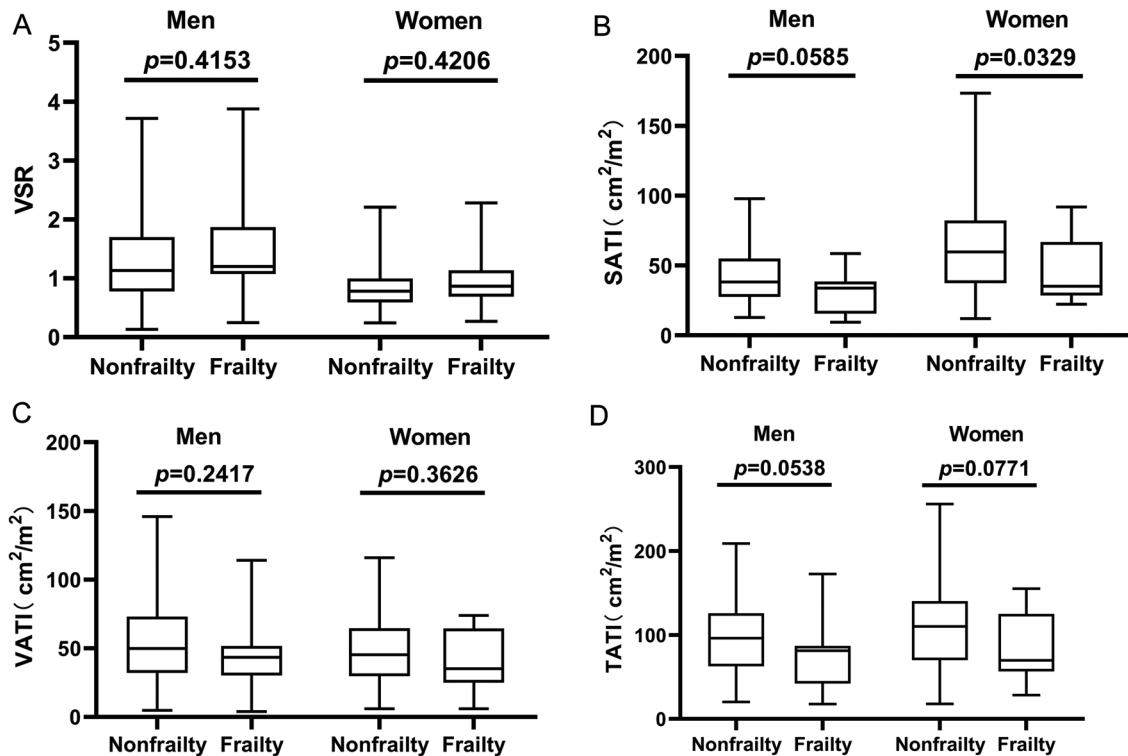
**Association between frailty and various measures of body composition**

Univariate logistic regression demonstrated that age, BMI, SATI, TATI, albumin, sodium, MELD score, Child-Pugh class, and the presence of ascites were risk factors in relation to frailty (Table 2). To avoid redundancy and to maximize statistical power, we planned to establish four multiple logistic models incorporating MELD score or Child-Pugh class in isolation with distinct panels of measures pertaining to adipose tissue distribution. In model 1, adjusting for BMI and sodium, age (OR=1.059, 95% CI: 1.008–1.113;  $p=0.024$ ), SATI (OR=0.972, 95% CI: 0.950–0.994;  $p=0.013$ ), MELD score (OR=1.018, 95% CI: 1.014–1.211;  $p=0.023$ ), and presence of ascites (OR=6.077, 95% CI: 1.340–27.560;  $p=0.019$ ) were independent risk factors of frailty. In model 2, accounting for BMI and sodium, age (OR=1.066, 95% CI: 1.017–1.118;  $p=0.008$ ), TATI (OR=0.987, 95% CI: 0.976–0.998;  $p=0.019$ ) and Child-Pugh class C (OR=10.773, 95% CI: 2.149–53.997;  $p=0.004$ ) were independent risk factors of frailty. In model 3, adjusting for BMI and sodium, age (OR=1.065, 95% CI: 1.016–1.117;  $p=0.009$ ), SATI (OR=0.972, 95% CI: 0.952–0.993;  $p=0.008$ ), and Child-Pugh class C (OR=10.747, 95% CI: 2.132–54.182;  $p=0.004$ ) were independent risk factors of frailty. In model 4, accounting for BMI and sodium, age (OR=1.059, 95% CI: 1.008–1.113;  $p=0.023$ ), TATI (OR=0.986, 95% CI: 0.975–0.997;  $p=0.016$ ), MELD score (OR=1.106, 95% CI: 1.012–1.209;  $p=0.027$ ), and presence of ascites (OR=6.525, 95% CI: 1.451–29.343;  $p=0.014$ ) were independent risk factors of frailty.

**Discussion**

In this study of patients with decompensated cirrhosis, we found a strong relationship between SAT and frailty. Whilst the biomedical literature has mainly concentrated on the association between sarcopenia and frailty, our findings are in line with a smaller body of work reporting an association between abnormal adipose tissue distribution and frailty in a variety of pathological entities.<sup>13,14,19</sup> Of note, patients with either low SATI or concomitant TATI in particular are at increased risk of frailty after controlling for age, conventional predictive scores (Child-Pugh class/MELD score), BMI, and presence of ascites. Although the reasons for negative impact of low SATI are not well known, investigating the mechanisms driving this relationship may help develop strategies to prevent and even treat frailty.

Given the emerging role and clinical relevance of adipose tissue in frailty, the research focus has been identified across different populations. For instance, Hawkins *et al*. showed that older men with or without HIV infection, with higher VAT, higher waist circumference, sarcopenia, and osteoporosis were more likely to be frail.<sup>19</sup> Another study conducted in a cohort of adult lung transplant candidates revealed that both patients with extremely low or high VAT were at increased risk of frailty after adjusting for age, sex,



**Fig. 1. Comparison of the VSR (A), SATI (B), VATI (C) and TATI (D) by frailty and sex.** SATI, subcutaneous adipose tissue index; TATI, total adipose tissue index; VATI, visceral adipose tissue index; VSR, visceral to subcutaneous adipose tissue area ratio.

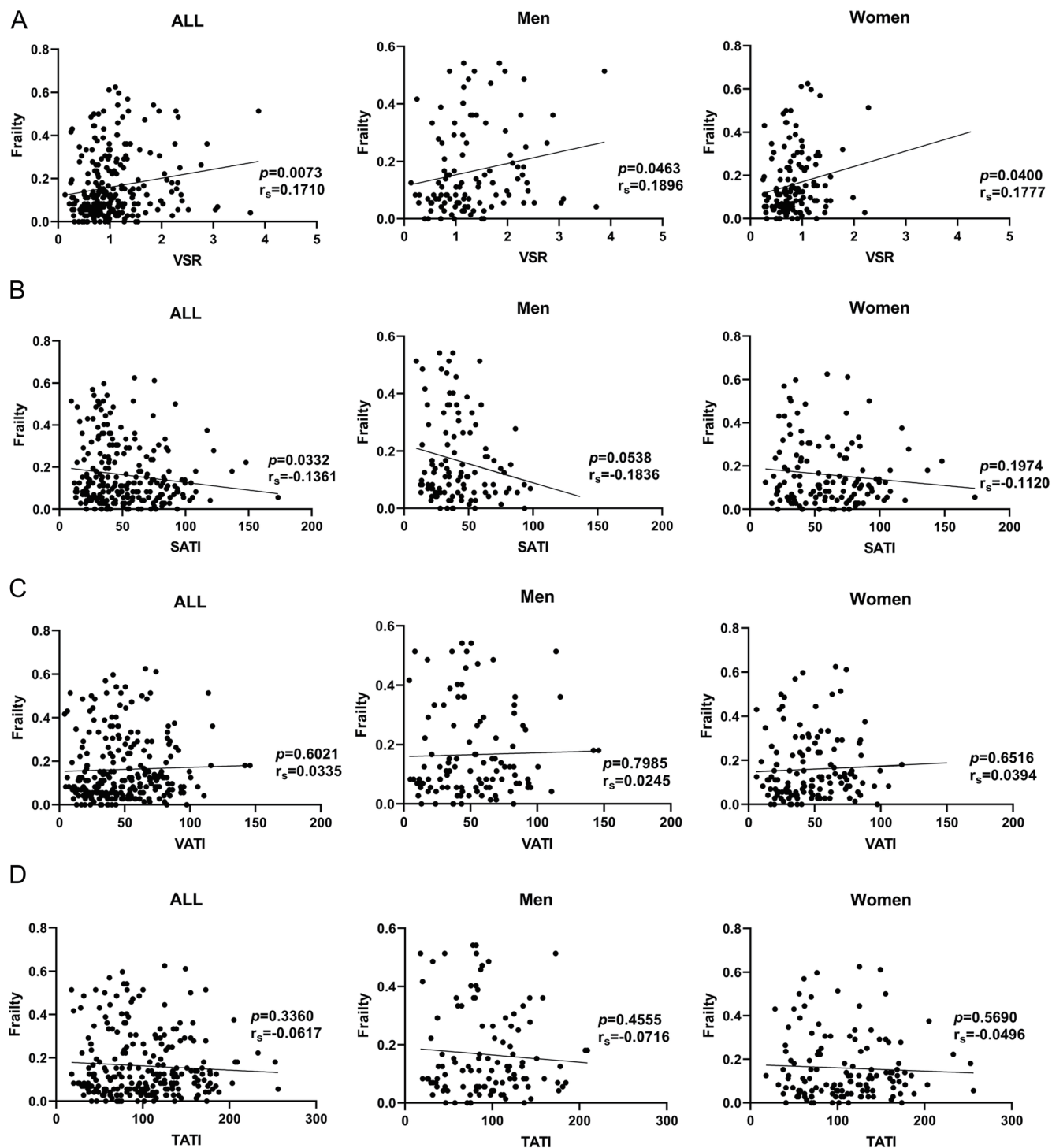
forced vital capacity, BMI, and skeletal muscle mass.<sup>13</sup> Furthermore, Laur and colleagues used CT-derived abdominal body composition at the L3 level to determine their association with a diagnosis of frailty in their institution's pelvic trauma registry.<sup>14</sup> They found that SAT was significantly lower in the frail men compared with prefrail men, which is consistent with our findings.

We and others corroborate that frailty is independent of traditional scoring systems and cirrhosis-associated complications like ascites and hepatic encephalopathy in the prediction of mortality.<sup>7,20</sup> More recently, Wang *et al.* found that frailty serves as an independent predictor of disease progression among patients with compensated and decompensated cirrhosis, all of which implicates that frailty may occur at an earlier stage of cirrhosis.<sup>5</sup> On the other hand, Rodrigues and colleagues addressed that lower TATI (adipopenia) is associated with 12-month decompensation; fat loss may precede sarcopenia development.<sup>9</sup> In addition, the severity of portal hypertension (indicative of hepatic venous pressure gradient) showed significantly inverse correlation with SATI ( $r=-0.282$ ,  $p=0.01$ ) and TATI ( $r=-0.220$ ,  $p=0.045$ ) but not VATI or SMI. Contextually, our study now adds a small but accumulating body of literature that SAT depletion may instigate the progression of frail phenotype prior to evident muscle depletion in early-decompensated cirrhosis (median MELD score of 8.9 points in our cohort).

Our finding of no relationship between VATI and frailty was unexpected. Actually, VAT is primarily involved in obesity-associated metabolic disturbance.<sup>21</sup> Free fatty acids and adipokines released from VAT are delivered directly to the liver via portal vein, where they lead to inflammation and abnormal lipids deposition.<sup>12,22</sup> As a consequence, high amount of VAT can exacerbate an existing dysregulated metabolic state in patients with cirrhosis, and thus foster frailty. However, in most patients, SAT represents the meta-

bolically more favorable adipose compartment and is the most abundant of total fat tissue.<sup>23</sup> It has been suggested that failure to expand SAT is a major factor potentiating visceral fat accumulation and insulin resistance.<sup>24,25</sup> Moreover, preclinical data suggests that removing subcutaneous fat gives rise to visceral fat accumulation, insulin resistance, and expression of TNF- $\alpha$ .<sup>26</sup> Taken together, further dedicated studies in this field are warranted to validate our findings, that is, low SATI acts as a sign of abnormal adipose tissue distribution.

Our current understanding of the development of frailty is in its infancy and under extensive investigation. As the relationship between low SATI/TATI and frailty appears to be a novel finding in the context of cirrhosis, we are obligated to address several potential mechanisms. First, SAT serves to provide energy in a catabolic state and is responsible for uptake and storage of triglycerides and free fatty acids.<sup>27</sup> Low SATI and concomitant TATI may reflect a state of protein-energy malnutrition and the absence of energy reserves, while malnutrition and frailty have proved to be inter-related in cirrhosis.<sup>28</sup> Second, SAT can result in production of adipokines that regulate lipid metabolism and immune responses.<sup>29</sup> Both adipose tissue dysfunction and chronic systemic inflammation are pathobiological factors described in the frailty literature.<sup>30</sup> Third, Gioia *et al.* found that SAT contributed to handle and reduce ammonia levels, raising its role for ammonia and conversion of glutamate to glutamine by glutamine synthase.<sup>31</sup> Hyperammonemia results in decreased protein synthesis and increased autophagic proteolysis, and consequent sarcopenia is associated with the development of frailty.<sup>32,33</sup> Fourth, the adipose tissue depot is a major organ with microRNA (miRNA), and adipose miRNA profiles corresponding to body composition and functional status and predict adverse clinical outcomes. Chan *et al.* demonstrated that miRNA-130b



**Fig. 2. Correlation between the Frailty Index, VSR (A), SATI (B), VATI (C) and TATI (D) in the entire cohort and subsettings by sex.**  $r_s$ , Spearman's rank correlation coefficient; SATI, subcutaneous adipose tissue index; TATI, total adipose tissue index; VATI, visceral adipose tissue index; VSR, visceral to subcutaneous adipose tissue area ratio.

expression in adipose tissue decreased from nonfrail to severe frailty (1.01-fold vs. 0.32-fold,  $p=0.031$ ) and predicted frailty independent of age and serum albumin level in patients with advanced chronic kidney disease.<sup>34</sup> It is tempting to conduct in-depth investigations of miRNA perturba-

tion, adipose tissue distribution, and frail phenotype in the context of cirrhosis.

There are several study limitations that should be acknowledged. The first is the study's observational nature, which does not allow determining whether abnormal adi-

Table 2. Univariate and multivariate logistic regression of frailty in patients with cirrhosis

Variable	Univariate analysis			Multivariate analysis							
	OR (95%CI)	p		Model 1 #		Model 2 #		Model 3 #		Model 4 #	
	OR (95%CI)	p		OR (95% CI)	p	OR (95% CI)	p	OR (95% CI)	p	OR (95% CI)	p
Sex	1.343 [0.630,2.992]	0.470									
Age, years	1.056 [1.008,1.107]	0.022	1.059 [1.008,1.113]	0.024	1.066 [1.017,1.118]	0.008	1.065 [1.016,1.117]	0.009	1.059 [1.008,1.113]	0.023	0.023
BMI, kg/m <sup>2</sup>	0.879 [0.793,0.973]	0.013									
VSR	1.520 [0.856,2.696]	0.153									
SMI, cm <sup>2</sup> /m <sup>2</sup>	0.991 [0.955,1.029]	0.649									
SATI, cm <sup>2</sup> /m <sup>2</sup>	0.971 [0.952,0.991]	0.005	0.972 [0.950,0.994]	0.013			0.972 [0.952,0.993]	0.008			0.008
VATI, cm <sup>2</sup> /m <sup>2</sup>	0.987 [0.971,1.004]	0.134									
TATI, cm <sup>2</sup> /m <sup>2</sup>	0.987 [0.977,0.997]	0.012				0.987 [0.976,0.998]	0.019		0.986 [0.975,0.997]	0.016	0.016
INR	1.913 [0.477,7.672]	0.360									
Albumin, g/L	0.857 [0.783,0.937]	0.001									
Total bilirubin, μmol/L	1.004 [0.999,1.009]	0.095									
Creatinine, μmol/L	1.007 [0.995,1.019]	0.278									
Sodium, mmol/L	0.886 [0.808,0.971]	0.010									
MELD score	1.102 [1.020,1.189]	0.014	1.018 [1.014,1.211]	0.023					1.106 [1.012,1.209]	0.027	0.027
Child-Pugh Class											
A	Ref	Ref	Ref	Ref	Ref	Ref	Ref	Ref	Ref	Ref	Ref
B	4.655 [1.034,20.956]	0.045	3.594 [0.780,16.563]	0.101	3.581 [0.776,16.532]	0.102					
C	12.000 [2.480,58.073]	0.002	10.773 [2.149,53.997]	0.004	10.747 [2.132,54.182]	0.004					
Ascites	11.196 [2.588,48.431]	0.001	6.077 [1.340,27.560]	0.019					6.525 [1.451,29.343]	0.014	0.014

#Model 1 adjusted for: Age, BMI, SATI, MELD score, ascites, and sodium. #Model 2 adjusted for: Age, BMI, TATI, Child-Pugh class, and sodium. #Model 3 adjusted for: Age, BMI, SATI, MELD score, ascites, and sodium. #Model 4 adjusted for: Age, BMI, TATI, MELD score, ascites, and sodium. BMI, body mass index; INR, international normalized ratio; MELD, model for end-stage liver disease; SATI, subcutaneous adipose tissue index; SMI, skeletal muscle index; TATI, total adipose tissue index; VATI, visceral adipose tissue index; VSR, visceral to subcutaneous adipose tissue area ratio.

pose tissue distribution acts as a cause, a predisposing factor, or a consequence of frailty. Second, the investigation of the Frailty Index was based on single-center data, and is without external validation. It is possible that the relationship between low SATI and frail phenotype may differ from other metrics to evaluate frailty. However, our results are pivotal for instigating additional multicenter studies linking abnormal adipose tissue distribution to the development of frailty. Third, we arbitrarily dichotomized the study population into frailty and nonfrailty in terms of an established cutoff and performed binary logistic regression to identify independent risk factors. While an option determined by clinical availability rather than a limitation, this can partly explain why SMI values as a continuum lost its predictive value for frailty in contrast to sarcopenia. Fourth, ordinary stepwise regression with the purpose of noncausal prediction may incur overstated significance and relatively narrow confidence intervals. Other approaches, such as change-in-estimate strategies with selection of covariates by how much their control changes estimates of exposure effect can be considered.<sup>35</sup> Last, we did not examine nutritional, inflammatory, and metabolic indicators such as leptin, triglycerides, or cholesterol, which are intuitively relevant to abnormal adipose tissue deposition.

In summary, this study is the first to describe a complex and nuanced relationship between divergent adipose tissue and frailty in the context of decompensated cirrhosis, and to suggest that low SATI and concomitant TATI are associated with an increased risk of frailty. The findings highlight the importance of tissue-specific body composition in place of crude metrics like BMI. The novel association between SAT and frailty may assist in delineating the pathobiology of frailty and introducing preventive as well as therapeutic avenue.

## Funding

KJ is supported by the Science and Technology Program of Tianjin (Grant 19ZXDBSY00020).

## Conflict of interest

CS has been an editorial board member of *Journal of Clinical and Translational Hepatology* since 2020. The other authors have no conflict of interests related to this publication.

## Author contributions

Involved in the conception or design of the work (LM, CL, XW, CS), literature screen and review (MS, YL, ZY), data acquisition and statistical analysis (BC), analysis and interpretation of data (GG, WY, YH, XF), drafted the article (CS). All authors critically revised the article and approved the version to be published.

## Data sharing statement

No additional data are available.

## References

[1] Lai JC, Sonnenday CJ, Tapper EB, Duarte-Rojo A, Dunn MA, Bernal W, *et al*. Frailty in liver transplantation: An expert opinion statement from the American Society of Transplantation Liver and Intestinal Community of Practice. *Am J Transplant* 2019;19(7):1896–1906. doi:10.1111/ajt.15392,

PMID:30980701.

[2] Lai JC, Covinsky KE, Dodge JL, Boscardin WJ, Segev DL, Roberts JP, *et al*. Development of a novel frailty index to predict mortality in patients with end-stage liver disease. *Hepatology* 2017;66(2):564–574. doi:10.1002/hep.29219, PMID:28422306.

[3] Serper M, Tao SY, Kent DS, Garren P, Burdzy AE, Lai JC, *et al*. Inpatient Frailty Assessment Is Feasible and Predicts Nonhome Discharge and Mortality in Decompensated Cirrhosis. *Liver Transpl* 2021;27(12):1711–1722. doi:10.1002/lt.26100, PMID:34018303.

[4] Wang S, Whitlock R, Xu C, Taneja S, Singh S, Abinales JG, *et al*. Frailty is associated with increased risk of cirrhosis disease progression and death. *Hepatology* 2022;75(3):600–609. doi:10.1002/hep.32157, PMID:34528267.

[5] Tandon P, Montano-Loza AJ, Lai JC, Dasarathy S, Merli M. Sarcopenia and frailty in decompensated cirrhosis. *J Hepatol* 2021;75(Suppl 1):S147–S162. doi:10.1016/j.jhep.2021.01.025, PMID:34039486.

[6] Fried LP, Tangen CM, Walston J, Newman AB, Hirsch C, Gottdiener J, *et al*. Frailty in older adults: evidence for a phenotype. *J Gerontol A Biol Sci Med Sci* 2001;56(3):M146–M156. doi:10.1093/gerona/56.3.m146, PMID:11253156.

[7] Deng Y, Lin L, Hou L, Fan X, Zhao T, Mao L, *et al*. A self-reported Frailty Index predicts long-term mortality in hospitalized patients with cirrhosis. *Ann Transl Med* 2020;8(19):1217. doi:10.21037/atm-20-943, PMID:33178749.

[8] Hui Y, Xu L, Wang X, Feng H, Yu Z, Li C, *et al*. Association between sleep disturbance and multidimensional frailty assessed by Frailty Index in hospitalized cirrhosis. *Eur J Gastroenterol Hepatol* 2021;33(Suppl S1):e727–e733. doi:10.1097/MEG.0000000000002231, PMID:34101682.

[9] Rodrigues SG, Brabant B, Stirnimann G, Maurer MH, Berzigotti A. Adiposity correlates with higher portal pressure in patients with cirrhosis. *Liver Int* 2019;39(9):1672–1681. doi:10.1111/liv.14175, PMID:31207018.

[10] Ebadi M, Tandon P, Moctezuma-Velazquez C, Ghosh S, Baracos VE, Mazurak VC, *et al*. Low subcutaneous adiposity associates with higher mortality in female patients with cirrhosis. *J Hepatol* 2018;69(3):608–616. doi:10.1016/j.jhep.2018.04.015, PMID:29709682.

[11] Montano-Loza AJ, Mazurak VC, Ebadi M, Meza-Junco J, Sawyer MB, Baracos VE, *et al*. Visceral adiposity increases risk for hepatocellular carcinoma in male patients with cirrhosis and recurrence after liver transplant. *Hepatology* 2018;67(3):914–923. doi:10.1002/hep.29578, PMID:29023899.

[12] Fain JN, Madan AK, Hiler ML, Cheema P, Bahouth SW. Comparison of the release of adipokines by adipose tissue, adipose tissue matrix, and adipocytes from visceral and subcutaneous abdominal adipose tissues of obese humans. *Endocrinology* 2004;145(5):2273–2282. doi:10.1210/en.2003-1336, PMID:14726444.

[13] Anderson MR, Kolaitis NA, Gao Y, Kukreja J, Greenland J, Hays S, *et al*. A nonlinear relationship between visceral adipose tissue and frailty in adult lung transplant candidates. *Am J Transplant* 2019;19(11):3155–3161. doi:10.1111/ajt.15525, PMID:31278829.

[14] Laur O, Weaver MJ, Bridge C, Chow E, Rosenthal M, Bay C, *et al*. Computed tomography-based body composition profile as a screening tool for geriatric frailty detection. *Skeletal Radiol* 2021;1–10. doi:10.1007/s00256-021-03951-0, PMID:34862921.

[15] Tandon P, Low G, Mourtzakis M, Zenith L, Myers RP, Abinales JG, *et al*. A Model to Identify Sarcopenia in Patients With Cirrhosis. *Clin Gastroenterol Hepatol* 2016;14(10):1473–1480.e3. doi:10.1016/j.cgh.2016.04.040, PMID:27189915.

[16] Feng H, Wang X, Zhao T, Mao L, Hui Y, Fan X, *et al*. Myopenic obesity determined by visceral fat area strongly predicts long-term mortality in cirrhosis. *Clin Nutr* 2021;40(4):1983–1989. doi:10.1016/j.clnu.2020.09.016, PMID:32977996.

[17] Kang SH, Jeong WK, Baik SK, Cha SH, Kim MY. Impact of sarcopenia on prognostic value of cirrhosis: going beyond the hepatic venous pressure gradient and MELD score. *J Cachexia Sarcopenia Muscle* 2018;9(5):860–870. doi:10.1002/jcsm.12333, PMID:30371017.

[18] Hamaguchi Y, Kaido T, Okumura S, Kobayashi A, Shirai H, Yao S, *et al*. Preoperative Visceral Adiposity and Muscularity Predict Poor Outcomes after Hepatectomy for Hepatocellular Carcinoma. *Liver Cancer* 2019;8(2):92–109. doi:10.1159/000488779, PMID:31019900.

[19] Hawkins KL, Zhang L, Ng DK, Althoff KN, Palella FJ Jr, Kingsley LA, *et al*. Abdominal obesity, sarcopenia, and osteoporosis are associated with frailty in men living with and without HIV. *AIDS* 2018;32(10):1257–1266. doi:10.1097/QAD.0000000000001829, PMID:29794494.

[20] Lai JC, Rahimi RS, Verna EC, Kappus MR, Dunn MA, McAdams-DeMarco M, *et al*. Frailty Associated With Waitlist Mortality Independent of Ascites and Hepatic Encephalopathy in a Multicenter Study. *Gastroenterology* 2019;156(6):1675–1682. doi:10.1053/j.gastro.2019.01.028, PMID:30668935.

[21] Pou KM, Massaro JM, Hoffmann U, Lieb K, Vasan RS, O'Donnell CJ, *et al*. Patterns of abdominal fat distribution: the Framingham Heart Study. *Diabetes Care* 2009;32(3):481–485. doi:10.2337/dc08-1359, PMID:19074995.

[22] Girard J, Lafontan M. Impact of visceral adipose tissue on liver metabolism and insulin resistance. Part II: Visceral adipose tissue production and liver metabolism. *Diabetes Metab* 2008;34(5):439–445. doi:10.1016/j.diabet.2008.04.002, PMID:18562233.

[23] Caan BJ, Cespedes Feliciano EM, Kroenke CH. The Importance of Body Composition in Explaining the Overweight Paradox in Cancer-Counterpoint. *Cancer Res* 2018;78(8):1906–1912. doi:10.1158/0008-5472.CAN-17-3287, PMID:29654153.

[24] Saponaro C, Gaggini M, Carli F, Gastaldelli A. The Subtle Balance between Lipolysis and Lipogenesis: A Critical Point in Metabolic Homeostasis. *Nutrients* 2015;7(11):9453–9474. doi:10.3390/nu7115475, PMID:26580649.

[25] Johannsen DL, Tchoukalova Y, Tam CS, Covington JD, Xie W, Schwarz JM,



- et al*. Effect of 8 weeks of overfeeding on ectopic fat deposition and insulin sensitivity: testing the "adipose tissue expandability" hypothesis. *Diabetes Care* 2014;37(10):2789–2797. doi:10.2337/dc14-0761, PMID:25011943.
- [26] Ishikawa K, Takahashi K, Bujo H, Hashimoto N, Yagui K, Saito Y. Subcutaneous fat modulates insulin sensitivity in mice by regulating TNF- $\alpha$  expression in visceral fat. *Horm Metab Res* 2006;38(10):631–638. doi:10.1055/s-2006-954580, PMID:17075771.
- [27] Ibrahim MM. Subcutaneous and visceral adipose tissue: structural and functional differences. *Obes Rev* 2010;11(1):11–18. doi:10.1111/j.1467-789X.2009.00623.x, PMID:19656312.
- [28] Bunchorntavakul C, Reddy KR. Review article: malnutrition/sarcopenia and frailty in patients with cirrhosis. *Aliment Pharmacol Ther* 2020;51(1):64–77. doi:10.1111/apt.15571, PMID:31701570.
- [29] Minocci A, Savia G, Lucantoni R, Berselli ME, Tagliaferri M, Calò G, *et al*. Leptin plasma concentrations are dependent on body fat distribution in obese patients. *Int J Obes Relat Metab Disord* 2000;24(9):1139–1144. doi:10.1038/sj.ijo.0801385, PMID:11033982.
- [30] Stout MB, Justice JN, Nicklas BJ, Kirkland JL. Physiological Aging: Links Among Adipose Tissue Dysfunction, Diabetes, and Frailty. *Physiology* (Bethesda) 2017;32(1):9–19. doi:10.1152/physiol.00012.2016, PMID:27927801.
- [31] Gioia S, Ridola L, Cristofaro L, Merli M, Faccioli J, Riggio O, *et al*. The improvement in body composition including subcutaneous and visceral fat reduces ammonia and hepatic encephalopathy after transjugular intrahepatic portosystemic shunt. *Liver Int* 2021;41(12):2965–2973. doi:10.1111/liv.15060, PMID:34543504.
- [32] Qiu J, Thapaliya S, Runkana A, Yang Y, Tsien C, Mohan ML, *et al*. Hyperammonemia in cirrhosis induces transcriptional regulation of myostatin by an NF- $\kappa$ B-mediated mechanism. *Proc Natl Acad Sci U S A* 2013;110(45):18162–18167. doi:10.1073/pnas.1317049110, PMID:24145431.
- [33] Feng H, Wang X, Mao L, Yu Z, Cui B, Lin L, *et al*. Relationship between sarcopenia/myosteatosis and frailty in hospitalized patients with cirrhosis: a sex-stratified analysis. *Ther Adv Chronic Dis* 2021;12:20406223211026996. doi:10.1177/20406223211026996, PMID:34377386.
- [34] Chan GC, Than WH, Kwan BC, Lai KB, Chan RC, Ng JK, *et al*. Adipose expression of miR-130b and miR-17-5p with wasting, cardiovascular event and mortality in advanced chronic kidney disease patients. *Nephrol Dial Transplant* 2021:gfab287. doi:10.1093/ndt/gfab287, PMID:34601609.
- [35] Greenland S, Pearce N. Statistical foundations for model-based adjustments. *Annu Rev Public Health* 2015;36:89–108. doi:10.1146/annurev-publhealth-031914-122559, PMID:25785886.