

OPEN

# Absence of Bladder Outlet Obstruction Is an Independent Risk Factor for Prostate Cancer in Men Undergoing Prostate Biopsy

Luigi Cormio, MD, PhD, Giuseppe Lucarelli, MD, PhD, Oscar Selvaggio, MD, Giuseppe Di Fino, MD, Vito Mancini, MD, Paolo Massenio, MD, Francesco Troiano, MD, Francesca Sanguedolce, MD, Pantaleo Bufo, MD, and Giuseppe Carrieri, MD

**Abstract:** The purpose of this study was to investigate the relationship between bladder outlet obstruction (BOO) and the risk of being diagnosed with prostate cancer (PCa).

Study population consisted of 2673 patients scheduled for the first prostate biopsy (PBx). All patients underwent uroflowmetry before PBx; those with a peak flow rate (PFR) <10 mL/s were considered to have BOO.

The incidence of PCa was 41.3% (1104/2673) in the overall population and 34.1% (659/1905) in patients with serum prostate-specific antigen (PSA) ≤ 10 ng/mL. Univariate and multivariate logistic regression analyses showed that patients with BOO had a significantly ( $P < 0.0001$ ) lower risk than those without BOO of being diagnosed with PCa (33.1% vs 66.9% in the overall population; 30% vs 70% in patients with PSA ≤ 10 ng/mL). As the presence of BOO was significantly correlated to a large prostate volume, another independent predictor of PBx outcome, we tested whether these parameters could be used to identify, in the subset of patients with PSA ≤ 10 ng/mL, those who could potentially be spared from a PBx. If we would have not biopsied patients with BOO and prostate volume ≥ 60 mL, 14.5% of biopsies could have been avoided while missing only 6% of tumors. Only 10% of the tumors that would have been missed were high-risk cancers.

In conclusion, in men undergoing PBx, the absence of BOO, as determined by a PFR ≥ 10 mL/s, is an independent risk factor for PCa. Our study provides ground for this simple, noninvasive, objective parameter being used, alone or in combination with prostate volume, in the decision-making process of men potentially facing a PBx.

(*Medicine* 95(7):e2551)

Editor: Giandomenico Roviello.

Received: August 21, 2015; revised: December 23, 2015; accepted: December 24, 2015.

From the Department of Urology (LC, GL, OS, GDF, VM, PM, FT, GC) and Renal Transplantation, University of Foggia, Foggia, Italy; Department of Emergency and Organ Transplantation (GL), University of Bari, Bari, Italy; and Department of Pathology (FS, PB), University of Foggia, Foggia, Italy.

Correspondence: Luigi Cormio, Department of Urology and Renal Transplantation, University of Foggia Via Pinto, Foggia, Italy (e-mail: luigicormio@libero.it).

Correspondence: Giuseppe Lucarelli, Department of Emergency and Organ Transplantation—Urology, Andrology and Kidney Transplantation Unit—Piazza G. Cesare, Bari, Italy (e-mail: giuseppe.lucarelli@inwind.it).

LC and GL equally contributed to this study.

The authors have no conflicts of interest to disclose.

Copyright © 2016 Wolters Kluwer Health, Inc. All rights reserved.

This is an open access article distributed under the Creative Commons Attribution License 4.0, which permits unrestricted use, distribution, and reproduction in any medium, provided the original work is properly cited. ISSN: 0025-7974

DOI: 10.1097/MD.0000000000002551

**Abbreviations:** 5-ARI = 5-alpha-reductase inhibitor, ASAP = atypical small acinar proliferation, BOO = bladder outlet obstruction, BPO = benign prostatic obstruction, DRE = digital rectal examination, LUTS = lower urinary tract symptoms, PBx = prostate biopsy, PCa = prostate cancer, PFR = peak flow rate, PIN = prostatic intraepithelial neoplasia, PSA = prostate-specific antigen, TRUS = transrectal ultrasound, TURP = transurethral resection of the prostate.

## INTRODUCTION

Prostate biopsy (PBx) is the standard method for diagnosing prostate cancer (PCa) but the diagnostic yield of this procedure remains low. In current clinical practice the cancer detection rate of a first extended PBx prompted by an elevated serum prostate-specific antigen (PSA) level and/or an abnormal digital rectal examination (DRE) is in the range of 40% and has not been significantly improved by nomograms combining PSA with other readily available clinical characteristics (age, DRE findings, prostate volume, etc).<sup>1,2</sup> A diagnostic and prognostic role has been evaluated for novel biomarkers such as the precursor isoform [-2]proPSA (p2PSA), Prostate Cancer Antigen 3 (PCA3), and cancer metabolism-related proteins.<sup>3–8</sup> The introduction of these new circulating markers have improved but not dramatically the accuracy of PCa diagnosis and prognosis. Multiparametric magnetic resonance imaging (mMRI) of the prostate has been suggested to improve PBx diagnostic yield but the optimal clinical application of this imaging technique remains under investigation.<sup>9</sup> Moreover, diagnostic tools such as mMRI are expensive and/or invasive, thus not easily applicable to everyday clinical practice. In this scenario, the identification of cheap and readily available predictive tools that can be used either alone or in association with other markers represents a major clinical issue.

The potential relationship between bladder outlet obstruction (BOO) and increased serum PSA has been pointed out by Laniado et al.<sup>10</sup> They have shown that high PSA levels in patients with lower urinary tract symptoms (LUTS) are significantly associated with BOO, resulting in 89% of patients with PSA > 4 ng/mL having BOO due to benign prostatic obstruction (BPO). It has subsequently been shown that patients with minor or no LUTS undergoing PBx because of an elevated serum PSA and being diagnosed with benign prostate all had BOO on pressure uroflowmetry.<sup>11</sup>

A definite diagnosis of BOO requires a pressure-flow study but, given the invasivity of this test, the initial objective evaluation of BOO relies on uroflowmetry. More than 90% of men with a peak flow rate (PFR) of <10 mL/s have BOO.<sup>12</sup>

Given the correlation between BOO and increased PSA levels, the present study aimed to determine whether BOO, as

assessed by uroflowmetry, was associated with the risk of being diagnosed with prostate cancer (PCa), in other words whether BOO may be used to predict the outcome of prostate biopsy (PBx).

## Patients and Methods

Data of patients scheduled for ultrasound-guided transrectal PBx because of increased serum PSA ( $\geq 4$  ng/mL) and/or abnormal digital rectal examination (DRE) were prospectively entered into our institutional review board approved database. All patients underwent PSA measurement before DRE and transrectal ultrasound (TRUS). Uroflowmetry was carried out before PBx, waiting for the patient to report a strong sensation to void. Following local anaesthesia,<sup>13,14</sup> TRUS was used to determine prostate volume and to guide transrectal prostate sampling according to our systematic 18-core biopsy scheme.<sup>15</sup>

Men receiving medical therapy known to affect PSA levels, or who had previously undergone PBx or invasive treatment for benign prostatic hyperplasia, or with dwelling urethral catheters, or with a voided volume of  $< 150$  mL were excluded from the present case-control study.

Two senior uropathologists blind to uroflowmetry data evaluated the specimens according to contemporary diagnostic criteria for high-grade prostatic intraepithelial neoplasia (HGPIN), atypical small acinar proliferation (ASAP) of prostate, and PCa. Patients diagnosed with HGPIN or ASAP were excluded from the present analysis.

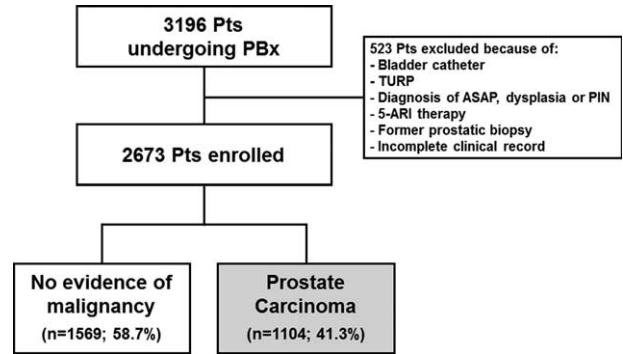
The study protocol was approved by University of Foggia Ethics Committee and it conforms to the provisions of the Declaration of Helsinki. Written informed consent to take part was given by all participants.

## Statistical Analysis

Clinical characteristics were considered continuous variables and reported as medians; those with normal distribution, according to the Skewness and Kurtosis test, were compared by Student's *t* test for paired or unpaired data, whereas those with a nonparametric distribution were compared by the Mann–Whitney *U*-test for independent groups. The Spearman correlation was used to evaluate the association between 2 variables, whereas frequencies were compared by the  $\chi^2$  test. The combined predictive effect of the covariates was tested by logistic regression analysis, performing a backward selection procedure with a removal criterion of  $P > 0.10$  based on the likelihood ratio test. Model calibration was measured by the Hosmer–Lemeshow goodness of fit test. A 2-sided  $P < 0.05$  was considered statistically significant. Statistical calculations were carried out using the MedCalc 9.2.0.1 (MedCalc software, Mariakerke, Belgium) and PASW 18 software (PASW 18, SPSS, Chicago, IL).

## RESULTS

Between January 2006 and December 2014, a total of 2673 patients who underwent transrectal ultrasound-guided PBx at our institution met the inclusion criteria and were enrolled in the present study (Figure 1). Their descriptive characteristics are summarized in Table 1. PCa was found in 1104 patients (41.3%), whereas the remaining 1569 (58.7%) had no evidence of malignancy (NEM). Univariate analysis showed a statistically significant difference in all tested variables (age, PSA, DRE, prostate volume, and PFR) between patients with and without PCa (Table 1). In the subset of patients with PSA levels up to 10 ng/mL; however, there was no significant difference in



**FIGURE 1.** Algorithm showing patient selection and exclusion criteria for the present study. 5-ARI = 5-alpha-reductase inhibitor, ASAP = atypical small acinar proliferation; PBx = prostate biopsy; PIN = prostatic intraepithelial neoplasia, TURP = transurethral resection of the prostate.

DRE findings between patients with and without PCa (Table 1). Multivariate logistic regression analysis showed that all variables but DRE were statistical significant predictors of PBx outcome in the overall population as well as in patients with PSA up to 10 ng/mL (Table 2). The Hosmer–Lemeshow statistics confirmed adequate model calibration ( $P = 0.2$ ).

To test the impact of BOO on PBx outcome, patients were stratified according to their PFR value, namely  $< 10$  mL/s vs  $\geq 10$  mL/s (Table 3). There was a statistically significant difference in age, prostate volume and, most important, in PCa detection rate between patients with and without BOO in both overall population and patients with PSA  $\leq 10$  ng/mL (Table 3). Interestingly, there was no difference in PSA levels between patients with and without BOO.

Since prostate volume and PFR were found to be reliable predictors of PBx outcome and to have significant inverse correlation ( $r_s = -0.246$ ;  $P < 0.0001$ ), we tested whether these parameters could be used to identify, in the subset of patients with PSA  $\leq 10$  ng/mL, those who could potentially be spared from a PBx. Using 60 mL as cutoff for prostate volume (median value in patients with NEM) and 10 mL/s as cutoff for PFR, 14.5% (277/1905) of biopsies could have been avoided while missing only 6% (39/650) of tumors, with only 4 (10%) of the tumors that would have been missed being high-risk (Gleason  $> 7$ ) cancers (Table 4).

## DISCUSSION

The present study confirmed, by univariate and multivariate analyses, that patients with PCa are older, have higher PSA levels and smaller prostate volume than those without PCa. It also demonstrated that patients with PCa have higher PFR than those without PCa, and this finding occurred in the overall population as well as in patients with PSA  $\leq 10$  ng/mL. To our knowledge, this finding is novel and strongly supports the hypothesis that BOO, as determined by a PFR  $< 10$  mL/s, may increase serum PSA and, by doing so, may lead to potentially unnecessary prostate biopsies.

It is attractive to assume that the increased voiding pressure associated with BOO could lead to urine reflux into prostatic ducts with consequent inflammation and PSA increase. It well known that urine contains different chemical compounds, including uric acid and calcium phosphate crystals, that could

**TABLE 1.** Comparison of Clinical and Pathological Characteristics of Men With No Evidence of Malignancy (NEM) and Men With Prostate Cancer (PCa)

Characteristic	NEM	PCa	Test Results
	N = 1569	N = 1104	
<b>Overall Population</b>			
Age, y			
Median	66	70	<0.0001
95% CI	65–66	69–70	
PSA, ng/mL			
Median	6.6	7.8	<0.0001
95% CI	6.4–6.8	7.4–8.3	
Prostate volume, mL			
Median	60.0	43.0	<0.0001
95% CI	58.0–60.0	61.7–65.1	
Abnormal DRE	442 (28.2%)	372 (32.8%)	0.002
Peak flow rate, mL/s			
Median	12.0	13.0	<0.0001
95% CI	11.5–12.0	12.3–13.5	
Population with PSA ≤ 10 ng/mL	N = 1255	N = 650	
Age, y			
Median	65	68	<0.0001
95% CI	65–66	68–69	
PSA, ng/mL			
Median	5.8	6.5	0.02
95% CI	5.7–6.0	6.1–6.8	
Prostate volume, mL			
Median	58.0	40.0	<0.0001
95% CI	55.0–60.0	40.0–42.9	
Abnormal DRE	344 (27.4%)	203 (31.2%)	0.24
Peak flow rate, mL/s			
Median	12.0	13.7	<0.0001
95% CI	11.6–12.0	13.0–14.0	

CI = confidence interval, DRE = digital rectal examination, NEM = no evidence of malignancy, PCa = prostate cancer, PSA = prostate-specific antigen.

be particularly damaging for prostate epithelium. Martinon et al<sup>16</sup> have shown that these crystals act as danger signal released from dying cells, directly engaging the caspase-1-activating NALP3 (also called cryopyrin) inflammasome, resulting in the production of IL-1β and IL-18. The local production of inflammatory cytokines can increase the influx of inflammatory cells, contributing to prostate inflammation, epithelial damage, and increased release of PSA.

In our experience, the prevalence of PCa was significantly lower in patients with BOO than in patients without BOO (33.1% vs 66.9%; *P* < 0.0001); such difference was even greater (30% vs 70%; *P* < 0.0001) in the subset of patients with PSA ≤ 10 ng/mL. Interestingly, there was no difference in PSA levels between patients with and without BOO in both overall population and patients with PSA ≤ 10 ng/mL, further supporting the concept that, for the same PSA level, the likelihood of being diagnosed with PCa is much greater for the nonobstructed than for the obstructed patients.

As mentioned above, our study is, to our knowledge, the first to address the relationship between PCa and BOO/BPO as objectively assessed by uroflowmetry. A few studies have previously addressed the potential relationship between PCa and LUTS yielding controversial results. Martin et al<sup>17</sup> found that the severity of LUTS, as assessed by the validated International Prostate Symptom Score (IPSS), was positively

associated with the incidence of localized PCa. However, Matsubara et al<sup>18</sup> found no difference in IPSS score in men with and without PCa, whereas Porter et al<sup>19</sup> found that a low American Urological Association (AUA) symptom score was an independent predictor of PCa detection. A large multicenter screening study, whereby 264 of 6630 patients were diagnosed with PCa, revealed that the absence of urinary symptoms predicted PCa; however, no validated symptom score questionnaire was used.<sup>20</sup> Another large screening study, whereby 2467 out of 65,871 men were diagnosed with PCa, showed that a history of LUTS improved the prediction of an individual's risk for PCa, but also that LUTS among men with a PSA level ≥ 3 ng/mL were negatively associated with PCa.<sup>21</sup> Again, no validated symptom score questionnaire was used. Finally, the Gothenburg Randomized Screening Trial,<sup>22</sup> not using a validated symptom score questionnaire, showed that the absence of voiding symptoms was an independent risk factor for PCa detection, but this inverse association was restricted to men with large (>38 mL) prostates. Moreover, in a recent study of 1780 patients undergoing first PBx, we showed that prostate volume and postvoid residual urinary volume were 2 accurate predictors of biopsy outcome.<sup>23</sup>

For many years there has been a discussion about the reason for the inverse relationship between PCa and prostate volume. Many studies demonstrated that the risk of a large

**TABLE 2.** Multivariate Analysis of the Impact of Age, Prostate Volume, Prostate-Specific Antigen (PSA), Peak Flow Rate (PFR), and Abnormal Digital Rectal Examination on Biopsy Outcome

Overall Population Covariate	OR	95% CI	P
Age, years	1.06	1.05–1.07	<0.0001
Prostate volume, mL	0.98	0.97–0.98	<0.0001
PSA, ng/mL	1.04	1.02–1.05	<0.0001
PFR, mL/s	1.02	1.01–1.03	0.0007
Abnormal DRE	–	–	0.42
Population with PSA ≤10 ng/mL			
Covariate	OR	95% CI	P
Age, years	1.06	1.04–1.07	<0.0001
Prostate volume, mL	0.98	0.97–0.99	<0.0001
PSA, ng/mL	1.01	0.96–1.07	0.004
PFR, mL/s	1.03	1.01–1.04	0.0001
Abnormal DRE	–	–	0.36

CI = confidence interval, OR = odds ratio, PFR = peak flow rate, PSA = prostate-specific antigen.

prostate volume to result in a reduced probability of sampling malignant tissue is low.<sup>24,25</sup> Zackrisson et al found that, among 456 men with 1 set of benign PBx and who underwent 2 additional sets of 18-core PBx, in no cases of prostates with

volume of <20 mL, either PCa or PSA normalization was found.<sup>24</sup> Similarly, van Leeuwen et al found that, among 1305 men with an initial benign PBx, those with smaller prostates and high PSA values had, in the following 8 years,

**TABLE 3.** Comparison of Clinical Characteristics and Cancer Detection Rates in Men With or Without Bladder Outlet Obstruction (BOO)

Characteristic	BOO (PFR<10 mL/s)	No BOO (PFR≥10 mL/s)	Test Results
Overall Population	N = 981	N = 1692	
Age, y			
Median	68	67	<0.0001
95% CI	68–69	66–67	
PSA, ng/mL			
Median	7.0	6.9	0.1
95% CI	6.8–7.4	6.7–7.1	
Prostate volume, mL			
Median	60.0	48.0	<0.0001
95% CI	57.0–61.0	46.0–50.0	
Prostate cancer	365 (33.1%)	739 (66.9%)	<0.0001
Gleason score	S		
<7	109 (29.8%)	252 (34.1%)	0.17
=7	100 (27.4%)	211 (28.6%)	0.73
>7	156 (42.8%)	276 (37.3%)	0.09
Population with PSA≤10 ng/mL	N = 682	N = 1223	
Age, y			
Median	67	66	<0.0001
95% CI	67–68	65–66	
PSA, ng/mL			
Median	6.0	5.9	0.65
95% CI	5.8–6.3	5.8–6.1	
Prostate volume, mL			
Median	58.0	48.0	<0.0001
95% CI	55.0–60.0	46.0–50.0	
Prostate cancer	195 (30%)	455 (70%)	<0.0001
Gleason score			
<7	76 (39.0%)	188 (41.3%)	0.64
=7	62 (31.8%)	141 (31.0%)	0.91
>7	57 (29.2%)	126 (27.7%)	0.76

BOO = bladder outlet obstruction, CI = confidence interval, PFR = peak flow rate, PSA = prostate-specific antigen.

**TABLE 4.** Impact of Bladder Outlet Obstruction (BOO = PFR < 10 mL/s) and Large Prostate Volume (PVol > 60 mL) on Prostate Cancer Detection Rate

Characteristic	BOO and PVol > 60 mL	No BOO and PVol ≤ 60 mL	Test Results
<b>Overall Population</b>	<b>N = 398</b>	<b>N = 1014</b>	
Age, y			
Median	67	66	0.004
95% CI	67–68	66–67	
PSA, ng/mL			
Median	6.9	6.7	0.19
95% CI	6.7–7.0	6.3–7.0	
PCa detection rate	92/398 (23.1%)	516/1014 (50.9%)	<0.0001
Population with PSA ≤ 10 ng/mL	N = 277	N = 778	
Age, y			
Median	66	65	0.02
95% CI	66–67	65–66	
PSA, ng/mL			
Median	5.9	5.8	0.34
95% CI	5.7–6.0	5.6–5.9	
PCa detection rate	39/277 (14.0%)	345/778 (44.3%)	<0.0001

BOO = bladder outlet obstruction, CI = confidence interval, PFR = peak flow rate, PSA = prostate-specific antigen, PVol = prostate volume.

an increased risk of PCa detection and of a more aggressive tumors.<sup>25</sup>

Our study confirms the inverse relationship between PCa and prostate volume as well as the inverse correlation between prostate volume and PFR. Taking these findings together, there are grounds to assume that large prostate volume resulting in BOO may falsely increase PSA levels thus leading to unnecessary PBxs. As a matter of fact, our study showed, in agreement with the Gothenburg Randomized Screening Trial,<sup>22</sup> that patients with large prostate volume and BOO had a significantly lower risk of being diagnosed with PCa. To turn such findings into clinical practice, we tested whether these 2 objective clinical parameter, PFR and prostate volume, could play a role in the decision-making process of candidates to PBx because of an increased serum PSA level. If we would have not biopsied patients with BOO (PFR < 10 mL/s) and large prostate volume (>60 mL, the median value in patients with NEM), 14.9% (398/2673) PBxs would have avoided while missing 8.3% (92/1104) PCas, including 41 high risk cancers. In the subset of patients with PSA ≤ 10 ng/mL, 14.5% (277/1905) of PBxs could have been avoided while missing 6% (39/650) of PCas; only 4 (10%) of the PCas that would have been missed were high-risk cancers.

The strengths of our study include its prospective nature, the use of a standardized extended PBx scheme as well as a standardized protocol for PFR measurement, and pathologists being blind to uroflowmetry data. Potential study limitations include single measurement of PFR, although this test is widely considered accurate, study population consisting of white men only, thus limiting findings applicability to other ethnicities, and lack of external pathological review. In addition, it should be pointed out that in this study we used a TRUS-guided biopsy with an extended 10-core biopsy scheme as previously described.<sup>13,14</sup> Although we have shown that the addition of 4 lateral peripheral samples did not increase the cancer detection rate of the 10-core biopsy scheme,<sup>15</sup> it is well known that with this approach it exists the possibility of undersampling the prostate, especially in the anterior and apical areas. These

regions are well recognized as being difficult to sample with a transrectal approach.<sup>26,27</sup> In recent years, the introduction of active surveillance as option for patients with very low-risk PCa has led to the identification of a subset of patients who should be considered for further biopsy, as their pathology might be aggressive. In this scenario, an emerging entity is represented by the prostatic evasive anterior tumor syndrome (PEATS), a condition characterized by combination an aggressive and anterior PCa that manifests as rising PSA values in patients with previous negative TRUS-guided biopsy.<sup>28</sup> These data highlight the importance of performing a PBx using a transperineal approach in high-risk patients with prior negative transrectal biopsy.

### CONCLUSIONS

In men undergoing PBx, the absence of BOO, as determined by a PFR ≥ 10 mL/s, was found to be an independent risk factor for PCa. These findings suggest the PFR to represent a simple, noninvasive, objective parameter to predict biopsy outcome that can easily be used by clinicians, alone or in combination with prostate volume, in the decision-making process of men potentially facing a PBx. Our study also provides grounds for this new parameter being externally validated in other ethnicities as well as being incorporated into more sophisticated prognostic models.

### REFERENCES

- Serag H, Banerjee S, Saeb-Parsy K, et al. Risk profiles of prostate cancers identified from UK primary care using national referral guidelines. *Br J Cancer*. 2012;106:436–439.
- Schröder F, Kattan MW. The comparability of models for predicting the risk of a positive prostate biopsy with prostate-specific antigen alone: a systematic review. *Eur Urol*. 2008;54:274–290.
- Loeb S, Sanda MG, Broyles DL, et al. The prostate health index selectively identifies clinically significant prostate cancer. *J Urol*. 2015;193:1163–1169.



4. Lucarelli G, Fanelli M, Larocca AM, et al. Serum sarcosine increases the accuracy of prostate cancer detection in patients with total serum PSA less than 4.0 ng/ml. *Prostate*. 2012;72:1611–1621.
5. Lucarelli G, Rutigliano M, Bettocchi C, et al. Spondin-2, a secreted extracellular matrix protein, is a novel diagnostic biomarker for prostate cancer. *J Urol*. 2013;190:2271–2277.
6. Lucarelli G, Dittono P, Bettocchi C, et al. Serum sarcosine is a risk factor for progression and survival in patients with metastatic castration-resistant prostate cancer. *Future Oncol*. 2013;9:899–907.
7. Ferro M, Lucarelli G, Bruzzese D, et al. Improving the prediction of pathologic outcomes in patients undergoing radical prostatectomy: the value of prostate cancer antigen 3 (PCA3), prostate health index (phi) and sarcosine. *Anticancer Res*. 2015;35:1017–1023.
8. Lucarelli G, Rutigliano M, Galleggiante V, et al. Metabolomic profiling for the identification of novel diagnostic markers in prostate cancer. *Expert Rev Mol Diagn*. 2015:1–14.
9. de Cobelli O, Terracciano D, Tagliabue E, et al. Predicting pathological features at radical prostatectomy in patients with prostate cancer eligible for active surveillance by multiparametric magnetic resonance imaging. *PLoS One*. 2015;10:e0139696.
10. Laniado ME, Hockrim JM, Marronaro A, et al. Serum prostate-specific antigen to predict the presence of bladder outlet obstruction in men with urinary symptoms. *BJU Int*. 2004;94:1283–1286.
11. van Renterghem K, Van Koeveringe G, Van Kerrebroeck P. Rising PSA in patients with minor LUTS without evidence of prostatic carcinoma: a missing link? *Int Urol Nephrol*. 2007;39:1107–1113.
12. Abrams P, Bruskewitz R, De La Rosette J, et al., The diagnosis of bladder outlet obstruction: urodynamics. In: Cockett ATK, Khoury S, Aso Y, et al, eds. *Proceedings, the 3rd International Consultation on BPH. Proceedings, the 3rd International Consultation on BPH* World Health Organization; 1995:–367.
13. Cormio L, Lorusso F, Selvaggio O, et al. Non-infiltrative anesthesia for transrectal prostate biopsy: a randomized prospective study comparing lidocaine-prilocaine cream and lidocaine-ketorolac gel. *Urol Oncol*. 2013;31:68–73.
14. Cormio L, Pagliarulo V, Lorusso F, et al. Combined perianal-intrarectal (PI) lidocaine-prilocaine (LP) cream and lidocaine-ketorolac gel provide better pain relief than combined PI LP cream and periprostatic nerve block during transrectal prostate biopsy. *BJU Int*. 2012;109:1776–1780.
15. Cormio L, Scattoni V, Lorusso F, et al. Prostate cancer detection rates in different biopsy schemes. Which cores for which patients? *World J Urol*. 2014;32:341–346.
16. Martinon F, Pétrilli V, Mayor A, et al. Gout-associated uric acid crystals activate the NALP3 inflammasome. *Nature*. 2006;440:237–241.
17. Martin RM, Vatten L, Gunnell D, et al. Lower urinary tract symptoms and risk of prostate cancer: the HUNT 2 Cohort, Norway. *Int J Cancer*. 2008;123:1924–1928.
18. Matsubara A, Yasumoto H, Teishima J, et al. Lower urinary tract symptoms and risk of prostate cancer in Japanese men. *Int J Urol*. 2006;13:1098–1102.
19. Porter CR, Kim J. Low AUA symptom score independently predicts positive prostate needle biopsy: results from a racially diverse series of 411 patients. *Urology*. 2004;63:90–94.
20. Catalona WJ, Richie JP, Ahmann FR, et al. Comparison of digital rectal examination and serum prostate specific antigen in the early detection of prostate cancer: results of a multicenter clinical trial of 6,630 men. *J Urol*. 1994;151:1283–1290.
21. Collin SM, Metcalfe C, Donovan J, et al. Associations of lower urinary tract symptoms with prostate-specific antigen levels, and screen-detected localized and advanced prostate cancer: a case-control study nested within the UK population-based ProtecT (Prostate testing for cancer and Treatment) study. *BJU Int*. 2008;102:1400–1406.
22. Fränlund M, Carlsson S, Stranne J, et al. The absence of voiding symptoms in men with a prostate-specific antigen (PSA) concentration of  $\geq 3.0$  ng/mL is an independent risk factor for prostate cancer: results from the Gothenburg Randomized Screening Trial. *BJU Int*. 2012;110:638–643.
23. Cormio L, Lucarelli G, Netti GS, et al. Post-void residual urinary volume is an independent predictor of biopsy results in men at risk for prostate cancer. *Anticancer Res*. 2015;35:2175–2182.
24. Zackrisson B, Aus G, Lilja H, et al. Follow-up of men with elevated prostate-specific antigen and one set of benign biopsies at prostate cancer screening. *Eur Urol*. 2003;43:327–332.
25. van Leeuwen P, van den Bergh R, Wolters T, et al. Screening: should more biopsies be taken in larger prostates? *BJU Int*. 2009;104:919–924.
26. Wright JL, Ellis WJ. Improved prostate cancer detection with anterior apical prostate biopsies. *Urol Oncol*. 2006;24:492–495.
27. Taira AV, Merrick GS, Galbreath RW, et al. Performance of transperineal template-guided mapping biopsy in detecting prostate cancer in the initial and repeat biopsy setting. *Prostate Cancer Prostatic Dis*. 2010;13:71–77.
28. Lawrentschuk N, Haider MA, Daljeet N, et al. Prostatic evasive anterior tumours: the role of magnetic resonance imaging. *BJU Int*. 2010;105:1231–1236.