

Cite this: *RSC Adv.*, 2019, 9, 24875Received 14th June 2019
Accepted 1st August 2019

DOI: 10.1039/c9ra04467a

rsc.li/rsc-advances

A novel carboxylic-functional indole-based aerogel for highly effective removal of heavy metals from aqueous solution *via* synergistic effects of face–point and point–point interactions†

Li Yang,^{ab} Peng Yang,^a Yuanchi Ma^b and Guanjun Chang^{ab*}

A new type of carboxylic-functional indole-based aerogel (CHIFA) has been successfully prepared *via* a facile sol–gel technology, which possessed a highly effective removal of heavy metals from aqueous solution through the synergistic effects of face–point and point–point interactions.

Introduction

In recent years, the health of human beings has been endangered by heavy metal ions, and the necessity for removal of heavy metals from aqueous solution is a very important issue due to their toxicity and bioaccumulation.^{1–4} Moreover, excessive intake of heavy metal ions, for example, Ni(II),⁵ Cu(II),⁶ Zn(II)⁷ and Cr(III)⁸ is harmful to humans and other species. A wide range of technologies have been devised for the removal of metal ions from water including chemical precipitation,⁹ organic chelation,¹⁰ biological removal,¹¹ ion-exchange,^{12,13} membrane separation¹⁴ and adsorption.^{15,16} Among these approaches, adsorption is found to be the most attractive way due to its advantages of relative simplicity, easy scale-up and high efficiency over a wide concentration range.^{17,18} Developing novel efficient, economical, green and environment-friendly adsorbents for heavy metal ions has been considered as an effective way to mitigate environmental deterioration. Aerogels have many specific features such as large surface area, high porosity, adjustable pore size, thermal and chemical stability, showing great advantages for the removal of heavy metals.^{19–22} However, the inherent physisorptive metal-adsorption mechanism makes them inevitably suffer from low adsorption capacity and efficiency hence severely hampers their practical applications. Recently, it was shown that porous materials

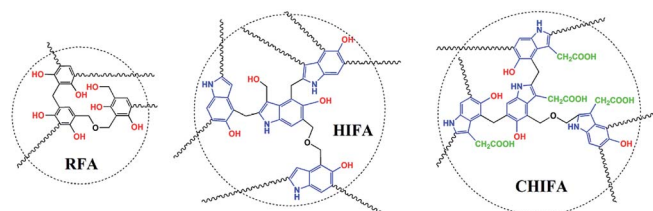
containing multiple functional groups exhibit combined effects of each functional group that improve adsorption capacity and efficiency of heavy metals.^{18,23} The previous study of our team has found that the 4-HIFA containing hydroxyl and electron-rich indole ring possessed strong affinity for heavy metals *via* the synergistic effects of complexation and cation– π interactions,²³ however, the single functional group means that one hydroxyl can only complex one heavy metal, leading to less improvement in the heavy metals adsorption capacities for these indole-based aerogel materials. Therefore, to better utilize the cation– π interactions for developing new heavy metals adsorbent with both excellent adsorption capacity and efficiency still remains attractive prospects and great challenge. A recent study indicated that carboxyl group can be considered as a functionality for removal of heavy metals by porous adsorbents.¹⁷

Inspired by those fascinating studies, we hypothesized that heavy metal ions adsorption capacity and efficiency can be improved by involving hydroxyl, carboxyl and indole groups in aerogel materials where multiple mechanisms work for heavy metals removal. In this work, a novel carboxylic-functional indole-based aerogel (CHIFA) (Schemes 1 and S4†) was tactfully designed and prepared through a simple and gentle gelation reaction where the bifunctional hydroxyl and carboxyl groups were set up at the two sides of the indole plane, respectively (the material preparation and characterization are

^aState Key Laboratory for Environment-friendly Energy Materials, School of Material Science and Engineering, National Engineering Technology Center for Insulation Materials, Southwest University of Science and Technology, Mianyang, 621010, P. R. China. E-mail: gjchang@mail.usc.edu.cn

^bDepartment of Chemical and Biomolecular Engineering, University of Pennsylvania, Philadelphia, Pennsylvania, 19104, USA

† Electronic supplementary information (ESI) available: Details of preparation and characterization of the RFA, HIFA and CHIFA aerogels; SEM image, nitrogen adsorption–desorption isotherms and the pore size distribution of RFA and HIFAs; kinetics data and sorption data of CHIFA toward Ni²⁺, Cu²⁺, Cr³⁺ and Zn²⁺. See DOI: 10.1039/c9ra04467a



Scheme 1 Chemical structures of RFA, HIFA, and CHIFA aerogels.



detailed in the ESI†). On the one hand, the electron-rich π indole plane is hopeful for attracting heavy metals *via* cation– π interactions which belong to face–point interactions. On the other hand, the abundant phenolic-OH and carboxyl groups in the CHIFA aerogel provide more adsorption sites than that of the previously reported indole-based aerogel²³ to metal ions *via* complexations, which belong to point–point interactions. It was expected that the synergistic effects of face–point and point–point interactions would endow the resulting carboxylic-functional indole-based aerogel (CHIFA) remarkable heavy metals adsorption capacity and efficiency (Fig. 1).

The as-prepared CHIFA is a black, porous ultralight material, as shown in inset in Fig. 2a. For comparison, resorcinol–formaldehyde aerogel (RFA) and 5-hydroxyindole–formaldehyde aerogel (HIFA) were prepared as well (Schemes 1, S2 and S3†). RFA, HIFA and CHIFA aerogels were characterized by Fourier transform infrared and ¹³C CP/MAS NMR, RFA was characterized by Fourier transform infrared, and the results were in good agreement with the proposed structures (Fig. S4–S6†).

Results and discussion

We first quantified the porosity of aerogels by scanning electron microscopy (SEM) and sorption analysis using nitrogen as the sorbate molecule. Fig. 2a shows the scanning electron microscopy (SEM) image of CHIFA. The structure, which is very loose, contains mesopores and macropores. It consists of very small spheres, arranged in a filament-like structure to form a three-dimensional matrix, pretty similar to the structure of the RFA gel.²⁴ As shown in Fig. S7,† RFA and HIFA have similar porous structures with minor differences in the size and shape of the aggregated particles. The porosity of aerogels were further quantified by sorption analysis using nitrogen as the sorbate molecule. The nitrogen adsorption–desorption isotherms of CHIFA measured at $-196\text{ }^{\circ}\text{C}$ is shown in Fig. 2b, displaying a typical curve of type IV.²⁵ There are hysteresis loops at relative pressures of 0.7–0.95, suggesting the presence of mesopores and macropores in the sample,²⁶ in good agreement with those observed with the SEM technique (Fig. 2a). Correspondingly, the pore size is distributed at 43 nm, as calculated by the nonlocal density functional theory method (NLDFT). The BET specific surface area and pore volume of CHIFA are estimated to be $143\text{ m}^2\text{ g}^{-1}$ and $0.98\text{ cm}^3\text{ g}^{-1}$, respectively (Fig. 2b). As shown in Fig. S7,† RFA and HIFA have similar nitrogen adsorption–desorption isotherms and the pore size distribution (inset in

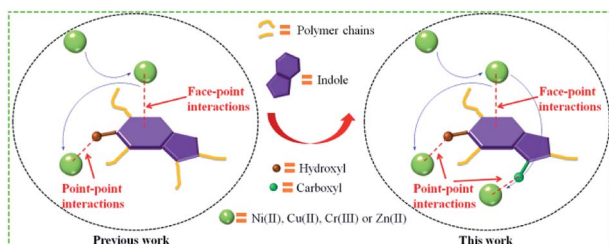


Fig. 1 Schematic illustration of heavy metals adsorption using CHIFA.

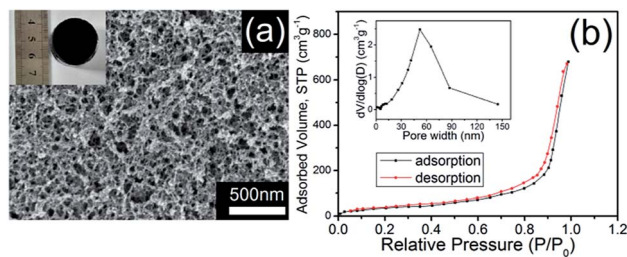


Fig. 2 (a) SEM image and photograph (inset), (b) nitrogen adsorption–desorption isotherms and the pore size distribution (inset) of CHIFA.

Fig. S7†). The BET specific surface area of RFA and HIFA were estimated to be $118\text{ m}^2\text{ g}^{-1}$ and $130\text{ m}^2\text{ g}^{-1}$, the pore size was distributed at 52 nm and 46 nm, respectively.

It was expected that the resulting CHIFA with OH-containing and COOH-containing indole-based porous architecture may attract small heavy metal ions by the synergistic effects of face–point and point–point interactions between the CHIFA network and heavy metals, which inspires us to investigate its heavy metal ions adsorption capacity.

Fig. S8† shows the dependences of the adsorption capacity for Ni^{2+} , Cu^{2+} , Cr^{3+} and Zn^{2+} on the pH value (2.0–6.0) over CHIFA. Fig. S9† shows Ni^{2+} , Cu^{2+} , Cr^{3+} and Zn^{2+} adsorption recycled for 4 times.

The adsorption kinetics of the Ni^{2+} , Cu^{2+} , Cr^{3+} and Zn^{2+} ions by CHIFA was investigated in order to study adsorption rate and pathways of adsorption until equilibrium was reached. The results (Tables S1–S4†) and sorption kinetics curves (Fig. 3a) show rapid uptake rates and high removal efficiency. Within 2 min, the CHIFA achieved $\geq 97\%$ removal rates and K_d values of $>10^4\text{ mL g}^{-1}$ for Ni^{2+} (Table S1†) and Cu^{2+} (Table S2†). Within 5 min, the CHIFA achieved $\geq 98\%$ removal rates and K_d values of $>10^4\text{ mL g}^{-1}$ for Ni^{2+} (Table S1†) and $>10^5\text{ mL g}^{-1}$ for Cu^{2+} (Table

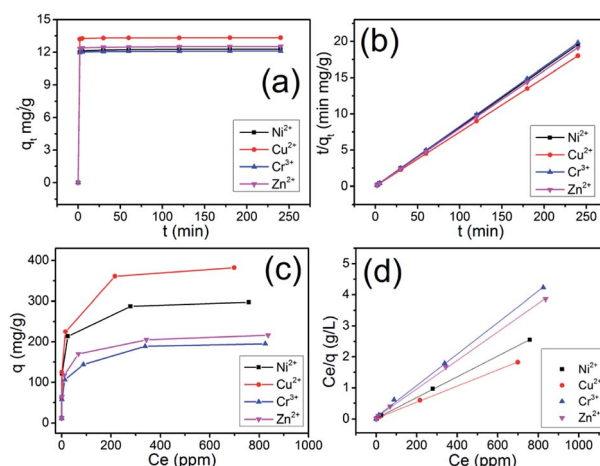


Fig. 3 Adsorption kinetics curves and sorption isotherms for M^{2+} ($\text{M}^{2+} = \text{Ni}^{2+}$, Cu^{2+} , Cr^{3+} , Zn^{2+}) by CHIFA: (a) sorption capacity (q_t) with time, (b) pseudo-second-order kinetic plots for sorption, Langmuir equilibrium isotherms were derived from equilibrium concentration (C_e , ppm), plotted against the adsorption capacity (c) q (mg g^{-1}) and (d) C_e/q_e (g L^{-1}).

S2†). Within 30 min, the CHIFA achieved $\geq 99\%$ removal rates and K_d values of $>10^5$ mL g^{-1} for Ni^{2+} (Table S1†) and for Cu^{2+} (Table S2†). For the Cr^{3+} and Zn^{2+} ions (Tables S3 and S4†), the adsorption is slightly slow but still has a 98.35% and 98.66% removal rate in 30 min, respectively. The adsorptions for all of the four ions reach equilibrium within ~ 2 min (Fig. 3a), which is more efficient than that of the previously reported indole-based aerogel.²³

The removal rate can be determined in two different ways: pseudo-first-order and pseudo-second-order mechanisms, which were defined as follows:²⁷

$$\text{Pseudo-first-order: } \ln(q_e - q_t) = \ln q_e - k_1 t \quad (1)$$

$$\text{Pseudo-second-order: } \frac{t}{q_t} = \frac{1}{k_2 q_e^2} + \frac{t}{q_e} \quad (2)$$

where q_e (mg g^{-1}) is the adsorbed amount per unit mass of adsorbent at equilibrium and q_t (mg g^{-1}) is the adsorbed mass at time t , while k_1 (min^{-1}) and k_2 (g mg $^{-1}$ min $^{-1}$) are corresponding equilibrium rate constants. The k_1 value was obtained by plotting $\ln(q_e - q_t)$ against t and the k_2 by plotting t/q_t against t . The linear relationship of t/q_t versus t was presented in Fig. 3b. From the kinetic parameters of Ni^{2+} , Cu^{2+} , Cr^{3+} and Zn^{2+} (Table S5†), the calculated sorption capacities ($q_{e,cal}$) derived from the pseudo-second-order model are quite close to corresponding experimental values ($q_{e,exp}$). The fit coefficient (R_2) of 1 indicates the adsorption is well fitted with the pseudo-second-order kinetic model, suggesting a chemisorption process.²⁸

Uptake capacity toward Ni^{2+} , Cu^{2+} , Cr^{3+} and Zn^{2+} by CHIFA from aqueous solutions was studied with the batch method at room temperature. The maximum adsorption capacity of the material was determined from an adsorption equilibrium study. The Ni^{2+} capture by CHIFA was found to increase successively with increasing concentration (10–1000 ppm, Table S6†). Over a wide range of the initial concentration (10–100 ppm), the Ni^{2+} removal rates reached values of $>98\%$, with the K_d^{Ni} values ranging from 6.2×10^4 to 8.8×10^6 mL g^{-1} . The maximum removal capacity (q_m) for Ni^{2+} reached ~ 297.5 mg g^{-1} , which is higher than that of the previously reported indole-based aerogel.²³ In addition, this is an exceptionally high capacity competing with those of the best absorbers such as PMCNa hybrid hydrogels (224 mg g^{-1})²⁹ and polyvinyl alcohol/corn starch hydrogel,³⁰ for which adsorption capacities of various adsorbents are shown in Table S11.†

We also checked the adsorption of the CHIFA material for Cu^{2+} in the range of concentrations 10 ppm to 1000 ppm (Table S7†), and found that there are $>99\%$ removal rates in the initial concentration (10–100 ppm), and ~ 382.5 mg g^{-1} maximum adsorption capacity, which is higher than that of the previously reported indole-based aerogel.²³ In addition, this value is still very high compared to reported adsorbents (Table S11†). For Cr^{3+} and Zn^{2+} , the maximum adsorption capacity is found to be relatively lower at ~ 195.0 mg g^{-1} and 216.3 mg g^{-1} (Tables S8, and S9†), which is higher than that of the previously reported indole-based aerogel,²³ however those value is still very high compared to reported adsorbents (Table S11†). In comparison to the reported materials as shown in Table S11,† the present

CHIFA demonstrates superior removal capacities for the target ions, which is attributed to the function of the introduced hydroxyl, carboxyl and indole groups in the sample, which is very helpful for the synergistic effects of face–point and point–point interactions between the CHIFA network and heavy metals.

A Langmuir isotherm is used to describe the experimental data of Ni^{2+} , Cu^{2+} , Cr^{3+} and Zn^{2+} . In this model, the adsorbate moieties (Ni^{2+} , Cu^{2+} , Cr^{3+} , Zn^{2+}) are assumed to undergo monolayer type coverage of the sorbent on an adsorbent surface. Once an adsorption site is occupied, no further adsorption can happen at the same site. The Langmuir isotherm model is listed as equation:

$$q = q_m \frac{bC_e}{1 + bC_e} \quad (3)$$

where q (mg g^{-1}) is the equilibrium adsorption capacity of Ni^{2+} , Cu^{2+} , Cr^{3+} and Zn^{2+} adsorbed, C_e (mg L^{-1}) is the Ni^{2+} , Cu^{2+} , Cr^{3+} and Zn^{2+} concentration at equilibrium, q_m (mg g^{-1}) is the theoretical maximum sorption capacity. The equilibrium adsorption isotherms are shown in Fig. 3c, with the Ni^{2+} , Cu^{2+} , Cr^{3+} and Zn^{2+} equilibrium concentration ranging from 0.0008 to 836 ppm. The experimental data of uptake capacity for Ni^{2+} , Cu^{2+} , Cr^{3+} and Zn^{2+} are fitted well with the Langmuir isotherm model of eqn (3), see Fig. 3d. According to the Langmuir isotherm model, the expected capacity q_m of 298.5 mg g^{-1} for Ni^{2+} , of 383.1 mg g^{-1} for Cu^{2+} , of 196.9 mg g^{-1} for Cr^{3+} and of 217.4 mg g^{-1} for Zn^{2+} , which are consistent with the experimental value of 297.5 mg g^{-1} for Ni^{2+} , of 382.5 mg g^{-1} for Cu^{2+} , of 195.0 mg g^{-1} for Cr^{3+} and of 216.3 mg g^{-1} for Zn^{2+} . The large correlation coefficient ($R^2 > 0.99$) shows a good fit with the Langmuir isotherm, suggesting a monolayer adsorption³¹ on the CHIFA (Table S10†).

The Cu^{2+} adsorption capacity and efficiency in RFA, HIFA and CHIFA aerogels were evaluated by adsorption isotherms measurements. As shown in Fig. S10a,† the RFA, HIFA and CHIFA aerogels exhibits the highest Cu^{2+} sorption capacity of 158, 265 and 361 mg g^{-1} in the initial concentration (10–500 ppm), respectively. As shown in Fig. S10b,† CHIFA is faster to reach equilibrium than HIFA and HIFA is faster to reach equilibrium than RFA with the same initial concentration of 10 ppm.

To identify the interaction between CHIFA samples and heavy metal ions during the adsorption process, FT-IR spectra of the CHIFA before and after Ni^{2+} , Cu^{2+} , Cr^{3+} and Zn^{2+} adsorption are compared (Fig. S10†). To elucidate the adsorption mechanism, the Density Functional Density (DFT)^{32–35} calculations were performed to investigate the interactions between CHIFA and Cu^{2+} , the calculations were detailed in ESI.† The series of snapshots of Cu^{2+} adsorption are shown in Fig. 4. For Cu^{2+} –carboxyl complex, the optimized geometry is obtained when the carboxyl unit and Cu^{2+} forms Cu^{2+} –carboxyl complex through point-to-point interaction, as shown in Fig. 4c, the corresponding energy is 44.86 kJ mol^{-1} (Fig. S12a†). The equilibrium conformation of Cu^{2+} –indole is the electron-deficient Cu^{2+} and the indole ring forming face-to-point cation– π configuration with the distance of 3.12 Å (Fig. S12b†), and the

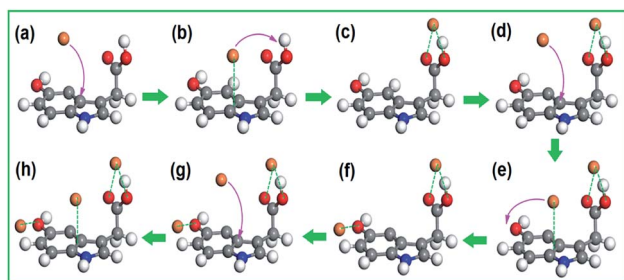


Fig. 4 DFT results to adsorb Cu^{2+} process involving synergistic face-to-point and point-to-point interactions. (a) A Cu^{2+} is adsorbed on the face of a π -electron-rich indole group via the face-to-point interaction. (b) The cation- π structure is obtained. (c) The desorbed Cu^{2+} can be adsorbed by an adjacent carboxyl group through point-to-point interaction. (d) Second Cu^{2+} comes close to the indole ring. (e) The desorbed Cu^{2+} can be adsorbed by the adjacent hydroxyl group through point-to-point interaction. (f) A stable conformation is formed. (g) Third Cu^{2+} comes close to the indole ring. (h) Three Cu^{2+} , CHIFA formed a stable system. The white, gray, blue, and red spheres represent hydrogen, carbon, nitrogen, and oxygen atoms, respectively.

computational binding energy is $32.53 \text{ kJ mol}^{-1}$ (Fig. S12b[†]). Additionally, hydroxyl group can adsorb Cu^{2+} through point-to-point interaction (Fig. S12c[†]). However, adsorbing of mobile Cu^{2+} by carboxyl and hydroxyl units is difficult because of the point-to-point binding area by only two atomistic sites. On the contrary, Cu^{2+} can be easily and rapidly adsorbed on indole ring due to its relatively large binding area through face-to-point cation- π interaction^{23,36} (Fig. 4b). Adsorption and desorption occur simultaneously, driven by thermal fluctuation. Once desorption occurs, the starting speed should be slow down compared with the bulk, leading to a high probability to be adsorbed by an adjacent carboxyl and hydroxyl units. The complexation of Cu^{2+} and carboxyl and hydroxyl, therefore, can be facilitated with the help of an adjacent indole, forming Cu^{2+} -carboxyl and Cu^{2+} -hydroxyl complex more easily and efficiently.

Conclusions

In summary, we have rationally designed a new type of carboxylic-functional indole-based aerogel (CHIFA) that is easily prepared via a facile sol-gel technology involving phenolic resin-inspired chemistry, and we have demonstrated that the aerogel could be used as a high effective extraction material for heavy metals from aqueous solution through the synergistic effects of face-point and point-point interactions between the CHIFA network and heavy metals.

Conflicts of interest

There are no conflicts to declare.

Acknowledgements

This work was financially supported by the National Natural Science Foundation of China (No. 21504073, 21202134, 11447215). We thank the Southwest Computing Center of the

China Academy of Physics Engineering for their support of computer simulation.

Notes and references

- R. P. Schwarzenbach, B. I. Escher, K. Fenner, T. B. Hofstetter, C. A. Johnson, U. V. Gunten and B. Wehrli, *Science*, 2006, **313**, 1072.
- J. O. Nriagu and J. M. Pacyna, *Nature*, 1988, **333**, 134.
- L. Liu, X. Guo, R. Tallon, X. Huang and J. Chen, *Chem. Commun.*, 2017, **53**, 881.
- P. Yang, L. Yang, J. Yang, X. Luo and G. Chang, *High Perform. Polym.*, 2019, **31**, 238.
- L. Wang, D. Hu, X. Kong, J. Liu, X. Li, K. Zhou, H. Zhao and C. Zhou, *Chem. Eng. J.*, 2018, **346**, 38.
- M. R. Awual, I. M. M. Rahman, T. Yaita, M. A. Khaleque and M. Ferdows, *Chem. Eng. J.*, 2014, **236**, 100.
- Y. Shi, T. Zhang, H. Ren, A. Kruse and R. Cui, *Bioresour. Technol.*, 2018, **247**, 370.
- X. J. Hu, J. S. Wang, Y. G. Liu, X. Li, G. M. Zeng, Z. L. Bao, X. X. Zeng and F. Long, *J. Hazard. Mater.*, 2011, **185**, 306.
- R. Zarrougui, R. Mdimagh and N. Raouafi, *J. Hazard. Mater.*, 2018, **342**, 464.
- T. Saito, S. Brown, S. Chatterjee, J. Kim, C. Tsouris, R. T. Mayes, L. J. Kuo, G. Gill, Y. Oyola and C. J. Janke, *J. Mater. Chem. A*, 2014, **2**, 14674.
- L. S. Oliveira, A. S. Franca, T. M. Alves and S. D. Rocha, *J. Hazard. Mater.*, 2008, **155**, 507.
- M. Kasanmascheff, W. Lee, T. U. Nick, J. A. Stubbe and M. Bennati, *Chem. Sci.*, 2016, **7**, 2170.
- A. Ma, A. Abushaikh, S. J. Allen and G. McKay, *Chem. Eng. J.*, 2019, **358**, 1.
- I. K. Moideen, A. M. Isloor, A. A. Qaiser, A. F. Ismail and M. S. Abdullah, *Korean J. Chem. Eng.*, 2018, **35**, 1281.
- G. Zhao, X. Huang, Z. Tang, Q. Huang, F. Niu and X. Wang, *Polym. Chem.*, 2018, **9**, 3562.
- H. Chen, J. Lin, N. Zhang, L. Chen, S. Zhong, Y. Wang, W. Zhang and Q. Ling, *J. Hazard. Mater.*, 2018, **345**, 1.
- B. Aguila, Q. Sun, J. A. Perman, L. D. Earl, C. W. Abney, R. Elzein, R. Schlaf and S. Ma, *Adv. Mater.*, 2017, **29**, 1700665.
- B. Hayati, A. Maleki, F. Najafi, H. Daraei, F. Gharibi and G. McKay, *J. Hazard. Mater.*, 2017, **336**, 146.
- K. Kadirvelu, J. Goel and C. Rajagopal, *J. Hazard. Mater.*, 2008, **153**, 502.
- P. Rana, N. Mohan and C. Rajagopal, *Water Res.*, 2004, **38**, 2811.
- A. K. Meena, G. Mishra, P. Rai, C. Rajagopal and P. Nagar, *J. Hazard. Mater.*, 2005, **122**, 161.
- S. M. Alatalo, F. Pileidis, E. Mäkilä, M. Sevilla, E. Repo, J. Salonen, M. Sillanpää and M.-M. Titirici, *ACS Appl. Mater. Interfaces*, 2015, **7**, 25875.
- P. Yang, L. Yang, Y. Wang, L. Song, J. Yang and G. Chang, *J. Mater. Chem. A*, 2019, **7**, 531.
- O. Czakkel, K. Marthi, E. Geissler and K. László, *Microporous Mesoporous Mater.*, 2005, **86**, 124.
- G. Leofanti, M. Padovan, G. Tozzola and B. Venturelli, *Catal. Today*, 1998, **90**, 207.

- 26 X. Zhu, S. M. Mahurin, S. H. An, C. L. Dothanh, C. Tian, Y. Li, L. W. Gill, E. W. Hagaman, Z. Bian and J. H. Zhou, *Chem. Commun.*, 2014, **50**, 7933.
- 27 S. Azizian, *J. Colloid Interface Sci.*, 2004, **276**, 47.
- 28 T. Liu, M. Yang, T. Wang and Q. Yuan, *Ind. Eng. Chem. Res.*, 2012, **51**, 454.
- 29 P. Spasojevic, V. Panic, M. Jovic, J. Markovic, C. van Roost, I. Popovic and S. Velickovic, *J. Mater. Chem. A*, 2016, **4**, 1680.
- 30 M. N. K. Chowdhury, A. F. Ismail, M. D. H. Beg, G. Hegde and R. J. Gohari, *New J. Chem.*, 2015, **39**, 5823.
- 31 A. Farrukh, A. Akram, A. Ghaffar, S. Hanif, A. Hamid, H. Duran and B. Yameen, *ACS Appl. Mater. Interfaces*, 2013, **5**, 3784.
- 32 G. Chang, Z. Shang, Y. Tao and L. Yang, *J. Mater. Chem. A*, 2016, **4**, 2517.
- 33 W. Wei, G. Chang, Y. Xu and L. Yang, *J. Mater. Chem. A*, 2018, **6**, 18794.
- 34 K. Wang, L. Yang, W. Wei, L. Zhang and G. Chang, *J. Membr. Sci.*, 2018, **549**, 23.
- 35 Y. Li, L. Yang, M. Du and G. Chang, *Analyst*, 2019, **144**, 1260.
- 36 G. Chang, Y. Wang, C. Wang, Y. Li, Y. Xu and L. Yang, *Chem. Commun.*, 2018, **54**, 9785.