

RESEARCH ARTICLE

Open Access



# Molecular cloning and characterization of a novel peptidase from *Trichinella spiralis* and protective immunity elicited by the peptidase in BALB/c mice

Jun Jun Lei, Yuan Yuan Hu, Fang Liu, Shu Wei Yan, Ruo Dan Liu, Shao Rong Long, Peng Jiang, Jing Cui\*<sup>1</sup> and Zhong Quan Wang\*

## Abstract

In our previous studies, a novel *T. spiralis* peptidase (TsP) was identified among the excretory/secretory (ES) proteins of *T. spiralis* intestinal infective larvae (IIL) and *T. spiralis* at the adult worm (AW) stage using immunoproteomics, but the biological function of TsP in the life cycle of *T. spiralis* is not clear. The objective of this study was to investigate the biological properties and functions of TsP in larval intrusion and protective immunity induced by immunization with rTsP. The complete TsP cDNA sequence was cloned and expressed. The results of RT-PCR, indirect immunofluorescence assay (IIFA) and western blotting revealed that TsP is a surface and secretory protein expressed in *T. spiralis* at different stages (muscle larvae, IIL, AWs and newborn larvae) that is principally localized at the epicuticle of the nematode. rTsP facilitated the larval intrusion of intestinal epithelial cells (IECs) and intestinal mucosa, whereas anti-rTsP antibodies suppressed larval intrusion; these facilitative and suppressive roles were dose-dependently related to rTsP or anti-rTsP antibodies. Immunization of mice with rTsP triggered an obvious humoral immune response (high levels of IgG, IgG1/IgG2a, and sIgA) and also elicited systemic (spleen) and intestinal local mucosal (mesenteric lymph node) cellular immune responses, as demonstrated by an evident increase in the cytokines IFN- $\gamma$  and IL-4. Immunization of mice with rTsP reduced the numbers of intestinal adult worms by 38.6% and muscle larvae by 41.93%. These results demonstrate that TsP plays a vital role in the intrusion, development and survival of *T. spiralis* in hosts and is a promising candidate target molecule for anti-*Trichinella* vaccines.

**Keywords:** *Trichinella spiralis*, peptidase, intrusion, intestinal epithelial cells (IECs), protective immunity

## Introduction

*Trichinella spiralis* is an important foodborne nematode that parasitizes over 150 kinds of mammals worldwide [1]. Human *T. spiralis* infection is mainly caused by the ingestion of raw or undercooked meat infected with infectious encapsulated muscle larvae (ML). Pork- and pork-derived products from domestic pigs are major

infectious sources of human trichinellosis in China [2, 3]. From 2004–2009, 12 trichinellosis outbreaks resulting from infected pork were documented in mainland China [4]. Because of the wide distribution of the natural animal hosts of *T. spiralis*, it is difficult to eliminate *T. spiralis* infection in food animals [5]. *Trichinella spiralis* infection causes enormous harm to human health and has become a serious threat to meat food safety [6, 7]. Hence, the need to develop vaccines to eradicate *Trichinella* infective larvae in food animals is imperative [8].

\*Correspondence: cuijj@zzu.edu.cn; wangzq2015@126.com  
Department of Parasitology, Medical College, Zhengzhou University, Zhengzhou 450052, China



After infected meat is eaten, *T. spiralis* ML in muscle tissues are released from their collagen capsules with the help of gastric fluid digestion and activated to intestinal infective larvae (IIL) following exposure to the intestinal contents/bile [9]. These IIL larvae invade the intestinal mucosal columnar epithelium and develop to the adult worm (AW) stage after four moults. Females at the AW stage give birth to newborn larvae (NBL), which enter the blood system, penetrate the skeletal muscles and grow to become ML, completing the life cycle [10]. The intestinal epithelium is the primary native defence against *Trichinella* invasion and the principal site of interaction between IIL and the host [11, 12]. However, the mechanism of intestinal epithelium invasion by *Trichinella* worms has remained unclear. Characterization of molecules involved in *Trichinella* invasion will assist in elucidating the mechanism by which *T. spiralis* and its host interact and developing vaccines to inhibit *Trichinella* infection in animals [13, 14].

During *T. spiralis* infection, IIL excretory/secretory (ES) proteins are in contact with the host's intestinal epithelial cells (IECs) and might have a major effect on IEC invasion [15, 16]. When IIL were cultivated with an IEC monolayer, the IIL penetrated the monolayer and produced some serine proteases that passed into the IECs [17, 18]. Moreover, diverse serine proteases have been identified among ES or surface proteins of *T. spiralis* worms at various stages using proteomics/immunoproteomics [19–22]. Additionally, the expression level of serine proteases in IIL was obviously higher than that in the ML [23]. These results suggest that serine proteases might participate in and promote invasion of the intestinal mucosal epithelium by IIL and intestinal infection [24]. Thus, serine proteases might be promising target molecules for a vaccine against intestinal *T. spiralis* infection [25–27].

All of the serine proteases and peptidase S1A subfamilies belong to the peptidase S1 family, the members of which have hydrolase and serine protease activities. Most members of the peptidase family are trypsin-like serine proteases based on their substrate specificity [28]. In previous studies, a novel *T. spiralis* peptidase from the S1A subfamily (TsP; GenBank: XM\_003379300.1) was identified among the ES proteins of *T. spiralis* at the IIL and AW stages using immunoproteomics [29, 30], but its biological function in the life cycle of *T. spiralis* is not clear. The aims of the present study were to investigate the biological properties of TsP, to assess its roles in *T. spiralis* invasion and development and to evaluate protective immunity induced by immunization with rTsP.

## Materials and methods

### Worms and experimental animals

*Trichinella spiralis* worms (ISS534) were acquired from a domestic pig in central China [31] and maintained in our laboratory by serial passage in BALB/c mice. Four to 6-week-old female BALB/c mice were purchased from the Henan Experimental Animal Center (Zhengzhou, China).

### Antigen preparation

ML were acquired by the artificial digestion of infected murine skeletal muscles at 40 days post-infection (dpi) [3]. IIL and AWs were collected from the small intestine of infected mice at 6 and 24 hpi and 3 and 6 dpi. Female AWs at 6 dpi were cultivated in RPMI-1640 medium with 10% foetal bovine serum (FBS; Gibco, Thermo Fisher Scientific, Waltham, MA, USA) at 37 °C in 5% CO<sub>2</sub> for 72 h, and the NBL were collected as previously described [32, 33]. Soluble crude somatic proteins and ES proteins from *T. spiralis* at diverse stages (ML, IIL, AWs and NBL) were prepared as reported before [34].

### Bioinformatics analysis of TsP

The full-length TsP gene cDNA sequence was retrieved from GenBank (GenBank: XP\_003379348.1). The physicochemical characteristics of TsP were predicted through bioanalytical software and websites. The presence of signal peptides in TsP and subcellular localization of TsP were analysed as described previously [35]. The tertiary structure of TsP was predicted with PyMOL software (DeLano Scientific LLC, San Carlos, CA, USA), and its functional sites were analysed using CN3D software (NCBI, Bethesda, MD, USA) [14]. The amino acid sequence of the TsP gene was compared with that of peptidase from other organisms with Clustal X; the GenBank accession numbers of the peptidases from other organisms used for this comparison were as follows: *Trichinella nelsoni* (KRX23647.1), *T. nativa* (KRZ55862.1), *T. britovi* (KRX45325.1), *Trichinella* sp. T9 (KRX64877.1), *T. patagoniensis* (KRY21930.1), *Trichinella* sp. T6 (KRX75765.1), *T. murrelli* (KRX45325.1), *T. papuae* (KRZ76774.1), *Mus musculus* (AAA50168.1) and *Homo sapiens* (CAE48420.1). Phylogenetic analysis was performed using MEGA 7.0 based on the neighbour-joining (NJ) method as reported before [36].

### Cloning, expression and identification of TsP

Total RNA was extracted from the ML using TRIzol (Invitrogen, Carlsbad, CA, USA). The full-length cDNA sequence of the TsP gene was amplified by PCR using the following specific primers carrying the restriction

enzyme sites BamHI and HindIII (**bold**) (5'-ACGGA TCCATGGAAATTTATCAGCTGAG-3' and 5'-GCG AAGCTTTTCAGCTTGGCAGATATTTAT-3'). The PCR product was cloned into the expression vector pQE-80L, and the recombinant pQE-80L/TsP plasmid was transformed into *Escherichia coli* BL21 (DE3) (Novagen, La Jolla, CA, USA). rTsP expression was induced by incubation with 0.8 mM IPTG at 30 °C for 6 h [37], and rTsP was purified with Ni-NTA Sefinose resin (Sangon Biotech Co., Shanghai, China) [38]. The rTsP protein concentration was ascertained, and the rTsP was analysed by SDS-PAGE and western blotting as previously described [22].

#### Immunization of mice and ELISA-mediated determination of anti-rTsP antibodies

Ninety mice were randomly divided into 3 groups (30 mice per group). Each mouse was subcutaneously injected with 20 µg of rTsP emulsified with the adjuvant ISA 201 (Seppic, Paris, France) and boosted three times with rTsP with ISA 201 at a 2-week interval. Control mice received only ISA 201 or PBS alone at the same times mice in the experimental group were vaccinated [39]. 100 µL of tail blood was collected from each mouse at weeks 0, 2, 4, 6 and 8 after vaccination, and serum samples were isolated and stored at -80 °C until use [40].

Specific anti-rTsP IgG and IgG1/IgG2a antibodies in all vaccinated mice were measured by conventional ELISA with rTsP as the coating antigen [41]. In brief, plates were coated with 2 µg/mL rTsP and incubated at 4 °C overnight. After washing with PBST, the plates were blocked with 5% skimmed milk at 37 °C for 2 h. After washing with PBST, the plates were incubated at 37 °C for 2 h with 1:100 dilutions of murine immune sera, followed by incubation with HRP-labelled anti-mouse IgG (IgG1/IgG2a; 1:5000 dilution; Sigma-Aldrich, St. Louis, MO, USA) at 37 °C for 1 h. The signal was developed using OPD (Sigma-Aldrich) plus H<sub>2</sub>O<sub>2</sub>, and the reaction was terminated by the addition of 2 M H<sub>2</sub>SO<sub>4</sub>. The absorbance (optical density, OD) at 492 nm was assayed using a microplate reader (Tecan, Schweiz, Switzerland) [34, 38].

#### RT-PCR analysis of TsP transcription in *T. spiralis* at various stages

Total RNA was extracted from ML, IIL, 3-day-old AWs, 6-day-old AWs and NBL using TRIzol reagent (Invitrogen). RT-PCR was performed to assess the TsP transcription levels in *T. spiralis* at various stages as previously reported [27]. An internal control gene (GAPDH) from

*T. spiralis* (GenBank: AF452239) was also amplified. PBS was used as a negative control in all PCR experiments.

#### Indirect immunofluorescence assay (IIFA)

Fresh intact *T. spiralis* at various stages (ML, IIL, AWs and NBL) were fixed in cold acetone for 20 min. Then, the ML, IIL and AWs were embedded in paraffin, and 3-µm-thick cross-sections of the worms were cut with a microtome. The expression and localization of native TsP in *T. spiralis* at various stages were observed using IIFA [42, 43]. Briefly, whole worms and worm cross-sections were blocked with 5% goat serum and then probed using different sera (1:10; anti-rTsP serum, infection serum or pre-immune serum) at 37 °C for 2 h. Following washes with PBS, worms and worm cross-sections were incubated with FITC-anti-mouse IgG conjugate (1:100; Santa Cruz, Dallas, Texas, USA). After washing with PBS again, the complete worms and worm cross-sections were observed under a fluorescence microscope (Olympus, Tokyo, Japan) [44, 45].

#### IIFA of the binding of rTsP with the enteral epithelium

The small intestine, liver and lung were collected from normal mice, and the tissues were fixed in 4% formaldehyde. Tissue section (3 µm) were cut with a microtome. IIFA was conducted as described previously [46]. Briefly, the sections were incubated with 20 µg rTsP for 2 h at 37 °C. After blocking and washing, the sections were probed with 1:10 dilutions of anti-rTsP serum, infection serum or pre-immune serum for 2 h at 37 °C and then stained using FITC-labelled anti-mouse IgG conjugate diluted 1:100 (Santa Cruz). The sections were re-stained for 5 min with 4',6-diamidino-2-phenylindole (DAPI) [47]. Finally, the sections were observed under a fluorescence microscope (Olympus) [48].

#### Detection of rTsP and IEC binding by IIFA

The binding of rTsP and IECs and the cellular location of rTsP were assessed by IIFA and confocal microscopy [11, 49]. IECs in DMEM were cultured on a coverslip in a 6-well plate [50]. The IEC monolayer was pre-incubated with 20 µg/mL rTsP at 37 °C for 2 h and blocked with 10% goat serum for 1 h. After washing with PBS, the monolayer was incubated with anti-rTsP serum (1:10) at 37 °C for 1 h. After washing again, the cells were stained at 37 °C for 1 h using FITC-conjugated anti-mouse IgG (1:100, Santa Cruz), and the cell nuclei were re-stained with DAPI for 5 min and observed with fluorescence microscopy (Olympus). Finally, the cellular localization of TsP in IECs was ascertained by confocal microscopy [27].

### Far-western blot identification of the binding between rTsP and IEC proteins

The binding of rTsP with IEC proteins was examined by far-western blotting. Briefly, IEC lysates were separated by SDS-PAGE with a 12% separating gel. The proteins were transferred onto a nitrocellulose membrane, which was cut into strips, blocked, incubated with rTsP and probed with anti-rTsP serum. After washing with PBST, the strips were incubated with HRP-conjugated anti-mouse IgG (1:5000, Sigma-Aldrich). After washing, the signal was developed using 3,3'-diaminobenzidine tetrahydrochloride (DAB; Sigma-Aldrich,) [51].

### In vitro larval invasion of IECs

To investigate the role of TsP in *T. spiralis* invasion of the intestinal epithelium, an in vitro larval invasion test was conducted as previously described [52, 53]. Briefly, ML were first activated into IIL by using 5% swine bile at 37 °C for 2 h, and 100 IIL were added to an IEC monolayer [54]. The culture medium had been supplemented with serial diluted rTsP protein (2.5, 5.0, 7.5, 12.5 and 15.0 µg/mL) or serial dilutions (1:100–1:1000) of anti-rTsP serum, infection serum or pre-immune serum. After culture at 37 °C for 2 h, larval invasion of the monolayer was examined under a microscope. The IIL that penetrated the IEC monolayer and migrated were assessed as invaded larvae, whereas the larvae that remained on the IEC surface and exhibited a spiral coil-like shape were considered non-penetrated worms [43]. Each test was performed in triplicate.

### rTsP-mediated promotion and anti-rTsP serum-mediated inhibition of larval invasion of the excised intestine

The role of rTsP in larval invasion of the enteral mucosa was also evaluated using the excised mouse small intestine as previously reported [49]. Two hundred IIL were first mixed with anti-rTsP serum diluted 1:100–1:1000 and 0–15 µg/mL rTsP or BSA. The intestines were collected from normal mice, washed with sterilized Tyrode's solution, and then cut into 2 cm-long segments. The two enteral ends were ligated to form an intestinal pouch, and the IIL were injected into the enteral lumen and kept in sterilized Tyrode's solution for 2 h at 37 °C. Each test was performed in triplicate, and the numbers of larvae that retained in the enteral lumen were assessed as non-invaded worms.

### Assessment of enteral total IgA and TsP-specific sIgA levels

To ascertain total and TsP-specific secretory IgA (sIgA) levels in the intestinal fluid, intestinal eluent was prepared as reported before [55, 56]. Briefly, a 20-cm-long intestinal segment was cut, and the enteral interior was

washed three times using 1 mL of cold PBS with 1% protease inhibitor (Sangon Biotech, Shanghai, China). The eluents were collected and centrifuged at  $5000 \times g$  for 5 min, and the supernatants were harvested [26]. Total intestinal sIgA levels were determined using sandwich ELISA as previously described [44]. TsP-specific sIgA was detected by ELISA using 2 µg/ml soluble antigens from ML or rTsP as coating antigens [57]. The signal was developed with OPD, and the absorbance at 492 nm was assayed as described previously [40].

### ELISA to determine the TsP-specific cytokine response

To assess TsP-specific cellular immune responses, five immunized mice from each group were killed at weeks 0 and 8 post-immunization. Murine spleens and mesenteric lymph nodes (MLNs) were harvested and homogenized in complete RPMI-1640 medium (Gibco, Auckland, New Zealand), the pellets after centrifugation at  $1500 \times g$  for 10 min were collected, and the cells were isolated as previously described [56, 58]. The cell density was adjusted to  $2 \times 10^6$  cells/mL in RPMI-1640 medium with 5% FBS, penicillin (100 U/mL) and streptomycin (100 µg/mL). The cells were stimulated using 4 µg/mL rTsP for 72 h at 37 °C and 5% CO<sub>2</sub>. The supernatant was collected, and the levels of two cytokines (IFN-γ and IL-4) were determined with sandwich ELISA [40]. Cytokine concentrations are shown as picograms per millilitre (pg/ml).

### Larval challenge and evaluation of immune protection

To evaluate the immune protection induced by rTsP immunization, each immunized mouse was challenged using 300 *T. spiralis* ML at 2 weeks after the last immunization. The AWs were collected from the small intestines of ten immunized mice from each group at 6 dpi. The ML were obtained by the artificial digestion of skeletal muscle from the remaining ten immunized mice from each group at 30 dpi. The immune-protective efficacy of rTsP immunization was evaluated as the reduction in intestinal AWs and muscle larvae per gram (LPG) of immunized mice and compared to the number of intestinal AWs and muscle LPG in the PBS group [59, 60].

### Histological examination of intestines and muscles from infected mice

On 6 and 30 dpi, the gut and masseter muscles were cut from infected mice, fixed in 4% formalin for 24 h and embedded in paraffin. Tissue sections (3-µm thick) were prepared, deparaffinized and stained using haematoxylin and eosin (HE) staining. The sections were examined under microscopy, and the inflammatory cells (eosinophils, neutrophils and lymphocytes) per field ( $\times 200$ ) were counted as previously described [56, 61].



## Statistical analysis

All the data were statistically analysed with SPSS for Windows, version 20.0. The data are shown as the mean  $\pm$  standard deviation (SD). Differences among different groups were analysed by a Chi square test or one-way ANOVA. Correlation analysis was used to assess the relationship between larval invasion and the dilution of rTsP/anti-rTsP serum. Differences for which  $P < 0.05$  were considered statistically significant differences.

## Results

### Bioinformatics analysis of TsP

The full-length TsP cDNA sequence is 780 bp long and encodes 259 aa, and the encoded protein has a molecular weight (MW) of 28.7 kDa and isoelectric point (pI) of 8.32. TsP has no signal peptide, and TMHMM prediction showed that TsP has no transmembrane domain but does have a functional domain named Tryp\_SpC located from aa 21–247. The results of homology comparison of the TsP amino acid sequence with the amino acid sequences of peptidases from other *Trichinella* species or genotypes are shown in Additional file 1. The amino acid sequence of TsP exhibited identities of 86.67, 83.40, 83.02, 82.26, 81.51, 80.90 and 80.38% with peptidases from 7 encapsulated *Trichinella* species (*T. nelsoni*, *T. nativa*, *T. britovi*, T9, *T. patagoniensis*, T6 and *T. murrelli*) and an identity of 74.25% with the peptidase from a non-encapsulated *Trichinella* species (*T. papuae*).

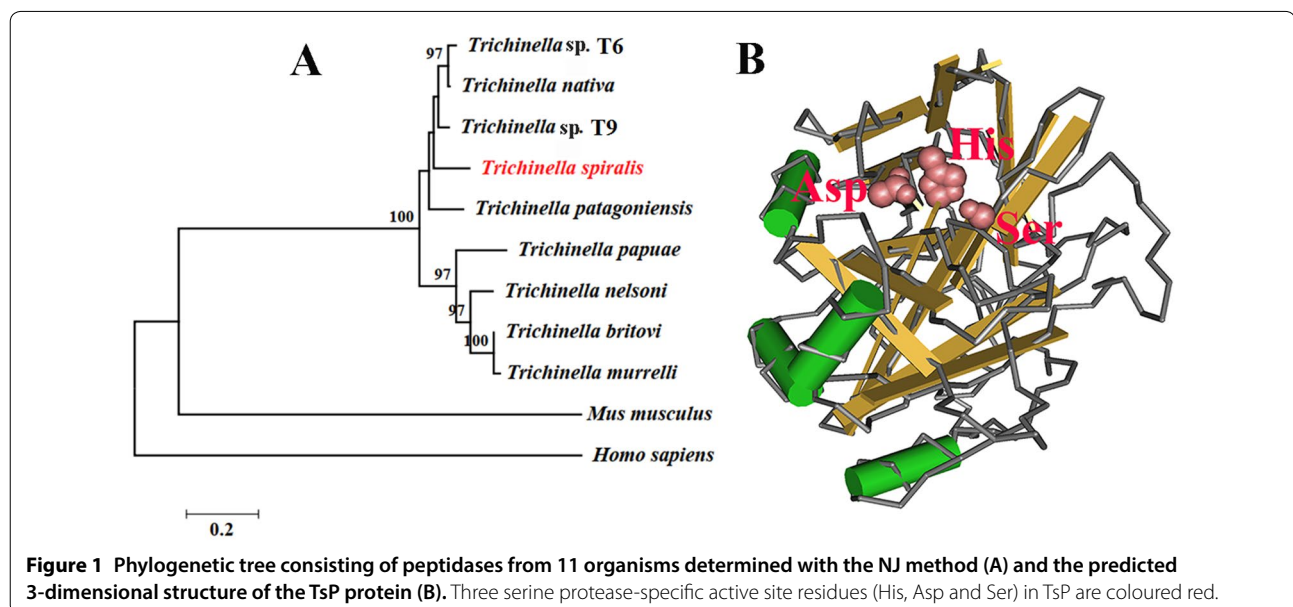
The result of phylogenetic analysis of TsP and peptidases from other *Trichinella* species or genotypes is shown in Figure 1A. The phylogenetic tree strongly

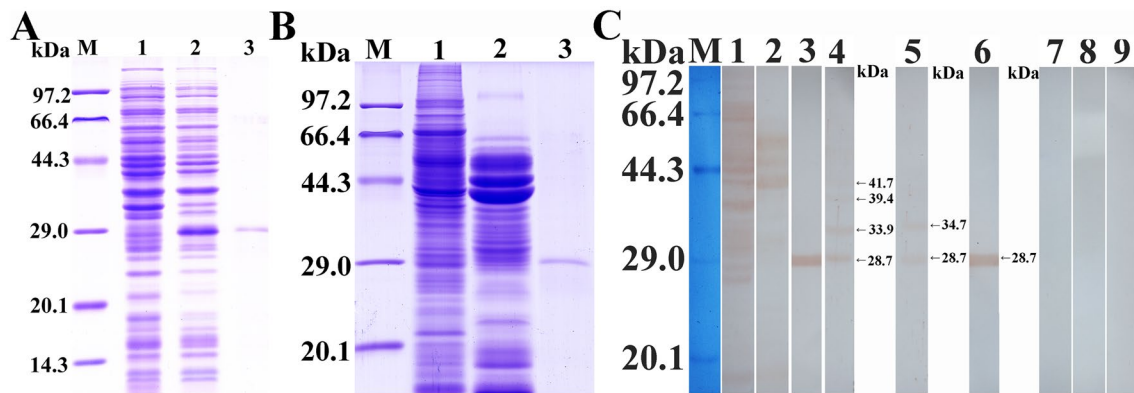
supports the presence of a monophyletic group consisting of the genus *Trichinella*. Within the genus *Trichinella*, *T. spiralis* has a closer evolutionary relationship with the encapsulated *T. nativa*, *Trichinella* sp. T6 and T9 genotypes, as shown based on the phylogenetic analysis of their peptidases. Structure prediction showed that TsP has 4  $\alpha$ -helices, 16  $\beta$ -strands, and a domain (between aa 21 and 247) with trypsin-like serine protease activity and an active site carrying the classic catalytic triad. In the three-dimensional model, the catalytic triad serine–histidine–aspartate forms a functional domain with substrate-binding sites (Figure 1B).

### SDS-PAGE and western blotting identification of the rTsP protein

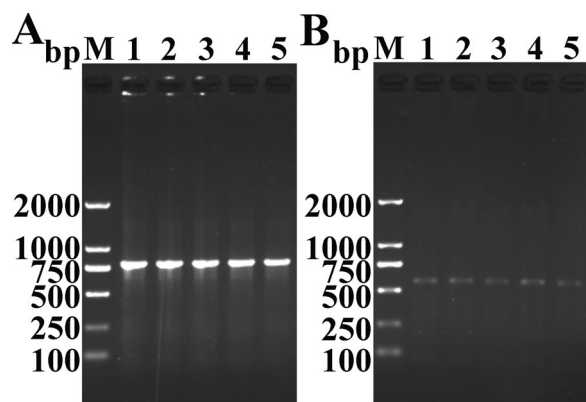
SDS-PAGE showed that recombinant BL21 bacteria carrying PQE-80L/TsP expressed a fusion protein 28.7 kDa in size. After purification, rTsP was present as a clear, single protein band (Figure 2A, B). The MW (28.7 kDa) of rTsP determined by SDS-PAGE was identical to its predicted MW (28.7 kDa).

Western blotting showed that soluble and ES proteins and rTsP from ML were recognized by *T. spiralis*-infected serum and anti-rTsP serum but not normal murine serum. Native TsP constructs with MW from 28.7–41.7 kDa were identified among the soluble and ES proteins of *T. spiralis* ML by anti-rTsP serum (Figure 2C), demonstrating that TsP was expressed among ML ES proteins and that TsP is a ML secretory protein.





**Figure 2** SDS-PAGE and western blot analysis of rTsP. **A** SDS-PAGE analysis of lysates of BL21 bacteria transfected with pQE-80L/TsP before and after induction. Lane M: protein marker; lane 1: lysate of BL21 bacteria transfected with pQE-80L/TsP prior to induction; lane 2: lysate of BL21 bacteria transfected with pQE-80L/TsP following induction; lane 3: purified rTsP. **B** SDS-PAGE analysis of rTsP. Lane M: protein marker; lane 1: ML soluble proteins; lane 2: ML ES proteins; lane 3: purified rTsP. **C** Western blot analysis of rTsP antigenicity. ML soluble proteins (lane 1), ML ES proteins (lane 2) and rTsP (lane 3) were identified by *T. spiralis*-infected sera. Native TsP among ML soluble proteins (lane 4) and ES proteins (lane 5), and rTsP (lane 6) was recognized by anti-rTsP serum. ML soluble proteins (lane 7), ES proteins (lane 8), and rTsP (lane 9) were not recognized by normal murine serum.



**Figure 3** RT-PCR analysis of transcription of the TsP (A) and GAPDH (B) genes in *T. spiralis* at diverse stages. Lane M: DNA marker; lane 1: ML; lane 2: IIL; lane 3: 3-day-old AWs; lane 4: 6-day-old AWs; lane 5: NBL.

### TsP mRNA transcription in *T. spiralis* at various stages

The RT-PCR results showed transcription of the TsP gene (780 bp) in *T. spiralis* at various stages of its life cycle (e.g., ML, IIL, 3- and 6-day-old AWs, and NBL) (Figure 3A), and the housekeeping gene (GAPDH) was amplified from *T. spiralis* at all stages and showed the expected size (570 bp) (Figure 3B).

### Expression and location of native TsP in *T. spiralis* at various stages determined by IIFA

The results of IIFA of complete worms revealed upon anti-rTsP serum application, bright green fluorescent

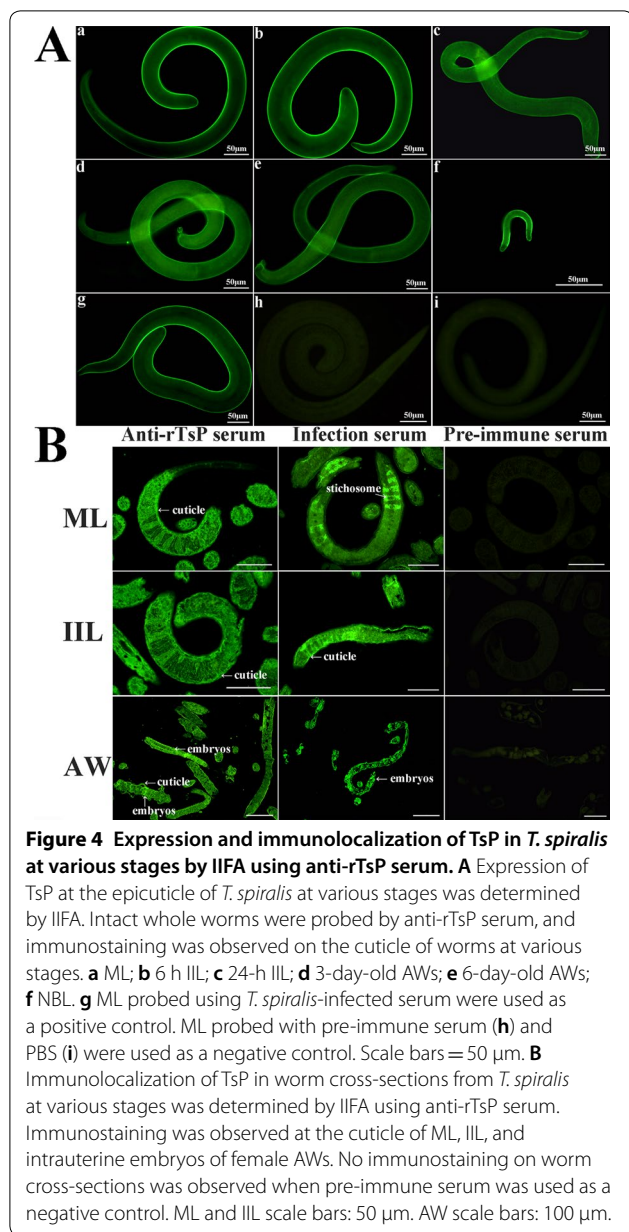
staining was found on the epicuticle of *T. spiralis* at various stages (ML, 6- and 24-h-old IIL, 3- and 6-day-old AWs and NBL) (Figure 4A). When the worm cross-sections were probed by anti-rTsP serum, immunostaining was located at the cuticle and intrauterine embryos of the parasite (Figure 4B). No immunostaining was observed using pre-immune serum.

### Specific binding of rTsP with the enteral epithelium assessed by IIFA

The results of IIFA using enteral, liver and lung sections showed immunostaining of the enteral epithelium after its incubation with rTsP, anti-rTsP serum and infection serum (Figure 5). However, no immunostaining was observed with pre-immune serum. The liver and lung tissue sections incubated with rTsP did not show any detectable staining by anti-rTsP serum or infection serum.

### Binding of rTsP with IECs and the cellular localization of rTsP

The results of IIFA revealed that after the IECs were pre-incubated with rTsP and IIL ES antigens, immunostaining was observed on the surface of IECs probed by anti-rTsP serum and infection serum but not pre-immune serum. The IECs pre-incubated with PBS alone did not show immunostaining. No immunostaining for C2C12 was observed when C2C12 cells pre-incubated with rTsP were probed with anti-rTsP serum or infection serum (Figure 6A). The results of confocal microscopy indicated that immunostaining was primarily located in



the IEC cytoplasm (Figure 6B), demonstrating the specific binding of rTsP with IECs and that the rTsP-binding site is principally localized in the cytoplasm.

**The binding of rTsP and IEC proteins determined by far-western blotting**

After IEC proteins were incubated with rTsP, one band with a MW of 33.6 kDa was recognized by infection serum, and 9 bands with MWs from 23.4 to 46.4 kDa were recognized by anti-rTsP serum. No proteins in IECs pre-incubated with rTsP were identified by pre-immune serum, and no immunostaining for the C2C12 protein

was detected with anti-rTsP serum or infection serum after pre-incubation with rTsP (Figure 7). These results indicated the specific binding of TsP and IEC proteins.

**rTsP-mediated facilitation or anti-rTsP serum-mediated inhibition of the larval invasion of IECs**

After cultivation with the IEC monolayer for 2 h, IIL that invaded the monolayer were examined (Figure 8A–C). When serial dilutions of anti-rTsP serum were used to supplement the culture medium and incubated with IECs for 2 h, anti-rTsP serum (1:100–1:600) obviously inhibited larval invasion compared to that in the pre-immune serum group ( $P < 0.01$ ). The suppressive effect of anti-rTsP antibodies was dose-dependent ( $r = 0.906$ ), and larval invasion declined with increasing serum dilutions ( $F = 254.071, P < 0.0001$ ) (Figure 8D). When the medium was supplemented with rTsP and cultivated with IIL for 2 h, rTsP clearly promoted IEC invasion by IIL. This effect was dependent on the dose of rTsP ( $r = 0.985$ ), and IEC invasion tended to increase with increasing rTsP concentration ( $F = 432.176, P < 0.0001$ ); however, BSA did not play a role in promoting larval invasion (Figure 8E).

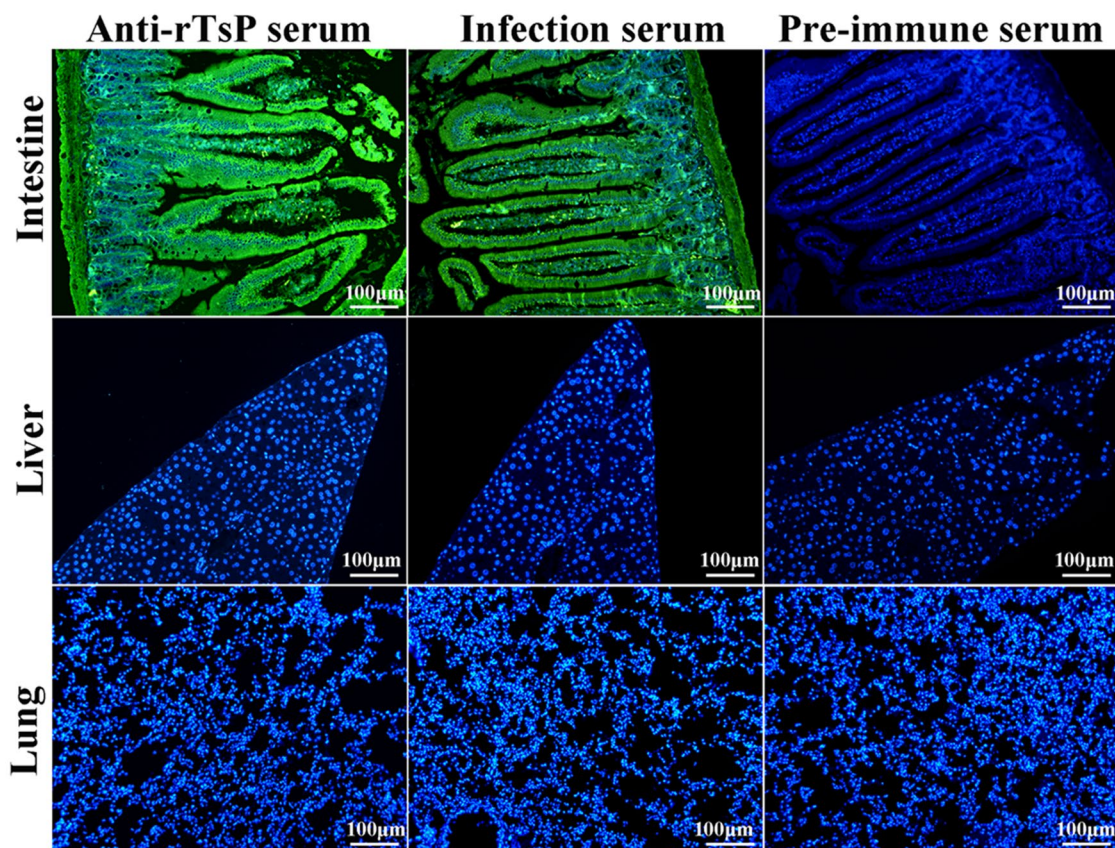
**rTsP-mediated promotion and anti-rTsP serum-mediated suppression of larval invasion of the enteral mucosa**

After they were injected and incubated for 2 h, some IIL invaded the enteral mucosa (Figure 9). When the IIL were pre-incubated with anti-rTsP serum, infection serum, pre-immune serum, rTsP, BSA or PBS, the differences in larval invasion rate among various groups were statistically significant ( $P < 0.01$ ). Anti-rTsP serum (1:200) clearly inhibited parasite invasion of the gut epithelium compared to that upon administration of pre-immune serum ( $\chi^2 = 15.253, P < 0.0001$ ). In contrast, 10  $\mu$ g/ml rTsP clearly promoted larval invasion compared to that in the BSA group ( $\chi^2 = 13.665, P < 0.0001$ ).

**The anti-TsP antibody response to rTsP immunization**

To assess the specific anti-TsP antibody response, rTsP-specific IgG and IgG1/IgG2a in the sera of vaccinated mice were measured using rTsP-ELISA. The serum anti-rTsP IgG antibody level in vaccinated mice was obviously increased following the second vaccination, and anti-rTsP IgG titres at 2 weeks after the last immunization reached  $1:10^5$ , indicating that rTsP was highly immunogenic. However, no mice injected with the adjuvant ISA 201 or PBS alone showed anti-rTsP IgG responses (Figure 10A). The IgG1 levels on weeks 4, 6 and 8 following immunization were distinctly higher than the IgG2a levels ( $t_{4w} = 10.451, t_{6w} = 9.853, t_{8w} = 10.841, P < 0.0001$ ) (Figure 10B, C), indicating that vaccination with rTsP elicited a Th2-predominant mixed Th1/Th2 response.





**Figure 5** IIFA analysis of the binding of rTsP to the normal murine enteral epithelium (100 ×). Tissue sections from the normal murine intestine, liver and lung were first incubated with rTsP at 37 °C for 2 h. After washing, the sections were probed at 37 °C for 1 h with anti-TsP serum, infection serum or pre-immune serum and then stained using anti-mouse IgG-FITC conjugate. DAPI was used to stain the cell nuclei blue. The sections were observed under fluorescence microscopy. Scale bars: 100 µm.

#### An intestinal mucosal sIgA response was elicited by rTsP immunization

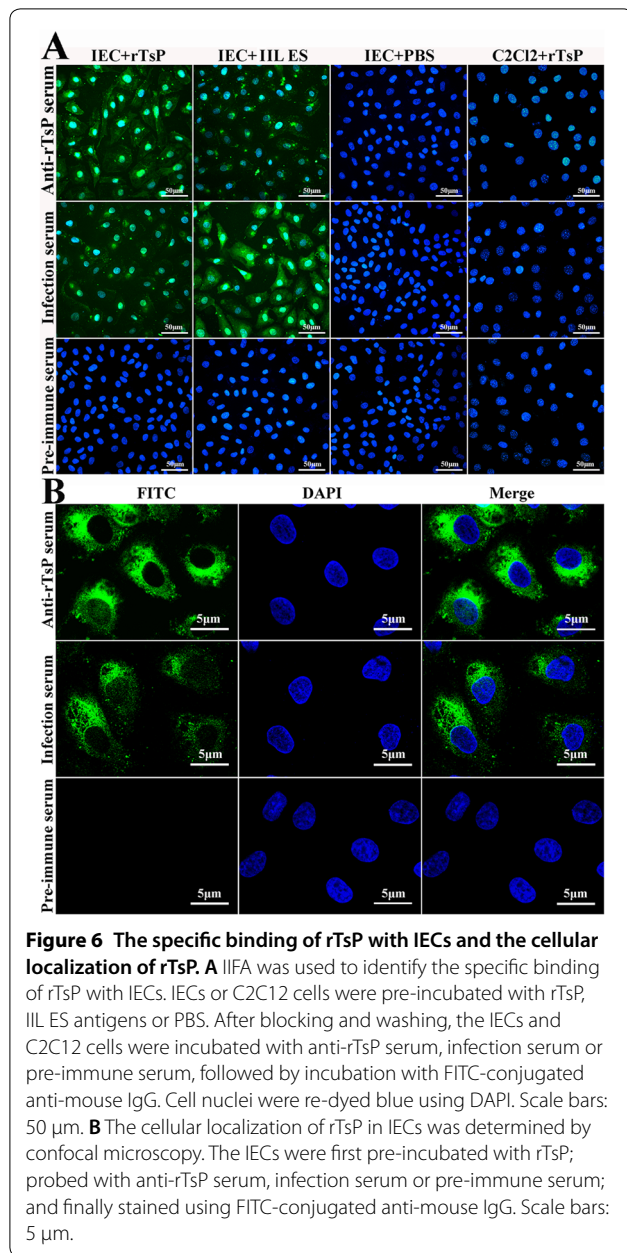
To ascertain the intestinal mucosal sIgA response to rTsP immunization, total sIgA and TsP-specific sIgA levels were measured with ELISA. The results revealed that the total sIgA and TsP-specific sIgA levels among the three groups were not significantly different prior to immunization ( $P > 0.05$ ). However, the total sIgA level at 8 weeks following immunization was clearly higher in mice immunized with rTsP than in mice administered the adjuvant ISA 201 adjuvant or PBS ( $F = 72.421$ ,  $P < 0.0001$ ) (Figure 11A). When crude antigens from the ML and rTsP were used, the specific sIgA level in immunized mice was significantly higher than that in the groups administered adjuvant or PBS ( $F_{ML} = 70.115$ ,  $F_{rTsP} = 64.678$ ;  $P < 0.0001$ ) (Figures 11B, C). No specific intestinal sIgA response was detected in mice injected with only adjuvant or PBS. These results suggest that subcutaneous immunization with rTsP induced both a

systemic antibody response and a local intestinal mucosal sIgA response.

#### Cytokine responses to rTsP immunization

To measure cytokine responses triggered by rTsP immunization, the spleens and MLN cells obtained from immunized mice were cultivated under rTsP stimulation. Supernatants were collected, and cytokine concentrations were measured by sandwich ELISA. The levels of a Th1 cytokine (IFN- $\gamma$ ) and a Th2 cytokine (IL-4) were distinctly elevated at 8 weeks after rTsP immunization compared to those in groups administered the adjuvant ISA 201 or PBS ( $P < 0.001$ ) (Figure 12). Our results indicated that rTsP immunization elicited mixed Th1/Th2 responses according to the level of specific IgG subclasses and cytokines, suggesting that subcutaneous immunization with rTsP induced both systemic (spleen) and local enteral mucosal (MLN) cellular responses.





### Immune protection produced by rTsP immunization

Compared to mice in the PBS group, mice immunized with rTsP exhibited a 38.60% reduction in the number of intestinal AWs at 6 dpi (Figure 13A) and a 41.93% reduction in the number of ML at 30 dpi (Figure 13B) following challenge with 300 infectious *T. spiralis* larvae ( $F_{AW} = 159.895$ ,  $F_{ML} = 132.928$ ,  $P < 0.001$ ). However, the mice injected with only the adjuvant ISA 201 did not show any significant reduction in the AW or ML burden ( $P > 0.05$ ) compared to those in the PBS group. These results indicated that the immunization of mice with

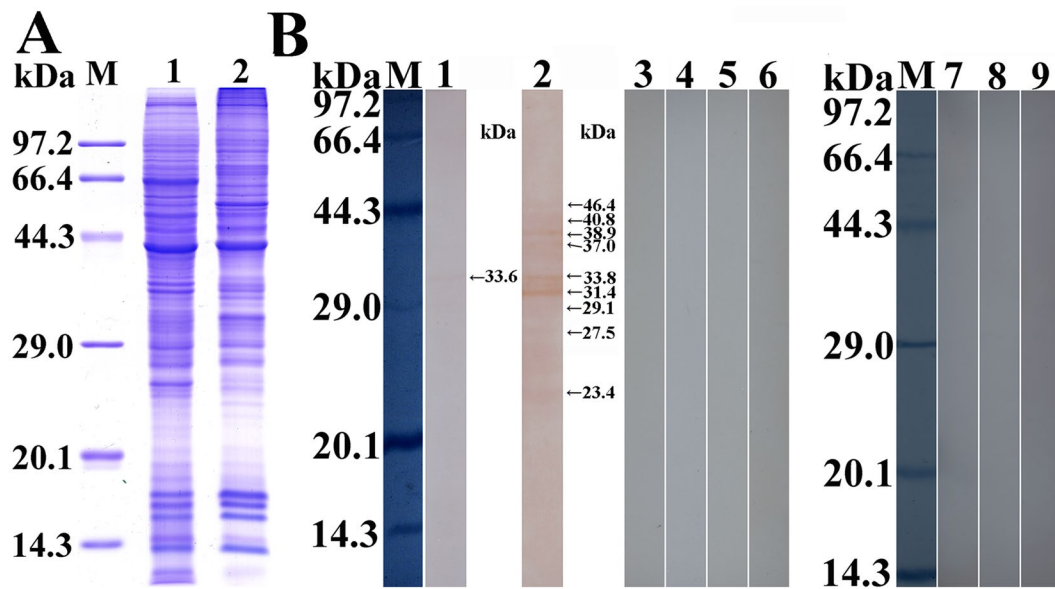
rTsP induced significant immune protection against *T. spiralis* larval challenge.

### Intestinal and muscle histological changes in infected mice

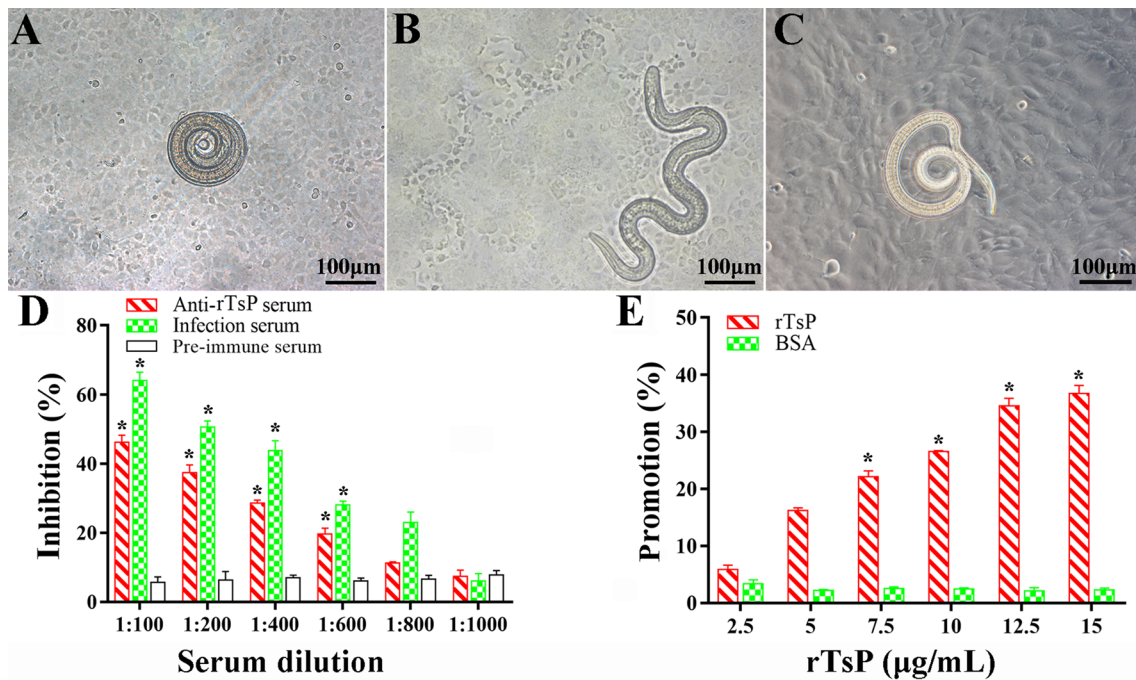
Histological changes of the intestines and masseter muscles of different groups of mice were examined at 6 and 30 dpi. The number of inflammatory cells in the intestinal mucosa of rTsP-immunized mice was obviously higher than that in the mice administered adjuvant or PBS as a control ( $F = 579.160$ ,  $P < 0.0001$ ) (Figure 14), whereas the number of inflammatory cells around encapsulated larvae in the skeletal muscles of rTsP-immunized mice was significantly reduced compared to that in the groups administered adjuvant or PBS as a control ( $F = 1734.315$ ,  $P < 0.0001$ ) (Figure 15). These results suggest that rTsP immunization enhanced intestinal inflammatory cell infiltration in immunized mice, which may accelerate AW expulsion from the gut. Furthermore, rTsP immunization alleviated inflammatory infiltration and relieved *Trichinella* infection in the skeletal muscles of immunized mice.

### Discussion

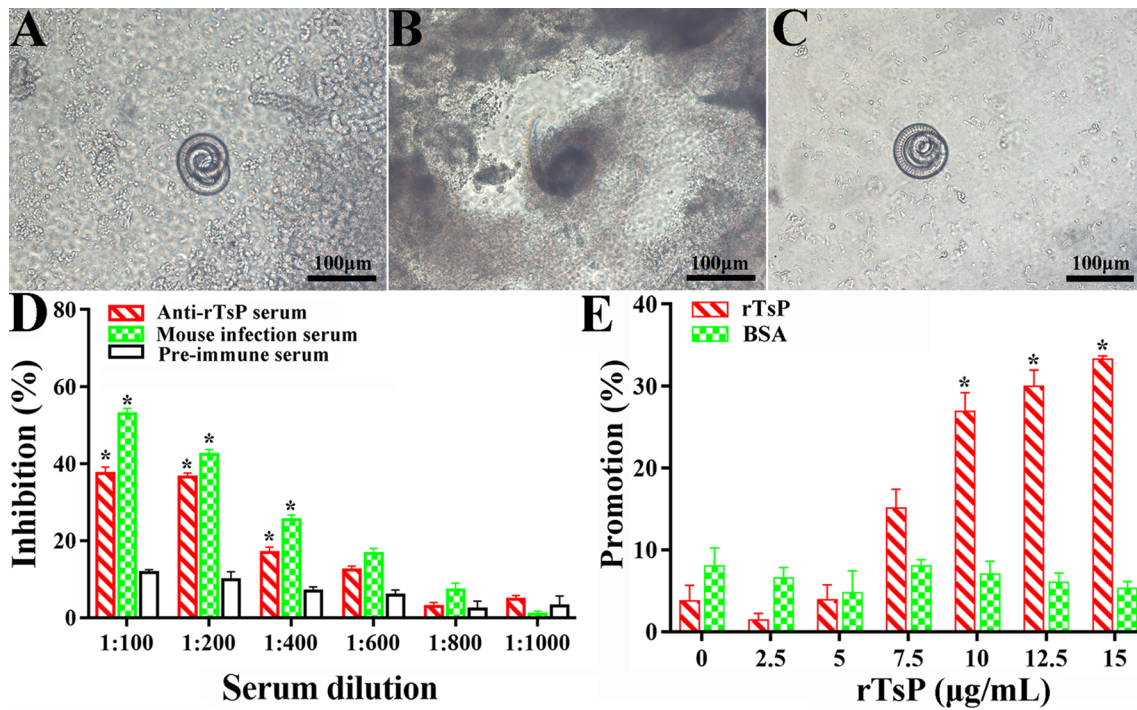
In the present study, the complete sequence of the TsP gene was cloned, and the TsP gene was expressed in a prokaryotic expression system. Sequence analysis showed that TsP has an identity of 86.67, 83.40, 83.02, 82.26, 81.51, 80.90 and 80.38% with peptidases of 7 encapsulated *Trichinella* species (*T. nelsoni*, *T. native*, *T. britovi*, T9, *T. patagoniensis*, T6 and *T. murrelli*) and an identity of 74.25% with a peptidase from the non-encapsulated species *T. papuae*. A phylogenetic tree showed strongly supported the presence of a monophyletic group of the genus *Trichinella*. Bioinformatics analysis revealed that TsP contains a functional domain with trypsin-like serine protease activity containing an active site carrying the classic catalytic triad, indicating that TsP is a member of the S1 subfamily of peptidases. The rTsP protein was desaturated by dissolving in 8 M urea and renatured by gradient dialysis [38], but the enzymatic activity of rTsP was not observed by using gel zymography with a specific substrate (data not shown). The absence of serine protease enzymatic activity in rTsP might be due to the incorrect folding of rTsP in a prokaryotic expression system [53] or because TsP is secreted in an inactive (pro) form [28]. Therefore, to obtain rTsP with enzymatic activity, a eukaryotic expression system must be used. After purification, rTsP was used to generate anti-rTsP antibodies. Immunization of mice with rTsP elicited a specific anti-rTsP antibody response, and the titre of specific anti-rTsP IgG in immune serum reached 1:10<sup>5</sup>, indicating that rTsP has strong immunogenicity.



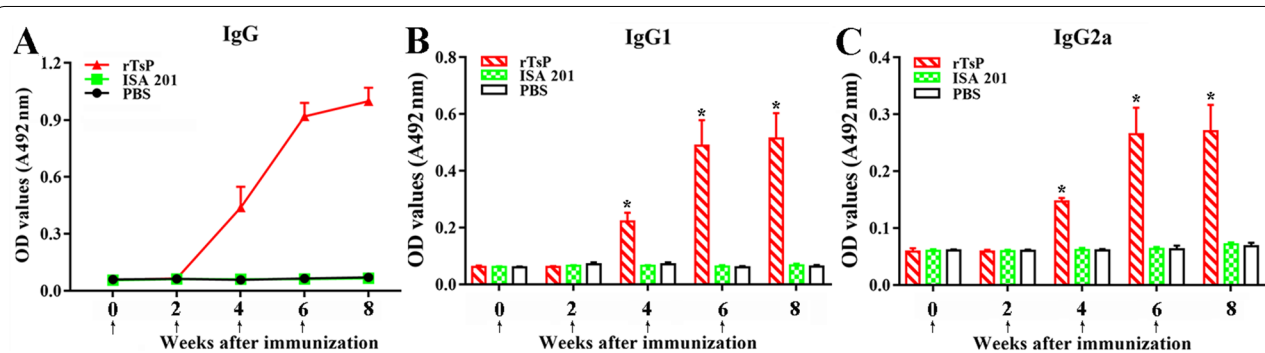
**Figure 7** Far-western blotting of rTsP binding with IEC proteins. **A** SDS-PAGE analysis of IEC (lane 1) and C2C12 cell (lane 2) lysates. **B** The specific binding between rTsP and IEC proteins was assessed by far-western blotting. A membrane carrying IEC proteins (lanes 1–6) was incubated with rTsP (lanes 1–3) or BSA (lanes 4–6). Specific bands of rTsP bound with IECs were identified by the application of infection serum (lane 1) and anti-rTsP serum (lane 2) but not pre-immune serum (lane 3). No binding between BSA and IEC proteins was detected with infection serum (lane 4), anti-rTsP serum (lane 5), or pre-immune serum (lane 6). No binding of rTsP with C2C12 cells was detectable using infection serum (lane 7), anti-rTsP serum (lane 8), or pre-immune serum (lane 9).



**Figure 8** rTsP-mediated promotion and anti-rTsP antibody-mediated inhibition of the larval invasion of IECs. *Trichinella spiralis* ML were first activated into ILL using 5% swine bile for 2 h at 37 °C, after which the ILL were added to an IEC monolayer. The ILL that invaded the IECs were examined under microscopy after culture for 2 h. **A** Non-invaded ILL coiled on the IEC surface. **B** Larvae that invaded the IEC monolayer were mobile and migratory. **C** Non-invaded ILL coiled on the surface of C2C12 cells, which were insensitive to larval invasion and utilized as negative control cells. **D** Inhibitory effect of anti-rTsP serum on ILL invasion of IECs. **E** rTsP promoted the ILL invasion of IECs. \* $P < 0.01$  compared to pre-immune serum or BSA. Scale bars: 100  $\mu$ m.



**Figure 9** rTsP-mediated promotion and anti-rTsP serum-mediated inhibition of the larval invasion of excised intestine. Two hundred ILL were pre-incubated with rTsP, anti-rTsP serum, infection serum, pre-immune serum, BSA, or PBS; subsequently injected into the excised mouse gut lumen; and maintained in Tyrode's solution at 37 °C for 2 h. The enteral segment was opened, and the enteral mucosa was compressed and observed under microscopy. **A** Non-invaded larvae showed a spiral coil-like shape within the enteral lumen. **B** Invaded larvae were inside the enteral mucosa. **C** Non-invaded larvae in the caecum were used as a negative control. **D** and **E** The inhibitory and promotive effects of the pre-incubation of larvae with anti-rTsP serum (**D**) or rTsP (**E**) on larval invasion of the enteral mucosa are shown. \* $P < 0.01$  compared to pre-immune serum or BSA. Scale bars: 100 µm.

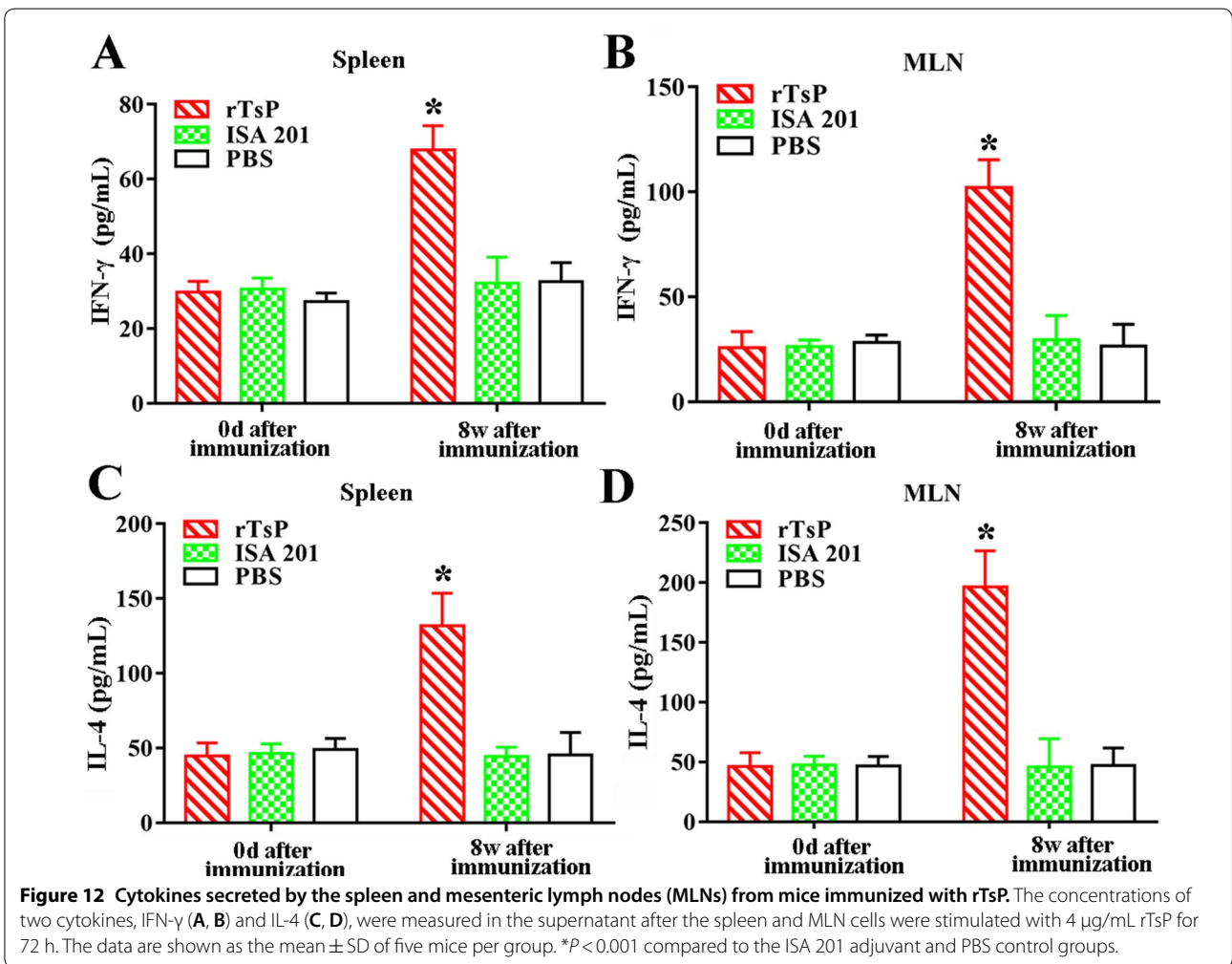
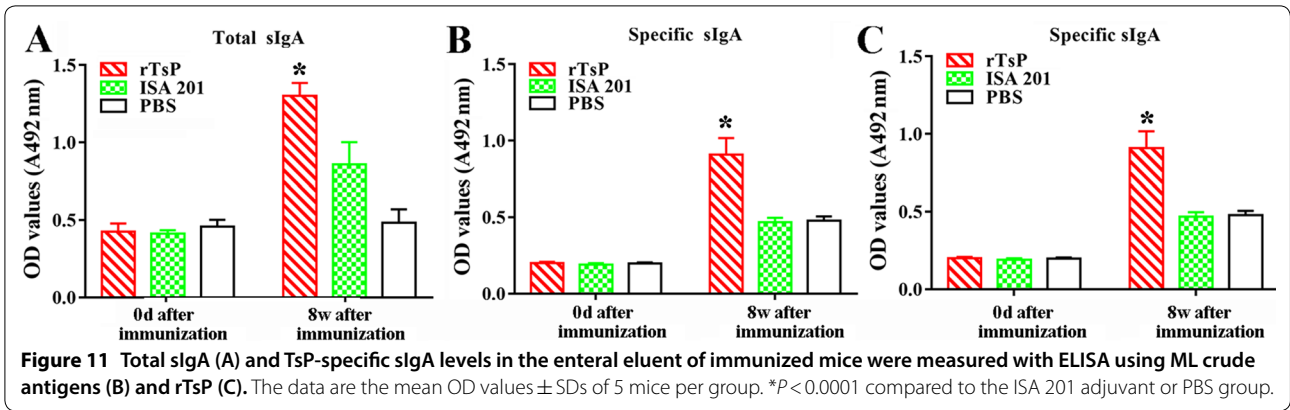


**Figure 10** Specific antibody responses in mice vaccinated with rTsP. **A** Specific total IgG in mice immunized with rTsP, the adjuvant ISA 201 or PBS at different time points after vaccination. Specific IgG1 (**B**) and IgG2a (**C**) subclass responses against rTsP at different times after vaccination. The OD values from each group are shown as the mean ± SD of antibody levels (n = 20). The vaccination times are indicated by arrows (↑). \* $P < 0.0001$  compared to the ISA 201 adjuvant or PBS group.

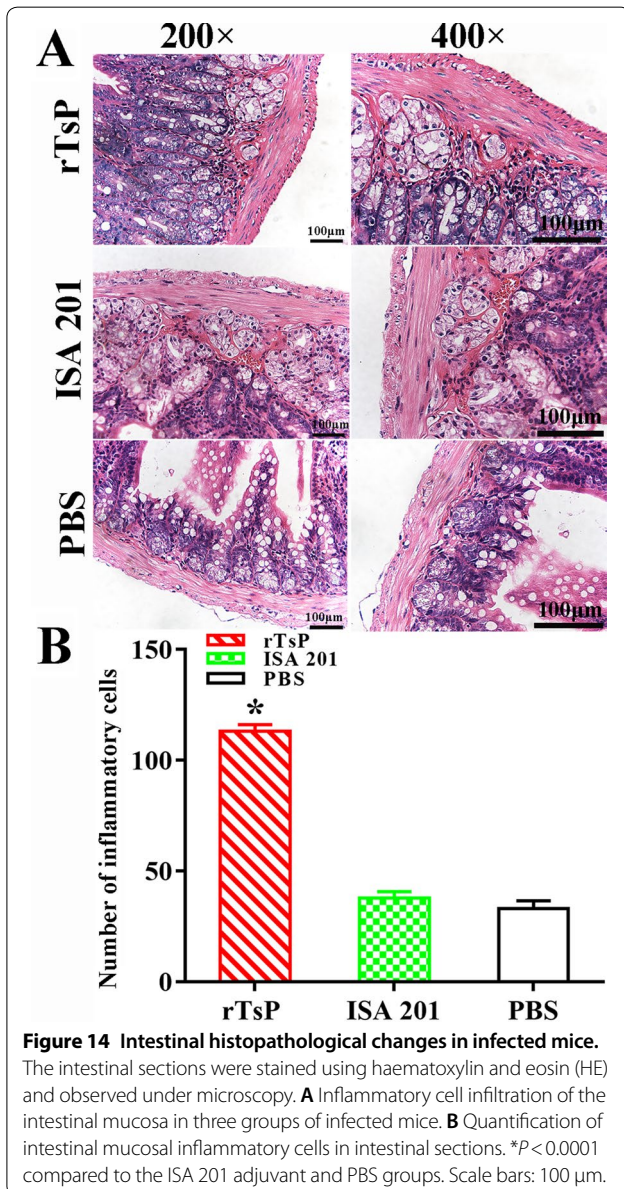
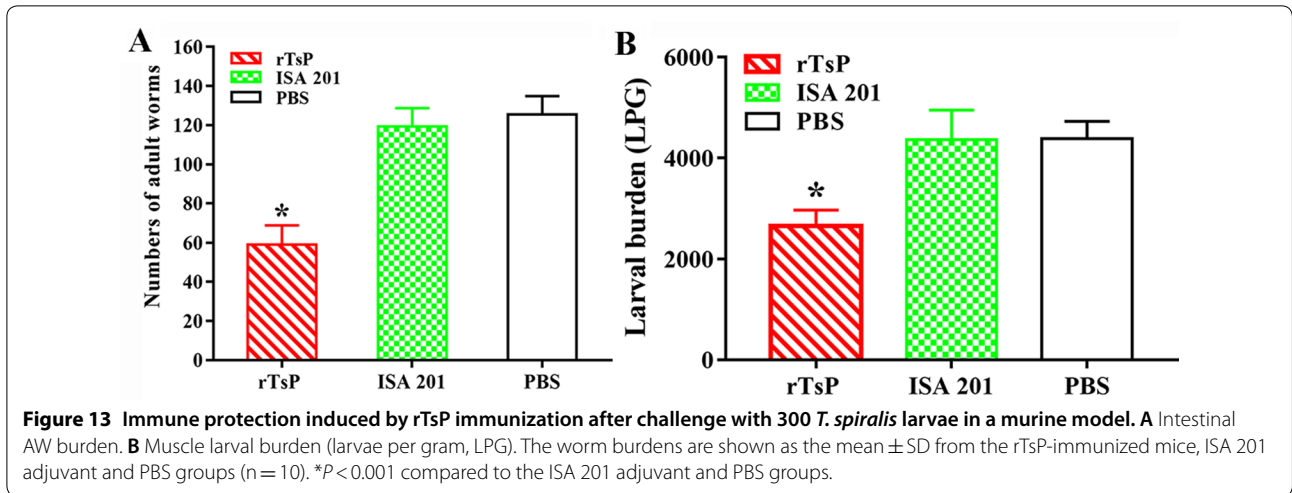
The results of RT-PCR showed TsP mRNA transcription in *T. spiralis* at all diverse stages examined (ML, IIL, 3- and 6-day-old AWs, and NBL). Western blot analysis revealed that several native TsP constructs with MWs of 28.7–41.7 kDa among the soluble and ES proteins of *T.*

*spiralis* ML were identified by anti-rTsP serum. This is likely because TsP adopt have various isoforms; because this TsP protein was post-translationally modified or processed; or because TsP is a member of the *Trichinella* serine protease superfamily, the members of which



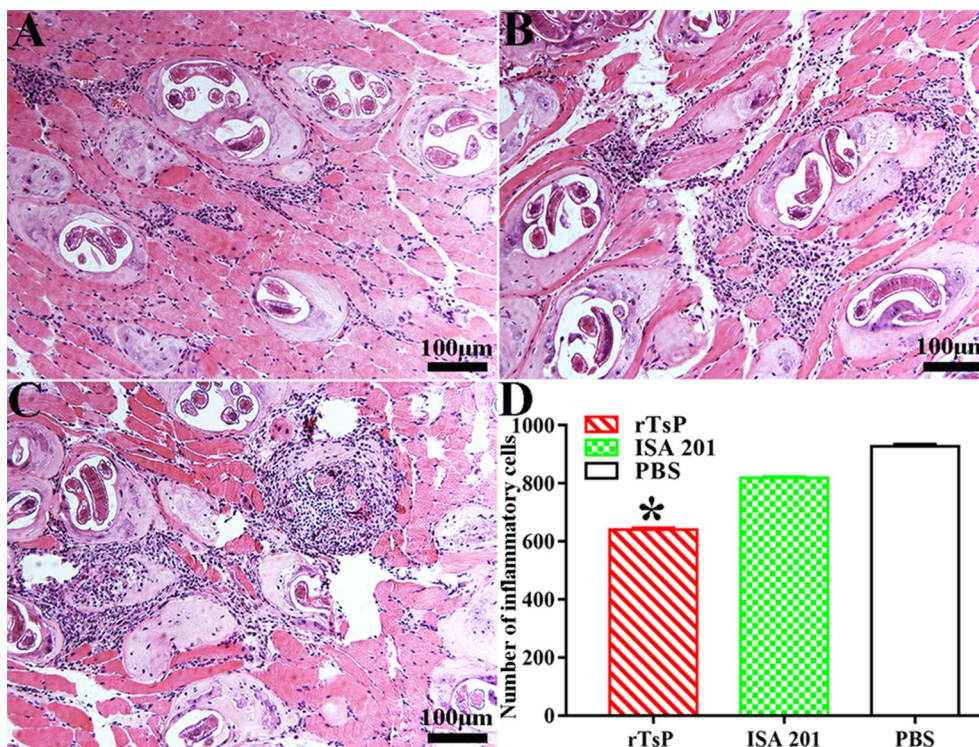






possess the same antigenic epitopes [19, 38, 41]. Western blotting also indicated that TsP was expressed in ML ES proteins and that TsP is a secretory protein, suggesting that TsP is directly exposed to the host's immune system and triggers the production of anti-TsP antibodies during *Trichinella* infection [12, 21, 39].

The IIFA results showed native TsP protein expression in *T. spiralis* at different stages (ML, IIL, AWs and NBL) and that TsP was localized dominantly at the epicuticle and of this parasite, suggesting that TsP, a primarily surface protein, might participate in *T. spiralis* intrusion and survival in the host [22]. The surface proteins of *T. spiralis* IIL are first exposed to and make direct contact with the host's intestinal epithelium, which might mediate larval invasion of the intestinal mucosa [15, 24]. The results of IIFA and far-western blotting showed that the specific binding of rTsP with the enteral epithelium and IECs, and the results of confocal microscopy indicated that the rTsP-binding sites are primarily localized in the cytoplasm. When the larval invasion of IECs and the isolated small intestine was examined in vitro, rTsP obviously increased the larval intrusion of IECs and intestinal mucosa, and this increase was dependent on the rTsP dose, a feature that might be related to specific binding between rTsP and IECs [43, 46, 52]. Moreover, the capacity of IIL to intrude into IECs and the intestinal mucosa was notably inhibited by the administration of anti-rTsP antibodies, and this inhibitory effect dependent on the dose of anti-rTsP antibodies. The suppressive effect of anti-rTsP antibody on larval intrusion might be due to the formation of a cap-like TsP and anti-TsP antibody immune complex at the IIL anterior, which hinders the direct contact of larvae with enterocytes, thus impeding larval intrusion [62]. When *Trichinella*-infected mouse sera were used in the intrusion assay, the suppressive



**Figure 15** Histopathological changes in skeletal muscles from infected mice. The masseter muscle sections were stained using haematoxylin and eosin (HE) and examined under microscopy. **A** rTsP-immunized mice. **B** ISA 201 adjuvant-inoculated mice. **C** PBS-treated control mice. **D** Quantification of inflammatory cells around encapsulated *T. spiralis* larvae on muscle sections. \* $P < 0.0001$  compared to the ISA 201 adjuvant and PBS groups. Scale bars: 100  $\mu$ m.

effect on intrusion was more pronounced than the effect of anti-rTsP serum. This is likely because antibodies against other invasion-related proteins from *T. spiralis* (e.g., cysteine proteases, aminopeptidases, glutathione S-transferase, and so on) in infected sera also exerted a suppressive effect against intrusion [45, 48]. However, it is necessary to identify which IEC proteins interact with TsP using co-immunoprecipitation, pull-down assays and a yeast two-hybrid system [63].

In the present study, to ascertain the protective immunity elicited by rTsP vaccination, the antibody and cytokine responses induced by rTsP vaccination were assessed. The results revealed that the vaccination of mice with rTsP triggered a prominent anti-TsP antibody response (high levels of IgG, IgG1/IgG2a and sIgA) and also triggered systemic (spleen) and local enteral mucosal (MLN) cellular immune responses, as shown by an obvious increase in a Th1 cytokine (IFN- $\gamma$ ) and Th2 cytokine (IL-4) after the spleens and MLN cells of immunized mice were stimulated using rTsP. This concomitant Th1/Th2 response plays a vital role in immune protection against *T. spiralis* infection [57, 64, 65]. Specific anti-*Trichinella* IgG participated in the rapid expulsion of worms from

the intestine and NBL destruction through ADCC [42, 66, 67]. Additionally, IFN- $\gamma$  plays a protective role against *T. spiralis* infection by enhancing cytotoxic killing and activating macrophages. IL-4 plays an important function in the development of resistance to *T. spiralis* infection, and when this cytokine was suppressed, the nematode survival was increased [68]. Furthermore, rTsP immunization appeared to enhance intestinal inflammatory infiltration in immunized mice, which may accelerate AW expulsion from the intestine. Muscle inflammatory infiltration in immunized mice might be alleviated after challenge because the IL-10 elicited by rTsP immunization restricts the inflammatory reaction to *T. spiralis* larvae infecting the muscle [57, 69]. Our results indicated that the immunization of mice with rTsP resulted in obvious reductions in the intestinal adult and muscle larval burdens in rTsP immunized mice. These results suggest that TsP plays an important role in the intrusion, development and survival of *T. spiralis* in hosts and that TsP is a promising candidate target molecule for vaccination against *T. spiralis* infection.

*Trichinella spiralis* is a multicellular parasitizing nematode with a complex life cycle that consists of four



developmental stages (ML, ILL, AWs and NBL). Each developmental stage has stage-specific antigens. The protective immunity triggered by vaccination with an individual *T. spiralis* protein molecule is not sufficient to protect the host from *T. spiralis* challenge infection [70]. In this study, the immunization of mice with rTsP reduced ML in muscle tissues by only 41.93%; *T. spiralis* larvae were not completely eliminated in immunized animal muscles. Therefore, an effective preventive vaccine should be composed of multiple antigens that can elicit immune responses against worms at various stages of the life cycle, polyvalent vaccines against target antigens from *T. spiralis* at diverse stages of the *T. spiralis* life cycle should be developed, and their immunoprotective effects should be evaluated in future experiments [60].

In conclusion, TsP is a surface and secretory protein expressed in *T. spiralis* at diverse stages that is primarily located at the epicuticle of the parasitic nematode. rTsP has the capacity to specifically bind IECs and the intestinal epithelium, and the rTsP-binding site is localized in the IEC cytoplasm. rTsP facilitated the larval intrusion of IECs and the intestinal mucosa, whereas anti-rTsP antibodies suppressed larval intrusion; these facilitative and suppressive effects were dose-dependently related to rTsP or anti-rTsP antibodies. The immunization of mice with rTsP triggered obvious systemic and enteral local antibody and cellular immune responses, resulting in significant immune protection against *T. spiralis* challenge. These results indicate that TsP plays a major role in the intrusion, development and survival of *T. spiralis* in hosts and that TsP is a promising candidate target molecule for vaccination against *T. spiralis* infection.

## Supplementary information

**Supplementary information** accompanies this paper at <https://doi.org/10.1186/s13567-020-00838-1>.

**Additional file 1. Sequence alignment of the *Trichinella spiralis* peptidase gene (XP\_003379348.1) with peptidase genes from other species or genotypes of the genus *Trichinella*.** Clustal X and BOXSHADE were used to analyse the sequences, and distinct differences between peptidases from different *Trichinella* species/genotypes were observed. Black shading indicates residues identical to those in TsP, and grey shading showed conservative substitutions.

## Abbreviations

AWs: adult worms; DAB: 3,3'-Diaminobenzidine tetrahydrochloride; DAPI: 4',6-Diamidino-2-phenylindole; ES: excretory/secretory; FBS: foetal bovine serum; IECs: intestinal epithelial cells; IIFA: indirect immunofluorescence assay; ILL: intestinal infective larvae; LPG: larvae per gram; ML: muscle larvae; MLN: mesenteric lymph nodes; MW: molecular weight; NBL: newborn larvae; pl: isoelectric point; SD: standard deviation; TsP: *T. spiralis* peptidase.

## Acknowledgements

We thank Mr. DQ Yang and Ms. YY Song for their help with bioinformatics and statistical analyses in this study.

## Authors' contributions

JC and ZQW designed this study. JLL, YYH, FL, SWY, RDL, SRL and PJ performed the experiments. JLL, JC and ZQW drafted and revised the manuscript. All authors read and approved the final manuscript.

## Funding

This study was supported by the National Natural Science Foundation of China (81971952; 81871673).

## Availability of data and materials

Not applicable.

## Ethics approval and consent to participate

Ethical approval was acquired from the Life Science Ethics Committee of Zhengzhou University (No. SCXK 2017-0001). The experimental animals were raised and cared for on the basis of the National Guidelines for Experimental Animal Welfare of the People's Republic of China (2006).

## Consent to publish

Not applicable.

## Competing interests

The authors declare that they have no competing interests.

Received: 2 July 2020 Accepted: 27 August 2020

Published online: 05 September 2020

## References

- Pozio E (2007) World distribution of *Trichinella* spp. infections in animals and humans. *Vet Parasitol* 149:3–21
- Cui J, Jiang P, Liu LN, Wang ZQ (2013) Survey of *Trichinella* infections in domestic pigs from northern and eastern Henan, China. *Vet Parasitol* 194:133–135
- Jiang P, Zhang X, Wang LA, Han LH, Yang M, Duan JY, Sun GG, Qi X, Liu RD, Wang ZQ, Cui J (2016) Survey of *Trichinella* infection from domestic pigs in the historical endemic areas of Henan province, central China. *Parasitol Res* 115:4707–4709
- Cui J, Wang ZQ, Xu BL (2011) The epidemiology of human trichinellosis in China during 2004–2009. *Acta Trop* 118:1–5
- Rostami A, Gamble HR, Dupouy-Camet J, Khazan H, Bruschi F (2017) Meat sources of infection for outbreaks of human trichinellosis. *Food Microbiol* 64:65–71
- Murrell KD, Pozio E (2011) Worldwide occurrence and impact of human trichinellosis, 1986–2009. *Emerg Infect Dis* 17:2194–2202
- Bai X, Hu X, Liu X, Tang B, Liu M (2017) Current research of trichinellosis in China. *Front Microbiol* 8:1472
- Zhang N, Li W, Fu B (2018) Vaccines against *Trichinella spiralis*: progress, challenges and future prospects. *Transbound Emerg Dis* 65:1447–1458
- Liu RD, Wang ZQ, Wang L, Long SR, Ren HJ, Cui J (2013) Analysis of differentially expressed genes of *Trichinella spiralis* larvae activated by bile and cultured with intestinal epithelial cells using real-time PCR. *Parasitol Res* 112:4113–4120
- Despommier DD (1998) How does *Trichinella spiralis* make itself at home? *Parasitol Today* 14:318–323
- Long SR, Wang ZQ, Jiang P, Liu RD, Qi X, Liu P, Ren HJ, Shi HN, Cui J (2015) Characterization and functional analysis of *Trichinella spiralis* Nudix hydrolyase. *Exp Parasitol* 159:264–273
- Wang ZQ, Liu RD, Sun GG, Song YY, Jiang P, Zhang X, Cui J (2017) Proteomic analysis of *Trichinella spiralis* adult worm excretory-secretory proteins recognized by sera of patients with early trichinellosis. *Front Microbiol* 8:986
- Ren HN, Liu RD, Song YY, Zhuo TX, Guo KX, Zhang Y, Jiang P, Wang ZQ, Cui J (2019) Label-free quantitative proteomic analysis of molting-related proteins of *Trichinella spiralis* intestinal infective larvae. *Vet Res* 50:70
- Song YY, Zhang Y, Yang D, Ren HN, Sun GG, Jiang P, Liu RD, Zhang X, Cui J, Wang ZQ (2018) The immune protection induced by a serine protease inhibitor from the foodborne parasite *Trichinella spiralis*. *Front Microbiol* 9:1544

15. Bolas-Fernandez F, Corral Bezara LD (2006) TSL-1 antigens of *Trichinella*: an overview of their potential role in parasite invasion, survival and serodiagnosis of trichinellosis. *Res Vet Sci* 81:297–303
16. Sofronic-Milosavljevic L, Ilic N, Pinelli E, Gruden-Movsesijan A (2015) Secretory products of *Trichinella spiralis* muscle larvae and immunomodulation: implication for autoimmune diseases, allergies, and malignancies. *J Immunol Res* 2015:523875
17. Wang ZQ, Wang L, Cui J (2012) Proteomic analysis of *Trichinella spiralis* proteins in intestinal epithelial cells after culture with their larvae by shotgun LC-MS/MS approach. *J Proteomics* 75:2375–2383
18. Wang L, Wang ZQ, Cui J (2013) Proteomic analysis of the changed proteins of *Trichinella spiralis* infective larvae after co-culture in vitro with intestinal epithelial cells. *Vet Parasitol* 194:160–163
19. Bien J, Cabaj W, Moskwa B (2015) Proteomic analysis of potential immunoreactive proteins from muscle larvae and adult worms of *Trichinella spiralis* in experimentally infected pigs. *Folia Parasitol (Praha)* 62
20. Cui J, Liu RD, Wang L, Zhang X, Jiang P, Liu MY, Wang ZQ (2013) Proteomic analysis of surface proteins of *Trichinella spiralis* muscle larvae by two-dimensional gel electrophoresis and mass spectrometry. *Parasit Vectors* 6:355
21. Wang L, Cui J, Hu DD, Liu RD, Wang ZQ (2014) Identification of early diagnostic antigens from major excretory-secretory proteins of *Trichinella spiralis* muscle larvae using immunoproteomics. *Parasit Vectors* 7:40
22. Liu RD, Cui J, Wang L, Long SR, Zhang X, Liu MY, Wang ZQ (2014) Identification of surface proteins of *Trichinella spiralis* muscle larvae using immunoproteomics. *Trop Biomed* 31:579–591
23. Liu RD, Cui J, Liu XL, Jiang P, Sun GG, Zhang X, Long SR, Wang L, Wang ZQ (2015) Comparative proteomic analysis of surface proteins of *Trichinella spiralis* muscle larvae and intestinal infective larvae. *Acta Trop* 150:79–86
24. Nagano I, Wu Z, Takahashi Y (2009) Functional genes and proteins of *Trichinella* spp. *Parasitol Res* 104:197–207
25. Yang Y, Wen Y, Cai YN, Vallee I, Boireau P, Liu MY, Cheng SP (2015) Serine proteases of parasitic helminths. *Korean J Parasitol* 53:1–11
26. Li JF, Guo KX, Qi X, Lei JJ, Han Y, Yan SW, Jiang P, Yu C, Cheng XC, Wang ZQ, Cui J (2018) Protective immunity against *Trichinella spiralis* in mice elicited by oral vaccination with attenuated *Salmonella*-delivered T5SP1.2 DNA. *Vet Res* 49:87
27. Xu J, Liu RD, Long SR, Song YY, Jiang P, Zhang X, Cui J, Wang ZQ (2020) Characterization of a chymotrypsin-like enzyme from *Trichinella spiralis* and its facilitation of larva penetration into the host's enteral epithelial cells. *Res Vet Sci* 128:1–8
28. Yousef GM, Elliott MB, Kopolovic AD, Serry E, Diamandis EP (2004) Sequence and evolutionary analysis of the human trypsin subfamily of serine peptidases. *Biochim Biophys Acta* 1698:77–86
29. Liu RD, Jiang P, Wen H, Duan JY, Wang LA, Li JF, Liu CY, Sun GG, Wang ZQ, Cui J (2016) Screening and characterization of early diagnostic antigens in excretory-secretory proteins from *Trichinella spiralis* intestinal infective larvae by immunoproteomics. *Parasitol Res* 115:615–622
30. Liu RD, Qi X, Sun GG, Jiang P, Zhang X, Wang LA, Liu XL, Wang ZQ, Cui J (2016) Proteomic analysis of *Trichinella spiralis* adult worm excretory-secretory proteins recognized by early infection sera. *Vet Parasitol* 231:43–46
31. Wang ZQ, Li LZ, Jiang P, Liu LN, Cui J (2012) Molecular identification and phylogenetic analysis of *Trichinella* isolates from different provinces in mainland China. *Parasitol Res* 110:753–757
32. Li LG, Wang ZQ, Liu RD, Yang X, Liu LN, Sun GG, Jiang P, Zhang X, Zhang GY, Cui J (2015) *Trichinella spiralis*: low vaccine potential of glutathione S-transferase against infections in mice. *Acta Trop* 146:25–32
33. Wu Z, Nagano I, Takahashi Y, Maekawa Y (2016) Practical methods for collecting *Trichinella* parasites and their excretory-secretory products. *Parasitol Int* 65:591–595
34. Sun GG, Wang ZQ, Liu CY, Jiang P, Liu RD, Wen H, Qi X, Wang L, Cui J (2015) Early serodiagnosis of trichinellosis by ELISA using excretory-secretory antigens of *Trichinella spiralis* adult worms. *Parasit Vectors* 8:484
35. Long SR, Wang ZQ, Liu RD, Liu LN, Li LG, Jiang P, Zhang X, Zhang ZF, Shi HN, Cui J (2014) Molecular identification of *Trichinella spiralis* nudix hydrolyase and its induced protective immunity against trichinellosis in BALB/c mice. *Parasit Vectors* 7:600
36. Qi X, Yue X, Han Y, Jiang P, Yang F, Lei JJ, Liu RD, Zhang X, Wang ZQ, Cui J (2018) Characterization of two *Trichinella spiralis* adult-specific DNase II and their capacity to induce protective immunity. *Front Microbiol* 9:2504
37. Xu J, Yang F, Yang DQ, Jiang P, Liu RD, Zhang X, Cui J, Wang ZQ (2018) Molecular characterization of *Trichinella spiralis* galectin and its participation in larval invasion of host's intestinal epithelial cells. *Vet Res* 49:79
38. Sun GG, Song YY, Jiang P, Ren HN, Yan SW, Han Y, Liu RD, Zhang X, Wang ZQ, Cui J (2018) Characterization of a *Trichinella spiralis* putative serine protease Study of its potential as sero-diagnostic tool. *PLoS Negl Trop Dis* 12:e0006485
39. Hu CX, Jiang P, Yue X, Zeng J, Zhang XZ, Song YY, Liu RD, Zhang X, Wang ZQ, Cui J (2020) Molecular characterization of a *Trichinella spiralis* elastase-1 and its potential as a diagnostic antigen for trichinellosis. *Parasit Vectors* 13:97
40. Cui J, Ren HJ, Liu RD, Wang L, Zhang ZF, Wang ZQ (2013) Phage-displayed specific polypeptide antigens induce significant protective immunity against *Trichinella spiralis* infection in BALB/c mice. *Vaccine* 31:1171–1177
41. Cui J, Wang L, Sun GG, Liu LN, Zhang SB, Liu RD, Zhang X, Jiang P, Wang ZQ (2015) Characterization of a *Trichinella spiralis* 31 kDa protein and its potential application for the serodiagnosis of trichinellosis. *Acta Trop* 142:57–63
42. Cui J, Han Y, Yue X, Liu F, Song YY, Yan SW, Lei JJ, Zhang X, Jiang P, Wang ZQ (2019) Vaccination of mice with a recombinant novel cathepsin B inhibits *Trichinella spiralis* development, reduces the fecundity and worm burden. *Parasit Vectors* 12:581
43. Xu J, Liu RD, Bai SJ, Hao HN, Yue WW, Xu YXY, Long SR, Cui J, Wang ZQ (2020) Molecular characterization of a *Trichinella spiralis* aspartic protease and its facilitation role in larval invasion of host intestinal epithelial cells. *PLoS Negl Trop Dis* 14:e0008269
44. Qi X, Han Y, Jiang P, Yue X, Ren HN, Sun GG, Long SR, Yu C, Cheng XC, Cui J, Wang ZQ (2018) Oral vaccination with *Trichinella spiralis* DNase II DNA vaccine delivered by attenuated *Salmonella* induces a protective immunity in BALB/c mice. *Vet Res* 49:119
45. Guo KX, Bai Y, Ren HN, Sun XY, Song YY, Liu RD, Long SR, Zhang X, Jiang P, Wang ZQ, Cui J (2020) Characterization of a *Trichinella spiralis* aminopeptidase and its participation in invasion, development and fecundity. *Vet Res* 51:78
46. Song YY, Zhang Y, Ren HN, Sun GG, Qi X, Yang F, Jiang P, Zhang X, Cui J, Wang ZQ (2018) Characterization of a serine protease inhibitor from *Trichinella spiralis* and its participation in larval invasion of host's intestinal epithelial cells. *Parasit Vectors* 11:499
47. Sun GG, Ren HN, Liu RD, Song YY, Qi X, Hu CX, Yang F, Jiang P, Zhang X, Wang ZQ, Cui J (2018) Molecular characterization of a putative serine protease from *Trichinella spiralis* and its elicited immune protection. *Vet Res* 49:59
48. Liu CY, Ren HN, Song YY, Sun GG, Liu RD, Jiang P, Long SR, Zhang X, Wang ZQ, Cui J (2018) Characterization of a putative glutathione S-transferase of the parasitic nematode *Trichinella spiralis*. *Exp Parasitol* 187:59–66
49. Hu CX, Zeng J, Yang DQ, Yue X, Dan Liu R, Long SR, Zhang X, Jiang P, Cui J, Wang ZQ (2020) Binding of elastase-1 and enterocytes facilitates *Trichinella spiralis* larval intrusion of the host's intestinal epithelium. *Acta Trop* 211:105592
50. Ren HJ, Liu RD, Wang ZQ, Cui J (2013) Construction and use of a *Trichinella spiralis* phage display library to identify the interactions between parasite and host enterocytes. *Parasitol Res* 112:1857–1863
51. Han Y, Yue X, Hu CX, Liu F, Liu RD, He MM, Long SR, Cui J, Wang ZQ (2020) Interaction of a *Trichinella spiralis* cathepsin B with enterocytes promotes the larval intrusion into the cells. *Res Vet Sci* 130:110–117
52. ManWarren T, Gagliardo L, Geyer J, McVay C, Pearce-Kelling S, Appleton J (1997) Invasion of intestinal epithelia in vitro by the parasitic nematode *Trichinella spiralis*. *Infect Immun* 65:4806–4812
53. Ren HN, Guo KX, Zhang Y, Sun GG, Liu RD, Jiang P, Zhang X, Wang L, Cui J, Wang ZQ (2018) Molecular characterization of a 31 kDa protein from *Trichinella spiralis* and its induced immune protection in BALB/c mice. *Parasit Vectors* 11:625
54. Yang F, Yang DQ, Song YY, Guo KX, Li YL, Long SR, Jiang P, Cui J, Wang ZQ (2019) In vitro silencing of a serine protease inhibitor suppresses



- Trichinella spiralis* invasion, development, and fecundity. *Parasitol Res* 118:2247–2255
55. Bermudez-Cruz RM, Fonseca-Linan R, Grijalva-Contreras LE, Mendoza-Hernandez G, Ortega-Pierres MG (2016) Proteomic analysis and immunodetection of antigens from early developmental stages of *Trichinella spiralis*. *Vet Parasitol* 231:22–31
  56. Sun GG, Lei JJ, Ren HN, Zhang Y, Guo KX, Long SR, Liu RD, Jiang P, Wang ZQ, Cui J (2019) Intranasal immunization with recombinant *Trichinella spiralis* serine protease elicits protective immunity in BALB/c mice. *Exp Parasitol* 201:1–10
  57. Zhang XZ, Sun XY, Bai Y, Song YY, Hu CX, Li X, Cui J, Wang ZQ (2020) Protective immunity in mice vaccinated with a novel elastase-1 significantly decreases *Trichinella spiralis* fecundity and infection. *Vet Res* 51:43
  58. Dea-Ayuela MA, Rama-Iniguez S, Bolas-Fernandez F (2006) Vaccination of mice against intestinal *Trichinella spiralis* infections by oral administration of antigens microencapsulated in methacrylic acid copolymers. *Vaccine* 24:2772–2780
  59. Yang F, Guo KX, Yang DQ, Liu RD, Long SR, Zhang X, Jiang P, Cui J, Wang ZQ (2020) Functional analysis of *Trichinella spiralis* serine protease 1.2 by siRNA mediated RNA interference. *Trop Biomed* 37:457–470
  60. Gu Y, Sun X, Huang J, Zhan B, Zhu X (2020) A multiple antigen peptide vaccine containing CD4(+) T cell epitopes enhances humoral immunity against *Trichinella spiralis* infection in mice. *J Immunol Res* 2020:2074803
  61. Xu D, Tang B, Yang Y, Cai X, Jia W, Luo X, Yan H, Zhang Z, Lin J, Liu M, Liu X (2020) Vaccination with a DNase II recombinant protein against *Trichinella spiralis* infection in pigs. *Vet Parasitol*. <https://doi.org/10.1016/j.vetpar.2020.109069>
  62. McVay CS, Tsung A, Appleton J (1998) Participation of parasite surface glycoproteins in antibody-mediated protection of epithelial cells against *Trichinella spiralis*. *Infect Immun* 66:1941–1945
  63. Lin JS, Lai EM (2017) Protein-protein interactions: yeast two-hybrid system. *Methods Mol Biol* 1615:177–187
  64. Pompa-Mera EN, Arroyo-Matus P, Ocana-Mondragon A, Gonzalez-Bonilla CR, Yepez-Mulia L (2014) Protective immunity against enteral stages of *Trichinella spiralis* elicited in mice by live attenuated *Salmonella* vaccine that secretes a 30-mer parasite epitope fused to the molecular adjuvant C3d-P28. *Res Vet Sci* 97:533–545
  65. Liu P, Cui J, Liu RD, Wang M, Jiang P, Liu LN, Long SR, Li LG, Zhang SB, Zhang XZ, Wang ZQ (2015) Protective immunity against *Trichinella spiralis* infection induced by TsNd vaccine in mice. *Parasit Vectors* 8:185
  66. Bell RG, Appleton JA, Negrao-Correa DA, Adams LS (1992) Rapid expulsion of *Trichinella spiralis* in adult rats mediated by monoclonal antibodies of distinct IgG isotypes. *Immunology* 75:520–527
  67. Moskwa B (1999) *Trichinella spiralis*: in vitro cytotoxicity of peritoneal cells against synchronous newborn larvae of different age. *Parasitol Res* 85:59–63
  68. Patel N, Kreider T, Urban JF Jr, Gause WC (2009) Characterisation of effector mechanisms at the host:parasite interface during the immune response to tissue-dwelling intestinal nematode parasites. *Int J Parasitol* 39:13–21
  69. Fabre MV, Beiting DP, Bliss SK, Appleton JA (2009) Immunity to *Trichinella spiralis* muscle infection. *Vet Parasitol* 159:245–248
  70. Ortega-Pierres G, Vaquero-Vera A, Fonseca-Linan R, Bermudez-Cruz RM, Arguello-Garcia R (2015) Induction of protection in murine experimental models against *Trichinella spiralis*: an up-to-date review. *J Helminthol* 89:526–539

## Publisher's Note

Springer Nature remains neutral with regard to jurisdictional claims in published maps and institutional affiliations.

Ready to submit your research? Choose BMC and benefit from:

- fast, convenient online submission
- thorough peer review by experienced researchers in your field
- rapid publication on acceptance
- support for research data, including large and complex data types
- gold Open Access which fosters wider collaboration and increased citations
- maximum visibility for your research: over 100M website views per year

At BMC, research is always in progress.

Learn more [biomedcentral.com/submissions](https://biomedcentral.com/submissions)

