


CORRECTION **OPEN**

Correction to: Hyperglycemia promotes myocardial dysfunction via the ERS-MAPK10 signaling pathway in db/db mice

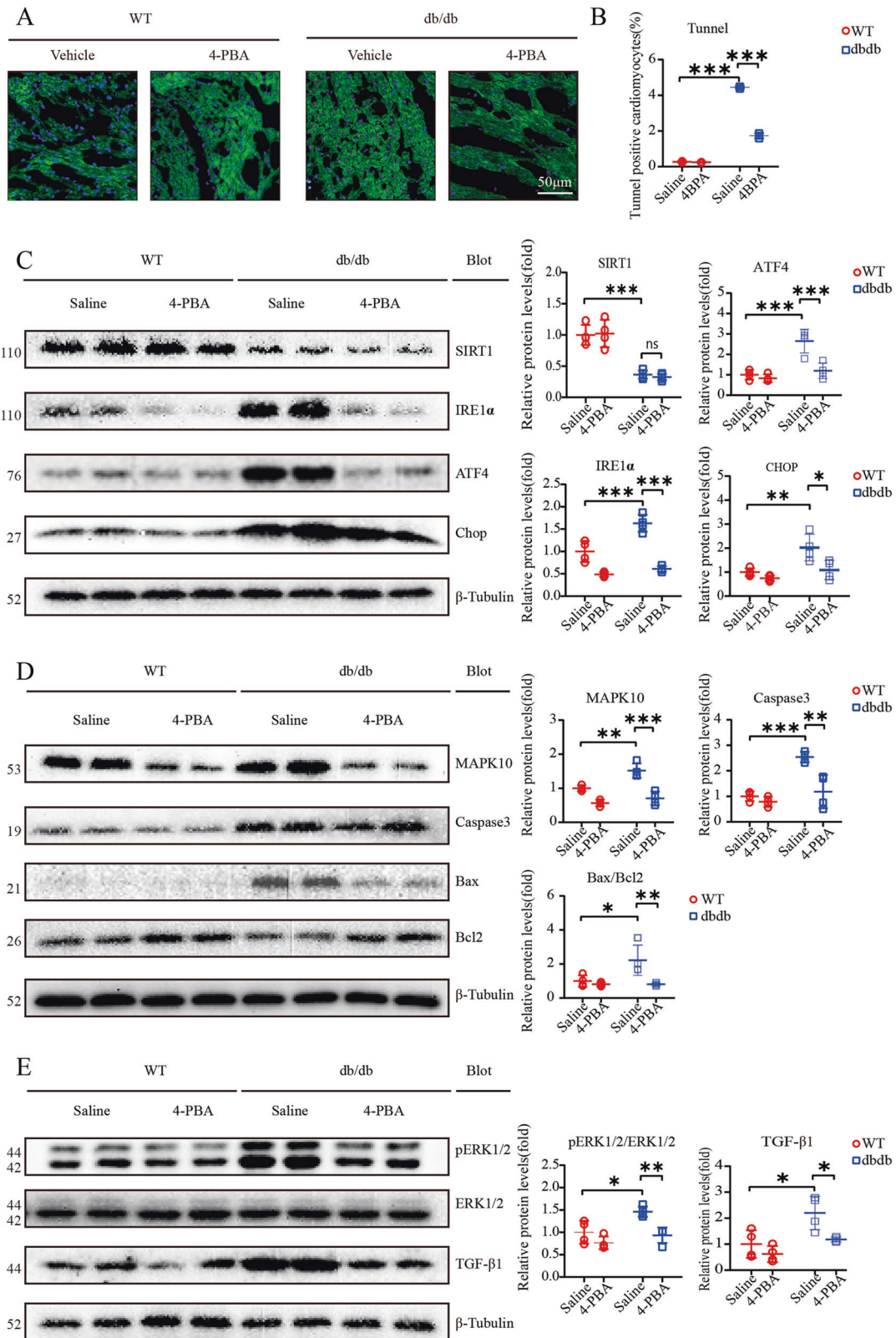
Ya-Wen Deng, Fei Liu, Zhi-Tong Li, Jing-Han Gao, Yong Zhao, Xiao-Lei Yang and Yun-Long Xia 

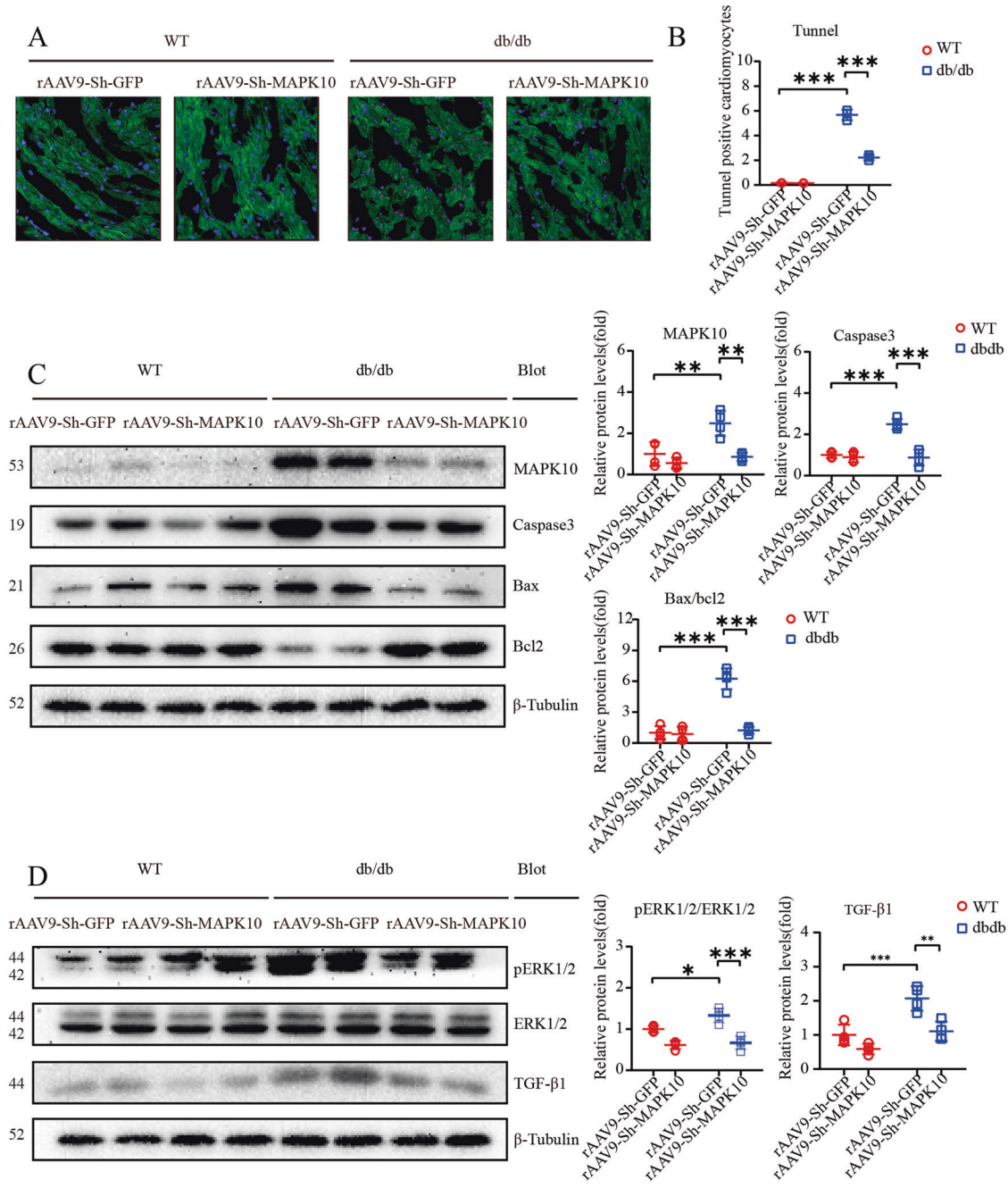
© The Author(s) 2022

Laboratory Investigation (2022) 102:1163–1165; <https://doi.org/10.1038/s41374-022-00833-4>

Correction to: *Laboratory Investigation* <https://doi.org/10.1038/s41374-022-00819-2>, published online 08 August 2022

The original version of this article unfortunately contained mistakes in Figs. 4 and 6. The authors found that the Tunnel staining of Fig. 4 was the same as Fig. 6. The correct figures can be found below. The original article has been corrected.





Open Access This article is licensed under a Creative Commons Attribution 4.0 International License, which permits use, sharing, adaptation, distribution and reproduction in any medium or format, as long as you give appropriate credit to the original author(s) and the source, provide a link to the Creative Commons license, and indicate if changes were made. The images or other third party material in this article are included in the article's Creative Commons license, unless indicated otherwise in a credit line to the material. If material is not included in the article's Creative Commons license and your intended use is not permitted by statutory regulation or exceeds the permitted use, you will need to obtain permission directly from the copyright holder. To view a copy of this license, visit <http://creativecommons.org/licenses/by/4.0/>.