



Prevalence of Diabetes Mellitus and Its Associated Unfavorable Outcomes in Patients With Acute Respiratory Syndromes Due to Coronaviruses Infection: A Systematic Review and Meta-Analysis

Clinical Medicine Insights:
Endocrinology and Diabetes
Volume 13: 1–16
© The Author(s) 2020
Article reuse guidelines:
sagepub.com/journals-permissions
DOI: 10.1177/1179551420962495



Isabel Pinedo-Torres¹ , Magaly Flores-Fernández²,
Marlon Yovera-Aldana^{1,3}, Claudia Gutierrez-Ortiz² ,
Paolo Zegarra-Lizana⁴, Claudio Intimayta-Escalante⁵,
Cristian Moran-Mariños⁶, Carlos Alva-Diaz^{1,3}
and Kevin Pacheco-Barrios⁷

¹Universidad Científica del Sur, Facultad de Ciencias de la Salud, Lima, Peru. ²Servicio de Endocrinología, Hospital Nacional Daniel Alcides Carrión, Callao, Perú. ³Red de Eficacia Clínica y Sanitaria, REDECS, Lima, Peru. ⁴School of Medicine, Universidad Peruana de Ciencias Aplicadas, Lima, Peru. ⁵Sociedad Científica de San Fernando. Facultad de Medicina. Universidad Nacional Mayor de San Marcos, Lima, Perú. ⁶Unidad de investigación en biometría, Universidad San Ignacio de Loyola, Lima, Perú. ⁷Unidad de Investigación para la Generación y Síntesis de Evidencias en Salud, Universidad San Ignacio de Loyola, Lima, Peru.

ABSTRACT

INTRODUCTION: Only 3 types of coronavirus cause aggressive respiratory disease in humans (MERS-Cov, SARS-Cov-1, and SARS-Cov-2). It has been reported higher infection rates and severe manifestations (ICU admission, need for mechanical ventilation, and death) in patients with comorbidities such as diabetes mellitus (DM). For this reason, this study aimed to determine the prevalence of diabetes comorbidity and its associated unfavorable health outcomes in patients with acute respiratory syndromes for coronavirus disease according to virus types.

METHODS: Systematic review of literature in Pubmed/Medline, Scopus, Web of Science, Cochrane, and Scielo until April of 2020. We included cohort and cross-sectional studies with no restriction by language or geographical zone. The selection and extraction were undertaken by 2 reviewers, independently. The study quality was evaluated with Loney's instrument and data were synthesized by random effects model meta-analysis. The heterogeneity was quantified using an I^2 statistic. Funnel plot, Egger, and Begg tests were used to evaluate publication biases, and subgroups and sensitivity analyses were performed. Finally, we used the GRADE approach to assess the evidence certainty (PROSPERO: CRD42020178049).

RESULTS: We conducted the pooled analysis of 28 studies ($n = 5960$). The prevalence analysis according to virus type were 451.9 diabetes cases per 1000 infected patients (95% CI: 356.74-548.78; $I^2 = 89.71\%$) in MERS-Cov; 90.38 per 1000 (95% CI: 67.17-118.38) in SARS-Cov-1; and 100.42 per 1000 (95% CI: 77.85, 125.26 $I^2 = 67.94\%$) in SARS-Cov-2. The mortality rate were 36%, 6%, 10% and for MERS-Cov, SARS-Cov-1, and SARS-Cov-2, respectively. Due to the high risk of bias (75% of studies had very low quality), high heterogeneity (I^2 higher than 60%), and publication bias (for MERS-Cov studies), we down rate the certainty to very low.

CONCLUSION: The prevalence of DM in patients with acute respiratory syndrome due to coronaviruses is high, predominantly with MERS-Cov infection. The unfavorable health outcomes are frequent in this subset of patients. Well-powered and population-based studies are needed, including detailed DM clinical profile (such as glycemic control, DM complications, and treatment regimens), comorbidities, and SARS-Cov-2 evolution to reevaluate the worldwide prevalence of this comorbidity and to typify clinical phenotypes with differential risk within the subpopulation of DM patients.

KEYWORDS: Prevalence, diabetes mellitus, Coronavirus infections, SARS virus, Middle East Respiratory Syndrome Coronavirus

RECEIVED: July 29, 2020. **ACCEPTED:** September 2, 2020.

TYPE: Meta-analysis

FUNDING: The author(s) disclosed receipt of the following financial support for the research, authorship, and/or publication of this article: Self-financed.

DECLARATION OF CONFLICTING INTERESTS: The author(s) declared no potential conflicts of interest with respect to the research, authorship, and/or publication of this article.

CORRESPONDING AUTHOR: Isabel Pinedo-Torres, Universidad Científica del Sur, Facultad de Ciencias de la Salud, Panamericana Sur km 19, Lima 42, Peru. Email: ipinedo@ucientifica.edu.pe

Introduction

Coronavirus is a family of viruses that cause respiratory diseases, and 7 of its types can affect humans.¹ Aggressive acute respiratory syndromes are produced by 3 of them. The Severe

Acute Respiratory Syndrome Coronavirus type 1 (SARS-Cov-1) originated an outbreak in 2002-2003 in Guangdong, a province in China² with a mortality rate of 10%;³ Middle East Respiratory Syndrome Coronavirus (MERS-Cov)



Creative Commons Non Commercial CC BY-NC: This article is distributed under the terms of the Creative Commons Attribution-NonCommercial 4.0 License (<https://creativecommons.org/licenses/by-nc/4.0/>) which permits non-commercial use, reproduction and distribution of the work without further permission provided the original work is attributed as specified on the SAGE and Open Access pages (<https://us.sagepub.com/en-us/nam/open-access-at-sage>).

caused other outbreak in Saudi Arabia in 2012, and its lethality reached 34.3%;⁴ and Severe Acute Respiratory Syndrome Coronavirus type 2 (SARS-Cov-2) reported its first pneumonia cases in the province of Wuhan in China at the end of 2019. Due to its spread and severity, the World Health Organization (WHO) declared it a pandemic on March 11th, 2020.⁵

One of the most frequent reported comorbidities of infected adult patients with coronaviruses is diabetes mellitus (DM).⁶ Several mechanisms are postulated to explain this association: (1) increased cell affinity and efficient virus entrance by overexpression of angiotensin-converting enzyme 2 (ACE2) receptor⁷⁻⁹ in the case of SARS-Cov-1 and SARS-Cov-2, and dipeptidyl peptidase 4 protein (DPP4) for MERS-Cov; (2) decreased viral clearance^{10,11}; (3) decreased quantity and function of T-cells¹²; (4) susceptibility to hyperinflammation by an increase of pro-inflammatory cytokines¹³; (5) increased cytokines profile without an appropriate stimulus¹⁴; and (6) the high comorbidity with cardiovascular diseases such as hypertension which is treated with ACE inhibitors, thus overexpressing the ACE2 receptors in these patients.^{15,16}

DM is associated with poor outcomes in patients with coronavirus infection. In patients with DM, the infection of MERS-Cov is associated with admission to intensive care unit (ICU) ($P < .05$),¹⁷ need of mechanical ventilation (MV) ($P < .05$),¹⁸ and a high risk of death (OR: 1.8, 95% CI: 1.5-2.1).¹⁹ In SARS-Cov-2 is similar, among DM patients, 17%²⁰ were hospitalized in UCI, 20.3% needed MV,²¹ and from 10.6% to 47.2% died.^{21,22} DM is highly prevalent, around the world there are approximately 415 million people²³ with DM, and in the context of the current SARS-Cov-2 pandemic they become an extremely high-risk group to adverse outcomes during an eventual infection. However, the prevalence of DM and coronavirus comorbidity has not been fully explored and compared by virus type, nor has the frequency of poor outcomes in this high-risk population subgroup. Therefore, we aimed to determine the pooled prevalence of DM and its associated unfavorable health outcomes in patients with acute respiratory syndromes for coronavirus disease according to virus type.

Materials and Methods

Protocol and registration

Our study was performed according to the recommendations of the Preferred Reporting Items for Systematic Reviews and Meta-Analyses (PRISMA),²⁴ the checklist appears in Supplemental Material 1. The study protocol was registered at PROSPERO, number CRD42020178049.

Literature search and study selection

A systematic search was carried out in the following databases: PubMed/Medline, Scopus, Web of Science, Cochrane (via

OvidSP), and Scielo until April 2020. Additionally, systematic reviews were explored to identify potential eligible articles for our analysis.

The search strategy included Medical Subject Title (MeSH) terms for “Diabetes Mellitus” and related words for “COVID-19” or “Severe acute respiratory syndrome coronavirus 2” (complete details of the search strategy appear in Supplementary Material 2). Cohorts and cross-sectional studies were included, and no restriction was made with respect to language and geographical area. Any other type of publication was excluded (letter, note, conference paper, short survey, editorial and erratum, review articles, case studies, case-control studies, vaccination and clinical trials, or family-based studies).

The inclusion criteria were: (1) available data of more than 10 patients; (2) adult patients; (3) number of participants with confirmed diagnosis of DM type I or II; and (4) confirmed diagnosis of coronavirus infection. Duplicate documents were removed with Endnote X9 Software. Subsequently, titles and abstracts were selected to identify potentially relevant articles according to the inclusion criteria. Lastly, potential articles were evaluated in full text to assess their eligibility. Two authors carried out the selection process independently (CGO & CIE) and third author (IPT) resolved discrepancies by discussion and consensus. The complete list of articles excluded at this stage of the full text is available in Supplemental Material 3.

Data extraction and quality evaluation

Two authors (CGO and PZL) independently extracted the following data from each included article using a standardized form in Microsoft Excel. Author, year of publication, country, study design, number of participants, characteristics of the population, type of virus, clinical outcome, gender, and prevalence estimates were extracted. A third author (MYA) checked that the data quality before analysis. When studies with the same population were identified, only the most recent or complete publication was included.

We assessed the quality of the prevalence studies according to the questionnaire developed by Loney et al.²⁵ The study's quality was based on 8 criteria grouped into 3 dimensions: validity, results, and applicability. We assigned one point if the following criteria is present in the study: (1) random sample or the whole population; (2) unbiased sampling frame (ie, census data); (3) adequate sample size (>50 subjects); (4) standard and objective criteria for DM definition were used; (5) outcomes were measured in an unbiased fashion; (6) adequate response rate (70%) and non-responders were described; (7) confidence intervals and subgroup analysis were reported; and (8) study subjects were described in detail. The total score was calculated for each study (score range 0-8). Quality score of 0 to 2 was considered very low, score of 3 to 4 as low, score of 5 to 6 as moderate, and score of 7 to 8 as high quality.

Statistical analyses

Our primary outcome was the prevalence of patient with coronavirus infection and DM comorbidity as the proportion from the total reported patients with coronavirus diseases. We also calculated and reported the median prevalence and interquartile ranges (IQR). Our secondary outcomes were the frequency of poor health outcome as the proportion of ICU admission, mechanical ventilation, and deaths. All the analyses were performed separately by virus type.

The data were synthesized by meta-analysis analytical techniques. Heterogeneity was quantified using an I^2 statistic. Because of the proportions were often expected to be near to 0 or 1, we used Freeman-Tukey Double Arcsine transformation to stabilize the variances before to implement a random effects meta-analysis implementing the DerSimonian-Laird method (due to the a priori expected high between-study heterogeneity).^{26,27} The pooled estimates were expressed as prevalence per 1000 infected patients with the corresponding 95% confidence intervals using the exact method.²⁸ We conducted subgroups analysis according gender and country. We also conducted a post-hoc sensitivity analysis according risk of bias categories, sample size, study design, data collection, number of centers, sampling type, and excluding 1 study at the time to test single-study influence.

Additionally, we conducted univariate meta-regression to test the influence of study level moderators on the prevalence of DM and coronavirus comorbidity.²⁹ We based our analysis on the Thompson and Higgins recommendations,³⁰ we hypothesized that sample size, study design, diagnostic criteria, and study quality will have an effect on the prevalence estimate. Each moderator was tested on a minimum of 8 included studies in the meta-analysis.³⁰ To select the best model, we assessed the residual percentage of variation due to heterogeneity and the proportion of between-study variance explained in addition to the significant criterion of $P < .05$ per each moderator. Furthermore, funnel plots, and Egger's and Begg's tests were used to evaluate publication bias. All statistical analyses were performed using STATA 15.

Evidence certainty assessment

As recommended by Cochrane,³¹ we assessed the certainty of the evidence (pooled estimates) from our included studies in the quantitative synthesis. The grading of recommendation, assessment, development, and evaluation (GRADE) instrument³² was used. This critical appraisal was based on considerations such as study design, inconsistency, indirectness, imprecision, and publication bias as stated in the GRADE handbook.³³ We adapted the assessment to prevalence estimates. The certainty of the evidence was characterized as high, moderate, low, or very low.³² The results were reported as a summary of findings table (SoF), performed in the GRADE online tool (<http://gradepro.org>).

Results

Studies characteristics

A total of 84 documents were identified during the initial search and 11 duplicates were removed. In the review by title and abstract, there were 44 potentially eligible documents. To the above, 11 articles found in the citations of the systematic reviews identified were added. In the full-text evaluation, 27 documents were excluded either by design or population characteristics, and finally 28 were included in the study (Figure 1).

The publication years of the included studies ranged from 2006 to 2020. Most of the studies were from China (14), eleven studies from Arabia; Italy, Singapore, and South Korea had 1 study, respectively. Fourteen studies were multicentric, 24 were cohort studies, and 4 studies were cross-sectional. Regarding the type of virus, 12 studies included MERS-Cov cases, 1 study included SARS-Cov-1 patients, 15 studies included SARS-Cov-2 cases. Also, the most common diagnostic criteria for coronavirus infection were molecular test (24 studies), followed by clinical criteria (2 studies). Descriptive information on each included article is provided in Table 1.

The 28 studies reported data on the prevalence of DM, MERS-Cov studies reported 507 diabetic patients from 1682 participants, the SARS-Cov-1 study included 47 diabetic patients from 520 total participants, and SARS-Cov-2 studies reported 387 diabetic patients from 3758 participants.

Study quality

The range of quality score²⁵ for the included studies was from 1 to 5, the sixth domain (adequate response rate) was non evaluable in all the studies; whereas the fourth and fifth domain (standard and unbiased measurement) obtained the more negative responses. Most of the studies were of very low quality (75%). From the MERS-Cov studies, 9/12 documents had very low quality (score of 0-2), the SARS-Cov-1 study had a low quality (score of 3-4), and from the SARS-Cov-2 studies, 12/15 documents had very low quality (score of 0-2).

Pooled prevalence estimates

We performed the pooled analysis of the 28 studies ($n = 5960$). Due to data availability the pooled estimates were performed for MERS-Cov and SARS-Cov-2 studies. The median prevalence proportions and their IQR were 49.3% (29.5-61.4) and 10.8% (5.9-16.6) for MERS-Cov and SARS-Cov-2, respectively. The prevalence analysis according to virus type were 451.9 diabetes cases per 1000 infected patients with MERS-Cov (95% CI: 356.74-548.78, $I^2 = 89.71\%$, $n = 1682$, 12 studies); 90.38 per 1000 patients with SARS-Cov-1 (95% CI: 67.17-118.38, $n = 520$); and 100.42 per 1000 infected patients with SARS-Cov-2 (95% CI: 77.85-125.26, $I^2 = 67.94\%$, $n = 3758$, 15 studies) (Figure 2).

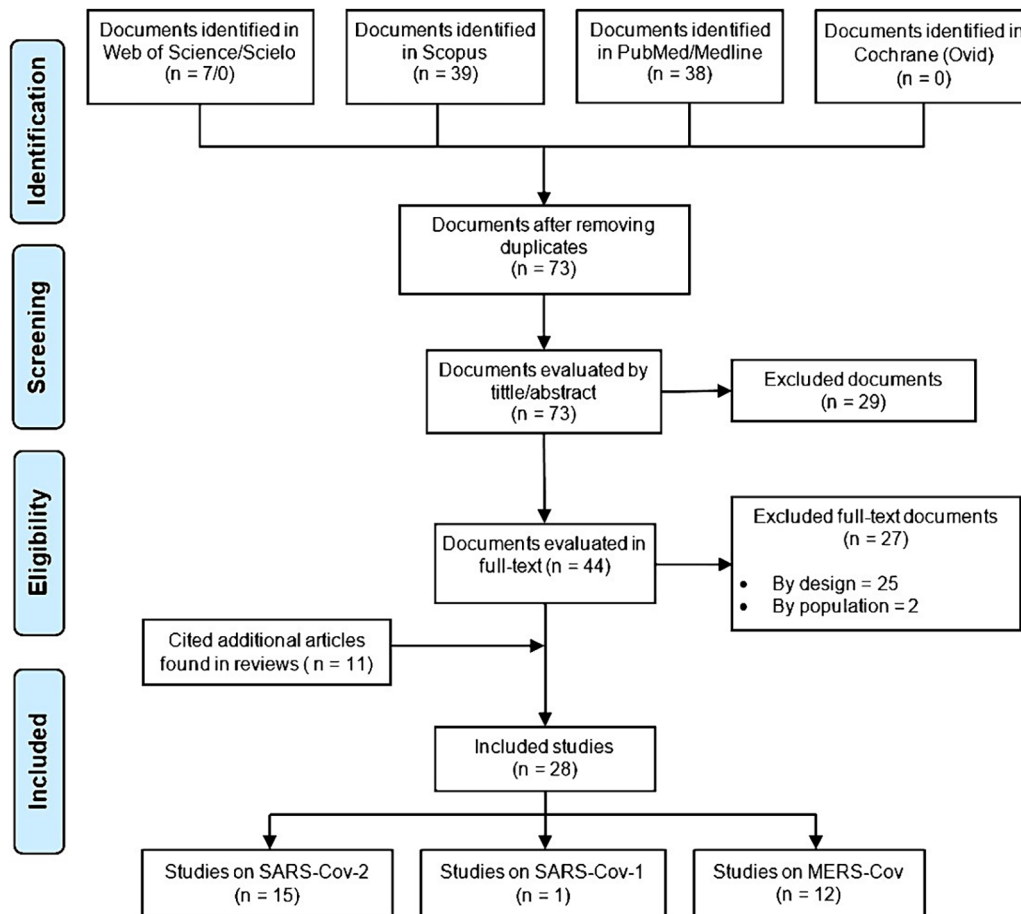


Figure 1. Flow chart of study selection.

Unfavorable health outcomes estimates

Unfavorable health outcomes were assessed only in patients with DM. The mortality rate in patients with MERS-Cov (6 studies) was 356.53 per 1000 (95% CI: 294.45-420.98, $P=0\%$), in SARS-Cov-1 (1 study) was 55.77 per 1000 (95% CI: 37.66-79.11), and in SARS-Cov-2 (2 studies) was 96.33 per 1000 (95% CI: 61.36-137.66, $P=0\%$). Mechanical ventilation was reported in just 1 study both MERS-Cov and SARS-Cov-2 and ICU admission was reported in 2 studies in MERS-Cov and just 1 in SARS-Cov-2. The completed estimates are described in the Table 2.

Subgroup Analysis

In the MERS-Cov studies, the prevalence in women was 330.91 per 1000 infected patients (95% CI: 307.98-354.23, $P=0\%$) while in men was 666.73 per 1000 (95% CI: 627.43-704.95, $P=35.39\%$). Eleven studies are from Arabia Saudi, the prevalence was 475.76 per 1000 (95% CI: 364.06-588.63, $P=90.62\%$) and 1 study from Korea with a prevalence of 279.57 per 1000 (95% CI: 216.38-349.93). In the SARS-Cov-2 studies, the DM prevalence in women were 420.07 per 1000 infected patients (95% CI: 329.76-513.06, $P=95.71\%$) while in men was 579.93 per 1000 (95% CI: 486.94-670.24,

$P=95.71\%$). According to the country, the DM prevalence in China was 101.79 per 1000 infected patients (95% CI: 73.42-133.81, $P=70.01\%$), in Singapore was 55.56 per 1000 (95% CI: 1.41-272.94), and in Italy was 113.14 per 1000 (95% CI: 97.98-129.73) (Table 3).

Sensitivity analysis

For both MERS-Cov and SARS-Cov-2 evidence bodies, the pooled estimates were not significantly different even if the study with the largest estimation was removed from the analysis and also when we excluded 1 study at a time.

In the sensitivity analysis of MERS-Cov studies, we found that the DM prevalence was double in very low quality studies (539.38 per 1000, 95% CI: 452.59-626.24, $P=53.47\%$) compared to the low (279.57 per 1000, 95% CI: 216.38-349.93) and moderate quality (246.30 per 1000, 95% CI: 222.27-271.14). The DM prevalence was higher when the studies had a small sample (543.94 per 1000, 95% CI: 441.40-644.76, $P=59.09\%$). All studies had longitudinal design and 11/12 were historical cohorts. The prevalence was higher in retrospective studies (475.76 per 1000, 95% CI: 364.06-588.63, $P=90.62\%$).

In the SARS-Cov-2 studies, 12/15 had very low quality with a DM prevalence of 111.34 per 1000 (95% CI: 81.62-144.63,

Table 1. Descriptive information on each article included in the systematic review.

N	AUTHOR AND YEAR	COUNTRY	N	POPULATION	GENDER	AVERAGE AGE	GENERAL CLINICAL OUTCOME	CLINICAL OUTCOMES IN DIABETICS	FUNDING
MERS-Cov studies									
1	Assiri et al ³⁴	Saudi Arabia	47	Cases of laboratory-confirmed MERS-Cov disease reported from Saudi Arabia between Sept 1, 2012, and June 15, 2013	F: 11 M: 36	Divided by groups	ICU: 42 MV: 34 Death: 28	ICU: NR MV: NR Death: 21	None
2	Assiri et al ³⁵	Saudi Arabia	23	Between April 1 and May 23, 2013, a total of 23 confirmed cases of human infection with MERS-Cov were identified in the eastern province of Saudi Arabia	F: 6 M: 17	56	ICU: 18 MV: 18 Death: 15	NR	Not declared
3	Arabi et al ³⁶	Saudi Arabia	12	Between December 2012 and August 2013, 114 patients were tested for suspected MERS-Cov;	F: 4 M: 8	59	ICU: 12 MV: 12 Death: 7	NR	Not declared
4	Shalhoub et al ³⁷	Saudi Arabia	32	Patients who were admitted to King Fahad Armed Forces Hospital, Jeddah, Saudi Arabia, between 1 April 2014 and 30 June 2014	F: 10 M: 14	66	ICU: NR MV: 16 Death: 22	NR	Internal funding
5	Noorwali et al ³⁸	Saudi Arabia	261	All cases of MERS-Cov reported in 4 cities of the Makkah Region from March to June 2014	F: 90 M: 171	Divided by cities and gender	ICU: NR MV: NR Death: 109	NR	Not declared
6	KCDCP ³⁹	Republic of Korea	186	Confirmed patients with MERS-Cov infection across 16 hospitals were identified in the Republic of Korea.	F: 75 M: 111	55	ICU: NR MV: NR Death: 36	NR	Not declared
7	Sherbinj ⁴⁰	Saudi Arabia	29	MERS-Cov cases recorded by 21 tertiary hospitals from the Madinah region from March 2014 to May 2014	F: 9 M: 20	D: 54.6 ± 13.0 S: 40.7 ± 8.5	ICU: 29 MV: 9 Death: 10	ICU: NR MV: NR Death: 7	Not declared
8	Assiri et al ⁴¹	Saudi Arabia	38	Patient from Taif Governorate who was reported with laboratory-confirmed MERS-Cov infection during August 1, 2014-February 1, 2015.	F: 10 M: 28	51	ICU: 23 MV: 18 Death: 21	ICU: NR MV: NR Death: 11	Not declared
9	Alshahfi et al ⁴²	Saudi Arabia	939	Data obtained from the Saudi Ministry of Health for the period 2012 to July 2015. Cases were defined as patients with a positive nucleic acid test for MERS-Cov, whether diagnosed due to clinical presentation because of illness, or active surveillance in known contacts.	F: 315 M: 624	Divided by groups	ICU: NR MV: NR Death: 425	NR	Not declared
10	Almekhlafi et al ⁴³	Saudi Arabia	31	Patients aged 18 years or more with confirmed MERS-Cov infection who were admitted to our 20-bed mixed medico-surgical ICU between October 1, 2012 and May 31, 2014.	F: 9 M: 22	59	ICU: 31 MV: 27 Death: 23	ICU: 17 MV: NR Death: 13	Institutional funds
11	Garout et al ⁴⁴	Saudi Arabia	52	This study conducted at the Intensive Care Unit (ICU) of the King Fahad Hospital, Jeddah (KFHU), Kingdom of Saudi Arabia from March 2014 to July 2014	F: 12 M: 40	Divided by groups	ICU: 52 MV: NR Death: 39	ICU: NR MV: NR Death: 19	Not declared
12	Al-abbady et al ¹⁸	Saudi Arabia	32	All patients testing positive for MERS-Cov locally by real-time reverse transcription PCR (RT-PCR) assay and admitted to this hospital during August 1, 2015-August 31, 2016	F: 12 M: 20	36	ICU: 20 MV: 19 Death: 12	ICU: 15 VM: 14 Death: 11	Ministry of Health in Saudi Arabia and US Centers for Disease Control and Prevention

(Continued)

Table 1. (Continued)

N	AUTHOR AND YEAR	COUNTRY	N	POPULATION	GENDER	AVERAGE AGE	GENERAL CLINICAL OUTCOME	CLINICAL OUTCOMES IN DIABETICS	FUNDING
SARS-CoV-1 studies									
1	Yang et al ⁴⁵	China	520	SARS patients admitted to different hospitals in the Beijing area	F: 284 M: 236	G1: 33.5 ± 12.9 G2: 36.9 ± 16.1 G3: 56.2 ± 15.6	ICU: NR MV: NR Death: 135	ICU: NR MV: NR Death: 29	Not declared
SARS-CoV-2 studies									
1	Xu et al ⁴⁶	China	62	Patients admitted to hospital with laboratory confirmed SARS-CoV-2 infection. Data were collected from 10 January 2020 to 26 January 2020.	F: 27 M: 35	41	ICU: 1 MV: 1 Death: NR	NR	None
2	Liu et al ⁴⁷	China	137	Patients admitted to the respiratory departments identified to be nucleic acid positive for 2019-nCoV in 9 tertiary hospitals in Hubei province from December 30, 2019 to January 24, 2020.	F: 76 M: 61	57	ICU: NR MV: 34 Death: 16	NR	Not declared
3	Song et al ⁴⁸	China	51	Patients admitted with laboratory-confirmed 2019-nCoV infection by using RT-PCR, patients who underwent thin-section CT, and patients with CT images that demonstrated pneumonia.	F: 26 M: 25	49	NR	NR	Not declared
4	Grasselli et al ⁴⁹	Italy	1591	Patients with laboratory-confirmed COVID-19 referred for ICU admission to the coordinator center (Fondazione IRCCS Ca' Granda Ospedale Maggiore Policlinico, Milan, Italy)	F: 287 M: 1304	63	ICU: 1591 MV: 1150 Death: 405	NR	Institutional funding of the Department of Anesthesia, Critical Care and Emergency, Fondazione IRCCS Ca' Granda Ospedale Maggiore Policlinico, Milan, Italy
5	Young et al ⁴⁹	Singapore	18	Between January 23 and February 3, 2020, 18 patients infected with SARS-CoV-2 were diagnosed in Singapore, with symptom onset from January 14 to January 30, 2020. All patients reported travel to Wuhan, China, in the 14 days prior to illness onset	F: 8 M: 8	47	ICU: 2 MV: 1 Death: NR	NR	Singapore National Medical Research Council and the program Combating the Next SARS-or MERS-Like Emerging Infectious Disease Outbreak by Improving Active Surveillance
6	Xu et al ⁵⁰	China	90	Patients with laboratory-identified SARS-CoV-2 infection by real-time PCR were collected between January 23, 2020, and February 4, 2020.	F: 51 M: 39	50	ICU: 1 MV: NR Death: 0	NR	Not declared
7	Liu et al ⁵¹	China	12	Patients were admitted to the Shenzhen Third People's Hospital. Patient respiratory samples, including throat swabs and bronchoalveolar lavage fluid (BALF), were collected and real-time PCR was used to confirm 2019-nCoV infection.	F: 4 M: 8	53.6	ICU: NR MV: 6 Death: NR	ICU: NR MV: 1 Death: NR	National Science and Technology Major Project Chinese Academy of Medical Sciences Innovation Fund for Medical Sciences Shenzhen Science and Technology Research and Development Project China Postdoctoral V Science Foundation
8	Chen et al ⁵²	China	99	Patients from Jan 1 to Jan 20, 2020, at Jinyintan Hospital in Wuhan	F: 32 M: 67	55.5	ICU: NR MV: 17 Death: 11	NR	National Key R&D Program of China
9	Huang et al ⁵³	China	41	Patients with suspected 2019-nCoV were admitted to a designated hospital in Wuhan	F: 11 M: 30	49.0	ICU: 13 MV: 14 Death: 6	NR	Ministry of Science and Technology, Chinese Academy of Medical Sciences National Natural Science Foundation of China, and Beijing Municipal Science and Technology Commission

(Continued)

Table 1. (Continued)

N	AUTHOR AND YEAR	COUNTRY	N	POPULATION	GENDER	AVERAGE AGE	GENERAL CLINICAL OUTCOME	CLINICAL OUTCOMES IN DIABETICS	FUNDING
10	Yang et al ⁶⁴	China	52	The study was done at Wuhan Jin Yin-tan hospital (Wuhan, China), which is a designated hospital to treat patients with SARS-CoV-2 pneumonia	F: 17 M: 35	Divided by groups	ICU: 52 MV: 37 Death: 32	ICU: NR MV: NR Death: 7	Not declared
11	Wang et al ⁶⁵	China	138	All consecutive patients with confirmed NCIP admitted to Zhongnan Hospital of Wuhan University from January 1 to January 28, 2020, were enrolled.	F: 63 M: 75	56	ICU: 36 MV: 17 Death: 6	ICU: 8 MV: NR Death: NR	National Natural Science Foundation and Special Project for Significant New Drug Research and Development in the Major National Science and Technology Projects of China
12	Guan et al ⁶⁶	China	1099	The medical records and compiled data for hospitalized patients and outpatients with laboratory-confirmed Covid-19, as reported to the National Health Commission between December 11, 2019, and January 29, 2020; the data cutoff for the study was January 31, 2020	F: 459 M: 640	47	ICU: 55 MV: 67 Death: 15	NR	National Health Commission of China
13	Zhao et al ⁶⁷	China	37	Patients and healthcare providers with confirmed or suspected 2019-nCoV from Jan 23 to Jan 31, 2020, at Wuhan Union Hospital, Wuhan Children's Hospital, The Central Hospital of Wuhan and Wuhan Fourth Hospital in Wuhan, China.	F: 23 M: 14	41	NR	NR	National Natural Science Foundation of China and National Key Research and Development Project
14	Zhou et al ⁶²	China	191	All adult inpatients (≥18 years old) with laboratory confirmed COVID-19 from Jinyintan Hospital and Wuhan Pulmonary Hospital (Wuhan, China) who had been discharged or had died by Jan 31, 2020.	F: 72 M: 119	56	ICU: 50 MV: 59 Death: 54	ICU: NR MV: NR Death: 17	Chinese Academy of Medical Sciences Innovation Fund for Medical Sciences National Science Grant for Distinguished Young Scholars National Key Research and Development Program of China, The Beijing Science and Technology Project Major Projects of National Science and Technology on New Drug Creation and Development
15	Zhang et al ⁶⁸	China	140	Hospitalized patients (admission date from Jan 16th to Feb 3rd 2020) in No.7 hospital of Wuhan	F: 69 M: 71	57	NR	NR	Not declared

MERS-Cov, Middle East Respiratory Syndrome Coronavirus Disease; SARS-Cov-1, Syndrome Acute Respiratory Syndrome Coronavirus Disease type 1; SARS-Cov-2, Syndrome Acute Respiratory Syndrome Coronavirus Disease type 2; ICU, Intensive Care Unit; MV, mechanical ventilation; NR, not reported; F, female; M, male.

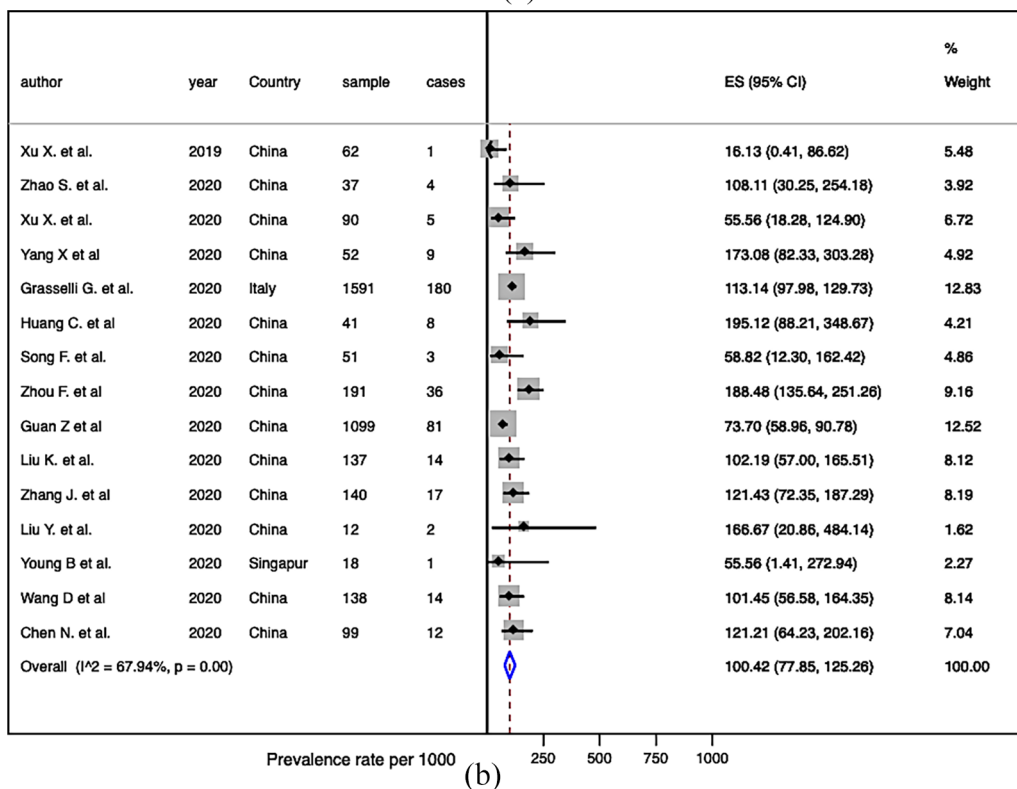
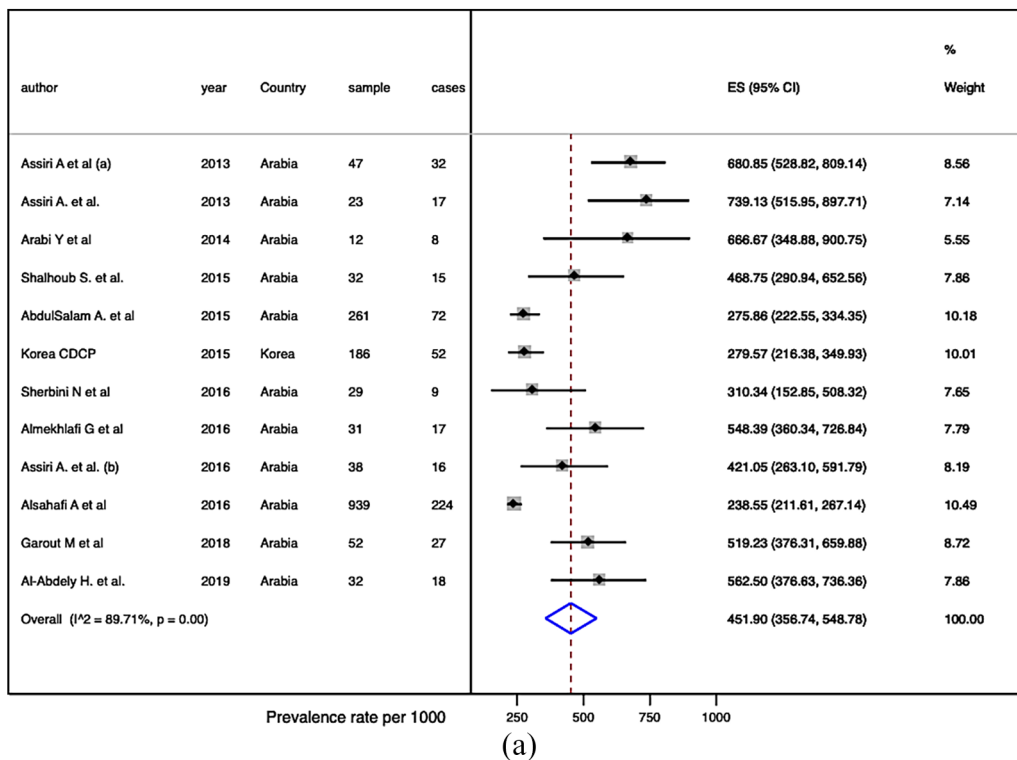


Figure 2. Meta-analysis of the prevalence of diabetes mellitus in patients with acute respiratory syndromes by coronavirus type. (a) Meta-analysis from MERS-Cov studies. (b) Meta-analysis from SARS-Cov-2 studies.

$P = 66.57%$), in studies with a large sample quantity (50 or more subjects) the prevalence was higher (131.50 per 1000, 95% CI: 69.54-206.63, $P = 0%$) than in small sample studies. The DM prevalence was similar according to study design (longitudinal:

100.14 per 1000 and cross-sectional: 104.59) and by the number of centers that participate in the study (single-center: 107.30 per 1000 and multi-center: 93.72 per 1000). The rest of analysis are described in the Table 4.

Table 2. Prevalence of comorbidities and unfavorable outcomes in patients with diabetes mellitus and acute respiratory syndromes for coronavirus disease.

	N	SAMPLE	PREVALENCE ^a	95% CI	I ² %
MERS-Cov					
Death	6	229	356.53	294.45-420.98	0
Mechanical ventilation	1	32	437.50	263.64-623.37	–
ICU admission	2	35	507.95	382.67-632.76	0
SARS-Cov-1					
Death	1	520	55.77	37.66-79.11	–
Mechanical ventilation	0	–	–	–	–
ICU admission	0	–	–	–	–
SARS-Cov-2					
Death	2	716	96.33	61.36-137.66	0
Mechanical ventilation	1	12	83.33	2.11-384.80	–
ICU admission	1	138	57.97	25.36-111.03	–

n, number of studies; CI, confidence interval, I², heterogeneity test; ICU, intensive care unit; MERS-Cov, Middle East Respiratory Syndrome Coronavirus; SARS-Cov-1, Severe Acute Respiratory Syndrome Coronavirus type 1; SARS-Cov-2, Severe Acute Respiratory Syndrome Coronavirus type 2.

^aPrevalence of each adverse outcome per 1000.

Meta-regression

The univariate meta-regression analyses showed that the prevalence of DM and MERS-Cov comorbidity was higher across studies with relatively small sample sizes ($b=0.28$, 95% CI: 0.13–0.43), single-center studies ($b=0.29$, 95% CI: 0.12–0.46), hospital-based studies ($b=0.22$, 95% CI: 0.03–0.41), and studies with convenience sampling method ($b=0.22$, 95% CI: 0.03–0.41). Moreover, we found the quality score influence indirectly the pooled prevalence estimate, meaning for one point increases in the quality score, the estimated prevalence decrease by 8% ($b=-0.08$, 95% CI: –0.12 to –0.03) (Figure 3). The covariate with stronger influence on prevalence was the quality score, the model explained the 100% of the between-study variance and the residual heterogeneity was 0%. We did not implement multivariate model due to the small number of included studies. For the SARS-Cov-2 meta-analysis, none of the variables influenced the pooled prevalence.

Publication bias

In MERS-Cov studies, the funnel plot (Figure 4) shows asymmetry of the estimates suggesting publication bias, although the significance tests have dissociated result (Egger's test $P<.01$, Begg's test $P=.13$). In case of SARS-Cov-2 studies, the funnel plot shows no publication bias and tests have no significant result (Egger's test $P=.88$, Begg's test $P=.88$). The SARS-Cov-1 analysis was not possible because only we had 1 study.

Evidence certainty

Overall, the certainty of the evidence of the pooled prevalence estimates assessed by the GRADE approach was very low (Table 5). No population-based studies were included in either meta-analysis, thus, we started the certainty rating from low certainty. Due to the high risk of bias (75% of included studies were categorized as very low quality), high heterogeneity (I² higher than 60% in both meta-analyses), and publication bias (for MERS-Cov studies), we down rate the certainty to very low, suggesting that the current evidence is very uncertain about the prevalence of DM and coronavirus comorbidity for the three included virus types.

Discussion

The estimated prevalence of DM in patients with acute respiratory syndrome due to coronaviruses is high, roughly 10% to 45%, although from evidence with very low certainty. The estimate varies based on the virus type, with higher prevalence in infected patients by MERS-Cov (451.9 cases per 1000), followed by SARS-Cov-2 (100.42 per 1000), and SARS-Cov-1 (90.38 per 1000). Moreover, the proportion of these patients with reported unfavorable health outcomes is high, predominantly ICU admission, mechanical ventilation use, and deaths. These estimates were higher for MERS-Cov and SARS-Cov-2.

DM are associated with an increased risk of respiratory infections (bacterial or viral) and unfavorable health outcomes after infections, this has been reported for influenza,⁵⁹ pneumococcal,⁶⁰ and tuberculosis⁶¹ infections. In the context of

Table 3. Diabetes mellitus prevalence according to subgroup analysis in patients with MERS-Cov and SARS-Cov infections.

	MERS-COV					SARS-COV						
	N	SAMPLE	PREVALENCE ^a	95% CI	I ² (%)	% WEIGHT	N	SAMPLE	PREVALENCE ^a	95% CI	I ² (%)	% WEIGHT
By sex												
Men	12	1682	666.73	627.43-704.95	35.39	100	15	3758	579.93	486.94-670.24	95.71	100
Women	12	1682	330.91	307.98-354.23	0	100	15	3758	420.07	329.76-513.06	95.71	100
By country												
China	0	-	-	-	-	-	13	2149	101.79	73.42-133.81	70.01	84.91
Arabia	11	1496	475.76	364.06-588.63	90.62	89.99	0	-	-	-	-	-
Singapur	0	-	-	-	-	-	1	18	55.56	1.41-272.94	-	2.27
Korea	1	186	279.57	216.38-349.93	-	10.01	0	-	-	-	-	-
Italy	0	-	-	-	-	-	1	1591	113.14	97.98-129.73	-	12.83

n, number of studies; CI, confidence interval; I², heterogeneity test; MERS-Cov, Middle East Respiratory Syndrome Coronavirus; SARS-Cov-2, Severe Acute Respiratory Syndrome Coronavirus type 2.

^aDiabetes prevalence per 1000.

Table 4. Diabetes mellitus prevalence according to the sensitivity analysis of MERS-Cov and SARS-Cov studies included in the systematic review.

	MERS-COV STUDIES				SARS-COV STUDIES					
	N	PREVALENCE*	95 % CI	I ² (%)	% WEIGHT	N	PREVALENCE*	95 % CI	I ² (%)	% WEIGHT
By quality categories										
Very low (0-2)	9	539.98	452.59-626.24	53.47	69.32	12	111.34	81.62-144.63	66.57	76.83
Low (3-4)	1	279.57	216.38-349.93	-	10.01	3	62.85	14.50-137.51	-	23.17
Moderate (5-6)	2	246.30	222.27-271.14	-	20.67	0	-	-	-	-
By sample size										
< 50 subjects	8	543.94	441.40-644.76	59.09	60.60	11	99.39	75.84-125.58	74.53	87.98
>= 50 subjects	4	302.04	231.45-377.59	83.56	39.40	4	131.50	69.54-206.63	0	12.02
By study design										
Longitudinal	12	451.90	356.74-548.78	89.71	100	11	100.14	73.59-129.97	75.49	78.29
Cross-sectional	0	-	-	-	0	4	104.59	70.58-144.27	0	21.71
By data collection										
Prospective	1	279.57	216.38-349.93	-	10.01	3	136.34	82.83-199.09	-	12.87
Retrospective	11	475.76	364.06-588.63	90.62	89.99	12	95.61	72.24-121.64	71.74	87.13
By number of centers										
Single-center	5	562.57	488.88-634.96	5.22	40.79	8	107.30	77.38-140.98	29.99	45.71
Multi-center	7	358.01	272.42-448.13	84.41	59.21	7	93.72	62.46-130.04	81.59	54.29
By sampling type										
Convenience	10	508.47	392.84-623.66	81.73	79.33	15	100.42	77.85-125.26	67.94	100
Random	2	246.30	222.27-271.14	-	20.67	0	-	-	-	-

n: number of studies, *diabetes prevalence per 1000.
 CI: confidence interval, I²: heterogeneity test.
 MERS-Cov: Middle East Respiratory Syndrome Coronavirus.
 SARS-Cov-2: Severe Acute Respiratory Syndrome Coronavirus type 2.

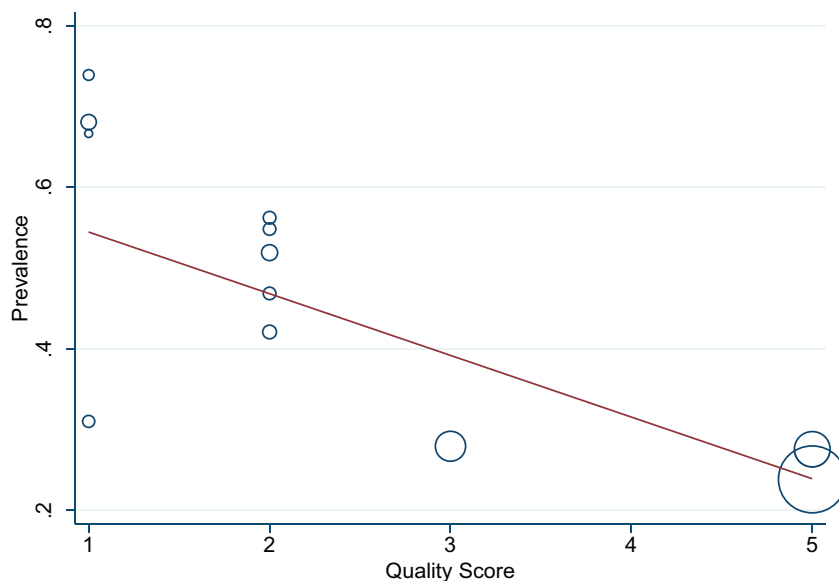


Figure 3. Bubble plot with fitted meta-regression line. The prevalence of DM in patients infected with MERS-Cov (horizontal axis) is presented against the quality score points of the included studies. For each point increase in the quality score the prevalence decreases 8%. The model reported an adjusted R -squared of 100% and a residual I^2 of 0%.

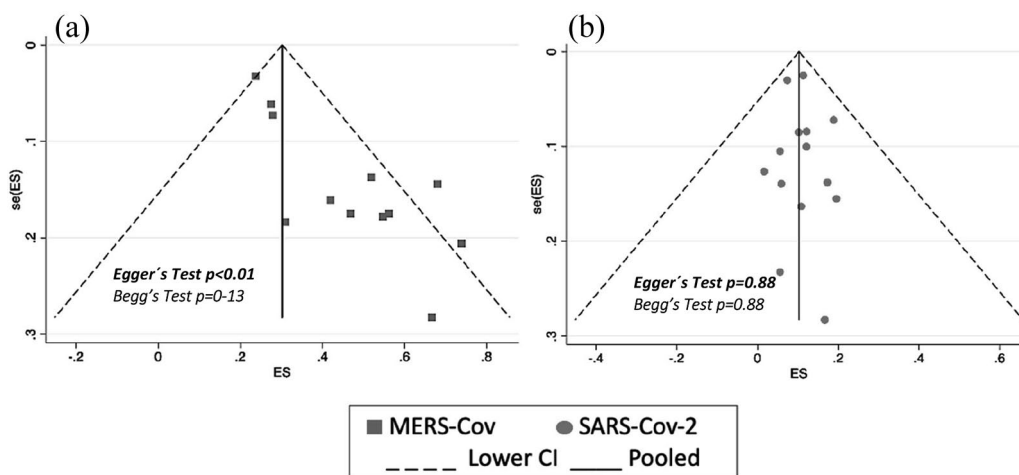


Figure 4. Funnel plot for systematic review on the prevalence of diabetes mellitus by virus type. The effect size (horizontal axis) is presented against the standard error of effect size (ES). (a) Funnel plot of MERS-Cov studies. (b) Funnel plot of SARS-Cov studies.

coronaviruses, this trend is repeated and the infection proportion in diabetic patients is greater than in general population. However, we found that within the coronavirus types, the proportion is different. The prevalence of DM comorbidity was up to 4 times higher in patients infected with MERS-Cov than SARS-Cov-1 or SARS-Cov-2.

We have raised several hypotheses in this regard, one of them is based on the binding protein that each coronavirus uses to enter the cell. In the case of SARS-Cov-1 and SARS-Cov-2, this protein is ACE-2,⁶² which is higher in diabetic patients. For MERS-Cov the binding protein is dipeptidyl peptidase 4 (DPP4),⁶³ which is increased in DM patients as well, but there also other conditions that by themselves increase their expression like all manifestation of metabolic syndrome (obesity, fatty liver disease, and high waist circumference).⁶⁴ Thus, the

synergy of these clinical conditions that usually coexist in the patients with type 2 DM would increase the amount of DPP4 available therefore, it will facilitate the virus binding, making the patient with diabetes more prone to becoming infected by MERS-Cov. Unlike ACE-2 protein, increased DPP4 protein values are associated with impaired immune response⁶⁵ to eliminate MERS-Cov,⁶⁶ this would explain the higher mortality reported.

An alternative explanation is the different regional prevalence of DM. Diabetes prevalence is higher in Arabia (18.2%-31.6%)⁶⁷ than China (4%).⁶⁸ In our study we found 91.67% of MERS-Cov studies were from Arabia (11/12 studies), whereas 100% and 86.67% were from China in SARS-Cov-1 (1 study) and SARS-Cov-2 (13/15 studies), respectively. This notable difference in the prevalence of DM in general population could

Table 5. Summary of findings.

PREVALENCE OF DIABETES MELLITUS IN PATIENTS INFECTED WITH CORONAVIRUSES				
POPULATION: PATIENTS INFECTED WITH CORONAVIRUSES				
OUTCOMES	ANTICIPATED ABSOLUTE EFFECTS (95% CI)		NO. OF PARTICIPANTS (STUDIES)	CERTAINTY OF THE EVIDENCE (GRADE)
	FREQUENCY POOLED (%)	PREVALENCE BY 1000		
Prevalence (SARS-Cov-1)	9.04	90.38 (67.17-118.38)	520 (1 study)	⊕○○○ Very low ^{a,b,c}
Prevalence (MERS-Cov)	45.19	451.9 (356.74-548.78 ^{I²})	1682 (12 studies)	⊕○○○ Very low ^{a,b,c,d}
Prevalence (SARS-Cov-2)	10.04	100.42 (77.85-125.26)	3758 (15 studies)	⊕○○○ Very low ^{a,b,c}

GRADE Working Group grades of evidence

High certainty: We are very confident that the true effect lies close to that of the estimate of the effect

Moderate certainty: We are moderately confident in the effect estimate: The true effect is likely to be close to the estimate of the effect, but there is a possibility that it is substantially different

Low certainty: Our confidence in the effect estimate is limited: The true effect may be substantially different from the estimate of the effect

Very low certainty: We have very little confidence in the effect estimate: The true effect is likely to be substantially different from the estimate of effect

CI, Confidence interval; MERS-Cov, Middle East Respiratory Syndrome Coronavirus; SARS-Cov-1, Severe Acute Respiratory Syndrome Coronavirus type 1; SARS-Cov-2, Severe Acute Respiratory Syndrome Coronavirus type 2.

^aThe certainty rating started from low since no population-based study were found.

^bHigh risk of bias (very low quality by Loney's scale) was detected in most of the included studies (75%), due to the inadequate response rate, case definition, and outcome measurement.

^cHigh inconsistency was detected in both meta-analyses. The calculated I^2 was $>60\%$.

^dPublication bias was detected in MERS-Cov meta-analysis (asymmetrical funnel plot and significant Egger's test).

influence the proportion of patients infected with coronavirus due to patient availability.

In subgroup analysis we found in MERS-Cov studies, the DM prevalence is double in men than women and this is related to the fact, that male have higher risk for develop DM in Arabia where most of the studies come from (11/12 studies, $n = 1496$). The explanation for this fact could be a sub diagnosis of DM due to gender inequalities that do not allow equal access to health.⁶⁹ Furthermore, Saudi women reported greater adherence to diet and exercise than men.⁷⁰ In SARS-Cov-2 studies, the influence of male gender in DM prevalence is present, yet smaller. There are 2 countries (Italy and China) that contribute almost the entirety of the studied sample, that could explain these differences. Italy, with aging population,⁷¹ the higher prevalence of DM is in men⁷² explained by the predisposition to greater central fat deposit in men than in women after 65 years.⁷³ In China, population with a high education level,⁷⁴ there is a direct relationship between obesity and DM with the academic degree in men, and inversely in women.⁷⁵

Since the heterogeneity was high in both meta-analyses, we performed a sensitivity analysis and meta-regression models to assess further causes of inconsistency in the estimated effects. We identify in both analysis that the quality of the studies was the most important cause of heterogeneity (studies with better quality reported small prevalence). Most of the studies were of very low quality with a score of 0-2 (MERS-Cov: 9/12 and SARS-Cov-2: 12/15). These results are expected because our units of analysis were observational studies based on hospital reports during outbreaks. There is no random selection of cases,

nor was the entire population included, and it was not possible to blind the assessors. Regarding the ideal sample size, Loney et al²⁵ considers a size greater than 300 patients adequate, given the context of our study (18/28 studies had a sample of less than 100), we considered a lower threshold (50 participants) so some low-quality studies (score 3-4) could be overestimated. In addition, for the MERS-Cov meta-analysis, we identified the sample size (less than 50, or equal or greater than 50) and the number of centers included in the study (single center vs multicenter studies) were important factors of heterogeneity, the pooled estimate is higher in single-center studies with small sample size. In SARS-Cov-2 meta-analysis, we could not identify the main source of heterogeneity, probably explained by the homogenous design and geographical location of the included studies. These findings highlight the need of high-quality, well-powered, and population-based studies to elucidate the relationship between DM and coronavirus infection. Moreover, the lack of clinical data of the reported DM cases such as glycemic control status, glycosylated hemoglobin values, current treatment, and DM associated comorbidities, prevent a better characterization of the within and between-studies heterogeneity.

Diabetic patients infected with coronavirus have higher rate of unfavorable health outcomes (ICU admission, need for mechanical ventilation, and death) than the general population. We found a pooled mortality rate from 6% to 36%, higher for MERS-Cov infection. For SARS-Cov-2 infection, we found a rate of 10% approximately, this represent the double of current reported values of 5% mortality in overall worldwide population (calculated

with data till Jun 27th, 2020)⁷⁶ SARS-Cov-1 and SARS-Cov-2 bind only to glycosylated ACE-2 receptors,⁷⁷ therefore, the worse the glycemic control, the greater the number of glycosylated receptors and the worse the prognosis.⁷⁸ Furthermore, if we added the well-known maladaptive immune response associated with DM, the health outcomes are much more adverse. These findings are aligned with a recent meta-analysis reporting twice odds (RR 2.12, 95% CI: 1.44-3.11, $P=72\%$) for death and disease severity in DM population with SARS-Cov-2 infection.⁷⁹ Likewise, the scarce clinical characterization of the DM cases infected with coronaviruses hinder the possibility to typify clinical phenotypes with higher or less risk within the subpopulation of DM patients, that could have a great impact in public health policies. We recommend in future studies a complete clinical-pharmacological profile of DM patients infected with coronaviruses, specially SARS-Cov-2 including glycemic control status, comorbidities, treatment regimens and the presence of long-term complications related to DM.

It is important to mention, we included less studies and we found a lower prevalence of DM for hospitalized patients with SARS-Cov-2 compared with other reviews⁸⁰ because the presented proportions are based on report of DM as a diagnosis prior to coronavirus infection. We did not count the studies that reported only hyperglycemia without making the distinction between DM and hyperglycemia from other causes. In SARS-Cov-1 and SARS-Cov-2 infections, the hyperglycemia could be explained by the virus bond to ACE-2 receptors expressed on islet cells of the pancreas, which can cause their inflammation resulting in insulin-dependent hyperglycemia.⁷⁷ This event could be a confounder in the prevalence calculation in previous studies⁶ thus, we followed a strict DM definition criterion to calculate estimates with more precision.

The main limitation of this systematic review is the small number of countries included, which prevents comparisons between regions. However, data from this latest pandemic has not been fully determined due to the recent nature of its presentation. In our review, countries such as France, Spain or the United States were not represented. In other regions, such as South America or the Caribbean, there are issues regarding DM diagnosis, which in many cases is reported as stress-induced hyperglycemia, that could bias the prevalence estimation.

Conclusion and Recommendations

The prevalence of DM in patients with acute respiratory syndrome due coronavirus infection is high (451.9 cases per 1000 infected patients for MERS-Cov, 90.38 per 1000 for SARS-Cov-1 and 100.42 per 1000 for SARS-Cov-2), and the unfavorable health outcomes are frequent in this subset of patients. In the context of the pandemic that we are going through, we recommend that researchers in each country continue to publish well-powered and population-based observational studies including detailed DM clinical characteristics (such as glycemic control, DM complications, and treatment regimens), comorbidities, and evolution of SARS-Cov-2 to reevaluate the worldwide

prevalence of this comorbidity and to typify clinical phenotypes with higher or less risk within the subpopulation of DM patients.

Authors' Contributions

IPT, MFF, and MYA conceptualized the idea; CMM design the search strategy; CGO, CIE, and PZL review the citations and extracted the data; IPT, CAD, MYA, and KPB made the statistical analysis; IPT, MFF, MYA, CAD, CMR, CGO, PLZ, CIE, and KPB wrote the first draft; and all authors interpreted the results, and reviewed and approved the final manuscript.

Contribution to the Field Statement

Three of the 7 coronaviruses (MERS-Cov, SARS-Cov-1, SARS-Cov-2) can cause respiratory infections in humans, much more severe and even sometimes fatal than the other coronaviruses. These viruses have caused major outbreaks of deadly pneumonia in the 21st century. According to WHO data, there are 415 million people with diabetes mellitus. People with this disease have chronic low-grade inflammation, leading to immune dysfunction, microvascular and macrovascular complications; therefore, they may have an increased risk of coronavirus infection and its complications.

The present study reports the prevalence of diabetes mellitus in patients with acute respiratory syndrome for coronavirus and its associated unfavorable outcomes. In addition, we hypothesize the possible causes for the different prevalence of diabetes among the virus types based on pathophysiological explanations. Moreover, we explored the between-study heterogeneity with subgroup, sensitivity, and meta-regression analyses. Finally, we suggested recommendations for future studies addressing this question.

ORCID iDs

Isabel Pinedo-Torres  <https://orcid.org/0000-0003-4618-5103>

Claudia Gutierrez-Ortiz  <https://orcid.org/0000-0002-7151-8793>

Supplemental Material

Supplemental material for this article is available online.

REFERENCES

- Seah I, Agrawal R. Can the coronavirus disease 2019 (COVID-19) affect the eyes? A review of coronaviruses and ocular implications in humans and animals. *Ocul Immunol Inflamm*. 2020;28:391-395.
- Al-Osail AM, Al-Wazzah MJ. The history and epidemiology of Middle East respiratory syndrome corona virus. *Multidiscip Respir Med*. 2017;12:20.
- Ceccarelli M, Berretta M, Venanzi Rullo E, Nunnari G, Cacopardo B. Differences and similarities between severe acute respiratory syndrome (SARS)-Coronavirus (CoV) and SARS-CoV-2. Would a rose by another name smell as sweet? *Eur Rev Med Pharmacol Sci*. 2020;24:2781-2783.
- da Costa VG, Moreli ML, Saivish MV. The emergence of SARS, MERS and novel SARS-2 coronaviruses in the 21st century. *Arch Virol*. 2020;165:1517-1526.
- WHO. *WHO timeline - COVID-19*. World Health Organization. May 2, 2020. <https://www.who.int/news-room/detail/27-04-2020-who-timeline---covid-19>. Updated 27 April 2020. Accessed May 2, 2020.
- Yang J, Zheng Y, Gou X, et al. Prevalence of comorbidities and its effects in coronavirus disease 2019 patients: a systematic review and meta-analysis. *Int J Infect Dis*. 2020;94:91-95.

7. Adhikari SP, Meng S, Wu YJ, et al. Epidemiology, causes, clinical manifestation and diagnosis, prevention and control of coronavirus disease (COVID-19) during the early outbreak period: a scoping review. *Infect Dis Poverty*. 2020;9:29.
8. Shitao R, Alexandria L, Hon-Cheong S. Exploring diseases/traits and blood proteins causally related to expression of ACE2, the putative receptor of 2019-nCoV: a Mendelian randomization analysis. *Diabetes Care*. 2020;43:1416-1426.
9. Lukassen S, Chua RL, Trefzer T, et al. SARS-CoV-2 receptor ACE2 and TMPRSS2 are primarily expressed in bronchial transient secretory cells. *EMBO J*. 2020;39:e105114.
10. Kulcsar KA, Coleman CM, Beck SE, Frieman MB. Comorbid diabetes results in immune dysregulation and enhanced disease severity following MERS-CoV infection. *JCI Insight*. 2019;4:e131774.
11. Chen X, Hu W, Ling J, et al. Hypertension and diabetes delay the viral clearance in COVID-19 patients. *medRxiv*. 2020.
12. Guo L, Wei D, Zhang X, et al. Clinical features predicting mortality risk in patients with viral pneumonia: the MuLBSTA score. *Front Microbiol* 2019;10:2752.
13. Hussain A, Bhowmik B, do Vale Moreira NC. COVID-19 and diabetes: knowledge in progress. Review. *Diabetes Res Clin Pract*. 2020;162:108142.
14. Kim KD, Zhao J, Auh S, et al. Adaptive immune cells temper initial innate responses. *Nat Med*. 2007;13:1248-1252.
15. Yang JK, Lin SS, Ji XJ, Guo LM. Binding of SARS coronavirus to its receptor damages islets and causes acute diabetes. *Acta Diabetol*. 2010;47:193-199.
16. Fang L, Karakiulakis G, Roth M. Are patients with hypertension and diabetes mellitus at increased risk for COVID-19 infection? *Lancet Respir Med*. 2020;8:e21.
17. Halim AA, Alsayed B, Embarak S, Yaseen T, Dabbous S. Clinical characteristics and outcome of ICU admitted MERS corona virus infected patients. *Egypt J Chest Dis Tuberc*. 2016;65:81-87.
18. Al-Abdely HM, Midgley CM, Alkhamis AM, et al. Middle East respiratory syndrome coronavirus infection dynamics and antibody responses among clinically diverse patients, Saudi Arabia. *Emerg Infect Dis*. 2019;25:753-766.
19. Matsuyama R, Nishiura H, Kutsuna S, Hayakawa K, Ohmagari N. Clinical determinants of the severity of Middle East respiratory syndrome (MERS): a systematic review and meta-analysis. *BMC Public Health*. 2016;16:1203.
20. Grasselli G, Zangrillo A, Zanella A, et al. Baseline characteristics and outcomes of 1591 patients infected with SARS-CoV-2 admitted to ICUs of the Lombardy region, Italy. *JAMA*. 2020;323:1574-1581.
21. Cariou B, Hadjadj S, Wargny M, et al. Phenotypic characteristics and prognosis of inpatients with COVID-19 and diabetes: the CORONADO study. *Diabetologia*. 2020;63:1500-1515.
22. Zhou F, Yu T, Du R, et al. Clinical course and risk factors for mortality of adult inpatients with COVID-19 in Wuhan, China: a retrospective cohort study. *Lancet (London, England)*. 2020;395:1054-1062.
23. Koye DN, Magliano DJ, Nelson RG, Pavkov ME. The global epidemiology of diabetes and kidney disease. *Adv Chronic Kidney Dis*. 2018;25:121-132.
24. Moher D, Liberati A, Tetzlaff J, Altman DG, The PG. Preferred reporting items for systematic reviews and meta-analyses: the PRISMA statement. *PLoS Med*. 2009;6:e1000097.
25. Loney PL, Chambers LW, Bennett KJ, Roberts JG, Stratford PW. Critical appraisal of the health research literature: prevalence or incidence of a health problem. *Chronic Dis Can*. 1998;19:170-176.
26. DerSimonian R, Laird N. Meta-analysis in clinical trials. *Controlled Clin Trials*. 1986;7:177-188.
27. Freeman MF, Tukey JW. Transformations related to the angular and the square root. *Ann Math Statist*. 1950;21:607-611.
28. Barendregt JJ, Doi SA, Lee YY, Norman RE, Vos T. Meta-analysis of prevalence. *J Epidemiol Community Health*. 2013;67:974.
29. Harbord RM, Higgins JPT. Meta-regression in Stata. *Stata J*. 2008;8:493-519.
30. Thompson SG, Higgins JPT. How should meta-regression analyses be undertaken and interpreted? *Stat Med*. 2002;21:1559-1573.
31. Higgins J, Thomas J, Chandler J, et al, ed. *Cochrane Handbook for Systematic Reviews of Interventions Version 6.0 (updated July 2019)*. The Cochrane Collaboration; 2019. <https://training.cochrane.org/handbook/archive/v5.1/>.
32. Balslem H, Helfand M, Schünemann HJ, et al. GRADE guidelines: 3. Rating the quality of evidence. *J Clin Epidemiol*. 2011;64:401-406.
33. Schünemann H, Brożek J, Guyatt G, Oxman A. *GRADE Handbook for Grading Quality of Evidence and Strength of Recommendation. Version 3.2*. The GRADE Working Group; 2013.
34. Assiri A, Al-Tawfiq JA, Al-Rabeeh AA, et al. Epidemiological, demographic, and clinical characteristics of 47 cases of Middle East respiratory syndrome coronavirus disease from Saudi Arabia: a descriptive study. *Lancet Infect Dis*. 2013;13:752-761.
35. Assiri A, McGeer A, Perl TM, et al. Hospital outbreak of Middle East respiratory syndrome coronavirus. *N Engl J Med*. 2013;369:407-416.
36. Arabi YM, Arifi AA, Balkhy HH, et al. Clinical course and outcomes of critically ill patients with Middle East respiratory syndrome coronavirus infection. *Ann Intern Med*. 2014;160:389-397.
37. Shalhoub S, Farahat F, Al-Jiffri A, et al. IFN-alpha2a or IFN-beta1a in combination with ribavirin to treat Middle East respiratory syndrome coronavirus pneumonia: a retrospective study. *J Antimicrob Chemother*. 2015;70:2129-2132.
38. Noorwali AA, Turkistani AM, Asiri SI, et al. Descriptive epidemiology and characteristics of confirmed cases of Middle East respiratory syndrome coronavirus infection in the Makkah Region of Saudi Arabia, March to June 2014. *Ann Saudi Med*. 2015;35:203-209.
39. KCDCP KCfDCaP. Middle East respiratory syndrome coronavirus outbreak in the Republic of Korea, 2015. *Osong Public Health Res Perspect*. 2015;6:269-278.
40. Sherbini N, Iskandrani A, Kharaba A, Khalid G, Abduljawad M, Al-Jahdali H. Middle East respiratory syndrome coronavirus in Al-Madinah City, Saudi Arabia: demographic, clinical and survival data. *J Epidemiol Glob Health*. 2017;7:29-36.
41. Assiri A, Abedi GR, Bin Saeed AA, et al. Multifacility outbreak of Middle East respiratory syndrome in Taif, Saudi Arabia. *Emerg Infect Dis*. 2016;22:32-40.
42. Alsaahaj AJ, Cheng AC. The epidemiology of Middle East respiratory syndrome coronavirus in the Kingdom of Saudi Arabia, 2012-2015. *Int J Infect Dis*. 2016;45:1-4.
43. Almekhlafi GA, Albarrak MM, Mandourah Y, et al. Presentation and outcome of Middle East respiratory syndrome in Saudi intensive care unit patients. *Crit Care (London, England)*. 2016;20:123.
44. Garout MA, Jokhdar HAA, Aljahdali IA, Zein AR, Goweda RA, Hassan-Hussein A. Mortality rate of ICU patients with the Middle East respiratory syndrome - coronavirus infection at King Fahad Hospital, Jeddah, Saudi Arabia. *Cent Eur J Public Health*. 2018;26:87-91.
45. Yang JK, Feng Y, Yuan MY, et al. Plasma glucose levels and diabetes are independent predictors for mortality and morbidity in patients with SARS. *Diabet Med*. 2006;23:623-628.
46. Xu XW, Wu XX, Jiang XG, et al. Clinical findings in a group of patients infected with the 2019 novel coronavirus (SARS-CoV-2) outside of Wuhan, China: retrospective case series. *BMJ*. 2020;368:m606.
47. Liu K, Fang YY, Deng Y, et al. Clinical characteristics of novel coronavirus cases in tertiary hospitals in Hubei Province. *Chin Med J (Engl)*. 2020;133:1025-1031.
48. Song F, Shi N, Shan F, et al. Emerging 2019 novel coronavirus (2019-nCoV) pneumonia. *Radiology*. 2020;295:210-217.
49. Young BE, Ong SWX, Kalimuddin S, et al. Epidemiologic features and clinical course of patients infected with SARS-CoV-2 in Singapore. *JAMA*. 2020;323:1488-1494.
50. Xu X, Yu C, Qu J, et al. Imaging and clinical features of patients with 2019 novel coronavirus SARS-CoV-2. *Eur J Nucl Med Mol Imaging*. 2020;47:1275-1280.
51. Liu Y, Yang Y, Zhang C, et al. Clinical and biochemical indexes from 2019-nCoV infected patients linked to viral loads and lung injury. *Sci China Life Sci*. 2020;63:364-374.
52. Chen N, Zhou M, Dong X, et al. Epidemiological and clinical characteristics of 99 cases of 2019 novel coronavirus pneumonia in Wuhan, China: a descriptive study. *Lancet (London, England)*. 2020;395:507-513.
53. Huang C, Wang Y, Li X, et al. Clinical features of patients infected with 2019 novel coronavirus in Wuhan, China. *Lancet (London, England)*. 2020;395:497-506.
54. Yang X, Yu Y, Xu J, et al. Clinical course and outcomes of critically ill patients with SARS-CoV-2 pneumonia in Wuhan, China: a single-centered, retrospective, observational study. *Lancet Respir Med*. 2020;8:475-481.
55. Wang D, Hu B, Hu C, et al. Clinical characteristics of 138 hospitalized patients with 2019 novel coronavirus-infected pneumonia in Wuhan, China. *JAMA*. 2020;323:1061-1069.
56. Guan WJ, Ni ZY, Hu Y, et al. Clinical characteristics of coronavirus disease 2019 in China. *N Engl J Med*. 2020;382:1708-1720.
57. Zhao S, Ling K, Yan H, et al. Anesthetic management of patients with COVID 19 infections during emergency procedures. *J Cardiothorac Vasc Anesth*. 2020;34:1125-1131.
58. Zhang JJ, Dong X, Cao YY, et al. Clinical characteristics of 140 patients infected with SARS-CoV-2 in Wuhan, China. *Allergy*. 2020;75:1730-1741.
59. Goeijenbier M, van Sloten TT, Slobbe L, et al. Benefits of flu vaccination for persons with diabetes mellitus: a review. *Vaccine*. 2017;35:5095-5101.
60. Torres A, Blasi F, Dartois N, Akova M. Which individuals are at increased risk of pneumococcal disease and why? Impact of COPD, asthma, smoking, diabetes, and/or chronic heart disease on community-acquired pneumonia and invasive pneumococcal disease. *Thorax*. 2015;70:984-989.
61. Ayelign B, Negash M, Genetu M, Wondmagegn T, Shibabaw T. Immunological impacts of diabetes on the susceptibility of mycobacterium tuberculosis. *J Immunol Res*. 2019;2019:6196532.
62. Drucker DJ. Coronavirus infections and type 2 diabetes-shared pathways with therapeutic implications. *Endocr Rev*. 2020;41:bnaa011.
63. Raj VS, Mou H, Smits SL, et al. Dipeptidyl peptidase 4 is a functional receptor for the emerging human coronavirus-EMC. *Nature*. 2013;495:251-254.
64. Bassendine MF, Bridge SH, McCaughan GW, Gorrell MD. COVID-19 and comorbidities: a role for dipeptidyl peptidase 4 (DPP4) in disease severity? *J Diabetes*. 2020;12:649-658.

65. Iacobellis G. COVID-19 and diabetes: can DPP4 inhibition play a role? *Diabetes Res Clin Pract.* 2020;162:108125.
66. Al-Omari A, Rabaan AA, Salih S, Al-Tawfiq JA, Memish ZA. MERS coronavirus outbreak: implications for emerging viral infections. *Diagn Microbiol Infect Dis.* 2019;93:265-285.
67. Alotaibi A, Perry L, Gholizadeh L, Al-Ganmi A. Incidence and prevalence rates of diabetes mellitus in Saudi Arabia: an overview. *J Epidemiol Glob Health.* 2017;7:211-218.
68. Wang L, Gao P, Zhang M, et al. Prevalence and ethnic pattern of diabetes and prediabetes in China in 2013. *JAMA.* 2017;317:2515-2523.
69. Daoud F, El Bcheraoui C, Tuffaha M, et al. The health status of Saudi women: findings from a national survey. *J Public Health.* 2015;38:660-672.
70. Albargawi M, Snethen J, Gannass AAL, Kelber S. Perception of persons with type 2 diabetes mellitus in Saudi Arabia. *Int J Nurs Sci.* 2016;3:39-44.
71. Mazzola P, Rimoldi SM, Rossi P, et al. Aging in Italy: the need for new welfare strategies in an old country. *Gerontologist.* 2016;56:383-390.
72. Gnani R, Migliardi A, Maggini M, Costa G. Prevalence of and secular trends in diagnosed diabetes in Italy: 1980–2013. *Nutr Metab Cardiovasc Dis.* 2018;28:219-225.
73. Gale EA, Gillespie KM. Diabetes and gender. *Diabetologia.* 2001;44:3-15.
74. Jia Q, Ericson DP. Equity and access to higher education in China: lessons from Hunan province for university admissions policy. *Int J Educ Dev.* 2017;52:97-110.
75. Wu H, Bragg F, Yang L, et al. Sex differences in the association between socioeconomic status and diabetes prevalence and incidence in China: cross-sectional and prospective studies of 0.5 million adults. *Diabetologia.* 2019;62:1420-1429.
76. Johns Hopkins University of M. COVID-19 dashboard by the Center for Systems Science and Engineering (CSSE) at Johns Hopkins University (JHU). Coronavirus Resource Center. <https://coronavirus.jhu.edu/map.html>
77. Brufsky A. Hyperglycemia, hydroxychloroquine, and the COVID-19 pandemic. *J Med Virol.* 2020;92:770-775.
78. Ceriello A. Hyperglycemia and the worse prognosis of COVID-19. Why a fast blood glucose control should be mandatory. *Diabetes Res Clin Pract.* 2020;163:108186.
79. Huang I, Lim MA, Pranata R. Diabetes mellitus is associated with increased mortality and severity of disease in COVID-19 pneumonia – A systematic review, metaanalysis, and meta-regression. *Diabetes Metab Syndr.* 2020;14:395-403.
80. Wang X, Wang S, Sun L, Qin G. Prevalence of diabetes mellitus in 2019 novel coronavirus: a meta-analysis. *Diabetes Res Clin Pract.* 2020;164:108200.