

RESEARCH ARTICLE

Allelic Exclusion of TCR α -Chains upon Severe Restriction of $V\alpha$ Repertoire

Vasily Rybakin^{1,2}, Luise Westernberg², Guo Fu^{2^{na}}, Hee-Ok Kim^{2^{nb}}, Jeanette Ampudia^{2^{nc}}, Karsten Sauer^{2,3}, Nicholas R. J. Gascoigne^{1,2*}

1. Department of Microbiology, Yong Loo Lin School of Medicine, National University of Singapore, 5 Science Drive 2, Singapore 117545, Singapore, 2. Department of Immunology and Microbial Science, The Scripps Research Institute, 10550 North Torrey Pines Road, La Jolla, CA 92037, United States of America, 3. Department of Cell Biology, The Scripps Research Institute, 10550 North Torrey Pines Road, La Jolla, CA 92037, United States of America

*micnrjg@nus.edu.sg

^{na} Current address: State Key Laboratory of Cellular Stress Biology, Innovation Center for Cell Biology, School of Life Sciences, Xiamen University, Fujian 361102, China

^{nb} Current address: T Cell Biology, Pohang University of Science and Technology (POSTECH) Biotech Center Rm 207, Pohang Univ of Science & Tech San 31 Hyoja-dong Namgu, Pohang 790–784, Republic of Korea

^{nc} Current address: Takeda Pharmaceutical Company, San Diego, CA 92121, United States of America



CrossMark
click for updates

OPEN ACCESS

Citation: Rybakin V, Westernberg L, Fu G, Kim H-O, Ampudia J, et al. (2014) Allelic Exclusion of TCR α -Chains upon Severe Restriction of $V\alpha$ Repertoire. PLoS ONE 9(12): e114320. doi:10.1371/journal.pone.0114320

Editor: Derya Unutmaz, New York University, United States of America

Received: April 24, 2013

Accepted: November 7, 2014

Published: December 12, 2014

Copyright: © 2014 Rybakin et al. This is an open-access article distributed under the terms of the [Creative Commons Attribution License](https://creativecommons.org/licenses/by/4.0/), which permits unrestricted use, distribution, and reproduction in any medium, provided the original author and source are credited.

Funding: Supported by NIH grants GM065230 and GM048002 and by National University of Singapore. The content is solely the responsibility of the authors and does not necessarily represent the official views of the National Institute of General Medical Sciences or the National Institutes of Health, nor of NUS. The funders had no role in study design, data collection and analysis, decision to publish, or preparation of the manuscript. This is TSRI manuscript number 24007.

Competing Interests: The authors have declared that no competing interests exist.

Abstract

Development of thymocytes through the positive selection checkpoint requires the rearrangement and expression of a suitable T cell receptor (TCR) α -chain that can pair with the already-expressed β -chain to make a TCR that is selectable. That is, it must have sufficient affinity for self MHC-peptide to induce the signals required for differentiation, but not too strong so as to induce cell death. Because both alleles of the α -chain continue to rearrange until a positively-selectable heterodimer is formed, thymocytes and T cells can in principle express dual α -chains. However, cell-surface expression of two TCRs is comparatively rare in mature T cells because of post-transcriptional regulatory mechanisms termed “phenotypic allelic exclusion”. We produced mice transgenic for a rearranged β -chain and for two unrearranged α -chains on a genetic background where endogenous α -chains could not be rearranged. Both $V\alpha 3.2$ and $V\alpha 2$ containing α -chains were efficiently positively selected, to the extent that a population of dual α -chain-bearing cells was not distinguishable from single α -chain-expressors. Surprisingly, $V\alpha 3.2$ -expressing cells were much more frequent than the $V\alpha 2$ transgene-expressing cells, even though this $V\alpha 3.2$ - $V\beta 5$ combination can reconstitute a known selectable TCR. In accord with previous work on the $V\alpha 3$ repertoire, T cells bearing $V\alpha 3.2$ expressed from the rearranged minilocus were predominantly selected into the CD8⁺ T cell subpopulation. Because of the dominance of $V\alpha 3.2$ expression over $V\alpha 2$ expressed from the miniloci, the peripheral T cell population was predominantly CD8⁺ cells.

Introduction

Allelic exclusion of T cell receptor (TCR) genes is regulated differently for the α and β -chains [1–3]: for the β -chain, rearrangement stops when the cell detects a productively rearranged membrane-bound β -chain protein associated with pre-T α , leading to downregulation of *Rag1/2* gene expression. Thus only one of the β -chain loci is capable of producing full-length, correctly rearranged, β -chain mRNA and therefore protein. In contrast, the TCR α -chain gene does not cease rearranging until the developing T cell undergoes positive selection. During the CD4⁺8⁺ “double positive” (DP) stage of thymocyte development, both of the α -chain alleles rearrange until a positively-selectable heterodimer is formed with the previously-formed β -chain [4], leading to *Rag1/2*-turnoff which stops further rearrangement [5–7]. Immature thymocytes (DP, TCR^{lo}) frequently express dual α -chains on the cell surface, but almost all mature (DP, or SP, TCR^{hi}) thymocytes express a single $\alpha\beta$ -combination [8, 9], in what has been termed phenotypic allelic exclusion [1, 10].

Similarly, most peripheral T cells express a single α -chain on the cell surface, despite frequently (20–30%) having two functionally rearranged and expressed α -chain genes. Estimates of the number of peripheral T cells expressing two cell surface α -chains vary widely from <5% to 15% [10–13] in mice, and 30% in humans [14]. The dual receptor cells can cause autoimmunity in some systems [15, 16] or be highly alloreactive [17], although other reports did not find them to increase susceptibility to autoimmunity [11, 18]. They have also been reported to usefully increase the TCR repertoire [19].

A post-translational mechanism ensures that only one α -chain is generally present on the cell surface of mature T cells [1, 9, 10, 20]. This is caused by selective lack of expression of one of the α -chains on the cell surface [9, 10]. This mechanism also operates in transgenic mice expressing two $\alpha\beta$ TCRs [21, 22], where it can also regulate β -chain expression [23]. Several mechanisms were proposed to account for this phenomenon, including competition between the α -chains for the β -chain, and “selective retention” of the selectable α -chain on the cell surface [1, 8, 9]. Support for the selective retention model and against α -chain competition models has been obtained [24].

The comparative rarity of cells expressing any individual TCR V α -region and the lack of suitable reagents, have made it difficult to study TCR α -chain allelic exclusion in thymocytes. Specifically, there are still only mAbs against four mouse V α -regions: the V α 2 family, V α 3.2, V α 11.1/11.2, and some members of the V α 8 family. There is no anti-C α mAb that can be used to stain live cells for flow cytometry, and no allelic differences between the C α -regions of different mouse strains. We therefore decided to make a mouse that can express a diverse repertoire limited to two V α -regions, as a tool to allow us to study phenotypic allelic exclusion in the thymus. The ultimate goal of this project was to create a mouse model for allelic inclusion of TCR α -chains, which would permit isolation of sufficient numbers of dual α -chain expressing cells for biochemical and cell

biological analysis of posttranslational events resulting in the selective retention of a single α -chain.

Using V α 3.2 and V α 2 miniloci, each with two different J-region elements, we found that both the V α 3.2 and V α 2 containing α -chains had a strong ability to be positively selected with either a rearranged V β 5-containing transgene or the natural repertoire of TCR β -chains. As a result, we were unable to find significant numbers of cells that had rearranged and expressed both minigenes, and were therefore unable to detect significant phenotypic allelic exclusion. We did however find that T cells with the V α 3.2 minilocus-derived α -chain repertoire dominated the V α 2-bearing cells in number. Presumably because of the natural ability of V α 3.2 to skew development of CD8 T cells [25–27], this also selected strongly for a CD8⁺ T cell-dominated repertoire.

Materials and Methods

Ethics statement

Animal work was performed at TSRI and was approved by the Institutional animal care and use committee of TSRI (protocol #06-0340).

Mice

C57BL/6 (B6) (CD45.2), B6.SJL-*Ptprca*^a *Pep3*^b/BoyJ (CD45.1), and MHC^{o/o} β 2-microglobulin^{-/-}, A β ^{b-/-}, CD45.2) mice were bred and maintained at the TSRI animal facility. V α 2 minilocus mouse was obtained from M. Correia-Neves (Life and Health Sciences Research Institute (ICVS), Braga, Portugal), D. Mathis, and C. Benoist (Harvard Medical School). The V α 3.2 minilocus mouse (Va3Var) was made at TSRI. (*Tcra*^{-/-}) were originally obtained from Jackson labs. The V β 5 TCR transgenic line was obtained from Dr Pamela Fink, (University of Washington). V α 2 V α 3.2 V β 5 *Tcra*^{-/-} mice are herein referred to as “triple-transgenic”.

Antibodies and flow cytometry

Antibody against V α 2 (clone B20.1) [28] was from eBioscience. Antibodies against V α 3.2 (clone RR3-16) [29] and V β 5 (clone MR9-4) were from BD Biosciences. Cells were analyzed using LSRII flow cytometer (BD).

Bone marrow reconstitution

Bone marrow cells were isolated from donor mice, and 2×10^6 bone marrow cells were injected i.v. into lethally irradiated (11 Gy in two equally split doses) CD45.1 and MHC^{o/o} recipient mice. Thymocytes were analyzed 8 weeks post-reconstitution.

OP9-DL1 co-culture system

OP9-DL1 cells ([30, 31], kind gift from Dr. J.C. Zúñiga-Pflücker) were seeded at 8,000 cells/well in 24 well plates and cultured in alpha-MEM supplemented with 15% fetal calf serum for 24 hrs prior to thymocyte seeding. Thymocytes were depleted using biotinylated anti-CD4/CD8/CD3 and Lineage Cocktail (CD11c, CD11b, CD19, Ter119, DX5, Gr1, Gl3), followed by anti-biotin beads and passage through Miltenyi LS columns. Remaining immature DN thymocytes were added (80,000 cells per well) to the OP9-DL1 cultures, and incubated as before with the addition of 1 ng/ml of IL-7 (Preprotech). Cells were analyzed 5 days later.

Results and Discussion

Transgenic TCR V α 3.2 minilocus

In order to produce a mouse with the ability to make two independent TCR α -chains to allow us to study allelic exclusion, we made use of a TCR α -chain minilocus transgene that allows a V α 2 gene to recombine with J α 26 or J α 2 [32]. Specifically, this is the V α 2.3 (TRAV14-1) variable region exon, which is the same V α gene used in the MHC class I-restricted OT-I TCR [33]. When bred to the α -chain knockout (*Tcra*^{-/-}) background, this mouse (called “Va2Var”) makes a very limited TCR α repertoire, but with a good degree of diversity in CDR3 α [32]. The minilocus construct is based on an earlier vector for making TCR transgenes that uses a natural V α -promoter [34], such that the transgene is rearranged and expressed at the correct developmental stage. The V α 2 minilocus-derived TCR is expressed in both CD4 and CD8 subsets, with a slight bias to CD4s, although when bred to the V β 5-containing OT-I TCR β -chain transgene, its expression is skewed to the CD8 cells [32].

We replaced the V α 2 gene with a V α 3 gene (specifically V α 3.2 (TRAV9D-4)) flanked by appropriate recombination signal sequences. With the resulting construct, we made transgenic mice on the B6 background. V α 3.2 was chosen because a good antibody against this V-region exists, and because earlier studies showed that normal V α 3.2 is preferentially expressed in CD8 T cells [25, 27, 29].

We obtained several transgenic founder lines. These were characterized for expression of V α 3.2 and the number of copies of the transgene was estimated by Southern blotting (Table 1). Those with several copies of the transgene (lines #16, 17, and 20) expressed significantly more V α 3.2 in peripheral blood T cells than B6 mice. Line #8 had a single copy of the transgene and expressed about twice the normal amount of V α 3.2 (Table 1). The Line #8 V α 3.2 minilocus mice were bred to the V α 2 minilocus mice on the *Tcra*^{-/-} background, with or without the V β 5 OT-I β -chain transgene.

The data in Table 1 also confirmed our previous work showing that V α 3.2 is preferentially selected into the CD8 subset of T cells [25–27], as there were about 3.4-fold more V α 3.2⁺ cells in the CD8 subset than the CD4 subset, in each of the V α 3.2 minilocus strains.

Table 1. Expression of V α 3.2 and V α 2 in V α 3.2 minigene transgenic mouse lines.

Line #	V α 3 transgene copy number	% V α 3.2 in CD4	% V α 3.2 in CD8	% V α 2 in CD4	% V α 2 in CD8
Non-transgenic	-	1.2	4.7	13.2	8.5
8	1	2.7	9.3	13.7	8.3
16	~7	11.5	38.0	12.6	6.1
17	>10	8.9	30.6	13.0	7.1
20	5	5.4	19.5	12.7	7.1

doi:10.1371/journal.pone.0114320.t001

Preferential selection of V α 3.2⁺ T cells over V α 2⁺ T cells

We tested expression of V α 2, V α 3.2 and V α 5 in mice transgenic for the two V α miniloci and deficient in endogenous α -chain expression (*Tcra*^{-/-}), and in the presence or absence of the OT-I V β 5 transgene. In WT B6 mice, V α 2 is expressed in about 12% of T cells, and V α 3.2 in about 2%. However, in the dual minilocus mice, V α 3.2 was much more prevalent than V α 2, whether or not the β -chain transgene was expressed (Fig. 1A,B). Given that the V α 2 minilocus can preferentially reconstitute the OT-I TCR with this β -chain transgene [32], it was a surprise to find such a low representation of the V α 2⁺ cells in the mice expressing the OT-I β -chain. In the WT B6 mice, V α 2 was the more frequently expressed protein, particularly in CD4⁺ cells (Fig. 1B), but the presence of the V α 3.2 minilocus strongly favored V α 3.2 expression, especially among the CD8⁺ cells (Fig. 1B). Analysis of peripheral T cells failed to reveal any significant enrichment of dual V α expressing cells (Figs. 1 and 2). It was recently noted that the V α 2-V β 5 combination is disfavored when V α 2 can “choose” a different V β element than V β 5 [35].

When lymph node T cells from mice expressing both miniloci as their only α -chains were gated for expression of each of the V α -regions, the normal CD4-skewing of V α 2⁺ cells was reduced to close to 1:1 (Fig. 3A, left panels). When the V β 5 transgene was also present (bottom left panel), skewing was reversed so that the majority of V α 2⁺ cells were CD8⁺. This is as expected from earlier work where V α 2 expression occurred predominantly in the CD4⁺ compartment in B6 mice [28, 36], was roughly equally expressed in CD4⁺ and CD8⁺ T cells in the V α 2 minilocus (V α 2Var) mouse, and was skewed to CD8⁺ cells when the OT-I V β 5 transgene was coexpressed with the V α 2 minilocus (“Limited mouse”) [32]. V α 3.2 expression in the minilocus mice was even more strongly skewed to the CD8 subset than in WT (Fig. 3A, right panels), and this bias was almost absolute in the double-minilocus, V β 5 transgene-expressing mice (bottom right panel). These effects were reflected in the CD8:CD4 ratio (Fig. 3B). This ratio is less than 1:1 in B6 lymph nodes [36]. The V α 3.2 minilocus caused the ratio to increase to ~4:1, but expression of the V β 5 transgene massively increased the ratio to over 30:1. Similarly the V α 2 minilocus plus the V β 5 transgene skewed the population to more than a 10-fold excess of CD8 T cells. This is not surprising given that the OT-I TCR transgene causes development of predominantly CD8⁺ mature T cells, but it is perhaps surprising that the V α 3.2 minilocus had an even stronger impact

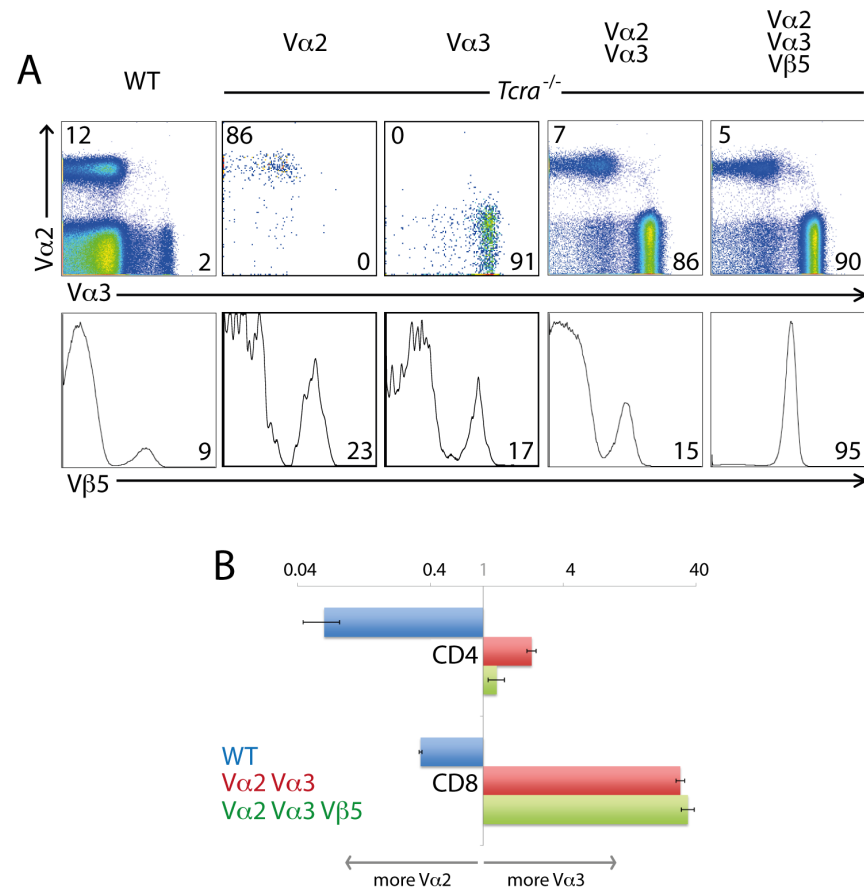


Fig. 1. $V\alpha 3.2$ -expressing T cells are more frequent than $V\alpha 2$ -expressing cells in dual α -chain minilocus mice. (A) $V\alpha 2$, $V\alpha 3.2$ and $V\beta 5$ expression in lymph node T cells from B6 mice (WT), $Tcra^{-/-}$ mice transgenic for $V\alpha 2$ or $V\alpha 3.2$ miniloci, $Tcra^{-/-}$ mice transgenic for both $V\alpha 2$ and $V\alpha 3.2$ miniloci, and $Tcra^{-/-}$ mice transgenic for $V\alpha 2$ and $V\alpha 3.2$ miniloci plus the rearranged $V\beta 5$ gene. FACS plots representative of >10 mice per genotype. (B) Ratio of $V\alpha 3$: $V\alpha 2$ -bearing T cells in CD4 and CD8 peripheral T cell subsets in the mice strains described in (A). Data represent >10 mice per genotype.

doi:10.1371/journal.pone.0114320.g001

than the $V\alpha 2$. This indicates that the potential $V\alpha 3$ - $J\alpha 26$ and $V\alpha 3$ - $J\alpha 2$ rearrangements were able to produce very positively selectable TCRs in combination with the OT-I β -chain, just as they were with a complete β -chain repertoire. It also shows the strength of the preferential selection of $V\alpha 3.2$ into MHC class I-restricted T cells [25, 27].

Expression of the α -chain miniloci in thymocytes

We analyzed expression of the two α -chain minilocus transgenes in $Tcra^{-/-}$ thymocytes, finding that, as with the peripheral T cells, the vast majority of thymocytes expressed $V\alpha 3.2$ rather than $V\alpha 2$, whether or not $V\beta 5$ was also expressed (Fig. 4A). This was true of the TCR^{int} (before or during positive selection) cells, as well as the TCR^{hi} post-positive selection cells. There was no evidence for increased numbers of dual TCR α -chain-expressing cells compared to

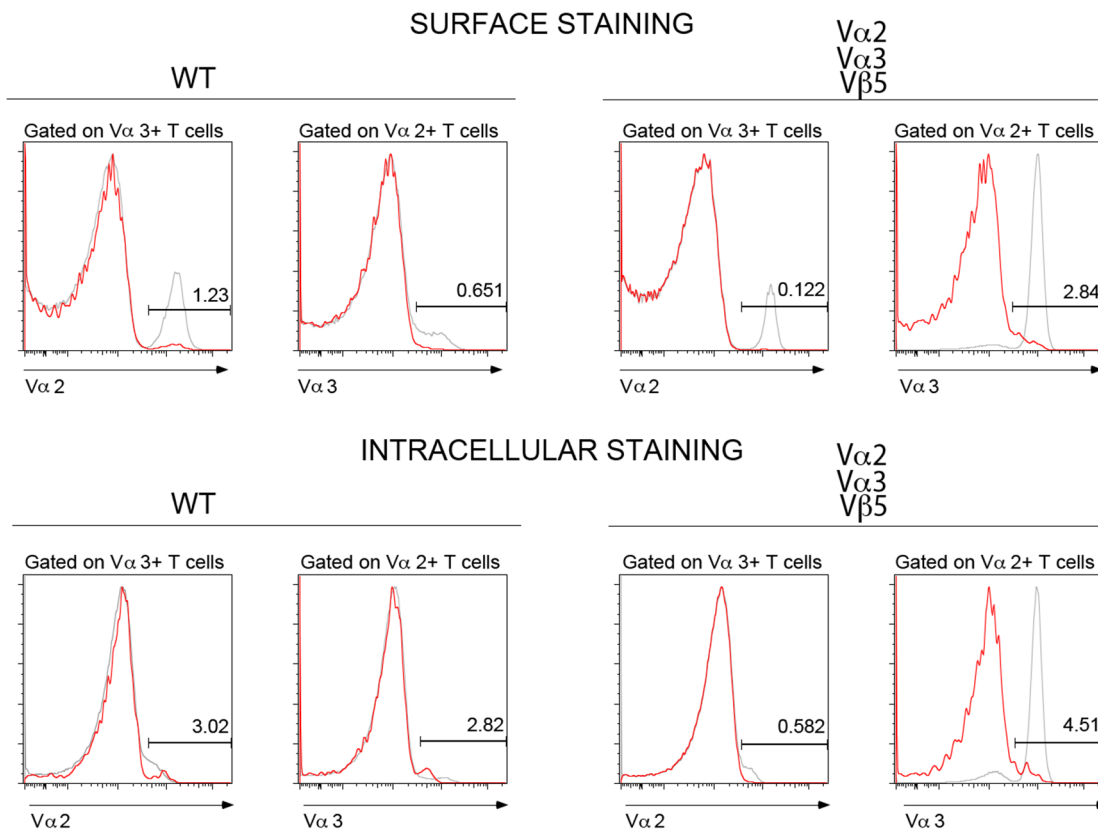


Fig. 2. Detection of dual $V\alpha$ expressing cells in subsets gated based on $V\alpha$ 2-positive or $V\alpha$ 3.2-positive populations. Cells positive for subunits indicated above each plot were analyzed for the expression of the other subunit. Gates were set based on total lymphocyte population (gray lines). Top panel represents detection of dual $V\alpha$ expressing cells by surface staining, bottom panel by intracellular staining. Results are representative of six mice per genotype.

doi:10.1371/journal.pone.0114320.g002

WT thymi in any of these developmental subsets. Because we had previously noted that some cells express two α -chains intracellularly, with only one being expressed on the cell surface [10], we also tested for expression of the two transgenes in permeabilized cells. Intracellular expression of either $V\alpha$ 3.2 or $V\alpha$ 2 from the miniloci was found, but there were essentially no cells expressing both $V\alpha$ 3.2 and $V\alpha$ 2 (Fig 4B). Separate analysis of the DN subset and CD4 and CD8 SP subsets did not reveal significantly enriched dual $V\alpha$ -expressing cells (Fig. 5). Rare dual $V\alpha$ positive cells were indeed observed in all specimens, however regardless of the phenotype this population represented no more than several hundred cells per mouse.

Because α -chain rearrangement and expression from one chromosome does not inhibit rearrangements on the other chromosome [1–3], we were initially surprised that there was not a population of cells expressing both miniloci. However, it was previously found that that only a relatively small proportion (~0.5% of normal) of the thymocytes in the $V\alpha$ 2 minilocus mice rearrange and express the locus [32]. This suggested that the lack of cells expressing both $V\alpha$ 3.2

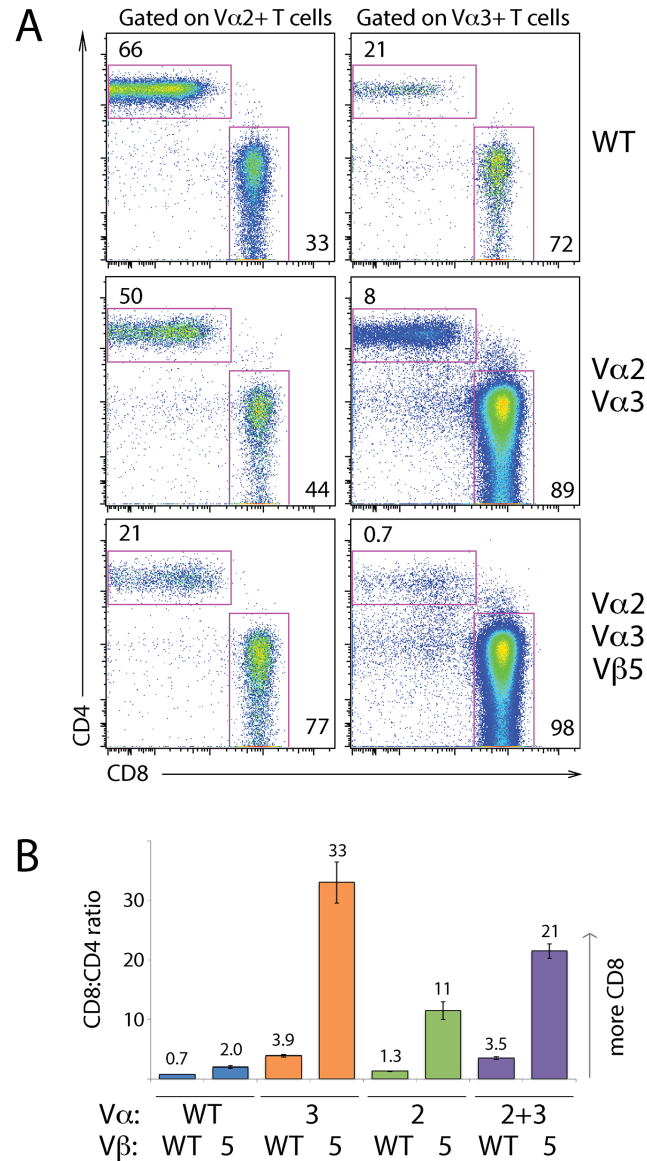


Fig. 3. $V\beta 5$ transgene skews expression of $V\alpha 2$ from CD4 to CD8 subset, but $V\alpha 3.2$ skews to CD8s with or without $V\beta 5$ transgene. (A) LN cells from B6 mice (WT), $Tcr\alpha^{-/-}$ mice transgenic for $V\alpha 2$ and $V\alpha 3.2$ miniloci, with or without transgenic rearranged $V\beta 5$, were gated for $V\alpha 2$ or $V\alpha 3.2$ expression to show the assortment of cells to CD4 or CD8 subpopulations. FACS plots representative of >10 mice per genotype. (B) shows the CD8:CD4 ratio of peripheral T cells from mouse strains expressing all the potential combinations of transgenes used here: $V\alpha 2$ and $V\alpha 3.2$ miniloci individually or together, and rearranged $V\beta 5$ transgene. Data represent 8–17 mice per genotype.

doi:10.1371/journal.pone.0114320.g003

and $V\alpha 2$ was due to the low numbers that actually rearrange either of the miniloci. As noted earlier, both of the miniloci produce highly selectable α -chains, so that the lack of dual $V\alpha$ -expressing thymocytes could be due to positive selection occurring before there is a chance for rearrangement of the other minilocus.

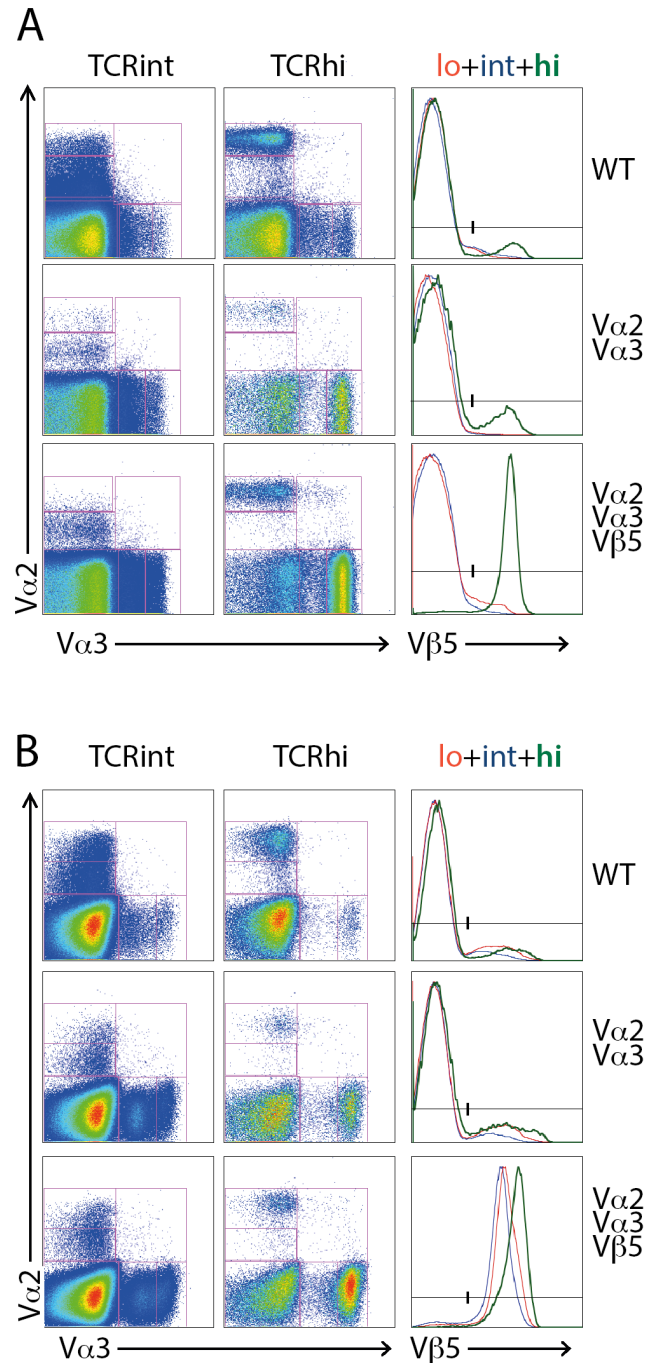


Fig. 4. Triple-transgenic thymocytes exhibit efficient allelic exclusion of TCR $V\alpha$ chains. (A) Double-positive thymocytes from B6 (top), $V\alpha 2$ $V\alpha 3.2$ (middle) and $V\alpha 2$ $V\alpha 3.2$ $V\beta 5$ (bottom) mice were analyzed for surface expression of $V\alpha 2$, $V\alpha 3.2$ and $V\beta 5$ in TCR^{int} and TCR^{hi} gate. (B) Double-positive thymocytes from B6 (top), $V\alpha 2$ $V\alpha 3.2$ (middle) and $V\alpha 2$ $V\alpha 3.2$ $V\beta 5$ (bottom) mice were analyzed for intracellular expression of $V\alpha 2$, $V\alpha 3.2$ and $V\beta 5$ in TCR^{int} and TCR^{hi} gate. FACS plots representative of >10 mice per genotype.

doi:10.1371/journal.pone.0114320.g004

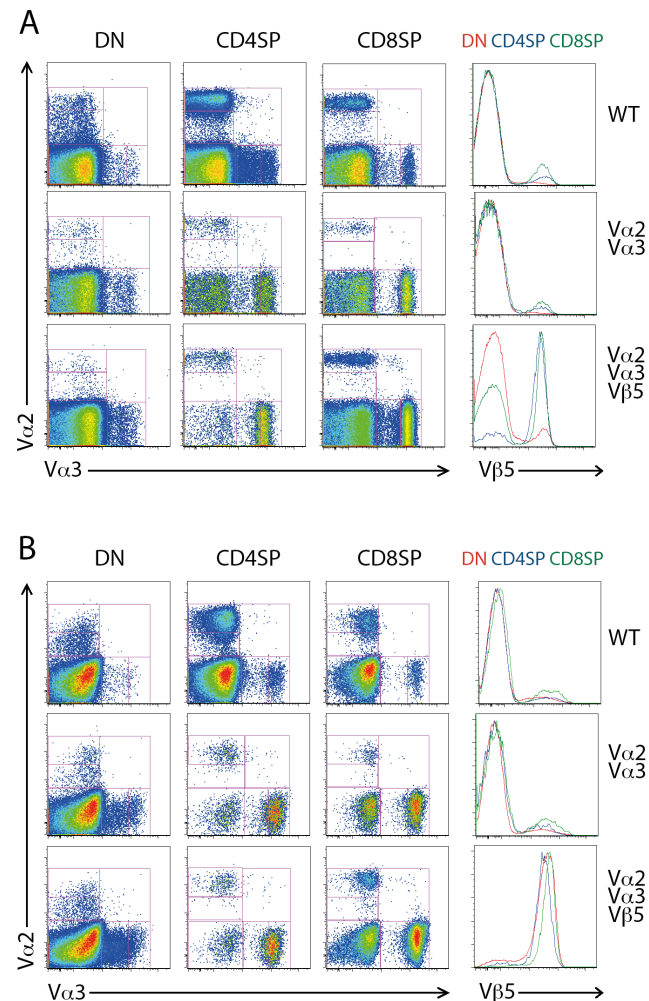


Fig. 5. Triple-transgenic thymocytes exhibit efficient allelic exclusion of TCR $V\alpha$ chains. (A) Double-negative (DN) and CD4 and CD8 single positive (SP) thymocytes from B6 (top), $V\alpha 2 V\alpha 3.2$ (middle) and $V\alpha 2 V\alpha 3.2 V\beta 5$ (bottom) mice were analyzed for surface expression of $V\alpha 2$, $V\alpha 3.2$ and $V\beta 5$ in TCR^{int} and TCR^{hi} gate. (B) DN and CD4 and CD8 SP thymocytes from B6 (top), $V\alpha 2 V\alpha 3.2$ (middle) and $V\alpha 2 V\alpha 3.2 V\beta 5$ (bottom) mice were analyzed for intracellular expression of $V\alpha 2$, $V\alpha 3.2$ and $V\beta 5$ in TCR^{int} and TCR^{hi} gate. FACS plots representative of >10 mice per genotype and are derived from the same dataset as Fig. 4.

doi:10.1371/journal.pone.0114320.g005

$V\alpha$ expression in thymocytes in the absence of a selecting signal

We reasoned that lack of dual $V\alpha$ -expressing cells might be due to efficient positive selection of both the single- $V\alpha 3.2$ or single- $V\alpha 2$ -expressing cells, before they had a chance for a second rearrangement. We therefore tested whether the dual minilocus thymocytes could be induced to co-express both $V\alpha 2$ and $V\alpha 3.2$ if they were allowed to develop in a non-selecting background. Chimeric mice were made by reconstituting lethally irradiated CD45.1 mice or $MHC^{o/o}$ host mice with bone marrow stem cells from either normal B6 mice or mice with transgenic $V\alpha 2$ minilocus, $V\alpha 3.2$ minilocus, and $V\beta 5$ β -chain, on the $Tcra^{-/-}$ background. Eight weeks after reconstitution, the mice were sacrificed and thymocytes analyzed

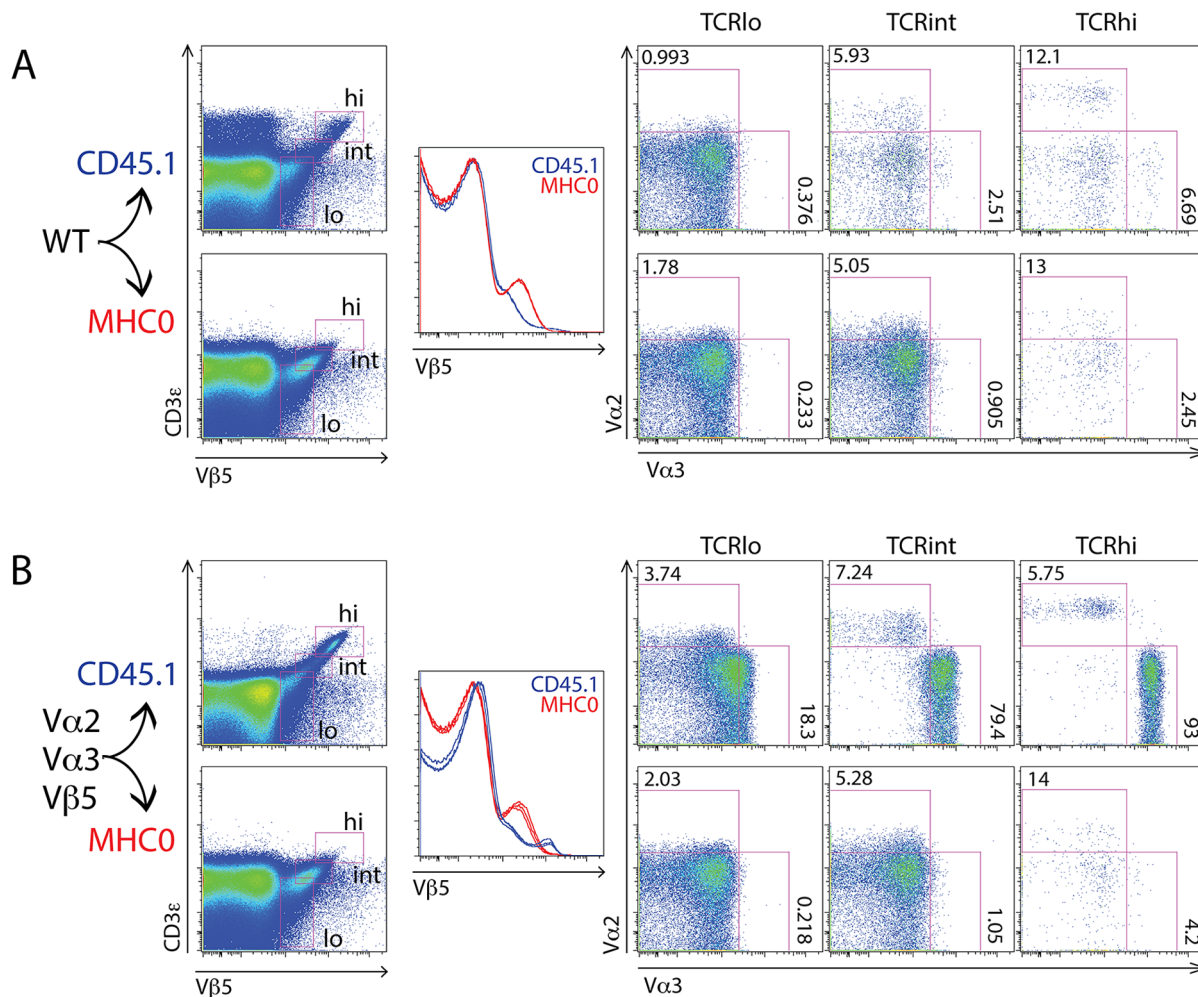


Fig. 6. Development of triple-transgenic cells in hosts lacking MHC class I and II yields TCR^{int}, single α -chain thymocytes. (A) Bone marrow from B6 mice was used to reconstitute irradiated CD45.1 (top) or MHC^{o/o} (bottom) hosts. After eight weeks, thymocytes were harvested and analyzed for expression of either α -chain in TCR^{lo}, TCR^{int}, and TCR^{hi}, Vβ5-positive gates. (B) Bone marrow from triple-transgenic mice was used to reconstitute irradiated CD45.1 (top) or MHC^{o/o} (bottom) hosts. After eight weeks, thymocytes were harvested and analyzed for expression of either α -chain in TCR^{lo}, TCR^{int}, and TCR^{hi}, Vβ5-positive gates. FACS plots representative of 7-9 mice per group in three independent experiments.

doi:10.1371/journal.pone.0114320.g006

(Fig. 6). In the MHC-sufficient CD45.1 hosts, the transgenic thymocytes developed as in the donor mice, with the vast majority of mature thymocytes expressing V α 3.2 and about 6% expressing V α 2. In the MHC^{o/o} host thymi, very few cells progressed past the TCR^{int} stage, and in most chimeras there were no detectable dual V α 2 and V α 3.2-expressing cells in the TCR^{int} cells (Fig. 6B, lower panel).

In another experiment to test the effect of eliminating positive selection, we used the OP9-DL1 co-culture system [30, 31] to analyze thymocyte development. In this system, thymocytes develop from DN to DP TCR^{int} cells, but few undergo positive selection to produce TCR^{hi} cells. Here, the triple-transgenic (V α 3.2 and V α 2 miniloci, rearranged OT-I Vβ5, *Tcr α* ^{-/-}) cells developed from DN to DP,

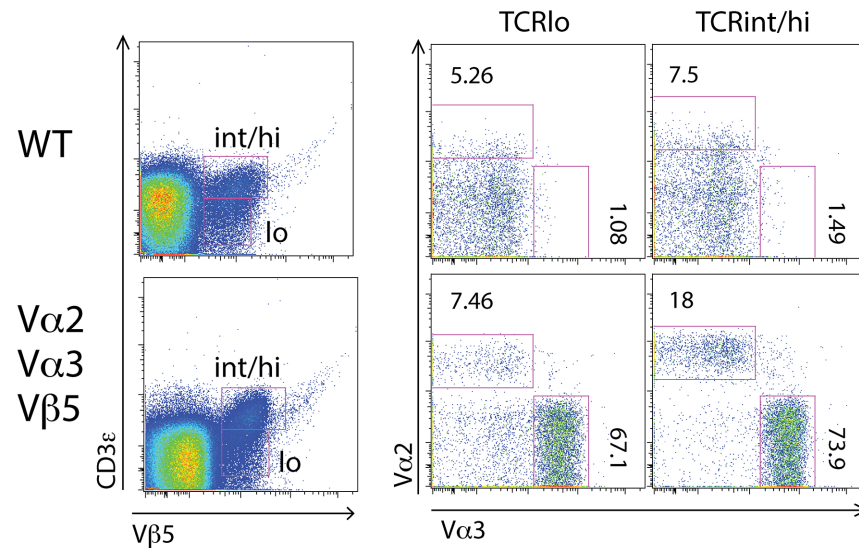


Fig. 7. Development of DN thymocytes from triple-transgenic mice in OP9-DL1 *in vitro* system yields $TCR^{int/hi}$, single α -chain thymocytes. (A) DN thymocytes from B6 mice were enriched as described in Materials and Methods and co-cultured with OP9-DL1 cells in the presence of IL-7 for five days. Cells were harvested and analyzed for expression of either α -chain in TCR^{lo} , and $TCR^{int/hi}$, $V\beta 5$ -positive gates. (B) DN thymocytes from triple-transgenic mice were enriched and co-cultured with OP9-DL1 cells as above. Cells were harvested and analyzed for expression of either α -chain in TCR^{lo} , and $TCR^{int/hi}$, $V\beta 5$ -positive gates. FACS plots representative of 4 mice per genotype in triplicate wells and two independent experiments.

doi:10.1371/journal.pone.0114320.g007

expressing TCR^{lo} or TCR^{int} (TCR^{hi} cells were not distinguishable, and were counted with TCR^{int}). Again, negligible numbers of dual $V\alpha$ -expressing cells were found (Fig. 7).

Conclusions

Our initial goal was to produce a mouse expressing two defined $V\alpha$'s that would allow us to study the induction of phenotypic allelic exclusion in detail, and particularly biochemically. This goal was not realized, likely because of the low frequency of cells in these transgenic mice that actually rearranged the α -chain miniloci. Moreover, once expressed, both the $V\alpha 3.2$ and $V\alpha 2$ containing α -chains were efficiently positively selected. This was the case with endogenously rearranged TCR β -chains as well as when the β -chain repertoire was limited to the OT-I ($V\beta 5$) β -chain. This likely contributed to the failure to find a distinct population of cells that expressed dual TCRs, even intracellularly. $V\alpha 3.2$ transgene-expressing cells were much more frequent than the $V\alpha 2$ transgene-expressing cells, especially in the presence of the OT-I β -chain. This was surprising given that the OT-I TCR uses the identical $V\alpha 2$ element to the minilocus and that the OT-I CDR3 α can be recreated by rearrangement of the minilocus [32], although other work also suggests that the combination of $V\alpha 2$ with $V\beta 5$ is not particularly strongly selected when other $V\alpha$ - $V\beta$ combinations are possible [35].

The predominant selection of V α 3.2-bearing cells to the CD8⁺ population [25–27] was recapitulated in the minilocus mice, and the dominant expression of V α 3.2 compared to V α 2 resulted in the majority of peripheral T cells being CD8⁺ cells. The V α 3.2 minilocus mouse strain will potentially be useful for studies of repertoires using the V α 3.2 element, similar to the utility of the previously-described V α 2 minilocus strain.

Acknowledgments

We are grateful to Drs C. Benoist and D. Mathis (Harvard Medical School) and M. Correia-Neves (Life and Health Sciences Research Institute (ICVS), Braga, Portugal) for the V α 2 minilocus DNA construct and mouse strain, and to Dr Pamela Fink, (University of Washington) for the V β 5 TCR transgenic line.

Author Contributions

Conceived and designed the experiments: VR NRJG. Performed the experiments: VR LW GF H-OK JA. Analyzed the data: VR KS NRJG. Wrote the paper: VR NRJG.

References

1. Gascoigne NRJ, Alam SM (1999) Allelic exclusion of the TCR α -chain: developmental regulation of a post-translational event. *Semin Immunol* 11: 337–347.
2. Brady BL, Steinel NC, Bassing CH (2010) Antigen receptor allelic exclusion: an update and reappraisal. *J Immunol* 185: 3801–3808.
3. Malissen M, Trucy J, Jouvin-Marche E, Cazenave P-A, Scollay R, et al. (1992) Regulation of TCR α and β gene allelic exclusion during T-cell development. *Immunol Today* 13: 315–322.
4. Borgulya P, Kishi H, Uematsu Y, von Boehmer H (1992) Exclusion and inclusion of α and β T cell receptor alleles. *Cell* 69: 529–538.
5. Brandle D, Muller C, Rulicke T, Hengartner H, Pircher H (1992) Engagement of the T cell receptor during positive selection in the thymus down-regulates RAG-1 expression. *Proc Natl Acad Sci USA* 89: 9529–9533.
6. Kouskoff V, Vonesch J-L, Benoist C, Mathis D (1995) The influence of positive selection on RAG expression in thymocytes. *Eur J Immunol* 25: 54–58.
7. Malissen M, Trucy J, Letourneur F, Rebai N, Dunn DE, et al. (1988) A T cell clone expresses two T cell receptor α genes but uses one $\alpha\beta$ heterodimer for allorecognition and self MHC-restricted antigen recognition. *Cell* 55: 49–59.
8. Alam SM, Crispe IN, Gascoigne NRJ (1995) Allelic exclusion of mouse T cell receptor α chains occurs at the time of thymocyte TCR up-regulation. *Immunity* 3: 449–458.
9. Boyd R, Kozieradzki I, Chidgey A, Mittrucker H-W, Bouchard D, et al. (1998) Receptor-specific allelic exclusion of TCR V α -chains during development. *J Immunol* 161: 1718–1727.
10. Alam SM, Gascoigne NRJ (1998) Post-translational regulation of TCR V α allelic exclusion during T cell differentiation. *J Immunol* 160: 3883–3890.
11. Corthay A, Nandakumar KS, Holmdahl R (2001) Evaluation of the percentage of peripheral T cells with two different T cell receptor alpha-chains and of their potential role in autoimmunity. *J Autoimmun.* pp. 423–429.
12. Elliott JI, Altmann DM (1995) Dual T cell receptor α chain T cells in autoimmunity. *J Exp Med* 182: 953–959.

13. **Heath WR, Carbone FR, Bertolino P, Kelly J, Cose S, et al.** (1995) Expression of two T cell receptor α chains on the surface of normal murine T cells. *Eur J Immunol* 25: 1617–1623.
14. **Padovan E, Casorati G, Dellabona P, Meyer S, Brockhaus M, et al.** (1993) Expression of two T cell receptor α chains: Dual receptor T cells. *Science* 262: 422–424.
15. **Sarukhan A, Garcia C, Lanoue A, von Boehmer H** (1998) Allelic inclusion of T cell receptor α genes poses an autoimmune hazard due to low-level expression of autospecific receptors. *Immunity* 8: 563–570.
16. **McGargill MA, Derbinski JM, Hogquist KA** (2000) Receptor editing in developing T cells. *Nat Immunol* 1: 336–341.
17. **Morris GP, Allen PM** (2009) Cutting edge: Highly alloreactive dual TCR T cells play a dominant role in graft-versus-host disease. *J Immunol* 182: 6639–6643.
18. **Elliott JI, Altmann DM** (1996) Non-obese diabetic mice hemizygous at the T cell receptor α locus are susceptible to diabetes and sialitis. *Eur J Immunol* 26: 953–956.
19. **He X, Janeway CA Jr, Levine M, Robinson E, Preston-Hurlburt P, et al.** (2002) Dual receptor T cells extend the immune repertoire for foreign antigens. *Nat Immunol* 3: 127–134.
20. **Couez D, Malissen M, Buferne M, Schmitt-Verhulst A-M, Malissen B** (1991) Each of the two productive T cell receptor α -gene rearrangements found in both the A10 and BM 3.3 T cell clones give rise to an α chain which can contribute to the constitution of a surface-expressed $\alpha\beta$ dimer. *Int Immunol* 3: 719–729.
21. **Dave VP, Allman D, Wiest DL, Kappes DJ** (1999) Limiting TCR expression leads to quantitative but not qualitative changes in thymic selection. *J Immunol* 162: 5764–5774.
22. **Lacorazza HD, Nikolich-Zugich J** (2004) Exclusion and inclusion of TCR α proteins during T cell development in TCR-transgenic and normal mice. *J Immunol* 173: 5591–5600.
23. **Sant'Angelo DB, Cresswell P, Janeway CAJ, Denzin LK** (2001) Maintenance of TCR clonality in T cells expressing genes for two TCR heterodimers. *Proc Natl Acad Sci USA* 98: 6824–6829.
24. **Niederberger N, Holmberg K, Alam SM, Sakati W, Naramura M, et al.** (2003) Allelic exclusion of the TCR α -chain is an active process requiring TCR-mediated signaling and c-Cbl. *J Immunol* 170: 4557–4563.
25. **Sim B-C, Zerva L, Greene MI, Gascoigne NRJ** (1996) Control of MHC restriction by TCR $V\alpha$ CDR1 and CDR2. *Science* 273: 963–966.
26. **Sim B-C, Lo D, Gascoigne NRJ** (1998) Preferential expression of TCR $V\alpha$ regions in CD4/CD8 subsets: class discrimination or co-receptor recognition? *Immunol Today* 19: 276–282.
27. **Sim B-C, Wung JL, Gascoigne NRJ** (1998) Polymorphism within a TCRAV family influences the repertoire through class I/II restriction. *J Immunol* 160: 1204–1211.
28. **Pircher H, Rebai N, Groettrup M, Gregoire C, Speiser DE, et al.** (1992) Preferential positive selection of V α 2+ CD8+ T cells in mouse strains expressing both H-2k and T cell receptor V α a haplotypes: determination with a V α 2-specific monoclonal antibody. *Eur J Immunol* 22: 399–404.
29. **Utsunomiya Y, Bill J, Palmer E, Gollob K, Takagaki Y, et al.** (1989) Analysis of a monoclonal rat antibody directed to the α -chain variable region ($V\alpha 3$) of the mouse T cell antigen receptor. *J Immunol* 143: 2602–2608.
30. **Schmitt TM, Zuniga-Pflucker JC** (2002) Induction of T cell development from hematopoietic progenitor cells by delta-like-1 in vitro. *Immunity* 17: 749–756.
31. **de Pooter R, Zuniga-Pflucker JC** (2007) T-cell potential and development in vitro: the OP9-DL1 approach. *Curr Opin Immunol* 19: 163–168.
32. **Correia-Neves M, Waltzinger C, Mathis D, Benoist C** (2001) The shaping of the T cell repertoire. *Immunity* 14: 21–32.
33. **Hogquist KA, Jameson SC, Heath WR, Howard JL, Bevan MJ, et al.** (1994) T cell receptor antagonist peptides induce positive selection. *Cell* 76: 17–27.
34. **Kouskoff V, Signorelli K, Benoist C, Mathis D** (1995) Cassette vectors directing expression of T cell receptor genes in transgenic mice. *J Immunol Methods* 180: 273–280.

35. **Simmons KB, Wubeshet M, Ames KT, McMahan CJ, Hale JS, et al.** (2012) Modulation of TCRbeta surface expression during TCR revision. *Cell Immunol* 272: 124–129.
36. **Sim B-C, Aftahi N, Reilly C, Bogen B, Schwartz RH, et al.** (1998) Thymic skewing of the CD4/CD8 ratio maps with the T-cell receptor α -chain locus. *Curr Biol* 8: 701–704.